

1 **Transmission of COVID-19 in 282 clusters in Catalonia, Spain: a cohort study**

2

3 Michael Marks PhD, ^{1,2} Pere Millat, ³ Dan Ouchi, ⁴ Chrissy Roberts, ¹ Andrea Alemany BM, ⁴ Marc
4 Corbacho-Monné BM, ⁴ Maria Ubals, ⁴ Martí Vall-Mayans PhD, ^{4,5} Camila G-Beiras PhD, ⁴ Nuria Prat, ⁵ Jordi
5 Ara, ⁵ Bonaventura Clotet, ^{4,5,6} Oriol Mitjà PhD ^{4,5,6,7}

6

7 1. London School of Hygiene and Tropical Medicine, London, United Kingdom

8 2. Hospital for Tropical Diseases, London, United Kingdom

9 3. Barcelona Institute for Global Health – University of Barcelona, Barcelona, Spain

10 4. Fight AIDS and Infectious Diseases Foundation, Badalona, Spain

11 5. Hospital Universitari Germans Trias i Pujol, Badalona Spain

12 6. Universitat de Vic – Universtiat Central de Catalunya, Vic, Spain

13 7. Lihir Medical Centre-InternationalSOS, Lihir Island, Papua New Guinea

14

15

16 Corresponding author: Michael Marks

17 Clinical Research Department,

18 London School of Hygiene & Tropical Medicine

19 London

20 United Kingdom

21 WC1E 7HT

22

23

24 **ABSTRACT**

25 *Background*

26 There remains limited data on what variables affect the risk of transmission of SARS-CoV-2 and developing
27 symptomatic Covid-19 and in particular the relationship to viral load (VL).

28 *Methods*

29 We analysed data collected in a trial of hydroxychloroquine post-exposure prophylaxis. Covid-19 cases and
30 their contacts were identified through the local epidemiological surveillance system. VL, estimated by
31 quantitative PCR, was assessed at enrollment, at day 14, and whenever the participant reported Covid-19-
32 like symptoms. Risk of transmission, risk of developing symptomatic disease and incubation dynamics
33 were evaluated using random-effects regression analysis.

34 *Findings*

35 We identified 314 cases, 282 of which had at least one contact (753 contacts in total). Ninety (33%) of 282
36 clusters had at least one transmission event. The secondary attack rate was 16% (125/753), with a variation
37 from 12% to 24% for VL of the index case of $<10^6$, and $>10^9$ copies/mL, respectively (OR per \log_{10} increase
38 in VL 1.3 95%CI 1.1–1.6). Increased risk of transmission was also associated with household contact (OR
39 2.7; 1.4–5.06) and age of the contact (OR 1.02; 1.01–1.04). The proportion of PCR positive contacts who
40 developed symptomatic Covid-19 was 40.3% (181/449), with a variation from 25% to 60% for VL of the
41 contact $<10^7$, and $>10^9$ copies/mL (HR \log_{10} increase in VL 1.12; 95% CI 1.05 – 1.2). Time to onset of
42 symptomatic disease decreased from a median of 7 days (IQR 5–10) for individuals with an initial viral
43 load $<10^7$ to 6 days (4–8) and 5 days (3–8) for individuals with an initial viral load of 10^7 – 10^9 and $>10^9$,
44 respectively.

45 *Interpretation*

46 We show that the viral load of the index case is a leading driver of SARS-CoV-2 transmission. The risk of
47 symptomatic Covid-19 is strongly associated with viral load of the contact at baseline, which shortens the
48 incubation time in a dose-dependent manner.

49

50 Funding: Crowdfunding campaign YoMeCorono (<https://www.yomecorono.com/>), and Generalitat de
51 Catalunya.

52

53 **Research in context**

54 *Evidence before this study*

55 In September 2020, we searched PubMed database for articles reporting on factors influencing transmission
56 and the risk of developing symptomatic disease. Search terms included “Covid-19”, “transmission”,
57 “incubation time”, and “risk”, with no language restrictions. By the time of performing this search, various
58 authors had reported on retrospective analyses of clusters of index cases and their corresponding contacts,
59 as well as series of patients who developed symptomatic Covid-19 disease after PCR positive result.
60 Besides describing the secondary attack rate, various authors identified risk factors for transmission
61 associated with the place and duration of exposure and the lack of use of personal protective equipment.
62 However, we found no clear evidence regarding the influence of the characteristics of the index case on
63 transmission risk. Similarly, although various retrospective series of patients with positive PCR results had
64 reported incubation times elsewhere, the characteristics of index case and contacts that may influence the
65 risk of developing symptomatic Covid-19 and the time to this event had been barely addressed.

66 *Added value of this study*

67 We analyzed data from a large cluster-randomized clinical trial on post-exposure therapy for Covid-19 that
68 provide new information on SARS-CoV-2 transmission dynamics. Several design components add value
69 to this dataset. Notably, quantitative PCR was available for the index cases to estimate risk of transmission.
70 Furthermore, quantitative PCR was also performed on asymptomatic contacts at the time of enrollment
71 allowing to investigate the dynamics of symptomatic disease onset among them. We found that the viral
72 load of the index case was the leading determinant of the risk of SARS-CoV-2 PCR positivity among
73 contacts. Among contacts who were SARS-CoV-2 PCR positive at baseline, viral load significantly
74 influenced the risk of developing the symptomatic disease in a dose-dependent manner. This influence also
75 became apparent in the incubation time, which shortened with increasing baseline viral loads.

76 *Implication of all the available evidence*

77 Our results provide important insights into the knowledge regarding the risk of SARS-CoV-2 transmission
78 and Covid-19 development. The fact that the transmission risk is primarily driven by the viral load of index
79 cases, more than other factors such as their symptoms or age, suggests that all cases should be considered
80 potential transmitters irrespective of their presentation and encourages assessing viral load in cases with a
81 larger number of close contacts. Similarly, our results regarding the risk and expected time to developing
82 symptomatic Covid-19 encourage risk stratification of newly diagnosed SARS-CoV-2 infections based on
83 the initial viral load.

84

85

86 **INTRODUCTION**

87 According to current evidence, Covid-19 is primarily transmitted from person to person through respiratory
88 droplets, as well as indirect contact, through transfer of the virus from contaminated fomites to the mouth,
89 nose, or eyes.^{1,2} Several outbreak investigation reports have shown that Covid-19 transmission can be
90 particularly effective in confined indoor spaces such as workplaces including factories, churches,
91 restaurants, shopping centers, or healthcare settings.³⁻⁶ In Spain, and many other countries, healthcare
92 workers have experienced a high rate of Covid-19 infection.⁷

93 The availability of data regarding the factors that may enhance transmission is essential for designing
94 interventions to control SARS-CoV-2 spread. Currently available data provide information on the risk of
95 transmission related to the place and duration of exposure, and the use of respiratory and eye protection<sup>1,3-
96 5,8</sup> but not on other factors related to the characteristics of index cases and their contacts. Over the course
97 of infection, the virus has been identified in respiratory tract specimens 1–2 days before the onset of
98 symptoms, and it can persist for up to 13 days after the onset of symptoms in mild cases.⁹ However, the
99 detection of viral RNA by PCR does not necessarily equate with infectivity, and the exact relationship
100 between viral load and risk of transmission from a case is still not clear.^{10,11}

101 Another challenge for public health interventions is the risk stratification of infected individuals for
102 developing symptomatic illness. Studies investigating case-contact pairs have reported highly variable
103 secondary attack rates (i.e., range 0.7% to 75%), depending on the type of exposure—duration, place, pre-
104 or post-symptomatic.¹²⁻¹⁵ On the other hand, the proportion of PCR-positive infected contacts that progress
105 to symptomatic disease has been typically around 40% – 60%.¹⁶ Estimates of mean or median incubation
106 period have been consistently between 5–7 days.¹⁷⁻¹⁹ Nonetheless, little is known about factors that may
107 contribute to variation on the risk of developing Covid-19 symptoms or the incubation periods among
108 infected individuals.

109 The objective of this study was to evaluate transmission dynamics of SARS-CoV-2 in the context of a trial
110 of post-exposure prophylaxis and evaluate the influence of baseline variables—including viral load of the
111 index cases and exposed contacts—to transmission, development of symptomatic disease, and the
112 incubation period.

113

114

115 **METHODS**

116 *Study design and participants*

117 This was a post-hoc analysis of data collected in the BCN PEP CoV-2 Study (NCT04304053), a cluster-
118 randomized trial that included PCR-confirmed Covid-19 cases and their close contacts occurred between
119 Mar 17 to Apr 28, 2020, during the SARS-CoV-2 outbreak, in three out of nine healthcare areas in Catalonia
120 (North-East Spain): *Catalunya central, Àmbit Metropolità Nord, and Barcelona Ciutat*, total target
121 population 4,206,440 people. The study protocol of the BCN PEP CoV-2 Study was approved by the ethics
122 committee of Hospital Germans Trias Pujol, (Badalona, Spain). Written informed consent was obtained
123 from all participants. Full details of the original study are reported elsewhere.²⁰

124 Covid-19 cases were identified using the electronic registry of the Epidemiological Surveillance Emergency
125 Service of Catalonia (SUVEC) of the Department of Health.²¹ Following government ordinance, the
126 SUVEC registered all new Covid-19 diagnoses occurred from March 16, 2020. The surveillance system
127 included active tracing of all contacts with recent history of exposure, defined as being in contact with a
128 SARS-CoV-2 PCR positive case during more than 15 minutes within two meters.

129 All Covid-19 cases included in the present analysis were non-hospitalized adults (i.e., ≥ 18 years of age)
130 with quantitative PCR result available at baseline, mild symptom onset within five days before enrollment,
131 and no evidence of SARS-CoV-2 infections in their accommodation (i.e., household or nursing home) or
132 workplace within the 14 days before enrollment. Contacts selected for the analysis were adults with a recent
133 history of exposure and absence of Covid-19-like symptoms within the seven days preceding enrolment.
134 Contacts were exposed to the index case as either a healthcare worker, a household contact, a nursing home
135 worker, or a nursing home resident.

136 *Study procedures and data collection*

137 A dedicated outbreak field team visited cases and contacts at home or nursing home on days 1 (enrollment)
138 and 14. At the first clinical assessment on day 1 they conducted a baseline assessment, including a
139 questionnaire for symptoms of Covid-19 and collected relevant epidemiological information using a
140 structured interview: time of first exposure to the index case, place of contact (hospital, home, nursing care
141 facility), routine use of a mask of both, the case and the contact, and sleep location concerning the index
142 case (e.g., same room, same house). Symptoms surveillance consisted of active monitoring by phone on
143 days 3, and 7, a home visit on day 14, and passive monitoring whenever the participants developed
144 symptoms. Participants who developed symptoms were visited the same day they notified symptom onset

145 (unscheduled visits) by the field team, which recorded the date of symptom onset, type of symptoms from
146 a pre-specified checklist, and symptom severity, graded on a 1-to-4 scale.

147 Serial SARS-CoV-2 PCR test and viral load titration on nasopharyngeal swab were conducted on day 1 and
148 day 14 to all participants, and on any unscheduled visit when the participant notified the onset of Covid-19
149 symptoms. The detection of the SARS-CoV-2 virus was performed from nasopharyngeal swabs at
150 SYNLAB Diagnostics (Barcelona, Spain) by PCR using TaqMan™ 2019-nCoV Assay Kit according to the
151 manufacturer's protocol (Catalog number: A47532, Thermo Fischer Scientific Inc.). Viral load was
152 quantified from nasopharyngeal swabs at IrsiCaixa laboratory (Badalona, Spain) by PCR amplification,
153 based on the 2019-Novel Coronavirus Real-Time RT-PCR Diagnostic Panel guidelines and protocol
154 developed by the American Center for Disease Control and Prevention (CDC).²² For absolute
155 quantification, a standard curve was built using 1/5 serial dilutions of a SARS-CoV2 plasmid (2019-
156 nCoV_N_Positive Control, catalog no. 10006625, 2x10⁵ copies/μL, Integrated DNA Technologies) and run
157 in parallel to all PCR determinations.

158 *Outcomes and definitions*

159 Transmission was characterized by examining the number of infected and uninfected individuals among
160 close contacts to an index case. We defined transmission events as PCR-positivity at any time point (i.e.,
161 days 1, 14, or at any other unscheduled PCR testing when participants referred symptoms) of a contact in
162 the same household or workplace within the 14 days following enrollment. Following the WHO guidelines,
163 we defined the secondary attack rate as the ratio of PCR-positive individuals among close contacts.

164 The exposure time was defined as the time from the earliest possible contact with the symptomatic index
165 case, based on individual contact investigation. The incubation period was defined as time from first
166 exposure to symptom onset, with later confirmation of infection by PCR.²³

167 *Statistical Analysis*

168 The relationship between clinical and demographic characteristics of cases and their viral load was assessed
169 using linear regression and included all Covid-19 cases, regardless of the presence or not of close contacts.
170 The analysis regarding the determinants of transmission was performed using clusters of an index case (i.e.,
171 a Covid-19 case with at least one close contact) and their corresponding contacts. To identify risk factors
172 for transmission, we fitted a random-effects logistic regression model for the risk of transmission within a
173 cluster. Factors with potential influence on the risk of transmission included characteristics of the potential
174 transmitter (i.e., age, sex, viral load, and the presence or absence of respiratory symptoms) and contacts
175 (i.e., age, sex, and the type of contact they had with the index case). Finally, the analysis regarding the risk

176 of developing symptomatic Covid-19 included all contacts with positive PCR result at baseline, irrespective
177 of the characteristics and available data of the index case. We assessed the time from exposure to
178 development of symptomatic disease and fitted a cox-regression model to explore the factors that may
179 influence it. Data at 14 days after the first study visit were censored, in line with the follow-up conducted
180 in the original trial. All analyses were conducted in R version 4.0.

181 *Role of the funding source*

182 The funder of the study had no role in the study design, data collection, data analysis, data interpretation,
183 or writing of the report. The corresponding author had full access to all the data in the study and had final
184 responsibility for the decision to submit for publication.

185

186 **RESULTS**

187 *Population characteristics*

188 During the investigation period, we identified 314 cases in whom the viral load was tested. Overall, 220
189 (70.0%) were female and the median age was 41 (IQR 31-52). Of them, 282 had at least one close contact,
190 resulting in the corresponding clusters, with a total of 753 contacts. Clusters had a median of 2 contacts
191 (IQR 1-3) and a maximum of 19 contacts. Most index cases of the clusters were female (n= 202, 71.6%),
192 with an average age of 42 years (SD 13 years) (Table 1).

193 *Index case viral load*

194 At the first study visit, the median viral load amongst Covid-19 cases was 10^8 (IQR 10^6 - 10^9). In
195 multivariable linear regression the viral load amongst cases was higher in individuals who reported cough,
196 fever, or rhinitis (Table 2). There was no association between the age or sex of the Covid-19 case nor the
197 presence of reported dyspnea or anosmia with viral load.

198 *Cluster-level transmission*

199 For our risk factor analysis on SARS-CoV-2 transmission we used linked case and contact data of 282
200 clusters with 753 contacts. At the cluster level, 90 (33.3%) of the 282 clusters had at least one transmission
201 event, with a highly skewed distribution of the number of transmission events per cluster (Figure 1A). A
202 total of 125 (16.6%) of 753 contacts had a PCR positive result over the study period. The proportion of
203 contacts who tested positive for SARS-CoV-2 within a cluster (secondary attack rate) progressively
204 increased with the viral load of the index case: from 12% where the index case had a viral load of $<10^6$
205 copies/mL to 24% where the index case had a viral load $>10^9$ copies/mL (Figure 1B). According to the
206 multivariate analysis, the viral load of the index case was strongly associated with the risk of onward

207 transmission (OR per \log_{10} increase in VL 1.3; 95% CI 1.1-1.6) (Table 3). Ninety percent (114/125) of
208 transmission events had an index case viral load of 5.1 \log_{10} copies/ml or more, and 50% (61/125) had a
209 viral load of 8.8 \log_{10} copies/ml or more. Other factors associated with an increased risk of transmission
210 were household contact (OR 2.7, 95% 1.4-5.06) and age of the contact (OR 1.02, 95% 1.01-1.04). There
211 was no association of risk of transmission with reported mask usage by contacts, with the age or gender of
212 the index case nor with the presence of respiratory symptoms in the index case at the initial study visit
213 (Table 3).

214 We did not find any evidence of an association between the viral load of the index cases and the first viral
215 load of incident positive results amongst contacts ($p = 0.1$, Supplementary Figure 1). Also, after excluding
216 contacts who were PCR positive at the first study visit, we found no association between the viral load of
217 the index case and the time to onset of incident SARS-CoV-2 infection (HR 1.01 95% CI 0.83-1.23).

218 *Risk factor for Covid-19 disease among PCR+ contacts*

219 Overall, 449 contacts had a positive PCR result at first visit regardless of availability on viral load data of
220 their index case (n=125) or not (n=324). Twenty-eight (6.3%) of 449 contacts had symptoms at the first
221 visit and 181 (40.3%) developed symptomatic Covid-19 within the follow-up period. The multivariable
222 cox-regression analysis, after adjusting for age and sex, revealed that increasing viral load levels of the
223 contact at day 1 were associated with an increased risk of developing symptomatic disease. The risk of
224 symptomatic disease was approximately 25% amongst individuals with an initial viral load of $<10^7$
225 copies/mL compared to a more than 60% amongst those with an initial viral load of $>10^9$ (HR per \log_{10}
226 increase in VL 1.12; 95% CI 1.05 – 1.2; $p = 0.0006$) (Figure 2A). There was no association between with
227 sex or age of individuals and the risk of developing symptomatic Covid-19.

228 The median time from exposure to symptom onset was 7 days (IQR 5 – 9). The time to onset of symptomatic
229 disease decreased from a median of 7 days (IQR 5 – 10) for individuals with an initial viral load $<10^7$
230 copies/mL to 6 days (IQR 4 – 8) and 5 days (IQR 3 – 8) for individuals with an initial viral load of 10^7 - 10^9
231 and $>10^9$ copies/mL, respectively (Figure 2B). Overall, 110/181 (60.8%) of participants became
232 symptomatic before day 8, 45/181 (24.9%) between days 8-10, and 22/181 (12.2%) between days 11-14.

233

234 **DISCUSSION**

235 In our study, we found that increasing viral load values in nasopharyngeal swabs of Covid-19 cases were
236 associated with the greatest risk of transmission measured by SARS-CoV-2 PCR positivity among contacts
237 and also a higher risk of transmission in household environment compared to other indoor situations. In

238 addition, we found that higher viral loads in swabs of asymptomatic contacts were associated to higher risk
239 of developing symptomatic Covid-19 and have shorter incubation periods than those with a lower viral
240 load.

241 To our knowledge this is the largest study that evaluates the relationship of viral load in Covid-19 cases
242 and risk of transmission. In our cohort, a high proportion (67%) of index cases did not cause secondary
243 infections. However, we identified 90 (33%) clusters with transmission events and the multivariate analysis
244 revealed that clusters centered on index cases with high viral load were significantly more likely to result
245 in transmission. Secondary attack rate was under 12% when the index case viral load was $<10^6$ copies/ml
246 compared to more than 20% amongst clusters with the highest viral loads. In line with previous analyses of
247 case-contact clusters,^{9,12,14} we also found that household exposure to an index case was associated with a
248 higher risk of transmission than other types of contact, presumably reflecting duration and proximity of
249 exposure. Age of the contact was also identified in our multivariate analysis as a significant—albeit
250 modest—determinant of transmission. This factor has shown uneven influence across results reported
251 elsewhere, but seems to play a secondary role among adults.^{13,14} Finally, unlike previous analyses that
252 reported a relationship between coughing and transmission,¹³ we did not find any association. This finding
253 suggests that the absence of cough does not preclude significant onward transmission, particularly if the
254 viral load is high. Taken together, our results indicate that the viral load, rather than symptoms, may be the
255 predominant driver of transmission.

256 Importantly, we report that high viral load shortly after exposure in asymptomatic contacts was strongly associated
257 with the risk of developing symptomatic Covid-19 disease. We found an approximately 25% chance of
258 developing symptomatic disease amongst individuals with an initial viral load $<10^7$ copies/mL compared
259 to a more than 60% chance amongst individuals with a viral load $>10^9$. These data may provide rationale
260 for risk stratification for developing illness. Moreover, the initial viral load significantly shifted the
261 incubation time, which ranged from 5 days in participants with a high viral load to 7 days in participants
262 with a low viral load. Our study is the first analysis of prospective data that investigates the association
263 between initial viral load and the incubation time.

264 The study has several limitations. First, asymptomatic people were not enrolled as index cases, affecting
265 our ability to fully characterize all types of transmission chain. Second, we did not find any evidence of
266 decreased risk of transmission in individuals who reported mask use. While this finding collides with the
267 evidence reported elsewhere,⁸ we did not have fine-grained data on type of mask (surgical vs FFP2), use of
268 other measures of PPE or other infection control practices, thus limiting our ability to make clear inferences
269 about the impact of PPE on transmission risk. Third, we used time to symptom onset (with later

270 confirmation of infection) rather than time to positive PCR test based on serial testing. Nonetheless,
271 accurate calculation of the incubation period was feasible because of the prospective nature of the study,
272 accurate identification of exposure by face-to-face interview, and intensive active and passive monitoring
273 of exposed contacts. Also, we followed participants over 14-day periods, thus incubation periods beyond
274 14 days may not have been detected.

275 In summary, our results provide evidence regarding the determinants of SARS-CoV-2 transmission,
276 particularly on the role of the viral load. The higher risk of transmission among individuals with higher
277 viral loads adds to current evidence and encourages assessing viral load in cases with a larger number of
278 close contacts. When a case with high viral load is identified, implementation of reinforced contact tracing
279 measures and quarantines, may be critical to reduce onward transmission. Similarly, our results regarding
280 the risk and expected time to developing symptomatic Covid-19 encourage risk stratification of newly
281 diagnosed SARS-CoV-2 infections based on the initial viral load.

282

283

284 **CONTRIBUTORS**

285

286 **CONFLICTS OF INTEREST**

287 We declare no conflicts of interest

288

289 **ACKNOWLEDGMENTS**

290 The authors would like to thank Gerard Carot-Sans for providing medical writing support during the
291 preparation of the manuscript.

292 **REFERENCES**

- 293 1 La Rosa G, Bonadonna L, Lucentini L, Kenmoe S, Suffredini E. Coronavirus in water environments:
294 Occurrence, persistence and concentration methods - A scoping review. *Water Res* 2020; **179**:
295 115899.
- 296 2 Umakanthan S, Sahu P, Ranade A V., *et al.* Origin, transmission, diagnosis and management of
297 coronavirus disease 2019 (COVID-19). *Postgrad Med J* 2020; **0**: 1–6.

- 298 3 Leclerc QJ, Fuller NM, Knight LE, Funk S, Knight GM. What settings have been linked to SARS-
299 CoV-2 transmission clusters? *Wellcome Open Res* 2020; **5**: 83.
- 300 4 Qian H, Miao T, LIU L, Zheng X, Luo D, Li Y. Indoor transmission of SARS-CoV-2. *medRxiv*
301 2020; : 2020.04.04.20053058.
- 302 5 Hamner L, Dubbel P, Capron I, *et al.* High SARS-CoV-2 Attack Rate Following Exposure at a Choir
303 Practice — Skagit County, Washington, March 2020. *MMWR Morb Mortal Wkly Rep* 2020; **69**:
304 606–10.
- 305 6 Park SY, Kim YM, Yi S, *et al.* Coronavirus disease outbreak in call center, South Korea. *Emerg*
306 *Infect Dis* 2020; **26**: 1666–70.
- 307 7 Muñoz MA, López-Grau M. Lessons learned from the approach to the COVID-19 pandemic in
308 urban primary health care centres in Barcelona, Spain. *Eur J Gen Pract* 2020; **26**: 106–7.
- 309 8 Chu DK, Akl EA, Duda S, *et al.* Physical distancing, face masks, and eye protection to prevent
310 person-to-person transmission of SARS-CoV-2 and COVID-19: a systematic review and meta-
311 analysis. *Lancet* 2020; **395**: 1973–87.
- 312 9 Bi Q, Wu Y, Mei S, *et al.* Epidemiology and transmission of COVID-19 in 391 cases and 1286 of
313 their close contacts in Shenzhen, China: a retrospective cohort study. *Lancet Infect Dis* 2020; **20**:
314 911–9.
- 315 10 Wölfel R, Corman VM, Guggemos W, *et al.* Virological assessment of hospitalized patients with
316 COVID-2019. *Nature* 2020; **581**: 465–9.
- 317 11 La Scola B, Le Bideau M, Andreani J, *et al.* Viral RNA load as determined by cell culture as a
318 management tool for discharge of SARS-CoV-2 patients from infectious disease wards. *Eur J Clin*
319 *Microbiol Infect Dis* 2020; **39**: 1059–61.
- 320 12 Böhmer MM, Buchholz U, Corman VM, *et al.* Investigation of a COVID-19 outbreak in Germany
321 resulting from a single travel-associated primary case: a case series. *Lancet Infect Dis* 2020; **20**:
322 920–8.
- 323 13 Wu J, Huang Y, Tu C, *et al.* Household Transmission of SARS-CoV-2, Zhuhai, China, 2020. *Clin*
324 *Infect Dis* 2020; published online May 11. DOI:10.1093/cid/ciaa557.
- 325 14 Cheng HY, Jian SW, Liu DP, Ng TC, Huang WT, Lin HH. Contact Tracing Assessment of COVID-
326 19 Transmission Dynamics in Taiwan and Risk at Different Exposure Periods before and after
327 Symptom Onset. *JAMA Intern Med* 2020; **180**: 1156–63.
- 328 15 Huang L, Zhang X, Zhang X, *et al.* Rapid asymptomatic transmission of COVID-19 during the
329 incubation period demonstrating strong infectivity in a cluster of youngsters aged 16-23 years
330 outside Wuhan and characteristics of young patients with COVID-19: A prospective contact-tracing
331 study. *J Infect* 2020; **80**: e1–13.
- 332 16 Liu T, Gong D, Xiao J, *et al.* Cluster infections play important roles in the rapid evolution of
333 COVID-19 transmission: a systematic review. *Int J Infect Dis* 2020; **99**: 374.
- 334 17 Backer JA, Klinkenberg D, Wallinga J. Incubation period of 2019 novel coronavirus (2019- nCoV)
335 infections among travellers from Wuhan, China, 20 28 January 2020. *Eurosurveillance* 2020; **25**:
336 20–8.
- 337 18 Li Q, Guan X, Wu P, *et al.* Early transmission dynamics in Wuhan, China, of novel coronavirus-
338 infected pneumonia. *N Engl J Med* 2020; **382**: 1199–207.

- 339 19 Leung C. The difference in the incubation period of 2019 novel coronavirus (SARS-CoV-2)
340 infection between travelers to Hubei and nontravelers: The need for a longer quarantine period.
341 *Infect Control Hosp Epidemiol* 2020; **41**: 594–6.
- 342 20 Mitja O, Ubals M, Corbacho M, *et al.* A Cluster-Randomized Trial of Hydroxychloroquine as
343 Prevention of Covid-19 Transmission and Disease. *medRxiv* 2020; : 2020.07.20.20157651.
- 344 21 Catalan Ministry of Health. Catalan epidemiological surveillance system.
345 http://salutpublica.gencat.cat/ca/ambits/vigilancia_salut_publica/ (accessed March 28, 2020).
- 346 22 Centers for Disease Control and Prevention (CDC). CDC 2019-Novel Coronavirus (2019-nCoV)
347 Real-Time RT-PCR Diagnostic Panel. Cat. # 2019-nCoV EUA-01. 2020.
348 <https://www.fda.gov/media/134922/download> (accessed May 21, 2020).
- 349 23 World Health Organization. The First Few X (FFX) Cases and contact investigation protocol for
350 2019-novel coronavirus (2019-nCoV) infection, version 2.
351 [https://www.who.int/publications/i/item/the-first-few-x-\(ffx\)-cases-and-contact-investigation-](https://www.who.int/publications/i/item/the-first-few-x-(ffx)-cases-and-contact-investigation-protocol-for-2019-novel-coronavirus-(2019-ncov)-infection)
352 [protocol-for-2019-novel-coronavirus-\(2019-ncov\)-infection](https://www.who.int/publications/i/item/the-first-few-x-(ffx)-cases-and-contact-investigation-protocol-for-2019-novel-coronavirus-(2019-ncov)-infection) (accessed Sept 21, 2020).
- 353

354 **Tables**

355 **Table 1:**

356 **Baseline Characteristics of linked transmission clusters**

Cluster Size	Median (IQR)	2 (1-3)
Index Case Age	Years – Mean (SD)	42 (13)
Index Case Sex	Female	202
Index Case Log Viral Load	Median (IQR)	8 (6-9)
Contacts Age	Years – Mean (SD)	42 (15)
Contacts Gender	Female	385
	Male	205
	Missing	63
Baseline PCR of Contact Case	Positive	93
Contact	HCW	254
	Household	382
	Nursing Home	21
	Unknown	96

357

358

359 **Table 2: Univariate and multivariate linear regression of association between Index case variables**
 360 **and log₁₀ viral load**

Characteristic		Log ₁₀ Viral Load/ml	Unadjusted β coefficient (95% CI)	p	Adjusted β coefficient (95% CI)	p
Case Age		N/A	0.002 (-0.02 – 0.02)	0.78	0.005 (-0.01 – 0.02)	0.55
Case Sex	Male	8.15 (7.54 – 8.77)	Reference		Reference	
	Female	8.04 (7.47 – 8.6)	-0.238 (-0.72 – 2.4)	0.33	-0.12 (-0.60 – 0.36)	0.63
Cough	Absent	7.82 (7.24 – 8.41)	Reference		Reference	
	Present	8.37 (7.78 – 8.95)	0.66 (0.22 – 1.1)	0.003	0.55 (0.11 – 0.99)	0.02
Dyspnea	Absent	7.97 (7.5-8.43)	Reference		Reference	
	Present	8.22 (7.45-8.99)	0.27 (-0.40 – 0.94)	0.42	0.26 (-0.41 – 0.92)	0.45
Fever	Absent	7.77 (7.16 – 8.38)	Reference		Reference	
	Present	8.42 (7.86-8.98)	0.80 (0.36 – 1.24)	0.0004	0.64 (0.20 – 1.09)	0.005
Anosmia	Absent	8.32 (7.76 – 8.88)	Reference		Reference	
	Present	7.87 (7.25-8.49)	-0.57 (-1.0 - -0.09)	0.02	-0.45 (-0.92 – 0.02)	0.06
Rhinitis	Absent	7.60 (7.23 – 7.98)	Reference		Reference	
	Present	8.59 (7.65-9.52)	0.88 (-0.05 – 1.82)	0.06	0.98 (0.06 – 1.91)	0.04

361

362

363

364 **Table 3: Risk factors for transmission of SARS-CoV-2**

		Unadjusted Odds Ratio	Confidence Interval	p	Adjusted Odds Ratio	Confidence Interval	p
Index case age (per year)		1.02	0.99-1.05	0.07	1	0.99-1.03	0.46
Female Index Case		0.74	0.4-1.36	0.33	0.66	0.35-1.25	0.21
Index Case Viral Load (per Log ₁₀ change)		1.27	1.09-1.48	<0.01	1.3	1.1-1.5	<0.01
Index Case Cough		1.0	0.55-1.82	0.99	1.1	0.69 – 2.2	0.45
Index Case Dyspnea		0.80	0.31-2.07	0.64	0.76	0.3 – 1.9	0.58
Age of Contact		1.03	1.01-1.05	<0.01	1.02	1.01 – 1.04	<0.01
Female Contact		0.93	0.58-1.49	0.77	1.25	0.7 – 2.1	0.4
Mask Use	Never	1 (Reference Group)	N/A	N/A	1 (Reference Group)	N/A	N/A
	Always	0.93	0.47 – 1.83	0.84	1.51	0.73 – 3.31	0.27
	Unknown	1.18	0.59 – 2.36	0.47	1.47	0.71-3.02	0.30
Contact Type	Healthcare Work	1 (Reference Group)	N/A	N/A	1 (Reference Group)	N/A	N/A
	Household	3.07	1.68-5.62	<0.01	2.7	1.4 – 5.06	<0.01
	Nursing Home	1.75	0.19 -16.01	0.62	2.06	0.26 – 16.6	0.5
	Other	0.32	0.03-3.05	0.32	0.49	0.04 – 5.5	0.57

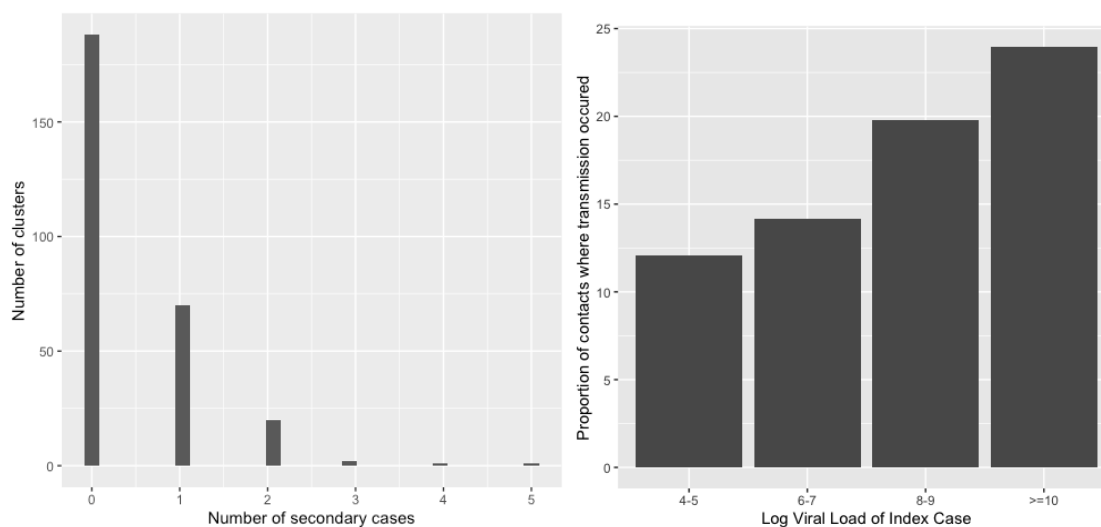
365

366

367

368

369 **Figure 1: Transmission in a cluster**



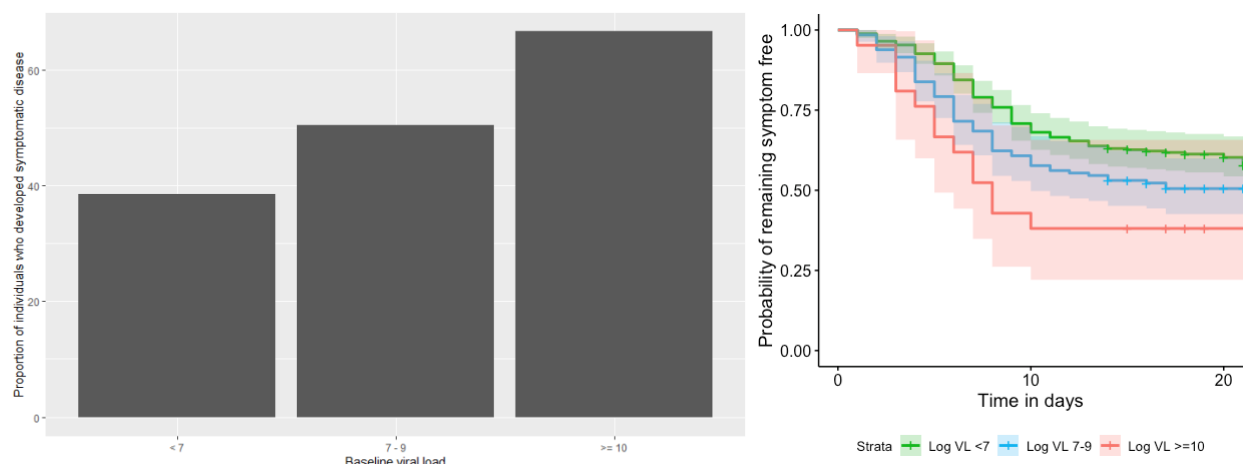
370

371 (A) Number of secondary cases per cluster. (B) Relationship between viral load of the index case and the
372 proportion of contacts developing Covid-19. Numbers 18/149 in group 10^4 - 10^5 RNA copies/ml; 30/2012
373 in group 10^6 - 10^7 ; 59/298 in group 10^8 - 10^9 ; 17/71 in group $\geq 10^{10}$.

374

375

376 **Figure 2. Risk of developing symptomatic Covid-19 according to characteristics of the contact at**
377 **enrolment.**

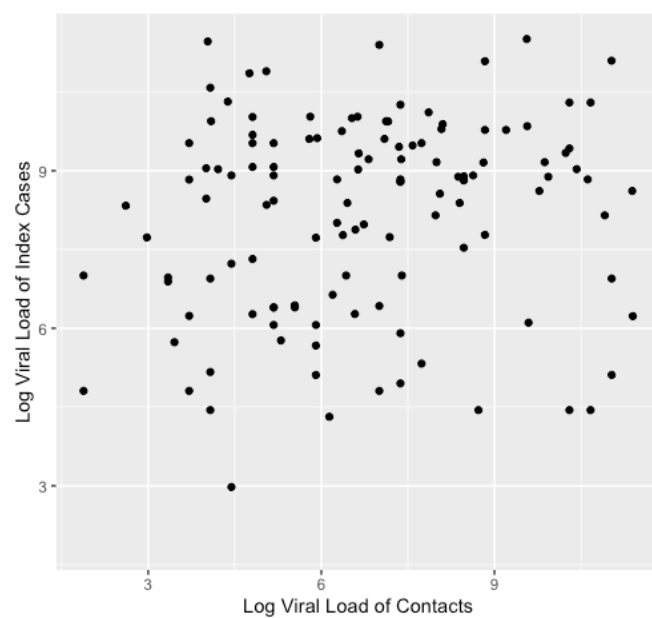


378
379 (A) probability of symptomatic disease by viral load. (B) time to symptomatic disease by viral load.

380

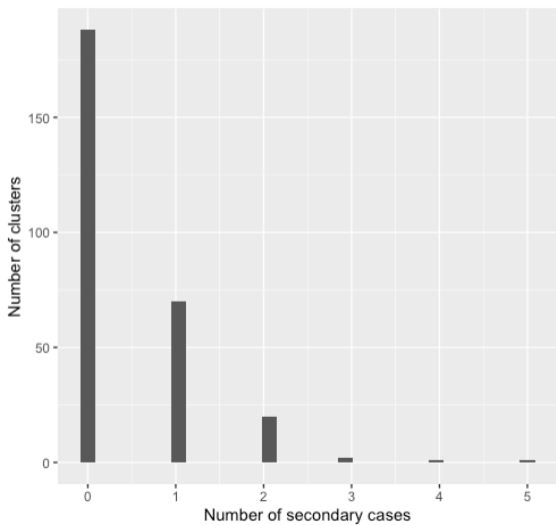
381

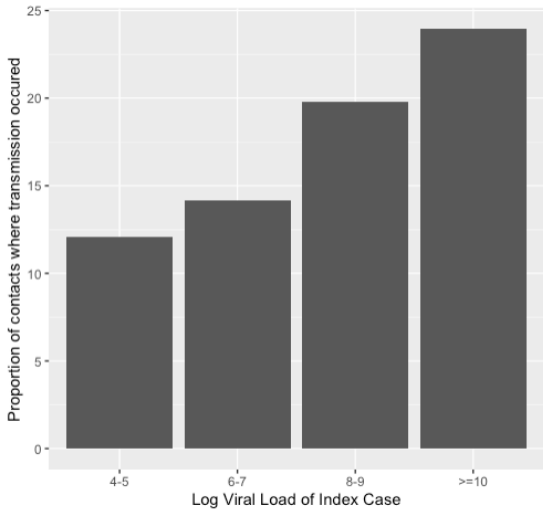
382 **Supplementary Figure 1: Relationship between Index Case and Contacts Viral Load**

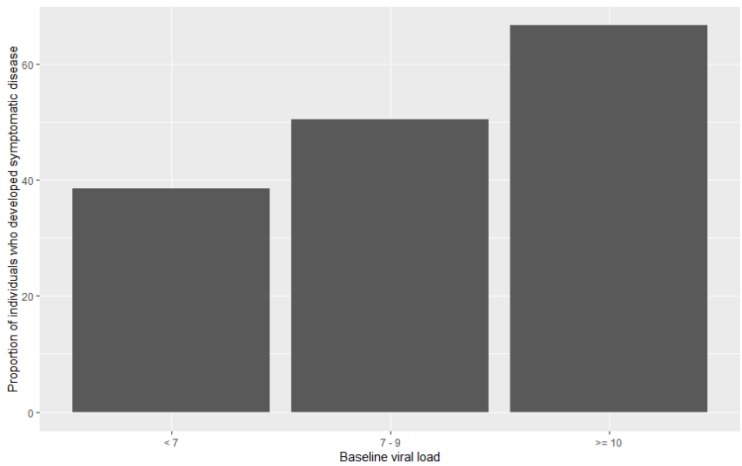


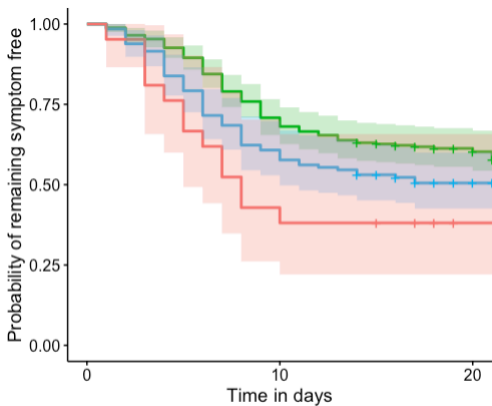
383


384









Strata  Log VL <7  Log VL 7-9  Log VL >=10