

1 Effect of park use and landscape structure on COVID-19 2 transmission rates

3 Thomas F. Johnson¹, Lisbeth A. Hordley¹, Matthew P. Greenwell¹, Luke C. Evans¹

4 1: Ecology and Evolutionary Biology, School of Biological Sciences, University of Reading, Reading, UK

5 Corresponding author: Thomas Frederick Johnson (Thomas.frederick.johnson@outlook.com)

6 Abstract

7 The COVID-19 pandemic has had severe impacts on global public health. In England, social
8 distancing measures and a nationwide lockdown were introduced to reduce the spread of the virus.
9 Green space accessibility may have been particularly important during this lockdown, as it could
10 have provided benefits for physical and mental wellbeing. However, the effects of public green
11 space use on the rate of COVID-19 transmission are yet to be quantified, and as the size and
12 accessibility of green spaces vary within England's local authorities, the risks and benefits to the
13 public of using green space may be context-dependent. To evaluate how green space affected
14 COVID-19 transmission across 299 local authorities (small regions) in England, we calculated a
15 daily case rate metric, based upon a seven-day moving average, for each day within the period 1st
16 June - 30th November 2020 and assessed how baseline health and mobility variables influenced
17 these rates. Next, looking at the residual case rates, we investigated how landscape structure (e.g.
18 area and patchiness of green space) and park use influenced transmission. We first show that
19 reducing mobility is associated with a decline in case rates, especially in areas with high population
20 clustering. After accounting for known mechanisms behind transmission rates, we found that park
21 use (showing a preference for park mobility) was associated with decreased residual case rates,
22 especially when green space was low and contiguous (not patchy). Our results suggest that a
23 reduction in overall mobility may be a good strategy for reducing case rates, endorsing the success
24 of lockdown measures. However, if mobility is necessary, outdoor park use may be safer than other
25 forms of mobility and associated activities (e.g. shopping or office-based working).

26

27 **Keywords**

28 COVID; coronavirus; ecosystem services; fragmentation; green space; health; park use; public
29 health

30 **1. Introduction**

31 The COVID-19 pandemic has had severe impacts on public health (Mahase, 2020) and remains an
32 emergency of international concern. In response to the pandemic, the UK government has
33 implemented social distancing measures and nationwide lockdowns to control the spread of the
34 virus (UK Government, 2020a). During these periods, the general public were limited in the
35 distances they could travel and, at certain points, the number of times they could leave their
36 residence each day; with an allowance of one non-essential trip during the peak of transmission (UK
37 Government, 2020a). Though social restrictions have fluctuated in response to case rates, social
38 distancing has been constant and there has been a general message throughout England of
39 reduced movement and staying local where possible for much of 2020. These restrictions have
40 meant that members of the public became more reliant on amenity spaces close to their residences
41 for daily exercise and/or recreation (Geng et al., 2021). Green spaces may provide a comparatively
42 safe place for these activities, though the amount and structure of green space available for public
43 use differs widely across the UK. Here we evaluate if differences in the availability and structure of
44 public green space within local authorities (local government bodies responsible for public services
45 within a specified area) in England, and their usage, influenced the local rate of incidence of
46 COVID-19.

47 Green spaces, which we define as vegetated non-arable areas - see Taylor & Hochuli (2017) for
48 further details - provide important cultural and recreational ecosystem services, benefiting both
49 mental and physical health (Beyer et al., 2014; Cohen-Cline et al., 2015). These benefits are usually
50 considered in terms of reducing the prevalence or severity of conditions such as mental stress
51 (Nutsford et al., 2013) or cardiovascular disease (Seo et al., 2019), and some of these benefits have
52 continued throughout the pandemic (Slater et al., 2020; Soga et al., 2020). However, the influence
53 of green space use on disease transmission rates has received less investigation, but is of great

54 importance as green space use has increased rapidly during the pandemic (Venter et al., 2020).
55 Furthermore, it is unclear how 'safe' green spaces are during periods of higher incidence especially
56 in densely populated areas (Shoari et al., 2020).

57 We anticipate that green space could impact COVID-19 incidence in two ways: general health and
58 wellbeing, and transmission. It is conceivable that general health and well-being is greater in areas
59 with more green space, as higher levels of green space are associated with healthier populations
60 (Maas et al., 2006; Mitchell and Popham, 2007; van den Berg et al., 2015). As COVID-19 has a
61 greater impact on those with underlying health conditions and sedentary lifestyles (Hamer et al.,
62 2020; Jordan et al., 2020), green space may, therefore, indirectly provide some level of resilience to
63 the disease and/or reduce incidence. However, our key focus here is on transmission, as it is likely
64 that the major benefits of outdoor recreation in green space are related to a lower risk of infection.
65 Current evidence suggests that COVID-19 is spread via droplet infections, contact with
66 contaminated individuals or surfaces, and through aerosol transmission (Bahl et al., 2020). These
67 risks are likely minimised in green space areas, as generally, they are less spatially confined, and
68 with fewer surfaces prone to frequent touching or contact. Consequently, green space use may
69 represent a safe form of recreation by minimising risk of infection.

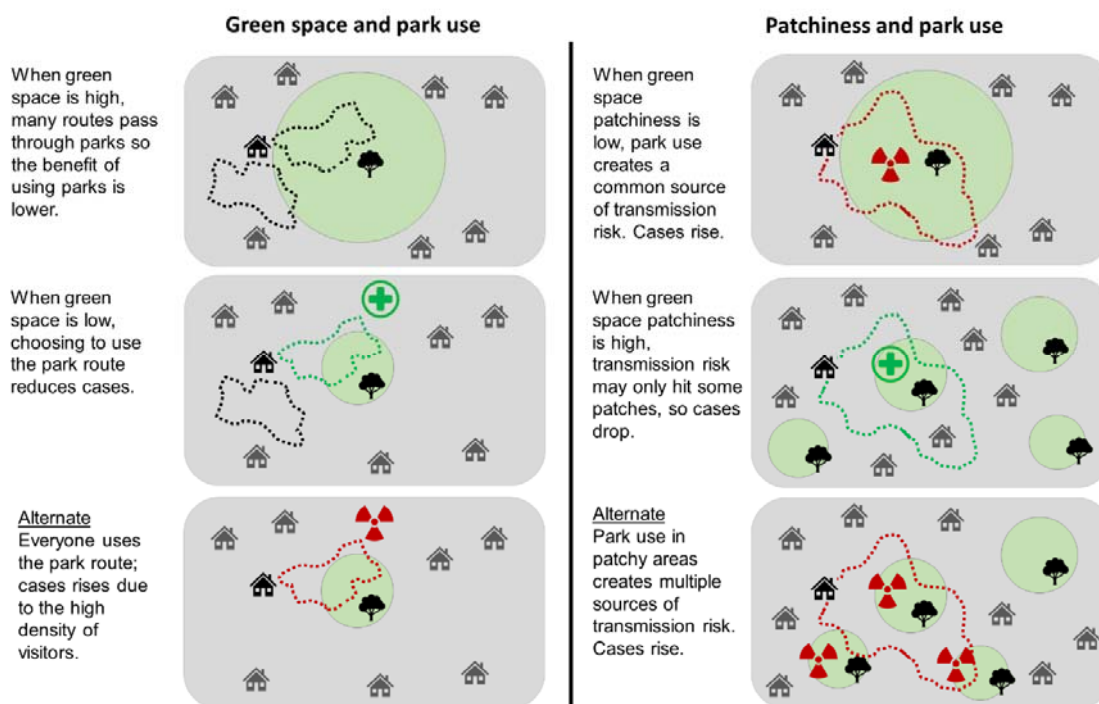
70 In England and Wales approximately 87% of the population are within a 10-minute walk of public
71 parks and gardens (Shoari *et al.* 2020). However, both the structure and amount of green space
72 vary between local authorities, and both could influence COVID-19 incidence. Generally, it has been
73 found that greater health benefits are derived from larger areas of green space (Ekkel and de Vries,
74 2017). In the context of disease transmission, larger areas may offer more space per individual,
75 lowering transmission risk. However, smaller fragmented areas of green space are common in
76 many residential areas and are, therefore, more accessible to much of the population and may be
77 used more frequently. Further, if public use is distributed across fragmented green spaces, the
78 wider effects of a transmission incident could be reduced, as contacts would be isolated to the
79 members of a neighbourhood or community adjacent to a particular green space. This process can
80 be seen in animal diseases where habitat fragmentation reduces transmission due to limiting
81 interactions between groups in different patches (Mccallum and Dobson, 2002). However,

82 fragmentation also typically results from reductions in the total area of green space (Fahrig, 2013),
83 leading to less overall space per individual, possibly increasing transmission rates.

84 Whilst the effects of green space on COVID-19 transmission are currently unclear, other
85 environmental and social factors are known to influence both the spread and severity of the
86 disease. For example, human mobility drives the spread of infectious diseases (Kraemer et al.,
87 2019) and studies have shown that reducing social interactions by restricting mobility can lead to a
88 decrease in transmission rates of COVID-19 (Chinazzi et al., 2020; Gatto et al., 2020). Furthermore,
89 as diseases are often spread along transport links and in offices (Gatto et al., 2020; Zhang et al.,
90 2018), enforcing lockdown situations that curtail movement, such as requiring people to work from
91 home, can have a great effect on reducing transmission rates. In addition to mobility, health and
92 social factors have been associated with increased severity of the disease such as age, underlying
93 health conditions, and deprivation (Richardson et al., 2020; Williamson et al., 2020). Consequently,
94 any possible effects of green space must be considered after attempting to account for factors that
95 could increase recorded incidence.

96 Given the stated benefits of green space, it is important to attempt to evaluate using available
97 evidence, the impact of green space use on transmission rates. In addition, understanding the
98 influence of green space on COVID-19 incidence could provide an estimate of the value of green
99 space for maintaining public health if subjected to a resurgence of the COVID-19 pandemic. And, in
100 the longer term, indicate the potential benefits of local green space on future pandemics of
101 comparative severity. Here, using time series of COVID-19 cases within local authorities in
102 England, we explore how both green space use and access (i.e. availability of green spaces)
103 influence COVID-19 incidence. Our approach is to first construct a baseline transmission model to
104 attempt to control for factors likely to influence recorded COVID-19 incidence and then to explore
105 how green space influenced case rates above or below this baseline. We predict that green space
106 and the way it is structured, in itself, will have no effect on case rates. However, we expect that an
107 increase in park use (i.e. spending time in green space) will make the structure and availability of
108 green space important (Figure 1). Specifically, when green space is low, park use will likely
109 represent a safer form of movement (e.g. compared to shopping), unless the green space becomes

110 a congregation zone that inflates transmission risk. Furthermore, we predict that case rates will be
111 lower when green space is fragmented, as the disease will be contained in more localised areas.
112 For example, if the local authority has one large park the presence of an infected individual puts
113 more people at risk than an infected individual attending one of many parks. Further, we predict, as
114 others have found (Kraemer et al., 2020), that increased mobility will increase incidence, but that
115 park use (measured as relative use of parks) is the safest form of mobility (e.g. preferable over
116 shopping).



117

118 **Figure 1.** Mechanisms by which green space and patchiness could interact with park use to influence
119 COVID-19 transmission. The upper two rows describe the primary predictions, whilst the bottom row explains
120 alternate predictions. All variables (e.g. population density) except green space and patchiness, respectively,
121 are held at a constant in these predictions. Green circles with a tree icon indicate the presence of green
122 space. Dotted lines indicate walking routes, which becomes park use when the line overlaps a green space.
123 The green health symbol indicates that the landscape metric and park use is beneficial, whilst the red toxic
124 symbol indicates a risk.

125 2. Methods

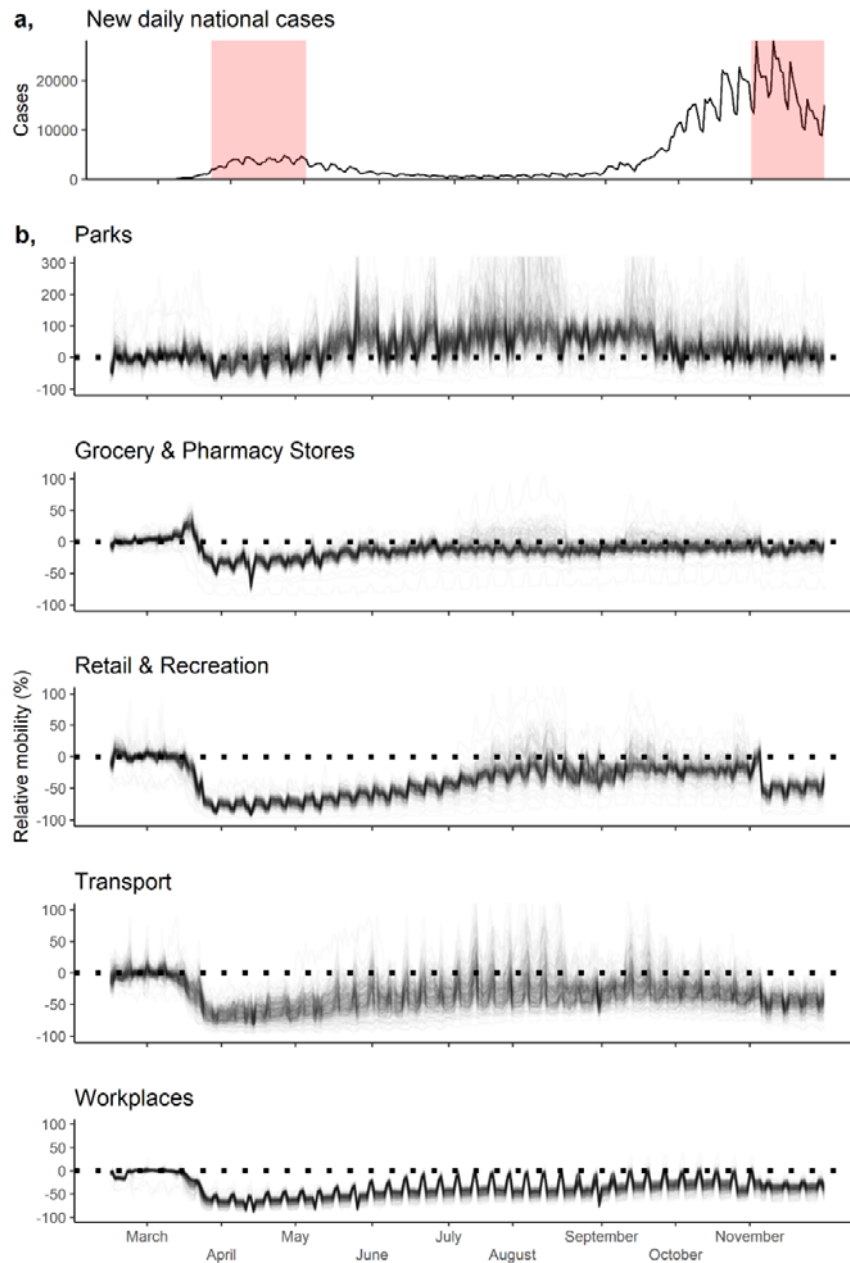
126 2.1 Data compilation

127 2.1.1 COVID-19 case rates

128 We compiled daily lab-confirmed cases (incidence) of COVID-19 in England from February 15th
129 2020 up to 30th November 2020 (available from <https://coronavirus.data.gov.uk/>). We only included
130 cases until November, as in December England began an aggressive vaccination campaign and the
131 more infections COVID B1.1.7 variant began to spread widely – factors that could confound our
132 models (see below). Cases were recorded at the lower tier local authority (administrative areas for
133 local government) level (N = 299). These local authorities vary in size (3 – 26,000km²),
134 demographics, cultures, and in socio-economic circumstances. Incidence over this time was highly
135 variable with periods of rapid increases, which were then relatively controlled by periods of national
136 lockdown (Figure 2). To determine factors influencing COVID-19 transmission, we estimated case
137 rates for each day in each local authority. Case rates were derived by fitting log-linear models,
138 regressing the natural log of daily cases against date (days). To reduce the effect of noise, we fit
139 these regressions over 7-day moving windows (Figure S1) e.g. to estimate the case rate on March
140 4th, a regression was fit between cases from March 1st – 7th, for March 5th a regression was fit
141 between March 2nd – 8th. The coefficients of these models provided a daily case rate. We converted
142 these coefficients into a daily percentage change in cases.

143

144



145

146 **Figure 2.** a) Daily lab-confirmed cases across England, with lockdown periods (with restricted mobility)
147 indicated with red shading. b) Google mobility trends (Google, 2020), describing change in mobility over time
148 for five different categories, relative to a baseline period (3rd of January to the 6th of February 2020). We
149 excluded the sixth category 'residential mobility' as it is measured differently to all other categories. Each line
150 within the mobility trends represents a local authority. All plots extend from the 15th of February 15th to the 30th
151 of November 30th 2020. For the 'parks' plot, we limited the y-axis at 300% to exclude a small number of
152 extreme observations with high park use.

153

154 *2.1.2 Baseline transmission variables*

155 We compiled variables which describe the mechanisms considered to influence case rates (Table
156 1). Firstly, we derived two variables which describe the structure of the local authority population:
157 population density – residential population density (controls for green space in the green
158 transmission model below); and population clustering – Moran’s I spatial autocorrelation of
159 residential population density (controls for patchiness in the green transmission model below).
160 Secondly, we compiled three variables which characterise the human population in each local-
161 authority prior to COVID-19: health – risk of premature death or a reduction in quality of life due to
162 poor mental or physical health (Ministry of Housing Communities & Local Government, 2019);
163 demography - the percentage of the population over 70 (Office for National Statistics, 2021a);
164 economy – the percentage of unemployed-individuals in the non-retired local authority population
165 (UK Government, 2018). A high baseline health, whereby few individuals have pre-existing
166 underlying health conditions, may decrease the chances of an individual presenting with severe
167 symptoms of COVID-19 and further passing the virus to others (Clark et al., 2020). Accounting for
168 this baseline health may also assist in controlling for the presence of asymptomatic undetected
169 infections in case rates.

170

171 **Table 1.** Description of variables within the baseline and green transmission models, including the
 172 scale at which the variable is measured, where ‘Static’ indicates only one value is derived per local
 173 authority, whilst there are unique values for each case rate in ‘Timeseries’ variables.

Variable	Description	Scale
<i>Baseline transmission model</i>		
Population density	Local authority population size in mid-year 2019 divided by local authority area [in sq.km]. Source: Office for National Statistics (2021c)	Static
Population clustering	Moran’s I spatial autocorrelation of residential population density in 2011, extracted from the UK’s gridded 1km resolution population raster. Source: UK Government (2020b)	Static
Health	The health aspect of the multiple deprivation index, describing the risk of premature death or a reduction in quality of life due to poor mental or physical health. Low values indicate greater health deprivation. Source: Ministry of Housing Communities & Local Government (2019)	Static
Demography	Percent of local authority population aged over 70 in June 2019. Source: Office for National Statistics (2021b)	Static
Economy	Percent of local authority population (adult non-retired) unemployed in December 2019. Source: UK Government (2020c)	Static
Mobility change	Daily mean overall mobility in each local authority across five of the Google mobility metrics: transport, workplaces, parks, grocery & pharmacy stores, and retail & recreation. Overall mobility averaged over the previous 2 to 12 days before each case rate. Source: Google (2020)	Timeseries
Community cases	Seven-day rolling average in cases within each local authority. Variable also included within the green transmission model. Source: https://coronavirus.data.gov.uk/	Timeseries
<i>Green transmission model</i>		
Green space	Green space per person (m ²). Derived by dividing total green space area in each local authority by the local authority’s population size. We consider green spaces as any area meeting the following land cover types: broadleaved woodland, coniferous woodland, improved grassland, neutral grassland, calcareous grassland, acid grassland, fen, marsh and swamp, heather, heather grassland, and bog. Source: Rowland et al. (2017)	Static
Patchiness	Median frequency of parks within a 1km buffer around local authority houses. Source: Office for National Statistics (2021a)	Static
Park use	Contribution of park use to the overall mobility metric, derived by extracting the residuals of a linear model between park mobility (response) and overall mobility (predictor) within each local authority. A positive residual value indicates park use exceeds what we would expect given park and overall mobility trends within the local authority. As with the mobility change variable, park use is averaged over the 2 to 12 days before each case rate. Source: Google (2020)	Timeseries

174

175

176 National lockdowns, and the resulting reduction in people's mobility, were an important tool for
177 reducing transmission within England during the COVID-19 pandemic. We used Google Community
178 Mobility Reports to track human mobility and its effect on case rates (Google, 2020). These reports
179 chart movement trends over time across six categories: retail and recreation, groceries and
180 pharmacies, transit stations, workplaces, residential, and parks. These trends describe how visitors
181 to, or time spent in, each of the six categories changed compared to a pre-pandemic 5-week period
182 (the median value from 3rd January to 6th February 2020). As the mobility data contained missing
183 values (c.12%) for some local authorities and dates (Figure S2), we were conscious these missing
184 values may lead to statistical inference errors within the models below. As a result, we filled missing
185 mobility values using *mice: multiple imputation chained equations* R package and '2l.pan' imputation
186 approach, which is a hierarchical normal model within homogenous within group variances (Van
187 Buuren and Groothuis-Oudshoorn, 2011). This hierarchical structure allowed us to model mobility
188 trends accounting for differences in local authorities. We included the following terms within our
189 imputation model: all six Google mobility timeseries, as well as a 1-day lag period for each
190 timeseries, the number of days along the timeseries since February 15th with a cubic polynomial
191 term, an indicator variable to describe whether each day was a weekend or not, and the timeseries
192 of daily COVID-19 cases within the local authority. We also included terms that didn't vary through
193 time, including: the latitude and longitude of the local authority, and all local authority covairates
194 within the baseline and green transmission models below (population density, population clustering,
195 health, demography, economy, green space, and patchiness). Finally, we also included some
196 national metrics that could infleunce local mobility, including: a timeseries of daily COVID-19 cases
197 measured at the national scale, as well as the mean daily temperature and precipitation within
198 Central England. We ran this model through 10 chains, each with 20 iterations, and 20 pan
199 iterations. The imputation model converged.

200 Conventionally, as part of a multiple imputation framework, these 10 chains should then be
201 modelled seperately and coefficient standard errors should be inflated with Rubin's rules (Little and
202 Rubin, 2002). However, given the small percentage of missing values, and that there are currently
203 no well defined steps for using Rubin's rules in genralized additive models (see our models below),

204 we instead averaged mobility values across the 10 chains to produce mean estimates of mobility for
205 each category, day, and local authority i.e. conducting single imputation. We ensured the
206 imputations produced plausible values (Figure S3). From this mobility dataset, we derived a variable
207 which described overall mobility change for each date in each local authority, which is the average
208 mobility change across five of the six categories (excluding residential) for each day in each local
209 authority. We excluded the residential mobility category as it is inversely correlated with all other
210 categories and is measured differently (Google, 2020). However, as there is a delay between a
211 mobility reduction and a case rate reduction, we lagged the overall mobility change metric by linking
212 each case rate with the mean mobility change from 2 – 12 days prior.

213 *2.1.3 Green variables*

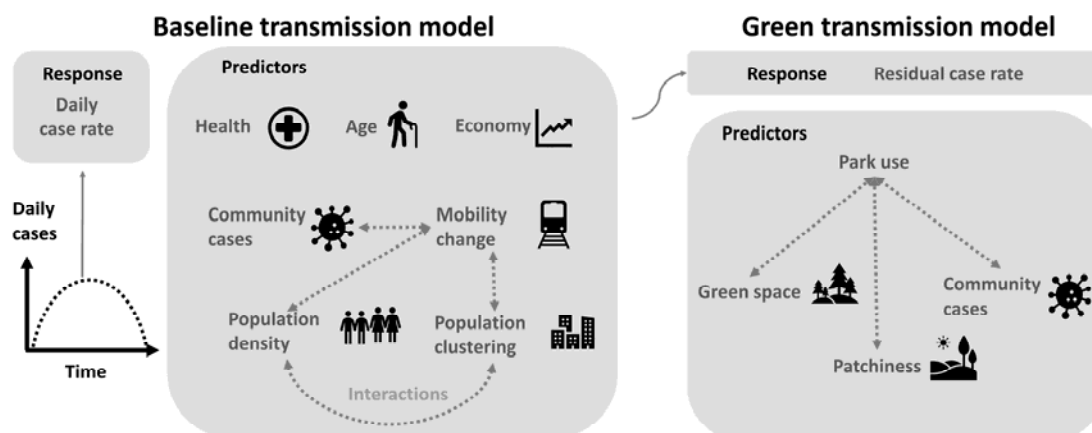
214 We compiled two variables which describe the structure of green spaces in each local authority:
215 patchiness – median frequency of parks within a 1km² radius around households in the local
216 authority (Office for National Statistics, 2021c); green space – available green space per person
217 (m²) within the local authority, derived by dividing the green-cover area by the local authority
218 population size. Green-cover area was calculated from the UKCEH 2015 25metre land cover raster
219 (Rowland et al., 2017) and included the following landscape categories: broadleaved woodland,
220 coniferous woodland, improved grassland, neutral grassland, calcareous grassland, acid grassland,
221 fen, marsh and swamp, heather, heather grassland, and bog. For this green-cover area calculation,
222 we set a 1km buffer around the local authority, to represent green space access of households on
223 the local authority border.

224 Using the mobility dataset, we also produced a park use variable, which represents how parks are
225 used relative to overall mobility. This park use metric is derived by fitting a linear model between
226 park use and overall mobility within each local authority, and extracting the residual park use, where
227 positive values represent a preference for using parks over other forms of mobility for a given date
228 (in the original percentage units). Parks include public gardens, castles, national forests, campsites,
229 observation points, and national parks, but exclude surrounding countryside in rural areas. As a
230 result, the Google (2020) definition of parks differs slightly to the landscape categories used in our

231 green space metric but are our best available representation of how green space was used during
232 the pandemic. As in the overall mobility change metric, park use represents the mean use of parks
233 in the prior 2 to 12 days.

234 2.2 Modelling

235 We developed two core models (Figure 3): baseline transmission – aimed at controlling for the
236 major mechanisms influencing case rates; and green transmission – impact of landscape structure
237 and park use on case rates. The baseline and green transmission models are both focussed on
238 case rates, but we anticipated that any effects of green space on COVID-19 case rates were likely
239 to be much smaller than variables known to influence disease transmission (e.g. population
240 density). As a result, we structured our analyses to first account for the presence of these more
241 influential variables in a baseline transmission model, and then in the green transmission model, we
242 explored how green areas (the focus of this study) can alter the residuals of these case rates.
243 Conventionally, it is advised to include all variables within one regression instead of analysing the
244 residuals separately (Freckleton, 2002). However, variables were highly correlated (e.g. population
245 density and green space are derived in similar ways), and resulted in multicollinearity issues.
246 Dealing with the major mechanisms first (e.g. population density) mitigated these multicollinearity
247 issues.



248

249 **Figure 3.** Model structure for baseline transmission and green transmission difference models, depicting the
250 process for developing the response variables, as well as the predictors used in each model.

251 To control for the baseline health and transmission mechanisms influencing COVID-19 case rates,
252 we developed a generalized additive model within the *mgcv* R package (Wood, 2021), with case
253 rate as the response – inverse hyperbolic sine transformed to address heavy tailed residuals. We
254 included the following parameters as linear predictors: health, demography, economy, population
255 density (\log_{10} transformed), population clustering, and mobility change. We also included
256 interactions between population density and clustering, population density and mobility change, and
257 population clustering and mobility change. In model development, it was clear that the residuals
258 were experiencing extreme positive temporal autocorrelation, where case rate values were very
259 similar to values from the previous day. As a result, we also included the previous days case rate
260 (one day lag) as a linear predictor in the model. We included random intercept smoothing over the
261 local authorities to account for the non-independence of multiple case rates within the same local
262 authorities. Due to working hour restrictions in the England, case counts on Saturdays and Sundays
263 were largely underestimated, and then over-estimated on Mondays and Tuesdays. As a result, we
264 also included a cyclic smoothing term (with up to 7 knots) over day of the week to capture reporting
265 biases and control for daily variation (days within a week) in case reporting. We extracted the
266 residuals from this model for the green transmission model.

267 To assess how landscape structure and park use influenced residual case rates, we again
268 developed a generalized additive model developed, with residual case rates from the baseline
269 transmission models as the response, as well as the following linear predictor parameters: park use,
270 green space (\log_{10} transformed), patchiness, as well as interactions between park use and green
271 space, and park use and patchiness. These models also included random intercept smoothing over
272 local authorities, but we did not control for the smoothing over days of the week, which was
273 addressed in the earlier baseline transmission model.

274 *2.2.1 Sensitivity analysis*

275 We opted to fill missing mobility values with imputation instead of using complete-case analyses,
276 where any observations with missing mobility data are removed. However, given the small
277 percentage of missing values, and that the mobility data is averaged across five categories, and

278 then again through time, we wanted to ensure model coefficients did not change drastically under
279 imputation, which could be a sign of a statistical inference error (Johnson et al., 2021). As a result,
280 we repeated the analyses using only complete-case observations and compared model coefficients
281 between the missing value approaches. Given the similarity in the complete-case and imputation
282 coefficients (Figure S4), we continued using the coefficients from the imputation model which
283 covered a greater array of local authorities.

284 In both the baseline and green transmission models, we were conscious that some parameter
285 effects may have varied through time. For example, some covariates may have been particularly
286 influential prior to mandatory mask wearing in shops on July 24th 2020. As a result, we extracted the
287 first four weeks of data from our case rate dataset and ran the models on this subset. We then
288 shifted the data forwards one week and re-ran the models, repeating this procedure (moving
289 window), creating 40 replicates of the coefficients each representing a different-overlapping period
290 of time between February and November 2020. From this, we established that the majority of
291 coefficients were stable over time (Figure S5), but the mobility covariates (mobility change and park
292 use) were highly variable, and mobility effects were greatest when cases were at their highest. As a
293 result, we amended the baseline and green transmission models to include an interaction between
294 the mobility variables and the number of cases (averaged over the nearest 7 days) in the local
295 authority at a given moment in time (see Equation S1-2 for the final model structures). We also
296 noted that effects were greatest in the first lockdown but also fluctuated substantially. We suspect
297 the large effects are genuine, but given there were temporal and spatial issues with case-testing
298 availability in the first lockdown, we opted to remove this section of data to limit biases. The final
299 dataset covered June 1st to November 30th.

300 *2.2.2 Model checking*

301 We standardised (subtracting values from their mean and dividing by their standard deviation) all
302 predictor variables in the models to determine effect sizes and reduce multicollinearity where
303 interactions are present. All model assumptions passed e.g. multicollinearity (variance inflation
304 factors less than 3 within both the baseline and green transmission model), concavity (observed

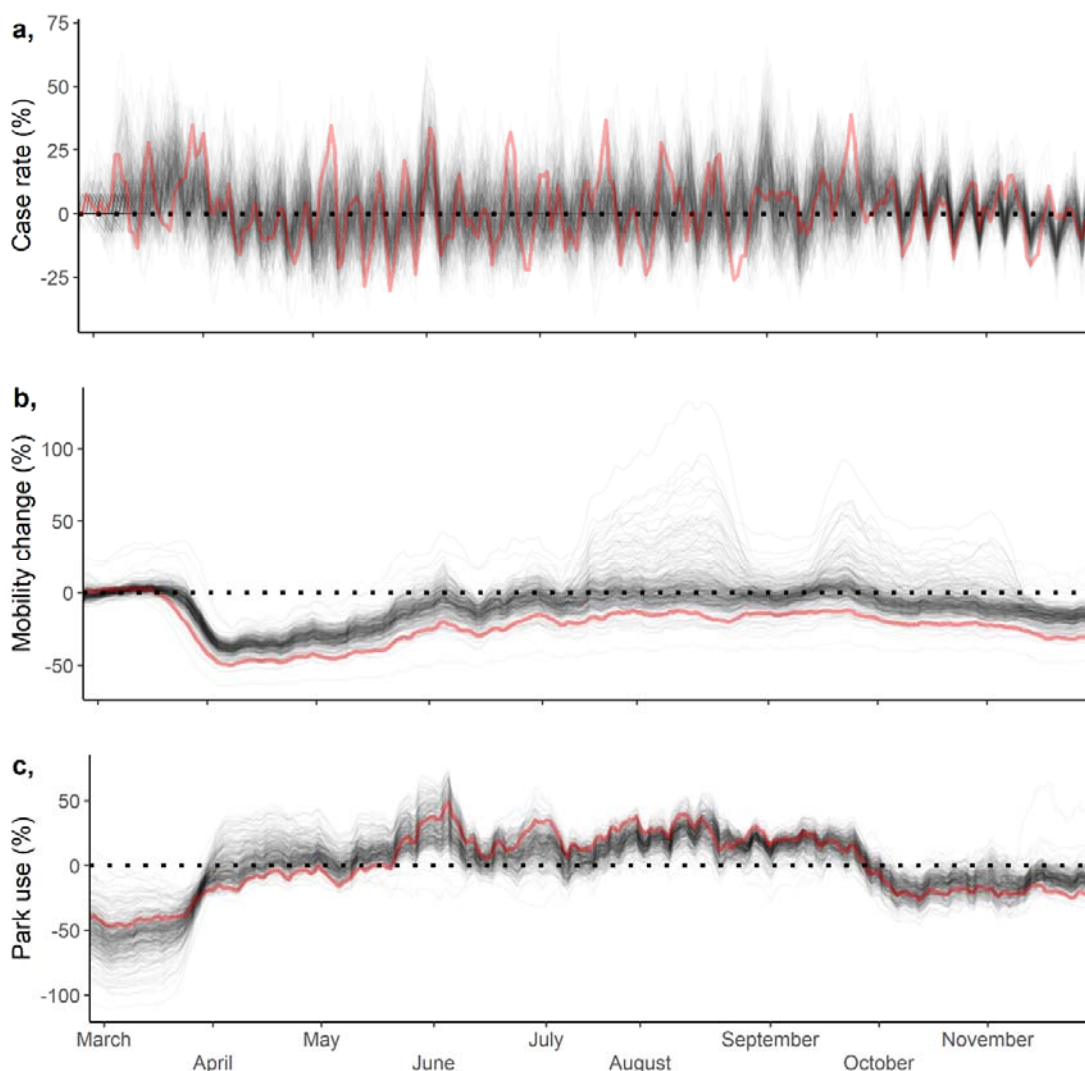
305 and estimated concavity less than 0.1), absence of spatial (Moran's $I = 0.1$) and temporal
306 autocorrelation (Figure S6), homogeneity of variance, and normality of residuals. When
307 summarising results, we report the mean \pm standard deviation, and when describing model outputs
308 we report the standardised slope coefficient and 95% confidence intervals. We also report the R^2 for
309 each model. All analyses was conducted in R 4.0.3 (R Development Core Team, 2020).

310 *2.2.3 Projecting cases*

311 To understand how mobility patterns have influenced cases, we projected cases using the baseline
312 and green transmission models under three scenarios: 1) cases under observed mobility patterns;
313 2) cases after a 20% reduction in each day's overall mobility; 3) cases after a 20% increase in each
314 day's park use. We ran the baseline and green transmission models through each of the scenarios
315 for every local authority between March 1st and November 30th 2020. We standardised all authorities
316 so they had the same starting number of cases (10), community cases (10), and lagged case rate
317 (0.58%; the mean case rate across local authorities on March 1st). These cases, community cases,
318 and lagged case rate were updated and iteratively informed by the new model predictions, instead
319 of the observed data. As a result, the projected case rates are solely influenced by the landscape
320 structure and mobility patterns in the local authority. We converted the projected case rates into
321 projected cases, against the starting case value of 10.

322 **3. Results**

323 Across the 299 local authorities, case rates fluctuated substantially through time (Figure 4a).
324 Mobility declined substantially during the first national lockdown in March to May, and in the run up
325 to winter (Figure 4b). During the summer months, mobility and the variance in mobility increased,
326 and in some local authorities these increases were close to 100% (doubling mobility). In contrast,
327 park use increased during the first lockdown and remained high (approximately 25% above
328 baseline) until winter approached in October (Figure 4c). There was less variation in park use trends
329 between local authorities than in the mobility change metric.



330

331 **Figure 4.** a) Temporal patterns in case rates (a), mobility change (b) and park use (c) between March 1st and
332 November 30th 2020, with each line representing a different local authority. The red line represents the Oxford
333 local authority and acts purely as an example. Case rates are defined as the daily percentage change in
334 cases calculated over a seven day moving average. Mobility change is the mean daily percentage change
335 over five mobility types (Park, Grocery and Pharmacy stores, Retail and recreation, Transport, and
336 Workplaces) extracted from Google community mobility reports (Google, 2020). Park use is the relative
337 contribution of park mobility to overall mobility change, derived by extracting the residuals of a linear model
338 with park mobility regressed against overall mobility within each local authority i.e. are people visiting parks
339 more than we would expect on a given date.

340 3.1 Baseline transmission models

341 A reduction in mobility was associated with a decline in case rates, and changes in mobility had a
342 larger impact when there was a higher number of average cases and when the population was

343 more clustered (Table 2; Figure 5c, d). Population density and population clustering had no
 344 significant impact on case rates. Increases in the health index and proportion of the population over
 345 the age of 70 were both associated with significant decreases in case rates (Table 2; Figure 5a, b).
 346 This baseline transmission model had an R^2 of 0.45.

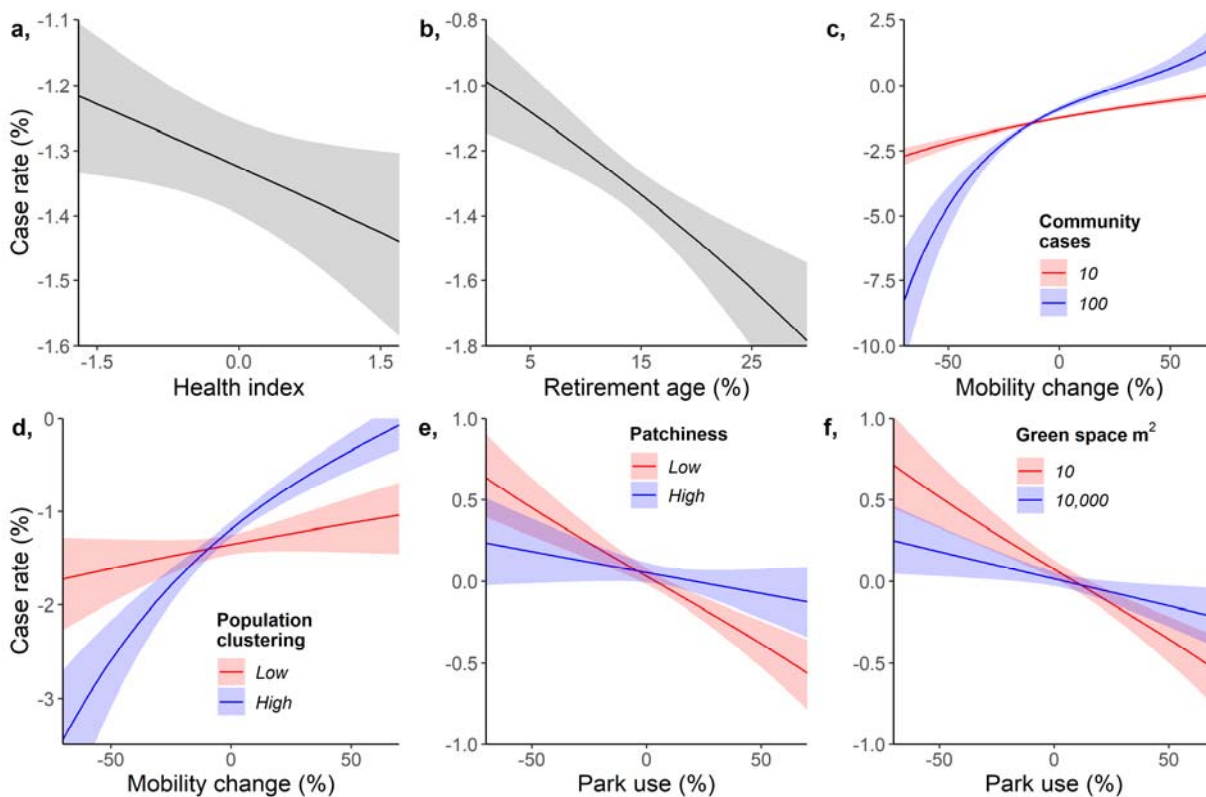
347 **Table 2.** Estimated regression parameters from the baseline and green transmission models with 95
 348 confidence intervals. Values rounded to two significant figures, those with confidence intervals not overlapping
 349 zero (i.e. significant at the $p = 0.05$ threshold) are shown in bold.

	Coefficient [95% confidence intervals]
<i>Baseline transmission model</i>	
Intercept	0.40 [0.37, 0.42]
Lag case rate	1.56 [1.55, 1.58]
Population density	0.020 [-0.0084, 0.048]
Population clustering	0.013 [-0.0041, 0.030]
Mobility	0.16 [0.14, 0.18]
Case average	0.080 [0.052, 0.11]
Baseline health	-0.025 [-0.049, -0.0015]
Percentage over 70	-0.060 [-0.088, -0.033]
Percentage unemployed	0.0059 [-0.020, 0.032]
Mobility:Community cases	0.13 [0.095, 0.15]
Population density:Population clustering	0.0068 [-0.010, 0.024]
Population density:Mobility	0.0029 [-0.012, 0.018]
Population clustering:Mobility	0.029 [0.012, 0.047]
<i>Green transmission model</i>	
Intercept	0.0077 [-0.013, 0.028]
Park use	-0.096 [-0.12, -0.071]
Green space	-0.0068 [-0.028, 0.015]
Patchiness	0.013 [-0.0086, 0.034]
Case average	-0.047 [-0.070, -0.024]
Park use:Green space	0.023 [0.00086, 0.44]
Park use:Patchiness	0.022 [0.00017, 0.043]
Park use:Community cases	0.012 [-0.0087, 0.033]

350

351

352



353

354 **Figure 5.** Marginal effects of important interaction parameters in the baseline transmission and in the green
 355 transmission models. Marginal effects are held at zero for all other parameters as variables were z-
 356 transformed. Panels depict the effect of: a) health, with low values indicating health deprivation; b) the
 357 percentage of the population over 70; c) an interaction between mobility and community cases (the 7-day
 358 average number of cases in the local authority); d) an interaction between mobility and human population
 359 clustering set at 0.2 (Low) and 0.7 (High), where 0 indicates a random distribution of clustering, and 1
 360 indicates a complete separation in clustering; e) an interaction between park use and patchiness (the median
 361 frequency of parks within 1km of each house in a local authority); and f) an interaction between park use and
 362 green space area per local authority capita. Error bars represent the 95 confidence intervals.

363

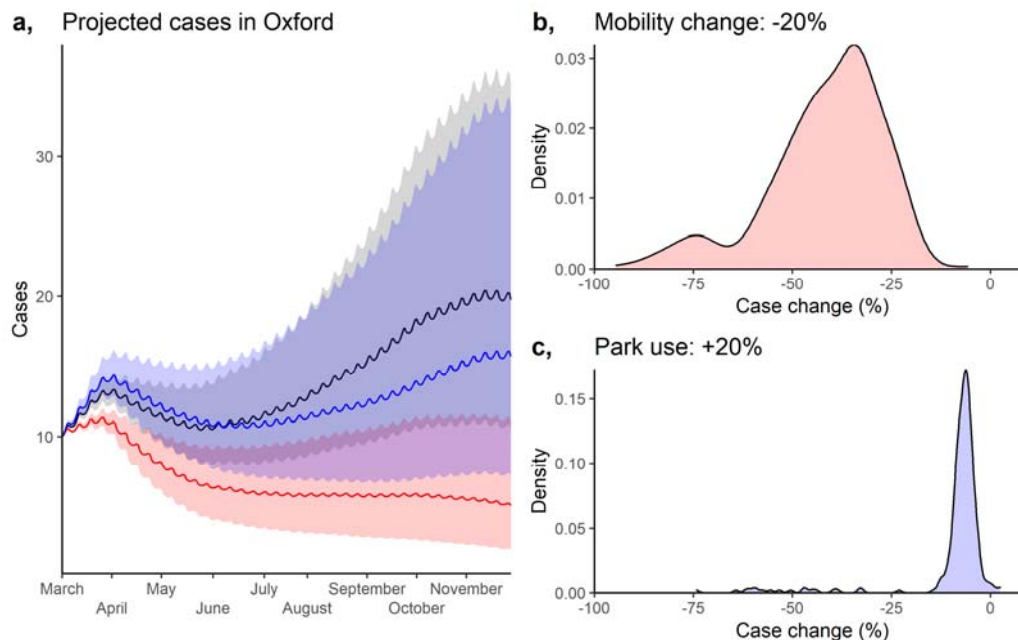
364 3.2 Green transmission models

365 Park use was associated with decreased residual case rates (Table 2; Figure 5e) but the size of the
 366 effect depended on the availability of green space and how patchy it was. When patchiness was
 367 high and when there was a large amount of greenspace, park use had less of an impact on case
 368 rates, though was still associated with a significant reduction in cases. The green transmission
 369 model had a small R^2 of less than 0.01, despite the significant effects.

370

371 3.3 Projected cases

372 Reducing mobility is a far more effective measure of limiting COVID-19 transmission than increasing
373 park use (Figure 6). Across local authorities between March and November 2020, a 20% reduction
374 in mobility is projected to have led to 33% fewer cases on average, and in some cases more than
375 50% fewer cases (Figure 6b). In contrast, a 20% increase in park use rarely exceeds a 10%
376 reduction in cases (Figure 6c). So whilst park use is associated with reducing COVID-19
377 transmission, these benefits would only be relatively small. However, there is spatial variation in
378 these findings, with some areas potentially benefitting more than others from a reduction in mobility
379 or increase in park use (Figure 7).

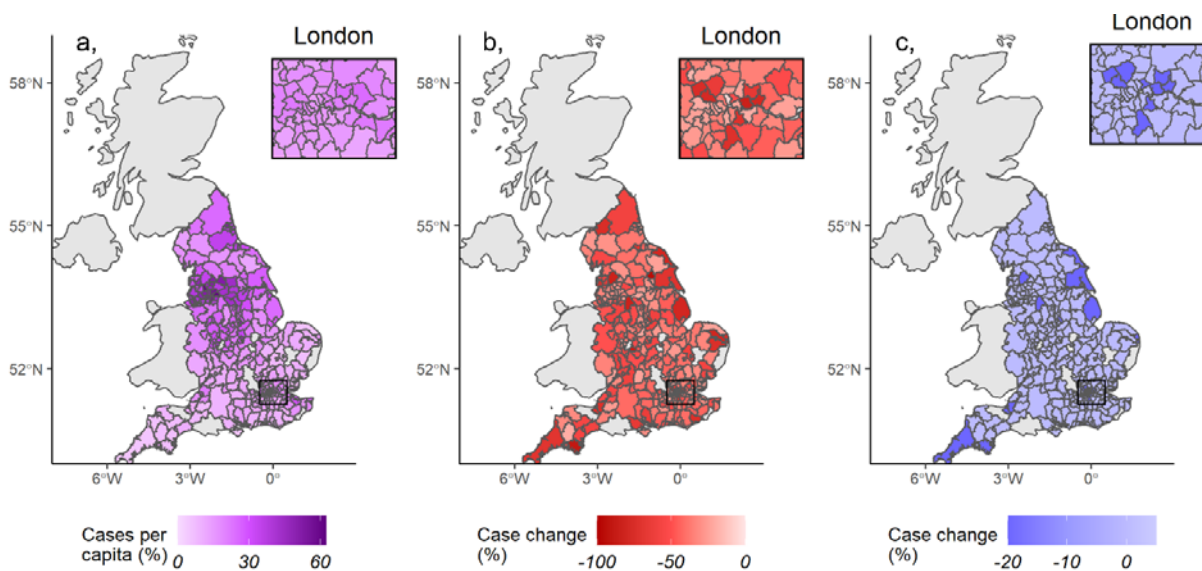


380

381 **Figure 6.** a) Projected daily cases between March 1st and November 30th 2020 within Oxford under three
382 scenarios: 1) observed mobility patterns (black); 2) a further 20% reduction in observed mobility (red); and 3)
383 20% increase in observed park use (blue). In these projections, we set the initial cases (on March 1st) at 10,
384 and with lagged case rate of 0.58% - the mean value across local authorities on February 28th. All other
385 covariates were held at their observed values. Error ribbons represent 95% confidence intervals. Panels b and
386 c represent the distribution of projected change in cases across local authorities under the 20% mobility
387 reduction (b) and 20% park use increase (c) scenarios i.e. how much could cases have been reduced under
388 these scenarios. Case change was derived by dividing the total cases between the March and November
389 periods under each scenario by the cases in the observed mobility scenario (black), multiplying this value by
390 100, and then subtracting by 100.

391

392



393

394 **Figure 7.** Spatial variation in observed cases per capita (a), and projected case changes under a 20%
395 mobility reduction (b) and 20% increase in park use (c). Case change was derived by dividing the total cases
396 between March and November 2020 under each scenario by the cases in the observed mobility projection,
397 multiplying this value by 100, and then subtracting by 100 (see Figure 5).

398

399 4. Discussion

400 In this study, we attempted to quantify the effects of local green space on COVID-19 case rates
401 after accounting for mechanisms known to influence pandemics in our baseline transmission model.
402 We found that high overall mobility was associated with increased case rates, especially when
403 population clustering was high. After accounting for these variables, we found that higher park use,
404 compared to other amenity areas, was associated with a reduction in case rates, especially in local
405 authorities with low green space and with contiguous green space. These results suggest that
406 utilising green spaces rather than carrying out other activities (e.g. visiting shops and workplaces)
407 may reduce the transmission rate of COVID-19, but these benefits are limited compared to reducing
408 mobility more generally.

409 From our baseline transmission model results, case rates were lower in local authorities with
410 healthier populations and older populations (Figure 5a-b). These results are logical, firstly as

411 previous evidence has shown COVID-19 has a greater impact on those with underlying health
412 conditions (Hamer et al., 2020; Jordan et al., 2020) and more severe cases may be more likely to
413 be tested and reported. Secondly, whilst the elderly are more at risk of mortality from COVID-19
414 (Williamson et al., 2020), this fact was widely reported in public health guidance and older people
415 may have reduced contact with other individuals (Canning et al., 2020) Our baseline transmission
416 model also shows that reducing mobility is most valuable when community cases are high and in
417 areas with high population clustering (Figure 5c-d). This is consistent with person-person contact as
418 the major mechanism of transmission and appears to demonstrate the general effectiveness of
419 lockdown measures in reducing case rates, as others have demonstrated previously (Davies et al.,
420 2020; Lau et al., 2020). Mobility had less impact in low clustered areas, which again may be
421 expected, as people are more likely to be able to maintain distance and the potential number of
422 interactions is reduced.

423 Once we had accounted for known drivers of case-rates, we investigated how landscape structure
424 and park use (i.e. mobility in green spaces) affected residual case rates using the green
425 transmission model. Here we found that using parks, relative to other types of mobility, was
426 associated with a reduction in case rates (Figure 5-6). However, reducing overall mobility (i.e.
427 mobility to all amenity areas) led to a far more substantial decline in case rates. For example, a 20%
428 reduction was projected to reduce cases by c.35%, whilst a 20% increase in park use was projected
429 to reduce cases by 5% to 10% (Figure 6). This suggests that the use of parks may have modestly
430 helped in reducing transmission rates in some areas during the pandemic, but reducing overall
431 mobility is substantially more beneficial than maintaining mobility at pre-pandemic levels and
432 spending that mobility in parks.

433 Whilst park use, overall, had a relatively small effect, we did note stronger effects of park use when
434 the context of the local area was considered as using parks was beneficial in authorities with low
435 green space and authorities with contiguous green space (Figure 5e-f and Figure 6). That park use
436 has a minor beneficial effect overall seems to support our hypothesis that recreation in green space
437 and parks may be safer than in other amenity areas. This is probably because it is easier to
438 maintain distance and green spaces have fewer surfaces which could result in transmission if

439 contaminated. However, the limiting impact of this when green space is high and accessible seems
440 to suggest diminishing returns in how park use can impact COVID-19 transmission. This is perhaps
441 not surprising if the main value of parks in this context is as an alternative to other relatively more
442 hazardous amenity areas. Consequently, if there are other safe options outside of public parks then
443 parks will likely have little impact. However, our findings do suggest that the use of public parks in a
444 highly urbanised area may be advantageous, though as noted above the strongest effect was from
445 the reduction of all forms of mobility. Therefore, cautiously, and given that it corresponds with
446 common sense, we suggest that reducing mobility is a successful strategy for reducing case rates
447 but given a need for some non-essential time outside of a home, using green spaces such as local
448 parks may be the next best thing, particularly in highly urbanised areas.

449 A major limitation of the work is the difficulty in comparing across local authorities that vary
450 simultaneously in many different variables likely important to case rates. This makes inference
451 about the importance of their individual effects very difficult and so effect sizes should be interpreted
452 cautiously and with caveat. Another challenge is that pandemics are rare events, consequently, our
453 analysis covers only a snapshot of time for each local authority. During this period, many different
454 factors not included in the analysis (e.g. chance super spreading events) may have explained much
455 of the variation between local authorities. Despite this, the model fits are reasonably high. An
456 additional limitation in our analyses is the absence of complete Google mobility data in some local
457 authorities. We handled these missing values with imputation and attempted to ensure models were
458 robust by comparing imputed models with complete-case models. Encouragingly, our complete-
459 case and imputed results are very similar, which suggests the imputation has not introduced any
460 missing data bias (Johnson et al., 2021) – although both the imputation and complete-case analysis
461 could just be equally wrong. Given this uncertainty, and the further limitations we have identified
462 above, our mobility findings should be interpreted cautiously.

463 Understanding the risks of different amenity areas could be important for longer-term management
464 of COVID-19 and the landscape-dependency of this advice could be important for developing 'local-
465 lockdown' guidance. In particular, access to green spaces has been shown to have benefits for
466 mental and physical well-being (Slater et al., 2020; Soga et al., 2020), and consequently,

467 understanding the relative risks of using these areas is important. Our results show that COVID-19
468 case rates may be reduced with individuals spending time in parks, relative to other amenity areas,
469 especially in urbanised, high-density areas. Although further research is needed, these findings
470 suggest that the use of parks for recreational activity in these contexts could be advisable,
471 demonstrating a possible additional utility of these green spaces in addition to the known benefits to
472 health and wellbeing (de Vries et al., 2003; Mitchell and Popham, 2007; Nutsford et al., 2013) in
473 normal non-pandemic conditions.

474 **Acknowledgments**

475 Thanks to the NERC Covid-19 hackathon for instigating this work. This work was partly funded by
476 the following NERC (Natural Environment Research Council) Centre for Doctoral Training
477 studentships: J71566E, P012345, and L002566.

478 **Data accessibility**

479 Code and data to repeat analysis are presented in
480 https://github.com/GitTFJ/COVID19_parks_landscape

481 **Author contributions**

482 All authors contributed to project design. Analysis was led by TFJ and LCE, but all authors
483 contributed. TFJ and LCE co-wrote the first draft and co-authors contributed to revisions.

484 **References**

- 485 Bahl, P., Doolan, C., de Silva, C., Chughtai, A.A., Bourouiba, L., MacIntyre, C.R., 2020. Airborne or
486 Droplet Precautions for Health Workers Treating Coronavirus Disease 2019? *J. Infect. Dis.*
487 <https://doi.org/10.1093/infdis/jjaa189>
- 488 Beyer, K.M.M., Kaltenbach, A., Szabo, A., Bogar, S., Javier Nieto, F., Malecki, K.M., 2014.
489 Exposure to neighborhood green space and mental health: Evidence from the survey of the
490 health of wisconsin. *Int. J. Environ. Res. Public Health.*
491 <https://doi.org/10.3390/ijerph110303453>

- 492 Canning, D., Karra, M., Dayalu, R., Guo, M., Bloom, D.E., 2020. The association between age,
493 COVID-19 symptoms, and social distancing behavior in the United States. medRxiv.
494 <https://doi.org/10.1101/2020.04.19.20065219>
- 495 Chinazzi, M., Davis, J.T., Ajelli, M., Gioannini, C., Litvinova, M., Merler, S., Pastore y Piontti, A., Mu,
496 K., Rossi, L., Sun, K., Viboud, C., Xiong, X., Yu, H., Elizabeth Halloran, M., Longini, I.M.,
497 Vespignani, A., 2020. The effect of travel restrictions on the spread of the 2019 novel
498 coronavirus (COVID-19) outbreak. *Science* (80-). <https://doi.org/10.1126/science.aba9757>
- 499 Clark, A., Jit, M., Warren-Gash, C., Guthrie, B., Wang, H.H.X., Mercer, S.W., Sanderson, C.,
500 McKee, M., Troeger, C., Ong, K.L., Checchi, F., Perel, P., Joseph, S., Gibbs, H.P., Banerjee,
501 A., Eggo, R.M., Nightingale, E.S., O'Reilly, K., Jombart, T., Edmunds, W.J., Rosello, A., Sun,
502 F.Y., Atkins, K.E., Bosse, N.I., Clifford, S., Russell, T.W., Deol, A.K., Liu, Y., Procter, S.R.,
503 Leclerc, Q.J., Medley, G., Knight, G., Munday, J.D., Kucharski, A.J., Pearson, C.A.B., Klepac,
504 P., Prem, K., Houben, R.M.G.J., Endo, A., Flasche, S., Davies, N.G., Diamond, C., van
505 Zandvoort, K., Funk, S., Auzenbergs, M., Rees, E.M., Tully, D.C., Emery, J.C., Quilty, B.J.,
506 Abbott, S., Villabona-Arenas, C.J., Hué, S., Hellewell, J., Gimma, A., Jarvis, C.I., 2020. Global,
507 regional, and national estimates of the population at increased risk of severe COVID-19 due to
508 underlying health conditions in 2020: a modelling study. *Lancet Glob. Heal.*
509 [https://doi.org/10.1016/S2214-109X\(20\)30264-3](https://doi.org/10.1016/S2214-109X(20)30264-3)
- 510 Cohen-Cline, H., Turkheimer, E., Duncan, G.E., 2015. Access to green space, physical activity and
511 mental health: A twin study. *J. Epidemiol. Community Health*. [https://doi.org/10.1136/jech-](https://doi.org/10.1136/jech-2014-204667)
512 [2014-204667](https://doi.org/10.1136/jech-2014-204667)
- 513 Davies, N.G., Kucharski, A.J., Eggo, R.M., Gimma, A., Edmunds, W.J., Jombart, T., O'Reilly, K.,
514 Endo, A., Hellewell, J., Nightingale, E.S., Quilty, B.J., Jarvis, C.I., Russell, T.W., Klepac, P.,
515 Bosse, N.I., Funk, S., Abbott, S., Medley, G.F., Gibbs, H., Pearson, C.A.B., Flasche, S., Jit, M.,
516 Clifford, S., Prem, K., Diamond, C., Emery, J., Deol, A.K., Procter, S.R., van Zandvoort, K.,
517 Sun, Y.F., Munday, J.D., Rosello, A., Auzenbergs, M., Knight, G., Houben, R.M.G.J., Liu, Y.,
518 2020. Effects of non-pharmaceutical interventions on COVID-19 cases, deaths, and demand

- 519 for hospital services in the UK: a modelling study. *Lancet Public Heal.*
- 520 [https://doi.org/10.1016/S2468-2667\(20\)30133-X](https://doi.org/10.1016/S2468-2667(20)30133-X)
- 521 de Vries, S., Verheij, R.A., Groenewegen, P.P., Spreeuwenberg, P., 2003. Natural environments -
522 Healthy environments? An exploratory analysis of the relationship between greenspace and
523 health. *Environ. Plan. A.* <https://doi.org/10.1068/a35111>
- 524 Ekkel, E.D., de Vries, S., 2017. Nearby green space and human health: Evaluating accessibility
525 metrics. *Landsc. Urban Plan.* <https://doi.org/10.1016/j.landurbplan.2016.06.008>
- 526 Fahrig, L., 2013. Rethinking patch size and isolation effects: The habitat amount hypothesis. *J.*
527 *Biogeogr.* <https://doi.org/10.1111/jbi.12130>
- 528 Freckleton, R.P., 2002. On the misuse of residuals in ecology: Regression of residuals vs. multiple
529 regression. *J. Anim. Ecol.* <https://doi.org/10.1046/j.1365-2656.2002.00618.x>
- 530 Gatto, M., Bertuzzo, E., Mari, L., Miccoli, S., Carraro, L., Casagrandi, R., Rinaldo, A., 2020. Spread
531 and dynamics of the COVID-19 epidemic in Italy: Effects of emergency containment measures.
532 *Proc. Natl. Acad. Sci. U. S. A.* <https://doi.org/10.1073/pnas.2004978117>
- 533 Geng, D. (Christina), Innes, J., Wu, W., Wang, G., 2021. Impacts of COVID-19 pandemic on urban
534 park visitation: a global analysis. *J. For. Res.* 32; 553–567. [https://doi.org/10.1007/s11676-020-](https://doi.org/10.1007/s11676-020-01249-w)
535 [01249-w](https://doi.org/10.1007/s11676-020-01249-w)
- 536 Google, 2020. Google COVID-19 Community Mobility Reports.
537 <https://www.google.com/covid19/mobility/> Accessed <18 May 2020>.
- 538 Hamer, M., Kivimäki, M., Gale, C.R., Batty, G.D., 2020. Lifestyle risk factors, inflammatory
539 mechanisms, and COVID-19 hospitalization: A community-based cohort study of 387,109
540 adults in UK. *Brain. Behav. Immun.* <https://doi.org/10.1016/j.bbi.2020.05.059>
- 541 Johnson, T.F., Isaac, N.J.B., Paviolo, A., González-Suárez, M., 2021. Handling missing values in
542 trait data. *Glob. Ecol. Biogeogr.* <https://doi.org/10.1111/geb.13185>
- 543 Jordan, R.E., Adab, P., Cheng, K.K., 2020. Covid-19: Risk factors for severe disease and death.

- 544 BMJ. <https://doi.org/10.1136/bmj.m1198>
- 545 Kraemer, M.U.G., Golding, N., Bisanzio, D., Bhatt, S., Pigott, D.M., Ray, S.E., Brady, O.J.,
546 Brownstein, J.S., Faria, N.R., Cummings, D.A.T., Pybus, O.G., Smith, D.L., Tatem, A.J., Hay,
547 S.I., Reiner, R.C., 2019. Utilizing general human movement models to predict the spread of
548 emerging infectious diseases in resource poor settings. *Sci. Rep.*
549 <https://doi.org/10.1038/s41598-019-41192-3>
- 550 Kraemer, M.U.G., Yang, C.H., Gutierrez, B., Wu, C.H., Klein, B., Pigott, D.M., du Plessis, L., Faria,
551 N.R., Li, R., Hanage, W.P., Brownstein, J.S., Layan, M., Vespignani, A., Tian, H., Dye, C.,
552 Pybus, O.G., Scarpino, S. V., 2020. The effect of human mobility and control measures on the
553 COVID-19 epidemic in China. *Science* (80-.). <https://doi.org/10.1126/science.abb4218>
- 554 Lau, H., Khosrawipour, V., Kocbach, P., Mikolajczyk, A., Schubert, J., Bania, J., Khosrawipour, T.,
555 2020. The positive impact of lockdown in Wuhan on containing the COVID-19 outbreak in
556 China. *J. Travel Med.* <https://doi.org/10.1093/jtm/taaa037>
- 557 Little, R.J. a, Rubin, D.B., 2002. *Statistical Analysis with Missing Data*, Statistical analysis with
558 missing data Second edition. John Wiley & Sons. <https://doi.org/10.2307/1533221>
- 559 Maas, J., Verheij, R.A., Groenewegen, P.P., De Vries, S., Spreeuwenberg, P., 2006. Green space,
560 urbanity, and health: How strong is the relation? *J. Epidemiol. Community Health.*
561 <https://doi.org/10.1136/jech.2005.043125>
- 562 Mahase, E., 2020. China coronavirus: WHO declares international emergency as death toll exceeds
563 200. *BMJ.* <https://doi.org/10.1136/bmj.m408>
- 564 Mccallum, H., Dobson, A., 2002. Disease , habitat fragmentation and conservation. *Proc. Biol. Sci.*
- 565 Ministry of Housing Communities & Local Government, 2019. English indices of deprivation 2019
566 [WWW Document]. URL [https://www.gov.uk/government/statistics/english-indices-of-](https://www.gov.uk/government/statistics/english-indices-of-deprivation-2019)
567 [deprivation-2019](https://www.gov.uk/government/statistics/english-indices-of-deprivation-2019)
- 568 Mitchell, R., Popham, F., 2007. Greenspace, urbanity and health: Relationships in England. *J.*
569 *Epidemiol. Community Health.* <https://doi.org/10.1136/jech.2006.053553>

- 570 Nutsford, D., Pearson, A.L., Kingham, S., 2013. An ecological study investigating the association
571 between access to urban green space and mental health. *Public Health*.
572 <https://doi.org/10.1016/j.puhe.2013.08.016>
- 573 Office for National Statistics, 2021a. Local authority ageing statistics, based on annual mid-year
574 population estimates [WWW Document]. URL [https://www.ons.gov.uk/datasets/ageing-](https://www.ons.gov.uk/datasets/ageing-population-estimates/editions/time-series/versions/3)
575 [population-estimates/editions/time-series/versions/3](https://www.ons.gov.uk/datasets/ageing-population-estimates/editions/time-series/versions/3)
- 576 Office for National Statistics, 2021b. Population estimates for the UK, England and Wales, Scotland
577 and Northern Ireland, provisional: mid-2019.
- 578 Office for National Statistics, 2021c. Access to gardens and public green space in Great Britain
579 [WWW Document]. URL
580 [https://www.ons.gov.uk/economy/environmentalaccounts/datasets/accesstogardensandpublicg](https://www.ons.gov.uk/economy/environmentalaccounts/datasets/accesstogardensandpublicgreenspaceingreatbritain)
581 [reenspaceingreatbritain](https://www.ons.gov.uk/economy/environmentalaccounts/datasets/accesstogardensandpublicgreenspaceingreatbritain)
- 582 R Development Core Team, 2020. R Development Core Team, R: a language and environment for
583 statistical computing. *R A Lang. Environ. Estat. Comput.*
- 584 Richardson, S., Hirsch, J.S., Narasimhan, M., Crawford, J.M., McGinn, T., Davidson, K.W.,
585 Barnaby, D.P., Becker, L.B., Chelico, J.D., Cohen, S.L., Cookingham, J., Coppa, K.,
586 Diefenbach, M.A., Dominello, A.J., Duer-Hefele, J., Falzon, L., Gitlin, J., Hajizadeh, N., Harvin,
587 T.G., Hirschwerk, D.A., Kim, E.J., Kozel, Z.M., Marrast, L.M., Mogavero, J.N., Osorio, G.A.,
588 Qiu, M., Zanos, T.P., 2020. Presenting Characteristics, Comorbidities, and Outcomes among
589 5700 Patients Hospitalized with COVID-19 in the New York City Area. *JAMA - J. Am. Med.*
590 *Assoc.* <https://doi.org/10.1001/jama.2020.6775>
- 591 Rowland, C.S., Morton, R.D., Carrasco, L., McShane, G., O'Neil, A.W., Wood, C., 2017. Land
592 Cover Map 2015. *NERC Environ. Inf. Data Cent.*
- 593 Seo, S., Choi, S., Kim, K., Kim, S.M., Park, S.M., 2019. Association between urban green space
594 and the risk of cardiovascular disease: A longitudinal study in seven Korean metropolitan
595 areas. *Environ. Int.* <https://doi.org/10.1016/j.envint.2019.01.038>

- 596 Shoari, N., Ezzati, M., Baumgartner, J., Malacarne, D., Fecht, D., 2020. Accessibility and allocation
597 of public parks and gardens in England and Wales: A COVID-19 social distancing perspective.
598 PLoS One. <https://doi.org/10.1371/journal.pone.0241102>
- 599 Slater, S.J., Christiana, R.W., Gustat, J., 2020. Recommendations for keeping parks and green
600 space accessible for mental and physical health during COVID-19 and other pandemics. *Prev.*
601 *Chronic Dis.* <https://doi.org/10.5888/PCD17.200204>
- 602 Soga, M., Evans, M.J., Tsuchiya, K., Fukano, Y., 2020. A room with a green view: the importance of
603 nearby nature for mental health during the COVID-19 pandemic. *Ecol. Appl.*
604 <https://doi.org/10.1002/eap.2248>
- 605 Taylor, L., Hochuli, D.F., 2017. Defining greenspace: Multiple uses across multiple disciplines.
606 *Landsc. Urban Plan.* <https://doi.org/10.1016/j.landurbplan.2016.09.024>
- 607 UK Government, 2020a. The Health Protection (Coronavirus, Restrictions) (England) (Amendment)
608 (No. 4) Regulations 2020, [legislation.gov.uk](https://www.legislation.gov.uk).
- 609 UK Government, 2020b. UK gridded population 2011 based on Census 2011 and Land Cover Map
610 2015.
- 611 UK Government, 2020c. Unemployment by ethnicity.
- 612 UK Government, 2018. Unemployment by ethnicity: Unemployment by local authority [WWW
613 Document]. URL [https://data.gov.uk/dataset/fe6c83aa-62aa-4a8c-94cc-
614 225f47287225/unemployment-by-ethnicity/datafile/eba34752-0512-4cbe-9941-
615 c9e5745fa937/preview](https://data.gov.uk/dataset/fe6c83aa-62aa-4a8c-94cc-225f47287225/unemployment-by-ethnicity/datafile/eba34752-0512-4cbe-9941-c9e5745fa937/preview)
- 616 Van Buuren, S., Groothuis-Oudshoorn, K., 2011. MICE: Multivariate Imputation by Chained
617 Equations in R. *J. Stat. Softw.* 10; 1 – 68. <https://doi.org/10.1177/0962280206074463>
- 618 van den Berg, M., Wendel-Vos, W., van Poppel, M., Kemper, H., van Mechelen, W., Maas, J., 2015.
619 Health benefits of green spaces in the living environment: A systematic review of
620 epidemiological studies. *Urban For. Urban Green.* <https://doi.org/10.1016/j.ufug.2015.07.008>

- 621 Venter, Z.S., Barton, D.N., Gundersen, V., Figari, H., Nowell, M., 2020. Urban nature in a time of
622 crisis: Recreational use of green space increases during the COVID-19 outbreak in Oslo,
623 Norway. *Environ. Res. Lett.* <https://doi.org/10.1088/1748-9326/abb396>
- 624 Williamson, E.J., Walker, A.J., Bhaskaran, K., Bacon, S., Bates, C., Morton, C.E., Curtis, H.J.,
625 Mehrkar, A., Evans, D., Inglesby, P., Cockburn, J., McDonald, H.I., MacKenna, B., Tomlinson,
626 L., Douglas, I.J., Rentsch, C.T., Mathur, R., Wong, A.Y.S., Grieve, R., Harrison, D., Forbes, H.,
627 Schultze, A., Croker, R., Parry, J., Hester, F., Harper, S., Perera, R., Evans, S.J.W., Smeeth,
628 L., Goldacre, B., 2020. Factors associated with COVID-19-related death using OpenSAFELY.
629 *Nature.* <https://doi.org/10.1038/s41586-020-2521-4>
- 630 Wood, S., 2021. *mgcv* 1.8-34.
- 631 Zhang, N., Huang, H., Su, B., Ma, X., Li, Y., 2018. A human behavior integrated hierarchical model
632 of airborne disease transmission in a large city. *Build. Environ.*
633 <https://doi.org/10.1016/j.buildenv.2017.11.011>
- 634
- 635
- 636