

Global RNAseq of ocular cells reveals gene dysregulation in both asymptomatic and with Congenital Zika Syndrome infants exposed prenatally to Zika virus

Authors:

Livia Rosa-Fernandes, PhD¹; Amina Bedrat, PhD²; Maria Luiza B. dos Santos, MD, MsC³; Ana Pinto PhD⁴; Lucena E, MD⁵; Thiago P. Silva, PhD⁶; Rossana C. N. Melo, PhD⁶; Giuseppe Palmisano, PhD¹, Claudete Araújo Cardoso, MD, PhD³ and Raquel Hora Barbosa, PhD^{3*§}

Affiliations:

- 1- GlycoProteomics Laboratory, Department of Parasitology, Institute of Biomedical Sciences, University of Sao Paulo, Sao Paulo, Brazil.
- 2- Molecular and Integrative Physiological Sciences Program, Department of Environmental Health, Harvard School of Public Health, Boston, Massachusetts, U.S.
- 3- Maternal and Child Department, School of Medicine, Universidade Federal Fluminense, Niteroi, Rio de Janeiro, Brazil.
- 4- Biomedical Institute, Universidade Federal Fluminense, Niteroi, Rio de Janeiro, Brazil.
- 5- Division of Clinical Research, Instituto Nacional de Câncer, Rio de Janeiro, Brazil.
- 6- Laboratory of Cellular Biology, Department of Biology, Universidade Federal de Juiz de Fora, MG, Brazil.

*Corresponding Author:

Raquel Hora Barbosa, PhD, rhbarbos@bidmc.harvard.edu

Maternal and Child Department, School of Medicine, Universidade Federal Fluminense, Rua Marques do Paraná, 303, Niteroi, Rio de Janeiro, Brazil - 24033 900, Phone: + 55 21 2629-9255.

[§]Present address: Department of Medicine, Beth Israel Deaconess Medical Center (BIDMC), Harvard Medical School, 3 Blackfan circle, 02115, Boston, MA, USA.

Key Words:

Zika virus, Congenital Zika Syndrome, Transcriptome, Global RNAseq, neurodevelopmental dysregulation, Ocular abnormalities.

Abstract

In 2015, Brazil reported an outbreak identified as Zika virus (ZIKV) infection associated with congenital abnormalities. To date, a total of 86 countries and territories have described evidence of Zika infection and recently the appearance of the African ZIKV lineage in Brazil highlights the risk of a new epidemic. The spectrum of ZIKV infection-induced alterations at both cellular and molecular

levels is not completely elucidated. Here, we present for the first time the gene expression responses associated with prenatal ZIKV infection from ocular cells. We applied a recently developed non-invasive method (impression cytology) which use eye cells as a model for ZIKV studies. The ocular profiling revealed significant differences between exposed and control groups, as well as a different pattern in ocular transcripts from Congenital Zika Syndrome (CZS) compared to ZIKV-exposed but asymptomatic infants. Our data showed pathways related to mismatch repair, cancer, and PI3K/AKT/mTOR signaling and genes probably causative or protective in the modulation of ZIKV infection. Ocular cells revealed the effects of ZIKV infection on primordial neuronal cell genes, evidenced by changes in genes associated with embryonic cells. The changes in gene expression support an association with the gestational period of the infection and provide evidence for the resulting clinical and ophthalmological pathologies. Additionally, the findings of cell death- and cancer-associated deregulated genes raise concerns about the early onset of other potential pathologies including the need for tumor surveillance. Our results thus provide direct evidence that infants exposed prenatally to the Zika virus, not only with CZS but also without clinical signs (asymptomatic) express cellular and molecular changes with potential clinical implications.

Introduction

In 2015, Brazil reported an outbreak identified as Zika virus (ZIKV) infection, transmitted mainly by *Aedes* mosquitoes^{1,2}. The transmission of this disease, associated with Guillain-Barré syndrome and microcephaly, has been registered in different regions of the world. To date, a total of 86 countries and territories have described evidence of Zika infection (transmitted by mosquitoes)¹ and, more recently - in 2019, the appearance of the African ZIKV lineage in Brazil highlight the risk of a new epidemic³.

Congenital Zika Syndrome (CZS) was identified due to the increased incidence of congenital abnormalities associated with ZIKV infection, which include morphological, behavioral,

neurological^{4,5,6,7} and ocular impairments^{8,9,10,11,12,13}. Notably, not only ZIKV antigens have been detected in ocular tissue samples¹⁴, but also ZIKV has the potential to survive for long periods in ocular tissue and it is detectable in ocular fluids (e.g. lacrimal fluid)^{15,16,17}.

Ocular lesions may result from defects of eye development that may have occurred at different stages of embryogenesis^{8,9,10,11,12,13,14}. On the other hand, the eye has been described as a specialized CNS compartment, since the optic nerve and retina extend from the diencephalon during embryonic development, being able to display symptoms of neurodegenerative diseases¹⁸.

ZIKV infection might yield outcomes that will only be manifested later in life¹⁹, requiring long-term monitoring of all infants prenatally exposed to ZIKV^{20, 21}. Considering the need for after birth surveillance of infants with possible ZIKV congenital exposure, we have standardized an impression cytology methodology and study protocol for analysis of molecular alterations resulting from ZIKV infection in ocular tissue²².

Here we present the first study of global gene expression responses of CZS from ocular samples captured by impression cytology. The ocular profiling revealed significant differences between exposed and controls, as well as a different pattern in ocular transcripts from CZS compared to asymptomatic infants. Congenital ZIKV exposure triggered the regulation of pathways related to mismatch repair, cancer, and PI3K/AKT/mTOR signaling and genes probably causative or protective in the modulation of ZIKV exposure. Altogether, our results enlighten the understanding on the molecular effects of ZIKV exposure during human embryonic development, getting attention to the need for surveillance of all exposed children, even when born without clinical signs.

Material and Methods

Ethical statement and clinical aspects

This study was carried out in accordance with the ethical principles taken from the Declaration of Helsinki and written informed consent was obtained from the parents of babies under

Institutional Review Board and Ethics Committee of Universidade Federal Fluminense approved protocols (approved protocols register number - CAAE: 79890517.6.0000.5243). Ocular surface samples were obtained from a total of twelve infants diagnosed according to the CZS diagnostic criteria referred to the Pediatric Service of the Hospital Universitário Antonio Pedro, Universidade Federal Fluminense (HUAP-UFF), Brazil. All children have been followed by periodical clinical examinations including neurological and ophthalmological screening. From eight babies exposed to the Zika virus during pregnancy, four presented clinical characteristics corresponding to CZS while four did not present clinical signs at the time of ocular cell collection (asymptomatic infants). Control samples were obtained from four unaffected infants, with no clinical signs and no exposure to ZIKV during gestation.

Impression cytology and ocular surface cells capture

Ocular surface samples from the infants exposed to ZIKV were obtained through optimized and non-invasive impression cytology method using a hydrophilic nitrocellulose membrane as previously described²². Additionally, cytospin preparations were done to enable concentration of single cells in suspension on a microscope slide and morphological evaluation (qualitative and quantitative) of potential cell changes. All procedures were described in detail in our previous report²².

RNAseq and Data analysis

Cell suspensions (9 μ L/sample) containing a maximum number of 150 single cells/sample (nuclei) were placed in individual 0.1 mL PCR tubes with 2.5 μ L 1 x PBS (excluding calcium and magnesium) and cells were processed through the Single Cell RNAseq Service (SingulOmic/Novogene). Processing included RNA isolation, cDNA synthesis and amplification, library preparation, and sequencing (10 million *paired-end reads per sample*)²². Reads from RNA-seq were subjected to quality trimming using Trim Galore (version 0.5.0) and aligned to human reference

genome (GRCh38.93) using STAR (version 2.6.1a; options: --outSAMattrIHstart 0 --outSAMstrandField intronMotif --outFilterIntronMotifs RemoveNoncanonical --alignIntronMin 20 --alignIntronMax 1000000 --outFilterMultimapNmax 1)²³. Duplicated reads were discovered using Picard tools (version 2.0.1) and removed. Gene annotations (gtf file; version GRCh38.93) were obtained from Ensembl. FPKM values of genes were estimated using cufflinks (version 2.2.1)²⁴. Counts of genes were estimated using Ht-Seq (v0.10.0)²⁵ and Ensembl gene annotation file (gtf file; v. GRCh38.93). Moreover, genes with less than 5 normalized counts in one or more samples are excluded from the analysis. The statistical analyses were performed in R v 3.5.0. We processed the data using DESeq2 v1.14.1²⁶. The reads counts were normalized, the fold change between groups was calculated, and the differentially expressed genes were selected by adjusting $|\text{Log}_2 \text{FC}| > 1$ and False Discovery rate (FDR) corrected p-value (Benjamini–Hochberg) < 0.05 . We then analyzed a set of genes (top 5%-fold change) to find enriched Gene Ontology (GO) terms with respect to the complete set of tested genes (8583). We used the Gorilla web service²⁷ with the running mode “Two unranked lists of genes” and default P-value threshold (1×10^{-3}).

Quantitative Analysis of transcriptomic Data and Statistical Analysis

Data were processed using Perseus software (v1.4.1.3, Max Planck Institute of Biochemistry, Martinsried, Germany)²⁸. Principal component analysis (PCA) was performed as exploratory data analysis approach in all quantified transcripts. One-way analysis of variance (ANOVA) was used for multiple testing while t-tests were performed for the comparison between two groups. For both tests, p-value < 0.05 were considered statistically significant. Regression and correlation analyses were also performed for the obtained results. The correlations between variables were defined by the Pearson (Perseus) coefficients, and p values less than 0.05 were considered significant. Protein-protein interaction networks were constructed using STRING²⁹ software with High confidence parameter (0.700). Pathway and disease enrichment analysis were also carried out ToppFun function of ToppGene³⁰ suite with FDR correction of 1%.

Results

Clinical aspects

Samples were collected from both eyes of infants (eight boys and four girls) with median age of 21 months (Supplemental Table 1). Four infants were ZIKV exposed and presented CZS according to the CZS diagnostic criteria (ZIKV/CZS: four infants with positive PCR for Zika virus in gestation and presence of clinical signs which included ocular abnormalities and microcephaly – ZIKV infection predominantly in the first trimester), four infants were ZIKV exposed (positive PCR for Zika virus during gestation; maternal ZIKV infection occurring in the second and third trimester) but no clinical signs identified at sample collection time (ZIKV asymptomatic infants) and four unaffected and ZIKV unexposed infants (control samples - CTRL with negative PCR and without clinical signs; Figure 1).

Ocular Cell surface abnormalities

The morphology of cells collected from exposed and non-exposed infants was evaluated in parallel studies^{22,31}. Changes associated with cell degeneration and death were clearly detected in cells from ZIKV-exposed patients, predominantly in CZS, compared to controls and included different levels of keratinization, pyknosis, karyolysis, anucleation and cytoplasmic vacuolization (Figure 2). Quantification of these cytoplasmic and nuclear alterations demonstrated a significant higher alteration in infected infants (Figure 2).

RNAseq profiling

Transcriptome analysis showed 8582 transcripts quantified in all samples (> 5 reads in all samples; Figure 3A). Principle Component Analysis of these transcripts in all conditions with a non-supervised distribution showed no apparent difference among the samples.

Ocular cells from exposed infants, ZIKV/CZS and ZIKV, showed 63 differentially expressed genes [p-value<0.001; 27 differentially expressed genes if considering adjusted p-value <0.01], when compared to the unaffected group (CTRL) group. However, the ZIKV exposed groups are heterogeneous within the genes differentially expressed between the two of them. Thus, we proceeded to contrast each of the exposed groups with the unexposed controls (Figure 3C).

A total of 38 genes are differentially expressed in ocular cells from ZIKV/CZS compared to CTRL (Figure 4A and Table 1) while 29 genes are regulated in ZIKV compared to CTRL (Figure 4B and Table 2). Only 4 genes (*SRBD1*, *MUC21*, *ALMS1* and *CRACR2A*; p<0.001) are differentially regulated in ocular cells from both exposed groups when compared to CTRL; Figure 3B).

Comparative transcriptomics

Comparison among ZIKV/CZS, ZIKV and CTRL groups revealed four well-defined hierarchical clusters (Figure 5). The first cluster showed a clear association of genes *ARF3*, *KLHDC4*, *HIVEP2*, *TNFAIP1*, *ADRM1*, *GFOD2*, *TAF13*, *RAPGEFL1*, *TM7SF2*, *LGALSL*, *ANXA9*, *TMUB2*, *PGLYRP4*, *XPC*, *EHD3*, *PROM2*, *RASAL1* and *MUC21* in most cases downregulated in CTRL infants and upregulated in all ZIKV exposed infants (either CZS and ZIKV, without clinical signs). The second cluster showed association of genes *NUP93*, *FXYD5*, *TRIB2*, *PLXDC1*, *HDGFL3*, *SETDB1* and *POLRMT* in most cases downregulated in CTRL and ZIKV/CZS and upregulated in ZIKV exposed infants. The third cluster showed association of genes *MARF1*, *BTN3A3*, *FAM102B*, *OSER1-DT*, *BICRAL* and *PLA2G4A* in most cases downregulated in ZIKV/CZS and upregulated in CTRL and ZIKV exposed infants. The fourth-cluster showed association of genes *GMPS*, *ETFBKMT*, *PODXL*, *RAB34*, *PUS10*, *IL34*, *HDLBP*, *ITGA6*, *ZBTB7C*, *EIF3K*, *DBF4*, *NPHP3*, *STAT4*, *SRP72* and *SRBD1* in most cases downregulated in all ZIKV exposed infants (either CZS and ZIKV, without clinical signs) and upregulated in CTRL infants.

Functional enrichments

We found a significant enrichment of Gene Ontology (GO) annotations among the 63 differentially expressed transcripts detected in the RNA-Seq experiment (Figures 6 and 8). The top three most significantly enriched GO differentially regulated transcripts in ZIKV/CZS compared to CTRL (Supplemental Table 2) are “PI3K-Akt signaling pathway”, “Pathways in cancer”, “Mismatch repair” and “mTOR signaling pathway” (Figure 6). As the most significantly enriched GO from ZIKV compared to CTRL group are “DNA replication”, “Cell cycle” and “Non-homologous end-joining” (Figure 8; Supplemental Table 3).

Discussion

The eye as neuroepithelial model to study Zika virus infection

Human sensory organs and cranial sensory ganglia are functionally diverse but share a common developmental origin from neural progenitor cells. During the different stages of embryogenesis - through a process that requires a rigorous integration between multiple signaling pathways, repressive transcription factors, cell target specification and morphogenesis - the inner ear, olfactory epithelium, lens, and sensory neurons are gradually originated³². Besides, the eye – a specialized CNS compartment - has been proposed as a model for studies in neurodegenerative diseases^{18,22}. We have recently described a novel non-invasive method that enables collecting ocular cells from children²² as alternative neuroepithelial model to study Zika virus infection and here we applied this technique, for the first time, to investigate the extent of gene expression dysregulation in the ocular tissue of zika virus prenatally exposed children with and without CZS.

Differentially expressed genes involved in neurogenesis, eye development, and neurological disorders

Molecular and cellular events leading to abnormal nervous system development in CZS infants are poorly understood, but the host's response to ZIKV insults is likely to be modulated by the combined effects of multiple genes. Several genes emerged here as differentially expressed in both groups of exposed infants (CZS and ZIKV), many of which are involved in neurogenesis and

ocular development (including mRNA expression in embryonic tissues and primordial stem cells). Indeed, the impact of ZIKV infection on neuronal regulation has already been shown experimentally^{33,34,35, 36, 36,37} and is consistent with the hypothesis that changes in central nervous system embryogenesis that predict adverse outcome as observed in CZS are modulated by deregulation in several signaling pathways (Figures 6 and 7; Supplemental Tables 4, 5 and 6). Here we describe several genes and their biological contexts associated to neurodevelopment (gene details³⁸ in Boxes 1A, 1B and 2A) and highlight a likely implication of a deregulation of these molecules in CZS (Figures 6 and 7).

Collectively, the identity and function of these genes support the hypothesis that Zika virus infection in the first trimester of pregnancy affects precursor cells with effects that extend during the fetal developmental period and can still be seen in the differentiated stages of the cells in infants after birth (Figure 9). Ocular surface cells collected around 21 months after birth contain changes in embryonic marker genes and may be a representation of the interaction of precursor neuronal cells with the mechanisms of Zika virus infection during embryogenesis. Surprisingly, however, we also observed gene expression dysregulation of neurological genes in ZIKV groups associated to several neurological syndromes, developmental delay, intellectual disability, autism spectrum disorders, schizophrenia, and/or ocular impairment that we hypothesize might be relevant in these children. As demonstrated by several studies, there has been an advance in knowledge about the pathophysiology of ZIKV infection in the embryonic development of the CNS^{33, 39, 34, 35, 36, 40, 37}. However, the knowledge about which pathways are associated with the pathogenic mechanism remains poorly understood. This directly interferes in the application of a more effective therapeutic approach, considering the serious clinical consequences for ZIKV exposed individuals⁴¹, and evidenced here for prenatally ZIKV exposed - both asymptomatic and CZS patients.

Dysregulation of genes associated to Congenital Zika Syndrome

Comparative transcriptomics into ZIKV exposed infants and controls showed a downregulation of six genes also associated to CZS phenotypes (Figure 5). Here, we hypothesize that haploinsufficiency of these genes may have contributed to the CZS phenotype. Clinical variants of the **OSER1-DT** gene are associated with developmental delay/intellectual disability, autism spectrum disorders and congenital anomalies⁴²; the **BTN3A3** gene is involved in immunity, cell proliferation and development⁴³; the **FAM102B** gene possesses *in vivo* function unknown³⁸ but is highly expressed in retina⁴⁴ and associated to glaucoma⁴⁵; the **PLA2G4A** gene is involved in inflammatory responses and all-trans-retinoic acid signaling in brain and moreover, transcripts are in embryonic tissues, blood brain barrier, extraembryonic mesoderm⁴⁶; the **MARF1** gene required to protect from DNA double-strand breaks³⁸ and the **BICRAL** gene, a component of chromatin remodeling⁴⁷ (See more gene details³⁸ in Box 2A).

Genes related to response to infection mechanisms

We identified some deregulated genes in ZIKV exposed infants (either CZS or asymptomatic) associated to immune response mechanisms. In first cluster, for example, the upregulated **HIVEP2** gene possess enhancer elements of numerous viral promoters (such as those of SV40, CMV, or HIV1) and **ANXA9** gene - which expression is regulated by IL-22 in keratinocytes^{48,49}. On the other hand, genes shown in fourth cluster are downregulated, such as **IL34** gene (related to innate immunity and in inflammatory processes⁵⁰); **EIF3K** gene (overexpressed in T-lymphocyte) and **STAT4** gene (See more gene details³⁸ in Boxes 1 and 2). Several studies showed to the association of these genes with virus infection, such as papilloma virus 16 (HPV16), HIV infection and life cycle, Maraba, Hepatitis C and West Nile virus³⁸.

PI3/AKT/mTOR signaling in CZS

We found upregulation of several members of the PI3/AKT/mTOR signaling pathway (**BRCA1**, **EGF**, **EGFR**, **FGFR2**, **KIT**, **KITLG**, **MLST8**, **MTOR**, **PIK3CA**, **RPTOR**, **STK11**, **TP53**, **TSC1** and **TSC2** genes) in

ocular samples from CZS infants. PI3K-AKT signaling pathway has an important role in brain growth and it is the cause of many brain overgrowth disorders⁵¹. The PI3K / AKT pathway is crucial for normal neural stem cells in the brain, balancing the maintenance of their multipotent, renewing and proliferating rather than differentiating and becoming inactive^{52,53,54}. Subsequent to an injury, neural stem cells enter a repair phase and express high PI3K levels to increase proliferation⁵⁵. A critical protagonist for the CDK1-PDK1-PI3K/Akt kinase signaling pathway has been suggested in the regulation of self-renewal, differentiation, and somatic reprogramming^{55,56}. As observed during mouse embryo development, AKT activity has a role in mitosis and myogenic and neural differentiation and/or survival⁵⁷. The causes of microcephaly by ZIKV are not fully understood but recently, it is reported that ZIKV protein NS4A and NS4B inhibit Akt-mTOR signaling pathways, resulting in upregulation of autophagy, and promoting viral replication⁵⁸. It is been showed that ZIKV infection of human fetal neural stem cells cause inhibition of the Akt-mTOR pathway, leading to defective neurogenesis and aberrant activation of autophagy⁵⁸. ZIKV proteins to improve viral replication by blocking two innate pathways: interferon (IFN) and mTOR signaling (that normally would inhibit viral replication). The NS5 protein promotes degradation of the interferon effector STAT2, which would then promote transcription of interferon pathway genes. NS4A and NS4B inhibit mTOR signaling emanating from receptor tyrosine kinases. These effects of ZIKV proteins also to inhibit neurogenesis, endorsing cell death⁵⁹.

Dysregulation of DNA Repair and cellular death

We found upregulated Mismatch Repair (MMR) pathway (*MLH1*, *MLH3*, *MSH2*, *MSH3*, *MSH6* and *PMS2* genes) in ocular samples from CZS infants. It has been suggesting that DNA damage can cause premature differentiation and apoptosis⁶⁰. For instance, the regulation of Msh2 protein levels in the ESC interferes the decision of engaging on DNA repair pathways or undergoing apoptosis⁶¹. High levels of Msh2 expression - as detected in CZS infants in our pilot study - may lead to apoptotic responses⁶². Here, we propose that genotoxic stress and DNA repair responses influence

neurodegeneration in the CZS, considering the that poorly repaired DNA damage can be a trigger for apoptosis, and the consequent loss of neurons by apoptosis can result in neurodegeneration, and moreover persistent DNA damage can result in defective neurogenesis, such as observed in CZS. To date, no association has been demonstrated between MMR genes and Zika virus infection in patients. However, this relationship has already been shown experimentally³⁹ and others studies on the role of MMR in viral infections. Levels of MSH2 and MLH1 mRNA were dramatically increased in cells after avian leukosis virus infection, suggest that viral infection may promote the increased expression of MSH2 and MLH1 genes⁶¹. Post-replicative MMR factors have been shown to be recruited into Epstein-Barr virus (EBV) replication compartments, repairing errors that arise during viral replication or inhibiting recombination between conflict sequences. EBV DNA polymerase has an intrinsic 3' to 5' exonuclease activity and the fidelity of viral genome replication is believed to be high, therefore the MMR system might increase the integrity of the viral genome rather than to activate cytotoxic responses⁶³. For effective HSV-1 replication in normal human cells, MSH2 and MLH1 are equally required while MLH1 knockdown inhibits early viral gene expression and MSH2 seems to act at a later stage in the viral life cycle⁶⁴. In fact, morphological changes associated with cell degeneration and death were observed in the cells of infants exposed to ZIKV, both in asymptomatic and in CZS, being predominant in this group. These results corroborate our molecular results and highlight the importance of further studies.

Dysregulation in DNA replication, cell cycle and Non-homologous end-joining recombination

We identified downregulation of Minichromosome Maintenance protein complex (MCM) in asymptomatic ZIKV infants. MCM is a DNA helicase essential for genomic DNA replication that consists of six gene products, MCM2–7, which form a heterohexamer⁶⁵. As a critical protein for cell division, MCM is also the target of various checkpoint pathways and deregulation of MCM function has been linked to genomic instability and a variety of carcinomas⁶⁵. In zebrafish experimental model has demonstrated that *mcm5* is down regulated in differentiated cells but is preserved in retinal

stem cells regions. A regular depletion of maternally derived protein leads to an extended S phase, failure to exit cell cycle, apoptosis, and cell number decrease in *mcm5* mutant embryos. However, apoptosis increases only in the retina, tectum, and hindbrain but not in other late-proliferating tissues - around the third day of development - suggesting that different tissues may employ distinct cellular programs in response to MCM5 depletion⁶⁶. We also identified a downregulation of *CDC45* a member of the highly conserved multiprotein complex which interacts with MCM7 and appears involved in mortality/aging, cellular phenotype, and embryo phenotype. The mRNA expression is detected in embryonic tissues and stem cells from neural tube, mesencephalic ventricular zone, telencephalon, diencephalic ventricular zone, metencephalic alar plate and brain, choroid plexus and medulla oblongata and phenotypes associated included cognitive impairment and cognitive decline measurement³⁸. Additionally, we also detected a downregulation of *MRE11A* gene that encodes a nuclear protein involved in homologous recombination, telomere length maintenance, and DNA double-strand break repair. As part of the MRN complex (a complex of three proteins — **Mre11**, **Rad50** and **Nbs1**), it interacts with MCM9 and the interaction recruits the complex to DNA repair sites⁶⁷. A component of the BASC complex (BRCA1-associated genome surveillance complex), at least composed of BRCA1, MSH2, MSH6, MLH1, ATM, BLM, RAD50, MRE11 and NBN⁶⁸, interacts with herpes simplex virus 1 protein UL12⁶⁹, and in E4 adenovirus infection is inactivated and degraded by viral oncoproteins, thereby preventing concatenation of viral genomes in infected cells. The *MRE11A* gene also is associated to increased risk of cancer^{70, 71}.

Relevance for clinical surveillance

In this pilot study we highlight the cellular and molecular changes and the potential clinical implications in infants exposed prenatally to the Zika virus, not only in CZS, but also for those without clinical signs - asymptomatic (Figure 8; supplemental Table 7). Indeed, the results found alert for surveillance after a viral exposure, especially in asymptomatic individuals, considering the potential risk of a new Zika virus epidemic³. We identified deregulated genes and pathways involved

in developmental disorders and cancer risk in CZS infants (Figure 6; Supplemental Table 8). Several parallelisms exist between development and cancer due to the similarities between normal tissue stem cells and cancer stem/progenitor cells⁷². Several developmental disorders are associated with congenital malformations and cancer risk and the risk is higher in children with congenital anomalies and some specific genetic syndromes⁷³. Nevertheless, little is known regarding how defects in these genes and signaling pathways can produce congenital developmental abnormalities as well as alterations underlying the development of neoplastic process. Tumorigenesis associated with developmental syndromes is related to several variables such as pathways, genes, and genetic/epigenetic alterations as well as the origin of these mutations (somatic or germinative). However, despite the small number of samples evaluated in this pilot study, the monitoring and screening for pediatric cancer predisposition syndromes⁷⁴ should not be discarded in CZS infants.

Conclusion

Ocular cells used for the first time as a neuroepithelial model revealed the effect of Zika infection on primordial neuronal cell genes, evidenced by changes in genes associated with embryonic cells. Precisely because this is a pilot study, further studies with a larger sampling should be performed to corroborate these findings. Despite the small number of samples evaluated, the results described here support those previously described in the literature about Zika-host interaction. The changes in the genes validate an association with the gestational period of the occurrence of the infection and testify to the resulting clinical and ophthalmological pathologies. On the other hand, evidence that there is a deregulation in genes related to cell death brings to the fore the concern with the early onset of other associated pathologies. Evidence of deregulated genes associated with cancer raises concerns about the surveillance regarding the appearance of tumors. Here we support the hypothesis that the CNS changes in infants with CZS may be occurring beyond the consequences of the congenital infectious process. Thus, it will be interesting to study whether

regulatory changes of the primordial genes of development during embryogenesis, as detected in this pilot study, might contribute to the neuropathological condition observed in this syndrome.

Data availability

The data for this study have been deposited in the European Nucleotide Archive (ENA) at EMBL-EBI under accession number PRJEB40869 (<https://www.ebi.ac.uk/ena/browser/view/PRJEB40869>). Additional data supporting the findings of this study are available within the article and its Supplemental files or are available from the authors upon request. Due to privacy and consent restrictions, individualized RNAseq data files cannot be uploaded publicly, but might be available to researchers upon request and signature of a Data Use Agreement.

Acknowledgements

We are grateful to Prof. Lemos for helping us with the initial steps in the RNAseq analysis tools and for reviewing of the first versions the manuscript. We thank the Zika Study Group of the Clinical Research Unit from the Universidade Federal Fluminense especially to the patients and their families. We dedicate this work to the Super Special Mom Mrs. Simone Duarte and to our sweet Guilherme (*in memoriam*).

Author contributions:

Contributor Role	Role Definition
Conceptualization	Ideas; formulation or evolution of overarching research goals and aims. RHB
Formal Analysis	Application of statistical, mathematical, computational, or other formal techniques to analyze or synthesize study data. RHB LR-F AB GP
Funding Acquisition	Acquisition of the financial support for the project leading to this publication. RHB
Investigation	Conducting a research and investigation process, specifically performing the experiments, or data/evidence collection. RHB MLBS TPS AP RCNM
Methodology	Development or design of methodology; creation of models RHB EL
Project	Management and coordination responsibility for the research activity planning and execution.

Administration	RHB CC
Resources	Provision of study materials, reagents, materials, patients, laboratory samples, animals, instrumentation, computing resources, or other analysis tools. RHB RCNM CC GP
Supervision	Oversight and leadership responsibility for the research activity planning and execution, including mentorship external to the core team. RHB
Visualization	Preparation, creation and/or presentation of the published work, specifically visualization/data presentation. RHB LR-F RCNM
Writing – Original Draft Preparation	Creation and/or presentation of the published work, specifically writing the initial draft (including substantive translation). RHB
Writing – Review & Editing	Preparation, creation and/or presentation of the published work by those from the original research group, specifically critical review, commentary, or revision – including pre- or post-publication stages. RHB LR-F AB MLBS AP EL TPS RCNM CC GP

Funding /Support:

This pilot study was supported by grants from Fundação de Amparo à Pesquisa do Estado do Rio de Janeiro (FAPERJ, Brazil, Proc. n.º 201.779/2017 - PDS/2017), Conselho Nacional de Desenvolvimento Científico e Tecnológico (CNPq, Brazil -RCNM and GP), Fundação de Amparo à Pesquisa do Estado de Minas Gerais (FAPEMIG, Brazil, CBB-APQ-03647-16 -RCNM) and Fundação de Amparo à Pesquisa do Estado de São Paulo (FAPESP, Brazil, Proc. n.º 2014/06863-3, 2018/18257-1, 2018/15549-1). RH Barbosa was a recipient of a Brazilian FAPERJ senior postdoctoral fellowship.

References

1. Kass DE, Merlino M. Zika Virus. *N Engl J Med*. 2016;375(3):294. <https://www.who.int/news-room/fact-sheets/detail/zika-virus>. Accessed July 18, 2020.
2. Campos GS, Bandeira AC, Sardi SI. Zika virus outbreak, Bahia, Brazil. *Emerg Infect Dis*. 2015;21(10):1885-1886. doi:10.3201/eid2110.150847
3. Kasprzykowski JI, Fukutani KF, Fabio H, et al. A recursive sub-typing screening surveillance system detects the appearance of the ZIKV African lineage in Brazil: Is there a risk of a new epidemic? *Int J Infect Dis*. 2020;96:579-581. doi:10.1016/j.ijid.2020.05.090
4. Mlakar J, Korva M, Tul N, et al. Zika Virus Associated with Microcephaly. *N Engl J Med*. 2016;374(10):951-958. doi:10.1056/NEJMoa1600651
5. Krauer F, Riesen M, Reveiz L, et al. Zika Virus Infection as a Cause of Congenital Brain Abnormalities and Guillain–Barré Syndrome: Systematic Review. *PLoS Med*. 2017;14(1). doi:10.1371/journal.pmed.1002203

6. Driggers RW, Ho C-Y, Korhonen EM, et al. Zika Virus Infection with Prolonged Maternal Viremia and Fetal Brain Abnormalities. *N Engl J Med*. 2016;374(22):2142-2151. doi:10.1056/NEJMoa1601824
7. Oliveira Melo AS, Malinge G, Ximenes R, Szejnfeld PO, Alves Sampaio S, Bispo De Filippis AM. Zika virus intrauterine infection causes fetal brain abnormality and microcephaly: Tip of the iceberg? *Ultrasound Obstet Gynecol*. 2016;47(1):6-7. doi:10.1002/uog.15831
8. Ventura C V., Maia M, Bravo-Filho V, Góis AL, Belfort R. Zika virus in Brazil and macular atrophy in a child with microcephaly. *Lancet*. 2016;387(10015):228. doi:10.1016/S0140-6736(16)00006-4
9. Ventura C V., Maia M, Ventura B V., et al. Ophthalmological findings in infants with microcephaly and presumable intra-uterus Zika virus infection. *Arq Bras Oftalmol*. 2016;79(1):1-3. doi:10.5935/0004-2749.20160002
10. Zin AA, Tsui I, Rossetto J, et al. Screening criteria for ophthalmic manifestations of congenital zika virus infection. *JAMA Pediatr*. 2017;171(9):847-854. doi:10.1001/jamapediatrics.2017.1474
11. De Paula Freitas B, De Oliveira Dias JR, Prazeres J, et al. Ocular findings in infants with microcephaly associated with presumed zika virus congenital infection in Salvador, Brazil. *JAMA Ophthalmol*. 2016;134(5):529-535. doi:10.1001/jamaophthalmol.2016.0267
12. Ventura C V., Ventura LO. Ophthalmologic manifestations associated with Zika Virus infection. *Pediatrics*. 2018;141(Suppl 2):S161-S166. doi:10.1542/peds.2017-2038E
13. Ventura C V., Maia M, Dias N, Ventura LO, Belfort R. Zika: Neurological and ocular findings in infant without microcephaly. *Lancet*. 2016;387(10037):2502. doi:10.1016/S0140-6736(16)30776-0
14. Fernandez MP, Parra Saad E, Ospina Martinez M, et al. Ocular histopathologic features of congenital Zika syndrome. *JAMA Ophthalmol*. 2017;135(11):1163-1169. doi:10.1001/jamaophthalmol.2017.3595
15. Miner JJ, Sene A, Richner JM, et al. Zika Virus Infection in Mice Causes Panuveitis with Shedding of Virus in Tears. *Cell Rep*. 2016;16(12):3208-3218. doi:10.1016/j.celrep.2016.08.079
16. Swaminathan S, Schlager R, Lewis J, Hanson KE, Couturier MR. Fatal Zika Virus Infection with Secondary Nonsexual Transmission. *N Engl J Med*. 2016;375(19):1907-1909. doi:10.1056/NEJMc1610613
17. Tan JLL, Balne PK, Leo YS, Tong L, Ng LFP, Agrawal R. Persistence of Zika virus in conjunctival fluid of convalescence patients. *Sci Rep*. 2017;7(1):1-5. doi:10.1038/s41598-017-09479-5
18. London A, Benhar I, Schwartz M. The retina as a window to the brain - From eye research to CNS disorders. *Nat Rev Neurol*. 2013;9(1):44-53. doi:10.1038/nrneurol.2012.227
19. Bandyopadhyay D, Qureshi A, Ashish K, Hajra A, Chakraborty S. Effect of ZIKA virus on adult eyes. *Eur J Intern Med*. 2018;47:e18-e19. doi:10.1016/j.ejim.2017.06.016
20. Lebov JF, Brown LM, MacDonald PDM, et al. Review: Evidence of Neurological Sequelae in Children With Acquired Zika Virus Infection. *Pediatr Neurol*. 2018;85:16-20. doi:10.1016/j.pediatrneurol.2018.03.001

21. L C, S MP, E A-P, et al. Persistence of Zika Virus After Birth: Clinical, Virological, Neuroimaging, and Neuropathological Documentation in a 5-Month Infant With Congenital Zika Syndrome. *J Neuropathol Exp Neurol*. 2018;77(3). doi:10.1093/JNEN/NLX116
22. Barbosa RH, dos Santos MLB, Silva TP, et al. Impression Cytology Is a Non-invasive and Effective Method for Ocular Cell Retrieval of Zika Infected Babies: Perspectives in OMIC Studies. *Front Mol Neurosci*. 2019;12:279. doi:10.3389/fnmol.2019.00279
23. STAR: ultrafast universal RNA-seq aligner | Bioinformatics | Oxford Academic. <https://academic.oup.com/bioinformatics/article/29/1/15/272537>. Accessed July 4, 2020.
24. Trapnell C, Roberts A, Goff L, et al. Differential gene and transcript expression analysis of RNA-seq experiments with TopHat and Cufflinks. *Nat Protoc*. 2012;7(3):562-578. doi:10.1038/nprot.2012.016
25. Anders S, Huber W. Differential expression analysis for sequence count data. *Genome Biol*. 2010;11(10):R106. doi:10.1186/gb-2010-11-10-r106
26. Love MI, Huber W, Anders S. Moderated estimation of fold change and dispersion for RNA-seq data with DESeq2. *Genome Biol*. 2014;15(12):550. doi:10.1186/s13059-014-0550-8
27. Eden E, Navon R, Steinfeld I, Lipson D, Yakhini Z. GOrilla: A tool for discovery and visualization of enriched GO terms in ranked gene lists. *BMC Bioinformatics*. 2009;10(1):48. doi:10.1186/1471-2105-10-48
28. Perseus. <https://maxquant.net/perseus/>. Accessed July 4, 2020.
29. STRING: functional protein association networks. <https://string-db.org/>. Accessed July 4, 2020.
30. Welcome to ToppGene. <https://toppgene.cchmc.org/>. Accessed July 4, 2020.
31. Rosa-Fernandes L, Hora Barbosa R, Luiza dos Santos MB, et al. ClmP: Cellular Imprinting Proteomics applied to ocular disorders elicited by Congenital Zika virus Syndrome. *bioRxiv*. May 2019:648600. doi:10.1101/648600
32. Lleras-Forero L, Streit A. Development of the sensory nervous system in the vertebrate head: The importance of being on time. *Curr Opin Genet Dev*. 2012;22(4):315-322. doi:10.1016/j.gde.2012.05.003
33. Rosa-Fernandes L, Cugola FR, Russo FB, et al. Zika virus impairs neurogenesis and synaptogenesis pathways in human neural stem cells and neurons. *Front Cell Neurosci*. 2019;13. doi:10.3389/fncel.2019.00064
34. Hughes BW, Addanki KC, Sriskanda AN, McLean E, Bagasra O. Infectivity of Immature Neurons to Zika Virus: A Link to Congenital Zika Syndrome. *EBioMedicine*. 2016;10:65-70. doi:10.1016/j.ebiom.2016.06.026
35. Russo FB, Jungmann P, Beltrão-Braga PCB. Zika infection and the development of neurological defects. *Cell Microbiol*. 2017;19(6). doi:10.1111/cmi.12744
36. Goodfellow FT, Willard KA, Stice SL, Brindley MA, Wu X, Scoville S. Strain-dependent consequences of zika virus infection and differential impact on neural development. *Viruses*. 2018;10(10). doi:10.3390/v10100550
37. Ledur PF, Karmirian K, Pedrosa C da SG, et al. Zika virus infection leads to mitochondrial

- failure, oxidative stress and DNA damage in human iPSC-derived astrocytes. *Sci Rep.* 2020;10(1). doi:10.1038/s41598-020-57914-x
38. GeneCards - Human Genes | Gene Database | Gene Search. <https://www.genecards.org/>. Accessed July 4, 2020.
39. Park T, Kang MG, Baek SH, Lee CH, Park D. Zika virus infection differentially affects genome-wide transcription in neuronal cells and myeloid dendritic cells. *PLoS One.* 2020;15(4). doi:10.1371/journal.pone.0231049
40. Shao Q, Herrlinger S, Yang SL, et al. Zika virus infection disrupts neurovascular development and results in postnatal microcephaly with brain damage. *Dev.* 2016;143(22):4127-4136. doi:10.1242/dev.143768
41. Gratton R, Tricarico PM, Agrelli A, et al. In vitro zika virus infection of human neural progenitor cells: Meta-analysis of RNA-seq assays. *Microorganisms.* 2020;8(2). doi:10.3390/microorganisms8020270
42. Miller DT, Adam MP, Aradhya S, et al. Consensus Statement: Chromosomal Microarray Is a First-Tier Clinical Diagnostic Test for Individuals with Developmental Disabilities or Congenital Anomalies. *Am J Hum Genet.* 2010;86(5):749-764. doi:10.1016/j.ajhg.2010.04.006
43. Smith IA, Knezevic BR, Ammann JU, et al. BTN1A1, the Mammary Gland Butyrophilin, and BTN2A2 Are Both Inhibitors of T Cell Activation. *J Immunol.* 2010;184(7):3514-3525. doi:10.4049/jimmunol.0900416
44. harmonizome: a collection of processed datasets gathered to serve and mine knowledge about genes and proteins | Database | Oxford Academic. <https://academic.oup.com/database/article/doi/10.1093/database/baw100/2630482>. Accessed July 4, 2020.
45. Genetics of glaucoma | Human Molecular Genetics | Oxford Academic. <https://academic.oup.com/hmg/article/26/R1/R21/3827806>. Accessed July 4, 2020.
46. PLA2G4A gene - Genetics Home Reference - NIH. <https://ghr.nlm.nih.gov/gene/PLA2G4A>. Accessed July 4, 2020.
47. Sokpor G, Xie Y, Rosenbusch J, Tuoc T. Chromatin remodeling BAF (SWI/SNF) complexes in neural development and disorders. *Front Mol Neurosci.* 2017;10:243. doi:10.3389/fnmol.2017.00243
48. Wolk K, Witte E, Wallace E, et al. IL-22 regulates the expression of genes responsible for antimicrobial defense, cellular differentiation, and mobility in keratinocytes: A potential role in psoriasis. *Eur J Immunol.* 2006;36(5):1309-1323. doi:10.1002/eji.200535503
49. Wolk K, Witte E, Wallace E, et al. IL-22 regulates the expression of genes responsible for antimicrobial defense, cellular differentiation, and mobility in keratinocytes: A potential role in psoriasis. *Eur J Immunol.* 2006;36(5):1309-1323. doi:10.1002/eji.200535503
50. Ge Y, Huang M, Yao YM. Immunomodulation of interleukin-34 and its potential significance as a disease biomarker and therapeutic target. *Int J Biol Sci.* 2019;15(9):1835-1845. doi:10.7150/ijbs.35070
51. Hevner RF. Brain overgrowth in disorders of RTK-PI3K-AKT signaling: A mosaic of malformations. *Semin Perinatol.* 2015;39(1):36-43. doi:10.1053/j.semperi.2014.10.006

52. Wang L, Zhou K, Fu Z, et al. Brain Development and Akt Signaling: the Crossroads of Signaling Pathway and Neurodevelopmental Diseases. *J Mol Neurosci*. 2017;61(3):379-384. doi:10.1007/s12031-016-0872-y
53. Lee DY. Roles of mTOR Signaling in Brain Development. *Exp Neurobiol*. 2015;24(3):177-185. doi:10.5607/en.2015.24.3.177
54. Rafalski VA, Brunet A. Energy metabolism in adult neural stem cell fate. *Prog Neurobiol*. 2011;93(2):182-203. doi:10.1016/j.pneurobio.2010.10.007
55. Ojeda L, Gao J, Hooten KG, et al. Critical Role of PI3K/Akt/GSK3 β in Motoneuron Specification from Human Neural Stem Cells in Response to FGF2 and EGF. Sham MH, ed. *PLoS One*. 2011;6(8):e23414. doi:10.1371/journal.pone.0023414
56. Wang XQ, Lo CM, Chen L, Ngan ESW, Xu A, Poon RYC. CDK1-PDK1-PI3K/Akt signaling pathway regulates embryonic and induced pluripotency. *Cell Death Differ*. 2017;24(1):38-48. doi:10.1038/cdd.2016.84
57. Marques L, Thorsteinsdóttir S. Dynamics of Akt activation during mouse embryo development: Distinct subcellular patterns distinguish proliferating versus differentiating cells. *Differentiation*. 2013;86(1-2):48-56. doi:10.1016/j.diff.2013.07.001
58. Liang Q, Luo Z, Zeng J, et al. Zika Virus NS4A and NS4B Proteins Deregulate Akt-mTOR Signaling in Human Fetal Neural Stem Cells to Inhibit Neurogenesis and Induce Autophagy. *Cell Stem Cell*. 2016;19(5):663-671. doi:10.1016/j.stem.2016.07.019
59. Li H, Saucedo-Cuevas L, Shresta S, Gleeson JG. The Neurobiology of Zika Virus. *Neuron*. 2016;92(5):949-958. doi:10.1016/j.neuron.2016.11.031
60. Schroering AG, Edelbrock MA, Richards TJ, Williams KJ. The cell cycle and DNA mismatch repair. *Exp Cell Res*. 2007;313(2):292-304. doi:10.1016/j.yexcr.2006.10.018
61. Tichy ED, Stambrook PJ. DNA repair in murine embryonic stem cells and differentiated cells. *Exp Cell Res*. 2008;314(9):1929-1936. doi:10.1016/j.yexcr.2008.02.007
62. Zhang H, Richards B, Wilson T, et al. *Apoptosis Induced by Overexpression of HMSH2 or HMLH1 1*. Vol 59.; 1999.
63. Daikoku T, Kudoh A, Sugaya Y, et al. Postreplicative mismatch repair factors are recruited to Epstein-Barr virus replication compartments. *J Biol Chem*. 2006;281(16):11422-11430. doi:10.1074/jbc.M510314200
64. Mohni KN, Mastrocola AS, Bai P, Weller SK, Heinen CD. DNA Mismatch Repair Proteins Are Required for Efficient Herpes Simplex Virus 1 Replication. *J Virol*. 2011;85(23):12241-12253. doi:10.1128/jvi.05487-11
65. Lei M. The MCM Complex: Its Role in DNA Replication and Implications for Cancer Therapy. *Curr Cancer Drug Targets*. 2005;5(5):365-380. doi:10.2174/1568009054629654
66. Ryu S, Holzschuh J, Erhardt S, Ettl A-K, Driever W. *Depletion of Minichromosome Maintenance Protein 5 in the Zebrafish Retina Causes Cell-Cycle Defect and Apoptosis*. Vol 102.; 2005. www.pnas.org/cgi/doi/10.1073/pnas.0506187102. Accessed July 4, 2020.
67. Lee KY, Im JS, Shibata E, et al. MCM8-9 complex promotes resection of double-strand break ends by MRE11-RAD50-NBS1 complex. *Nat Commun*. 2015;6(1):1-12.

doi:10.1038/ncomms8744

68. Wang Y, Cortez D, Yazdi P, Neff N, Elledge SJ, Qin J. BASC, a super complex of BRCA1-associated proteins involved in the recognition and repair of aberrant DNA structures. *Genes Dev.* 2000;14(8):927-939. doi:10.1101/gad.14.8.927
69. Balasubramanian N, Bai P, Buchek G, Korza G, Weller SK. Physical Interaction between the Herpes Simplex Virus Type 1 Exonuclease, UL12, and the DNA Double-Strand Break-Sensing MRN Complex. *J Virol.* 2010;84(24):12504-12514. doi:10.1128/jvi.01506-10
70. (PDF) Role of MRE11 in Cell Proliferation, Tumor Invasion, and DNA Repair in Breast Cancer. https://www.researchgate.net/publication/230723928_Role_of_MRE11_in_Cell_Proliferation_Tumor_Invasion_and_DNA_Repair_in_Breast_Cancer. Accessed July 4, 2020.
71. Damiola F, Pertesi M, Oliver J, et al. Rare key functional domain missense substitutions in MRE11A, RAD50, and NBN contribute to breast cancer susceptibility: Results from a Breast Cancer Family Registry case-control mutation-screening study. *Breast Cancer Res.* 2014;16(3). doi:10.1186/bcr3669
72. Bellacosa A. Developmental disease and cancer: Biological and clinical overlaps. *Am J Med Genet Part A.* 2013;161(11):2788-2796. doi:10.1002/ajmg.a.36267
73. Polymalformative genetic syndrome with increased risk of developing cancer (Concept ID: CN200541) - MedGen - NCBI. <https://www.ncbi.nlm.nih.gov/medgen/797542>. Accessed July 4, 2020.
74. Schiffman JD, Geller JI, Mundt E, Means A, Means L, Means V. Update on pediatric cancer predisposition syndromes. In: *Pediatric Blood and Cancer*. Vol 60. *Pediatr Blood Cancer*; 2013:1247-1252. doi:10.1002/pbc.24555

Legends

Figures.

Figure 1. Graphical abstract. A. Schematic figure representing the different groups studied - Exposed (CZS and ZIKV) and not exposed (control) prenatally to the Zika virus. **B.** Cell collection procedure and experimental design.

Figure 2. ZIKV infection triggers nuclear and cytoplasmic alterations in human conjunctival cell types. (A, B) Representative cells from uninfected group show normal morphology. **(C-I)** Nuclear and cytoplasmic alterations observed in cells collected from ZIKV (infected with no clinical signs) or ZIKV/CZV (diagnosed congenital Zika syndrome) children. Morphological changes were characterized by pyknosis **(C, E, H)**, keratinization **(C, D, E)**, anucleation **(D, G)**, karyolysis **(F)**, vacuolization **(C, H)**

and cell fragmentation (**H**). Quantitative analyses (**I, J**) show increased number of conjunctival cells with morphological changes. Cells were collected by impression cytology, cytocentrifuged and stained with Diff-Quik or toluidine blue. For each group, 100 cells were analyzed in 2 different slides and scored for morphological changes. Data represent mean \pm SEM. * $P < 0.001$.

Figure 3. Ocular surface cells gene expression analyses. **A.** Descriptive analysis table of transcripts quantified and regulated. **B.** Venn diagram of DRG ($p < 0.001$) according exposed group. **C.** Differentially expressed gene per exposed group by VENNY analysis.

Figure 4. Ocular transcripts differentially expressed comparative analysis **A.** CZS sample compared to CTRL samples. **B.** ZIKV without clinical signs sample compared to CTRL samples. Volcano plot showed transcripts up-regulated (yellow) and downregulated (blue).

Figure 5. Heatmap representation of significant transcripts clusters ($p < 0.001$) in ZIKV/CZS, ZIKV without clinical signs and unaffected samples. **A.** Changes in expression levels are displayed from blue (downregulated) to yellow (upregulated). **B.** Expression levels between groups represented by yellow line. **C.** Highlighted are the differential gene expression between the ZIKV groups exposed. Heat map were generated, and hierarchical clustering was performed using Perseus based on log₂ fold-change data. Scale bar = Z score.

Figure 6. Deregulated genes in ZIKV/CZS babies. **A.** The thickness of the lines connecting the circles indicates the number of interactions between genes included in each Gene Ontology (GO) sub-category represented by each circle. **B.** Top 10 enriched GO interaction network according *STRING/KEGG* analysis. **C.** Top 10 associated disorders according *Toppgene* analysis.

Figure 7. Congenital Zika Syndrome correlation gene expression / phenotype according *Toppgene* analysis. A. Top 10 embryogenesis stages related. Top 10 neurological process associated. C. Top 10 ocular phenotype associated.

Figure 8. Asymptomatic ZIKV correlation gene expression / phenotype analysis. A. Deregulated genes in ZIKV babies. The thickness of the lines connecting the circles indicates the number of interactions between genes included in each Gene Ontology (GO) sub-category represented by each circle. **B.** Top 10 enriched GO interaction network according *STRING/KEGG* analysis. **C.** Top 10 associated disorders according *Toppgene* analysis.

Figure 9. Schematic figure representing ZIKV prenatal exposure related to embryonic stages and developmental process in this study.

Boxes.

Box 1. 1A. Upregulated genes description. **1B.** Downregulated genes description.

Box 2. 2A. CZS associated genes. **2B.** Asymptomatic ZIKV associated genes.

Tables.

Table 1. Descriptive table of expression differentiated of transcripts into ZIKV/CZS and CTRL babies.

Table 2. Descriptive table of expression differentiated of transcripts into asymptomatic ZIKV and CTRL babies.

Supplemental Table 1. Clinical data.

Supplemental Table 2. Deregulated genes in ZIKV/CZS babies, enriched GO interaction network according *STRING/KEGG* analysis.

Supplemental Table 3. Deregulated genes in Asymptomatic ZIKV babies, enriched GO interaction network according *STRING/KEGG* analysis.

Supplemental Table 4. Correlation gene expression / Congenital Zika Syndrome phenotype according embryogenesis stages related. Results from *Toppgene* analysis.

Supplemental Table 5. Correlation gene expression / Congenital Zika Syndrome phenotype according neurological process associated. Results from *Toppgene* analysis.

Supplemental Table 6. Correlation gene expression / Congenital Zika Syndrome phenotype according ocular phenotype associated. Results from *Toppgene* analysis.

Supplemental Table 7. Correlation gene expression / Asymptomatic ZIKV phenotype according associated disorders. Results from *Toppgene* analysis.

Supplemental Table 8. Correlation gene expression / Congenital Zika Syndrome phenotype according associated disorders. Results from *Toppgene* analysis.

Figure 1.

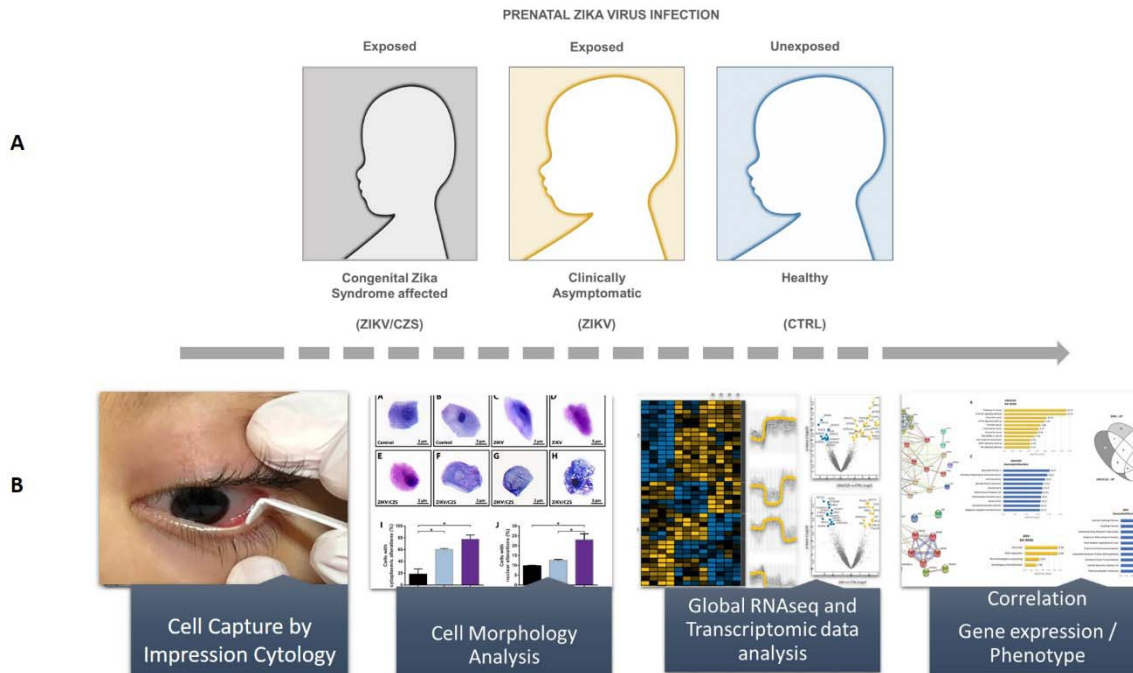


Figure 2.

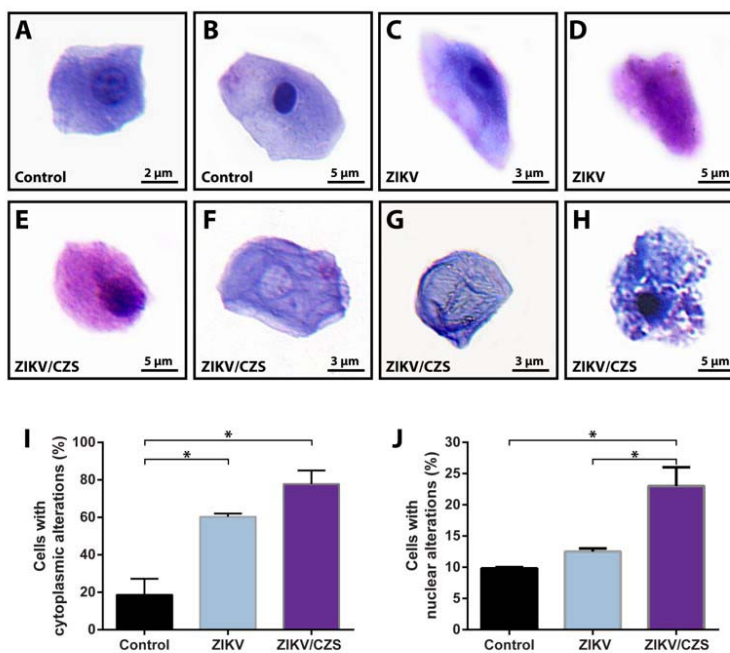


Figure 3.

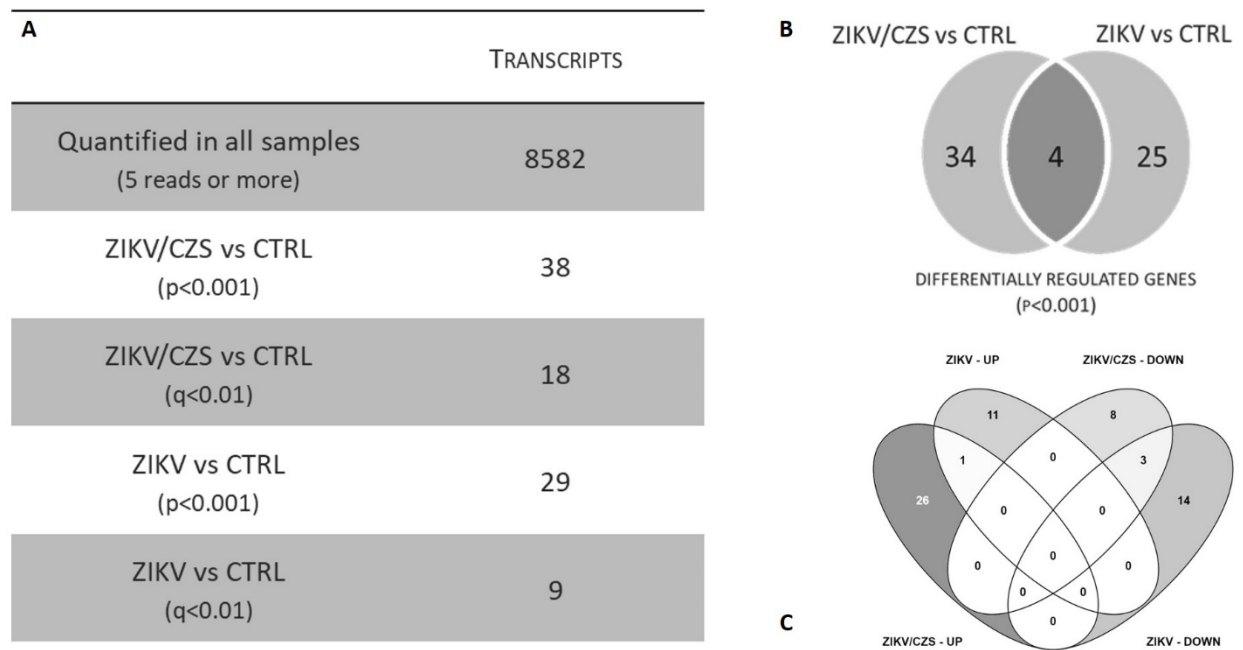


Figure 4.

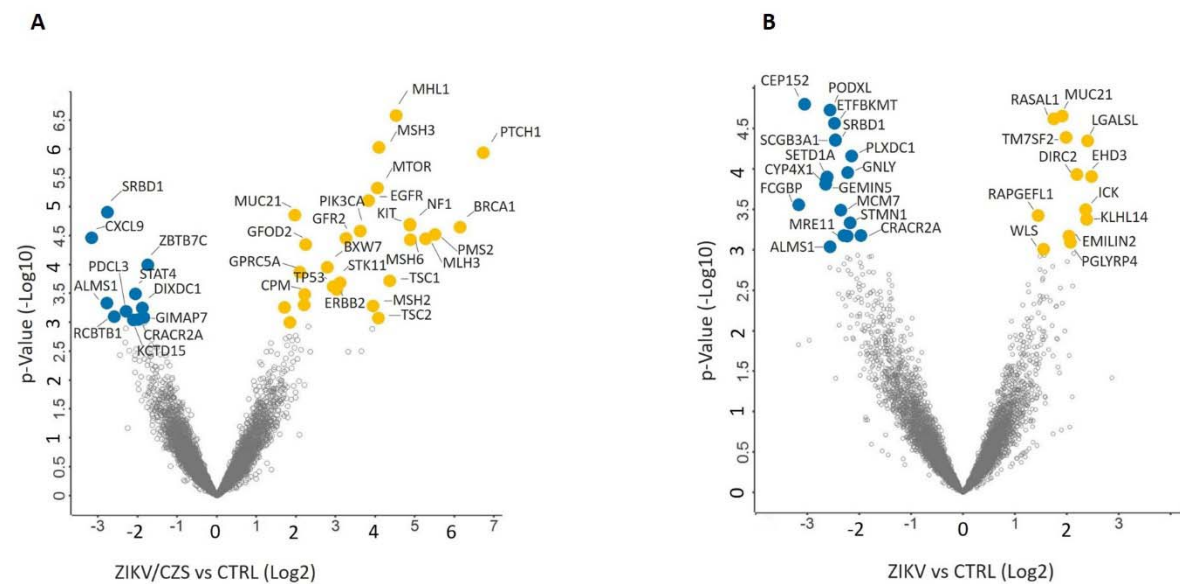


Figure 5.

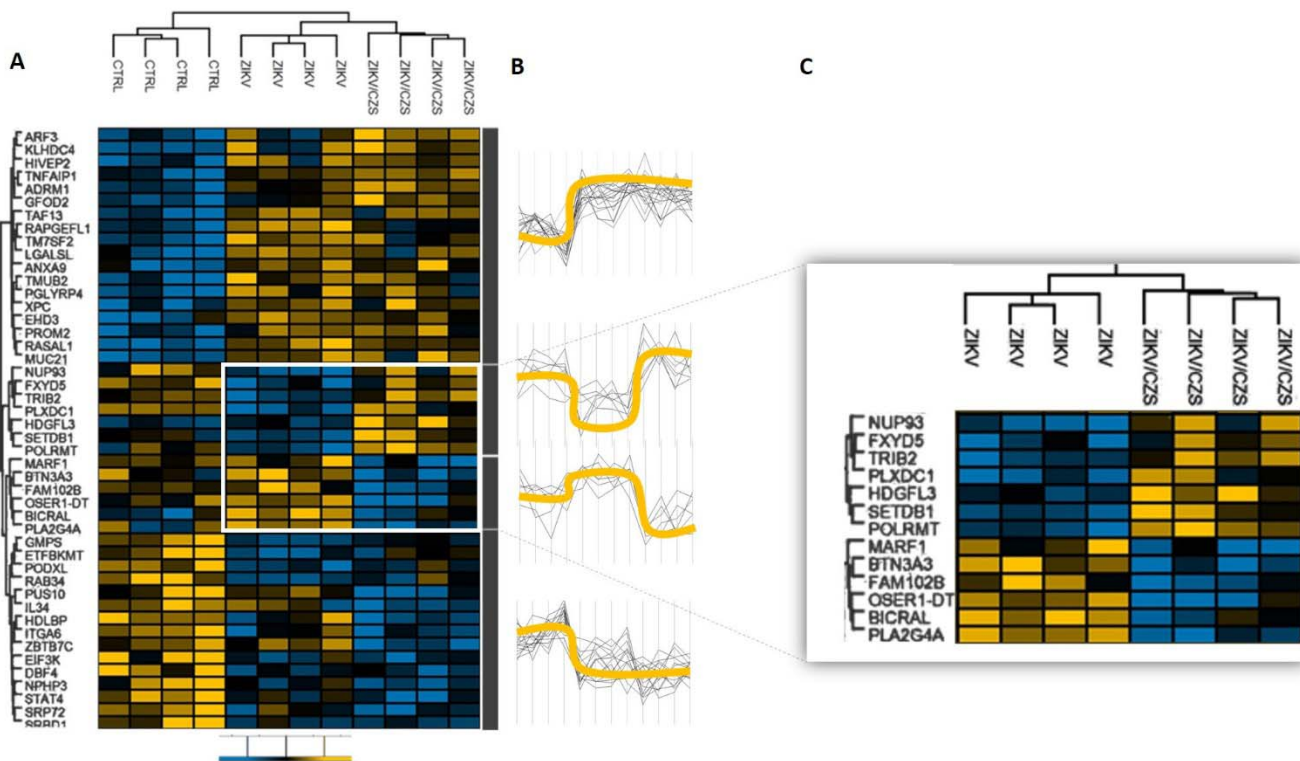


Figure 6.

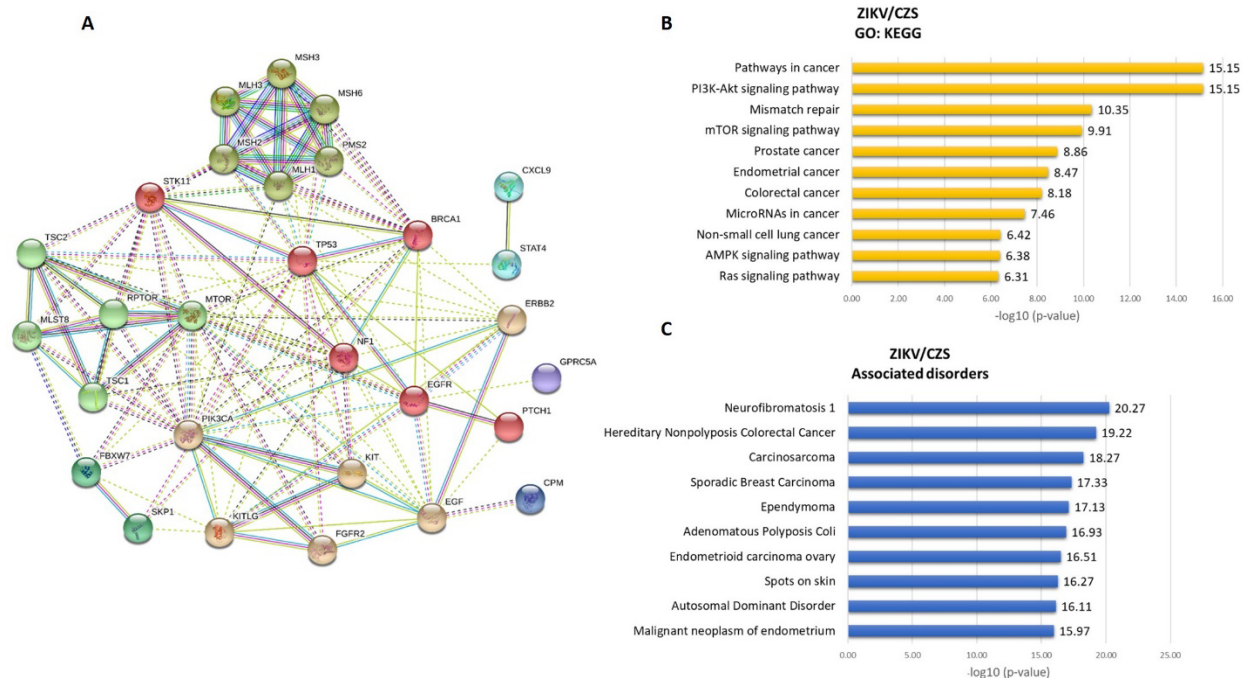


Figure 7.

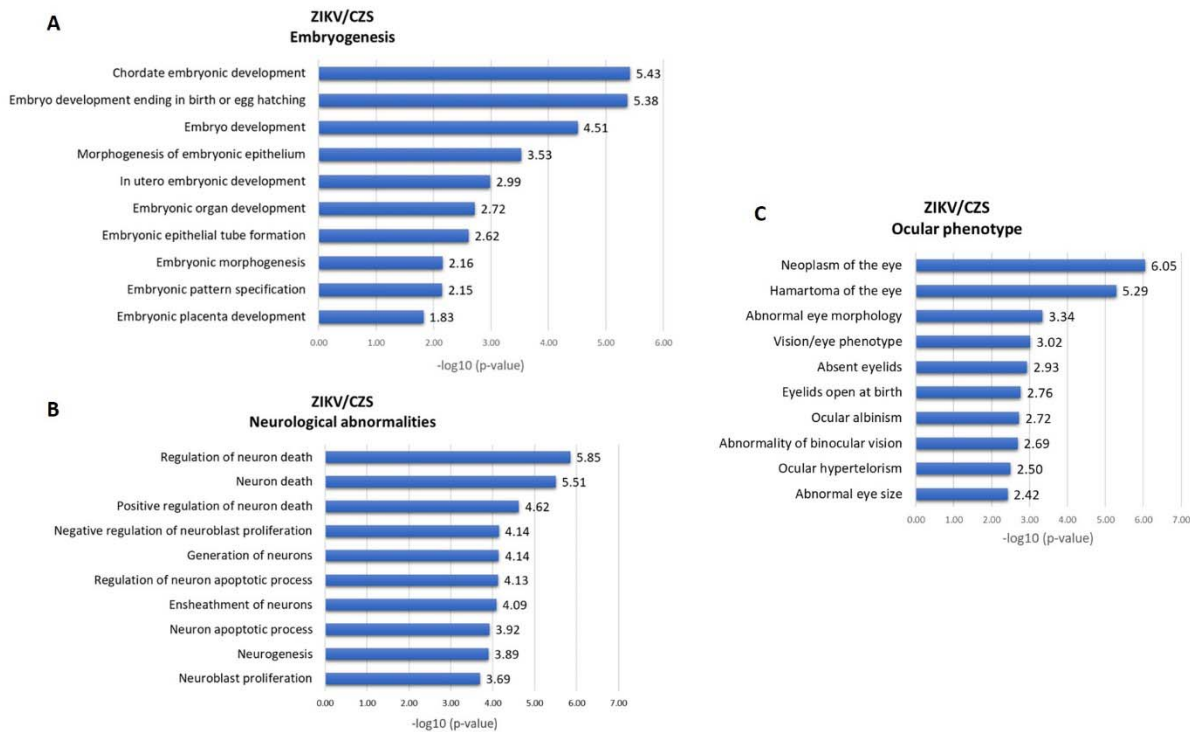


Figure 8.

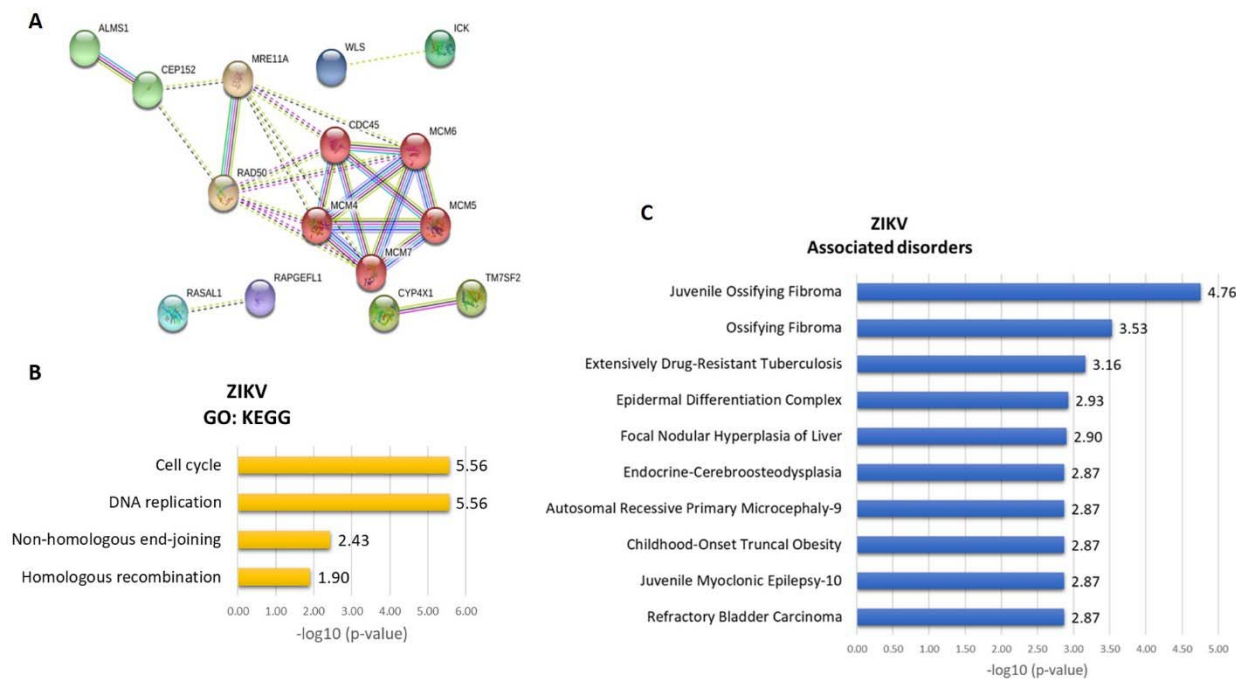
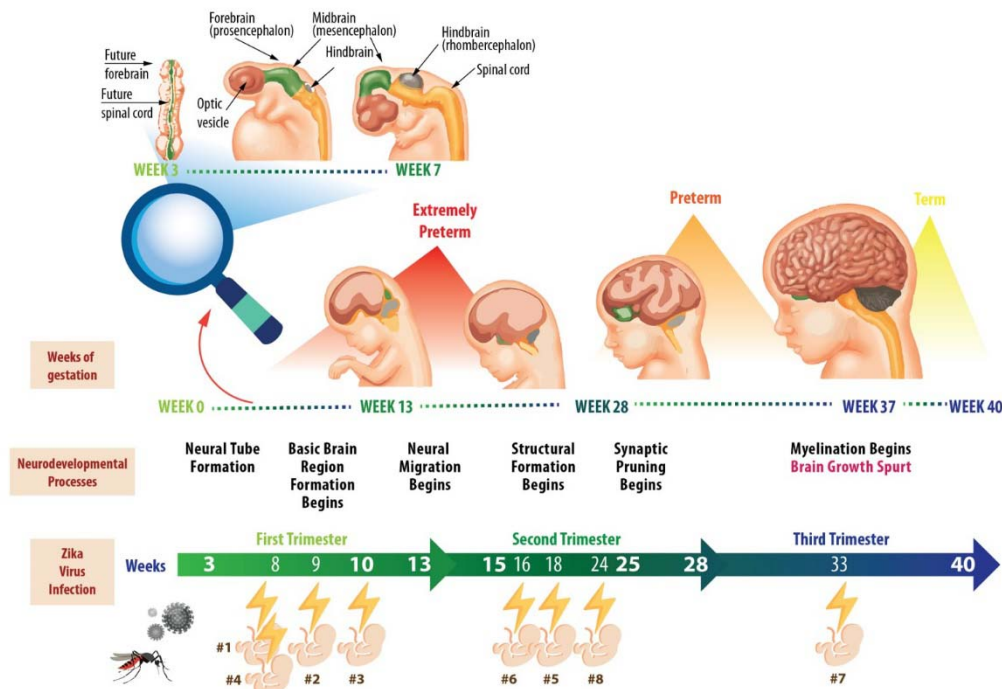


Figure 9.



UPREGULATED GENES

Gene	Brief description
ARF3	The ADP-Ribosylation Factor 3 is a member of the human ARF gene family genes associated with vesicle trafficking that may modulate vesicle budding and uncoating within the Golgi apparatus. It is strongly up-regulated in mantle zone during brain development. Diseases associated with ARF3 include Cholera and Distal Hereditary Motor Neuropathy and changes related with nerve terminal function has been associated to Schizophrenia. Moreover, ARF3 is related to aberrant development of neuronal precursors in epilepsy-associated gangliogliomas.
KLHDC4	The Kelch Domain Containing 4 protein is implicated in diverse cellular functions, including cell migration, cytoskeletal arrangement, protein degradation and gene expression and deregulation has been reported to be associated with multiple human diseases, including cancer, skeletal muscle development and neurological disorders. Overexpressed in frontal cortex, is associated with Huntington Disease-Like 2 and developmental delay. Has been suggest that KLHDC4 promotes Nasopharyngeal carcinoma oncogenesis by suppressing cellular apoptosis and may serve as a prognosis biomarker and a potential therapeutic target and upregulation of KLHDC4 is associated with a poor prognosis.
HIVEP2	The transcription factor HIVEP2 is a protein that in humans is encoded by the HIVEP2 gene also known as Major Histocompatibility Complex-Binding Protein 2. These proteins bind specific DNA sequences, including the kappa-B motif in the promoters and enhancer regions of several genes and viruses, including human immunodeficiency virus (HIV). Moreover, has been associated to intellectual disability and with Angelman-like syndrome and hyperphagia.
TNFAIP1	The Tumor necrosis factor-induced protein 1 (Tnfaip1), also known as B12, has been previously identified as a tumor necrosis factor- α (TNF- α)-inducible protein in umbilical vein endothelial cells and is involved in the cytokinesis signaling pathway, DNA synthesis, innate immunity, cell apoptosis, Alzheimer's disease (AD) and type 2 diabetic nephropathy. <i>TNFAIP1</i> interacting in the development of cortical neurons and their neurofunctions are likely to be critical to human brain development and disease. In an Alzheimer's Disease (AD) model, Tnfaip1 is an apoptotic protein that was robustly induced in the transgenic <i>C. elegans</i> brains and moreover estrogen is a regulator of Tnfaip1 expression in the mouse hippocampus AD model. Additionally, TNFAIP1 contributes to induced neurotoxicity by attenuating Akt/ CREB signaling pathway, and Bcl-2 expression and inhibited the transcriptional activities of nuclear factor kappa B (NF- κ B).
ADRM1	This gene is increased levels of the Adhesion-Regulating Molecule 1 protein are associated with increased cell adhesion and are component of the 26S proteasome, a multiprotein complex involved in the ATP-dependent degradation of ubiquitinated proteins. Proteases play crucial roles in nervous system homeostasis and in neurodegenerative diseases. The ubiquitin proteasome pathway is important to all steps and processes of the nervous system, including cell fate specification, differentiation, migration, networking, and maturation, and is critical in maintaining neuronal homeostasis during ageing. Like postmitotic cells, neurons cannot disperse toxic or poorly folded proteins through cell division, but they must continually get rid of cellular components whose accumulation can be damaging, exemplified by neurodegenerative disorders such as Alzheimer's, Parkinson's and other diseases, where pathological hallmarks are the accumulation and aggregation of proteins with genotoxic properties. Protein metabolism and Epstein-Barr virus infection are also ADRM1 related pathways and moreover, deregulation of this gene has been implicated in carcinogenesis, probably an oncogene – is associated to ovarian cancer. Overexpression of this gene was the most highly correlated with amplification and was significantly upregulated with respect to stage, recurrence, and metastasis. Its overexpression correlated significantly with shorter time to recurrence and overall survival). Overexpression of this gene implicated in ependymomas a central nervous system tumor that originate from the spinal canal and walls of the ventricular system. Intracranial ependymomas predominantly occur in children, most developing in the posterior fossa. Little is known about the molecular abnormalities that underlie ependymoma pathogenesis, but they constitute 3–9% of all neuroepithelial malignancies.
GFOD2	The Glucose-Fructose Oxidoreductase Domain Containing 2 - possess <i>oxidoreductase activity</i> and is overexpressed in placenta, plasma, and peripheral blood mononuclear cells. Associated to

UPREGULATED GENES

	schizophrenia.
TAF13	This gene encodes a subunit of transcription factor IID (TFIID) transcription initiation complex. Associated to cortical neurogenesis is also associated to psychotic disorders, microcephaly and autosomal-recessive intellectual disability.
RAPGEFL1	This gene encoding Rap Guanine Nucleotide Exchange factor (GEF)-like 1 and functionally, act in processes such as G-protein coupled receptor protein signaling pathway, nervous system development and small GTPase mediated signal transduction. Ras proteins, key regulators of growth, differentiation, and malignant transformation, recently have been implicated in synaptic function and region-specific learning and memory functions in the brain. Rap proteins, members of the Ras small G protein superfamily, can inhibit Ras signaling through the Ras/Raf-1/mitogen-activated protein (MAP) kinase pathway or, through B-Raf, can activate MAP kinase. Rap and Ras proteins both can be activated through guanine nucleotide exchange factors (GEFs). RAPGEFL1 is enriched highly in the basal ganglia and is expressed in the nervous system. <i>Rapgef1</i> is a crucial regulator of the multi-to-bipolar transition <i>in vivo</i> in the developing mouse cortex at different time points during neuronal development. Inactivation results in defects in neuronal migration, axon formation and cortical lamination and is required in cortical neurons for both the specification of an axon and the initiation of radial migration by establishing a critical process.
TM7SF2	This gene is involved in cholesterol biosynthesis and controls an anti-inflammatory loop thereby confirming the existence of cross talk between metabolic pathways and inflammatory response and is related with NF- κ B activation and TNF α up-regulation. Cholesterol homeostasis is critical for normal growth and development and in addition to be a major membrane lipid, has multiple biological functions include being a precursor molecule for the synthesis of steroid hormones, neuroactive steroids, oxysterols, and bile acids. Cholesterol is also essential for the proper maturation and signaling of hedgehog proteins, and thus is critical for embryonic development. The human fetal tissues are dependent on endogenous synthesis. Due to the blood-brain barrier, brain tissue cannot utilize dietary or peripherally produced cholesterol. Generally, inborn errors of cholesterol synthesis lead to both a deficiency of cholesterol and increased levels of potentially bioactive or toxic precursor sterols. Several malformation syndromes have been shown to be due to inborn errors of cholesterol synthesis such as Smith-Lemli-Opitz syndrome, desmosterolosis, lathosterolosis, HEM dysplasia, X-linked dominant chondrodysplasia punctata, Congenital Hemidysplasia with Ichthyosiform erythroderma and Limb Defects Syndrome, sterol-C-4 methylxidase-like deficiency, and Antley-Bixler syndrome.
LGALS1	<i>The Galectin-Like protein</i> - is also called <i>GRP</i> or <i>HSPC159</i> gene. Galectins are a family of lectins that bind h-galactosides by means of a carbohydrate recognition domain. Galectin-related proteins are closely related in sequence to the galectin family but have not yet been shown to have ability to specifically bind galactoside sugars. The high degree of HSPC159 sequence conservation suggests the encoding proteins with multiple aspects involved in critical interactions and specific ligands. Although the protein also was named HSPC159 based on its discovery in Human Hematopoietic Stem Cell Precursors, it seems to be expressed in a wide range of tissues and developmental stages. Has been suggests that placenta-specific galectin-10 relatives (such <i>LGALS1</i> product) as evolved to help maintain the special and critical immune balance at the maternal – fetal interface.
ANXA9	Annexins are a family of calcium-dependent phospholipid-binding proteins. Members of the annexin family play a role in the regulation of actin dynamics. The actin cytoskeleton can be rapidly disintegrated and restructured to enable diverse cellular activities such as motility and endocytosis. Annexin A9 may play a role in suppression of apoptosis and as a therapeutic target for the treatment of breast cancer. Variants are associated with developmental delay and changes in Anxa9 expression in the rat brain (hippocampus) are associated with posttraumatic stress disorder.
TMUB2	The Transmembrane and Ubiquitin-Like Domain-Containing Protein 2 - has a function that is not currently known but is related to TP53 protein expression. Expression of <i>TMUB2</i> increases with

UPREGULATED GENES

	age in skin, adipose tissue, blood and brain and is related to cancer development and progression.
<i>PGLYRP4</i>	The Peptidoglycan Recognition Protein 4 is associated with peptidoglycan binding and N-acetylmuramoyl-L-alanine amidase activity and is part of innate immune system. Variants in this gene are associated with neurocognitive disorders and significantly associated with Parkinson's disease risk.
<i>XPC</i>	The Xeroderma Pigmentosum Group C protein - is a crucial factor that recognizes DNA damage and starts up the Nucleotide Excision Repair (NER) in mammalian cells. Previous studies have identified that XPC gene is associated with various types of cancer.
<i>EHD3</i>	The C-terminal Eps15 homology (EHD) domain-containing protein 3 is a protein from tubular and vesicular membrane structures and participates in endocytic recycling, although all its functions are unknown and is overexpressed in brain. A regulator of vesicular trafficking is silenced in gliomas and functions as a tumor suppressor by controlling cell cycle arrest and apoptosis. Associated to cognitive function of patients with major depressive disorder.
<i>PROM2</i>	Prominins are pentaspan transmembrane proteins that bind cholesterol directly and are involved in regulation of plasma membrane lipid organization. The Prominin 2 expression also inhibited CDC42-dependent fluid-phase endocytosis via decreased CDC42 activation. The <i>PROM2</i> is expressed in nervous system. Variants in this gene is associated with developmental delay.
<i>RASAL1</i>	The RAS Protein Activator Like 1 - is a GTPase activator activity and phospholipid binding, acting as a suppressor of RAS function, the protein enhances the weak intrinsic GTPase activity of RAS proteins resulting in the inactive GDP-bound form of RAS, thereby allowing control of cellular proliferation and differentiation. This protein is strongly and selectively expressed in endocrine tissues and broad expression in brain. Clinical variants in this gene is associated to genetic basis of developmental delay, intellectual disability and autism spectrum disorders and congenital defects. Also is associated to With Colorectal Tumor Progression.
<i>MUC21</i>	The human epiglycanin has a structure characteristic of transmembrane-type mucins - epithelial defense molecules that play an essential role in forming protective mucous barriers on epithelial surfaces - and clinically used as carcinoma markers and targets of cancer immunotherapy. Altered expression and glycosylation of mucins were also observed under infectious and other disease conditions. Their unique molecular functions in the biology of the epithelial tissue largely remain to be elucidated. Associated with developmental delay. Candidate genes in host genomic susceptibility to Respiratory Syncytial Virus Disease. This gene also associated with recurrent Major Depressive Disorder.

DOWNREGULATED GENES

Gene	Brief description
HDLBP	The high-density lipoprotein binding protein gene is also downregulated in others neurological disorders, such as Holoprosencephaly and Brachydactyly-Mental Retardation syndrome and have been associated with developmental delay and ocular abnormalities.
BICRAL	The gene is proper functioning of the BAF complexes plays critical roles in neural development, including the establishment and maintenance of neural fates and functionality, play pivotal roles in regulating embryonic development and lineage specific cell identity, however, the mechanistic role in regulating neural differentiation is unknown. In addition, association studies have showed that alterations in BAF complex subunits are linked to neurodevelopmental disorders such as Coffin-Siris syndrome, Nicolaides-Baraitser syndrome (an intellectual disability syndrome), Kleefstra's syndrome spectrum, Hirschsprung's disease, autism spectrum disorder, and schizophrenia.
IL34	The Interleukin-34 is a cytokine that plays an important role in innate immunity and in inflammatory processes - promotes the proliferation, survival and differentiation of monocytes and macrophages. IL-34 is produced by keratinocytes in the epidermis and by neurons in the brain and act in the development of Langerhans cells during embryogenesis inducing proliferation and neuroprotective properties of microglia. However, the functions of IL-34 in the CNS are still elucidative ³⁰ . IL-34 possess a function protected blood-brain barrier integrity by restored expression levels of tight junction proteins, which were downregulated by pro-inflammatory cytokines and may give us a clue for new therapeutic strategies in neuroinflammatory and neurodegenerative diseases such as multiple sclerosis and Alzheimer's disease.
ITGA6	Linkage disequilibrium near the ITGA6 gene has been associated to the abnormal brain development (structure, connectivity, and function) seen among some preterm infants ³² and linked to autism spectrum disorder, intellectual disability, and schizophrenia ³² . In mice, integrin $\alpha 6$ (<i>Itga6</i>) was also expressed at a higher level at the blood-brain barrier highlighting the contribution to the immunological surveillance of the brain and the response to inflammation ³³ .
NPHP3	This gene plays a role in the determination of left/right symmetry AND control of non-canonical Wnt signaling and photoreceptor structure and function, and possibly for decussating neuron integrity in the cerebellum.
RAB34	This is a member <i>RAS</i> oncogene family, acts also as a positive regulator of Sonic Hedgehog signaling and participate of interorganellar regulation of lysosome positioning by the golgi apparatus through interaction with Rab-interacting lysosomal protein ³⁵ . RAB34 was a progression- and prognosis-associated biomarker in gliomas ³⁶ .
FAM102B	This gene possesses <i>in vivo</i> function yet unknown, may play a role in estrogen action and is highly expressed in retina and the loci is associated to glaucoma.
PODXL	The Podocalyxin-like is a known sialomucin, expressed largely in the brain ⁴⁰ and involved in the regulation of both adhesion and cell morphology and cancer progression. Affects EZR-dependent signaling events, leading to increased activities of the MAPK and PI3K pathways. Integrate in the epithelial tube formation and expression of podocalyxin enhances the adherence, migration and intercellular communication of cells ⁴¹ . Associated to Atypical juvenile parkinsonism - a complex form of young-onset Parkinson disease - that manifests with pyramidal signs, eye movement abnormalities, psychiatric manifestations (depression, anxiety, drug-induced psychosis, and impulse control disorders), intellectual disability, and other neurological symptoms (such as ataxia and epilepsy) along with classical parkinsonian symptoms ⁴² . This gene is expressed in cerebral cortex, ectoderm differentiation, embryonic and induced pluripotent stem cell differentiation pathways and lineage-specific markers.
PUS10	This gene is expressed in cerebellum, is required for the progression of the apoptotic signal through intrinsic mitochondrial cell death and is associated to the 2p15p16.1 microdeletion

DOWNREGULATED GENES

	<p>syndrome (phenotype consisting of intellectual disability, microcephaly, hypotonia, delayed growth, common craniofacial features and digital anomalies). In addition, possess a risk locus for Crohn's disease and celiac disease and intellectual disability. The ZBTB7C gene product is a critical component of a transcriptional repressor complex. Zbtb7c is a key molecule that recruits an NCoR/Hdac3 complex to inhibit phosphorylation of c-Jun., and thereby repress several Matrix metalloproteinases (MMPs) gene expression. MMPs are zinc-containing endopeptidases that play roles in cell proliferation, migration, differentiation, angiogenesis, and apoptosis. The expression of MMP gene is tightly regulated and shows cell- and tissue-specific expression patterns⁴⁶. This gene is expressed in brain (medulla oblongata) and integrative mouse and human studies implicate ZBTB7C as susceptibility gene to ischemic injury.</p>
EIF3K	<p>Component of the eukaryotic translation initiation factor 3 (eIF-3) complex, which is required for several steps in the initiation of protein synthesis. Activation of the mRNA upon binding of the cap-binding complex and eIFs, and subsequent binding to 43S and viral mRNA translation. The eIF-3 complex specifically targets and initiates translation of a subset of mRNAs involved in cell proliferation, including cell cycling, differentiation and apoptosis, and uses different modes of RNA stem-loop binding to exert either translational activation or repression. Overexpressed in T-lymphocyte). This gene is expressed in the cerebral cortex, mitogenic stimulation leads to binding and activation of a complex composed of MTOR and RPTOR.</p>
STAT4	<p>Involved in IL12 signal transduction, JAK-STAT cascade, cytokine-mediated signaling pathway and interleukin-12-mediated signaling pathway, overexpressed in peripheral blood mononuclear cells, CD8 T-cells, lymph node and NK-cells. This gene is associated with increased susceptibility for some immune-mediated diseases. Mice deficient in STAT4 are resistant to the induction of experimental autoimmune encephalomyelitis with minimal inflammatory infiltrates in the central nervous system. In addition, Stat4 isoforms differentially regulate inflammation and demyelination in experimental allergic encephalomyelitis. Experimental allergic encephalomyelitis is a T cell-mediated autoimmune disease model of multiple sclerosis - an inflammatory demyelinating disease of the central nervous system.</p>
SRBD1	<p>This gene is expressed in cerebellum and lateral ventricle, this gene is associated to susceptibility for glaucoma risk. Has been hypothesized that <i>SRBD1</i>'s binding properties may promote the development of glaucoma through their proposed influence on protein synthesis, growth, and apoptosis in retinal ganglion cells. In addition, this gene is also associated to high-risk for autism spectrum disorders.</p>
SRP72	<p>The stress-response protein is associated to primary and metastatic tumors of the brain. Mutations in this gene has been associated to myelodysplastic syndromes and acute myeloid leukemia.</p>

CONGENITAL ZIKA SYNDROME ASSOCIATED GENES

Gene	Brief description
MARF1	Encodes a putative peroxisomal protein required to protect from DNA double-strand breaks, regulation of gene expression, negative regulation of phosphatase activity and cell differentiation.
BTN3A3	Butyrophilin is a group of major histocompatibility complex (MHC)-associated [PubMed 20208008]). Plays a role in T-cell responses in the adaptive immune response, involved in cell proliferation and development, Immune system process, T cell mediated immunity, regulation of immune response, and T cell receptor signaling pathway. This gene is overexpressed in peripheral blood mononuclear cells, CD4 Tcells, CD8 Tcells, frontal cortex and spleen.
FAM102B	See details in Box 1
OSER1-DT	The Oxidative Stress-Responsive 1 (Divergent Transcript) possess clinical variants associated developmental delay/intellectual disability, autism spectrum disorders or congenital anomalies.
BICRAL	See details in Box 1
PLA2G4A	Encodes a member of the cytosolic phospholipase A2 group IV family. The enzyme catalyzes the hydrolysis of membrane phospholipids to release arachidonic acid which is subsequently metabolized into eicosanoids. Eicosanoids, including prostaglandins and leukotrienes, are lipid-based cellular hormones that regulate hemodynamics, inflammatory responses, and other intracellular pathways. Involved in G Protein-coupled Receptors Signaling, MAPK-Erk Pathway, P38 MAPK signaling pathway, signaling via JAK/STAT and MAPK cascades, Immune response CCR3 signaling in eosinophils, VEGF - VEGF R2 signaling pathways, all-trans-retinoic acid signaling in brain, and cAMP pathway. Transcripts in embryonic tissues and stem cells in cardiovascular system, blood brain barrier; gastrointestinal tract respiratory system, extraembryonic mesoderm and brain.

ASYMPTOMATIC ZIKV ASSOCIATED GENES

Gene	Brief description
<i>NUP93</i>	NUP93 (that encodes a nucleoporin protein target of caspase cysteine proteases that play a central role in programmed cell death by apoptosis. Regulates podocyte migration and proliferation through SMAD4 signaling; antiviral mechanism by IFN-stimulated genes and RNA transport).
<i>FXYD5</i>	The FXYD5 gene encode a glycoprotein that functions in the up-regulation of chemokine production, and it is involved in the reduction of cell adhesion via its ability to down-regulate E-cadherin which results in reduced cell adhesion. It also promotes metastasis and has been linked to a variety of cancers.
<i>TRIB2</i>	The TRIB2 gene encodes one of three members of the Tribbles family that interact and modulate the activity of signal transduction pathways in several physiological and pathological processes. This Tribbles member induces apoptosis of cells mainly of the hematopoietic origin. It has been identified as a protein up-regulated by inflammatory stimuli in myeloid (THP-1) cells, and as an oncogene that inactivates the transcription factor C/EBPalpha (CCAAT/enhancer-binding protein alpha) and causes acute myelogenous leukemia. Interacts with MAPK kinases and regulates activation of MAP kinases. Involved in DNA Damage, NF-kappaB Signaling, and Wnt / Hedgehog / Notch. This transcript is normally expressed in brain (nervous system: cerebellum, medulla oblongata; neural tube: metencephalic alar plate, and metencephalic basal plate.
<i>PLXDC1</i>	The PLXDC1 gene plays a critical role in endothelial cell capillary morphogenesis, angiogenesis and spinal cord development. Involved in downregulation of NF-kappaB pathway. Normally expressed in Hematopoietic System, Nervous system, Reproductive system, Hepatobiliary and Cardiovascular system. This gene is expressed in T helper cells, common dendritic cell precursors, T-Cytotoxic cells, thymocytes, endothelial cells, blood brain barrier, cerebellum and overexpressed in vitreous humor and retina.
<i>HDGFL3</i>	The HDGFL3 gene enhances DNA synthesis and may play a role in cell proliferation, negative regulation of microtubule depolymerization, regulation of signaling receptor activity, neuron projection development, and microtubule polymerization.
<i>SETDB1</i>	The SETDB1 gene encodes a histone methyltransferase which regulates histone methylation, gene silencing, and transcriptional repression. Involved in Histone Modifications, noncanonical Wnt signaling pathway, chromatin modifying enzymes, chromatin organization, PKMTs methylate histone lysines, lysine degradation, signaling pathways regulating pluripotency of stem cells, chromatin regulation / acetylation, and histone code. Has been identified as a target for treatment in Huntington Disease, given that gene silencing and transcription dysfunction likely play a role in the disease pathogenesis ⁸⁴ . Also required to maintain a transcriptionally repressive state of genes in undifferentiated embryonic stem cells.
<i>POLRMT</i>	The POLRMT gene encodes a mitochondrial DNA-directed RNA polymerase. The gene product is responsible for mitochondrial gene expression as well as for providing RNA primers for initiation of replication of the mitochondrial genome. Although this polypeptide has the same function as the three nuclear DNA-directed RNA polymerases, it is more closely related to RNA polymerases of phage and mitochondrial polymerases of lower eukaryotes.