

Life course air pollution exposure and cognitive decline: modelled historical air pollution data and the Lothian Birth Cohort 1936

RUNNING TITLE: Air pollution and cognitive decline

Tom C. Russ,^{a,d,*} Mark P. C. Cherrie,^e Chris Dibben,^{e,f} Sam Tomlinson,^{g,h} Stefan Reis,^{g,i}

Ulrike Dragosits,^g Massimo Vieno,^g Rachel Beck,^g Ed Carnell,^g Niamh K. Shortt,^k

Graciela Muniz-Terrera,^{a,c} Paul Redmond,^b Adele M. Taylor,^b Tom Clemens,^e

Martie van Tongeren,^k Raymond M Agius,^k John M. Starr,^{a,b} Ian J. Deary,^b Jamie R. Pearce^k

^{a.} Alzheimer Scotland Dementia Research Centre, University of Edinburgh;

^{b.} Lothian Birth Cohorts, Department of Psychology, University of Edinburgh

^{c.} Edinburgh Dementia Prevention group, Centre for Clinical Brain Sciences, University of Edinburgh;

^{d.} Division of Psychiatry, Centre for Clinical Brain Sciences, University of Edinburgh;

^{e.} School of GeoSciences, University of Edinburgh;

^{f.} Scottish Centre for Administrative Data Research, University of Edinburgh;

^{g.} UK Centre for Ecology & Hydrology (UKCEH), Bush Estate, Penicuik;

^{h.} UK Centre for Ecology & Hydrology (UKCEH), Lancaster Environment Centre, Lancaster University

^{i.} University of Exeter Medical School, Knowledge Spa, Truro

^{j.} Centre for Occupational and Environmental Health, School of Health Sciences, The University of Manchester

k. Centre for Research on Environment, Society and Health, School of GeoSciences,
University of Edinburgh

* Correspondence to: Dr Tom Russ, Alzheimer Scotland Dementia Research Centre,
University of Edinburgh, 7 George Square, Edinburgh, EH8 9JZ, UK
Telephone: +44 (0)131 650 4340; Email: T.C.Russ@ed.ac.uk

Contributions: TCR drafted the article and all authors revised it for critical content.

Funding: This project was funded by the NERC-CSO-MRC call “Improving Health with Environmental Data” (NE/P010849/1).

Manuscript statistics: article body word count of 4103 plus an abstract of 246 words, one text box, five tables, three figures, two supplementary figures, and one supplementary table.

1 **ABSTRACT**

2 **Background:** Air pollution has been consistently linked with dementia and cognitive decline.

3 However, it is unclear whether risk is accumulated through long-term exposure or whether

4 there are sensitive/critical periods. A key barrier to clarifying this relationship is the dearth of

5 historical air pollution data. **Objective:** To demonstrate the feasibility of modelling historical

6 air pollution data and using them in epidemiological models. **Methods:** Using the EMEP4UK

7 atmospheric chemistry transport model, we modelled historical fine particulate matter (PM_{2.5})

8 concentrations for the years 1935, 1950, 1970, 1980, and 1990 and combined these with

9 contemporary modelled data from 2001 to estimate life course exposure in 572 participants in

10 the Lothian Birth Cohort 1936 with lifetime residential history recorded. Linear regression

11 and latent growth models were constructed using cognitive ability (IQ) measured by the

12 Moray House Test at the ages of 11, 70, 76, and 79 years to explore the effects of historical air

13 pollution exposure. Covariates included sex, IQ at age 11 years, social class, and smoking.

14 **Results:** Higher air pollution modelled for 1935 (when participants would have been *in utero*)

15 was associated with worse change in IQ from age 11-70 years ($\beta = -0.006$, SE=0.002, P=0.03)

16 but not cognitive trajectories from age 70-79 years (P>0.05). There was no support for other

17 critical/sensitive periods of exposure or an accumulation of risk (all P>0.05). **Conclusions:**

18 The life course paradigm is essential in understanding cognitive decline and this is the first

19 study to examine life course air pollution exposure in relation to cognitive health.

20

21 **KEYWORDS:** Ageing, dementia, Alzheimer's disease, cognition, air pollution, life course

22 epidemiology, atmospheric composition

23 INTRODUCTION

24 Dementia is a global public health crisis with almost 47 million people affected in 2015 and
25 almost 10 million new cases every year, leading to a projected prevalence of over 130 million
26 by 2050.[1] The brain changes which lead to many dementias – including the most common
27 form, Alzheimer’s dementia – begin in midlife and only manifest in later life.[2] Dementia
28 prevention is now a worldwide priority and accepted risk factors include lower levels of
29 educational attainment (in early life), cardiovascular disease risk factors (with hypertension
30 and obesity particularly highlighted in mid-life), depression, hearing loss, and possession of the
31 *APOE ε4* allele.[3] A recent Lancet Commission report and other analyses have estimated
32 that approximately a third of dementia risk can be explained by these common risk factors.[4,
33 5] With genetic factors (most prominently *APOE ε4* carriage) explaining approximately
34 another third,[6] this leaves around a third of dementia risk unexplained. However, there is
35 also evidence linking a number of environmental risk factors with dementia which might
36 account for some of this unexplained risk.[7] The risk factor for which there is strongest
37 evidence is air pollution.[8, 9] However, the field has been criticised since studies to date have
38 lacked long-term (i.e. whole life) assessment of both exposure and outcome.[10] Thus, no
39 light has yet been shed on the question of *when* in the life-course exposure to air pollution is
40 most harmful to the brain. Recent papers describing “long-term exposure” to air pollution only
41 estimated air pollution exposure at one time point.[11, 12] Indeed, answering this question
42 from a life-course epidemiology perspective is hampered by both a dearth of available air
43 pollution data from earlier than a few decades ago, when systematic long-term monitoring of
44 atmospheric concentrations was implemented and limited information about the geographical
45 location of study participants over their lives.[13] Therefore, we modelled air pollution data
46 (fine particulate matter, with an aerodynamic diameter of 2.5µm or smaller; PM_{2.5}) for

47 multiple time periods and linked these with the Lothian Birth Cohort 1936 (LBC1936) — for
48 whom lifetime residential history is available — to investigate links between air pollution and
49 cognitive change over more than six decades.

50

51 **MATERIALS & METHODS**

52 **Study participants**

53 The LBC1936 is a well-established cohort study, originally comprising 1091 men and women
54 aged approximately 70 years at recruitment. Almost all sat the Moray House Test (MHT) of
55 general cognitive ability in the Scottish Mental Survey in 1947 when they were aged about 11
56 years.[14] Thus, general intelligence data are available for almost all participants at ages 11
57 years, and repeatedly from approximately 70 years onwards. In the present study, we used data
58 from waves 1, 3 and 4 when participants had mean ages of 69.5 (SD=0.8), 76.3 (0.7), and
59 79.3 (0.6) years respectively; the MHT was not administered in wave 2. We operationalised
60 cognitive function in the same way as previous studies, adjusting for age in days and
61 standardising to an IQ-type score with mean 100 and SD 15.[15] In line with previous
62 analyses, change in IQ score was computed as the standardised residual from a linear
63 regression model with age 11 IQ as the independent variable and age 70 IQ as the dependent
64 variable; this is superior to computing the arithmetic difference.[16, 17]

65

66 In 2014, surviving LBC1936 participants were asked to complete a lifetime residential
67 questionnaire and 593 of 704 approached provided usable life grid data (full addresses) which
68 were geocoded to latitude and longitude.[15] Participants had a mean (SD) 11.3 (2.9)
69 separate locations throughout life, ranging from six to 27, with the years they lived there also
70 recorded. Each location was allocated to the closest time period for which air pollution data

71 were available: 1935 (location year 1942 or earlier); 1950 (1943-1959); 1970 (1960-1975);
72 1980 (1976-1985); 1990 (1986-1995); or 2001 (1995-2004); locations after 2004 were
73 excluded to avoid overlap with cognitive testing (wave 1 of the LBC1936 took place from
74 2004-2007[14]). Participants may have had more than one location allocated to each time
75 point — e.g., all locations between the years 1995 and 2004 would be allocated to the 2001
76 time point. Thus, participants had up to ten locations per time point (mean [SD] values
77 ranged from 1.11 [0.34] locations recorded in 2001 to 3.38 [1.33] locations in 1970). Twenty
78 one participants (3.5%) were missing location data for at least one time point, leaving 572 in
79 the final sample who had location (and therefore air pollution) data available for every time
80 point.

81

82 Other covariate data available in the LBC1936 and used in the models included sex, parental
83 occupational social class (using the Registrar General 1951 classification from I to V[18]), and
84 self-reported smoking status (current smoker at wave 1 or non-/ex-smoker).

85

86 **Air pollution modelling**

87 The EMEP4UK atmospheric chemistry transport model (rv4.3 for 1970-2010 and rv4.10 for
88 1935/50) [19] was used to model historical ambient concentrations of fine particulate matter
89 ($PM_{2.5}$) for the years 1935, 1950, 1970, 1980, and 1990 which were combined with
90 contemporary modelled data from 2000 onwards and residential histories to estimate life
91 course exposure. The EMEP4UK model setup, geographical coverage, and configuration used
92 here has been described previously.[20, 21] The model covers the European Union with a
93 horizontal resolution of $0.5^\circ \times 0.5^\circ$ used to provide the boundary condition for a nested UK
94 domain (resolution of $0.055^\circ \times 0.055^\circ$). The modelled $PM_{2.5}$ and other key air pollutant

95 concentrations are routinely validated against observations across UK monitoring
96 networks[20-25] and have been used for the assessment of population exposure over longer
97 time scales in other studies for the period 1970 to 2010.[26] Emission data have been
98 identified as key sources of uncertainty in modelling historic air pollution. A detailed
99 assessment of sensitivity and uncertainty of the Atmospheric Chemistry Transport Models
100 (ACTM) applied in this study has been published elsewhere.[27]
101
102 UK-specific gridded emissions of nitrogen oxides (NO_x), sulphur oxides (SO_x), ammonia
103 (NH_3), non-methane volatile organic compounds (NMVOCs), carbon monoxide (CO), and
104 coarse (PM_{10}) and fine ($\text{PM}_{2.5}$) particulate matter — all necessary for the atmospheric
105 composition calculations — were produced for the target years on a nominal 1km x 1km grid
106 covering the United Kingdom. Emissions data were internally re-projected and processed by
107 the EMEMP4UK model to provide output concentration data at the model grid resolution of
108 $0.055^\circ \times 0.055^\circ$ resolution ($\sim 5\text{km} \times 6\text{km}$) for the UK. The concentrations of $\text{PM}_{2.5}$ calculated
109 by the EMEP4UK model were used in conjunction with the residential history data (as
110 described above). The sources of primary emitted PM are varied but the main contributors are
111 essentially fuel combustion (from all sources) and the use of any mobile machinery, including
112 road traffic. This is in contrast to secondary produced PM — such as ammonium sulphate
113 which is formed by the interaction of ammonia gas and sulphur dioxide — which are strongly
114 linked to specific sectors, such as SO_x (energy) and NH_3 (agriculture). The PM components
115 included in the EMEP4UK model are; primary PM, secondary inorganic and organic aerosols,
116 sea salt, and mineral dust.[22] Although this work is focused on the UK the EMEP4UK
117 requires emission data for the whole of Europe to account for the transboundary
118 imports/export. EU data were kindly supplied at a 50km x 50km resolution.[28, 29] The

119 EMEP4UK model is driven by 3D hourly meteorology calculated by the weather and research
120 forecast model.[30] The meteorological year used for the 1935 and 1950 emission scenario
121 was the year 2014, for the 1970, 1980, 1990 emission scenario was the year 2012, and for the
122 2001 emission scenario the year was 2001.

123

124 For the years 1970, 1980 and 1990, emission data in the official UK inventory, the National
125 Atmospheric Emissions Inventory,[31] were used to scale 2017 spatial distributions (1km x
126 1km resolution) of sectoral totals per pollutant, reported via the Selected Nomenclature for
127 sources of Air Pollution system (SNAP sectors). While the use of contemporary distributions
128 back to 1970 is imperfect, the majority of the time series had the best possible emissions
129 estimates per sector. Emissions for 1950 were estimated and distributed in the Long Term
130 Large Scale project,[32] while the 1935 emissions were a scaled version of the 1950
131 distributions based upon activity data research, using the same spatial methods. Non-NH₃
132 activity data prior to 1970 are largely a reflection of the use of fossil fuels such as coal and of
133 oil-derived products such as diesel (DERV); coal usage in the UK had a double peak either
134 side of World War Two before a rapid decline in the 1960s. Agricultural activity data such as
135 animal numbers, principally associated with emissions of NH₃, were derived from the Vision of
136 Britain database.[33] For source strength emission factors (EFs), many were similar to those
137 used by the UK National Atmospheric Emission Inventory (NAEI) in 1970 while in terms of
138 the spatial distribution of pre-1970 data, the principal differences from the NAEI distributions
139 were: power stations relevant to the time period were mapped and the distribution of
140 industrial activity was tied to census employment data.[32]

141

142 Raster files for each location year (1935, 1950, 1970, 1980, 1990, and 2001) were read into
143 the R statistical computing environment version 4.0.2 using the raster package.[34] The
144 latitude and longitude for each location were used to derive values from these raster files for
145 each participant at each time point. Since participants may have had multiple locations within
146 each time band, the unweighted mean of these multiple values per time point was calculated
147 and used in the analyses as the value for that participant at that time point. For example, the
148 mean of all the air pollution values corresponding to locations recorded between the years
149 1995 and 2004 would be allocated to the 2001 time point for an individual participant. For
150 the purposes of sensitivity analyses, we also computed the maximum value for each time point
151 per participant and the 90% percentile value.

152

153 **Statistical modelling**

154 Following the convention in previous LBC1936 analyses, we modelled change in IQ score
155 from age 11 to age 70 years separately from changes between the ages of 70, 76, and 79 years.
156 The former used a linear regression model of *in utero* air pollution exposure (i.e., using PM_{2.5}
157 data for 1935; this was the only measurement of air pollution which predated the MHT
158 administration at age 11 years) and residualised change in IQ score from age 11 to age 70
159 years in the R statistical computing environment version 4.0.2. We adjusted this model for
160 sex, parental occupation, and smoking status.

161

162 To estimate linear late life cognitive trajectories, we fitted latent growth models to IQ scores
163 from ages 70, 76, and 79 years to estimate the average population cognitive curves. These
164 longitudinal models permit estimation of the outcome's mean and individual trajectories while
165 permitting the inclusion of predictors (time-invariant or time-varying) to study their

166 association with curve parameters such as the intercept and slope parameters. Latent growth
167 models were estimated using maximum likelihood under a ‘missing at random’ missing data
168 assumption. All latent growth models were estimated using MPLUS.[35]

169

170 We summarise the models fitted in **Figure 1**, in which observed data are represented within
171 rectangles, and latent variables such as the model’s intercept and slope are represented within
172 circles. The one-way arrows indicate that the variable at the end of the arrow is explained in
173 the model by the variable at the beginning of the arrow. Often in such figures, two-way curved
174 arrows indicate covariances but as is commonly done – in order to simplify the figure – we
175 have omitted these arrows here as well as the arrows that indicate error terms.

176

177 *Life course models*

178 The two main models in life course epidemiology are critical/sensitive periods and
179 accumulation of risk.[2] To evaluate questions about any *critical/sensitive period(s)* of air
180 pollution exposure and maximise the use of pollution data collected over the life course, we
181 estimated late life trajectories of IQ scores at ages 70, 76 and 79 years, adjusting the intercept
182 and rate of change for air pollution measures collected at different ages in the life course, age
183 11 IQ scores, sex, parental social class, and smoking status. Specifically, we adjusted the
184 models separately for PM_{2.5} in 1935, 1950, 1970, 1980, 1990, or 2001. **Figure 1a** depicts an
185 example of the critical/sensitive period model fitted here.

186

187 In order to evaluate an *accumulation of risk* model, we estimated a series of latent growth
188 models similar to the previous ones, adjusting the level and rate of change for variables
189 defined as the sum of air pollution to which the individual was exposed up to different stages

190 in life. That is, we added *in utero* air pollution measures (i.e., from 1935) to air pollution
191 measures collected in 1950 to derive an indicator of early life exposure; the sum of air
192 pollution measures from 1935 to 1970 covered early life to young adulthood; additionally
193 adding pollution from 1980 encompassed early life to mid-adulthood; the addition of air
194 pollution in 1990 covered early life to late adulthood; finally, adding air pollution from 2001
195 covered early life to later life. **Figure 1b** depicts an example of the accumulation period
196 model fitted here. **Text Box 1** summarises the models used in the present analyses.

197

198 RESULTS

199 A total of 572 LBC1936 participants were included in the present analyses. Their
200 characteristics are summarised in **Table 1**. Briefly, just under half were female, and had
201 completed more than compulsory education. Just over a quarter had parents from
202 occupational social classes I or II (i.e., less deprived), and about half were smokers at the time
203 of recruitment to the LBC1936. Comparing the 572 LBC1936 participants for whom we had
204 location (and therefore air pollution) data with the 519 participants excluded from these
205 analyses revealed no major differences.

206

207 Air pollution

208 **Table 2** shows the average air pollution estimates for the LBC1936 participants and
209 **Supplementary Figure 1** shows the distribution of air pollution exposure at each time period.
210 **Supplementary Figure 2** shows participants' PM_{2.5} exposure changes over time and
211 **Supplementary Table 1** shows the correlations between individuals' PM_{2.5} exposure ranking
212 at different time points. Rankings varied over time — likely due more to participants moving
213 than the relative ranking of areas changing — but were more closely correlated when closer in

214 time, suggesting it is feasible to explore critical/sensitive time periods. **Figure 2** shows the

215 modelled PM_{2.5} values for Scotland in 1935; the urban centres are clearly visible.

216

217 *Is in utero air pollution exposure associated with cognitive trajectories over the life course?*

218 Results from this model are presented in **Table 3a**, where the potential impact of air pollution
219 measured in 1935 on the residualised change in IQ between the ages of 11 and 70 years,
220 controlling for sex, parental social, class, and smoking was explored. There was a small
221 association between higher levels of air pollution exposure in 1935 and *in utero* and a poorer
222 IQ trajectory in IQ from 11 to 70 years ($\beta = -0.006$ IQ point per $1 \mu\text{g}/\text{m}^3$ increase in $\text{PM}_{2.5}$,
223 $\text{SE} = 0.002$, $P = 0.03$).

224

225 *Is in utero exposure to air pollution associated with late life cognitive trajectories?*

226 **Figure 1a** depicts the model that estimates linear changes in IQ scores between the ages of 70,
227 76, and 79 years. In this model, the intercept represents the average IQ score at age 70 for a
228 reference individual (a male whose father had a skilled job, who was exposed *in utero* to
229 average levels of pollution, and who had an average IQ score at age 11 years) and the slope,
230 the average rate of change of IQ scores from age 70 to 79 years. There was a small association
231 between air pollution values for 1935 and the intercept (IQ score at age 70 years), albeit only
232 of borderline statistical significance at conventional levels ($P = 0.06$), but no association with
233 rate of change in IQ score from age 70 to 79 years ($P = 0.36$; **Table 3b**).

234

235 *Critical/sensitive period*

236 For the sake of brevity, **Table 4** only contains estimates of the average value of IQ scores at
237 age 70, their rate of decline until age 79 (for a reference individual, as defined above) and
238 estimates of the association of air pollution exposure at each of the life course time points
239 (apart from 1935 which was reported above) with IQ level at age 70 and rate of change
240 (**Figure 1b**). No period of air pollution exposure had an effect on either the intercept or the

241 rate of change of the models which reached statistical significance at conventional levels (all
242 $P > 0.05$).

243

244 *Accumulation model*

245 Summary results of the models are presented in **Table 5**, where estimates of average IQ level
246 at age 70, average IQ linear rate of change from that same age, and coefficients of the
247 association between air pollution exposure at different stages of life with these parameters are
248 presented. None of the risk periods had an effect on either the intercept or the rate of change
249 of the models which reached statistical significance at conventional levels (all $P > 0.05$). Our
250 findings were robust to the sensitivity analyses varying the aggregation method used for
251 multiple air pollution values.

252

253 **DISCUSSION**

254 Our main finding is that it is feasible to model historical air pollutant concentration data and
255 incorporate them in epidemiological models to explore the influence of exposure to air
256 pollution across the life course. We found little evidence that exposure to air pollution at
257 different stages of the life course was associated with cognitive health and there was no
258 support for an accumulation of risk. There was some evidence of exposure to air pollution *in*
259 *utero* being associated with worse cognitive change between the ages of 11 and 70 years, but
260 the effect size was small ($\beta = -0.006$). In particular we would highlight that these results have
261 large degrees of uncertainties, considering the various methodologies used to produce the
262 different air pollution concentration estimates due the wide range of emissions estimates,
263 particularly for earlier estimates which have a lack of measured air quality data against which
264 to be evaluated.

265

266 *Comparison with other literature*

267 As noted in the introduction, there is a growing wealth of literature on the association
268 between air pollution and subsequent cognitive impairment and dementia, but the majority of
269 publications share the same shortcomings:[10] (1) an inability to explore *when* in the life
270 course exposure to air pollution has the most impact?; (2) which pollutant(s) or components
271 are most important?; and (3) since dementia describes a heterogeneous group of conditions,
272 which are most affected by exposure to air pollution?

273

274 Investigators from the Washington Heights–Inwood Community Aging Project (WHICAP)
275 and the Northern Manhattan Study (NOMAS) recently reported their findings of the impact
276 of “long-term” exposure to air pollution (nitrogen dioxide, PM₁₀, and PM_{2.5}), but these
277 participants (aged 65 years or older) were only recruited in the early 1990s and only their
278 residential address at the time of recruitment was used to estimate their exposure to air
279 pollution; air pollution values for the year before recruitment were used as the exposure.[11,
280 12] Our study was able to track migration and movement throughout the life course,
281 combined with modelled atmospheric concentration data covering most of the twentieth
282 century, to give a much better estimate of each person’s exposure to air pollution at different
283 points in their lives.

284

285 *Limitations and Strengths*

286 Referring to the three criticisms of the air pollution literature described above,[10] the present
287 study could potentially shed some provisional light on the first (when in the life course is most
288 important), but not the second or third. A decision was taken early on to minimise the impact

289 of multiple testing by restricting the pilot modelling (of 1935 data) to a single pollutant; $PM_{2.5}$
290 was chosen since the majority of the literature linking air pollution and dementia focused on
291 that pollutant. Modelling other pollutants — such as smaller PM, NO_x etc. — is feasible and
292 we hope to do this in the future, now that the feasibility of this approach has been
293 demonstrated.

294

295 The collection of lifetime residential histories is rare and greatly augments the other data
296 available in the LBC1936. However, there are limitations to the approach taken
297 (retrospective collection of residential address history), including the fact that it is prone to
298 recall bias. Furthermore, only participants who were alive in 2014 were approached,
299 additionally introducing survivor bias. Finally, the accumulated $PM_{2.5}$ exposure was calculated
300 using an unweighted method – i.e. not taking into account the length of time an individual
301 lived at each address. Our main aim in the present analysis was to establish proof of concept
302 and hope that a more sophisticated weighted calculation – which could arguably be more
303 accurate – could be taken by future studies.

304

305 Almost all participants — until 2001 — were exposed to levels of $PM_{2.5}$ in excess of the World
306 Health Organization's guidelines of a maximum annual mean of $10\mu g/m^3$. [36] For
307 comparison, approximately half of UK Biobank participants were exposed to similarly
308 excessive values at baseline (mean [SD] 10.0 [1.1]) [37], in line with most of the world. [38]
309 There was a general reduction in air pollution over time — and marked step-changes between
310 some time points — but it is unclear how much of this is artefactual, relating to
311 methodological differences between the procedures used to generate these historical estimates.
312 There are inherent uncertainties at all stages of the emissions estimation process, even for the

313 present day, and many of these problems are magnified when trying to recreate an historical
314 context. The lack of measurement data to verify source strength, the lack of data regarding
315 the chemical composition of fuel and the behaviour of combustion technologies prior to
316 emissions mitigations are just some of the many issues that can influence the uncertainty.
317 From 1970 onwards, emissions uncertainties were estimated from the UK Inventory[39] while
318 for 1935 and 1950, uncertainty estimations are expert judgement.[40] Given the assumptions
319 that the fuel use data are lacking some detail (such as certain oil-based products, wood etc.),
320 combustion technology was a lot more polluting than in 1970 due to a lack of various
321 mitigating options such as scrubbers and particulate filters and that there are some missing
322 sources such as construction etc., it is very likely that the uncertainty range is asymmetric with
323 respect to the best estimate. To reflect this probable under estimation, the asymmetry was
324 estimated to be one order of magnitude centred on the mean, that is $\frac{1}{\sqrt{10}} < x < \sqrt{10}$. As an
325 example, the emissions of PM_{2.5} in 1935 were 715kt (range 226-2261kt). Whilst the
326 uncertainties were not utilised within the EMEP4UK model, it is important to note these
327 qualitative estimates and the potential impacts on the final results. **Figure 3** shows the final
328 emissions estimates for all pollutants per year (2015 is displayed for context).
329
330 The focus of this paper is cognitive change rather than dementia. It is important to assess pre-
331 dementia cognitive change and its determinants in their own right, but dementia is inarguably
332 important. However, there were not sufficient LBC1936 participants who had developed
333 dementia to allow meaningful models to be constructed. A comprehensive programme of
334 dementia ascertainment in LBC1936 participants (who are currently in their mid-80s) is
335 currently underway and, once these data are available, similar models focused on dementia
336 will be possible.

337

338 Statistically, the life course model (change between ages 11 and 70 years) and late life models
339 (intercept and change from 70 to 79 years) are not comparable. Furthermore, a linear
340 assumption for the late life cognitive trajectories may be too strong. It may be necessary to
341 explore more complex models, such as quadratic trajectories, but the primary aim of this study
342 was proof of concept and so we have not taken that approach here. With additional time
343 points, we could have constructed a model that would permit estimation of piecewise
344 trajectories. This may become possible as further waves of data become available — wave 5 of
345 the LBC1936 was completed last year and wave 6 was due to begin in Spring 2020 but had to
346 be delayed because of the Covid-19 pandemic.

347

348 *Future directions*

349 This paper is the first step towards an understanding of the associations between air pollution
350 and cognitive decline and dementia from a life course epidemiology perspective. The modelled
351 historical air pollution data need to be refined and harmonised across different time points –
352 and these data used to provide a robust estimate of life course exposure – but we believe that
353 we have demonstrated the feasibility and value of this approach. However, these air pollution
354 data will be of little value without well-characterised cohort studies with full residential
355 histories for participants, such as are available for the LBC1936. All high quality longitudinal
356 cohort studies should explore whether it is possible to obtain such data through record linkage
357 or — as in the LBC1936 — self-report.

358

359 *Conclusions*

360 We have shown the feasibility of modelling historical air pollution data and incorporating
361 them in epidemiological models. This is the first step in a new area and we look forward to a
362 greater understanding of the life course effects of air pollution on the brain in coming years.

ACKNOWLEDGEMENTS

This study was funded by the “Improving Health with Environmental Data” call from the Natural Environment Research Council, the Chief Scientist Office, and the Medical Research Council (NE/P010849/1). It follows research undertaken under the Mobility, Mood, and Place research project (2013–2016), supported by Research Councils UK (EP/K037404/1) as part of the Cross-Council Lifelong Health and Wellbeing Program under Principal Investigator Catharine Ward Thompson and Co-Investigators Jamie Pearce and Niamh Shortt.

TCR and the late JMS are/were members of the Alzheimer Scotland Dementia Research Centre funded by Alzheimer Scotland. The Lothian Birth Cohort 1936 is funded by Age UK (Disconnected Mind grant). TCR, the late JMS, and IJD were members of the University of Edinburgh Centre for Cognitive Ageing & Cognitive Epidemiology (which recently closed), part of the cross council Lifelong Health and Wellbeing Initiative (MR/K026992/1). Funding from the Biotechnology and Biological Sciences Research Council and Medical Research Council is gratefully acknowledged for the latter.

Initial findings of this study were presented at the Alzheimer’s Association International Conference in Chicago, 2018 (<https://doi.org/10.1016/j.jalz.2018.06.2861>).

CONFLICTS OF INTEREST

None

REFERENCES

- [1] Prince MJ, Wimo A, Guerchet M, Ali G-C, Wu Y-T, Prina AM (2015) *World Alzheimer Report 2015. The Global Impact of Dementia: an analysis of prevalence, incidence, cost and trends*, Alzheimer's Disease International, London.
- [2] Whalley LJ, Dick FD, McNeill G (2006) A life-course approach to the aetiology of late-onset dementias. *Lancet Neurology* **5**, 87-96.
- [3] Livingston G, Sommerlad A, Orgeta V, Costafreda SG, Huntley J, Ames D, Ballard C, Banerjee S, Burns A, Cohen-Mansfield J, Cooper C, Fox N, Gitlin LN, Howard R, Kales HC, Larson EB, Ritchie K, Rockwood K, Sampson EL, Samus Q, Schneider LS, Selbaek G, Teri L, Mukadam N (2017) Dementia prevention, intervention, and care. *Lancet* **390**, 2673-2734.
- [4] Norton S, Matthews FE, Barnes DE, Yaffe K, Brayne C (2014) Potential for primary prevention of Alzheimer's disease: an analysis of population-based data. *Lancet Neurology* **13**, 788-794.
- [5] Tomata Y, Li X, Karlsson IK, Mosing M, Pedersen N, Hägg S (2020) Joint impact of common risk factors on incident dementia: A cohort study of the Swedish Twin Registry. *Journal of Internal Medicine*.
- [6] Van Cauwenberghe C, Van Broeckhoven C, Sleegers K (2016) The genetic landscape of Alzheimer disease: clinical implications and perspectives. *Genetics in Medicine* **18**, 421-430.
- [7] Killin LO, Starr JM, Shiue IJ, Russ TC (2016) Environmental risk factors for dementia: a systematic review. *BMC Geriatrics* **16**, 175.
- [8] Peters R, Ee N, Peters J, Booth A, Mudway I, Anstey KJ (2019) Air pollution and dementia: a systematic review. *Journal of Alzheimer's Disease*, 1-19.
- [9] Rizzuto D, Grande G, Ljungman P, Bellander T (2019) Long-term exposure to air pollution and the risk of dementia: the role of cardiovascular diseases. *Innovation in Aging* **3**, S119.
- [10] Russ TC, Reis S, van Tongeren M (2019) Air pollution and brain health: defining the research agenda. *Curr Opin Psychiatry* **32**, 97-104.
- [11] Kulick ER, Elkind MSV, Boehme AK, Joyce NR, Schupf N, Kaufman JD, Mayeux R, Manly JJ, Wellenius GA (2020) Long-term exposure to ambient air pollution, APOE-ε4 status, and cognitive decline in a cohort of older adults in northern Manhattan. *Environ Int* **136**, 105440.
- [12] Kulick ER, Wellenius GA, Boehme AK, Joyce NR, Schupf N, Kaufman JD, Mayeux R, Sacco RL, Manly JJ, Elkind MSV (2020) Long-term exposure to air pollution and trajectories of cognitive decline among older adults. *Neurology* **94**, e1782-e1792.
- [13] Pearce JR (2018) Complexity and Uncertainty in Geography of Health Research: Incorporating Life-Course Perspectives. *Annals of the American Association of Geographers* **108**, 1491-1498.
- [14] Taylor AM, Pattie A, Deary IJ (2018) Cohort Profile Update: The Lothian Birth Cohorts of 1921 and 1936. *Int J Epidemiol* **47**, 1042-1042r.
- [15] Cherrie MPC, Shortt NK, Mitchell RJ, Taylor AM, Redmond P, Thompson CW, Starr JM, Deary IJ, Pearce JR (2018) Green space and cognitive ageing: A retrospective life course analysis in the Lothian Birth Cohort 1936. *Soc Sci Med* **196**, 56-65.
- [16] Gow AJ, Whiteman MC, Pattie A, Whalley L, Starr J, Deary IJ (2005) Lifetime intellectual function and satisfaction with life in old age: longitudinal cohort study. *BMJ* **331**, 141-142.
- [17] Prochaska JJ, Velicer WF, Nigg CR, Prochaska JO (2008) Methods of quantifying change in multiple risk factor interventions. *Preventive Medicine* **46**, 260-265.
- [18] Office of Population Censuses and Surveys (1951) *Census of population 1951*, Her Majesty's Stationery Office, London.
- [19] Vieno M, Heal MR, Hallsworth S, Famulari D, Doherty RM, Dore AJ, Tang YS, Braban CF, Leaver D, Sutton MA, Reis S (2014) The role of long-range transport and domestic

- emissions in determining atmospheric secondary inorganic particle concentrations across the UK. *Atmos. Chem. Phys.* **14**, 8435-8447.
- [20] Vieno M, Heal MR, Twigg MM, MacKenzie I, Braban CF, Lingard J, Ritchie S, Beck R, MÓring A, Ots R (2016) The UK particulate matter air pollution episode of March–April 2014: more than Saharan dust. *Environmental Research Letters* **11**, 044004.
- [21] Vieno M, Heal M, Williams M, Carnell E, Nemitz E, Stedman J, Reis S (2016) The sensitivities of emissions reductions for the mitigation of UK PM_{2.5}. *Atmospheric Chemistry and Physics* **16**, 265-276.
- [22] Ots R, Vieno M, Allan JD, Reis S, Nemitz E, Young DE, Coe H, Di Marco C, Detournay A, Mackenzie IA (2016) Model simulations of cooking organic aerosol (COA) over the UK using estimates of emissions based on measurements at two sites in London. *Atmospheric Chemistry and Physics* **16**, 13773-13789.
- [23] Ots R, Heal MR, Young DE, Williams LR, Allan JD, Nemitz E, Di Marco C, Detournay A, Xu L, Ng NL (2018) Modelling carbonaceous aerosol from residential solid fuel burning with different assumptions for emissions. *Atmospheric Chemistry and Physics* **18**, 4497-4518.
- [24] Lin C, Heal MR, Vieno M, MacKenzie IA, Armstrong BG, Butland BK, Milojevic A, Chalabi Z, Atkinson RW, Stevenson DS (2017) Spatiotemporal evaluation of EMEP4UK-WRF v4. 3 atmospheric chemistry transport simulations of health-related metrics for NO₂, O₃, PM₁₀, and PM_{2.5} for 2001–2010. *Geoscientific Model Development* **10**, 1767-1787.
- [25] Twigg MM, Ilyinskaya E, Beccaceci S, Green DC, Jones MR, Langford B, Leeson SR, Lingard JJ, Pereira GM, Carter H (2016) Impacts of the 2014–2015 Holuhraun eruption on the UK atmosphere. *Atmospheric Chemistry and Physics* **16**, 11415-11431.
- [26] Carnell E, Vieno M, Vardoulakis S, Beck R, Heaviside C, Tomlinson S, Dragosits U, Heal MR, Reis S (2019) Modelling public health improvements as a result of air pollution control policies in the UK over four decades—1970 to 2010. *Environmental Research Letters* **14**, 074001.
- [27] Aleksankina K, Reis S, Vieno M, Heal MR (2019) Advanced methods for uncertainty assessment and global sensitivity analysis of an Eulerian atmospheric chemistry transport model. *Atmos. Chem. Phys.* **19**, 2881-2898.
- [28] Simpson D (2017) *Personal communication*.
- [29] Engardt M, Simpson D, Schwikowski M, Granat L (2017) Deposition of sulphur and nitrogen in Europe 1900–2050. Model calculations and comparison to historical observations. *Tellus B: Chemical and Physical Meteorology* **69**, 1328945.
- [30] Skamarock W, Klemp J, Dudhia J, Gill D, Liu Z, Berner J, Wang W, Powers J, Duda M, Barker D (2019) *A Description of the Advanced Research WRF Model. Version 4*; (No. NCAR/TN-556+ STR), National Center for Atmospheric Research, Boulder, CO, USA.
- [31] NAEI, National Atmospheric Emissions Inventory: Data, <https://naei.beis.gov.uk/data/>.
- [32] Tipping E, Davies JAC, Henrys PA, Kirk GJD, Lilly A, Dragosits U, Carnell EJ, Dore AJ, Sutton MA, Tomlinson SJ (2017) Long-term increases in soil carbon due to ecosystem fertilization by atmospheric nitrogen deposition demonstrated by regional-scale modelling and observations. *Scientific Reports* **7**, 1890.
- [33] Vision of Britain Historic agricultural data, <http://www.visionofbritain.org.uk>,
- [34] Hijmans RJ, Etten Jv, raster: Geographic analysis and modeling with raster data. R package version 2.0-12., <http://CRAN.R-project.org/package=raster>,
- [35] Muthén LK, Muthén BO (1998-2017) *Mplus User's Guide*, Muthén & Muthén, Los Angeles, CA.
- [36] WHO (2006) *Air quality guidelines for particulate matter, ozone, nitrogen dioxide and sulfur dioxide. Global update 2005. Summary of risk assessment*, World Health Organization, Geneva.

- [37] UK Biobank, UK Biobank Data Showcase: Data-Field 24006 - Particulate matter air pollution (pm2.5), <http://biobank.ctsu.ox.ac.uk/crystal/field.cgi?id=24006>,
- [38] Shaddick G, Thomas ML, Mudu P, Ruggeri G, Gummy S (2020) Half the world's population are exposed to increasing air pollution. *NPJ Climate and Atmospheric Science* **3**, 23.
- [39] Richmond B, Misra A, Broomfield M, Brown P, Karagianni E, Murrells T, Pang Y, Passant N, Pearson B, Stewart R, Thistlethwaite G, Wakeling D, Walker C, Wiltshire J (2018) *UK Informative Inventory Report (1990 to 2017)*.
- [40] Smith SJ, van Aardenne J, Klimont Z, Andres RJ, Volke A, Delgado Arias S (2011) Anthropogenic sulfur dioxide emissions: 1850–2005. *Atmos. Chem. Phys.* **11**, 1101-1116.

Text Box. Summary of the models used in the present analyses

OUTCOME	EXPOSURE
Sensitive/critical period(s)	
Change in IQ from age 11 to age 70 years	In utero PM _{2.5} exposure (1935)
Trajectories of IQ from age 70 to 79 years (intercept and rate of change)	<i>In utero</i> PM _{2.5} exposure (1935) PM _{2.5} exposure aged ~14 years (1950) PM _{2.5} exposure aged ~34 years (1970) PM _{2.5} exposure aged ~44 years (1980) PM _{2.5} exposure aged ~54 years (1990) PM _{2.5} exposure aged ~65 years (2001)
Accumulation of risk	
Trajectories of IQ from age 70 to 79 years (intercept and rate of change)	Early life (1935 + 1950) Early life to young adulthood (1935 + 1950 + 1970) Early life to mid-adulthood (1935 + 1950 + 1970 + 1980) Early life to late adulthood (1935 + 1950 + 1970 + 1980 + 1990) Early life to later life (1935 + 1950 + 1970 + 1980 + 1990 + 2001)

Table 1. Sample characteristics: life course air pollution exposure and cognitive decline in the LBC1936

	Included ^a	Excluded ^b	P ^c	Total LBC1936 sample
N	572	519		1091
Age at SMS1947 (mean [SD] years)	10.92 (0.27)	10.96 (0.29)	0.027	10.94 (0.28)
Female (%)	46.9	53.0	0.0497	49.8
Age 11 IQ ^d (mean [SD])	101.6 (15.0)	98.2 (14.9)	<0.001	100.0 (15.0)
Parental occupational social class (% class I or II)	27.7	26.3	0.011	27.1
Current smoker at baseline (%)	49.3	42.2	0.022	45.9

^a Participants were included if they had at least one location recorded for each time period.

^b Excluded participants included 21 with missing location data for at least one time period, 111 who did not respond to the questionnaire requesting lifetime residential history, and 387 who were not approached, mainly because they had died or withdrawn from the study prior to the questionnaire being used in 2014.

^c P-values from comparisons of included and excluded participants

^d 31 participants were missing age 11 intelligence data

^e Self-reported

LBC1936: Lothian Birth Cohort 1936 (N=1091);

SMS1947: Scottish Mental Survey 1947 (N=70,805, of which the LBC1936 is a subset)

Table 2. Annual average particulate matter (PM_{2.5}) values at different time points for all participants: life course air pollution exposure and cognitive decline in the LBC1936

Year	Mean (sd)	Range	N _{total} ^a	>10µg/m ³ ^b
1935	34.8 (16.0)	5.2-133.0	590	562 (95%)
1950	32.4 (12.8)	6.0-113.3	591	578 (98%)
1970	17.0 (1.5)	9.5-23.9	585	584 (100%)
1980	15.0 (1.5)	7.3-24.0	580	575 (99%)
1990	13.4 (1.2)	6.7-21.4	580	579 (100%)
2001	7.9 (0.6)	4.8-15.9	591	4 (0.7%)

^a 593 participants provided lifetime residential histories; 572 had air pollution data from all time periods and were included in the present analyses

^b The number (%) of participants whose PM_{2.5} exposure exceeded the WHO guidelines of an annual mean of ≤10µg/m³

Table 3. Results from (a) linear regression of residualised change in IQ from age 11 to age 70 years and (b) latent growth models fitted to IQ scores to estimate cognitive trajectories at ages 70, 76, and 79 years: life course air pollution exposure and cognitive decline in the LBC1936

(a) Change in IQ between ages 11 and 70 years				
	β (SE)	P		
<i>In utero</i> exposure to air pollution	-0.006 (0.002)	0.03		

(b) IQ trajectories from age 70 to age 79 years					
Intercept (average IQ at 70 years)	97.74 (1.38)		Rate of change (in IQ from age 70 to 79 years)	-0.11 (0.31)	0.71
Random Intercept Variance	71.12 (5.61)		Random Slopes variance	2.36 (0.31)	<0.001
Intercept-slope correlation	-3.02 (0.06)	<0.001			
	β (SE)	P	β	P	
<i>In utero</i> exposure to air pollution	0.05 (0.02)	0.06	<i>In utero</i> exposure to air pollution	-0.006 (0.006)	0.36

Model (a) is adjusted for sex, parental (father's) occupation, and smoking

Model (b) is adjusted for sex, age 11 IQ, parental (father's) occupation, and smoking

Coefficients (β) represent the change in IQ and rate of change per 1 $\mu\text{g}/\text{m}^3$ increase in $\text{PM}_{2.5}$

Table 4. Estimates of the association between air pollution exposures at different time points in the life course with mean IQ at age 70 and its rate of change from 70 to 79 years: life course air pollution exposure and cognitive decline in the LBC1936

Level and change in IQ between ages 70, 76, and 79 years						
	IQ	B (SE)	P		B (SE)	P
Age 70 IQ	102.14 (1.62)			Rate of change in IQ from age 70-79	-0.14 (0.33)	0.46
Pollution 1950		-0.027 (0.04)	0.52		-0.001 (0.006)	0.84
Age 70 IQ	105.14 (5.56)				0.21 (1.13)	0.85
Pollution 1970		-0.22 (0.04)	0.46		-0.03 (0.06)	0.65
Age 70 IQ	96.38 (4.94)				0.84 (1.51)	0.57
Pollution 1980		0.32 (0.32)	0.32		-0.07 (0.10)	0.45
Age 70 IQ	99.39 (7.34)				1.46 (1.51)	0.33
Pollution 1990		0.14 (0.54)	0.79		-0.13 (0.11)	0.24
Age 70 IQ	103.21 (8.84)				-0.91 (1.86)	0.62
Pollution 2001		-0.24 (1.10)	0.82		0.08 (0.23)	0.74

Models adjusted for sex, age 11 IQ, parental (father's) occupation, and smoking status

Coefficients (β) represent the change in IQ and rate of change per 1 $\mu\text{g}/\text{m}^3$ increase in $\text{PM}_{2.5}$

Table 5. Estimates of IQ intercept (at age 70 years) and rate of change from age 70 and of the association of cumulative air pollution exposure at various stages of life: life course air pollution exposure and cognitive decline in the LBC1936

Level and change in IQ between ages 70, 76, and 79 years						
	IQ	β (SE)	P	Rate of change in IQ from age 70-79	β (SE)	P
Age 70 IQ	100.49 (1.63)				-0.12 (0.34)	0.72
Early life (1935 + 1950)		0.01 (0.02)	0.54		-0.002 (0.003)	0.47
Age 70 IQ	100.42 (1.86)				-0.07 (0.39)	0.84
Early life to young adulthood (1935 + 1950 + 1970)		0.01 (0.02)	0.58		-0.002 (0.003)	0.46
Age 70 IQ	100.19 (2.08)				-0.02 (0.43)	0.96
Early life to mid-adulthood (1935 + 1950 + 1970 + 1980)		0.01 (0.02)	0.54		-0.003 (0.003)	0.42
Age 70 IQ	100.03 (2.27)				0.04 (0.47)	0.92
Early life to late adulthood (1935 + 1950 + 1970 + 1980 + 1990)		0.01 (0.02)	0.54		-0.003 (0.003)	0.38
Age 70 IQ	99.96 (2.39)				0.06 (0.49)	0.89
Early life to later life (1935 + 1950 + 1970 + 1980 + 1990 + 2001)		0.01 (0.02)	0.54		-0.003 (0.003)	0.38

Models adjusted for sex, age 11 IQ, parental (father's) occupation, and smoking status
Coefficients (β) represent the change in IQ and rate of change per 1 $\mu\text{g}/\text{m}^3$ increase in $\text{PM}_{2.5}$

FIGURE LEGENDS

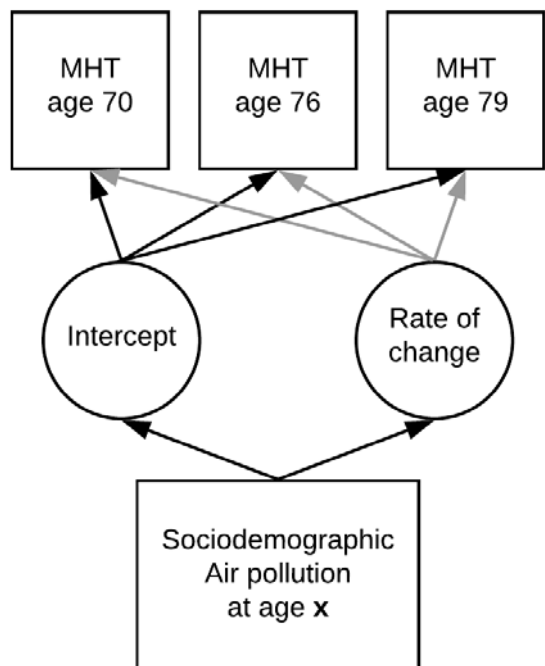
Figure 1. Directed Acyclic Graphs representing the (a) critical/sensitive period and (b) accumulation models fitted to IQ scores: life course air pollution exposure and cognitive decline in the LBC1936

Figure 2. Modelled particulate matter ($PM_{2.5}$) values in 1935: life course air pollution exposure and cognitive decline in the LBC1936

Figure 3. Modelled emission totals (Gg) with uncertainty ranges for five air pollutants (CO , NH_3 , NMVOCs, NO_x , and SO_x), plus $PM_{2.5}$, across five model years (2015 is included for context) for use in the EMEP4UK model: life course air pollution exposure and cognitive decline in the LBC1936

Figure 1. Figure representing the (a) critical/sensitive period and (b) accumulation models fitted to IQ scores: life course air pollution exposure and cognitive decline in the LBC1936

(a) Critical/sensitive period models



(b) Accumulation models

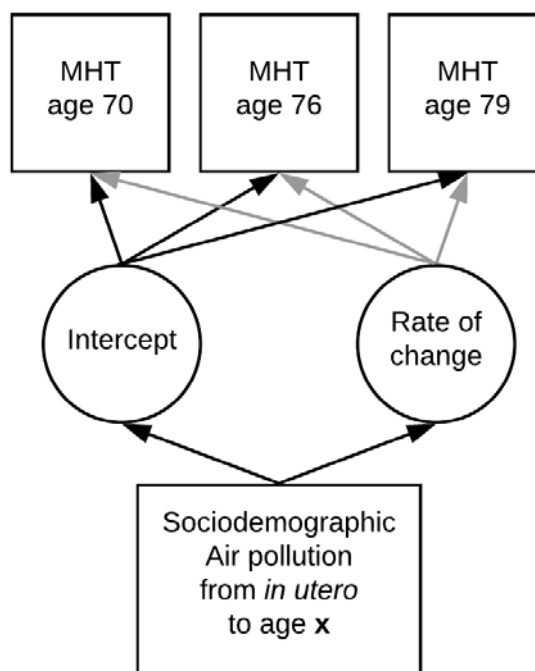
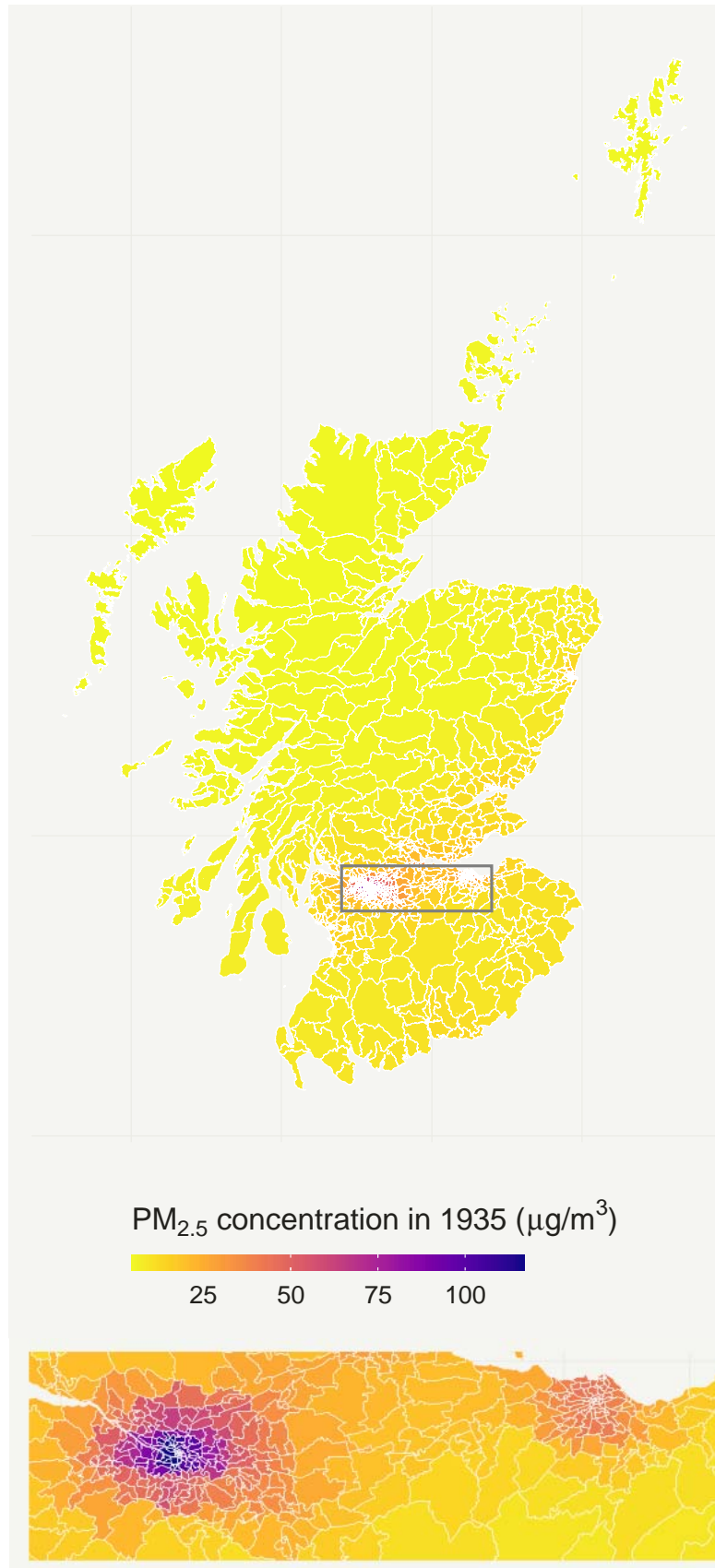
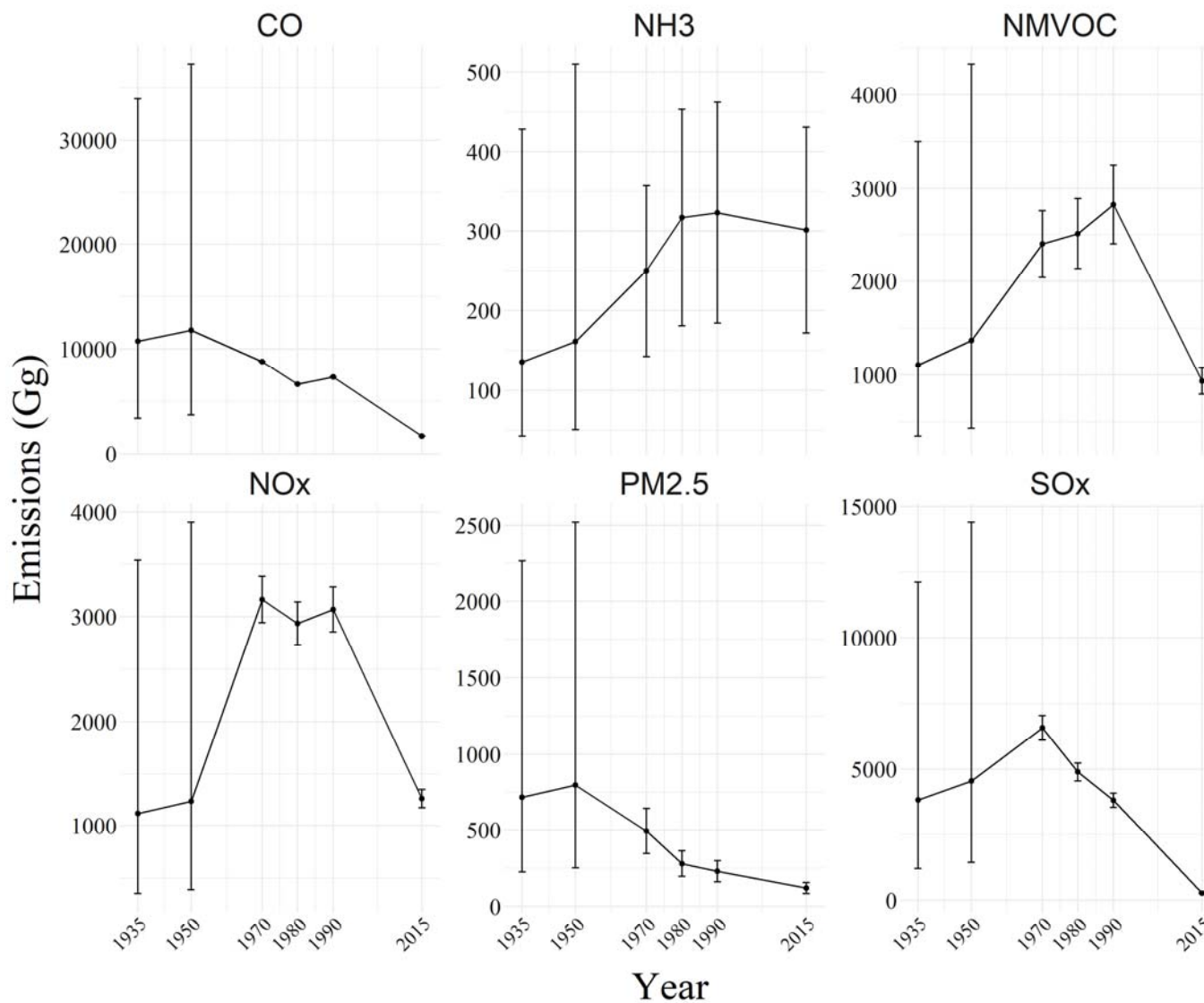


Figure 2. Modelled particulate matter (PM_{2.5}) values in 1935: life course air pollution exposure and cognitive decline in the LBC1936

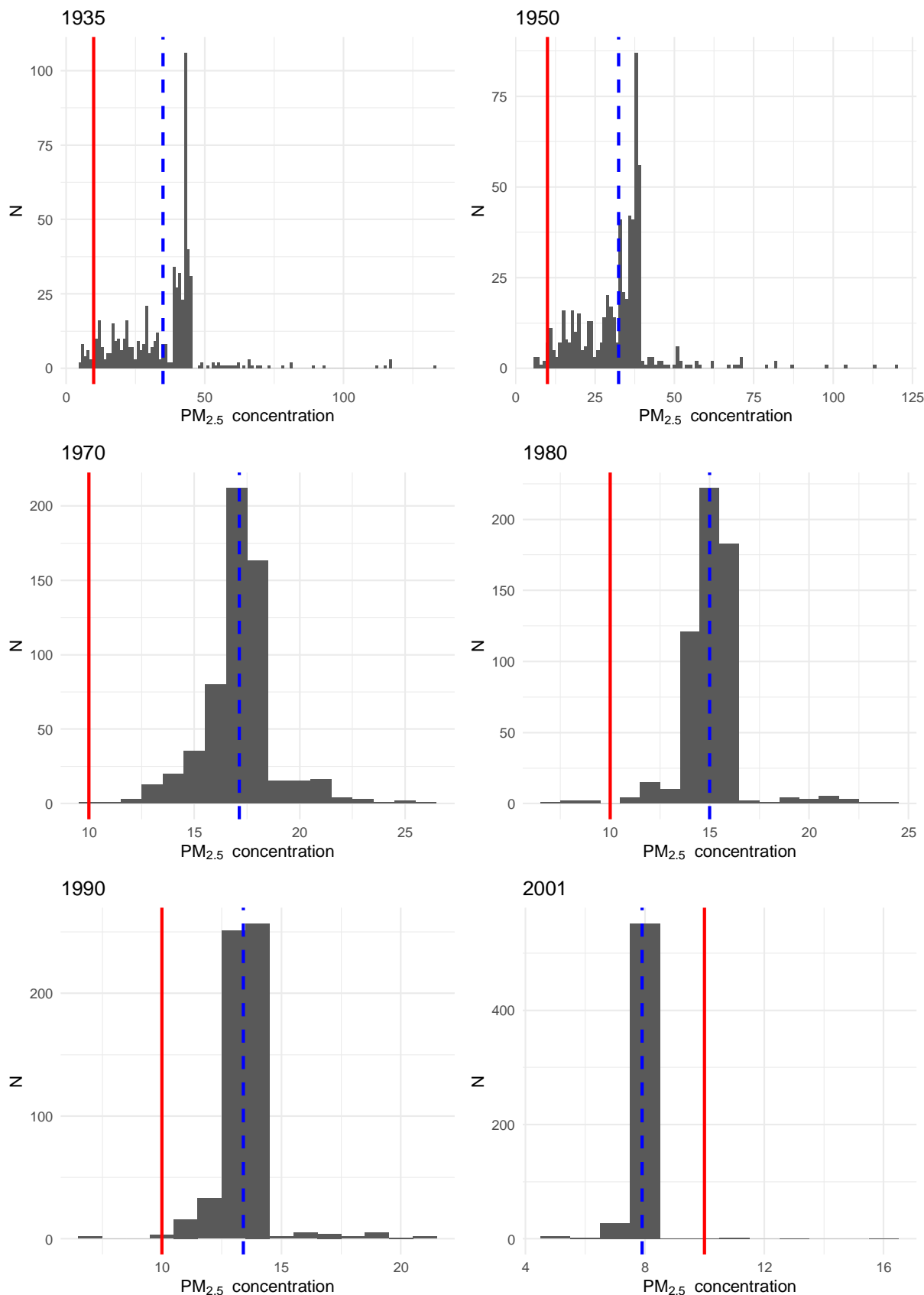


The area displayed in the lower panel and enclosed in a box on the upper panel is the central belt of Scotland including Glasgow (left) and Edinburgh (right). Over half of the population of Scotland lives in this area.

Figure 3. Modelled emissions totals (Gg) with uncertainty ranges for five air pollutants (CO, NH₃, NMVOCs, NO_x, and SO_x), plus PM_{2.5}, across five model years (2015 is included for context) for use in the EMEP4UK model: life course air pollution exposure and cognitive decline in the LBC1936

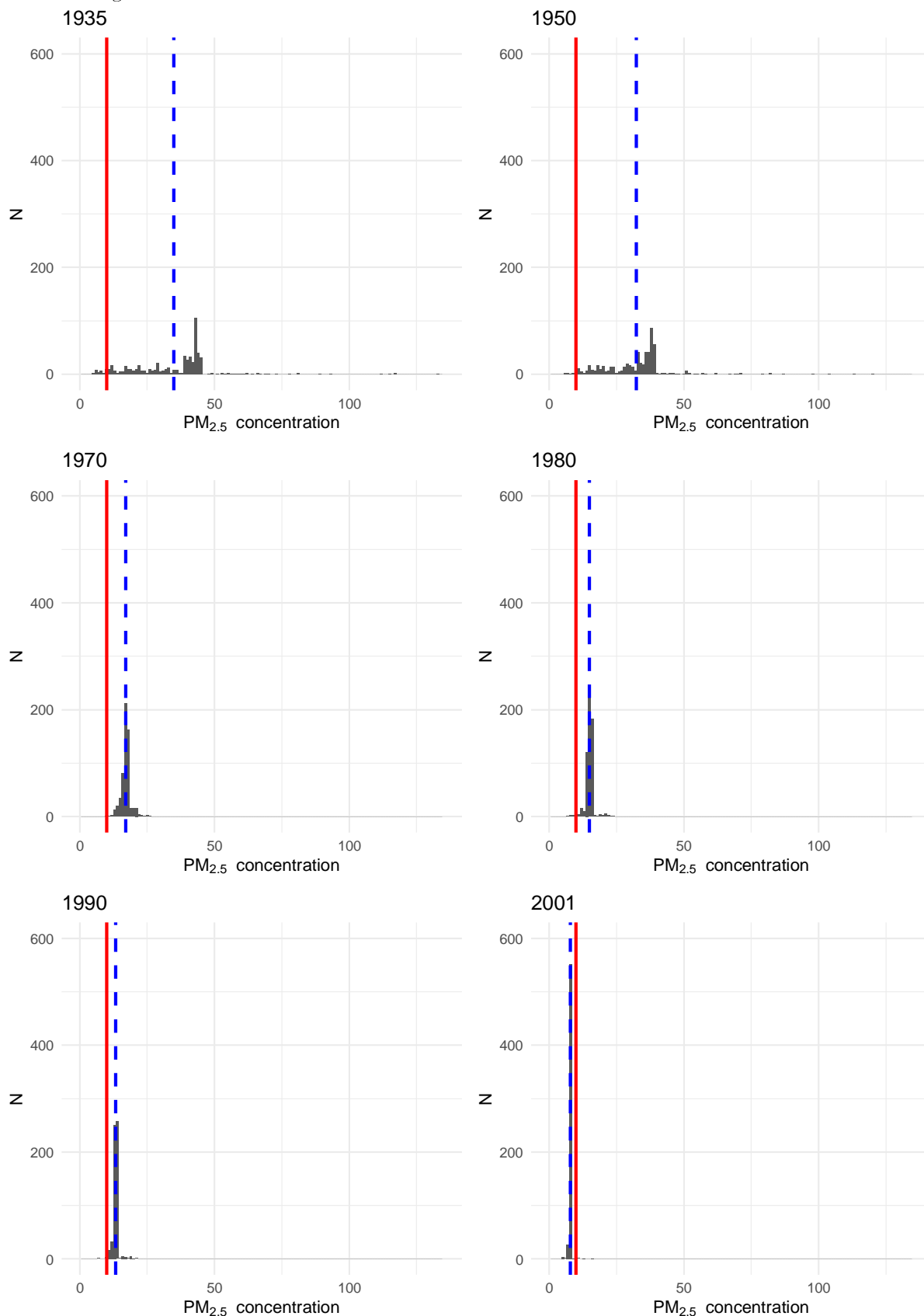


Supplementary Figure 1a. Mean PM_{2.5} exposure for each participant at each time point for which air pollution concentration data were modelled: life course air pollution exposure and cognitive decline in the LBC1936



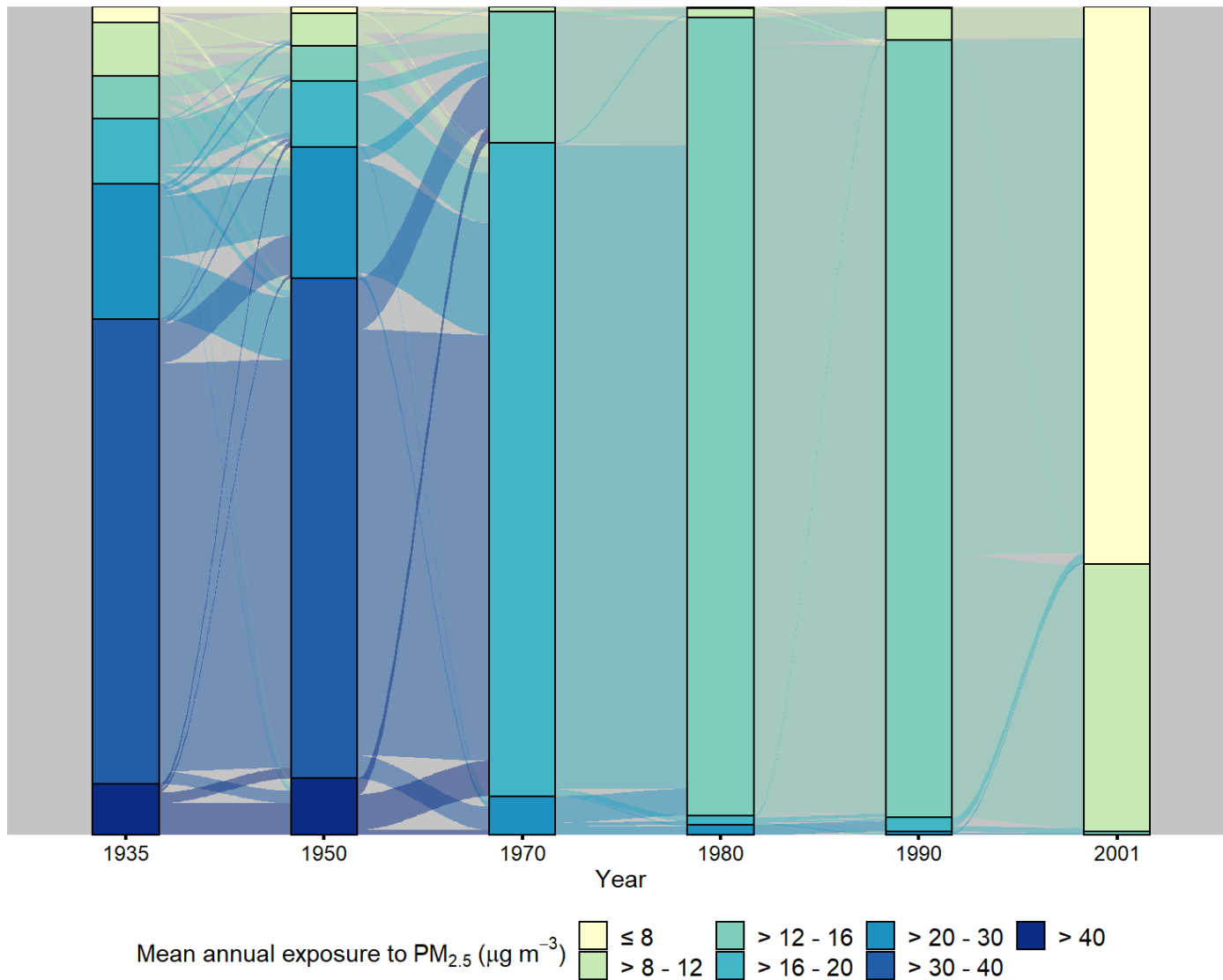
Blue dotted line — mean PM_{2.5} value; Solid red line — WHO guidelines (annual average $\leq 10\mu\text{g}/\text{m}^3$)

Supplementary Figure 1b. Mean $PM_{2.5}$ exposure for each participant at each time point for which air pollution concentration data were modelled (all plotted on the same x and y scales): life course air pollution exposure and cognitive decline in the LBC1936



Blue dotted line — mean $PM_{2.5}$ value; Solid red line — WHO guidelines (annual average $\leq 10 \mu g/m^3$)

Supplementary Figure 2. Sankey diagram indicating the change in mean annual PM_{2.5} exposure within individuals over time: life course air pollution exposure and cognitive decline in the LBC1936



Supplementary Table 1. Correlations between PM_{2.5} exposure rankings at different time points: life course air pollution exposure and cognitive decline in the LBC1936

	1935	1950	1970	1980	1990	2001
1950	0.53	-				
1970	0.13	0.22	-			
1980	0.06	0.18	0.57	-		
1990	0.09	0.19	0.53	0.82	-	
2001	0.003	0.10	0.05	0.03	0.08	-