

1 **Dose-response relationship among body mass index, abdominal adiposity and atrial fibrillation in**
2 **patients undergoing cardiac surgery: a meta-analysis of 30 prospective studies**

Running title: Adiposity and atrial fibrillation after cardiac surgery

Menglu Liu^{*1}, M.D., Kaibo Mei^{*2}, M.D., Jianyong Ma³, M.D., Ph.D., Peng Yu⁴, M.D., Ph.D., Lixia Xie⁵,
M.D., Yujie Zhao¹, M.D., Xiao Liu⁶, M.D., Ph.D.

1 Department of Cardiology, The Seventh People's Hospital of Zhengzhou, Zhengzhou, Henan, 450016,
China.

2 Anesthesiology Department, the People's Hospital of Shangrao, Jiangxi, 330006, China

3Department of Pharmacology and Systems Physiology University of Cincinnati College of Medicine,
Cincinnati, OH 45267

4 Department of Endocrine, the Second Affiliated Hospital of Nanchang University, Jiangxi, 330006, China

5 Department of Respiratory and Critical Care Medicine, the Second Affiliated Hospital of Nanchang
University, Jiangxi, 330006, China

6 Department of Cardiology, the Second Affiliated Hospital of Nanchang University, Jiangxi, 330006, China

3 **Corresponding author:**

4 Yujie Zhao, MD., Department of Cardiology, The Seventh People's Hospital, Zhengzhou, Henan Jiangxi,
5 330006, China, Email: 184231892@qq.com

Dr. Xiao Liu, M.D., Ph.D., Department of Cardiology, The Second Affiliated Hospital of Sun Yat-Sen
University, Guangzhou, 510080, Guangdong, China.

*These authors contribute equally

Word count: 3152

Conflicts of interest: None.

Keyword: obesity paradox; atrial fibrillation; dose-response; meta-analysis; body mass index; risk factor

6

Abstract

7 **Background:** Whether being overweight increases the risk of postoperative atrial fibrillation (POAF) is
8 unclear, and whether adiposity independently contributes to POAF has not been comprehensively studied.
9 Thus, we conducted a meta-analysis to clarify the strength and shape of the exposure-effect relationship
10 between adiposity and POAF.

11 **Methods:** The PubMed, Cochrane Library, and EMBASE databases were searched for prospective studies
12 (RCTs, cohort studies, and nest-case control studies) reporting data regarding the relationship between
13 adiposity and the risk of POAF.

14 **Results:** Thirty publications involving 139,302 patients were included. Analysis of categorical variables
15 showed that obesity (RR: 1.39, $P < 0.001$), but not being underweight (RR: 1.44, $P = 0.13$) or being overweight
16 (RR: 1.03, $P = 0.48$), was associated with an increased risk of POAF. In the exposure-effect analysis, the
17 summary RR for a 5-unit increment in body mass index (BMI) was 1.09 ($P < 0.001$) for the risk of POAF.
18 There was a significant linear relationship between BMI and POAF ($P_{\text{nonlinearity}} = 0.91$); the curve was flat and
19 began to rise steeply at a BMI of approximately 30. Notably, BMI levels below 30 (overweight) were not
20 associated with a higher risk of POAF. In the subgroup analysis of surgery types, the pooled RR values for a
21 BMI increase of 5 for coronary artery bypass graft and valve surgery were 1.21 ($P < 0.01$) and 1.34 ($P = 0.25$),
22 respectively, suggesting that a potential difference in the association exists by surgery type. Additionally,
23 waist obesity was associated with the risk of POAF (RR: 1.55, $P < 0.001$).

24 **Conclusion:** Based on the current evidence, our findings show that adiposity was independently associated
25 with an increased risk of POAF, while being underweight or overweight might not significantly increase the
26 POAF risk. The magnitude of the effect of obesity on AF in patients undergoing valve surgery might be
27 small, and this finding needs to be further confirmed.

Keywords: overweight; obesity; waist circumference; atrial fibrillation; cardiac surgery; body mass index;
coronary artery bypass graft

28 Introduction

29 The prevalence of overweight and obesity has rapidly increased in recent decades in both developing and
30 developed countries^[1-3]. This increase has raised serious public health concerns due to the positive
31 association between overweight and obesity and an increased risk of various chronic diseases, including
32 cardiovascular diseases, metabolic syndrome, all-cause mortality, and several types of cancer^[4-7].

33 Postoperative atrial fibrillation (POAF) is among the most common complications arising from cardiac
34 surgery, affecting between 20% and 50% of patients, and is associated with significantly worse adverse
35 outcomes (such as all-cause death and stroke)^[8]. Several prospective studies have reported increased POAF
36 with a higher body mass index^[9-11] (BMI, kg/m²). Although various studies reported a positive association
37 between obesity (BMI>30) and POAF in patients undergoing cardiac surgery, whether being overweight
38 (BMI of 25-29.9) increases the risk remains unclear as some studies found a positive association^[12, 13], while
39 other studies did not^[14-16]. Several well-designed meta-analyses based on a categorical or continuous model
40 found an increased risk of POAF among individuals with obesity. These studies provide valuable
41 information. However, these studies have several limitations. First, it is arguable that the use of a categorical
42 model in meta-analyses has the risk of reducing power and precision by dividing the exposure into several
43 groups^[17]. Furthermore, the use of a continuous model might not detect the dose-specific association as
44 several studies have also reported a “U”-shaped association between BMI and POAF^[14, 18]. Second, some
45 important factors associated with the risk of AF, such as chronic obstructive pulmonary disease (COPD),
46 smoking, diabetes, and left atrial diameter (LAD), were reported to have a higher prevalence in individuals
47 with obesity and those undergoing cardiac surgery. Nevertheless, a univariate meta-analysis cannot account
48 for such confounders in the relationship between obesity and POAF. Third, to date, no comprehensive study
49 has quantitatively assessed the exposure-effect relationship between BMI and POAF. The shape of the
50 exposure-effect curve and whether being overweight increases the risk of POAF are still unclear. Moreover,
51 several studies have also assessed the association between abdominal measures of adiposity, such as waist
52 circumference, and advocated that these measures are a better index for predicting the incidence of POAF^{[14,}
53 ^{19]}.

54 Thus, we conducted a dose-response meta-analysis to quantify the association among body mass index,
55 abdominal adiposity and the incidence of POAF.

56 Methods

57 This study was performed according to Preferred Reporting Items for Systematic reviews and

58 Meta-Analyses

59 Statement (PRISMA) guidelines^[20] (**Table S1 in Supplemental Material**). All prospective studies,
60 including RCTs and observational studies (cohort and nested case-control studies), reporting data regarding
61 BMI and POAF were considered eligible for this systematic review. A systematic literature search was
62 conducted using the Cochrane Library, PubMed, and EMBASE databases through December 2019. Two
63 researchers (X.L. and Z-C.T.) independently performed the entire process of this exposure-effect
64 meta-analysis from the literature search and selection to the data analysis. **Table S2 in Supplemental**
65 **Material** provides a detailed description of the search strategy. All discrepancies were resolved through
66 discussion with each other or consultation with a 3rd reviewer (H-K). We used the method described by
67 Greenland and Longnecker^[21] to estimate the study-specific linear trends and 95% CIs from the natural logs
68 of the RRs and CIs across categories of BMI. The robust error meta-regression method was used to fit the
69 nonlinear exposure-effect meta-analysis of BMI and POAF^[22, 23]. All statistical analyses were performed
70 using Review Manager (RevMan) version 5.3 (The Cochrane Collaboration 2014; Nordic Cochrane Center
71 Copenhagen, Denmark) and Stata software (Version 14.0, Stata Corp LP, College Station, Texas, USA).
72 $P < 0.05$ was considered statistically significant. The full details of the literature search strategy, study
73 selection criteria, quality assessment, and statistical analysis are reported in the **Supplemental Methods in**
74 **the Supplemental Material**. Additionally, this study was registered with PROSPERO (international
75 prospective register of systematic reviews) under registration number CRD42019128770.

76

77 Results

78 Study selection

79 As shown in **Figure 1**, a total of 655 articles were initially identified, including 189 duplicates. After
80 screening the titles and abstracts, 55 articles remained for the detailed full-text screening. All articles
81 excluded after the full-text review are listed in **Table S3 in the Supplemental Material**. Finally, a total of
82 30 studies were included. Thirty-two studies were included in the analysis of BMI, and 2 studies were
83 included in the analysis of waist circumference. Seventeen articles reported AF after CABG, two articles
84 reported AF after valve surgery, and eight articles reported the total AF after various cardiac surgeries.

85 Study characteristics and quality

86 **Table 1** shows the detailed characteristics of the included studies. Overall, these studies were published
87 between 1996 and 2017. Among the included studies, the sample sizes ranged from 92 to 18,517 with a total
88 of 139,302 individuals. The mean age varied from 56 to 68 years. Fourteen studies^[9, 11, 13, 14, 16, 18, 24-31] were

39 from North America (the US and Canada), six studies^[15, 32-36] were from Europe, two studies^[10, 12] were from
30 Oceania, and two studies^[19, 37] were from Asia. Sixteen studies reported the BMI as a categorical variable,
31 eight studies reported the BMI as a continuous variable, and two articles reported the BMI as both a
32 categorical and continuous variable.

33 The overall reporting quality of the included studies was acceptable. All included studies obtained an
34 NOS \geq 6 points (**Table S4 in Supplemental Material**).

35 **Categorical analysis of the effect of BMI on POAF**

36 Fourteen studies grouped the BMI categories according to the World Health Organization criteria; however,
37 only six articles (seven cohorts)^[14, 16, 18, 19, 28, 30] reported using normal BMI as the reference group. As shown
38 in **Figure 2**, being underweight was not associated with an increased risk of POAF (RR: 1.44, 95% CI:
39 0.90–2.30; $I^2=29\%$). In contrast, obesity significantly increased the risk of POAF (RR: 1.39, 95% CI:
40 1.21–1.61; $I^2=41\%$). Interestingly, the risk of POAF seemed to gradually increase with the obesity stage (RR
41 of 1.29 for stage I obesity, 1.34 for stage II obesity, and 1.64 for stage III obesity).

42 **Dose-response analysis of the effect of BMI on POAF**

43 Thirty studies^[9-16, 18, 19, 24-30, 32, 33, 35-46] involving 32,546 cases/139,302 patients were included in the
44 dose-response analysis of BMI and POAF. The summary RR for a 5-unit increase in BMI was 1.09 (95% CI:
45 1.05-1.12) with each weight not exceeding 7%. Significant heterogeneity ($I^2=83\%$) (Figure 3) was found
46 across the studies. In the sensitivity analyses excluding the largest weighted study, the pooled RR ranged
47 from 1.09 (95% CI: 1.05-1.12) to 1.10 (95% CI: 1.06-1.14, $I^2=78\%$). Additionally, the pooled results were
48 not significantly changed when omitting one study at a time (**Figure S1 in the Supplemental Material**).
49 There was no evidence of nonlinearity ($P=0.44$) in the relationship between BMI and POAF (**Figure 4**). The
50 nonlinear curve showed that obesity, but not overweight, significantly increased the risk of POAF compared
51 with the patients with a normal BMI (**Figure 4**). **Table 3** displays the RR estimates from the nonlinear
52 exposure-effect analysis of selected BMI values; these values were derived from the nonlinear figures.

53 We further performed a subgroup analysis by type of cardiac operation. Seventeen articles^{[13-16, 18, 24, 25, 28, 29,}
54 ^{34, 35, 39, 42]} reported the association in coronary artery bypass graft (CABG), two articles^[19, 36] reported the
55 association in valve surgery, and seven articles^[9-13, 30, 31] reported the association in combined types of
56 cardiac surgery. The summary RRs for a 5-unit increment in BMI in the CABG group, valve surgery group,
57 and combined cardiac surgery group were 1.216 (95% CI: 1.21-1.219, $I^2=80\%$), 1.34 (95% CI: 0.81-2.22,
58 $I^2=84\%$), and 1.13 (95% CI: 1.06-1.20, $I^2=79\%$), respectively (**Table 2**). Moreover, there was some evidence
59 of a J-shaped relationship between POAF in the CABG group ($P_{\text{nonlinearity}}=0.0027$), with the risk of POAF

20 significantly increasing at a BMI of 30 and rising steeply at higher BMI levels. However, the curve was
21 much flatter in the combined cardiac surgery group (**Figure 5A-B**).

22 **Waist circumference obesity and POAF**

23 Two prospective studies^[14, 39] reported an analysis of the association between waist circumference and the
24 risk of AF after CABG and included 536 cases among 2,691 participants. Abdominal obesity was associated
25 with an increased risk of POAF (RR: 1.55, 95% CI: 1.26-1.90) with no evidence of heterogeneity ($I^2=0\%$)
26 (**Figure 6**).

27 **Subgroup and meta-regression analyses**

28 We conducted a subgroup analysis and a meta-regression by patient characteristics, such as age, region,
29 confounding factors and potential intermediate factors. We found some indication of a stronger relationship
30 between BMI and POAF among the studies with higher NOS scores (**Table 2**). As shown in **Table 2**, the
31 positive association between BMI and the risk of POAF persisted in almost all subgroup analyses by age,
32 region, sample size, study quality and adjustment for clinical confounding factors (e.g., diabetes,
33 hypertension, and age), and there was no evidence of heterogeneity among any of these subgroups in the
34 meta-regression analyses.

35 **Publication bias**

36 A possible lack of publication bias was indicated by Egger's and Begg's tests and the funnel plot (**Figure**
37 **S2-4 in the Supplemental Material**).

38 **Discussion**

39 This study presents the first dose-response analysis of the relationship between adiposity and the risk of
40 POAF. By combining 30 prospective studies involving 32,546 cases among 139,302 patients, we found a 9%
41 increased risk of POAF per a 5-unit increase in BMI. Both the categorical analysis and exposure-effect
42 model showed that obesity, but not being overweight or underweight, significantly increased the risk of
43 POAF. Consistently, in the subgroup analysis of CABG, a somewhat J-shaped association was found as the
44 risk significantly increased at a BMI of 30 and steeply rose at higher BMI levels. Finally, to the best of our
45 knowledge, we are also the first to confirm the association between abdominal adiposity and the risk of AF
46 in patients after cardiac surgery. These findings provide a compressive overview of the association between
47 adiposity and POAF.

48 Although the relationship between obesity and the risk of POAF is not new, the exposure-effect relationship
49 between BMI and POAF is still unclear, and the associations between overweight and the risk of POAF have

50 not been comprehensively assessed. Several prospective cohort studies^[47, 48] found that being overweight
51 significantly increased the risk of new onset AF; however, an independent positive relationship in POAF
52 was not confirmed in several large prospective long-term follow-up cohorts after adjusting for clinical
53 confounding variables^[49, 50] (e.g., the Framingham Heart Study). Consistently, our categorical analysis and
54 exposure-effect analysis uniformly showed that being overweight did not statically increase the risk of
55 POAF. This result was unsurprising. First, as described by a previously published meta-analysis^[51, 52], the
56 magnitude of the association between overall obesity and POAF is minimal, with an RR of 1.12-1.21.
57 Consistently, our results also showed that the summary RR per 5 units of BMI was 9%, further suggesting
58 that the real effect may even be very small in magnitude. Furthermore, the risk factors for POAF are
59 complicated and mainly include transient perioperative factors and a pre-existing condition^[53]. A large
60 cohort study^[54] found that the repeat recurrence of AF in cardiac surgery was higher than that in noncardiac
61 operations, supporting that the role of transient factors (e.g., cross-clamp time and intra-aortic balloon pump)
62 is more significant than that of a pre-existing condition (e.g., obesity or hypertension). Thus, we speculated
63 that the pathological condition caused by overweight might be compensable and insufficient to trigger
64 POAF independently.

55 The association between obesity and atrial fibrillation is not new in the field of cardiac surgery. However,
56 due to the limitations of univariate analyses and lack of evaluation of other clinical factors or potential
57 intermediates in previously published meta-analyses^[51, 52], the multitude of other factors and potential
58 intermediates (e.g., age, smoking, obstructive sleep apnea (OSA), COPD, and hypertension) that may also
59 affect the association between obesity and POAF incidence are still unclear. For example, the association of
60 hypertension with POAF was slightly stronger than that of obesity and was more common in cardiac surgery
61 patients with obesity. Stamou et al^[30] found that 87% of patients with obesity had preoperative hypertension
62 compared to 75% of patients without obesity in a cohort of 2,465 patients undergoing cardiac surgery.
63 Another important intermediate factor is lung disease. For example, a study reported that the incidence of
64 POAF increases with surgical invasiveness from an RR of 2.26 after mediastinal surgery to 8.90 in patients
65 undergoing pneumonectomy, suggesting that a strong association exists between lung disease and POAF^[55].
66 More consistently, several studies also showed that COPD was strongly linked to the incidence and
67 progression of AF^[56, 57]. Another study also showed that POAF was associated primarily with metabolic
68 syndrome (OR, 2.36; p=0.02) rather than BMI in a younger population^[16]. Our results showed that the
69 positive association persisted in almost all subgroup analyses by age, region, number of cases, and study
70 quality and after adjustment for these abovementioned factors, indicating an independent association

31 between obesity and the risk of POAF.

32 Notably, not all important clinical confounding factors or potential intermediates were assessed in the
33 present study. For example, OSA was common in patients with obesity and sharply increased with BMI. The
34 link between OSA and new onset incident AF has been confirmed^[58]. Various studies have found that OSA is
35 independently associated with an increased risk of AF following CABG^[59, 60]. Thus, some authors have
36 suggested that the positive correlation between obesity and POAF can be explained by OSA. Similarly, LAD
37 enlargement, which is another pathological condition that often coexisted with obesity, was also identified as
38 a crucial factor that independently contributes to the incidence of AF^[61]. However, few included studies
39 adjusted for OSA or enlarged LAD, and even fewer studies examined the direct link among OSA, LAD and
40 increased POAF. Therefore, the role of OSA and LAD in the relationship between BMI and POAF is still
41 unclear and needs to be further studied.

42 Notably, BMI is commonly used because it is simple to apply and inexpensive. However, the utility of BMI
43 in evaluating obesity has been criticized because it is indistinguishable from fat. In our results, body fat
44 measured by waist circumference increased the risk of POAF by 55%. This value was much greater than that
45 previously reported in the association between obesity and POAF and the value observed in our study.
46 Although the included study was limited, some authors have highlighted the importance of using multiple
47 measures, such as visceral obesity, in the risk assessment of POAF^[14].

48 Previous studies only analyzed the association between obesity and the POAF incidence in total cardiac
49 surgery^[51, 52]. The potential difference in the impact of obesity on cardiac surgery has not been examined. In
50 the present study, a significant difference was found in the cardiac surgery subgroup analysis (P of subgroup
51 difference=0.007). Furthermore, a nonlinear expose-effect relationship between BMI and POAF in CABG
52 was observed, with a sharper and steeper curve. In contrast, the exposure-effect curve of the combined types
53 of cardiac surgery subgroup (CABG and valve surgery) was much flatter. This result suggests that the curve
54 of POAF after valve surgery was much lower than that in the CABG group. This result was further
55 reinforced by the linear analysis, which showed a nonsignificant RR (P=0.25) per a 5-unit increase in BMI.
56 However, we should interpret these results with caution. The number of studies reporting obesity and POAF
57 in valve surgery was limited, and the pooled RR had substantial heterogeneity. Moreover, in another
58 cohort^[13] consisting of 16% valve surgery and 85% CABG, similar RRs were found across different obesity
59 groups in the analysis between total surgery and isolated CABG only. Therefore, the impact of obesity on
60 CABG and valve surgery is still unclear and should be further studied.

61 The effect of POAF on secondary outcomes was not assessed in the present study. Previous studies have

12 observed an “obesity paradox” in the outcomes of patients undergoing cardiac surgery, with individuals
13 affected by overweight and class I and II obesity having lower mortality^[30, 62]. However, recent studies using
14 dose-response methods and more compressive meta-analyses did not find any protective effect or higher
15 mortality among patients with extreme obesity^[63]. Consistently, another meta-analysis found higher major
16 morbidity and total hospital costs in patients with obesity undergoing cardiac surgery^[31]. Our results further
17 support this observation of a lack of an obesity paradox; we found that POAF increased with increasing BMI,
18 and morbidly increased POAF by 40% and 120% in the total cardiac surgery and CABG subgroups,
19 respectively. POAF independently predicted stroke^[64] and long-term mortality. Thus, regarding obesity,
20 especially morbid obesity, the risk of POAF should be carefully evaluated before cardiac surgery, and
21 specific interventions for the prevention of POAF should be considered. To date, purposeful weight loss has
22 been shown to reverse many changes in cardiac performance and morphology associated with obesity and
23 the incidence and burden of AF^[65, 66]. However, weight loss might not be as prevalent in the cardiac surgery
24 subgroup because most CABG procedures are emergent and unexpected or conducted in patients with poor
25 cardiac function (patients receiving valve replace). Alternatively, the administration of certain medications
26 was the most commonly used therapy for POAF prophylaxis. Among these medications, β -blockers,
27 amiodarone, and sotalol were proven to be effective against POAF after cardiac surgery. β -blockers were
28 uniformly recommended by the guidelines (class I recommendation)^[67-69]. According to a Cochrane review
29 meta-analysis, β -blockers significantly reduce the incidence of POAF by 67%^[70], and the initiation or
30 continuation of β -blockers is strongly recommended. Amiodarone is recommended for patients with
31 contraindications to β -blockers or (alone or in addition to β -blocker therapy) those who are at a high risk of
32 POAF. Sotalol is recommended for general POAF prophylaxis (AHA/ACC/HRS class IIb
33 recommendation)^[53]. An RCT found that sotalol was equally effective for prophylaxis of POAF as
34 amiodarone^[71]. Moreover, sotalol was even more effective than standard β -blocker therapy in patients
35 undergoing cardiac surgery^[71]. Notably, obesity often coexists with diabetes, an older age, congestive heart
36 failure, and other risk factors, and the risk of POAF might increase by multiple times as a result. Thus, a
37 combination of β -blockers and amiodarone can be considered for POAF prophylaxis in these high-risk
38 patients.

39 Finally, our findings have important clinical implications for the prevention of POAF as a previous
40 meta-analysis analyzed BMI but did not include other measures of fat in relation to the risk of POAF, and
41 prior studies did not assess the dose-response relationship between BMI and POAF in as great detail as the
42 present analysis. In addition, our results show that obesity was associated with an increased risk of POAF in

43 studies from Europe, North America, and Oceania, suggesting that the prevention of obesity is essential
44 across populations. The current analysis suggests that both general and abdominal adiposity (waist
45 circumference) measures are related to an increased risk of POAF and that being relatively slim, as assessed
46 by BMI and other adiposity measures, may confer the lowest risk of POAF.

47 **Strengths and limitations**

48 Our meta-analysis has several strengths. First, all included studies were designed as prospective studies,
49 avoiding recall bias and reducing the possibility of selection bias. Second, this meta-analysis included a
50 large number of cohort studies (30 studies, N=139,302) with BMI reported as either a categorical or
51 continuous variable, providing strong statistical power to detect moderate associations. The detailed
52 exposure–effect analyses clarified the shape of the exposure–effect relationship. Third, the positive
53 association between BMI and POAF persisted in different subgroups (e.g., age or region) and after adjusting
54 for confounding factors, confirming the robustness of our findings.

55 Our study inevitably has several limitations. First, this meta-analysis included observational studies, and bias
56 was not entirely avoided. Measured and unmeasured confounding variables might have influenced our
57 results. However, this limitation cannot be mitigated by the large number of studies and adjustments for
58 coexistent confounding factors in all included studies. Second, significant heterogeneity ($I^2=83\%$) was
59 observed across the included studies, which might have been derived from between-study differences, such
60 as differences in study design, basic patient characteristics, and analytical strategies. Third, we did not
61 analyze the long-term POAF incidence since most studies only reported the incidence of POAF during the
62 length of hospitalization. However, most POAF has a peak incidence between days 2 and 4 after surgery^[53],
63 especially during the first postoperative week. Fourth, we did not assess the effect of BMI on secondary
64 outcomes in patients undergoing a cardiac operation, such as stroke and death, which have been thoroughly
65 studied in previous studies^[31, 63].

66 In conclusion, based on the current evidence, our findings are the first to show that obesity and abdominal
67 adiposity are independently associated with an increased risk of POAF. Being underweight or overweight
68 might not significantly increase the POAF risk. The magnitude of the effect of obesity on AF in patients
69 undergoing valve surgery might be small and needs to be further confirmed.

70 **Sources of funding**

71 This work was supported in part by the National Natural Science Foundation of China (No. 81760050,
72 81760048) and the Jiangxi Provincial Natural Science Foundation for Youth Scientific Research (No.

73 20192ACBL21037).

74 **Conflicts of interest**

75 All authors declare that they have no conflicts of interest.

76 **Author contributions**

77 X.L. was responsible for the entire project and revised the draft. X.L. and M-L.L. performed the systematic
78 literature review and drafted the first version of the manuscript. All authors participated in the interpretation
79 of the results and prepared the final version of the manuscript.

30 **Figure legends**

31 **Figure 1. Overview of the research strategy. RR, risk ratio.**

32 **Figure 2. Forest plot of the categorical analysis of the impact of body mass index on POAF.**

33 POAF: postoperative atrial fibrillation after cardiac surgery

34 **Figure 3. Forest plot of the association between body mass index and POAF and exposure-effect analysis,
35 per 5 units.**

36 POAF: postoperative atrial fibrillation after cardiac surgery

37 **Figure 4. Nonlinear exposure-effect analysis of body mass index and POAF. The solid and dashed lines
38 represent the estimated relative risk and the 95% confidence interval, respectively.**

39 POAF: postoperative atrial fibrillation after cardiac surgery

40 **Figure 5. Body mass index and POAF stratified by types of cardiac surgery and nonlinear
31 exposure-effect analysis. The solid and dashed lines represent the estimated relative risk and the 95%
32 confidence interval, respectively. A: coronary artery bypass graft; B: combined cardiac surgery.**

33 POAF: postoperative atrial fibrillation after cardiac surgery

34 **Figure 6. Forest plot of the impact of waist obesity on POAF.**

35 POAF: postoperative atrial fibrillation after cardiac surgery

36

37 **Reference**

38 [1] Vogli RD, Kouvonen A, Elovainio M, Marmot M. Economic globalization, inequality and body mass index: a cross-national
39 analysis of 127 countries. *Critical Public Health*. 2014;24:7-21.

40 [2] Jayedi A, Rashidy-Pour A, Khorshidi M, Shab-Bidar S. Body mass index, abdominal adiposity, weight gain and risk of
41 developing hypertension: a systematic review and dose–response meta-analysis of more than 2.3 million participants. *Obesity*

- 32 reviews. 2018;19:654-67.
- 33 [3] Milajerdi A, Djafarian K, Shab-Bidar S, Speakman J. Pre-and post-diagnosis body mass index and heart failure mortality: a
34 dose–response meta-analysis of observational studies reveals greater risk of being underweight than being overweight. *Obesity*
35 reviews. 2019;20:252-61.
- 36 [4] Aune D, Sen A, Prasad M, Norat T, Janszky I, Tonstad S, et al. BMI and all cause mortality: systematic review and non-linear
37 dose-response meta-analysis of 230 cohort studies with 3.74 million deaths among 30.3 million participants. *BMJ*.
38 2016;353:i2156.
- 39 [5] Guh DP, Zhang W, Bansback N, Amarsi Z, Birmingham CL, Anis AH. The incidence of co-morbidities related to obesity and
40 overweight: a systematic review and meta-analysis. *BMC public health*. 2009;9:88.
- 41 [6] Rahmani J, Kord-Varkaneh H, Hekmatdoost A, Thompson J, Clark C, Salehisahlabadi A, et al. Body mass index and risk of
42 inflammatory bowel disease: A systematic review and dose-response meta-analysis of cohort studies of over a million
43 participants. *Obesity Reviews*. 2019.
- 44 [7] Hennessy M, Heary C, Laws R, Rhoon L, Toomey E, Wolstenholme H, et al. The effectiveness of health professional-delivered
45 interventions during the first 1000 days to prevent overweight/obesity in children: A systematic review. *Obesity Reviews*.
46 2019;20:1691-707.
- 47 [8] Mitchell LB, Committee CAFG. Canadian Cardiovascular Society atrial fibrillation guidelines 2010: prevention and treatment of
48 atrial fibrillation following cardiac surgery. *Canadian Journal of Cardiology*. 2011;27:91-7.
- 49 [9] Engelman DT, Adams DH, Byrne JG, Aranki SF, Collins JJ, Couper GS, et al. Impact of body mass index and albumin on
50 morbidity and mortality after cardiac surgery. *The Journal of Thoracic and Cardiovascular Surgery*. 1999;118:866-73.
- 51 [10] Bramer S, van Straten AH, Soliman Hamad MA, Berrekouw E, van den Broek KC, Maessen JG. Body mass index predicts
52 new-onset atrial fibrillation after cardiac surgery. *Eur J Cardiothorac Surg*. 2011;40:1185-90.
- 53 [11] Melduni RM, Suri RM, Seward JB, Bailey KR, Ammash NM, Oh JK, et al. Diastolic dysfunction in patients undergoing cardiac
54 surgery: a pathophysiological mechanism underlying the initiation of new-onset post-operative atrial fibrillation. *J Am Coll*
55 *Cardiol*. 2011;58:953-61.
- 56 [12] Yap CH, Zimmet A, Mohajeri M, Yui M. Effect of obesity on early morbidity and mortality following cardiac surgery. *Heart*
57 *Lung Circ*. 2007;16:31-6.
- 58 [13] Zacharias A, Schwann TA, Riordan CJ, Durham SJ, Shah AS, Habib RH. Obesity and risk of new-onset atrial fibrillation after
59 cardiac surgery. *Circulation*. 2005;112:3247-55.
- 60 [14] Girerd N, Pibarot P, Fournier D, Daleau P, Voisine P, O'Hara G, et al. Middle-aged men with increased waist circumference and
61 elevated C-reactive protein level are at higher risk for postoperative atrial fibrillation following coronary artery bypass grafting
62 surgery. *Eur Heart J*. 2009;30:1270-8.
- 63 [15] Reeves BC, Ascione R, Chamberlain MH, Angelini GD. Effect of body mass index on early outcomes in patients undergoing
64 coronary artery bypass surgery. *Journal of the American College of Cardiology*. 2003;42:668-76.
- 65 [16] Echahidi N, Mohty D, Pibarot P, Despres JP, O'Hara G, Champagne J, et al. Obesity and metabolic syndrome are independent
66 risk factors for atrial fibrillation after coronary artery bypass graft surgery. *Circulation*. 2007;116:1213-9.
- 67 [17] Bennette C, Vickers A. Against quantiles: Categorization of continuous variables in epidemiologic research, and its
68 discontents. *BMC Medical Research Methodology*,12,1(2012-02-29). 2012;12:21.
- 69 [18] Sun X, Boyce SW, Hill PC, Bafi AS, Xue Z, Lindsay J, et al. Association of body mass index with new-onset atrial fibrillation
70 after coronary artery bypass grafting operations. *Ann Thorac Surg*. 2011;91:1852-8.
- 71 [19] Gao M, Sun J, Young N, Boyd D, Atkins Z, Li Z, et al. Impact of Body Mass Index on Outcomes in Cardiac Surgery. *J*
72 *Cardiothorac Vasc Anesth*. 2016;30:1308-16.
- 73 [20] Moher D, Liberati A, Tetzlaff J, Altman DG. The PRISMA Group. Preferred reporting items for systematic reviews and

- 44 meta-analyses: the PRISMA Statement. *Open Medicine*. 2009;3:e123-30.
- 45 [21] Greenland S. Quantitative methods in the review of epidemiologic literature. *Epidemiologic Reviews*. 1987;9:1-30.
- 46 [22] Doi SAR, Sar D. The robust error meta-regression method for dose-response meta-analysis.
- 47 [23] Zhang C, Jia P, Yu L, Xu C. Introduction to methodology of dose-response meta-analysis for binary outcome: With application
48 on software. *J Evid Based Med*. 2018.
- 49 [24] Alam M, Siddiqui S, Lee V-V, Elayda MA, Nambi V, Yang EY, et al. Isolated Coronary Artery Bypass Grafting in Obese
50 Individuals. *Circulation Journal*. 2011;75:1378-85.
- 51 [25] Efirid JT, Gudimella P, O'Neal WT, Griffin WF, Landrine H, Kindell LC, et al. Comparison of Risk of Atrial Fibrillation in Black
52 Versus White Patients After Coronary Artery Bypass Grafting. *Am J Cardiol*. 2016;117:1095-100.
- 53 [26] El-Chami MF, Kilgo PD, Elfstrom KM, Halkos M, Thourani V, Lattouf OM, et al. Prediction of new onset atrial fibrillation after
54 cardiac revascularization surgery. *Am J Cardiol*. 2012;110:649-54.
- 55 [27] Moulton MJ, Creswell LL, Mackey ME, Cox JL, Rosenbloom M. Obesity is not a risk factor for significant adverse outcomes
56 after cardiac surgery. *Circulation*. 1996;94:1187.
- 57 [28] Omer S, Cornwell LD, Bakshi A, Rachlin E, Preventza O, Rosengart TK, et al. Incidence, Predictors, and Impact of
58 Postoperative Atrial Fibrillation after Coronary Artery Bypass Grafting in Military Veterans. *Tex Heart Inst J*. 2016;43:397-403.
- 59 [29] Pan W, Hindler K, Lee VV, Vaughn WK, Collard CD. Obesity in diabetic patients undergoing coronary artery bypass graft
60 surgery is associated with increased postoperative morbidity. *Anesthesiology*. 2006;104:441-7.
- 61 [30] Stamou SC, Nussbaum M, Stiegel RM, Reames MK, Skipper ER, Robicsek F, et al. Effect of body mass index on outcomes after
62 cardiac surgery: is there an obesity paradox? *Ann Thorac Surg*. 2011;91:42-7.
- 63 [31] Ghanta RK, LaPar DJ, Zhang Q, Devarkonda V, Isbell JM, Yarboro LT, et al. Obesity Increases Risk-Adjusted Morbidity,
64 Mortality, and Cost Following Cardiac Surgery. *J Am Heart Assoc*. 2017;6.
- 65 [32] Brandt M, Harder K, Walluscheck KP, Schöttler J, Rahimi A, Möller F, et al. Severe obesity does not adversely affect
66 perioperative mortality and morbidity in coronary artery bypass surgery. *European Journal of Cardio-Thoracic Surgery*.
67 2001;19:662-6.
- 68 [33] Hakala T, Vanninen E, Hedman A, Hippeläinen M. Analysis of Heart Rate Variability does not Identify the Patients at Risk of
69 Atrial Fibrillation after Coronary Artery Bypass Grafting. *Scandinavian Cardiovascular Journal*. 2009;36:167-71.
- 70 [34] Kuduvali M, Grayson A, Oo A, Fabri B, Rashid A. Risk of morbidity and in-hospital mortality in obese patients undergoing
71 coronary artery bypass surgery. *European Journal of Cardio-Thoracic Surgery*. 2002;22:787-93.
- 72 [35] Perrier S, Meyer N, Hoang Minh T, Announe T, Bentz J, Billaud P, et al. Predictors of Atrial Fibrillation After Coronary Artery
73 Bypass Grafting: A Bayesian Analysis. *The Annals of Thoracic Surgery*. 2017;103:92-7.
- 74 [36] Tosello F, Florens E, Caruba T, Lebeller C, Mimoun L, Milan A, et al. Atrial fibrillation at mid-term after bioprosthetic aortic
75 valve replacement - implications for anti-thrombotic therapy. *Circ J*. 2015;79:70-6.
- 76 [37] Erdil N, Gedik E, Donmez K, Erdil F, Aldemir M, Battaloglu B, et al. Predictors of Postoperative Atrial Fibrillation after
77 On-Pump Coronary Artery Bypass Grafting: Is Duration of Mechanical Ventilation Time a Risk Factor? *Annals of Thoracic and*
78 *Cardiovascular Surgery*. 2014;20:135-42.
- 79 [38] Banach M, Goch A, Misztal M, Rysz J, Jaszewski R, Goch JH. Predictors of paroxysmal atrial fibrillation in patients undergoing
80 aortic valve replacement. *J Thorac Cardiovasc Surg*. 2007;134:1569-76.
- 81 [39] Ivanovic B, Tadic M, Bradic Z, Zivkovic N, Stanisavljevic D, Celic V. The influence of the metabolic syndrome on atrial
82 fibrillation occurrence and outcome after coronary bypass surgery: a 3-year follow-up study. *Thorac Cardiovasc Surg*.
83 2014;62:561-8.
- 84 [40] Jidéus L, Blomström P, Nilsson L, Stridsberg M, Hansell P, Blomström-Lundqvist C. Tachyarrhythmias and triggering factors for
85 atrial fibrillation after coronary artery bypass operations. *The Annals of Thoracic Surgery*. 2000;69:1064-9.
- 86 [41] Kinoshita T, Asai T, Suzuki T, Kambara A, Matsubayashi K. Preoperative hemoglobin A1c predicts atrial fibrillation after
87 off-pump coronary bypass surgery. *Eur J Cardiothorac Surg*. 2012;41:102-7.
- 88 [42] Tadic M, Ivanovic B, Zivkovic N. Predictors of atrial fibrillation following coronary artery bypass surgery. *Medical Science*
89 *Monitor*. 2011;17:CR48-CR55.
- 90 [43] Habib RH, Zacharias A, Schwann TA, Riordan CJ, Durham SJ, Shah A. Effects of obesity and small body size on operative and

- 31 long-term outcomes of coronary artery bypass surgery: a propensity-matched analysis. *Ann Thorac Surg*. 2005;79:1976-86.
- 32 [44] Hravnak M, Hoffman LA, Saul MI, Zullo TG, Whitman GR, Griffith BP. Predictors and impact of atrial fibrillation after isolated
33 coronary artery bypass grafting. *Critical Care Medicine*. 2002;30:330.
- 34 [45] Kitahara H, Patel B, McCrorey M, Nisivaco S, Balkhy HH. Morbid Obesity Does not Increase Morbidity or Mortality in Robotic
35 Cardiac Surgery. *Innovations (Phila)*. 2017;12:434-9.
- 36 [46] Orhan G, Bicer Y, Aka SA, Sargin M, Simsek S, Senay S, et al. Coronary artery bypass graft operations can be performed safely
37 in obese patients. *Eur J Cardiothorac Surg*. 2004;25:212-7.
- 38 [47] Frost L, Hune LJ, Vestergaard P. Overweight and obesity as risk factors for atrial fibrillation or flutter: the Danish Diet, Cancer,
39 and Health Study. *The American journal of medicine*. 2005;118:489-95.
- 40 [48] Wilhelmssen L, Rosengren A, Lappas G. Hospitalizations for atrial fibrillation in the general male population: morbidity and
41 risk factors. *Journal of Internal Medicine*. 2001;5:382-9.
- 42 [49] Wang TJ, Parise H, Levy D, D'Agostino RB, Wolf PA, Vasan RS, et al. Obesity and the risk of new-onset atrial fibrillation. *Jama*.
43 2004;292:2471-7.
- 44 [50] Murphy N, MacIntyre K, Stewart S, Hart C, Hole D, McMurray J. Long-term cardiovascular consequences of obesity: 20-year
45 follow-up of more than 15 000 middle-aged men and women (the Renfrew-Paisley study). *European heart journal*.
46 2006;27:96-106.
- 47 [51] Hernandez AV, Kaw R, Pasupuleti V, Bina P, Ioannidis JP, Bueno H, et al. Association between obesity and postoperative atrial
48 fibrillation in patients undergoing cardiac operations: a systematic review and meta-analysis. *Ann Thorac Surg*. 2013;96:1104-16.
- 49 [52] Phan K, Khuong JN, Xu J, Kanagaratnam A, Yan TD. Obesity and postoperative atrial fibrillation in patients undergoing cardiac
50 surgery: Systematic review and meta-analysis. *International Journal of Cardiology*. 2016;217:49-57.
- 51 [53] Dobrev D, Aguilar M, Heijman J, Guichard JB, Nattel S. Postoperative atrial fibrillation: mechanisms, manifestations and
52 management. *Nat Rev Cardiol*. 2019;16:417-36.
- 53 [54] Lubitz SA, Yin X, Rienstra M, Schnabel RB, Walkey AJ, Magnani JW, et al. Long-term outcomes of secondary atrial fibrillation
54 in the community: the Framingham Heart Study. *Circulation*. 2015;131:1648-55.
- 55 [55] Vaporciyan AA, Correa AM, Rice DC, Roth JA, Smythe W, Swisher SG, et al. Risk factors associated with atrial fibrillation after
56 noncardiac thoracic surgery: analysis of 2588 patients. *The Journal of thoracic and cardiovascular surgery*. 2004;127:779-86.
- 57 [56] Grymonprez M, Vakaet V, Kavousi M, Stricker BH, Ikram MA, Heeringa J, et al. Chronic obstructive pulmonary disease and
58 the development of atrial fibrillation. *International Journal of Cardiology*. 2019;276:118-24.
- 59 [57] Durheim MT, Holmes DN, Blanco RG, Allen LA, Chan PS, Freeman JV, et al. Characteristics and outcomes of adults with
60 chronic obstructive pulmonary disease and atrial fibrillation. *Heart*. 2018;104:1850-8.
- 61 [58] Cadby G, McArdle N, Briffa T, Hillman DR, Simpson L, Knuihan M, et al. Severity of OSA is an independent predictor of
62 incident atrial fibrillation hospitalization in a large sleep-clinic cohort. *Chest*. 2015;148:945-52.
- 63 [59] Qaddoura A, Kabali C, Drew D, van Oosten EM, Michael KA, Redfearn DP, et al. Obstructive sleep apnea as a predictor of
64 atrial fibrillation after coronary artery bypass grafting: a systematic review and meta-analysis. *Canadian Journal of Cardiology*.
65 2014;30:1516-22.
- 66 [60] van Oosten EM, Hamilton A, Petsikas D, Payne D, Redfearn DP, Zhang S, et al. Effect of preoperative obstructive sleep apnea
67 on the frequency of atrial fibrillation after coronary artery bypass grafting. *The American journal of cardiology*. 2014;113:919-23.
- 68 [61] Tsang TS, Barnes ME, Bailey KR, Leibson CL, Montgomery SC, Takemoto Y, et al. Left atrial volume: important risk marker of
69 incident atrial fibrillation in 1655 older men and women. *Mayo Clinic Proceedings: Elsevier*; 2001. p. 467-75.
- 70 [62] Mariscalco G, Wozniak MJ, Dawson AG, Serraino GF, Porter R, Nath M, et al. Body mass index and mortality among adults
71 undergoing cardiac surgery: a nationwide study with a systematic review and meta-analysis. *Circulation*. 2017;135:850-63.
- 72 [63] Liu X, Xie L, Zhu W, Zhou Y. Association of body mass index and all-cause mortality in patients after cardiac surgery: A
73 dose-response meta-analysis. *Nutrition*. 2020;72:110696.
- 74 [64] Lin M-H, Kamel H, Singer DE, Wu Y-L, Lee M, Ovbiagele B. Perioperative/Postoperative Atrial Fibrillation and Risk of
75 Subsequent Stroke and/or Mortality: A Meta-Analysis. *Stroke*. 2019;50:1364-71.
- 76 [65] Middeldorp ME, Pathak RK, Meredith M, Mehta AB, Elliott AD, Mahajan R, et al. PREVENTion and regReSSive Effect of
77 weight-loss and risk factor modification on Atrial Fibrillation: the REVERSE-AF study. *Europace*. 2018;20:1929-35.

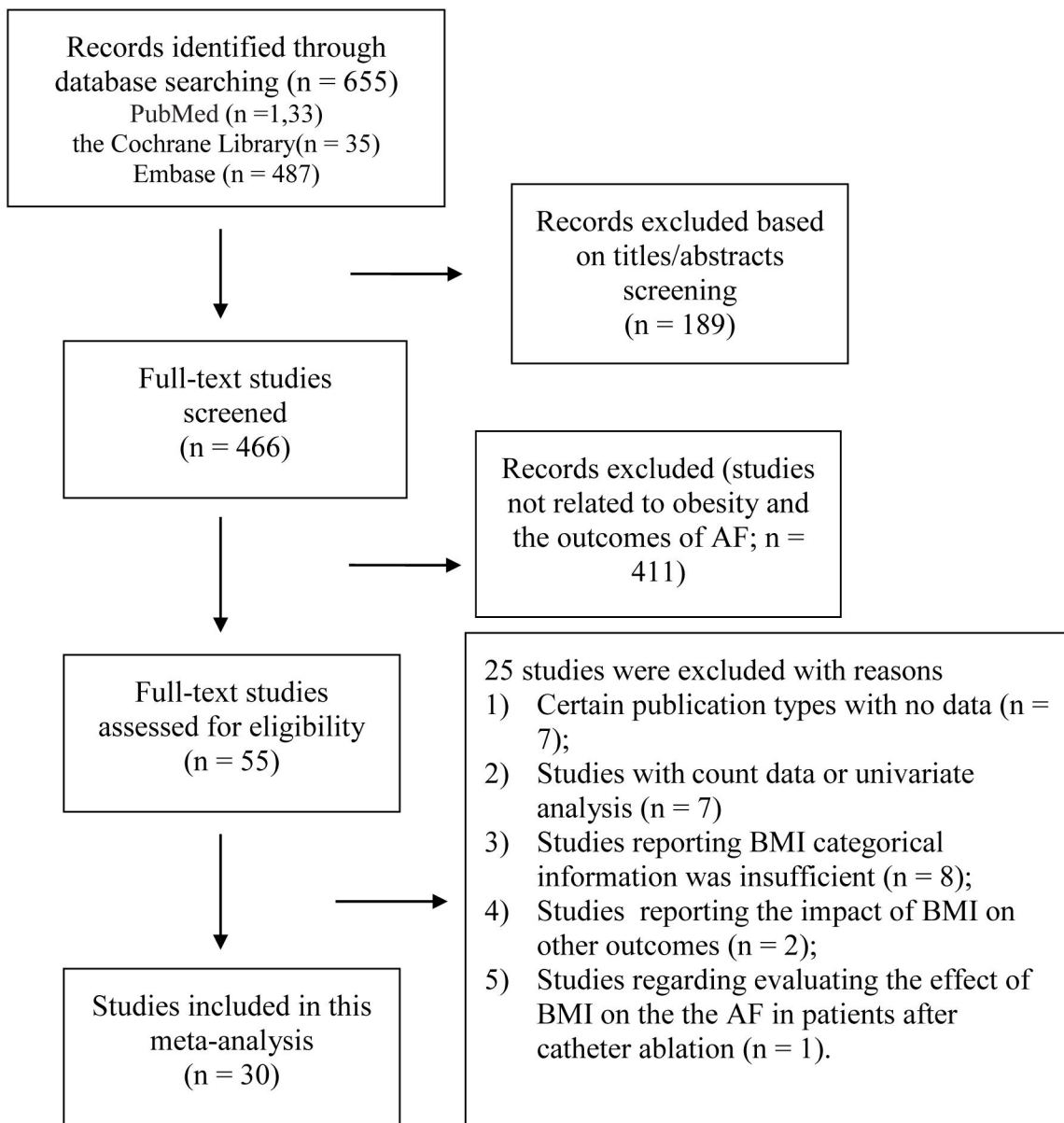
- 38 [66] Lavie CJ, Pandey A, Lau DH, Alpert MA, Sanders P. Obesity and Atrial Fibrillation Prevalence, Pathogenesis, and Prognosis:
39 Effects of Weight Loss and Exercise. *J Am Coll Cardiol*. 2017;70:2022-35.
- 40 [67] Andrade JG, Verma A, Mitchell LB, Parkash R, Leblanc K, Atzema C, et al. 2018 focused update of the Canadian
41 Cardiovascular Society guidelines for the management of atrial fibrillation. *Canadian Journal of Cardiology*. 2018;34:1371-92.
- 42 [68] Fuster V. American College of Cardiology/American Heart Association Task Force on Practice Guidelines; European Society of
43 Cardiology Committee for Practice Guidelines; European Heart Rhythm Association; Heart Rhythm Society. ACC/AHA/ESC 2006
44 guidelines for the management of patients with atrial fibrillation: a report of the American College of Cardiology/American Heart
45 Association Task Force on practice guidelines and the European Society of Cardiology Committee for practice guidelines (writing
46 committee to revise the 2001 guidelines for the management of patients with atrial fibrillation): developed in collaboration with
47 the European Heart Rhythm Association and the Heart Rhythm Society. *Circulation*. 2006;114:e257-e354.
- 48 [69] Kirchhof P, Benussi S, Kotecha D, Ahlsson A, Atar D, Casadei B, et al. 2016 ESC Guidelines for the management of atrial
49 fibrillation developed in collaboration with EACTS. *Eur Heart J*. 2016;37:2893-962.
- 50 [70] Arsenault KA, Yusuf AM, Crystal E, Healey JS, Morillo CA, Nair GM, et al. Interventions for preventing post-operative atrial
51 fibrillation in patients undergoing heart surgery. *Cochrane Database of Systematic Reviews*. 2013.
- 52 [71] Mooss AN, Wurdeman RL, Sugimoto JT, Packard KA, Hilleman DE, Lenz TL, et al. Amiodarone versus sotalol for the treatment
53 of atrial fibrillation after open heart surgery: the Reduction in Postoperative Cardiovascular Arrhythmic Events (REDUCE) trial.
54 *American Heart Journal*. 2004;148:641-8.
- 55

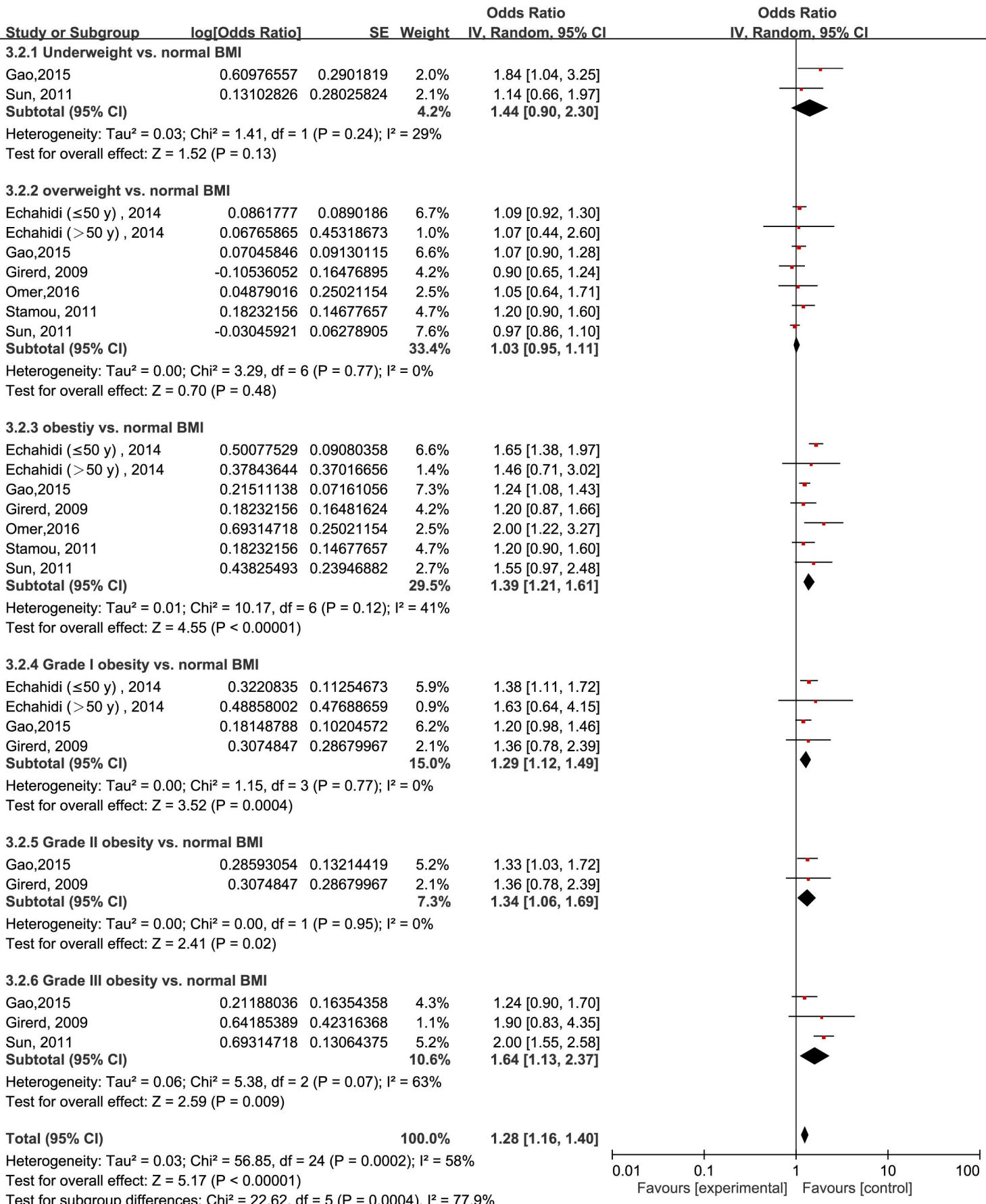
Identification

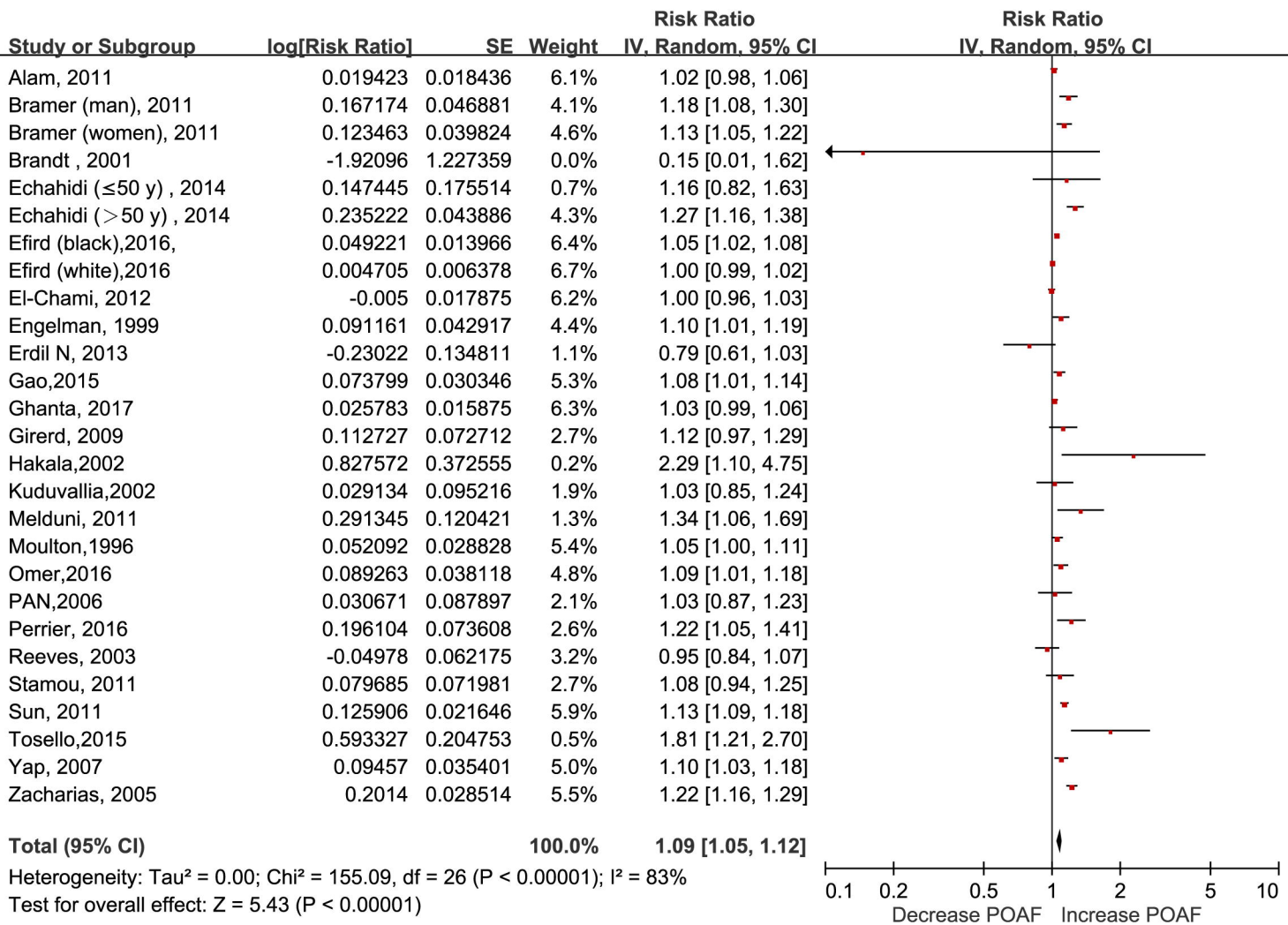
Screening

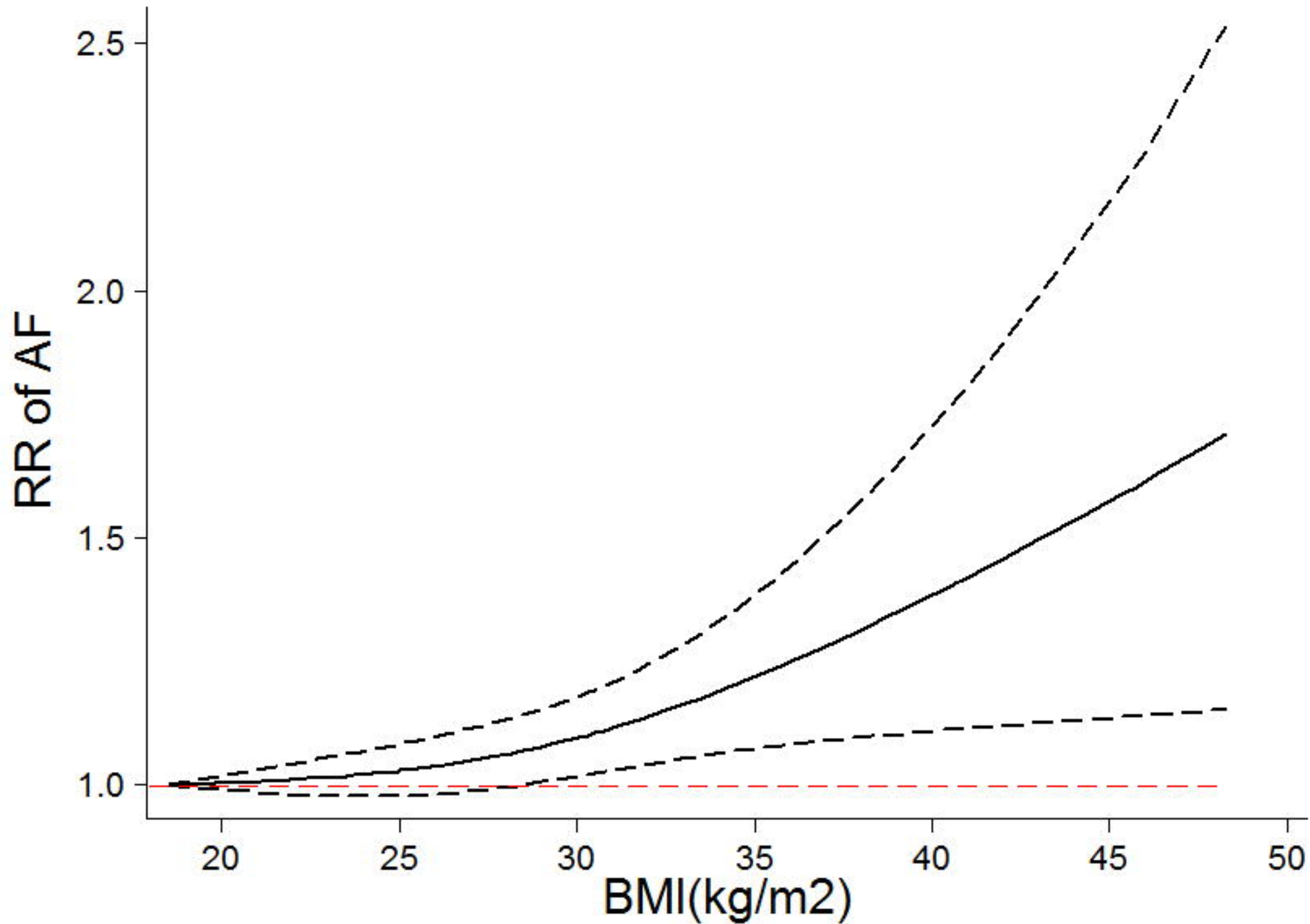
Eligibility

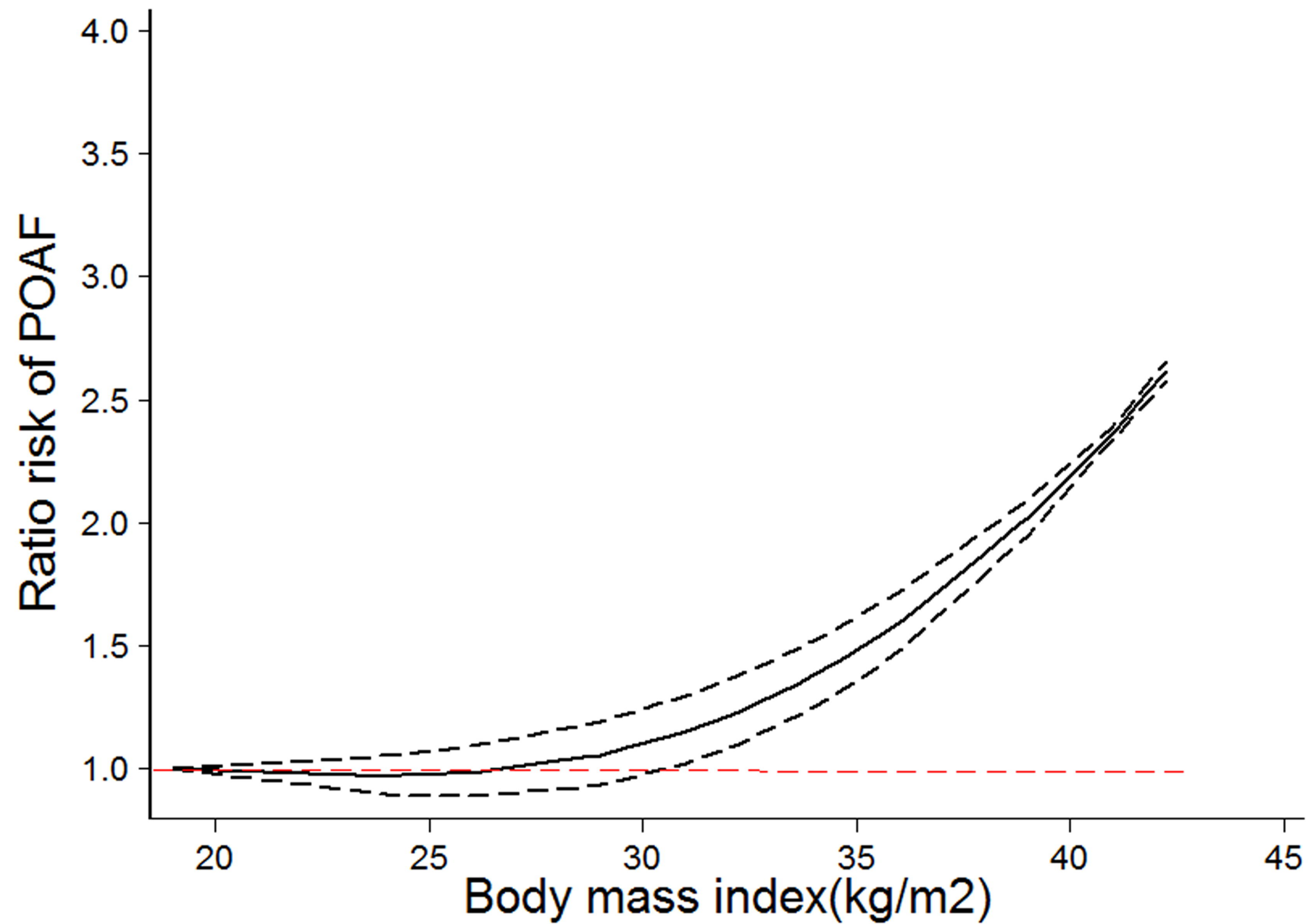
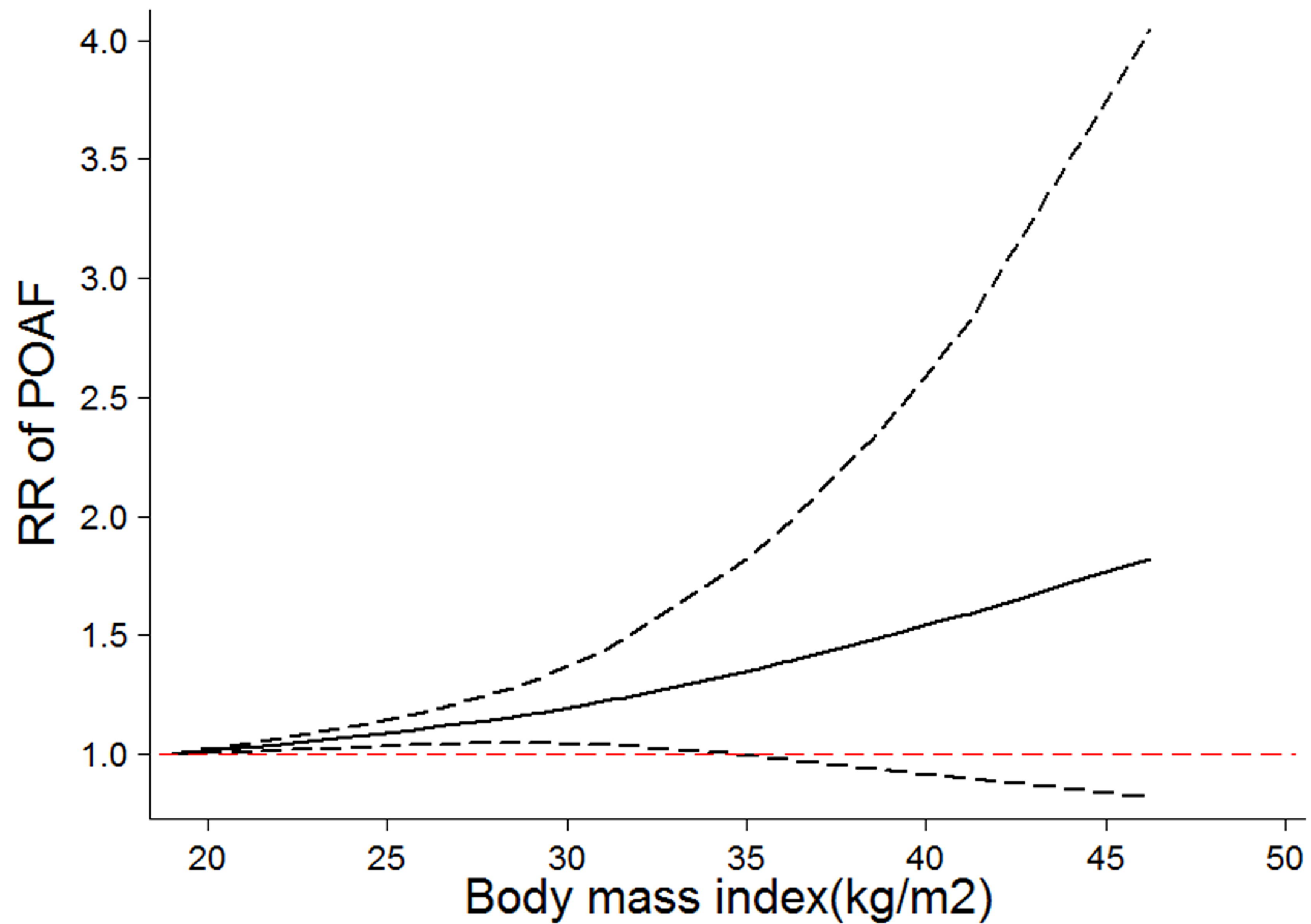
Included









A**B**

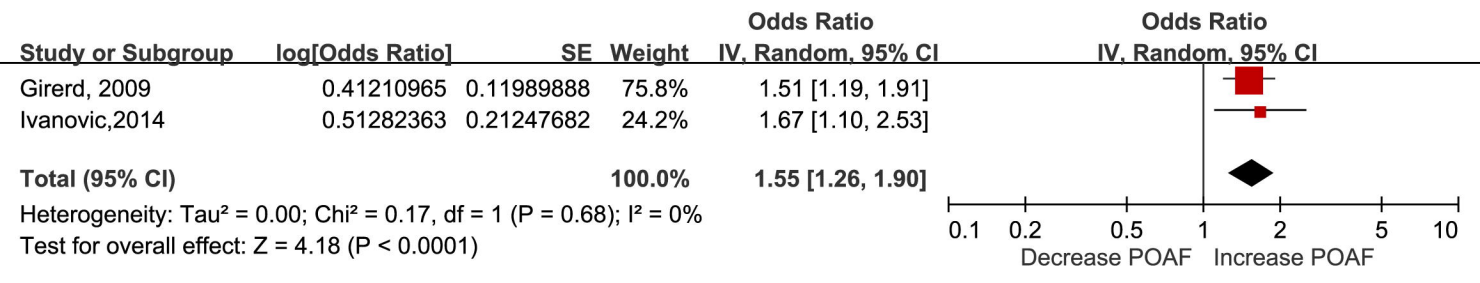


Table 1. Basic characteristics of the 30 articles included in the meta-analysis.

Author, publication year, country	Source of participants	Cases/N	Mean age (years), male (%)	Study design	Method of AF Detection	BMI Data Reported	Type of operation	Adjustment for confounders
Alam, 2011, USA	St. Luke's Episcopal Hospital/Texas Heart Institute	2867/13115	63.3, 54.4	Retrospective cohort study	ECG, treating physician	< 30 ≥ 30	CABG	Age, sex, preoperative morbidity, extent of CAD, No. of CABG, use of internal mammary artery, total circulatory bypass time, ACT.
Bramer, 2011, Netherlands	Catharina Hospital	2517/9348	64.2, 72.6	Prospective cohort study	ECG,	Continuous variable	CABG or valve surgery	Age, BSA, COPD, PVD, prior stroke, prior MI, LVEF, creatinine, type of procedure, ECC duration, transfusion of RBCs, FFP and platelets, and reoperation for bleeding.
Brandt, 2001, Germany	University Hospital Kiel	207/500	63, 82	Retrospective cohort study	NA	<30 ≥30	CABG	Sex, history of prior MI, COPD, previous stroke, duration of CPB, ACT and number of distal anastomoses performed.
Banach (aortic stenosis), 2007, Poland	Department of Cardiac Surgery in Lodz	62/150	63.3, 48.7	Retrospective cohort study	ECG,	≤ 21 ≥ 30	valve surgery	Age, BMI, pre-operative and post-operative LVEF, mitral regurgitation.
Engelman, 1999, USA	Brigham and Women's Hospital	1518/5168	67, 68	Retrospective cohort study	NA	< 20 20- 30 > 30	CABG or valve surgery	Age, sex, EF, NYHA functional class, previous cardiac operation, pre-operative diabetes, peripheral and cerebral vascular disease, hypertension, renal failure, CHF, MI, COPD, smoking, urgency of operation, use of an ITA, and type of operation.

Echahidi, 2014, Canada	The Quebec Heart Institute	1370/5086	64.1, 76.5	Retrospective cohort study	ECG	< 25 25- 30 30- 35 ≥ 35 Continuous variable	CABG	Age, gender, BMI, DM, left main coronary stenosis, preoperative medication with β-blockers, and ACT.
El-Chami, 2012, USA	Emory University Hospital or Emory Crawford Long Hospital	3486/18517	62.5, 71.7	Retrospective cohort study	NA	NA	CABG	Age, race, gender, height, weight, BMI, body surface area, last creatinine level, angina, left main CAD, immunosuppressive therapy, preoperative insertion of an intra-aortic balloon pump, number of diseased vessels and preexisting medical conditions. Age, additive EuroSCORE score, and prolonged ventilation.
Erdil N, 2013, Turkey	Inonu University, School of Medicine	129/1040	60.2, 75.8	Retrospective cohort study	ECG, physician assessment	Continuous variable	CABG	Age, sex, DM, unstable heart failure, hypertension, PAD, three-vessel disease.
Efird (Black), 2016, USA	East Carolina Heart Institute	376/2329	NA, 58.1	Retrospective cohort study	Medical record	< 18.5 18.5- 25 25- 30 30- 35 35- 40 ≥ 40	CABG	Age, sex, DM, Unstable heart failure, hypertension, PAD, Three-vessel disease.
Efird (White), 2016, USA	East Carolina Heart Institute	2627/11265	NA, 72.8	Retrospective cohort study	Medical record	< 18.5 18.5- 25 25- 30 30- 35 35- 40 ≥ 40	CABG	Age, sex, DM, Unstable heart failure, hypertension, PAD, Three-vessel disease.

Gao, 2016, China	First Affiliated Hospital of Nanjing Medical University	1183/4740	63.6, 68.7	Retrospective cohort study	NA	< 18.5 18.5- 25 25- 30 30- 35 35- 40 ≥ 40	Valve surgery	Age, gender, surgery type, family history of CAD, diabetes, hypertension, heart failure and lipid lowering medication.
Ghanta, 2017, USA	Regional Society of Thoracic Surgeons certified database	3052/13637	65.6, 70.7	Retrospective cohort study	Medical records	18.5- 30 30 ≤ BMI ≤ 40 >40	CABG and/or valve surgery	STS PROM, age, sex, presence of hypertension, DM, renal failure, and heart failure.
Girerd, 2009, Canada	Quebec Heart Institute	433/2214	56.2, 100	Nested case- control	ECG	< 25 25- 30 30- 35 35- 40 ≥ 40	CABG	Waist circumference and age.
Gürbüz, 2014, Turkey	Medicana International Ankara Hospital	139/790	62, 77.8	Retrospective cohort study	ECG	≤ 30 > 30	CABG	Age, sex, DM, hypertension, hyperlipidemia, preoperative arrhythmia and atrial fibrillation, PAD, history of cerebrovascular disease, preoperative echocardiography data, history of clopidogrel use, operation type, CPB and cross clamp times, number of grafts, extubation time, intensive care unit and hospital length of stay times, amount of drainage, number of used blood and blood products, postoperative creatinine and creatinine kinase levels, occurrence of postoperative arrhythmia and

								stroke.
Hakala, 2002, Finland	Kuopio University Hospital	30/92	61.7, 76	Prospective cohort study	ECG	Continuous variable	CABG	Age, preoperative haemoglobin, diabetes, HRV measurements.
Ivanovic (MS), 2014, Serbia	Clinical Center of Serbia	103/477	60, 71	Retrospective cohort study	ECG	≤ 30 > 30	CABG	Age, gender.
Kitahara, 2017, USA	University of Chicago Medicine,	119/486	65/33.7	Retrospective cohort study	NA	<24.9 25-29.9 30-34.9 ≥ 35	cardiac surgery	Sex, height, weight, dyslipidemia, hypertension, DM, chronic renal failure, renal failure on dialysis, COPD, EF.
Kuduvallia, 2002, UK	Cardiothoracic Centre-Liverpool.	1155/4713	62, 79	Prospectively cohort study	ECG	<30 30-35 >35	CABG	Age, sex, previous cardiac surgery, LVEF, left main stem stenosis, number of major coronary arteries with stenosis >70%, priority of surgery, peripheral vascular disease, DM, renal dysfunction, and respiratory disease.
Melduni, 2011, USA	Olmsted County, Minnesota	135/351	66.7, 67.2	Prospective cohort study	Medical records	Continuous variable	Cardiac Surgery	Age, BMI, hypertension, mitral regurgitation, diastolic function, type of operation, and perfusion time.
Moulton, 1996, USA	Barnes Hospital	833/2299	62.8, 65.1	Retrospective cohort study	NA	≤ 30 > 30	CABG	Age, sex, race, history of reoperation, CHF, prior MI, renal failure, DM, hypertension, COPD or stroke, CPB, aortic cross-clamp.

Omer, 2016, USA	Veterans Affairs hospital	215/1248	62.4, 99	Retrospective cohort study	ECG	< 25 25- 30 ≥ 30	CABG	Age, a history of hypertension, obesity, DM, inflammation, and longer pump and cross-clamp times.
Pan, 2006 USA	Texas Heart Institute, St. Luke's Episcopal Hospital,	1913/9862	62.9, 75.4	Retrospective cohort study	NA	20-24.9 25-29.9 30-34.9 35-39.9 ≥40	CABG	Age, sex, hypertension, pulmonary disease, hyperlipidemia, DM, total bypasstime, β-Blocker, antiarrhythmics, EF, triple-vessel CAD, left main CAD, renal insufficiency.
Perrier, 2016, France	University Hospital of Strasbourg	311/1481	65.2, 81.2	Prospective cohort study	ECG	≤ 35 > 35	CABG	Age, eGFR<60 ml/min, PAD, anti-platelet treatment, CHA2DS2-VASC score, β-blockers
Reeves, 2003, UK	Patient Analysis & Tracking System, Dendrite Clinical Systems	675/4372	NA, 81.1	Prospective cohort study	ECG	< 25 25- 30 30- 35 ≥ 35	CABG	Continuously or discretely measured prognostic variables (age, Parsonnet score, number of grafts) and outcomes (blood loss; red blood cell, platelet, and fresh frozen plasma transfusion; postoperative hemoglobin levels; duration of ventilation, ICU stay, combined ICU and HDU stay, and total postoperative stay) were also grouped for analysis.
Stamou, 2011, USA	Sanger Heart and Vascular Institute	600/2440	62.5, 73.3	Retrospective cohort study	NA	18.5- 24.9 25- 29.9 ≥ 30	CABG or valve surgery	Propensity scores.

Sun, 2011, USA	Washington Hospital Center	3462/12367	64.3, 71	Retrospective cohort study	ECG	< 18.5 18.5- 25 25- 30 30- 40 ≥ 40	CABG	Age, sex, Race, HF, Left main coronary artery stenosis, Ventricular arrhythmias, Preop angina, Obstructive sleep apnea , DM, Hypertension, Family history of CAD, Previous stroke, Hypercholesterolemia, Hemodialysis, Current smoker, β-blockers, ACE inhibitors, Lipid-lowering drugs.
Tosello, 2015, France	Cardiac Surgery Unit of the Hopital Europeen G	36/176	70.5, 67.6	Prospective cohort study	ECG	Continuous variable	BAVR	Age, sex, weight, heihgt, smoking, DM, CKD, COPD, CAD, PVD, β-blocker, amiodarone, LVEF<50%, extracorporeal circulation, aortic cross-clamp time, transfusion in ICU, EUROSCORE >10
Tadic M, 2011, Serbia	Clinical Center of Serbia	72/322	59.9, 71.7	Retrospective cohortstudy	ECG	< 30 ≥ 30	CABG	Age, hypertension, DM, obesity, hypercholesterolemia, leukocytosis, and segmental kinetic disturbances of the left ventricle.
Yap, 2007, Australia	St Vincent's Hospital and The Gee long Hospital	1425/3968	66.4, 73	Retrospective cohort study	NA	20- 30 30- 40 ≥ 40	CABG and valve surgery	Age, sex, DM, hypercholesterolemia, renal impairment (Cr >0.2 mmol/L), preoperative dialysis, hypertension, cere brovascular disease, PVD, COAD, NYHA class IV, severe LV impairment (ejection fraction <30%), mean PA pressure, emergency status

Zacharias, 2005, USA	Saint Vincent Mercy Medical Center and Saint Luke's Hospital	1496/6749	NA	Retrospective cohort study	ECG, physician findings, hospital or physician chart notes and discharge summaries	< 22 22- 25 25- 30 30- 35 35- 40 ≥ 40 Continuous variable	CABG or valve surgery	Age, gender, white race, current smoker, DM, hypertension, PRF, COPD, PVD, MI, CHF, angina , arrhythmia , preoperative medications, triple-vessel disease, LMD, emergency surgery, mitral valve surgery, aortic valve surgery, off-pump, perfusion time, cross-clamp time, and IABP.
-------------------------	-----------------------------------------------------------------------------	-----------	----	-------------------------------	------------------------------------------------------------------------------------------------------	--------------------------------------------------------------------------------	--------------------------	--------------------------------------------------------------------------------------------------------------------------------------------------------------------------------------------------------------------------------------------------------------------------------------------------------------

Abbreviation: ECG, electrocardiograph; CABG, coronary artery bypass grafting; CAD, coronary artery disease; ACT, aortic clamp time; BSA, body surface area; COPD, chronic obstructive pulmonary disease; PVD, peripheral vascular disease; MI, myocardial infarction; LVEF, left ventricular ejection fraction; ECC, extra corporal circulation; RBC, red blood cell; FFP, fresh frozen plasma; CPB, cardiopulmonary bypass; EF, ejection fraction; NYHA, New York Heart Association; CHF, congestive heart failure; ITA, internal thoracic artery; BMI, body mass index; DM, diabetes mellitus; CAD, coronary artery disease; PAD, peripheral artery disease; STS, society of thoracic surgeons; PROM, predicted risk of operative mortality; HRV, heart rate variability; EF, ejection fraction; eGFR, Estimated Glomerular Filtration Rate; ICU, intensive care unit; HDU, high dependency unit; HF, heart failure; ACE, Angiotensin-Converting Enzyme; CKD, chronic kidney disease; PVD, peripheral vascular disease; PA, peripheral artery; PRF, preoperative renal failure; LMD, left main disease; IABP, intra-aortic balloon pump.

Table 2. Subgroup analysis of body mass index and post-cardiac operation atrial fibrillation

Items	Number of studies	RR	I ²	P	
				Within subgroup	Between subgroup
Result of primary analysis	30	1.09[1.05, 1.12]	82	<0.001	NA
Effect model	Random effect	1.04[1.03, 1.04]	82	<0.001	NA
	Fixed effect	1.03[1.03,1.04]	82	<0.001	
Age	≥65	1.12 [1.05, 1.20]	78	< 0.001	0.15
	<65	1.06 [1.02, 1.12]	78	0.002	
Region	Northern America	1.07 [1.04, 1.10]	84	< 0.001	0.09
	Europe	1.18 [1.00, 1.39]	75	0.05	
	Asia	0.96 [0.85, 1.09]	70	0.53	
	Oceania	1.11 [1.06, 1.17]	0	<0.001	
NOS scores	< 7 scores	1.02 [1.00, 1.04]	62	0.04	0.002
	≥7 scores	1.13 [1.09, 1.17]	64	< 0.001	
Publication year	1999-2010	1.12 [1.06, 1.17]	58	< 0.001	0.25
	2011-2020	1.08[1.04, 1.11]	85	< 0.001	
AF Diagnosis	ECG	1.14 [1.09, 1.19]	67	<0.001	0.33
	Others	1.03 [0.97, 1.09]	81	0.37	
Sample size	< 1000	1.20 [0.93, 1.53]	87	0.16	0.37
	≥ 1000	1.07 [1.04, 1.09]	75	< 0.001	
Cases	Case <100	1.57 [1.06, 2.31]	53	0.02	0.06
	Case ≥100	1.08 [1.05, 1.11]	82	< 0.001	
Operation type	CABG	1.216 [1.21, 1.219]	80	0.001	0.007
	Valve	1.34 [0.81, 2.22]	84	0.25	
	Mixed	1.13 [1.06, 1.20]	79	< 0.001	
Adjusted factors	Age (+)	1.08 [1.05, 1.12]	85	< 0.001	0.64
	Age (-)	1.04 [0.89, 1.22]	81	< 0.001	

Sex (+)	17	1.07 [1.04, 1.11]	86	< 0.001	0.28
Sex (-)	10	1.12 [1.04, 1.21]	65	0.003	
DM (+)	16	1.09 [1.05, 1.13]	86	< 0.001	0.89
DM (-)	11	1.08 [1.02, 1.15]	75	0.01	
Hypertension (+)	13	1.07 [1.04, 1.11]	85	< 0.001	0.77
Hypertension (-)	14	1.09 [1.02, 1.16]	85	< 0.001	
COPD (+)	9	1.13 [1.09, 1.17]	33	< 0.001	0.10
COPD (-)	18	1.07 [1.03, 1.11]	83	< 0.001	
CAD (+)	10	1.09 [1.03, 1.15]	86	< 0.001	0.60
CAD (-)	17	1.07 [1.03, 1.11]	81	< 0.001	

Abbreviation: NA, not available;

Table 3: Relative risks between BMI and atrial fibrillation incident after cardiac operation, from the nonlinear dose-response analysis

BMI (kg/m²)	Outcome	Atrial fibrillation after cardiac operation
		RR (95% CI)
22		Ref
25		1.03 (0.99-1.06)
28		1.06 (0.99-1.13)
30		1.07 (1.00-1.15)
32		1.12 (1.02-1.23)
34		1.16 (1.05-1.28)
37		1.23 (1.08-1.41)
39		1.29 (1.10-1.52)
42		1.39 (1.12-1.73)
44		1.46 (1.12-1.89)
49		1.65 (1.13-2.42)
52		1.76 (1.13-2.73)
$P_{\text{nonlinearity}}$		0.91

Abbreviation: BMI, body mass index; RR, relative risk.