

Title: Medium-term effects of SARS-CoV-2 infection on multiple vital organs, exercise capacity, cognition, quality of life and mental health, post-hospital discharge

Authors:

Betty Raman, DPhil^{1,2*}, Mark Philip Cassar, MD (Melit.)^{1*}, Elizabeth M Tunnicliffe, PhD¹, Nicola Filippini, DPhil³, Ludovica Griffanti, PhD^{3,4}, Fidel Alfaro-Almagro, MSc⁴, Thomas Okell, DPhil⁴, Fintan Sheerin, FRCR⁵, Cheng Xie, FRCR^{5,6}, Masliza Mahmod, DPhil¹, Ferenc E Mózes, DPhil⁷, Adam J Lewandowski, DPhil¹, Eric O Ohuma, DPhil⁸, David Holdsworth, DPhil⁹, Hanan Lamlum, DPhil¹, Myles J Woodman, BA (Hons)¹, Catherine Krasopoulos, MSc¹, Rebecca Mills, MSc¹, Flora A Kennedy McConnell, DPhil¹⁰, Chaoyue Wang, MSc⁴, Christoph Arthofer, PhD⁴, Frederik J Lange, PrEng⁴, Jesper Andersson, PhD⁴, Mark Jenkinson, DPhil⁴, Charalambos Antoniades, PhD^{1,2}, Keith M Channon, FRCP^{1,2}, Mayoora Shanmuganathan, MBBS¹, Vanessa M Ferreira, DPhil¹, Stefan K Piechnik, PhD¹, Paul Klenerman, FMedSci¹¹, Christopher Brightling, PhD¹², Nick P Talbot, DPhil¹³, Nayia Petousi, DPhil¹¹, Najib M Rahman, DPhil¹¹, Ling-Pei Ho, DPhil¹⁴, Kate Saunders, DPhil^{1,15}, John R Geddes, MD¹⁵, Paul J Harrison, FRCPsych¹⁵, Kyle Pattinson, DPhil¹⁶, Matthew J Rowland, DPhil¹⁶, Brian J Angus, MD¹⁷, Fergus Gleeson, MD¹⁸, Michael Pavlides, DPhil^{1,19}, Ivan Koychev, PhD¹⁵, Karla L Miller, PhD⁴, Clare Mackay, PhD^{3,15}, Peter Jeppard, PhD⁴, Stephen M Smith, DPhil⁴, Stefan Neubauer, MD^{1,2}

* Joint first authors.

Affiliations:

1. Division of Cardiovascular Medicine, Radcliffe Department of Medicine, National Institute for Health Research (NIHR) Oxford Biomedical Research Centre (BRC), University of Oxford, Oxford, United Kingdom
2. Radcliffe Department of Medicine, British Heart Foundation Centre for Research Excellence, University of Oxford, Oxford, United Kingdom
3. Wellcome Centre for Integrative Neuroimaging, Oxford Centre for Human Brain Activity, Department of Psychiatry, University of Oxford, Oxford, United Kingdom
4. Wellcome Centre for Integrative Neuroimaging (WIN FMRIB), Nuffield Department of Clinical Neurosciences, University of Oxford, Oxford, United Kingdom
5. Department of Radiology, Oxford University Hospitals NHS Foundation Trust, Oxford, United Kingdom
6. Centre for Tropical Medicine and Global Health, Nuffield Department of Medicine, University of Oxford, Oxford, United Kingdom
7. Oxford Centre for Clinical Magnetic Resonance Research, Radcliffe Department of Medicine, John Radcliffe Hospital Oxford, University of Oxford, Oxford, United Kingdom
8. Maternal, Adolescent, Reproductive & Child Health (MARCH) Centre, London School of Hygiene & Tropical Medicine (LSHTM), London, United Kingdom
9. Department of Physiology, Anatomy and Genetics, University of Oxford, Oxford, United Kingdom
10. Division of Clinical Neuroscience, Faculty of Medicine & Health Sciences, University of Nottingham, Nottingham, United Kingdom
11. Nuffield Department of Medicine, University of Oxford, Oxford, United Kingdom

12. Institute for Lung Health, Department of Respiratory Sciences, NIHR Leicester BRC, University of Leicester, Leicester, United Kingdom
13. Department of Physiology, Anatomy and Genetics, University of Oxford, Oxford, United Kingdom
14. Weatherall Institute of Molecular Medicine, Nuffield Department of Medicine, University of Oxford, Oxford, United Kingdom
15. Department of Psychiatry, University of Oxford, Oxford, United Kingdom
16. Nuffield Department of Clinical Neuroscience, University of Oxford, Oxford, United Kingdom
17. Experimental Medicine, Nuffield Department of Medicine, University of Oxford, Oxford, United Kingdom
18. Department of Oncology, Medical Science Department, University of Oxford, Oxford, United Kingdom
19. Translational Gastroenterology Unit, Nuffield Department of Medicine, University of Oxford, Oxford, United Kingdom

Corresponding Author:

Dr Betty Raman
Oxford Centre for Magnetic Resonance Research
Level 0, John Radcliffe Hospital
University of Oxford
Ph: 01865234580
Email address: Betty.raman@cardiov.ox.ac.uk

Abstract

Background

The medium-term effects of Coronavirus disease (COVID-19) on multiple organ health, exercise capacity, cognition, quality of life and mental health are poorly understood.

Methods

Fifty-eight COVID-19 patients post-hospital discharge and 30 comorbidity-matched controls were prospectively enrolled for multiorgan (brain, lungs, heart, liver and kidneys) magnetic resonance imaging (MRI), spirometry, six-minute walk test, cardiopulmonary exercise test (CPET), quality of life, cognitive and mental health assessments.

Findings

At 2-3 months from disease-onset, 64% of patients experienced persistent breathlessness and 55% complained of significant fatigue. On MRI, tissue signal abnormalities were seen in the lungs (60%), heart (26%), liver (10%) and kidneys (29%) of patients. COVID-19 patients also exhibited tissue changes in the thalamus, posterior thalamic radiations and sagittal stratum on brain MRI and demonstrated impaired cognitive performance, specifically in the executive and visuospatial domain relative to controls. Exercise tolerance (maximal oxygen consumption and ventilatory efficiency on CPET) and six-minute walk distance ($405\pm 118\text{m}$ vs $517\pm 106\text{m}$ in controls, $p<0.0001$) were significantly reduced in patients. The extent of extra-pulmonary MRI abnormalities and exercise tolerance correlated with serum markers of ongoing inflammation and severity of acute illness. Patients were more likely to report symptoms of moderate to severe anxiety (35% versus 10%, $p=0.012$) and depression (39% versus 17%, $p=0.036$) and a significant impairment in all domains of quality of life compared to controls.

Interpretation

A significant proportion of COVID-19 patients discharged from hospital experience ongoing symptoms of breathlessness, fatigue, anxiety, depression and exercise limitation at 2-3 months from disease-onset. Persistent lung and extra-pulmonary organ MRI findings are common. In COVID-19 survivors, chronic inflammation may underlie multiorgan abnormalities and contribute to impaired quality of life.

Funding

NIHR Oxford and Oxford Health Biomedical Research Centres, British Heart Foundation Centre for Research Excellence, UKRI, Wellcome Trust, British Heart Foundation.

Background

The global impact of Coronavirus disease or COVID-19 has been profound with hundreds of thousands of lives lost and millions affected.¹ Despite the high mortality seen among hospitalised patients, many have survived, with little known about the medium-to-long term effects of COVID-19 after discharge. Although predominantly a respiratory illness, emerging data suggests that multiorgan injury is common, particularly in those with moderate to severe infections.²⁻⁴

Studies have shown that the brain, heart, gastrointestinal system and the kidneys are particularly vulnerable to injury during the initial phase of illness.²⁻⁴ The invasive potential and affinity of severe acute respiratory syndrome coronavirus-2 (SARS-CoV-2) for multiple cell lines, suggests that virus-mediated toxicity may play a central role in promoting multi-system damage.⁵ An exaggerated and dysregulated immune response, endothelial damage, thromboinflammation and coagulopathy have also been implicated in causing injury to these organs.⁶

While it is clear that the extent of infection, inflammatory response and physiological reserve (influenced by obesity, age and comorbidities) are important determinants of clinical outcomes during the initial phase, reports of a chronic maladaptive inflammatory syndrome are also emerging. In particular, inflammatory changes in the lungs have been described in convalescing COVID-19 patients, months after discharge from hospital.⁷ Whether extra-pulmonary organs are also susceptible to ongoing inflammation and injury is poorly understood as are its effects on exercise tolerance, cognition, mental health and quality of life.

In a holistic study of survivors of moderate to severe COVID-19 infection, discharged from hospital, at 2-3 months from disease onset, we aimed to investigate the prevalence of persistent multiorgan injury/inflammation and assess the effects of COVID-19 on physical, psychological, and cognitive health and well-being.

Patients and methods

Study population

Fifty-eight patients with moderate to severe laboratory-confirmed (SARS-CoV-2 polymerase chain reaction positive) COVID-19, admitted for treatment at the Oxford University Hospitals National Health Service Foundation Trust between 14th March – 25th May 2020, and 30 uninfected controls (SARS-CoV-2 immunoglobulin negative and asymptomatic) group-matched for age, sex, body mass index (BMI) and risk factors (smoking, diabetes and hypertension) from the community (during the same period) were prospectively enrolled in this study (**appendix, Figure 1, p28**). For further details on inclusion and exclusion criteria, refer to **appendix, p2**. COVID-19 severity on admission was defined as per the World Health Organisation (WHO) interim clinical guidance (**appendix for definition, p2**). Patients with severe/end-stage multi-system comorbidities and contraindications to magnetic resonance imaging were excluded.

This study was registered at ClinicalTrials.gov (**NCT04510025**) and approved in the United Kingdom by the North West Preston Research Ethics Committee (**reference 20/NW/0235**).

Study Procedures

All subjects consented to have comprehensive multiorgan magnetic resonance imaging (MRI) of the brain, lungs, heart, liver, kidneys, six-minute walk (6MWT) test, spirometry, cardiopulmonary exercise test (CPET), series of questionnaires, and blood tests.

Multiorgan MRI protocol

A 70 minute multiorgan MRI scan was carried out at 3 Tesla (Prisma, Siemens Healthineers, Erlangen, Germany). Brain MRI included T₁ weighted imaging, T₂-Fluid attenuated inversion recovery (FLAIR) to assess (e.g.) inflammation, diffusion-weighted imaging (DWI) to assess ischaemic injury, susceptibility-weighted imaging (SWI) to assess (e.g.) haemorrhage, and quantitative multi-inversion-delay arterial spin labelling (ASL) to assess cerebral blood flow. Lung imaging included a T₂-weighted half-Fourier-acquisition single-shot turbo spin-echo (HASTE) to qualitatively assess the extent of lung parenchymal involvement. Cardiac assessment included cine imaging, T₁ and T₂ mapping, post-contrast T₁ mapping and late gadolinium enhancement (LGE) imaging to assess biventricular volumes, function, myocardial oedema, diffuse and focal/patchy fibrosis. Liver imaging consisted of a single slice T₁ map and multiecho gradient echo IDEAL, to quantify fibro-inflammation (T₁), fat (proton density fat fraction, PDFF) and iron (T₂*). Multiparametric renal imaging was also undertaken and consisted of a single coronal oblique slice T₁ map to quantify fibroinflammation and an R2* map for renal oxygenation assessment (details in **appendix, p2-5**).⁸

MRI Image analysis

All images were analysed quantitatively and qualitatively (by expert radiologist, neuroradiologist, cardiac MRI specialists, neuroimage analysts and physicists) in a blinded fashion. Lung MRIs

were qualitatively assessed for parenchymal involvement by an expert radiologist. Extent of lung parenchymal abnormalities was scored as 0 (0%), 1 (1–25%), 2 (26–50%), 3 (51–75%), or 4 (76–100%), respectively. Brain image processing was carried out using an adapted version of the processing pipeline created for the United Kingdom (UK) Biobank brain imaging analysis (<https://www.fmrib.ox.ac.uk/ukbiobank/>), based around tools from the Oxford Centre for Functional Magnetic Resonance Imaging of the Brain (FMRIB) software library [FSL (<https://fsl.fmrib.ox.ac.uk/fsl/>)] (**appendix, p3,4**). Assessment of cardiac volumes, function, myocardial T₁ maps, T₂ maps, post-contrast T₁ maps and late gadolinium enhanced images was undertaken using cvi42 software (Circle Cardiovascular Imaging Inc., Version 5.10.1, Calgary, Canada) (**appendix, p4**). Quantitative analyses of T₁ and T₂* for liver, spleen and renal images were carried out as described in the appendix (**appendix, p5**), including iron-correction for liver T₁ with an algorithm related to *LiverMultiScan* cT₁ (Perspectum, Oxford) but lacking cross-scanner standardisation and therefore not comparable to *LiverMultiScan* cT₁ .

Spirometry

Spirometry, including forced vital capacity (FVC), and forced expiratory volume at the first second of exhalation (FEV₁), was performed as per recommended guidance (**appendix, p5**).

CPET

Symptom-limited CPET was undertaken using a cycle ergometer. Following two minutes of unloaded cycling, the work rate was increased to 20W, followed by a 10W/min ramp. Participants were encouraged to reach their maximal work rate (**appendix, p6**).

Six-minute walk test

Participants were asked to walk for six-minutes in a pre-marked corridor. Borg scale, heart rate and oxygen saturation were measured immediately before and after the test (**appendix, p5**).

Questionnaires

Questionnaires were completed using an electronic data capture (CASTOR EDC, <https://www.castoredc.com>). Depression, anxiety and quality of life measures were assessed using the Patient Health Questionnaire (PHQ) depression module (PHQ-9)⁹, General Anxiety Disorder Questionnaire (GAD-7)¹⁰ and Short Form-36 (SF-36) survey¹¹. Cognitive function was assessed using the Montreal Cognitive Assessment (MoCA). The Medical Research Council (MRC) dyspnea¹² scale, Dyspnoea-12 score¹³ and Fatigue Severity Scale (FSS)¹⁴ were used to assess the extent of breathlessness and fatigue, respectively (**appendix, p6**).

Laboratory assessments

Blood-based testing consisted of a complete blood count, biochemical analysis, coagulation testing, assessment of liver and renal function, markers of cardiac injury and measures of electrolytes, C-reactive protein (CRP), procalcitonin, and lactate dehydrogenase.

Admission data collection and blood tests

Details on clinical symptoms or signs, vitals and laboratory findings during admission were extracted from electronic medical records. The severity of disease during hospital admission was graded as per the WHO ordinal scale for clinical improvement (**appendix for definition, p2**).

Statistical analysis

Continuous variables were described using mean and standard deviation (SD) for parametric data and median with interquartile range (IQR) for non-parametric data in the tables. Normality was assessed by visual inspection of histograms. Mean differences between two groups were evaluated using Student's t-tests or Mann-Whitney U-tests as appropriate. Categorical variables were reported as frequency and percentages. Associations between two groups were compared using the Chi-square test or Fisher's exact test as appropriate. Pearson's or Spearman's correlation coefficients were used to describe the relationship between two variables where relevant. Analyses of brain imaging derived phenotypes (IDP's) were undertaken after Gaussianisation (quantile normalisation) of all continuous variables and adjusting for age, sex, BMI, diastolic and systolic blood pressure, smoking and head size. The conventional level of statistical significance of 5% was used and not corrected for multiple comparisons. Statistical analyses were performed using SPSS Version 26.0 (IBM, Armonk, NY, USA).

Role of the funding source

The funders of the study had no role in study design, data collection, data analysis, data interpretation, writing of the article, or the decision to submit for publication.

Results

Mean age of the patient group was 55 ± 13 years and 34/58 (59%) were men (**Table 1**). Thirteen (22%) belonged to Black, Asian and Minority Ethnic groups. Twenty one patients (36%) had required high dependency unit (HDU) or intensive care unit (ICU) admission; 20/21 required mechanical ventilation (non-invasive ventilation or intubation). Median duration of hospitalisation was 8.5 days (IQR 5.0 - 17.0). Patients were assessed between 2-3 months from disease-onset at median interval of 2.3 months (IQR 2.06 - 2.53). Baseline characteristics of patients and group-

matched controls are listed in **Table 1**. At follow-up, COVID-19 patients had a mildly increased resting heart rate, respiratory rate and reduced oxygen saturation relative to controls.

MRI data (**Table 2**) were available for up to 54/58 patients [brain MRI (n=54), lung MRI (n=53) and cardiac and abdominal MRI (n=52)] and 28/30 controls (Study flowchart and summary of missing data in **appendix Figure 1, p27**, and **appendix Table 7, p25**).

Lung health and exercise tolerance

During hospital admission, 54/58 (93%) patients had abnormal chest X-ray or computed tomography (CT). At ~2-3 months, persistent parenchymal abnormalities on lung MRI were present in 32/53 (60%) patients (**Table 2, appendix Figure 2, p28**). Thirty-six (64%) experienced symptoms of significant breathlessness (MRC dyspnoea score ≥ 2) and 30/55 (55%) complained of fatigue (FSS ≥ 4). On average, COVID-19 survivors had a significantly lower FEV₁, FVC and higher FEV₁/FVC ratio at follow-up (**Table 3**). Abnormalities were noted in FEV₁ % predicted in 6/56 (11%), FVC % predicted in 7/56 (13%). Patients covered a shorter distance on 6MWT than controls (405 \pm 118m vs 517 \pm 106m, p<0.0001). Four (7%) patients desaturated at the end of the test. During CPET, patients achieved lower peak maximal oxygen uptake (VO₂) (**Figure 1**), % of max VO₂ predicted, anaerobic threshold (% of predicted VO₂ max), oxygen uptake efficiency slope and higher ventilatory equivalent for carbon dioxide (VE/VCO₂ slope) (**Table 3, Figure 1**) compared to controls. VE/VCO₂ slope, a marker of ventilatory efficiency, was worse in those with MRI lung parenchymal abnormalities versus those without (Median 35, IQR (32 - 43) versus 32, IQR (29 - 34), p=0.007). CPET was stopped early in 15/51 (29%) patients due to fatigue and myalgia and 5/51 (10%) of patients due to breathlessness. Anaerobic threshold was reached earlier

in patients. VE/VCO₂ and six-minute walk distance correlated with markers of inflammation in COVID-19 patients (**Figure 1, appendix Table 4, p21**).

Brain health and cognition

During hospital admission, one patient developed a right occipital stroke; follow-up brain MRI revealed signs of a mature infarct. Blinded qualitative assessment (by expert neuroradiologist) of brain MRI at 2-3 months did not reveal group differences in burden of small vessel disease, white matter hyperintensities, haemorrhage or ischaemic changes between patients and controls (**appendix Table 3, p20**). Quantitative measurements of grey matter volumes (globally and regionally), white matter volumes and cerebral perfusion were not different between groups (**appendix Table 2, p12**). Compared to controls, COVID-19 patients had a higher T₂* signal on susceptibility-weighted imaging in the left and right thalamus (**Figure 1**) and increased mean diffusivity in the left posterior thalamic radiation and sagittal stratum (left and right averaged). Patients also showed a trend for higher quantitative measure of white matter hyperintensity volume on T₂-FLAIR imaging compared to controls (**Table 2**).

Cognitive performance in the visuospatial/executive domain was impaired among patients compared to controls (MoCA visuospatial score ≤ 4 in 40% patients versus 16% in controls, $p=0.01$). Among patients, 28% (16/58) had a total MoCA score that was abnormal according to the established cut-off of <26 compared to 17% (5/30) of controls. Median MoCA scores in patients (27, IQR 25 - 29), however, were not statistically significantly different from controls (28, IQR 27 - 29, $p=0.146$) (**Figure 1**). Periventricular white matter hyperintensities and right thalamic T₂* correlated with markers of inflammation in patients (**appendix Table 4, p21**), but not with cognitive performance.

Cardiac health

During admission, 38/58 (66%) were screened for cardiac involvement with troponin (high sensitivity Troponin I). Three (8%) were found to have an elevated troponin during admission. At follow-up, troponin was normal in all patients (**appendix Table 1, p9**). Left ventricular function was normal and comparable between groups. Right ventricular ejection fraction in patients ranged from 43 to 79%, and on average was normal and not different from controls (**appendix Table 2, p12**). Slice-averaged basal and mid-ventricular native T₁, a marker of fibrosis or inflammation on cardiac MRI, was significantly elevated in patients (**Table 2, Figure 1**). Basal myocardial T₁ was elevated (> 2 SD from average control T₁) in 26% (13/50) of patients. Mid myocardial T₁ was elevated in 8% (4/51) and average of base and mid myocardial T₁ in 24% (12/50) of patients. Native T₂, a marker of oedema, was not different between patients and controls. Extracellular volume fraction (a measure of diffuse fibrosis) tended to be higher in the base but the numerical differences failed to reach statistical significance (**Table 2**). Focal fibrosis burden was mildly increased in patients. Both basal and mid-ventricular myocardial T₁ correlated moderately (**appendix, p2** for definition) with CRP and pro-calcitonin in patients (**appendix Table 4, p21, Figure 1**), but not in controls ($p > 0.1$).

Liver health

Acute liver injury (**appendix, p2**) was seen in 31% (18/58) of patients. At 2-3 months, 11% had persistent liver injury (non-specific pattern) on blood tests (**appendix Table 1, p9**). On MRI, another 10% (5/52) of patients had signs of liver injury evidenced by increased iron-corrected liver T₁ (**Table 2, Figure 1**). Iron-corrected liver T₁ is a histologically validated imaging biomarker of hepatic fibro-inflammation,¹⁵ which has subsequently been developed in *LiverMultiScan* where it is increasingly being used to monitor the response of hepatitis to novel therapies.¹⁶ By contrast,

liver fat, iron and extracellular volume fraction (a marker of diffuse fibrosis) did not differ between groups. Iron-corrected liver T_1 correlated moderately with systemic markers of inflammation (white cell count, neutrophil, monocyte count and CRP) in patients (**appendix Table 4, p21**), but also in controls.

Haematological system and spleen

Haematological abnormalities including lymphocytopenia and thrombocytopenia were seen in 47% (27/58) and 2% (1/58) of patients at admission respectively and an elevated CRP (>10mg/L) was seen in 98% (57/58). At follow-up, all abnormalities in lymphocyte and platelet count returned to normal. However, patients tended to have higher a CRP ($p=0.058$) (**appendix, Table 1, p9**). Splenic volume and tissue characteristics on MRI did not differ significantly between patients and controls (**appendix Table 2, p12**).

Kidney health

Six (10%) patients developed acute kidney injury (**Table 1**), of whom two required renal replacement therapy during admission. At 2-3 months, 3% (2/58) of patients had residual renal impairment which was not present prior to COVID-19. On average, creatinine and estimated glomerular filtration rate were not significantly different between patients and controls (**appendix Table 1, p9**). Despite this, both average (left and right) renal cortical T_1 and corticomedullary differentiation, markers of renal injury/fibro-inflammation, were abnormal in patients (**Table 2, Figure 1**). A significantly higher renal cortical T_1 (> 2 SD than control mean) was seen in 29% (15/51) of patients. Patients with acute kidney injury during admission had a higher average renal cortical T_1 (1711±90ms versus 1582±81ms, $p=0.001$) and lower corticomedullary differentiation (318±59 versus 405±83, $p=0.016$; **appendix Figure 2, p28**) compared to those without. Kidney

oxygenation did not differ between patients and controls (**appendix Table 2, p12**). Average renal cortical T₁ had a moderate correlation with markers of inflammation (CRP, pro-calcitonin) in patients at follow-up (**appendix Table 4, p21**).

Mental health and quality of life

At 2-3 months, a higher proportion of COVID-19 patients reported moderate to severe symptoms of depression (i.e., PHQ-9 score ≥ 6 , 39% versus 17%, $p=0.036$) and anxiety (i.e., GAD-7 score ≥ 6 , 35% versus 10%, $p=0.012$) compared to controls (**Table 4, Figure 2**). Patients reported a significantly reduced quality of life in all domains (**Table 4, Figure 2**). Importantly, impairment in both physical and emotional health imposed significant role limitations among COVID-19 survivors. The severity of depression and anxiety did not consistently associate with markers of inflammation (except for monocyte count) or multiorgan injury among COVID-19 patients (**appendix Table 4, p21**). However, a moderate correlation was seen between extent of mood symptoms and anxiety and ongoing breathlessness (MRC dyspnoea score) (PHQ-9: $r=0.58$, $p<0.0001$, GAD-7: $r=0.41$, $p=0.002$).

Severity of disease and persistent inflammation

Severity of illness during admission (WHO ordinal scale) (**appendix Table 4, p21, Table 5, p23**) correlated moderately with inflammatory markers at follow-up, signs of persistent inflammation/injury in the lungs, liver, kidneys, and VE/VCO₂ on CPET. Notably, even in patients who were not critically ill (i.e., those who were not intubated or ventilated or receiving vasopressor/ionotropic support or renal replacement therapy), MRI evidence of lung, cardiac, kidney and brain abnormalities could be seen (**appendix Table 6, p24**). Although the severity of

illness during admission did not predict the risk of depression, the extent of persistent symptoms did.

Discussion

The present holistic study uniquely characterised the medium-term effects of COVID-19 infection on multiple vital organs, functional capacity, mental health and cognition in post-hospital survivors of moderate to severe infection. The key findings of our study are: First, at 2-3 months from disease-onset, a proportion of COVID-19 patients displayed abnormalities in the lungs, brain, heart, liver and kidneys on MRI. Second, the severity of acute illness during admission correlated with markers of multiorgan injury at follow-up. Third, limitations in exercise tolerance (CPET and six-minute walk distance) and imaging biomarkers correlated with the extent of persistent inflammation. Deconditioning, symptoms of persistent breathlessness, and fatigue were prominent among patients and interfered with activities of daily living and quality of life. Finally, moderate to severe self-reported depression and anxiety symptoms were more common among patients than controls and were related to the burden of persistent breathlessness at follow-up.

Studies examining the temporal evolution of lung abnormalities on serial high-resolution CT scans have revealed that persistent inflammatory changes may be seen in up to 71% of COVID-19 survivors at three months post discharge.^{7,17} Consistent with this, we observed a high proportion of parenchymal abnormalities on lung MRI, albeit at a lower frequency than that seen on CT. Previous investigations have shown that survivors of SARS pneumonia can be left with more permanent damage to the lungs¹⁸ and abnormalities in lung function for months to even years after infection. In our study, 13% of patients exhibited abnormalities on spirometry (FVC) at 2-3 months. Although we were unable to assess diffusion capacity (D_{LCO}) in our patients, our findings

are in line with a recent report by Mo and colleagues, who demonstrated similar anomalies on spirometry and additionally described an impairment in D_{LCO} in up to 47% of cases.¹⁹

The affinity of SARS-CoV-2 for extra-pulmonary organs is increasingly recognised. Post-mortem studies have confirmed the presence of high titres of SARS-CoV-2 viral load and expression of receptors (Angiotensin-2 Converting Enzymes/ACE2 and Type II transmembrane serine protease/TMPRSS) for viral entry and replication in the lungs, kidneys, liver, heart and brain.⁵ Injury to extrapulmonary organs may be mediated by direct viral toxicity, widespread immunological response and/or thromboinflammation exacerbated by endothelitis.⁶

Occult neurological injury has been suspected in COVID-19 due to a high burden of non-specific neurological symptoms.²⁰ Although neurological symptoms were frequent (~50%) in our unselected cohort, imaging evidence of severe neurologic injury on MRI was rare. Nevertheless, patients demonstrated increased bilateral thalamic T_2^* signal on susceptibility-weighted imaging and increased mean diffusivity in posterior thalamic radiations and sagittal stratum. Susceptibility-weighted imaging is often used to detect blood breakdown products and calcification.²¹ That these abnormalities could reflect a higher burden of microvascular events among COVID-19 survivors is tentatively supported by a trend towards an increased volume of white matter hyperintensities among patients. This would be consistent with the higher frequency of cerebrovascular events reported by others.²⁰ While the exact pathophysiology underlying the cerebrovascular disease is yet to be clarified, it is possible that a combination of hypercoagulable state acutely and chronic neuroinflammatory processes, supported by the association of white matter hyperintensity volumes,²² T_2^* abnormalities and inflammatory markers, play an important role. The cognitive

profile observed (primarily dysexecutive) among patients is also consistent with a vascular pattern, replicating previous reports of dysexecutive syndrome in COVID-19 survivors.²³ Although our cross-sectional study design limits the extent to which causal associations can be made, our findings suggest a potential link between COVID-19 and future risk of cognitive decline.

Evidence of acute myocardial injury can be seen in up to a third of hospitalised patients with moderate to severe SARS-CoV-2 infection and associates with fatal outcomes.^{2,24} Cardiac MRI has been shown to be particularly useful in providing a diagnosis in patients with suspected cardiac involvement.²⁵ In a recent study by Puntmann and colleagues,²⁶ cardiac MRI showed evidence of a high burden of inflammation (60% of patients), as seen by elevated native T₁, T₂ and some biventricular impairment in convalescing COVID-19 patients, a third of whom required hospitalisation. In our study of hospitalised patients, at 2-3 months, only 26% had a significantly elevated native T₁. Native T₂ and cardiac function did not differ from our risk-factor matched cohort consistent with an earlier study by Knight and colleagues²⁵. A point worth noting is that differences in prevalence estimates on MRI studies may arise from variations in ‘reference ranges’ (normal versus risk-factors matched controls), methodological differences (sequence parameters, field strength, analysis method), and patient characteristics. Our approach to use a risk-factor matched control group (prospectively enrolled under identical scan conditions) as reference suggests that abnormal tissue characteristics on MRI in 26% of patients could not be explained by the mere presence of comorbidities. Furthermore, myocardial native T₁ moderately correlated with serum markers of inflammatory response, indicating a possible relationship between the extent of ongoing inflammation and myocardial tissue abnormalities.

Several independent investigations^{3,4} have confirmed a high prevalence of acute liver injury in hospitalised COVID-19 patients. Potential mechanisms include hyperinflammatory syndrome, hypoxia-mediated metabolic derangements, venous thrombosis and drug-induced hepatitis.²⁷ Direct infection of cholangiocytes has also been suggested, as SARS-CoV-2 may injure the bile ducts by binding to ACE2 receptors.²⁸ We observed that 11% of patients had persistent blood biomarker evidence of liver injury at 2-3 months, and another 10% demonstrated increased iron-corrected liver T₁, a marker of fibroinflammation.¹⁵ In our study, the extent of liver injury on MRI moderately correlated with inflammatory markers, supporting the role of inflammation in promoting hepatic damage.

The kidneys are amongst the most common targets of SARS-CoV2, with acute kidney injury reported in 0.5-37% of hospitalised COVID-19 patients.^{2-4,29,30} Direct infection of renal cells may occur via ACE2 receptors which are enriched in podocytes and endothelial cells.³¹ Associated histopathological abnormalities include prominent lymphocytic endothelitis, acute tubular necrosis, diffuse erythrocyte aggregation, peritubular obstruction and podocyte injury.³¹ We showed that 29% of patients had abnormal renal tissue characteristics on MRI. In particular, cortical T₁, a marker of renal inflammation/injury was prolonged and accompanied by a loss of corticomedullary differentiation, a pattern reminiscent of other post-inflammatory glomerulonephritides.³² Patients with more severe disease (i.e, acute kidney injury, need for higher oxygen support) and higher inflammatory burden were more likely to have abnormal cortical T₁ and corticomedullary differentiation at follow-up.

Chronic inflammation represents a sustained reaction of the immune system to an inflammatory stimulus (i.e, viral nucleic acid) accompanied by tissue damage.³³ The association of multiple imaging markers of organ abnormalities and inflammatory response in COVID-19 patients, but not in controls, suggests that chronic inflammation may play a role in mediating multiorgan abnormalities.³⁴ Although critical illness has also been shown in prior studies to associate with systemic inflammation³⁵, we found that MRI evidence of multiorgan abnormalities was not limited to patients with critical disease alone. Further efforts to understand the role of specific immunopathological mechanisms underlying this inflammatory process, and strategies to arrest them, could be important in limiting the long-term detrimental effects of COVID-19 on vital organs.

Insights from earlier studies of SARS survivors³⁶ have raised concerns that limitations in exercise tolerance may persist for months after infection. In our study, patients achieved a shorter six-minute walk distance, lower peak VO_2 and lower % of predicted VO_2 max at the anaerobic threshold (VT1). VE/VCO_2 slope, a measure of ventilatory efficiency, was worse in patients with parenchymal abnormalities and both VE/VCO_2 and six-minute walk distance correlated with markers of systemic inflammation. Of note, a higher proportion of patients (29%) stopped the CPET early because of generalised muscle ache and fatigue rather than breathlessness. These findings suggest that muscle wasting, secondary to a catabolic state induced by severe illness³⁷ and potentially ongoing inflammation³⁸, could be an important contributor to exercise limitations, along with lung parenchymal abnormalities.

In addition to coping with the debilitating acute effects of COVID-19, survivors experience a range of mental stressors whilst in-hospital and after discharge. Not surprisingly, we and others^{39,40} have observed a high-level of self-reported symptoms of anxiety and depression among survivors. Infection-triggered cytokine dysregulation and the neurotropic potential of SARS-CoV-2 have widely been speculated to induce psychopathological sequelae among COVID-19 patients, consistent with neuroinflammatory mechanisms implicated in other psychiatric disorders.⁴¹ Here, although the burden of ongoing symptoms of breathlessness associated with mood and anxiety symptoms, we did not see a consistent association between markers of systemic inflammation or organ injury and depression. Given the limited sample size of our study, a more focussed approach in a larger cohort could yield further insights into such relationships and offers the potential to identify novel targets for neuropsychiatric therapeutic modulation.

Limitations

The relatively small sample size of this single-centre study, its cross-sectional design and lack of correction for multiple comparisons are important limitations which curtail the generalisability of our findings and accuracy of prevalence estimates. The lack of pre-COVID imaging also limits our ability to make causal inferences about the mechanism of multiorgan abnormalities in patients recovering from COVID-19 infection. However, this is the first exploratory study to comprehensively undertake a holistic assessment of multiple vital organs, mental, cognitive and physical health in patients with COVID-19 post-hospital discharge. These findings underscore the need for further large scale investigations as is currently planned by Public Health England through the Post-HOSPitalisation COVID-19 (PHOSP-COVID)⁴² national consortium and its two MRI sub-studies C-MORE and COVERSCAN. The assessment of lung function and lung injury were limited given the lack of D_{LCO} assessments and CT chest in all subjects, due to restricted access to

lung function testing. The use of lung MRI in place of CT could have underestimated the prevalence of lung injury. Controls in our study were not hospitalised, thus group differences in symptomatology, mental health, exercise capacity and quality of life may not be specific to COVID-19. We excluded patients with severe comorbidities to provide more reliable estimates of COVID-19 specific injury and may have underestimated the extent of multiorgan damage in the wider population. There were ethnoracial differences between the control and COVID-19 patients enrolled in this study which may have played a role in prevalence estimates of multiorgan injury. Finally, whether the findings on MRI have any long term clinical implications remains to be determined by further longitudinal follow-up studies.

Conclusions

Among post-hospital survivors of moderate to severe COVID-19 infection, abnormalities on multiorgan MRI were seen in a proportion of patients at 2-3 months from disease onset. The severity of acute illness and serum markers of inflammation correlated with the extent of multiorgan changes on MRI and reduced exercise tolerance at follow-up. COVID-19 survivors experience a high burden of depression, anxiety, as well as reduced quality of life post-hospital discharge. Our findings underscore the need to further understand the pathophysiological mechanisms underpinning multiorgan MRI tissue abnormalities and to provide a holistic-integrated multidisciplinary model of clinical care for COVID-19 patients post hospital discharge.

References

1. World Health Organisation. WHO coronavirus disease (COVID-19) dashboard. Accessed on August 29, 2020. <https://covid19.who.int/>
2. Zhou F, Yu T, Du R, et al. Clinical course and risk factors for mortality of adult inpatients with COVID-19 in Wuhan, China: a retrospective cohort study. *The lancet* 2020.
3. Huang C, Wang Y, Li X, et al. Clinical features of patients infected with 2019 novel coronavirus in Wuhan, China. *The lancet* 2020; **395**(10223): 497-506.
4. Guan W-j, Ni Z-y, Hu Y, et al. Clinical characteristics of coronavirus disease 2019 in China. *New England journal of medicine* 2020; **382**(18): 1708-20.
5. Puelles VG, Lütgehetmann M, Lindenmeyer MT, et al. Multiorgan and Renal Tropism of SARS-CoV-2. *New England Journal of Medicine* 2020.
6. Gupta A, Madhavan MV, Sehgal K, et al. Extrapulmonary manifestations of COVID-19. *Nature medicine* 2020; **26**(7): 1017-32.
7. Zhao Y-m, Shang Y-m, Song W-b, et al. Follow-up study of the pulmonary function and related physiological characteristics of COVID-19 survivors three months after recovery. *EClinicalMedicine* 2020: 100463.
8. Cox EF, Buchanan CE, Bradley CR, et al. Multiparametric renal magnetic resonance imaging: validation, interventions, and alterations in chronic kidney disease. *Frontiers in physiology* 2017; **8**: 696.
9. Kroenke K, Spitzer RL, Williams JB. The PHQ-9: validity of a brief depression severity measure. *Journal of general internal medicine* 2001; **16**(9): 606-13.
10. Spitzer RL, Kroenke K, Williams JB, Löwe B. A brief measure for assessing generalized anxiety disorder: the GAD-7. *Archives of internal medicine* 2006; **166**(10): 1092-7.
11. Ware Jr JE, Sherbourne CD. The MOS 36-item short-form health survey (SF-36): I. Conceptual framework and item selection. *Medical care* 1992: 473-83.
12. Bestall J, Paul E, Garrod R, Garnham R, Jones P, Wedzicha J. Usefulness of the Medical Research Council (MRC) dyspnoea scale as a measure of disability in patients with chronic obstructive pulmonary disease. *Thorax* 1999; **54**(7): 581-6.
13. Yorke J, Moosavi SH, Shuldham C, Jones PW. Quantification of dyspnoea using descriptors: development and initial testing of the Dyspnoea-12. *Thorax* 2010; **65**(1): 21-6.
14. Krupp LB, LaRocca NG, Muir-Nash J, Steinberg AD. The fatigue severity scale: application to patients with multiple sclerosis and systemic lupus erythematosus. *Archives of neurology* 1989; **46**(10): 1121-3.
15. Pavlides M, Banerjee R, Tunnicliffe EM, et al. Multiparametric magnetic resonance imaging for the assessment of non-alcoholic fatty liver disease severity. *Liver International* 2017; **37**(7): 1065-73.
16. Thomaidis-Brears HB, Lepe R, Banerjee R, Duncker C. Multiparametric MR mapping in clinical decision-making for diffuse liver disease. *Abdominal Radiology* 2020: 1-16.
17. Zha L, Shen Y, Pan L, et al. Follow-up study on pulmonary function and radiological changes in critically ill patients with COVID-19. *The Journal of infection* 2020: S0163-4453 (20) 30317-0.
18. Hui D, Joynt G, Wong K, et al. Impact of severe acute respiratory syndrome (SARS) on pulmonary function, functional capacity and quality of life in a cohort of survivors. *Thorax* 2005; **60**(5): 401-9.
19. Mo X, Jian W, Su Z, et al. Abnormal pulmonary function in COVID-19 patients at time of hospital discharge. *European Respiratory Journal* 2020; **55**(6).

20. Varatharaj A, Thomas N, Ellul MA, et al. Neurological and neuropsychiatric complications of COVID-19 in 153 patients: a UK-wide surveillance study. *The Lancet Psychiatry* 2020.
21. Mittal S, Wu Z, Neelavalli J, Haacke EM. Susceptibility-weighted imaging: technical aspects and clinical applications, part 2. *American Journal of neuroradiology* 2009; **30**(2): 232-52.
22. Verhaaren BF, DeBette S, Bis JC, et al. Multiethnic genome-wide association study of cerebral white matter hyperintensities on MRI. *Circulation: Cardiovascular Genetics* 2015; **8**(2): 398-409.
23. Helms J, Kremer S, Merdji H, et al. Neurologic features in severe SARS-CoV-2 infection. *New England Journal of Medicine* 2020.
24. Guo T, Fan Y, Chen M, et al. Cardiovascular implications of fatal outcomes of patients with coronavirus disease 2019 (COVID-19). *JAMA cardiology* 2020.
25. Knight DS, Kotecha T, Razvi Y, et al. COVID-19: Myocardial injury in survivors. *Circulation* 2020.
26. Puntmann VO, Carerj ML, Wieters I, et al. Outcomes of Cardiovascular Magnetic Resonance Imaging in Patients Recently Recovered From Coronavirus Disease 2019 (COVID-19). *JAMA Cardiology* 2020.
27. Li H, Liu L, Zhang D, et al. SARS-CoV-2 and viral sepsis: observations and hypotheses. *The Lancet* 2020.
28. Chai X, Hu L, Zhang Y, et al. Specific ACE2 Expression in Cholangiocytes May Cause Liver Damage After 2019-nCoV Infection. *bioRxiv* 2020: 2020.02.03.931766.
29. Hirsch JS, Ng JH, Ross DW, et al. Acute kidney injury in patients hospitalized with COVID-19. *Kidney International* 2020.
30. Arentz M, Yim E, Klaff L, et al. Characteristics and outcomes of 21 critically ill patients with COVID-19 in Washington State. *Jama* 2020; **323**(16): 1612-4.
31. Su H, Yang M, Wan C, Yi L, Tang F, Zhu H. Renal histopathological analysis of 26 postmortem findings of patients with COVID-19 in China [published online ahead of print Apr 9, 2020]. *Kidney International doi*; **10**.
32. Graham-Brown M, Singh A, Wormleighton J, et al. Association between native T1 mapping of the kidney and renal fibrosis in patients with IgA nephropathy. *BMC nephrology* 2019; **20**(1): 256.
33. Furman D, Campisi J, Verdin E, et al. Chronic inflammation in the etiology of disease across the life span. *Nature medicine* 2019; **25**(12): 1822-32.
34. Yang L, Liu S, Liu J, et al. COVID-19: immunopathogenesis and Immunotherapeutics. *Signal Transduction and Targeted Therapy* 2020; **5**(1): 1-8.
35. Griffith DM, Lewis S, Rossi AG, et al. Systemic inflammation after critical illness: relationship with physical recovery and exploration of potential mechanisms. *Thorax* 2016; **71**(9): 820-9.
36. Ong KC, Ng A-K, Lee L-U, et al. Pulmonary function and exercise capacity in survivors of severe acute respiratory syndrome. *European Respiratory Journal* 2004; **24**(3): 436-42.
37. Herridge MS, Tansey CM, Matté A, et al. Functional disability 5 years after acute respiratory distress syndrome. *New England Journal of Medicine* 2011; **364**(14): 1293-304.
38. Haddad F, Zaldivar F, Cooper DM, Adams GR. IL-6-induced skeletal muscle atrophy. *Journal of applied physiology* 2005; **98**(3): 911-7.

39. Taquet M, Luciano S, Geddes JR, Harrison PJ. Bidirectional associations between COVID-19 and psychiatric disorder: a study of 62,354 COVID-19 cases. *medRxiv* 2020.
40. Mazza MG, De Lorenzo R, Conte C, et al. Anxiety and depression in COVID-19 survivors: role of inflammatory and clinical predictors. *Brain, Behavior, and Immunity* 2020.
41. Miller AH, Raison CL. The role of inflammation in depression: from evolutionary imperative to modern treatment target. *Nature reviews immunology* 2016; **16**(1): 22.
42. NIHR Leicester Biomedical Research Centre. Post-HOSPitalisation COVID-19 study – a national consortium to understand and improve long-term health outcomes. Accessed on 9th September 2020. <https://www.leicesterbrc.nihr.ac.uk/themes/respiratory/research/phosp-covid/>.

Declaration of Competing Interest

EMT is an author of the following patents: Systems and methods for gated mapping of T1 values in abdominal visceral organs (GB2497668B), Multi-parametric magnetic resonance diagnosis and staging of liver disease (GB2498254B), and Processing MR relaxometry data of visceral tissue to obtain a corrected value of relaxometry data based on a normal iron content for the visceral tissue (GB2513474B), all licensed to Perspectum. EMT, MP, AL and SN are shareholders in Perspectum. SN was a board member and consultant to Perspectum until 2019. TO has the following patents pending: Combined angiography and perfusion using radial imaging and arterial spin labeling, and Off-resonance Correction for Pseudo-continuous Arterial Spin Labeling. TO is author patents titled: Estimation of blood flow rates, Fast analysis method for non-invasive imaging of blood flow using vessel-encoded arterial spin labelling and Quantification of blood volume flow rates from dynamic angiography data, both of which are licensed to Siemens Healthineers. MJ receives royalties from Oxford University Innovations for the commercial use of the FSL software. SKP and SN are authors of the patents for calculating T1 (ShMOLLI) in the heart, liver and abdomen: US patent 61/387,591 licensed to Siemens (SKP only), US patent 61/630,508 licensed to Perspectum (SKP and SN), and US patent 61-630,510 licensed to Perspectum (SKP and SN). All other authors do not have conflicts of interest to declare.

Acknowledgements

The authors' work was supported by NIHR Oxford and Oxford Health Biomedical Research Centre, Oxford British Heart Foundation (BHF) Centre of Research Excellence, United Kingdom Research Innovation and Wellcome Trust. P.J. thanks the Dunhill Medical Trust for support. The views expressed are those of the authors and not necessarily those of the National Health Service, NIHR, or the United Kingdom Department of Health.

This project is part of a tier 3 study (C-MORE) within the collaborative research programme entitled PHOSP-COVID Post-hospitalisation COVID-19 study: a national consortium to understand and improve long-term health outcomes. Funded by the Medical Research Council and Department of Health and Social Care/National Institute for Health Research Grant (MR/V027859/1) ISRCTN number 10980107.

This work also arises from one of the national "COVID-19 Cardiovascular Disease Flagship Projects" designated by the NIHR-BHF Cardiovascular Partnership.

We thank our patients and their families who have sought to help others understand about the effects of COVID-19. We are grateful to the University of Oxford and Oxford University Hospital Trust for their support of this study. We would like to acknowledge OCMR staff, Ms Polly Whitworth, Ms Joanna Leal, Ms Claudia Nunes, Ms Harriet Nixon, Ms Injung Jang, Ms Maryam Khan, Ms Gillian Anderson, Mr Mike McDonald, Ms Jasmine Taylor, Dr Ahmed Moola, Ms Sarah White, Dr Innes Abdel Assam, for their help with this work. We acknowledge the support of Siemens in providing a licence for the use of ASL.

Data sharing statement

Individual de-identified participant data will be made available when the trial is complete, or upon requests directed to the corresponding author; after approval of a proposal, data can be shared through a secure online platform.

Author contribution

BR and SN had the idea for and designed the study with the help of all co-authors and had full access to all the data in the study and take responsibility for the integrity of the data and the accuracy of the data analysis. BR and HL were involved in application of ethics. MM, BR, CK, RM and MC collected the data. PJ, EMT, RM, KM, SS, SM, CM were involved in developing the MRI protocol. EOO, MC, LG, SM, FA, TO, FKM, CW, CA, FL, JA, MJ, SS, EMT, XC, BR, AL, FEM performed the analysis. BR, MC and SN drafted the paper. All authors critically revised the manuscript for important intellectual content and gave final approval for the version to be published. All authors agree to be accountable for all aspects of the work in ensuring that questions related to the accuracy or integrity of any part of the work are appropriately investigated and resolved.

Table 1. Demographics, baseline characteristics, vital signs at follow-up and admission details of COVID-19 survivors and control participants

	COVID	CONTROL	p-value
General demographics			
Age, years	55.4 (13.2)	53.9 (12.3)	0.62
Sex			1.00 ^d
Female	24/58 (41.4%)	12/30 (40.0%)	
Male	34/58 (58.6%)	18/30 (60.0%)	
BMI, kg/m ²	30.8 (26.2 - 36.4)	27.3 (23.1 - 35.1)	0.17 ⁺
Black/Asian and minority ethnic groups	13/58 (22.4%)	1/30 (3.3 %)	0.03
Current/Ex-smoker	20/58 (34.5%)	7/30 (23.3%)	0.34 ^e
Type 1 Diabetes	1/58 (1.7%)	0/30 (0.0%)	1.00 ^e
Type 2 Diabetes	8/58 (13.8%)	3/30 (10.0%)	0.74 ^e
Hypertension	22/58 (37.9%)	9/30 (30.0%)	0.49 ^e
Coronary artery disease	2/58 (3.4%)	0/30 (0.0%)	0.55 ^e
Cerebrovascular Disease	1/58 (1.7%)	0/30 (0.0%)	1.00 ^e
Asthma	20/58 (34.5%)	6/30 (20.0%)	0.22 ^e
COPD	3/58 (5.2%)	0/30 (0.0%)	0.55 ^e
Previous cancer	2/58 (3.4%)	3/30 (10.0%)	0.33 ^e
Depression	3/58 (5.2%)	1/30 (3.3%)	1.00
Vital signs at follow-up			
Heart rate, bpm	76.3 (14.1)	70.2 (12.1)	0.047
Systolic pressure, mmHg	139.7 (16.5)	137.2 (17.0)	0.51
Diastolic pressure, mmHg	79.5 (71.8 - 86.8)	71.5 (63.0 - 87.8)	0.12 ⁺
Temperature, °C	36.6 (36.5 - 36.7)	36.5 (36.4 - 36.6)	0.047 ⁺
Oxygen saturation, %	96.0 (95.0 - 97.0)	97.0 (96.0 - 98.0)	0.008 ⁺

Respiratory rate, respirations/minute	18·0 (17·8 - 20·0)	16·0 (13·8 - 18·0)	<0·001 ⁺
Admission details			
Median length of stay, days	8·5 (5·0 - 17·0)		
Readmitted	10/58 (17·2%)		
Required ITU admission	21/58 (36·2%)		
qSOFA			
0	17/58 (29·3%)		
1	38/58 (65·5%)		
2	3/58 (5·2%)		
3	0/58 (0·0%)		
Ordinal scale for clinical improvement (WHO)			
1	0/58 (0·0%)		
2	4/58 (6·9%)		
3	22/58 (37·9%)		
4	5/58 (8·6%)		
5	15/58 (25·9%)		
6	7/58 (12·1%)		
7	5/58 (8·6%)		
Signs and symptoms			
Fever	51/58 (87·9%)		
Malaise	51/58 (87·9%)		
Shortness of breath	51/58 (87·9%)		
Cough	35/58 (60·3%)		
Dysgeusia	29/58 (50·0%)		
Anosmia	26/58 (44·8%)		
Diarrhoea	17/58 (29·3%)		
Chest pain	16/58 (27·6%)		
Headache	13/58 (22·4%)		

Vomiting	9/58 (15.5%)
Fever on admission	39/58 (67.2%)
<37.5°C	19/58 (32.8%)
37.5°C - 38.0°C	12/58 (20.7%)
38.1°C - 39°C	19/58 (32.8%)
>39°C	8/58 (13.8%)
Treatment	
Oxygen replacement	54/58 (93.1%)
Nasal cannula	14/58 (24.1%)
Simple face mask	7/58 (12.1%)
Venturi face mask	6/58 (10.3%)
High flow oxygen delivery	7/58 (12.1%)
CPAP	8/58 (13.8%)
Intubation	12/58 (20.7%)
ECMO	0/58 (0%)
Inotropic support	4/58 (6.9%)
Renal replacement therapy	2/58 (3.4%)
Antibiotics	57/58 (98.3%)
Antivirals	4/58 (6.9%)
Steroids	16/58 (27.6%)
Acute organ injury	
Acute liver injury*	18/58 (31.0%)
Acute kidney injury [Ⓞ]	6/58 (10.3%)
Acute cardiac injury [✱]	3/38 (7.8%)
Pulmonary embolism	7/58 (12.1%)
Central	1/58 (1.7%)
Peripheral	6/58 (10.3%)

Data are mean (SD), median (IQR) and n/N (%), where N is the total number of participants with available data. p-values from independent Student's t-test, Mann-Whitney U test (+), Chi square (°) or Fisher's exact test (ε). COPD = chronic obstructive pulmonary disease. ITU = intensive treatment unit. qSOFA = quick sequential organ failure assessment. CPAP = Continuous positive airway pressure. ECMO = extracorporeal membrane oxygenation. WHO = world health organisation. * defined as blood levels of alanine aminotransferase (ALT) or aspartate aminotransferase (AST) above 3x the upper reference limit (>135 IU/L or >126 IU/L, respectively), alkaline phosphatase or gamma-glutamyltransferase above 2x the upper reference limit (>260 IU/L or >80 IU/L, respectively). ⊕ defined as an increase in serum creatinine of at least 26 μmol/L within 48 hours, or 1.5 to 2-fold increase from baseline. ж defined as an acute rise in hypersensitive troponin I above the 99th percentile upper reference limit (>34 ng/L). Control subjects were matched for co-morbidities as closely as possible.

Table 2. Relevant MRI parameters in COVID-19 survivors and controls

	COVID	CONTROL	p-value
Lung MRI			
Lung parenchymal abnormalities, %	32/53 (60.4%)	3 (10.7%)	<0.0001 ^ε
0	21/53 (39.6%)	25/28 (89.3%)	0.0003 ^ε
< 25%	3/53 (5.7%)	0/28 (0.0%)	
25 - 50%	8/53 (15.1%)	2/28 (7.1%)	
50 - 75%	9/53 (17.0%)	0/28 (0.0%)	
> 75%	12/53 (22.6%)	1/28 (3.6%)	
Cardiac MRI			
T1, T2, post contrast T1 mapping analysis			
Native T1 (basal myocardium), ms	1179.7 (34.4)	1149.3 (24.0)	0.0001
> 1197 ms (>2SD from control mean)	13/50 (26.0%)	1/28 (3.7%)	0.015 ^ε
Native T1 (mid myocardium), ms	1173.1 (33.6)	1150.2 (32.4)	0.004
> 1215 ms (>2SD from control mean)	4/51 (7.8%)	0/28 (0.0%)	0.29 ^ε
Native T1 (apical myocardium), ms	1177.4 (44.7)	1168.3 (53.2)	0.42
> 1275 ms (>2SD from control mean)	1/50 (2.0%)	1/28 (3.6%)	1.00 ^ε
Extracellular volume (basal myocardium), %	30.4 (28.3 - 31.3)	28.3 (26.8 - 31.5)	0.12
Extracellular volume (mid myocardium), %	30.1 (27.2 - 31.4)	29.4 (27.1 - 30.7)	0.41 ⁺
Extracellular volume (apical myocardium), %	28.7 (27.0 - 31.6)	29.7 (27.2 - 31.5)	0.51 ⁺
T2 (basal myocardium), ms	41.7 (2.2)	41.6 (2.2)	0.80
T2 (mid myocardium), ms	41.8 (2.2)	41.1 (2.3)	0.21
T2 (apical myocardium), ms	43.5 (3.0)	43.7 (3.5)	0.81 ⁺
Late gadolinium enhancement analysis			
% LGE enhancement, % of left ventricular mass	0.8 (0.5 - 1.9)	0.6 (0.3 - 1.0)	0.023 ⁺
Myocarditis pattern	6/52 (11.5%)	2/28 (7.4%)	0.47 ^ε
Myocardial infarction	1/52 (1.9%)	0 (0.0%)	
LV/RV insertion point	7/52 (13.5%)	1/28 (3.7%)	
Mixed	0 (0%)	0 (0%)	

Other	0 (0%)	0 (0%)	
Liver analysis			
T1, ms	832.4 (127.4)	778.1 (98.2)	0.059
T2, ms	17.7 (4.4)	17.2 (3.49)	0.60
Iron-corrected liver T1 [¶] , ms	861.0 (99.2)	803.9 (106.6)	0.019
> 1016ms (>2SD from control mean)	5/52 (9.6%)	1/28 (3.6%)	0.66 ^ε
Average proton density fat fraction, %	4.9 (3.1 - 9.5)	3.7 (2.1 - 6.5)	0.18 ⁺
Extracellular volume, %	27.3 (23.0 - 31.2)	27.3 (17.6 - 33.6)	0.60 ⁺
Renal analysis			
T1 map analysis			
Average cortex, ms	1597.5 (91.2)	1523.1 (65.5)	0.0003
> 1652 ms (>2SD from control mean))	15/51 (29.4%)	0/28 (0.0%)	0.001 ^ε
Average corticomedullary differentiation, ms	385.4 (335.8 - 456.4)	470.8 (431.5 - 496.3)	0.0002 ⁺
Brain analysis^{&}			
T2-FLAIR volumes			
White matter hyperintensities, mm ³	2305.0 (1402.0-4021.0)	1457.0 (654.2-2700.5)	0.085 ^{&}
Periventricular white matter hyperintensities, mm ³	1884.0 (1172.0-3303.0)	1305.0 (525.0-2284.8)	0.066 ^{&}
Deep white matter hyperintensities, mm ³	330.5 (141.0-863.0)	213.0 (83.5-416.8)	0.20 ^{&}
Susceptibility-weighted imaging, T2*			
Left thalamus, ms	44.2 (42.0 - 46.1)	42.8 (39.9 - 45.3)	0.047 ^{&}
Right thalamus, ms	43.9 (41.7 - 45.8)	42.4 (40.2 - 45.0)	0.034 ^{&}
Left and right thalamus	43.9 (42.0 - 45.8)	42.6 (40.3 - 45.2)	0.022 ^{&}
Diffusion weighted imaging, Mean diffusivity			
Right posterior thalamic radiation, x10 ⁻⁶ mm ² /s	842.0 (804.5 - 871.2)	813.0 (787.0 - 832.8)	0.20 ^{&}
Left posterior thalamic radiation, x10 ⁻⁶ mm ² /s	831.0 (814.5 - 851.5)	811.0 (792.2 - 828.8)	0.042 ^{&}
Right sagittal stratum, x10 ⁻⁶ mm ² /s	840.0 (799.5 - 863.5)	813.0 (789.2 - 828.5)	0.022 ^{&}
Left sagittal stratum, x10 ⁻⁶ mm ² /s	789.0 (776.5 - 814.0)	787.0 (767.2 - 791.5)	0.078 ^{&}
Left and right (averaged) sagittal stratum, x10 ⁻⁶ mm ² /s	810.0 (791.0 - 834.0)	791.5 (779.5-808.8)	0.020 ^{&}
Data are median (IQR) for parametric data and mean (SD) for non-parametric data, and n/N (%), where N is the total number of participants with available data. p-values from independent t-test, Mann-Whitney U test (+), or Fisher's exact test (ε). Brain image derived phenotypes (IDPs) were Gaussianised and deconfounded for typical brain confounders. p-values for brain measurements were derived from a Gaussianised			

deconfounded model (&) and relate to independent Student's t-test comparison of this data. Raw data are presented in the table for ease of interpretation. All other parameters are listed in the appendix Table 2. ¶An in-house algorithm was used to calculate iron-corrected T1, so these values cannot be compared to the Liver*MultiScan* cT1. FLAIR = Fluid attenuated inversion recovery. LV =left ventricle. LGE = Late gadolinium enhancement. RV = right ventricle. Control subjects were matched for co-morbidities as closely as possible.

Table 3. Spirometry and cardiopulmonary exercise test results from patients and controls

Spirometry	COVID	CONTROL	p-value
FVC, % predicted	108.3 (22.8)	131.4 (21.8)	<0.0001
< 80%	7/56 (12.5%)	0/28	0.090 ^ε
FEV ₁ , % predicted	101.4 (19.7)	118.7 (22.1)	0.0004
< 80%	6/56 (10.7%)	1/28 (3.6%)	0.42 ^ε
FEV ₁ /FVC	0.77 (0.73 - 0.80)	0.75 (0.70 - 0.78)	0.027 ⁺
FEF ₂₅ , % predicted	97.0 (27.6)	110.1 (30.4)	0.020
FEF ₅₀ , % predicted	81.0 (23.2)	86.9 (24.5)	0.13
FEF ₇₅ , % predicted	54.5 (42.8 - 70.0)	54.0 (48.5 - 69.5)	0.60 ⁺
Peak expiratory flow, % predicted	105.7 (27.7)	114.5 (24.7)	0.16
Cardiopulmonary exercise test			
VO ₂ peak, % of predicted VO ₂ max	80.5 (23.1)	112.7 (27.0)	<0.0001
< 80%	28/51 (54.9%)	2/27(7.4%)	<0.0001 ^ε
Anaerobic threshold (% of predicted VO ₂ max)	40.7 (36.2 – 47.5)	46.8 (43.3 – 51.3)	0.0005 ⁺
VE/VCO ₂ Slope	33.4 (29.2 - 40.3)	28.2 (26.7 - 30.0)	<0.0001 ⁺
Oxygen Uptake Efficiency Slope	1.9 (1.6 - 2.4)	2.7 (2.0 - 3.2)	0.001 ⁺
Data are median (IQR) for parametric data and mean (SD) for non-parametric data, and n/N (%), where N is the total number of participants with available data. p-values from independent Student's t-test, Mann-Whitney U test (+), or Fisher's exact test (ε). FVC = Forced vital capacity. FEV1 = Forced expiratory volume in 1 second. FEF25, FEF50, FEF75 = Forced expiratory flow at 25%, 50% and 75% of forced expiration, respectively. VO ₂ = oxygen consumption. VE/VCO ₂ = ventilatory equivalent for carbon dioxide. Control subjects were matched for co-morbidities as closely as possible.			

Table 4. Anxiety (GAD-7), depression (PHQ-9), quality of life (SF-36) and symptom (dyspnoea, fatigue) burden in patients and controls.

	COVID	CONTROL	p-value
GAD-7			
Score	2.0 (0.0 - 7.5)	0.5 (0.0 - 4.3)	0.066 ⁺
0 - 5 (None - Mild)	37/57 (64.9%)	27/30 (90%)	
6 - 10 (Moderate)	13/57 (22.8%)	2/30 (6.7%)	
11 - 15 (Moderate - Severe)	4/57 (7.0%)	1/30 (3.3%)	
≥16 (Severe)	3/57 (5.3%)	0/30 (0.0%)	
Moderate or worse anxiety			
<6 (None - Mild)	37/57 (64.9%)	27/30 (90.0%)	0.012 ^ε
≥6 (Moderate or more)	20/57 (35.1%)	3/30 (10.0%)	
PHQ-9			
Score	3.0 (1.0 - 7.5)	1.5 (0.0 - 5.0)	0.009 ⁺
0 - 5 (None - Mild)	35/57 (61.4%)	25/30 (83.3%)	
6 - 10 (Moderate)	12/57 (21.1%)	5/30 (16.7%)	
11 - 15 (Moderate - Severe)	9/57 (15.8%)	0/30 (0.0%)	
≥16 (Severe)	1/57 (1.8%)	0/30 (0.0%)	
Moderate or worse mood symptoms			
<6 (None - Mild)	35/57 (61.4%)	25/30 (83.3%)	0.036 ^ε
≥6 (Moderate or more)	22/57 (38.6%)	5/30 (16.7%)	
SF-36 Domains			
Physical Functioning	65.0 (45.0 - 90.0)	92.5 (83.8 - 100.0)	<0.0001 ⁺
Role Limitations Due to Physical Health	25.0 (0.0 - 75.0)	100.0 (100.0 - 100.0)	<0.0001 ⁺
Role Limitations Due to Emotional Health	33.3 (0.0 - 100.0)	100.0 (100.0 - 100.0)	<0.0001 ⁺
Energy	45.0 (25.0 - 70.0)	65.0 (55.0 - 80.0)	<0.0001 ⁺
Emotional Well-Being	76.0 (62.0 - 88.0)	84.0 (72.0 - 92.0)	0.044 ⁺
Social Functioning	50.0 (37.5 - 87.5)	100.0 (62.5 - 100.0)	0.0002 ⁺
Pain	67.5 (35.0 - 90.0)	85.0 (67.5 - 100.0)	0.003 ⁺

General Health	68·8 (43·8 - 81·3)	75·0 (60·9 - 87·5)	0·022 ⁺
Dyspnoea - 12 symptom score			
Median (IQR)	4·0 (1·0 - 11·0)	0·0 (0 -1·5)	<0·0001 ⁺
Fatigue Severity Scale			
Median (IQR)	34 (18-49)	17 (11-24)	0·001 ⁺
≥4	30/55 (54·5%)	5/29 (17·2%)	0·010 ^ε
Medical Research Council Scale			
MRC grade 2 - 5	36/56 (64·3%)	3/29 (10·3%)	<0·0001 ^ε
Data are median (IQR) and n/N (%), where N is the total number of participants with available data. p-values from Mann-Whitney U test (⁺) or Fisher's exact test (^ε). GAD-7 = Generalised anxiety disorder-7 assessment. PHQ-9 = Patient health questionnaire-9 assessment. SF-36 = Short form 36. MRC = Medical Research Council Scale. Control subjects were matched for co-morbidities as closely as possible.			

Systemic effects of COVID-19 and relationship with persistent inflammatory response

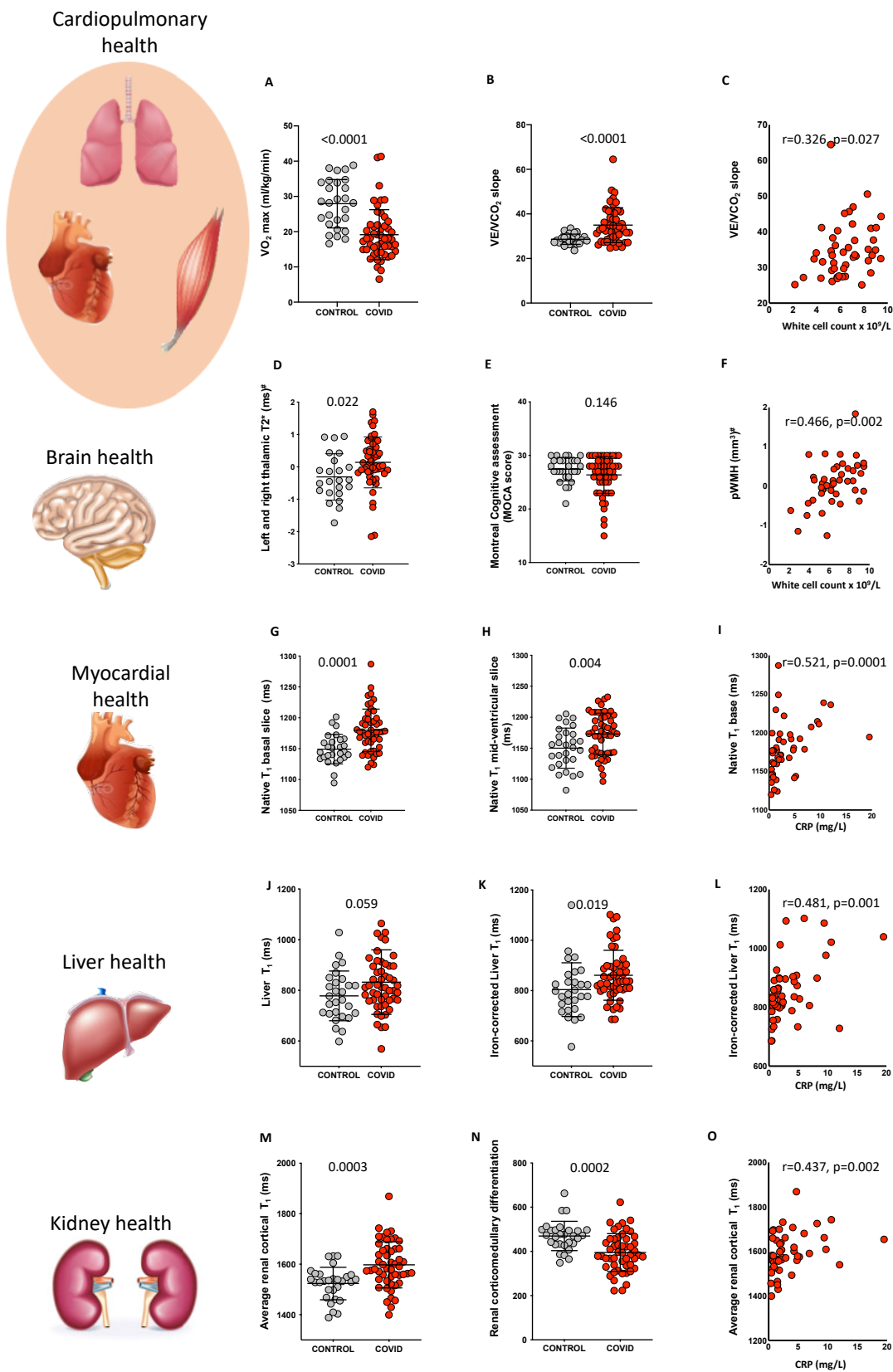


Figure 1. Systemic effects of COVID-19 and relationship with inflammatory response. A, B: Comparison of cardiopulmonary exercise test (CPET) parameters (VO_2 max and VE/VCO_2) between comorbidity-matched control and COVID-19 survivors. C: Relationship between VE/VCO_2 and white cell count in COVID-19. D, E: Comparison of susceptibility weighted $T2^*$ signal (left and right thalamus) and MoCA scores between control and COVID-19 survivors. F: Relationship between periventricular white matter hyperintensity volume (pWMH's) volume and white cell count in COVID-19. G, H: Comparison of myocardial native $T1$ (base and mid ventricle) between control and COVID-19 survivors. I: Relationship between basal native $T1$ and C-reactive protein (CRP). J, K: Comparison of liver $T1$ and iron-corrected liver $T1$ between control and COVID-19 survivors. An in-house algorithm was used to calculate iron-corrected $T1$, so these values cannot be compared to the *LiverMultiScan* $cT1$. L: Relationship between iron-corrected liver $T1$ and CRP in COVID-19. M, N: Comparison of average cortical kidney $T1$ and corticomedullary differentiation in control and COVID-19 survivors. O: Relationship between average cortical kidney $T1$ and CRP in COVID-19 (p-values for comparisons are from Student's t-tests for all variables; Spearman's correlation coefficient and p-values are reported for correlations, # signifies p-values were derived from comparison of variables that were Gaussianised and deconfounded).

Effects of COVID-19 on quality of life and mental health

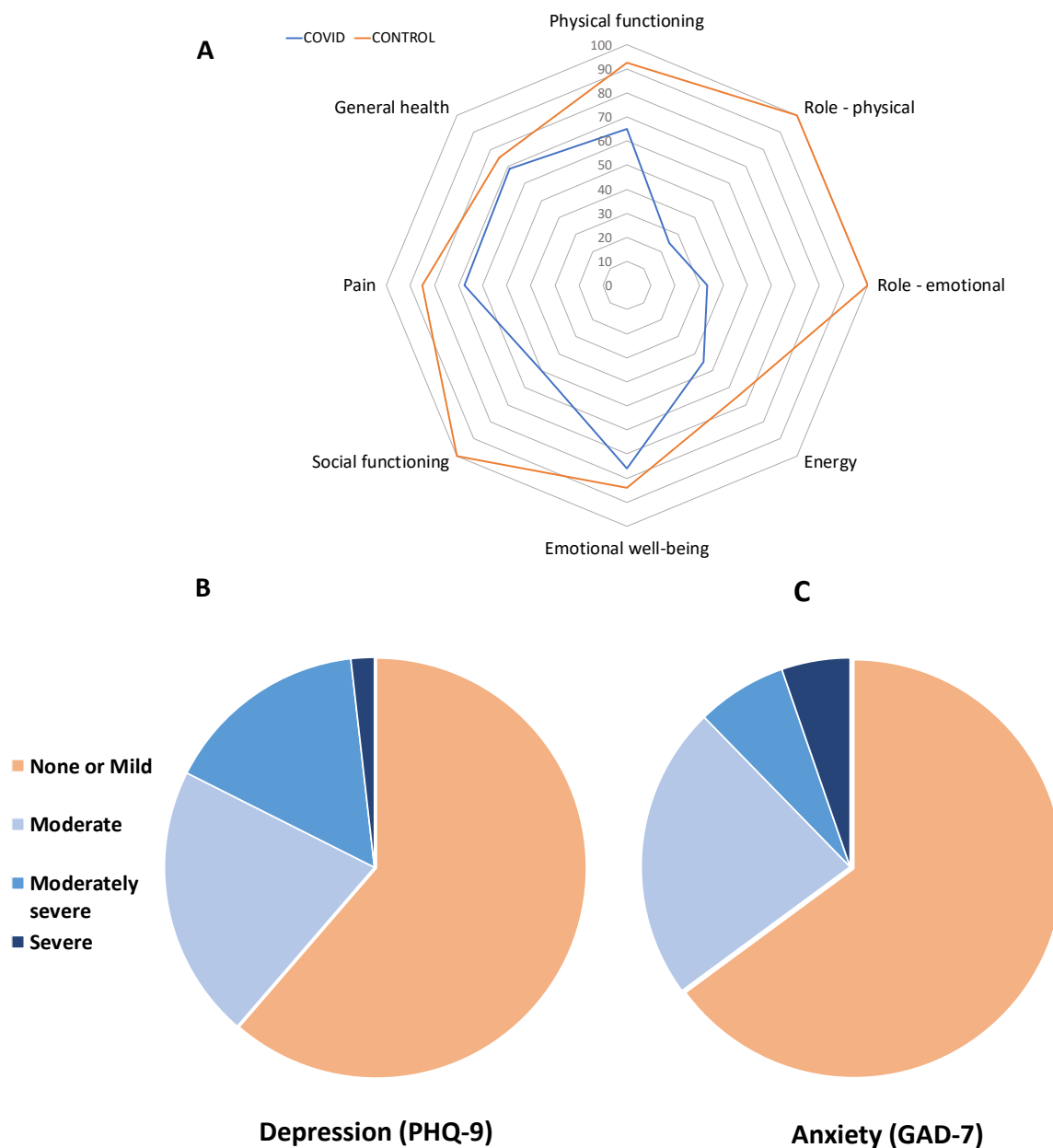


Figure 2 A: Quality of life (Short Form-36) radar plot for COVID-19 survivors and controls. B,C: Burden of depression and anxiety among patients with COVID-19.

A: The radar plot demonstrates that patients with COVID-19 (blue line) were more likely to experience impairment in energy, general health, physical health, social and emotional well-being and increased pain when compared to controls (orange line). Both physical and emotional factors caused significant role limitations among patients. B, C: Moderate to severe self-reported symptoms of depression and anxiety were also reported by a third of patients who were hospitalised with COVID-19.