

1 **Antivenom accessibility impacts mortality and severity of Brazilian snake**
2 **envenomation: a geospatial information systems analysis**

3
4
5 Authors:

6 Jinny Jing Ye¹, João Felipe Hermann Costa Scheidt², Luciano de Andrade², Thiago
7 Augusto Hernandez Rocha³, Hui Wen Fan⁴, Wuelton Monteiro^{5,6}, Ricardo Palacios⁷,
8 Catherine Ann Staton^{1,8}, João Ricardo Nickenig Vissoci^{1,8}, Charles John Gerardo¹

9
10 Affiliations:

11 ¹ Duke University Medical Center, Department of Surgery, Division of Emergency
12 Medicine, Durham, North Carolina, United States of America;

13 ² State University of Maringá, Department of Medicine, Maringá, Parana, Brazil;

14 ³ Federal University of Minas Gerais, Belo Horizonte, Minas Gerais, Brazil;

15 ⁴ Butantan Institute, São Paulo, São Paulo, Brazil;

16 ⁵ State University of Amazonas, Manaus, Amazonas, Brazil;

17 ⁶ Tropical Medicine Foundation Dr. Heitor Vieira Dourado, Manaus, Amazonas, Brazil;

18 ⁷ Clinical Trials and Pharmacovigilance Center, Instituto Butantan, São Paulo, Brazil;

19 ⁸ Duke Global Health Institute, Durham, North Carolina, United States of America;

20
21 Author Disclosure Information:

22 Dr. Catherine Ann Staton would like to disclose salary support from the National
23 Institutes of Health Fogarty International Center K01- TW010000-01A1 (PI Staton);

24 Dr. Charles John Gerardo: Salary support BTG International Inc;

25 Jinny Jing Ye: Project funding from Duke Brazil Initiative Grant;

26
27 Abstract: 333 words

28 Plain text: 1,515 words

29 Tables: 3

30 Figures: 6

31 References: 21

32
33 Corresponding author:

34 Professor João Ricardo Nickenig Vissoci

35 Duke Emergency Medicine, Duke University Medical Center

36 Durham, North Carolina, 27703, United States of America

37 jnv4@duke.edu

38
39
40

41 **Abstract**

42

43 **Background**

44 In 2017, the World Health Organization declared the snakebite envenomation as a
45 neglected tropical disease. Annually, snakebite envenomation causes approximately
46 400,000 permanent disabilities and 95,000 deaths worldwide. People with the greatest
47 risk of envenomation lack access to adequate health care, including treatment with
48 antivenom. We developed an analysis of accessibility to antivenom in Brazil in order to
49 verify the impacts on mortality.

50

51 **Methods and Findings**

52 Information about number of accidents, deaths, antivenom, medical assistance, and
53 species, were retrieved from the Brazilian Health Informatics Department (DATASUS)
54 from 2010 to 2015 and analyzed using geostatistics to evaluate the association between
55 snakebite accidents and mortality. An Spatial analysis using Global Moran's I was
56 performed in order to verify the presence of spatiality as an independent variable to the
57 distribution of the accidents. In addition, we also tested three different analysis of
58 regression using Ordinary Least Square (OLS), Spatial Error, and Geographically
59 Weighed Regression (GWR), together with the information obtained from the DATASUS
60 and sociodemographic indicators, to verify the spatial-temporal distribution of
61 envenomation cases and time to reach the healthcare centers. The regression
62 presenting the lowest Akaike Criterion Information (AIC), highest adjusted R^2 , and
63 variables with $p < 0.05$ was selected to represent our model. Lastly, the accessibility
64 index was performed using 2-step floating catchment area based on the amount of
65 hospital beds and inhabitants. This study revealed 141,039 cases of snakebites, 598
66 deaths, and mortality rate of 3.13 per 1,000,000 inhabitants. Moreover, GWR presented
67 the best fit (AIC = 55477.56; adjusted $R^2 = 0.55$) and showed that illiteracy, income,
68 percentage of urban population, percentage of antivenom, accessibility index for
69 hospital beds with antivenom, proportion of cases with more than 3 hours to reach
70 healthcare are correlated with the mortality rate by snakebite ($p < 0.05$).

71

72 **Conclusion**

73 This study identified regions affected by snakebite and how the accessibility to
74 antivenom treatment plays an important role in the mortality in Brazil. Public
75 interventions can be located to those most vulnerable regions in order to improve the
76 accident outcome.

77

78 **Keywords:** snake bites, health services accessibility, spatial analysis, poisoning,
79 epidemiology

80

81 **Introduction**

82

83 Snake envenomation is a neglected tropical disease of global importance (1).
84 Estimations around the world are between 1.2 and 5.5 million bites, 421,000
85 envenomations, 20,000-95,000 deaths, and 400,000 permanent disabilities annually (2).
86 The morbidity and mortality related to this disease primarily impacts resource-limited
87 countries as well as those with lower income earning and other socioeconomic
88 indicators of poverty (3).

89 In Brazil between 2001 and 2012, 1,192,667 incidents and 2,664 deaths resulting
90 from terrestrial venomous animals (snakes, scorpions, bees, spiders, and caterpillars)
91 were reported. Of these, 28% of all incidences and 54% of deaths were attributed to
92 snake envenomation (4). Of the reported snakebites, 70% of them were from the
93 Bothrops genus. Bothrops envenomation can cause many clinically significant effects
94 from local swelling and bleeding to muscle necrosis, acute kidney injury and cerebral
95 hemorrhage (5) (6). Thus, it becomes important for victims to reach health assistance in
96 time.

97 Access to snake-specific antivenom is limited because of expensive
98 manufacturing and long transport time to healthcare facility (7). Feitosa et al. 2015
99 found delays in healthcare access in the Amazon is associated with greater severity and
100 mortality related to snake envenomation (8). Additionally, socioeconomic inequalities
101 have also been linked with lower access health care (9). There is substantial research
102 on the uneven distribution of health care facilities in Brazil (10). However, there is no
103 analysis on accessibility to healthcare and its impacts on snakebite mortality rates in
104 Brazil. Besides, it has not yet been reported how social inequalities are associated with
105 snakebite outcomes.

106 Therefore, the aim of this study is to analyze the accessibility to antivenom taking
107 into the account the sociodemographics indicators in Brazil in order to verify its impacts
108 on snakebite envenomation mortality using spatial analysis.

109

110 **Methods**

111 **Study Design**

112 This study used cross-sectional data on country-wide snakebite envenomations
113 from 2010 to 2015 from National System Identification of Notifiable Diseases (SINAN)
114 stored at DATASUS. We conducted an exploratory spatial analysis to evaluate the
115 geospatial association of snake envenomation mortality in Brazil with socioeconomic
116 predictors (illiteracy, income, percentage of urban area, and human development
117 index), and healthcare access predictors (number of beds, hospitals and health
118 professionals, quantity of antivenom administrated, antivenom coverage, and time to
119 reach the healthcare centers).

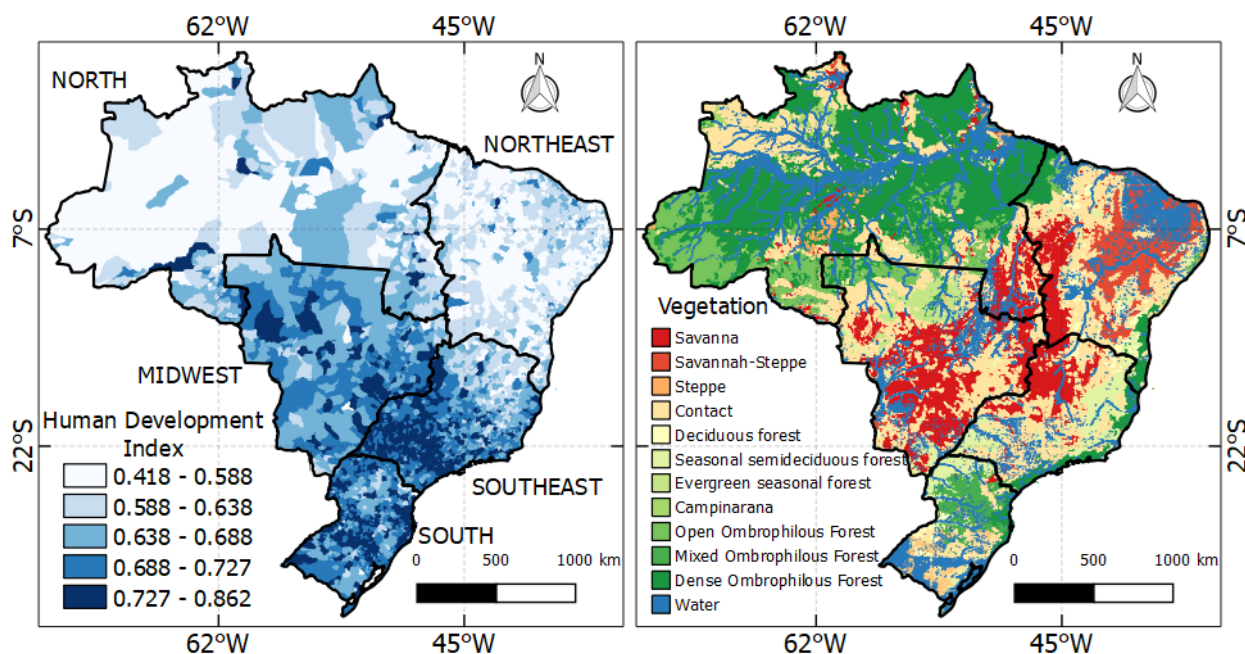
120

121 Study population and location

122 Brazil has a population of 190,732,694 people distributed to 5 regions (North,
 123 Northeast, Midwest, Southeast and South) (Figure 1)(11). In recent years, the Brazilian
 124 economy has grown rapidly, and the country's gross domestic product (GDP) is
 125 currently the ninth largest globally (9). Brazil has also faced an economic and political
 126 crisis since 2010. Despite the growth in the recent years, not all segments of the
 127 Brazilian population have benefited uniformly from this rapid development, resulting in
 128 substantial income inequality within and between regions of the country, as depicted in
 129 Figure 1 (9).

130

131



132

133 Figure 1. Brazilian gross domestic product on the left and the vegetation on the right.

134

135 Data sources and variables

136

137 Data extraction

138 Data regardless sociodemographic indicators were extracted from the Brazilian
 139 Institute of Geography and Statistic 2010 Census (11), while information about
 140 healthcare centers were obtained from DATASUS and the National Register of Health
 141 Facilities (CNES).

142

143 Snakebite envenomation data

144 The number of envenomations, hospitalizations from envenomations, deaths
 145 from envenomations, time to reach healthcare centers and number of envenomations
 146 that were treated with antivenom were collected from SINAN (12). Snakebite outcomes

147 included: mortality, systemic and local complications. An aggregate indicator for
148 snakebite negative outcomes was generated by a sum of the municipality level mortality
149 and complications. Snakebite specific healthcare indicators were: proportion of cases
150 notified more than 3 hours to reach healthcare assistance, and proportions of cases
151 with notified antivenom usage.

152

153 Data analysis

154 All analyses in this study were conducted at the municipality-level. Snakebite
155 frequency and complications, socioeconomic indicators and healthcare access were
156 summarized using descriptive statistics.

157

158 Availability of care in hospitals with antivenom

159 We calculated the availability of hospitals with antivenom by mapping the
160 facilities that received antivenom obtained from the Butantã Institute, agency
161 responsible for producing and distributing antivenom across the country. To evaluate
162 the accessibility to hospitals with antivenom, we used the two-step floating catchment
163 area (2SFCA) method (13). The 2SFCA creates an index of hospitals with antivenom
164 weighted by population in two concurrent steps. In the first step, a buffer was created
165 with a Euclidean 120 kilometer (km) radius surrounding each hospital with antivenom.
166 This buffer was created to collect the population potentially covered in all locations (k)
167 within the threshold. The 120 km range limit was used to estimate a travel distance of
168 two hours to the nearest hospital by car or public transport. The second step consists of
169 summing up the initial ratios in overlapped service areas to measure accessibility for a
170 demand location, where residents have access to multiple supply locations. These
171 steps produced an accessibility index of hospital bed availability with antivenom for
172 each municipality. A higher accessibility index indicates more hospital bed available with
173 antivenom for a given municipality.

174

175 Spatial regression

176 The Ordinary Least Square (OLS), Spatial Error and geographically weighted
177 regression (GWR) were used to verify the regression with the best fit capable to
178 elucidate the correlation between sociodemographic and healthcare indicators with the
179 mortality rates by snakebite. The regression with the highest adjusted R^2 , lowest AIC,
180 and significant variables ($p < 0.05$) was chosen as the main model for the study. The
181 spatial autocorrelation and the OLS model were processed using GeoDa software
182 version 1.10.0.8 (Laboratory of Spatial Analysis, University of Illinois at Urbana-
183 Champaign, Urbana, USA). The GWR model was calculated and implemented using R
184 Studio. The maps were generated using QGIS version 2.14.23.

185

186

187

Table 1. Data source and selected variables for the analysis.

Source	Variables	Website
DATASUS SINAN	Snakebite envenomation data: Frequency of cases by municipality; Frequency of hospital admissions by municipalities; Frequency of deaths by municipality; Frequency of local and systemic complications by municipality; Frequency of cases receiving antivenom by municipality; Frequency of cases reaching the hospital with antivenom with time > 3 hours.	http://www2.datasus.gov.br/DATASUS/index.php?area=0203
CNES and Butantã Institute	Availability of care in hospitals with antivenom; Geolocation and hospital beds of all hospitals in the country; List of hospitals receiving antivenom.	http://cnes.datasus.gov.br/
IBGE	Socioeconomic indicators: Average income per capita by municipality; Proportion of urban population by municipality; Illiteracy rates by municipality.	https://atlasescolar.ibge.gov.br/

DATASUS: Departamento de Informática do Sistema Único de Saúde do Brasil; SINAN: Sistema de Informação de Agravos de Notificação; CNES: Cadastro Nacional de Estabelecimentos de Saúde; IBGE: Instituto Brasileiro de Geografia e Estatística.

188

189

190 Results

191

192 Between 2010 and 2015, there were a total of 141,039 reported cases of snake
193 envenomation. 598 resulted in death and 27,047 had systemic complications from
194 envenomation. The most frequent cases occurred in the North region (50,102 bites),
195 followed by Southeast (32,474 bites), and least was the South region (12,130 bites).
196 The North region was also in the lead regions with deaths, followed by the Northeast,
197 similar pattern observed to Systemic and Local complications (Table 1).

198 According to the registry, the majority of snakebite envenomation received
199 antivenom at some point during their care trajectory. However, the North, Northeast and
200 Midwest had higher proportion of cases with more than 3 hours to reach healthcare
201 (Table 1). Similarly, these were the same regions with lower number of hospitals with
202 lower scores for accessibility for antivenom per population.

203

204

205

Table 2. Municipalities indicators of sociodemographics and snakebite envenomations information of each region in Brazil from 2010-2015.

Indicators	North	Northeast	Midwest	Southeast	South	Amazon
Population	15.86mi (9.31%)	53.08mi (27.83%)	14.05mi (7.37%)	80.35mi (42.12%)	27.38mi (14.35%)	3.48mi (1.82%)
Percentage of Urban areas	56.7%	55.2%	71.9%	75%	60.7%	83.4%
Envenomation	50,102 (35.52%)	31,075 (22.03%)	15,258 (10.81%)	32,474 (23.02%)	12,130 (8.60%)	8,480 (6.01%)
Deaths	181 (30.26%)	188 (31.43%)	61 (10.20%)	132 (22.07%)	36 (6.02%)	47 (7.85%)
Systemic complications	6,884 (28.62%)	5,895 (24.51%)	2,721 (11.31%)	6,815 (28.34%)	1,732 (7.20%)	1,603 (6.67%)
Proportions of cases with notified antivenom usage	47,459 (33.7%)	27,685 (19.6%)	14,490 (10.3%)	29,822 (21.2%)	11,047 (7.8%)	7,893 (6.04%)
Proportion of cases notified more than 3 hours to reach healthcare assistance	22,809 (16.6%)	9,485 (6.9%)	3,180 (2.31%)	5,143 (3.74%)	1,681 (1.22%)	4,413 (10.43%)
Number of hospitals with antivenom	231 (12.14%)	416 (21.91%)	189 (29.62%)	564 (26.42%)	502 (9.91%)	40 (2.10%)

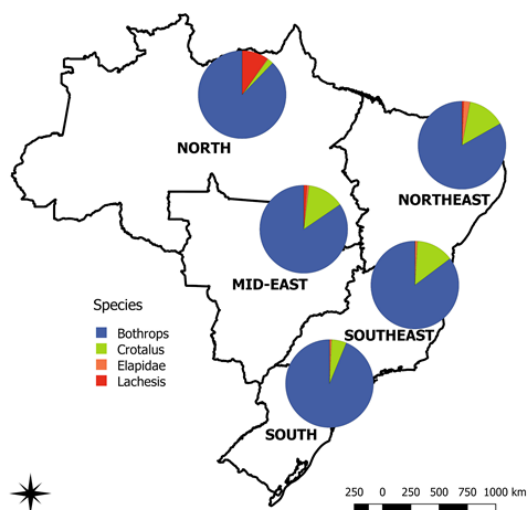
206

207

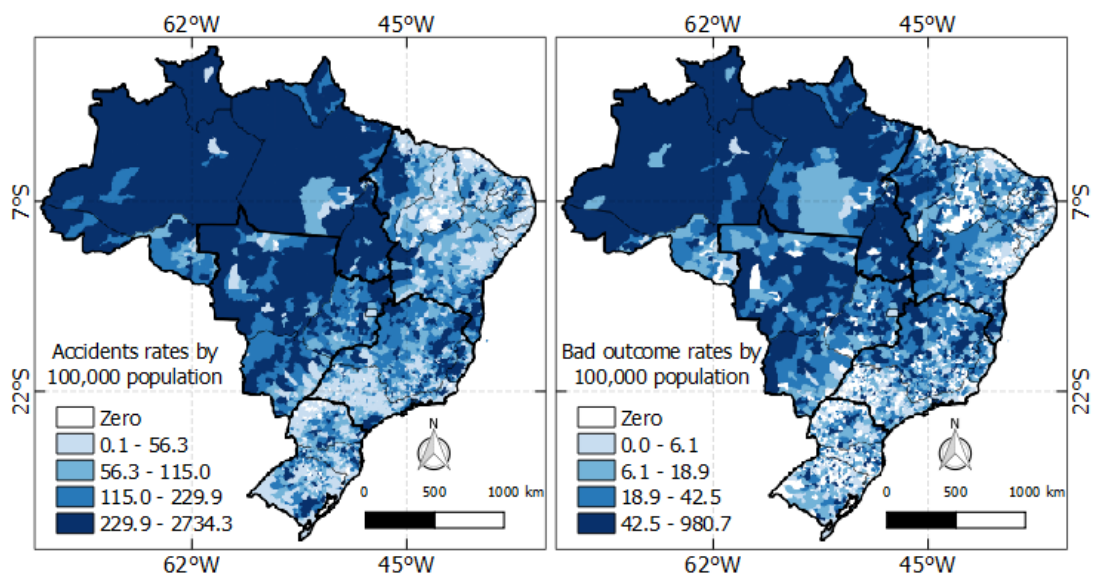
208

209

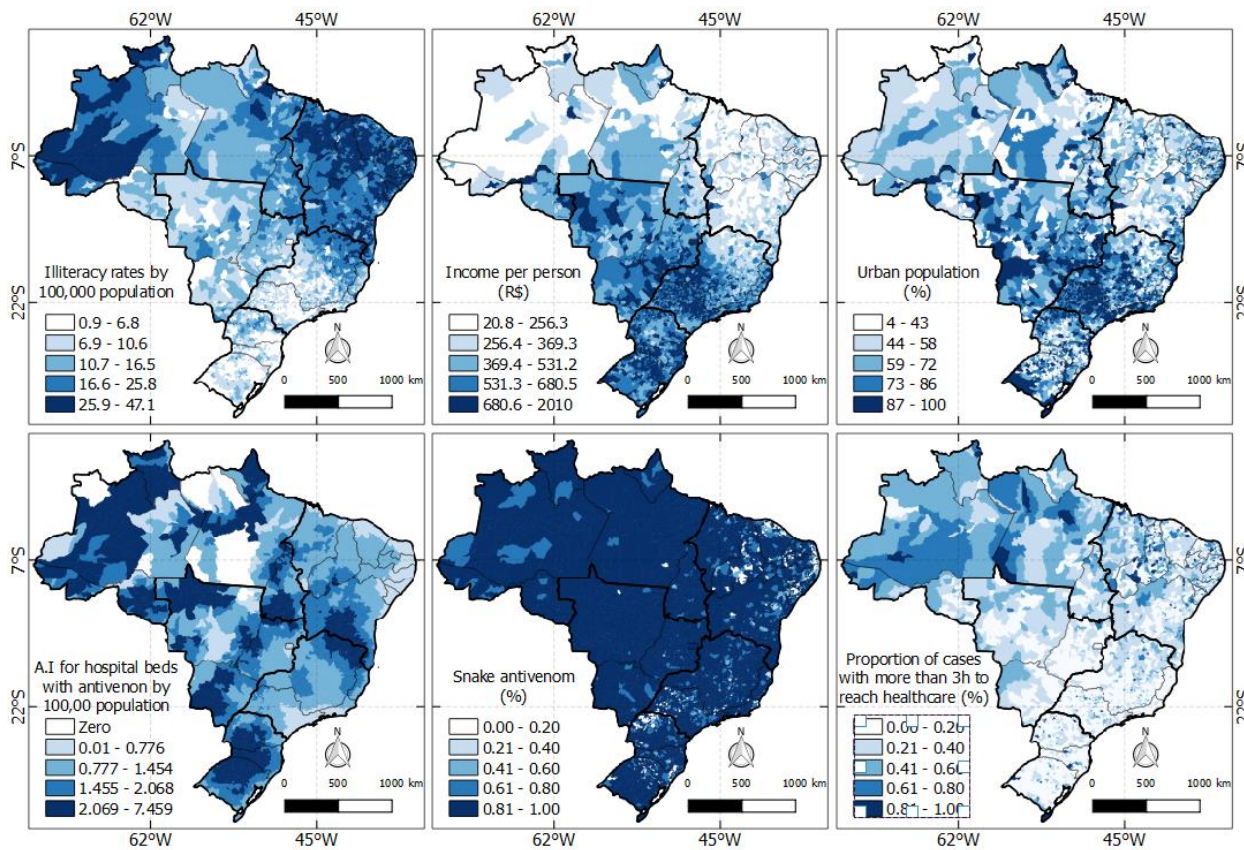
210



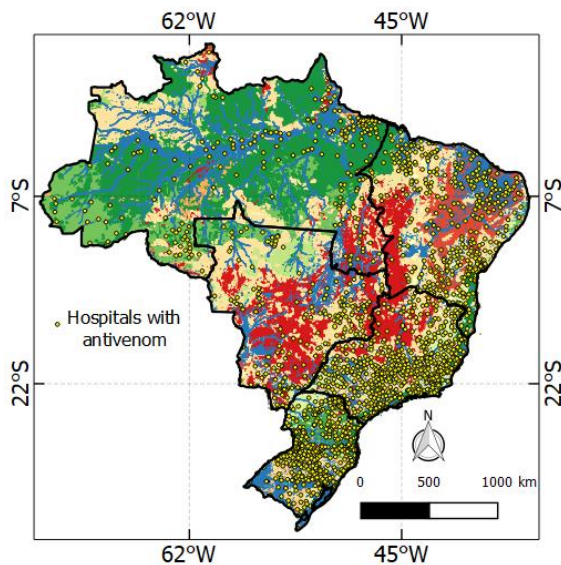
211
 212 Figure 2. Geographical distribution of snakebite occurrences by snake in Brazil from
 213 2010 to 2015.
 214



215
 216 Figure 3. Accidents and deaths per 100,000 inhabitants.
 217
 218
 219



220
 221 Figure 4. Population-level sociodemographic characteristics and distribution of hospital
 222 resources throughout Brazil.
 223



224
 225 Figure 5. Hospitals with antivenom.
 226
 227

228

Table 3. Comparison between Ordinary Least Square (OLS), Spatial error and Global geographically weighed regression (GWR).

Variables	OLS			Spatial Error			GWR	
	Estimative	P	Standard error	Estimative	ρ	Standard error	Estimation Mean	Estimation standard deviation
Illiteracy	-0.64	<0.01	0.113	0.07	0.57	0.141	-0.67	1.84
Income	-0.05	<0.01	0.004	-0.02	<0.01	0.004	-0.04	0.06
Percentage of Urban area	-0.24	<0.01	0.035	-0.37	<0.01	0.034	-0.23	0.32
Antivenom	26.19	<0.01	2.338	13.58	2.20	0.0	26.17	24.75
Accessibility index	4.31	<0.01	0.780	1.30	1.28	0.311	4.25	21.12
Proportion of cases notified more than 3 hours to reach healthcare assistance	25.85	<0.01	2.900	9.94	2.64	0.0	25.71	23.75
AIC	58546.8			57231.8			55477.56	
Adjusted R ²	0.1127			0.3394			0.5581	

229

230

231

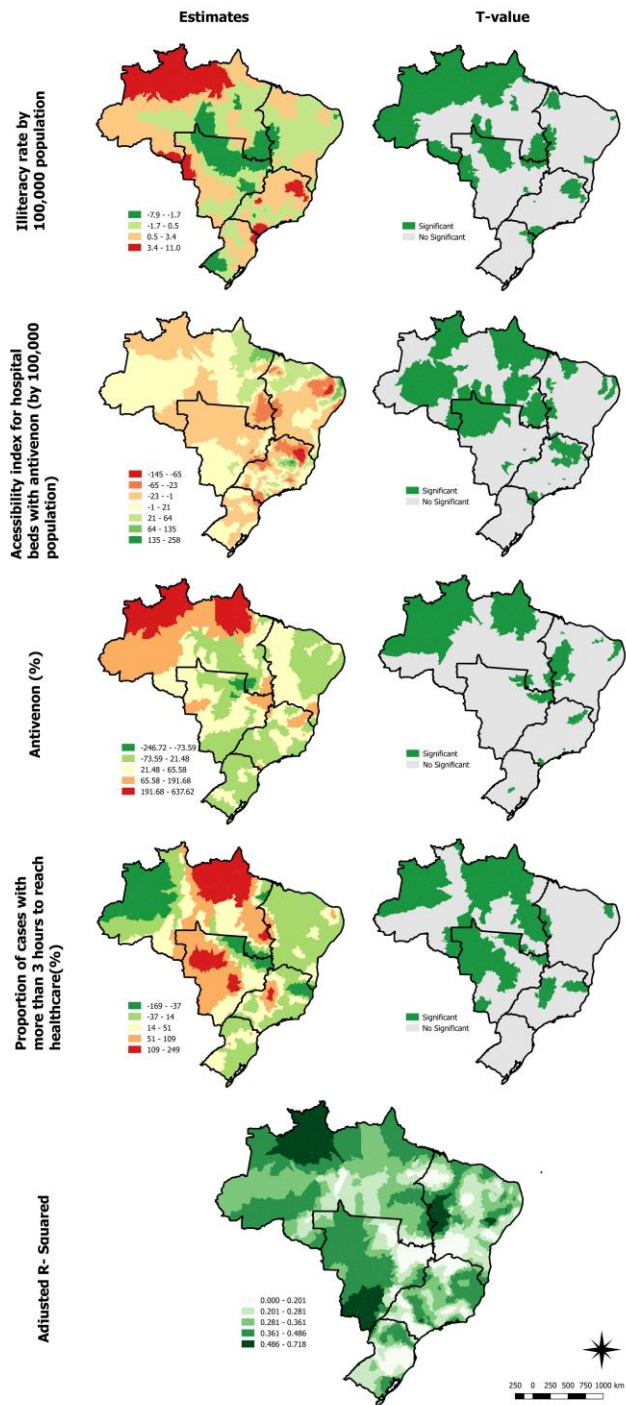


Figure 6. GWR results of significant variables related to the increasing rates of snakebite mortality.

232
233
234
235
236
237
238
239

240 Discussion

241
242 This study is the first nationwide analysis that evaluates the geospatial impact of
243 access to healthcare and antivenom on snakebite mortality. We found a heterogeneous
244 distribution of snakebite mortality and accessibility to healthcare. This is probably
245 attributed to Brazil's continental dimensions where there are several costumes and
246 cultures (14, 15).

247 However, the results showed that mortality particularly affected rural and
248 underdeveloped regions of the country. This geographical disparity is corroborated by
249 some studies that revealed that snakebite is a poverty disease and its mortality is
250 correlated with the workforce in agriculture (3, 16). Additionally, the GWR also showed
251 that low illiteracy, income, and percentage of urban area are related to the increased
252 snakebite mortality. Similar study conducted by Suraweera et al (2020) in India also
253 verified that these indicators are correlated with snakebite mortality (17).

254 Access to antivenom in Brazil varied across the nation with metropolitan areas in
255 the South and Southeast having abundant access compared to the Northwest. Reduced
256 access to antivenom in the North is associated with higher rates of mortality in our
257 study. These are well supplied with antivenom as informed by some studies (18, 19),
258 but the mortality stands out because of the difficulties to reach the healthcare centers,
259 mostly because the main means of locomotion in the amazon is by fluvial transport (20).
260 In addition, those patients that managed to reach healthcare assistance beyond 3 hours
261 were significantly higher in the north suggesting the struggles with the transport.

262 As for the majority of patients in the country, it was capable to look for health
263 assistance in 3 hours. Our finding is also consistent with findings in Costa Rica where
264 the majority of care received was within 2 hours, even in mountainous and rural regions
265 or other areas with high snakebite incidence. (21)

266 267 Limitations

268 First, although SINAN is intended to be a nationally comprehensive and accurate
269 database on important notifiable diseases, SINAN is as susceptible as other large
270 population-level databases to reliability and consistency of data collection. Additionally,
271 provider-level reporting of snakebites relies on accurate recognition and diagnosis.
272 Thus, underreporting may not capture the whole scope of this important neglected
273 tropical disease. Second, using a 120km radius to define the catchment area of public
274 hospitals may not be uniform considering rainforest or rural areas cover 60% of Brazil.
275 Despite these limitations, our findings are to our knowledge one of the first studies
276 highlighting the geographical variability of mortality snake envenomations in association
277 with access to antivenom and healthcare.

278
279

280 **Conclusion**

281 In Brazil low illiteracy, income, percentage of urban area, and accessibility to
282 antivenom and healthcare centers are related to the increasing of snakebite mortality.
283 It's noteworthy to mention that this paper provides regions that lack in those indicators
284 and might be useful for the development of better public actions in order to obtain more
285 favorable outcomes.

286

287 **References**

288

- 289 1. Ranawaka UK, Lalloo DG, de Silva HJ. Neurotoxicity in snakebite--the limits of
290 our knowledge. *PLoS Negl Trop Dis*. 2013;7(10):e2302.
- 291 2. Fox S, Rathuwithana AC, Kasturiratne A, Lalloo DG, de Silva HJ.
292 Underestimation of snakebite mortality by hospital statistics in the Monaragala District of
293 Sri Lanka. *Trans R Soc Trop Med Hyg*. 2006;100(7):693-5.
- 294 3. Harrison RA, Hargreaves A, Wagstaff SC, Faragher B, Lalloo DG. Snake
295 envenoming: a disease of poverty. *PLoS Negl Trop Dis*. 2009;3(12):e569.
- 296 4. Chippaux JP. Epidemiology of envenomations by terrestrial venomous animals in
297 Brazil based on case reporting: from obvious facts to contingencies. *J Venom Anim
298 Toxins Incl Trop Dis*. 2015;21:13.
- 299 5. Cruz LS, Vargas R, Lopes AA. Snakebite envenomation and death in the
300 developing world. *Ethn Dis*. 2009;19(1 Suppl 1):S1-42-6.
- 301 6. de Oliveiraa SS, de Souza Sampaioa V, Sachetta JdAG, Campos E, Fanc HW,
302 de Lacerdaa MVG, et al. Snakebites in the Brazilian Amazon: Current Knowledge and
303 Perspectives. 2016.
- 304 7. Chippaux JP. Estimating the global burden of snakebite can help to improve
305 management. *PLoS Med*. 2008;5(11):e221.
- 306 8. Feitosa EL, Sampaio VS, Salinas JL, Queiroz AM, da Silva IM, Gomes AA, et al.
307 Older Age and Time to Medical Assistance Are Associated with Severity and Mortality of
308 Snakebites in the Brazilian Amazon: A Case-Control Study. *PLoS One*.
309 2015;10(7):e0132237.
- 310 9. Rasella D, Basu S, Hone T, Paes-Sousa R, Ocké-Reis CO, Millett C. Child
311 morbidity and mortality associated with alternative policy responses to the economic
312 crisis in Brazil: A nationwide microsimulation study. *PLoS Med*. 2018;15(5):e1002570.
- 313 10. Garcia-Subirats I, Vargas I, Mogollon-Perez AS, De Paepe P, da Silva MR,
314 Unger JP, et al. Inequities in access to health care in different health systems: a study in
315 municipalities of central Colombia and north-eastern Brazil. *Int J Equity Health*.
316 2014;13:10.
- 317 11. IBGE. Instituto Brasileiro de Geografia e Estatística. Séries estatísticas & séries
318 históricas. Rio de Janeiro. 2018.

- 319 12. Bochner R, Fiszon JT, Machado C. A profile of snake bites in Brazil, 2001 to
320 2012. 2014.
- 321 13. Wang F, Luo W. Assessing spatial and nonspatial factors for healthcare access:
322 towards an integrated approach to defining health professional shortage areas. *Health*
323 *Place*. 2005;11(2):131-46.
- 324 14. United Nations DoEaSA, Population Division. World Population Prospects: The
325 2017 Revision. In: United Nations DoEaSA, Population Division, editor. 2017.
- 326 15. Bochner R. The international view of envenoming in Brazil: myths and realities.
327 *Journal of Venomous Animals and Toxins including Tropical Diseases*. 2013;19(1):29.
- 328 16. Babo Martins S, Bolon I, Chappuis F, Ray N, Alcoba G, Ochoa C, et al.
329 Snakebite and its impact in rural communities: The need for a One Health approach.
330 *PLoS Negl Trop Dis*. 2019;13(9):e0007608.
- 331 17. Suraweera W, Warrell D, Whitaker R, Menon G, Rodrigues R, Fu SH, et al.
332 Trends in snakebite deaths in India from 2000 to 2019 in a nationally representative
333 mortality study. *Elife*. 2020;9.
- 334 18. Gutiérrez JM, Williams D, Fan HW, Warrell DA. Snakebite envenoming from a
335 global perspective: Towards an integrated approach. *Toxicon*. 2010;56(7):1223-35.
- 336 19. Gutiérrez JM, Fan HW, Silvera CLM, Angulo Y. Stability, distribution and use of
337 antivenoms for snakebite envenomation in Latin America: Report of a workshop.
338 *Toxicon*. 2009;53(6):625-30.
- 339 20. Morgado AV, Portugal LdS, Mello AJR. Acessibilidade na Região Amazônica
340 através do transporte hidroviário. *Journal of Transport Literature*. 2013;7:97-123.
- 341 21. Hansson E, Sasa M, Mattisson K, Robles A, Gutiérrez JM. Using geographical
342 information systems to identify populations in need of improved accessibility to
343 antivenom treatment for snakebite envenoming in Costa Rica. *PLoS neglected tropical*
344 *diseases*. 2013;7(1):e2009.
- 345
- 346