

## Clinical, neuroimaging and molecular spectrum of *TECPR2*-associated hereditary sensory and autonomic neuropathy with intellectual disability

Sonja Neuser, MD<sup>1,\*</sup>, Barbara Brechmann<sup>2,3\*</sup>, Gali Heimer, MD, PhD<sup>4,5,\*</sup>, Ines Brösse, MD<sup>3</sup>, Susanna Schubert, PhD<sup>1</sup>, Lauren O'Grady, MS, CGC<sup>6</sup>, Michael Zech, MD<sup>7,8</sup>, Siddharth Srivastava, MD<sup>2</sup>, David A. Sweetser, MD, PhD<sup>6</sup>, Yasemin Dincer, MS<sup>9,10</sup>, Volker Mall, MD<sup>10,11</sup>, Juliane Winkelmann, MD<sup>7,8,12,13</sup>, Christian Behrends, PhD<sup>13</sup>, Basil T Darras, MD<sup>14</sup>, Robert J Graham, MD<sup>15</sup>, Parul Jayakar, MD, MS<sup>16</sup>, Barry Byrne, MD, PhD<sup>17</sup>, Bat El Bar-Aluma, MD<sup>4,5</sup>, Yael Haberman, MD, PhD<sup>4,5,18</sup>, Amir Szeinberg, MD<sup>4,5</sup>, Hesham Mohamed Aldhalaan<sup>19</sup>, Mais Omar Hashem, MD<sup>20</sup>, Amal Al Tenaiji<sup>21</sup>, Omar Ismayl<sup>21</sup>, Asma E. Al Nuaimi, MD<sup>21</sup>, Karima Maher<sup>21</sup>, Wen-Hann Tan, BMBS<sup>15</sup>, Gehad ElGhazali, MD, PhD<sup>21</sup>, Angelika Seitz, MD<sup>22</sup>, Mandy Krumbiegel, PhD<sup>23</sup>, Jens Meiler, PhD<sup>24,25</sup>, Fowzan S. Alkuraya, MD<sup>20,26</sup>, Rami Abou Jamra, MD<sup>1</sup>, Bernt Popp, MD<sup>1,#</sup>, Bruria Ben-Zeev, MD<sup>4,5,#</sup>, Darius Ebrahimi-Fakhari, MD, PhD<sup>2,#</sup>

<sup>1</sup> Institute of Human Genetics, University of Leipzig Medical Center, Leipzig, Germany

<sup>2</sup> Department of Neurology, The F.M. Kirby Neurobiology Center, Boston Children's Hospital, Harvard Medical School, Boston, USA

<sup>3</sup> Department of Pediatrics, Hospital for Children and Adolescents, Heidelberg University Hospital, Heidelberg, Germany

<sup>4</sup> Edmond and Lily Safra Children's Hospital, Sheba Medical Center, Ramat Gan, Israel

<sup>5</sup> Sackler Faculty of Medicine, Tel Aviv University, Tel Aviv, Israel

<sup>6</sup> Division of Medical Genetics and Metabolism, Department of Pediatrics, Massachusetts General Hospital, Boston, USA

<sup>7</sup> Institute of Neurogenomics, Helmholtz Zentrum München, Munich, Germany

<sup>8</sup> Institute of Human Genetics, Klinikum rechts der Isar, Technical University of Munich, Munich, Germany

<sup>9</sup> Lehrstuhl für Sozialpädiatrie, Technische Universität München, Munich, Germany

<sup>10</sup> Zentrum für Humangenetik und Laboratoriumsdiagnostik (MVZ), Martinsried, Germany

- <sup>11</sup> kbo-Kinderzentrum München, Munich, Germany
- <sup>12</sup> Lehrstuhl für Neurogenetik, Technische Universität München, Munich, Germany
- <sup>13</sup> Munich Cluster for Systems Neurology, Synergy, Munich, Germany
- <sup>14</sup> Department of Neurology, Boston Children's Hospital, Harvard Medical School, Boston, USA
- <sup>15</sup> Department of Anesthesia, Critical Care and Pain Medicine, Boston Children's Hospital, Harvard Medical School, Boston, USA
- <sup>16</sup> Nicklaus Children's Hospital, Miami, USA
- <sup>17</sup> Powell Gene Therapy Center, University of Florida, Gainesville, USA
- <sup>18</sup> Cincinnati Children's Hospital Medical Center and the University of Cincinnati College of Medicine, Cincinnati, USA
- <sup>19</sup> King Faisal Specialist Hospital and Research Center, Riyadh, Saudi Arabia
- <sup>20</sup> Department of Neuroscience, King Faisal Specialist Hospital and Research Center, Riyadh, Saudi Arabia
- <sup>21</sup> Sheikh Khalifa Medical City, Abu Dhabi, United Arab Emirates
- <sup>22</sup> Department of Diagnostic and Interventional Radiology, Heidelberg University Hospital, Heidelberg, Germany
- <sup>23</sup> Institute of Human Genetics, Friedrich-Alexander-Universität (FAU), Erlangen, Germany
- <sup>24</sup> Department of Chemistry, Vanderbilt University, Nashville, USA
- <sup>25</sup> Institute for Drug Discovery, Leipzig University Medical School, Leipzig, Germany
- <sup>26</sup> Department of Anatomy and Cell Biology, College of Medicine, Alfaisal University, Riyadh, Saudi Arabia

\*,# authors contributed equally to this work

Correspondence to:

Corresponding author: Sonja Neuser, MD

Corresponding author's address: Philipp-Rosenthal-Straße 55  
Institute of Human Genetics  
University of Leipzig Medical Center  
04103 Leipzig, Germany  
E-mail: [sonja.neuser@medizin.uni-leipzig.de](mailto:sonja.neuser@medizin.uni-leipzig.de)  
[s.neuser.md@gmail.com](mailto:s.neuser.md@gmail.com)  
phone: +49 341 97 23802

fax: +49 341 97 23819

## ABSTRACT

**PURPOSE:** Bi-allelic *TECPR2* variants have been associated with a complex syndrome with features of both a neurodevelopmental and neurodegenerative disorder. Here, we aim to provide a comprehensive clinical description and variant interpretation framework.

**METHODS:** Through an international collaboration, we identified 13 individuals from 12 families with bi-allelic *TECPR2*-variants. We systemically reviewed clinical and molecular data of this cohort and 11 cases previously reported. Phenotypes were standardized using Human Phenotype Ontology terms.

**RESULTS:** A cross-sectional analysis revealed global developmental delay/intellectual disability, muscular hypotonia, ataxia, hyporeflexia, respiratory infections and central/nocturnal hypopnea as core manifestations. A review of brain MRI scans demonstrated a thin corpus callosum in 59%. We evaluated 14 distinct variants. Missense variants in *TECPR2* are predominantly located in the N- and C-terminal regions containing  $\beta$ -propeller repeats. Despite constituting nearly half of disease associated *TECPR2* variants, classifying missense variants as (likely) pathogenic according to ACMG criteria remains difficult. We estimate a pathogenic variant carrier frequency of 1/1,221 in the general and 1/155 in the Jewish Ashkenazi population.

**CONCLUSION:** Based on clinical, neuroimaging and genetic data, we provide recommendations for variant reporting, clinical assessment, and surveillance/treatment of individuals with *TECPR2*-associated disorder. This sets the stage for future prospective natural history studies.

**KEYWORDS:** *TECPR2*, spastic paraplegia, sensory autonomic neuropathy, neurodevelopmental disorder, Human Phenotype Ontology

## CONFLICTS OF INTEREST

All authors involved in the study declare no conflicts of interest relevant to this study.

## INTRODUCTION

TECPR2 belongs to the tectonin  $\beta$ -propeller repeat-containing protein family and is implicated in the autophagy pathway.<sup>1,2</sup> Autophagy is critical to the development and function of the central nervous system. Loss-of-function variants in several genes of the autophagy pathway lead to both neurodevelopmental and neurodegenerative diseases.<sup>3-5</sup>

In 2012, Oz-Levi et al. identified the homozygous *TECPR2* variant c.3416del, p.(Leu1139Argfs\*75) in five individuals from three Jewish Bukharian families and classified the syndrome as a novel subtype of hereditary spastic paraplegias (HSP) (SPG49; OMIM #615000).<sup>6</sup> To date, 11 individuals with bi-allelic *TECPR2* variants have been reported in the literature.<sup>6-10</sup> All individuals showed muscular hypotonia and most had global developmental delay followed by intellectual disability. Only a subset of individuals displayed progressive spasticity as a characteristic HSP symptom. An autonomic and sensory neuropathy with respiratory, gastrointestinal and cardiovascular system involvement was present in a subset of individuals and central apnea was found to account for a large part of the morbidity.<sup>7,10</sup>

Beside two founder variants (c.3416del, p.(Leu1139Argfs\*75) in the Jewish Bukharian background and c.1319del, p.(Leu440Argfs\*19) in the Jewish Ashkenazi background), two other truncating and three missense *TECPR2* variants have been associated with the disease. Expression analyses in cell lines transfected with the p.(Leu1139Argfs\*75) variant indicated escape from nonsense mediated RNA-decay (NMD) but degradation of the truncated protein.<sup>6</sup> Functional data is largely missing for other described variants. This poses challenges for the interpretation of missense variants, for which normal expression of an altered protein is expected. All variants have been reported based on clinical overlap but have yet to be scored through the five-tier variant classification system recommended by the American College of Medical Genetics and Genomics (ACMG).<sup>11</sup> The lack of functional data and reliable variant classification have prevented an estimation of carrier frequencies and disease incidence, genotype-phenotype correlation analyses and the ability to make a genetic diagnosis in novel cases.

Through an international collaboration, we assembled a cohort of 13 individuals from 12 families of different ethnic backgrounds with known/novel disease-associated *TECPR2*-variants. Based on a detailed review of the published cases and comparison with the herein described individuals, we provide a systematic clinical synopsis based on Human Phenotype Ontology (HPO).<sup>12</sup> We provide recommendations for surveillance and symptomatic treatment. An annotation and classification of all disease-associated variants according to the current ACMG recommendations is provided.<sup>11</sup> Using public databases, we estimate carrier frequencies and disease incidence. Based on this curated phenotype and genotype dataset, we propose a framework for reporting and validating *TECPR2* variants.

## **MATERIALS AND METHODS**

### **Ethics Statement**

The study adheres to the principles set out in the Declaration of Helsinki. The following Research Ethics Committee approved genetic testing in research setting within the study: Ethical Committee of the Medical Faculty, Leipzig University (P1), Institutional Review Board at Boston Children's Hospital (IRB-P00033016; P2, P4 and P5), Ethics Review Board of Technical University of Munich (P3), Institutional Review Board of King Faisal Specialist Hospital and Research Center (KFSRHC RAC# 2080006 and 2121053; P7, P8 and P13). Genetic testing for P6, P9, P10, P11 and P12 was performed in diagnostic setting. The authors received and archived written consent of the legal guardians to publish genetic and clinical data (P1 - P13) as well as photographs, CT scan and MRI images (P1, P4 and P6).

### **Cohort**

All 13 individuals described herein (P1 - P13) were recruited through GeneMatcher<sup>13</sup> or personal communication, from different institutions in Germany, Israel, United States, Saudi Arabia and the United Arab Emirates. Genotypic data from P3 and P13 were previously reported without a detailed clinical description (P3: reported in <sup>14</sup>; P13: reported as 09DG00835<sup>15</sup>).

### **Clinical Spectrum**

Molecular and clinical data were collected from the referring clinicians using a questionnaire. All affected individuals were evaluated by a pediatric neurologist and/or geneticist. Reports of brain MRI was available from 12 individuals. Clinical terms were standardized using Human Phenotype Ontology (HPO) terminology.<sup>12</sup> Clinical features were grouped in six categories (phenotypical abnormalities of body and face, intellectual and social development, neurological system, respiratory system, gastrointestinal system, and diagnostic procedures). Detailed case descriptions for all included individuals are provided in the File S1 and File S2 (sheet "clinical\_table").

## Genetic Analyses

Genomic DNA was extracted using standard methods from peripheral blood samples of probands/parents. For P1 conventional karyotyping was performed and all individuals, except P4, received a chromosomal microarray. *TECPR2* variants were identified by gene panel analysis (P13), trio exome (P1 to P6 and P10), quad exome (P7 and P8) or targeted Sanger sequencing (P9, P11, P12). All herein identified *TECPR2* variants have been submitted to ClinVar (File S3 sheet “TECPR2\_variants”).

## Review of Published Cases

A PubMed search identified five publications<sup>6-10</sup> describing 11 individuals from nine families diagnosed with *TECPR2*-associated disease (searched on 2020-09-10). Phenotypical features were extracted from published reports using the same questionnaire applied to novel cases.

## Variant Annotation and Scoring

Variants were standardized to the *TECPR2* reference transcript NM\_014844.4 (GRCh37/hg19) using Mutalyzer 2.0.32<sup>16</sup> and annotated as described previously<sup>17</sup> with up-to-date versions of all tools<sup>18-21</sup> and scores<sup>22-24</sup> (for details see File S1). All diagnostic *TECPR2* variants were subsequently re-classified following ACMG guidelines.<sup>11</sup>

## Estimation of Carrier Frequencies from Public Databases

We retrieved all *TECPR2* variants from gnomAD<sup>25</sup> and BRAVO (see Web Resources). These were annotated, scored, and filtered as described before to calculate carrier frequencies.<sup>26</sup>

## Analysis of Missense Variant Spectrum and Modelling of *TECPR2* Protein Structure

Distribution of *TECPR2* missense variants in the secondary protein structure was compared to missense variants reported as homozygous in public population databases and protein



regions constrained for missense variation were analyzed as described before.<sup>26</sup> For analysis of the tertiary structure, we used the GalaxyWEB pipeline<sup>27-29</sup> to divide *TECPR2* protein sequence into modeling units, predict their structure and refine the top model. Protein data bank (PDB) format structures (File S4) were then used for visualization with a pipeline using the Pymol software<sup>30</sup> and missense clustering analysis as described before.<sup>26</sup> For details, also see Supplementary notes.

### **RNA Expression Analysis for the c.2829del *TECPR2* variant in P1**

Messenger RNA from peripheral blood lymphocytes of P1 and both parents was used to generate cDNA. Monoallelic expression was analyzed with RT-PCR and Sanger sequencing (Figure 2) and *TECPR2* expression was analyzed using qPCR (see details in File S1).

## RESULTS

### ***TECPR2* Variant Spectrum**

Genetic analyses including conventional karyotyping, chromosomal microarray analysis and multi-gene panels (except for P13) were unremarkable in all novel cases. 14 distinct variants in *TECPR2*, including seven truncating and seven missense variants, were identified. Of these, three truncating and four missense variants have not been reported previously (Figure 1A).

### **Founder Variants**

The first reported founder variant<sup>6</sup> in the Jewish Bukharian population c.3416del, p.(Leu1139Argfs\*75) was identified in homozygous state in five individuals from the literature and in two cases in our cohort. Additionally, the variant was discovered in compound heterozygous state with the Jewish Ashkenazi founder variant in one previously reported individual. Two previously reported individuals and four cases in our cohort were homozygous for the founder variant in the Jewish Ashkenazi population, c.1319del, p.(Leu440Argfs\*19). This variant was also found in compound-heterozygous state with a missense variant<sup>7</sup> and another truncating variant (in our cohort). The two founder variants are located in exons 8 and 16 respectively. GnomAD minor allele frequency (MAF) was 37/275,698 for c.1319del, p.(Leu440Argfs\*19) and 2/247,472 for c.3416del, p.(Leu1139Argfs\*75). There were no entries for homozygous occurrence of these variants in the reference population.

### **Other Truncating Variants**

Among the cases derived from the literature, one individual carried compound heterozygous frameshift variants (c.774del, p.(Asp259Metfs\*44); c.1028\_1032del, p.(Lys343Argfs\*2)). Novel identified truncating variants were c.571C>T, p.(Gln191\*) (homozygous), c.2829del, p.(Asn944Thrfs\*7) (homozygous), and c.3830del, p.(Asn1277Thrfs\*43) (compound

heterozygous with Ashkenazi founder variant). The variants are located in exons 5, 6, 7, 12 and 18. MAF in the heterozygous state was between 0 and 2/251,490 (gnomAD).

### **Expression analysis of the Stop Codon Containing Transcript in P1**

Sanger sequencing of cDNA showed comparable detection of the normal allele and the allele with the c.2829del variant in both carrier parents of individual P1 (Figure 2A). Additionally, RT-PCR indicated normal expression in individual P1 who is homozygous for the c.2829del variant (Figure 2B). Comparable expression of *TECPR2* in individual P1, his parents and in-house controls was confirmed by qPCR (Figure S3).

### **Missense Variants**

To date, only three missense variants have been reported (c.566C>T, p.(Thr189Ile); c.2050C>G, p.(Leu684Val); c.2708C>T, p.(Thr903Met)). Novel variants identified include two homozygous missense variants c.2998G>T, p.(Asp1000Tyr) and c.3418T>G, p.(Trp1140Gly) as well as two compound heterozygous missense variants c.715G>A, p.(Gly239Arg) and c.4033G>C, p.(Ala1345Pro). All variants are predicted to be deleterious by multiple *in silico* prediction programs except for the previously described variant c.2050C>G, p.(Leu684Val) (CADD PHRED v1.6: 5.5; mean for all reported missense: 24.4). For a complete overview of *in silico* analyses please refer to File S3. Similar results were obtained for the MAF, which is between 0 and 21/282,852, again except for c.2050C>G, p.(Leu684Val) which showed a MAF of 11,974/282,150. In addition, this variant is found homozygous in gnomAD (440x).

Analysis of spatial distribution in the linear protein structure indicated that missense variants identified in bi-allelic state in individuals with *TECPR2*-associated disease are predominantly located in the N-terminal (amino acid (AA) 1 to 357) and C-terminal (AA 802 to 1,411) protein regions. These two regions display a higher restraint for missense variation as indicated by higher computational scores and depletion of homozygous missense variants (Figure 1A; Figure S1).

This finding is further supported by the missense variant described in Spanish water dogs<sup>31</sup>, which is highly conserved (CADD PHRED score v1.6: 27.2) and located near to the c.4033G>C, p.(Ala1345Pro) variant (P3) in the C-terminal region (see Supplementary notes and Figure S1).

Our spatial proximity analysis using predicted 3D protein structures failed to identify clusters of missense variants (Table S3), but showed that all affect highly conserved residues in the repeats forming the N-terminal 7-bladed WD40  $\beta$ -propeller or the two predicted C-terminal  $\beta$ -propeller structures (Figure 1B and 1C; Figure S2). While we choose the GalaxyTBM<sup>28</sup> model for visualization of the spatial missense distribution in Figure S1, the structural similarity of the model predicted *de novo* by the trRosetta algorithm<sup>32</sup> is remarkable (Figure S2, Table S2). This convergence of structure prediction algorithms add confidence to the derived models and will thus accelerate our understanding of missense variants in genetic disorders lacking experimentally derived protein structures.

### **Carrier Frequency for (Likely) Pathogenic *TECPR2* Variants**

Our results indicate that at least 1 in 1,221 individuals (0.082%) in gnomAD and 1 in 1,610 individuals (0.062%) in BRAVO is a carrier. In gnomAD we were able to estimate the carrier frequency for eight subpopulations, which ranged from 1 in 155 (0.650%; Jewish Ashkenazi) to 1 in 7,654 (0.013%; South Asian). Using these frequencies, the expected incidence is at least 1 in 5,961,640 newborns (based on gnomAD) to 1 in 10,366,419 newborns (based on BRAVO). Of the analyzed populations (which did not include the Jewish Bukharian population) the highest incidence is expected in the Jewish Ashkenazi population with 1 in 95,864 newborns.

### **Predicted Tertiary *TECPR2* Protein Structure**

The three different protein modelling algorithms that we have used, indicated similar results for the overall *TECPR2* tertiary structure. The N-terminal domain (AA 1 to 357) containing seven WD-repeats is predicted to form a 7-bladed  $\beta$ -propeller fold (WD40 domain) with high

similarity in all models generated. The central region (AA 358 to 801) could either not be modelled completely due to lack of template structures or resulted in unstructured and highly diverging models. The C-terminal domain (AA 802 to 1,411), containing the six TECPR-repeats annotated from UniProt, was predicted to form a double  $\beta$ -propeller motif in most models with good structural similarity and five to seven blades per propeller. Overall, this indicates a structured C-terminal WD40-domain and TECPR-repeat containing structured double  $\beta$ -propeller motif in the C-terminus, linked by a 444 AA long unstructured peptide (Figure 1 B and C; Figure S2).

### **Clinical Spectrum**

In our cohort of newly diagnosed cases, 10 of 13 individuals were male. Age at last follow up was between 16 months and 15 years with an average of 66.3 months. Consanguinity was reported in four out of the 11 families. Five families were of Jewish Ashkenazi descent, two families were of Jewish Bukharian. Except P1, all individuals were born at term without significant pre- or perinatal complications. Three individuals were small for gestational age. Head circumference at birth was generally within normal limits. At last follow up only four individuals displayed short stature with a height below -2 SD (standard deviation) from age-matched controls, however, all 11 individuals with data available were below average height. Brachycephaly and microcephaly were observed in five individuals (three presented both). Distinct facial features were seen in nine individuals though were not uniform. Shared characteristics included a short neck, synophrys and a triangular-shaped face. Skeletal abnormalities including significant lumbar kyphosis, a barrel-shaped chest or hyperextension of the neck were present in five cases.

The average age at diagnosis in our cohort ranged between 13 months and 15 years with an average of 47.5 months. 12 affected individuals showed global developmental delay and later intellectual disability (DD/ID) in the mild (n=1), moderate (n=5) and severe range (n=6). P2 had only mildly delayed gross motor skills at last investigation; she is also the youngest individual in the cohort and developmental delay/intellectual disability may not be assessed

accordingly due to her age. Four individuals with severe development delay were reported to show behavioral dysregulation with hyperactivity, restlessness, and overfriendliness. Two received a formal diagnosis of autism spectrum disorder. Eight children (age range: 16 months to 8 years) had not started walking at the time of last follow up and five individuals walked independently (average age: 45 months). P3 was diagnosed with dystonic/dyskinetic cerebral palsy and started walking around the age of 10 years. Speech development was delayed in all children and speech remained limited to a few words with two individuals remaining completely non-verbal.

Most common neurological manifestations in our cohort included axial and appendicular hypotonia (13/13) accompanied by gait ataxia (9/9), hyporeflexia of the lower limbs (10/13) and dysarthria (5/6). Autonomic dysfunction, e.g. temperature instability (2/9), and hyperhidrosis (1/10) were noticed in a subset of cases (4/11). Four individuals were reported to have impaired pain sensation (4/12). Febrile seizures were found in P1 as well as P10; P13 was reported with drug-resistant epilepsy and a peripheral neuropathy was diagnosed in P6. Hearing impairment (3/13) and visual impairment (5/12) were present in a subset. The confluence of central respiratory dysregulation, oropharyngeal dysphagia, and neuromuscular-derived respiratory insufficiency with resultant central nocturnal (8/12) and/or daytime (5/13) hypoventilation, dysphagia (6/13), impaired secretion clearance resulted in recurrent respiratory infections (10/11), aspiration events (7/11), gastroesophageal reflux disease in infancy (8/13), implementation of non-invasive positive pressure ventilation (i.e. nocturnal BiPAP) (2/9), and utilization of gastrostomy tubes (3/10). Airway malformation such as laryngeal cleft or laryngomalacia were identified in a subset (4/13). Five individuals (5/13) were reported to have chronic and significant constipation.

Clinical manifestations of previously reported individuals are summarized in File S2. One case<sup>9</sup> was excluded from further analysis since the variant c.2050C>G, p.(Leu684Val) was classified as likely benign according to ACMG criteria. In summary, manifestations shared by the majority of all 23 individuals include: Global development delay and intellectual disability (22/22, 100%), muscular hypotonia (23/23, 100%), hyporeflexia of the lower limbs (19/23,

83%) and gait ataxia (17/17, 100%). Peripheral neuropathy, dysarthria and abnormal facial features were found in 9/10 (90%), 11/12 (92%) and 17/22 (77%) of individuals with sufficient data available. Recurrent respiratory infections (19/21, 90%), gastroesophageal reflux at infancy (17/23, 74%) and nocturnal hypoventilation (12/16, 75%) affected most individuals.

### **Brain Imaging and EEG**

Review of 12 brain MRI studies from our cohort (Figure 3 and Figure S4) and a review of reported cases in the literature defined a thin corpus callosum as a common feature (10/17, 59%). Additional findings in a subset of individuals included mild ventriculomegaly (often asymmetric colpocephaly), delayed myelination and diffuse cerebral atrophy. EEG was abnormal in three cases (3/11, 27%), but no specific pattern was reported.

## DISCUSSION

We here report a series of 13 individuals with bi-allelic *TECPR2* variants from mostly non-consanguineous families, and combine the detailed clinical, imaging, and molecular characterization of these individuals with the 11 cases previously reported. Since the variant c.2050C>G, p.(Leu684Val) was classified as likely benign according to ACMG criteria, one previously reported case<sup>9</sup> was excluded. The analysis of the remaining 23 individuals defines a core set of clinical and molecular features. These consist of global developmental delay and intellectual disability, axial and appendicular hypotonia, dysarthria and an abnormal gait, often described as an ataxic gait. Peripheral neuropathy was found in nearly all individuals in whom a detailed neurological assessment was available. Along with this, hyporeflexia was common and signs of autonomic dysfunction were prominent in the majority of cases. The latter included central hypoventilation, impaired temperature, and blood pressure regulation, repeat aspiration events and evidence of abnormal gastrointestinal motility. Whereas spasticity was recognized as a hallmark feature in the individuals initially reported<sup>6</sup>, the overall prevalence of spasticity was limited to a subset in our analysis (29%). We recognize that this is a potentially age-dependent manifestation, since increased tone was mainly reported in older individuals (P3 at age 15 years; Family B II-2 at age 20 years). P3 stands out because of the presence of dystonia, which was not present in previously published cases and possibly broadens the spectrum of neurological symptoms. Of note, epilepsy was nearly absent in our cohort, except in two individuals who experienced febrile seizures and two previously reported siblings with infrequent generalized tonic-clonic seizures. P13 stands out with therapy-resistant seizures, but due to consanguinity, other genetic conditions cannot be excluded. Future studies will be necessary to reassess epilepsy as associated feature. Overall, the wide neurological manifestations in individuals with *TECPR2*-associated disease along the age spectrum, point to an involvement of multiple areas of the central nervous system (i.e. cortico-spinal tracts, cerebral cortex, brain stem, possibly basal ganglia) as well as the peripheral nervous system.



A large part of the morbidity and mortality associated with *TECPR2* results from central hypoventilation requiring therapy with non-invasive positive pressure ventilation and occasionally active mechanical ventilatory support. Our findings are supported by a recently published, detailed analysis of the distinct breathing pattern from one affected individual.<sup>10</sup>

Based on our clinical experience and the reported disease manifestations, we suggest a framework for routine surveillance as detailed in Table 2. Symptomatic treatment should be tailored to each individual case and aims at preserving function and preventing long-term morbidity and mortality. Early developmental support should be maximized to harness the developmental potential.

Overall, our cross-sectional analysis suggests that there is evidence of disease progression from a predominantly neurodevelopmental disorder with global developmental delay and hypotonia in early childhood to a progressive disease with corticospinal and corticobulbar dysfunction later on. We know from personal communications about the disease course of previously reported patients<sup>6,7</sup>, who all lost the ability to walk.

Due to largely non-specific initial clinical features, individuals with *TECPR2*-associated disease may initially receive a diagnosis of cerebral palsy. In addition to an often-unremarkable perinatal history, clinical features that help distinguish *TECPR2*-disease from cerebral palsy include the findings of central apnea/hypoventilation, autonomic instability, hyporeflexia as well as other signs of peripheral neuropathy. Brain MRI in *TECPR2*-associated disease shows a thinning of the posterior parts of the corpus callosum in about 2/3 of individuals. This finding can help guide diagnostic testing.

A diagnosis is achieved through molecular testing. With the identification of novel truncating and missense variants we confirm and broaden the spectrum of disease-associated variants in *TECPR2*-associated hereditary sensory and autonomic neuropathy with intellectual disability. All individuals in the cohort with distinct ethnic origin carried the respective founder variant. This observation affirms the expected genotypic trait in the Jewish Ashkenazi and Jewish Bukharian population. However, the identification of other truncating variants provides evidence for the occurrence of *TECPR2*-associated disease in other ethnic groups. For all

families with homozygous variants other than the founder variants, consanguinity of the parents was reported. This is exemplified for P1 where the run-of-homozygosity on chromosome 14 was not described in the CMA report, because it was below the 10 Mb filtering cutoff (Figure 2C). Similar results were reported for P2 (File S1).

Our analysis did not show clustering or specific distribution pattern of the truncating variants. RNA analysis of the novel frameshift variant c.2829del, p.(Asn944Thrfs\*7), identified in P1, indicated escape from nonsense-mediated decay. This argues against NMD and is in line with previous results in cell-lines showing no effect on mRNA levels for the Jewish Bukharian variant c.3416del, p.(Leu1139Argfs\*75)<sup>6</sup>, but instead the resulting truncated protein being targeted for proteasome mediated degradation after translation.

In contrast, all disease-associated missense variants in this cohort affect conserved residues in repeats forming the blades of  $\beta$ -propeller structures at the C-terminal and the N-terminal ends of the protein (Figure 1). As we could not identify clustering in the tertiary structure, misfolding and subsequent degradation could cause loss of the protein carrying these missense substitutions. All four individuals from our cohort harboring missense variants showed moderate to severe DD/ID and are as severely affected as individuals with truncating variants. Therefore, our data do not indicate milder clinical manifestations in carriers of missense variants. This clinical observation further supports a similar pathomechanism, e.g. degradation of truncated or misfolded proteins, for both truncating and missense variants. However, due to the currently limited knowledge about *TECPR2* function and lack of well-established and readily available functional tests, in most cases missense variants cannot be classified as (likely) pathogenic according to ACMG guidelines. Based on our computational analyses, we propose to consider the following criteria for the interpretation of *TECPR2* missense variants: 1) variant position in the functional domains identified through our conservation and modelling analyses (PM1; Figure 1A; Figure S1 and S2), 2) deleterious effect predicted by *in silico* CADD score with cutoff >20 (PP3; Figure 1A), 3) the patient's phenotype matches the core features as well as *TECPR2*-specific symptoms of the HSAN-

spectrum (Table 1) and exome wide analyses does not reveal other clinically relevant findings (PP4).

Our estimation of carrier frequency is based on automated ACMG classification of variants and therefore includes only potentially truncating variants. Given that seven of the 14 unique variants are missense variants and considering the large number of uncharacterized *TECPR2* missense variants (729 in gnomAD and 448 in BRAVO), we anticipate that the true carrier frequency for (likely) pathogenic *TECPR2*-variant might be double our current estimate of 0.082% in the general population. Notably, the estimated carrier frequency is 7.9x higher (0.650%) in individuals with Jewish Ashkenazi background and at least 16.2x higher (1.33%) with Jewish Bukharian background.<sup>6</sup> A review of carrier screening tests for individuals of Jewish descent showed that *TECPR2* is currently included in four offered tests (see Table S1). Overall, based on these high carrier frequencies, both founder variants should be included in commercial carrier screening tests to inform genetic counseling and diagnostics in Jewish couples at increased risk for children with *TECPR2*-associated disease.

*TECPR2* encodes a protein that is implicated in the early steps of the autophagy pathway where it interacts with the Atg8 family proteins, including LC3, to promote autophagic vesicle formation.<sup>33</sup> Fibroblasts from affected individuals showed a decreased number of autophagosomes and reduced delivery of LC3 and p62 for lysosomal degradation; this suggests an impairment of autophagic flux.<sup>6</sup> Providing insights into the mechanism of defective autophagy, a subsequent study showed that *TECPR2* is involved in maintaining functional endoplasmic reticulum exit sites, which are implicated in the cargo from endoplasmic reticulum to Golgi and may serve as scaffolds for the formation of autophagosomes.<sup>1</sup>

While the precise role of autophagy in *TECPR2*-associated disease remains to be established, there are several clinical features that are shared with other single gene disorders of this pathway.<sup>3,4</sup> This includes the involvement of multiple brain areas, clinical signs that point to a progressive involvement of the long CNS tracts, such as the cortico-

spinal tracts, as well as the imaging finding of a thinning of the corpus callosum. *TECPR2*-associated disease, however, stands out for its prominent involvement of brain stem function, autonomic dysregulation, and peripheral neuropathy.

In summary, our cross-sectional analysis provides a depiction of clinical and molecular features across the age spectrum. Future prospective longitudinal studies are needed to better define the natural history and patterns of disease progression. Our present study provides a framework for assessing disease manifestations. Close follow up and surveillance for neurological and non-neurological manifestations is recommended.

## **ACKNOWLEDGEMENTS**

We thank all involved families for participating in this study. We also thank the Exome Aggregation Consortium and therein involved groups for provided exome and genome variant data for comparison. B.B. is supported by scholarships from the German National Academic Foundation and the Carl Duisberg Program by the Bayer Foundation. B.P. is supported by the Deutsche Forschungsgemeinschaft (DFG) through grant PO2366/2–1. D.E-F. is supported by grants from the CureAP4 Foundation, CureSPG50 Foundation, Spastic Paraplegia Foundation, the Thrasher Research Fund, and a joint research agreement with Astellas Pharmaceutical Inc. and MitoBridge Inc..

## **ABBREVIATIONS**

AA: amino acid

ACMG: American College of Medical Genetics and Genomics

CNS: central nervous system

DNA: deoxyribonucleic acid

EEG: electroencephalogram

HSP: hereditary spastic paraplegia

Mb: mega base

MRI: magnetic resonance imaging

NDD: neurodevelopmental disorder

NMD: nonsense-mediated mRNA decay

qPCR: quantitative polymerase chain reaction

RNA: ribonucleic acid

ROH: runs of homozygosity

SD: standard deviation

## **AUTHORS' CONTRIBUTIONS**

B.P., R.A.J. and S.N. conceived the initial study concept and coordinated collection of clinical and genetic data through matchmaking and personal communications. S.N., B.Br. and G.H. reviewed literature data and standardized the clinical HPO terms. A.Se., I.B., L.O., D.S., D.A.S., B.By., W-H.T., B.D., S.Sr., P.J., R.J.G., M.Z., Y.D., V.M., J.W., G.E., A.A.T., O.I., A.E.A.N., K.M., F.S.A., H.M.D., M.O.H., B.E.B., Y.H., A.Sz., B.B.-Z. and G.H. provided clinical and genetic data and performed clinical assessments. S.N., I.B., L.O., S.Sr., W.-H.T., G.E., F.S.A., A.E.A.N., H.M.D., M.Z., B.B.-Z. and G.H. wrote the case reports. I.B. provided RNA samples of P1 and his parents. S.Sc. conducted RT-PCR and qPCR analyses. C.B. performed protein analysis. J.M. supported computational protein modelling. M.K. processed samples of P1 and his parents for establishing a cell line. S.N. and B.P. created Figures 1, 2 and 3 and the Supplementary materials. S.N., B.B., G.H., B.B-Z., D.E-F. and B.P. wrote and edited the manuscript. All authors reviewed and commented the final draft manuscript.

## **AVAILABILITY OF DATA AND MATERIALS**

All data generated or analyzed during this study can be found in the online version of this article at the publisher's website.

## **SUPPLEMENTARY FILES**

File S1: clinical reports, supplementary methods, results, figures and tables, references

File S2: comprehensive clinical data

File S3: comprehensive genetic data

File S4: TECPR2 protein models predicted by three algorithms

## **WEB RESOURCES**

gnomAD browser: <http://gnomad.broadinstitute.org/>

BRAVO/TOPmed: <https://bravo.sph.umich.edu>

Mutalyzer: <https://mutalyzer.nl>

ClinVar: <https://www.ncbi.nlm.nih.gov/clinvar/>

UCSC BLAT: <https://genome.ucsc.edu/cgi-bin/hgBlat>

UCSC Browser: <https://genome.ucsc.edu/cgi-bin/hgGateway>

SPIDEX/SPANR: <http://tools.genes.toronto.edu>

dbscSNV: <http://www.liulab.science/dbscsnv.html>



## REFERENCES

1. Stadel D, Millarte V, Tillmann KD, et al. TECPR2 Cooperates with LC3C to Regulate COPII-Dependent ER Export. *Molecular Cell*. 2015;60(1):89-104. doi:10.1016/j.molcel.2015.09.010.
2. Oz-Levi D, Gelman A, Elazar Z, Lancet D. TECPR2: A new autophagy link for neurodegeneration. *Autophagy*. 2013;9(5):801-802. doi:10.4161/auto.23961.
3. Ebrahimi-Fakhari D, Saffari A, Wahlster L, et al. Congenital disorders of autophagy: an emerging novel class of inborn errors of neuro-metabolism. *Brain*. 2016;139(2):317-337. doi:10.1093/brain/awv371.
4. Teinert J, Behne R, Wimmer M, Ebrahimi-Fakhari D. Novel insights into the clinical and molecular spectrum of congenital disorders of autophagy. *J Inherit Metab Dis*. 2019;n/a(n/a):1-12. doi:10.1002/jimd.12084.
5. Menzies FM, Fleming A, Caricasole A, et al. Autophagy and Neurodegeneration: Pathogenic Mechanisms and Therapeutic Opportunities. *Neuron*. 2017;93(5):1015-1034. doi:10.1016/j.neuron.2017.01.022.
6. Oz-Levi D, Ben-Zeev B, Ruzzo EK, et al. Mutation in TECPR2 reveals a role for autophagy in hereditary spastic paraparesis. *American Journal of Human Genetics*. 2012;91(6):1065-1072. doi:10.1016/j.ajhg.2012.09.015.
7. Heimer G, Oz-Levi D, Eyal E, et al. TECPR2 mutations cause a new subtype of familial dysautonomia like hereditary sensory autonomic neuropathy with intellectual disability. *European Journal of Paediatric Neurology*. 2016;20(1):69-79. doi:10.1016/j.ejpn.2015.10.003.
8. Zhu X, Petrovski S, Xie P, et al. Whole-exome sequencing in undiagnosed genetic diseases: interpreting 119 trios. *Genetics in Medicine*. 2015;17(10):774-781. doi:10.1038/gim.2014.191.
9. Covone AE, Fiorillo C, Acquaviva M, et al. WES in a family trio suggests involvement of TECPR2 in a complex form of progressive motor neuron disease: WES in a family trio suggests involvement of TECPR2. *Clinical Genetics*. 2016;90(2):182-185. doi:10.1111/cge.12730.
10. Patwari PP, Wolfe LF, Sharma GD, Berry-Kravis E. TECPR2 Mutation Associated Respiratory Dysregulation: More than Central Apnea. *J Clin Sleep Med*. 2020. doi:10.5664/jcsm.8434.
11. Richards S, Aziz N, Bale S, et al. Standards and guidelines for the interpretation of sequence variants: a joint consensus recommendation of the American College of Medical Genetics and Genomics and the Association for Molecular Pathology. *Genet Med*. 2015;17(5):405-424. doi:10.1038/gim.2015.30.

12. Köhler S, Carmody L, Vasilevsky N, et al. Expansion of the Human Phenotype Ontology (HPO) knowledge base and resources. *Nucleic Acids Res.* 2019;47(D1):D1018-D1027. doi:10.1093/nar/gky1105.
13. Sobreira N, Schietecatte F, Valle D, Hamosh A. GeneMatcher: a matching tool for connecting investigators with an interest in the same gene. *Human Mutation.* 2015;36(10):928-930. doi:10.1002/humu.22844.
14. Zech M, Jech R, Boesch S, ŠkorvÁnek M, Weber S, Wagner M. Monogenic variants in dystonia: an exome-wide sequencing study. *Lancet Neurology*;2020:in press.
15. Shams Anazi, Sateesh Maddirevula, Vincenzo Salpietro, et al. Expanding the genetic heterogeneity of intellectual disability. *Hum Genet.* 2017;136(11):1419-1429. doi:10.1007/s00439-017-1843-2.
16. Wildeman M, van Ophuizen E, den Dunnen JT, Taschner PEM. Improving sequence variant descriptions in mutation databases and literature using the Mutalyzer sequence variation nomenclature checker. *Human Mutation.* 2008;29(1):6-13. doi:10.1002/humu.20654.
17. Popp B, Ekici AB, Thiel CT, et al. Exome Pool-Seq in neurodevelopmental disorders. *Eur J Hum Genet.* 2017;25(12):1364-1376. doi:10.1038/s41431-017-0022-1.
18. Freeman PJ, Hart RK, Gretton LJ, Brookes AJ, Dalglish R. VariantValidator: Accurate validation, mapping, and formatting of sequence variation descriptions. *Human Mutation.* 2018;39(1):61-68. doi:10.1002/humu.23348.
19. Liu X, Jian X, Boerwinkle E. dbNSFP v2.0: a database of human non-synonymous SNVs and their functional predictions and annotations. *Human Mutation.* 2013;34(9):E2393-402. doi:10.1002/humu.22376.
20. Cingolani P, Patel VM, Coon M, et al. Using *Drosophila melanogaster* as a Model for Genotoxic Chemical Mutational Studies with a New Program, SnpSift. *Front Genet.* 2012;3:35. doi:10.3389/fgene.2012.00035.
21. Cingolani P, Platts A, Le Wang L, et al. A program for annotating and predicting the effects of single nucleotide polymorphisms, SnpEff: SNPs in the genome of *Drosophila melanogaster* strain w1118; iso-2; iso-3. *Fly (Austin).* 2012;6(2):80-92. doi:10.4161/fly.19695.
22. Rentzsch P, Witten D, Cooper GM, Shendure J, Kircher M. CADD: predicting the deleteriousness of variants throughout the human genome. *Nucleic Acids Res.* 2019;47(D1):D886-D894. doi:10.1093/nar/gky1016.
23. Xiong HY, Alipanahi B, Lee LJ, et al. RNA splicing. The human splicing code reveals new insights into the genetic determinants of disease. *Science.* 2015;347(6218):1254806. doi:10.1126/science.1254806.

24. Jian X, Boerwinkle E, Liu X. In silico prediction of splice-altering single nucleotide variants in the human genome. *Nucleic Acids Res.* 2014;42(22):13534-13544. doi:10.1093/nar/gku1206.
25. Karczewski KJ, Francioli LC, Tiao G, et al. The mutational constraint spectrum quantified from variation in 141,456 humans. *Nature.* 2020;581(7809):434-443. doi:10.1038/s41586-020-2308-7.
26. Hebebrand M, Hüffmeier U, Trollmann R, et al. The mutational and phenotypic spectrum of TUBA1A-associated tubulinopathy. *Orphanet Journal of Rare Diseases.* 2019;14(1):38. doi:10.1186/s13023-019-1020-x.
27. Ko J, Park H, Heo L, Seok C. GalaxyWEB server for protein structure prediction and refinement. *Nucleic Acids Res.* 2012;40(Web Server issue):W294-7. doi:10.1093/nar/gks493.
28. Ko J, Park H, Seok C. GalaxyTBM: template-based modeling by building a reliable core and refining unreliable local regions. *BMC Bioinformatics.* 2012;13:198. doi:10.1186/1471-2105-13-198.
29. Heo L, Park H, Seok C. GalaxyRefine: Protein structure refinement driven by side-chain repacking. *Nucleic Acids Res.* 2013;41(Web Server issue):W384-8. doi:10.1093/nar/gkt458.
30. Meyer MJ, Lapcevic R, Romero AE, et al. mutation3D: Cancer Gene Prediction Through Atomic Clustering of Coding Variants in the Structural Proteome. *Human Mutation.* 2016;37(5):447-456. doi:10.1002/humu.22963.
31. Hahn K, Rohdin C, Jagannathan V, et al. TECPR2 Associated Neuroaxonal Dystrophy in Spanish Water Dogs. *PLOS ONE.* 2015;10(11):e0141824. doi:10.1371/journal.pone.0141824.
32. Yang J, Anishchenko I, Park H, Peng Z, Ovchinnikov S, Baker D. Improved protein structure prediction using predicted interresidue orientations. *Proc Natl Acad Sci U S A.* 2020;117(3):1496-1503. doi:10.1073/pnas.1914677117.
33. Behrends C, Sowa ME, Gygi SP, Harper JW. Network organization of the human autophagy system. *Nature.* 2010;466(7302):68-76. doi:10.1038/nature09204.

## TABLES AND FIGURES

### Figure 1 | *TECPR2* Structure with Variant Distribution and Computational Scores.

(A) Schematic of the *TECPR2* protein with WD40 and TECPR repeat units (WD40: green, TECPR: orange; based on Uniprot O15040) and three modeling units (“N-terminal”: grey, “central”: white, “C-terminal”: purple) identified by GalaxyDom. Disease-associated variants identified in the cohort are depicted towards the top. The length of the segments corresponds to each variant’s CADD score. Blue dots represent novel identified variants, black dots represent variants reported in the literature and green dots represent the founder variants. Grey dots downwards show homozygous variants from gnomAD, the dot size represents the logarithm of the allele count. In the panel below, a generalized additive model shows the values of CADD PHRED v1.6 for all possible missense variants in *TECPR2* across the protein secondary structure. The red horizontal line marks the recommended cut-off (20). (B) Homology model of the N-terminal domain (AA 1 to 357; grey) generated through the GalaxyTBM pipeline showing the 7-bladed  $\beta$ -propeller fold typical for WD40 repeat. Position of missense variants identified in the individual P3 (Gly239) from our study and “Family E II-1” (Thr189) from the literature review are presented as red spheres. Both missense variants affect conserved residues in  $\beta$ -propeller folds. (C) Lateral overview of the homology model of the C-terminal domain (AA 802 to 1411; blue) showing the two  $\beta$ -propeller folds in the TECPR repeat unit. Position of missense variants identified in the individuals P7 and P8 (Asp1000), P6 (Trp1140) and P3 (Ala1345) from our study and “Family H I-1” (Thr903) from the literature review and (Arg1379) from the Spanish water dogs (Supplementary notes and Figure S1) are presented as red spheres.

### Figure 2 | Exemplary Sanger Sequences, RT-PCR and CMA Results for P1.

(A) Chromatograms of DNA (Sanger sequencing) and RNA (RT-PCR on PAXgene stabilized blood) of P1 (down left) and his parents (up left and right). (B) Gel electrophoresis of cDNA-amplicon. (C) Chromosomal microarray data for individual P1 showing an unremarkable copy

number of chromosome 14 (Log2Ratio top) and SNP allele peak distribution (AllelePeaks bottom) showing a 6.52 Mb run-of-homozygosity (blue) containing *TECPR2* (red).

**Figure 3 | MRI and Facial Features of Individuals with *TECPR2*-associated Disease.**

(A) T1 axial and sagittal images of P1 at the age of four years show delayed CNS myelination, mild ventriculomegaly and periventricular gliosis. T1 axial and sagittal images of P4 at the age of one year show mild thinning of the posterior corpus callosum and/or mildly hypoplastic corpus callosum with mild lateral ventriculomegaly. (B) Facial images of P1 at the age of 5 years and four months. Facial images of P4 at the age of four years (front) and seven years (side).

Group	Phenotype	HPO	Novel cases (%)		Literature cases (%)		All cases (%)	
Phenotypical abnormalities of body and face	Abnormal facial shape	HP:0001999	69	(9/13)	89	(8/9)	<b>77</b>	(17/22)
	Short stature	HP:0004322	33	(4/12)	78	(7/9)	52	(11/21)
	Abnormality of skeletal morphology	HP:0011842	38	(5/13)	100	(2/2)	47	(7/15)
	Microcephaly	HP:0000252	36	(4/11)	75	(6/8)	53	(10/19)
	Brachycephaly	HP:0000248	23	(3/13)	56	(5/9)	36	(8/22)
Intellectual and social development	Behavioral abnormalities	HP:0000708	33	(4/12)	100	(4/4)	50	(8/16)
	Global developmental delay; Intellectual disability	HP:0001263; HP:0001249	100	(12/12)	100	(10/10)	<b>100</b>	(22/22)
	<i>moderate</i>	HP:0011343; HP:0002342	42	(5/12)	14	(1/7)	32	(6/19)
	<i>severe</i>	HP:0011344; HP:0010864	50	(6/12)	86	(6/7)	63	(12/19)
Neurological system	Muscular hypotonia	HP:0001252	100	(13/13)	100	(10/10)	<b>100</b>	(23/23)
	Hyporeflexia of lower limbs	HP:0002600	77	(10/13)	90	(9/10)	<b>83</b>	(19/23)
	Gait ataxia	HP:0002066	100	(9/9)	100	(8/8)	<b>100</b>	(17/17)
	Dysarthria	HP:0001260	83	(5/6)	100	(6/6)	<b>92</b>	(11/12)
	Peripheral neuropathy	HP:0009830	50	(1/2)	100	(8/8)	<b>90</b>	(9/10)
	Impaired pain sensation	HP:0007328	33	(4/12)	100	(4/4)	50	(8/16)
	Abnormality of the autonomic nervous system	HP:0002270	36	(4/11)	100	(10/10)	67	(14/21)
	Abnormal systemic blood pressure	HP:0030972	0	(0/10)	88	(7/8)	39	(7/18)
	Temperature instability	HP:0005968	20	(2/10)	67	(2/3)	31	(4/13)
	Visual impairment	HP:0000505	42	(5/12)	75	(3/4)	50	(8/16)
	Hearing impairment	HP:0000365	23	(3/13)	100	(2/2)	33	(5/15)
Respiratory system	Recurrent respiratory infections	HP:0002205	91	(10/11)	90	(9/10)	<b>90</b>	(19/21)
	Aspiration	HP:0002835	64	(7/11)	50	(4/8)	58	(11/19)
	Nocturnal hypoventilation	HP:0002877	67	(8/12)	100	(4/4)	<b>75</b>	(12/16)
	Central hypoventilation	HP:0007110	38	(5/13)	100	(9/9)	64	(14/22)
GI system	Gastroesophageal reflux at infancy	HP:0002020	62	(8/13)	90	(9/10)	<b>74</b>	(17/23)
	Vomiting	HP:0002013	31	(4/13)	33	(3/9)	32	(7/22)
	Dysphagia	HP:0002015	46	(6/13)	11	(1/9)	32	(7/22)

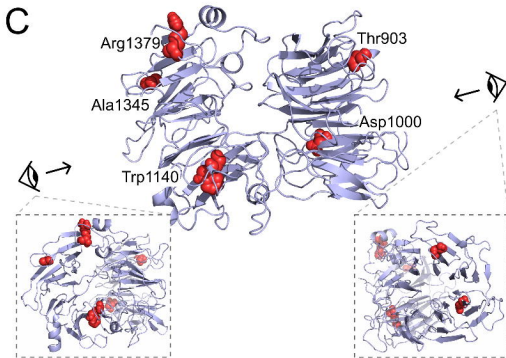
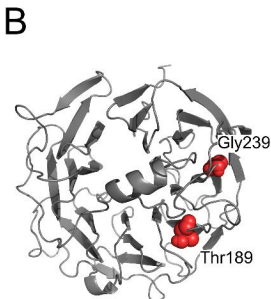
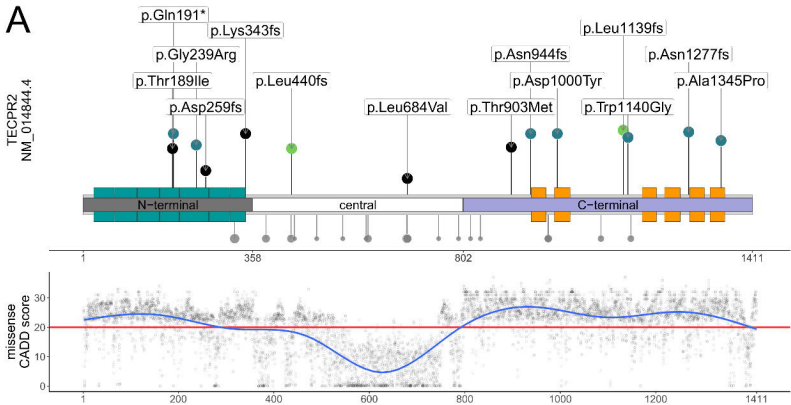
Group	Phenotype	HPO	Novel cases (%)		Literature cases (%)		All cases (%)	
diagnostic procedures	Abnormal corpus callosum morphology	HP:0001273	64	(7/11)	50	(3/6)	59	(10/17)
	Abnormality of metabolism/homeostasis	HP:0001939	67	(6/9)	25	(1/4)	54	(7/13)

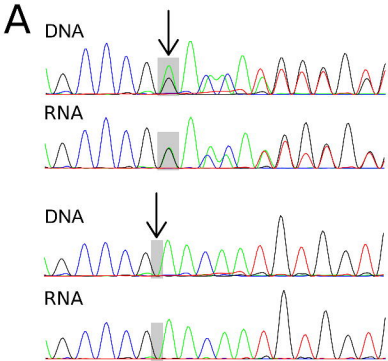
**Table 1 | Clinical Manifestations of *TECPR2*-associated Disease.**

<b>Recommendations for Surveillance and Symptomatic Treatment.</b>	
<p><b>Every 6 months</b></p> <ul style="list-style-type: none"> <li>• Neurological examination including a developmental assessment</li> <li>• Pulmonologist evaluation</li> <li>• Gastroenterological evaluation and consultation with a dietician</li> <li>• Consider Orthopedic evaluation</li> <li>• Consider venous blood gases</li> <li>• Consider BERA test (once in case of suspect for hearing impairment)</li> </ul>	<p><b>Every 12 months</b></p> <ul style="list-style-type: none"> <li>• Polysomnography study</li> <li>• Consider chest X-ray</li> <li>• Consider mucous culture</li> <li>• Consider spine X-ray</li> <li>• Consider swallowing study (unless fed by gastrostomy)</li> <li>• Consider echocardiography for signs of pulmonary hypertension</li> <li>• Consider blood pressure monitoring</li> <li>• Consider arterial blood gases</li> <li>• Fasting glucose, electrolytes and liver function tests (also during intercurrent illnesses)</li> <li>• Consider ENT evaluation if snoring or consistent tonsillar enlargement</li> </ul>
<b>Supportive Therapy - Recommendations</b>	
<ul style="list-style-type: none"> <li>• Routine treatments by physiotherapist, occupational therapist and speech therapist</li> <li>• Routine chest physiotherapy and mechanical insufflator-exsufflator device</li> <li>• Consider antacids, H2 blockers or PPI if GERD present</li> <li>• Consider gastrostomy tube and fundoplication if severe GERD/aspiration present</li> <li>• Consider adenoidectomy / tonsillectomy if obstructive sleep apnea present</li> <li>• Consider continuous nighttime pulse oximetry depending on sleep study results</li> <li>• Consider nighttime non-invasive ventilation depending on sleep study results</li> <li>• Use sedatives with caution given reports of prolonged effects in this patient population</li> </ul>	

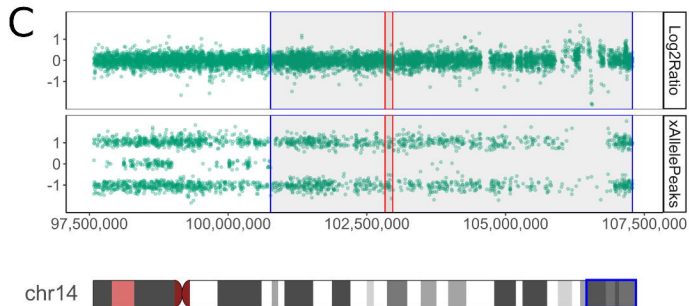
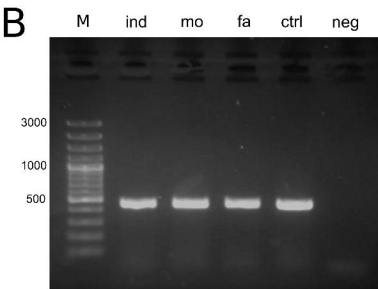
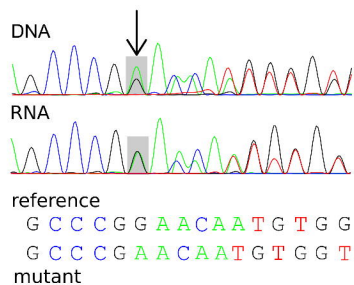
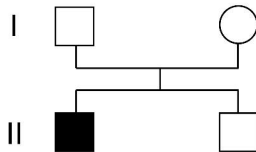
**Table 2 | Recommendations for Surveillance and Symptomatic Treatment.**





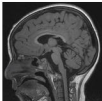


**TECPR2: NM\_014844.4**  
 c.2829del, p.(Asn944Thrfs\*7)

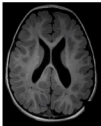
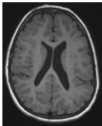
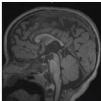


**A**

P1



P4

**B**

P1

This image  
has been removed  
to comply with  
medrxiv policy

P4

This image  
has been removed  
to comply with  
medrxiv policy

This image  
has been removed  
to comply with  
medrxiv policy

This image  
has been removed  
to comply with  
medrxiv policy