

1 **TITLE (120 CHARACTERS MAX):**

2 Investigating the relationship between IGF-I, -II and IGFBP-3 concentrations and later-life cognition
3 and brain volume

4 **SHORT TITLE (50 CHARACTERS MAX):** IIS, cognition and brain volume in the NSHD

5 **AUTHORS:**

6 Antoine Salzmänn¹, Sarah-Naomi James¹, Dylan M. Williams^{1,2}, Marcus Richards¹, Dorina Cadar³,
7 Jonathan M. Schott⁴, William Coath⁴, Carole H. Sudre^{4,5}, Nishi Chaturvedi¹ and Victoria Garfield¹

8 **INSTITUTIONS:**

9 ¹MRC Unit for Lifelong Health and Ageing at UCL, University College London, London, UK

10 ²Department of Medical Epidemiology and Biostatistics, Karolinska Institutet, Stockholm, Sweden.

11 ³Department of Behavioural Science and Health, University College London, London, UK

12 ⁴Department of Neurodegenerative Disease, The Dementia Research Centre, UCL Queen Square
13 Institute of Neurology, London, UK

14 ⁵School of Biomedical Engineering and Imaging Sciences, King's College London, London, UK

15 **CORRESPONDING AUTHOR:**

16 Antoine Salzmänn

17 MRC Unit for Lifelong Health and Ageing at UCL

18 University College London

19 5th floor | 1-19 Torrington Place | London | WC1E 7HB | London, United Kingdom

20 Phone: +44 (0) 2076705723

21 Email: antoine.salzmann.14@ucl.ac.uk

22

23 **FUNDING:** This work was supported by the UK Medical Research Council, which provides core
24 funding for the MRC Unit For Lifelong Health and Ageing at UCL and the MRC National Survey of
25 Health and Development (MC_UU_00019/1) and supports AS, NC, DW, MR, SNJ (MC_ST_LHA_2019;
26 MC_UU_0019/2, MC_UU_0019/3). Insight 46 is principally funded by grants from Alzheimer's
27 Research UK (and SNJ ARUK-PG2014-1946, ARUK-PG2017-1946), the Medical Research Council
28 Dementias Platform UK (CSUB19166), the Wolfson Foundation (PR/ylr/18575) and The Drake
29 Foundation. JMS acknowledges the EPSRC (EP/J020990/1) and European Union's Horizon 2020
30 research and innovation programme (Grant 666992) and a Weston Brain Institute and Selfridges
31 Group Foundation award (176724). DC is funded by the National Institute on Aging (RO1AG017644)
32 and ESRC (ES/S013830/1). CHS is supported by an Alzheimer's Society Junior Fellowship (AS-JF-17-
33 011). VG is funded by Joint Diabetes UK and British Heart Foundation (15/0005250).

34 **DISCLOSURE:** JMS has received research funding from Avid Radiopharmaceuticals (a wholly-owned
35 subsidiary of Eli Lilly), has consulted for Roche Pharmaceuticals, Biogen, and Eli Lilly, given
36 educational lectures sponsored by GE, Eli Lilly and Biogen, and serves on a Data Safety Monitoring
37 Committee for Axon Neuroscience SE. NC receives funds for serving on a Data Safety Monitoring
38 Committee for a study sponsored by AstraZeneca. All other authors have no conflicts of interest to
39 declare.

40 **KEYWORDS (6 max):** IGF-I, IGF-II, Cognition, Ageing, Epidemiology, Brain volume

41

42 Abstract (250 words max)

43 **Background:** The insulin/insulin-like signalling (IIS) pathways, including Insulin-like Growth Factors
44 (IGFs), varies with age. However, their association with late-life cognition and neuroimaging
45 parameters is not well characterised.

46 **Methods:** Using data from the British 1946 birth cohort we investigated associations of IGF-I, -II and
47 IGFBP-3 (measured at 53 and 60-64 years) with cognitive performance (word learning test (WLT)
48 and visual letter search (VLS) – at 60-64y and 69y) and cognitive state (Addenbrooke’s Cognitive
49 Exam-III (ACE-III) - at 69-71y), and in a proportion, quantified neuroimaging measures (whole brain
50 volume (WBV); white matter hyperintensity volume (WMHV); hippocampal volume (HV)).
51 Regression models included adjustments for demographic, lifestyle and health factors.

52 **Results:** Higher IGF-I and IGF-II at 53y was associated with higher ACE-III scores (β 0.07 95%CI
53 [0.02,0.12]; $\text{score}_{\text{ACE-III}}$ 89.48 [88.86,90.1], respectively). IGF-II at age 53y was additionally associated
54 with higher WLT scores ($\text{score}_{\text{WLT}}$ 20 [19.35,20.65]). IGFBP-3 at 60-64y was associated with
55 favourable VLS score at 60-64y and 69y (β 0.07 [0.01,0.12]; β 0.07 [0.02,0.12], respectively), higher
56 memory and cognitive state at 69y (β 0.07 [0.01,0.12]; β 0.07 [0.01,0.13], respectively) and reduced
57 WMHV (β -0.1, [-0.21,-0.00]). IGF-I/IGFBP-3 at 60-64y was associated with lower VLS scores at 69y (β
58 -0.08, [-0.15,-0.02]).

59 **Conclusions:** Increased measure in IIS parameters (IGF-I, -II and IGFBP-3) relate to better cognitive
60 state in later life. There were apparent associations with specific cognitive domains (IGF-II relating to
61 memory; IGFBP-3 to memory, processing speed and WMHV; and IGF-I/IGFBP-3 molar ratio with
62 slower processing speed). IGFs and IGFBP-3 are associated with favourable cognitive function
63 outcomes.

64 **Word count: 250 words**

65 Introduction

66 The Growth Hormone/Insulin-like Growth Factor signalling pathway is thought to play a key
67 role in ageing health and the determination of age-related diseases. In humans, this pathway is
68 regulated through the somatotrophic axis, which consists mainly of growth hormone (GH), Insulin-like
69 Growth Factors (IGF) and their respective binding proteins¹. IGF-I binds to IGF binding proteins
70 (IGFBP) in high-affinity complexes to prevent degradation and binding to the IGF-I receptor (IGF1R),
71 thus leaving concentrations of 'free' circulating IGF-I relatively low. As such, the ratio of IGF-I to
72 binding proteins provides an indication of bioavailability¹⁻³, whilst also mediating its effect via
73 IGF1R; IGF-II bioavailability is also regulated by the IGF2 receptor⁴. IGFBP-3, however, has also been
74 shown to have IGF-independent associations on phenotypes⁵.

75 Whereas research supports an important role of Insulin/Insulin Growth Factor-like Signalling
76 (IIS) in early brain development and neuroplasticity, as evidenced by developmental defects
77 associated with mutations in the IGF1R gene, its role in the maintenance of brain function is less well
78 understood^{6,7}. Observational studies are conflicting, with some reporting protective, detrimental,
79 'U' shape and null associations^{8,9}. The relationship between IGF-II and cognition and neurological
80 health, on the other hand, remains largely uncharacterised, with only one study to date, which
81 reported raised IGF-II concentrations in association with better cognition, while no association of
82 IGF-I was observed¹⁰

83 The MRC National Survey for Health and Development (NSHD; also known as the 1946
84 British Birth Cohort), provides an ideal opportunity to study the relationship between measures of
85 the IIS axis through mid-life, and cognition and brain volume in later life¹¹. IGF-I and -II collection at
86 multiple time points may help resolve previous discrepant findings by considering differential
87 associations of age, and duration of follow-up. Additionally the NSHD has a wealth of data across the
88 life-course, allowing us to control for potential confounders which have been omitted or based on

89 recalled data in past studies, such as early-life cognition and affective symptoms. Finally,
90 neuroimaging data enables associations with brain volume and neurovascular health to be studied in
91 tandem with cognitive function.

92 We aimed to examine the independent associations of IGF-I, IGFBP-3, and IGF-II measured at
93 ages 53 and 60-64 with cognitive function at ages 60-64 and 69, and volumetric and cerebrovascular
94 neuroimaging parameters (total brain, hippocampal and white matter hyperintensity volumes) at
95 age 69-71.

96

97

98

99 Methods

100 Study participants

101 The NSHD recruited 5,362 participants born within one week in March 1946 in England,
102 Scotland and Wales. The cohort has remained in continuous follow-up from birth to date, with 24
103 sweeps of investigation¹². Cognitive function at age 69 was our primary outcome. At this age, 2149
104 participants were interviewed. The loss to follow-up was due to death (19.1%), refusal (20.6%),
105 emigration or being temporarily abroad (10.8%) or because the participant could not be contacted
106 or traced (7.8%). Figure 1 outlines the number of participants with information concerning exposure
107 and outcome variables and the final sample (n=1762) used for analysis.

108 We additionally examined associations with neuroimaging outcomes in a sub-sample who
109 had participated in the neuroimaging sub-study, Insight 46¹³. Details have previously been published
110¹³, but in brief this study included 502 individuals who underwent positron emission tomography–
111 magnetic resonance imaging (PET-MRI) scanning using a single Biograph mMR 3T PET-MRI scanner
112 (Siemens Healthcare, Erlangen), with simultaneous acquisition of PET/MRI data, including volumetric
113 (1.1 mm isotropic) T1 and fluid-attenuated inversion recovery (FLAIR) sequences¹³. Volumetric T1-
114 weighted and FLAIR images underwent visual quality control prior to processing following an
115 automated pipeline¹³. Relevant imaging measures were isolated as follows: total brain volume (TBV)
116 using Multi-Atlas Propagation and Segmentation¹⁴, mean hippocampal volume (HV) using Similarity
117 and Truth Estimation for Propagated Segmentations¹⁵, total intracranial volume (TIV) using SPM12
118 (Wellcome Centre for Human Neuroimaging) and white matter hyperintensity volume (WMHV) using
119 Bayesian model selection (BaMoS)^{16,17}. WMHV was isolated from 3D T1 and FLAIR images followed
120 by visual inspection to generate a global WMHV, including subcortical grey matter but excluding
121 infratentorial regions^{17,18}. Eligibility criteria, the study protocol, and a comparison of those who did
122 and who did not participate in Insight 46 have been described in detail elsewhere^{13,18}. Of the 502
123 Insight 46 participants, complete neuroimaging and ACE-III data were available for 378.

124 Measures

125 IGF-I, IGF-II and IGFBP-3 concentrations

126

127 Blood samples were collected at age 53 (non-fasting), and age 60-64 (fasting). Samples were stored
128 at -80°C and assayed together. IGF-I, IGF-II and IGFBP-3 concentrations were obtained by
129 radioimmunoassay using standard protocols in the same laboratory, as previously described¹⁹. The
130 intra-assay coefficient of variation (CV) for IGF-I, IGF-II and IGFBP-3 were 3.4%, 2.8% and 3.9%,
131 respectively. The inter-assay CV was 13.7%, 7.4% and 11.7% for IGF-I, IGF-II and IGFBP-3, respectively
132²⁰. IGF-I, IGF-II and IGFBP-3 values were converted from ng/ml to standard SI units: nmol/L²¹. IGF-
133 I/IGFBP-3 values were calculated as molar ratios as an indicator of IGF-I bioavailability. Repeat
134 measures were available for between 1117 and 1127 participants, for IGF-I/IGFBP-3 ratio and IGFBP-
135 3, respectively.

136 Cognitive performance measures

137

138 Three separate tests were used to measure cognitive domains. At 60-64 and 69,
139 standardised versions of a Word Learning Test (WLT) and Visual Letter Search test (VLS) were used
140 to assess memory and processing speed, respectively. The WLT consists of a 15-word learning task
141 devised for the NSHD. Each word was shown to the participant for 2 seconds and participants were
142 asked to immediately write down as many words as they could remember. The task was repeated
143 three times, and the scores were summed (max = 45), which is representative of short-term episodic
144 memory^{22,23}. The VLS required participants to scan for the letters 'P' and 'W' among other letters
145 and cross out as many of them within one minute. Search speed score was based on how far the
146 participant got in the grid search, with a maximum score of 600 signifying they had completed the
147 whole grid²².

148 The Addenbrooke's Cognitive Examination-III (ACE-III) is a test for cognitive state

149 administered at age 69^{24,25}. The test assesses five domains, each with different score ranges:

150 Attention (0-18), Memory (0-26), Fluency (0-14), Language (0-26) and Visuospatial (0-16). The test
151 was administered either online using an iPad (<http://www.acemobile.org/>) or by paper if the former
152 was not possible. Paper tests were scored by trained personnel^{24,26}. Unlike most tests of cognitive
153 state, the ACE-III total score (max = 100) has a quasi-normal distribution, making it appropriate for
154 parametric statistical analyses.

155 Covariates

156

157 Covariates were selected *a priori*, based on previous studies and added into our models
158 successively. Model 1 had sex, Model 2 included additional adjustments for childhood cognition and
159 educational attainment, Model 3 added smoking status at the time of exposure and Model 4 added
160 affective symptoms at the time of outcome^{10,27,28}. The same models were used when investigating
161 the relationship between exposures and brain volume with TIV additionally controlled for in all
162 volumetric outcome models.

163 Childhood cognition at age 8 was assessed by four tests administered by trained observers:
164 reading comprehension, word pronunciation, vocabulary and non-verbal reasoning. Total scores
165 were standardised to the study population. Lifetime education attainment was based on the highest
166 educational qualification by the age of 43 years²⁶ and categorised as 1) no qualification or vocational
167 qualifications 2) ordinary, advanced secondary and 3) tertiary qualifications. Smoking status was
168 obtained from questionnaires and classified into current smoker, ex-smoker and never smoker at
169 age 53 and 60-64²⁹. Affective symptoms were self-reported at ages 60-64 and 69 years using the 28-
170 item General Health Questionnaire (GHQ-28)³⁰. A threshold, set at the recommended 4 (non-case) /
171 5 (case) cut was imposed on the GHQ-28 total score to determine case-level symptoms^{30,31}.

172 Statistical analyses

173 WMHV was log_e-transformed to account for skewness. ANOVA tests were used to examine
174 exposure and outcome variable differences at different timepoints. Within the selected sample,

175 missing data ranged from 0.1% to 27.9% for affective case symptoms (age 69) and IGF-I/IGFBP-3
176 molar ratio (age 60-64) respectively. To account for attrition at follow-up, missing data for exposure,
177 WLT, VLS and covariate variables were imputed using multiple imputation by chained equations
178 (MICE). Imputation models included all model variables, except for volumetric outcomes. Datasets
179 were imputed 20 times using a Bayesian linear regression model ³².

180 Linear regression models were used to assess the relationship between exposure and
181 outcomes. Results are presented as standardised beta values with 95% confidence intervals. To
182 determine whether the associations of IGFs and IGFBP-3 with cognition and brain volume differed by
183 sex, which may warrant stratification, an interaction term for sex was tested at the 10% significance
184 level for all exposures. No interaction was found between sex and exposure variables, so main
185 models were not stratified by sex. In addition, a quadratic term for the exposure was tested to
186 explore the possibility of non-linear associations. A quadratic relationship was observed between
187 IGF-II and general cognitive state and visual memory. Therefore, for associations with cognitive
188 state, IGF-II measurements were categorised into tertiles.

189 All statistical analyses were performed in R version 3.5.2 ³³. Multiple imputation was
190 performed using the 'mice' package in R³². Relevant R script is available upon request.

191

192 Results

193 Sample characteristics

194 Of the 1762 NSHD participants with cognitive state measured at age 69, 849 (48%) were
195 male, and 913 (52%) were female. The Insight 46 imaging sub-study at age 69-71 (mean age: 70.67
196 years, SD: 0.67) included 378 of these 1762 NSHD participants. Of these, 194 (51%) were male and
197 184 (49%) female (Table 1). Whilst those who attended the clinic at ages 53 and 60-64 were overall
198 healthier – less likely to smoke, higher Socioeconomic status (SES) and were more educated –, the

199 concentration of IGF-pathway components was similar between participants in the full sample and
200 those included in the final analysis (data not shown).

201 In the entire cohort at age 60-64, the overall pattern shows that IGF-I concentrations were
202 lower, and IGFBP3 levels substantially lower than at age 53 (Table 1). As a result, IGF-I/IGFBP3 ratio
203 was higher at age 60-64 than 53. IGF-II concentrations were lower at age 60-64 than age 53. Visual
204 memory (WLT) and processing speed (VLS) were lower with increasing age at investigation, as
205 previously described (Table 1)³⁴.

206 IGF-I

207 Higher IGF-I concentrations at age 53 and 60-64 were associated with better cognitive
208 function for the WLT and ACE-III cognitive measures, but not for the VLS (Figure 2). These
209 associations reached conventional levels of statistical significance for IGF-I at age 53 and ACE-III at
210 age 69 (β 0.07, 95% CI 0.02,0.12, $p = 0.008$). Adjustment for childhood cognition and educational
211 attainment attenuated this estimate to β 0.04, 95% CI 0.00,0.09, $p = 0.063$. Further adjustment for
212 smoking status and emotional symptoms did not alter the estimate (Figure 2). Excluding participants
213 with case-level affective symptoms at baseline had no qualitative impact on the magnitude or
214 direction of associations (data not shown).

215 In the subjects with imaging available, higher concentrations of IGF-I at age 60-64 were
216 directionally associated with a 8% lower WMHV at age 71 years (95% CI -19%, 3%, $p = 0.142$), yet did
217 not reach conventional levels of significance. Adjustment for the covariates did not affect this trend
218 (Figure 3).

219 IGF-I/IGFBP-3 ratio

220

221 IGF-I/IGFBP-3 ratio was associated with lower VLS and ACE-III scores (Figure 2). Elevated IGF-
222 I/IGFBP-3 concentrations at age 60-64 were associated with lower VLS score at age 69 (β -0.08, 95%
223 CI -0.15,-0.02, $p = 0.019$) (Figure 2). In contrast to IGF-I models, adjustment for childhood cognition

224 and education did not attenuate effect sizes. No clear associations with brain volume were observed
225 (Figure 3).

226 IGFBP-3

227 Higher concentrations of IGFBP-3 at age 60-64 were associated with faster processing speed
228 at age 60-64 and 69 (β 0.07, 95% CI 0.01,0.12, $p = 0.014$ and β 0.07, 95% CI 0.02,0.12, $p = 0.012$,
229 respectively) (Figure 2). The addition of covariates did not affect this association (Figure 2). Higher
230 concentrations of IGFBP-3 at age 60-64 were additionally associated with higher scores for memory
231 and cognitive state at age 69 (β 0.07, 95% CI 0.01,0.12, $p = 0.017$ and β 0.07, 95% CI 0.01,0.13, $p =$
232 0.033, respectively) (Figure 2). Adjustment for education and childhood cognition attenuated these
233 estimates to β 0.05, 95% CI 0:00,0.10, $p = 0.034$ and β 0.05, 95% CI 0:00,0.10, $p = 0.07$, respectively
234 (Figure 2).

235 Higher concentrations of IGFBP-3 at age 60-64 were additionally associated with a 10%
236 lower WMHV at age 71 years (β -0.1, 95% CI -0.21,0.00, $p = 0.059$) (Figure 3). Adjustment for the
237 covariates did not affect this association (Figure 3).

238 IGF-II

239 Similarly to IGF-I, higher concentrations of IGF-II were associated with better cognitive function for
240 the WLT and ACE-III cognitive measures, but not with VLS (Figure 4). At age 53, the lowest tertile of
241 circulating IGF-II concentration was associated with a lower ACE-III score at age 69 ($\text{score}_{\text{ACE-III}}$ 89.48,
242 95% CI 88.86,90.1, $p = 0.022$, tertile 1) (Figure 4). Similarly, the lowest tertile of IGF-II at age 53 were
243 associated with lower memory at age 69 ($\text{score}_{\text{WLT}}$ 20, 95% CI 19.35,20.65, $p = 0.085$, tertile 1). As for
244 IGF-I/IGFBP-3 ratio, no associations with brain volume were observed (Figure 3).

245 Discussion

246 In this UK population sample, IGF-I and -II concentrations at age 53, and IGF-I
247 concentrations at age 60-64, were positively associated with cognitive state at age 69, assessed by

248 the Addenbrooke's Cognitive Examination (ACE-III) and verbal memory, but not with processing
249 speed. Higher IGFBP-3 concentrations at age 60-64 were associated with overall higher cognition.
250 Adjustment for childhood cognition and educational attainment attenuated these associations, but
251 did not wholly account for them. In addition, IGF-I and IGFBP-3 at age 60-64 were associated with
252 lower white matter hyperintensity burden at age 69-71. Multivariable adjustment did not notably
253 alter these associations. Surprisingly, there was a trend towards worse cognitive state and
254 processing speed in those with higher IGF-I/IGFBP-3 ratio levels.

255 The positive relationship between IGF-I and general cognitive state reflects findings in the
256 Nurses Health Cohort (NHC), which found an association between IGF-I and verbal memory
257 attenuated after adjustment for educational attainment³⁵. NHC participants were of similar age to
258 NSHD participants at our 2nd baseline (60-64) years, and the main follow-up point (69 years).
259 Additionally, though, we suggest associations are similar in men and women, and show that
260 cognitive state is related to IGF-I sampled earlier in life, at age 53. Our findings conflict with
261 observation of a an adverse³⁶, or 'U' shaped relation³⁷, of IGF-I on cognition. The former analyses
262 were performed cross-sectionally in much older participants (≥ 95 years), while the latter spanned
263 ages 48-88 at follow-up. Age-dependent pleiotropic effects of IGF-I could potentially account these
264 conflicting findings; specifically, if IGF-I acts beneficially in middle age and early older age, but has
265 adverse effects in late older age. A 'U' shaped association may therefore be observed if participants
266 span early and late older age.

267 The IGF pathway plays an essential role in brain development and homeostasis, including
268 neurogenesis, neuronal differentiation and angiogenesis^{8,38}. Thus, the apparent beneficial
269 association of increased pathway activation with cognitive and brain outcomes may be driven by a
270 combination of developmental – with better cerebral development during foetal and early life and
271 neuroprotective pathways – with increased neurogenesis and improved outcomes following
272 cerebrovascular events^{8,39-41}. Prospective analyses of the Framingham Heart Study found that higher

273 concentrations of IGF-I were associated with larger brain volumes in healthy participants, potentially
274 suggestive of some protection against neurodegeneration⁴². Association magnitudes were doubled
275 in the parent versus the offspring cohort (mean ages 79 years and 61 years, respectively),
276 highlighting an important age dependency. Whilst we did not observe an association between IGF-I
277 and TBV, IGF-I was associated with lower WMHV, an indicator of cerebral small vessel damage. To
278 our knowledge, no previous study has explored the association between IGF-I and cerebral small
279 vessel disease. A 10-year prospective study found stroke incidence to be associated with lower
280 circulating IGF-I concentrations⁴³. Other studies have shown improved outcomes following ischemic
281 stroke in participants with higher IGF-I concentrations (41). In hypertensive mice, liver-specific IGF-I-
282 knockdown treatment was associated with increased and earlier incidence of cerebral
283 microhaemorrhages compared to control mice, likely due to impaired remodelling processes⁴⁵.
284 Mechanisms underlying protective effects of IGF-I on the vasculature include anti-inflammatory
285 properties, preservation of endothelial function, and a positive association with cardiovascular risk
286 factors such as obesity and insulin resistance⁴³. Whilst our findings did not reach conventional levels
287 of statistical significance, effect sizes, consistency with previous research, and strong biological
288 plausibility supports further investigation.

289 Surprisingly, however, associations with the IGF-I/IGFBP-3 ratio were opposite to those
290 observed for IGF-I alone, with the ratio associated with reduced processing speed and, to a lesser
291 degree, cognitive state. This can be explained by IGFBP-3 being positively associated with cognition
292 independently of IGF-I. IGFBPs have been shown to execute IGF-I independent actions, including
293 mediation of cell proliferation, apoptosis and survival^{46,47}. Furthermore, the age-related decline in
294 IGFBP-3 concentration was markedly greater than that for IGF-I resulting in an increase in IGF-
295 I/IGFBP-3 ratio between the two timepoints. Thus, the apparent negative association with cognitive
296 outcomes may be the product of the differential declines in the ratio components rather than a
297 biologically relevant association of the ratio with the cognitive outcomes.

298 We observed globally improved cognitive outcomes associated with increased circulating
299 IGFBP-3 concentrations. In line with our results, higher concentrations of IGFBP-3 were found to be
300 cross-sectionally associated with better cognitive state in women in the Mayo Clinic Study of Ageing
301 and reduced dementia incidence in men^{48,49}. In mice, null mutations in the *Igfbp3* gene resulted in
302 impaired neuronal structure and signalling and spatial working memory⁵⁰. However, findings are not
303 consistent across studies with higher concentrations of IGFBP-3 related to poorer cognition in males
304 in the Caerphilly Prospective Study (CaPS)¹⁰. Our findings highlight the importance of exploring
305 associations with individual factors that form a biologically meaningful molecular ratios, and
306 understanding age-related changes in exposures, which, as we show, may not be equivalent across
307 associated measures.

308 In addition to favourable cognitive outcomes, IGFBP-3 was conjointly associated with a 10%
309 reduction in WMHV in our study. Several studies have implied the possibility of a beneficial
310 association between IGFBP-3 and cerebral small vessel disease. High concentrations of circulating
311 IGFBP-3 are associated with reduced risk of ischaemic stroke and improved functional outcomes
312 following stroke events^{44,51,52}. In mice, IGFBP-3 was shown to protect retinal vasculature from
313 hyperoxia-induced vessel regression and, *in vitro*, promoted differentiation of endothelial precursor
314 cells to endothelial cells, indicating a potential pathway by which IGFBP-3 may reduce WMHV^{5,53}.

315 Few studies have examined the relationship between IGF-II and cognitive outcomes. IGF-II
316 has traditionally been seen as relatively unimportant beyond fetal development. However, there is
317 increasing evidence relating detrimental IGF-II expression to disease after birth^{4,54}. To our
318 knowledge, only one other study has investigated the role of IGF-II on later-life cognition. The CaPS
319 found a reduced occurrence of cognitive impairment without dementia with higher circulating IGF-II
320 concentrations, but not with cognitive state. In addition, they did not find an association between
321 IGF-I and cognitive function¹⁰. In our study, we found a time-dependent association between higher
322 IGF-II at age 53 and better visual memory and cognitive state at age 69, presenting similarities to the

323 results obtained from the IGF-I models. This suggests a common pathway, likely via signalling
324 downstream of the IGF-1R. Discrepancies between our findings and those from the CaPS may be
325 driven by choice of outcome. The CaPS studied CIND, dementia and ‘normal’ cognitive ageing
326 separately, therefore excluding participants with CIND or dementia from models studying ‘normal’
327 cognitive ageing. It is possible that ‘normal’ and ‘abnormal’ cognitive ageing are driven by separate
328 mechanisms and IGF-I and IGF-II might be protective in the context of ‘abnormal’ cognitive ageing
329 only.

330 Our study has some important strengths, including a prospective design with extended
331 follow-up (16 years) and important confounders, including childhood cognition. To our knowledge, it
332 is the only study to use repeat exposure and outcome measures to better understand the temporal
333 relationship between IGFs and cognition. Age-dependent relationships may reflect separate
334 underlying biological pathways acting at different points in the life course. In addition, it is the first
335 study to investigate both cognitive function and structural brain measures. However, it is important
336 to consider some limitations of the present study. Whilst associations were robust to adjustments,
337 the observational methods used here cannot discount the possibility of residual confounding. For
338 instance, this study did not adjust for chronic diseases which may impact IGF serum levels and
339 associate with brain health independently of the IGF pathway ⁵⁵.

340 To investigate active IGF-I, this study used the ratio of IGF-I to IGFBP-3. However, we
341 acknowledge this to be an imprecise measure of IGF-I activity, as other binding proteins and
342 pathway components are involved in regulating pathway activation. Furthermore, binding proteins
343 have been shown to have IGF-I independent actions ⁴⁶. Conflicting results between IGF-I and IGF-
344 I/IGFBP-3 in our study were seemingly explained by IGF-I-independent associations between IGFBP-3
345 and cognition, thereby supporting future study of IGFBP-3 independently from IGF-I. However, the
346 use of ‘free’ IGF-I may provide a more accurate view of the role of unbound circulating IGF-I on brain
347 health ⁵⁶.

348 Blood samples from ages 53 and 60-64 were assayed together and stored at -80°C until
349 quantification. Therefore, measures will have been stored for varying lengths of time which may
350 affect results, particularly if the protein is prone to degradation. However, IGF-I, -II and IGFBP-3
351 levels have previously been shown to remain stable following 9 years of -80°C storage, which
352 reduced the likelihood of this occurring in our study⁵⁷. Furthermore, biomarker concentrations may
353 be affected by the differential fasting status when blood samples were collected at ages 53 (non-
354 fasting) and 60-64y (fasting). However, Bereket *et al* (1996) found no associations between IGF-I
355 and IGFBP-3 concentration and short-term fasting thus limiting the risk of fasting status being an
356 important biasing factor in our study⁵⁸. Finally, with the latest follow-up at age 69, participants are
357 still not old enough for severe cognitive decline to be common, which could mean limited statistical
358 power to detect moderate to small associations.

359 In light of these findings, we would suggest further studies to determine the exact domains
360 which may be affected by IGF-I, -II and IGFBP-3 concentrations. This could be done by using an array
361 of cognitive tests that probe distinct cognitive domains. Further studies continuing to use repeat IGF
362 and IGFBP exposures in relation to cognition measures across the life course may help provide a
363 better understanding of the complex relationship between the two. Re-examination of the
364 relationships in the NSHD at an older age would be essential to understand age-dependent effects
365 and potentially address the current inconsistencies in the field. Furthermore, genetic approaches to
366 study the association between polygenic risk scores and cognition across the age spectrum may
367 provide an alternate method to investigate relationships across the life course.

368 While repeat measures in our study have highlighted the importance of time of exposure,
369 outcome and follow-up period, further work is required to disentangle the temporal nature of the
370 IIS-brain health relationship. Regular IGF-I, -II, IGFBP-3 and cognition measures throughout the life
371 course would help to elucidate this. As autocrine and paracrine IGF-I concentrations vary with age,
372 narrowing the age range at each sample collection could also prove essential^{59,60}. The wide age

373 range in a number of studies may prove responsible for some of the heterogeneity currently
374 observed in results^{37,56,61}.

375 In conclusion, in this UK birth cohort, higher circulating IGF-I and -II levels were prospectively
376 associated with a favourable cognitive state, whilst IGF-I/IGFBP-3 ratio was associated with slower
377 processing speed. IGF-II was additionally associated with better memory performance. IGFBP-3 was
378 independently associated with cognitive state, memory, processing speed and WMHV. The present
379 study has not only added to our understanding of the IIS-cognition relationship, but crucially, it has
380 elucidated the importance of using a breadth of neuroimaging, cognitive function and state to
381 understand more holistically how IGFs and IGFBPs relate to brain health from mid to later life.

382

383 [Acknowledgements](#)

384 The authors are grateful for the continued support of the NSHD study members without whom this
385 study would not have been possible. We would also like to acknowledge Dr. Andy Wong for
386 assistance in data extraction and management, and the Insight 46 study team.

387

388 [Data availability:](#)

389 Restrictions apply to the availability of some or all data generated or analyzed during this study to
390 preserve patient confidentiality or because they were used under license. The corresponding author
391 will on request detail the restrictions and any conditions under which access to some data may be
392 provided.

393 References

394

- 395 1. Milman S, Huffman DM, Barzilai N. The somatotrophic axis in human aging: Framework for the
396 current state of knowledge and future research. *Cell Metab.* 2016;23(6):980-989.
397 doi:10.1016/j.cmet.2016.05.014
- 398 2. Baxter RC. Insulin-like growth factor (IGF)-binding proteins: interactions with IGFs and intrinsic
399 bioactivities. *Am J Physiol Endocrinol Metab.* 2000;278(6):E967-976.
400 doi:10.1152/ajpendo.2000.278.6.E967
- 401 3. Juul A, Main K, Blum WF, Lindholm J, Ranke MB, Skakkebaek NE. The ratio between serum
402 levels of insulin-like growth factor (IGF)-I and the IGF binding proteins (IGFBP-1, 2 and 3)
403 decreases with age in healthy adults and is increased in acromegalic patients. *Clin Endocrinol*
404 *(Oxf)*. 1994;41(1):85-93. doi:10.1111/j.1365-2265.1994.tb03788.x
- 405 4. Chao W, D'Amore PA. IGF2: Epigenetic regulation and role in development and disease.
406 *Cytokine Growth Factor Rev.* 2008;19(2):111-120. doi:10.1016/j.cytogfr.2008.01.005
- 407 5. Jogie-Brahim S, Feldman D, Oh Y. Unraveling Insulin-Like Growth Factor Binding Protein-3
408 Actions in Human Disease. *Endocr Rev.* 2009;30(5):417-437. doi:10.1210/er.2008-0028
- 409 6. Dyer AH, Vahdatpour C, Sanfeliu A, Tropea D. The role of Insulin-Like Growth Factor 1 (IGF-1) in
410 brain development, maturation and neuroplasticity. *Neuroscience.* 2016;325:89-99.
411 doi:10.1016/j.neuroscience.2016.03.056
- 412 7. Abuzzahab MJ, Schneider A, Goddard A, et al. IGF-I Receptor Mutations Resulting in
413 Intrauterine and Postnatal Growth Retardation. *N Engl J Med.* 2003;349(23):2211-2222.
414 doi:10.1056/NEJMoa010107
- 415 8. Frater J, Lie D, Bartlett P, McGrath JJ. Insulin-like Growth Factor 1 (IGF-1) as a marker of
416 cognitive decline in normal ageing: A review. *Ageing Res Rev.* 2018;42:14-27.
417 doi:10.1016/j.arr.2017.12.002
- 418 9. Gubbi S, Quipildor GF, Barzilai N, Huffman DM, Milman S. 40 YEARS of IGF1: IGF1: the Jekyll
419 and Hyde of the aging brain. *J Mol Endocrinol.* 2018;61(1):T171-T185. doi:10.1530/JME-18-
420 0093
- 421 10. Green CJ, Holly JMP, Bayer A, et al. The role of IGF-I, IGF-II, and IGFBP-3 in male cognitive aging
422 and dementia risk: the Caerphilly Prospective Study. *J Alzheimers Dis JAD.* 2014;41(3):867-875.
423 doi:10.3233/JAD-132183
- 424 11. Kuh D, Wong A, Shah I, et al. The MRC National Survey of Health and Development reaches age
425 70: maintaining participation at older ages in a birth cohort study. *Eur J Epidemiol.*
426 2016;31(11):1135-1147. doi:10.1007/s10654-016-0217-8
- 427 12. Wadsworth M, Kuh D, Richards M, Hardy R. Cohort Profile: The 1946 National Birth Cohort
428 (MRC National Survey of Health and Development). *Int J Epidemiol.* 2006;35(1):49-54.
429 doi:10.1093/ije/dyi201

- 430 13. Lane CA, Parker TD, Cash DM, et al. Study protocol: Insight 46 – a neuroscience sub-study of
431 the MRC National Survey of Health and Development. *BMC Neurol.* 2017;17(1):75.
432 doi:10.1186/s12883-017-0846-x
- 433 14. Leung KK, Barnes J, Modat M, et al. Brain MAPS: An automated, accurate and robust brain
434 extraction technique using a template library. *NeuroImage.* 2011;55(3):1091-1108.
435 doi:10.1016/j.neuroimage.2010.12.067
- 436 15. Jorge Cardoso M, Leung K, Modat M, et al. STEPS: Similarity and Truth Estimation for
437 Propagated Segmentations and its application to hippocampal segmentation and brain
438 parcellation. *Med Image Anal.* 2013;17(6):671-684. doi:10.1016/j.media.2013.02.006
- 439 16. Sudre CH, Cardoso MJ, Bouvy WH, Biessels GJ, Barnes J, Ourselin S. Bayesian Model Selection
440 for Pathological Neuroimaging Data Applied to White Matter Lesion Segmentation. *IEEE Trans*
441 *Med Imaging.* 2015;34(10):2079-2102. doi:10.1109/TMI.2015.2419072
- 442 17. Lane CA, Barnes J, Nicholas JM, et al. Associations Between Vascular Risk Across Adulthood and
443 Brain Pathology in Late Life: Evidence From a British Birth Cohort. *JAMA Neurol.*
444 2020;77(2):175-183. doi:10.1001/jamaneurol.2019.3774
- 445 18. Lane CA, Barnes J, Nicholas JM, et al. Associations between blood pressure across adulthood
446 and late-life brain structure and pathology in the neuroscience substudy of the 1946 British
447 birth cohort (Insight 46): an epidemiological study. *Lancet Neurol.* 2019;18(10):942-952.
448 doi:10.1016/S1474-4422(19)30228-5
- 449 19. Lemmey A, Maddison P, Breslin A, et al. Association between insulin-like growth factor status
450 and physical activity levels in rheumatoid arthritis. *J Rheumatol.* 2001;28(1):29-34.
- 451 20. Bann D, Holly JMP, Lashen H, et al. Changes in insulin-like growth factor-I and -II associated
452 with fat but not lean mass in early old age. *Obes Silver Spring Md.* 2015;23(3):692-698.
453 doi:10.1002/oby.21002
- 454 21. Kucera R, Topolcan O, Pecen L, et al. Reference values of IGF1, IGFBP3 and IGF1/IGFBP3 ratio in
455 adult population in the Czech Republic. *Clin Chim Acta.* 2015;444:271-277.
456 doi:10.1016/j.cca.2015.02.036
- 457 22. Richards M, Barnett JH, Xu MK, et al. Lifetime affect and midlife cognitive function: prospective
458 birth cohort study. *Br J Psychiatry.* 2014;204(3):194-199. doi:10.1192/bjp.bp.113.128942
- 459 23. Richards M, Shipley B, Fuhrer R, Wadsworth MEJ. Cognitive ability in childhood and cognitive
460 decline in mid-life: longitudinal birth cohort study. *BMJ.* 2004;328(7439):552.
461 doi:10.1136/bmj.37972.513819.EE
- 462 24. Hsieh S, Schubert S, Hoon C, Mioshi E, Hodges JR. Validation of the Addenbrooke's Cognitive
463 Examination III in frontotemporal dementia and Alzheimer's disease. *Dement Geriatr Cogn*
464 *Disord.* 2013;36(3-4):242-250. doi:10.1159/000351671
- 465 25. Kuh D, Hardy R, Richards M, et al. MRC NSHD 2013-2018 Data. Published online 2016.
466 doi:10.5522/NSHD/Q103
- 467 26. Richards M, James S-N, Sizer A, et al. Identifying the lifetime cognitive and socioeconomic
468 antecedents of cognitive state: seven decades of follow-up in a British birth cohort study. *BMJ*
469 *Open.* 2019;9(4):e024404. doi:10.1136/bmjopen-2018-024404

- 470 27. Kaklamani VG, Linos A, Kaklamani E, Markaki I, Mantzoros C. Age, Sex, and Smoking Are
471 Predictors of Circulating Insulin-Like Growth Factor 1 and Insulin-Like Growth Factor–Binding
472 Protein 3. *J Clin Oncol*. 1999;17(3):813-813. doi:10.1200/JCO.1999.17.3.813
- 473 28. Chigogora S, Zaninotto P, Kivimaki M, Steptoe A, Batty GD. Insulin-like growth factor 1 and risk
474 of depression in older people: the English Longitudinal Study of Ageing. *Transl Psychiatry*.
475 2016;6(9):e898-e898. doi:10.1038/tp.2016.167
- 476 29. Hardy R, Maddock J, Ghosh AK, Hughes AD, Kuh D. The relationship between pubertal timing
477 and markers of vascular and cardiac structure and function in men and women aged 60–64
478 years. *Sci Rep*. 2019;9. doi:10.1038/s41598-019-47164-x
- 479 30. Goldberg DP, Hillier VF. A scaled version of the General Health Questionnaire. *Psychol Med*.
480 1979;9(1):139-145. doi:10.1017/s0033291700021644
- 481 31. James S-N, Davis D, O’Hare C, et al. Lifetime affective problems and later-life cognitive state:
482 Over 50 years of follow-up in a British birth cohort study. *J Affect Disord*. 2018;241:348-355.
483 doi:10.1016/j.jad.2018.07.078
- 484 32. Buuren S van, Groothuis-Oudshoorn K. mice: Multivariate Imputation by Chained Equations in
485 R. *J Stat Softw*. 2011;45(1):1-67. doi:10.18637/jss.v045.i03
- 486 33. R Core Team. *R: A Language and Environment for Statistical Computing*. R Foundation for
487 Statistical Computing; 2018. <https://www.R-project.org/>
- 488 34. Davis D, Bendayan R, Muniz Terrera G, Hardy R, Richards M, Kuh D. Decline in Search Speed
489 and Verbal Memory Over 26 Years of Midlife in a British Birth Cohort. *Neuroepidemiology*.
490 2017;49(3-4):121-128. doi:10.1159/000481136
- 491 35. Okereke O, Kang JH, Ma J, Hankinson SE, Pollak MN, Grodstein F. Plasma IGF-I levels and
492 cognitive performance in older women. *Neurobiol Aging*. 2007;28(1):135-142.
493 doi:10.1016/j.neurobiolaging.2005.10.012
- 494 36. Perice L, Barzilai N, Verghese J, et al. Lower circulating insulin-like growth factor-I is associated
495 with better cognition in females with exceptional longevity without compromise to muscle
496 mass and function. *Aging*. 2016;8(10):2414-2424. doi:10.18632/aging.101063
- 497 37. Tumati S, Burger H, Martens S, van der Schouw YT, Aleman A. Association between Cognition
498 and Serum Insulin-Like Growth Factor-1 in Middle-Aged & Older Men: An 8 Year Follow-Up
499 Study. *PloS One*. 2016;11(4):e0154450. doi:10.1371/journal.pone.0154450
- 500 38. Piriz J, Muller A, Trejo JL, Torres-Aleman I. IGF-I and the aging mammalian brain. *Exp Gerontol*.
501 2011;46(2-3):96-99. doi:10.1016/j.exger.2010.08.022
- 502 39. Serhan A, Aerts JL, Boddeke EWGM, Kooijman R. Neuroprotection by Insulin-like Growth
503 Factor-1 in Rats with Ischemic Stroke is Associated with Microglial Changes and a Reduction in
504 Neuroinflammation. *Neuroscience*. 2020;426:101-114. doi:10.1016/j.neuroscience.2019.11.035
- 505 40. Deng W, Aimone JB, Gage FH. New neurons and new memories: how does adult hippocampal
506 neurogenesis affect learning and memory? *Nat Rev Neurosci*. 2010;11(5):339-350.
507 doi:10.1038/nrn2822

- 508 41. Fernandez AM, Torres-Alemán I. The many faces of insulin-like peptide signalling in the brain.
509 *Nat Rev Neurosci.* 2012;13(4):225-239. doi:10.1038/nrn3209
- 510 42. Westwood AJ, Beiser A, DeCarli C, et al. Insulin-like growth factor-1 and risk of Alzheimer
511 dementia and brain atrophy. *Neurology.* 2014;82(18):1613-1619.
512 doi:10.1212/WNL.0000000000000382
- 513 43. Saber H, Himali JJ, Beiser AS, et al. Serum Insulin-Like Growth Factor 1 and the risk of Ischemic
514 Stroke: The Framingham Study. *Stroke.* 2017;48(7):1760-1765.
515 doi:10.1161/STROKEAHA.116.016563
- 516 44. Åberg D, Jood K, Blomstrand C, et al. Serum IGF-I Levels Correlate to Improvement of
517 Functional Outcome after Ischemic Stroke. *J Clin Endocrinol Metab.* 2011;96(7):E1055-E1064.
518 doi:10.1210/jc.2010-2802
- 519 45. Tarantini S, Valcarcel-Ares NM, Yabluchanskiy A, et al. Insulin-like growth factor 1 deficiency
520 exacerbates hypertension-induced cerebral microhemorrhages in mice, mimicking the aging
521 phenotype. *Aging Cell.* 2017;16(3):469-479. doi:10.1111/acel.12583
- 522 46. Allard JB, Duan C. IGF-Binding Proteins: Why Do They Exist and Why Are There So Many? *Front*
523 *Endocrinol.* 2018;9. doi:10.3389/fendo.2018.00117
- 524 47. Baxter RC. Insulin-like growth factor binding protein-3 (IGFBP-3): Novel ligands mediate
525 unexpected functions. *J Cell Commun Signal.* 2013;7(3):179-189. doi:10.1007/s12079-013-
526 0203-9
- 527 48. Wennberg AMV, Hagen CE, Machulda MM, et al. The association between peripheral total IGF-
528 1, IGFBP-3, and IGF-1/IGFBP-3 and functional and cognitive outcomes in the Mayo Clinic Study
529 of Aging. *Neurobiol Aging.* 2018;66:68-74. doi:10.1016/j.neurobiolaging.2017.11.017
- 530 49. Almeida OP, Hankey GJ, Yeap BB, Paul Chubb SA, Gollege J, Flicker L. Risk of prevalent and
531 incident dementia associated with insulin-like growth factor and insulin-like growth factor-
532 binding protein 3. *Mol Psychiatry.* 2018;23(8):1825-1829. doi:10.1038/mp.2017.152
- 533 50. Dai H, Goto Y, Itoh M. Insulin-Like Growth Factor Binding Protein-3 Deficiency Leads to
534 Behavior Impairment with Monoaminergic and Synaptic Dysfunction. *Am J Pathol.*
535 2017;187(2):390-400. doi:10.1016/j.ajpath.2016.10.011
- 536 51. Johnsen SP, Hundborg HH, Sørensen HT, et al. Insulin-Like Growth Factor (IGF) I, -II, and IGF
537 Binding Protein-3 and Risk of Ischemic Stroke. *J Clin Endocrinol Metab.* 2005;90(11):5937-5941.
538 doi:10.1210/jc.2004-2088
- 539 52. Armbrust M, Worthmann H, Dengler R, et al. Circulating Insulin-like Growth Factor-1 and
540 Insulin-like Growth Factor Binding Protein-3 predict Three-months Outcome after Ischemic
541 Stroke. *Exp Clin Endocrinol Diabetes Off J Ger Soc Endocrinol Ger Diabetes Assoc.*
542 2017;125(7):485-491. doi:10.1055/s-0043-103965
- 543 53. Chang K-H, Chan-Ling T, McFarland EL, et al. IGF binding protein-3 regulates hematopoietic
544 stem cell and endothelial precursor cell function during vascular development. *Proc Natl Acad*
545 *Sci.* 2007;104(25):10595-10600. doi:10.1073/pnas.0702072104
- 546 54. Reik W, Constancia M, Dean W, et al. Igf2 imprinting in development and disease. *Int J Dev*
547 *Biol.* 2000;44(1):145-150.

- 548 55. Min DY, Jung E, Kim J, Lee YH, Shin SY. Leptin stimulates IGF-1 transcription by activating AP-1
549 in human breast cancer cells. *BMB Rep.* 2019;52(6):385-390.
- 550 56. Kalmijn S, Janssen J a. MJL, Pols H a. P, Lamberts SWJ, Breteler MMB. A Prospective Study on
551 Circulating Insulin-Like Growth Factor I (IGF-I), IGF-Binding Proteins, and Cognitive Function in
552 the Elderly. *J Clin Endocrinol Metab.* 2000;85(12):4551-4555. doi:10.1210/jcem.85.12.7033
- 553 57. Ito Y, Nakachi K, Imai K, et al. Stability of Frozen Serum Levels of Insulin-like Growth Factor-I,
554 Insulin-like Growth Factor-II, Insulin-like Growth Factor Binding Protein-3, Transforming
555 Growth Factor β , Soluble Fas, and Superoxide Dismutase Activity for the JACC Study. *J*
556 *Epidemiol.* 2005;15(Supplement_1):S67-S73. doi:10.2188/jea.15.S67
- 557 58. Bereket A, Wilson TA, Blethen SL, et al. Effect of short-term fasting on free/dissociable insulin-
558 like growth factor I concentrations in normal human serum. *J Clin Endocrinol Metab.*
559 1996;81(12):4379-4384. doi:10.1210/jcem.81.12.8954045
- 560 59. Yamamoto H, Sohmiya M, Oka N, Kato Y. Effects of aging and sex on plasma insulin-like growth
561 factor I (IGF-I) levels in normal adults. *Acta Endocrinol (Copenh).* 1991;124(5):497-500.
562 doi:10.1530/acta.0.1240497
- 563 60. Joseph D'Ercole A, Ye P. Expanding the Mind: Insulin-Like Growth Factor I and Brain
564 Development. *Endocrinology.* 2008;149(12):5958-5962. doi:10.1210/en.2008-0920
- 565 61. Al-Delaimy WK, von Muhlen D, Barrett-Connor E. IGF-1 and IGFBP-1 and Cognitive Function in
566 Older Men and Women. *J Am Geriatr Soc.* 2009;57(8):1441-1446. doi:10.1111/j.1532-
567 5415.2009.02343.x

568

569

570

571

572

573

574 **Table 1**

	NSHD (n=1762)			Insight 46 (n=378)	P-value ¹
	53 Years	60-64 Years	69 Years	69 – 71 years	
Exposures					
IGF-I levels (nmol/L)	26.22 (9.00)	23.00 (7.71)			< 0.001
IGFBP-3 levels (nmol/L)	173.22 (39.31)	120.11 (30.16)			< 0.001
IGF-I/IGFBP-3 molar ratio	0.16 (0.06)	0.20 (0.06)			< 0.001
IGF-II levels (nmol/L)	99.82 (32.36)	87.86 (38.60)			< 0.001
Cognitive tests					
Addenbrooke's Cognitive Examination (ACE-III) score			91.52 (6.01)		
Visual Letter Search (VLS) score	283.52 (73.34)	268.25 (70.54)	263.56 (74.32)		< 0.001
Word Learning Test (WLT) score	24.87 (6.12)	24.68 (6.06)	22.38 (6.13)		< 0.001
Insight 46 MRI measures					
Age at scan				70.67 (0.67)	
Hippocampal volume (ml)				3.13 (0.33)	
Total intracranial volume (ml)				1432.86 (127.58)	
White matter hyperintensity volume ² (ml)				3.08 (5.19)	
Whole brain volume (ml)				1101.38 (95.34)	
Model covariates					
Early life cognition	0.14 (0.69)				
Affective Symptoms Case Status					
Non-case	1313 (81%)	1247 (83%)	1505 (86%)		
Case	316 (19%)	264 (17%)	251 (14%)		
Educational attainment					
No qualifications/vocational only	637 (36%)				
O-Level/A-Level or equivalent	835 (48%)				
Higher	272 (16%)				
Smoking status					
Current smoker	315 (19%)	148 (10%)	525 (9%)		
Ex smoker	842 (51%)	875 (58%)	1061 (61%)		
Never smoker	507 (30%)	489 (32%)	525 (30%)		

575 ¹P-values were calculated using a one-way ANOVA for continuous variables. ²Median and interquartile range
 576 presented for non-normally distributed variables

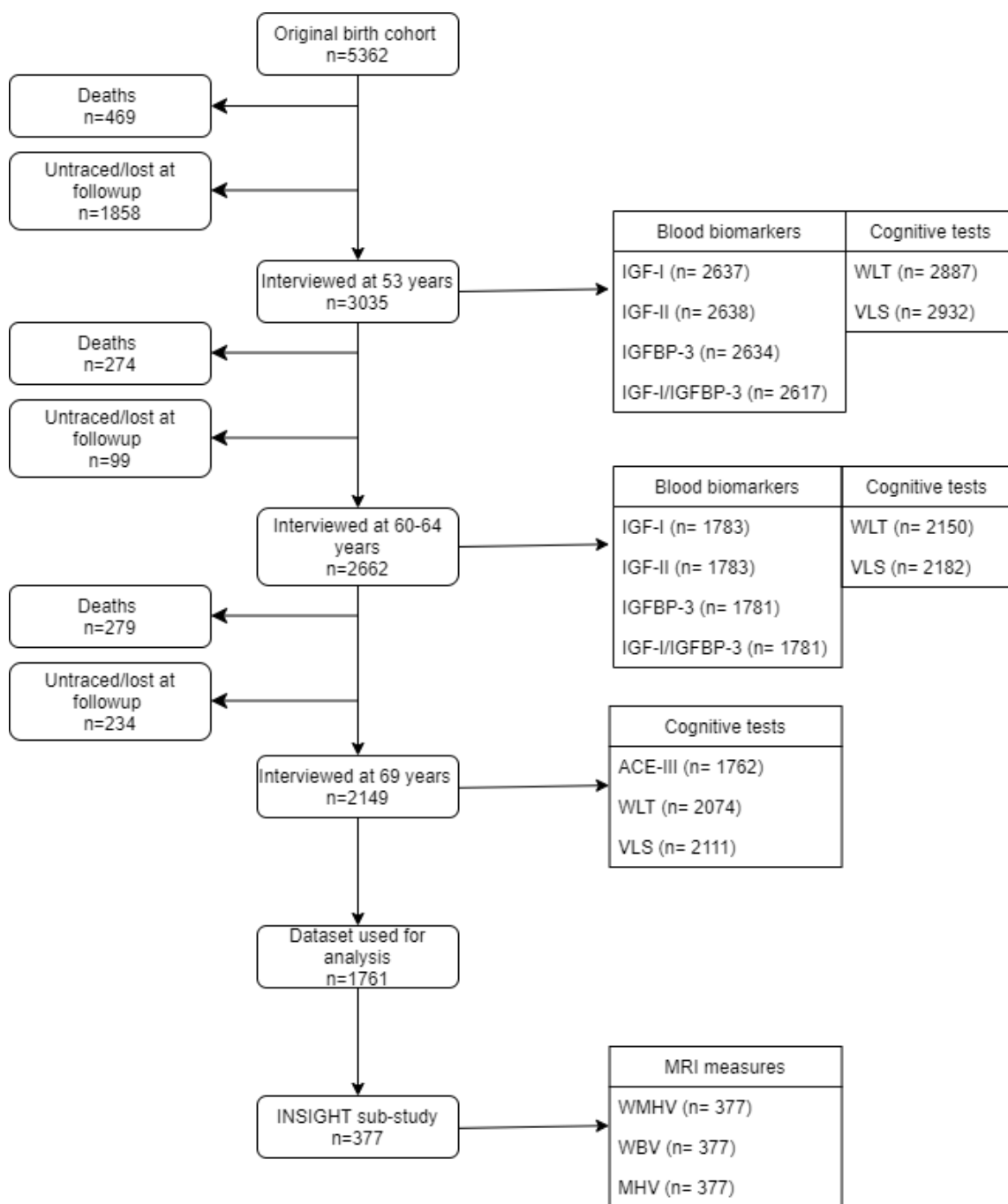
577

578 Figures

579 Figure 1

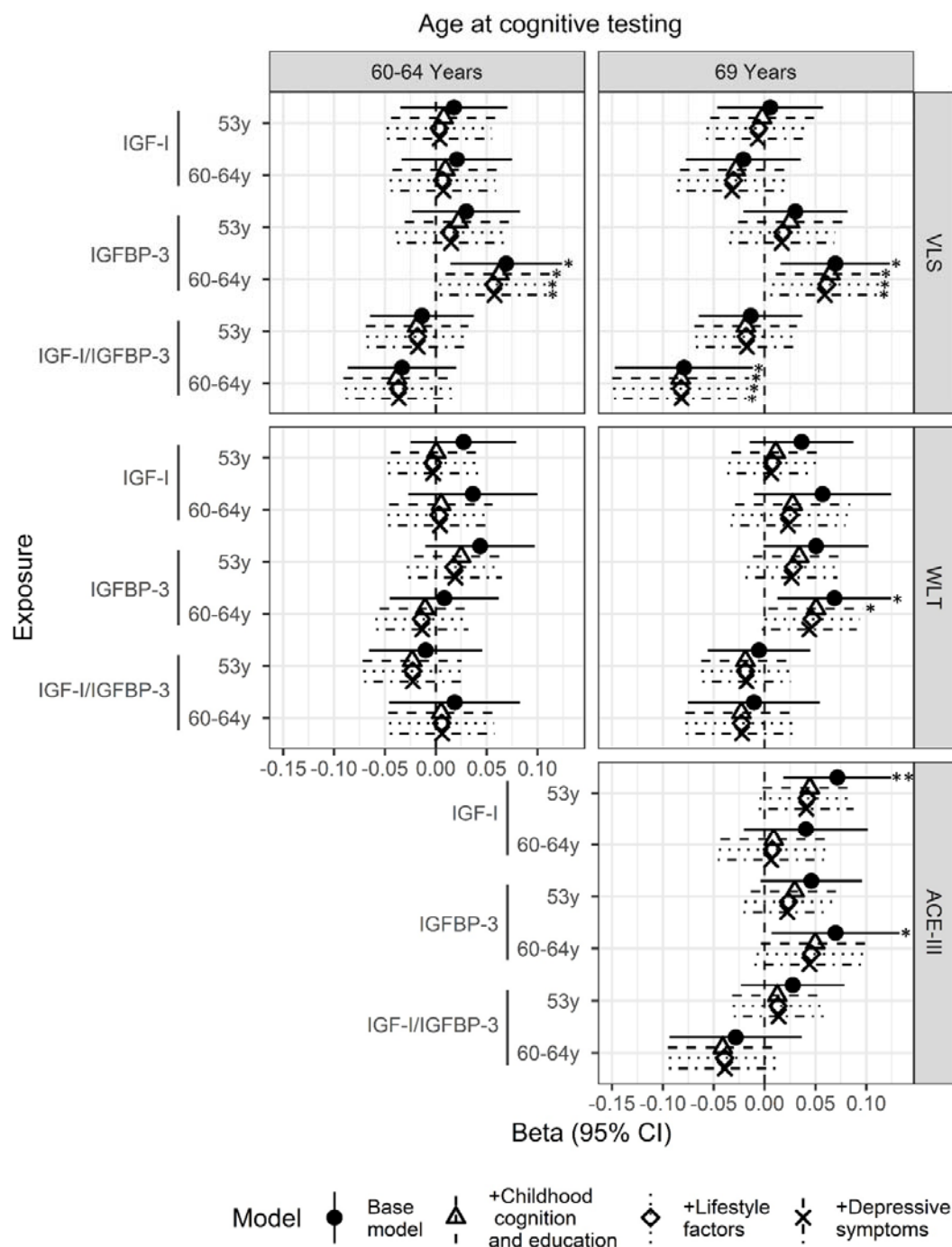
580

581



582

583 Figure 2



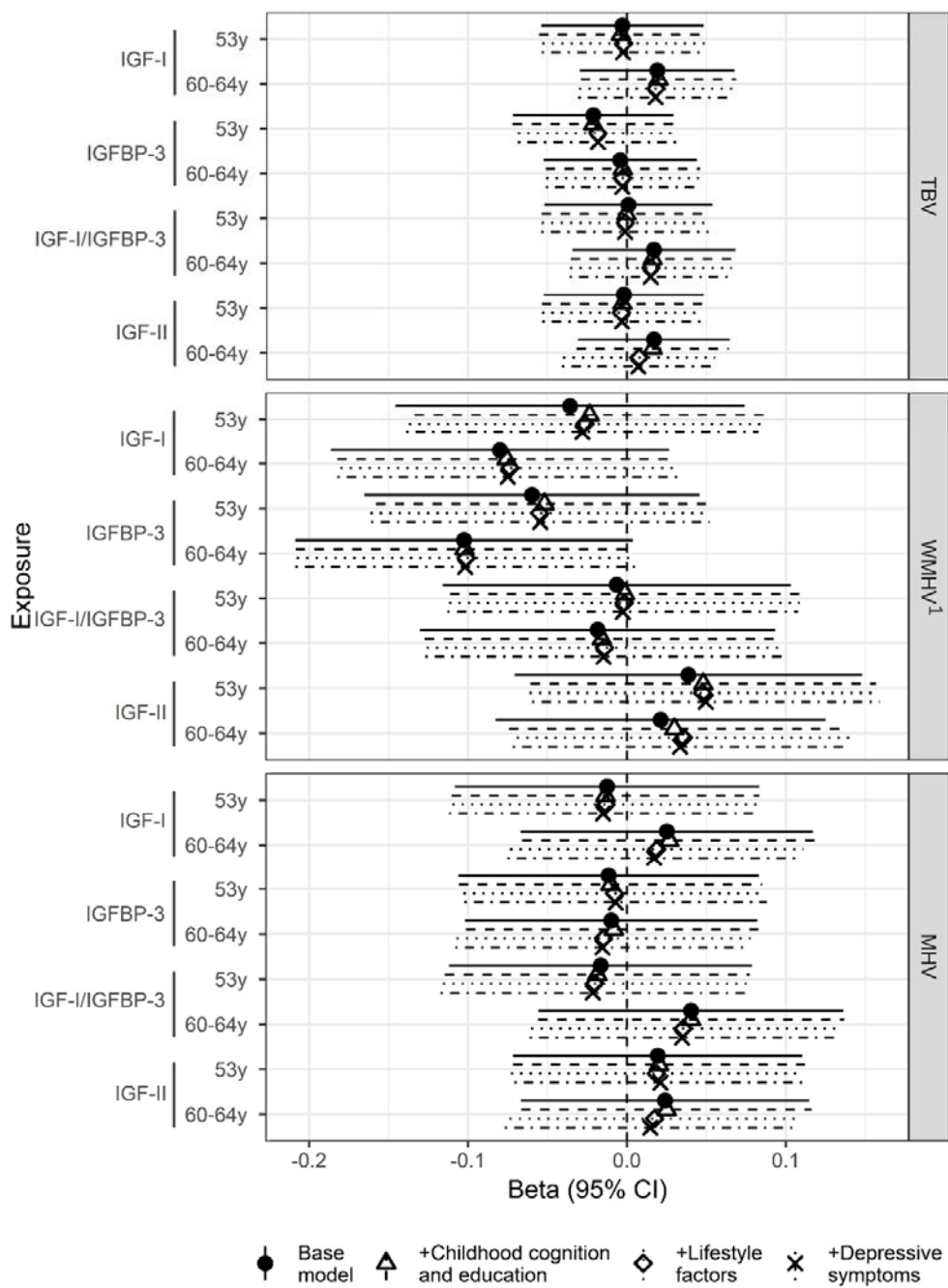
584

585

586

587

588 Figure 3



589

590

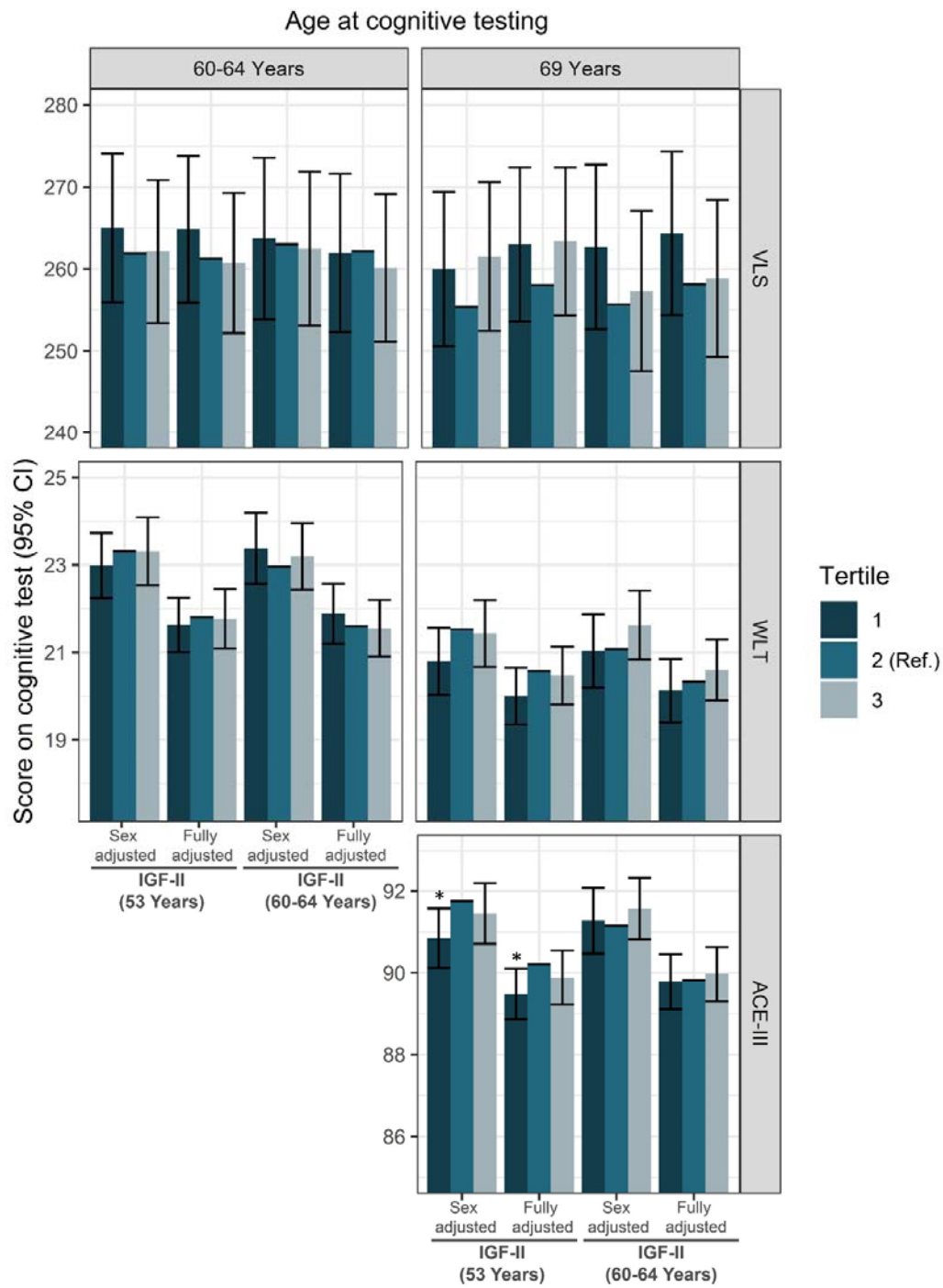
591

592

593

594 Figure 4

595



597

598 Legends for Figures and Tables

599 Table 1:

600 Table presents variable information for the sample (n = 1762 (NSHD) and n= 378 (INSIGHT)) prior to
601 imputation.

602

603 Figure 1:

604 NSHD study flow diagram. Abbreviations: Insulin-Growth Factor-I (IGF-I), Insulin Growth Factor-II
605 (IGF-II), Insulin-Growth Factor Binding Protein-3 (IGFBP-3), Addenbrookes Cognitive Exam-III (ACE-
606 III), Word Learning Test (WLT), VLS (Visual Letter Search) test, Whole Brain Volume (WBV), White
607 Matter Hyperintensity volume (WMHV), Mean Hippocampal Volume (MHV).

608 Figure 2:

609 Beta coefficient and 95% confidence interval for the effect of IGF-I, IGFBP-3 and IGF-I/IGFBP-3 at
610 ages 53y and 60-64y on visual memory (WLT) and processing speed (VLS) at ages 60-64y and 69y and
611 cognitive state (ACE-III) at age 69y. Models were adjusted for sex (base model), sex, early life
612 cognition and lifetime education (+ childhood cognition and education model), sex, early life
613 cognition, lifetime education and smoking (+ lifestyle factors) and sex, early life cognition, lifetime
614 education, smoking and depressive symptoms (+depressive symptoms). Abbreviations: Insulin-
615 Growth Factor-I (IGF-I), Insulin-Growth Factor Binding Protein-3 (IGFBP-3), Addenbrookes Cognitive
616 Exam-III (ACE-III), Word Learning Test (WLT), VLS (Visual Letter Search) test. * significant at $p < .05$,
617 ** significant at $p < .01$.

618

619

620

621 **Figure 3:**

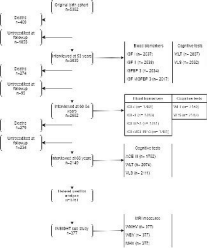
622 Beta coefficient and 95% confidence interval for the effect of IGF-I, IGFBP-3 and IGF-I/IGFBP-3 at
623 ages 53y and 60-64y on Total Brain Volume (TBV), White Matter Hyperintensity volume (WMHV) and
624 Mean Hippocampal Volume (MHV) at age 69y in the Insight 46 sub-study. Models were adjusted for
625 sex and age at scan (base model), sex, early life cognition and lifetime education (+ childhood
626 cognition and education model), sex, age at scan, early life cognition, lifetime education and smoking
627 (+ lifestyle factors) and sex, age at scan, early life cognition, lifetime education, smoking and
628 depressive symptoms (+depressive symptoms). ¹Effect sizes are shown on a logarithmic scale.*
629 significant at $p < .05$, ** significant at $p < .01$.

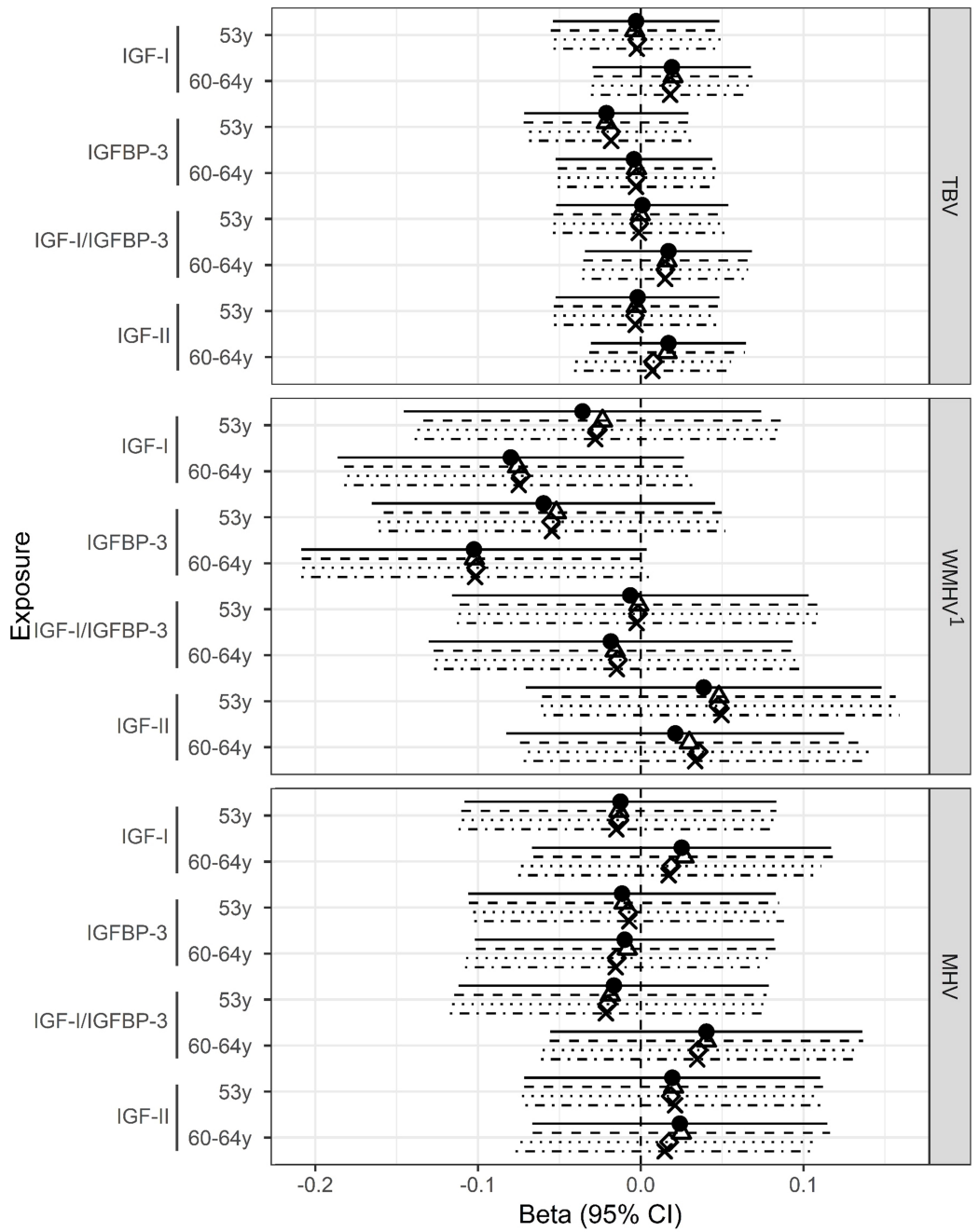
630 **Figure 4:**

631 Predicted scores and 95% confidence intervals for the effect of IGF-II tertiles at ages 53y and 60-64y
632 on ACE-III, WLT and VLS predicted score, in sex-adjusted and fully adjusted models (sex, early life
633 cognition, lifetime education, smoking and depressive symptoms). Tertile 2 presents the reference
634 category used in the regression. Abbreviations: Insulin-Growth Factor-I (IGF-I), Insulin-Growth Factor
635 Binding Protein-3 (IGFBP-3), Addenbrooke's Cognitive Exam-III (ACE-III), Word Learning Test (WLT),
636 VLS (Visual Letter Search) test. * significant at $p < .05$, ** significant at $p < .01$.

637

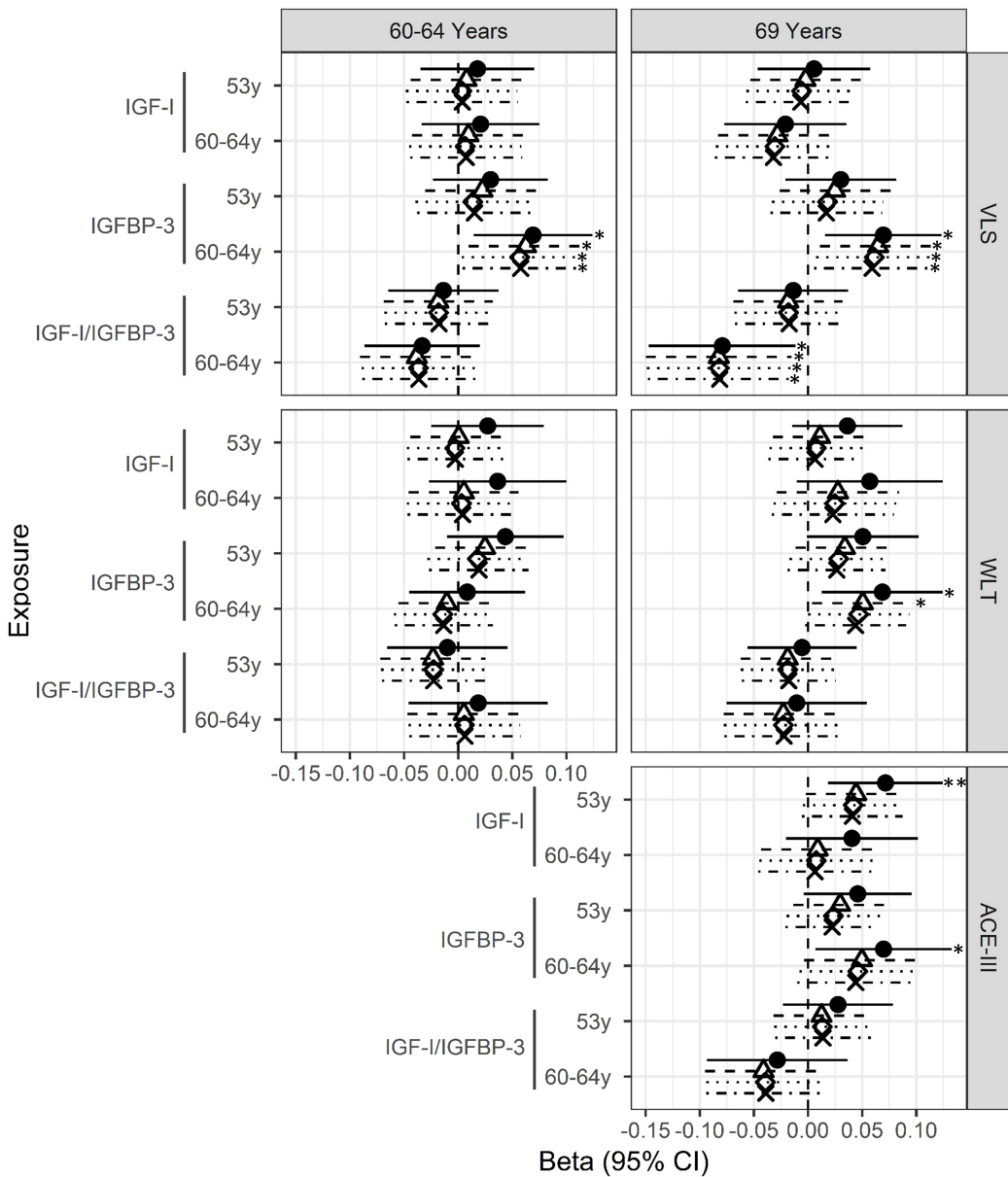
638





Base model
 +Childhood cognition and education
 +Lifestyle factors
 +Depressive symptoms

Age at cognitive testing



Model ● Base model ▲ +Childhood cognition and education ◇ +Lifestyle factors ✕ +Depressive symptoms

Age at cognitive testing

