

24

25 ⁷Lerner Center for Public Health Promotion, Johns Hopkins Bloomberg School of Public Health,

26 Baltimore, Maryland

27

28 * Corresponding author

29 Brian Neelon, PhD

30 Department of Public Health Science

31 Medical University of South Carolina

32 Charleston, SC 29425

33 E-mail: neelon@musc.edu

34 Telephone: (843) 876-1149

35

36 Word Count: 1200

37

38 **Conflicts of Interest:** Dr. Mueller was supported by the National Heart, Lung, And Blood

39 Institute of the National Institutes of Health under Award Number K01HL141589 (PI: Mueller).

40 The funder had no influence on the study's design, implementation, or findings.

41

42 **Financial Disclosure:** No financial disclosures were reported by the authors of this manuscript.

43 **Abstract**

44 **Introduction**

45 As the response to the COVID-19 pandemic has become increasingly politicized in the United
46 States (US), political party affiliation of state leaders may contribute to policies affecting the
47 spread of the disease. We examined differences in COVID-19 infection and death rates stratified
48 by governor party affiliation across the 50 US states and the District of Columbia (DC).

49

50 **Methods**

51 We conducted a longitudinal analysis examining daily COVID-19 incidence and death rates from
52 March 1 to September 30, 2020, for each US state and DC. We fit a Bayesian negative binomial
53 model to estimate adjusted daily risk ratios (RRs) and posterior intervals (PIs) comparing
54 infection and death rates by gubernatorial (mayoral for DC) party affiliation. We adjusted for
55 several state-level variables, including population density, age, race, poverty, and health.

56

57 **Results**

58 From March to early June 2020, Republican-led states had, on average, lower COVID-19
59 incidence rates compared to Democratic-led states. However, on June 8, the association
60 reversed, and Republican-led states had higher per capita COVID-19 incidence rates (RR=1.15,
61 95% PI: 1.02, 1.25). This trend persisted until September 30 (RR=1.26, 95% PI: 0.96, 1.51).
62 For death rates, Republican-led states had lower average rates early in the pandemic, but higher
63 rates from July 13 (RR=1.22, 95% PI: 1.03,1.37) to September 30 (RR=1.74, 95% PI: 1.20,
64 2.24).

65

66 **Conclusion**

67 Gubernatorial party affiliation may drive policy decisions that impact COVID-19 infections and
68 deaths across the US. As attitudes toward the pandemic become increasingly polarized, policy
69 decisions should be guided by public health considerations rather than political ideology.

70

71 **Introduction**

72 Coronavirus disease 2019 (COVID-19) has resulted in a global public health crisis. As of
73 October 3, 2020, there have been over 7 million confirmed COVID-19 cases and over 2 million
74 related deaths in the US.¹ In response to the pandemic, the governors of all 50 states declared
75 states of emergency. Shortly thereafter, states began enacting policies to help stop the spread of
76 the virus. However, these policies vary and are guided, in part, by decisions from state
77 governors.

78
79 Under the 10th Amendment to the US Constitution, which gives states all powers not specifically
80 apportioned to the federal government, state governors have the authority to take action in public
81 health emergencies. For example, earlier this year, nearly all state governors issued stay-at-home
82 executive orders that advised or required residents to shelter in place.² Two recent studies found
83 that Republican governors, however, were slower to adopt stay-at-home orders, if they did so at
84 all.^{3,4} Moreover, another study found that Democratic governors had longer durations of stay-at-
85 home orders.⁵ Further, researchers identified governor Democratic political party affiliation as
86 the most important predictor of state mandates to wear face masks.⁶

87
88 Although recent studies have examined individual state policies, such as mandates to socially
89 distance, wear masks, and close schools and parks,^{3,4,6-8} multiple policies may act in unison to
90 impact the spread of COVID-19. Additionally, the pandemic response has become increasingly
91 politicized.^{7,9,10} As such, political affiliation of state leaders, and specifically governors, might
92 best capture the omnibus impact of state policies. Therefore, the purpose of this study was to

93 examine differences in incidence and death rate trends over time, stratified by governors'
94 political affiliation among the 50 states and DC.

95

96 **Methods**

97 We conducted a longitudinal analysis examining COVID-19 incidence and death rates from
98 March 1 to September 30, 2020 for the 50 states and DC. Based on prior research,^{3,4,6,7} we
99 hypothesized that states with Republican governors would have lower incidence and death rates
100 early in the pandemic as many Democratic governors preside over international hubs that served
101 as points of entry for the virus in early 2020.^{11,12} We also hypothesized that Republican-led
102 states would have higher rates in later months, potentially reflecting policy differences that break
103 along party lines. The Institutional Review Boards at the Medical University of South Carolina
104 and Johns Hopkins Bloomberg School of Public Health deemed this research exempt.

105

106 We documented governor party affiliation for each US state; for DC, we used mayoral
107 affiliation. We obtained daily COVID-19 incident case and death data from USAFacts,¹³ a well-
108 validated source of COVID-19 tracking information, for each county in the US.^{14,15} We
109 aggregated county data to obtain state-level data. We then adjusted for potential confounders
110 chosen *a priori* from the US Census Bureau and the Robert Wood Johnson Foundation.¹⁶⁻¹⁸
111 These included state population size to compute population density, the percentage of state
112 residents aged 65 and older, the percentage of Black and Hispanic residents, the percentage
113 below the federal poverty line, the percentage in poor or fair health, and the number of primary
114 care physicians per 100,000 residents.

115

116 **Statistical analysis**

117 We fit Bayesian negative binomial models with daily incident cases and deaths for each state as
118 the outcomes. The models included penalized cubic Bsplines for both the fixed and random
119 (state-specific) temporal effects. We included state population as an offset on the log scale. We
120 assigned ridge priors to the spline coefficients.¹⁹ We standardized adjustment variables and
121 assigned diffuse normal priors to their coefficients. We assigned a gamma prior to the dispersion
122 parameter. For posterior computation, we developed an efficient Gibbs sampler^{20,21} and ran the
123 algorithm for 50,000 iterations with a burn-in 10,000 to ensure convergence. Sensitivity
124 analyses demonstrated the model's robustness to prior specification.

125

126 We stratified states by governors' affiliation and graphed the posterior mean incidence and death
127 rates daily for the reference covariate group, as well as the 95% posterior intervals (PIs). We
128 reported adjusted risk ratios (RRs) and 95% PIs comparing states, with RRs > 1.00 indicating
129 higher rates among Republican-led states. We conducted analyses using R software version 3.6
130 (R Core Team, 2019).

131

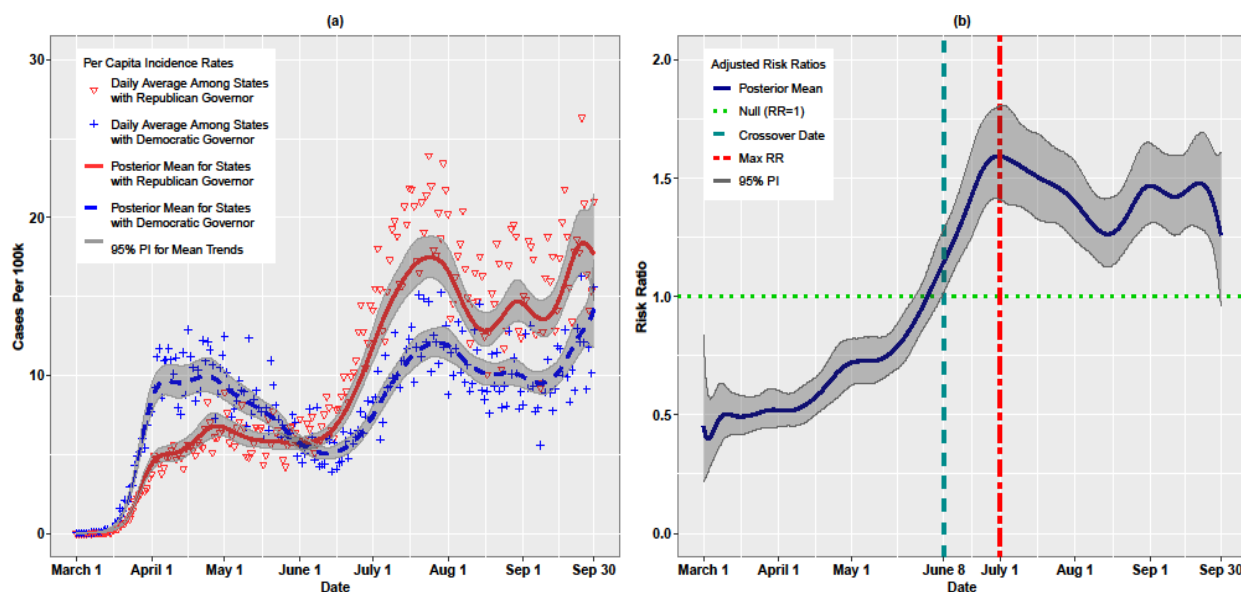
132 **Results**

133 The final sample comprised 10,914 observations (51 states x 214 study days) with 26
134 Republican-led and 25 Democratic-led states. Figures 1(a) and 1(b) present incidence trends (in
135 cases per 100,000) and adjusted RRs by gubernatorial affiliation. Republican-led states had
136 lower rates from March to early June 2020. However, on June 8, the association reversed
137 (RR=1.15, 95% PI: 1.02, 1.25), indicating that Republican-led states had on average 1.15 times
138 more cases per 100,000 than Democratic-led states. The RRs increased steadily thereafter,

139 achieving a maximum of 1.59 (95% PI: 1.42, 1.73) on July 1. The trends leveled but remained
140 positive through September 29 (RR=1.31, 95% PI: 1.06, 1.52). However, on September 30, risk
141 ratio overlapped the null (RR=1.26, 95% PI: 0.96, 1.51).

142

143 **Figure 1.** (a) Per capita COVID-19 incidence rates by governor affiliation; (b) adjusted risk
144 ratios (RRs) and 95% posterior intervals (PIs)



145

146

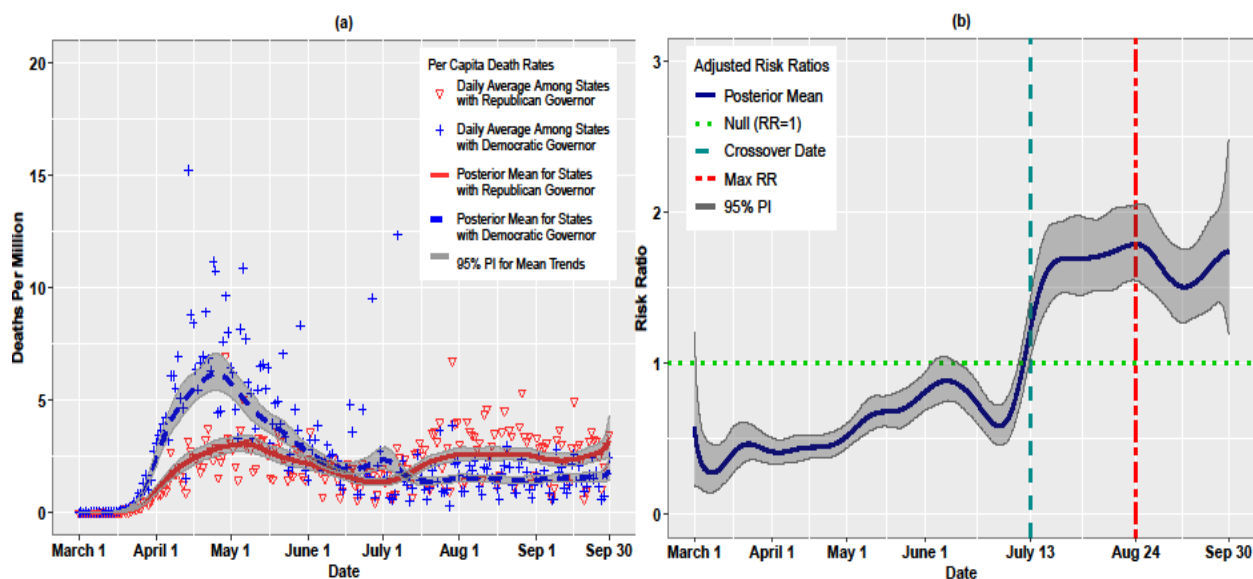
147 We observed a similar pattern for the death trends shown in Figures 2(a) and 2(b). Republican-
148 led states had lower death rates (per million) early in the pandemic, but the trend reversed on
149 July 13 (RR=1.22, 95% PI: 1.03,1.37). The estimated RRs increased sharply through July 25
150 (RR=1.69, 95% PI: 1.46, 1.87) and hovered between 1.50 and 2.00 through September 30
151 (RR=1.74, 95% PI: 1.20, 2.24).

152

153

154

155 **Figure 2.** (a) Per capita COVID-19 death rates by governor affiliation; (b) adjusted risk ratios
156 (RRs) and posterior intervals (PIs)



157

158

159 Discussion

160 In this longitudinal analysis, we found that Republican-led states had fewer per capita COVID-
161 19 cases and deaths early in the pandemic, but these trends reversed in early June (for cases) and
162 in July (for deaths). These early trends could be explained by high COVID-19 rates among
163 Democratic-led states that are home to initial ports of entry for the virus in early 2020.^{11,12}
164 However, the subsequent reversal in trends to Republican-led states may reflect policy
165 differences that could have facilitated the spread of the virus.^{3,4,6-9}

166

167 For instance, Adolph et al. found that Republican governors were slower to adopt both stay-at-
168 home orders and mandates to wear face masks.^{3,6} Other studies have shown that Democratic
169 governors were more likely to issue stay-at-home orders with longer durations.^{4,5} Moreover,
170 decisions by Republican governors in spring 2020 to retract policies, such as the lifting of stay-

171 at-home orders on April 28 in Georgia,²² may have contributed to increased cases and deaths.
172 Thus, governors' political affiliation might function as an upstream progenitor of multifaceted
173 policies that, in unison, impact the spread of the virus. Although there were notable exceptions
174 among Republican governors in states such as Maryland, Ohio, and Massachusetts, Republican
175 governors were by and large less likely than their Democratic counterparts to enact policies
176 aligned with public health social distancing recommendations.³

177
178 There are, however, limitations to this study. We conducted a population-level rather than
179 individual-level analysis. Although we controlled for potential confounders (e.g., population
180 density), the findings could reflect the virus's spread from urban to rural areas.^{11,12} Additionally,
181 as with any observational study, we cannot infer causality. Finally, governors are not the only
182 authoritative actor in a state. Future research could explore associations between party affiliation
183 of state or local legislatures, particularly when these differ from governors.

184
185 Our findings suggest that governor political party affiliation may differentially impact COVID-
186 19 incidence and death rates. As attitudes toward the pandemic become increasingly
187 polarized,^{7,9,10} policy decisions should be guided by public health considerations rather than
188 political expedience,²³ as the latter may lead to increases COVID-19 cases and deaths.

189
190 **Acknowledgments**

191 Dr. Neelon is a part-time employee of the Department of Veterans Affairs. The content of this
192 article does not represent the views of the Department of Veterans Affairs or the U.S.
193 government. The article represents the views of the authors and not those of the VA or Health

194 Services Research and Development. Dr. Mueller was supported by the National Heart, Lung,
195 And Blood Institute of the National Institutes of Health under Award Number K01HL141589
196 (PI: Mueller). The funder had no influence on the study design, implementation, or findings. Dr.
197 Neelon had full access to all data in the study and takes responsibility for the integrity of the data
198 and the accuracy of the data analysis. Dr. Neelon, Dr. Mueller, Dr. Pearce and Dr. Benjamin-
199 Neelon contributed to the concept and design of the study. Dr. Neelon and Mr. Mutiso
200 contributed to acquisition, analysis, and interpretation of the data. Dr. Neelon and Benjamin-
201 Neelon drafted the manuscript, and all Dr. Mueller, Dr. Pearce, and Mr. Mutiso provided critical
202 revisions. No financial disclosures were reported by the authors of this manuscript.
203

204 **References**

- 205 1. CDC COVID Data Tracker: United States Laboratory Testing.
206 <https://www.cdc.gov/covid-data-tracker/index.html#testing>. Published 2020. Accessed
207 September 1, 2020.
- 208 2. Gostin LO, Wiley LF. Governmental Public Health Powers During the COVID-19
209 Pandemic: Stay-at-home Orders, Business Closures, and Travel Restrictions. *Jama*. 2020.
- 210 3. Adolph C, Amano K, Bang-Jensen B, Fullman N, Wilkerson J. Pandemic Politics:
211 Timing State-Level Social Distancing Responses to COVID-19. *Journal of Health*
212 *Politics, Policy and Law*. 2020.
- 213 4. Baccini LB, A. Explaining governors' response to the COVID-19 pandemic in the United
214 States. *IZA Discussion Paper No 13137*. 20202.
- 215 5. Kosnik LR, Bellas A. Drivers of COVID-19 Stay at Home Orders: Epidemiologic,
216 Economic, or Political Concerns? *Econ Disaster Clim Chang*. 2020:1-12.
- 217 6. Adolph C, Amano K, Bang-Jensen B, et al. Governor partisanship explains the adoption
218 of statewide mandates to wear face coverings. *medRxiv*. 2020:2020.2008.2031.20185371.
- 219 7. Grossman G, Kim S, Rexer JM, Thirumurthy H. Political partisanship influences
220 behavioral responses to governors' recommendations for COVID-19 prevention in the
221 United States. *Proceedings of the National Academy of Sciences of the United States of*
222 *America*. 2020;117(39):24144-24153.
- 223 8. Matzinger P, Skinner J. Strong impact of closing schools, closing bars and wearing masks
224 during the Covid-19 pandemic: results from a simple and revealing analysis. *medRxiv*.
225 2020:2020.2009.2026.20202457.
- 226 9. Christensen SR, Pilling EB, Eyring JB, Dickerson G, Sloan CD, Magnusson BM.
227 Political and personal reactions to COVID-19 during initial weeks of social distancing in
228 the United States. *PloS one*. 2020;15(9):e0239693.
- 229 10. Jiang J, Chen E, Lerman K, Ferrara E. Political Polarization Drives Online Conversations
230 About COVID-19 in the United States. *Hum Behav Emerg Technol*. 2020.
- 231 11. Paul R, Arif AA, Adeyemi O, Ghosh S, Han D. Progression of COVID-19 From Urban to
232 Rural Areas in the United States: A Spatiotemporal Analysis of Prevalence Rates. *J Rural*
233 *Health*. 2020;36(4):591-601.
- 234 12. Wang Y, Liu Y, Struthers J, Lian M. Spatiotemporal Characteristics of COVID-19
235 Epidemic in the United States. *Clin Infect Dis*. 2020.
- 236 13. USAFacts. US Coronavirus Cases and Deaths.
237 <https://usafacts.org/visualizations/coronavirus-covid-19-spread-map/>. Published 2020.
238 Accessed September 1, 2020.
- 239 14. Wang G, Gu Z, Li X, et al. Comparing and Integrating US COVID-19 Data from
240 Multiple Sources with Anomaly Detection and Repairing. 2020.
- 241 15. Smith JP. Comparison of COVID-19 case and death counts in the United States reported
242 by four online trackers: January 22-May 31, 2020. *medRxiv*.
243 2020:2020.2006.2020.20135764.
- 244 16. Bureau USC. County Population Totals: 2010-2019.
245 <https://www.census.gov/data/tables/time-series/demo/popest/2010s-counties-total.html>.
246 Published 2019. Accessed September 1, 2020.

- 247 17. Foundation RWJ. County Health Rankings & Roadmaps: Rankings Data &
248 Documentation. [https://www.countyhealthrankings.org/explore-health-rankings/rankings-
250 data-documentation](https://www.countyhealthrankings.org/explore-health-rankings/rankings-
249 data-documentation). Published 2020. Accessed August 8, 2020.
- 251 18. Centers for Disease Control and Prevention/Agency for Toxic Substances and Disease
252 Registry/ Geospatial Research A, and Services Program. Social Vulnerability Index 2018
253 Database US. <https://svi.cdc.gov/data-and-tools-download.html>. Published 2018.
254 Accessed September 30, 2020.
- 255 19. Kneib T, Konrath S, Fahrmeir L. High dimensional structured additive regression
256 models: Bayesian regularization, smoothing and predictive performance. *Journal of the
257 Royal Statistical Society: Series C (Applied Statistics)*. 2011;60(1):51-70.
- 258 20. Pillow JWS, J. Fully Bayesian inference for neural models with negative-binomial
259 spiking. 2012:1898--1906.
- 260 21. Dadaneh SZ, Zhou M, Qian X. Bayesian negative binomial regression for differential
261 expression with confounding factors. *Bioinformatics*. 2018;34(19):3349-3356.
- 262 22. Each State's COVID-19 Reopening and Reclosing Plans and Mask Requirements
263 <https://www.nashp.org/governors-prioritize-health-for-all/>. Published 2020. Accessed
264 September 30, 2020, 2020.
- 265 23. Guest JL, Del Rio C, Sanchez T. The Three Steps Needed to End the COVID-19
266 Pandemic: Bold Public Health Leadership, Rapid Innovations, and Courageous Political
267 Will. *JMIR Public Health Surveill*. 2020;6(2):e19043.

268