

## Hearing loss is associated with gray matter differences in older adults at risk for and with Alzheimer's disease

Giroud, N. <sup>1,2\*</sup>, Pichora-Fuller, M. K. <sup>3</sup>, Mick P. <sup>4</sup>, Wittich, W. <sup>5</sup>, Al-Yawer, F. <sup>1</sup>, Rehan, S. <sup>1</sup>, Orange, J.B., & Phillips, N. A. <sup>1,2,7</sup>

<sup>1</sup> *Department of Psychology, Centre for Research in Human Development, Concordia University, Montréal, Québec, Canada*

<sup>2</sup> *Centre for Research on Brain, Language, and Music, Montréal, Québec, Canada*

<sup>3</sup> *Department of Psychology, University of Toronto, Mississauga, Ontario, Canada*

<sup>4</sup> *Department of Surgery, College of Medicine, University of Saskatchewan, Saskatoon, Saskatchewan, Canada*

<sup>5</sup> *School of Optometry, Université de Montréal, Montreal, Quebec, Canada*

<sup>6</sup> *School of Communication Sciences and Disorders, Western University, London, Canada*

<sup>7</sup> *Lady Davis Institute for Medical Research, Jewish General Hospital, Montréal, Québec, Canada*

Contact information authors:

First author: Nathalie Giroud: [nathalie.giroud@uzh.ch](mailto:nathalie.giroud@uzh.ch)

Senior author: Natalie A. Phillips: [natalie.phillips@concordia.ca](mailto:natalie.phillips@concordia.ca)

### **\*Corresponding author**

Dr. Natalie Phillips, Concordia University, Cognition, Aging, and Psychophysiology Laboratory, 7141 Sherbrooke Street West, H4B 1R6 Montreal, Quebec, Canada, Phone: +1 (514) 848-2424 ext. 2218, Email: [natalie.phillips@concordia.ca](mailto:natalie.phillips@concordia.ca)

**Date:** October 6th, 2020

**Total word count:** 14'373

**NOTE:** This preprint reports new research that has not been certified by peer review and should not be used to guide clinical practice.

1 **Abstract**

2  
3 Hearing loss in healthy older adults is associated with accelerated brain volume loss; however, little is  
4 known about this association in those with or at risk for dementia. Using data from the COMPASS-  
5 ND study we investigated associations between hearing loss and hippocampal volume as well as  
6 cortical thickness in older adults with subjective cognitive decline (SCD, N=35), mild cognitive  
7 impairment (MCI, N=79), and Alzheimer’s dementia (AD, N=21). SCD participants with greater pure-  
8 tone hearing loss exhibited lower hippocampal volume, a biomarker of dementia. They also showed  
9 more cortical thickness in the left superior temporal gyrus and right pars opercularis, suggesting  
10 compensatory cortical changes. No significant associations were found in those with cognitive  
11 impairment (MCI or AD) who had greater brain atrophy, suggesting that dementia-related  
12 neuropathology may supercede any effects of pure-tone hearing loss on brain volume loss. In contrast,  
13 greater speech-in-noise reception thresholds were associated with lower cortical thickness bilaterally  
14 across much of the cortex in AD. The AD group also showed worse speech-in-noise thresholds  
15 compared to the SCD group, suggesting that strong brain atrophy driven by dementia-related  
16 neuropathology in AD is associated with hearing problems in noisy environments.  
17  
18  
19

20 **Words:** 188

21 **Key Words:** subjective cognitive decline, mild cognitive impairment, Alzheimer’s dementia, brain  
22 structure, hearing loss, CLSA  
23

24 **Highlights**

25

26 • In older adults with subjective cognitive complaints, greater pure-tone hearing loss was  
27 associated with lower hippocampal volume.

28 • Pure-tone hearing loss was not associated with brain atrophy in older adults with cognitive  
29 impairment (i.e., MCI or AD).

30 • Older adults with Alzheimer’s dementia exhibited higher speech-in-noise thresholds than older  
31 adults without cognitive impairment.

32 • In older adults with Alzheimer’s dementia, greater brain atrophy across large portions of the  
33 cortex was associated with greater speech-in-noise thresholds.

34

## 35 1. Introduction

36 The global prevalence of Alzheimer's dementia (AD) is expected to triple by 2050, leading to  
37 immense personal, social, and health care costs<sup>1</sup>. Attention is now focused on behavioral and non-  
38 pharmacological interventions because of the low efficacy of pharmacological treatments (Livingston  
39 et al., 2017, 2020). Identifying and treating modifiable risk factors is being adopted as a strategy to  
40 delay the onset or progression of AD (Livingston et al., 2017, 2020). Indeed, it is estimated that  
41 delaying the onset of dementia by 5 years would lead to an approximate 50% reduction in prevalence  
42 after 10 years (Brookmeyer et al., 1998). In a meta-analysis by Livingston et al. (2017) examining risk  
43 factors for dementia, the population attributable fraction for hearing loss was estimated at 9%, which  
44 was higher than the value for all other modifiable risk factors in the study. In other words,  
45 hypothetically eliminating hearing loss from the population could lead to a 9% decline in the  
46 prevalence of AD, assuming a causal relationship. Currently, there is insufficient evidence regarding  
47 whether or not prevention of or treatments for hearing loss can modify dementia risk, but this is an  
48 active topic of research (Deal et al., 2018; Sanchez et al., in press).

49 Hearing loss is a chronic health issue among older adults and is considered to be one of the top three  
50 leading causes of disability in old age (Ciorba et al., 2012; Mathers et al., 2008). Typically, age-related  
51 hearing loss is characterized by elevated pure-tone audiometric thresholds for high-frequency sounds  
52 (International Organization for Standardization (ISO), 2017). Age-related hearing loss is  
53 multifactorial, with increased audiometric thresholds at high-frequencies often resulting from damage  
54 to cochlear outer hair cells or the stria vascularis in the auditory periphery (Dubno et al., 2013; Mills et  
55 al., 2006). In addition, there is evidence that degeneration in the synaptic connections between  
56 cochlear hair cells and nerve fibers may contribute to inaccurate coding of acoustic signals, leading to  
57 difficulties with speech understanding (Liberman & Kujawa, 2017). Notably, even older adults with  
58 normal or near-normal audiometric pure-tone thresholds can have difficulties understanding speech in  
59 noise in everyday situations because of age-related declines in auditory processing (Pichora-Fuller et  
60 al., 2017). In general, age-related hearing loss leads to difficulty participating in conversations and  
61 social interactions and is associated with reduced quality of life, social isolation, and higher rates of  
62 depressive symptoms (Arlinger, 2003; Ciorba et al., 2012; Pichora-Fuller et al., 2015; Vannson et al.,  
63 2015). Older adults often remark that they can hear but cannot discriminate or easily understand what  
64 is said in noisy environments.

65 There is a strong link between auditory and cognitive functioning (e.g. Lindenberger & Baltes, 1994).  
66 Hearing loss (defined by pure-tone thresholds or measures of auditory processing such as speech-in-  
67 noise or word recognition tests) is related to self-reported (Curhan et al., 2019) and behavioral  
68 measures of cognitive decline in aging (de la Fuente et al., 2019; Fischer et al., 2016; Fortunato et al.,  
69 2016; Merten et al., 2019). Hearing loss also is linked to incident all-cause dementia (Albers et al.,

---

<sup>1</sup> [https://www.who.int/mental\\_health/neurology/dementia/guidelines\\_risk\\_reduction/en/](https://www.who.int/mental_health/neurology/dementia/guidelines_risk_reduction/en/)

70 2015; Deal et al., 2015, 2019; Gates et al., 2011; Lin, Metter, et al., 2011; Lin & Albert, 2014; Osler et  
71 al., 2019). However, despite growing evidence for a link between auditory and cognitive decline, the  
72 underlying mechanisms are still unclear. Several hypotheses were proposed over 25 years ago to  
73 explain the relationship between hearing and cognitive decline (Lindenberger & Baltes, 1994 and  
74 versions of these hypotheses continue to motivate research); however, no single hypothesis can  
75 explain most of the effects reported in the literature (Pronk et al., 2019). Consistent with the common-  
76 cause hypothesis, associations between hearing and cognitive decline may be based on a common  
77 biological cause such as widespread age-related neural decline (Li & Lindenberger, 2002). According  
78 to the information degradation hypothesis, it is possible that older adults do not encode auditory  
79 information as well as those with normal hearing. When it is difficult to hear, such as in noisy  
80 environments, the listener may increase the allocation of cognitive resources to lower-level perceptual  
81 auditory processing, thereby diverting resources from higher-order cognitive processing and resulting  
82 in poorer cognitive performance on measures of memory for example (McCoy et al., 2005). In  
83 addition, according to the deprivation hypothesis, chronic reallocation of cognitive resources may  
84 bring about permanent changes in patterns of brain activation (Pelle & Wingfield, 2016).

85 In addition to the auditory-cognitive link, an association between hearing loss and brain atrophy in  
86 gray and white matter has been reported. Greater hearing loss is significantly correlated with lower  
87 gray matter volume in brain regions associated with auditory perception (e.g., superior temporal lobe)  
88 as well as with cognition (e.g., hippocampus, parahippocampus) (Alfandari et al., 2018; Armstrong et  
89 al., 2019; Eckert et al., 2012; Ren et al., 2018; Rigters et al., 2018, 2017; Rudner et al., 2019; Tuwaig  
90 et al., 2017; Uchida et al., 2018; but see Profant et al., 2014). Moreover, longitudinal studies  
91 demonstrate that greater hearing loss is related to greater gray matter volume loss (Lin et al., 2014; Xu  
92 et al., 2019) and lateral ventricle expansion (Eckert et al., 2019) with aging. These findings are  
93 consistent with the sensory deprivation hypothesis, such that less and/or degraded sensory input into  
94 the brain may lead to long-term deprivation effects on the auditory pathways causing structural decline  
95 as well as neurofunctional changes (Lin et al., 2014; Pelle & Wingfield, 2016). For example, Lin et  
96 al. (2014) showed that cognitively normal older adults with greater hearing loss compared to those  
97 with normal hearing exhibit accelerated volume loss in several regions of the temporal lobe (i.e., right  
98 superior, middle, and inferior temporal gyri and the parahippocampus) that are important for auditory  
99 processing, semantic memory functioning, and cognitive processing. The associations between hearing  
100 loss and brain atrophy provide evidence for the sensory deprivation hypothesis because they suggest  
101 that long-term hearing loss is associated with structural loss in the brain.

102 Previous studies of the associations between hearing loss and brain atrophy have examined mainly  
103 healthy older adults with no clinically significant cognitive impairment. Studies of those who are  
104 particularly at risk for developing AD, as well as in those who have already been diagnosed with AD,  
105 could reveal whether hearing loss is independently associated with brain atrophy in those who  
106 typically have more vulnerable brains because of their neuropathology-related atrophy. AD

107 neuropathology typically causes accelerated gray and white matter declines which are also core  
108 biomarkers of AD (for a review see Pini et al., 2016). Furthermore, individual differences in cognitive  
109 performance correlate with brain structural measures in those with subjective cognitive decline (SCD)  
110 and mild cognitive impairment (MCI). For example, lower memory performance in a face-name recall  
111 test, which is sensitive to early stages of AD, correlated with smaller right hippocampal volume in  
112 SCD and MCI (Caillaud et al., 2019). SCD refers to those who have subjective complaints about their  
113 cognitive capacities, but who perform within normal limits on behavioral neuropsychological tests  
114 (Jessen et al., 2010, 2014). MCI refers to those who show clinically significant impairment in one or  
115 more cognitive domains, while their functional abilities in everyday life are judged to be intact  
116 (Chertkow et al., 2019, see section 2.1. for details about diagnostic criteria). There is longitudinal  
117 evidence that SCD is a risk factor for cognitive decline as well as for AD and occurs at the preclinical  
118 stage of AD and other dementias (Dufouil et al., 2005; Glodzik-Sobanska et al., 2007; Jessen et al.,  
119 2010; Reisberg et al., 2010; van Oijen et al., 2007). Similarly, MCI is a strong risk factor for AD and  
120 describes an intermediate stage between normal cognitive aging or preclinical AD and AD, although  
121 not all persons with MCI convert to AD with reported rates between 20-40% (Albert et al., 2011;  
122 Roberts & Knopman, 2013).

123 The extent to which hearing loss is independently associated with (sub)cortical gray matter loss in  
124 those with varying degrees of cognitive impairment and neuropathology has yet to be examined. There  
125 is little evidence that pathological features of AD, such as amyloid plaques or neurofibrillary tangles,  
126 are observed in the cochlea (Sinha et al., 1993; Wang & Wu, 2015, but see Omata et al., 2016). Thus,  
127 an independent association between hearing loss and brain atrophy in those at risk for or with AD  
128 would be evidence for the sensory deprivation hypothesis in these individuals.

129 In the current study, we analyzed data from the first wave of data released from the COMPASS-ND  
130 (Comprehensive Assessment of Neurodegeneration and Dementia) study (Chertkow et al., 2019). The  
131 COMPASS-ND sample includes participants with varying types and degrees of cognitive impairment  
132 (for more information about COMPASS-ND see: <http://ccna-ccnv.ca/compass-nd-study/>). We  
133 examined the extent to which hearing loss is related to gray matter atrophy in the hippocampus as well  
134 as in FreeSurfer-based whole-brain analysis on cortical thickness in those with SCD, MCI, and AD.  
135 We hypothesized that greater higher pure-tone thresholds and/or higher speech-in-noise thresholds  
136 would be associated with lower cortical thickness in all three groups. Specifically, we expected pure-  
137 tone thresholds to be negatively correlated with cortical thickness of primary and secondary auditory  
138 areas, the hippocampal volume, and possibly the prefrontal cortex (due to reallocation of resources) in  
139 individuals with hearing loss. Furthermore, we hypothesized speech-in-noise reception thresholds to  
140 be negatively associated with cortical thickness of primary and secondary auditory areas, the  
141 prefrontal cortex, and temporo-parietal areas involved in speech processing. Such associations would  
142 be evidence for the sensory deprivation hypothesis in those with or at high risk for developing  
143 dementia.

144 **2. Material and Methods**

145 **2.1. Participants**

146 Of the first and second wave of the COMPASS-ND data released in November 2018 and May 2019  
 147 respectively, we analyzed the data from individuals who met the criteria for SCD (N=35), MCI  
 148 (N=85), or AD (N=25). Of those 145 participants, 10 were excluded because they did not have MRI  
 149 data (3 MCI, 1 AD), did not have hearing data (1 MCI), or were outliers (+3 standard deviations (SD)  
 150 above average) in cortical volume (2 MCI, 3 AD) skewing most of the correlations. This led to a final  
 151 total of 135 included participants (N=35 SCD; N=79 MCI; N=21 AD). Table 1 provides an overview  
 152 of the demographic and health variables for each group, as well as information about participants'  
 153 vision. We found significant group differences in age, sex, as well as a group difference in education  
 154 approaching significance ( $p=.1$ ); thus, we included these variables as covariates in all analyses.

155  
 156 *Table 1:*  
 157 Summary statistics on demographic, vision, and health variables for COMPASS-ND participants as a  
 158 function of diagnostic groups.

	SCD (N=35)		MCI (N=79)		AD (N=21)		F	p	Post-hoc
	N		N		N				
Female	20 (57 %)		29 (37%)		1 (5%)		8.48	<.001	SCD,MCI>AD
Hearing aid users	2 (6%)		13 (17%)		4 (19%)		1.48	.23	-
Right handedness	32 (91%)		76 (96%)		19 (91%)		1.41	.25	-
	M	SD	M	SD	M	SD			
Age, years	69.45	6.18	73.47	6.57	75.87	7.24	7.24	.001	SCD<MCI,AD
Education, years	16.79	3.19	15.52	3.07	15.31	2.96	2.36	.10	-
MoCA score	27.23	1.94	24.06	3.06	19.38	3.04	51.21	<.001	SCD>MCI>AD
Smoking (0=no, 1=yes)	.51	.51	.47	.50	.57	.51	.33	.72	-
Hypertension (0=no, 1=yes)	.23	.43	.35	.48	.33	.48	.89	.41	-
Contrast sensitivity (CS)* in log CS units**	1.70	.15	1.67	.15	1.48	.17	12.62	<.001	SCD,MCI>AD
Reading Acuity in logMAR units***	.28	.27	.30	.29	.20	.21	1.26	.29	-

SCD=subjective cognitive decline, MCI=mild cognitive impairment, and AD=Alzheimer's dementia groups.

\*most of the study participants had normal CS (SCI: 87.5%, MCI: 93%, AD: 50%), while few had moderately impaired CS (SCI: 12.5%, MCI: 7%, AD: 50%); however, these levels of impairment are unlikely to interfere with test administration of visual stimuli

\*\* < 1 log CS = severe impairment, 1-1.5 log CS = moderate impairment, > 1.5 log CS = normal for age 60+

\*\*\* logMAR = logarithm of the minimum angle of resolution; logMAR < .30 (equivalent of better than 20/40) = normal acuity. logMAR .30 to .50 (20/40 to 20/60) = moderate visual impairment

160 General COMPASS-ND inclusion criteria included: being between 50-90 years of age, having a study  
161 partner who sees the participant weekly and who can participate as required by the protocol, passing  
162 the safety requirements for the MRI scanning, and possessing sufficient proficiency in English or  
163 French (as judged by the examiner) to undertake self-report and neuropsychological testing. Exclusion  
164 criteria were as follows: presence of significant known chronic brain disease unrelated to AD, on-  
165 going alcohol or drug abuse which, in the opinion of the investigator, may have interfered with the  
166 person's ability to comply with the study procedures, severely cognitively impaired individuals with a  
167 score of  $\leq 13/30$  on the Montréal Cognitive Assessment (MoCA) (Nasreddine et al., 2005) or a  
168 symptomatic stroke within the previous year. Written informed consent was obtained from all  
169 participants. The COMPASS-ND study was approved by the Jewish General Hospital Research Ethics  
170 Board.

## 171 **2.2. Criteria for SCD participants**

172 One core criterion for SCD is a self-experienced persistent decline in cognitive capacities in  
173 comparison to previous normal status, which is unrelated to an acute event. This criterion was  
174 operationalized by two questions 1) "Do you feel like your memory or thinking is becoming worse?"  
175 and, if so, 2) "Does this concern you?". Only individuals who answered the two questions with "yes"  
176 were assigned to the SCD group (following Jessen et al., 2014). Further inclusion criteria for SCD  
177 were normal age- and education-adjusted performance on standardized cognitive tests (Chertkow et  
178 al., 2019) including a) a score of  $\geq 26/30$  on the MoCA (Nasreddine et al., 2005), b) a word list recall  
179 score of  $> 5$  on the Consortium to Establish a Registry for Alzheimer's Disease (CERAD), c) 2 above  
180 ADNI education-adjusted cut-offs on the WMS-III Logical Memory test the Logical Memory Subtest  
181 of the Wechsler Memory Scale-3<sup>rd</sup> ed. (WMS-III) (Tulsky et al., 2003), and d) no symptoms (i.e., a  
182 zero) in the Clinical Dementia Rating (CDR) (Hughes et al., 1982).

## 183 **2.3. Criteria for MCI participants**

184 Participants and/or informants who reported a concern regarding a change in the participant's  
185 cognition were included in the MCI group if they also met at least one of the following four criteria  
186 representing impairment in one or more cognitive domains (Albert et al., 2011): a) WMS-III Logical  
187 Memory score  $<$  ADNI education-adjusted cut-offs, b) CERAD word list recall  $< 6$ , c) MoCA score  
188 13-24/30, d) assigned a CDR of  $\leq 0.5$  and determined to be able to follow daily life routines  
189 independently (Chertkow et al., 2019).

## 190 **2.4. Criteria for AD participants**

191 Participants who were diagnosed with AD were selected based on the following criteria (following  
192 McKhann et al., 2011): a) A gradual progressive change in memory and/or other cognitive functions  
193 over more than six months based on the participant's and/or informant's report; b) Objective evidence  
194 of a significant decline in at least two domains of cognition (i.e., episodic memory, reasoning, problem



195 solving, visuospatial abilities, language, personality/behavior) as defined by fulfilling at least two of  
196 the following criteria: Logical Memory score below ADNI cutoffs, CERAD word list recall < 7,  
197 MoCA score 13-24/30 (with at least one point lost in a non-memory task), or positive response to the  
198 question: “Has the participant had any changes in personality or behaviour?”; c) The presence of  
199 impairment in functional abilities was operationalized by a positive response to the statement, “The  
200 cognitive deficits interfere with independence in everyday activities such as paying bills or managing  
201 medications” (Chertkow et al., 2019).

## 202 **2.5. Hearing loss**

### 203 **2.5.1. Pure-tone audiometry**

204 Pure-tone audiometry was assessed in an abbreviated screening protocol using a GSI 18 audiometer in  
205 a quiet clinical examination room at each site. The screening protocol assessed if participants were  
206 able to detect at least one of two pure tones presented in each ear at each of 3 pre-selected frequencies  
207 at fixed dB HL levels. First, there were two trials where a 2-kHz pure tone was presented at 40 dB HL.  
208 If the participant successfully detected that, then 2 kHz, 1 kHz, and 4 kHz were tested with two trials  
209 each at 25 dB HL. Participants who failed to hear a 2 kHz pure tone at 40 dB HL were provided with a  
210 pocket talker assistive listening device throughout the neuropsychological and clinical assessment if  
211 they did not have their own hearing aid.

212 For the present analyses, participants were assigned to one of six hearing loss categories based on their  
213 ability to detect at least one of the two 2-kHz pure tones as described in Table 2<sup>2</sup>. In order to validate  
214 these categories, based on the detection of 2-kHz at 25 and 40 dB HL, we applied the same  
215 classification method to two large databases in which participants had comprehensive audiometric  
216 thresholds measured using standard procedures. First, we applied it to a community-based sample of  
217 healthy Canadians who were participants in the comprehensive cohort of the Canadian Longitudinal  
218 Study on Aging (CLSA) (Raina et al., 2009), and had undergone a comprehensive bilateral 7-  
219 frequency air-conduction pure-tone audiometry as part of their baseline assessment in the study  
220 (CLSA data release 3.2; see <https://www.clsa-elcv.ca/doc/529> for CLSA audiometry protocol).  
221 Audiometric data were analyzed for 27,444 of 30,097 members of the comprehensive cohort who had  
222 audiometry data. Table 2 shows the 1000, 2000, and 4000 Hz pure-tone average (PTA) of members of  
223 the CLSA comprehensive cohort based on the COMPASS-ND classification scheme described above.  
224 There was a monotonic worsening in PTA from Category 1 (better hearing) to Category 6 (worse  
225 hearing), confirming that the COMPASS-ND method properly distinguishes people according to their  
226 hearing abilities.

227

---

<sup>2</sup> Based on an ANOVA, there were no differences between males and females in HL category in SCI, MCI, or AD.

228 *Table 2:*  
 229 Validation of the 6-level hearing classification system used in the current study. Table 2 demonstrates  
 230 the pure tone averages (1000, 2000, and 4000 Hz) of participants in the Canadian Longitudinal Study  
 231 on Aging when the classification system was applied to them.

	Hearing loss categorization		PTA for 1, 2, 3, 4 kHz (dB HL)		ASHA grade (dB HL)	
	Better ear	Worse ear	Left	Right	Left	Right
Category 1: 'Normal Hearing' both ears detected tone at 25 dB HL	<=25 dB	<=25 dB	16.4	15.0	Slight (16-25)	Normal (<=15)
Category 2: 'Mild 1' better ear detected tone at 25 dB HL, worse ear at 40 dB HL	<=25 dB	26-40 dB	29.9	31.5	Mild (26-40)	Mild
Category 3: 'Mild 2' both ears detected tone at 40 dB HL	26-40 dB	26-40 dB	39.1	36.7	Mild	Mild
Category 4: 'Moderate 1' better ear detected tone at 25 dB HL, worse ear failed at 40 dB HL	<=25 dB	>40 dB	41.0	45.4	Moderate (41-55)	Moderate
Category 5: 'Moderate 2' better ear detected tone at 40 dB HL, worse ear failed at 40 dB HL	26-40 dB	>40 dB	50.9	50.7	Moderate	Moderate
Category 6: 'Moderate 3' both ears failed to detect tone at 40 dB HL	>40 dB	>40 dB	59.9	57.7	Moderate-severe (56-70)	Moderate- severe

232 PTA= pure-tone average, ASHA = American Speech-Language-Hearing Association.

233  
 234 Second, we used data from the another project (N=242, mean age = 70.67 (SD = 5.94), mean years of  
 235 education = 15.25 (SD = 2.31), 69.4% women), to investigate stigma related to aging and hearing loss  
 236 in Canada, to correlate our hearing loss categorization variable with the PTA of full audiograms (1000,  
 237 2000, 4000 Hz) of the better ear ( $r=.84, p<.001$ ) and the worse ear ( $r=.85, p<.001$ ). Overall, these two  
 238 additional datasets show that our hearing loss categorization based on the more restricted COMPASS-  
 239 ND hearing protocol was valid.

240 For the statistical analyses we treated the six hearing loss categories as scaled data, because Categories  
 241 1-6 reflect the degree of hearing loss.

### 242 2.5.2. Canadian digit triplet test (CDTT)

243 The Canadian Digit Triplet Test (CDTT) was used to assess participants' speech perception abilities in  
 244 an adverse listening condition. The CDTT application was run on a Dell XPS laptop using a USB  
 245 audio card (Creative Sound Blaster X-Fi Go! Pro). The CDTT computes a speech reception threshold  
 246 (SRT) which corresponds to the signal-to-noise ratio at which triplets of digits are recognized 50% of  
 247 the time. Participants were instructed to listen to three digits presented in speech-shaped background

248 noise and to repeat them. The CDTT uses an adaptive 1-up-1-down procedure registering a correct  
249 response if all three digits were repeated correctly by the participant (Ellaham et al., 2016; Giguère et  
250 al., 2020). The standard deviation (SD) of the responses by each participant and the number of her/his  
251 reversals were used to identify erratic runs. Based on this procedure, SRTs from all participants were  
252 shown to be valid with the exception of 2 participants (1 AD, 1 MCI) who had SDs higher than +3  
253 above the mean SD. Their results were coded as missing. Furthermore, the SRT of 1 additional  
254 participant (SCD) was coded as missing because this individual's SRT was higher than +4 dB SNR  
255 which is atypical for persons with mild hearing loss in this sample (this participant was categorized as  
256 "Mild 1" based on our categories for hearing loss)<sup>3</sup>.

## 257 **2.6. MRI data acquisition and analyses**

258 T1-weighted images were obtained from each participant using 3T scanners from different  
259 COMPASS-ND sites across Canada following the Canadian Dementia Imaging Protocol (CDIP)  
260 (Duchesne et al., 2019). The CDIP is a validated, harmonized protocol for MRI data acquisition in  
261 neurodegeneration and is available for GE, Phillips, and Siemens scanners. The parameters for the  
262 acquisition of the 3D T1-weighted images can be found here <https://www.cdip-pcid.ca/>. Parameters  
263 varied depending on the scanner type and version allowing for the images to be as comparable as  
264 possible.

265 First, we compared the degree of global atrophy between diagnostic groups as lower gray matter  
266 volume (i.e., greater atrophy) is often used as a biomarker for Alzheimer's disease. Therefore, cortical  
267 volumes of all lobes were extracted from the T1-weighted images by submitting them to the Civet  
268 pipeline (version 1.1.11; <http://wiki.bic.mni.mcgill.ca/index.php/Civet>) developed at the Montreal  
269 Neurological Institute (MNI) at McGill University for fully automated structural image analysis (Ad-  
270 Dab'bagh et al., 2006; Zijdenbos et al., 2002). Gray matter volumes of left and right frontal, temporal,  
271 occipital, and parietal lobes were extracted.

272 Second, in order to analyze the associations between hearing loss and brain structural measures,  
273 hippocampal volume was extracted and a FreeSurfer analysis performed as described in the following.  
274 Hippocampal volumes were extracted from the T1-weighted images by submitted them to the  
275 ANIMAL (automatic non-linear image matching and anatomical labeling) segmentation method which  
276 is an atlas-based segmentation method that uses non-linear registration to a pre-labeled template  
277 (Collins et al., 1995; Collins & Pruessner, 2010). We then performed a FreeSurfer analysis (version  
278 4.2, <http://freesurfer.net/>) on the T1-weighted images of the same participants. The FreeSurfer pipeline  
279 performs surface-based morphometry (SBM) which involves several processing steps that have been  
280 described in detail in previous publications (Dale et al., 1999; Dale & Sereno, 1993; Fischl et al.,

---

<sup>3</sup> Running an ANOVA, we did not find any differences between males and females in the CDTT thresholds in SCI, MCI, or AD.

281 2001, 2002; Fischl, Salat, et al., 2004; Fischl, Sereno, & Dale, 1999; Fischl, Sereno, Tootell, et al.,  
282 1999; Fischl, Van Der Kouwe, et al., 2004; Fischl & Dale, 2000; Reuter et al., 2010; Ségonne et al.,  
283 2004). The fully automated pipeline was run on CBRAIN (Sherif et al., 2014), a web-based software  
284 for computing intensive analyses that generates individual cortical surface models with high spatial  
285 precision. Five MCI participants were excluded due to errors during preprocessing. All other brain  
286 scans were manually checked for the segmentation precision and 3 MCI participants were further  
287 removed from the analysis due to severe segmentation errors.

288 For cortical thickness, the minimal distance between the gray-white matter border and the pial surface,  
289 statistical analyses were calculated across the whole brain using the FreeSurfer built-in general linear  
290 model (GLM) toolbox to identify thickness of brain regions associated with hearing loss category  
291 (GLM 1) and CDTT (GLM 2). Cortical thickness has previously been validated against manual  
292 measurements as well as histological analysis (Cardinale et al., 2014; Kuperberg et al., 2003; Rosas et  
293 al., 2002; Salat et al., 2004) and has been shown to be reliable in healthy OA (Liem et al., 2015). In  
294 order to compute the GLMs, each participant's segmented brain was morphed to an average spherical  
295 surface and smoothed using a FWHM kernel of 15 mm. A significance threshold of  $p=.001$  was  
296 applied.

## 297 **2.7. Statistical analyses and covariates**

298 We used age, sex, and education as covariates in all statistical analyses (see Table 1). Comparing the  
299 gray matter volume of the cortical lobes between the diagnostic groups, we included the intracranial  
300 cavity (ICC) as a covariate in order to control for potential differences in premorbid brain volume  
301 between groups (Voevodskaya et al., 2014). When exploring the relationship between CDTT  
302 performance and brain structure, we controlled for hearing loss category in order to examine the  
303 relationship with CDTT and other measures independent of pure-tone thresholds.

304 Three families of statistical analyses were conducted as follows: First, the three diagnostic groups  
305 were compared in regard to their degree of hearing loss and (sub)cortical volumes using one-way  
306 ANOVAs (Section 3.1.). Second, the association between the two different measures of hearing loss  
307 (i.e., hearing loss category and CDTT) was explored within each diagnostic group using partial  
308 correlations (Section 3.2.). Third, in order to evaluate the associations between hearing loss and brain  
309 structure, hippocampal volumes were correlated with hearing loss measures using partial correlations  
310 and FreeSurfer analyses on cortical data were computed as described above (Section 3.3.). Unless  
311 otherwise indicated, an alpha level of  $\alpha = 0.05$  was accepted and effect sizes were indicated by partial  
312 eta squares ( $\eta_p^2$ ).

313

314

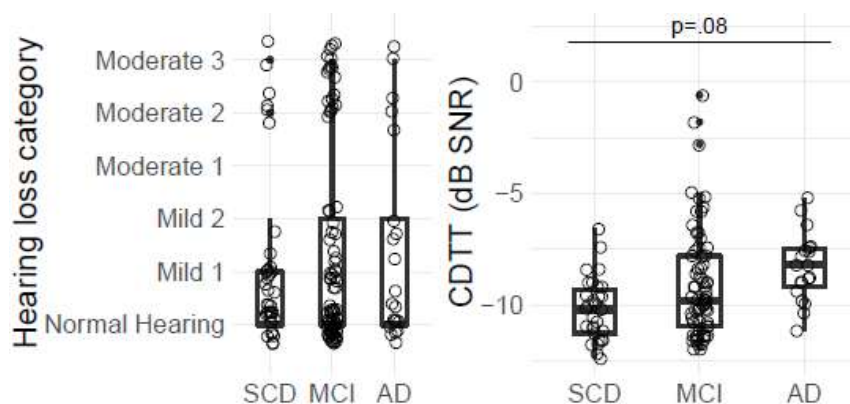
315

### 316 3. Results

#### 317 3.1. Diagnostic group comparisons

##### 318 3.1.1. Hearing loss

319 Figure 1 shows the diagnostic group differences in hearing loss measures. The diagnostic groups did  
320 not differ significantly in their hearing loss categories ( $F(2,126)=.33, p=.72, \eta_p^2=.005$ ; Figure 1, left  
321 panel). Most participants were normal hearing or had mild hearing loss, although a notable minority  
322 had moderate or greater hearing loss. Diagnostic groups differed in CDTT performance  
323 ( $F(2,109)=2.73, p=.07, \eta_p^2=.05$ ), see Figure 1 right-hand side. Post-hoc t-tests showed that there were  
324 higher speech reception thresholds (i.e., poorer performance on the CDTT) in the AD compared to the  
325 SCD group ( $p=.08$ ), with this difference between groups approaching but not reaching significance.



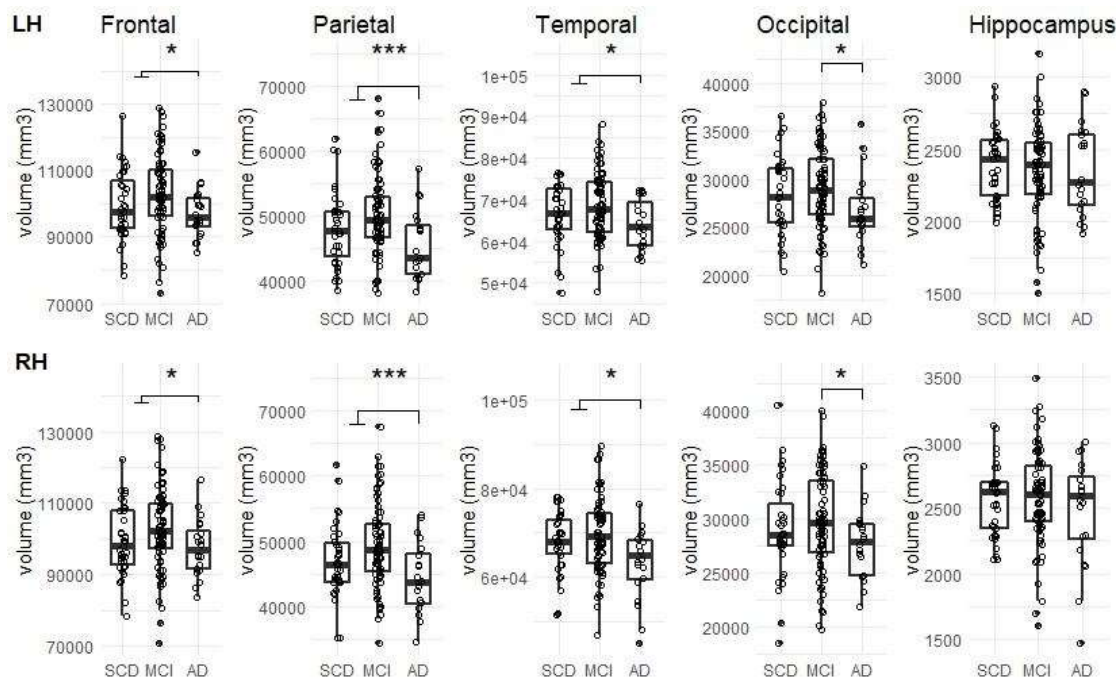
326  
327 *Figure 1:* Figure 1 depicts the diagnostic group comparisons in pure-tone hearing loss categories and  
328 in speech-in-noise thresholds (dB SNR) on the Canadian Digit Triplet Test (CDTT). There was no  
329 significant difference in pure-tone hearing loss category between cognitive diagnostic groups, but the  
330 ANOVA indicated differences in speech-in-noise thresholds between groups which were higher  
331 (worse performance) in the AD compared to the SCD group (controlling for age, sex, education, and  
332 HL category). The boxplot lines represent the group median (thick line) and the 25<sup>th</sup> and 75<sup>th</sup>  
333 percentiles (outer lines). SCD: subjective cognitive decline, MCI: mild cognitive impairment, AD:  
334 Alzheimer's dementia.

335

336

##### 337 3.1.2. Cortical and hippocampal volume

338 The F-statistics and the box plots of the results of the one-way ANOVAs comparing diagnostic groups  
339 in cortical volume of the extracted lobes and hippocampal volume can be found in Table 3 and Figure  
340 2. All lobes, but not the hippocampus, showed significant group differences mostly revealing that the  
341 AD group had lower cortical volume than the SCD and the MCI groups, while the SCD and the MCI  
342 groups did not differ from each other.



343  
 344 *Figure 2:* Figure 2 shows the diagnostic group comparisons in gray matter volume ( $\text{mm}^3$ ) in lobes of  
 345 the left (LH) and right (RH) hemisphere and the hippocampus. Controlling for age, sex, education, and  
 346 intracranial cavity (ICC), the Alzheimer’s dementia (AD) group had more atrophy than the subjective  
 347 cognitive decline (SCD) and the mild cognitive impairment (MCI) group in all cortical brain areas,  
 348 with the exception of the hippocampus ( $*p < .05$ ,  $***p < .001$ ). The boxplot lines represent the group  
 349 median (thick line) and the 25<sup>th</sup> and 75<sup>th</sup> percentiles (outer lines).

350  
 351  
 352 *Table 3:* Table 3 shows the diagnostic group differences in cortical and hippocampal volume with  
 353  $F(2,124)$ -values,  $p$ -values,  $\eta_p^2$  as a measure for the effect size, as well as post-hoc  $t$ -tests for diagnostic  
 354 group comparisons in gray matter volume.

	$F$	$p$	$\eta_p^2$	Post-hoc
LH				
Frontal lobe	5.34	<b>.006</b>	.08	SCD,MCI>AD
Parietal lobe	9.47	<b>&lt;.001</b>	.32	SCD,MCI>AD
Temporal lobe	6.04	<b>.003</b>	.09	SCD,MCI>AD
Occipital lobe	2.97	.06	.05	MCI>AD
Hippocampus	.69	.50	.01	-
RH				
Frontal lobe	5.27	<b>.006</b>	.08	SCD,MCI>AD
Parietal lobe	9.94	<b>&lt;.001</b>	.14	SCD,MCI>AD
Temporal lobe	7.62	<b>.001</b>	.11	SCD,MCI>AD
Occipital lobe	3.22	<b>.043</b>	.05	MCI>AD
Hippocampus	1.55	.22	.02	-

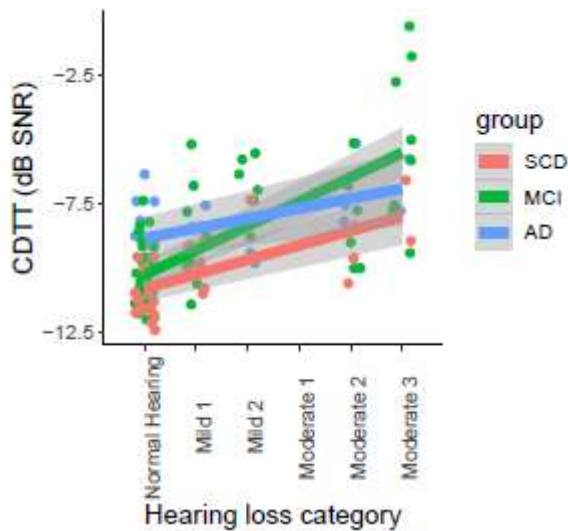
355 LH=left hemisphere, RH=right hemisphere, SCD=subjective cognitive decline, MCI=mild cognitive  
 356 impairment, AD=Alzheimer’s dementia.

357

### 358 3.2. Associations between hearing loss category and speech-in-noise thresholds

359 Partial correlations between hearing loss category and CDTT thresholds (see Figure 3) revealed  
 360 significant positive associations in the SCD group ( $r(24)=.64$ ,  $p<.001$ ,  $R^2=.41$ ), the MCI group

361 ( $r(63)=.70, p<.001, R^2=.49$ ), and approaching significance in the AD group ( $r(14)=.43, p=.07,$   
 362  $R^2=.18$ ), suggesting that the more pure-tone hearing loss our participants exhibited, the greater (worse)  
 363 their speech-in-noise thresholds were on the CDTT. Furthermore, even though the association was  
 364 only trending in the AD group, the Fisher r-to-z transformation of the correlation coefficients  
 365 suggested that the strengths of the associations were not different between the diagnostic groups (SCD  
 366 vs. MCI  $p=.56$ , SCD vs. AD  $p=.36$ , MCI vs. AD  $p=.58$ ).



367  
 368 *Figure 3:* Figure 3 shows the associations between pure-tone hearing loss category and the speech-in-  
 369 noise thresholds (dB SNR) on the Canadian Digit Triplet Test (CDTT) for the subjective cognitive  
 370 decline (SCD), mild cognitive impairment (MCI), and Alzheimer’s dementia (AD) groups: Significant  
 371 positive associations were found in the SCD group ( $R^2=.41$ ) and the MCI group ( $R^2=.49$  or  $.30$  when  
 372 outliers were excluded), and approaching significance ( $p < .1$ ) in the AD group ( $R^2=.18$ ). Grey areas  
 373 indicate 95% confidence intervals.

374  
 375 **3.3. Associations between hearing measures and brain structural measures**

376 **3.3.1. Hearing loss and hippocampal volume**

377 Table 4 and Figure 4 show the associations between the two hearing loss measures and hippocampal  
 378 volumes. SCD participants who had greater pure-tone hearing loss had lower gray matter volume in  
 379 the right hippocampus ( $R^2=.17$ ). No effects were found in the MCI and AD groups, suggesting that for  
 380 those with stronger cognitive impairment, the association between pure-tone hearing loss and brain  
 381 structure was weaker.

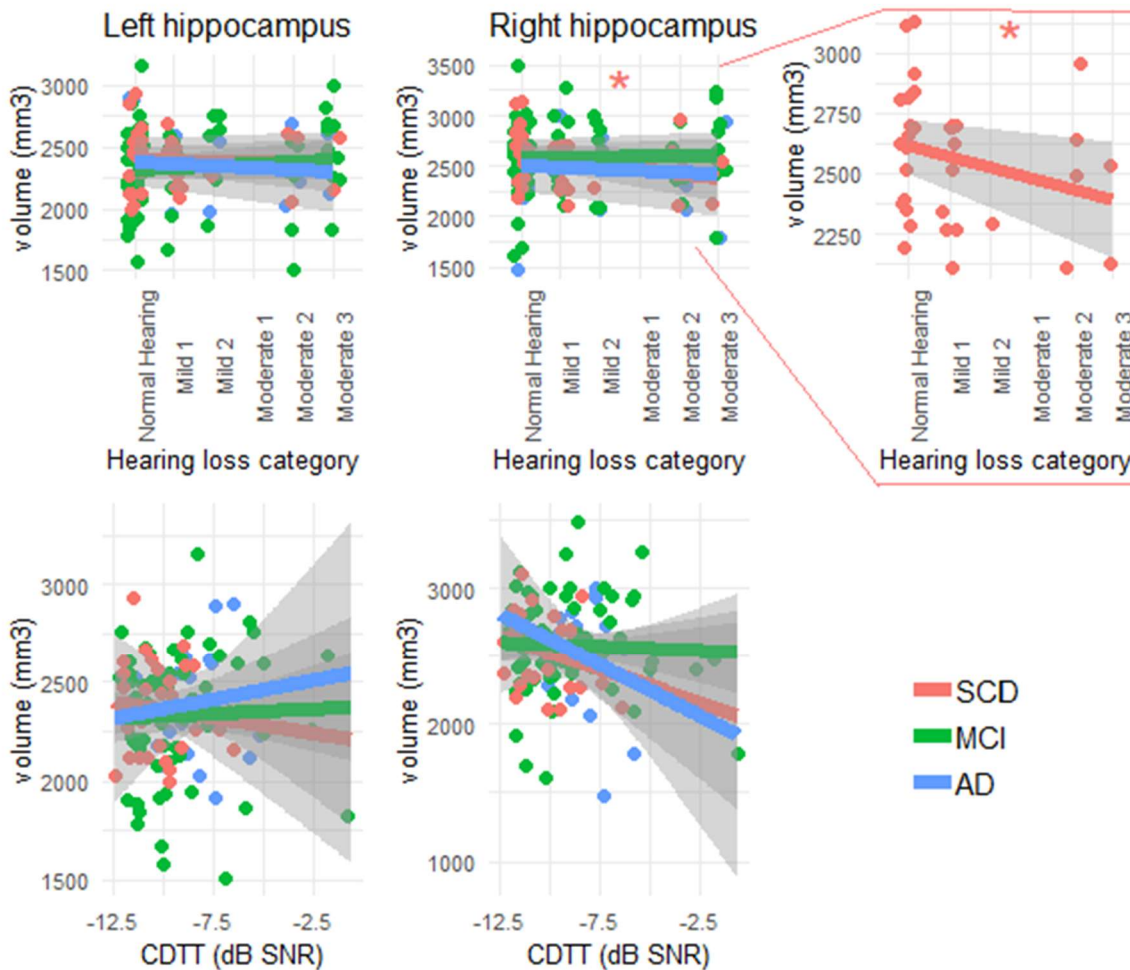
382 *Table 4:*

383 Partial correlations controlled for age, sex, and education between pure-tone hearing loss category as  
 384 well as CDTT performance (controlled also for hearing loss category) and hippocampal volume are  
 385 shown for each cognitive diagnostic group separately.

	SCD		MCI		AD	
	Left HC	Right HC	Left HC	Right HC	Left HC	Right HC
Hearing loss category	-.14	<b>-.41</b>	.09	-.07	-.30	-.38
CDTT	.02	-.02	.08	.00	-.52	.01

386 Bold indicates  $p < .05$ . HC=hippocampus. SCD=subjective cognitive decline, MCI=mild cognitive  
 387 impairment, AD=Alzheimer’s dementia.

388



389  
390 *Figure 4:* Figure 4 shows the correlations between pure-tone hearing loss category as well as the  
391 speech-in-noise thresholds (dB SNR) on the Canadian Digit Triplet Test (CDTT) and hippocampal  
392 volume (mm<sup>3</sup>). In the subjective cognitive decline (SCD) group, there was a significant association,  
393 with greater hearing loss associated with lower right hippocampal volume, marked with colored square  
394 (\**p* < .05). Grey areas indicate 95% confidence intervals. MCI: mild cognitive impairment, AD:  
395 Alzheimer's dementia.

396  
397

### 398 3.3.2. Hearing loss and cortical thickness

399 The whole-brain GLM model showed that there were two significant positive associations between  
400 hearing loss category and cortical thickness in the left superior temporal gyrus and the right pars  
401 opercularis (*p* < .001) as shown in Figure 5 and Table 5. Both of these significant associations were  
402 observed in the SCD group, suggesting that those who had more pure-tone hearing loss had more  
403 cortical thickness in those brain regions. No significant associations were found in the MCI or AD  
404 groups once we controlled for multiple comparisons.

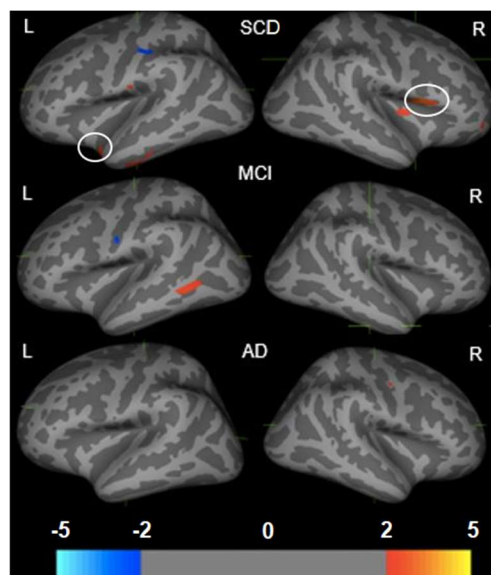
405  
406  
407



408 *Table 5:* Table 5 shows the significant effects of the associations between pure-tone hearing loss  
 409 category as well as the speech-in-noise thresholds (dB SNR) on the Canadian Digit Triplet Test  
 410 (CDTT) and cortical thickness in the subjective cognitive decline (SCD), mild cognitive impairment  
 411 (MCI), and Alzheimer’s dementia (AD) groups. The log<sub>10</sub>(p) at each vertex was set to 3 (values > 3  
 412 correspond to  $p < .001$ ).

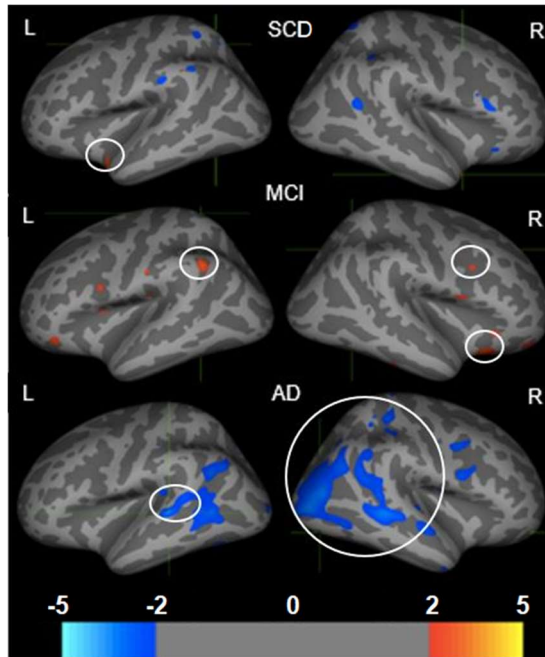
SCD			Correlation	Max	MNI		
					x	y	z
Hearing loss category							
	LH	Superior temporal gyrus	positive	3.06	-39.88	-20.29	-20.40
	RH	Pars opercularis	positive	3.75	21.98	39.72	-10.32
CDTT							
	LH	Posterior cingulate cortex	positive	3.98	37.97	-8.41	13.51
	RH	Superior temporal gyrus	positive	3.08	37.77	-28.2	-25.35
MCI							
Hearing loss category			-	-	-	-	-
	LH	Supramarginal gyrus	positive	3.10	-32.09	-47.51	24.74
	RH	Superior frontal gyrus	positive	3.45	-31.23	79.16	9.91
		Lateral orbitofrontal gyrus	positive	3.52	0.92	72.74	-45.23
		Anterior cingulate gyrus	positive	3.25	-33.03	61.90	14.18
AD							
Hearing loss category			-	-	-	-	-
	LH	Superior temporal gyrus	negative	-3.30	-39.88	-20.29	-20.40
	RH	Superior parietal gyrus	negative	-3.50	-18.38	-95.97	9.31
		Superior temporal sulcus	negative	-3.34	37.77	-28.2	-25.35
		Lateral occipital gyrus	negative	-3.32	10.43	-92.77	-20.07
		Inferior temporal gyrus	negative	-3.05	18.67	-11.54	-64.7

413 LH: Left hemisphere, RH: Right hemisphere, Max: log<sub>10</sub>(p) at peak, Montreal Neurological Institute (MNI) coordinates.  
 414



415 *Figure 5:* Figure 5 depicts the significant associations between pure-tone hearing loss category and  
 416 cortical thickness in the subjective cognitive decline (SCD), the mild cognitive impairment (MCI), and  
 417 the Alzheimer’s dementia (AD) group (red = positive association, blue = negative association). For  
 418 graphical purposes, the log<sub>10</sub>(p) at each vertex was set to 2 (values > 2 correspond to  $p < .01$ ), while  
 419 the  $p$ -value was lowered to  $p < .001$  to control for multiple comparisons in Table 5 where the  
 420 significant brain clusters are listed. Significant ( $p < .001$ ) positive correlations (i.e., greater pure-tone  
 421 hearing loss – greater CT) were found in the SCD group for the left superior temporal gyrus and the  
 422 right pars opercularis (indicated with circles).  
 423

424  
425 The whole-brain GLM model for CDTT resulted in several significant clusters across the brain as  
426 shown in Figure 6 and Table 5. In the SCD and MCI groups, there were a few positive correlations  
427 found. In the AD group, there were only negative correlations in temporal, parietal, and occipital brain  
428 regions suggesting that those who have greater hearing loss, as measured by speech-in-noise reception  
429 thresholds, have lower cortical thickness in a number of brain regions across the cortex.



430  
431 *Figure 6:* Figure 6 shows the significant associations between speech-in-noise thresholds (dB SNR) on  
432 the Canadian Digit Triplet Test (CDTT) and cortical thickness in subjective cognitive decline (SCD),  
433 mild cognitive impairment (MCI), and Alzheimer's dementia (AD) groups (red = positive association,  
434 blue = negative association). The  $\log_{10}(p)$  at each vertex was set to 2 for the figure (values  $> 2$   
435 correspond to  $p < .01$ ), while the  $p$ -value was lowered to  $p < .001$  to control for multiple comparisons  
436 in Table 5 where the significant brain clusters are listed. Significant associations at  $p < .001$  were found  
437 as indicated with circles.

#### 438 439 **4. Discussion**

440 The findings of the present study indicate that hearing loss status is differently associated with brain  
441 anatomical traits in our diagnostic groups. In persons at risk for dementia (i.e., SCD), pure-tone  
442 hearing loss category was associated with reduced right hippocampal volume and increased cortical  
443 thickness in the left superior temporal gyrus and the right pars opercularis. For participants with  
444 diagnosed AD, the CDTT speech-in-noise thresholds are associated with wide-spread loss in cortical  
445 thickness. These findings are consistent with the sensory deprivation hypothesis. Importantly, we  
446 demonstrate that diagnostic group moderates the relationship between both hearing measures and brain  
447 structure. Our results also provide new insights into the differential relationship between pure-tone  
448 threshold measures of hearing loss (i.e., categories based on pure-tone thresholds) and measures of  
449 auditory processing (i.e., CDTT) with brain structure. The significance and implications of the  
450 findings are discussed in detail in the next sections.

451 **4.1. The diagnostic group moderates the relationship between pure-tone hearing loss and**  
452 **brain structure**

453 We found that our diagnostic groups did not differ in hearing loss category based on detection of pure  
454 tones when controlling for age, sex, and education. Yet, the diagnostic groups differed in the  
455 associations between pure-tone hearing loss and neuroanatomical traits. Importantly, this suggests that  
456 associations between pure-tone hearing loss and brain structure are not confounded by group  
457 differences in their pure-tone hearing. A previous study reported that there was a higher prevalence of  
458 hearing loss (> 35 dB HL based on PTA of 500, 1000, 2000, and 4000 Hz in the better ear) in MCI  
459 compared to healthy older adults and in AD compared to MCI and healthy older adults (Quaranta et  
460 al., 2014); however, most studies do not have such data because they examine the association between  
461 pure-tone hearing loss and cognitive decline in healthy older adults or in a group who were initially  
462 healthy and at risk of developing dementia (de la Fuente et al., 2019; Deal et al., 2015, 2016, 2019;  
463 Okely et al., 2019; Osler et al., 2019).

464

465 Furthermore, our data indicate that, as expected, those with a higher degree of cognitive impairment  
466 also had more brain atrophy. Mostly, the AD group had lower lobe-level gray matter volume  
467 compared to the SCD and MCI group, except for the occipital lobe for which the AD group only had  
468 smaller volume than the MCI group. This is consistent with the well-known finding that dementia-  
469 related neuropathology is related to brain atrophy (for a review see Pini et al., 2016). However, we did  
470 not find a difference between the diagnostic groups in the hippocampal volume, which is somewhat  
471 unexpected. We note that hippocampal volume was highly variable in our MCI group. There is  
472 literature suggesting that those with MCI may be very heterogenous, even when controlling for  
473 various underlying neurophysiological causes, likely because some (approximately > 40%) of these  
474 individuals will progress to AD or other forms of dementia (Roberts & Knopman, 2013), while others  
475 will not (Nordlund et al., 2005).

476 We assessed the association between hearing loss categories, based on the detection of pure tones, and  
477 hippocampal volume. We found that more severe pure-tone hearing loss was related to more cortical  
478 atrophy in the right hippocampus, but only in the SCD group. Notably, our results indicate that SCD  
479 participants with moderate hearing loss (those in hearing loss categories 5 or 6) have 4% lower volume  
480 in the right hippocampus than SCD participants with normal hearing or mild hearing loss (those in  
481 hearing loss categories 1, 2, or 3), even after controlling for age, sex, and education. In other words, the  
482 right hippocampus of these individuals with moderate to severe hearing loss “looks” approximately 8  
483 years older given that the normal shrinkage is approximately 0.5% annually for people above 60 years  
484 of age (Fjell et al., 2009). Previous cross-sectional research has found similar associations between  
485 pure-tone hearing loss and hippocampal volume in healthy older adults (Uchida et al., 2018). There  
486 have been similar findings in longitudinal studies showing accelerated decline in the hippocampus (Xu

487 et al., 2019) and in the right parahippocampus (Lin et al., 2014) across time in healthy older adults  
488 with pure-tone hearing loss. Our results therefore extend previous findings showing that the  
489 association between hearing loss and hippocampal volume is also evident in older adults who  
490 subjectively believe that their cognition has declined and who are at risk of developing Alzheimer's  
491 disease. Future research should investigate a possible link between hearing loss, cognition, and  
492 hippocampal volume, given that cognitively healthy older adults with greater pure-tone hearing loss  
493 perform worse on memory tasks such as in (delayed) word recall (Colsher & Wallace, 1990; Deal et  
494 al., 2015; Ray et al., 2018) and in the free and cued selective reminding test (FCSRT) (Lin, Ferrucci, et  
495 al., 2011)) and performance in such tasks is mediated by the hippocampus (e.g. word recall (Fernández  
496 et al., 1999) and FCSRT (Slachevsky et al., 2018)), while there are also sex differences to be  
497 considered (Al-Yawer et al., submitted).

498 In contrast, the FreeSurfer-based cortical thickness analyses revealed positive associations between  
499 pure-tone hearing loss and cortical thickness in the SCD group (corrected for multiple comparisons),  
500 but not in the MCI and the AD group. The results suggest that the associations between pure-tone  
501 hearing loss and gray matter loss are undetectable or not significant in groups with greater cognitive  
502 impairment (i.e., MCI and particularly AD), even though they exhibited strong reductions in gray  
503 matter as compared to the SCD group. This is consistent with Xu et al. (2019) who found that more  
504 rapid decline in the hippocampus in those with greater pure-tone hearing loss in the preclinical stage  
505 (i.e., when AD is clinically asymptomatic but biomarkers suggest the presence of amyloid pathology)  
506 and in MCI, but not in individuals already diagnosed with dementia. Nevertheless, it remains an open  
507 question as to whether persons with either MCI or AD who have pure-tone hearing loss show greater  
508 cognitive decline than those without pure-tone hearing loss.

509 Interestingly, the associations between pure-tone hearing loss and cortical thickness in the SCD group  
510 were mostly positive, meaning that those with greater pure-tone hearing loss had more cortical  
511 thickness in the left superior temporal gyrus (STG) and the right pars opercularis. Previous studies also  
512 have found positive relationships between degree of pure-tone hearing loss and gray matter volume  
513 which were interpreted using a compensation framework (Alfandari et al., 2018). The left STG,  
514 belonging to the auditory association cortex, is involved in the spectro-temporal analysis of speech  
515 (Hickok & Poeppel, 2007) and multisensory integration of auditory and visual speech cues (Callan et  
516 al., 2001; Möttönen et al., 2002). The structural integrity of the left STG is a predictor of auditory  
517 working memory (Leff et al., 2009). It is possible therefore that those who have greater pure-tone  
518 hearing loss rely more on multisensory cues (e.g., visual speech cues) and on working memory during  
519 speech understanding such that they show alterations in the structure of the STG as a function of pure-  
520 tone hearing loss. Similarly, the right pars opercularis is involved in speech processing (Vigneau et al.,  
521 2011), particularly in speech perception tasks involving vowel tone pitch discrimination (Joanisse &  
522 Gati, 2003), syllable discrimination (Poeppel et al., 2004), and in sentence pitch and linguistic prosody  
523 processing (Meyer et al., 2002). Thus, it is possible that those with greater pure-tone hearing loss

524 might rely more on prosodic speech cues (Giroud et al., 2018, 2019), leading to structural plasticity in  
525 the right pars opercularis.

526 In sum, our cross-sectional analysis indicates that moderate pure-tone hearing loss in those who are  
527 otherwise cognitively healthy, but who have subjective cognitive complaints, is associated with lower  
528 volume in the right hippocampus, a biomarker of dementia. We note that we did not find lower  
529 hippocampal volume as a function of pure-tone hearing loss in the MCI or AD group in our sample.  
530 Furthermore, those with greater pure-tone hearing loss in the SCD group also exhibited more cortical  
531 thickness in the left STG and the right pars opercularis. This finding suggests potentially  
532 compensatory structural plasticity insofar as those with greater pure-tone hearing loss may rely more  
533 on multisensory and prosodic speech cues as well as the phonological loop component in their  
534 working memory during speech understanding compared to those with less severe pure-tone hearing  
535 loss. The fact that these hearing-brain structure associations were found only in individuals with SCD,  
536 but not MCI or AD, suggests that dementia-related neuropathology, which is reflected in brain atrophy  
537 among other biomarkers, overshadows the potential effects of pure-tone hearing loss on brain  
538 structure.

#### 539 **4.2. Hearing loss - brain structure associations depend on hearing loss measurement**

540 In addition to the association between measures of brain structure and hearing loss category based on  
541 the detection of pure tones, we conducted the same analyses using the CDTT measure of speech-in-  
542 noise threshold. Independent of hearing loss category, CDTT speech-in-noise thresholds were lower  
543 (better) for the SCD group compared to the AD group. This result suggests that those with AD have  
544 difficulty recognizing even very simple speech stimuli in noise, which was also shown in previous  
545 research which found strong dysfunctions of auditory processing in individuals with AD and partially  
546 also in those with MCI (Idrizbegovic et al., 2011).

547 We also investigated the associations between the CDTT results and cortical thickness in all three  
548 diagnostic groups. For the AD group only, we found negative correlations between the CDTT speech-  
549 in-noise thresholds and brain structure across the whole brain, such that those with poorer performance  
550 on the CDTT had lower gray matter volume in bilateral frontal, parietal, and temporal lobes, as well as  
551 in the right occipital lobe and lower cortical thickness in bilateral superior temporal gyri, right inferior  
552 temporal gyrus, right lateral occipital gyrus, and the right superior parietal gyrus. Previous research  
553 has found similar associations between speech-in-noise perception performance and macro-anatomical  
554 measures of the cortex in healthy older adults, which were more focal in nature (Giroud et al.,  
555 submitted, 2018; Rudner et al., 2019). Cortical volume and cortical thickness change as a function of  
556 experience, training, pathology, and lifespan changes and are therefore subject to plasticity (Bermudez  
557 et al., 2009; Engvig et al., 2010; Fjell et al., 2009). It is possible that poorer CDTT speech-in-noise  
558 thresholds in the AD group might correspond to a lower number, packing density, and size of cells  
559 within neural columns (Rakic, 1988, 1995) in multiple brain regions. Thus, these results may support

560 the sensory deprivation hypothesis insofar as continued impoverished auditory input may have wide-  
561 spread effects across the cortex that manifests as gray matter atrophy.

562 An alternative, and equally likely an explanation, derives from the fact that a large (sub)cortical brain  
563 network supporting auditory-cognitive functioning is involved in speech-in-noise processing from the  
564 auditory brainstem (Anderson et al., 2011, 2013) up to higher areas such as the right inferior frontal  
565 gyrus and the right insula (Bidelman & Howell, 2016), including parietal brain regions such as the  
566 precuneus (Wong et al., 2009). These brain regions involved in speech-in-noise processing are similar  
567 to the brain structures we show to correlate with CDTT speech-in-noise reception in the present study.  
568 Thus, it also is possible that the association found in the present study between the CDTT measure of  
569 speech-in-noise processing and brain structures reflect the neural sources involved in performing the  
570 complex task of speech discrimination in noise. In other words, it is possible that individuals with  
571 reduced gray matter volume and cortical thickness (more atrophy, i.e., those with AD) in those brain  
572 regions perform worse on the speech-in-noise task due to less available neural resources. However,  
573 longitudinal research and functional imaging is needed to clarify the direction of the results since it is  
574 also possible that increasing difficulties understanding speech-in-noise perception could lead to a  
575 structural decline in those brain regions, as suggested by a recent cross-sectional study in healthy older  
576 adults (Rudner et al., 2019). The study found that lower performance on a speech-in-noise task was  
577 related to lower gray matter volume in brain regions associated with hearing and cognition.

578 Similar to Giroud et al. (2018), we found associations between speech-in-noise perception  
579 performances and brain structures in visual brain areas (i.e., volume in the right occipital lobe and  
580 cortical thickness in the right lateral occipital gyrus). Visual activation is present during hearing tasks  
581 (Giraud & Truy, 2002), especially in individuals with severe hearing loss such as those using cochlear  
582 implants (Giraud et al., 2001). It is possible that individuals with greater hearing loss rely more on  
583 visual speech cues and therefore co-activate visual areas during speech understanding, potentially even  
584 when there are no visual speech cues available. We speculate that this interpretation could be valid in  
585 the present study because most participants had good visual acuity (Table 1). Nevertheless, we  
586 recognize that there is a distinction between structure and function and that the association between  
587 neural activation and cortical thickness is not straightforward.

588 As mentioned above, we only found very wide-spread and negative associations between CDTT  
589 speech-in-noise reception thresholds and brain structure in the AD group who had most pronounced  
590 brain atrophy. In the other two groups, we found few and only very focal positive associations  
591 between speech-in-noise reception thresholds and cortical thickness (SCD: left posterior cingulum,  
592 right superior temporal gyrus; MCI: right superior frontal gyrus, right lateral orbitofrontal gyrus, and  
593 anterior cingulum). Given that these groups have less brain atrophy than the AD group, our findings  
594 suggest that individuals who have better brain structural integrity in regions involved in cognitive  
595 processes (Metzler-Baddeley et al., 2012; Schermuly et al., 2010) during speech-in-noise perception

596 (Bidelman & Howell, 2016; Du et al., 2016) might be able to use these regions to compensate for  
597 difficulties understanding speech-in-noise (Rönnberg et al., 2008, 2013).

598 Overall, our data provide evidence that speech-in-noise recognition may be disproportionately  
599 impaired in older adults with AD. Our results further show that persons with AD who have more  
600 structural decline in the frontal, temporal, and parietal lobes perform worse on the CDTT. It is  
601 possible, that dementia-related neuropathology, which leads to accelerated decline of brain structures,  
602 may exacerbate or lead to a decline in speech processing in adverse listening conditions. Alternatively,  
603 declines in auditory processing may have wide-spread effects on brain atrophy in older adults with  
604 AD. Longitudinal studies are needed to clarify the direction of these effects.

#### 605 **4.3. Limitations**

606 One limitation of the present study is that we do not have standard pure-tone audiograms for our  
607 participants because of the audiometric screening approach that was used. However, we were able to  
608 validate our hearing loss categorization method by mapping it to grades of hearing determined based  
609 on audiograms in two independent samples of older adults. Moreover, we have shown that there is a  
610 significant positive correlation between our hearing loss categorization and the speech-in-noise  
611 reception thresholds in the CDTT ( $R^2$  ranging from .18 - .41 depending on diagnostic group),  
612 indicating that our hearing loss categorization meaningfully reflects losses in hearing that affect  
613 speech-in-noise perception as shown previously in the literature (Dubno et al., 1984; Giroud et al.,  
614 2017; Gordon-Salant & Fitzgibbons, 2001; Zekveld et al., 2011).

615 Another shortcoming is the cross-sectional nature of the study. In order to clarify the direction of the  
616 hearing loss - brain volume/thickness associations, longitudinal data are needed. In the COMPASS-  
617 ND study, longitudinal data are currently being collected from the same participants. Thus, the current  
618 report is a first step toward understanding the possible effects of hearing loss on brain structures in  
619 those diagnostic groups.

620 Furthermore, it remains an open question as to what degree our sample is representative of others with  
621 SCD, MCI, and AD in the general population. First, we did not find differences in hippocampal  
622 volume between the diagnostic groups, even though this is a well-reported finding in the literature.  
623 Second, our diagnostic groups have skewed sex ratios, which may not be representative of each of the  
624 diagnostic groups. Finally, our participants were self-selected volunteers from clinical research sites  
625 who agreed to be in a research study involving the administration of an extensive test battery.

#### 626 **4.4. Conclusion**

627 Our study investigated the association between hearing loss and brain structure in older adults at risk  
628 of and with dementia, extending previous research on healthy older adults. As compared to previous  
629 research, we not only tested pure-tone thresholds to assess hearing loss, but also included a measure of

630 auditory perception, namely speech-in-noise reception thresholds. Older adults with near-normal pure-  
631 tone thresholds often report to have difficulties understanding speech in noisy environments.

632 Our results are consistent with the sensory deprivation hypothesis. In those with greater pure-tone  
633 hearing loss in the SCD group we found lower hippocampal volume, which is a biomarker of  
634 dementia, as well as more cortical thickness in auditory and higher-order language-related areas  
635 potentially reflecting compensatory effects. No such associations between pure-tone hearing loss and  
636 brain structure were found in MCI or AD suggesting that pathology-related atrophy dominates  
637 potential neuroanatomical effects of pure-tone hearing loss. Nevertheless, in the MCI and AD group  
638 only, we found that those with greater speech-in-noise reception thresholds exhibited lower cortical  
639 thickness globally in both hemispheres. It is therefore possible that an age-related decline in speech-in-  
640 noise understanding may result in brain structural decline in older adults who have (mild) cognitive  
641 impairment. Alternatively, and because the AD group performed slightly worse in the speech-in-noise  
642 task compared to the SCD group, it is also possible that dementia-related atrophy in brain regions  
643 supporting auditory processing leads to a decline in speech-in-noise understanding. Longitudinal  
644 research is needed to clarify the potential causal mechanisms. Our work extends the research on  
645 hearing-brain associations to include those who have subjective or objective cognitive complaints and  
646 suggests that these relationships evolve as disease progresses.

#### 647 **Acknowledgments**

648 This research was supported by an infrastructure and operating grant to the CCNA from the Canadian  
649 Institutes of Health Research (CIHR) (Grant no. CNA-137794). This grant supports the COMPASS-  
650 ND study and the work of CCNA Team 17 principal investigators (NP, KPF, PM, JBO, WW) and  
651 trainees (NG, FA, SR). NG was supported by an Early Postdoc Mobility grant from the Swiss  
652 National Science Foundation (grant nr. P2ZHP1\_174865). We gratefully acknowledge the important  
653 contributions of the COMPASS-ND PIT team, especially Victor Whitehead. We are grateful to  
654 Samantha Bishundayal and the Phillips CAP Lab for their contributions. We thank the COMPASS-ND  
655 research participants and site staff for their time. The data for the COMPASS-ND hearing loss  
656 validation was made possible using the data collected by the Canadian Longitudinal Study on Aging  
657 (CLSA). Funding for the CLSA is provided by the Government of Canada through the CIHR under  
658 grant reference: LSA 94473 and the Canada Foundation for Innovation. Part of this research has been  
659 conducted using the CLSA Baseline Comprehensive dataset version 3.2, under Application Number  
660 160605. The CLSA is led by Drs. Parminder Raina, Christina Wolfson, and Susan Kirkland. The  
661 opinions expressed in this manuscript are the authors' own and do not reflect the views of the  
662 Canadian Longitudinal Study on Aging.

663



## References

- 664  
665 Ad-Dab'bagh, Y., Lyttelton, O., Muehlboeck, J. S., Lepage, C., Einarson, D., Mok, K., Ivanov, O., Vincent,  
666 R. D., Lerch, J., & Fombonne, E. (2006). The CIVET image-processing environment: A fully  
667 automated comprehensive pipeline for anatomical neuroimaging research. *Proceedings of the*  
668 *12th Annual Meeting of the Organization for Human Brain Mapping*, 2266.
- 669 Albers, M. W., Gilmore, G. C., Kaye, J., Murphy, C., Wingfield, A., Bennett, D. A., Boxer, A. L., Buchman,  
670 A. S., Cruickshanks, K. J., Devanand, D. P., Duffy, C. J., Gall, C. M., Gates, G. A., Granholm, A.-C.,  
671 Hensch, T., Holtzer, R., Hyman, B. T., Lin, F. R., McKee, A. C., ... Zhang, L. I. (2015). At the  
672 interface of sensory and motor dysfunctions and Alzheimer's disease. *Alzheimer's & Dementia*,  
673 *11*(1), 70–98. <https://doi.org/10.1016/j.jalz.2014.04.514>
- 674 Albert, M. S., DeKosky, S. T., Dickson, D., Dubois, B., Feldman, H. H., Fox, N. C., Gamst, A., Holtzman, D.  
675 M., Jagust, W. J., Petersen, R. C., Snyder, P. J., Carrillo, M. C., Thies, B., & Phelps, C. H. (2011).  
676 The diagnosis of mild cognitive impairment due to Alzheimer's disease: Recommendations  
677 from the National Institute on Aging-Alzheimer's Association workgroups on diagnostic  
678 guidelines for Alzheimer's disease. *Alzheimer's & Dementia*, *7*(3), 270–279.  
679 <https://doi.org/10.1016/j.jalz.2011.03.008>
- 680 Alfandari, D., Vriend, C., Heslenfeld, D. J., Versfeld, N. J., Kramer, S. E., & Zekveld, A. A. (2018). Brain  
681 Volume Differences Associated With Hearing Impairment in Adults. *Trends in Hearing*, *22*.  
682 <https://doi.org/10.1177/2331216518763689>
- 683 Al-Yawer, F., Bruce, H., Li, K. Z. H., Pichora-Fuller, M. K., & Phillips, N. A. (submitted). Sex differences in  
684 the associations between neuropsychological test scores and pure-tone and speech-in-noise  
685 measures of hearing. *The Journals of Gerontology Series A: Biological Sciences and Medical*  
686 *Sciences*.
- 687 Anderson, S., Parbery-Clark, A., Yi, H.-G., & Kraus, N. (2011). A Neural Basis of Speech-in-Noise  
688 Perception in Older Adults. *Ear and Hearing*, *32*(6), 750–757.  
689 <https://doi.org/10.1097/AUD.0b013e31822229d3>
- 690 Anderson, S., White-Schwoch, T., Parbery-Clark, A., & Kraus, N. (2013). A dynamic auditory-cognitive  
691 system supports speech-in-noise perception in older adults. *Hearing Research*, *300*, 18–32.  
692 <https://doi.org/10.1016/j.heares.2013.03.006>
- 693 Arlinger, S. (2003). Negative consequences of uncorrected hearing loss—A review. *International*  
694 *Journal of Audiology*, *42*(sup2), 17–20.
- 695 Armstrong, N. M., An, Y., Doshi, J., Erus, G., Ferrucci, L., Davatzikos, C., Deal, J. A., Lin, F. R., & Resnick,  
696 S. M. (2019). Association of Midlife Hearing Impairment With Late-Life Temporal Lobe Volume  
697 Loss. *JAMA Otolaryngology–Head & Neck Surgery*, *145*(9), 794–802.  
698 <https://doi.org/10.1001/jamaoto.2019.1610>
- 699 Bermudez, P., Lerch, J. P., Evans, A. C., & Zatorre, R. J. (2009). Neuroanatomical correlates of  
700 musicianship as revealed by cortical thickness and voxel-based morphometry. *Cerebral Cortex*,  
701 *19*(7), 1583–1596. <https://doi.org/10.1093/cercor/bhn196>
- 702 Bidelman, G. M., & Howell, M. (2016). Functional changes in inter- and intra-hemispheric cortical  
703 processing underlying degraded speech perception. *NeuroImage*, *124*, 581–590.  
704 <https://doi.org/10.1016/j.neuroimage.2015.09.020>
- 705 Brookmeyer, R., Gray, S., & Kawas, C. (1998). Projections of Alzheimer's disease in the United States  
706 and the public health impact of delaying disease onset. *American Journal of Public Health*,  
707 *88*(9), 1337–1342. <https://doi.org/10.2105/AJPH.88.9.1337>
- 708 Caillaud, M., Hudon, C., Boller, B., Brambati, S., Duchesne, S., Lorrain, D., Gagnon, J.-F., Maltezos, S.,  
709 Mellah, S., Phillips, N., & Belleville, S. (2019). Evidence of a Relation Between Hippocampal  
710 Volume, White Matter Hyperintensities, and Cognition in Subjective Cognitive Decline and  
711 Mild Cognitive Impairment. *The Journals of Gerontology: Series B*.  
712 <https://doi.org/10.1093/geronb/gbz120>

- 713 Callan, D. E., Callan, A. M., Kroos, C., & Vatikiotis-Bateson, E. (2001). Multimodal contribution to speech  
714 perception revealed by independent component analysis: A single-sweep EEG case study.  
715 *Brain Research. Cognitive Brain Research*, *10*(3), 349–353.
- 716 Cardinale, F., Chinnici, G., Bramerio, M., Mai, R., Sartori, I., Cossu, M., Lo Russo, G., Castana, L.,  
717 Colombo, N., Caborni, C., De Momi, E., & Ferrigno, G. (2014). Validation of FreeSurfer-  
718 Estimated Brain Cortical Thickness: Comparison with Histologic Measurements.  
719 *Neuroinformatics*, *12*, 535–542.
- 720 Chertkow, H., Borrie, M., Whitehead, V., Black, S. E., Feldman, H. H., Gauthier, S., Hogan, D. B., Masellis,  
721 M., McGilton, K., Rockwood, K., Tierney, M. C., Andrew, M., Hsiung, G.-Y. R., Camicioli, R.,  
722 Smith, E. E., Fogarty, J., Lindsay, J., Best, S., Evans, A., ... Rylett, R. J. (2019). The Comprehensive  
723 Assessment of Neurodegeneration and Dementia: Canadian Cohort Study. *The Canadian*  
724 *Journal of Neurological Sciences. Le Journal Canadien Des Sciences Neurologiques*, *46*(5), 499–  
725 511. <https://doi.org/10.1017/cjn.2019.27>
- 726 Ciorba, A., Bianchini, C., Pelucchi, S., & Pastore, A. (2012). The impact of hearing loss on the quality of  
727 life of elderly adults. *Clinical Interventions in Aging*, *7*, 159–163.  
728 <https://doi.org/10.2147/CIA.S26059>
- 729 Collins, D. L., Holmes, C. J., Peters, T. M., & Evans, A. C. (1995). Automatic 3-D model-based  
730 neuroanatomical segmentation. *Human Brain Mapping*, *3*(3), 190–208.  
731 <https://doi.org/10.1002/hbm.460030304>
- 732 Collins, D. L., & Pruessner, J. C. (2010). Towards accurate, automatic segmentation of the hippocampus  
733 and amygdala from MRI by augmenting ANIMAL with a template library and label fusion.  
734 *Neuroimage*, *52*(4), 1355–1366.
- 735 Colsher, P. L., & Wallace, R. B. (1990). Are hearing and visual dysfunction associated with cognitive  
736 impairment? A population-based approach. *Journal of Applied Gerontology*, *9*(1), 91–105.
- 737 Curhan, S. G., Willett, W. C., Grodstein, F., & Curhan, G. C. (2019). Longitudinal study of hearing loss  
738 and subjective cognitive function decline in men. *Alzheimer's & Dementia*.
- 739 Dale, A. M., Fischl, B., & Sereno, M. I. (1999). Cortical Surface-Based Analysis; I. Segmentation and  
740 Surface Reconstruction. *NeuroImage*, *9*(2), 179–194.
- 741 Dale, A. M., & Sereno, M. I. (1993). Improved Localization of Cortical Activity by Combining EEG and  
742 MEG with MRI Cortical Surface Reconstruction: A Linear Approach. *Journal of Cognitive*  
743 *Neuroscience*, *5*(2), 162–176.
- 744 de la Fuente, J., Hjelmborg, J., Wod, M., de la Torre-Luque, A., Caballero, F. F., Christensen, K., & Ayuso-  
745 Mateos, J. L. (2019). Longitudinal Associations of Sensory and Cognitive Functioning: A  
746 Structural Equation Modeling Approach. *The Journals of Gerontology. Series B, Psychological*  
747 *Sciences and Social Sciences*, *74*(8), 1308–1316. <https://doi.org/10.1093/geronb/gby147>
- 748 Deal, J. A., Betz, J., Yaffe, K., Harris, T., Purchase-Helzner, E., Satterfield, S., Pratt, S., Govil, N.,  
749 Simonsick, E. M., & Lin, F. R. (2016). Hearing impairment and incident dementia and cognitive  
750 decline in older adults: The health ABC study. *Journals of Gerontology Series A: Biomedical*  
751 *Sciences and Medical Sciences*, *72*(5), 703–709.
- 752 Deal, J. A., Goman, A. M., Albert, M. S., Arnold, M. L., Burgard, S., Chisolm, T., Couper, D., Glynn, N. W.,  
753 Gmelin, T., Hayden, K. M., Mosley, T., Pankow, J. S., Reed, N., Sanchez, V. A., Richey Sharrett,  
754 A., Thomas, S. D., Coresh, J., & Lin, F. R. (2018). Hearing treatment for reducing cognitive  
755 decline: Design and methods of the Aging and Cognitive Health Evaluation in Elders  
756 randomized controlled trial. *Alzheimer's & Dementia: Translational Research & Clinical*  
757 *Interventions*, *4*, 499–507. <https://doi.org/10.1016/j.trci.2018.08.007>
- 758 Deal, J. A., Reed, N. S., Kravetz, A. D., Weinreich, H., Yeh, C., Lin, F. R., & Altan, A. (2019). Incident  
759 Hearing Loss and Comorbidity: A Longitudinal Administrative Claims Study. *JAMA*  
760 *Otolaryngology–Head & Neck Surgery*, *145*(1), 36–43.  
761 <https://doi.org/10.1001/jamaoto.2018.2876>
- 762 Deal, J. A., Sharrett, A. R., Albert, M. S., Coresh, J., Mosley, T. H., Knopman, D., Wruck, L. M., & Lin, F.  
763 R. (2015). Hearing impairment and cognitive decline: A pilot study conducted within the

- 764 atherosclerosis risk in communities neurocognitive study. *American Journal of Epidemiology*,  
765 181(9), 680–690. <https://doi.org/10.1093/aje/kwu333>
- 766 Du, Y., Buchsbaum, B. R., Grady, C. L., & Alain, C. (2016). Increased activity in frontal motor cortex  
767 compensates impaired speech perception in older adults. *Nature Communications*, 7.  
768 <https://doi.org/10.1038/ncomms12241>
- 769 Dubno, J. R., Dirks, D. D., & Morgan, D. E. (1984). Effects of age and mild hearing loss on speech  
770 recognition in noise. *The Journal of the Acoustical Society of America*, 76(1), 87–96.  
771 <https://doi.org/10.1121/1.391011>
- 772 Dubno, J. R., Eckert, M. A., Lee, F.-S., Matthews, L. J., & Schmiedt, R. A. (2013). Classifying Human  
773 Audiometric Phenotypes of Age-Related Hearing Loss from Animal Models. *Journal of the*  
774 *Association for Research in Otolaryngology*, 14(5), 687–701. [https://doi.org/10.1007/s10162-](https://doi.org/10.1007/s10162-013-0396-x)  
775 013-0396-x
- 776 Duchesne, S., Chouinard, I., Potvin, O., Fonov, V. S., Khademi, A., Bartha, R., Bellec, P., Collins, D. L.,  
777 Descoteaux, M., Hoge, R., McCreary, C. R., Ramirez, J., Scott, C. J. M., Smith, E. E., Strother, S.  
778 C., Black, S. E., & for the CIMA-Q group and the CCNA group. (2019). The Canadian Dementia  
779 Imaging Protocol: Harmonizing National Cohorts. *Journal of Magnetic Resonance Imaging*,  
780 49(2), 456–465. <https://doi.org/10.1002/jmri.26197>
- 781 Dufouil, C., Fuhrer, R., & Alperovitch, A. (2005). Subjective Cognitive Complaints and Cognitive Decline:  
782 Consequence or Predictor? The Epidemiology of Vascular Aging Study. *Journal of the American*  
783 *Geriatrics Society*, 53(4), 616–621. <https://doi.org/10.1111/j.1532-5415.2005.53209.x>
- 784 Eckert, M. A., Cute, S. L., Vaden, K. I., Kuchinsky, S. E., & Dubno, J. R. (2012). Auditory Cortex Signs of  
785 Age-Related Hearing Loss. *JARO: Journal of the Association for Research in Otolaryngology*,  
786 13(5), 703–713. <https://doi.org/10.1007/s10162-012-0332-5>
- 787 Eckert, M. A., Vaden Jr, K. I., & Dubno, J. R. (2019). Age-Related Hearing Loss Associations With Changes  
788 in Brain Morphology. *Trends in Hearing*, 23, 2331216519857267.
- 789 Ellaham, N., Giguère, C., Lagacé, J., & Pichora-Fuller, M. K. (2016). A software platform to administer  
790 the Canadian Digit Triplet Test. *Canadian Acoustics*, 44(3). [https://jcaa.caa-](https://jcaa.caa-aca.ca/index.php/jcaa/article/view/2960)  
791 aca.ca/index.php/jcaa/article/view/2960
- 792 Engvig, A., Fjell, A. M., Westlye, L. T., Moberget, T., Sundseth, Ø., Larsen, V. A., & Walhovd, K. B. (2010).  
793 Effects of memory training on cortical thickness in the elderly. *NeuroImage*, 52(4), 1667–1676.  
794 <https://doi.org/10.1016/j.neuroimage.2010.05.041>
- 795 Fernández, G., Effer, A., Grunwald, T., Pezer, N., Lehnertz, K., Dümpelmann, M., Roost, D. V., & Elger,  
796 C. E. (1999). Real-Time Tracking of Memory Formation in the Human Rhinal Cortex and  
797 Hippocampus. *Science*, 285(5433), 1582–1585.  
798 <https://doi.org/10.1126/science.285.5433.1582>
- 799 Fischer, M. E., Cruickshanks, K. J., Schubert, C. R., Pinto, A. A., Carlsson, C. M., Klein, B. E. K., Klein, R.,  
800 & Tweed, T. S. (2016). Age-Related Sensory Impairments and Risk of Cognitive Impairment.  
801 *Journal of the American Geriatrics Society*, 64(10), 1981–1987.  
802 <https://doi.org/10.1111/jgs.14308>
- 803 Fischl, B., & Dale, A. M. (2000). Measuring the thickness of the human cerebral cortex from magnetic  
804 resonance images. *Proceedings of the National Academy of Sciences*, 97(20), 11050–11055.
- 805 Fischl, B., Liu, A., & Dale, A. M. (2001). Automated manifold surgery: Constructing geometrically  
806 accurate and topologically correct models of the human cerebral cortex. *IEEE Transactions on*  
807 *Medical Imaging*, 20(1), 70–80.
- 808 Fischl, B., Salat, D. H., Busa, E., Albert, M., Dieterich, M., Haselgrove, C., Van Der Kouwe, A., Killiany, R.,  
809 Kennedy, D., Klaveness, S., Montillo, A., Makris, N., Rosen, B., & Dale, A.M. (2002). Whole brain  
810 segmentation: Automated labeling of neuroanatomical structures in the human brain. *Neuron*,  
811 33(3), 341–355.
- 812 Fischl, B., Salat, D. H., van der Kouwe, A. J. W., Makris, N., Ségonne, F., Quinn, B. T., & Dale, A. M.  
813 (2004). Sequence-independent segmentation of magnetic resonance images. *NeuroImage*, 23,  
814 69–84.

- 815 Fischl, B., Sereno, M. I., & Dale, A. M. (1999). Cortical Surface-Based Analysis; II. Inflation, Flattening,  
816 and a Surface-Based Coordinate System. *NeuroImage*, *9*(2), 195–207.
- 817 Fischl, B., Sereno, M. I., Tootell, R. B., & Dale, A. M. (1999). High-resolution intersubject averaging and  
818 a coordinate system for the cortical surface. *Human Brain Mapping*, *8*(4), 272–284.
- 819 Fischl, B., Van Der Kouwe, A., Destrieux, C., Halgren, E., Ségonne, F., Salat, D. H., Busa, E., Caviness, V.,  
820 Makris, N., Rosen, B., & Dale, A. M. (2004). Automatically Parcellating the Human Cerebral  
821 Cortex. *Cerebral Cortex*, *14*(1), 11–22.
- 822 Fjell, A. M., Walhovd, K. B., Fennema-Notestine, C., McEvoy, L. K., Hagler, D. J., Holland, D., Brewer, J.  
823 B., & Dale, A. M. (2009). One-Year Brain Atrophy Evident in Healthy Aging. *Journal of*  
824 *Neuroscience*, *29*(48), 15223–15231. <https://doi.org/10.1523/JNEUROSCI.3252-09.2009>
- 825 Fortunato, S., Forli, F., Guglielmi, V., De Corso, E., Paludetti, G., Berrettini, S., & Fetoni, A. R. (2016). A  
826 review of new insights on the association between hearing loss and cognitive decline in ageing.  
827 *Acta Otorhinolaryngologica Italica: Organo Ufficiale Della Societa Italiana Di*  
828 *Otorinolaringologia E Chirurgia Cervico-Facciale*, *36*(3), 155–166.  
829 <https://doi.org/10.14639/0392-100X-993>
- 830 Gates, Anderson, McCurry, Feeney, & Larson. (2011). Central auditory dysfunction as a harbinger of  
831 alzheimer dementia. *Archives of Otolaryngology–Head & Neck Surgery*, *137*(4), 390–395.  
832 <https://doi.org/10.1001/archoto.2011.28>
- 833 Giguère, C., Lagacé, J., Ellaham, N. N., Pichora-Fuller, M. K., Goy, H., Bégin, C., Alary, É., & Bowman, R.  
834 (2020). Development of the Canadian Digit Triplet Test in English and French. *The Journal of*  
835 *the Acoustical Society of America*, *147*(3), EL252–EL258. <https://doi.org/10.1121/10.0000825>
- 836 Giraud, A.-L., Price, C. J., Graham, J. M., Truy, E., & Frackowiak, R. S. (2001). Cross-modal plasticity  
837 underpins language recovery after cochlear implantation. *Neuron*, *30*(3), 657–663.
- 838 Giraud, A.-L., & Truy, E. (2002). The contribution of visual areas to speech comprehension: A PET study  
839 in cochlear implants patients and normal-hearing subjects. *Neuropsychologia*, *40*(9), 1562–  
840 1569. [https://doi.org/10.1016/S0028-3932\(02\)00023-4](https://doi.org/10.1016/S0028-3932(02)00023-4)
- 841 Giroud, N., Hirsiger, S., Muri, R., Kegel, A., Dillier, N., & Meyer, M. (2018). Neuroanatomical and resting  
842 state EEG power correlates of central hearing loss in older adults. *Brain Structure & Function*,  
843 *223*(1), 145–163. <https://doi.org/10.1007/s00429-017-1477-0>
- 844 Giroud, N., Keller, M., Hirsiger, S., Dellwo, V., & Meyer, M. (2019). Bridging the brain structure—Brain  
845 function gap in prosodic speech processing in older adults. *Neurobiology of Aging*, *80*, 116–  
846 126. <https://doi.org/10.1016/j.neurobiolaging.2019.04.017>
- 847 Giroud, N., Keller, M., & Meyer, M. (submitted). Interacting effects of frontal lobe neuroanatomy and  
848 working memory capacity to older listeners’ speech recognition in noise. *Brain Research*.
- 849 Giroud, N., Lemke, U., Reich, P., Matthes, K. L., & Meyer, M. (2017). The impact of hearing aids and  
850 age-related hearing loss on auditory plasticity across three months—An electrical  
851 neuroimaging study. *Hearing Research*, *353*, 162–175.  
852 <https://doi.org/10.1016/j.heares.2017.06.012>
- 853 Glodzik-Sobanska, L., Reisberg, B., Santi, S. D., Babb, J. S., Pirraglia, E., Rich, K. E., Brys, M., & Leon, M.  
854 J. de. (2007). Subjective Memory Complaints: Presence, Severity and Future Outcome in  
855 Normal Older Subjects. *Dementia and Geriatric Cognitive Disorders*, *24*(3), 177–184.  
856 <https://doi.org/10.1159/000105604>
- 857 Gordon-Salant, S., & Fitzgibbons, P. J. (2001). Sources of age-related recognition difficulty for time-  
858 compressed speech. *Journal of Speech, Language, and Hearing Research*, *44*(4), 709–719.
- 859 Hickok, G., & Poeppel, D. (2007). The cortical organization of speech processing. *Nature Reviews*  
860 *Neuroscience*, *8*(5), 393–402.
- 861 Hughes, C. P., Berg, L., Danziger, W. L., Coben, L. A., & Martin, R. L. (1982). A new clinical scale for the  
862 staging of dementia. *The British Journal of Psychiatry: The Journal of Mental Science*, *140*, 566–  
863 572. <https://doi.org/10.1192/bjp.140.6.566>
- 864 Idrizbegovic, E., Hederstierna, C., Dahlquist, M., Kämpfe Nordström, C., Jelic, V., & Rosenhall, U. (2011).  
865 Central auditory function in early Alzheimer’s disease and in mild cognitive impairment. *Age*  
866 *and Ageing*, *40*(2), 249–254.

- 867 International Organization for Standardization (ISO). (2017). *ISO 7029:2017 Acoustics—Statistical*  
868 *distribution of hearing thresholds related to age and gender*. International Organization of  
869 Standards. <https://www.iso.org/standard/42916.html>
- 870 Jessen, F., Amariglio, R. E., van Boxtel, M., Breteler, M., Ceccaldi, M., Chételat, G., Dubois, B., Dufouil,  
871 C., Ellis, K. A., van der Flier, W. M., Glodzik, L., van Harten, A. C., de Leon, M. J., McHugh, P.,  
872 Mielke, M. M., Molinuevo, J. L., Mosconi, L., Osorio, R. S., Perrotin, A., ... Subjective Cognitive  
873 Decline Initiative (SCD-I) Working Group. (2014). A conceptual framework for research on  
874 subjective cognitive decline in preclinical Alzheimer's disease. *Alzheimer's & Dementia: The*  
875 *Journal of the Alzheimer's Association*, 10(6), 844–852.  
876 <https://doi.org/10.1016/j.jalz.2014.01.001>
- 877 Jessen, F., Wiese, B., Bachmann, C., Eifflaender-Gorfer, S., Haller, F., Kölsch, H., Luck, T., Mösch, E., van  
878 den Bussche, H., Wagner, M., & others. (2010). Prediction of dementia by subjective memory  
879 impairment: Effects of severity and temporal association with cognitive impairment. *Archives*  
880 *of General Psychiatry*, 67(4), 414–422.
- 881 Joannis, M. F., & Gati, J. S. (2003). Overlapping neural regions for processing rapid temporal cues in  
882 speech and nonspeech signals. *NeuroImage*, 19(1), 64–79.
- 883 Kuperberg, G. R., Holcomb, P. J., Sitnikova, T., Greve, D., Dale, A. M., & Caplan, D. (2003). Distinct  
884 Patterns of Neural Modulation during the Processing of Conceptual and Syntactic Anomalies.  
885 *Journal of Cognitive Neuroscience*, 15(2), 272–293.  
886 <https://doi.org/10.1162/089892903321208204>
- 887 Leff, A. P., Schofield, T. M., Crinion, J. T., Seghier, M. L., Grogan, A., Green, D. W., & Price, C. J. (2009).  
888 The left superior temporal gyrus is a shared substrate for auditory short-term memory and  
889 speech comprehension: Evidence from 210 patients with stroke. *Brain*, 132(12), 3401–3410.  
890 <https://doi.org/10.1093/brain/awp273>
- 891 Li, K. Z. H., & Lindenberger, U. (2002). Relations between aging sensory/sensorimotor and cognitive  
892 functions. *Neuroscience and Biobehavioral Reviews*, 26(7), 777–783.  
893 [https://doi.org/10.1016/s0149-7634\(02\)00073-8](https://doi.org/10.1016/s0149-7634(02)00073-8)
- 894 Liberman, M. C., & Kujawa, S. G. (2017). Cochlear synaptopathy in acquired sensorineural hearing loss:  
895 Manifestations and mechanisms. *Hearing Research*, 349, 138–147.  
896 <https://doi.org/10.1016/j.heares.2017.01.003>
- 897 Liem, F., Mérillat, S., Bezzola, L., Hirsiger, S., Philipp, M., Madhyastha, T., & Jäncke, L. (2015). Reliability  
898 and statistical power analysis of cortical and subcortical FreeSurfer metrics in a large sample  
899 of healthy elderly. *NeuroImage*, 108, 95–109.  
900 <https://doi.org/10.1016/j.neuroimage.2014.12.035>
- 901 Lin, F. R., & Albert, M. (2014). Hearing loss and dementia—Who is listening? *Aging & Mental Health*,  
902 18(6), 671–673. <https://doi.org/10.1080/13607863.2014.915924>
- 903 Lin, F. R., Ferrucci, L., An, Y., Goh, J. O., Doshi, J., Metter, E. J., Davatzikos, C., Kraut, M. A., & Resnick,  
904 S. M. (2014). Association of hearing impairment with brain volume changes in older adults.  
905 *NeuroImage*, 90, 84–92. <https://doi.org/10.1016/j.neuroimage.2013.12.059>
- 906 Lin, F. R., Ferrucci, L., Jeffrey, E., An, Y., Zonderman, A. B., & Resnick, S. M. (2011). Hearing loss and  
907 cognition in the Baltimore Longitudinal Study of Aging. *Neuropsychology*, 25(6), 763–770.  
908 <https://doi.org/10.1037/a0024238>
- 909 Lin, F. R., Metter, E. J., O'Brien, R. J., Resnick, S. M., Zonderman, A. B., & Ferrucci, L. (2011). Hearing  
910 loss and incident dementia. *Archives of Neurology*, 68(2), 214–220. Scopus.  
911 <https://doi.org/10.1001/archneurol.2010.362>
- 912 Lindenberger, U., & Baltes, P. B. (1994). Sensory Functioning and Intelligence in Old Age: A Strong  
913 Connection. *Psychology and Aging*, 9(3), 339–355.
- 914 Livingston, G., Huntley, J., Sommerlad, A., Ames, D., Ballard, C., Banerjee, S., Brayne, C., Burns, A.,  
915 Cohen-Mansfield, J., Cooper, C., Costafreda, S. G., Dias, A., Fox, N., Gitlin, L. N., Howard, R.,  
916 Kales, H. C., Kivimäki, M., Larson, E. B., Ogunniyi, A., ... Mukadam, N. (2020). Dementia  
917 prevention, intervention, and care: 2020 report of the Lancet Commission. *The Lancet*,  
918 396(10248), 413–446. [https://doi.org/10.1016/S0140-6736\(20\)30367-6](https://doi.org/10.1016/S0140-6736(20)30367-6)

- 919 Livingston, G., Sommerlad, A., Orgeta, V., Costafreda, S. G., Huntley, J., Ames, D., Ballard, C., Banerjee,  
920 S., Burns, A., Cohen-Mansfield, J., Cooper, C., Fox, N., Gitlin, L. N., Howard, R., Kales, H. C.,  
921 Larson, E. B., Ritchie, K., Rockwood, K., Sampson, E. L., ... Mukadam, N. (2017). Dementia  
922 prevention, intervention, and care. *The Lancet*, *390*(10113), 2673–2734.  
923 [https://doi.org/10.1016/S0140-6736\(17\)31363-6](https://doi.org/10.1016/S0140-6736(17)31363-6)
- 924 Mathers, C., Fat, D. M., Boerma, J. T., & World Health Organization (Eds.). (2008). *The global burden of*  
925 *disease: 2004 update*. World Health Organization.
- 926 McCoy, S. L., Tun, P. A., Cox, L. C., Colangelo, M., Stewart, R. A., & Wingfield, A. (2005). Hearing loss  
927 and perceptual effort: Downstream effects on older adults' memory for speech. *The Quarterly*  
928 *Journal of Experimental Psychology Section A*, *58*(1), 22–33.  
929 <https://doi.org/10.1080/02724980443000151>
- 930 McKhann, G. M., Knopman, D. S., Chertkow, H., Hyman, B. T., Jack, C. R., Kawas, C. H., Klunk, W. E.,  
931 Koroshetz, W. J., Manly, J. J., Mayeux, R., Mohs, R. C., Morris, J. C., Rossor, M. N., Scheltens, P.,  
932 Carrillo, M. C., Thies, B., Weintraub, S., & Phelps, C. H. (2011). The diagnosis of dementia due  
933 to Alzheimer's disease: Recommendations from the National Institute on Aging-Alzheimer's  
934 Association workgroups on diagnostic guidelines for Alzheimer's disease. *Alzheimer's &*  
935 *Dementia: The Journal of the Alzheimer's Association*, *7*(3), 263–269.  
936 <https://doi.org/10.1016/j.jalz.2011.03.005>
- 937 Merten, N., Fischer, M. E., Tweed, T. S., Breteler, M. M. B., & Cruickshanks, K. J. (2019). Associations of  
938 Hearing Sensitivity, Higher-order Auditory Processing, and Cognition over Time in Middle-aged  
939 Adults. *The Journals of Gerontology. Series A, Biological Sciences and Medical Sciences*.  
940 <https://doi.org/10.1093/gerona/glz189>
- 941 Metzler-Baddeley, C., Jones, D. K., Steventon, J., Westacott, L., Aggleton, J. P., & O'Sullivan, M. J. (2012).  
942 Cingulum Microstructure Predicts Cognitive Control in Older Age and Mild Cognitive  
943 Impairment. *Journal of Neuroscience*, *32*(49), 17612–17619.  
944 <https://doi.org/10.1523/JNEUROSCI.3299-12.2012>
- 945 Meyer, M., Alter, K., Friederici, A. D., Lohmann, G., & von Cramon, D. Y. (2002). Functional MRI reveals  
946 brain regions mediating slow prosodic modulations in spoken sentences. *HBM*, *17*, 73–88.
- 947 Mills, J., Schmiedt, R., Schulte, B., & Dubno, J. (2006). Age-Related Hearing Loss: A Loss of Voltage, Not  
948 Hair Cells. *Seminars in Hearing*, *27*, 228–236. <https://doi.org/10.1055/s-2006-954849>
- 949 Möttönen, R., Krause, C. M., Tiippana, K., & Sams, M. (2002). Processing of changes in visual speech in  
950 the human auditory cortex. *Brain Research*, *13*(3), 417–425.
- 951 Nasreddine, Z. S., Phillips, N. A., Bédirian, V., Charbonneau, S., Whitehead, V., Collin, I., Cummings, J.  
952 L., & Chertkow, H. (2005). The Montreal Cognitive Assessment, MoCA: A brief screening tool  
953 for mild cognitive impairment. *Journal of the American Geriatrics Society*, *53*(4), 695–699.  
954 <https://doi.org/10.1111/j.1532-5415.2005.53221.x>
- 955 Nordlund, A., Rolstad, S., Hellström, P., Sjögren, M., Hansen, S., & Wallin, A. (2005). The Goteborg MCI  
956 study: Mild cognitive impairment is a heterogeneous condition. *Journal of Neurology,*  
957 *Neurosurgery & Psychiatry*, *76*(11), 1485–1490. <https://doi.org/10.1136/jnnp.2004.050385>
- 958 Okely, J. A., Akeroyd, M. A., Allerhand, M., Starr, J. M., & Deary, I. J. (2019). Longitudinal associations  
959 between hearing loss and general cognitive ability: The Lothian Birth Cohort 1936. *Psychology*  
960 *and Aging*, *34*(6), 766–779. <https://doi.org/10.1037/pag0000385>
- 961 Omata, Y., Tharasegaran, S., Lim, Y.-M., Yamasaki, Y., Ishigaki, Y., Tatsuno, T., Maruyama, M., & Tsuda,  
962 L. (2016). Expression of amyloid- $\beta$  in mouse cochlear hair cells causes an early-onset auditory  
963 defect in high-frequency sound perception. *Aging*, *8*(3), 427–439.  
964 <https://doi.org/10.18632/aging.100899>
- 965 Osler, M., Christensen, G. T., Mortensen, E. L., Christensen, K., Garde, E., & Rosing, M. P. (2019).  
966 Hearing loss, cognitive ability, and dementia in men age 19–78 years. *European Journal of*  
967 *Epidemiology*, *34*(2), 125–130.
- 968 Peelle, J. E., & Wingfield, A. (2016). The Neural Consequences of Age-Related Hearing Loss. *Trends in*  
969 *Neurosciences*, *39*(7), 486–497. <https://doi.org/10.1016/j.tins.2016.05.001>

- 970 Pichora-Fuller, M. K., Alain, C., & Schneider, B. A. (2017). Older Adults at the Cocktail Party. In J. C.  
971 Middlebrooks, J. Z. Simon, A. N. Popper, & R. R. Fay (Eds.), *The Auditory System at the Cocktail*  
972 *Party* (Springer Handbook of Auditory Research, pp. 227–259). Springer.  
973 [https://doi.org/10.1007/978-3-319-51662-2\\_9](https://doi.org/10.1007/978-3-319-51662-2_9)
- 974 Pichora-Fuller, M. K., Mick, P., & Reed, M. (2015). Hearing, cognition, and healthy aging: Social and  
975 public health implications of the links between age-related declines in hearing and cognition.  
976 *Seminars in Hearing, 36*, 122–139.
- 977 Pini, L., Pievani, M., Bocchetta, M., Altomare, D., Bosco, P., Cavedo, E., Galluzzi, S., Marizzoni, M., &  
978 Frisoni, G. B. (2016). Brain atrophy in Alzheimer’s Disease and aging. *Ageing Research Reviews,*  
979 *30*, 25–48. <https://doi.org/10.1016/j.arr.2016.01.002>
- 980 Poeppel, D., Guillemin, A., Thompson, J., Fritz, J., Bavelier, D., & Braun, A. R. (2004). Auditory lexical  
981 decision, categorical perception, and FM direction discrimination differentially engage left and  
982 right auditory cortex. *Neuropsychologia, 42*(2), 183–200.  
983 <https://doi.org/10.1016/j.neuropsychologia.2003.07.010>
- 984 Profant, O., Škoch, A., Balogová, Z., Tintěra, J., Hlinka, J., & Syka, J. (2014). Diffusion tensor imaging and  
985 MR morphometry of the central auditory pathway and auditory cortex in aging. *Neuroscience,*  
986 *260*, 87–97. <https://doi.org/10.1016/j.neuroscience.2013.12.010>
- 987 Pronk, M., Lissenberg-Witte, B. I., van der Aa, H. P. A., Comijs, H. C., Smits, C., Lemke, U., Zekveld, A.  
988 A., & Kramer, S. E. (2019). Longitudinal Relationships Between Decline in Speech-in-Noise  
989 Recognition Ability and Cognitive Functioning: The Longitudinal Aging Study Amsterdam.  
990 *Journal of Speech, Language, and Hearing Research, 62*(4S), 1167–1187.  
991 [https://doi.org/10.1044/2018\\_JSLHR-H-ASCC7-18-0120](https://doi.org/10.1044/2018_JSLHR-H-ASCC7-18-0120)
- 992 Quaranta, N., Coppola, F., Casulli, M., Barulli, O., Lanza, F., Tortelli, R., Capozzo, R., Leo, A., Tursi, M.,  
993 Grasso, A., Solfrizzi, V., Sobbà, C., & Logroscino, G. (2014). The Prevalence of Peripheral and  
994 Central Hearing Impairment and Its Relation to Cognition in Older Adults. *Audiology and*  
995 *Neurotology, 19*, 10–14. <https://doi.org/10.1159/000371597>
- 996 Raina, P. S., Wolfson, C., Kirkland, S. A., Griffith, L. E., Oremus, M., Patterson, C., Tuokko, H., Penning,  
997 M., Balion, C. M., Hogan, D., Wister, A., Payette, H., Shannon, H., & Brazil, K. (2009). The  
998 Canadian longitudinal study on aging (CLSA). *Canadian Journal on Aging = La Revue*  
999 *Canadienne Du Vieillissement, 28*(3), 221–229. <https://doi.org/10.1017/S0714980809990055>
- 1000 Rakic, P. (1988). Specification of cerebral cortical areas. *Science, 241*(4862), 170–176.
- 1001 Rakic, P. (1995). A small step for the cell, a giant leap for mankind: A hypothesis of neocortical  
1002 expansion during evolution. *Trends in Neuroscience, 18*(9), 383–388.
- 1003 Ray, J., Popli, G., & Fell, G. (2018). Association of cognition and age-related hearing impairment in the  
1004 english longitudinal study of ageing. *JAMA Otolaryngology–Head & Neck Surgery, 144*(10),  
1005 876–882.
- 1006 Reisberg, B., Shulman, M. B., Torossian, C., Leng, L., & Zhu, W. (2010). Outcome over seven years of  
1007 healthy adults with and without subjective cognitive impairment. *Alzheimer’s & Dementia,*  
1008 *6*(1), 11–24. <https://doi.org/10.1016/j.jalz.2009.10.002>
- 1009 Ren, F., Ma, W., Li, M., Sun, H., Xin, Q., Zong, W., Chen, W., Wang, G., Gao, F., & Zhao, B. (2018). Gray  
1010 Matter Atrophy Is Associated With Cognitive Impairment in Patients With Presbycusis: A  
1011 Comprehensive Morphometric Study. *Frontiers in Neuroscience, 12.*  
1012 <https://doi.org/10.3389/fnins.2018.00744>
- 1013 Reuter, M., Rosas, H. D., & Fischl, B. (2010). Highly accurate inverse consistent registration: A robust  
1014 approach. *NeuroImage, 53*(4), 1181–1196.
- 1015 Rigters, S. C., Bos, D., Metselaar, M., Roshchupkin, G. V., Baatenburg de Jong, R. J., Ikram, M. A.,  
1016 Vernooij, M. W., & Goedegebure, A. (2017). Hearing Impairment Is Associated with Smaller  
1017 Brain Volume in Aging. *Frontiers in Aging Neuroscience, 9,* 2.  
1018 <https://doi.org/10.3389/fnagi.2017.00002>
- 1019 Rigters, S. C., Cremers, L. G. M., Ikram, M. A., van der Schroeff, M. P., de Groot, M., Roshchupkin, G. V.,  
1020 Niessen, W. J. N., Baatenburg de Jong, R. J., Goedegebure, A., & Vernooij, M. W. (2018). White-  
1021 matter microstructure and hearing acuity in older adults: A population-based cross-sectional

- 1022 DTI study. *Neurobiology of Aging*, 61, 124–131.  
1023 <https://doi.org/10.1016/j.neurobiolaging.2017.09.018>
- 1024 Roberts, R., & Knopman, D. S. (2013). Classification and Epidemiology of MCI. *Clinics in Geriatric*  
1025 *Medicine*, 29(4), 753–772. <https://doi.org/10.1016/j.cger.2013.07.003>
- 1026 Rönnerberg, J., Lunner, T., Zekveld, A., Sörqvist, P., Danielsson, H., Lyxell, B., Dahlström, O., Signoret, C.,  
1027 Stenfelt, S., Pichora-Fuller, M. K., & Rudner, M. (2013). The Ease of Language Understanding  
1028 (ELU) model: Theoretical, empirical, and clinical advances. *Frontiers in Systems Neuroscience*,  
1029 7, 31. <https://doi.org/10.3389/fnsys.2013.00031>
- 1030 Rönnerberg, J., Rudner, M., Foo, C., & Lunner, T. (2008). Cognition counts: A working memory system for  
1031 ease of language understanding (ELU). *International Journal of Audiology*, 47, 99–105.  
1032 <https://doi.org/10.1080/14992020802301167>
- 1033 Rosas, H. D., Liu, A. K., Hersch, S., Glessner, M., Ferrante, R. J., Salat, D. H., van der Kouwe, A., Jenkins,  
1034 B. G., Dale, A. M., & Fischl, B. (2002). Regional and progressive thinning of the cortical ribbon  
1035 in Huntington’s disease. *Neurology*, 58, 695–701.
- 1036 Rudner, M., Seeto, M., Keidser, G., Johnson, B., & Rönnerberg, J. (2019). Poorer speech reception  
1037 threshold in noise is associated with lower brain volume in auditory and cognitive processing  
1038 regions. *Journal of Speech, Language, and Hearing Research*, 62(4S), 1117–1130.
- 1039 Salat, D. H., Buckner, R. L., Snyder, A. Z., Greve, D. N., Desikan, R. S., Busa, E., Morris, J. C., Dale, A. M.,  
1040 & Fischl, B. (2004). Thinning of the Cerebral Cortex in Aging. *Cerebral Cortex*, 14(7), 721–730.
- 1041 Sanchez, V. A., Arnold, M. L., Reed, N. S., Oree, P. H., Matthews, C. R., Clock Eddins, A., Lin, F. R., &  
1042 Chisolm, T. H. (in press). The Hearing Intervention for the Aging and Cognitive Health  
1043 Evaluation in Elders Randomized Control Trial: Manualization and Feasibility Study. *Ear and*  
1044 *Hearing*. <https://doi.org/10.1097/AUD.0000000000000858>
- 1045 Schermuly, I., Fellgiebel, A., Wagner, S., Yakushev, I., Stoeter, P., Schmitt, R., Knickenberg, R. J.,  
1046 Bleichner, F., & Beutel, M. E. (2010). Association between cingulum bundle structure and  
1047 cognitive performance: An observational study in major depression. *European Psychiatry*,  
1048 25(6), 355–360. <https://doi.org/10.1016/j.eurpsy.2010.05.001>
- 1049 Ségonne, F., Dale, A. M., Busa, E., Glessner, M., Salat, D., Hahn, H. K., & Fischl, B. (2004). A hybrid  
1050 approach to the skull stripping problem in MRI. *NeuroImage*, 22(3), 1060–1075.
- 1051 Sherif, T., Rioux, P., Rousseau, M.-E., Kassis, N., Beck, N., Adalat, R., Das, S., Glatard, T., & Evans, A. C.  
1052 (2014). CBRAIN: A web-based, distributed computing platform for collaborative neuroimaging  
1053 research. *Frontiers in Neuroinformatics*, 8. <https://doi.org/10.3389/fninf.2014.00054>
- 1054 Sinha, U. K., Hollen, K. M., Rodriguez, R., & Miller, C. A. (1993). Auditory system degeneration in  
1055 Alzheimer’s disease. *Neurology*, 43(4), 779–785.
- 1056 Slachevsky, A., Barraza, P., Hornberger, M., Muñoz-Neira, C., Flanagan, E., Henríquez, F., Bravo, E.,  
1057 Farías, M., & Delgado, C. (2018). Neuroanatomical Comparison of the “Word” and “Picture”  
1058 Versions of the Free and Cued Selective Reminding Test in Alzheimer’s Disease. *Journal of*  
1059 *Alzheimer’s Disease*, 61(2), 589–600. <https://doi.org/10.3233/JAD-160973>
- 1060 Tulsky, D. S., Chiaravalloti, N. D., Palmer, B. W., & Chelune, G. J. (2003). Chapter 3 - The Wechsler  
1061 Memory Scale, Third Edition: A New Perspective. In D. S. Tulsky, D. H. Saklofske, R. K. Heaton,  
1062 R. Bornstein, M. F. Ledbetter, G. J. Chelune, R. J. Ivnik, & A. Prifitera (Eds.), *Clinical*  
1063 *Interpretation of the WAIS-III and WMS-III* (pp. 93–139). Academic Press.  
1064 <https://doi.org/10.1016/B978-012703570-3/50007-9>
- 1065 Tuwaig, M., Savard, M., Jutras, B., Poirier, J., Collins, D. L., Rosa-Neto, P., Fontaine, D., Breitner, J. C. S.,  
1066 & for the PREVENT-AD Research Group. (2017). Deficit in Central Auditory Processing as a  
1067 Biomarker of Pre-Clinical Alzheimer’s Disease. *Journal of Alzheimer’s Disease*, 60(4), 1–12.  
1068 <https://doi.org/10.3233/JAD-170545>
- 1069 Uchida, Y., Nishita, Y., Kato, T., Iwata, K., Sugiura, S., Suzuki, H., Sone, M., Tange, C., Otsuka, R., Ando,  
1070 F., Shimokata, H., & Nakamura, A. (2018). Smaller Hippocampal Volume and Degraded  
1071 Peripheral Hearing Among Japanese Community Dwellers. *Frontiers in Aging Neuroscience*,  
1072 10(319). <https://doi.org/10.3389/fnagi.2018.00319>



- 1073 van Oijen, M., de Jong, F. J., Hofman, A., Koudstaal, P. J., & Breteler, M. M. B. (2007). Subjective  
1074 memory complaints, education, and risk of Alzheimer's disease. *Alzheimer's & Dementia*, *3*(2),  
1075 92–97. <https://doi.org/10.1016/j.jalz.2007.01.011>
- 1076 Vannson, N., James, C., Fraysse, B., Strelnikov, K., Barone, P., Deguine, O., & Marx, M. (2015). Quality  
1077 of life and auditory performance in adults with asymmetric hearing loss. *Audiology & Neuro-*  
1078 *Otology*, *20*, 38–43. <https://doi.org/10.1159/000380746>
- 1079 Vigneau, M., Beaucousin, V., Hervé, P., Jobard, G., Petit, L., Crivello, F., Mellet, E., Zago, L. M. B., &  
1080 Tzourio-Mazoyer, N. (2011). What is right-hemisphere contribution to phonological, lexico-  
1081 semantic, and sentence processing? Insights from a meta-analysis. *NeuroImage*, *54*, 577–593.
- 1082 Voevodskaya, O., Simmons, A., Nordenskjöld, R., Kullberg, J., Ahlström, H., Lind, L., Wahlund, L.-O.,  
1083 Larsson, E.-M., & Westman, E. (2014). The effects of intracranial volume adjustment  
1084 approaches on multiple regional MRI volumes in healthy aging and Alzheimer's disease.  
1085 *Frontiers in Aging Neuroscience*, *6*. <https://doi.org/10.3389/fnagi.2014.00264>
- 1086 Wang, S.-E., & Wu, C.-H. (2015). Physiological and Histological Evaluations of the Cochlea between  
1087 3xTg-AD Mouse Model of Alzheimer's Diseases and R6/2 Mouse Model of Huntington's  
1088 Diseases. *The Chinese Journal of Physiology*, *58*(6), 359–366.  
1089 <https://doi.org/10.4077/CJP.2015.BAD334>
- 1090 Wong, P. C. M., Jin, J. X., Gunasekera, G. M., Abel, R., Lee, E. R., & Dhar, S. (2009). Aging and cortical  
1091 mechanisms of speech perception in noise. *Neuropsychologia*, *47*(3), 693–703.  
1092 <https://doi.org/10.1016/j.neuropsychologia.2008.11.032>
- 1093 Xu, W., Zhang, C., Li, J.-Q., Tan, C.-C., Cao, X.-P., Tan, L., Yu, J.-T., & Alzheimer's Disease Neuroimaging  
1094 Initiative. (2019). Age-related hearing loss accelerates cerebrospinal fluid tau levels and brain  
1095 atrophy: A longitudinal study. *Aging*, *11*(10), 3156–3169.  
1096 <https://doi.org/10.18632/aging.101971>
- 1097 Zekveld, A. A., Kramer, S. E., & Festen, J. M. (2011). Cognitive Load During Speech Perception in Noise:  
1098 The Influence of Age, Hearing Loss, and Cognition on the Pupil Response. *Ear and Hearing*,  
1099 *32*(4), 498. <https://doi.org/10.1097/AUD.0b013e31820512bb>
- 1100 Zijdenbos, A. P., Forghani, R., & Evans, A. C. (2002). Automatic “pipeline” analysis of 3-D MRI data for  
1101 clinical trials: Application to multiple sclerosis. *IEEE Transactions on Medical Imaging*, *21*(10),  
1102 1280–1291. <https://doi.org/10.1109/TMI.2002.806283>
- 1103