

1 **TITLE: A multiplex microsphere IgG assay for SARS-CoV-2 using ACE2-mediated inhibition as a**
2 **surrogate for neutralization**

3 **AUTHORS**

4 Andrew Cameron¹, Claire A. Porterfield², Larry D. Byron¹, Jiong Wang³, Zachary Pearson¹,
5 Jessica L. Bohrhunter¹, Anthony B. Cardillo², Lindsay Ryan-Muntz¹, Ryan A. Sorensen¹, Mary T.
6 Caserta^{4,5}, Steven Angeloni⁶, Dwight J. Hardy^{1,7}, Martin S. Zand³, Nicole D. Pecora^{1,7}

7 **AFFILIATIONS**

8 ¹ University of Rochester Medical Center, Clinical Microbiology, Department of Pathology and
9 Laboratory Medicine, Rochester, NY, 14623.

10 ² University of Rochester Medical Center, Department of Pathology and Laboratory Medicine,
11 Rochester, NY, 14623.

12 ³ University of Rochester Medical Center, Department of Medicine, Nephrology, Rochester, NY,
13 14642.

14 ⁴ University of Rochester Medical Center, Department of Pediatrics, Rochester, NY, 14642.

15 ⁵ University of Rochester Medical Center, Department of Medicine, Infectious Diseases,
16 Rochester, NY, 14642.

17 ⁶ Luminex Corporation, Austin, TX, 78727.

18 ⁷ University of Rochester Medical Center, Department of Microbiology and Immunology,
19 Rochester, NY, 14642.

20 **RUNNING TITLE**

21 SARS-CoV-2 multi-antigen serological profiling

22

23 **ABSTRACT**

24 The COVID-19 pandemic has highlighted the challenges inherent to the serological detection of
25 a novel pathogen such as SARS-CoV-2. Serological tests can be used diagnostically and for
26 surveillance, but their usefulness depends on their throughput, sensitivity and specificity. Here,
27 we describe a multiplex fluorescent microsphere-based assay, 3Flex, that can detect antibodies
28 to three major SARS-CoV-2 antigens—spike (S) protein, the spike ACE2 receptor-binding domain
29 (RBD), and nucleocapsid (NP). Specificity was assessed using 213 pre-pandemic samples.
30 Sensitivity was measured and compared to the Abbott™ ARCHITECT™ SARS-CoV-2 IgG assay
31 using serum samples from 125 unique patients equally binned ($n = 25$) into 5 time intervals (≤ 5 ,
32 6 to 10, 11 to 15, 16 to 20, and ≥ 21 days from symptom onset). With samples obtained at ≤ 5
33 days from symptom onset, the 3Flex assay was more sensitive (48.0% vs. 32.0%), but the two
34 assays performed comparably using serum obtained ≥ 21 days from symptom onset. A larger
35 collection ($n = 534$) of discarded sera was profiled from patients ($n = 140$) whose COVID-19
36 course was characterized through chart review. This revealed the relative rise, peak (S, 23.8;
37 RBD, 23.6; NP, 16.7; in days from symptom onset), and decline of the antibody response.
38 Considerable interperson variation was observed with a subset of extensively sampled ICU
39 patients. Using soluble ACE2, inhibition of antibody binding was demonstrated for S and RBD,
40 and not for NP. Taken together, this study described the performance of an assay built on a
41 flexible and high-throughput serological platform that proved adaptable to the emergence of a
42 novel infectious agent.

43 INTRODUCTION

44

45 The β -coronavirus SARS-CoV-2 is the causative agent of the coronavirus disease 2019 (COVID-19)
46 pandemic. As SARS-CoV-2 continues to move through the global population, serological testing
47 is vitally important to understand both the degree of spread (seroprevalence) and the
48 characteristics of the immune response in terms of antibody kinetics, dominant antigens, and
49 immunological significance.

50

51 A number of antibody tests have been granted emergency use authorization (EUA) by the FDA ¹.
52 These include rapid lateral flow devices (LFAs), enzyme-linked immunoassays (ELISAs),
53 chemiluminescent immunoassays (CMIA), and fluorescence microsphere immunoassays
54 (FMIA). The majority of these tests are qualitative and typically target either the SARS-CoV-2
55 spike (S) or nucleocapsid (NP) proteins. Likewise, these same targets were of interest in the
56 development of serological assays for SARS-CoV-1 ²⁻⁶.

57

58 The S protein is a ~180 kDa glycosylated homotrimer that extends from the viral surface and
59 initiates host cell entry ⁷. The extracellular region of S is organized into S1 and S2, with S1
60 comprising the outermost region and containing the receptor binding domain (RBD) for the
61 human ACE2 receptor ⁸⁻¹¹. Anti-S antibodies can neutralize SARS-CoV-2 in cell culture ^{7,8,12-15}, as
62 can anti-S antibodies against SARS-CoV-1 ³. Thus, S and RBD are of great interest as targets for
63 both immunoassays and vaccines due to their interactions with the human host ¹⁶. As a
64 component of serological assays, S is incorporated as either the full extracellular domain (ECD),

65 the outermost S1 domain, or the receptor-binding domain (RBD). Additionally, the abundance
66 and antigenicity of NP have made it an attractive target for both diagnostic and vaccine work ¹⁷⁻
67 ¹⁹. NP has roles in viral replication, transcription, and packaging of the viral genome ^{20,21}.

68
69 Beyond exposure, questions surrounding the serological response to SARS-CoV-2 are becoming
70 more nuanced, and include long-term antibody kinetics, measuring anamnestic responses to
71 reinfection or vaccination, and assessment of plasma donors. For these, both qualitative and
72 quantitative/semi-quantitative serological assays that target multiple antigens and/or have the
73 ability to assess the neutralization potential of SARS-CoV-2 antibodies are of great interest. To
74 date, only a handful of assays with FDA EUA incorporate both the NP and S antigens, including
75 technologies such as LFAs (e.g. Assure COVID-19 IgG/IgM Rapid Test Device, CareStart COVID-19
76 IgM/IgG, Cellex qSARS-CoV-2 IgG/IgM Rapid Test), CLIAs (e.g. Diazyme DZ-Lite SARS-CoV-2
77 IgM/IgG, Vibrant COVID-19 Ab Assay), and FMIA (Luminex Inc. xMAP SARS-CoV-2 Multi-
78 Antigen IgG Assay) ¹. None of the current EUA assays incorporate an assessment of antibody-
79 mediated neutralization of SARS-CoV-2 S protein binding to the ACE2 receptor.

80
81 In the current study, we utilized a laboratory-developed FMIA designated SARS-CoV-2 IgG 3Flex
82 (3Flex) built on the Luminex FLEXMAP 3D[®] system for the simultaneous detection of antibodies
83 to the N, S, and RBD antigens. We assessed its performance using 534 serum samples from 140
84 SARS-CoV-2-infected individuals from both inpatient and outpatient settings. In addition, we
85 followed the serological response in a subset of individuals over time, and demonstrated

86 longitudinal patterns of antibody levels to each antigen alongside an assessment of
87 neutralization at different time points over the course of disease.

88

89 **MATERIALS AND METHODS**

90

91 **Clinical laboratory setting**

92

93 The UR Medicine Labs clinical microbiology laboratory in Rochester, NY provides diagnostic
94 services for institutionalized and ambulatory patients (serving several area hospitals, practices,
95 nursing homes, and urgent care providers). During the ongoing COVID-19 global pandemic,
96 diagnostic analyses for SARS-CoV-2 were provided for an expanded patient population in
97 Western NY. This study was approved by the University of Rochester Institutional Review Board
98 (RSRB STUDY00004836).

99

100 **Sample collection**

101

102 Residual serum specimens ($n = 534$) were collected at convenience in April 2020 from 140
103 unique patients (including outpatients, nursing home residents, and inpatients). All serum
104 specimens were obtained from symptomatic patients positive for SARS-CoV-2 nucleic acid
105 tested with RT-PCR-based assays (cobas® SARS-CoV-2 Test, Simplexa™ COVID-19 Direct, and
106 Xpert® Xpress SARS-CoV-2). Serum was held at 4°C until discard (7 days) or -80°C for long-term
107 storage. Additionally, pre-COVID-19 sera ($n = 125$) from 2019 were used for specificity testing

108 and validation, and included specimens positive for bacterial and viral infections (lyme, syphilis,
109 cytomegalovirus [CMV], Epstein-Barr virus [EBV], and other respiratory illnesses) and
110 autoimmune markers (antinuclear antigen [ANA], and rheumatoid factor).

111

112 **Chart review**

113

114 Patient charts were reviewed by at least two people from a four-person team, and
115 discrepancies were resolved by a third person. Information collected included patient
116 demographics (sex, age), clinical course (including the estimated date of symptom onset, days
117 of hospitalization, ICU admission, death), reported symptoms (including fever, cough, shortness
118 of breath), and comorbidities (including history of smoking, coronary artery disease, chronic
119 obstructive pulmonary disease [COPD], and diabetes). Given the need to assess for the
120 serological response within a known timeframe (days from symptom onset), all patients in this
121 study had symptomatic manifestations of COVID-19. Thus, days from symptom onset was
122 calculated using the collection date for each serum sample. Where possible, RT-PCR cycle
123 threshold (C_t) values from multiple RT-PCR tests were obtained and assessed alongside the
124 serological response for the patients included in this study.

125

126 **Multiplex SARS-CoV-2 IgG microsphere immunoassay development**

127

128 ***Antigens.*** The immunoassay was constructed using full-length SARS-CoV-2 NP protein (Cat.
129 Z03480-100), the extracellular domain (ECD) of the S protein (Cat. Z03481-100), and RBD (Cat.

130 Z03483-100), all purchased from GenScript Biotech Corporation, Piscataway, NJ. The S protein
131 (135 kDa; His tag & FLAG[®] tag) was expressed in *Sf9* insect cells, NP protein (46 kDa; His tag)
132 was expressed in *E. coli*, and RBD (30 kDa; His Tag) was obtained from expression in human cells.
133 The SARS-CoV-2 spike ECD and RBD are both reported to ‘bind with human ACE2 in functional
134 ELISA assay’ by the manufacturer. In addition to the viral antigens, two additional control beads
135 were included: an internal control bead on region 45 (IC45), and a bead coupled with human
136 IgG, as described in the next section.

137
138 **Microsphere-antigen coupling.** Protein coupling to magnetic microsphere beads was
139 performed according to the manufacturer’s recommendations using the xMAP[®] Antibody
140 Coupling (AbC) kit (Luminex, Austin, TX). The S protein was coupled at 10 pM, while NP and RBD
141 were coupled at 100 pM (i.e. equimolar). Beads were also coated with purified human IgG at
142 0.1 µg/ml (Cat. I2511, Sigma-Aldrich, Inc.). Coupled beads corresponded to bead regions 18 (S),
143 33 (RBD), 73 (NP), 45 (internal control; IC45), and 66 (human IgG). IgG coupling confirmation
144 was performed using serial dilutions of biotin-SP-conjugated Fcγ fragment-specific goat α-
145 human IgG (Cat. 109-065-098, Jackson ImmunoResearch Laboratories, Inc.) and streptavidin-R-
146 phycerythrin (PE) conjugate (SAPE, Cat. S21388, Thermo Fisher Scientific). SARS-CoV-2 antigen
147 coupling was confirmed serial dilutions of rabbit-derived antibodies directed against S (Cat.
148 NB100-56047) and NP (Cat. NB100-56049; Novus Biologicals, LLC, Centennial, CO) and detection
149 with PE-labelled goat α-rabbit IgG (H+L) cross-adsorbed secondary antibody (Cat. P2771MP,
150 Thermo Fisher Scientific).

151

152 **Assay procedure.** Serum was diluted to 1:2000 in PBS-TBN (PBS: 0.02%; Tween: 0.1%; BSA:
153 1%; Azide: 0.05%). The assay was performed by incubating a 5-plex bead mix delivering 2,500
154 beads for each bead region (IC45, each CoV antigen bead, and the IgG-coupled bead) in a 50 μ l
155 volume of PBS-TBN with 50 μ l of the diluted patient serum for 15 min at 37°C. Beads were
156 washed twice in 150 μ l of PBS-TBN with shaking for 2 minutes at 37°C using magnetic
157 separation. Washed beads were incubated with a mixture of 1:4500 biotin-SP-conjugated Fcy
158 fragment-specific goat α -human IgG and 1 μ g/ml SAPE for 15 min at 37°C. Beads were again
159 washed twice in 150 μ l of PBS-TBN with shaking for 2 minutes at 37°C and separated
160 magnetically. Beads were re-suspended in 100 μ l of PBS-TBN and analyzed on a FLEXMAP 3D®
161 instrument (Luminex, Austin, TX), which provides a measurement of the median fluorescence
162 intensity (MFI) for each analyte on each bead region. For each 96-well plate, patient sera was
163 tested alongside three PBS-TBN blank wells, an IgG-stripped sera control (Cat. IIGGDS100ML,
164 Innovative Research, Inc., Novi, MI), and two sera from patients positive for SARS-CoV-2 by RT-
165 PCR known to be of 'low' and 'high' positivity with respect to SARS-CoV-2 IgG serology (as
166 determined by the Abbott™ SARS-CoV-2 IgG assay).

167

168 **Comparator SARS-CoV-2 IgG testing**

169

170 Sera used in the validation of the 3Flex assay were tested in parallel according to the package
171 insert for the FDA Emergency Use Authorization (EUA) SARS-CoV-2 IgG assay on the Abbott™
172 ARCHITECT™ i2000SR platform. This assay detects the serological response to SARS-CoV-2 NP.

173

174 **Study design and analysis**

175

176 ***Multiplex SARS-CoV-2 IgG microsphere immunoassay validation.*** To establish the required
177 specificity of the assay, and for interference testing, MFI cut-off values were determined by
178 testing a total of 125 ‘pre-COVID’ sera. These comprised sera positive for ANA ($n = 20$),
179 rheumatoid factor ($n = 10$), lyme ($n = 10$), syphilis ($n = 10$), CMV ($n = 10$), EBV ($n = 10$), and non-
180 SARS-CoV-2 respiratory illnesses ($n = 55$). To examine assay performance, sera ($n = 125$) from
181 unique patients (i.e. $n = 125$) positive for SARS-CoV-2 nucleic acid and with a known date of
182 symptom onset were tested. These samples were randomly selected and binned into 5 time
183 intervals corresponding to ≤ 5 , 6 to 10, 11 to 15, 16 to 20, and ≥ 21 days from symptom onset.
184 Results were interpreted qualitatively and concordance was established with respect to the
185 Abbott™ SARS-CoV-2 IgG assay.

186

187 ***Serological profiling of SARS-CoV-2 infection.*** MFI values for each antigen from all tests ($n =$
188 534) were assessed with respect to days from symptom onset. MFI values and corresponding C_t
189 values were plotted in GraphPad Prism 8 with a smoothed curve (GraphPad Software, San
190 Diego, CA). Peak values for IgG responses were determined by area under the curve (AUC)
191 analyses. Because some patients were highly represented in the larger data set, a sub-set of
192 randomly selected serum specimens was used for MFI comparisons by time, and for
193 comparisons between select patient populations (i.e. between ICU-admitted and other
194 patients). Where possible, this sub-set included no more than 1 serum specimen assayed from
195 a unique patient for each of the 5 time intervals. This allowed 231 serological tests from 140

196 unique patients to be examined. Additionally, 9 extensively sampled patients were tested to
197 explore interperson (i.e. between patient) IgG responses and the precision of the assay with
198 repeated measures.

199
200 **ACE2 inhibition.** As a proxy for the detection of ‘neutralizing’ titers of antibodies to SARS-
201 CoV-2, the 5-plex bead mix was incubated with soluble recombinant human angiotensin-
202 converting enzyme 2 (ACE2) (Cat. 0192-30, Adipogen Corporation, San Diego, CA) for 2 minutes
203 at 37°C with shaking prior to the addition of sera. A doubling dilution series of ACE2 was used
204 to optimize the concentration needed to produce a ~50% loss of MFI value for sera tested with
205 and without ACE2. A concentration of 2 µg/ml was selected because MFI values for the spike
206 RBD were reduced by 50% in the majority of SARS-CoV-2 positive samples tested. ACE2
207 inhibition was also performed for the 9 extensively characterized patients, but only 1 randomly-
208 selected serum sample from each of the 5 time intervals was tested if possible. Inhibition
209 values—given as the residual MFI + ACE2 (%)—are calculated as the percentage of the MFI
210 value in the presence of ACE2 over the MFI value without ACE2.

211

212 **Statistical and graphical analysis**

213

214 Statistical calculations and plotting were performed in Prism 8 (GraphPad Software, San Diego,
215 CA). Fisher’s exact test was used for patient population comparisons. Unless otherwise
216 indicated, error bars indicate mean ± standard deviation.

217

218 **RESULTS**

219

220 **Multiplex SARS-CoV-2 IgG microsphere immunoassay validation**

221

222 ***Specificity***

223

224 Specificity was assessed using a set of 213 pre-COVID-19 sera. Serum samples were submitted
225 to the diagnostic laboratory between 10/1/2019 and 2/1/2020 and included those that were
226 negative for all analytes tested, as well as samples that were positive for syphilis, CMV,
227 EBV/Mono, rheumatoid factor, and Lyme disease (**Table 1**). This also included 55 samples taken
228 from patients within 60 days of an acute respiratory infection. All pre-COVID-19 sera were
229 designated as 'negative' and formed the basis of cut-off values to establish positive/negative
230 thresholds used to interpret subsequent testing. The MFI cut-off values for each antigen
231 exceeded 6 standard deviations of the mean of all negative samples included in this specificity
232 assessment.

233

234 ***Sensitivity***

235

236 Serum samples from patients with confirmed COVID-19 were categorized by days from
237 symptom onset (≤ 5 , 6 to 10, 11 to 15, 16 to 20, and ≥ 21 days; $n = 25$ each) and evaluated with
238 both the 3Flex assay and the Abbott™ ARCHITECT™ SARS-CoV-2 IgG assay (EUA) (**Table 2**). If any
239 of the 3Flex markers (S, RBD, NP) was positive then the overall interpretation of the assay was

240 positive. With serum obtained ≤ 5 days from symptom onset, the 3Flex assay demonstrated a
241 48.0% (12/25) positivity rate, compared to 32.0% for the ARCHITECT™ SARS-CoV-2 IgG assay
242 (8/25) (**Table 2**). In 3/4 of the discrepant samples, the 3Flex assay was positive due to the S
243 target alone, while in 1/4 all three targets were positive (**Table S1**). By 16 to 20 days from
244 symptom onset the two assays showed comparable positivity rates (92%) which were also
245 observed for samples obtained ≥ 21 days from symptom onset. Although the 3Flex assay is
246 reported with a positive or negative qualitative result, MFI values increased from an average of
247 2,305.88 (S), 1,168.40 (RBD), and 3,380.28 (NP) in the ≤ 5 days from symptom onset category to
248 24,859.64 (S), 14,963.76 (RBD), and 20,801.24 (NP) in the ≥ 21 days from symptom onset
249 category (**Table 2**).

250

251 **Serological profiling of SARS-CoV-2 infection**

252

253 *Characteristics of patient population*

254

255 All 140 unique patients profiled were positive for SARS-CoV-2 nucleic acid by RT-PCR. Of these,
256 65/140 (46.4%) were women and 75/140 (53.6%) were men (**Table 3**). Sixty-six patients were
257 admitted to an ICU, and there were 20 mortalities—with 16/20 (80%) being men. Nursing home
258 residents comprised 37/140 (26.4%) of the tested patients, and the average age of nursing
259 home residents was 82.6 and 76.0 years for women and men, respectively, compared to 63.4
260 and 64.1 years for other patient types (inpatient, outpatient) combined. The most frequently
261 reported symptoms were fever (women: 32/65, 49.2%; men: 51/75, 68.0%) and shortness of

262 breath (women: 34/65, 52.3%; men: 44/75; 58.7%). Gastrointestinal symptoms
263 (diarrhea/vomiting) were noted for 42/140 (30.0%) of patients (women: 16/65, 24.6%; men:
264 26/75, 34.7%). Ventilated patients comprised 47/140 (33.6%) of the population (women: 22/65,
265 33.8%; men: 25/75, 33.3%). The most frequently reported comorbidities included hypertension
266 (women: 45/65, 69.2%; men: 55/75, 73.3%), a history of smoking (women: 33/65, 50.8%; men:
267 44/75, 58.7%), and diabetes (women: 23/65, 35.4%; men: 33/75, 44.0%).

268

269 ***Serological response to SARS-CoV-2 S, RBD, and NP antigens***

270

271 MFI values corresponding to each antigen were measured for all sera tested ($n = 534$) and
272 analyzed with respect to days from symptom onset (**Figure 1B, Table 4**). The peak IgG response
273 to S and RBD antigens occurred on 23.8 days and 23.6 days from symptom onset, respectively.
274 The peak IgG response to NP was observed at 16.7 days from symptom onset. No test was
275 qualitatively interpreted as negative >28 days from symptom onset. Although MFIs for all
276 antigens decreased following the peak response, all seroconverted patients with at least one
277 test following a positive ($n = 59$) were interpreted as positive on subsequent tests with the
278 exception of three patients with discrepant findings. Two of these three patients were
279 mortalities with only limited sera available (i.e. two samples) from a narrow timeframe (<11
280 days from symptom onset). The serological response of the third discrepant patient (Patient H)
281 was profiled later (**Figure 2**).

282

283 Overall, 61/534 tests were interpreted as negative and 473/534 tests were interpreted as
284 positive (**Figure 1C, Data S1**). Twelve of 534 tests were interpreted as positive based on one
285 antigen MFI value exceeding the threshold for positivity (S: 9/12, 75%; RBD: 3/12, 25%; NP:
286 0/12, 0.0%). For 57 tests interpreted as positive based on two antigens, the frequency of
287 antigen pairs were S and RBD (52/57, 91.2%), S and NP (4/57, 7.0%), and RBD and NP (1/57,
288 1.8%). Single- and double-antigen positives occurred at a median of 5.5 and 8.0 days from
289 symptom onset, respectively. When allowing for only one test ($n = 231$) per unique patient ($n =$
290 140) in each time interval the IgG positivity rate was 53.4% when serum was collected ≤ 5 days
291 from symptom onset, and 96.1% when collected ≥ 21 days from symptom onset (**Table 3**).

292
293 C_t values ($n = 1,042$; 2 C_t values per RT-PCR test) were obtained from RT-PCR detection of SARS-
294 CoV-2 nucleic acid and compared to the serological response to S, RBD, and NP (**Figure 1D**).
295 Nucleic acid detection peaked (i.e. lowest average C_t values) at 4.6 days from symptom onset.
296 For tests conducted < 21 days from symptom onset 85.2% were positive and had a mean C_t
297 value of 26.3 ± 0.4 (SEM) (**Figure 1E**). In contrast, 47.8% tests conducted ≥ 21 days from
298 symptom onset were positive and had a mean C_t value of 33.4 ± 0.4 (SEM).

299

300 ***Serological response to SARS-CoV-2 in ICU-admitted patients***

301

302 Patient populations were assessed for differences in MFI values obtained for each SARS-CoV-2
303 antigen. Higher MFI values were observed for patients aged < 65 (vs. ≥ 65 , not shown), and for
304 those admitted to an ICU (**Figure 1F**). ICU-admitted patients demonstrated significantly higher

305 MFI values for all SARS-CoV-2 antigens at >21 days from symptom onset. ICU-admitted patients
306 (vs. not-admitted patients) were not appreciably different with respect to age (67.0 years vs.
307 68.9 years), sex (49.5% female vs. 46.9% female), or histories of smoking, cerebrovascular
308 disease, coronary artery disease, hypertension, diabetes, or asthma. Patients with histories of
309 chronic obstructive pulmonary disease (10/66 vs. 3/74, $P = 0.0383$, Fisher's exact test) and
310 obstructive sleep apnea (16/66 vs. 8/74, $P = 0.0438$) were more frequent in the ICU-admitted
311 patient population than in non-admitted individuals.

312

313 ***Inhibition of SARS-CoV-2 antibody binding to S and RBD using ACE2.***

314

315 To assess whether 3Flex could assay for antibodies that neutralize receptor binding, titrated
316 concentrations (0.0625 – 4 $\mu\text{g}/\text{mL}$) of ACE2 were incubated with the 5-plex beadmix prior to
317 addition of serum (**Figure 1G**). The addition of ACE2 resulted in loss of detection of S and RBD
318 antibodies, but not NP (**Figure 1H**). The 2 $\mu\text{g}/\text{mL}$ concentration of ACE2 was selected for the
319 following studies because it was capable of producing a >50% drop in anti-RBD IgG detection.
320 The residual MFI detected at 2 $\mu\text{g}/\text{mL}$ of ACE2 was $53.1\% \pm 8.0\%$, $43.5\% \pm 9.72\%$, and $98.6\% \pm$
321 4.7% , for S, RBD, and NP, respectively (mean \pm SD).

322

323 ***Longitudinal serological response to SARS-CoV-2 in extensively sampled individuals***

324

325 Nine patients (6 women, 3 men) were extensively sampled due to extended hospitalization (all
326 admitted to an ICU) for COVID-19. The IgG response to SARS-CoV-2 was explored in each of
327 these, alongside ACE2 inhibition testing (**Figure 2**). The average age of these patients was 67.3

328 years (range: 47.0 to 80.0 years). All of these patients survived their illness. All patients were
329 ventilated except for Patient I. There was a wide-ranging prevalence of comorbidities and
330 COVID-19 complications present in this group. These patients had histories notable for
331 hypertension (9/9), diabetes (7/9), smoking (5/9), kidney disease (7/9). Where available, C_t
332 values typically decreased or were undetectable following a peak IgG response. Highly variable
333 (MFI magnitude and kinetics) serological responses were observed for these individuals. In
334 addition, ACE2 inhibition was demonstrated to varying degrees for each patient, generally with
335 the greatest 'neutralization' observed for sera tested ≥ 21 days from symptom onset.
336 Neutralization was exclusive to S and RBD, with NP showing no significant inhibition. Despite
337 evidence of an IgG response, and having tested negative by RT-PCR, 4/9 patients subsequently
338 tested RT-PCR positive for SARS-CoV-2 on later follow-up testing.

339
340 **DISCUSSION**

341
342 In this work we have validated 3Flex as a multiplex fluorescent microsphere immunoassay to
343 qualitatively assess the IgG response to infection by SARS-CoV-2. We found that this assay
344 compared favorably with the Abbott™ ARCHITECT™ SARS-CoV-2 IgG assay when testing serum
345 from a diverse group of individuals with a spectrum of COVID-19 clinical presentations. The
346 overall profile of the IgG serological response in this collection revealed the initial and peak
347 responses for each SARS-CoV-2 antigen, timing of the decline in antibody levels, and correlation
348 with decline in C_t values (a proxy for viral load).

349

350 Through the early stages of the pandemic, the kinetics of the antibody response to SARS-CoV-2
351 were described using a variety of methodologies and antigenic targets. Although it is
352 challenging to directly compare results, the overall picture which emerges from the literature is
353 that most individuals develop IgM, IgA, and IgG responses at approximately 5-14 days post
354 symptom onset, though some can take up to 14-28 days²²⁻²⁵. In this study, we showed similar
355 kinetics. Across 534 tests from 140 individuals 48% of those with reported symptom onset
356 within the past 5 days had detectable IgG, but that number rose to 68% by days 6-10 and 92%
357 by days 16 to 20. Further, as the pandemic enters its ninth month since the first cases were
358 identified in the US, some studies have raised concerns over declining levels of SARS-CoV-2
359 antibodies and the potential ramifications for natural immunity and vaccine response²⁶. Among
360 the nine patients for who we had longitudinal samples, none of the individuals became
361 negative according to the qualitative interpretation of the assay. In addition, several individuals
362 who were tested at later time points (>50 days post symptom onset) also demonstrated lower
363 but still qualitatively positive results (data not shown). These findings are consistent with
364 serological data from Iceland which indicated that infected individuals remained seropositive
365 up to 4 months post-infection²⁷.

366
367 Whereas many serological assays for COVID-19 detect a single antigen, this assay incorporates S,
368 RBD, and NP. This feature may prove useful as it has the added flexibility to potentially
369 discriminate between the immune responses of infected or vaccinated people (albeit, a use
370 entirely dependent on the ultimate composition of upcoming SARS-CoV-2 vaccines). This multi-
371 target approach may also improve the sensitivity of the assay, since a positive result for any of

372 the antigens is interpreted as positive overall. We observed that ~15% of samples were positive
373 for one antigen but not another, though after 28 days from symptom onset the majority of
374 patients were positive for all antigens. Here, detection of S and RBD increased the sensitivity of
375 the 3Flex assay among some of the earlier samples (≤ 5 days from symptom onset) when
376 compared to the NP-only Abbott™ ARCHITECT™ SARS-CoV-2 IgG assay. Currently, there are
377 mixed reports concerning antigen specific dynamics of the antibody response, i.e. the relative
378 timing and duration of responses to one viral antigen versus another. Despite similar findings
379 reported by Liu et. al.²⁸, others have reported greater sensitivity at earlier time points using
380 single-target NP-based assays.²⁹

381
382 The kinetics of the antibody response were not appreciably different by demographic measures
383 such as age or sex. Higher MFI values were observed in patients admitted to the ICU as part of
384 their COVID-19 disease course. This association of higher antibody levels with disease severity
385 has been reported by others^{30,31}, though our data suggested that antigen-specific antibody
386 kinetics did not differ significantly between the two groups—i.e. in aggregate, peak responses
387 were observed at the same day from symptom onset.

388
389 A limitation of this study is its dependence on retrospective and remnant serum samples which
390 hindered longitudinal sampling. However, for a subset of nine individuals admitted to the ICU,
391 we had multiple samples that enabled us to track their antibody and viral load data over time.
392 This allowed us to look beyond the composite data (**in Figure 1B**) for a depiction of individual
393 responses (**Figure 2**). The longitudinal MFI values of these individual patients suggested a high

394 degree of interperson variation in terms of both kinetics and relative antigen responses. For
395 most of these nine patients the MFIs for anti-S antibodies were higher. This is despite the fact
396 that S protein was coupled to beads at only 10% of the molarity of RBD or NP. Thus, anti-S
397 antibodies potentially comprise a larger proportion of anti-SARS-CoV-2 antibodies. We
398 observed interperson and time (from symptom onset)-dependent variability in the ability of
399 soluble ACE2 to block the binding of anti-S and anti-RBD antibodies, an indirect measure of
400 neutralizing capability. In general, a trend towards greater neutralization over time from
401 symptom onset was observed. The ability to measure inhibition of signal with ACE2 may prove
402 useful to measure the effectiveness of, and discriminate between, the immune responses of
403 infected or vaccinated individuals. However, an important caveat is that it is unclear how *in*
404 *vitro* 'neutralization' performed in this manner translates to *in vivo* immunity.

405
406 In summary, the 3Flex assay described here is a versatile and robust method to measure
407 antibodies to the major antigens of SARS-CoV-2. Beyond the current pandemic, the xMAP
408 microsphere technology allows for rapid and flexible assay design, as well as straightforward
409 implementation. This provided a serological platform capable of responding to new and
410 emerging pathogens.

411

412 **FUNDING**

413

414 Funding from the Department of Pathology and Laboratory Medicine, University of Rochester
415 Medical Center supported this study. This study was also partially supported by the National

416 Institutes of Health Institute of Allergy, Immunology and Infectious Diseases grants R21
417 AI138500 and R01 AI129518 (MZ, JW) and the University of Rochester Clinical and Translational
418 Science Award UL1 TR002001 from the National Center for Advancing Translational Sciences of
419 the National Institutes of Health (MZ). The content is solely the responsibility of the authors and
420 does not necessarily represent the official views of the National Institutes of Health. None of
421 the above funders had any role in study design, data collection and analysis, decision to publish,
422 or preparation of the manuscript. SA is an employee of Luminex Corporation (Austin, TX).
423 Luminex had no role in study design, data collection and analysis, decision to publish, or
424 preparation of the manuscript. NDP received support from Luminex Corporation for the
425 purchase of reagents and supplies.

426

427 **ACKNOWLEDGMENTS**

428

429 We thank the UR Medicine Central Laboratory Clinical Microbiology for specimen collection and
430 serological testing.

431

432 **CONTRIBUTIONS**

433

434 AC and NP designed the study, selected sera, and performed statistical analyses. SA provided
435 technical expertise with assay design, reagent selection, and assay optimization. SA, AC, and NP
436 interpreted criteria for assay validation. MC provided sera from confirmed respiratory disease
437 infections for interference testing. JW and MZ provided technical expertise and additional

438 reagents. AC, CP, JB, ABC, and NP reviewed patient charts for demographic information and
439 COVID-19 histories. LB, ZP, AC, NP, and SA performed serological testing. DH and NP provided
440 laboratory resources. AC and NP analyzed data/results and wrote the first draft of the
441 manuscript. All authors participated in editing and reviewing the manuscript and approved the
442 final manuscript. All authors contributed to the article and approved the submitted version.

443 **REFERENCES**

444

445 1. FDA. EUA Authorized Serology Test Performance. [https://www.fda.gov/medical-](https://www.fda.gov/medical-devices/emergency-situations-medical-devices/eua-authorized-serology-test-performance)
446 [devices/emergency-situations-medical-devices/eua-authorized-serology-test-](https://www.fda.gov/medical-devices/emergency-situations-medical-devices/eua-authorized-serology-test-performance)
447 [performance](https://www.fda.gov/medical-devices/emergency-situations-medical-devices/eua-authorized-serology-test-performance). Accessed.

448 2. Meyer B, Drosten C, Muller MA. Serological assays for emerging coronaviruses:
449 challenges and pitfalls. *Virus research*. 2014;194:175-183.

450 3. Qiu M, Shi Y, Guo Z, et al. Antibody responses to individual proteins of SARS coronavirus
451 and their neutralization activities. *Microbes and infection*. 2005;7(5-6):882-889.

452 4. Tay MZ, Poh CM, Renia L, MacAry PA, Ng LFP. The trinity of COVID-19: immunity,
453 inflammation and intervention. *Nature reviews Immunology*. 2020.

454 5. Whitman JD, Hiatt J, Mowery CT, et al. Test performance evaluation of SARS-CoV-2
455 serological assays. *medRxiv*. 2020:2020.2004.2025.20074856.

456 6. Krammer F, Simon V. Serology assays to manage COVID-19. *Science*.
457 2020;368(6495):1060-1061.

458 7. Du L, He Y, Zhou Y, Liu S, Zheng BJ, Jiang S. The spike protein of SARS-CoV--a target for
459 vaccine and therapeutic development. *Nature reviews Microbiology*. 2009;7(3):226-236.

460 8. Walls AC, Park YJ, Tortorici MA, Wall A, McGuire AT, Velesler D. Structure, Function, and
461 Antigenicity of the SARS-CoV-2 Spike Glycoprotein. *Cell*. 2020;181(2):281-292 e286.

- 462 9. Shang J, Ye G, Shi K, et al. Structural basis of receptor recognition by SARS-CoV-2. *Nature*.
463 2020;581(7807):221-224.
- 464 10. Wrapp D, Wang N, Corbett KS, et al. Cryo-EM structure of the 2019-nCoV spike in the
465 prefusion conformation. *Science*. 2020;367(6483):1260-1263.
- 466 11. Wang Q, Zhang Y, Wu L, et al. Structural and Functional Basis of SARS-CoV-2 Entry by
467 Using Human ACE2. *Cell*. 2020;181(4):894-904 e899.
- 468 12. Wu Y, Wang F, Shen C, et al. A noncompeting pair of human neutralizing antibodies
469 block COVID-19 virus binding to its receptor ACE2. *Science*. 2020.
- 470 13. Tai W, Zhang X, He Y, Jiang S, Du L. Identification of SARS-CoV RBD-targeting monoclonal
471 antibodies with cross-reactive or neutralizing activity against SARS-CoV-2. *Antiviral*
472 *research*. 2020;179:104820.
- 473 14. Wrapp D, De Vlieger D, Corbett KS, et al. Structural Basis for Potent Neutralization of
474 Betacoronaviruses by Single-Domain Camelid Antibodies. *Cell*. 2020.
- 475 15. Wang C, Li W, Drabek D, et al. A human monoclonal antibody blocking SARS-CoV-2
476 infection. *Nature communications*. 2020;11(1):2251.
- 477 16. Jaimes JA, Andre NM, Chappie JS, Millet JK, Whittaker GR. Phylogenetic Analysis and
478 Structural Modeling of SARS-CoV-2 Spike Protein Reveals an Evolutionary Distinct and
479 Proteolytically Sensitive Activation Loop. *Journal of molecular biology*.
480 2020;432(10):3309-3325.

- 481 17. Che XY, Hao W, Wang Y, et al. Nucleocapsid protein as early diagnostic marker for SARS.
482 *Emerging infectious diseases*. 2004;10(11):1947-1949.
- 483 18. Ahmed SF, Quadeer AA, McKay MR. Preliminary Identification of Potential Vaccine
484 Targets for the COVID-19 Coronavirus (SARS-CoV-2) Based on SARS-CoV Immunological
485 Studies. *Viruses*. 2020;12(3).
- 486 19. Liu SJ, Leng CH, Lien SP, et al. Immunological characterizations of the nucleocapsid
487 protein based SARS vaccine candidates. *Vaccine*. 2006;24(16):3100-3108.
- 488 20. Surjit M, Lal SK. The SARS-CoV nucleocapsid protein: a protein with multifarious
489 activities. *Infection, genetics and evolution : journal of molecular epidemiology and
490 evolutionary genetics in infectious diseases*. 2008;8(4):397-405.
- 491 21. Zeng W, Liu G, Ma H, et al. Biochemical characterization of SARS-CoV-2 nucleocapsid
492 protein. *Biochemical and biophysical research communications*. 2020.
- 493 22. Zhang G, Nie S, Zhang Z, Zhang Z. Longitudinal Change of Severe Acute Respiratory
494 Syndrome Coronavirus 2 Antibodies in Patients with Coronavirus Disease 2019. *The
495 Journal of infectious diseases*. 2020;222(2):183-188.
- 496 23. Guo L, Ren L, Yang S, et al. Profiling Early Humoral Response to Diagnose Novel
497 Coronavirus Disease (COVID-19). *Clinical infectious diseases : an official publication of
498 the Infectious Diseases Society of America*. 2020.

- 499 24. Xiang F, Wang X, He X, et al. Antibody Detection and Dynamic Characteristics in Patients
500 with COVID-19. *Clinical infectious diseases : an official publication of the Infectious*
501 *Diseases Society of America*. 2020.
- 502 25. Zhao J, Yuan Q, Wang H, et al. Antibody responses to SARS-CoV-2 in patients of novel
503 coronavirus disease 2019. *Clinical infectious diseases : an official publication of the*
504 *Infectious Diseases Society of America*. 2020.
- 505 26. Long QX, Tang XJ, Shi QL, et al. Clinical and immunological assessment of asymptomatic
506 SARS-CoV-2 infections. *Nature medicine*. 2020.
- 507 27. Gudbjartsson DF, Norddahl GL, Melsted P, et al. Humoral Immune Response to SARS-
508 CoV-2 in Iceland. *The New England journal of medicine*. 2020.
- 509 28. Liu W, Liu L, Kou G, et al. Evaluation of Nucleocapsid and Spike Protein-based ELISAs for
510 detecting antibodies against SARS-CoV-2. *Journal of clinical microbiology*. 2020.
- 511 29. Burbelo PD, Riedo FX, Morishima C, et al. Detection of Nucleocapsid Antibody to SARS-
512 CoV-2 is More Sensitive than Antibody to Spike Protein in COVID-19 Patients. *The*
513 *Journal of infectious diseases*. 2020.
- 514 30. Okba NMA, Muller MA, Li W, et al. Severe Acute Respiratory Syndrome Coronavirus 2-
515 Specific Antibody Responses in Coronavirus Disease 2019 Patients. *Emerging infectious*
516 *diseases*. 2020;26(7).

517 31. Grzelak L, Temmam S, Planchais C, et al. A comparison of four serological assays for
518 detecting anti-SARS-CoV-2 antibodies in human serum samples from different
519 populations. *Science translational medicine*. 2020;12(559).
520

521 **TABLES**

522

523 **Table 1: 3Flex MFI^a values of negative pre-COVID-19 serum and serum positive for potential**
 524 **interfering etiologies.**

Sample group	<i>n</i>	Spike MFI Average (95% CI)	RBD MFI Average (95% CI)	Nucleocapsid MFI Average (95% CI)
Pre-COVID-19	93	140 (127-153)	91 (88-93)	224 (159-288)
Lyme	10	148 (138-157)	97 (92-102)	564 (58-1,069)
Syphilis	10	165 (148-182)	105 (98-113)	214 (3-284)
CMV	10	180 (113-247)	96 (91-102)	230 (99-361)
EBV/Mono	10	187 (134-241)	109 (102-117)	265 (165-365)
Acute viral respiratory illness	55	136 (121-151)	91 (90-93)	165 (107-223)
ANA	20	178 (153-202)	101 (97-104)	348 (162-535)
Rheumatoid Factor	10	149 (134-164)	99 (94-104)	476 (80-873)

525 ^a MFI: median fluorescent intensity.

526 Abbreviations: CMV, cytomegalovirus; EBV/Mono, Epstein-Barr virus mononucleosis; ANA, anti-
 527 nuclear antigen.

528 **Table 2: Percent positivity and average MFI^a values of 3Flex vs. Abbott™ ARCHITECT™ SARS-**
 529 **CoV-2 IgG serological tests by days from symptom onset for 125 unique patients.**

Days from symptom onset	Abbott™ ARCHITECT™ SARS-CoV-2 IgG		SARS2-MP			
	Total tests n (%)	Positive tests n (%)	Positive tests n (%)	Spike MFI Average (95% CI)	RBD MFI Average (95% CI)	Nucleocapsid MFI Average (95% CI)
≤5	25 (100.0)	8 (32.0)	12 (48.0)	4,637 (719-8,554)	2,337 (355-4,319)	6,578 (2,823-10,333)
6 to 10	25 (100.0)	13 (54.2) ^a	17 (68.0)	11,688 (5,053-18,324)	6,283 (1,700-10,867)	14,779 (6,111-23,477)
11 to 15	25 (100.0)	20 (80.0)	21 (84.0)	24,654 (15,358-33,950)	14,378 (6,202-22,554)	19,592 (12,242-26,941)
16 to 20	25 (100.0)	22 (91.6) ^a	23 (92.0)	23,202 (17,044-29,359)	14,222 (9,185-19,258)	25,534 (18,859-32,209)
≥21	25 (100.0)	23 (92.0)	23 (92.0)	27,010 (20,231-33,789)	16,258 (10,727-21,789)	22,591 (13,629-31,554)

530 ^a MFI: median fluorescent intensity.

531 ^b 1 test had insufficient volume for the Abbott™ ARCHITECT™ SARS-CoV-2 IgG assay.

532 **Table 3: Demographics, symptoms, and co-morbidities of 140 patients positive for SARS-CoV-**
 533 **2 by RT-PCR and tested for IgG in this study.**

Demographics	n	(%)
Female	65	(46.4)
Male	75	(53.6)
Nursing home residents	37	(26.4)
Age (average) in years	68.0	
Symptoms		
Fever	83	(59.3)
Cough	64	(45.7)
Headache	12	(8.6)
Sore throat	10	(7.1)
Shortness of breath	78	(55.7)
Altered mental status	45	(32.1)
Malaise	36	(25.7)
Diarrhea / Vomiting	42	(30.0)
Course of disease / Complications		
Days of hospitalization (average)	13.8	
ICU admission	66	(47.1)
Low oxygen saturation	75	(53.6)
Ventilation	47	(33.6)
Septic shock / vasopressor	28	(20.0)
Bacterial pneumonia	28	(20.0)
Deceased	20	(14.3)
Comorbidities		
Asthma	15	(10.7)
COPD	13	(9.3)
Diabetes	56	(40.0)
Hypertension	100	(71.4)
Obstructive sleep apnea	24	(17.1)
Coronary artery disease	19	(13.6)
Cerebrovascular disease	25	(17.9)
Immunodeficiency / Immunosuppression	11	(7.9)
History of smoking	77	(55.0)
Total	140	(100)

534

535 **Table 4: Percent positivity and average MFI^a values of all 3Flex serological tests by days from**
 536 **symptom onset for all patients tested^b**

Days from symptom onset	Total tests n (%)	Negative tests n (%)	Positive tests n (%)	Spike MFI Average (95% CI)	RBD MFI Average (95% CI)	Nucleocapsid MFI Average (95% CI)
≤5	67 (100.0)	33 (49.3)	34 (50.7)	11,565 (5,718-17,412)	8,723 (3,295-14,150)	13,794 (8,721-18,866)
6 to 10	106 (100.0)	21 (19.3)	85 (80.2)	23,051 (18,955-27,147)	16,172 (12,323-20,023)	27,028 (21,749-32,308)
11 to 15	85 (100.0)	9 (10.6)	76 (89.4)	29,545 (25,190-33,901)	19,876 (15,534-24,217)	28,598 (23,978-33,218)
16 to 20	88 (100.0)	5 (5.7)	83 (94.3)	31,006 (26,406-35,606)	20,694 (16,539-24,848)	28,474 (24,134-32,814)
≥21	188 (100.0)	5 (2.7)	183 (97.3)	31,751 (28,774-34,727)	19,516 (16,889-22,142)	20,459 (17,574-23,343)

537 ^a MFI: median fluorescent intensity.

538 ^b Includes multiple serological tests from non-unique patients.

539 **FIGURE LEGENDS**

540

541 **Figure 1**

542 **Utility of the 3Flex multiplex microsphere-based immunological assay for SARS-CoV-2**

543 **diagnostics and immunological research. (A)** Simplified workflow and illustration of the 3Flex

544 assay. **(B)** Total composite profile of IgG immune reactivity in SARS-CoV-2 -infected patients by

545 days from symptom. Data represented are median MFI values for each viral antigen (Spike, RBD,

546 and NP) from 534 serological tests (1,602 data points) of 140 patients. Tests shown are those

547 occurring between -5 to 45 days from symptom onset and includes tests deemed qualitatively

548 negative or positive. Data points outside the axis limits (273) are not shown. Fitted curve lines

549 are smoothed splines with 4 knots. **(C)** Histogram showing number of serological tests by day

550 from symptom onset and their qualitative positivity. **(D)** Composite profile of cycle threshold (C_t)

551 values from the same SARS-CoV-2 infected patients overlaid with the serological profile. C_t

552 values are plotted in reverse on the right axis (purple). A total of 521 RT-PCR tests are depicted

553 and each has 2 data points plotted. Undetected targets or negative tests were assigned a C_t of

554 45. Fitted curve lines are smoothed splines with 4 knots. **(E)** Histogram showing number of RT-

555 PCR (molecular) tests by day from symptom onset and their qualitative positivity. **(F)** Violin plot

556 comparison of median MFI values for patients admitted to the ICU ($n = 66$) vs. all other SARS-

557 CoV-2-infected patients ($n = 74$). Data shown are for serological tests interpreted as positive

558 only. Only 1 test for each unique patient was randomly selected for inclusion in each time

559 interval bin (≤ 5 , 6 to 10, 11 to 15, 16 to 20, and ≥ 21 days from symptom onset). Differences

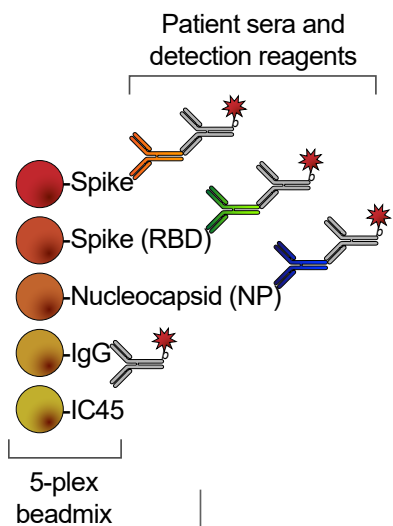
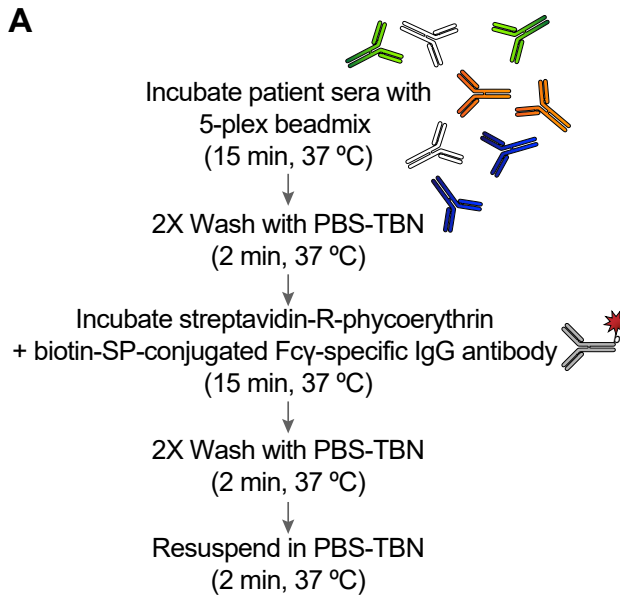
560 between violin plots are calculated using an unpaired t test: *, $P \leq 0.05$; **, $P \leq 0.01$. **(G)** Assay

561 schematic for ACE2 inhibition of antibody binding to the SARS-CoV-2 S and RBD antigens. **(H)**
562 Addition of ACE2 inhibits detection and binding of antibodies to S and RBD, but not to NP.
563 Percent residual (i.e. compared to no ACE2 added) mean MFI values with standard deviation
564 are shown at increasing ACE2 concentrations (x-axis log₂ scale). Sera tested ($n = 11$) were from
565 patients positive for SARS-CoV-2 IgG.

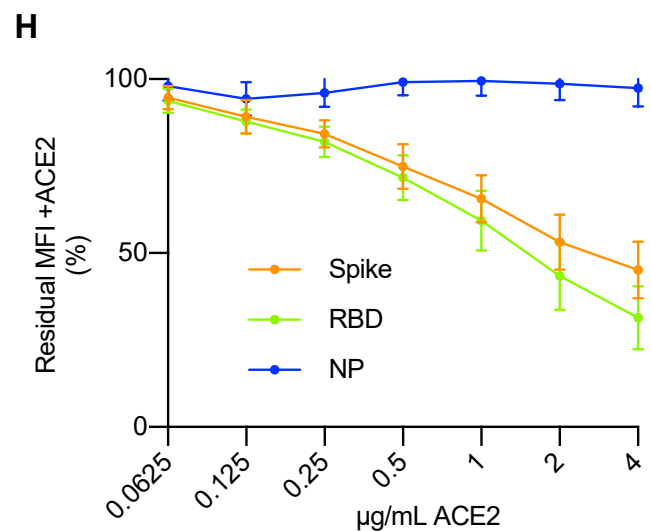
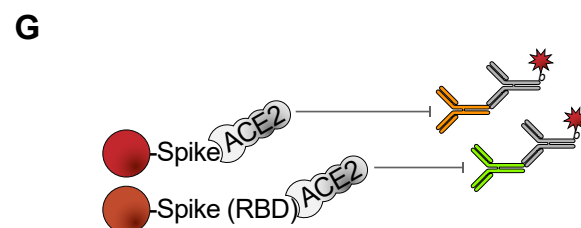
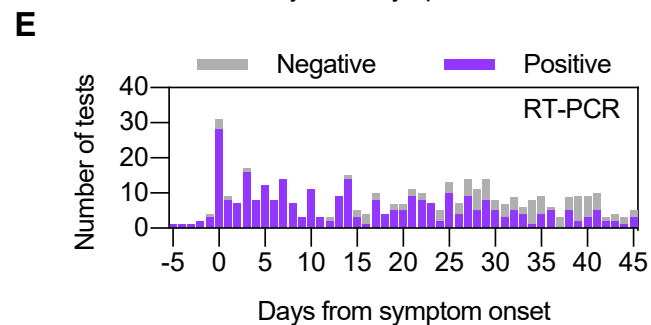
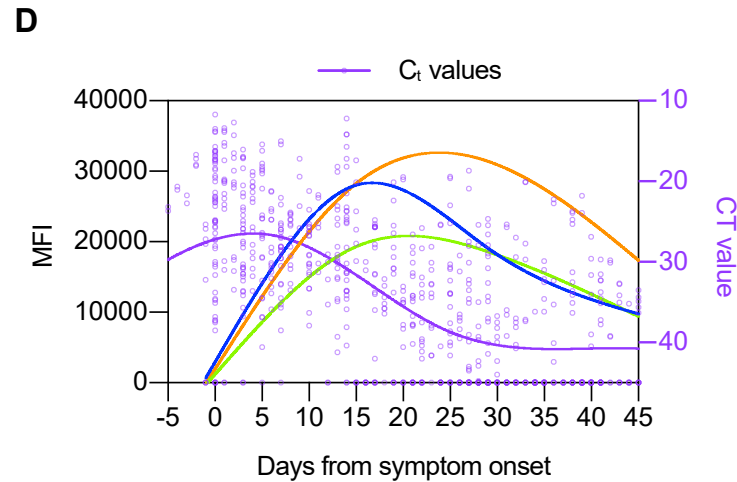
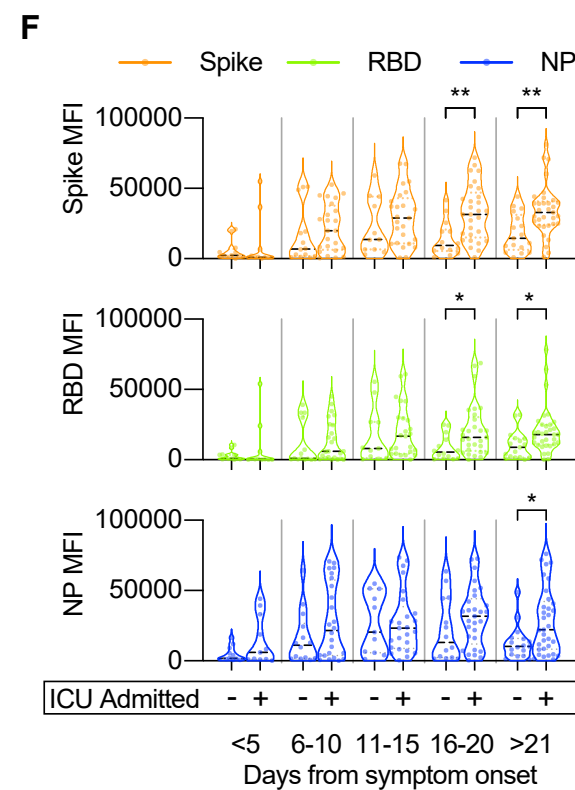
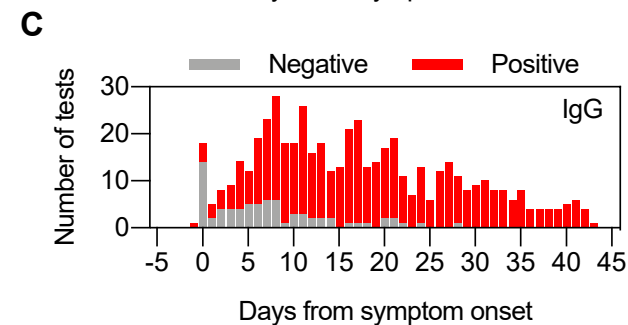
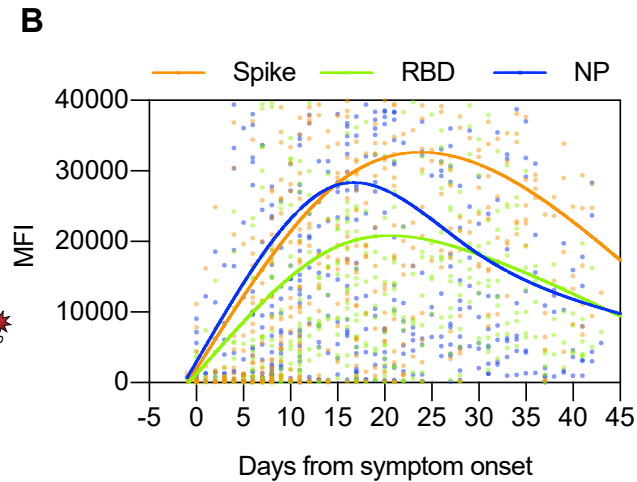
566

567 **Figure 2**

568 **Interperson variation in longitudinal IgG immunological responses to SARS-CoV-2 in**
569 **intensively hospitalized patients.** Longitudinal serum samples from ICU-admitted patients ($n =$
570 9) were tested for IgG to SARS-CoV-2 S, RBD, and NP antigens. Curve lines were fitted for each
571 antigen (smoothed splines with 4 knots). Corresponding RT-PCR C_t values were plotted in
572 reverse on the right axis (purple) and connected by straight lines through the mean C_t value of
573 each test. A single sample was randomly selected for each time interval bin (≤ 5 , 6 to 10, 11 to
574 15, 16 to 20, and ≥ 21 days from symptom onset) to assay for ACE2 inhibition. Values shown
575 above each plot are residual MFI values (in percent) for each antigen (percentage of MFI
576 detected with ACE2 addition compared to a no-ACE2 control).

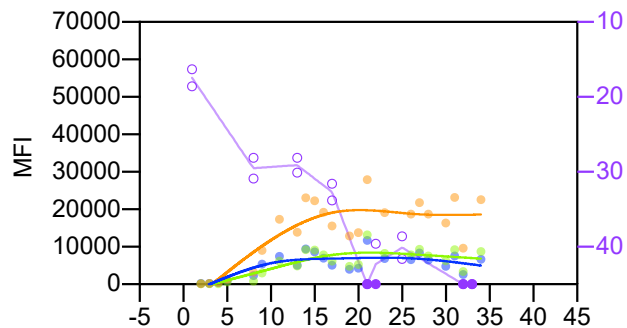


Read plate on FLEXMAP 3D and obtain median fluorescent intensity (MFI) values



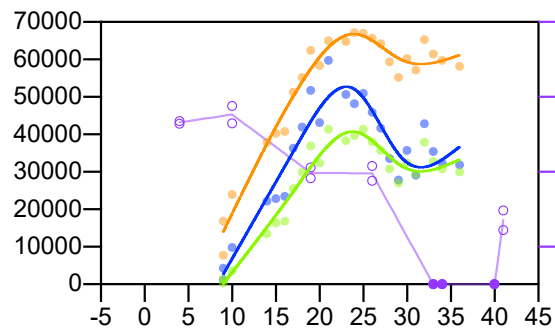
Patient A

Positivity	NEG	POS	POS	POS	POS
Spike	73.3	40.9	48.6	45.6	49.3
RBD	83.4	33.7	38.2	38.1	38.9
NP	100	98.1	96.1	100	96.5



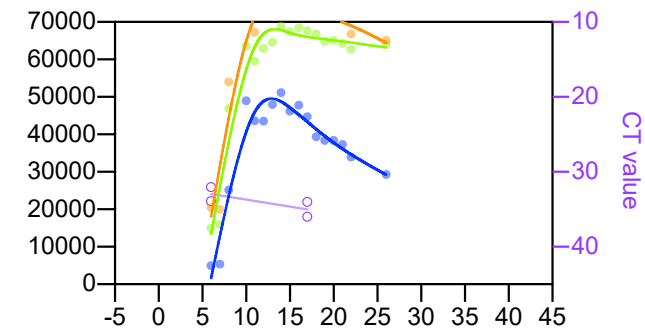
Patient B

Positivity	POS	POS	POS	POS
Spike	58.7	73.8	66.1	63.2
RBD	31.5	45.2	53.3	48.7
NP	98.0	100	92.7	96.5



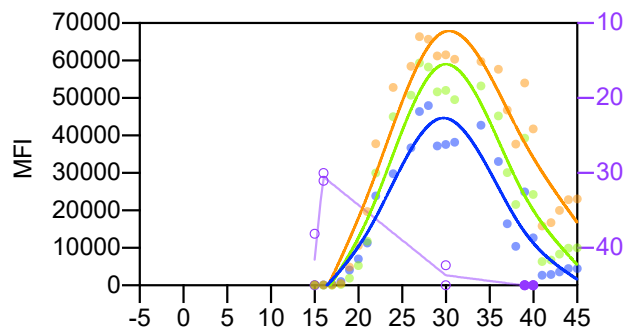
Patient C

Positivity	POS	POS	POS	POS	POS
Spike	42.8	61.7	74.7	75.4	68.9
RBD	40.6	60.8	75.3	79.4	74.7
NP	95.0	91.5	94.4	100	99.6



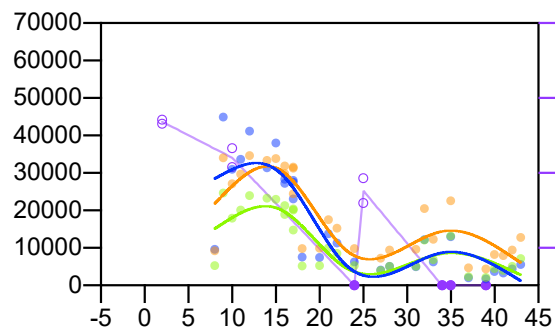
Patient D

Positivity	NEG	POS	POS
Spike	70.7	51.8	75.4
RBD	87.7	57.9	69.7
NP	97.6	95.9	97.2



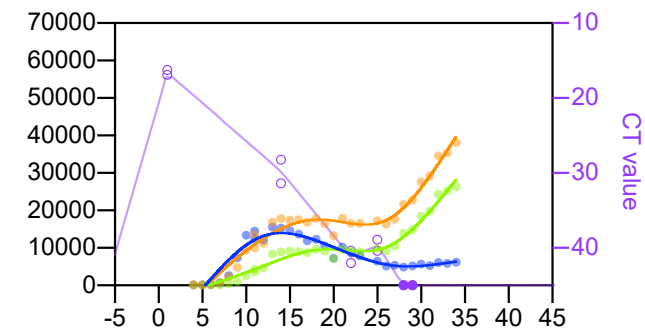
Patient E

Positivity	POS	POS	POS	POS
Spike	56.6	54.1	52.3	49.4
RBD	47.3	48.3	44.9	43.7
NP	100	96.6	92.0	100



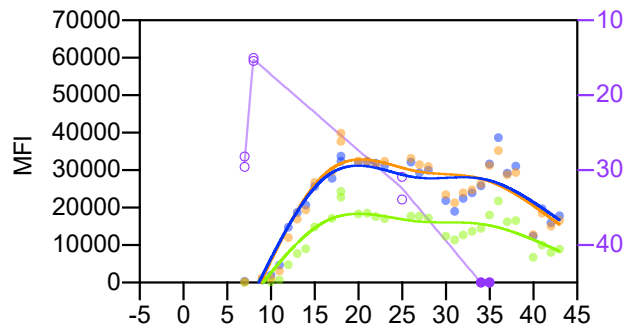
Patient F

Positivity	NEG	POS	POS	POS	POS
Spike	84.8	43.2	48.8	48.9	47.9
RBD	100	28.7	35.1	38.2	39.7
NP	97.0	100	99.2	99.8	100



Patient G

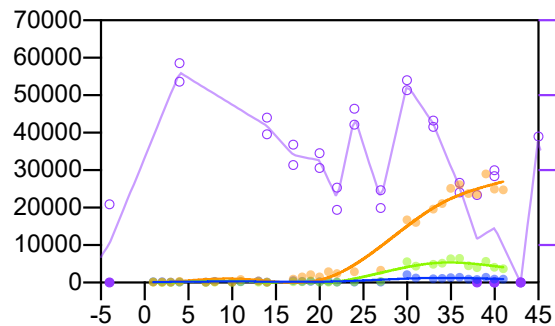
Positivity	NEG	POS	POS	POS
Spike	66.6	48.7	56.3	55.5
RBD	83.2	38.2	51.0	46.9
NP	96.0	97.8	100	100



Days from symptom onset

Patient H

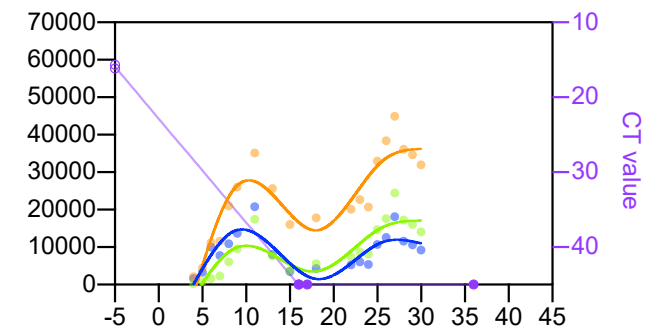
Positivity	NEG	NEG	NEG	POS	POS
Spike	55.3	66.6	59.5	46.7	59.0
RBD	74.0	98.2	79.9	46.7	36.6
NP	83.8	98.2	93.7	98.6	90.7



Days from symptom onset

Patient I

Positivity	POS	POS	POS	POS	POS
Spike	37.9	53.2	52.4	52.8	52.4
RBD	46.9	39.6	36.4	38.4	40.3
NP	99.3	100	99.9	100	99.8



Days from symptom onset