

1
2
3
4
5
6
7
8
9
10
11
12
13
14
15
16
17
18
19
20
21
22
23
24
25
26
27
28
29
30
31
32
33
34
35
36
37
38
39

ORIGINAL ARTICLE

Diagnostic performance of the combined nasal and throat swab in patients admitted to hospital with suspected COVID-19

Kuan Ken Lee, M.D.,¹ Dimitrios Doudesis, M.Sc.,^{1,2} Daniella A. Ross, M.D.,³
Anda Bularga, M.D.,¹ Claire L. MacKintosh, M.D., Ph.D.,³ Oliver Koch, M.D., Ph.D.,³
Ingolfur Johannessen, M.D., Ph.D.,⁴ Kate Templeton, Ph.D., FRCPath.,⁴
Sara Jenks, M.D., FRCPath.,⁵ Andrew R. Chapman, M.D., Ph.D.,¹
Anoop S.V. Shah, M.D., Ph.D.,^{1,6,7} Atul Anand, M.D., Ph.D.,¹
Meghan R. Perry, M.D., Ph.D.,³ Nicholas L. Mills, M.D., Ph.D.^{1,2}
*on behalf of the DataLoch COVID-19 Collaboration**

¹ BHF Centre for Cardiovascular Science, University of Edinburgh, Edinburgh, UK.

² Usher Institute, University of Edinburgh, Edinburgh, UK.

³ Regional Infectious Disease Unit, Western General Hospital, Edinburgh, UK.

⁴ Department of Clinical Virology, Royal Infirmary of Edinburgh, Edinburgh, UK

⁵ Department of Clinical Biochemistry, Royal Infirmary of Edinburgh, Edinburgh, UK.

⁶ Department of Non-communicable Disease Epidemiology, London School of Hygiene and Tropical Medicine, London, UK

⁷ Department of Cardiology, Imperial College Healthcare NHS Trust, London, UK

* Listed at the end of the manuscript

Corresponding Author:

Professor Nicholas L Mills
BHF/University Centre for Cardiovascular Science
The University of Edinburgh
Edinburgh EH16 4SA
United Kingdom
Telephone: 0044 131 242 6515
E-mail: nick.mills@ed.ac.uk

Abstract: 297

Word count: 3,500

Tables and figures: 5

References: 23

1 **Abstract**

2 **Background:** Accurate diagnosis in patients with suspected coronavirus disease 2019 (COVID-
3 19) is essential to guide treatment and limit spread of the virus. The combined nasal and throat
4 swab is used widely, but its diagnostic performance is uncertain.

5 **Methods:** In a prospective, multi-centre, cohort study conducted in secondary and tertiary care
6 hospitals in Scotland, we evaluated the combined nasal and throat swab with reverse
7 transcriptase-polymerase chain reaction (RT-PCR) for severe acute respiratory syndrome
8 coronavirus-2 (SARS-CoV-2) in consecutive patients admitted to hospital with suspected
9 COVID-19. Diagnostic performance of the index and serial tests was evaluated for a primary
10 outcome of confirmed or probable COVID-19, and a secondary outcome of confirmed COVID-
11 19 on serial testing. The diagnosis was adjudicated by a panel, who recorded clinical, laboratory
12 and radiological features blinded to the test results.

13 **Results:** We enrolled 1,369 consecutive patients (68 [53-80] years, 47% women) who underwent
14 a total of 3,822 tests (median 2 [1-3] tests per patient). The primary outcome occurred in 36%
15 (496/1,369), of whom 65% (323/496) and 35% (173/496) had confirmed and probable COVID-
16 19, respectively. The index test was positive in 255/496 (51%) patients with the primary
17 outcome, giving a sensitivity and specificity of 51.4% (95% confidence interval [CI] 48.8 to
18 54.1%) and 99.5% (95% CI 99.0 to 99.8%). Sensitivity increased in those undergoing 2, 3 or 4
19 tests to 60.1% (95% CI 56.7 to 63.4%), 68.3% (95% CI 64.0 to 72.3%) and 77.6% (95% CI 72.7
20 to 81.9%), respectively. The sensitivity of the index test was 78.9% (95% CI 74.4 to 83.2%) for
21 the secondary outcome of confirmed COVID-19 on serial testing.

- 1 **Conclusions:** In patients admitted to hospital, a single combined nasal and throat swab with RT-
- 2 PCR for SARS-CoV-2 has excellent specificity, but limited diagnostic sensitivity for COVID-19.
- 3 Diagnostic performance is significantly improved by repeated testing.
- 4 **Funding:** The British Heart Foundation
- 5

1 Introduction

2 Severe acute respiratory syndrome coronavirus-2 (SARS-CoV-2) is a novel strain of coronavirus,
3 which is responsible for the global pandemic of coronavirus disease 2019 (COVID-19).^{1,2}
4 Timely and accurate diagnostic testing in patients with suspected COVID-19 is essential to guide
5 treatment and implement infection control measures to limit spread of the virus.

6
7 Reverse transcriptase-polymerase chain reaction (RT-PCR) assays on material collected by
8 swabbing the nose and throat are the most commonly used diagnostic tests.³ However, a number
9 of reports have indicated discordance between the results of testing and clinical or radiological
10 findings in patients with symptoms of suspected COVID-19 and increasingly clusters of
11 asymptomatic carriers of SARS-CoV-2 are recognised.⁴⁻⁸ As such, uncertainty remains as to the
12 diagnostic performance of the combined nasal and throat swab to diagnose the clinical condition
13 of COVID-19, particularly in patients presenting late following the onset of symptoms when the
14 viral load may be lower.

15
16 Our aim was to evaluate the performance of the combined nasal and throat swab for the clinical
17 diagnosis of COVID-19 in consecutive patients admitted to hospital with suggestive symptoms,
18 and to determine whether there is heterogeneity across subgroups.

1 **Methods**

2 **Study design**

3 In a prospective, multi-centre, cohort study in secondary and tertiary care hospitals in Scotland,
4 United Kingdom, we evaluated the diagnostic performance of the combined nasal and throat
5 swab with RT-PCR for SARS-CoV-2 in consecutive patients admitted to hospital for symptoms
6 of suspected COVID-19. The study was performed with approval of the local Research Ethics
7 Committee and delegated Caldicott Guardian for the National Health Service (NHS) Lothian
8 Health Board, in accordance with the Declaration of Helsinki. All data were collected from the
9 patient record and national registries, deidentified and linked in a data repository (DataLoch™,
10 Edinburgh, United Kingdom) within a secure safe haven. Individual patient consent was not
11 sought, and only summary data was extracted to minimise the risk of disclosure.

13 **Participants**

14 Consecutive adult patients ≥ 18 years old were identified by the attending clinician using an
15 electronic form integrated into the care pathway at the time of testing with the combined nasal
16 and throat swab. Patients were eligible for inclusion if they were admitted to hospital with
17 symptoms suggestive of COVID-19 and had a reportable SARS-CoV-2 RT-PCR result from
18 material obtained through the combined swab (*Figure 1*). Patients were excluded if they had no
19 symptoms and testing was performed for screening purposes only, or if they had a previous
20 diagnosis of COVID-19.

22 **Procedures**

1 During the study period RT-PCR for SARS-CoV-2 was performed on material obtained from a
2 combined nasal and throat swab in patients presenting with symptoms suggestive of COVID-19
3 who were admitted to hospital. Repeat testing was at the discretion of the clinician responsible
4 for care. RNA gene targets differ by manufacturer, with the tests performed here targeting one or
5 more of the envelope (env), nucleocapsid (n), spike (s), RNA-dependent RNA polymerase
6 (RdRp), and open reading frame-1 (ORF1) genes. The sensitivities of the tests to individual
7 genes are comparable.⁹ Although patients were enrolled and underwent assessment and sampling
8 at three hospitals in the region, RT-PCR was performed in a single regional virology laboratory
9 at the Royal Infirmary of Edinburgh.

10

11 An electronic form was embedded into the order of the combined nasal and throat swab to
12 prospectively record information on the indication for testing, symptom type, and duration of
13 symptoms. This form was completed by the usual care clinician at the time of testing. Data was
14 extracted from the electronic patient record (TrakCare; InterSystems Corporation, Cambridge,
15 MA, USA), laboratory information management system (iLaboratory, Advanced Expert Systems
16 Medical, Derby, United Kingdom), the Scottish Morbidity Record, the Scottish Drug Dispensing
17 Database, and the Scottish Care Information store. The Scottish Index of Multiple Deprivation
18 (SIMD), an area-based measure of deprivation, was used to define socioeconomic status of each
19 individual based on 31 indicators across 7 domains (income, employment, health, education,
20 skills and training, housing, geographic access, and crime).¹⁰

21

22 **Outcomes**

1 Diagnostic performance of the index test was evaluated for a primary outcome of probable or
2 confirmed COVID-19, and a secondary outcome of confirmed COVID-19 on serial testing. All
3 clinical diagnoses were adjudicated by an independent, inter-disciplinary panel of clinicians
4 using all information available within the electronic patient record, including contact history and
5 review of all laboratory and radiological imaging performed.

6
7 The diagnosis of COVID-19 was based on the case definition proposed by the World Health
8 Organisation.¹¹ The panel identified patients as suspected COVID-19 where they were admitted
9 to hospital with an acute respiratory illness (fever with at least one sign or symptom of
10 respiratory disease such as cough or shortness of breath) and had no alternative diagnosis that
11 fully explained the clinical presentation. The panel recorded clinical, laboratory and radiological
12 features of suspected COVID-19 without knowledge of the index and subsequent test results.
13 Patients with parameters consistent with COVID-19 were subsequently classified as probable
14 COVID-19 where all tests for the SARS-CoV-2 virus from any sample type were negative, or
15 confirmed COVID-19 where any test was positive during the hospital episode, or within 7 days
16 of the index presentation in those discharged.

17
18 For the evaluation of diagnostic performance for the primary outcome, patients were classified
19 into the following groups: 1) *Confirmed COVID-19* in those with acute respiratory illness AND a
20 positive test for SARS-CoV-2 (true positives); 2) *Probable COVID-19* in those with acute
21 respiratory illness AND negative tests for SARS-CoV-2 AND no other diagnosis to explain the
22 clinical presentation (false negatives); 3) Alternative diagnosis that fully explained their clinical
23 presentation AND a positive test for SARS-CoV-2 (false positive); or 4) Alternative diagnosis

1 that fully explained their clinical presentation AND negative tests for SARS-CoV-2 (true
2 negatives).

3
4 For evaluation of diagnostic performance for the secondary outcome, patients with confirmed
5 COVID-19 were classified as true positives, and those with probable COVID-19 were classified
6 as true negatives rather than false negatives.

7
8

9 **Sample size and power**

10 Based on data from the Hubei and Shandong provinces and Beijing, China, we anticipated that
11 approximately 32% (126/398) of combined nasal and throat swabs performed would be positive
12 for SARS-CoV-2.⁶ We recognise that there may be differences in the approach to the selection of
13 patients for testing between countries, and therefore our sample size was based on a more
14 conservative positive test rate of 20%. We estimated that with 1,000 patients, we will have 80%
15 power to estimate the confidence interval for a sensitivity of 90% with lower and upper intervals
16 of 85% and 95% respectively.

17
18 **Statistical analysis**

19 Baseline characteristics, clinical features, and laboratory results are summarised as number
20 (percentage) or median (interquartile range) for the study population, and stratified according to
21 the adjudicated diagnosis. Two-by-two contingency tables were constructed to compare the
22 index test (positive or negative) in those with and without the primary and secondary outcome on
23 serial testing (reference standard). Test sensitivity, specificity, negative predictive value (NPV)

1 and positive predictive value (PPV) with 95% confidence intervals was determined in all
2 participants and in pre-specified subgroups including age, sex, duration of symptoms prior to
3 testing, fever, and respiratory tract symptoms. In patients where more than one test was
4 performed, we report test results and compare diagnostic performance of the index test with the
5 performance of multiple tests. All analyses were performed using R (version 3.6.1).

6

7 **Role of the funding source**

8 The funders played no role in the study design, in the collection, analysis, and interpretation of
9 the data, in the writing of the report, or in the decision to submit the paper for publication. The
10 authors had full access to all the data in the study and had final responsibility for the decision to
11 submit for publication.

1 **Results**

2 Between April 3 and 20, 2020, we enrolled 1,369 consecutive patients (median age 68
3 [interquartile range, IQR 53-80] years, 47% women) who underwent a total of 3,822 combined
4 nasal and throat swab tests (median 2 [IQR 1-3] tests per patient) for symptoms of suspected
5 COVID-19 (**Figure 1**). The primary outcome occurred in 36% (496/1,369), of whom 65%
6 (323/496) and 35% (173/496) had confirmed and probable COVID-19, respectively. Of those
7 with an alternative diagnosis (64% [873/1,269]), the most frequent diagnoses were other
8 respiratory infections (25%, [221/873]) and non-communicable cardiorespiratory conditions
9 (21%, [181/873]), such as heart failure, chronic obstructive pulmonary disease and asthma.

10
11 Patients with confirmed or probable COVID-19 were older than those with an alternative
12 diagnosis (median age of 71 [57-82] *versus* 67 [53-80] years), more likely to be men (57%
13 [281/496] *versus* 52% [450/873]) and were less likely to be from an area of deprivation (13%
14 [65/496] *versus* 20% [174/873]). However, they had similar comorbidities and were as likely to
15 be receiving angiotensin converting enzyme inhibitors, corticosteroids or immunosuppressants at
16 presentation (**Table 1 and eTable 1 in the Supplement**).

17
18 Compared to patients with an alternative diagnosis, those with confirmed or probable COVID-19
19 had a lower lymphocyte and neutrophil count (median $1.14 \times 10^9/L$ *versus* $1.44 \times 10^9/L$ and 5.8
20 $\times 10^9/L$ *versus* $6.4 \times 10^9/L$, respectively), but a higher C-reactive protein concentration (52 mg/dL
21 *versus* 22 mg/dL) at presentation (**eTable 2 and 3 in the Supplement**). In patients with probable
22 or confirmed COVID-19, compared to those with an alternative diagnosis, some symptoms and
23 signs were more common, including fever on presentation (65% [322/496] *versus* 42%

1 [369/873]), upper and lower respiratory tract symptoms (13% [63/496] *versus* 10% [78/873];
2 85% [419/496] *versus* 54% [473/873], respectively), and systemic symptoms (52% [257/496]
3 *versus* 28% [244/873]). In contrast, there were no differences in the frequency of neurological
4 (24% [118/496] *versus* 22% [191/873]) or gastrointestinal symptoms (22% [107/496] *versus*
5 24% [209/873]) (**Figure 2a and eTable 4 in the Supplement**). Patients with probable or
6 confirmed COVID-19 were six-times more likely to have radiological signs of infection on chest
7 imaging than those with an alternative diagnosis (64% [316/496] *versus* 11% [93/873]). Patients
8 with confirmed COVID-19 had similar symptoms as those with probable COVID-19 (**Figure 2b**
9 **and eTable 5 in the Supplement**), but were more likely to have lymphopenia, systemic
10 inflammation and radiological signs of infection.

11
12 The index test was positive in 255/496 (51%) patients with the primary outcome (**eTable 2 in the**
13 **Supplement**), giving a sensitivity, specificity, negative predictive value and positive predictive
14 value of 51.4% (95% confidence interval [CI] 48.8 to 54.1%), 99.5% (95% CI 99.0 to 99.8%),
15 78.3% (95% CI 76.0 to 80.4%) and 98.5% (95% CI 97.7 to 99.0%), respectively (**eTable 6 in the**
16 **Supplement**). Sensitivity was lower in patients from areas with the greatest deprivation (32.6%
17 [95% CI 21.6 to 43.9%] *versus* 53.9% [95% CI 45.7 to 62.1%], quintile with the most
18 deprivation compared to the quintile with the least deprivation). Otherwise, sensitivity remained
19 consistent across other patient demographic factors, comorbidities and symptoms (**Figure 3a**).
20 The negative predictive value of the index test was consistent across patient demographics and
21 comorbidities, but was lower in those with fever (70.3% [95% CI 66.3 to 74.2%]), lower
22 respiratory symptoms (69.5% [95% CI 66.1 to 73.0%]) and those with a longer duration of
23 symptoms prior to hospital admission (68.7% [95% CI 63.2 to 74.1%] *versus* 87.1% [95% CI

1 83.3 to 90.7%] for patients presenting ≥ 4 days after symptom onset compared to those presenting
2 within one day (*Figure 3b*).

3
4 The majority of patients underwent serial testing (59.5%, 815/1,369) with 22.6% (310/1,369)
5 undergoing 4 or more serial tests (*eFigure 1 and 2, and eTable 6 in the Supplement*). Of those
6 with confirmed COVID-19, patients with a negative index test result underwent more serial
7 testing than those with a positive index test result (95.6% [65/68] *versus* 65.9% [168/255] with
8 median test per patient of 4 [2-6] *versus* 2 [1-5] respectively). The median time between first and
9 second tests was shorter in patients with confirmed COVID-19 who had a negative index test
10 result and those with probable COVID-19 (1.7 [0.8-10.9] days and 1.2 [0.9-4.6] days
11 respectively) compared to patients with confirmed COVID-19 who had a positive index test
12 result and those with an alternative diagnosis (6.8 [4.0-8.6] days and 6.1 [1.1-21.8] days
13 respectively). Sensitivity for the primary outcome increased in those undergoing 2, 3 or 4 serial
14 tests to 60.1% (95% CI 56.7 to 63.4%), 68.3% (95% CI 64.0 to 72.3%) and 77.6% (95% CI 72.7
15 to 81.9%), respectively (*Figure 4 and eTable 7 in the Supplement*). The negative predictive
16 value increased more modestly on serial testing; from 78.3% (76.0 to 80.4%) for the index test to
17 79.8% (75.0 to 83.9%) in those undergoing 4 serial tests. These observations persisted in a
18 sensitivity analysis restricted to patients who underwent at least 4 tests and for the secondary
19 outcome (*Figure 4, eFigure 3 and 4, and eTable 8 in the Supplement*).

20
21 Sensitivity of the index test for the secondary outcome of a diagnosis of confirmed COVID-19
22 on serial testing was 78.9% (95% CI 74.4 to 83.2%) (*eFigure 5a in the Supplement*). There was
23 no significant heterogeneity in sensitivity across patient demographics, comorbidities or

1 presenting symptoms. The negative predictive value of the index test was 93.8% (95% CI 92.4 to
2 95.2%) for a diagnosis of confirmed COVID-19 on serial testing (*eFigure 5b in the*
3 *Supplement*). The negative predictive value remained consistent across patient demographics
4 and comorbidities, but was lower in patients who presented with a fever (89.6% [95% CI 86.9 to
5 92.1%]) and those who had lower respiratory symptoms (91.5% [95% CI 89.4 to 93.6%]).

1 **Discussion**

2 In this prospective, multi-centre, cohort study, we evaluated the diagnostic performance of the
3 combined nasal and throat swab with RT-PCR for SARS-CoV-2 in consecutive patients admitted
4 to hospital with symptoms of suspected COVID-19. We report a number of potentially important
5 findings. First, a single test had excellent specificity, but limited sensitivity for an adjudicated
6 diagnosis of probable or confirmed COVID-19. Second, the sensitivity of the index test was
7 higher for patients with confirmed COVID-19 on serial testing, but still missed 1 in 5 patients
8 with the diagnosis. Third, diagnostic performance was similar in most patient subgroups, but the
9 sensitivity was lower in those from more deprived areas, and the negative predictive value was
10 lower in those presenting later following the onset of symptoms, and in those with fever or lower
11 respiratory symptoms. Finally, we observed a significant improvement in diagnostic sensitivity
12 with repeated testing on up to four occasions.

13
14 Our study has several strengths. This was a prospective, multi-centre study that was adequately
15 powered to evaluate the diagnostic performance of the combined nasal and throat swab. Patients
16 were enrolled using an electronic form embedded within clinical care across all secondary and
17 tertiary hospitals in the region. This permitted us to include all consecutive patients who
18 underwent testing for symptoms that were considered to be suggestive of COVID-19 by their
19 usual care clinician minimizing selection bias and ensuring our findings are representative of all
20 hospitalised patients across the region. The diagnosis was adjudicated by a multidisciplinary
21 panel of clinicians from a range of specialities involved in the care of patients with COVID-19,
22 including infectious disease, emergency medicine, general medicine and geriatric medicine, and
23 therefore our findings are relevant to clinical practice across secondary and tertiary care settings.

1 To our knowledge this is the first evaluation of the diagnostic performance of the combined nasal
2 and throat swab for a clinical diagnosis of COVID-19. The evaluation of the combined nasal and
3 throat swab is particularly important since this is the most widely used diagnostic modality to
4 identify or exclude SARS-CoV-2 infection. Although the RT-PCR test for SARS-CoV-2 has
5 excellent *in vitro* analytical performance under carefully controlled laboratory conditions,⁹
6 diagnostic performance in clinical practice can vary due to multiple other factors, such as the site
7 and quality of sampling, stage of disease, and viral multiplication or clearance.^{3,6,12} Previous
8 studies have reported diagnostic sensitivities ranging from 50% to 100% for the combined nasal
9 and throat swab with a meta-analysis reporting a pooled meta-estimate of 89% (95% CI 81 to
10 94%).^{4,6,13-16} However, these studies have been performed in relatively small, selected patient
11 cohorts, which limit the generalisability of study findings across the breadth of patients
12 presenting to hospitals with suspected COVID-19. Furthermore, the reference standard used in
13 these studies was either radiological findings on chest computed tomography, or the results of
14 subsequent RT-PCR tests, which inevitably leads to an increase in the estimated diagnostic
15 sensitivity. Indeed, when our reference standard was restricted to confirmed COVID-19 on serial
16 testing, diagnostic sensitivity increased from 51.4% to 78.9%.

17
18 In subgroup analyses, the diagnostic performance was similar in older patients, those with
19 diabetes, known respiratory or cardiovascular disease. These findings are reassuring since these
20 patient subgroups have been identified as those at the highest risk of death from COVID-19.¹⁷⁻¹⁹
21 However, we observed that diagnostic sensitivity was lower in patients from the most deprived
22 areas. This may reflect differences in the clinicians approach to testing by deprivation, rather
23 than a consequence of deprivation itself, but this requires further evaluation. Furthermore, we

1 observed that negative predictive value was lower in those who presented late in the course of
2 their illness, and those with symptoms of fever and lower respiratory tract symptoms. This is
3 consistent with virological assessments of patients hospitalised with COVID-19 which showed
4 that viral RNA shedding from the upper respiratory tract is typically highest at the onset of
5 symptoms, but subsequently declines as the disease progresses.^{12,20} The lower negative
6 predictive value in those with typical clinical symptoms is likely to reflect a higher pre-test
7 probability for COVID-19 in these patients.

8
9 Our findings have potentially important implications for the use and interpretation of this test in
10 clinical practice. Whilst the diagnosis of COVID-19 is still largely reliant on RT-PCR on
11 material collected on nose and throat swabs, clinicians need to be aware of the strengths and
12 limitations of testing when making decisions on the placement of patients within hospital settings
13 and discharge planning. In our study, the most conservative estimate of diagnostic sensitivity
14 was 51%, where the index test was negative in 1 in 2 patients with the primary outcome of
15 probable or confirmed COVID-19. Our most optimistic estimate of diagnostic sensitivity was
16 79%, where the index test was negative in 1 in 5 patients with the secondary outcome of
17 confirmed COVID-19. Whilst, the former may underestimate performance, the latter is certainly
18 an overestimate due to circular reasoning, whereby the test under evaluation is an essential
19 component of the reference standard.

20
21 In this consecutive series of hospitalised patients where testing was performed for symptoms at
22 the discretion of the usual care clinician, our multi-disciplinary panel diagnosed probable
23 COVID-19 in 12.6% of patients. The panel included representation from a broad range of

1 medical specialities involved in the assessment of these patients, and therefore their judgment is
2 likely to be representative of clinical practice. Our approach aims to provide insights into the
3 performance of the test as it is applied in clinical practice. Interestingly patients with probable
4 COVID-19 or confirmed COVID-19 and a negative index test were more likely to be retested
5 within the next 24-48 hours. This likely reflects the usual care clinician's uncertainty when
6 interpreting a negative test. Indeed for both the primary and secondary outcome, diagnostic
7 performance improved significantly with up to four serial tests, and this observation could
8 inform our approach to serial testing in practice with implications for patient flow and
9 management of hospitalised patients. Our findings also have implications when defining the
10 reference standard for studies evaluating the performance of point of care²¹ and laboratory
11 antibody tests²² to determine those with and without prior infection. Future research should
12 evaluate performance in patients undergoing testing in the community, and determine whether
13 performance can be improved by incorporating a measure of sampling efficacy using epithelial
14 cell counts²³, or whether the diagnostic yield is higher in other sample types, such as saliva or
15 sputum.

16
17 We acknowledge our study has several limitations. We did not mandate the number of serial tests
18 as all diagnostic testing was performed at the discretion of the treating clinician. Therefore those
19 with a negative index test undergoing serial testing are likely to have had a higher pre-test
20 probability than those undergoing a single test. Nevertheless, it is reassuring that a similar
21 increase in diagnostic performance with serial testing was observed in a sensitivity analysis
22 restricted to those patients who had a complete series of at least four tests. Further studies with
23 systematic sampling in consecutive patients are required to validate this observation. In the

1 absence of an independent gold standard test for the diagnosis of COVID-19, our diagnostic
2 evaluation was based on clinical review of all tests ordered by the usual care clinician. As a
3 comprehensive panel of respiratory pathogens was not requested in all patients, it is likely we
4 have misclassified some patients as COVID-19 who had other viral or bacterial infections. We
5 may have overestimated the diagnosis of COVID-19 given the study was performed during the
6 peak of a pandemic. However, we reviewed all available clinical investigations including all
7 laboratory and imaging findings, and only defined patients with suspected COVID-19 where
8 there was no alternative diagnosis. Furthermore, the clinical features of those with probable or
9 confirmed COVID-19 were identical, suggesting no systematic bias was introduced during the
10 adjudication.

11
12 In conclusion, a single combined nasal and throat swab with RT-PCR for SARS-CoV-2 has
13 excellent specificity, but limited diagnostic sensitivity for the clinical diagnosis of COVID-19.
14 Diagnostic performance is significantly improved by repeated testing.

15

1 **DataLoch COVID-19 Collaborators**

2 **Clinical Lead:** Atul Anand

3 **Programme Lead:** Kathy Harrison

4 **DataLoch Technical and Management Group:** Catherine Stables, Ally Hume, David Homan,
5 Catriona Waugh, Jilly McKay, Chris Duncan, Ronnie Harkess

6 **DataLoch Leadership Group:** Kathy Harrison, Michael Gray, Colan Mahaffey, Pamela
7 Linksted, Atul Anand, Anoop SV Shah, Rob Baxter, Peter Cairns, Nicola Rigglesford, Martin
8 Egan, Nicholas L Mills

9 **Infectious Diseases Unit:** Daniella A Ross, Claire L Mackintosh, Oliver Koch, Kate Templeton,
10 Meghan R Perry

11 **COVID-19 Clinical Data Review:** Daniella A Ross, Anda Bularga, Hannah MM Preston,
12 Thomas J McCormick, Arjuna A Sivakumaran, Kathryn AW Knight, Rosie Callender, Anna K
13 Jamieson, Jonathan Wubetu, John P Kelly, Zaina Sharif, Ha Bao Trung Le, Jason Yang, Arun
14 Parajuli, Ed Whittaker, Oscar CN Maltby, Sarah H Goodwin, Louisa R Cary, Emma K Watson,
15 Thomas H Clouston, Julia Guerrero Enriquez, XinYi Ng

16 **COVID-19 Adjudication Panel:** Kuan Ken Lee, Daniella A Ross, Anda Bularga, Andrew R
17 Chapman, Yvonne K McFarlane, Kate H Regan, Richard P Biggers, John P Kelly, Kathryn AW
18 Knight, Hannah MM Preston, Thomas J McCormick, Anoop SV Shah, Atul Anand, Meghan R
19 Perry, Nicholas L Mills

20 **NHS Lothian eHealth and Lothian Analytical Services:** Alistair Stewart, Alastair Thomson,
21 Chris Duncan, Daniella Ene, Hazel Neilson, Juergen Caris, Maria McMenemy, Nazir Lone,
22 Nicola Rigglesford, Paul Schofield, Sophie McCall, Stephen Young, Tracey McKinley, Tracey
23 Rapson

1 **Acknowledgements**

2 This study was funded by a British Heart Foundation (BHF) Research Excellence Award
3 (RE/18/6134217). DataLochTM is funded by the University of Edinburgh, and the UK and
4 Scottish Governments as part of the Data Driven Innovation in Health & Social Care
5 programme. AA is supported by a Clinical Lectureship from the Chief Scientist Office
6 (PCL/18/05). KL and NLM are supported by a Clinical Research Training Fellowship
7 (FS/18/25/33454) and the Butler Senior Clinical Research Fellowship (FS/16/14/32023) from the
8 British Heart Foundation, respectively. DD is supported by the Medical Research Council
9 (MR/N013166/1). ARC is supported by a Starter Grant for Clinical Lecturers from the Academy
10 of Medical Sciences (SGL021\1075).

11

12 **Declaration of Interests**

13 All authors have no interests to declare.

14

15 **Author Contributions**

16 KKL, AA, ASVS and NLM conceived the study and its design. KKL, DR, AB, ARC, ASVS,
17 AA, MP, and NLM acquired the data. KKL and DD performed the analysis. KKL, DD, DR, AB,
18 CM, OK, IJ, SJ, ARC, ASVS, AA, MP, and NLM interpreted the data. KKL and NLM drafted
19 the manuscript. All authors revised the manuscript critically for important intellectual content
20 and provided their final approval of the version to be published. All authors are accountable for
21 the work.

1 **References**

- 2 1. Huang C, Wang Y, Li X, et al. Clinical features of patients infected with 2019 novel
3 coronavirus in Wuhan, China. *Lancet*. 2020;395(10223):497-506.
- 4 2. Gates B. Responding to Covid-19 - A Once-in-a-Century Pandemic? *N Engl J Med*.
5 2020;382(18):1677-1679.
- 6 3. Sethuraman N, Jeremiah SS, Ryo A. Interpreting Diagnostic Tests for SARS-CoV-2.
7 *JAMA*. 2020.
- 8 4. Fang Y, Zhang H, Xie J, et al. Sensitivity of Chest CT for COVID-19: Comparison to
9 RT-PCR. *Radiology*. 2020:200432.
- 10 5. Guan WJ, Ni ZY, Hu Y, et al. Clinical Characteristics of Coronavirus Disease 2019 in
11 China. *N Engl J Med*. 2020;382(18):1708-1720.
- 12 6. Wang W, Xu Y, Gao R, et al. Detection of SARS-CoV-2 in Different Types of Clinical
13 Specimens. *JAMA*. 2020.
- 14 7. Pan X, Chen D, Xia Y, et al. Asymptomatic cases in a family cluster with SARS-CoV-2
15 infection. *The Lancet Infectious diseases*. 2020;20(4):410-411.
- 16 8. Bai Y, Yao L, Wei T, et al. Presumed Asymptomatic Carrier Transmission of COVID-19.
17 *JAMA*. 2020.
- 18 9. Corman VM, Landt O, Kaiser M, et al. Detection of 2019 novel coronavirus (2019-
19 nCoV) by real-time RT-PCR. *Euro Surveill*. 2020;25(3).
- 20 10. The Scottish Index of Multiple Deprivation. Scottish Government.
21 (<https://www2.gov.scot/Topics/Statistics/SIMD>) [Accessed July 8th 2020].

- 1 11. Global Surveillance for human infection with coronavirus disease (COVID-19).
2 ([https://www.who.int/publications-detail/global-surveillance-for-human-infection-with-
4 novel-coronavirus-\(2019-ncov\)](https://www.who.int/publications-detail/global-surveillance-for-human-infection-with-
3 novel-coronavirus-(2019-ncov))) [accessed May 10th 2020].
- 4 12. Wolfel R, Corman VM, Guggemos W, et al. Virological assessment of hospitalized
5 patients with COVID-2019. *Nature*. 2020;581(7809):465-469.
- 6 13. Kim H, Hong H, Yoon SH. Diagnostic Performance of CT and Reverse Transcriptase-
7 Polymerase Chain Reaction for Coronavirus Disease 2019: A Meta-Analysis. *Radiology*.
8 2020:201343.
- 9 14. Wu C, Chen X, Cai Y, et al. Risk Factors Associated With Acute Respiratory Distress
10 Syndrome and Death in Patients With Coronavirus Disease 2019 Pneumonia in Wuhan,
11 China. *JAMA Intern Med*. 2020.
- 12 15. Li Y, Yao L, Li J, et al. Stability issues of RT-PCR testing of SARS-CoV-2 for
13 hospitalized patients clinically diagnosed with COVID-19. *J Med Virol*. 2020;92(7):903-
14 908.
- 15 16. Ai T, Yang Z, Hou H, et al. Correlation of Chest CT and RT-PCR Testing in Coronavirus
16 Disease 2019 (COVID-19) in China: A Report of 1014 Cases. *Radiology*. 2020:200642.
- 17 17. Docherty AB, Harrison EM, Green CA, et al. Features of 20 133 UK patients in hospital
18 with covid-19 using the ISARIC WHO Clinical Characterisation Protocol: prospective
19 observational cohort study. *BMJ*. 2020;369.
- 20 18. Du RH, Liang LR, Yang CQ, et al. Predictors of mortality for patients with COVID-19
21 pneumonia caused by SARS-CoV-2: a prospective cohort study. *Eur Respir J*.
22 2020;55(5).

- 1 19. Williamson EJ, Walker AJ, Bhaskaran K, et al. OpenSAFELY: factors associated with
2 COVID-19 death in 17 million patients. *Nature*. 2020.
- 3 20. Zheng S, Fan J, Yu F, et al. Viral load dynamics and disease severity in patients infected
4 with SARS-CoV-2 in Zhejiang province, China, January-March 2020: retrospective
5 cohort study. *BMJ*. 2020;369.
- 6 21. Li Z, Yi Y, Luo X, et al. Development and clinical application of a rapid IgM-IgG
7 combined antibody test for SARS-CoV-2 infection diagnosis. *J Med Virol*. 2020.
- 8 22. Long QX, Liu BZ, Deng HJ, et al. Antibody responses to SARS-CoV-2 in patients with
9 COVID-19. *Nat Med*. 2020;26(6):845-848.
- 10 23. Bonnin P, Mischczak F, Kin N, et al. Study and interest of cellular load in respiratory
11 samples for the optimization of molecular virological diagnosis in clinical practice. *BMC*
12 *Infect Dis*. 2016;16:384.
13

1 **Table 1.** Baseline characteristics of patients undergoing testing with suspected COVID-19

	All (n = 1,369)	COVID-19* (n = 496)	Alternative diagnosis (n = 873)
Age, years	68 (53, 80)	71 (57, 82)	67 (51, 78)
Sex			
Men	731 (53%)	281 (57%)	450 (52%)
Women	638 (47%)	215 (43%)	423 (48%)
Ethnicity			
White	1088 (97%)	372 (97%)	716 (98%)
Other	29 (2.6%)	11 (2.9%)	18 (2.5%)
Deprivation			
1 (most deprivation)	239 (18%)	65 (13%)	174 (20%)
2	322 (24%)	116 (24%)	206 (24%)
3	236 (17%)	79 (16%)	157 (18%)
4	243 (18%)	93 (19%)	150 (17%)
5 (least deprivation)	319 (23%)	139 (28%)	180 (21%)
Duration of symptoms	3.0 (1.0, 5.0)	3.0 (2.0, 7.0)	2.0 (1.0, 4.0)
Comorbidities			
Diabetes mellitus	251 (18%)	96 (19%)	155 (18%)
Ischemic heart disease	137 (10%)	45 (9.1%)	92 (11%)
Heart failure	113 (8.3%)	38 (7.7%)	75 (8.6%)
Stroke	82 (6.0%)	27 (5.4%)	55 (6.3%)
COPD	206 (15%)	58 (12%)	148 (17%)
Asthma	113 (8.3%)	30 (6.0%)	83 (9.5%)
Liver cirrhosis	27 (2.0%)	8 (1.6%)	19 (2.2%)
End stage kidney disease	25 (1.8%)	12 (2.4%)	13 (1.5%)
Medications at presentation			
ACE inhibitors or ARBs	336 (25%)	129 (26%)	207 (24%)
Corticosteroids	223 (16%)	73 (15%)	150 (17%)
Immunosuppressants	34 (2.5%)	15 (3.0%)	19 (2.2%)

2 Values are No. (%) or median [inter-quartile range].

3 Abbreviations: ACE = angiotensin converting enzyme; ARB = angiotensin receptor blockers; COPD = chronic obstructive
4 pulmonary disease

5 * Confirmed or probable COVID-19 with no alternative diagnosis

1

2 **Figure Legends**

3 **Figure 1.** Flow diagram of study population.

4

5 **Figure 2.** Radar plot of the clinical features of patients with (a) an adjudicated diagnosis of
6 confirmed or probable COVID-19 and those with an alternative diagnosis, and (b) confirmed
7 COVID-19 and those with probable COVID-19

8

9 *The following features used to adjudicate the diagnosis are illustrated: fever, systemic symptoms*
10 *(e.g. myalgia, fatigue, and arthralgia), upper respiratory tract symptoms, lower respiratory tract*
11 *symptoms, gastrointestinal symptoms, neurological symptoms, lymphopenia, systemic*
12 *inflammation, radiological features of infection.*

13

14 **Figure 3.** Forest plot of the (a) sensitivity and (b) negative predictive value of the index
15 combined nasal and throat swab for a diagnosis of confirmed or probable COVID-19 stratified
16 by subgroups

17

18 **Figure 4.** Sensitivity of serial testing using the combined nasal and throat swab for the primary
19 (confirmed or probable COVID-19) and secondary (confirmed COVID-19) outcome.

Figure 1.

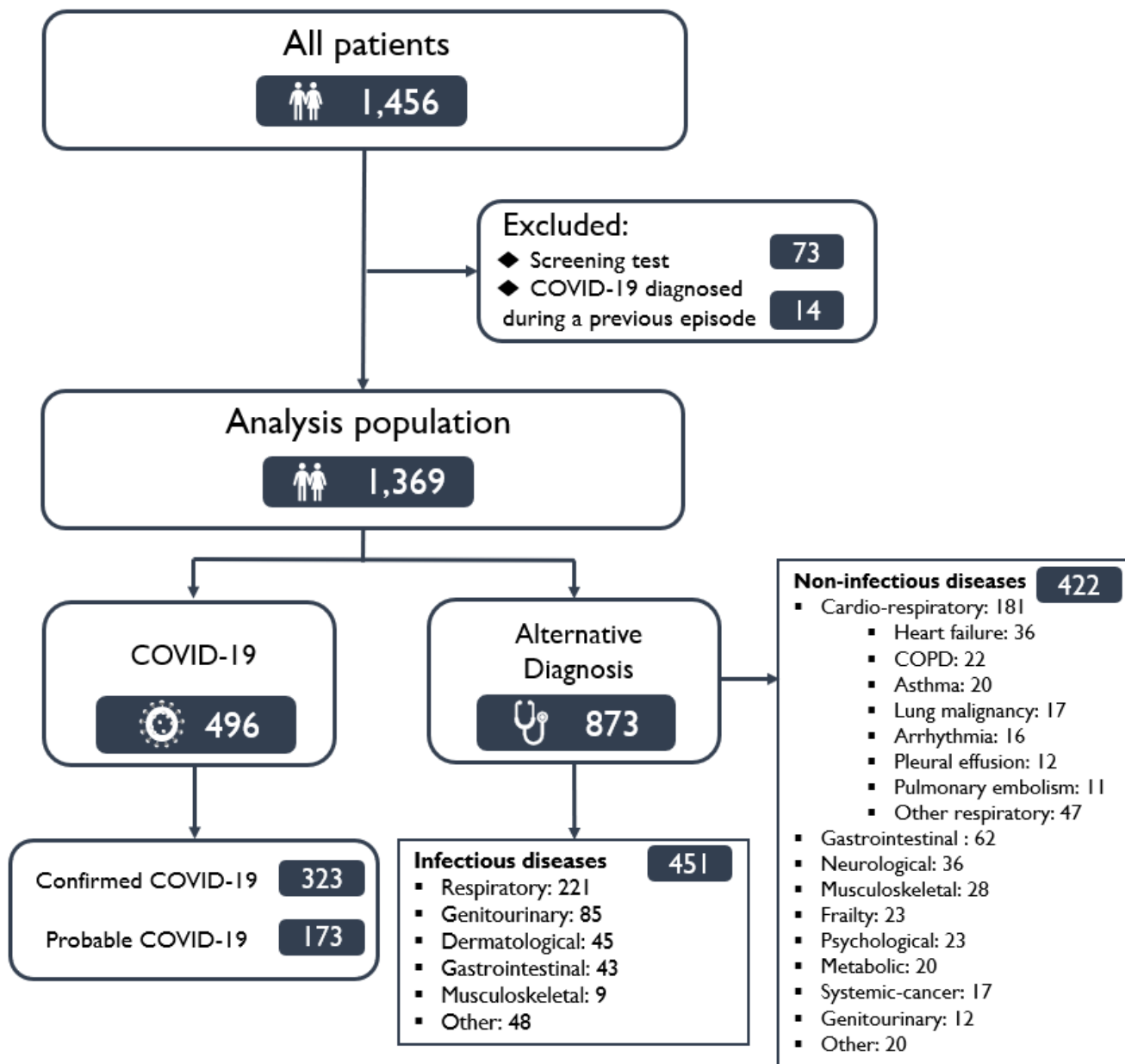
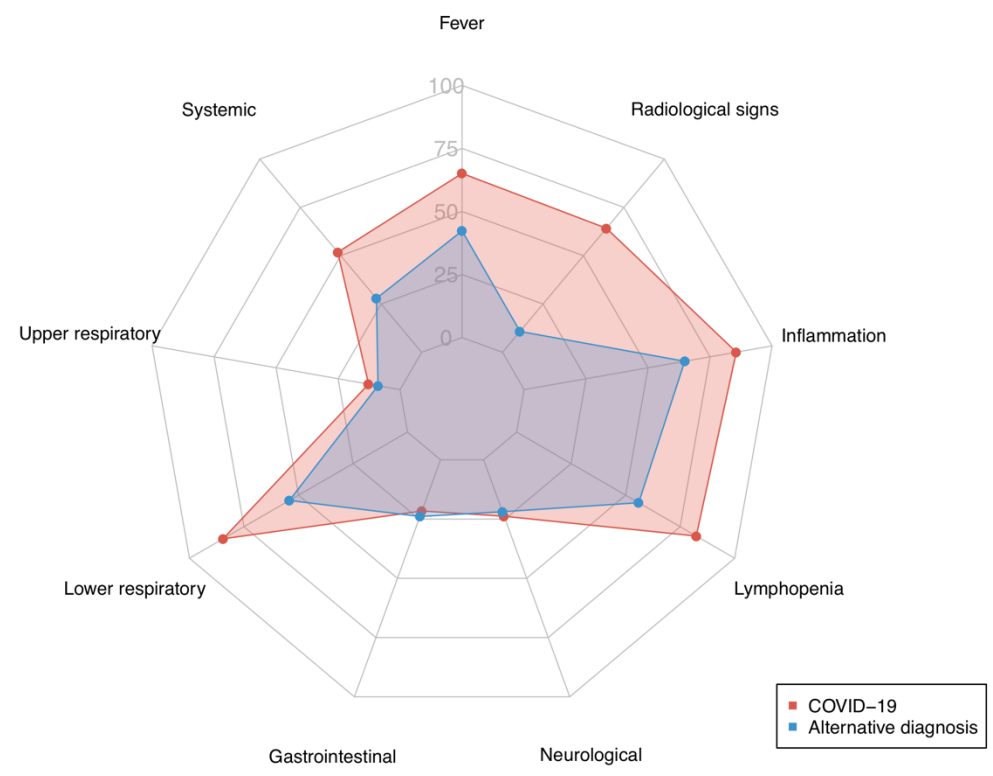
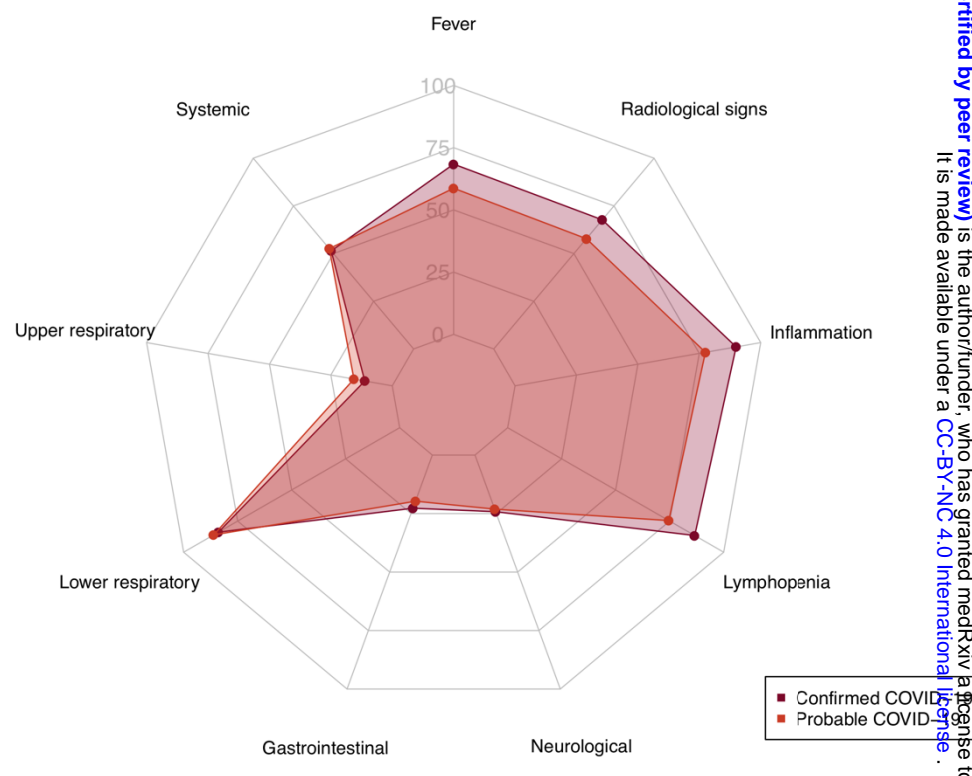


Figure 2.

(a)



(b)

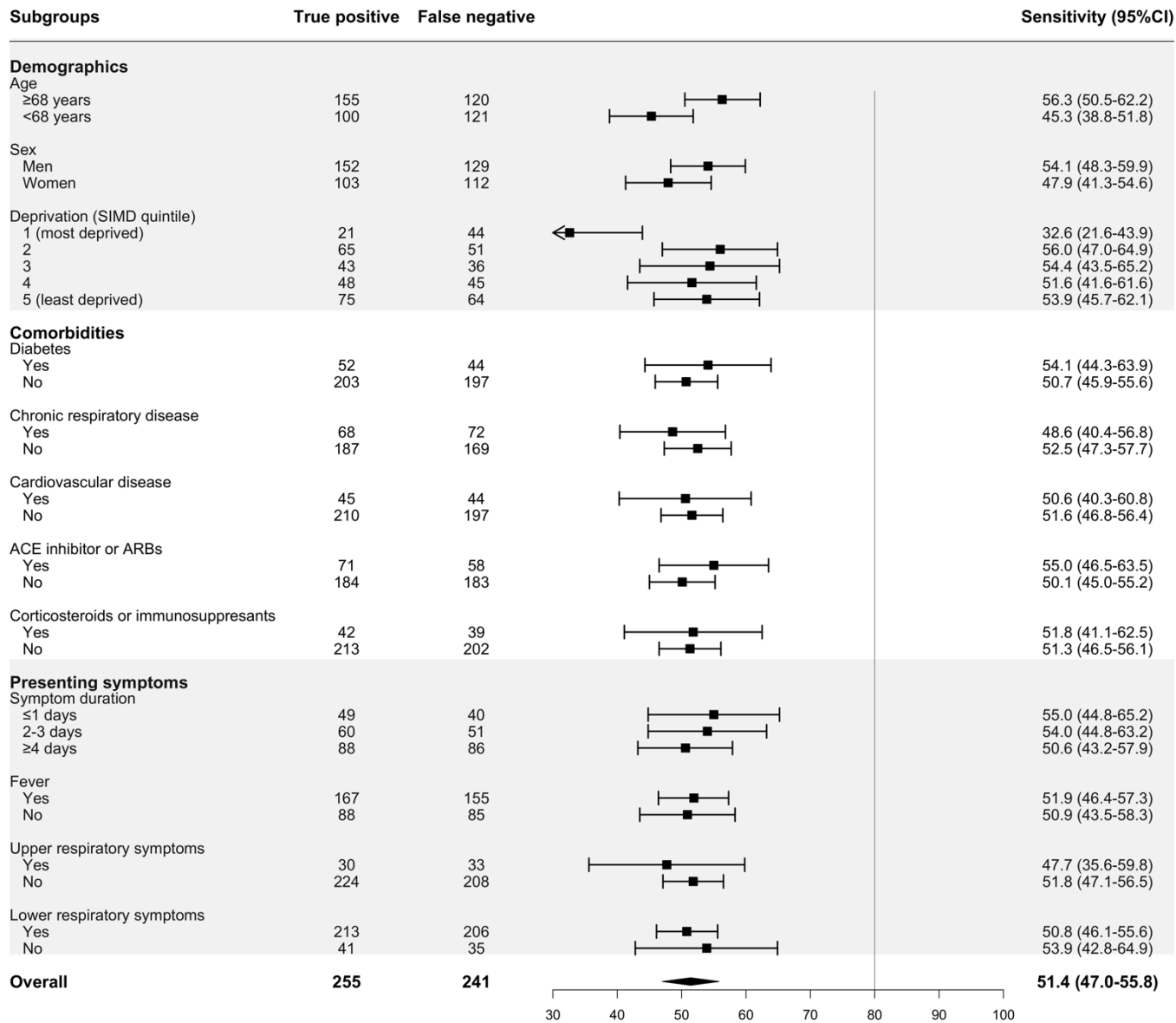


1 **Figure 3.**

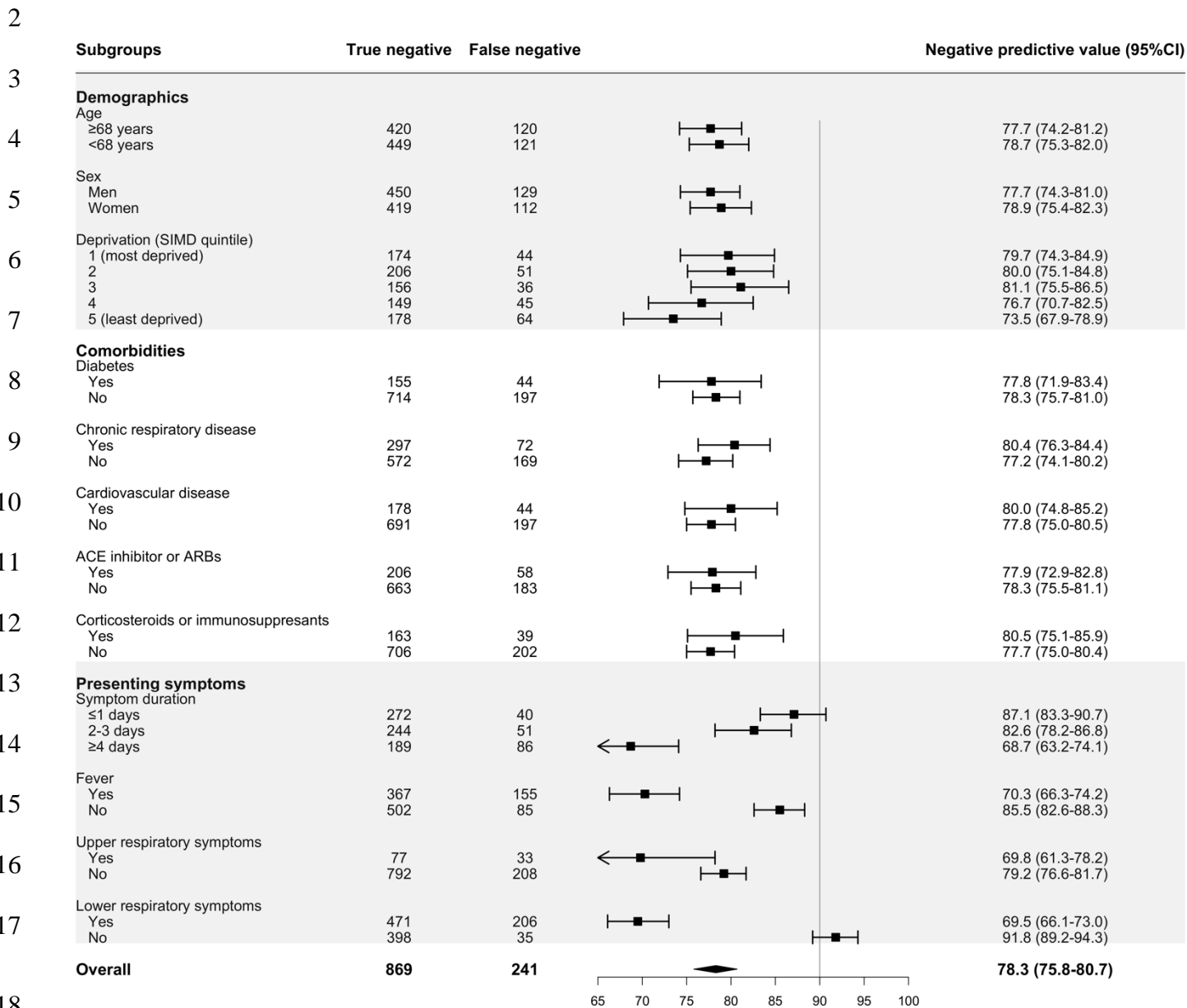
2

3 **(a)**

4



1 (b)



1 **Figure 4.**

