

1 Major Article submitted to *Journal of Infectious Diseases*:

2  
3 **Regional differences in vaccine uptake and serological responses to vaccine and**  
4 **circulating strains of H1N1 viruses among patients with confirmed influenza**

5  
6 Ashley L. Fink<sup>1</sup>, Hsuan Liu<sup>1</sup>, Kathryn Shaw-Saliba<sup>1,2</sup>, Thomas Mehoke<sup>3</sup>, Jared Evans<sup>3</sup>,  
7 Zhen-Ying Liu<sup>4</sup>, Mitra Lewis<sup>2</sup>, Lauren Sauer<sup>2</sup>, Peter Thielen<sup>3</sup>, Kuan-Fu Chen<sup>4</sup>, Richard  
8 Rothman<sup>2</sup>, Sabra L. Klein<sup>1,5,6,\*</sup>, Andrew Pekosz<sup>1, 2, 7,\*</sup>

9  
10 <sup>1</sup>W. Harry Feinstone Department of Molecular Microbiology and Immunology, The Johns  
11 Hopkins Bloomberg School of Public Health, Baltimore, Maryland 21205 USA;

12 <sup>2</sup>Department of Emergency Medicine, Johns Hopkins University School of Medicine,  
13 Baltimore, Maryland 21205 USA;

14 <sup>3</sup>Research and Exploratory Development Department, Johns Hopkins Applied Physics  
15 Laboratory, Laurel, Maryland 20723 USA;

16 <sup>4</sup>Department of Emergency Medicine, Clinical Informatics and Medical Statistics  
17 Research Center, Keelung Chang Gung Memorial Hospital, Chang Gung University,  
18 Keelung and Taoyuan City, 33302 Taiwan;

19 <sup>5</sup>Department of Biochemistry and Molecular Biology, The Johns Hopkins Bloomberg  
20 School of Public Health, Baltimore, Maryland 21205 USA;

21 <sup>6</sup>Department of International Health, The Johns Hopkins Bloomberg School of Public  
22 Health, Baltimore, Maryland 21205 USA;

23 <sup>7</sup>Department of Environmental Health and Engineering, The Johns Hopkins Bloomberg  
24 School of Public Health, Baltimore, Maryland 21205 USA.

25  
26 **Running title:** Antibodies to H1N1 influenza viruses (40 characters max)

27 **Key Words:** H1N1 influenza, human surveillance, neutralizing antibody, seasonal  
28 influenza vaccine

29 **Manuscript statistics:**

30 **Abstract:**

31 **Text:** 3500 max (currently 3500)

32 **Number of figures:** 4 (7 tables and figures max; 4 panels per figure)

33 **Number of tables:** 3 (can have up to 25 MB of online suppl info)

34 **References:**

35 **Financial support:** This work was supported by the NIH/NIAID Center of Excellence in  
36 Influenza Research and Surveillance contracts HHS N272201400007C and HHS  
37 N272201400006C.

38 **Disclosures:** The authors report no conflicts of interest

39  
40 \*Correspondence:

41 Sabra L. Klein, Ph.D., [sklein2@jhu.edu](mailto:sklein2@jhu.edu), 410-955-8898

42 Andrew Pekosz, Ph.D., [apekosz1@jhu.edu](mailto:apekosz1@jhu.edu), 410-502-9306

43

44 **Background.** Seasonal epidemics of influenza are often characterized through national  
45 or international surveillance efforts to determine vaccine efficacy and vaccine strain  
46 selection, but they do not provide detailed information about local variations in factors  
47 that can influence influenza cases and disease severity.

48  
49 **Methods.** Surveillance for influenza like illness was performed in Emergency Medicine  
50 Departments in Taipei, Taiwan and Baltimore, Maryland during the winter of 2015-16.  
51 Detailed demographic and clinical data were obtained. Nasal swabs or washes were  
52 collected for influenza virus diagnosis, sequencing and isolation. Serum was collected  
53 to determine neutralizing antibody levels.

54  
55 **Results.** H1N1 viruses dominated both sites, but more influenza cases occurred in  
56 Taipei compared to Baltimore. H1 HA clade diversity was greater in Taipei. Vaccination  
57 rates were lower in Taipei than Baltimore, but vaccination was associated with an  
58 increase in serum neutralizing antibodies to recent H1N1 strains in Taipei, but not  
59 Baltimore. There was a higher level of preexisting immunity to circulating H1N1 strains  
60 in Baltimore.

61  
62 **Conclusions.** Regional differences in preexisting immunity and H1N1 strain circulation  
63 may have contributed to the vastly different 2015-16 influenza seasons in Taipei and  
64 Baltimore and suggest immune responses to vaccination can be affected by the degree  
65 of preexisting immunity in the population.

66 Influenza causes disease in the human population and the specific strain of virus that is  
67 circulating, the levels of preexisting immunity to circulating viruses, vaccine uptake,  
68 vaccine strain match to circulating virus strains, and the presence of mutations that  
69 modulate virus fitness all contribute to the magnitude of seasonal cases and disease  
70 severity [1, 2]. Other factors impact the susceptibility to influenza in a strain independent  
71 manner, including age, immune status, pregnancy, gender, and the presence of co-  
72 morbidities [2-4].

73

74 The 2015-16 influenza season in the Northern hemisphere was dominated by H1N1  
75 Influenza A virus, with significant differences in the number of cases and disease  
76 severity across different countries [5]. In contrast, East and Southeast Asia experienced  
77 a particularly strong influenza season [5]. Serological assays using ferret antiserum  
78 indicated circulating H1N1 viruses were antigenically similar to the 2015-16 vaccine  
79 strain [6-9]. Surveillance for influenza-like illness (ILI) in 2015-16 was performed in the  
80 Emergency Departments (ED) of Chang Gung Memorial Hospital (CGMH), Taipei,  
81 Taiwan and the Johns Hopkins Medical Institution (JHMI), Baltimore, Maryland. The  
82 influenza season in Taipei was more severe than in Baltimore and factors including  
83 differences in circulating virus strains, vaccination rates, serum neutralizing antibody  
84 levels after vaccination, antibody cross reactivity between vaccine and circulating  
85 strains, and levels of preexisting immunity contributed to the different influenza seasons  
86 at the two surveillance sites.

87

88 **Materials and Methods**

89 **Human sample collection and ethics**

90 The human subjects protocol was reviewed and approved by the JHMI Institutional  
91 Review Board (IRB) and the CGMH IRB (IRB00052743). This protocol allowed for the  
92 enrollment of influenza positive, negative, and asymptomatic patients from the JHMI  
93 and CGMH ED with informed consent. For each patient, nasal pharyngeal (NP) swab or  
94 nasal wash (NW) and 10 ml of blood were collected at enrollment (i.e., time of  
95 presentation and positive influenza test,  $\leq 7$  days after the onset of symptoms). NP  
96 swabs were tested for influenza A virus using the CepheidGeneExpert© test. Blood was  
97 collected in Vacutainer tubes (BD), serum was separated and stored at  $-70^{\circ}\text{C}$ . The  
98 patient's basic demographics (i.e., age, ethnicity, race, gender, co-morbidities, and  
99 medications) were collected using data collection forms. Disease severity data (i.e., use  
100 of oxygen, hospital admission, disease outcomes) were collected during a follow up  
101 conversation and by chart review. For vaccination status, patients were asked if they  
102 received an influenza vaccine for the current season (2015-2016).

103

104 **Virus sequencing and phylogenetic analysis**

105 Viral RNA isolation and sequencing was performed as previously described [10, 11] and  
106 the phylogenetic analysis was performed as previously described [12] by comparing the  
107 full-length nucleotide sequence of the hemagglutinin (HA) open reading frame from  
108 representative strains of all clades of H1N1 2009 pandemic viruses retrieved from the  
109 Global initiative on sharing all influenza data (GISAID). Trees were viewed and colored  
110 using FigTree and HA clades were identified by adding known clade references to these  
111 trees and identifying branches for the 6B, 6B.1, and 6B.2 clades. Clade 6B.1 was

112 defined by HA1 amino acid substitutions S84N, S162N and I216T; and clade 6B.2 was  
113 defined by HA1 amino acid substitutions V152T and V173I and HA2 amino acid  
114 substitutions E164G and D174E. Sequences generated in the study were submitted to  
115 GenBank NCBI Influenza Virus Database (**Supplementary Table 1**).

116

### 117 **Cell cultures**

118 Madin-Darby canine kidney (MDCK) cells were used to grow all viruses and were  
119 cultured in Dulbecco's modified Eagle medium (DMEM; Sigma) with 10% fetal bovine  
120 serum (Gibco), 100 µg/ml of penicillin and 100 µg/ml of streptomycin (Quality  
121 Biological), and Glutamax (Gibco) at 37°C and 5% CO<sub>2</sub>. Human nasal epithelial cell  
122 (hNEC) cultures were isolated from non-diseased tissue after endoscopic sinus surgery  
123 for non-infection related conditions and grown at air-liquid interface (ALI). The hNEC  
124 isolation, differentiation and culture conditions have been described in detail previously  
125 [13].

126

### 127 **Vaccine viruses**

128 A recombinant influenza virus encoding the HA protein derived from the sequence of  
129 A/Michigan/45/2015-like egg-adapted virus (A/Mich/45/15; GISAID Accession no.:  
130 EPI685579) was used as the A/Mich/45/15 vaccine virus for serology assays. The HA  
131 protein has an egg-adapted mutation at position 223 (glutamine (Q) to arginine (R);  
132 Q223R) on the HA protein. A/Mich/45/15 virus was generated using a 12-plasmid  
133 influenza reverse genetic system [14, 15] with plasmids encoding the HA and the

134 neuraminidase (NA) of the A/Mich/45/15-like virus and the remaining 6 viral gene  
135 segments derived from A/California/7/2009 (A/Cal/7/09) as described previously [16].

136

### 137 **Viral isolates from clinical samples used for serology and growth analysis**

138 Fluids from NP swabs or NW from influenza A virus positive individuals were used to  
139 isolate viruses by inoculating primary, differentiated hNEC cultures as previously  
140 described [12]. A representative viral isolate from each clade was used for serology  
141 assays and growth analysis on hNECs. The representative viral isolates used, include:  
142 A/Baltimore/0026/2016 (JHMI 6B.1), A/Linkou/0032/2015 (CGMH 6B.1),  
143 A/Linkou/0029/2015 (CGMH 6B.2), and A/Linkou/0030/2015 (CGMH 6B).

144

### 145 **Virus growth curves and TCID<sub>50</sub> assay**

146 Low-multiplicity of infection (MOI) growth curves were performed in quadruplicate by  
147 infecting hNECs in 24-well Transwell© inserts at an approximate MOI of 0.1 50% tissue  
148 culture infectious units (TCID<sub>50</sub>) per cell as described previously [15, 16].

149

### 150 **Ferret antisera**

151 Ferrets (male, Triple F Farms, Sayre, PA) were lightly anesthetized with isoflurane and  
152 intranasally inoculated with 10<sup>6</sup> TCID<sub>50</sub> in 1 ml PBS of A/Baltimore/0026/2016 (6B.1)  
153 (two ferrets) or A/Linkou/0029/2015 (6B.2) (two ferrets). After 21 days, animals were  
154 sacrificed to obtain sera. Animal experiments were approved by the St. Jude Children's  
155 Research Hospital Animal Care and Use Committee.

156

157 **Serum neutralization assay**

158 Human or ferret serum was used in microneutralization assays using MDCK cells as  
159 previously described [10]. The neutralizing antibody titer was calculated as the highest  
160 serum dilution that eliminated virus cytopathic effects in 50% of the wells.

161

162 **Statistical analysis**

163 Serology data were analyzed with a 2-way ANOVA followed by pairwise multiple  
164 comparisons or by 1-way ANOVA or students t-test. Fold change in antibody titers  
165 between different virus strains and across different sites were analyzed by Chi-square  
166 analysis. Virus replication kinetics were analyzed using a repeated measures 2-way  
167 ANOVA. Clinical data in tables 1-3 were analyzed by Chi-square analysis.

168

169 For multivariate analyses, the antibody titers were log transformed. All variables with  $p <$   
170  $0.2$  and beta coefficient  $> 0.1$  in the bivariate linear regression were evaluated with  
171 multivariate linear regression with Allen-Cady backward selection procedure, with  
172 priority determined by clinical relevance and existing literature support. We adopted the  
173 Akaike's Information Criteria and the Chi-square goodness of fit test to evaluate the  
174 model fitness. Interaction check was performed to evaluate the potential effect  
175 modification between vaccination, antibody titers, and significant risk factors. Because  
176 of the relative small sample size, we further performed propensity score weighting  
177 modeling, in order to simultaneously adjust multiple confounders. Confounders  
178 considered to influence the causal relationship between vaccination and antibody titers  
179 were modeled to generate the propensity of vaccination, with the propensity score used

180 as the weight to balance the potential confounding and evaluate the average treatment  
181 effect. Mean differences were considered statistically significant if  $p < 0.05$ .

182

## 183 **Results**

184 Influenza surveillance was performed in the ED at JHMI and at CGMH from November  
185 1, 2015 (week 44 of 2015) to April 30, 2016 (week 17 of 2016). The basic demographic  
186 and disease characteristics of patients reporting with ILI that were either confirmed to be  
187 infected (IAV+) or not (IAV-) in Baltimore (n=252) and in Taipei (n=245) are summarized  
188 in **Table 1**. In Baltimore, there was a racial difference, in which more Caucasian/white  
189 patients with ILI were IAV- (40.1%) than IAV+ (23.5%). For IAV vaccination in Baltimore,  
190 50.3% of IAV- patients received the 2015-16 seasonal vaccine compared to 29.8% in  
191 the IAV+ group. The Baltimore IAV- population had significantly more patients with  
192 multiple co-morbidities (50.3%) than the IAV+ population (35.3%). There was also a  
193 greater number of IAV- patients with ILI admitted to JHMI hospitals (44.3%) than IAV+  
194 patients (29.4%). In contrast, fewer differences were observed between the IAV+ and  
195 IAV- individuals with ILI from the Taipei population. Greater numbers of females as  
196 compared to males were present in the IAV+ group (65.5%) than the IAV- group  
197 (52.6%) in Taipei.

198

199 Enrollment weeks for IAV+ individuals were plotted (**Figure 1A and 1B**). Influenza A  
200 virus activity was lower and peaked later (mid-March; **Figure 1A**) in the Baltimore  
201 population and was higher and peaked earlier (January-February; **Figure 1B**) in the



202 Taipei population which was representative of the overall IAV activity in each country [6,  
203 7].

204  
205 Among the 233 IAV+ cases across the surveillance sites, 111 NW or NP swabs were  
206 processed for sequencing. H1N1 was the predominant IAV subtype circulating globally  
207 [6, 17, 18] and in both Baltimore and Taipei (**Figure 1A** and **1B**). One-hundred and  
208 three of the isolates (92.8%) were identified as H1N1 viruses and only 8 (7.2%) were  
209 H3N2 viruses. Seventy-nine of the 103 H1N1 clinical virus isolates yielded sufficient  
210 coverage of the HA segment and all belonged to clade 6 subgroup B (clade 6B), 6B.1 or  
211 6b.2 [19], with the latter two clades newly emerged in this season [20]. Phylogenetic  
212 analysis of the HA gene sequences from patients in Baltimore (red) or Taipei (blue)  
213 classified most isolates as clade 6B.1. Clade 6B.2 viruses made up a significant number  
214 of the isolates in Taipei, but were absent in Baltimore (**Figure 2A** and **2B**).

215  
216 A comparison of the patient populations of Baltimore and Taipei that were infected with  
217 H1N1 viruses revealed that these populations were similar in terms of demographics  
218 and disease severity (**Table 2**), with expected differences in race observed between  
219 sites. More patients with no known co-morbidities for severe influenza were infected in  
220 the Taipei population compared to Baltimore. Vaccine coverage was higher in the  
221 Baltimore population (31.6%) than the Taipei population (4.7%). These data show  
222 stronger influenza activity and H1N1 infection in Taipei compared to Baltimore.

223

224 Outside of race, there were no differences in the clinical or demographic characteristics  
225 of patients infected with clade 6B.1 viruses in Baltimore when compared to those  
226 infected with 6B.1 viruses in Taipei (**Supplementary Table 2**). Among patients infected  
227 with clade 6B.1 viruses at the two sites, there were no significant demographic  
228 differences. Likewise, there were no differences in Taipei patients infected with 6B.1  
229 compared to 6B.2 viruses (**Supplementary Table 2**), indicating that the disease  
230 incidence and severity differences between the Baltimore and Taipei sites were not  
231 driven by any specific demographic or clinical factor.

232

233 The amino acid mutations in the HA protein of circulating virus strains were mapped on  
234 the H1 HA protein crystal structure (**Figure 2C**). Clade 6B.1 viruses were characterized  
235 by mutations S84N, S162N, and I216T (purple), with an amino acid residue 162 on the  
236 Sa antigenic site (blue). Amino acid 216, along the 220 loop of the receptor-binding  
237 domain was adjacent to the Sb antigenic site (pink). The I216T mutation may be a  
238 compensatory mutation as a result of the S162N mutation [21]. Clade 6B.2 viruses  
239 contained two HA1 mutations: V152T, adjacent to the Sa and Sb antigenic sites and  
240 V173I, near the Ca1 antigenic site (yellow). In addition to the mutations in HA1, 6B.2  
241 viruses contained two mutations in HA2: E164G and D174E which were both on the  
242 surface of the HA stalk domain (**Figure 2C**). When compared to the vaccine strain  
243 A/Ca/7/09, both clade 6B.1 and 6B.2 viruses had 11 additional amino acid mutations  
244 (P83S, D97N, K163Q, S185T, S203T, A256T, K283E, I321V and HA2: E47K, S124N,  
245 and E172K), many of which were located on or near antigenic sites.

246

247 The replication efficiency of 6B.1 and 6B.2 clinical virus isolates was assessed using  
248 hNEC cultures. No significant differences in virus replication kinetics were detected  
249 (**Figure 2D**) with viruses isolated from the two surveillance sites.

250

251 Influenza-specific antibodies are considered the primary correlate of protection against  
252 influenza infection in humans [22]. Neutralizing antibody responses to the clade 6B.1  
253 virus were greater in patients from Baltimore than Taipei in serum collected at the time  
254 of enrollment (**Figure 3A**). The higher titer of anti-clade 6B.1 antibodies, but not  
255 antibodies to the vaccine strain, in the Baltimore population indicated higher titers of  
256 antibodies to circulating viruses that do not cross react with the vaccine strain and  
257 suggested that human antibodies can differentiate between the H1N1 circulating and  
258 vaccine strains.

259

260 We compared individuals that received the 2015-16 seasonal influenza vaccine with  
261 those that did not across the two surveillance sites. Although receipt of the seasonal  
262 vaccine did not affect neutralizing antibody responses to the vaccine or circulating  
263 viruses in patients from Baltimore (**Figure 3B**), neutralizing antibody responses from  
264 Taipei patients were significantly greater in vaccinated compared to unvaccinated  
265 patients (**Figure 3C**). We conclude that geographic location and presumably the history  
266 of exposure to circulating and vaccine strains of influenza impact the antibody response  
267 induced by vaccination.

268

269 The H1N1 component of the seasonal influenza vaccine was updated for the 2017-18  
270 influenza season from A/Cal/7/09 to clade 6B.1 A/Mich/45/15 [23], so we hypothesized  
271 that the baseline neutralizing antibody responses to this virus would be similar to  
272 responses to the 2015-16 circulating clade 6B.1 viruses. Both vaccinated and  
273 unvaccinated patients from Baltimore had cross-reactive neutralizing antibody  
274 responses to the A/Mich/45/15 vaccine virus, whereas in Taipei only vaccinated  
275 individuals had cross-reactive neutralizing antibody responses as compared to  
276 unvaccinated individuals (**Figure 4A**), indicating that vaccination could have regional  
277 differences in the induction of cross-reactive antibody responses.

278  
279 We analyzed the baseline neutralizing antibody titers to the A/Cal/7/09 and the  
280 A/Mich/45/15 vaccine strain. The serum cross-reactivity to the A/Mich/45/15 vaccine  
281 virus as compared to the A/Cal/7/09 vaccine virus was greater in Baltimore compared  
282 Taipei using a  $\geq 4$  fold increase in titer as a cutoff (**Figure 4B**) which was driven by  
283 differences among unvaccinated patients at the two surveillance sites. Using a more  
284 stringent cutoff of  $\geq 8$  fold increase in titer, there was still greater recognition of the  
285 A/Mich/45/15 vaccine virus among patients from Baltimore as compared to those from  
286 Taipei, with both unvaccinated and vaccinated populations driving the cross-site  
287 differences (**Figure 4B**), indicating there are regional differences in the recognition of  
288 vaccine strains and the circulating 6B.1 viruses (**Figure 3A and 4A**).

289  
290 The antigenic characterization of IAV isolates is traditionally measured in HAI assays  
291 using strain specific, post-infection ferret antisera [24] and HAI assays showed ferret

292 sera raised to circulating reference 6B.1 and 6B.2 viruses cross-reacted well with the  
293 A/Cal/7/09 vaccine virus [19]. Using sera from ferrets infected with the circulating H1N1  
294 virus strains from Baltimore and Taipei, there were greater neutralizing antibody  
295 responses to the clade 6B virus as compared with the A/Cal/7/09 vaccine virus (**Figure**  
296 **4C**). All ferrets had a  $\geq 4$  fold increase in titer specific to each of the circulating virus  
297 strains as compared to the A/Cal/7/09 vaccine strain (**Figure 4D**). Our data showed low  
298 cross-reactivity between the ferret sera raised to circulating H1N1 strains and the  
299 A/Cal/7/09 vaccine strain, indicating potential antigenic differences between the  
300 circulating and vaccine strains, and supporting the recommendation to update the H1N1  
301 component of the seasonal influenza vaccine.

302

303 Using an Allen-Cady modified stepwise multivariable regression model to control for  
304 confounding variables revealed increased age was consistently associated with lower  
305 titers (**Table 3**). In contrast, a significant association between age and neutralizing  
306 antibody titers in our univariate analysis was not observed (**Supplementary Figure 1**).  
307 Other factors that were associated with lower titers in different clades included male  
308 gender (A/Cal/7/09, 6B.1), steroid usage (6B), higher BMI (6B.2), being Asian (6B.1),  
309 and some socioeconomic factors. Although we did not observe gender differences in  
310 baseline neutralizing antibody titers in our univariate analysis (**Supplementary Figure**  
311 **2**), previous studies have established that males tend to have significantly lower  
312 neutralizing antibody titers to influenza as compared with females [25]. Receipt of the  
313 influenza vaccine was associated with higher baseline neutralizing antibody titers to the  
314 A/Cal/7/09 vaccine strain virus and the clade 6B and 6B.2 circulating viruses. In a

315 propensity score weighting model, receipt of the influenza vaccine resulted in higher  
316 neutralizing antibody titers to all viruses except the clade 6B.1 virus. In the multivariable  
317 regression, when the variable “Asian” was removed, vaccination was still significantly  
318 associated with higher baseline neutralizing antibody titers, indicating that there could  
319 be a confounding effect between being Asian and receipt of the influenza vaccine. In the  
320 effect modification multivariable regression analysis, we found that vaccinated patients  
321 from Taipei had consistently higher antibody titers across different clades, except 6B.2  
322 (**Table 3**). The observation that receipt of the influenza vaccine was associated with  
323 higher baseline neutralizing antibody titers to all viruses except the clade 6B.1 virus  
324 further confirms the recommendation to update the H1N1 vaccine virus to A/Mich/45/15,  
325 which is a clade 6B.1 virus.

326

## 327 **Discussion**

328 This study illustrates differences in influenza activity, pre-existing influenza immunity,  
329 and virus strain circulation in the 2015-16 influenza season across surveillance sites  
330 located in Baltimore, Maryland and Taipei, Taiwan. We conclude that regional factors as  
331 well as host demographic variables, including age, gender, and BMI, may play important  
332 roles in modulating receipt of seasonal influenza vaccines, vaccine-induced immunity,  
333 and severity of influenza disease.

334

335 The 2015-16 influenza season was characterized by increased H1N1 influenza cases in  
336 Taipei compared to Baltimore, with differences in the HA clades that circulated at each  
337 site, consistent with previous reports [26-28]. Clade 6B.2 viruses circulated in primarily

338 in Asia but never became a common clade globally. While specific amino acid changes  
339 near antigenic sites are present in clade 6B.2 viruses, they appear to be antigenically  
340 indistinguishable from clade 6B.1 viruses using human and ferret serum. Both H1N1  
341 clades had similar replication kinetics in hNEC cultures, indicating there were no  
342 inherent differences in virus fitness between the two clades. Since the 2016-17 season,  
343 only H1N1 6B.1 viruses have been detected and have evolved to different clade 6B.1  
344 subclades which are continuing circulation worldwide [23, 29-32].

345  
346 The demographic characteristics of the Baltimore and Taipei sites were similar, except  
347 for race. It is difficult to ascertain the contribution of race to influenza susceptibility given  
348 these differences. There was a significantly larger number of influenza cases in  
349 individuals with no known influenza co-morbidities in Taipei compared to Baltimore,  
350 indicating a greater degree of susceptibility in the population in Taipei, which is  
351 supported by the overall lower vaccine rate and levels of neutralizing antibodies to  
352 circulating human H1N1 present in that population. The overall lower antibody titers to  
353 6B.1 viruses in Taipei were surprising given that antigenically related viruses have been  
354 circulating globally since 2009. Vaccination, however, did not affect neutralizing  
355 antibody titers in patients from Baltimore, perhaps due to higher levels of preexisting  
356 H1N1 immunity in that population. These data suggest that regional differences in  
357 influenza vaccine uptake and immune responses to vaccination are present and can  
358 impact the overall susceptibility of the population to influenza virus infection.

359

360 Global 2015-16 influenza surveillance in most countries indicated the circulating H1N1  
361 viruses were antigenically similar to the vaccine A/Cal/7/09 [6-9, 17, 33, 34]. In our  
362 study, antigenic differences between the H1N1 vaccine strain and circulating viruses in  
363 2015-16 were detected using human serum and serum from ferrets infected with  
364 circulating H1N1 viruses in neutralization assays. Consistent with those observations,  
365 higher neutralizing antibody responses to the A/Mich/45/15 vaccine strain compared to  
366 the A/Cal/7/09 vaccine strain were detected. Studies also showed that humans elicited  
367 differential antibodies recognizing cell-derived or egg-adapted vaccines which was  
368 driven by the egg-adaption mutation Q226R (which is Q223R in H1 numbering) of  
369 A/Cal/7/09, thus causing some individuals to better recognize the vaccine strain in HAI  
370 assays [35-37]. However, we did not see significant differences in neutralization titers of  
371 6B.1 circulating virus compared to the A/Mich/45/15 vaccine containing Q223R (Figure  
372 3A 6B.1 and Figure 4A). Even though ferret antiserum were unable to distinguish  
373 between A/Cal/7/09 and A/Mich/45/15, the WHO changed the H1N1 vaccine component  
374 to A/Mich/45/15 in the 2017 Southern hemisphere vaccine and subsequently in the  
375 2017-18 Northern hemisphere because circulating viruses were poorly recognized by  
376 some post-vaccination adult human serum [38, 39]. Our use of human sera and virus  
377 neutralization assays strongly indicate antigenic differences between the vaccine and  
378 circulating strains.

379  
380 We did not observe any relationship between neutralizing antibody titers and specific  
381 age-ranges [40-43], but this is most likely due to small sample sizes in most age groups.  
382 Although more females presented as IAV+, at least in Taipei, male gender, steroid use,



383 and higher BMI correlated with lower neutralizing titers, as these are associated with an  
384 impaired humoral immune response [44, 45].

385  
386 There are limitations of this study. Our acute influenza detection protocol does not  
387 include pediatric patients so we are unable to assess preexisting immunity and case  
388 numbers in age groups <18 years of age. Because only one surveillance site is used in  
389 each country, we are unable to capture any regional differences within the United States  
390 or Taiwan. Finally, the limited number of patients enrolled in our studies prevents us  
391 from assessing the significance of a number of clinical and demographic factors on  
392 influenza susceptibility and disease severity.

393  
394 Although seasonal influenza epidemics are global, regional differences in human  
395 populations can impact the number and severity of influenza cases most likely through  
396 different exposure histories to circulating and vaccine strains. Vaccine efficacy and  
397 preexisting immunity to vaccine and circulating strains should be characterized at the  
398 local, national, and global levels to achieve accurate and complete assessments of the  
399 factors that impact influenza in any year.

400

401  
402  
403  
404  
405  
406  
407  
408  
409  
410  
411  
412  
413  
414  
415  
416  
417

## **Acknowledgements**

We would like to thank the clinical coordinators at JHMI and CGMH who were responsible for the data and sample collection. We also thank Stacey Schultz-Cherry, Victoria Meliopoulos, and the St. Jude Center of Excellence in Influenza Research and Surveillance (CEIRS) for providing the ferret antisera. We thank Deena Blumenkrantz and Robert Stenzel for providing technical assistance in growing influenza viruses and Dr. Andrew Lane for providing hNEC cultures.

## **Funding**

This work was supported by the NIH/NIAID Center of Excellence in Influenza Research and Surveillance contract HHS N2772201400007C (R.R., K.F.C., S.L.K and A.P.), T32 AI007417 (A.L.F.), the Richard Eliasberg Family Foundation and the Research Center for Emerging Viral Infections from The Featured Areas Research Center Program within the framework of the Higher Education Sprout Project by the Ministry of Education (MOE) in Taiwan and the Ministry of Science and Technology (MOST), Taiwan MOST 109-2634-F-182-001 (Y.N.G.).

418 **Figure legends**

419 **Figure 1. Numbers of Influenza A virus isolates defined by clades with enrollment**  
420 **dates in the two surveillance sites, Baltimore (JHMI) and Taipei (CGMH).** Samples  
421 collected from patients with influenza-like illness (ILI) between week 44 2015 (starting  
422 Nov 2015) and week 16 2016 (ending April 2016) were tested for influenza A viruses  
423 (IAVs) and the IAV+ samples were subtyped and clade-defined by deep sequencing. (A)  
424 JHMI, (B) CGMH. Enrollments at week 6 of 2016 in Taipei were paused due to the  
425 Chinese New Year holidays.

426

427 **Figure 2. H1N1 HA phylogenetic analysis from clinical virus isolates.** Clinical nasal  
428 pharyngeal (NP) swabs or nasal washes (NW) of IAV+ patients from Baltimore (JHMI)  
429 and Taipei (CGMH) were used to sequence the HA gene segment by deep sequencing.  
430 (A) HA phylogenetic tree representing the 2015-16 H1N1 viruses from individuals at  
431 Baltimore (red) and Taipei (blue) along with the 2015-16 vaccine strain  
432 A/California/7/2009 (green) and the 2017-18 vaccine strain A/Michigan/45/2015 (green).  
433 Representative isolates for serology assays and growth analysis are highlighted in  
434 yellow. (B) Numbers of clinical virus isolates in clades 6B.1, 6B.2 and 6B were  
435 identified. (C) HA protein structure of the clade 6B.1 and 6B.2 viruses are shown on a  
436 H1 HA crystal structure of H1N1 virus (PDB:3LZG) using PyMOL. Antigenic sites Sa,  
437 Sb, Ca1, Ca2, and Cb are indicated [46]. Amino acids are used to defined 6B.1 (purple)  
438 and 6B.2 (pink) and other amino acid differences compared with A/California/7/2009  
439 (dark green) are indicated. Enlarged 6B.2 head shows that aa173 (in pick spheres) is  
440 not on the surface of HA, and is under site Ca1 (in sticks). (D) Viruses isolated from

441 individuals at both Baltimore and Taipei were propagated on hNECs. Multistep growth  
442 curves were performed on hNECs at 32°C with the representative viral isolates: clade  
443 6B.1 virus from Baltimore and of clade 6B.1, 6B.2, and 6B viruses from Taipei.  
444 Representative data from 2 independent experiments are shown. Dotted line indicates  
445 limit of detection.

446

447 **Figure 3. Baseline human serum neutralizing antibody titers to vaccine and**  
448 **circulating strains of H1N1.** Human serum was collected at the time of enrollment and  
449 neutralizing antibody (nAb) titers to the vaccine strain A/Cal/7/09, and representative  
450 circulating strains 6B.1, 6B.2, and 6B were determined by neutralization assay. (A)  
451 Baseline neutralizing antibody titers from individuals at Taipei (CGMH) (n=46) and  
452 Baltimore (JHMI) (n=45), (B) vaccinated individuals (n=22) and unvaccinated individuals  
453 (n=23) from Baltimore, and (C) vaccinated individuals (n=7) and unvaccinated  
454 individuals (n=39) from Taipei.

455

456 **Figure 4. Human and ferret serum reactivity to H1N1 vaccines strains.** Human  
457 serum was collected at the time of enrollment and neutralizing antibody (nAb) titers to  
458 the H1N1 vaccine strains A/Cal/7/09 and A/Mich/45/15 were determined by  
459 neutralization assay. (A) nAb titers to A/Mich/45/15 from vaccinated (n=22) and  
460 unvaccinated (n=23) individuals from Baltimore (JHMI) and vaccinated (n=7) and  
461 unvaccinated (n=39) individuals from Taipei (CGMH). To compare the baseline nAb  
462 titers between vaccine strains A/Cal/7/09 and A/Mich/45/15, individual baseline nAb  
463 titers to A/Mich/45/15 and A/Cal/7/09 in vaccinated and unvaccinated individuals from

464 Baltimore and Taipei were plotted (B). Male ferrets were infected with either  
465 A/Baltimore/0026/2016 (n=2) or A/Linkou/0029/2015 (n=2) and 21 days later serum was  
466 collected to determine the neutralizing antibody responses to A/Cal/7/09 and 6B.1,  
467 6B.2, and 6B circulating viruses (C). The individual ferret serum neutralizing antibody  
468 responses to the A/Cal/7/09 virus as compared to the circulating strains (6B.1, 6B.2, 6B)  
469 was then plotted (D).

470

471 **Supplementary Figure 1. Univariate analysis of baseline neutralizing antibody**  
472 **titers based on estimated birth year.** Each individual's baseline neutralizing antibody  
473 titers to the A/Cal/7/09, 6B, 6B.2, and 6B.1 viruses were plotted against their estimated  
474 birth year. Individuals from both sites (A), individuals from Baltimore (JHMI) (B) and  
475 individuals from Taipei (CGMH) (C) are represented. Correlation analysis was  
476 performed and no significant correlations were observed.

477

478 **Supplementary Figure 2. Univariate analysis of gender differences in baseline**  
479 **neutralizing antibody titers.** Baseline neutralizing antibody titers to the A/Cal/7/09, 6B,  
480 6B.2, and 6B.1 viruses were evaluated in individuals from Baltimore (JHMI) and Taipei  
481 (CGMH) and data were stratified by gender. Data were first stratified by gender alone  
482 (A) and then further stratified based on both gender and vaccine status (B).

483

484 **References**

- 485
- 486 1. Petrova VN, Russell CA. The evolution of seasonal influenza viruses. *Nat Rev Microbiol*
  - 487 **2018**; 16:60.
  - 488 2. Paules C, Subbarao K. Influenza. *Lancet* **2017**; 390:697-708.
  - 489 3. vom Steeg LG, Klein SL. SeXX Matters in Infectious Disease Pathogenesis. *PLoS Pathog*
  - 490 **2016**; 12:e1005374.
  - 491 4. Vermillion MS, Klein SL. Pregnancy and infection: using disease pathogenesis to inform
  - 492 vaccine strategy. *NPJ Vaccines* **2018**; 3.
  - 493 5. World\_Health\_Organization. Weekly epidemiological record Nos. 51/52. Vol. 91,
  - 494 **2016**:601-24.
  - 495 6. Davlin SL, Blanton L, Kniss K, et al. Influenza Activity - United States, 2015-16 Season and
  - 496 Composition of the 2016-17 Influenza Vaccine. *MMWR Morb Mortal Wkly Rep* **2016**;
  - 497 65:567-75.
  - 498 7. Taiwan\_CDC. Taiwan Influenza Express 2015-16 Flu Season 2016 Week 20. Available at:
  - 499 <https://www.cdc.gov.tw/En/File/Get/VCNkIvtTOiuP1vo1gIG89A>.
  - 500 8. Chambers C, Skowronski DM, Sabaiduc S, et al. Interim estimates of 2015/16 vaccine
  - 501 effectiveness against influenza A(H1N1)pdm09, Canada, February 2016. *Euro Surveill*
  - 502 **2016**; 21:30168.
  - 503 9. Komissarov A, Fadeev A, Sergeeva M, et al. Rapid spread of influenza A(H1N1)pdm09
  - 504 viruses with a new set of specific mutations in the internal genes in the beginning of
  - 505 2015/2016 epidemic season in Moscow and Saint Petersburg (Russian Federation).
  - 506 *Influenza Other Respir Viruses* **2016**; 10:247-53.
  - 507 10. Ursin RL, Liu H, Powell HR, et al. Differential Antibody Recognition of H3N2 Vaccine and
  - 508 Seasonal Influenza Virus Strains Based on Age, Vaccine Status, and Sex in the 2017-2018
  - 509 Season. *J Infect Dis* **2020**; 222:1371-82.
  - 510 11. Zhou B, Donnelly ME, Scholes DT, et al. Single-reaction genomic amplification
  - 511 accelerates sequencing and vaccine production for classical and Swine origin human
  - 512 influenza A viruses. *Journal of virology* **2009**; 83:10309-13.
  - 513 12. Blumenkrantz DR, Mehoke T, Shaw-Saliba K, et al. Identification of H3N2 NA and PB1-
  - 514 F2 genetic variants and their association with disease symptoms during the 2014-15
  - 515 influenza season. *bioRxiv* **2020**:2020.02.20.956979.
  - 516 13. Fischer WA, 2nd, King LS, Lane AP, Pekosz A. Restricted replication of the live
  - 517 attenuated influenza A virus vaccine during infection of primary differentiated human
  - 518 nasal epithelial cells. *Vaccine* **2015**; 33:4495-504.
  - 519 14. Fodor E, Devenish L, Engelhardt OG, Palese P, Brownlee GG, Garcia-Sastre A. Rescue of
  - 520 influenza A virus from recombinant DNA. *Journal of virology* **1999**; 73:9679-82.
  - 521 15. McCown MF, Pekosz A. The influenza A virus M2 cytoplasmic tail is required for
  - 522 infectious virus production and efficient genome packaging. *Journal of virology* **2005**;
  - 523 79:3595-605.
  - 524 16. Klein EY, Blumenkrantz D, Serohijos A, et al. Stability of the Influenza Virus
  - 525 Hemagglutinin Protein Correlates with Evolutionary Dynamics. *mSphere* **2018**; 3.
  - 526 17. Broberg E, Melidou A, Prosenc K, et al. Predominance of influenza A(H1N1)pdm09 virus
  - 527 genetic subclade 6B.1 and influenza B/Victoria lineage viruses at the start of the 2015/16
  - 528 influenza season in Europe. *Euro Surveill* **2016**; 21.

- 529 18. Santos KC, Silva DB, Sasaki NA, Benega MA, Garten R, Paiva TM. Molecular epidemiology  
530 of influenza A(H1N1)PDM09 hemagglutinin gene circulating in Sao Paulo State , Brazil:  
531 2016 anticipated influenza season. *Rev Inst Med Trop Sao Paulo* **2017**; 59:e9.
- 532 19. European\_Centre\_for\_Disease\_Prevention\_and\_Control. Influenza virus characterisation  
533 summary Europe, May 2016. Available at:  
534 [https://ecdc.europa.eu/sites/portal/files/media/en/publications/Publications/influenza-](https://ecdc.europa.eu/sites/portal/files/media/en/publications/Publications/influenza-virus-characterisation-may-2016.pdf)  
535 [virus-characterisation-may-2016.pdf](https://ecdc.europa.eu/sites/portal/files/media/en/publications/Publications/influenza-virus-characterisation-may-2016.pdf).
- 536 20. Bedford T, Neher R. Seasonal influenza circulation patterns and projections for 2016-  
537 2017. Available at:  
538 [https://github.com/nextstrain/static/blob/master/content/reports/01-flu-vaccine-](https://github.com/nextstrain/static/blob/master/content/reports/01-flu-vaccine-selection/03-2016-september.md)  
539 [selection/03-2016-september.md](https://github.com/nextstrain/static/blob/master/content/reports/01-flu-vaccine-selection/03-2016-september.md).
- 540 21. Altman MO, Angel M, Košík I, et al. Hemagglutinin Glycan Clock Guides Human Influenza  
541 A Virus Evolution. *bioRxiv* **2017**.
- 542 22. Soema PC, Kompier R, Amorij JP, Kersten GF. Current and next generation influenza  
543 vaccines: Formulation and production strategies. *Eur J Pharm Biopharm* **2015**; 94:251-63.
- 544 23. Blanton L, Wentworth DE, Alabi N, et al. Update: Influenza Activity - United States and  
545 Worldwide, May 21-September 23, 2017. *MMWR Morb Mortal Wkly Rep* **2017**; 66:1043-  
546 51.
- 547 24. Stohr K, Bucher D, Colgate T, Wood J. Influenza virus surveillance, vaccine strain  
548 selection, and manufacture. *Methods Mol Biol* **2012**; 865:147-62.
- 549 25. Engler RJ, Nelson MR, Klote MM, et al. Half- vs full-dose trivalent inactivated influenza  
550 vaccine (2004-2005): age, dose, and sex effects on immune responses. *Arch Intern Med*  
551 **2008**; 168:2405-14.
- 552 26. Clark AM, DeDiego ML, Anderson CS, et al. Antigenicity of the 2015-2016 seasonal H1N1  
553 human influenza virus HA and NA proteins. *PloS one* **2017**; 12:e0188267.
- 554 27. Uda K, Shoji K, Koyama-Wakai C, et al. Clinical characteristics of influenza virus-induced  
555 lower respiratory infection during the 2015 to 2016 season. *J Infect Chemother* **2018**;  
556 24:407-13.
- 557 28. Zhao XN, Zhang HJ, Li D, et al. Whole-genome sequencing reveals origin and evolution of  
558 influenza A(H1N1)pdm09 viruses in Lincang, China, from 2014 to 2018. *PloS one* **2020**;  
559 15:e0234869.
- 560 29. Blanton L, Alabi N, Mustaquim D, et al. Update: Influenza Activity in the United States  
561 During the 2016-17 Season and Composition of the 2017-18 Influenza Vaccine. *MMWR*  
562 *Morb Mortal Wkly Rep* **2017**; 66:668-76.
- 563 30. European\_Centre\_for\_Disease\_Prevention\_and\_Control. Influenza virus  
564 characterisation, summary Europe, June 2017: Stockholm: ECDC, **2017**.
- 565 31. Neher RA, Bedford T. nextflu: real-time tracking of seasonal influenza virus evolution in  
566 humans. *Bioinformatics* **2015**; 31:3546-8.
- 567 32. Bedford T, Neher R. Seasonal influenza circulation patterns and projections for 2017-  
568 2018. Available at: <https://nextflu.org/reports/feb-2017/>.
- 569 33. Pebody R, Warburton F, Ellis J, et al. Effectiveness of seasonal influenza vaccine in  
570 preventing laboratory-confirmed influenza in primary care in the United Kingdom:  
571 2015/16 mid-season results. *Euro Surveill* **2016**; 21.
- 572 34. Korsun N, Angelova S, Gregory V, Daniels R, Georgieva I, McCauley J. Antigenic and  
573 genetic characterization of influenza viruses circulating in Bulgaria during the 2015/2016  
574 season. *Infect Genet Evol* **2017**; 49:241-50.

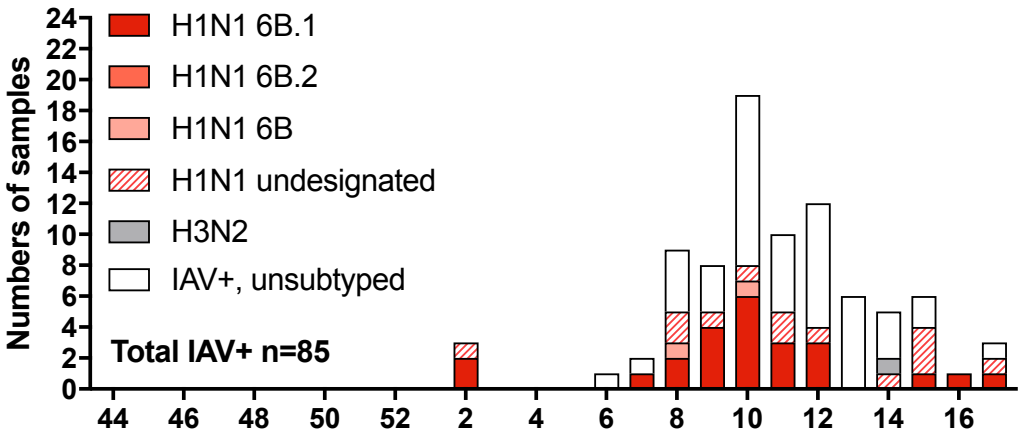
- 575 35. Garretson TA, Petrie JG, Martin ET, Monto AS, Hensley SE. Identification of human  
576 vaccinees that possess antibodies targeting the egg-adapted hemagglutinin receptor  
577 binding site of an H1N1 influenza vaccine strain. *Vaccine* **2018**; 36:4095-101.
- 578 36. Raymond DD, Stewart SM, Lee J, et al. Influenza immunization elicits antibodies specific  
579 for an egg-adapted vaccine strain. *Nat Med* **2016**; 22:1465-9.
- 580 37. Liu F, Tzeng WP, Horner L, et al. Influence of Immune Priming and Egg Adaptation in  
581 the Vaccine on Antibody Responses to Circulating A(H1N1)pdm09 Viruses After Influenza  
582 Vaccination in Adults. *J Infect Dis* **2018**; 218:1571-81.
- 583 38. World\_Health\_Organization. Recommended composition of influenza virus vaccines for  
584 use in the 2017 southern hemisphere influenza season. Available at:  
585 [https://www.who.int/influenza/vaccines/virus/recommendations/2017\\_south/en/](https://www.who.int/influenza/vaccines/virus/recommendations/2017_south/en/).
- 586 39. World\_Health\_Organization. Recommended composition of influenza virus vaccines for  
587 use in the 2017- 2018 northern hemisphere influenza season. Available at:  
588 [https://www.who.int/influenza/vaccines/virus/recommendations/2017\\_18\\_north/en/](https://www.who.int/influenza/vaccines/virus/recommendations/2017_18_north/en/).
- 589 40. Linderman SL, Chambers BS, Zost SJ, et al. Potential antigenic explanation for atypical  
590 H1N1 infections among middle-aged adults during the 2013-2014 influenza season.  
591 *Proceedings of the National Academy of Sciences of the United States of America* **2014**;  
592 111:15798-803.
- 593 41. Flannery B, Smith C, Garten RJ, et al. Influence of Birth Cohort on Effectiveness of 2015-  
594 2016 Influenza Vaccine Against Medically Attended Illness Due to 2009 Pandemic Influenza  
595 A(H1N1) Virus in the United States. *J Infect Dis* **2018**; 218:189-96.
- 596 42. Skowronski DM, Chambers C, Sabaiduc S, et al. Beyond Antigenic Match: Possible Agent-  
597 Host and Immuno-epidemiological Influences on Influenza Vaccine Effectiveness During  
598 the 2015-2016 Season in Canada. *J Infect Dis* **2017**; 216:1487-500.
- 599 43. Skowronski DM, Chambers C, Sabaiduc S, et al. A Perfect Storm: Impact of Genomic  
600 Variation and Serial Vaccination on Low Influenza Vaccine Effectiveness During the 2014-  
601 2015 Season. *Clin Infect Dis* **2016**; 63:21-32.
- 602 44. Sheridan PA, Paich HA, Handy J, et al. Obesity is associated with impaired immune  
603 response to influenza vaccination in humans. *Int J Obes (Lond)* **2012**; 36:1072-7.
- 604 45. Klein SL, Pekosz A. Sex-based biology and the rational design of influenza vaccination  
605 strategies. *J Infect Dis* **2014**; 209 Suppl 3:S114-9.
- 606 46. Krause JC, Tumpey TM, Huffman CJ, et al. Naturally occurring human monoclonal  
607 antibodies neutralize both 1918 and 2009 pandemic influenza A (H1N1) viruses. *Journal of*  
608 *virology* **2010**; 84:3127-30.
- 609



# Figure 1

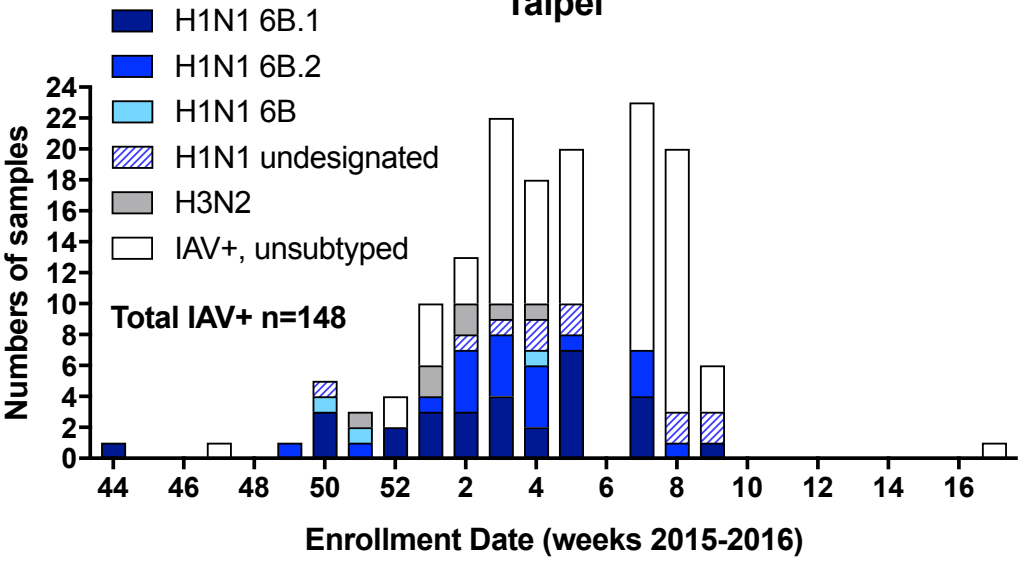
**A**

## Baltimore



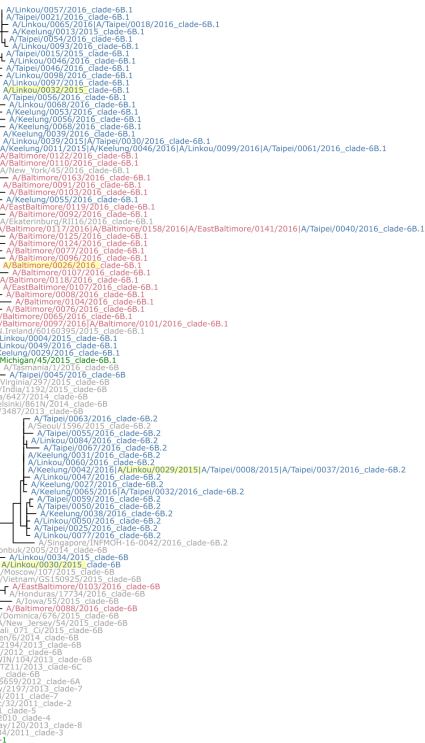
**B**

## Taipei



# Figure 2

## A



Vaccine strains

References

Collection sites:

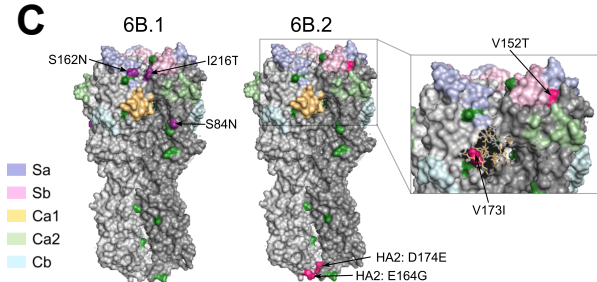
Baltimore

Taipei

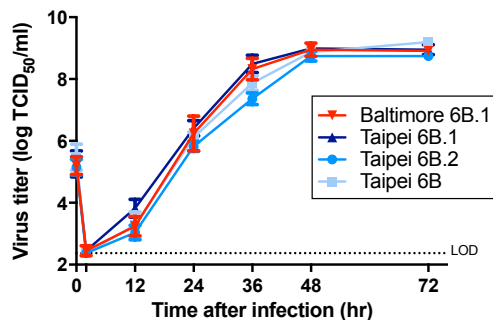
## B

Clade	Baltimore (n=26)	Taipei (n=53)
6B.1	24 (92.3%)	30 (56.6%)
6B.2	0 (0%)	20 (37.7%)
6B	2 (7.7%)	3 (5.7%)

## C



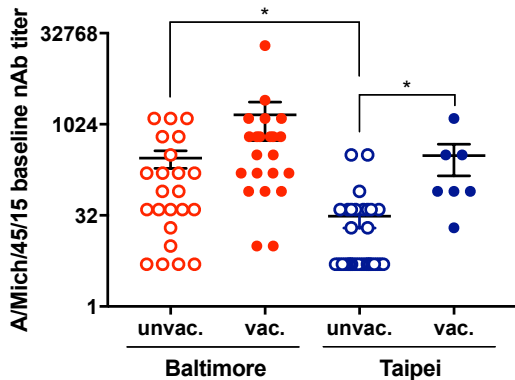
## D



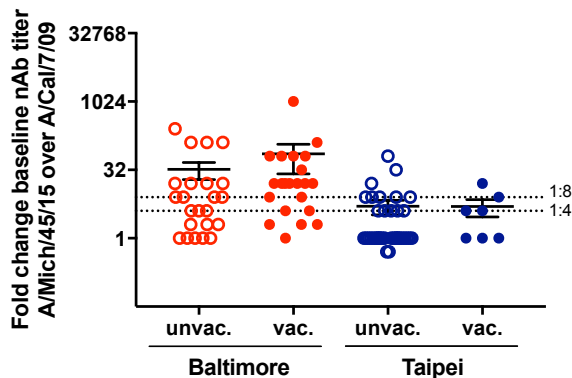


# Figure 4

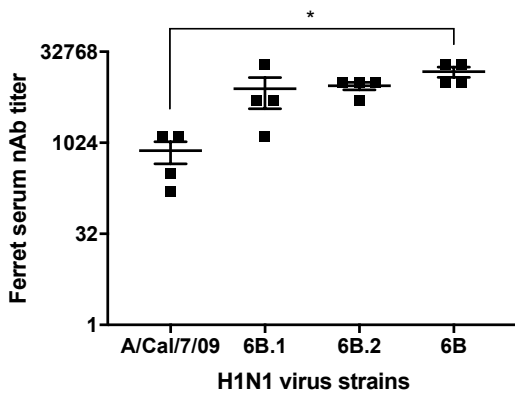
## A



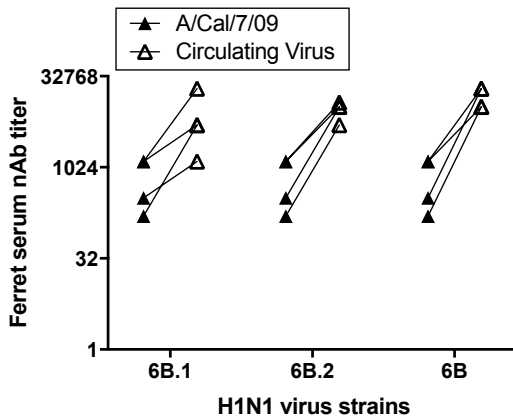
## B



## C



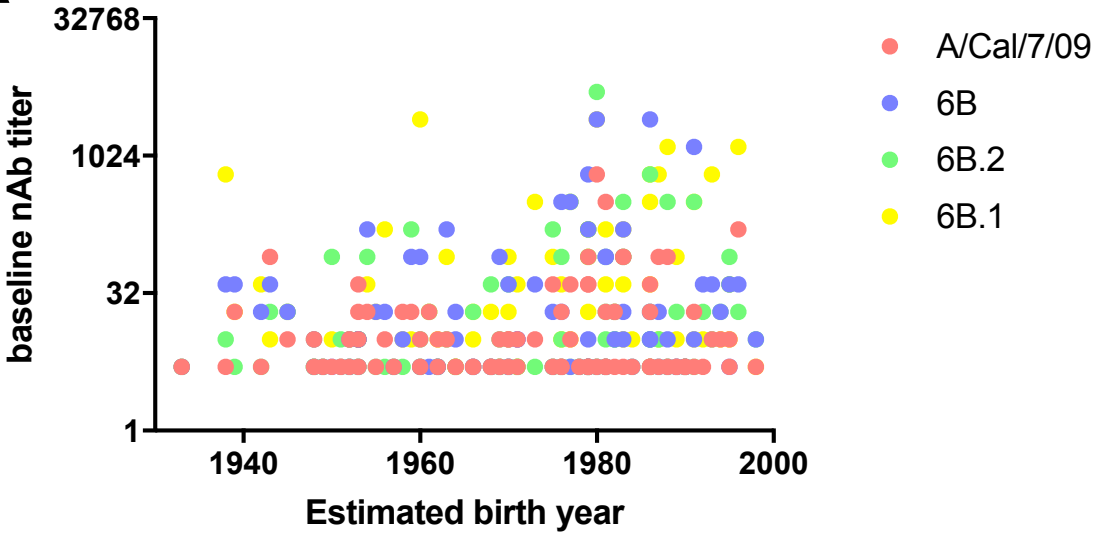
## D



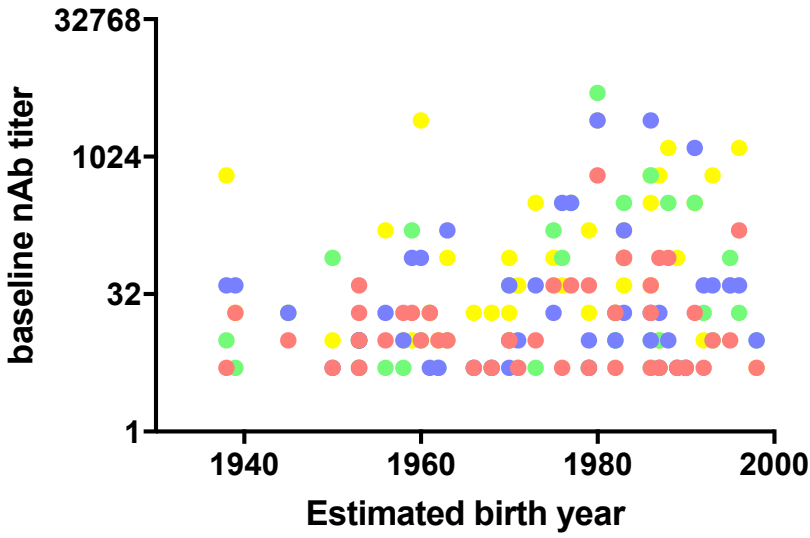
# Supplementary Figure 1

bioRxiv preprint doi: <https://doi.org/10.1101/2020.10.05.20203042>; this version posted October 6, 2020. The copyright holder for this preprint (which was not certified by peer review) is the author/funder, who has granted medRxiv a license to display the preprint in perpetuity. It is made available under a [CC-BY-NC-ND 4.0 International license](https://creativecommons.org/licenses/by-nc-nd/4.0/).

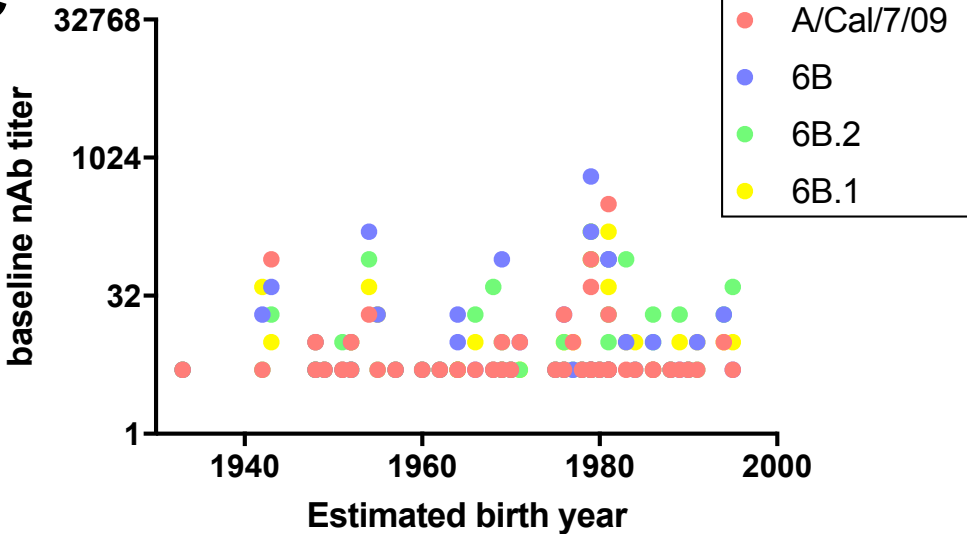
## A Baltimore & Taipei



## B Baltimore

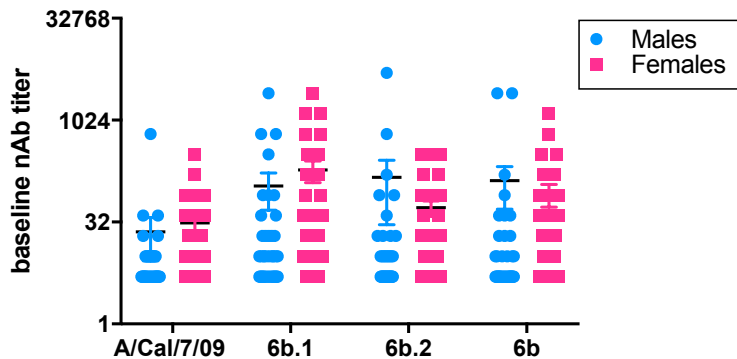


## C Taipei

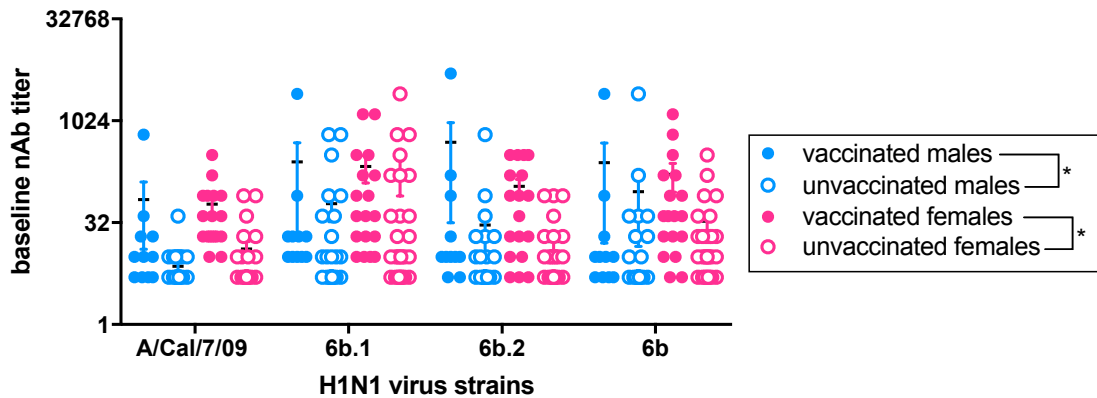


# Supplementary Figure 2

## A



## B



**Table 1. Patient characteristics at the two geographic locations, Baltimore and Taipei.**

	Baltimore			Taipei		
	ILI+, IAV+	ILI+, IAV-	p-value	ILI+, IAV+	ILI+, IAV-	p-value
<b>Age</b>						
18-49	70.6% (60/85)	64.7% (108/167)	0.3973	62.2% (92/148)	68.0% (66/97)	0.501
50-64	23.5% (20/85)	26.9% (45/167)	0.6483	25.0% (37/148)	24.7% (24/97)	1
65+	5.9% (5/85)	8.4% (14/167)	0.6166	12.8% (19/148)	7.2% (7/97)	0.2048
<b>Race</b>						
White	23.5% (20/85)	40.1% (67/167)	0.0114	0% (0/148)	0% (0/97)	1
Black or African American	67.1% (57/85)	54.5% (91/167)	0.0594	0% (0/148)	0% (0/97)	1
Asian	0% (0/85)	1% (1/167)	1	100% (148/148)	100% (97/97)	1
Other	9.4% (8/85)	4.8% (8/167)	0.1765	0% (0/148)	0% (0/97)	1
<b>Gender</b>						
Female	52.9% (45/85)	57.5% (96/167)	0.5051	65.5% (97/148)	52.6% (51/97)	0.0461
Male	47.1% (40/85)	42.5% (71/167)		34.5% (51/148)	47.4% (46/97)	
<b>Vaccination</b>						
Vaccinated	29.8% (25/84)	50.3% (82/163)	0.0028	6.1% (9/148)	12.4% (12/97)	0.1037
<b>Co-morbidities</b>						
None	35.3% (30/85)	19.8% (33/167)	0.0089	54.7% (81/148)	47.4% (46/97)	0.2392
One	29.4% (25/85)	29.9% (50/167)	1	20% (29/148)	29% (28/97)	
Multiple	35.3% (30/85)	50.3% (84/167)	0.0319	25.7% (38/148)	23.7% (23/97)	
<b>Pregnancy</b>	6.7% (3/45)	3.2% (3/95)	0.3861	5.2% (5/97)	5.9% (3/51)	1
<b>Disease severity</b>						
Oxygen supplementation	17.6% (15/85)	28.7% (48/167)	0.0648	23.0% (34/148)	17.5% (17/97)	0.3374
Intubation	0% (0/84)	0% (0/167)	1	1% (1/148)	3% (3/97)	0.3033
Inpatient	29.4% (25/85)	44.3% (74/167)	0.0288	31% (46/148)	44% (43/97)	0.0584
Length of stay	3 (1-12)	2 (1-21)	0.8824	5 (1-55)	6 (1-59)	0.8476
ICU	8.0% (2/25)	0% (0/74)	0.0618	4.3% (2/46)	7.0% (3/43)	0.6729
Pneumonia	18% (15/85)	28% (46/167)	0.1528	41% (60/148)	40% (39/97)	1
Death	0% (0/85)	0% (0/167)	1	4% (6/148)	0% (0/97)	0.0839

**Table 2. Clinical and demographic characteristics of H1N1 IAV-infected patients at Baltimore and Taipei**

	H1N1		p value
	Baltimore	Taipei	
<b>Age</b>			
18-49	79.5% (31/39)	75.0% (48/64)	0.64
50-64	17.9% (7/39)	20.3% (13/64)	1
65+	2.6% (1/39)	4.7% (3/64)	1
<b>Race</b>			
White	10.3% (4/39)	0% (0/64)	0.0186
Black or African American	74.4% (29/39)	0% (0/64)	<0.0001
Asian	0% (0/39)	100% (64/64)	<0.0001
Other	15.4% (6/39)	0% (0/64)	0.0023
<b>Gender</b>			
Female	48.7% (19/39)	65.6% (42/64)	0.1022
Male	51.3% (20/39)	34.4% (22/64)	
<b>Vaccination</b>			
Vaccinated	31.6% (12/38)	4.7% (3/64)	0.0004
<b>Co-morbidities</b>			
None	38.5% (15/39)	60.9% (39/64)	0.0414
One	33.3% (13/39)	22% (14/64)	0.2496
Multiple	28.2% (11/39)	17.2% (11/64)	0.2194
<b>Pregnancy</b>			
	10.5% (2/19)	0% (0/42)	<0.0001
<b>Disease severity</b>			
Oxygen supplementation	12.8% (5/39)	9.4% (6/64)	1
Intubation	0% (0/39)	0% (0/64)	1
Inpatient	23.1% (9/39)	19% (12/64)	0.4286
Length of stay	3 (1-12)	6 (3-9)	0.2256
ICU	11.1% (1/9)	0% (0/12)	0.45
Pneumonia	18% (7/39)	34% (22/64)	0.1149
Death	0% (0/39)	2% (1/64)	1



**Table 3. Allen-Cady multivariate analysis**

<b>Model 1: A/Cal/7/09</b>					
<b>Variable</b>	<b>Coefficient</b>	<b>95% CI</b>		<b>p-Value</b>	<b>Coefficient</b>
Age	-0.03	-0.04	-0.01	0.00	-0.04
Vaccination	2.01	1.48	2.54	0.00	1.82
Education	-0.78	-1.31	-0.26	0.00	-1.06
Male	-0.50	-0.99	-0.02	0.04	
Asian					
Employment					-0.99
BMI					
Steroid usage					-2.03
Vaccination by PSW	2.14	1.12	3.17	0.00	1.63
Vaccination x Asian**	2.08	0.88	3.28	0.00	3.50

\*Education: college or higher, BMI: Body mass index

\*\* Effect modification between antibody titers, vaccination and Asian; adjusted for age and

Model 2: 6B			Model 3: 6B.1			
95% CI		p-Value	Coefficient	95% CI		p-Value
-0.07	-0.01	0.00	-0.03	-0.06	0.00	0.02
0.95	2.70	0.00				
-1.97	-0.15	0.02	-1.03	-1.90	-0.17	0.02
			-1.02	-1.83	-0.22	0.01
			-2.56	-3.36	-1.76	0.00
-1.92	-0.06	0.04				
-3.98	-0.07	0.04				
0.32	2.94	0.01	1.14	-0.19	2.47	0.00
1.71	5.30	0.00	2.70	0.76	4.64	0.01

d education in model 1; age, education, steroid usage and employment in model 2; male, educatio

---

<b>Model 4: 6B.2</b>			
<b>Coefficient</b>	<b>95% CI</b>		<b>p-Value</b>
-0.04	-0.06	-0.02	0.00
2.20	1.44	2.97	0.00
-0.04	-0.09	0.00	0.05
2.63	0.69	4.58	0.01
0.52	-1.15	2.19	0.54

---

n in model 3; and BMI, chills and HIV or AIDS in model

**Supplementary Table 1: Influenza A virus strains and associated GenBank accession numbers**

<b>Strain name</b>	<b>HA clade</b>	<b>GenBank accession no.</b>
A/Baltimore/0008/2016	6B.1	KY487698
A/Baltimore/0026/2016	6B.1	KY950126
A/Baltimore/0065/2016	6B.1	KY950052
A/Baltimore/0076/2016	6B.1	KY487689
A/Baltimore/0077/2016	6B.1	KY950108
A/Baltimore/0088/2016	6B	KY487140
A/Baltimore/0091/2016	6B.1	KY615553
A/Baltimore/0092/2016	6B.1	KY487543
A/Baltimore/0096/2016	6B.1	KY615388
A/Baltimore/0097/2016	6B.1	KY487190
A/Baltimore/0101/2016	6B.1	KY487503
A/Baltimore/0103/2016	6B.1	KY487506
A/Baltimore/0104/2016	6B.1	KY487646
A/Baltimore/0107/2016	6B.1	KY487472
A/Baltimore/0110/2016	6B.1	KY615408
A/Baltimore/0117/2016	6B.1	KY487377
A/Baltimore/0118/2016	6B.1	KY615604
A/Baltimore/0122/2016	6B.1	KY615559
A/Baltimore/0124/2016	6B.1	KY487575
A/Baltimore/0125/2016	6B.1	KY487453
A/Baltimore/0158/2016	6B.1	KY487430
A/Baltimore/0163/2016	6B.1	KY487592
A/EastBaltimore/0103/2016	6B	KY487656
A/EastBaltimore/0107/2016	6B.1	KY487123
A/EastBaltimore/0119/2016	6B.1	KY615447
A/EastBaltimore/0141/2016	6B.1	KY487527
A/Keelung/0011/2015	6B.1	KY487251
A/Keelung/0013/2015	6B.1	KY949643
A/Keelung/0027/2016	6B.2	KY487340
A/Keelung/0029/2016	6B.1	KY487499
A/Keelung/0031/2016	6B.2	KY615480
A/Keelung/0038/2016	6B.2	KY487655
A/Keelung/0039/2016	6B.1	KY949887
A/Keelung/0042/2016	6B.2	KY487695
A/Keelung/0046/2016	6B.1	KY487149
A/Keelung/0053/2016	6B.1	KY487727
A/Keelung/0055/2016	6B.1	KY950148

A/Keelung/0056/2016	6B.1	KY487617
A/Keelung/0065/2016	6B.2	KY487219
A/Keelung/0068/2016	6B.1	KY615443
A/Linkou/0004/2015	6B.1	KY950124
A/Linkou/0029/2015	6B.2	KY950184
A/Linkou/0030/2015	6B	KY949802
A/Linkou/0032/2015	6B.1	KY949823
A/Linkou/0034/2015	6B	KY949991
A/Linkou/0039/2015	6B.1	KY949680
A/Linkou/0046/2016	6B.1	KY949679
A/Linkou/0047/2016	6B.2	KY949975
A/Linkou/0049/2016	6B.1	KY950223
A/Linkou/0050/2016	6B.2	KY949736
A/Linkou/0057/2016	6B.1	KY615390
A/Linkou/0060/2016	6B.2	KY615424
A/Linkou/0065/2016	6B.1	KY487702
A/Linkou/0068/2016	6B.1	KY615570
A/Linkou/0077/2016	6B.2	KY487687
A/Linkou/0084/2016	6B.2	KY487767
A/Linkou/0093/2016	6B.1	KY487613
A/Linkou/0097/2016	6B.1	KY615425
A/Linkou/0098/2016	6B.1	KY615441
A/Linkou/0099/2016	6B.1	KY487353
A/Taipei/0008/2015	6B.2	KY487478
A/Taipei/0015/2015	6B.1	KY487273
A/Taipei/0018/2016	6B.1	KY487725
A/Taipei/0021/2015	6B.1	KY487147
A/Taipei/0025/2016	6B.2	KY487209
A/Taipei/0030/2016	6B.1	KY487336
A/Taipei/0032/2016	6B.2	KY487330
A/Taipei/0037/2016	6B.2	KY487649
A/Taipei/0040/2016	6B.1	KY487744
A/Taipei/0045/2016	6B	KY487602
A/Taipei/0046/2016	6B.1	KY487436
A/Taipei/0050/2016	6B.2	KY487591
A/Taipei/0054/2016	6B.1	KY487403
A/Taipei/0055/2016	6B.2	KY487233
A/Taipei/0056/2016	6B.1	KY615515
A/Taipei/0059/2016	6B.2	KY615586
A/Taipei/0061/2016	6B.1	KY487248
A/Taipei/0063/2016	6B.2	KY487365

A/Taipei/0067/2016

6B.2

KY487709

**Supplementary Table 2. Clinical and demographic characteristics of H1N1 IAV-infected patients at Baltimore and Taipei based on HA clade**

	Baltimore 6B.1	Taipei 6B.1	Taipei 6B.2	p-value Baltimore 6B.1 v. Taipei 6B.1	p-value Taipei 6B.1 v. Taipei 6B.2
<b>Age</b>					
18-49	83.3% (20/24)	80.0% (24/30)	65.0% (13/20)	1	0.3266
50-64	12.5% (3/24)	13.3% (4/30)	35.0% (7/20)	0.1572	0.5062
65+	4.2% (1/24)	6.7% (2/30)	0% (0/20)	1	0.5102
<b>Race</b>					
White	4.2% (1/24)	0% (0/30)	0% (0/20)	0.4444	1
Black or African American	75.0% (18/24)	0% (0/30)	0% (0/20)	<0.0001	1
Asian	0% (0/24)	100% (30/30)	100% (20/20)	<0.0001	1
Other	20.8% (5/24)	0% (0/30)	0% (0/20)	0.0134	1
<b>Gender</b>					
Female	54.2% (13/24)	66.7% (20/30)	75.0% (15/20)	0.4075	0.7536
Male	45.8% (11/24)	33% (10/30)	25.0% (5/20)		
<b>Vaccination</b>					
Vaccinated	26.1% (6/23)	6.7% (2/30)	5.0% (1/20)	0.065	1
<b>Co-morbidities</b>					
None	41.7% (10/24)	66.7% (20/30)	45.0% (9/20)	0.0987	0.1535
One	25.0% (6/24)	17% (5/30)	40% (8/20)	0.5104	0.1004
Multiple	33.3% (8/24)	16.7% (5/30)	15.0% (3/20)	0.2056	1
<b>Pregnancy</b>					
	7.7% (1/13)	0% (0/20)	0% (0/15)	<0.0001	1
<b>Disease severity</b>					
Oxygen supplementation	8.3% (2/24)	0% (0/30)	15.0% (3/20)	0.1929	0.05
Intubation	0% (0/24)	0% (0/30)	0% (0/20)	1	1
Inpatient	16.7% (4/24)	13% (4/30)	20% (4/20)	1	0.6974
Length of stay	3 (1-12)	6 (3-9)	7 (4-9)	0.7143	0.8571
ICU	0% (0/4)	0% (0/4)	0% (0/4)	1	1
Pneumonia	8% (2/24)	20% (6/30)	35% (7/20)	0.2771	0.3266
Death	0% (0/24)	0% (0/30)	0% (0/20)	1	1