

1 **How geographic access to care shapes disease burden: the current**  
2 **impact of post-exposure prophylaxis and potential for expanded**  
3 **access to prevent human rabies deaths in Madagascar**

4 Malavika Rajeev<sup>1,✉</sup>, H  l  ne Guis<sup>2,3,4,5</sup>, Glenn Edosoa<sup>7</sup>, Chantal Hanitriniaina<sup>8</sup>, Anjasoa  
5 Randrianarijaona<sup>2</sup>, Reziky Tiandraza Mangahasimbola<sup>2</sup>, Fleur Hierink<sup>9</sup>, Ravo  
6 Ramiandrasoa<sup>10</sup>, Jos   Nely<sup>6</sup>, Jean-Michel Heraud<sup>11</sup>, Soa Fy Andriamandimby<sup>11</sup>,  
7 Laurence Baril<sup>\*,12</sup>, C.J.E. Metcalf<sup>\*,1</sup>, and Katie Hampson<sup>\*,13</sup>

8 \* Joint senior authors.

9 <sup>1</sup> Department of Ecology and Evolutionary Biology, Princeton University, Princeton,  
10 United States

11 <sup>2</sup> Epidemiology and Clinical Research Unit, Institut Pasteur de Madagascar,  
12 Antananarivo, Madagascar

13 <sup>3</sup> CIRAD, UMR ASTRE, Antananarivo, Madagascar

14 <sup>4</sup> ASTRE, Univ Montpellier, CIRAD, INRAE, Montpellier, France

15 <sup>5</sup> FOFIFA-DRZVP, Antananarivo, Madagascar<sup>6</sup> World Health Organization,  
16 Madagascar

17 <sup>6</sup> Service contre les Maladies End  mo-  pid  miques et Tropicales N  glig  es, Minist  re  
18 de la Sant   Publique, Antananarivo, Madagascar

19 <sup>7</sup> Charg   des Maladies Tropicales N  glig  es, Organisation mondiale de la Sant    
20 Madagascar, Antananarivo, Madagascar

21 <sup>8</sup> Mention Zoologie et Biodiversit   Animale, Facult   des Sciences, Universit  

22 d'Antananarivo, Antananarivo, Madagascar

23 <sup>9</sup> Institute of Global Health, Faculty of Medicine, University of Geneva, Geneva,

24 Switzerland

25 <sup>10</sup> Vaccination Center, Institut Pasteur de Madagascar, Antananarivo, Madagascar

26 <sup>11</sup> Virology Unit, Institut Pasteur de Madagascar, Antananarivo, Madagascar

27 <sup>12</sup> Institut Pasteur du Cambodge (previously Epidemiology and Clinical Research Unit at

28 Institut Pasteur de Madagascar)

29 <sup>13</sup> Boyd Orr Centre for Population and Ecosystem Health, Institute of Biodiversity,

30 Animal Health and Comparative Medicine, University of Glasgow, Glasgow, UK

31 ✉ Correspondence: [Malavika Rajeev <mrajeev@princeton.edu>](mailto:Malavika Rajeev <mrajeev@princeton.edu>)

32

## 33 **Abstract**

### 34 **Background**

35 Post-exposure prophylaxis (PEP) is highly effective at preventing human rabies deaths,  
36 however access to PEP is limited in many rabies endemic countries. The 2018 decision  
37 by Gavi to add human rabies vaccine to its investment portfolio should expand PEP  
38 availability and reduce rabies deaths. We explore how geographic access to PEP  
39 impacts the rabies burden in Madagascar and the potential benefits of improved  
40 provisioning.

### 41 **Methodology & Principal Findings**

42 We use travel times to the closest clinic providing PEP (N=31) as a proxy for access.  
43 We find that travel times strongly predict reported bite incidence across the country.  
44 Using resulting estimates in an adapted decision tree framework we extrapolate rabies  
45 deaths and reporting and find that geographic access to PEP shapes burden sub-  
46 nationally. We estimate 960 human rabies deaths annually (95% Prediction Intervals  
47 (PI):790 - 1120), with PEP averting an additional 800 deaths (95% PI: 800 (95% PI: 640  
48 - 970) each year. Under these assumptions, we find that expanding PEP to one clinic  
49 per district could reduce deaths by 19%, but even with all major health centers  
50 provisioning PEP (1733 additional clinics), we still expect substantial rabies mortality.  
51 Our quantitative estimates are most sensitive to assumptions of underlying rabies  
52 exposure incidence, but qualitative patterns of the impacts of travel times and expanded  
53 PEP access are robust.

## 54 **Conclusions & Significance**

55 PEP is effective at preventing rabies deaths, and in the absence of strong surveillance,  
56 targeting underserved populations may be the most equitable way to provision PEP.  
57 Our framework could be used to guide PEP expansion and improve targeting of  
58 interventions in similar endemic settings where PEP access is geographically restricted.  
59 While better PEP access should save many lives, improved outreach and surveillance is  
60 needed and if rolled out with Gavi investment could catalyze progress towards  
61 achieving zero rabies deaths.

## 62 **Author Summary**

63 Canine rabies causes an estimated 60,000 deaths each year across the world, primarily  
64 in low- and middle-income countries where people have limited access to both human  
65 vaccines (post-exposure prophylaxis or PEP) and dog rabies vaccines. Given that we  
66 have the tools to prevent rabies deaths, a global target has been set to eliminate deaths  
67 due to canine rabies by 2030, and recently, Gavi, a multilateral organization that aims to  
68 improve access to vaccines in the poorest countries, added human rabies vaccine to its  
69 portfolio. In this study, we estimated reported bite incidence in relation to travel times to  
70 clinics provisioning PEP, and extrapolate human rabies deaths in Madagascar. We find  
71 that PEP currently averts around 800 deaths each year, but that the burden remains  
72 high (1000 deaths/ year), particularly in remote, hard-to-reach areas. We show that  
73 expanding PEP availability to more clinics could significantly reduce rabies deaths in  
74 Madagascar, but our results suggest that expansion alone will not eliminate deaths.  
75 Combining PEP expansion with outreach, surveillance, and mass dog vaccination

76 programs will be necessary to move Madagascar, and other Low- and Middle-Income  
77 countries, forward on the path to rabies elimination.

78

## 79 **Introduction**

80 Inequities in access to care are a major driver of disease burden globally [1]. Often, the  
81 populations at greatest risk of a given disease are the most underserved [2]. Delivering  
82 interventions to these groups is challenging due to financial and infrastructural  
83 limitations, and requires careful consideration of how best to allocate limited resources  
84 [3].

85 Canine rabies is estimated to cause approximately 60,000 human deaths annually [4].  
86 Mass vaccination of domestic dogs has been demonstrated to be a highly effective way  
87 to control the disease in both animals and humans. While dog vaccination can interrupt  
88 transmission in the reservoir, human deaths can also be prevented through prompt  
89 administration of post-exposure prophylactic vaccines (PEP) following a bite by a rabid  
90 animal [5]. However, access to human vaccine is limited in many countries where  
91 canine rabies is endemic [6–8], and within countries these deaths are often  
92 concentrated in rural, underserved communities [9].

93 In 2015, a global framework to eliminate deaths due to canine rabies by 2030 ('Zero by  
94 30') through a combination of PEP provisioning and dog vaccination was established by  
95 the World Health Organization (WHO) and partners [10]. Furthermore, in 2018, Gavi,  
96 the Vaccine Alliance, added human rabies vaccines to their proposed investment  
97 portfolio [11]. From 2021, Gavi-eligible countries should be able to apply for support to  
98 expand access to these vaccines, with potential to greatly reduce deaths due to rabies.

99 A primary challenge in expanding access effectively is the lack of data on rabies  
100 exposures and deaths in humans and incidence in animals in most rabies-endemic

101 countries [12]. Deaths due to rabies are often severely underreported, with many people  
102 dying outside of the health system, often in remote and marginalized communities [13].  
103 Instead of directly measuring rabies deaths, the majority of rabies burden studies use  
104 bite patient data on reported bites at clinics provisioning PEP and a decision tree  
105 framework to extrapolate deaths, assuming that overall reported bite incidence (i.e. both  
106 bites due to non-rabid and rabid animals) is proportional to rabies incidence (i.e. the  
107 more bites reported in a location, the higher the incidence of rabies exposures), and that  
108 reporting to clinics for PEP is uniform across space [8,14,15]. If applied subnationally,  
109 these assumptions would likely underestimate rabies deaths in places with poor access  
110 to PEP and may overestimate rabies deaths in places with better access to PEP.

111 In Madagascar, the Institut Pasteur de Madagascar (IPM) provides PEP to 30 Ministry  
112 of Health clinics, in addition to it's own vaccine clinic, where PEP is available at no  
113 direct cost to patients [15]. Other than at these 31 anti-rabies medical centers (ARMC),  
114 PEP is not available at any other public clinics or through the private sector. In addition,  
115 there is limited control of rabies in dog populations and the disease is endemic  
116 throughout the country [16,17]. Due to the spatially restricted nature of PEP provisioning  
117 and lack of direct costs for PEP, geographic access is likely to be a major driver of  
118 disease burden within the country. Previously, we estimated the burden of rabies in  
119 Madagascar nationally using data from a single district to extrapolate to the country, and  
120 did not account for spatial variation in access [15]. Here, we provide revised estimates  
121 of human rabies deaths by incorporating the impact of access to PEP at the sub-  
122 national level on preventing human rabies deaths and explore the potential impact of  
123 expanding provisioning of human rabies vaccines on further reducing these deaths. This

124 framework may usefully apply to other countries where PEP availability is currently  
125 geographically restricted in considering how to most effectively and equitably provision  
126 these life-saving vaccines.

## 127 **Methods**

### 128 **Estimating geographic access to ARMC**

129 To estimate mean and population weighted travel times to the nearest clinic at the scale  
130 of administrative units, we used two rasters: 1) the friction surface from the Malaria  
131 Atlas Project [18] at an  $\sim 1 \text{ km}^2$  scale (Fig S1.1A) and 2) the population estimates from  
132 the the 2015 UN adjusted population projections from World Pop ([19], originally at an  
133  $\sim 100\text{m}^2$  resolution, Fig S1.1B), which we aggregated to the friction surface.

134 From GPS locations of the 31 ARMCs we estimated the travel time to the nearest clinic  
135 at an approximately  $1 \times 1 \text{ km}$  scale as described in [18]. We then extracted the mean  
136 and population-weighted mean travel times for the district and commune (the  
137 administrative unit below the district), and euclidean distance, i.e. the minimum distance  
138 from the administrative unit centroid to any ARMC. We used shapefiles from the UN  
139 Office for the Coordination of Humanitarian Affairs for the administrative boundaries (as  
140 of October 31, 2018). We compared travel times and distance estimates to driving times  
141 collected by IPM during field missions and patient reported travel times from a subset of  
142 Moramanga ARMC patients (see Fig S1.2 for raw data).

### 143 **Estimating bite incidence**

144 We used two datasets on bite patients reporting to ARMC:



- 145 • A national database of individual bite patient forms submitted to IPM from ARMC  
146 across the country between 2014 - 2017. These forms were submitted with  
147 frequencies ranging from monthly to annually, included the patient reporting date  
148 and were resolved to the district level (patient residence).
- 149 • 33 months of data (between October 2016 and June 2019) on patients reporting to  
150 the Moramanga District ARMC resolved to commune level.
- 151 For the national data, some clinics did not submit any data, or had substantial periods  
152 (months to a whole year), with no submitted data. To correct for this, we exclude  
153 periods of 15 consecutive days with zero submitted records (see Supplementary  
154 Appendix, section S2). For each clinic we divided the total number of bites reported in a  
155 given year by the estimated proportion of forms which were not submitted (under-  
156 submission). Due to yearly variation in submissions, we took the average of annual bite  
157 incidence estimates aggregated to district level. We validated this approach by  
158 comparing estimated vial demand given the total reported bites corrected for under-  
159 submission to vials provisioned to clinics for 2014-2017 (see Supplementary Appendix,  
160 section S2). At both the commune and district level, we assigned clinic catchments by  
161 determining which were closest in terms of travel times for the majority of the population  
162 within the administrative unit. For national data, we excluded any districts in a  
163 catchment of a clinic which submitted less than 10 forms and any years for which we  
164 estimated less than 25% of forms were submitted.

### 165 **Modeling reported bite incidence**

166 We modeled the number of reported bites as a function of travel time ( $T$ ) using a  
167 Poisson regression:

168 
$$\mu_i = e^{(\beta_t T_i + \beta_0)} P_i$$

169 
$$y_i = \text{Poisson}(\mu_i)$$

170 where  $y_i$  is the average number of bites reported to a clinic annually and  $\mu_i$  the  
171 expected number of bite patients presenting at the ARMC as a function of travel time  
172 ( $T_i$ ) and human population size ( $P_i$ ) (an offset which scales the incidence to the  
173 expected number of bites) for a given source location (district or commune). We fit this  
174 model to both the national data (district level) and the Moramanga data (commune  
175 level). To more directly compare estimates between datasets, we also modeled the  
176 national data with a latent commune-level travel time covariate ( $T_j$ ):

177 
$$\mu_i = \sum_{j=1}^j e^{(\beta_t T_j + \beta_0)} P_j$$

178 As travel times are correlated with population size (Fig S3.1), we also compared how  
179 well bites were predicted by population size alone, and in combination with travel times.  
180 For the models with population size, we removed the offset and used either population  
181 size alone ( $\mu_i = e^{(\beta_p P_i + \beta_0)}$ ) or population size and travel times ( $\mu_i = e^{(\beta_t T_i + \beta_p P_i + \beta_0)}$ ) as  
182 predictors.

183 For the models fit to the national data, we also modeled variation between clinics with a  
184 catchment random effect:  $B_{0,k} \sim \text{norm}(\mu, \sigma_0)$ , where  $\mu$  is the mean and  $\sigma_0$  is standard  
185 deviation and  $B_{0,k}$  is the catchment level intercept.

186 We tested whether the catchment random effect captured overdispersion in the data  
187 (i.e. variance > mean – the expectation given a Poisson distribution) rather than any

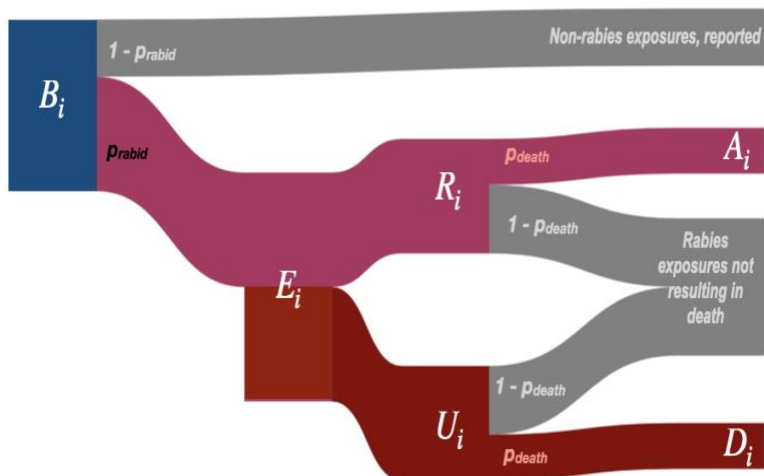
188 catchment specific effects by extending these models with an overdispersion parameter,  
189  $\sigma_e$  [20]:

190 
$$\mu_i = e^{(\sum_{j=1}^j \beta_j X_j + \sigma_e)} P_i$$

191 where  $\sum_{j=1}^j \beta_j X_j$  is the sum of the all parameters for a given model. We fit all models in  
192 a Bayesian regression framework via MCMC using the R package ‘rjags’ [21]. We used  
193 model estimates to generate fitted and out-of-fit predictions, and examined the  
194 sensitivity of estimates to adjustments for under-submission of forms (Supplementary  
195 Appendix, section S3).

## 196 **Modeling human rabies deaths**

197 We estimate rabies deaths as a function of the number of bites predicted by our model  
198 and estimates of endemic rabies exposure incidence using an adapted decision tree  
199 framework (Fig 1). To model uncertainty in parameter estimates we used triangular  
200 distributions, as with previous studies [8,22], for two key parameters:  $E_i$ , the annual  
201 exposure incidence per administrative unit, and  $p_{rabid}$ , the proportion of reported bites  
202 that are rabies exposures.



203

204 **Fig 1. Decision tree for burden estimation.**

205 For a given administrative unit  $i$ , human deaths due to rabies ( $D_i$ ) are calculated from  
206 model predicted reported bites ( $B_i$ ). To get  $R_i$ , the number of reported bites that were  
207 rabies exposures, we multiply  $B_i$  by  $p_{rabid}$ , the proportion of reported bites that are  
208 rabies exposures.  $p_{rabid}$  is constrained such that reported rabies exposures cannot  
209 exceed total rabies exposures ( $E_i$ ) and reporting of patients to clinics cannot exceed a  
210 maximum ( $p_{max}$ ).  $R_i$  is subtracted from  $E_i$  to get the number of unreported bites ( $U_i$ ) and  
211 then multiplied by the probability of death given a rabies exposure ( $p_{death}$ ) to get deaths  
212 due to rabies ( $D_i$ ). Similarly, deaths averted by PEP,  $A_i$ , are estimated by multiplying  $R_i$   
213 by  $p_{death}$ , i.e. those who would have died given exposure, but instead received PEP.  
214 Both  $E_i$  and  $p_{rabid}$  are drawn from a triangular distribution. Parameter values and  
215 sources are in Table 1.

216 For  $E_i$ , we center the distribution at the lower end of our estimated exposure incidence  
217 from the Moramanga District (42 exposures/100,000 persons), with a range applied  
218 assuming 1% rabies incidence in dogs (estimated across a range of human-to-dog

219 ratios between 5 - 25) and that on average a rabid dog exposes 0.39 persons [4] (see  
220 Fig S4.1). As there is little data on dog population size and human exposure incidence  
221 in Madagascar[16,23], the range we used encompasses both observed human-to-dog  
222 ratios across Africa [14,24] and recent subnational estimates from Madagascar [25],  
223 and generates similar exposure incidences as observed previously across Africa  
224 [26,27].

225 For  $p_{rabid}$ , we use a range between 0.2 - 0.6 estimated from a study of bite patients in  
226 the Moramanga District [15]. So that rabid reported bites cannot exceed the total  
227 expected number of rabies exposures or a maximum reporting (even with minimal travel  
228 times, people may not report for PEP for other reasons), we constrain  $p_{rabid}$ :

$$229 \quad p_{rabid} = \begin{cases} x, & \text{if } \frac{E_i \rho_{max}}{B_i} > x \\ \frac{E_i \rho_{max}}{B_i}, & \text{otherwise} \end{cases}$$

230 where  $\rho_{max}$  is the maximum reporting, estimated from the Moramanga ARMC data for  
231 the commune of Moramanga Ville, the closest commune to the ARMC (average of 3.12  
232 minutes travel time to the clinic), and where we find that approximately 2% of rabies  
233 exposures go unreported [15].

234 We assume that all rabies exposed patients who report to an ARMC receive and  
235 complete PEP, and PEP is completely effective at preventing rabies. Fig 1 describes the  
236 decision tree, the key inputs, and outputs ( $A_i$ , deaths averted by PEP, and  $D_i$ , deaths  
237 due to rabies). Table 1 list all inputs and their sources.

238 **Table 1. Parameters used in the decision tree to estimate human rabies deaths at**  
 239 **the administrative level.**  
 240

Parameter	Value	Description	Source
$B_i$	Function of travel time to closest ARMC	Modeled estimates of reported bite incidence	Bayesian regression model (see Methods)
$E_i$	Triangular(a = 15, b = 76, c = 42)	Annual exposures per 100,000 persons	[4,15], see Fig S4.1
$p_{rabid}$	Triangular(a = 0.2, b = 0.6, c = 0.4)	Proportion of reported bites that are rabies exposures	[15]
$\rho_{max}$	0.98	The maximum reporting possible for any location; data from Moramanga Ville, Moramanga District	[15]
$p_{death}$	0.16	The probability of death given a rabies exposure	[28]

241 **Estimating the impact of expanding PEP provisioning**

242 We developed a framework to rank clinics by how much their PEP provision improves  
 243 access for underserved communities, estimating incremental reductions in burden and  
 244 increases in vaccine demand. Specifically, we aggregated our model-predicted  
 245 estimates of annual bites to the clinic level. As multiple clinics may serve a single district

246 or commune, we allocated bites to clinics according to the proportion of the population  
247 in each administrative unit which were closest. For each clinic, we simulate throughput  
248 by randomly assigning patient presentation dates, and then assume perfect compliance  
249 (i.e. patients report for all doses) to generate subsequent vaccination dates. We use  
250 these dates to estimate vial usage given routine vial sharing practices in Madagascar  
251 [15], but assuming adoption of the WHO-recommended abridged intradermal regimen  
252 (2 x 0.1 ml injections on days 0, 3, and 7 [29]). For both burden and vial estimates, we  
253 take the mean of 1000 simulations as each clinic is added.

254 We simulate expansion first to each district (N = 114) and then to each commune in the  
255 country for all communes with a clinic. We select the CSB II (Centre de Sante Niveau II,  
256 major health centers with immunization capacity) in the highest density grid cell of the  
257 administrative unit as candidates for expansion. For the 85 communes without a CSB II,  
258 we chose the CSB I (secondary health posts) in the highest density grid cell. 94  
259 communes lacked any CSB I or II. Finally, we explore a scenario where all additional  
260 CSB II (totalling 1733) provision PEP.

261 We tested three metrics for ranking additional clinics: 1) The proportion of people living  
262 >3 hours from an existing ARMC for which travel times were reduced; 2) This proportion  
263 (1), weighted by the magnitude of the change in travel times and 3) The mean reduction  
264 in travel times for people living >3 hours from an existing ARMC. We simulated  
265 expansion of ARMC to each district using these three metrics, and chose the metric  
266 which decreased burden the most compared to simulations (N = 10) where clinics were  
267 added randomly to districts for the full expansion of PEP. For the full simulation of  
268 expanded access, once clinics reduced travel times for less than 0.01% of the

269 population (< 2400 living greater than  $x$  hrs away, starting with  $x = 3$  hrs), we reduced  
270 the travel time threshold by 25%.

## 271 **Sensitivity analysis**

272 To test the effect of our model assumptions on estimates of rabies burden and vial  
273 demand, we did a univariate sensitivity analysis of both parameters from the models of  
274 bite incidence and the decision tree (see Table S6.1 & S6.2 for parameter ranges used).  
275 We also examined how systematic variation in rabies incidence with human population  
276 size affected burden estimates. Specifically, if human-to-dog ratios are positively  
277 correlated with human populations (i.e. dog ownership/populations are higher in more  
278 populated, urban areas), we might expect higher rabies exposure incidence as  
279 population size increases. Alternatively, if human-to-dog ratios inversely correlate with  
280 population size (i.e. dog ownership is more common in less populated, rural areas), we  
281 might expect exposure incidence to scale negatively with population size. We use  
282 scaling factors to scale incidence either positively or negatively with observed  
283 population sizes at the district and commune levels, while constraining them to the  
284 range of exposure incidence used in the main analyses (15.6 - 76 exposures per  
285 100,000 persons, Fig S4.2) and simulated baseline burden, as well as expanded PEP  
286 access.

## 287 **Data and analyses**

288 All analyses were done in R version 4.0.2 (2020-06-22) [30] and using the packages  
289 listed in the supplementary references (Supplementary appendix, section S7). All  
290 processed data, code, and outputs are archived on Zenodo



291 (<http://doi.org/10.5281/zenodo.4064312> and <https://doi.org/10.5281/zenodo.4064304>),  
292 and maintained at <https://github.com/mrajeev08/MadaAccess>. The raw bite patient data  
293 at the national level are maintained in two secure REDCap (project-redcap.org)  
294 databases, one for IPM and another for all peripheral ARMC. These databases were  
295 last queried on September 19, 2019 for these analyses. The IPM GIS unit provided the  
296 data on geolocated clinics across the country. Anonymized raw bite patient data and full  
297 data on geolocated clinics are available from IPM following insitutional data transfer  
298 protocols. Anonymized raw data collected from the Moramanga District were retrieved  
299 from the Wise Monkey Portal ([wisemonkeyfoundation.org](http://wisemonkeyfoundation.org)) on the same date and are  
300 shared in the archived repository.

### 301 **Ethics statement**

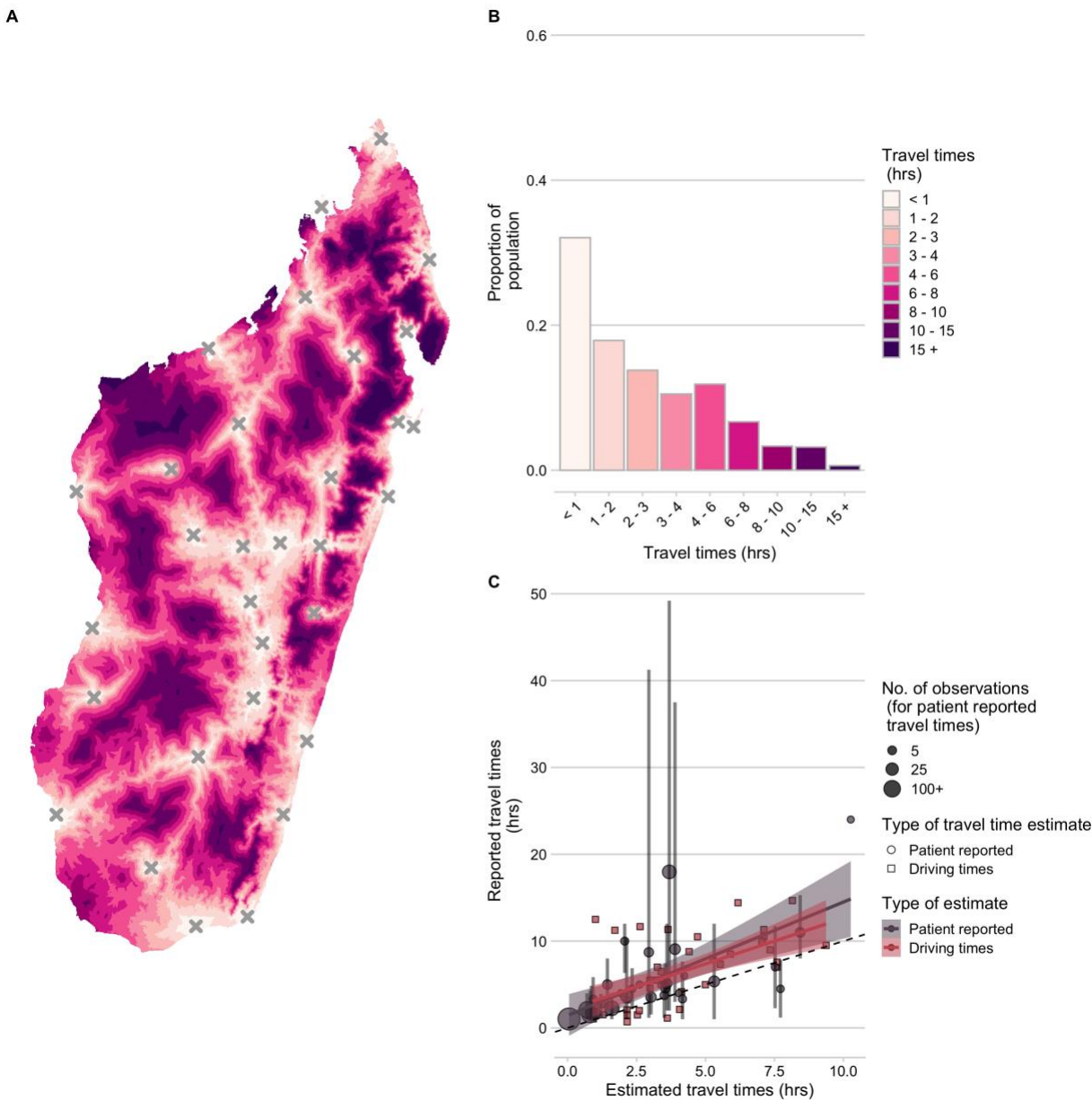
302 Data collection from the Moramanga District was approved by the Princeton University  
303 IRB (7801) and the Madagascar Ministry of Public Health Ethics Committee (105-  
304 MSANP/CE). Oral informed consent was obtained from all interviewed participants.  
305 Data collected from bite patients at the national level are maintained jointly by the  
306 Ministry of Health and IPM as a routine part of PEP provisioning.

## 307 **Results**

### 308 **Estimating access to ARMC**

309 Estimates of travel times to the closest ARMC varied greatly (Fig 2A), with  
310 approximately 36% of the population estimated to live over 3 hrs from a clinic (Fig 2B).  
311 We found that travel time estimates from the friction surface underestimated both

312 driving times across the country and patient-reported travel times to the Moramanga  
313 ARMC (Fig 2C), but were correlated with ground truthed driving and patient-reported  
314 times (Fig 3C, Fig S1.4). Patient-reported travel times were also significantly more  
315 variable than estimates from the friction surface (Fig S1.2). The friction surface  
316 assumes that the fastest available mode of transport is used across each grid cell  
317 (i.e. the presence of a road indicates that all travel through that grid cell is by vehicle).  
318 However, Moramanga ARMC patients reported using multiple modes of transport, with  
319 some individuals walking days to a clinic (Fig S1.3). Travel times weighted by  
320 population at the grid cell level were a better predictor than unweighted travel times or  
321 distance (Table S1.1). Therefore we use population-weighted travel time as a proxy for  
322 access at the commune/district level in subsequent analyses.



323

324 **Fig 2. Travel times to ARMC across Madagascar.**

325 (A) Estimated at an ~ 1 km<sup>2</sup> scale. (B) Distribution of the population across travel times.

326 (C) Correlation between ground-truthed travel times (mean of patient reported travel

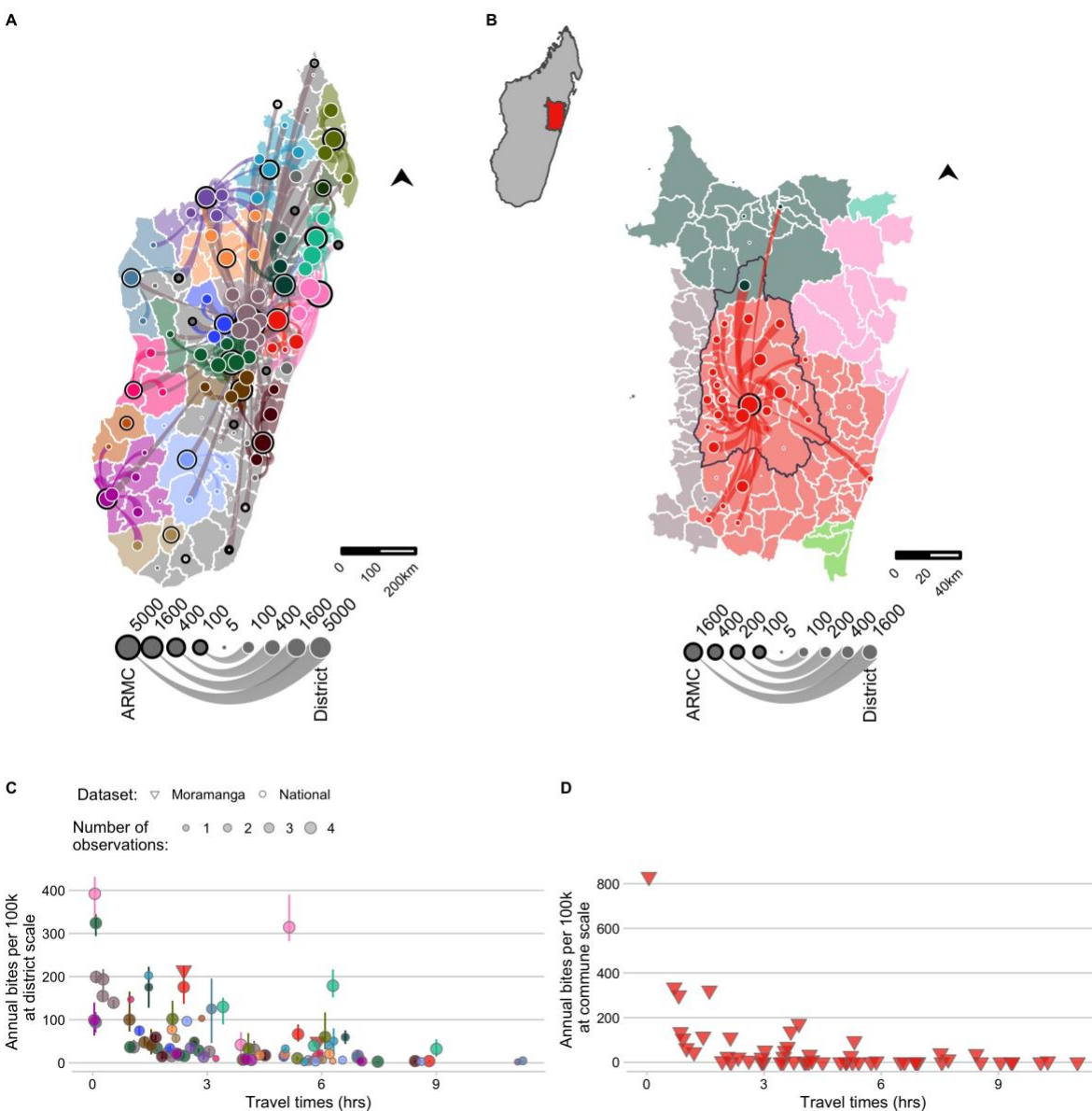
327 times to the Moramanga ARMC at the commune level and reported driving times

328 between GPS points) and friction surface travel time estimates. The vertical lines show

329 *the 95% quantiles for reported travel times and the point size shows the number of*  
330 *observations for each commune. The best fit lines (red and grey) and 95% confidence*  
331 *interval (shading) from a linear model where observed travel times are predicted by*  
332 *estimated travel times for each data source are also shown. The dashed black line is*  
333 *the 1:1 line.*

### 334 **Estimating bite incidence**

335 Most patients from each district reported to their closest ARMC by the weighted travel  
336 time metric (Fig 3). Accordingly, we assigned catchments based on which clinic was the  
337 closest for the majority of the population. While there are discrepancies between  
338 commune and district catchment assignments (Fig S2.1A), over 75% of the population  
339 in a given district or commune were closest to a single clinic (Fig S2.1C). We excluded  
340 any clinics which submitted less than 10 forms (excluded 11 catchments, Fig 3A grey  
341 polygons) and corrected for periods where clinics did not submit any forms (see  
342 Supplementary Appendix Section S2). After additionally excluding any year with less  
343 than 25% of forms submitted, our final dataset consisted of estimates of average bite  
344 incidence for 83 of 114 districts (Fig 3C), and 58 communes within the catchment of the  
345 Moramanga District (Fig 3D).



346

347 **Fig 3. The network of patient presentations and estimates of annual bite**  
348 **incidence.**

349 (A) at the district level for the national data and (B) commune level for the Moramanga  
350 data: circles with a black outline represent the total number of patients reporting to each  
351 ARMC for which we have data. Color corresponds to the clinic catchment. Circles with a

352 *white outline are the total number of bites reported for that administrative unit (plotted as*  
353 *the centroid). Lines show which ARMC those patients reported to, with the line width*  
354 *proportional to number of patients from that district reporting to the ARMC; flows of less*  
355 *than 5 patients were excluded. Out-of-catchment reporting is indicated where points and*  
356 *line colors are mismatched. For panel (A) districts in catchments excluded due to lack of*  
357 *forms submitted by the clinic are colored in grey. For (B) the inset of Madagascar shows*  
358 *the location of the enlarged area plotted, which shows the district of Moramanga*  
359 *(outlined in black), all communes included in it's catchment (red polygons), and other*  
360 *communes where bites were reported to colored by their catchment (C) The estimated*  
361 *average annual bite incidence from the national and Moramanga data plotted at the*  
362 *district scale (both datasets) and at the (D) commune scale (Moramanga dataset).*  
363 *Colors correspond to the clinic catchment, shape indicates the dataset, and the size of*  
364 *the point indicates the number of observations (i.e. the number of years for which data*  
365 *was available for the national data; note for Moramanga 33 months of data were used).*  
366 *The point lines indicate the range of estimated bite incidence for each district.*

367 Bite incidence estimates generally increased with decreasing weighted travel times at  
368 both scales, although there was considerable variation between catchments for the  
369 magnitude of this relationship (Fig 3C and D). For the national data, there were two  
370 outliers, Toamasina II (the sub-urban district surrounding the city of Toamasina) and  
371 Soanierana Ivongo, with higher bite incidence when compared to other districts with  
372 similar travel times. While the estimates from the Moramanga data showed higher  
373 reported incidence at low travel times at the commune level compared to the district

374 estimates, when aggregated to the district, bite incidence estimates fell within the  
375 ranges observed from the national dataset.

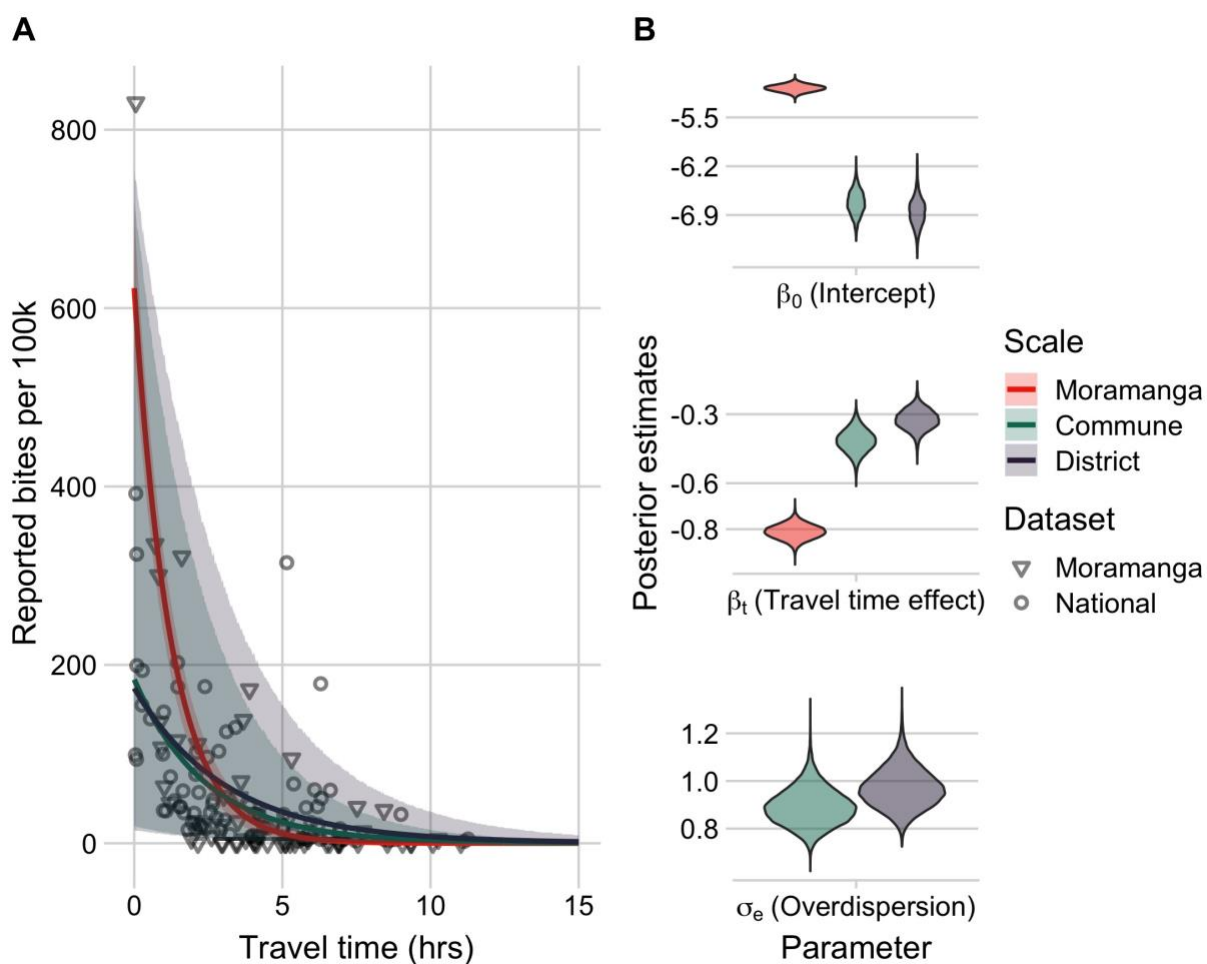
### 376 **Modeling reported bite incidence**

377 Travel times were a strong and consistent predictor of reported bite incidence in both  
378 datasets and across scales (Fig 4). Population size alone was the poorest fit to the data  
379 as estimated by DIC (Table S3.1), and models with population size as an additional  
380 covariate did not generate realistic predictions to the observed data or when used to  
381 predict out of fit (Figs S3.2 and S3.3).

382 For the national data, including a catchment random effect improved predictions (Fig  
383 S3.2 & Fig S3.3). However, after accounting for overdispersion, catchment effects were  
384 not clearly identifiable (Table S3.1) and the models resulted in similar predictions (Fig  
385 S3.6 & S3.7), indicating that catchment effects could not be differentiated from random  
386 variation in the data. Similarly, while the commune model fit to the Moramanga data  
387 generated stronger travel time effects (Fig 4B), after accounting for data overdispersion,  
388 the posterior estimates of the parameters overlapped for the commune and district  
389 models fit to the national data (Fig S3.4), and the model estimates were in general less  
390 robust to overdispersion than for the national data, particularly at low travel times (Fig  
391 S3.5).

392 As the predictions from the model fit to the Moramanga data without accounting for  
393 overdispersion fall within the prediction intervals for the models fit to the national data  
394 (Fig 4A), for subsequent predictions, we used the parameter estimates from models fit  
395 to the national data, which encompass the range of travel time effects observed in our

396 datasets. Moreover, our out-of-fit predictions to the data across scales suggest that the  
397 commune model is able to capture travel time impacts at the commune level (Fig S3.3),  
398 therefore we use both the district and commune model to disaggregate burden to the  
399 finest scale possible. Finally, we examined the sensitivity of models to how we corrected  
400 for underreporting of data, and found that parameter estimates of travel time impacts  
401 were similar across models and performed similarly in prediction (Fig S3.8 and Fig  
402 S3.9).



403



404 **Fig 4. Travel times as a predictor of reported bite incidence per 100,000 persons.**

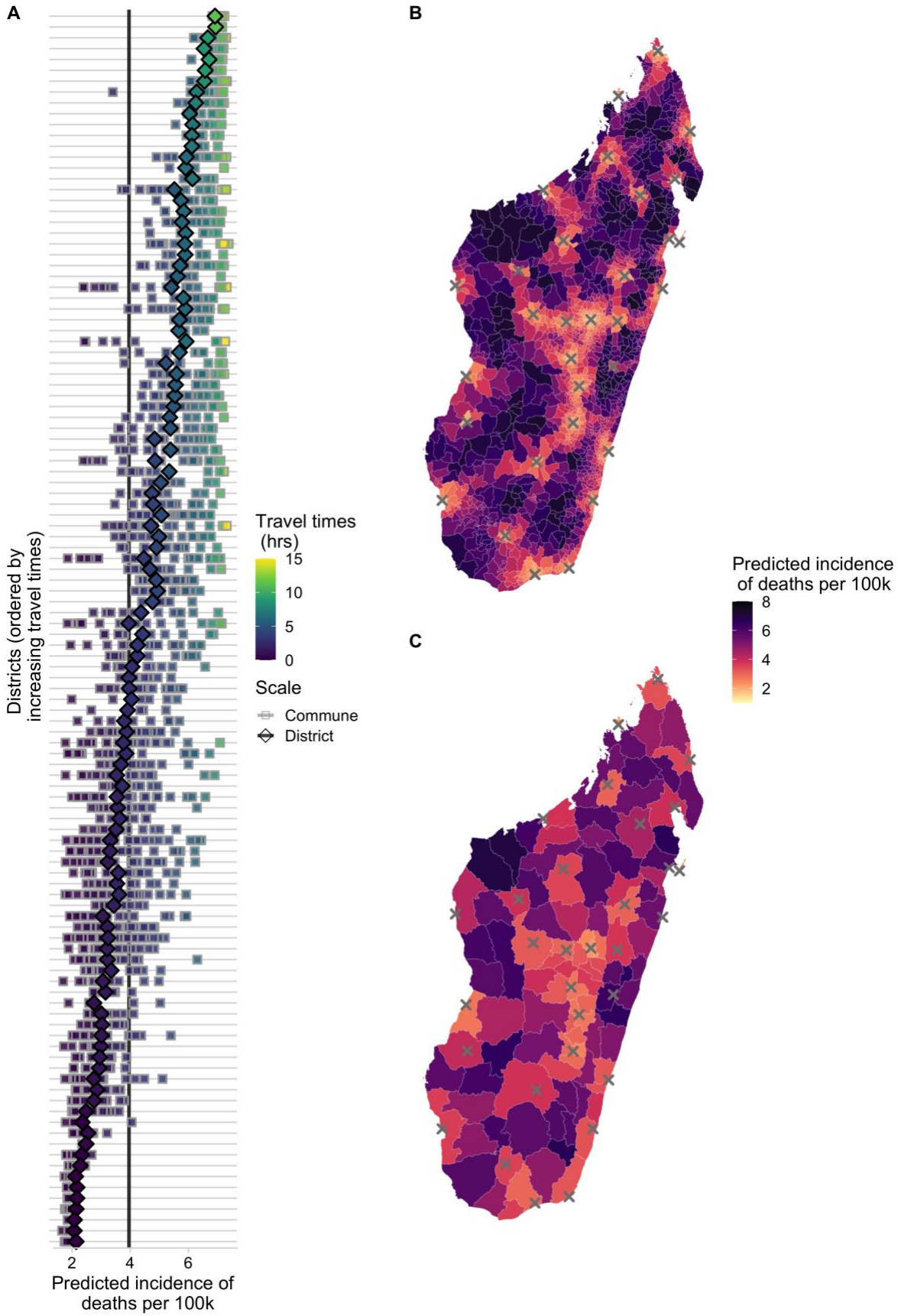
405 (A) The estimated relationship between travel time in hours (x-axis) and mean annual  
406 reported bite incidence (y-axis). The lines are the mean estimates and the envelopes  
407 are the 95% prediction intervals generated by drawing 1000 independent samples from  
408 the parameter posterior distributions for three candidate models: model with travel times  
409 at the 1) commune- and 2) district-level fitted to the national data with an overdispersion  
410 parameter ( $\sigma_e$ ) and 3) travel times at the commune level fitted to the Moramanga data  
411 with a fixed intercept and unadjusted for overdispersion. The points show the data:  
412 National data (circles) at the district level used to fit the District and Commune models,  
413 and Moramanga data (triangles) at the commune level used to fit the Moramanga  
414 model. (B) The posterior distribution of parameters from the respective models for the  
415 model intercept, travel time effect, and for overdispersion (national data only).

416 **Estimating human rabies deaths**

417 Overall, we estimate close to 1000 rabies deaths (95% PI: 800 - 1100) annually in  
418 Madagascar. Our estimates vary only slightly depending on the scale of the model  
419 (Table 2), but disaggregating deaths to the commune level shows considerable variation  
420 in predicted burden within districts (Fig 5A). Under the current system of 31 ARMCs in  
421 Madagascar, we estimate that use of PEP prevents approximately 800 (95% PI: 600 -  
422 1000) deaths due to rabies each year. In general, the incidence of rabies deaths  
423 increases with travel times to clinics, and there is significant sub-national variation when  
424 deaths are modeled at the district and commune scale, with the least accessible  
425 communities having most deaths (Fig 5B & C).

426 **Table 2. Model predictions of average annual reported bite incidence, total**  
427 **deaths, and deaths averted at the national level for the two models (commune**  
428 **level and district level models with travel time predictor and an overdispersion**  
429 **parameter); 95% prediction interval in parentheses.**

Model	Reported bite incidence per 100k	Burden of deaths	Deaths averted
Commune	85 (56 - 129)	963 (795 - 1118)	801 (644 - 968)
District	85 (52 - 136)	958 (752 - 1156)	807 (609 - 1005)



431 **Fig 5. Spatial variation in predicted incidence of human rabies deaths per 100,000**  
432 **persons.**

433 *(A) for each district (y-axis) in Madagascar. Diamonds show the predicted incidence for*  
434 *the district model and squares show predicted incidence for the commune model fit to*  
435 *the National data for all communes in a district. Points are colored and districts ordered*  
436 *by travel times. The vertical lines show the average national incidence of human rabies*  
437 *deaths for the commune (grey) and district (black) models. Incidence mapped to the (B)*  
438 *commune- and (C) district-level from the respective models; grey X's show locations of*  
439 *current ARMC.*

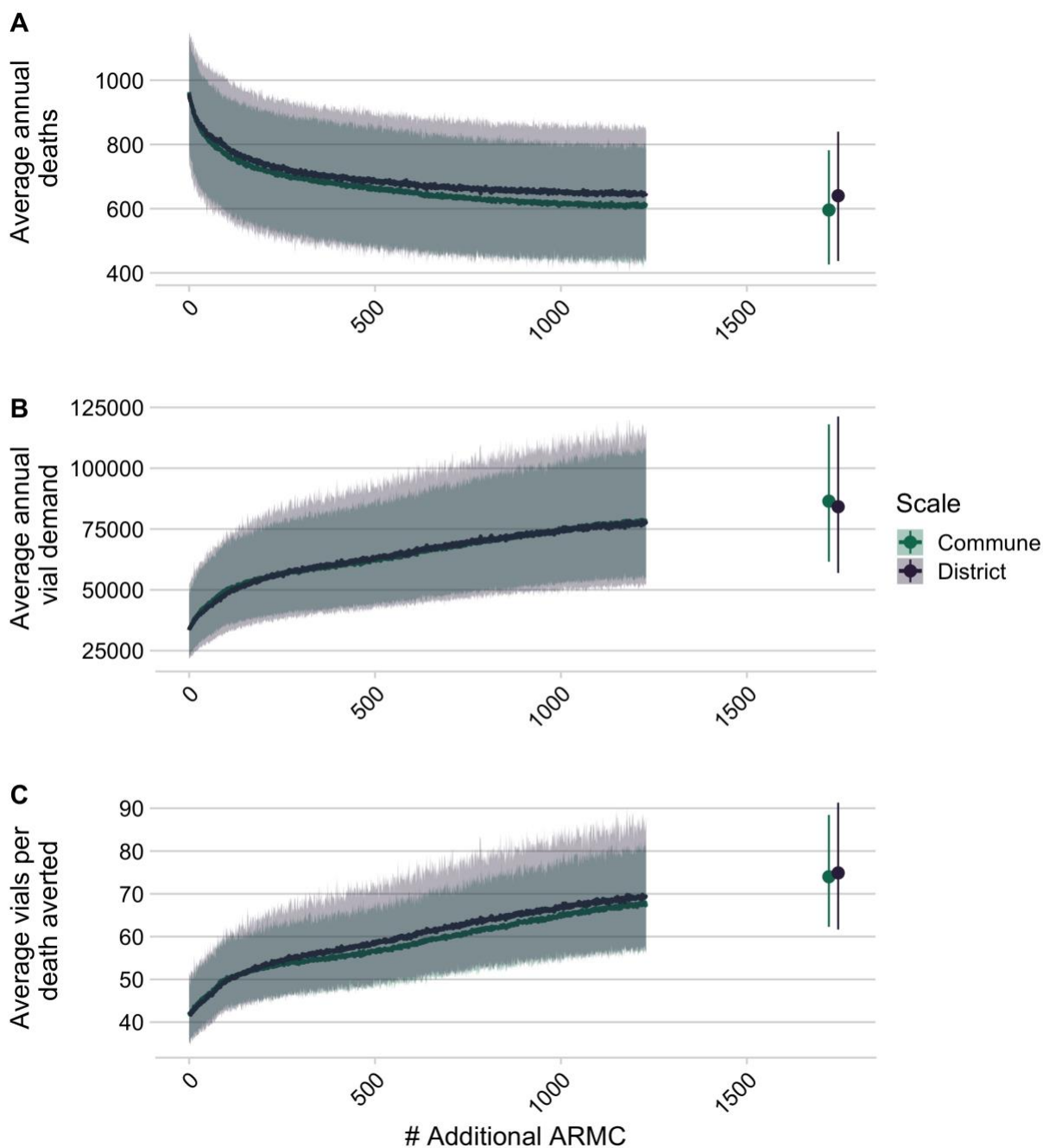
#### 440 **Estimating the impact of PEP provisioning**

441 For a subset of additional clinics (n = 83, up to one per district), we compared three  
442 methods of ranking for expanding PEP provisioning. We found that targeted expansion  
443 of PEP to clinics based on the proportion of the population they reduced travel times for  
444 resulted in fewest deaths (Fig S5.1). Therefore, we used this approach for simulating  
445 expansion of PEP to a larger set of clinics (N = 1733 ). Here we report results from the  
446 commune model, as estimates were consistent across models (Fig 6 and  
447 Supplementary appendix, section S5).

448 We estimated that strategic PEP expansion to these additional 83 clinics (1 per district)  
449 reduced rabies deaths by 19% (95% PI: 14 - 23%) (Fig 6A). With one clinic per  
450 commune (where available, N = 1696), we see a further reduction of 38% (95% PI: 30 -  
451 46%). However, reductions in burden saturate as more clinics are added (Fig S5.2).  
452 Even when all CSB II provisioning PEP, our model still predicts 600 (95% PI: 400 - 800)

453 deaths per annum, and average reporting of rabies exposures remains approximately  
454 66% (95% PI: 32 - 77%) (Fig S5.5); as more clinics are added, reported bite incidence  
455 saturates (Fig S5.4), and patients shift which clinic they report to (S5.7 & S5.8).

456 Vial demand also outpaces reductions in burden (Fig 6B), with more vials needed per  
457 death averted (Fig 6C). Our model predicts an increase from 33500 vials (95% PI:  
458 22900 - 49400) per annum under current provisioning but with the abridged intradermal  
459 regimen (i.e. visits on days 0, 3, 7), to ~56900 vials (95% PI: 40200 - 77800) with 250  
460 clinics providing PEP, and ~86400 vials (95% PI: 61600 - 118000) if all CSB IIs  
461 provision PEP. In these scenarios, clinic catchment populations and throughput  
462 decrease, with clinics seeing fewer patients per day (S5.6).



463

464 **Fig 6. Impact of expanded PEP access on deaths, deaths averted and vial**  
465 **demand.**

466 (A) Decrease in deaths due to rabies, (B) increase in total # of vials as additional ARMC  
467 are added at the national level, and (C) increase in vials needed per death averted

468 *based on the two models of reported bites. Lines are the mean of 1000 simulations with*  
469 *envelopes representing 95% prediction intervals. The points show when all additional*  
470 *csb ( $N = 1733$ ) clinics have been added).*

## 471 **Sensitivity Analyses**

472 To quantify which parameters contribute to the uncertainty in our estimates, we  
473 performed univariate sensitivity analyses, varying parameters in both the bite incidence  
474 model (Table S6.1) and the decision tree (Table S6.2). These analyses show that  
475 assumptions of the underlying rabies exposure incidence ( $E_i$ ) contribute most  
476 uncertainty to burden estimates (Fig S6.1) and impacts of PEP access (Fig S6.2).  
477 Uncertainty in bite model parameters contribute less to uncertainty in estimates of  
478 burden. For the estimates of vial demand, uncertainty around the model intercept  
479 (i.e. the baseline reported bite incidence) has most impact, rather than the travel time  
480 effect or the overdispersion parameter (Fig S6.3). Finally, scaling of incidence with  
481 population size (Fig S4.2) modulates the impact of travel times on deaths, with positive  
482 scaling of rabies incidence with population size (i.e. more rabies in more populated  
483 places) dampening and negative scaling exacerbating the relationship between access  
484 and deaths (Fig S6.4A). However, the impact of adding clinics remains broadly the  
485 same (Fig S6.4B). Overall, while uncertainty in the underlying rabies exposure  
486 incidence results in considerable variation in our burden estimates, the projected impact  
487 of travel times and of access to PEP are qualitatively similar across parameter  
488 assumptions.

## 489 **Discussion**

### 490 **Main findings**

491 We find that the burden of rabies in Madagascar is likely concentrated in areas with  
492 poor PEP access. We estimate that current PEP provisioning (at 31 clinics) averts  
493 45%% of deaths that would otherwise occur, and that expanding PEP access should  
494 reduce mortality, with provisioning in one clinic per district (N = 83), or per commune (N  
495 = 1733), expected to reduce mortality by 33% and 16%, respectively. However,  
496 improved PEP provisioning is unlikely to eliminate rabies deaths; with over 600 deaths  
497 expected even with PEP at all CSB II (N = 1733). This is partly because travel times  
498 remain high (> 2 hrs as estimated by the friction surface for over 10% of the population,  
499 Fig S5.4) even after expanding PEP to all major health centers. With reduced travel  
500 times, over 20% of exposures will still not seek PEP (Fig S5.5), resulting in ~1.65 rabies  
501 deaths per 100,000 people. PEP is expected to remain cost-effective as provisioning  
502 expands, to a maximum of 450 USD per death averted (assuming 5 USD per vial),  
503 similar to other estimates [4]. While our quantitative predictions depend on assumptions  
504 of underlying rabies exposure incidence, the qualitative patterns regarding travel time  
505 impacts remain robust and are useful in identifying strategies for provisioning PEP.

### 506 **Limitations**

507 Data limitations introduced bias and uncertainty to our estimates. For example, travel  
508 times from the MAP friction surface underestimated patient-reported travel times, with  
509 discrepancies between assigned transport speeds (from the Open Street Map user  
510 community, or country cluster data [18]) and realities of local travel. In Madagascar, the



511 presence of paved roads does not necessarily reflect their quality or the modes of  
512 transport used. Moramanga ARMC patients reported various transport methods and  
513 highly variable travel times even within a single commune. While patient-reported travel  
514 times may lack precision from recall and estimation error, they likely better reflect lived  
515 experience; validated travel times [31] could improve estimates of spatial health  
516 inequities. Similarly, modeled estimates of population distribution [19] also introduce  
517 uncertainty. Our analysis of data from the Moramanga District indicate that variation at  
518 the sub-district level is high and impacts health seeking behavior. However, we lacked  
519 fine-scale data from other catchments for comparison. Additionally, we had to correct for  
520 underreporting and incomplete data; strengthening surveillance and routine data  
521 collection should improve understanding of health seeking behavior and access, and  
522 support monitoring and evaluation of PEP provisioning.

523 We assumed geographic access to PEP was the primary driver of health-seeking  
524 behavior, but socioeconomic status, education and awareness about rabies [27,32–34]  
525 all play a role. In Madagascar, where PEP is free-of-charge, the main cost to patients is  
526 transport and time lost. More remote communities tend to be of lower socioeconomic  
527 and educational status [2], so travel time may be a proxy for these correlated variables.  
528 We also assume that all ARMC reliably provision PEP, but a 2019 KAP survey reported  
529 clinics experiencing stock-outs [25]. Most ARMC charge fees (from 0.50 - 3.00 USD for  
530 consultations, wound treatment, etc [25]) which may also act as barriers. Significant  
531 overdispersion in the data that cannot be explained by travel times suggests that clinic-  
532 level variation (e.g. vaccine availability and charges) and regional differences (e.g. dog

533 populations, outbreaks, awareness) further influence health-seeking behavior and  
534 vaccine demand.

535 Our burden estimates were most sensitive to assumptions about rabies exposure  
536 incidence, drawn from studies in the Moramanga District [15] and elsewhere [4]. As  
537 incidence of rabies exposures varies over time and space [35,36], we incorporated  
538 uncertainty into our estimates, but we did not find qualitative differences in the effects of  
539 travel times on rabies deaths. Our simplifying assumptions, regarding patient  
540 compliance, which is generally high in Madagascar [15], and on complete efficacy of  
541 PEP, are unlikely to greatly influence our burden estimates [28]. Likewise we do not  
542 account for differential risk for severely exposed patients not receiving Immunoglobulins  
543 (RIG), which is only available at IPM in Antananarivo, but recent studies show that even  
544 in the absence of RIG, PEP is extremely effective [4]. Although our estimates could be  
545 improved with better data on rabies incidence, health-seeking behavior, and PEP  
546 provisioning, predicting PEP impacts will remain challenging given the complex  
547 interactions between socioeconomic factors, access to and quality of care and human  
548 behavior, as illustrated by the complex case studies in Box 1.

#### 549 **Box 1: case studies of of health seeking behavior for PEP in Madagascar**

550 1. Anosibe An'ala District (population ~ 100,265), south of Moramanga, has moderate  
551 incidence of bite patients (~ 54/100,000 persons) even though travel times often  
552 exceed 24 hours. While a road connects the main Anosibe An'ala commune to the  
553 Moramanga ARMC, it is only passable by large trucks during much of the rainy  
554 season, with speeds usually < 10km per hour. Over 9% of patients from Anosibe  
555 An'ala had been in close proximity or touched a person that died from rabies (four  
556 suspect human rabies deaths of patients who did not receive any PEP), whilst of

557 patients with Category II and III exposures that were interviewed, 11/19 (58%) were  
558 bitten by probable rabid dogs. Given the high travel times (although underestimated  
559 by the friction surface) and incidence of reported rabies exposures and deaths, we  
560 predict a large but unobserved rabies burden in this remote community (~6.02  
561 deaths per year) and we ranked an ARMC provisioning PEP in Anosibe An'ala 28th  
562 for travel time reductions. Other remote communities likely experience similar high  
563 and unrecognized burden, but improved surveillance is necessary to identify such  
564 areas. Notably, bite patients in this district demonstrate willingness to travel for free  
565 PEP (in some cases walking 3 days to a clinic) with awareness of rabies risk.  
566 Community outreach and active surveillance in other remote areas could also  
567 greatly improve people's awareness of risk and health seeking behavior.

568 2. Recently, a middle aged taxi driver died of rabies in suburban Antananarivo. The  
569 day after being bitten by an unknown dog, he reported to a clinic that referred him  
570 to the ARMC at IPM, approximately one hour's drive from his home. His family  
571 urged him to get PEP, but he did not believe his risk was high and decided not to  
572 seek further care. He developed symptoms two weeks later and was confirmed as  
573 a rabies death by the National Rabies Reference Laboratory. Despite prompt  
574 reporting and referral, and socioeconomic indicators suggesting a high care-  
575 seeking probability, this person did not receive PEP. His story highlights the need  
576 for sensitization about rabies and how PEP at peripheral clinics (even in areas with  
577 reasonable access) could prevent additional deaths, but also how PEP alone is  
578 unlikely to prevent all rabies deaths.

## 579 **Broader context**

580 Recent studies have estimated access to health-seeking behavior and PEP completion  
581 and adherence, but not directly linked these estimates to burden [7,37]. Our approach  
582 for incorporating access to vaccines (echoing [38–42]) into burden estimation methods  
583 could guide provisioning of PEP to maximize impacts. This approach will have most  
584 value in settings with limited PEP access and poor health seeking, but will be less

585 valuable where rabies exposures make up a small fraction of patients reporting for PEP  
586 e.g. [43,44]. Our revised estimate of rabies deaths in Madagascar using this approach  
587 was higher than previous [15], which assumed uniform reporting of 85%, but remained  
588 within the range of other empirical and modeling studies from low-income countries  
589 [26,27,45–47].

590 Our estimates of vial demand depend on use of the new abridged intradermal regimen  
591 [29], which has been adopted by the Ministry of Health in Madagascar. However, most  
592 ARMC staff were not aware of WHO classifications of exposure categories, and  
593 vaccination of Category I exposures (those not requiring PEP) remains common  
594 practice, comprising 20% of vial demand in Moromanga [15]. We predict that as clinics  
595 are expanded, throughput (daily patients reporting to a clinic) will decrease. This may  
596 make provisioning PEP more challenging and vial demand less predictable, leading to  
597 stock outs or wastage. Decentralized provisioning mechanisms, for example adopting  
598 routine childhood vaccine supply chains, or novel vaccine delivery methods such as  
599 drones [48], may mitigate these challenges. When nerve tissue vaccines were used in  
600 Madagascar, clinics requested vaccine upon demand and PEP access was more  
601 widespread, but provisioning the more expensive cell culture vaccines to all clinics  
602 became too costly [16]. Widespread vaccine provisioning is therefore feasible given  
603 Madagascar's health infrastructure, if cost barriers are removed.

604 Gavi investment could greatly reduce the access and cost barriers to PEP [6,7,28,49].  
605 Currently, each clinic in Madagascar serves an average catchment of 780,000 persons.  
606 Latin American countries, where significant progress has been made towards  
607 elimination, aim for one PEP clinic per 100,000 persons. In Madagascar this would

608 require around 212 additional ARMC. We predict that Gavi investment would be highly  
609 cost-effective, greatly reducing deaths by expanding PEP supply to underserved areas.  
610 However, our results suggest that PEP expansion alone cannot prevent the majority of  
611 rabies deaths, and even given maximal access, achieving ‘the last mile’, preventing  
612 deaths in the most remote populations, will require disproportionate resources [50]. To  
613 achieve ‘Zero by 30’, mass dog vaccination will be key to interrupting transmission, and  
614 eliminating deaths. Integrated Bite Case Management (IBCM) uses bite patient risk  
615 assessments to determine rabies exposure status, guide PEP administration, and  
616 trigger investigations of rabid animals, potentially identifying other exposed persons  
617 [15,51,52]. IBCM is one way to manage PEP effectively [43] and as it relies on exposed  
618 persons reporting to clinics, expanding PEP access could strengthen this surveillance  
619 framework. These same issues of access, however apply to both dog vaccination and  
620 surveillance, and understanding spatial heterogeneities will be critical to determining  
621 how control and prevention interventions can be best implemented [53,54].

## 622 **Conclusion**

623 Our study suggests that rabies deaths in Madagascar disproportionately occur in  
624 communities with the poorest access to PEP and that expanding PEP access should  
625 reduce deaths. Without data on rabies incidence and exposure risk, targeting PEP  
626 expansion to underserved areas is a strategic way to reduce rabies burden and provide  
627 equitable access, for example, by expanding provisioning to clinics serving populations  
628 that target an evidence-based travel time threshold or catchment size. Implementing  
629 outreach programs to raise awareness should further increase the efficacy of PEP

630 expansion by improving care seeking. Better surveillance is also needed to understand  
631 the geographical distribution of rabies exposures and identify populations most at risk.  
632 Gavi investment could support countries to more equitably provision PEP and overcome  
633 barriers to access ([9], see Box 1 for case studies), but as PEP alone cannot prevent all  
634 rabies deaths, investment should be used to catalyse mass dog vaccination to interrupt  
635 transmission, and eventually eliminate rabies deaths.

## 636 **Acknowledgements**

637 We thank all the clinicians and staff at the ARMC across the country. We are grateful to  
638 IPM and the Ministry of Public Health who collect and maintain data on PEP  
639 provisioning. In particular, we thank the GIS unit for assistance with spatial data,  
640 Michael Luciano Tantely for sharing driving time data, and Claire Leblanc, Rila  
641 Ratovoson, and Daouda Kassie for sharing results of their work in the Moramanga  
642 District. In addition, we thank Jean Hyacinthe Randrianarisoa, Ranaivoarimanana,  
643 Fierenantsoa Randriamahatana, Esther Noiarisaona, Cara Brook, Amy Winter, Christian  
644 Ranaivoson, John Friar, and Amy Wesolowski for assistance. This work was funded by  
645 grants from the Center for Health and Wellbeing and the Department of Ecology and  
646 Evolutionary Biology at Princeton University to CJEM and MR. MR is supported by an  
647 NSF Graduate Research Fellowship. KH is supported by the Wellcome Trust  
648 (207569/Z/17/Z).

649

## 650 **References**

- 651 1. World Health Organization. World health statistics 2018: Monitoring health for the  
652 SDGs sustainable development goals. World Health Organization; 2018.
- 653 2. Peters DH, Garg A, Bloom G, Walker DG, Brieger WR, Hafizur Rahman M. Poverty  
654 and access to health care in developing countries. *Annals of the New York Academy of*  
655 *Sciences*. 2008;1136: 161–171.
- 656 3. Maina J, Ouma PO, Macharia PM, Alegana VA, Mitto B, Fall IS, et al. A spatial  
657 database of health facilities managed by the public health sector in sub Saharan Africa.  
658 *Scientific Data*. 2019;6: 134. doi:[10.1038/s41597-019-0142-2](https://doi.org/10.1038/s41597-019-0142-2)
- 659 4. WHO Rabies Modelling Consortium. The potential effect of improved provision of  
660 rabies post-exposure prophylaxis in gavi-eligible countries: A modelling study. *The*  
661 *Lancet Infectious Diseases*. 2019;19: 102–111.
- 662 5. Organization WH, others. Rabies vaccines: WHO position paper, april 2018–  
663 recommendations. *Vaccine*. 2018;36: 5500–5503.
- 664 6. Sreenivasan N, Li A, Shiferaw M, Tran CH, Wallace R, Blanton J, et al. Overview of  
665 rabies post-exposure prophylaxis access, procurement and distribution in selected  
666 countries in asia and africa, 2017–2018. *Vaccine*. 2019;37: A6–A13.
- 667 7. Tarantola A, Bianchi S, Cappelle J, Ly S, Chan M, In S, et al. Rabies postexposure  
668 prophylaxis noncompletion after dog bites: Estimating the unseen to meet the needs of  
669 the underserved. *American Journal of Epidemiology*. 2018;187: 306–315.

- 670 8. Hampson K, Coudeville L, Lembo T, Sambo M, Kieffer A, Attlan M, et al. Estimating  
671 the global burden of endemic canine rabies. *PLoS Negl Trop Dis*. 2015;9: e0003709.
- 672 9. Wentworth D, Hampson K, Thumbi SM, Mwatondo A, Wambura G, Chng NR. A  
673 social justice perspective on access to human rabies vaccines. *Vaccine*. 2019;37: A3–  
674 A5.
- 675 10. World Health Organization. Zero by 30: The global strategic plan to end human  
676 deaths from dog-mediated rabies by 2030. World Health Organization; 2018.
- 677 11. Gavi: Vaccine investment strategy. [https://www.gavi.org/our-](https://www.gavi.org/our-alliance/strategy/vaccine-investment-strategy)  
678 [alliance/strategy/vaccine-investment-strategy](https://www.gavi.org/our-alliance/strategy/vaccine-investment-strategy); Gavi, the vaccine alliance;
- 679 12. Scott TP, Coetzer A, Fahrion AS, Nel LH. Addressing the Disconnect between the  
680 Estimated, Reported, and True Rabies Data: The Development of a Regional African  
681 Rabies Bulletin. *Frontiers in veterinary science*. 2017;4: 18.
- 682 13. Taylor LH, Hampson K, Fahrion A, Abela-Ridder B, Nel LH. Difficulties in estimating  
683 the human burden of canine rabies. *Acta tropica*. 2017;165: 133–140.
- 684 14. Knobel DL, Cleaveland S, Coleman PG, Fèvre EM, Meltzer MI, Miranda MEG, et al.  
685 Re-evaluating the burden of rabies in Africa and Asia. *Bulletin of the World health*  
686 *Organization*. 2005;83: 360–368.
- 687 15. Rajeev M, Edosoa G, Hanitriniaina C, Andriamandimby SF, Guis H, Ramiandrasoa  
688 R, et al. Healthcare utilization, provisioning of post-exposure prophylaxis, and  
689 estimation of human rabies burden in Madagascar. *Vaccine*. 2019;37: A35–A44.



- 690 16. Andriamandimby SF, Heraud J-M, Ramiandrasoa R, Ratsitorahina M,  
691 Rasambainarivo JH, Dacheux L, et al. Surveillance and control of rabies in La Reunion,  
692 Mayotte, and Madagascar. *Veterinary Research*. 2013;44: 1–9.
- 693 17. Reynes J-M, Andriamandimby SF, Razafitrimo GM, Razainirina J, Jeanmaire EM,  
694 Bourhy H, et al. Laboratory surveillance of rabies in humans, domestic animals, and  
695 bats in madagascar from 2005 to 2010. *Advances in preventive medicine*. 2011;2011.
- 696 18. Weiss DJ, Nelson A, Gibson HS, Temperley W, Peedell S, Lieber A, et al. A global  
697 map of travel time to cities to assess inequalities in accessibility in 2015. *Nature*.  
698 2018;553: 333–336. doi:[10.1038/nature25181](https://doi.org/10.1038/nature25181)
- 699 19. Linard C, Gilbert M, Snow RW, Noor AM, Tatem AJ. Population distribution,  
700 settlement patterns and accessibility across Africa in 2010. *PloS one*. 2012;7: e31743–  
701 e31743. doi:[10.1371/journal.pone.0031743](https://doi.org/10.1371/journal.pone.0031743)
- 702 20. Gelman A, Hill J. *Data analysis using regression and multilevel/hierarchical models*.  
703 Cambridge university press; 2006.
- 704 21. Plummer M. *Rjags: Bayesian graphical models using mcmc*. 2019. Available:  
705 <https://CRAN.R-project.org/package=rjags>
- 706 22. Cleaveland S, FEvre EM, Kaare M, Coleman PG. Estimating human rabies mortality  
707 in the united republic of tanzania from dog bite injuries. *Bulletin of the World Health*  
708 *Organization*. 2002.

- 709 23. Ratsitorahina M, Rasambainarivo JH, Raharimanana S, Rakotonandrasana H,  
710 Andriamiarisoa M-P, Rakalomanana FA, et al. Dog ecology and demography in  
711 antananarivo, 2007. *BMC Veterinary Research*. 2009;5: 21.
- 712 24. Sambo M, Hampson K, Changalucha J, Cleaveland S, Lembo T, Lushasi K, et al.  
713 Estimating the size of dog populations in Tanzania to inform rabies control. *Veterinary*  
714 *sciences*. 2018;5: 77.
- 715 25. Leblanc C. Rabies in Madagascar: A three-pronged survey of knowledge and  
716 practices among health care providers from anti-rabies treatment centers, veterinarians  
717 and the community of Moramanga. PhD thesis, Cnam de Sante Publique. 2019.
- 718 26. Beyene TJ, Mourits MC, Kidane AH, Hogeveen H. Estimating the burden of rabies  
719 in ethiopia by tracing dog bite victims. *PLoS One*. 2018;13: e0192313.
- 720 27. Hampson K, Dobson A, Kaare M, Dushoff J, Magoto M, Sindoya E, et al. Rabies  
721 exposures, post-exposure prophylaxis and deaths in a region of endemic canine rabies.  
722 *PLoS Negl Trop Dis*. 2008;2: e339.
- 723 28. Changalucha J, Steenson R, Grieve E, Cleaveland S, Lembo T, Lushasi K, et al.  
724 The need to improve access to rabies post-exposure vaccines: Lessons from Tanzania.  
725 *Vaccine*. 2019;37: A45–A53.
- 726 29. Tarantola A, Ly S, Chan M, In S, Peng Y, Hing C, et al. Intradermal rabies post-  
727 exposure prophylaxis can be abridged with no measurable impact on clinical outcome in  
728 Cambodia, 2003-2014. *Vaccine*. 2019;37: A118–A127.

- 729 30. R Core Team. R: A language and environment for statistical computing. Vienna,  
730 Austria: R Foundation for Statistical Computing; 2019. Available: [https://www.R-](https://www.R-project.org/)  
731 [project.org/](https://www.R-project.org/)
- 732 31. Ray N, Ebener S. AccessMod 3.0: Computing geographic coverage and  
733 accessibility to health care services using anisotropic movement of patients.  
734 International Journal of Health Geographics. 2008;7: 63. doi:[10.1186/1476-072X-7-63](https://doi.org/10.1186/1476-072X-7-63)
- 735 32. Etheart MD, Kligerman M, Augustin PD, Blanton JD, Monroe B, Fleurinord L, et al.  
736 Effect of counselling on health-care-seeking behaviours and rabies vaccination  
737 adherence after dog bites in haiti, 2014–15: A retrospective follow-up survey. The  
738 Lancet Global Health. 2017;5: e1017–e1025.
- 739 33. Barbosa Costa G, Gilbert A, Monroe B, Blanton J, Ngam Ngam S, Recuenco S, et  
740 al. The influence of poverty and rabies knowledge on healthcare seeking behaviors and  
741 dog ownership, cameroon. PLoS one. 2018;13: e0197330.
- 742 34. Sambo M, Lembo T, Cleaveland S, Ferguson HM, Sikana L, Simon C, et al.  
743 Knowledge, attitudes and practices (kap) about rabies prevention and control: A  
744 community survey in tanzania. PLoS Neglected Tropical Diseases. 2014;8: e3310.
- 745 35. Hampson K, Dushoff J, Bingham J, Bruckner G, Ali Y, Dobson A. Synchronous  
746 cycles of domestic dog rabies in sub-saharan africa and the impact of control efforts.  
747 Proceedings of the National Academy of Sciences. 2007;104: 7717–7722.
- 748 36. Hampson K, Dushoff J, Cleaveland S, Haydon DT, Kaare M, Packer C, et al.  
749 Transmission dynamics and prospects for the elimination of canine rabies. PLoS  
750 Biology. 2009;7: e1000053.

- 751 37. Zaidi SMA, Labrique AB, Khowaja S, Lotia-Farrukh I, Irani J, Salahuddin N, et al.  
752 Geographic variation in access to dog-bite care in pakistan and risk of dog-bite  
753 exposure in karachi: Prospective surveillance using a low-cost mobile phone system.  
754 PLoS Negl Trop Dis. 2013;7: e2574.
- 755 38. Hegde ST, Salje H, Sazzad HM, Hossain MJ, Rahman M, Daszak P, et al. Using  
756 healthcare-seeking behaviour to estimate the number of nipah outbreaks missed by  
757 hospital-based surveillance in bangladesh. International journal of epidemiology.  
758 2019;48: 1219–1227.
- 759 39. MacPherson P, Khundi M, Nliwasa M, Choko AT, Phiri VK, Webb EL, et al.  
760 Disparities in access to diagnosis and care in blantyre, malawi, identified through  
761 enhanced tuberculosis surveillance and spatial analysis. BMC medicine. 2019;17: 21.
- 762 40. Poletti P, Parlamento S, Fayyisaa T, Feyyiss R, Lusiani M, Tsegaye A, et al. The  
763 hidden burden of measles in ethiopia: How distance to hospital shapes the disease  
764 mortality rate. BMC medicine. 2018;16: 1–12.
- 765 41. Metcalf CJE, Tatem A, Bjornstad O, Lessler J, O'Reilly K, Takahashi S, et al.  
766 Transport networks and inequities in vaccination: Remoteness shapes measles vaccine  
767 coverage and prospects for elimination across africa. Epidemiology & Infection.  
768 2015;143: 1457–1466.
- 769 42. Alegana VA, Wright J, Pezzulo C, Tatem AJ, Atkinson PM. Treatment-seeking  
770 behaviour in low-and middle-income countries estimated using a bayesian model. BMC  
771 medical research methodology. 2017;17: 67.

- 772 43. Rysava K, Miranda M, Zapatos R, Lapiz S, Rances P, Miranda L, et al. On the path  
773 to rabies elimination: The need for risk assessments to improve administration of post-  
774 exposure prophylaxis. *Vaccine*. 2019;37: A64–A72.
- 775 44. Wallace RM, Reses H, Franka R, Dilius P, Fenelon N, Orciari L, et al. Establishment  
776 of a canine rabies burden in haiti through the implementation of a novel surveillance  
777 program. *PLoS Neglected Tropical Diseases*. 2015;9: e0004245.
- 778 45. Ly S, Buchy P, Heng NY, Ong S, Chhor N, Bourhy H, et al. Rabies situation in  
779 cambodia. *PLoS Negl Trop Dis*. 2009;3: e511.
- 780 46. Sudarshan MK, Madhusudana SN, Mahendra BJ, Rao NSN, Ashwath Narayana  
781 DH, Abdul Rahman S, et al. Assessing the burden of human rabies in india: Results of a  
782 national multi-center epidemiological survey. *International Journal of Infectious  
783 Diseases*. 2007;11: 29–35.
- 784 47. Dhand NK, Gyeltshen T, Firestone S, Zangmo C, Dema C, Gyeltshen R, et al. Dog  
785 bites in humans and estimating human rabies mortality in rabies endemic areas of  
786 bhutan. *PLoS Neglected Tropical Diseases*. 2011;5: e1391.
- 787 48. Boeras DI, Collins BC, Peeling RW. The use of drones in the delivery of rural  
788 healthcare. *Revolutionizing Tropical Medicine: Point-of-Care Tests, New Imaging  
789 Technologies and Digital Health*. 2019; 615–632.
- 790 49. Li AJ, Sreenivasan N, Siddiqi UR, Tahmina S, Penjor K, Sovann L, et al. Descriptive  
791 assessment of rabies post-exposure prophylaxis procurement, distribution, monitoring,  
792 and reporting in four asian countries: Bangladesh, bhutan, cambodia, and sri lanka,  
793 2017–2018. *Vaccine*. 2019;37 Suppl 1: A14–A19. doi:[10.1016/j.vaccine.2018.10.011](https://doi.org/10.1016/j.vaccine.2018.10.011)

- 794 50. Del Rio Vilas VJ, Freire de Carvalho MJ, Vigilato MA, Rocha F, Vokaty A, Pompei  
795 JA, et al. Tribulations of the last mile: Sides from a regional program. *Frontiers in*  
796 *Veterinary Science*. 2017;4: 4.
- 797 51. Lechenne M, Mindekem R, Madjadinan S, Oussiguéré A, Moto DD, Naissengar K,  
798 et al. The importance of a participatory and integrated one health approach for rabies  
799 control: The case of n'Djamena, chad. *Tropical medicine and infectious disease*.  
800 2017;2: 43.
- 801 52. Undurraga EA, Meltzer MI, Tran CH, Atkins CY, Etheart MD, Millien MF, et al. Cost-  
802 effectiveness evaluation of a novel integrated bite case management program for the  
803 control of human rabies, haiti 2014–2015. *The American journal of tropical medicine*  
804 *and hygiene*. 2017;96: 1307–1317.
- 805 53. Ferguson EA, Hampson K, Cleaveland S, Consunji R, Deray R, Friar J, et al.  
806 Heterogeneity in the spread and control of infectious disease: Consequences for the  
807 elimination of canine rabies. *Scientific reports*. 2015;5: 18232.
- 808 54. Metcalf CJE, Cohen C, Lessler J, McAnerney J, Ntshoe G, Puren A, et al.  
809 Implications of spatially heterogeneous vaccination coverage for the risk of congenital  
810 rubella syndrome in south africa. *Journal of the Royal Society Interface*. 2013;10:  
811 20120756.