

1 **Metabolic syndrome increases COVID-19-related mortality in the**

2 **UK Biobank sample**

3

4 **Short title**

5 Metabolic syndrome and COVID-19

6

7 **Authors**

8 Filip Morys¹, Alain Dagher¹

9 ¹Montreal Neurological Institute, Department of Neurology and Neurosurgery, McGill

10 University, Montreal, Quebec, Canada

11

12 **Correspondence**

13 Alain Dagher

14 Montreal Neurological Institute

15 3801 University, H3A 2B4 Montreal, Canada

16 alain.dagher@mcgill.ca

17

18 **Conflict of interest**

19 The authors have declared that no competing interests exist

20

21 **Keywords**

22 Metabolic syndrome, obesity, COVID-19

23

24 **Abstract**

25 Previous studies link obesity and individual components of metabolic syndrome to
26 increased hospitalisations and death rates of patients with COVID-19. Here, in two
27 overlapping samples of over 1,000 individuals from the UK Biobank we investigate
28 whether metabolic syndrome, and its constituent components, increased waist
29 circumference, dyslipidaemia, hypertension, diabetes, and systemic inflammation,
30 are related to increased COVID-19 infection and mortality rates. Using logistic
31 regression and controlling for confounding variables such as socioeconomic status,
32 age, sex or ethnicity, we find that individuals with pre-existing metabolic syndrome
33 (measured on average eleven years prior to 2020) have an increased risk for
34 COVID-19-related death (odds ratio 1.67). We also find that specific factors
35 contributing to increased mortality are serum glucose levels, systolic blood pressure
36 and waist circumference.

37

38 **Introduction**

39 Since the beginning of the COVID-19 pandemic, mounting evidence supports an
40 association between obesity and poor outcomes (1–3). The association holds for
41 both obesity and for obesity-associated metabolic syndrome, which entails
42 hypertension, diabetes, dyslipidaemia, and systemic inflammation (4). Similarly,
43 obesity and excess adipose tissue have also been associated with higher risk of
44 SARS-CoV-2 infection (5).

45 Previous studies, however, have tended to use small sample sizes, focus
46 predominantly on the effects of body mass index (BMI) as a measure of obesity,
47 investigate components of metabolic syndrome separately, or not account for
48 confounding factors, such as ethnicity or socioeconomic status (5–8). Since ethnicity
49 and socioeconomic status are themselves associated with obesity and metabolic
50 syndrome (9,10), they could confound interpretation of COVID-19 analyses.

51 Here, we aim to present a comprehensive evaluation of metabolic risk factors that
52 might be related to poor health outcomes in COVID-19 patients while controlling for
53 confounding variables and limiting potential collider bias, which has previously
54 resulted in incorrect epidemiological conclusions (11,12). We investigate whether
55 metabolic syndrome is related to higher chance for SARS-CoV-2 infection, but also
56 COVID-19-related death.

57

58 **Materials and Methods**

59 *Participants*

60 In this study, we used the UK Biobank dataset – a large scale study with extensive
61 phenotyping carried out in the United Kingdom (13). This study was performed under
62 UK Biobank application ID 35605. COVID-19 test results in the UK Biobank dataset

63 are derived from the Public Health England microbiology database Second
64 Generation Surveillance System that are dynamically linked to the UK Biobank
65 database (14). Here we only included individuals who were recorded as tested for
66 COVID-19. We distinguished between two samples for two aims of our project:
67 Sample 1 – a larger sample (n=12,694) of all individuals who were tested for COVID-
68 19 between 16th March 2020 and 24th August 2020, to investigate risk of COVID-19
69 infection and how it is related to metabolic syndrome; and Sample 2, a subset of
70 Sample 1 consisting of individuals who tested positive for COVID-19 (n=1,152). We
71 also obtained data on mortality from COVID-19 for all the individuals included in our
72 study population. Among the individuals who tested positive, 180 people (15%) died
73 from COVID-19 infection, allowing us to investigate how metabolic syndrome
74 influences COVID-19-related mortality.

75 Sample characteristics can be found in Table 1. All participants signed informed
76 consents prior to participating in the UK Biobank study, which was approved by the
77 North-West Multi-centre Research Ethics Committee (11/NW/0382). All UK Biobank
78 actions are overseen by the UK Biobank Ethics Advisory Committee.

79

80 Table 1 Participants characteristics.

81

Measure	Sample 1 Mean (SD) / Percentage (n=12,694)	Sample 2 Mean (SD) / Percentage (n=1,152)	Mean
COVID-19 positive patients	9.00%	100%	
COVID-19 mortality rate	1.42%	15.63%	
Age [years]	70 (8)	68 (9)	
Sex distribution	51.84% women	47.14% women	
Waist circumference [cm]	92.21 (13.73)	93.50 (13.92)	

Serum HDL [mmol/l]	1.43 (0.38)	1.36 (0.34)
Serum TG [mmol/l]	1.77 (1.02)	1.79 (1.04)
HbA1c [mmol/mol]	35.77 (4.34)	35.93 (4.74)
Serum glucose [mmol/l]	5.00 (0.63)	4.99 (0.65)
Serum C-reactive protein [mg/l]	2.86 (4.58)	3.06 (5.53)
Systolic blood pressure [mmHg]	138.43 (18.55)	137.28 (18.54)
Diastolic blood pressure [mmHg]	82.26 (9.97)	82.49 (10.28)
Diabetes prevalence	8.02%	9.98 %
Hypertension prevalence	42.28%	41.93%

82

83 *Measures used in the study*

84 To investigate how metabolic syndrome influences COVID-19 infection,
85 hospitalisation, and mortality rates, we used the following measures: waist
86 circumference, serum triglycerides (TG) levels, serum high density lipoprotein (HDL)
87 levels, serum glycated haemoglobin (HbA1c) levels, serum glucose levels, serum C-
88 reactive protein levels (15), previous diabetes diagnosis, resting systolic and diastolic
89 blood pressure (mean values of two measurements), and hypertension diagnosis. In
90 our analyses, we also controlled for age, sex, socioeconomic status (Townsend
91 deprivation index (16), highest achieved educational qualifications, mean family
92 income), smoking status, and ethnic background, physical location of a laboratory
93 where COVID-19 test was performed, and the origin of sample used for COVID-19
94 test (e.g. nose, throat etc.). For Sample 2, we also used mortality data provided by
95 the UK Biobank – COVID-19-related death was described using the ICD10 identifier
96 U07.1. All COVID-19-unrelated variables were collected on average 11 years prior to
97 COVID-19 tests.

98 Prior to the analyses, all numeric variables were standardized, all serum level values
99 were log-transformed, and we excluded outliers from the sample (2.2 interquartile
100 range below 1st or above 3rd quartile). If participants were tested for COVID-19
101 more than once, they were considered positive if at least one test result was positive.

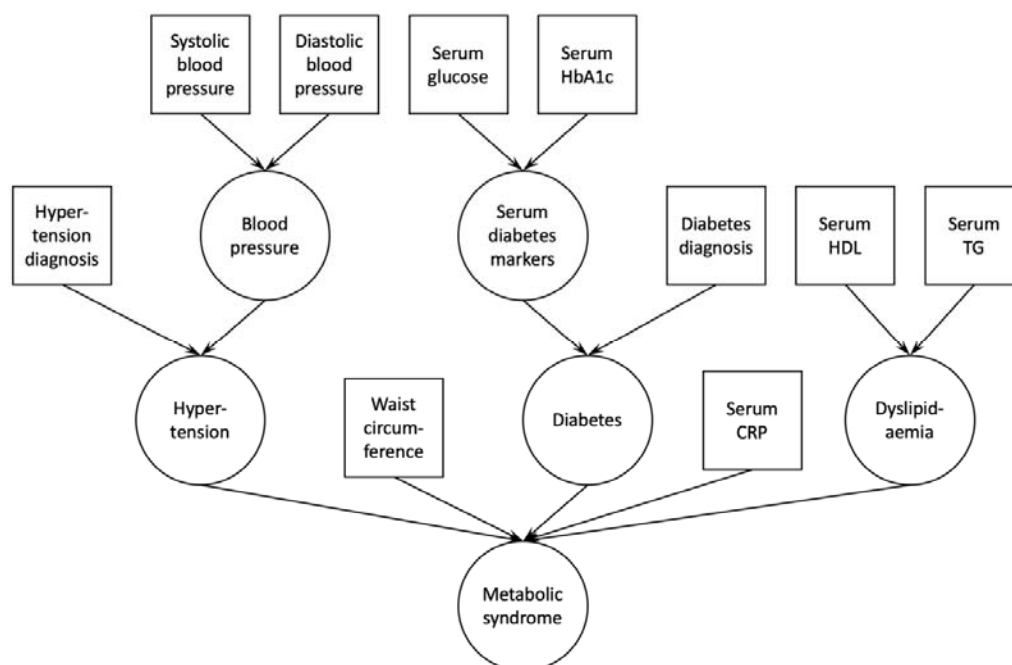
102 *Statistical analyses*

103 The same analyses were performed for each of the two population samples. Data
104 were analysed using R (v. 3.6.0). First, using confirmatory factor analysis in lavaan
105 (v. 0.6-7), we estimated the fit of a latent variable 'metabolic syndrome', which
106 consisted of waist circumference, serum C-reactive protein levels, a latent variable
107 'dyslipidaemia' (serum HDL and TG levels), and two other latent variables, diabetes
108 and hypertension. The latent variable 'diabetes' consisted of serum glucose and
109 HbA1c levels, as another latent variable, and diabetes diagnosis, while the latent
110 variable 'hypertension' consisted of a blood pressure latent variable (systolic and
111 diastolic blood pressure), and hypertension diagnosis (Figure 1). The model was
112 estimated using robust maximum likelihood estimation and model's fit was evaluated
113 using common indices: comparative fit index (CFI), root mean square error of
114 approximation (RMSEA), and standardized root mean square residual (SRMR).
115 Acceptable fit was confirmed if $CFI > 0.9$, $RMSEA < 0.1$, and $SRMR < 0.08$.

116 Next, we extracted components of the latent variable 'metabolic syndrome' for each
117 participant and entered them in a logistic regression. The outcome variable in logistic
118 regression for Sample 1 was COVID-19 test result, while for Sample 2, the outcome
119 variable was COVID-19-related death.

120 In the analyses we used a set of confounding variables to calculate adjusted odds
121 ratio for testing positive for COVID-19: age, sex socioeconomic status, smoking
122 status, and ethnic background.

123 Finally, for Sample 2 we explored how individual factors contributed to the COVID-
124 19-related mortality by using a logistic regression with individual components of
125 metabolic syndrome, instead of the latent variable 'metabolic syndrome'.
126 A script for the analysis of the data as well as the output of statistical software can be
127 found at https://github.com/FilipMorys/COVID_MetS.



128

129 Figure 1 Confirmatory factor analysis model used to derive the latent variable 'metabolic syndrome'. Squares
130 indicate measured variables; circles indicate latent variables. HbA1c – glycated haemoglobin; HDL – high density
131 lipoprotein; TG – triglycerides; CRP – C-reactive protein.

132

133 Results

134 *Metabolic syndrome and the risk of COVID-19 infections*

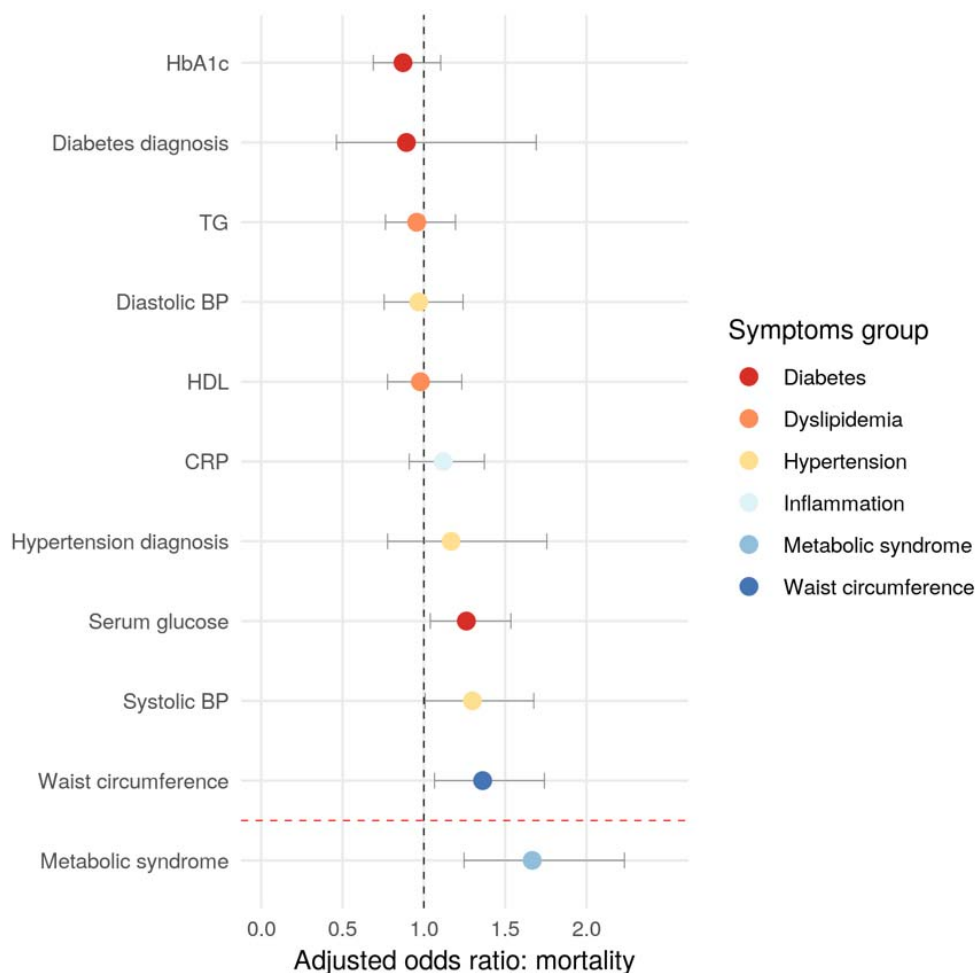
135 In Sample 1, the confirmatory factor analysis provided an acceptable model fit
136 (CFI=0.934, RMSEA=0.067, SRMR=0.041). In the logistic regression the relation
137 between metabolic syndrome and the chance of having a positive SARS-CoV-2 test

138 did not reach our pre-set statistical significance threshold ($p=0.057$; odds ratio 1.10;
139 95% confidence intervals (CI): 0.997-1.214).

140 *Metabolic syndrome is related to an increased COVID-19-related mortality*

141 In Sample 2, the confirmatory factor analysis provided an acceptable model fit
142 (CFI=0.923, RMSEA=0.072, SRMR=0.049). Logistic regression showed that
143 metabolic syndrome is related to an increased mortality rate among COVID-19
144 positive individuals ($p<0.0001$) – adjusted odds ratio: 1.67 (95% CI: 1.25-2.23),
145 pointing to a 67% increase for each unit increase on the metabolic syndrome latent
146 variable (Figure 2).

147 Exploratory analysis with individual components of metabolic syndrome revealed that
148 higher systolic blood pressure, higher serum glucose, and higher waist
149 circumference increased the chance of COVID-19-related mortality – the adjusted
150 odds ratio were 1.30 (95% CI: 1.01-1.68), 1.26 (95% CI: 1.04-1.54), and 1.36 (95%
151 CI: 1.07-1.74), respectively (systolic blood pressure: $p=0.044$, serum glucose levels:
152 $p=0.02$, waist circumference: $p=0.017$; Figure 2).



153

154 Figure 2 Odds ratio for COVID-19-related death. Dots represent adjusted odds ratios, error bars represent 95%
155 confidence intervals.

156

157 Discussion

158 We investigated whether metabolic syndrome, here defined by increased waist
159 circumference, increased TG levels, decreased HDL levels, systemic inflammation,
160 and the presence of diabetes and hypertension, is a risk factor for COVID-19
161 infection and mortality. We were able to show that a one unit increase of the latent
162 variable 'metabolic syndrome' results in a 67% higher risk of death because of
163 COVID-19. In contrast, the relation between metabolic syndrome and the likelihood
164 of test positivity was weaker, with an odds ratio of only 1.1 and a confidence interval

165 that included a null effect. In sum, metabolic syndrome contributes little to no risk of
166 test positivity but substantially increases the odds of an adverse outcome.

167 The results of our study are in line with previous reports linking obesity and individual
168 components of metabolic syndrome with poor COVID-19 outcomes and death
169 (1,3,8,17). Bansal et al. review some of the physiological mechanisms that might
170 mediate the relationship between obesity, related comorbidities and worse outcomes
171 of COVID-19 (18). These include an enhanced expression of the angiotensin I
172 converting enzyme 2 (ACE2), diabetes-related microvascular dysfunction, increased
173 expression of pro-inflammatory cytokines, or activation of the renin-angiotensin-
174 aldosterone system related to hypertension (18). Our results suggest that a number
175 of those mechanisms might at the same time contribute to increased mortality rates
176 related to COVID-19.

177 Previous studies investigating COVID-19 in the UK Biobank used positive test results
178 obtained between March 16th and April 26th as a proxy of severe COVID-19 (8,19).
179 The rationale for this is that during this time, only patients admitted to hospitals and
180 with COVID-19-like symptoms were tested for COVID-19. Here, we decided to not
181 use this approach for several reasons. First, it is possible that individuals with
182 COVID-19-like symptoms for which they were admitted to a hospital but who did not
183 have COVID-19 were only infected after being admitted. In those cases, positive
184 tests would not reflect COVID-19 severity. Second, it is not possible to determine the
185 exact reason for which inpatients were tested for COVID-19 – positive test results
186 might therefore not only reflect severity of COVID-19 disease, but also testing in
187 anticipation of isolating patients who test positive. For example, patients having to
188 undergo unrelated medical procedures might have undergone precautionary testing.

189 We therefore recommend that studies that used this approach as a proxy for COVID-
190 19 severity be interpreted with caution.

191 For the interpretation of our and similar results from the UK Biobank, it is important to
192 note that the UK Biobank is not a sample representative of the entire UK population
193 and therefore the findings might not be generalizable (20). Furthermore,
194 observational studies such as ours are prone to collider bias, which has already
195 been identified in UK Biobank COVID-19 investigations (21). Collider bias occurs
196 when the sample population is conditioned on a variable that correlates with the
197 variables of interest. For example, during the time period of the current study, it is
198 thought that health workers were more likely to be tested for COVID-19, which may
199 have contributed to incorrect conclusion that cigarette smoking is protective (21). Our
200 study population includes individuals who were seen in a health care setting, who
201 may therefore have a higher incidence of obesity and metabolic syndrome than the
202 general population. However, it is difficult to see how this would account for the
203 effect of obesity on death from COVID-19 among people who tested positive for the
204 virus.

205 In addition, COVID-19 testing in the UK during the time period of this study was
206 generally restricted to individuals with symptoms such as fever, cough, or loss of
207 smell or taste – asymptomatic COVID-19 individuals were less likely to be tested.
208 This might further increase the extent of collider bias in this and similar studies
209 investigating the predictors of COVID-19 severity or mortality. Current strategies to
210 account for such bias or measure the extent thereof rely on models and strong
211 assumptions that might be incorrect. We therefore suggest that our findings be
212 interpreted with caution. Nonetheless, our model did account for potential collider
213 variables or confounds such as socioeconomic status, ethnicity and age.

214 In sum, we used the UK Biobank dataset to confirm that, in individuals who tested
215 positive for COVID-19 in the early stages of the pandemic, metabolic syndrome, and
216 especially visceral adiposity, hypertension, and hyperglycaemia, were associated
217 with an increased risk of death.

218

219 **Funding**

220 This work was supported by a Foundation Scheme award to AD from the Canadian
221 Institutes of Health Research. The funders had no role in study design, data
222 collection and analysis, decision to publish, or preparation of the manuscript.

223

224 **References**

- 225 1. Dietz W, Santos-Burgoa C. Obesity and its Implications for COVID-19 Mortality
226 [Internet]. Vol. 28, Obesity. Blackwell Publishing Inc.; 2020 [cited 2020 Aug
227 27]. p. 1005. Available from:
228 <https://onlinelibrary.wiley.com/doi/full/10.1002/oby.22818>
- 229 2. Stefan N, Birkenfeld AL, Schulze MB, Ludwig DS. Obesity and impaired
230 metabolic health in patients with COVID-19 [Internet]. Vol. 16, Nature Reviews
231 Endocrinology. Nature Research; 2020 [cited 2020 Aug 27]. p. 341–2.
232 Available from: www.nature.com/nrendo
- 233 3. Gao F, Zheng KI, Wang XB, Sun QF, Pan KH, Wang TY, et al. Obesity Is a
234 Risk Factor for Greater COVID-19 Severity [Internet]. Vol. 43, Diabetes Care.
235 American Diabetes Association Inc.; 2020 [cited 2020 Aug 27]. p. E72–4.
236 Available from: <https://doi.org/10.2337/dc20-0682>
- 237 4. Alberti KG, Eckel RH, Grundy SM, Zimmet PZ, Cleeman JI, Donato KA, et al.
238 Harmonizing the metabolic syndrome: a joint interim statement of the
239 International Diabetes Federation Task Force on Epidemiology and
240 Prevention; National Heart, Lung, and Blood Institute; American Heart
241 Association; World Heart Federation; International. Circulation. 2009
242 Oct;120(16):1640–5.
- 243 5. Yates T, Razieh C, Zaccardi F, Davies MJ, Khunti K. Obesity and risk of
244 COVID-19: analysis of UK biobank [Internet]. Primary Care Diabetes. Elsevier
245 Ltd; 2020 [cited 2020 Aug 27]. Available from:
246 <https://www.ncbi.nlm.nih.gov/pmc/articles/PMC7254007/>
- 247 6. Townsend MJ, Kyle TK, Stanford FC. Outcomes of COVID-19: disparities in
248 obesity and by ethnicity/race [Internet]. Vol. 44, International Journal of

- 249 Obesity. Springer Nature; 2020 [cited 2020 Aug 27]. p. 1807–9. Available from:
250 <https://doi.org/10.1038/s41366-020-0635-2>
- 251 7. Xie J, Zu Y, Alkhatib A, Pham TT, Gill F, Jang A, et al. Metabolic Syndrome
252 and COVID-19 Mortality Among Adult Black Patients in New Orleans. *Diabetes*
253 *Care* [Internet]. 2020 Aug 25 [cited 2020 Aug 27];dc201714. Available from:
254 <http://care.diabetesjournals.org/lookup/doi/10.2337/dc20-1714>
- 255 8. Hamer M, Gale CR, Kivimäki M, Batty GD. Overweight, obesity, and risk of
256 hospitalization for COVID-19: A community-based cohort study of adults in the
257 United Kingdom. *Proc Natl Acad Sci* [Internet]. 2020 Aug 11 [cited 2020 Aug
258 27];202011086. Available from:
259 <http://www.pnas.org/lookup/doi/10.1073/pnas.2011086117>
- 260 9. Arroyo-Johnson C, Mincey KD. Obesity Epidemiology Worldwide [Internet].
261 Vol. 45, *Gastroenterology Clinics of North America*. W.B. Saunders; 2016
262 [cited 2020 Aug 27]. p. 571–9. Available from:
263 </pmc/articles/PMC5599163/?report=abstract>
- 264 10. Pigeyre M, Rousseaux J, Trouiller P, Dumont J, Goumidi L, Bonte D, et al.
265 How obesity relates to socio-economic status: Identification of eating behavior
266 mediators. *Int J Obes* [Internet]. 2016 Nov 1 [cited 2020 Aug 27];40(11):1794–
267 801. Available from: <https://pubmed.ncbi.nlm.nih.gov/27377952/>
- 268 11. Gaibazzi N, Tuttolomondo D, Guidorossi A, Botti A, Tedeschi A, Martini C, et
269 al. Smoking Prevalence is Low in Symptomatic Patients Admitted for COVID-
270 19. [Internet]. medRxiv. Cold Spring Harbor Laboratory Press; 2020 Jun [cited
271 2020 Aug 28]. Available from:
272 <http://medrxiv.org/lookup/doi/10.1101/2020.05.05.20092015>
- 273 12. Miyara M, Tubach F, POURCHER V, Morelot-Panzini C, Pernet J, Haroche J,

- 274 et al. Low rate of daily active tobacco smoking in patients with symptomatic
275 COVID-19. Qeios [Internet]. 2020 May 9 [cited 2020 Aug 28]; Available from:
276 <https://doi.org/10.32388/WPP19W.4>
- 277 13. Sudlow C, Gallacher J, Allen N, Beral V, Burton P, Danesh J, et al. UK
278 Biobank: An Open Access Resource for Identifying the Causes of a Wide
279 Range of Complex Diseases of Middle and Old Age. PLOS Med [Internet].
280 2015 Mar 31 [cited 2020 Mar 19];12(3):e1001779. Available from:
281 <https://dx.plos.org/10.1371/journal.pmed.1001779>
- 282 14. Armstrong J, Rudkin JK, Allen N, Crook DW, Wilson DJ, Wyllie DH, et al.
283 Dynamic linkage of covid-19 test results between public health england's
284 second generation surveillance system and uk biobank. Microb Genomics
285 [Internet]. 2020 Jun 18 [cited 2020 Sep 8];6(7):1–9. Available from:
286 [https://www.microbiologyresearch.org/content/journal/mgen/10.1099/mgen.0.0](https://www.microbiologyresearch.org/content/journal/mgen/10.1099/mgen.0.00397)
287 [00397](https://www.microbiologyresearch.org/content/journal/mgen/10.1099/mgen.0.00397)
- 288 15. Elliott P, Peakman TC, UK Biobank. The UK Biobank sample handling and
289 storage protocol for the collection, processing and archiving of human blood
290 and urine. Int J Epidemiol [Internet]. 2008 Apr [cited 2020 Mar 19];37(2):234–
291 44. Available from: <http://www.ncbi.nlm.nih.gov/pubmed/18381398>
- 292 16. Townsend P, Phillimore P, Beattie A. Health and Deprivation: Inequality and
293 the North [Internet]. Croom Helm; 1988. Available from:
294 <https://books.google.ca/books?id=K9kOAAAAQAAJ>
- 295 17. Costa FF, Rosário WR, Ribeiro Farias AC, de Souza RG, Duarte Gondim RS,
296 Barroso WA. Metabolic syndrome and COVID-19: An update on the
297 associated comorbidities and proposed therapies [Internet]. Vol. 14, Diabetes
298 and Metabolic Syndrome: Clinical Research and Reviews. Elsevier Ltd; 2020

- 299 [cited 2020 Aug 27]. p. 809–14. Available from:
300 [/pmc/articles/PMC7286828/?report=abstract](#)
- 301 18. Bansal R, Gubbi S, Muniyappa R. Metabolic Syndrome and COVID 19:
302 Endocrine-Immune-Vascular Interactions Shapes Clinical Course.
303 Endocrinology [Internet]. 2020 Jun 30 [cited 2020 Sep 18];161(10):1–15.
304 Available from: <https://academic.oup.com/endo>
- 305 19. Kuo C-L, Pilling LC, Atkins JL, Masoli JAH, Delgado J, Kuchel GA, et al. APOE
306 e4 Genotype Predicts Severe COVID-19 in the UK Biobank Community
307 Cohort. Journals Gerontol Ser A [Internet]. 2020 May 26 [cited 2020 Sep
308 29];XX:1–2. Available from:
309 <https://academic.oup.com/biomedgerontology/advance->
310 [article/doi/10.1093/gerona/glaa131/5843454](https://academic.oup.com/biomedgerontology/advance-article/doi/10.1093/gerona/glaa131/5843454)
- 311 20. Fry A, Littlejohns TJ, Sudlow C, Doherty N, Adamska L, Sprosen T, et al.
312 Comparison of Sociodemographic and Health-Related Characteristics of UK
313 Biobank Participants with Those of the General Population. Am J Epidemiol
314 [Internet]. 2017 Nov 1 [cited 2020 Sep 2];186(9):1026–34. Available from:
315 <http://creativecommons>.
- 316 21. Griffith G, Morris TT, Tudball M, Herbert A, Mancano G, Pike L, et al. Collider
317 bias undermines our understanding of COVID-19 disease risk and severity.
318 medRxiv [Internet]. 2020 May 20 [cited 2020 Sep 2];2020.05.04.20090506.
319 Available from:
320 <https://www.medrxiv.org/content/10.1101/2020.05.04.20090506v2>
321