

Comparison of infection control strategies to reduce COVID-19 outbreaks in homeless shelters in the United States

Lloyd A.C. Chapman PhD¹, Margot Kushel MD², Sarah N. Cox MSPH³, Ashley Scarborough MPH³, Caroline Cawley MPH⁴, Trang Nguyen MPH PhD³, Isabel Rodriguez-Barraquer MD PhD¹, Bryan Greenhouse MD¹, Elizabeth Imbert MD MPH⁵, and Nathan C. Lo MD PhD¹

¹Department of Medicine, University of California, San Francisco, San Francisco, CA, USA

²Center for Vulnerable Populations, Zuckerberg San Francisco General Hospital and Trauma Center, University of California, San Francisco, San Francisco, CA, USA

³San Francisco Department of Public Health, San Francisco, CA, USA

⁴Department of Emergency Medicine, University of California, San Francisco, San Francisco, CA, USA

⁵Division of HIV, Infectious Diseases, and Global Medicine, University of California, San Francisco, San Francisco, CA, USA

Running title: COVID-19 outbreaks in homeless shelters

Abstract Word Count: 250/250

Main Text Word Count: 3,003/3,000

Figures: 3

Tables: 2

Keywords: COVID-19, homelessness, shelters, infection control, outbreaks

Correspondence:

Lloyd A.C. Chapman, PhD and Nathan C. Lo, MD PhD
University of California, San Francisco
Department of Medicine
San Francisco, CA, USA 94110

Conflicts of Interest: The authors declare no conflicts of interest.

Email:

Dr Lloyd A.C. Chapman (Lloyd.Chapman@ucsf.edu)
Dr Nathan C. Lo (Nathan.Lo@ucsf.edu)

Summary: Combining symptom-screening, twice-weekly PCR testing and universal masking is unlikely to prevent COVID-19 outbreaks in high-risk congregate homeless shelters and settings with high community incidence, but may be sufficient in lower-risk settings. Alternative housing arrangements are needed in high-risk settings.

Abstract

Background: Multiple COVID-19 outbreaks have occurred in homeless shelters across the US, highlighting an urgent need to identify the most effective infection control strategy to prevent future outbreaks.

Methods: We developed a microsimulation model of SARS-CoV-2 transmission in a homeless shelter and calibrated it to data from cross-sectional polymerase-chain-reaction (PCR) surveys conducted during COVID-19 outbreaks in five shelters in three US cities from March 28 to April 10, 2020. We estimated the probability of averting a COVID-19 outbreak in a representative homeless shelter of 250 residents and 50 staff over 30 days under different infection control strategies, including daily symptom-based screening, twice-weekly PCR testing and universal mask wearing.

Results: Basic reproduction number (R_0) estimates for the observed outbreaks ranged from 2.9 to 6.2. The probability of averting an outbreak diminished with higher transmissibility (R_0) within the simulated shelter and increasing incidence in the local community. With moderate community incidence (~30 confirmed cases/1,000,000 people/day), the estimated probabilities of averting an outbreak in a low-risk ($R_0=1.5$), moderate-risk ($R_0=2.9$), and high-risk ($R_0=6.2$) shelter were: 0.33, 0.11 and 0.03 for daily symptom-based screening; 0.52, 0.27, and 0.04 for twice-weekly PCR testing; 0.47, 0.20 and 0.06 for universal masking; and 0.68, 0.40 and 0.08 for these strategies combined.

Conclusions: In high-risk homeless shelter environments and locations with high community incidence of COVID-19, even intensive infection control strategies are unlikely to prevent outbreaks, suggesting a need for non-congregate housing arrangements for people experiencing homelessness. In lower-risk environments, combined interventions should be adopted to reduce outbreak risk.

Introduction

The COVID-19 pandemic caused by infection with severe acute respiratory syndrome coronavirus 2 (SARS-CoV-2) poses great risk to people experiencing homelessness. Across the US, the estimated 568,000 people who experience homelessness nightly [1] are likely to suffer a disproportionate disease burden and need for hospitalization [2,3]. People experiencing homelessness are on average older and have a high prevalence of comorbidities that are risk factors for severe COVID-19 [2]. Multiple outbreaks in homeless shelters have occurred in several cities including San Francisco, Boston, Seattle and Atlanta with attack rates of up to 67% [4–7]. Homeless shelters have had to remain open in most cities despite high incidence of infection in the community, concern about the risk of further outbreaks, and uncertainty over the effectiveness of different infection control strategies. There is an immediate need to identify the best infection control strategy to reduce the risk of outbreaks and assess the safety of continuing to operate congregate shelters where transmission in the community is high.

The role of shelters and associated infection control practices in transmission of COVID-19 among people experiencing homelessness is still poorly understood. Given current understanding that SARS-CoV-2 virus is transmitted predominantly through respiratory droplets, with some airborne and fomite transmission [8], there is a need to consider policies to limit transmission within high-density congregate living environments. Different infection control strategies are currently recommended based on the level of transmission in the external community [9]. These include routine symptom screening, polymerase chain reaction (PCR) testing, universal mask wearing, and relocation of individuals at high risk of severe disease to non-congregate settings [10]. There is limited evidence on the effectiveness of strategies to reduce transmission in

congregate settings, and thus further research is urgently needed to guide city-level policy across the US.

The goal of this study is to identify the most effective infection control strategy to slow the spread of COVID-19 among people experiencing homelessness who reside in shelters. We address this pressing question by estimating comparative health outcomes of key infection control strategies using a simulation model calibrated to data on homeless shelter outbreaks.

Methods

Microsimulation model

We developed an individual-level stochastic susceptible-exposed-infectious-recovered (SEIR) model [11] to simulate transmission of SARS-CoV-2 in a congregate shelter population (Supplementary Figure 1). The model defines individuals as susceptible, exposed, infectious, or immune to SARS-CoV-2 (Supplementary Table 1). We constructed the model to include important aspects of the natural history of COVID-19, including sub-clinical infection, pre-symptomatic transmission, and age-specific differences in risk of severe symptoms. In the model, susceptible individuals become infected with SARS-CoV-2 at a rate proportional to the prevalence of infectious individuals inside the shelter and their infectiousness (assuming homogeneous mixing), plus a static force of infection based on the background infection incidence in the community outside the shelter. Upon infection, individuals enter a latent infection stage in which they incubate the virus but are not infectious. They then progress to become infectious and contribute to ongoing transmission. An age-dependent fraction of infected individuals develop clinical symptoms with associated risk of hospitalization and death

(Supplementary Table 2), while the remainder have sub-clinical infection. Individuals who recover from infection are assumed to remain immune.

Data

The model was calibrated using aggregate data from PCR testing conducted during COVID-19 outbreaks in five shelters in three US cities – San Francisco (n=1), Boston (n=1) and Seattle (n=3) [4,6,7] – from March 28–April 10, 2020. We obtained de-identified individual-level data from the outbreak in the San Francisco shelter (see Supplementary Material and Supplementary Table 3 for details), which is fully described elsewhere [5]. As of April 10, 2020, a total of 89 individuals (84 residents, 5 staff) of 175 tested (130 residents, 45 staff) in the shelter were PCR-positive. We obtained aggregate data from the outbreaks in the Boston and Seattle shelters, where identified COVID-19 cases triggered mass testing events [4,6,7]. In the Boston shelter, 147 of 408 residents and 15 of 50 staff were PCR-positive during testing conducted April 2–3, 2020. The numbers of residents and staff tested and positive in the three Seattle shelters (shelters A, B and C) at two testing events conducted March 30–April 1 and April 7–8, 2020 are given in Supplementary Table 4.

Model calibration

We calibrated the model to the aggregate numbers of individuals PCR-positive out of those tested in each shelter (daily data for the San Francisco shelter, cross-sectional for the Seattle and Boston shelters) using approximate Bayesian computation techniques (see Supplementary Material). We fitted the following parameters: (i) the basic reproduction number R_0 (the average number of secondary infections generated by the average infectious individual in an entirely

susceptible shelter population), (ii) the number of latently infected individuals who initially entered the shelter E_0 , and (iii) the number of days before the first case was identified that these individuals entered the shelter D (Table 1). The remaining parameters were sourced from literature on natural history and epidemiology of SARS-CoV-2 (Table 1 and Supplementary Table 5).

Infection control strategies

We simulated six infection control strategies (Supplementary Table 6). 1) *Daily symptom-based screening*: daily screening of all individuals in the shelter involving a temperature and symptom survey. Individuals who screened positive were PCR tested, with 80% compliance, and isolated for 1 day pending the test result; if negative, they returned to the population. We used published data on the sensitivity of symptom-based screening with time since infection [12], which suggests that close to 100% of symptomatic cases (a subset of all true cases) would eventually be detected under repeated daily screening based on the definition of being symptomatic, even with low sensitivity of symptom screening on any one occasion (here assumed to be 40% to give a 98% probability of detection after 8 days of daily symptom screening). Despite reports of low specificity of symptom screening [13,14], a high specificity of 90% was assumed to prevent unrealistic levels of PCR testing and isolation of symptom-positive individuals awaiting test results. We assumed a minimum of 3 days between repeat PCR tests for the same individual based on typical clinical practice and test turnaround times. 2) *Routine PCR testing*: twice-weekly PCR testing of residents and staff based on prior literature analyzing reduction in transmission and cost-effectiveness under different testing frequencies [15–17]. We assumed 75% sensitivity and 100% specificity of PCR testing based on published literature [18–21], a

mean duration of detectable viral load (starting prior to development of symptoms) of 20 days (Supplementary Figure 3) [22–27], and 80% compliance with testing. We assumed test results were returned in 1 day, after which time individuals who tested PCR-positive were removed from the shelter population. 3) *Universal mask wearing*: wearing of surgical masks by all persons within the shelter. We assumed that surgical mask wearing reduced the amount of infectious SARS-CoV-2 material breathed into the air by infected individuals by 30% based on literature estimates from household studies assuming high compliance and recent experimental studies [28–33], and that 80% of individuals adhered to mask wearing [34–36]. 4) *Relocation of “high-risk” individuals*: moving high-risk individuals (defined as those ≥ 60 years and/or with co-morbidities) to single hotel rooms, modelled by replacing such individuals with lower-risk individuals. 5) *Routine PCR testing of staff only*: twice-weekly testing of staff only, assuming 80% compliance. 6) *Combination strategy*: strategies 1–4 combined. Daily symptom screening (strategy 1) was included in all strategies.

Prediction of impact of infection control strategies

For each intervention strategy we simulated transmission within a shelter of 250 residents and 50 staff (based on an average shelter size) over 30 days starting with one latently infected individual 1000 times (to account for stochastic uncertainty). The time period was chosen to capture the trajectory of an outbreak and differential benefits of strategies. The primary outcome was the probability of averting an outbreak (defined as 3 or more infections originating within the shelter in any 14-day period [37,38]) under each strategy, with secondary outcomes of the proportional reductions in the total numbers of COVID-19 infections and clinical cases, and total numbers of hospitalizations, deaths and PCR tests used. Only individuals who tested positive were removed

from the shelter population. The initial population was chosen to have the same composition in terms of proportions in different risk groups (by age and co-morbidity status) as the San Francisco shelter. We estimated the probability of averting an outbreak under each intervention strategy (compared with no interventions) for each calibrated R_0 value for a range of different background infection rates estimated from recent incidence of confirmed cases in Seattle, Boston and San Francisco (see Supplementary Material for details). To account for potential upward bias in the estimated R_0 range due to fitting to data from shelters with high attack rates, we performed the same simulations for a shelter environment with a low R_0 of 1.5. Analyzed data and model code are available at https://github.com/LloydChapman/COVID_homeless_modelling. This study was considered exempt non-human subject research based on use of de-identified secondary data by the University of California, San Francisco Institutional Review Board.

Sensitivity analysis

We conducted a multi-way sensitivity analysis to assess the impact of uncertainty in key natural history and intervention parameters (relative infectiousness of subclinical infection and the early infectious stage, sensitivities and specificities of symptom screening and PCR tests, testing and masking compliances, and mask effectiveness) on the results (Table 1). We explored the impact of PCR testing frequency on the probability of averting an outbreak by varying the testing frequency in strategy 2 from daily to monthly.

Results

Model calibration

The model reproduced the numbers of PCR-positive individuals in the cross-sectional surveys in the Seattle and Boston shelters (Supplementary Figure 4) and the observed numbers of PCR-positive individuals and symptomatic cases over time for the outbreak in the San Francisco shelter (Supplementary Figures 4 and 5). The estimated R_0 values ranged from 2.9 (95% CI 1.1–6.7) for Seattle shelter B to 6.2 (95% CI 4.0–7.9) for the San Francisco shelter (Supplementary Table 7), with corresponding estimated cumulative infection incidences at the end of the testing period of 14% (95% CI 1–41%) and 83% (95% CI 72–92%) (Supplementary Table 8). The median estimated number of infections initially introduced was 3 for all shelters (95% CI 1–5). The estimated date of introduction of infection ranged from 10 days (95% CI 7–14 days) before the first case was identified for Seattle shelter B to 21 days (95% CI 17–26 days) before for San Francisco.

Impact of infection control strategies

Table 2 shows the projected impact of the six infection control strategies considered, for different transmission environments. Daily symptom screening performed poorly across different transmissibilities (probability of averting an outbreak = 0.03 for San Francisco $R_0 = 6.2$, and probability = 0.33 for $R_0 = 1.5$). Relocating individuals at high-risk of clinical symptoms combined with symptom screening performed similarly to symptom screening alone (probability of averting an outbreak = 0.03–0.33 for $R_0 = 6.2$ –1.5). Twice-weekly PCR testing of staff provided some additional benefit over daily symptom screening at lower transmissibilities (probability of averting an outbreak = 0.03–0.40 for $R_0 = 6.2$ –1.5). Universal masking and twice-weekly PCR testing of all individuals yielded higher probabilities of averting an outbreak of 0.06–0.47 and 0.04–0.52 for $R_0 = 6.2$ –1.5. The combination strategy involving daily

symptom screening, twice-weekly PCR testing of all individuals, universal masking, and removal of high-risk individuals gave the highest probability of averting an outbreak (0.08–0.68 for $R_0 = 6.2$ –1.5).

The probability of averting an outbreak under each intervention strategy decreased with increasing transmission potential (R_0) inside the shelter and with increasing infection incidence in the community outside the shelter (Figure 1). Even under the combination strategy, the probability of averting an outbreak in an average-transmission-potential shelter ($R_0 = 2.9$) decreased from 0.58 to 0.07 as the background infection rate increased from 0 to 439 cases per 1 million person-days (the estimated background infection rate in San Francisco between June 27 and July 10, 2020).

The relative reduction in infection incidence under the different infection control strategies followed the same pattern as the probability of averting an outbreak (Supplementary Table 10 and Figure 2).

PCR test requirements were approximately three times higher (at an average of 6.6 tests per person per month) under twice-weekly PCR testing of all individuals than when only testing individuals identified as symptomatic in daily symptom screening (2.0 tests/person/month), and approximately two times higher than when only testing staff twice-a-week (2.8 tests/person/month) (Supplementary Table 11).

Sensitivity analysis

The probability of averting an outbreak was most sensitive to uncertainty in mask effectiveness and relative infectiousness of the early infectious stage, followed by PCR sensitivity and masking and testing compliances (Supplement Figure 9). Decreasing the frequency of PCR testing from daily to monthly decreased the probability of averting an outbreak for $R_0 = 1.5$, 2.9 and 3.9 from 0.70 to 0.35, 0.27 to 0.12, and 0.23 to 0.08 respectively, but had little impact on the already low probability of averting an outbreak for $R_0 = 6.2$ (Figure 3).

Discussion

Several outbreaks of COVID-19 with high attack rates have occurred in homeless shelters across the US, and there remains uncertainty over the best infection control strategies to reduce outbreak risk in shelters. In this study, we applied a simulation analysis to identify infection control strategies to prevent future outbreaks. We found that in high-risk shelters that are unable to maximize basic infection control practices that sufficiently reduce the transmissibility of SARS-CoV-2 (e.g. social distancing, reduced living density), no additional infection control strategy is likely to prevent outbreaks. In contrast, in lower-risk shelters with low background community incidence, the implementation of strategies such as symptom screening, routine PCR testing, and masking would help reduce outbreak risk.

We found a wide range of transmissibility of SARS-CoV-2 based on observed outbreaks in homeless shelters, which greatly affects intervention impact. Basic reproduction number (R_0) estimates ranged from 2.9 to 6.2, which is at the high end of estimates in the literature [39–42]. This likely reflects a high degree of heterogeneity in infectiousness between individuals [41,43–46] and a highly conducive environment for transmission within these shelters due to lack of

existing infection control practices and high living density. Our R_0 estimates are also likely not entirely representative of general transmission potential in shelters as non-outbreaks and smaller outbreaks may go undetected or unreported, and some shelters have reported only low numbers of infections [4,47]. For these R_0 values and current background infection rates, we found that the infection control strategies considered are unlikely to prevent outbreaks (probability < 40%), even when combined. Nevertheless, they do reduce incidence of infection and clinical disease and slow the growth of the outbreak (Figure 2).

In a lower transmissibility setting, with $R_0 = 1.5$, e.g. where staff and clients are able to socially distance, the considered intervention strategies are more likely to prevent outbreaks (probability up to nearly 70% under combined interventions, for a moderate background infection rate equivalent to that in Boston in early July of 122/1,000,000/day).

A key remaining issue is identifying the characteristics that distinguish low-risk shelters that can be safely operated with implementation of infection control strategies. Data is limited, but available evidence suggests that social distancing and reductions in super-spreading are likely to be key factors [41,43,48–50]. Strategies that may achieve these goals include reducing living density, spacing bedding, reducing communal activities, and adopting staffing models that limit social contacts.

The fact that intervention impact and the probability of averting an outbreak decrease significantly with increasing background infection rate in the community (Figure 1) suggests a need for alternative housing arrangements for people experiencing homelessness in locations in

which community incidence is moderate to high – 100–500 infections/1,000,000/day, equivalent to 25–125 confirmed cases/1,000,000/day (i.e. current San Francisco incidence) assuming four-fold underreporting (see Supplementary Material). In lower background incidence settings, combined daily symptom-based screening, twice-weekly PCR testing, universal masking and relocation of high-risk individuals to non-congregate settings would reduce outbreak risk, and limit incidence of infection and severe disease if outbreaks do occur.

Each infection control strategy is limited in some aspect [22,51–55]. Symptom-based screening has very low sensitivity to detect infections early in the clinical course (when people are most infectious), and poor specificity [12–14,56]. The impact of routine PCR testing is limited by imperfect PCR sensitivity (~75%), especially early in the infection course [19], as well as need for frequent testing and missing onset of infectiousness between testing periods. Other analyses support our finding that testing less than once or twice weekly leaves a high risk of outbreaks (e.g. testing once every two weeks gives a 30% lower probability of averting an outbreak than twice-weekly testing, Figure 3) [15–17]. However, once- or twice-weekly testing may be financially and logistically infeasible. Similarly, relocation of high-risk persons to independent housing is resource intensive. Frequent testing and universal masking also suffer issues with adherence, which constrains their effectiveness.

This study has a number of limitations. Due to limited data availability, we only calibrated the model to a small number of shelter outbreaks, the R_0 estimates for which are likely to be higher than for the average shelter due to larger outbreaks being more likely to be reported. The cross-sectional aggregate nature of the majority of the data also led to wide uncertainty intervals

around the fitted parameters, without independent identifiability between them (Supplementary Figure 10). Our estimate of the impact of masking is highly sensitive to the assumed effectiveness of masking, which has mixed evidence [28,29,31]. Many uncertainties in the biology of SARS-CoV-2 transmission remain, particularly regarding differential infectiousness over time and by severity of illness, and the relationship of PCR positivity and infectiousness, for which we had to make assumptions based on currently available evidence (see Supplementary Material) [22,57,58].

This study defines conditions that would support safely operating homeless shelters with lower risk of COVID-19 outbreaks and estimates the impact of various interventions on outbreak risk. Our findings demonstrate the need for combined interventions (symptom-based screening, PCR testing, and masking) and regular testing to protect persons experiencing homelessness from COVID-19, while highlighting the limitations of these interventions in preventing outbreaks.

Funding:

This work was supported by the University of California, San Francisco and the UCSF Benioff Homelessness and Housing Initiative.

Acknowledgements:

We sincerely appreciate the hard work and public health efforts of all those involved in the collection of the data used in this article. LACC would like to thank Renata Retkute, Amanda Minter, Simon Spencer and TJ McKinley for helpful discussions regarding Approximate Bayesian Computation.

Disclosures:

The authors declare no conflicts of interest or disclosures. NCL has received funding from the World Health Organization for unrelated work.

Author Contributions:

Conceptualization: NCL, LACC

Data Curation: LACC, SNC, AS, CC, TN, EI

Formal Analysis: LACC, NCL

Funding Acquisition: NCL, MK

Investigation: LACC, NCL

Methodology: LACC, NCL

Project Administration: NCL

Resources: NCL

Software: LACC

Supervision: NCL, MK

Visualization: LACC, NCL

Writing – Original Draft Preparation: LACC, NCL

Writing – Review & Editing: All authors

Drs. Lloyd A.C. Chapman and Nathan C. Lo had full access to all of the data in the study and take responsibility for the integrity of the data and the accuracy of the data analysis.

References

1. Henry M, Watt R, Mahathey A, et al. The 2019 Annual Homeless Assessment Report (AHAR) to Congress. Washington, DC: 2020.
2. Perri M, Dosani N, Hwang SW. COVID-19 and people experiencing homelessness: challenges and mitigation strategies. *CMAJ* **2020**; 192:E716–E719.
3. Culhane D, Treglia D, Steif K, Kuhn R, Byrne T. Estimated Emergency and Observational/Quarantine Capacity Need for the US Homeless Population Related to COVID-19 Exposure by County; Projected Hospitalizations, Intensive Care Units and Mortality. 2020. Available at: https://works.bepress.com/dennis_culhane/237/.
4. Mosites E, Parker EM, N Clarke KE, et al. Assessment of SARS-CoV-2 Infection Prevalence in Homeless Shelters — Four U.S. Cities, March 27–April 15, 2020. **2019**; 69. Available at: <https://www.medrxiv.org/content/10.1101/2020.04.12.20059618v1>.
5. Imbert E, Kinley PM, Scarborough A, et al. Coronavirus Disease 2019 (COVID-19) Outbreak in a San Francisco Homeless Shelter. *Clin Infect Dis* **2020**; Available at: <https://academic.oup.com/cid/advance-article/doi/10.1093/cid/ciaa1071/5879965>. Accessed 21 August 2020.
6. Baggett TP, Keyes H, Sporn N, Gaeta JM. Prevalence of SARS-CoV-2 Infection in Residents of a Large Homeless Shelter in Boston. *JAMA - J Am Med Assoc* **2020**; 323:2191–2192.
7. Tobolowsky FA, Gonzales E. COVID-19 Outbreak Among Three Affiliated Homeless Service Sites — King County, Washington, 2020. *Morb Mortal Wkly Rep* **2020**; 69:523–526.
8. World Health Organization. Transmission of SARS-CoV-2: implications for infection prevention precautions. 2020. Available at: <https://www.who.int/publications/i/item/modes-of-transmission-of-virus-causing-covid-19-implications-for-ipc-precaution-recommendations>. Accessed 11 August 2020.
9. Centers for Disease Control. Interim Considerations for Health Departments for SARS-CoV-2 Testing in Homeless Shelters and Encampments. 2020. Available at: <https://www.cdc.gov/coronavirus/2019-ncov/community/homeless-shelters/testing.html>. Accessed 11 August 2020.
10. Centers for Disease Control. Investigating and responding to COVID-19 cases at homeless service provider sites. 2020. Available at: <https://www.cdc.gov/coronavirus/2019-ncov/php/investigating-cases-homeless-shelters.html>. Accessed 11 August 2020.
11. Bertozzi AL, Franco E, Mohler G, Short MB, Sledge D. The challenges of modeling and forecasting the spread of COVID-19. *Proc Natl Acad Sci* **2020**; :202006520.
12. Gostic KM, Gomez ACR, Mummah RO, Kucharski AJ, Lloyd-Smith JO. Estimated effectiveness of symptom and risk screening to prevent the spread of COVID-19. *Elife* **2020**; 9:1–18.
13. Roxby AC, Greninger AL, Hatfield KM, et al. Outbreak Investigation of COVID-19 among Residents and Staff of an Independent and Assisted Living Community for Older Adults in Seattle, Washington. *JAMA Intern Med* **2020**; 98104.
14. Kimball A, Hatfield KM, Arons M, et al. Asymptomatic and Presymptomatic SARS-CoV-2 Infections in Residents of a Long-Term Care Skilled Nursing Facility — King County, Washington, March 2020. *Morb Mortal Wkly Rep* **2020**; 69:377–381.
15. Larremore DB, Wilder B, Lester E, et al. Test sensitivity is secondary to frequency and turnaround time for COVID-19 surveillance. *medRxiv* **2020**; :2020.06.22.20136309.

- Available at:
<https://www.medrxiv.org/content/10.1101/2020.06.22.20136309v2%0Ahttps://www.medrxiv.org/content/10.1101/2020.06.22.20136309v2.abstract>.
16. Paltiel AD, Zheng A, Walensky RP. Assessment of SARS-CoV-2 Screening Strategies to Permit the Safe Reopening of College Campuses in the United States. *JAMA Netw Open* **2020**; 3:e2016818. Available at: <http://www.ncbi.nlm.nih.gov/pubmed/32735339>.
17. Chin ET, Huynh BQ, Murrill M, Basu S, Lo NC. Frequency of routine testing for COVID-19 in high-risk environments to reduce workplace outbreaks. *medRxiv* **2020**; :2020.04.30.20087015. Available at: <http://medrxiv.org/content/early/2020/06/22/2020.04.30.20087015.abstract>.
18. Arevalo-Rodriguez I, Buitrago-Garcia D, Simancas-Racines D, et al. False-Negative Results of Initial RT-PCR Assays for Covid-19: a Systematic Review. **2020**; :1–26.
19. Kucirka LM, Lauer SA, Laeyendecker O, Boon D, Lessler J. Variation in False-Negative Rate of Reverse Transcriptase Polymerase Chain Reaction–Based SARS-CoV-2 Tests by Time Since Exposure. *Ann Intern Med* **2020**;
20. Watson J, Whiting PF, Brush JE. Interpreting a covid-19 test result. *BMJ* **2020**; 369:1–7. Available at: <http://dx.doi.org/doi:10.1136/bmj.m1808>.
21. Padhye NS. Reconstructed diagnostic sensitivity and specificity of the RT-PCR test for COVID-19. *medRxiv* **2020**; 19:2020.04.24.20078949. Available at: <http://medrxiv.org/lookup/doi/10.1101/2020.04.24.20078949>.
22. He X, Lau EHY, Wu P, et al. Temporal dynamics in viral shedding and transmissibility of COVID-19. *Nat Med* **2020**; 26:672–675.
23. Wölfel R, Corman VM, Guggemos W, et al. Virological assessment of hospitalized patients with COVID-2019. *Nature* **2020**; 581:465–469.
24. To KKW, Tsang OTY, Leung WS, et al. Temporal profiles of viral load in posterior oropharyngeal saliva samples and serum antibody responses during infection by SARS-CoV-2: an observational cohort study. *Lancet Infect Dis* **2020**; 20:565–574. Available at: [http://dx.doi.org/10.1016/S1473-3099\(20\)30196-1](http://dx.doi.org/10.1016/S1473-3099(20)30196-1).
25. Zhou F, Yu T, Du R, et al. Clinical course and risk factors for mortality of adult inpatients with COVID-19 in Wuhan, China: a retrospective cohort study. *Lancet* **2020**; 395:1054–1062. Available at: [http://dx.doi.org/10.1016/S0140-6736\(20\)30566-3](http://dx.doi.org/10.1016/S0140-6736(20)30566-3).
26. Xiao AT, Tong YX, Gao C, Zhu L, Zhang YJ, Zhang S. Dynamic profile of RT-PCR findings from 301 COVID-19 patients in Wuhan, China: A descriptive study. *J Clin Virol* **2020**; 127:0–6.
27. Zou L, Ruan F, Huang M, et al. SARS-CoV-2 viral load in upper respiratory specimens of infected patients. *N Engl J Med* **2020**; 382:1177–1179.
28. Leung NHL, Chu DKW, Shiu EYC, et al. Respiratory virus shedding in exhaled breath and efficacy of face masks. *Nat Med* **2020**; 26:676–680. Available at: <http://dx.doi.org/10.1038/s41591-020-0843-2>.
29. MacIntyre CR, Chughtai AA. Facemasks for the prevention of infection in healthcare and community settings. *BMJ* **2015**; 350:1–12.
30. MacIntyre CR, Chughtai AA. A rapid systematic review of the efficacy of face masks and respirators against coronaviruses and other respiratory transmissible viruses for the community, healthcare workers and sick patients. *Int J Nurs Stud* **2020**; 108:0–5.
31. Brainard JS, Jones N, Lake I, Hooper L, Hunter P. Facemasks and similar barriers to prevent respiratory illness such as COVID-19: A rapid systematic review. **2020**;

32. Chan JF-WW, Yuan S, Zhang AJ, et al. Surgical mask partition reduces the risk of non-contact transmission in a golden Syrian hamster model for Coronavirus Disease 2019 (COVID-19). *Clin Infect Dis* **2020**; Available at: <https://academic.oup.com/cid/advance-article/doi/10.1093/cid/ciaa644/5848814>. Accessed 11 August 2020.
33. Mueller A, Eden M, Oakes J, Bellini C, Fernandez L. Quantitative Method for Comparative Assessment of Particle Removal Efficiency of Fabric Masks as Alternatives to Standard Surgical Masks for PPE. *Matter* **2020**; Available at: <https://doi.org/10.1016/j.matt.2020.07.006>.
34. Axios, Ipsos. Axios/Ipsos Poll Wave 14. **2020**; Available at: <https://www.ipsos.com/en-us/news-polls/axios-ipsos-coronavirus-index>.
35. Betsch C, Korn L, Sprengholz P, et al. Social and behavioral consequences of mask policies during the COVID-19 pandemic. *Proc Natl Acad Sci U S A* **2020**; 117:21851–21853.
36. Haischer MH, Beilfuss R, Rose Hart M, et al. Who is wearing a mask? Gender-, age-, and location-related differences during the COVID-19 pandemic. *medRxiv* **2020**; :2020.07.13.20152736. Available at: <https://doi.org/10.1101/2020.07.13.20152736>.
37. Managing Investigations During an Outbreak | CDC. Available at: <https://www.cdc.gov/coronavirus/2019-ncov/php/contact-tracing/contact-tracing-plan/outbreaks.html>. Accessed 11 August 2020.
38. Patel M, Lee AD, Clemmons NS, et al. National Update on Measles Cases and Outbreaks — United States, January 1–October 1, 2019. Available at: <https://www.who.int/immunization/policy/>.
39. Liu Y, Gayle AA, Wilder-Smith A, Rocklöv J. The reproductive number of COVID-19 is higher compared to SARS coronavirus. *J Travel Med* **2020**; 27:1–4.
40. Davies NG, Kucharski AJ, Eggo RM, et al. Effects of non-pharmaceutical interventions on COVID-19 cases, deaths, and demand for hospital services in the UK: a modelling study. *Lancet Public Heal* **2020**; :e375–e385.
41. Endo A, Abbott S, Kucharski AJ, Funk S. Estimating the overdispersion in COVID-19 transmission using outbreak sizes outside China. **2020**; :1–13.
42. MIDAS Network. COVID-19 parameter estimates. Available at: https://github.com/midas-network/COVID-19/tree/master/parameter_estimates/2019_novel_coronavirus. Accessed 11 August 2020.
43. Lau MS, Grenfell B, Nelson K, Lopman B. Characterizing super-spreading events and age-specific infectivity of COVID-19 transmission in Georgia, USA. *medRxiv* **2020**; :2020.06.20.20130476. Available at: <https://www.medrxiv.org/content/10.1101/2020.06.20.20130476v2%0Ahttps://www.medrxiv.org/content/10.1101/2020.06.20.20130476v2.abstract>.
44. Szablewski CM, Chang KT, Brown MM, et al. SARS-CoV-2 Transmission and Infection Among Attendees of an Overnight Camp - Georgia, June 2020. *Morb Mortal Wkly Rep* **2020**; 69:1023–1025. Available at: <http://www.ncbi.nlm.nih.gov/pubmed/32759921>.
45. James A, Eagle L, Phillips C, et al. High COVID-19 Attack Rate Among Attendees at Events at a Church — Arkansas, March 2020. *Morb Mortal Wkly Rep* **2020**; 69:632–635.
46. County S, Hamner L, Dubbel P, et al. High SARS-CoV-2 Attack Rate Following Exposure at a Choir Practice. *Morb Mortal Wkly Rep* **2020**; 69:606–610. Available at: <https://www.cdc.gov/mmwr/volumes/69/wr/mm6919e6.htm>.
47. City of San Diego. Operation Shelter to Home. 2020. Available at:

- 506 <https://www.sandiego.gov/coronavirus/sheltermtohome>. Accessed 21 August 2020.
- 507 48. Courtemanche C, Garuccio J, Le A, Pinkston J, Yelowitz A. Strong Social Distancing
508 Measures In The United States Reduced The COVID-19 Growth Rate. *Health Aff* **2020**;
509 39:1237–1246.
- 510 49. Prem K, Liu Y, Russell TW, et al. The effect of control strategies to reduce social mixing
511 on outcomes of the COVID-19 epidemic in Wuhan, China: a modelling study. *Lancet*
512 *Public Heal* **2020**; 5:e261–e270.
- 513 50. Jarvis CI, Van Zandvoort K, Gimma A, et al. Quantifying the impact of physical distance
514 measures on the transmission of COVID-19 in the UK. *BMC Med* **2020**; 18:1–10.
- 515 51. Furukawa NW, Furukawa NW, Brooks JT, Sobel J. Evidence Supporting Transmission of
516 Severe Acute Respiratory Syndrome Coronavirus 2 while Presymptomatic or
517 Asymptomatic. *Emerg Infect Dis* **2020**; 26:E1–E6.
- 518 52. Arons MM, Hatfield KM, Reddy SC, et al. Presymptomatic SARS-CoV-2 infections and
519 transmission in a skilled nursing facility. *N Engl J Med* **2020**; 382:2081–2090.
- 520 53. Tindale LC, Stockdale JE, Coombe M, et al. Evidence for transmission of COVID-19
521 prior to symptom onset. *Elife* **2020**; 9:1–34.
- 522 54. Casey M, Griffin J, McAloon CG, et al. Estimating pre-symptomatic transmission of
523 COVID-19: a secondary analysis using published data. *medRxiv* **2020**;
524 :2020.05.08.20094870. Available at:
525 <http://medrxiv.org/lookup/doi/10.1101/2020.05.08.20094870>.
- 526 55. Li R, Pei S, Chen B, et al. Substantial undocumented infection facilitates the rapid
527 dissemination of novel coronavirus (SARS-CoV-2). *Science* (80-) **2020**; 368:489–493.
- 528 56. Arima Y, Kutsuna S, Shimada T, et al. Severe Acute Respiratory Syndrome Coronavirus 2
529 Infection among Returnees to Japan from Wuhan, China, 2020. *Emerg Infect Dis* **2020**;
530 26:1596–1600. Available at: <https://doi.org/10.1056/NEJMc2001899>. Accessed 11 August
531 2020.
- 532 57. Bullard J, Dust K, Funk D, et al. Predicting infectious SARS-CoV-2 from diagnostic
533 samples. *Clin Infect Dis* **2020**; Available at: [https://academic.oup.com/cid/advance-](https://academic.oup.com/cid/advance-article/doi/10.1093/cid/ciaa638/5842165)
534 [article/doi/10.1093/cid/ciaa638/5842165](https://academic.oup.com/cid/advance-article/doi/10.1093/cid/ciaa638/5842165). Accessed 11 August 2020.
- 535 58. Long QX, Tang XJ, Shi QL, et al. Clinical and immunological assessment of
536 asymptomatic SARS-CoV-2 infections. *Nat Med* **2020**;
- 537 59. Chang D, Mo G, Yuan X, et al. Time Kinetics of Viral Clearance and Resolution of
538 Symptoms in Novel Coronavirus Infection. *Am J Respir Crit Care Med* **2020**; 201:1150–
539 1152.
- 540 60. Chen Y, Wang A, Yi B, et al. Epidemiological characteristics of infection in COVID-19
541 close contacts in Ningbo city. *Chinese J Epidemiol* **2020**; 41:667–671.
- 542 61. Davies NG, Klepac P, Liu Y, Prem K, Jit M, Eggo RM. Age-dependent effects in the
543 transmission and control of COVID-19 epidemics. *medRxiv* **2020**;
- 544 62. King County Department of Public Health. Daily COVID-19 outbreak summary - King
545 County. 2020. Available at: [https://www.kingcounty.gov/depts/health/covid-19/data/daily-](https://www.kingcounty.gov/depts/health/covid-19/data/daily-summary.aspx)
546 [summary.aspx](https://www.kingcounty.gov/depts/health/covid-19/data/daily-summary.aspx). Accessed 13 August 2020.
- 547 63. City of Boston. COVID-19 Case Tracker. 2020. Available at:
548 [https://dashboard.cityofboston.gov/t/Guest_Access_Enabled/views/COVID-](https://dashboard.cityofboston.gov/t/Guest_Access_Enabled/views/COVID-19/Dashboard1?showAppBanner=false&:display_count=n&:showVizHome=n&:origin=viz_share_link&:isGuestRedirectFromVizportal=y&:embed=y)
549 [19/Dashboard1?showAppBanner=false&:display_count=n&:showVizHome=n&:origin=](https://dashboard.cityofboston.gov/t/Guest_Access_Enabled/views/COVID-19/Dashboard1?showAppBanner=false&:display_count=n&:showVizHome=n&:origin=viz_share_link&:isGuestRedirectFromVizportal=y&:embed=y)
550 [viz_share_link&:isGuestRedirectFromVizportal=y&:embed=y](https://dashboard.cityofboston.gov/t/Guest_Access_Enabled/views/COVID-19/Dashboard1?showAppBanner=false&:display_count=n&:showVizHome=n&:origin=viz_share_link&:isGuestRedirectFromVizportal=y&:embed=y). Accessed 13 August 2020.
- 551 64. San Francisco Department of Public Health. COVID-19 Cases Summarized by Date,

552 Transmission and Case Disposition - City and County of San Francisco. 2020. Available
553 at: [https://data.sfgov.org/COVID-19/COVID-19-Cases-Summarized-by-Date-](https://data.sfgov.org/COVID-19/COVID-19-Cases-Summarized-by-Date-Transmission-and/tvq9-ec9w)
554 Transmission-and/tvq9-ec9w. Accessed 13 August 2020.
555
556

Tables and Figures

Table 1. Microsimulation input parameters based on observed outbreak data from homeless shelters in Seattle, Boston and San Francisco

Parameter	Base case value	Range in sensitivity analysis*	References
<i>Natural history</i>			
Mean duration of latent infection period, days	3	-	[22]
Mean duration of early infectious stage (subclinical/clinical), days	2.3	-	[22]
Mean duration of late infectious stage (subclinical/clinical), days	8	-	[22,23,57,59]
Relative infectiousness of subclinical infection to clinical infection	1	0.5–1	[55,58,60]
Relative infectiousness of early infectious stage to late infectious stage	2	1–3	[22,54]
Probability of developing clinical symptoms	Age-dependent (see Supplementary Table 2)	-	[61]
Background infection rate in community outside shelter, infections/1,000,000 person-days	Shelter-specific (see Supplementary Material)	0–439	[62–64]
Basic reproduction number, R_0	Variable	1.5–6.2	Estimated
<i>Intervention</i>			
Symptom screening			
Sensitivity	0.4	0.3–0.5	Assumed based on [12]
Specificity	0.9	0.8–0.9	Assumed
Compliance of symptomatic individuals with PCR testing, %	80	50–100	Assumed
PCR testing			
Sensitivity	0.75	0.6–0.9	[18–21]
Specificity	1	0.95–1	[19,21]
Frequency	Twice weekly	Daily–Monthly	[15–17]
Compliance, %	80	50–100	Assumed
Masks			
Effectiveness (reduction in transmission)	30	10–50	[28–33]
Compliance, %	80	50–100	Assumed

* In the sensitivity analysis, each intervention strategy was simulated with all combinations of the minimum and maximum values of the ranges for the indicated parameters to generate the uncertainty intervals around the probability of averting an outbreak in Table 2.

See Supplementary Table 5 for complete list of all parameters used in model calibration and intervention

565 simulations.
566

Table 2. Probability of averting an outbreak* over a 30-day period in a generalized homeless shelter† with simulated infection control strategies

Infection control strategy‡	Probability of averting an outbreak (UI)§			
	$R_0 = 1.5$ (low-risk)	$R_0 = 2.9$ (Seattle)	$R_0 = 3.9$ (Boston)	$R_0 = 6.2$ (San Francisco)
1) Symptom screening	0.33 (0.22–0.61)	0.11 (0.07–0.35)	0.07 (0.03–0.24)	0.03 (0.01–0.13)
2) Routine twice-weekly PCR testing	0.52 (0.38–0.81)	0.27 (0.14–0.56)	0.18 (0.08–0.42)	0.04 (0.02–0.26)
3) Universal mask wearing	0.47 (0.24–0.88)	0.20 (0.08–0.64)	0.11 (0.04–0.52)	0.06 (0.01–0.32)
4) Relocation of high-risk individuals	0.33 (0.22–0.63)	0.10 (0.07–0.35)	0.06 (0.04–0.24)	0.03 (0.01–0.13)
5) Routine twice-weekly PCR testing of staff only	0.40 (0.29–0.69)	0.16 (0.08–0.36)	0.10 (0.04–0.26)	0.03 (0.01–0.13)
6) Combination strategy	0.68 (0.44–0.95)	0.40 (0.16–0.83)	0.28 (0.09–0.73)	0.08 (0.03–0.53)

UI = uncertainty interval; R_0 = basic reproduction number.

* Outbreak defined as ≥ 3 infections originating within the shelter in any 14-day period.

† Generalized homeless shelter defined as 250 residents and 50 staff with a background infection rate estimated from recent data (~120/1,000,000 person-days).

‡ All strategies included daily symptom screening.

§ UI generated from parameter sensitivity analysis (see text and Table 1).

See Supplementary Table 9 and Figure 1 for results for other background infection rates, and Supplementary Table 10 for reductions in infections and symptomatic cases. See Supplementary Figures 6–8 for the outbreak size distributions for the different R_0 values.

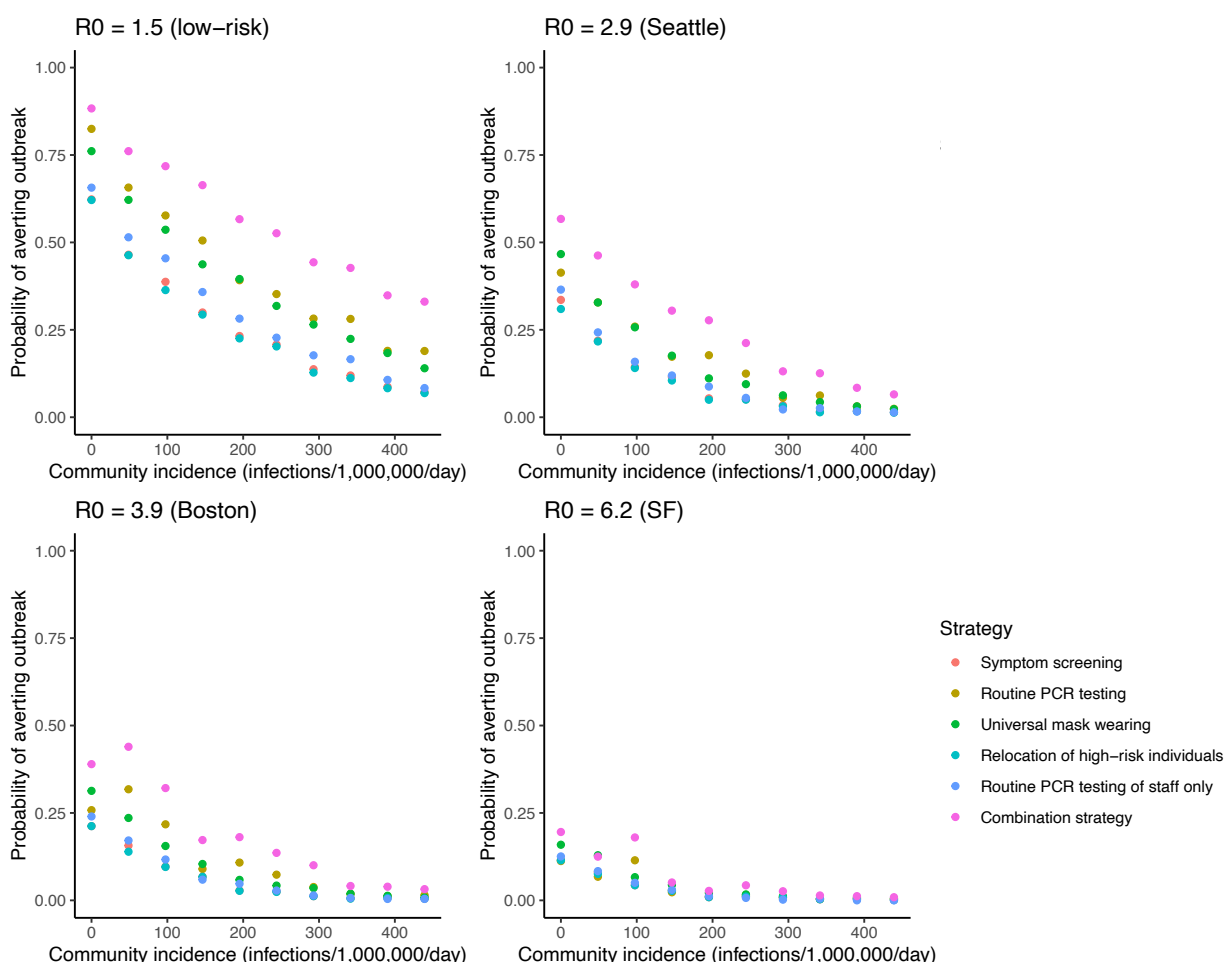


Figure 1. Impact of incidence of infection in the community on the probability of averting an outbreak in a generalized homeless shelter under different intervention strategies for different R_0 values. The probability of averting an outbreak (≥ 3 infections over any 14-day period) in a generalized homeless shelter of 250 residents and 50 staff over 30 days was estimated for different infection incidences in the community using the microsimulation model described in the text. SF = San Francisco.

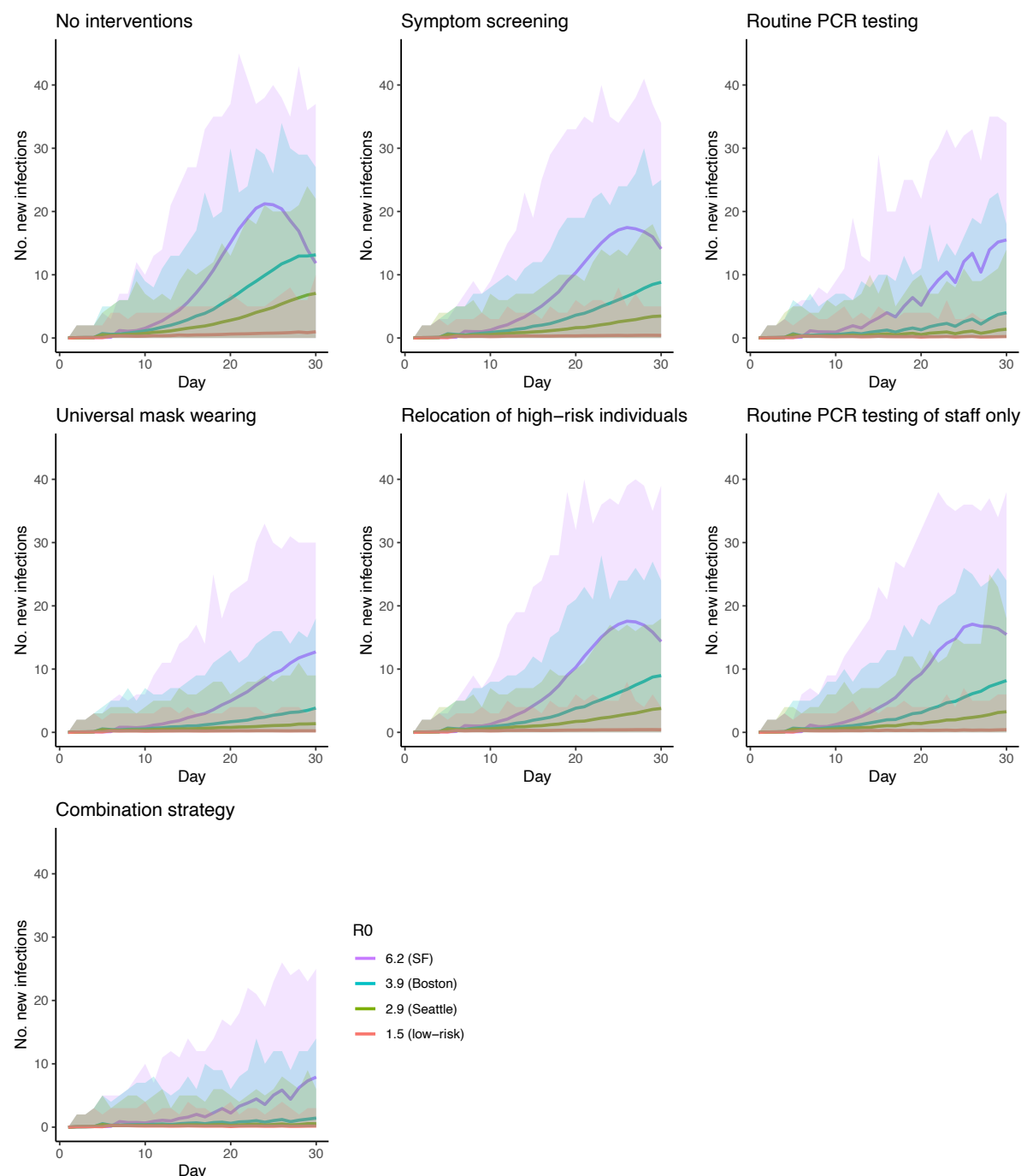


Figure 2. Predicted number of COVID-19 infections over a 30-day period in a generalized homeless shelter under different infection control strategies for different R_0 values. Solid lines show mean daily numbers of new infections and shaded areas show minimum and maximum daily numbers over 1000 simulations. Background infection rate in the community outside the shelter of approximately 120 infections/1,000,000 person-days. SF = San Francisco.

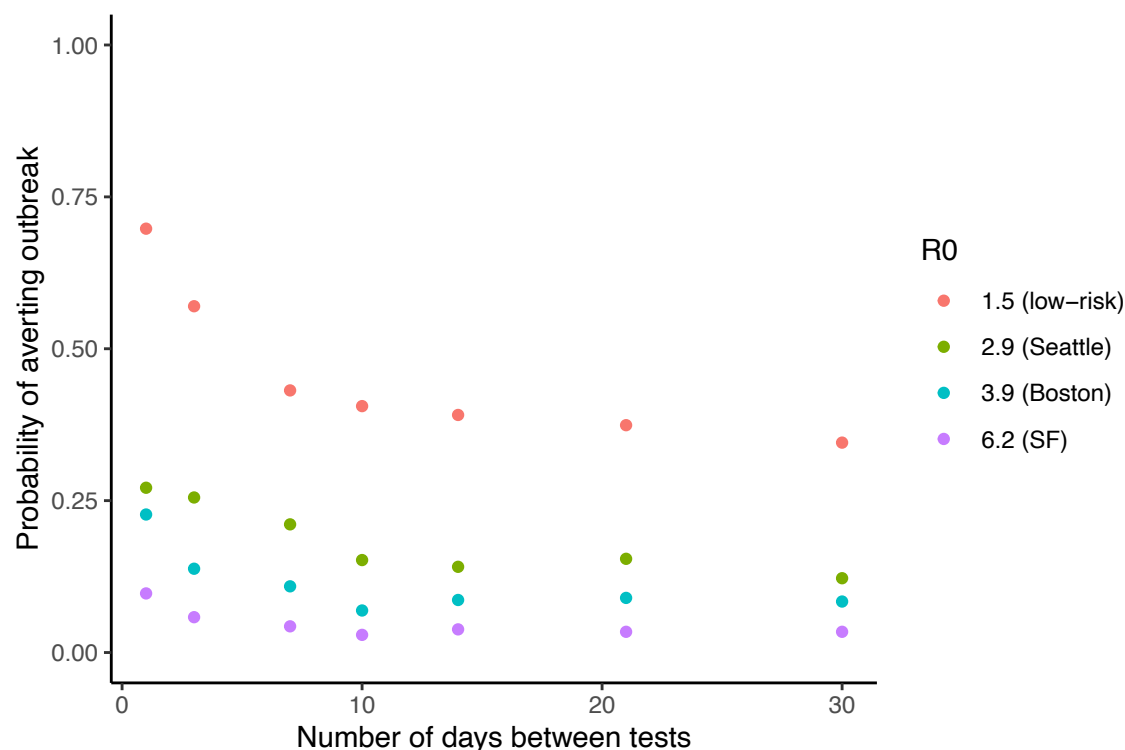


Figure 3. Impact of varying the frequency of routine PCR testing of residents and staff on the probability of averting an outbreak in a generalized homeless shelter for different R_0 values. The probability of averting an outbreak (≥ 3 infections over any 14-day period) over 30 days was estimated for different frequencies of routine PCR testing from daily (1 day between tests) to monthly (30 days between tests). Background infection rate in the local community of approximately 120 infections/1,000,000 person-days. SF = San Francisco.