

1 **Improved symptoms following bumetanide treatment in**
2 **children aged 3 to 6 years with autism spectrum disorder:**
3 **a randomized, double-blind, placebo-controlled trial**

4
5 **Yuan Dai¹⁺, MD; Lingli Zhang¹⁺, MD; Juehua Yu^{1,2+}, PhD; Xin Zhou³, MD; Hua He¹,**
6 **MD; Yiting Ji¹, MD; Kai Wang¹, MD; Xiujuan Du¹, MD; Xin Liu¹, MD; Yun Tang^{1,4},**
7 **PhD; Shining Deng¹, PhD; Christelle Langley⁵, PhD; Wei-Guang Li⁶, PhD; Jun Zhang¹,**
8 **PhD; Jianfeng Feng⁷, PhD; Barbara J Sahakian^{1,5,7}, PhD, DSc; Qiang Luo^{7,8*}, PhD; Fei**
9 **Li^{1*}, MD.**

10

11 ¹Department of Developmental and Behavioural Pediatric & Child Primary Care, Brain and
12 Behavioural Research Unit of Shanghai Institute for Pediatric Research and MOE-Shanghai
13 Key Laboratory for Children's Environmental Health, Xinhua Hospital, Shanghai Jiao Tong
14 University School of Medicine, Shanghai, China

15 ²Centre for Experimental Studies and Research, The First Affiliated Hospital of Kunming
16 Medical University, Kunming, China.

17 ³Clinical Research Unit, Xinhua Hospital, Shanghai Jiao Tong University School of Medicine,
18 Shanghai, China

19 ⁴The School of Psychology and Cognitive Science, East China Normal University, Shanghai,
20 China

21 ⁵Department of Psychiatry and the Behavioural and Clinical Neuroscience Institute,
22 University of Cambridge, Cambridge, UK

23 ⁶Collaborative Innovation Center for Brain Science, Department of Anatomy and Physiology,
24 Shanghai Jiao Tong University School of Medicine, Shanghai, China

25 ⁷MOE-Key Laboratory of Computational Neuroscience and Brain-Inspired Intelligence,
26 Institute of Science and Technology for Brain-Inspired Intelligence, Fudan University,
27 Shanghai, China

28 ⁸State Key Laboratory of Medical Neurobiology and MOE Frontiers Center for Brain Science,
29 Institutes of Brain Science and Human Phenom Institute, Fudan University, Shanghai, China

30

31 +These authors contributed equally to this work

32

33 *Correspondence:

34 Dr. F Li, Department of Developmental and Behavioural Pediatric & Child Primary Care,
35 Brain and Behavioural Research Unit of Shanghai Institute for Pediatric Research and MOE-
36 Shanghai Key Laboratory for Children's Environmental Health, Xinhua Hospital, Shanghai
37 Jiao Tong University School of Medicine, Shanghai 200092, China. Email:
38 feili@shsmu.edu.cn

39 Dr. Q Luo, Institute of Science and Technology for Brain-Inspired Intelligence, Fudan
40 University, Shanghai 200433, China. Email: qluo@fudan.edu.cn

41 **Abstract**

42 With the drug therapy for the core symptoms of autism spectrum disorder (ASD) currently
43 limited, here we reported a randomised, double-blind, placebo-controlled trial to investigate
44 the efficacy, safety, and potential neural mechanism of bumetanide in children with ASD
45 aged 3 to 6 years old. There were 120 children entered into the study and randomly assigned
46 to either 0.5mg bumetanide or placebo. In the final sample, 119 received at least one dose of
47 bumetanide (59 children) or placebo (60 children). The primary outcome was the score
48 reduction of Childhood Autism Rating Scale (CARS) and the secondary outcomes were the
49 score of Clinical Global Impressions Scale (CGI) -Global Improvement (CGI-I) at 3 months
50 and the change from baseline to 3-month in Autism Diagnostic Observation Schedule
51 (ADOS). Magnetic resonance spectroscopy (MRS) was used to measure γ -aminobutyric acid
52 (GABA) and glutamate neurotransmitter concentrations in the insular cortex (IC) before and
53 after the treatment. As compared with the placebo, bumetanide treatment was significantly
54 better in reducing severity. No patient withdrew from the trial due to adverse events. The
55 superiority of bumetanide to placebo in reducing insular GABA, measured using MRS, was
56 demonstrated. The clinical improvement was associated with the decrease in insular GABA
57 in the bumetanide group. In conclusion, this trial in a large group of young children with
58 predominantly moderate and severe ASD demonstrated that bumetanide is safe and effective
59 in improving the core symptoms of ASD. However, the clinical significance remains
60 uncertain and future multi-center clinical trials are required to replicate these findings and
61 confirm the clinical significance using a variety of outcome measures.

62

63 Key words: Autism spectrum disorder, children, RCT, bumetanide, GABA

64 **Introduction**

65 Autism spectrum disorder (ASD) is an early-onset neurodevelopmental disorder and often
66 leads to a life-time disability, and currently has no cure and no U.S. Food and Drug
67 Administration (FDA)-approved medication to effectively treat its core symptoms including
68 social communication and social interaction as well as restricted, repetitive patterns of
69 behaviour ^[1-3]. Behavioural interventions in early childhood are most effective and
70 recommended ^[4,5]. However, behaviour therapy services are not widely available for early
71 childhood intervention in many countries ^[6,7].

72

73 Bumetanide, an FDA-approved potent loop diuretic, has been proposed as a promising drug
74 candidate for ASD treatment. In previous studies the use of bumetanide was shown to
75 improve the symptoms including social communication, interaction, and restricted interest
76 and it was also shown to attenuate the severity of the disorder in ASD patients, as measured
77 by Childhood Autism Rating Scale (CARS,) with no major adverse events ^[8-11]. The first
78 randomised controlled trial in 60 cases aged 3 to 11 years, of which the average age was 6.8
79 years, showed improvements in CARS and Clinical Global Impressions Scale (CGI)-Global
80 Improvement-scale (CGI-I) with a main side effect mild hypokalemia ^[12]. Another
81 randomised controlled unblinded trial on 60 cases aged 2.5 to 6.5 years found that the add-on
82 bumetanide together with the Applied Behaviour Analysis (ABA) was superior to ABA alone
83 as measured by both CGI-I and Autism Behaviour Checklist (ABC) total score. In that study,
84 no significant side effects were reported^[13]. A randomised, four-arm, dose-response trial to
85 optimize bumetanide dosage on 88 cases aged 2 to 18 years showed improvements in CARS
86 total score and global Social Responsiveness Scales (SRS) score, as well as the subcategories
87 social communication and restricted interests and repetitive behaviour in SRS, however some
88 adverse events were observed, including hypokalemia, increased urine elimination, loss of
89 appetite, dehydration and asthenia^[14]. Limitations of these trials included relatively small
90 sample sizes and the patient heterogeneity in terms of a large age range from infants to
91 adolescents. Therefore, the safety and efficacy of bumetanide in young children remain
92 uncertain. In addition, it is important to understand the neural mechanisms of symptom
93 reduction by bumetanide in the human autistic brain. Towards filling this gap, our most
94 recent open-label trial on 83 children with ASD aged 3 to 6 years showed improvements in
95 both CARS and CGI and provided the neuroimaging evidence suggesting that bumetanide
96 reduces γ -aminobutyric acid (GABA) in the human autistic brain, especially in the insular
97 cortex (IC)^[15]. The IC is known as a brain region involved in the integration of sensory,

98 emotional, and autonomic information in order to allocate cognitive resources and guide
99 behaviour^[16]. These functions were variably impaired in ASD rodent models and in
100 individuals with ASD^[17]. Our previous findings suggested that bumetanide decreases GABA
101 in the IC, and thereby ameliorates ASD symptoms in children^[15].

102

103 These recent findings by our group encouraged us to conduct a randomised, double-blind,
104 placebo-controlled trial of bumetanide, in which we investigated the safety and efficacy of
105 bumetanide treatment for 3 months in children aged 3 to 6 years with ASD. In addition, we
106 used magnetic resonance spectroscopy (MRS) to measure the neurotransmitter concentrations
107 of GABA and glutamate in the IC obtained before and after treatment. This would allow us to
108 determine whether the therapeutic effect of bumetanide on autistic symptoms was associated
109 with changes in GABA.

110

111 **Materials and methods**

112 Detailed methods are provided in the Appendix-supplementary methods.

113

114 **Trial design and participants**

115 The study used a randomised, double-blind, placebo-controlled, parallel-group design. We
116 recruited eligible children from outpatient clinics at the Xinhua Hospital affiliated to
117 Shanghai Jiao Tong University School of Medicine. Participants were considered eligible if
118 they were diagnosed with ASD according to the Diagnostic and Statistical Manual of Mental
119 Disorders, Fifth Edition (DSM-5); aged between 3 to 6 years; confirmed diagnosis with the
120 Autism Diagnostic Interview–Revised (ADIR) and/or Autism Diagnostic Observation
121 Schedule (ADOS), a CARS total score of no less than 30 and had no access to any
122 behavioural intervention. We excluded patients if they had liver or kidney dysfunction; a
123 history of allergy to sulfa drugs; abnormal electrocardiogram; genetic or chromosomal
124 abnormalities (exome-sequencing and/or microarray assays); were diagnosed with
125 neurological disease (e.g. epilepsy, Rett syndrome), or psychiatric disorder (e.g. very early-
126 onset schizophrenia) other than ASD; severe hearing or visual impairment; were currently
127 using melatonin for the treatment of sleep disorders or cessation of such treatment for less
128 than 3 weeks. Additional exclusion criteria for neuroimaging were any contraindications of
129 magnetic resonance imaging (MRI) scanning and any previous reports of traumatic brain
130 injury.

131 Participants were randomly assigned in a 1:1 ratio to receive 0.5mg oral bumetanide or
132 placebo twice daily for 3 months by use of a block randomisation scheme. Bumetanide and
133 placebo tablets were identical in appearance, smell and taste. Patients and their caregivers,
134 investigators, experienced psychiatrists, and data analysts remained masked for the treatment
135 allocation until the study database was locked. The study was conducted in accordance with
136 the guidelines for Good Clinical Practice and the principles of the Declaration of Helsinki
137 and was reviewed and approved by the Ethics Committee of Xinhua Hospital affiliated to
138 Shanghai Jiao Tong University School of Medicine (XHEC-C-2016-103). Parents or legal
139 guardians of all participants provided written informed consent. The trial was registered with
140 ClinicalTrials.gov (NCT03156153).

141

142 **Outcome measures**

143 The primary outcome was the change from baseline to 3-month in CARS (the total score
144 ranges from 15 to 60 by summing up the 15 items, with a higher score indicating more severe
145 autism)^[18]. Confirmatory secondary outcomes were the change from baseline to 3-month in
146 ADOS, SRS and ~~the Clinical Global Impression-Improvement (CGI-I)~~ to rate how much the
147 patient's illness has improved or worsened relative to a baseline measurement (a seven-point
148 scale; 1 = "very much improved" to 7 = "very much worse"). SRS is applicable to children
149 over 4 years old and therefore only a subset of children completed the SRS measures. The
150 exploratory outcomes were the changes from baseline to 3-month in neurotransmitter (e.g.
151 GABA and glutamate) concentrations within the IC. The safety outcomes were symptoms
152 and blood parameters (serum potassium, uric acid, and creatine) closely monitored during the
153 treatment period.

154

155 **Statistical analysis**

156 Participants who received at least one dose of the study medication were included in the
157 modified intention-to-treat population of primary outcome analysis and safety analysis, which
158 was performed when the last trial participant reached 3 months.

159

160 The treatment effect of bumetanide was assessed by the change of the total score of CARS
161 from baseline to 3-month using a mixed model^[19]. If the treatment effect was significant on
162 the total score of CARS, we further tested the effects on 6 CARS items separately as
163 suggested by our previous open-label study^[15]. Adjustment for multiple comparisons was

164 performed at $p = 0.05$ using the false discovery rate (FDR) approach (Benjamin-Hochberg
165 adjusted- p value). For CGI-I, the Kruskal–Wallis chi-squared test was applied to assess the
166 significance level of the inter-group difference. Similarly, the treatment effects of bumetanide
167 on the neurotransmitters in the insular cortex were tested by mixed models adjusted for age,
168 sex, and intelligence. A permutation-based linear model was used to study the association
169 between the changes of the neurotransmitter concentrations and the change of the CARS total
170 scores, conducted by treatment group, adjusted for age, sex, intelligence, baseline CARS
171 scores and neurotransmitter concentrations. If a significant association was detected,
172 associations between the change in MRS measurement and the CARS items which showed
173 significant treatment effects were further investigated and FDR correction was applied to
174 control for multiple comparisons with items.

175

176 **Results**

177 **Participants**

178 From May 24th, 2017 through March 25th, 2019, of one hundred seventy-seven patients who
179 were screened for eligibility, 120 were enrolled and 60 (50%) were randomly assigned to the
180 bumetanide group and 60 (50%) to the placebo group (Figure 1). Among these 120 patients,
181 one patient withdrew consent before the initiation of trial treatment and did not take any dose
182 of study medication, resulting in 59 patients in the bumetanide group and 60 in the placebo
183 group in the modified intend-to-treat analysis. Fifty-eight (97%) patients in the bumetanide
184 group and 58 (97%) in the placebo group completed the 3-month study. One patient in the
185 bumetanide group (who suffered from hand, foot, and mouth disease at week 4) and two in
186 the placebo group (who were given the access to behavioural therapy at week 5) discontinued
187 the treatment before the end of trial. For the MRS data, in the bumetanide group, 45 patients
188 were scanned before the treatment, 38 after and 37 at both times due to MRI compliance and
189 tolerance in young children. In the placebo group there were 49 patients scanned before the
190 treatment, 43 after and 43 at both times. After the quality control of the MRS data, as
191 described in the Methods section, the final sample consisted of 18 in the bumetanide group
192 and 23 in the placebo group (Figure 1). The mean age of all patients was 4.12 years; 84%
193 were male. The mean CARS total score was 38.17 (SD 4.08); 71% of all patients had severe
194 symptoms with a total score exceeding 36 and a rating of 3 or higher on at least 5 of the 15
195 CARS items. Baseline characteristics such as age, sex, severity of ASD and IQ/DQ were
196 well-balanced across the two groups (Table 1).

197

198 **Outcomes**

199 In the modified intention-to-treat analysis, the total score of CARS decreased on average by
200 2.23 (SD 1.29) points in the bumetanide group and by 1.28 (SD 0.91) points in the placebo
201 group. Using the mixed-effect model, the therapeutic effect of bumetanide compared with
202 placebo was statistically significant ($t_{117} = -4.67$, $p = 8.20 \times 10^{-6}$; Figure 2a-b) and had a
203 moderate-to-large effect size as measured by the partial-eta squared ($\eta_p^2 = 0.15$, Cohen's $D =$
204 0.86 using a t-test of the group difference in the reduction of CARS total score). Significant
205 decreases were also observed in the CARS items, including item 1 (impairment in human
206 relationships) and item 13 (activity level); after adjustment for multiple comparisons item 1
207 ($p\text{-perm} = 0.013$, $p\text{-FDR} = 0.039$) and item 13 ($p\text{-perm} = 0.011$, $p\text{-FDR} = 0.039$) remained
208 significant (Table 2). Compared with the placebo group, more patients in the bumetanide
209 group had greater reductions of CARS total score and fewer patients had smaller reductions.
210 The significance level of this difference between the distributions of the reduction of CARS
211 total score after treatment was confirmed by the Kolmogorov–Smirnov test ($D = 0.3$, $p =$
212 0.0112; Figure 2c). Furthermore, this statistical difference in the reduction of CARS total
213 score after treatment was supported by the analysis of the CGI-data for responders versus
214 non-responders indicated with a trend ($\chi^2 = 3.5$, $p = 0.061$, supplementary Table 1).
215 Moreover, a significant amelioration ($t = -2.107$, $p = 0.0398$, $p\text{-perm} = 0.046$) in SRS was
216 shown in bumetanide group (11.16 (18.30)) comparing with that in placebo group (1.33
217 (16.27)), which provided an independent support for primary measure CARS (supplementary
218 Table 5). However, no significant difference in ADOS was observed when comparing before
219 and after 3-months treatment (supplementary Table 4).

220

221 The mean decrease between baseline and 3-month follow-up in the GABA/N-acetylaspartate
222 (GABA/NAA) ratio in the IC was 0.0439 (SD 0.06) in the bumetanide group and 0.0002 (SD
223 0.06) in the placebo group. We found a significant difference in the changes of the
224 GABA/NAA ratio between the drug group and the placebo group while controlling for the
225 age, sex and IQ/DQ ($t_{36} = -2.335$, $p = 0.025$). Using the mixed-effect model, we found that
226 bumetanide compared with placebo had a significant effect over the 3-month treatment
227 course on the GABA/NAA ratio ($t_{40} = -2.20$, $p = 0.034$; $p\text{-perm} = 0.04$, $\eta_p^2 = 0.08$; Cohen's D
228 = 0.71 using a t-test of the group difference in the reduction of GABA/NAA ratio) (Figure
229 3a-b). Using the mixed-effect model, we also examined the NAA/Creatine (NAA/Cr) ratio
230 and GABA/Cr ratio^[20], and found no drug effect on NAA/Cr but a drug effect on GABA/Cr

231 ($t_{38} = -2.02$, $p = 0.051$, $p\text{-perm} = 0.04$, $\eta_p^2 = 0.074$)(supplementary Table 6). These results
232 excluded the confounding effect of possible changes in NAA and further confirmed the drug
233 effect on GABA. At the baseline before treatment, no significant difference in neither the
234 GABA/Cr ratio nor the NAA/Cr ratio between the bumetanide group and the placebo group.
235 The GABA change was predictive of the change in symptom severity as measured by the
236 CARS total score ($t_{11} = 2.278$, $p = 0.035$) in the bumetanide group, but not in the placebo
237 group ($t_{16} = 0.483$, $p = 0.594$) after the treatment (Figure 3c). For the specific symptom
238 dimensions, the GABA change was predictive of the change in the activity level ($t_{11} = 2.553$,
239 $p = 0.009$, $p\text{-FDR} = 0.017$).

240

241 **Adverse events**

242 All adverse events were graded 4 (mild) and no patient withdrew from the trial due to adverse
243 events (Table 3). The most common adverse event observed was polyuria: 40 (67.8%) in the
244 bumetanide group and 5 (8.3%) in the placebo group. However, there was no significant
245 difference ($t_{57} = -0.29$, $p = 0.77$) between the decreases of CARS total scores in the subjects of
246 bumetanide group with polyuria 2.26 (1.31) versus without polyuria 2.16 (1.28)
247 (supplementary Table 7). There were 11 (18.6%) at 1-week, 4 (6.8%) at 1-month and 2
248 (3.4%) at 3-month in the bumetanide group developed mild hyperuricemia, and it was
249 resolved by appropriate diet adjustment and more water drinking. A total of 6 in the
250 bumetanide group (1 (1.7%) at 1-week and 5 (8.5%) at 3-month) developed mild
251 hypokalemia, with serum potassium between 3.0 and 3.5 mmol/L. Hypokalemia was resolved
252 after patients were administered potassium supplements and were advised to eat potassium-
253 rich foods. The remaining side effects were loss of appetite (4 (6.8%) versus 1 (1.7%)),
254 constipation (5 (8.5%) versus 2 (3.3%)), nausea (5 (8.5%) versus 2 (3.3%)), vomiting (1
255 (1.7%) versus 2 (3.3%)), diarrhea (0 versus 1 (1.7%)) and sleeping problem (1 (1.7%) versus
256 0) in the bumetanide group versus the placebo group (Table 3). Neither the change in blood
257 potassium nor change in blood uric acid levels were associated with the decreases of CARS
258 total scores (supplementary Table 8 & 9).

259 **Discussion and conclusion**

260 In this randomised, double-blind, placebo-controlled trial of bumetanide in a large group (n
261 = 120) of children with ASD aged 3 to 6 years, we found that bumetanide at a dose of 0.5 mg
262 twice daily, significantly improved the core symptoms of ASD as measured by the primary
263 clinical outcome (CARS total score), with no clinically significant side effects. There was a
264 moderate to large effect size ($\eta_p^2 = 0.15$) of bumetanide treatment. We also found that the
265 treatment of bumetanide reduced the insular GABA, and greater reduction in GABA was
266 associated with greater decrease in the CARS total score in the patients who received
267 bumetanide.

268

269 Although a number of early intensive behavioural interventions have been developed, the
270 generalizability and availability remain a significant barrier for children with ASD after
271 diagnosis^[4]. For example, in some European countries, more than 20% of children aged 7
272 years or younger receive no intervention at all.⁶ In China, the age of diagnosis is often
273 between 3 and 6 years old, which is also a critical time window of rapid and dramatic
274 postnatal brain development, and of fundamental acquisition of social and cognitive
275 development^[21]. The focus on children with ASD at an early age indeed may have the highest
276 potential to improve social cognition and social learning deficits. However, there are fewer
277 published trials in preschool-aged children with ASD than in school-aged children or adults.
278 The children in the present trial were all aged 3 to 6 years, and the majority had severe ASD
279 (71%) as determined by CARS total score. We conclude that the bumetanide is safe and
280 effective in improving disease severity and attenuating social impairment and improving
281 activity level for children, aged 3 to 6 years old, with ASD, and therefore provides a viable
282 alternative therapeutic option for young patients in addition to behavioural interventions.

283

284 The therapeutic effects of bumetanide on autistic young children are encouraging, which calls
285 for further rigorous studies on the underlying mechanisms. Based on the results, we suggest
286 that the decreased GABA in the IC after bumetanide treatment in children with ASD
287 mediates the improvement of core symptoms. The bumetanide-mediated reduction of insular
288 GABA in the present study was positively associated with the decrease of CARS total score
289 after the treatment with bumetanide. No significant treatment effect of bumetanide was
290 observed on the glutamate concentration in the bumetanide group compared with the placebo
291 group ($t_{39} = -1.50$, $p = 0.143$; Supplementary Method). This finding supports our previous
292 open-label trial in 83 young patients which provided evidence that the symptom improvement

293 following bumetanide treatment was significantly associated with reduced GABA in IC but
294 not in visual cortex^[15]. We also found that the association of the insular GABA decrease was
295 especially related to an improvement of a sensorimotor-related CARS item (item13 activity
296 level), in keeping with our previous findings^[15]. According to DSM-5, the sensorimotor-
297 related symptoms belong to the ASD core symptoms, and have been shown to precede and be
298 predictive of social-communication deficits in childhood^[22].

299

300 Bumetanide has been suggested to act on its molecular target Na-K-Cl cotransporter 1
301 (NKCC1) in the adult brain shown by animal studies^[23, 24]. NKCC1 acts as an inhibitor to
302 reduce the intracellular chloride concentration ($[Cl^-]_i$) to promote the inhibitory nature of
303 GABAergic synaptic transmission at the cellular level. Bumetanide has also been reported to
304 hyperpolarize GABA reversal potential in immature neurons in mouse pups treated with
305 intraperitoneal injections of bumetanide^[25]. We found that bumetanide reduced insular
306 GABA but not glutamate in autistic children, suggesting that bumetanide-mediated decrease
307 in cortical GABA level might be considered as facilitating the restoration of GABAergic
308 functioning, which is highly related to autistic core symptoms^[15]. In addition, bumetanide as
309 a NKCC1 inhibitor has been identified to preferentially acts on the GABAergic inhibitory
310 interneurons over the glutamatergic excitatory cortical neurons in laboratory animals^[26],
311 providing a potential mechanism for the specificity of GABA levels.

312

313 As a single-site investigator-initiated trial, the current study still has some limitations,
314 including a relatively short treatment period (3 months) for bumetanide, which precluded an
315 evaluation of long-lasting effect due to the short follow-up time. Thus, future studies with
316 longer treatment periods would be helpful to evaluate the long-term therapeutic effects of
317 bumetanide in children with ASD. In addition, although a pretreatment education session was
318 given to all the participants to prevent any potential side-effect and ensure the
319 implementation of blindness, some laboratory value changes (serum potassium and uric acid)
320 may increase the risk of unblinding. However, the changes in laboratory values did not
321 correlate with treatment response, which seems unlikely to have affected the results. Another
322 minor limitation includes the lack of blinding validation, such as assessing whether the
323 parents/caregivers knew whether the ASD child was on bumetanide or placebo. Consistent
324 with previous studies, the present trial indicated that possibly not all young children with
325 ASD will benefit from bumetanide treatment in such a short period (3-months). Due to the
326 high heterogeneity in ASD, further investigations will be required to identify specific

327 biomarkers for the potential subpopulation of effective responders to bumetanide treatment. It
328 is worth mentioning that the CARS is used as a diagnostic tool. The clinical significance of
329 change in CARS total score remains to be replicated in future studies utilising additional
330 clinically sensitive measures to verify the clinical efficacy of bumetanide in children with
331 ASD. In our MRS experiment, NAA was the only available peak acquired simultaneously to
332 our metabolites of interest, namely GABA. To control for potential drifts in the spectra
333 during acquisition and variations between scans, a simultaneously acquired reference peak is
334 highly preferable. Therefore, we chose to compare the GABA/NAA ratio before and after
335 treatment to assess the drug effect on GABA. It is theoretically possible that the drug effect
336 detected for the GABA/NAA ratio was driven by NAA. However, the nonsignificant drug
337 effect on both (Glx = Glutamate + Glutamine)/NAA and NAA/Cr but significant effect on
338 GABA/Cr might suggest that the detected drug effect was unlikely to be driven by NAA.
339 Future studies using more direct measurement of GABA and in additional brain regions may
340 reveal more detailed effect of bumetanide in the autistic brains.

341

342 In summary, this trial in a large group of children with ASD aged 3 to 6 years old
343 demonstrated that 3-month treatment of bumetanide at a dose of 0.5 mg twice daily is safe
344 and effective in improving the core symptoms of ASD. In addition, we found that the
345 therapeutic effect of bumetanide on disease was associated with changes in GABA in IC,
346 which may help to elucidate the therapeutic mechanism of bumetanide.

347

348 **Conflicts of interest**

349 Prof. Barbara J. Sahakian consults for Cambridge Cognition, Greenfield BioVentures and
350 Cassava Sciences. All other authors declare no conflict of interest.

351

352 **Acknowledgments**

353 This project was funded by the Shanghai Municipal Commission of Health and Family
354 Planning (No.2017ZZ02026, No. 2018BR33, No.2017EKHWYX-02 and No.GDEK201709),
355 Shanghai Shenkang Hospital Development Center (No.16CR2025B), Shanghai Municipal
356 Education Commission (No.20152234), National Natural Science Foundation of China (No.
357 81571031, No. 81761128035, No.81930095, No. 81873909, No.81701334, No. 81703249 ,
358 No.82001771 and No. 31860306), Shanghai Committee of Science and Technology
359 (No.17XD1403200, No.17ZR1444400, No.19410713500, No.18DZ2313505), Xinhua

360 Hospital of Shanghai Jiao Tong University School of Medicine (2018YJRC03, Talent
361 introduction-014 and Top talent-201603), National Human Genetic Resources Sharing
362 Service Platform (2005DKA21300), the National Key Research and Development Program
363 of China (2018YFC0910503), 111 Project (No.B18015), the Shanghai Municipal Science and
364 Technology Major Project (No.2018SHZDZX01), Guangdong Key Project in "Development
365 of new tools for diagnosis and treatment of Autism" (2018B030335001), Science and
366 Technology Department of Yunnan Province (202001AV070010) and ZJ Lab.

367 **Evaluators:** Mingyu Xu, MD PhD, Yun Fan, BA, Danping Wu, MS, Yongjun Chen, MS

368 **TSC:** Kun Sun, MD PhD, Zhongchen Luo, PhD, Jiong Li, MD PhD, Ti-Fei Yuan, PhD, Li
369 Yang, PhD

370 **DSMB:** Lixiao Shen, MD PhD, Feng Li, MD PhD, Yongguo Yu, MD PhD, Wei Zhou, MD
371 PhD, Xi Zhang, PhD

372 We also thank the children and families who participated in this study.

373

374 **Author contributions**

375 Fei Li and Qiang Luo designed the study. Yuan Dai, Lingli Zhang, Yiting Ji, Kai Wang,
376 Xujian Du, Yun Tang, Xin Liu, Hua He and Shining Deng collected the data. Yuan Dai,
377 Lingli Zhang, Juehua Yu, Wei-Guang Li and Christelle Langley interpreted the data and
378 wrote the report. Barbara J. Sahakian contributed to the data analysis and interpretation and
379 manuscript preparation. Xin Zhou, Jun Zhang and Jianfeng Feng provided methodology
380 support. Fei Li and Qiang Luo were the principal investigators. All authors approved the final
381 version of the manuscript. Xinhua Hospital Shanghai Jiao Tong University School of
382 Medicine, China was leading the study design and conducted the clinical trial; Fudan
383 University, China was leading the biostatistics and MRS data analysis; University of
384 Cambridge, UK team provided supports in study design, data interpreting strategy and article
385 editing. Qiang Luo did the statistical analysis and signed it off. The statistical analysis plan
386 was finalized on August 15, 2016. Data lock occurred on August 20, 2019. Xinhua Hospital
387 Clinical Research Unit (CRU) provided financial administration. On-site audit was regularly
388 carried out by the Shanghai Shenkang Hospital Development Center with no critical findings.

389

390

References

391

392 [1] Accordino RE, Kidd C, Politte LC, et al. Psychopharmacological interventions in
393 autism spectrum disorder. *Expert Opin Pharmacother*, 2016, 17: 937-952

- 394 [2] Sun X, Allison C, Wei L, et al. Autism prevalence in china is comparable to western
395 prevalence. *Mol Autism*, 2019, 10: 7
- 396 [3] Baio J, Wiggins L, Christensen DL, et al. Prevalence of autism spectrum disorder
397 among children aged 8 years - autism and developmental disabilities monitoring network, 11
398 sites, united states, 2014. *MMWR Surveill Summ*, 2018, 67: 1-23
- 399 [4] Schreibman L, Dawson G, Stahmer AC, et al. Naturalistic developmental behavioral
400 interventions: Empirically validated treatments for autism spectrum disorder. *J Autism Dev*
401 *Disord*, 2015, 45: 2411-2428
- 402 [5] Lord C, Elsabbagh M, Baird G, et al. Autism spectrum disorder. *Lancet*, 2018, 392:
403 508-520
- 404 [6] Salomone E, Beranova S, Bonnet-Brilhault F, et al. Use of early intervention for
405 young children with autism spectrum disorder across europe. *Autism*, 2016, 20: 233-249
- 406 [7] Hastings RP, Robertson J, Yasamy MT. Interventions for children with pervasive
407 developmental disorders in low and middle income countries. *J Appl Res Intellect Disabil*,
408 2012, 25: 119-134
- 409 [8] Grandgeorge M, Lemonnier E, Degrez C, et al. The effect of bumetanide treatment on
410 the sensory behaviours of a young girl with asperger syndrome. *BMJ Case Rep*, 2014, 2014:
411 [9] Hadjikhani N, Zurcher NR, Rogier O, et al. Improving emotional face perception in
412 autism with diuretic bumetanide: A proof-of-concept behavioral and functional brain imaging
413 pilot study. *Autism*, 2015, 19: 149-157
- 414 [10] Kharod SC, Kang SK, Kadam SD. Off-label use of bumetanide for brain disorders:
415 An overview. *Front Neurosci*, 2019, 13: 310
- 416 [11] Lemonnier E, Ben-Ari Y. The diuretic bumetanide decreases autistic behaviour in five
417 infants treated during 3 months with no side effects. *Acta Paediatr*, 2010, 99: 1885-1888
- 418 [12] Lemonnier E, Degrez C, Phelep M, et al. A randomised controlled trial of bumetanide
419 in the treatment of autism in children. *Transl Psychiatry*, 2012, 2: e202
- 420 [13] Du L, Shan L, Wang B, et al. A pilot study on the combination of applied behavior
421 analysis and bumetanide treatment for children with autism. *J Child Adolesc*
422 *Psychopharmacol*, 2015, 25: 585-588
- 423 [14] Lemonnier E, Villeneuve N, Sonie S, et al. Effects of bumetanide on neurobehavioral
424 function in children and adolescents with autism spectrum disorders. *Transl Psychiatry*, 2017,
425 7: e1124
- 426 [15] Zhang L, Huang C-C, Dai Y, et al. Symptom improvement in children with autism
427 spectrum disorder following bumetanide administration is associated with decreased
428 gaba/glutamate ratios. *Translational Psychiatry*, 2020, 10: 9
- 429 [16] Uddin LQ. Salience processing and insular cortical function and dysfunction. *Nat Rev*
430 *Neurosci*, 2015, 16: 55-61
- 431 [17] Gogolla N, Takesian AE, Feng G, et al. Sensory integration in mouse insular cortex
432 reflects gaba circuit maturation. *Neuron*, 2014, 83: 894-905
- 433 [18] Schopler E, Reichler RJ, DeVellis RF, et al. Toward objective classification of
434 childhood autism: Childhood autism rating scale (cars). *J Autism Dev Disord*, 1980, 10: 91-
435 103
- 436 [19] Nieuwenhuis S, Forstmann BU, Wagenmakers EJ. Erroneous analyses of interactions
437 in neuroscience: A problem of significance. *Nat Neurosci*, 2011, 14: 1105-1107
- 438 [20] Donahue MJ, Near J, Blicher JU, et al. Baseline gaba concentration and fmri response.
439 *Neuroimage*, 2010, 53: 392-398
- 440 [21] Czeizel AE, Dudas I. Prevention of the first occurrence of neural-tube defects by
441 periconceptional vitamin supplementation. *N Engl J Med*, 1992, 327: 1832-1835
- 442 [22] Mosconi MW, Sweeney JA. Sensorimotor dysfunctions as primary features of autism
443 spectrum disorders. *Sci China Life Sci*, 2015, 58: 1016-1023

444 [23] Brandt C, Nozadze M, Heuchert N, et al. Disease-modifying effects of phenobarbital
445 and the nkcc1 inhibitor bumetanide in the pilocarpine model of temporal lobe epilepsy. J
446 Neurosci, 2010, 30: 8602-8612

447 [24] Romermann K, Fedrowitz M, Hampel P, et al. Multiple blood-brain barrier transport
448 mechanisms limit bumetanide accumulation, and therapeutic potential, in the mammalian
449 brain. Neuropharmacology, 2017, 117: 182-194

450 [25] Wang DD, Kriegstein AR. Blocking early gaba depolarization with bumetanide
451 results in permanent alterations in cortical circuits and sensorimotor gating deficits. Cereb
452 Cortex, 2011, 21: 574-587

453 [26] Martina M, Royer S, Pare D. Cell-type-specific gaba responses and chloride
454 homeostasis in the cortex and amygdala. J Neurophysiol, 2001, 86: 2887-2895

455

456 **Figures**

457 **Figure 1: Trial profile. QC: Quality Control.**

458

459 **Figure 2: The change in CARS total score from baseline to 3-month follow-up.** (a) Box
460 plot and (b) line plot show the change in CARS total score from baseline to 3-month follow-
461 up; (c) A line graph of the histogram values of the reduction of CARS total score after 3-
462 month treatment for the bumetanide (in red) and the placebo (in green) groups.

463

464 **Figure 3: Changes in neurotransmitter levels after bumetanide administration.** (a)
465 Insular cortex VOIs in MRS. ppm: parts-per-million. (b) Box plot shows the changes in
466 GABA/NAA ratios from baseline to 3-month follow-up in placebo and bumetanide groups.(c)
467 The association of changes of GABA/NAA ratio with the changes of CARS total score after
468 treatment for 3-month follow-up.

Table 1: Baseline characteristics of study participants					
<i>Variable</i>	<i>Bumetanide</i>	<i>Placebo</i>	Degree of freedom	Statistic	p value
N	59	60			
Age, years	4.03 (0.81)	4.22 (0.94)	115.0	1.17	0.25
Sex					
Female	8 (14%)	11 (18%)	1	0.51	0.48
Male	51 (86%)	49 (82%)			
ADOS*					
Communication	6.41 (1.53)	6.17 (1.65)	116.6	-0.82	0.41
Social score	10.83 (1.96)	10.47 (2.22)	115.6	-0.95	0.34
Social + Communication	17.24 (3.28)	16.63 (3.40)	116.9	-0.99	0.33
Imagination	2.75 (1.29)	2.33 (1.24)	116.6	-1.77	0.08
Repetition	2.32 (1.44)	1.92 (1.33)	115.9	-1.59	0.11
ADOS (+) *	59 (100%)	60 (100%)			
ADIR*					
Total A	21.22 (5.39)	20.68 (6.12)	115.6	-0.51	0.61
Total B non-verbal	10.79 (3.25)	10.40 (2.76)	31.0	-1.46	0.15
Total B verbal	12.59 (4.61)	10.50 (3.79)	79.9	-0.58	0.56
Total C	6.22 (2.38)	6.23 (2.25)	116.4	0.03	0.98
Total D	3.22 (1.60)	3.53 (1.67)	116.9	1.04	0.30
ADIR (+) *	48 (82%)	49 (82%)	1	0.002	0.97
CARS*					
Total score	38.27 (3.39)	38.08 (4.68)	107.6	-0.26	0.79
Number of items scored ≥ 3	6.20 (2.91)	6.00 (3.97)	108.1	-0.32	0.75
Severity of ASD*					
Severe	46 (78%)	39 (65%)	1	2.45	0.12
Mild to moderate	13 (22%)	21 (35%)			
Comorbidity with DD/ID*					
With DD/ID	44 (75%)	39 (65%)	1	1.29	0.26
Without DD/ID	15 (25%)	21 (35%)			

Data are mean (SD) or n (%). Group differences are evaluated with Welch's t test for continuous variables and Pearson's chi-squared test for categorical variables. *ADOS=The Autism Diagnostic Observation Schedule. *ADIR=The Autism Diagnostic Interview–Revised. *CARS=Childhood Autism Rating Scale. *Data shown in the ADOS (+) or ADIR (+) are the number and proportion of participants that met the criteria for ADOS or ADIR. *Severity of ASD was defined according to CARS: Severe symptoms of ASD were participants whose total score exceeded 36 and who had a rating of 3 or higher on at least 5 of the 15 items of CARS. *DD/ID=Developmental delay/intellectual disability: By intellectual assessment, the patients with developmental quotient (DQ) < 75 assessed using Gesell development scales, and intelligence quotient (IQ) < 70 assessed using WISC-R or WPPSI (Wechsler Intelligence Scale for children) were diagnosed as developmental delay or intellectual disability (DD/ID).

Table 2. Primary clinical efficacy outcomes at month 3

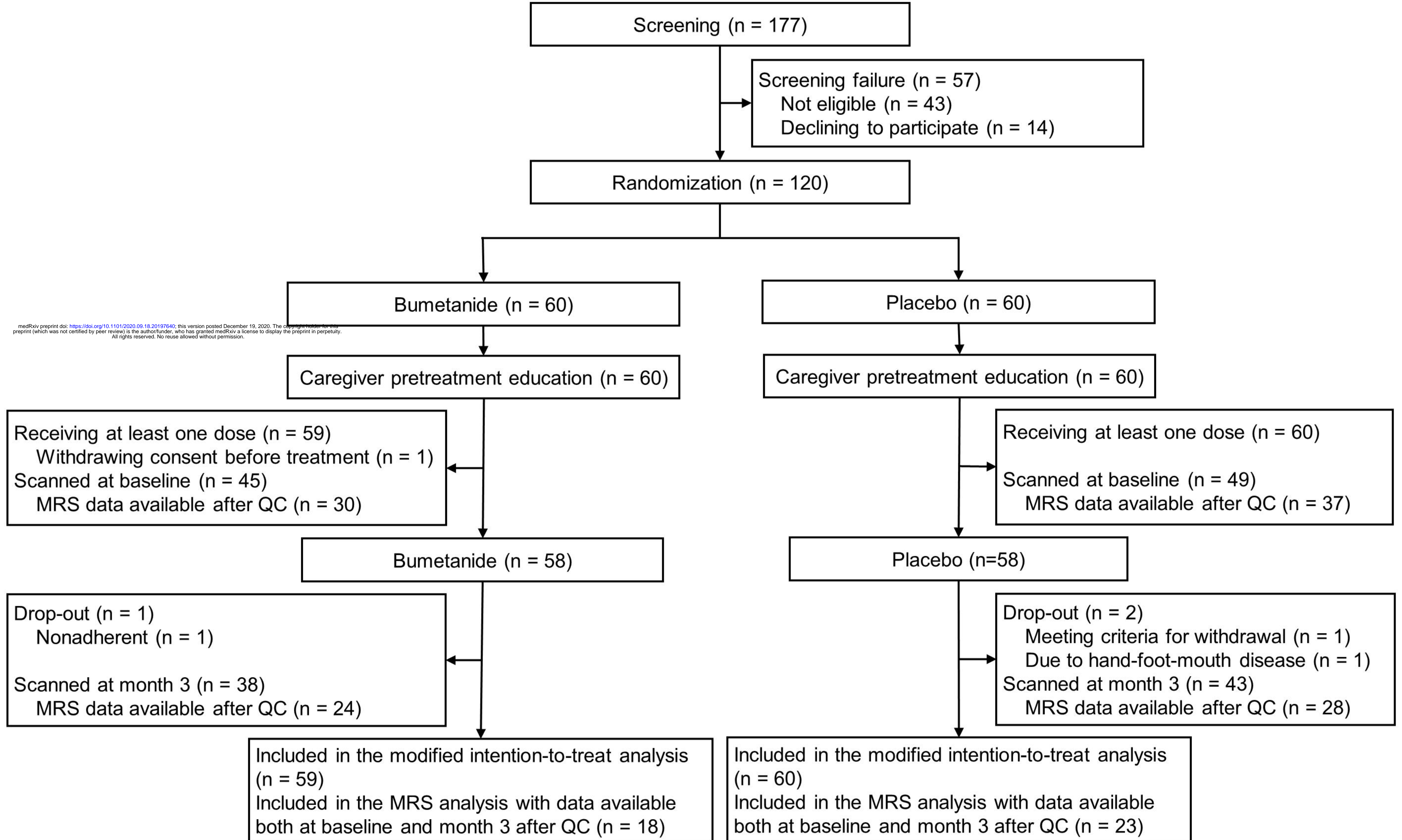
	Mean (SD) at baseline		Mean (SD) at month 3		Mean change (SD) between month 3		p value	Perm. p value*	FDR adjusted p value*
	Bumetanide (n=59)	Placebo (n=60)	Bumetanide (n=59)	Placebo (n=60)	Bumetanide (n=59)	Placebo (n=60)			
Total score of CARS	38.27 (3.39)	38.08 (4.68)	36.04 (3.30)	36.80 (4.55)	2.23 (1.29)	1.28 (0.91)	8.20× 10 ⁻⁶		
No. of items scored≥3	6.20 (2.91)	6.00 (3.97)	4.15 (2.59)	4.75 (3.83)	2.05 (1.29)	1.25 (1.26)	0.0008		
Items of CARS*									
Item 1	2.76 (0.44)	2.68 (0.55)	2.51 (0.39)	2.56 (0.50)	0.25 (0.30)	0.13 (0.25)	0.0123	0.0117	0.0380
Item 3	2.68 (0.45)	2.71 (0.47)	2.53 (0.45)	2.57 (0.44)	0.15 (0.27)	0.14 (0.32)	0.8409	0.8337	0.8337
Item 4	2.47 (0.48)	2.45 (0.52)	2.35 (0.43)	2.35 (0.52)	0.13 (0.29)	0.10 (0.24)	0.5774	0.5915	0.7098
Item 5	2.77 (0.42)	2.66 (0.50)	2.61 (0.41)	2.58 (0.51)	0.16 (0.27)	0.08 (0.27)	0.0868	0.0853	0.1280
Item 7	2.58 (0.45)	2.53 (0.47)	2.38 (0.38)	2.44 (0.43)	0.20 (0.30)	0.09 (0.33)	0.0523	0.0487	0.0973
Item 13	2.56 (0.47)	2.70 (0.45)	2.36 (0.45)	2.66 (0.45)	0.20 (0.37)	0.04 (0.31)	0.0112	0.0127	0.0380

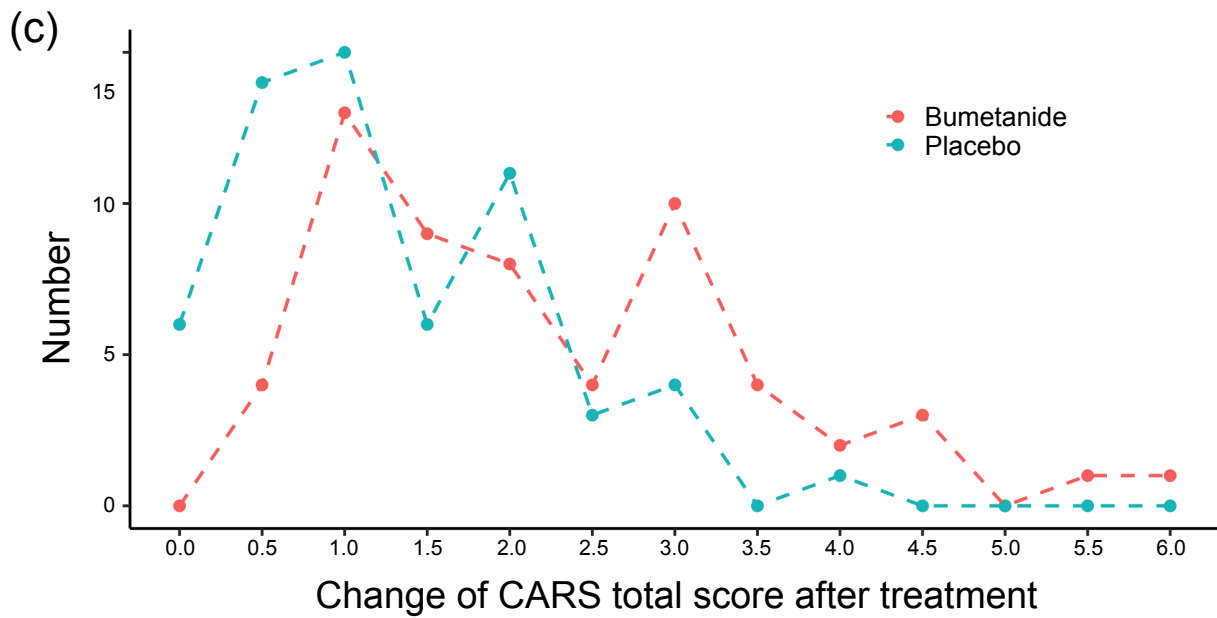
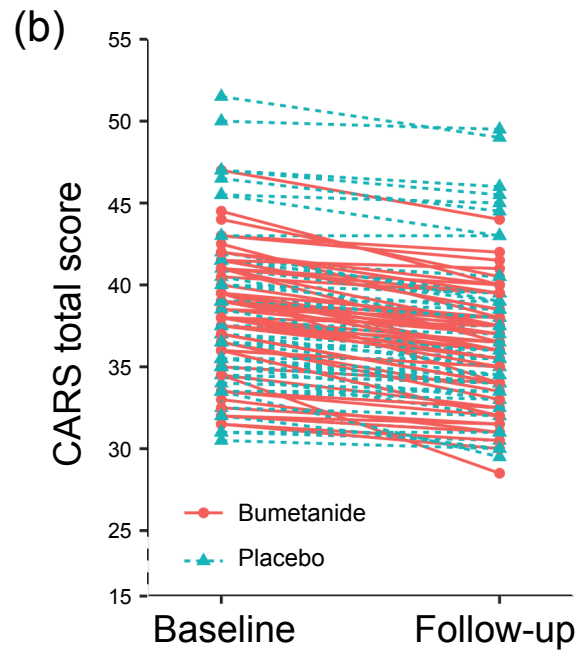
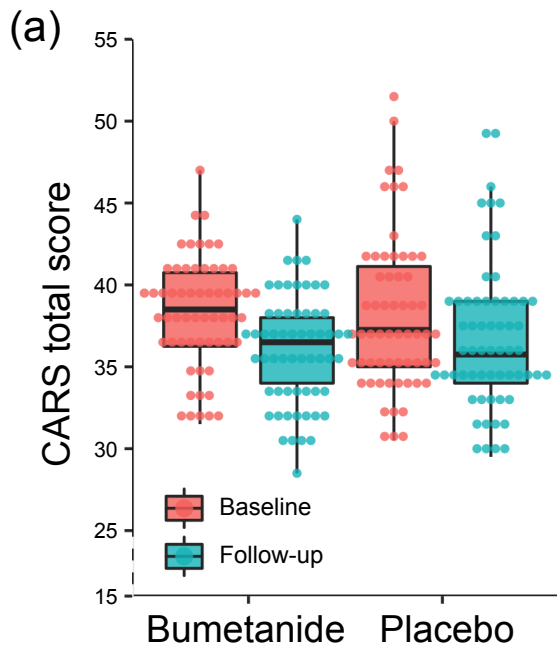
The treatment effect of bumetanide was assessed by testing the significance of an interaction term of a mixed effect model. The interaction term was defined by treatment X time. *Six items of the Childhood Autism Rating Scale (CARS) were analyzed based on the previous open-label study to identify those that were the most affected by the treatment. Item 1 in Human Relationships. Item 3: Inappropriate affect. Item 4: Bizarre Use of Body Movement and Persistence of Stereotypes. Item 5: Peculiarities in Relating to Nonhuman Objects. Item 7: Peculiarities of Visual Responsiveness. Item 13: Activity level. The p-value of this interaction term was listed. *Perm. p value: P value for time × group interaction in a mixed effect model based on 3000 random permutations. *FDR adjusted p value was calculated by multiple comparisons performed at p,0.05 using the false discovery rate approach. CARS=Childhood Autism Rating Scale

Table 3. Reported adverse events (in the modified intention-to-treat population)

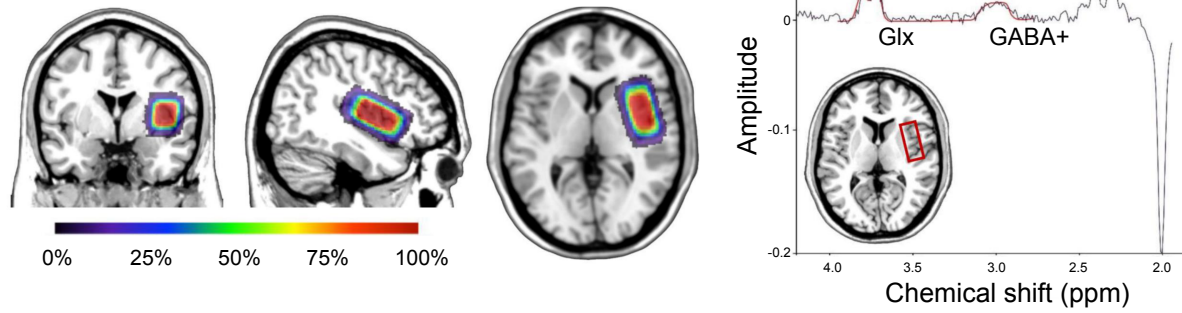
	Bumetanide (N=59)	Placebo (N=60)
Non-serious adverse event		
Polyuria*	40 (67.8%)	5 (8.3%)
Loss of appetite	4 (6.8%)	1 (1.7%)
Constipation	5 (8.5%)	2 (3.3%)
Nausea	1 (1.7%)	0 (0%)
Vomiting	1 (1.7%)	2 (3.3%)
diarrhea	0 (0%)	1 (1.7%)
Sleeping problem	1 (1.7%)	0 (0%)
Mild hypokalemia*		
1-week	1 (1.7%)	0 (0%)
1-month	0 (0%)	0 (0%)
3-month	5 (8.5%)	0 (0%)
Mild hyperuricemia*		
1-week	11 (18.6%)	1 (1.7%)
1-month	4 (6.8%)	0 (0%)
3-month	2 (3.4%)	1 (1.7%)
Serious adverse events		
Total	0 (0%)	0 (0%)

Data are n (%). No participants withdrew after adverse events. *Polyuria usually occurred within 3 hours of bumetanide treatment, which was resolved at the end of the treatment. *Mild hypokalemia: Serum potassium usually between 3.0 and 3.5mmol/L. Mild hypokalemia was resolved after patients were administered potassium supplements and were advised to eat potassium-rich foods. *Mild hyperuricemia usually occurred in one week or one month after the onset of treatment and was resolved by appropriate diet adjustment and more water drinking.

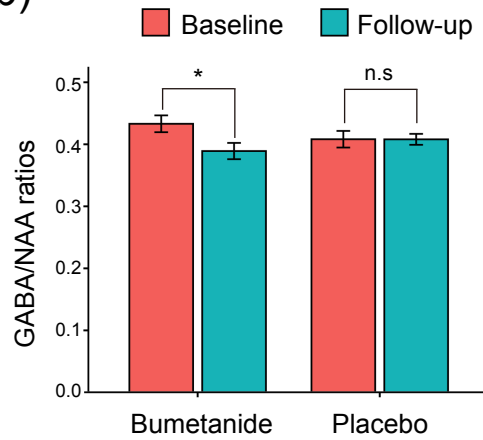




(a) MRS voxel: insula



(b)



(c)

