

1 **COVID-19 pandemic increased the magnitude of mortality risks associated with**
2 **cold temperature in Italy: A nationwide time-stratified case-crossover study**

3

4 Wenhua Yu¹, Rongbin Xu¹, Tingting Ye¹, Chunlei Han^{1,2}, Shanshan Li^{1*}, Yuming
5 Guo^{1*}

6

7 **Affiliations:**

8 ¹Department of Epidemiology and Preventive Medicine, School of Public Health and
9 Preventive Medicine, Monash University, Level 2, 553 St Kilda Road, Melbourne,
10 VIC 3004, Australia.

11 ²School of Public Health and Management, Binzhou Medical University. 346 Guanhai
12 Road, Yantai, China, PR. China, 264003.

13

14 ***Corresponding authors:**

15 1. Prof Yuming Guo, Department of Epidemiology and Preventive Medicine, School of Public
16 Health and Preventive Medicine, Monash University. Level 2, 553 St Kilda Road, Melbourne,
17 VIC 3004, Australia. Email: yuming.guo@monash.edu.

18 2. Dr. Shanshan Li, Department of Epidemiology and Preventive Medicine, School of Public
19 Health and Preventive Medicine, Monash University. Level 2, 553 St Kilda Road, Melbourne,
20 VIC 3004, Australia. Email: shanshan.li@monash.edu.

21

22 **Abstract**

23 **Backgrounds:** The coronavirus disease 2019 (COVID-19) pandemic and some
24 containment measures have changed many people's lives and behaviours. Whether the
25 pandemic could change the association between cold temperature and mortality remains
26 unknown.

27 **Objectives:** We aimed to assess whether the association between cold temperature and
28 all-cause mortality in the pandemic period has changed compared to non-COVID-19
29 period (2015-2019) in Italy.

30 **Methods:** We collected daily all-cause mortality data and meteorological data for 107
31 Italian provinces from 1, January 2015 to 31, May 2020. A time-stratified case-
32 crossover design with the distributed lag non-linear model was used to examine the
33 association between cold temperature and all-cause mortality during the first three
34 months (from March to May in 2020) of the COVID-19 outbreak and the same months
35 in 2015-2019.

36 **Results:** The relative risk (RR) of all-cause mortality at extreme cold temperature (2.5th
37 percentile of temperature at 3 °C) in comparison with the minimum mortality
38 temperature (24 °C) was 4.75 [95% confidence interval (CI): 3.90-5.79] in the pandemic
39 period, which is more than triple higher than RR [1.41 (95% CI: 1.33-1.50)] in the same
40 months during 2015-2019. The shift in cold-mortality association was particularly
41 significant for people aged 65-74 years [RR (95% CI): 5.98 (3.78-9.46) in 2020 versus
42 1.29 (1.10-1.51) in 2015-2019], 75-84 years [5.25 (3.79-7.26) versus 1.40 (1.25-1.56)],
43 and ≥ 85 years [5.03 (3.90-6.51) versus 1.52 (1.39-1.66)], but not significant for those
44 aged 0-64 years [1.95 (1.17-3.24) versus 1.24 (1.05-1.48)].

45 **Conclusion:** The findings suggest that the COVID-19 pandemic enhanced the risk of
46 cold temperature on mortality in Italy, particularly among the elderly people. Further

47 studies are warranted to understand the exact mechanism when detailed data are
48 available.

49

50

51 **1. Introduction**

52 With the coronavirus disease 2019 (COVID-19) infection sweeping across the globe at
53 a startling speed (Bedford et al. 2020), restrictive social containment measures such as
54 social distance, travel restriction, and regional emergency lockdown, have been widely
55 implemented to limit viral diffusion and reduce deaths from infection. Italy was one of
56 the countries with the largest number of confirmed cases at the beginning of the
57 COVID-19 outbreak. Since the first local transmission started on the 20th of February,
58 the number of reported cases had followed an exponential trend, peaking with 6,557
59 new cases on the 21st of March. Simultaneously, restrictive lockdown measures were
60 implemented to the whole country from the 9th of March and were not downgraded until
61 the end of May 2020.

62
63 The restricted activities have caused profound changes in people's lives and behaviours.
64 For example, stay-at-home orders would directly decrease outdoor physical activities
65 (Wang et al. 2020) and change the pattern of social contacts (Prem et al. 2020). It may
66 also indirectly lead to the damage of health through delayed health care for acute
67 emergencies (De Filippo et al. 2020; De Rosa et al. 2020), exacerbations of chronic
68 diseases (Wang and Zhang 2020), and psychological depression (Weinberger et al.
69 2020). Moreover, the effect of the pandemic on overall population mortality is unknown.
70 Several recent studies (Banerjee et al. 2020; Weinberger et al. 2020) reported that the
71 overall direct and indirect deaths related to COVID-19 may be underestimated in the
72 pandemic period due to the social containment and mitigation activities. Therefore, it
73 is worthwhile to assess the impact of the pandemic on the overall population health in
74 Italy.

75

76 The association between ambient temperature and mortality/morbidity outcomes has
77 been well-documented (Gasparrini et al. 2015; Guo et al. 2014). Apart from
78 hypothermia, many adverse health outcomes like cardiovascular and respiratory
79 diseases are associated with both cold and hot temperatures (Guo et al. 2016a; Zhao et
80 al. 2019a; Zhao et al. 2019b). However, the nature of the temperature-mortality
81 relationship in different climates and populations may exhibit significant variation
82 (Carder et al. 2005; Gasparrini et al. 2015). Generally, the non-linear temperature-
83 mortality association is mainly described as a J-, V- or U-shaped curve in different
84 regions and countries worldwide (Gasparrini et al. 2015; Guo et al. 2013; Guo et al.
85 2014; Ryti et al. 2016). The association could be affected by factors like geographic
86 locations, climatological and socioeconomic conditions, and human behaviours
87 (Gasparrini et al. 2015). Therefore, it is warranted to explore the association between
88 the temperature and the mortality during the pandemic period when people's lives and
89 behaviours have been hugely altered due to the restrictive social interventions.

90
91 Several previous assessments have focused on the effects of temperature variation on
92 the death of COVID-19 (Briz-Redón and Serrano-Aroca 2020; Ma et al. 2020; Xie and
93 Zhu 2020; Yao et al. 2020). However, the number of COVID-19 deaths in official
94 reports is likely underestimated due to improper COVID-19 death certification or the
95 lack of testing availability (Gill and DeJoseph 2020). As a result, many deaths may
96 suffer from misclassification to another respiratory disease, such as influenza. Unlike
97 the deaths attributed to COVID-19, all-cause mortality could be an accurate
98 measurement to estimate the direct and indirect effects of the pandemic on deaths
99 (Zylke and Bauchner 2020). Apart from avoiding the common misclassification of
100 cause-specific mortality, all-cause mortality incorporates both the deaths from the virus

101 and the mortality indirectly from the pandemic. For example, the incidence of out-of-
102 hospital cardiac arrest was significantly higher during the pandemic period in Italy than
103 that at the same time in 2019 (Baldi et al. 2020; Marijon et al. 2020). Such indirect
104 deaths from the pandemic may increase because of the avoidance of health care or the
105 lack of social supports, especially for the vulnerable population who are concerned
106 about being infected when going to a hospital (Baum and Schwartz 2020; Marijon et al.
107 2020; Rosenbaum 2020). The overlap of vulnerable populations in COVID-19 and
108 temperature-related diseases makes the measurement of the pandemic impacts
109 complexed. Thus, all-cause mortality could be a useful tool to comprehensively assess
110 the impact of temperature on human health in the pandemic.

111

112 In this study, we aimed to identify the risk of all-cause mortality associated with
113 temperature in the early spread period of COVID-19 across the 107 Italian provinces
114 between March 1st, 2020 and May 31st, 2020, and compare the association with that
115 during the same period in 2015-2019. We also performed stratified analyses by sex and
116 age to estimate the influence of temperature on different population in the pandemic
117 period in Italy.

118

119 **2. Methods**

120 **2.1 Data collection**

121 We collected daily all-cause mortality data for 7,904 municipalities in 107 provinces of
122 Italy from the Italian Institute of Statistics from January 1st, 2015 to May 31st, 2020,
123 which covered about 93.1% of the Italian territory and population. The mortality counts
124 were grouped into province-level stratified by sex and age. To compare the effects of
125 temperature on mortality before and during the COVID-19 pandemic, the analysis was

126 restricted to the first three months of the COVID-19 outbreak in Italy in 2020 and the
127 same months during 2015-2019, respectively.

128

129 We collected the hourly ambient temperature (at 2 meters above the land surface) and
130 ambient dew point temperature at $0.1^\circ \times 0.1^\circ$ spatial resolution from the ERA5 dataset
131 (ERA5) (<https://cds.climate.copernicus.eu/cdsapp#!/home>). We aggregated all hourly
132 observations into daily data. This dataset has good temporal and spatial coverage in
133 Italy, but it might be less accurate than observations from weather stations. Thus, we
134 calibrated the ERA5 daily mean temperature and ERA5 daily mean dew point
135 temperature using their relationship with observations of weather stations by building
136 random forest models (see Supplementary materials for detail, Fig. S1-S2). After
137 calibration, the ERA5 daily mean temperature and ERA5 daily mean dew point
138 temperatures were linked to the geographical centre of each of the 7,904 municipalities
139 based on longitude and latitude. We then calculated daily mean relative humidity from
140 the calibrated ERA5 daily mean temperature and ERA5 daily mean dew point
141 temperature using an algorithm provided by the “humidity” R package (Cai 2019).
142 Weather data at municipality level were aggregated into province level by averaging
143 observations of all municipalities within each province. We also collected the daily
144 monitor stations data of particulate matter with diameters less than 2.5 micrometres
145 (PM_{2.5}) from World's Air Quality Index Project and linked values of the nearest monitor
146 station to the centre of each Italian province.

147

148 2.2 Statistics analysis

149 A time-stratified case-crossover design was used to examine the associations between
150 temperature and mortality during the first three months of COVID-19 outbreak and the

151 same pre-outbreak period in 2015-2019, respectively. Conditional quasi-Poisson
152 regression was applied to perform the time-stratified case-crossover design (Armstrong
153 et al. 2014). Time-stratified case-crossover design controls the temporal trends and
154 seasonality through matching case and control in a small time window (e.g., calendar
155 month) (Guo et al. 2011). Specifically, the case and controls were matched by the day
156 of the week in the same calendar month in the same province, to control for the effect
157 of intra-week variation, seasonality, and spatial variation. The association between
158 ambient temperature and risk of death was examined using a distributed lag non-linear
159 model (DLNM) (Gasparrini et al. 2010). We used a natural cubic spline with 3 degrees
160 of freedom for the temperature distribution, and a natural cubic spline with 3 degrees
161 of freedom for lags up to 21 days. We chose a lag of 21 days, as previous studies have
162 shown a long lag effect of cold temperature and harvesting effect of hot temperature
163 (Gasparrini et al. 2015; Guo et al. 2011). The daily relative humidity with the same lag
164 days and PM_{2.5} concentration were included in the model to control their impacts.

165

166 To assess the possible modification effects of demographic factors on the associations
167 between temperature and mortality, stratified analyses were conducted for sex and age
168 groups (<64, 65-74, 75-84, and ≥ 85 years). Our initial analyses show there were only
169 cold effects on mortality (no hot effects). Therefore, the overall cumulative RRs in
170 previous 21 days corresponding to the 2.5th percentile and the 50th percentile of the
171 temperature distribution during the study period against the minimum mortality
172 temperature (MMT) were calculated to show the effects of extreme and moderately
173 cold temperatures, respectively. We set 24°C as MMT (reference value/temperature)
174 based on our initial analyses and a previous study to calculate the relative risks (RRs)
175 (Gasparrini et al. 2015).

176

177 2.3 Sensitivity analysis

178 Sensitivity analyses were performed to examine the robustness of the results. We tested
179 the variation of the temperature-mortality association during non-outbreak of COVID-
180 19 by replacing the study period of 2015-2019 with every single year of the study period.
181 We modified the lag choices by varying the maximum lags to 18 and 24 days in the
182 DLNM to check any changes in the cold temperature-mortality associations.

183

184 All analyses were performed with R software (version 3.5.2). The ‘dlnm’ and ‘gnm’
185 packages were used to fit the DLNM and the conditional Poisson regression,
186 respectively.

187

188 3. Results

189 There were 1,000,459 all-cause deaths from March 1st to May 31st during 2015-2020 in
190 Italy. Table 1 shows the comparison of descriptive statistics between the COVID-19
191 pandemic period in 2020 and the same months during 2015-2019. The study months in
192 the pandemic period in Italy witnessed a slight increase in the ambient temperature
193 ($P < 0.001$) with the average value of 12.5 ± 4.4 °C compared with the same months
194 during 2015-2019 (12.3 ± 4.3 °C). In addition, the relative humidity and PM_{2.5} in the
195 pandemic period were significantly lower than the same months during 2015-2019. As
196 for the comparison of the daily average all-cause mortality counts in different age
197 groups, all age groups displayed statistical higher counts in 2020 than the number in
198 2015-2019, except for the 0-64 age group. The death counts in the pandemic period
199 experienced a significantly high number in male and female groups.

200

201 Table 1 Descriptive statistics for temperature, relative humidity, PM_{2.5}, and daily death
202 counts during COVID-19 pandemic in 2020 and the same months during 2015-2019.

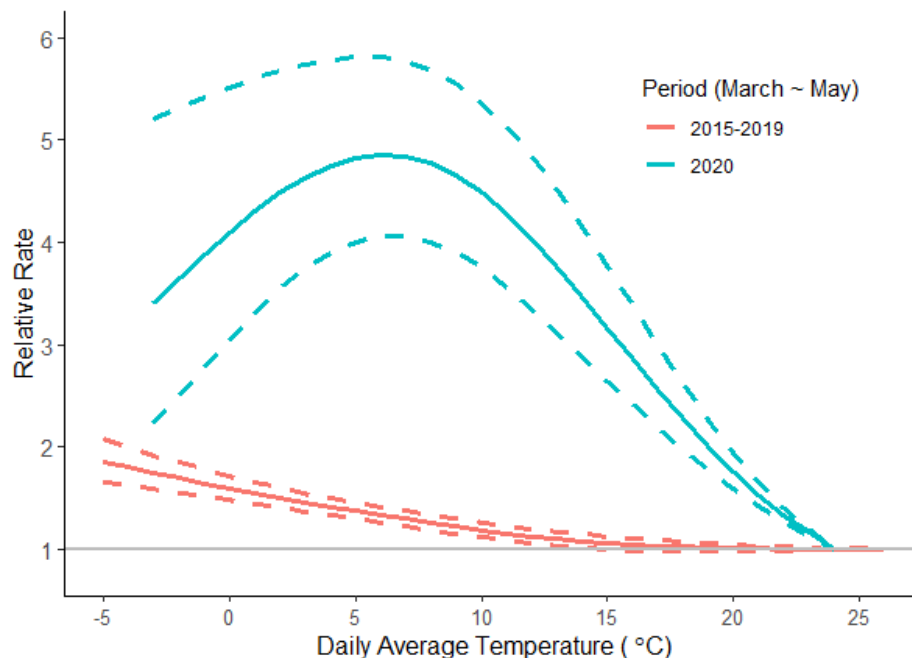
Characteristics	2015-2019		2020		<i>p</i> - Value
	Mean	SD	Mean	SD	
Temperature (°C)	12.35	4.29	12.52	4.40	<0.001
Relative Humidity (%)	68.80	11.15	65.41	12.08	<0.001
PM _{2.5} (µg/m ³)	16.56	13.01	13.86	9.96	<0.001
Daily Average Mortality counts					
0-64 years	192	17	196	37	0.097
65-74 years	235	21	285	84	<0.001
75-84 years	519	45	634	204	<0.001
≥ 85 years	802	78	1021	277	<0.001
Female	911	80	1093	271	<0.001
Male	837	62	1043	325	<0.001
Total	1748	135	2136	590	<0.001

203 Note: 2020: the pandemic period from March 1st to May 31st 2020; 2015-2019: the
204 normal period from March 1st to May 31st for 2015-2019; SD: Standard deviation;
205 PM_{2.5}: particulate matter with diameters less than 2.5 micrometres; Daily temperature
206 and relative humidity were calculated with the 24h average values; p-Value was
207 calculated with independent Two-Sample t-Test.

208

209 Figure 1 shows overall cumulative exposure-response associations for the pandemic
210 period in 2020 and the same pre-outbreak period in 2015-2019, referring to the MMT
211 of 24°C. Generally, there were only cold effects on mortality for both 2020 COVID-19

212 pandemic and the same months during 2015-2019. The risks of excess mortality
213 associated with cold temperatures in the pandemic period were significantly higher than
214 that in the 2015-2019 period. A similar trend can be found in sex and age groups (Figure
215 2). There were similar temperature-mortality curves for males and females. As for the
216 age-specific temperature-mortality association, except for the 0-64 age group, the other
217 three older age groups experienced a significantly higher risk of death in the pandemic
218 period than 2015-2019.
219



220
221 Fig. 1 Cumulative temperature–mortality associations along 21 lag days in 2020
222 COVID-19 pandemic and the same months during 2015-2019.

223
224 The cumulative RR of all-cause mortality associated with extreme cold (2.5th percentile
225 of temperature at 3 °C) in comparison with the MMT (24 °C) was 4.75 (95%CI: 3.90-
226 5.79) in the pandemic period, which is more than three times higher than the 2015-2019
227 period with RR of 1.41 (95%CI: 1.33-1.50). With regards to the association of mortality

228 in moderately cold temperature (50th percentile of temperature at 14°C), Italy had a
 229 cumulative RR of 3.75 (95%CI: 3.12-4.52) in the pandemic period compared with that
 230 in the non-pandemic period with an RR of 1.10 (95%CI: 1.03-1.17). When compared
 231 the risks at extreme and moderately cold temperatures in specific-age groups in the
 232 pandemic period, the 65-74 age group reported significantly higher risks than the other
 233 three groups at extreme and moderately cold temperatures in the pandemic, while the
 234 0-64 age group showed the similar RR values at these two temperatures (Table 2).

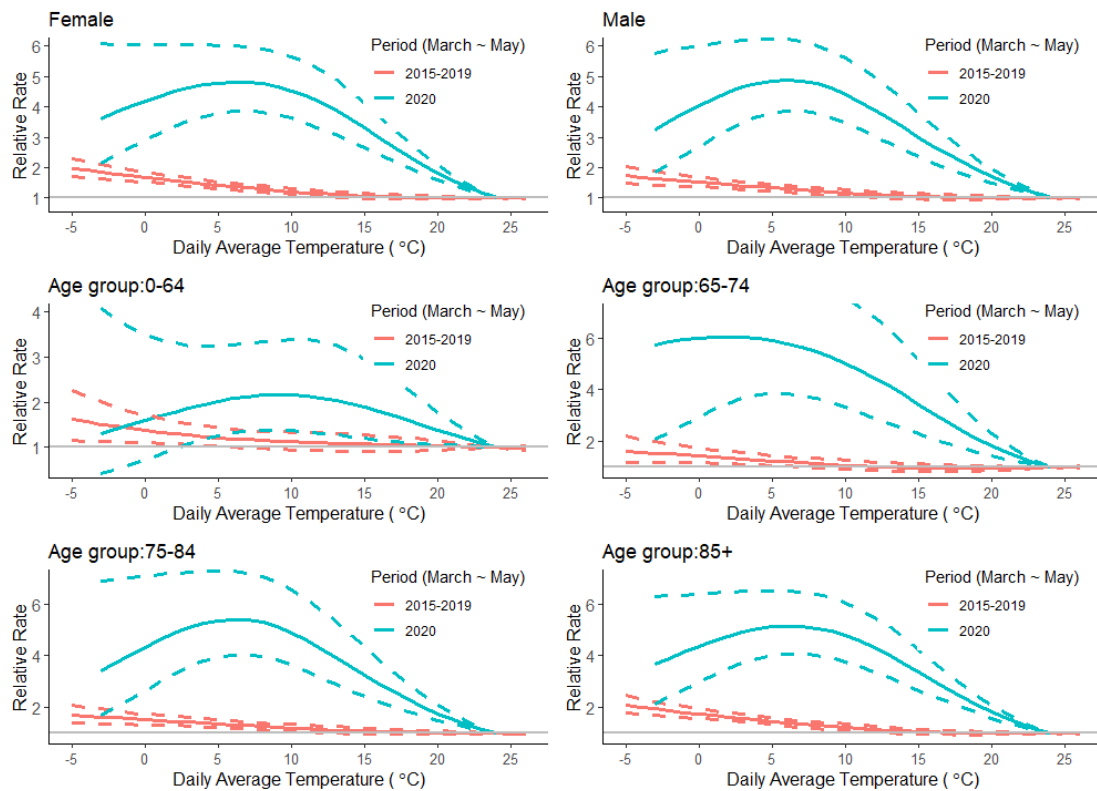
235

236 Table 2. Relationship between temperature and mortality at extreme and moderately
 237 cold temperatures.

Sex/age	Extreme Cold				Moderately Cold			
	2015-2019		2020		2015-2019		2020	
	RR	95% CI	RR	95% CI	RR	95% CI	RR	95% CI
0-64 years	1.24	(1.05, 1.48)	1.95	(1.17, 3.24)	1.10	(0.92, 1.31)	2.04	(1.28, 3.26)
65-74 years	1.29	(1.10, 1.51)	5.98	(3.78, 9.46)	1.00	(0.85, 1.18)	4.12	(2.70, 6.31)
75-84 years	1.40	(1.25, 1.56)	5.25	(3.79, 7.26)	1.13	(1.01, 1.26)	3.94	(2.90, 5.34)
≥ 85 years	1.52	(1.39, 1.66)	5.03	(3.90, 6.51)	1.12	(1.02, 1.29)	4.01	(3.14, 5.11)
Female	1.47	(1.35, 1.59)	4.72	(3.69, 6.03)	1.11	(1.02, 1.21)	3.89	(3.09, 4.90)
Male	1.36	(1.25, 1.48)	4.78	(3.67, 6.22)	1.09	(0.99, 1.19)	3.59	(2.80, 4.60)
Total	1.41	(1.33, 1.50)	4.75	(3.90, 5.79)	1.10	(1.03, 1.17)	3.75	(3.12, 4.52)

238 Extreme Cold: the 2.5th percentile of the temperature (3 °C); Moderately Cold: the 50th
 239 percentile of the temperature (14 °C); RR: overall cumulative relative risk of death in
 240 previous 21 days, compared with the minimum mortality temperature of 24°C; 95% CI:
 241 The 95% Confidence Interval. 2020: the pandemic period from March 1st to May 31st,
 242 2020; 2015-2019: the normal period from March 1st to May 31st for each year.

243



244

245 Fig. 2 Cumulative exposure–response associations along 21 lag days stratified by sex
246 and age in the pandemic (2020) and the non-pandemic period (2015-2019).

247

248 As for the results of sensitivity analysis, the distribution of the temperatures in the same
249 period of 2015-2020 was similar, except for a slightly low temperature in the year 2019
250 (Table S1). We replaced the study period of 2015-2019 with every single year from
251 2015 to 2019 to examine the stability of the association between temperature and all-
252 cause mortality in the period with no pandemic, which gave similar results (Fig. S3).
253 Additionally, we changed the maximum lags days to 18 and 24 days in our model, and
254 it did not modify the results (Fig. S4). Consequently, we believe that our models
255 adequately captured the main effects of temperature on mortality.

256

257 4. Discussion

258 To the best of our knowledge, our study is the first to investigate the cold-related excess

259 mortality during the COVID-19 pandemic period in Italy, even in the world. The
260 findings indicated that Italy experienced a higher cold-related excess mortality during
261 the pandemic in comparison to the equivalent time in 2015-2019. The mortality risks
262 associated with cold temperatures observed during the pandemic were more than triple
263 higher than risks noted in 2015-2019 at both extreme and moderately cold temperatures.
264 Furthermore, risks in individuals with 0-64 year of age displayed a non-significant
265 difference in the pandemic and non-pandemic periods. However, people aged ≥ 65
266 years old were more susceptible to the adverse effects of cold temperature than those
267 < 65 years old during the pandemic.

268

269 It is well-documented that cold temperature is responsible for the excess mortality (Guo
270 et al. 2016b; Schwartz et al. 2015; Vardoulakis et al. 2014). For example, a quantitative
271 systematic review estimated that cold exposure was associated with an elevated risk of
272 cardiovascular and respiratory mortality (Bunker et al. 2016). Our results for the non-
273 pandemic period are consistent with a previous multi-country epidemiological study
274 (Gasparrini et al. 2015), in which it assessed the all-cause mortality risk attributed to
275 ambient temperature in Italian 11 cities from 1987 to 2010 and observed a slightly low
276 cold-related mortality, with an RR of 1.09 in cold temperature. However, the results
277 could not be directly compared due to the different study period.

278

279 Various potential biological mechanisms for the effect of cold temperature on the
280 increased mortality risks have been presented, mainly for cardiovascular and
281 respiratory effects (Song et al. 2017). In the case of the association of cold temperature
282 with cardiovascular mortality, cold exposure could increase the angiotensin-II levels in
283 plasma, platelet and red cell counts, blood viscosity, and arterial pressure, which would

284 lead to increased blood pressure and the elevated risks of hypertension and
285 cardiovascular diseases (Analitis et al. 2008; Keatinge et al. 1984). The mechanisms
286 behind the respiratory effects may be associated with the effect of cold temperature on
287 the reduction of respiratory defences against infection and other immunological
288 reactions (Eccles 2002). Meanwhile, the cold temperature could affect the transmission
289 of viruses and enhance the rates of respiratory virus infection (Pica and Bouvier 2014).

290

291 Our results show that more than three times higher cold-related excess mortality during
292 2020 COVID-19 pandemic than the same months during 2015-2019. Even though the
293 potential drivers for such change cannot be directly derived, a multitude of underlying
294 factors are linked to the variation of the cold-mortality association in the pandemic
295 period. Firstly, the contributions of COVID-19 deaths to the cold-related excess
296 mortality need to be taken into account. According to a recent report, in the first 5
297 months of 2020 (with the 191,228 total deaths in Italy), 31,763 (16.6%) was of subjects
298 with swab positive for COVID-19, but the mortality contribution varied by different
299 prevalence locations ranging from 28% in high prevalence to 3% in low-prevalence
300 provinces (National Statistical Institute (Istat) and the InstituteSuperiore di Sanità (Iss)
301 2020). It is noted that the role of ambient temperature in the spread of COVID-19, so
302 far, is not well understood. Obviously, the virus could not subside with the warming of
303 temperature in the world. However, the impact of cold air temperature on COVID-19
304 is more convincing. Several laboratory experiments have suggested lower temperatures
305 are associated with increased survival of the virus (Casanova et al. 2010). Sajadi and
306 colleagues concluded that the early spread of COVID-19 was consistent with the
307 behavior of a seasonal respiratory by examining the global spread of the COVID-19
308 (Sajadi et al. 2020). Many recent investigations also demonstrated a positive association

309 between cold temperature and COVID-19 risk. For example, an epidemiologic study
310 with 122 Chinese cities estimated a positive association with a 4.86% increase in the
311 daily number of COVID-19 confirmed cases for each 1 °C rise when temperatures
312 below 3 °C (Xie and Zhu 2020).

313

314 In addition, another possible explanation for the association change in the pandemic
315 period could be the adaptation of societies to cold temperature (Gasparrini et al. 2017;
316 Schwartz et al. 2015). Specifically, the variation of temperature-mortality association
317 mainly depends on the combination of two pathways: an intrinsic adaptation by a
318 physiological acclimatisation response, and the extrinsic adaptation due to non-climate
319 driven factors such as socioeconomic and demographic conditions and public health
320 services (Achebak et al. 2020; Vicedo-Cabrera et al. 2018). Especially for the early
321 days of the COVID-19 outbreak, extrinsic factors such as the health-care resource
322 availability could play an important role in the change of the vulnerability. The rapid
323 surge of COVID-19 cases has posed a serious threat to the Italian national health system
324 (Remuzzi and Remuzzi 2020). Because of the lack of medical resources (Ji et al. 2020)
325 and reorganization of the health care systems to the enormous increase in acutely
326 COVID-19 patients, some patients died at home while awaiting admission (Emanuel et
327 al. 2020), which might be caused by cold temperatures (Achebak et al. 2019; Yang et
328 al. 2017). For example, there was a significant decrease in the rate of hospital admission
329 for acute coronary syndrome and acute myocardial infarction during the early stage of
330 the COVID-19 outbreak in Italy (De Filippo et al. 2020; De Rosa et al. 2020).

331

332 On the other hand, further important consideration is that the adverse psychosocial
333 effects of pandemics (Guessoum et al. 2020) may be related to the individuals' intrinsic

334 physiological and psychological vulnerability to cold temperature. For example,
335 research revealed that social exclusion could make people feel cold (Zhong and
336 Leonardelli 2008). Several studies also observed that ambient temperatures are
337 associated with the increase in emergency department visits for mental illness, suicides,
338 and self-reported days of poor mental health (Mullins and White 2019; Xue et al. 2019).
339 Restrictive social containment measures (including stay-at-home orders, quarantine,
340 and isolation) may exacerbate the adverse psychological outcomes and mental disorders,
341 resulting in excess cold-related mortality (Pfefferbaum and North 2020).

342

343 We also investigated the discrepancy effects by sex and age groups in the pandemic.
344 The difference in temperature-related mortality between sex and age groups may be
345 largely driven by a thermoregulatory pathway. Some studies suggested that men have
346 larger decreases in core body temperature when exposed to cold, and thus are more
347 susceptible to cold than women, whereas other studies reported the opposite (Achebak
348 et al. 2019; Moghadamnia et al. 2017). The ability to maintain body temperature for
349 males and females may differ with health and socioeconomic conditions
350 (Moghadamnia et al. 2017). With regards to the age-specific differences in
351 thermoregulatory during exposure to cold temperature, older people generally respond
352 with reduced peripheral vasoconstriction and decreased metabolic heat production in
353 comparison with younger individuals (Achebak et al. 2019; Stocks et al. 2004).
354 Additionally, multiple factors other than physiological mechanisms could explain the
355 discrepancies in pandemic cold-related mortality between different age groups. One
356 possible explanation for the pronounced gap in the RRs between the 65-74 age group
357 and other older groups is the health-related behaviours. For example, the older
358 individuals may be more concerned about their vulnerability of COVID-19 infection

359 and are more willing to conduct personal protection measures such as wearing masks
360 and staying indoors and thus avoid direct to cold exposures and infectious diseases.

361

362 There are some limitations in this study. First, we did not include the analysis of the
363 disease-specific mortality because the data was not available. Therefore, we did not
364 know the extent of the temperature impact on certain disease-specific mortality in the
365 pandemic. An additional limitation is that this is an ecological study without individual
366 data. Therefore, exposure misclassification is a potential concern. For example, the
367 aggregated ambient temperature at a province-level does not necessarily remain
368 consistent for individuals, specifically for people who may reduce the cold exposure
369 because of keeping the stay-at-home orders during the pandemic. Furthermore, we were
370 unable to make any inference in terms of the possible mechanism pathways governing
371 the association between cold exposure and excess mortality in the pandemic.

372

373 In conclusion, our findings suggest that COVID-19 pandemic increased the impacts of
374 cold temperatures on mortality in Italy. This means that using the historical exposure-
375 response relationship between temperature and mortality may underestimate the health
376 impacts of cold temperatures during the COVID-19 pandemic. To date, no sign shows
377 the end of the COVID-19 pandemic before the widespread use of vaccines. Some
378 restrictive social containment measures may continually affect our life and behaviour
379 in the foreseeable future. Therefore, we would expect our findings enable public health
380 agencies to take early actions such as making preparedness for indoor temperature
381 control, developing early cold warning systems, and giving special attention to the
382 vulnerable group, to avoid the unexpected cold-related excess mortality in the next
383 coming winter.

384 Reference

- 385 Achebak H, Devolder D, Ballester J. 2019. Trends in temperature-related age-specific and
386 sex-specific mortality from cardiovascular diseases in Spain: A national time-series
387 analysis. *The Lancet Planetary Health* 3:e297-e306.
- 388 Achebak H, Devolder D, Ingole V, Ballester J. 2020. Reversal of the seasonality of
389 temperature-attributable mortality from respiratory diseases in Spain. *Nature*
390 *communications* 11:1-9.
- 391 Analitis A, Katsouyanni K, Biggeri A, Baccini M, Forsberg B, Bisanti L, et al. 2008. Effects of
392 cold weather on mortality: Results from 15 European cities within the Pheweb project.
393 *American journal of epidemiology* 168:1397-1408.
- 394 Armstrong BG, Gasparrini A, Tobias A. 2014. Conditional Poisson models: A flexible
395 alternative to conditional logistic case cross-over analysis. *BMC medical research*
396 *methodology* 14:122.
- 397 Baldi E, Sechi GM, Mare C, Canevari F, Brancaglione A, Primi R, et al. 2020. Out-of-hospital
398 cardiac arrest during the COVID-19 outbreak in Italy. *New England Journal of Medicine*.
- 399 Banerjee A, Pasea L, Harris S, Gonzalez-Izquierdo A, Torralbo A, Shallcross L, et al. 2020.
400 Estimating excess 1-year mortality associated with the COVID-19 pandemic according to
401 underlying conditions and age: A population-based cohort study. *The Lancet*.
- 402 Baum A, Schwartz MD. 2020. Admissions to Veterans Affairs hospitals for emergency
403 conditions during the COVID-19 pandemic. *JAMA*.
- 404 Bedford J, Enria D, Giesecke J, Heymann DL, Ihekweazu C, Kobinger G, et al. 2020. COVID-
405 19: Towards controlling of a pandemic. *The Lancet* 395:1015-1018.
- 406 Briz-Redón Á, Serrano-Aroca Á. 2020. A spatio-temporal analysis for exploring the effect
407 of temperature on COVID-19 early evolution in Spain. *Science of the Total*
408 *Environment*:138811.
- 409 Bunker A, Wildenhain J, Vandenberg A, Henschke N, Rocklöv J, Hajat S, et al. 2016.
410 Effects of air temperature on climate-sensitive mortality and morbidity outcomes in the
411 elderly; a systematic review and meta-analysis of epidemiological evidence. *EBioMedicine*
412 6:258-268.
- 413 Cai J. 2019. Humidity: Calculate water vapor measures from temperature and dew point.
414 Available: <https://cran.r-project.org/web/packages/humidity/index.html>.
- 415 Carder M, McNamee R, Beverland I, Elton R, Cohen G, Boyd J, et al. 2005. The lagged
416 effect of cold temperature and wind chill on cardiorespiratory mortality in Scotland.
417 *Occupational and environmental medicine* 62:702-710.
- 418 Casanova LM, Jeon S, Rutala WA, Weber DJ, Sobsey MD. 2010. Effects of air temperature
419 and relative humidity on coronavirus survival on surfaces. *Applied and environmental*
420 *microbiology* 76:2712-2717.
- 421 De Filippo O, D'Ascenzo F, Angelini F, Bocchino PP, Conrotto F, Saglietto A, et al. 2020.
422 Reduced rate of hospital admissions for ACS during COVID-19 outbreak in northern Italy.
423 *New England Journal of Medicine*.
- 424 De Rosa S, Spaccarotella C, Basso C, Calabrò MP, Curcio A, Filardi PP, et al. 2020.
425 Reduction of hospitalizations for myocardial infarction in Italy in the COVID-19 era.
426 *European heart journal* 41:2083-2088.
- 427 Eccles R. 2002. An explanation for the seasonality of acute upper respiratory tract viral
428 infections. *Acta oto-laryngologica* 122:183-191.

429 Emanuel EJ, Persad G, Upshur R, Thome B, Parker M, Glickman A, et al. 2020. Fair
430 allocation of scarce medical resources in the time of covid-19. *Mass Medical Soc.*

431 Gasparrini A, Armstrong B, Kenward MG. 2010. Distributed lag non-linear models.
432 *Statistics in medicine* 29:2224-2234.

433 Gasparrini A, Guo Y, Hashizume M, Lavigne E, Zanobetti A, Schwartz J, et al. 2015.
434 Mortality risk attributable to high and low ambient temperature: A multicountry
435 observational study. *The Lancet* 386:369-375.

436 Gasparrini A, Guo Y, Sera F, Vicedo-Cabrera AM, Huber V, Tong S, et al. 2017. Projections
437 of temperature-related excess mortality under climate change scenarios. *The Lancet*
438 *Planetary Health* 1:e360-e367.

439 Gill JR, DeJoseph ME. 2020. The importance of proper death certification during the
440 covid-19 pandemic. *JAMA*.

441 Guessoum SB, Lachal J, Radjack R, Carretier E, Minassian S, Benoit L, et al. 2020.
442 Adolescent psychiatric disorders during the covid-19 pandemic and lockdown. *Psychiatry*
443 *research*:113264.

444 Guo Y, Barnett AG, Pan X, Yu W, Tong S. 2011. The impact of temperature on mortality
445 in tianjin, china: A case-crossover design with a distributed lag nonlinear model.
446 *Environmental health perspectives* 119:1719-1725.

447 Guo Y, Li S, Zhang Y, Armstrong B, Jaakkola JJ, Tong S, et al. 2013. Extremely cold and
448 hot temperatures increase the risk of ischaemic heart disease mortality: Epidemiological
449 evidence from china. *Heart* 99:195-203.

450 Guo Y, Gasparrini A, Armstrong B, Li S, Tawatsupa B, Tobias A, et al. 2014. Global variation
451 in the effects of ambient temperature on mortality: A systematic evaluation. *Epidemiology*
452 *(Cambridge, Mass)* 25:781.

453 Guo Y, Gasparrini A, Armstrong BG, Tawatsupa B, Tobias A, Lavigne E, et al. 2016a.
454 Temperature variability and mortality: A multi-country study. *Environmental health*
455 *perspectives* 124:1554-1559.

456 Guo Y, Li S, Li Liu D, Chen D, Williams G, Tong S. 2016b. Projecting future temperature-
457 related mortality in three largest australian cities. *Environmental pollution* 208:66-73.

458 Ji Y, Ma Z, Peppelenbosch MP, Pan Q. 2020. Potential association between covid-19
459 mortality and health-care resource availability. *The Lancet Global Health* 8:e480.

460 Keatinge W, Coleshaw S, Cotter F, Mattock M, Murphy M, Chelliah R. 1984. Increases in
461 platelet and red cell counts, blood viscosity, and arterial pressure during mild surface
462 cooling: Factors in mortality from coronary and cerebral thrombosis in winter. *Br Med J*
463 *(Clin Res Ed)* 289:1405-1408.

464 Ma Y, Zhao Y, Liu J, He X, Wang B, Fu S, et al. 2020. Effects of temperature variation and
465 humidity on the death of covid-19 in wuhan, china. *Science of The Total*
466 *Environment*:138226.

467 Marijon E, Karam N, Jost D, Perrot D, Frattini B, Derkenne C, et al. 2020. Out-of-hospital
468 cardiac arrest during the covid-19 pandemic in paris, france: A population-based,
469 observational study. *The Lancet Public Health*.

470 Moghadamnia MT, Ardalan A, Mesdaghinia A, Keshtkar A, Naddafi K, Yekaninejad MS.
471 2017. Ambient temperature and cardiovascular mortality: A systematic review and meta-
472 analysis. *PeerJ* 5:e3574.

473 Mullins JT, White C. 2019. Temperature and mental health: Evidence from the spectrum
474 of mental health outcomes. *Journal of health economics* 68:102240.

- 475 National Statistical Institute (Istat) and the Institute Superiore di Sanità (Iss). 2020. Impact
476 of the covid-19 epidemic on total mortality of resident population period january-may
477 2020. Available: <https://www.istat.it/it/archivio/245573>.
- 478 Pfefferbaum B, North CS. 2020. Mental health and the covid-19 pandemic. *New England*
479 *Journal of Medicine*.
- 480 Pica N, Bouvier NM. 2014. Ambient temperature and respiratory virus infection. *The*
481 *Pediatric infectious disease journal* 33:311-313.
- 482 Prem K, Liu Y, Russell TW, Kucharski AJ, Eggo RM, Davies N, et al. 2020. The effect of
483 control strategies to reduce social mixing on outcomes of the covid-19 epidemic in
484 wuhan, china: A modelling study. *The Lancet Public Health*.
- 485 Remuzzi A, Remuzzi G. 2020. Covid-19 and italy: What next? *The Lancet*.
- 486 Rosenbaum L. 2020. The untold toll—the pandemic's effects on patients without covid-
487 19. *New England Journal of Medicine:Mass Medical Soc*.
- 488 Ryti NR, Guo Y, Jaakkola JJ. 2016. Global association of cold spells and adverse health
489 effects: A systematic review and meta-analysis. *Environmental health perspectives*
490 124:12-22.
- 491 Sajadi MM, Habibzadeh P, Vintzileos A, Shokouhi S, Miralles-Wilhelm F, Amoroso A. 2020.
492 Temperature, humidity, and latitude analysis to estimate potential spread and seasonality
493 of coronavirus disease 2019 (covid-19). *JAMA Network Open* 3:e2011834-e2011834.
- 494 Schwartz JD, Lee M, Kinney PL, Yang S, Mills D, Sarofim MC, et al. 2015. Projections of
495 temperature-attributable premature deaths in 209 us cities using a cluster-based poisson
496 approach. *Environmental Health* 14:85.
- 497 Song X, Wang S, Hu Y, Yue M, Zhang T, Liu Y, et al. 2017. Impact of ambient temperature
498 on morbidity and mortality: An overview of reviews. *Science of the Total Environment*
499 586:241-254.
- 500 Stocks JM, Taylor NA, Tipton MJ, Greenleaf JE. 2004. Human physiological responses to
501 cold exposure. *Aviation, space, and environmental medicine* 75:444-457.
- 502 Vardoulakis S, Dear K, Hajat S, Heaviside C, Eggen B, McMichael AJ. 2014. Comparative
503 assessment of the effects of climate change on heat-and cold-related mortality in the
504 united kingdom and australia. *Environmental health perspectives* 122:1285-1292.
- 505 Vicedo-Cabrera AM, Sera F, Guo Y, Chung Y, Arbuthnott K, Tong S, et al. 2018. A multi-
506 country analysis on potential adaptive mechanisms to cold and heat in a changing climate.
507 *Environment international* 111:239-246.
- 508 Wang H, Zhang L. 2020. Risk of covid-19 for patients with cancer. *The Lancet Oncology*
509 21:e181.
- 510 Wang X, Lei SM, Le S, Yang Y, Zhang B, Yao W, et al. 2020. Bidirectional influence of the
511 covid-19 pandemic lockdowns on health behaviors and quality of life among chinese
512 adults. *International Journal of Environmental Research and Public Health* 17:5575.
- 513 Weinberger DM, Chen J, Cohen T, Crawford FW, Mostashari F, Olson D, et al. 2020.
514 Estimation of excess deaths associated with the covid-19 pandemic in the united states,
515 march to may 2020. *JAMA Internal Medicine*.
- 516 Xie J, Zhu Y. 2020. Association between ambient temperature and covid-19 infection in
517 122 cities from china. *Science of The Total Environment* 724:138201.
- 518 Xue T, Zhu T, Zheng Y, Zhang Q. 2019. Declines in mental health associated with air
519 pollution and temperature variability in china. *Nature communications* 10:1-8.
- 520 Yang J, Zhou M, Ou C-Q, Yin P, Li M, Tong S, et al. 2017. Seasonal variations of

521 temperature-related mortality burden from cardiovascular disease and myocardial
522 infarction in china. *Environmental Pollution* 224:400-406.
523 Yao Y, Pan J, Liu Z, Meng X, Wang W, Kan H, et al. 2020. No association of covid-19
524 transmission with temperature or uv radiation in chinese cities. *European Respiratory*
525 *Journal* 55.
526 Zhao Q, Li S, Coelho MS, Saldiva PH, Hu K, Arblaster JM, et al. 2019a. Geographic,
527 demographic, and temporal variations in the association between heat exposure and
528 hospitalization in brazil: A nationwide study between 2000 and 2015. *Environmental*
529 *health perspectives* 127:017001.
530 Zhao Q, Li S, Coelho MS, Saldiva PH, Hu K, Huxley RR, et al. 2019b. The association
531 between heatwaves and risk of hospitalization in brazil: A nationwide time series study
532 between 2000 and 2015. *PLoS medicine* 16:e1002753.
533 Zhong C-B, Leonardelli GJ. 2008. Cold and lonely: Does social exclusion literally feel cold?
534 *Psychological Science* 19:838-842.
535 Zylke JW, Bauchner H. 2020. Mortality and morbidity: The measure of a pandemic. *JAMA*.
536