

1 **Validated ICP-MS method for measurement of plasma and intracellular antimony**
2 **concentrations applied to pharmacokinetics of meglumine antimoniate**

3
4 Diana J. Garay-Baquero^{1,2} David E. Rebellon-Sánchez¹, Miguel D. Prieto¹, Lina Giraldo-Parra^{1,4},
5 Adriana Navas¹, Sheryl Atkinson³, Stuart McDougall^{3#}, Maria Adelaida Gómez^{1,4#}

6
7 ^{1.} Centro Internacional de Entrenamiento e Investigaciones Médicas, CIDEIM, Carrera 125 No.
8 19 – 225 Cali, Colombia.

9 ^{2.} Clinical and Experimental Sciences, Faculty of Medicine, University of Southampton, General
10 Hospital Southampton, SO16 6YD, Southampton, UK

11 ^{3.} Arcinova, Alnwick, NE66 2DH, Northumberland, UK

12 ^{4.} Universidad ICESI, Cali, Colombia.
13

14 Running title: ICP-MS for measurement of plasma and intracellular antimony

15
16 # Co-corresponding authors:

17 Maria Adelaida Gomez

18 Tel: +57 (2) 5552164.

19 Fax: +57(2) 5552638

20 E-mail address: mgomez@cideim.org.co

21 Stuart McDougall

22 Tel: +44 (1) 665 608405

23 E-mail address: stuart.mcdougall@arcinova.com
24

25 Keywords: ICP-MS, meglumine antimoniate, antimony, leishmaniasis

26 The authors confirm that the Principal Scientific Investigator for this paper was Maria Adelaida
27 Gómez and that the Principal Medical Investigator was Miguel Dario Prieto and that he had direct
28 clinical responsibility for patients.

32 **What is already known about this subject**

- 33 • Antimonial drugs are the mainstay treatment for cutaneous leishmaniasis of which
34 systemically administered pentavalent antimonials (SbV) are widely used, however the
35 pharmacokinetics (PK) of these drugs at the site of action is unknown.
- 36 • A wide range of analytical strategies have been used to quantify antimony in biological
37 samples and atomic absorption spectroscopy is the most employed technique, however, no
38 standardized methods for determination of intracellular concentrations of antimony were
39 available.
- 40 • Relationships between plasma and intracellular drug concentrations remain unknown for
41 most antiparasitic drugs, and PK studies rely on plasma drug concentrations assuming these
42 act as surrogates of intracellular concentrations.

44 **What this study adds**

- 45 • We have developed and validated a reproducible and accurate ICP-MS method for the
46 quantification of total antimony in human plasma and peripheral blood mononuclear cells
47 (PBMCs) in accordance with the European Bioanalysis Forum (EBF) recommendations.
- 48 • This method was successfully used to compare pharmacokinetic curves of antimony in
49 plasma and intracellular compartments, in samples collected from patients undergoing
50 treatment for cutaneous leishmaniasis with meglumine antimoniate.

51

52 **ABSTRACT**

53 **Aim**

54 A high-throughput method using inductively coupled plasma mass spectrometry (ICP-MS) was
55 developed and validated for the quantitative analysis of antimony in human plasma and peripheral
56 blood mononuclear cells (PBMCs) from patients with cutaneous leishmaniasis undergoing treatment
57 with meglumine antimoniate.

58 **Methods**

59 For this study, antimony was digested in clinical samples with 1% TMAH / 1% EDTA and indium
60 was used as internal standard. Calibration curves for antimony, over the range of 25 to 10000 ng/mL
61 were fitted to a linear model using a weighting of $1/\text{concentration}^2$. Accuracy, precision and stability
62 were evaluated.

63 **Results**

64 Taking the lower limit of quantitation (LLOQ) to be the lowest validation concentration with
65 precision and accuracy within 20% (25% at the LLOQ), the current assay was successfully validated
66 from 25 to 10000 ng/mL for antimony in human plasma and PBMCs. Dilution studies demonstrated
67 that concentrations up to 100000 ng/mL of antimony in plasma were reliably analyzed when diluted
68 into the calibration range.

69 **Conclusion**

70 This protocol will serve as a baseline for future analytical designs, aiming to provide a reference
71 method to allow inter-study comparisons.

72

73

74

75

76 INTRODUCTION

77 Leishmaniasis is a group of diseases caused by protozoan parasites of the genus *Leishmania*, which
78 can cause cutaneous, mucosal or visceral manifestations depending on the infecting species and the
79 host immune status ^{1,2}. According to the most recent report from the World Health Organization
80 (WHO), leishmaniasis is endemic across all continents. Despite an elevated proportion of suspected
81 underreporting, 700000 to over 1200000 new cases are estimated to occur annually ^{2,3}.

82 *Leishmania* is an intracellular parasite that invades and replicates predominantly within phagocytic
83 cells (primarily macrophages), providing a “protected” environment against host defenses and a
84 barrier to drug exposure. Antimonial drugs are the mainstay treatment for cutaneous leishmaniasis of
85 which systemically administered pentavalent antimonials (Sb^V) are widely used in the Americas and
86 as intradermal injections in the Old World ⁴. Sodium stibogluconate (Pentostam®) and meglumine
87 antimoniate (Glucantime®) are the synthetic compounds used for pentavalent antimonial therapy.
88 Their efficacy is highly variable, according to the infecting species, parasite subpopulations, host
89 responses and therapeutic regimens ⁵⁻⁷. Antileishmanial drugs need to be distributed to the parasite-
90 targeted tissues (primarily skin, liver, spleen and bone marrow depending on the infecting species),
91 internalized into host cells and distributed to the phagolysosomal compartment where the parasite
92 resides ⁸. Although antimonials have been used over decades, the pharmacokinetics (PK) and
93 pharmacodynamics (PD) of these drugs are not completely understood ^{9,10}. Few studies have
94 described antimonial PK in the context of human leishmaniasis ^{11,12} and the plasma and intracellular
95 PK parameters involved in the therapeutic response remain unknown.

96 Atomic absorption spectrometry is the most common method used to quantitatively determine
97 antimony levels in biological specimens such as blood and urine from patients undergoing antimonial
98 therapy in pharmacokinetic studies ^{11,13}. Although, a validated analytical method for quantification of
99 arsenic and antimony in liposomes was previously developed using inductively coupled plasma-
100 optical emission spectrometry ¹⁴, there is not a validated method available for intracellular antimony
101 determination. Inductively coupled plasma mass spectrometry (ICP-MS) is an ultrasensitive and
102 selective method that allows quantification levels in the order of parts per trillion, with a wide
103 dynamic range of nine orders of magnitude and high throughput ¹⁵. Interferences are relatively low
104 and matrix effects can be minimized by using internal standard controls ^{16,17}. ICP-MS has been widely
105 used in pharmacokinetic studies in humans of metal-based formulations such as arsenic, gadolinium,
106 and some antineoplastic drugs ¹⁸⁻²². Its convenience and reduced time-consumption make this
107 technique a powerful tool for quantitative determination of antimony in clinical samples at
108 intracellular levels.

109 In this study, we present a scientifically validated analytical protocol for determination of total
110 antimony in human plasma and peripheral blood mononuclear cells from patients with cutaneous
111 leishmaniasis undergoing treatment with meglumine antimoniate (Figure 1).

112 <Figure 1>

113

114

115 **METHODS**

116 **Reagents**

117 ICP grade antimony (Batches 884136D and BCBP51619V) and indium (Batch 833920k) were
118 obtained from Alfa Aesar (Heysham, UK) and Sigma Aldrich (Buchs, Switzerland). Electronic grade
119 tetramethylammonium Hydroxide (TMAH) was purchased from Alfa Aesar and
120 ethylenediaminetetraacetic acid (EDTA) from (Sigma). Human plasma for validation studies was
121 obtained from Biochemed (Winchester, USA). High purity (>99.999%) argon gas (BOC Gases, UK)
122 was used for ICP-MS analysis. ASTM Type I ultra-pure water (>18 M Ω) was provided in-house by
123 an Elga Purelab-Ultra system (Veolia Water Technologies, UK).

124 **Clinical samples and study design**

125 Plasma samples and peripheral blood mononuclear cells (PBMCs) were obtained from EDTA
126 anticoagulated blood from patients with cutaneous leishmaniasis (CL, n=5). All CL patients had
127 parasitological confirmation of infection and were recruited at Centro Internacional de Entrenamiento
128 e Investigaciones médicas (CIDEIM) outpatient clinics in Cali, Colombia. CL patient samples were
129 collected from a cohort study that evaluates the relationship between antileishmanials PK, immune
130 response signatures and clinical responses (CIDEIM IRB Study code CIEIH-1258). The study was
131 reviewed and monitored by CIDEIM ethics committee in accordance with national (resolution 8430,
132 República de Colombia, Ministry of Health, 1993) and international (Declaration of Helsinki and
133 amendments, World Medical Association, Fortaleza, Brasil, October 2013) guidelines.

134 Participants were treated with intramuscular meglumine antimoniate (Glucantime® [81 mg Sb/mL];
135 (Sanofi-Aventis) during 20 days with a dose of 20 mg/kg up to a maximum dose of 1620 mg of Sb(V),
136 equivalent to a 20 mL injection. The median adherence to the indicated regime was 85% (75% -
137 100%). Peripheral blood samples were collected during the last day of treatment at the following
138 time-points: before dose and at 0.5, 1, 1.5, 2, 3, 5, 8, 12 and 24 hours after drug administration. In
139 total, samples from 5 CL patients were included in this study for quantification (Table 1).

140 <Table 1>

141 **Plasma procurement and PBMC isolation**

142 Venous blood was collected in EDTA vacutainer tubes and plasma was prepared by centrifuging 10
143 mL of blood at 1300 x g for 10 minutes at room temperature. An aliquot of 3 mL of plasma was
144 transferred to a fresh tube and centrifuged again under the same conditions. The plasma was
145 transferred to a new tube and stored at -80°C. Remaining plasma and blood cells were gently mixed
146 with PBS to complete 20mL final volume. Blood/PBS mix was carefully layered on top of 10 mL
147 Ficoll-Hypaque 1077 gradient (Sigma) in a 50 mL centrifuge tube and centrifuged at 400 x g for
148 35min at room temperature (RT = 19 – 23 °C). The plasma layer was carefully removed, and the
149 mononuclear cells layer was transferred to a separate centrifuge tube. Cells were washed with at least
150 three volumes of PBS. Cells were subsequently centrifuged at 400 x g for 15 min at RT. Then, the
151 supernatant was discarded and the pellet was resuspended in 200 μ L of 25%TMAH and stored at
152 approximately -80°C until use. This PBMC preparation is referred as PBMC matrix for method
153 development.

154 ICP-MS analysis

155 The analyses were performed in a dedicated ACDP (UK Advisory Committee on Dangerous
156 Pathogens) Class II bio-facility and all sample processing and digestion was performed inside Class
157 I HEPA filtered biosafety cabinets to minimize the risks of contamination. All elemental reference
158 standard preparations (Sb and In) were performed in a separate and dedicated laboratory to further
159 eliminate the potential for sample contamination

160 Instrumentation and system suitability

161 Antimony and indium (internal standard), each have two stable isotopes: ^{121}Sb and ^{123}Sb , and ^{113}In
162 and ^{115}In , respectively. Of these, ^{121}Sb and ^{115}In are most abundant and, therefore, were used to
163 quantify antimony and indium, as internal standard, by ICP-MS.

164 All measurements were performed using an Agilent 7700x series ICP-MS, and used to quantify
165 antimony (mass 121) relative to the indium internal standard (mass 115), following infusion of the
166 sample into the ICP-MS via an integrated sample introduction system (ISIS) and micromist nebulizer.
167 The operating system was the ICP MassHunter, version B.01.03 (Agilent). Operating parameters are
168 listed in Table 2. The regression and quantitation procedures were performed using Watson LIMS
169 version 7.5 SP1 (Thermo Fisher Scientific, USA).

170 <Table 2>

171 Prior to initiating any run on the system, an ICP-MS tune test was performed by analyzing a
172 calibration mix containing cerium, cobalt, lithium, magnesium, thallium and yttrium (10 ppm,
173 Agilent) in Tune mode. The raw counts should exceed 1000 units for each element and the
174 variability (% relative standard deviation, %RSD) should be under 10% for the system to be classified
175 as suitable. Additionally, a system suitability test (SST) was executed by running two antimony
176 dilutions; the low SST solution was 0.5 ng/mL and the high SST solution was 200 ng/mL. These
177 dilutions were prepared using the indium internal standard solution (InISS) as matrix. InISS was a
178 dilution at 2 ng/mL of Indium in 1%TMAH / 1%EDTA. The blank was a dilution of 2% human
179 plasma matrix in 1%TMAH / 1%EDTA. The raw antimony count of the blank must be $\leq 25\%$ of the
180 low SST raw count.

181 Preparation of calibration and quality control standards

182 Calibration standards were prepared by mixing an aliquot of the commercial antimony stock solution
183 with purified water to yield eight calibration standards 2.5, 4, 25, 50, 250, 500, 725, 1000 $\mu\text{g/mL}$.
184 Similarly, a set of five quality control (QC) standards were prepared separately with purified water
185 to produce 2.5, 5, 50, 750, 10000 $\mu\text{g/mL}$ concentrations.

186 Preparation of calibration samples

187 Calibration stock standards were mixed with filtered control human plasma in a rotary mixer for at
188 least 30 min at 30 rpm to yield nominal antimony concentrations of 25, 50, 250, 500, 2500, 5000,
189 7500 and 10000 $\mu\text{g/mL}$. Calibration samples were either used fresh or stored frozen at either -20 or -

190 80 ± 10°C for no longer than 56 days. Calibration samples used to determine stability were freshly
191 prepared.

192 **Preparation of validation samples**

193 Plasma validation samples were prepared by mixing QC standard solutions with human plasma in a
194 rotary mixer for at least 30 min at 30 rpm to give nominal antimony concentrations of 25 (QCLLOQ),
195 50 (QCL), 500 (QCM), 7500 (QCH) and 100000 ng/mL (DQC). Validation samples were stored
196 frozen at either -20 or -80 ± 10°C for no longer than 56 days.

197 PBMC validation samples were prepared by mixing an aliquot (100 µL) of the plasma validation
198 samples QCLLOQ, QCL, QCM, and QCH with and an aliquot of control PBMC matrix (100 µL) at
199 the time of sample digestion.

200 **Antimony digest preparation**

201 Analytical samples were thawed at room temperature and vortex mixed. For plasma analysis, an
202 aliquot of each plasma sample (100 µL) was mixed with 4.90 mL of InISS in a rotary mixer for 30
203 minutes at room temperature. For PBMC analysis, an aliquot of each PMBC sample (100 µL PBMC
204 matrix and 100 µL plasma validation sample) was added to 4.80 mL of InISS and mixed for 30 min.
205 An aliquot of each processed sample was then analyzed by ICP-MS together with quality control
206 samples and a multilevel calibration.

207 Intracellular antimony concentration was calculated by dividing the total estimated antimony content
208 in the cell pellet by the total cell volume (number of PBMCs per pellet × 283 fL, where 283 fL is the
209 average volume of a single PBMC ²³)

210 **Dilution**

211 A 1:10 dilution of the samples was prepared by adding 0.5 mL of each digested sample to 4.5 mL of
212 InISS. Samples were vortex mixed for approximately 10 seconds, tumbled for at least 30 minutes on
213 rotary mixer and then transferred to a sample rack for analysis by ICP-MS.

214

215 **RESULTS**

216 **Assay specificity and calibration**

217 The spectrographic interference from antimony on the indium response was within acceptance criteria
218 (≤ 5.00% of the mean peak area of indium matrix blank response in the run). Similarly, the
219 spectrographic interference from indium on the antimony response was within acceptance criteria (≤
220 25.0% of the mean peak area of the LLOQ of antimony response in the run. A linear model method
221 using a weighting of 1/concentration² was selected for calibration of antimony in human plasma and
222 a representative calibration curve is presented in Figure 2.

223 <Figure 2>

224 The calibration curve parameters obtained throughout the validation study are listed in Table 3.

225 <Table 3>

226 Quality control samples, prepared in plasma at antimony concentrations 50, 500, 7500 ng/mL were
227 used to demonstrate the performance of the analytical assay. The relative bias of the back-calculated
228 concentrations of antimony within the acceptance criteria ranged between -2.60% and 3.51% for 7
229 analytical runs ran over 132 days (Table 4).

230 <Table 4>

231 Quality control (QC) data was obtained during the validation process. Quality control samples at low
232 (50 ng/mL), medium (500 ng/mL) and high (750 ng/mL) concentration were evaluated by duplicate
233 over analytical runs 2 to 6 (n=10). The mean antimony concentration for the low concentration control
234 was 50 ng/mL (SD=3.89; %CV=7.78; %Bias=0.00); 494 ng/mL (SD=9.91; %CV=2.01; %Bias=-
235 1.20) for the medium concentration control and 7520 ng/mL (SD=189; %CV=2.51; %Bias=0.27) for
236 the high concentration control sample. The impact of carry-over was assessed at the start and the end
237 of every run containing a calibration curve. The mean percentage carry-over was 10.6 % and within
238 the acceptance criteria ($\leq 25.0\%$ difference).

239 Assay variability

240 Accuracy and within-run precision for the validation of the antimony assay are summarized in Table
241 5. The accuracy ranged from -1.20 to 1.20% of nominal values. At all concentration levels of
242 antimony, the ranges of accuracy and precision were within established acceptance criteria.

243 <Table 5>

244 Accuracy and within-run precision for the validation of the antimony assay in PBMC are summarized
245 in Table 6. The accuracy ranged from -12.2 to 20.8% of nominal values. At all concentration levels
246 of antimony, the ranges of accuracy and precision were within established acceptance criteria

247 <Table 6>

248 Antimony stability

249 The stability of antimony in plasma was established following storage at room temperature for 24
250 hours using plasma samples spiked with 50 ng/mL or 7500 ng/mL of antimony standards defined as
251 low and high concentration quantification controls, respectively. Six replicates were analyzed for
252 each concentration and condition. No significant changes in the plasma antimony concentrations were
253 observed after this storage period. The mean concentration for the low concentration control was 50.4
254 ng/mL (SD=4.28; %CV=8.49; %Bias=0.80) and 7550 ng/mL (SD=123; %CV=1.63; %Bias=0.67)
255 for the high concentration control.

256 Additionally, stability of antimony in plasma was assessed following four freeze/thaw cycles at -20°C
257 and -80°C \pm 10°C utilizing plasma samples spiked with 50 ng/mL or 7500 ng/mL of antimony
258 standard. Six replicates were analyzed for each concentration and condition and the accuracy and
259 precision for quantitation of antimony under these conditions was evaluated. Subsequent to four
260 freeze/thaw cycles at -20°C the mean concentration for the low concentration control was 48.3 ng/mL
261 (SD=2.09; %CV=4.33; %Bias=-3.40) and 7290ng/mL (SD=314; %CV=4.31; %Bias=-2.80) for the

262 high concentration control. At -80°C the mean concentration for the low concentration control was
263 46.3 ng/mL (SD=1.18; %CV=2.55; %Bias=-7.40) and 7530 ng/mL (SD=107; %CV=1.42;
264 %Bias=0.40).

265 Stability of antimony in plasma was established following storage at approximately -20°C and -80°C
266 ± 10°C for 56 days. Six replicates were analyzed for each concentration and condition and the
267 accuracy and precision for quantitation of antimony under these conditions was evaluated. Storage of
268 plasma samples at -20°C for 56 days resulted in a mean concentration for the low concentration
269 control of 48.7 ng/mL (SD=1.66; %CV=3.41; %Bias=-2.60) and 7450ng/mL (SD=80.7; %CV=1.08;
270 %Bias=-0.67) for the high concentration control. Storage at -80°C for the same period resulted in a
271 mean concentration for the low concentration control of 48.2ng/mL (SD=2.30; %CV=4.77; %Bias=-
272 3.60) and 8150 ng/mL (SD=315; %CV=3.87; %Bias=8.67) for the high concentration control.

273 Stability of antimony in processed human plasma samples after storage at room temperature for 120
274 hours and 35 days at room temperature was also evaluated. Six replicates were analyzed for each
275 concentration. Storage for 120 hours resulted in a mean concentration for the low concentration
276 control of 52.0 ng/mL (SD=2.47; %CV=4.75; %Bias=4.00) and 7820ng/mL (SD=128; %CV=1.64;
277 %Bias=4.27) for the high concentration control. Following storage of the processed samples for 35
278 days at room temperature resulted in a mean concentration for the low concentration control of 48.9
279 ng/mL (SD=1.14; %CV=2.33; %Bias=-2.20) and 7630 ng/mL (SD=158; %CV=2.07; %Bias=1.73)
280 for the high concentration control.

281 **Influence of dilution on the quantitation of antimony in plasma**

282 Plasma antimony levels can reach peak concentrations over 40 µg/mL following intramuscular
283 administration of meglumine antimoniate ¹¹, therefore plasma dilution is usually required for
284 antimony quantification. The accuracy and precision results for quantitation of antimony following
285 plasma sample dilution were evaluated over one analytical run and six replicates were measured.
286 Plasma concentrations up to 100000 ng/mL were reliably analyzed when diluted 1:10 (v:v) into the
287 calibration range of the assay. The mean quantified concentration of spiked plasma was 105000ng/mL
288 (SD=2400; %CV=2.29; %Bias=5.00).

289 The accuracy and precision results for quantitation of antimony in digested dilutions prepared from
290 plasma samples were also evaluated. Concentrations up to 100000 ng/mL were reliably analyzed
291 when diluted 1:10 (v:v) into the calibration range of the assay. The mean concentration was 102000
292 (SD=816; %CV=0.80; %Bias=2.00, n=6).

293 **Antimony determination in clinical samples of patients undergoing antileishmanial treatment 294 with meglumine antimoniate**

295 The ICP-MS quantitative method validated in this study was applied to determine the plasma and
296 intracellular levels of antimony in patients undergoing treatment for cutaneous leishmaniasis with
297 meglumine antimoniate. Levels of antimony were measured at the end of the treatment (day 20) and
298 evaluated up to 24 hours following drug administration. Figure 3A-E presents the plasma and
299 intracellular (PBMCs) concentration-time curves of five adult patients.

300 <Figure 3>

301 Discussion

302 A wide range of analytical strategies have been used to quantify antimony in biological samples, and
303 atomic absorption spectroscopy, using diverse atomization configurations, is the most employed
304 technique^{24,25}. Previously, our group standardized and applied an electrothermal atomic absorption
305 spectrometry method to quantify antimony in plasma and urine samples after administration of
306 intramuscular Glucantime®¹¹. However, no standardized methods for determination of intracellular
307 concentrations of antimony were available to date, which limited the study of pharmacokinetics of
308 antimonial compounds at the site of drug action during antileishmanial chemotherapy.

309 We have developed and scientifically validated a reproducible and accurate ICP-MS method for the
310 quantification of total antimony in human plasma and PBMCs in accordance with the European
311 Bioanalysis Forum (EBF) recommendations. Antimony levels in clinical samples were quantitatively
312 determined by ICP-MS following digestion in 1%TMAH / 1% EDTA, using indium as the internal
313 standard. Accuracy and within-run precision were within acceptance limits. The maximum run size
314 for this assay (assay robustness) was 240 injections per batch. Antimony was stable in human plasma
315 at room temperature for at least 24 hours, at approximately -20°C or -80°C ± 10°C for at least 56 days
316 and following at least four freeze/thaw cycles. In addition, processed samples were stable for at least
317 35 days at room temperature. Dilution evaluation demonstrated that concentrations up to 100000
318 ng/mL of antimony could be reliably analyzed when diluted into the calibration range. These data
319 show that our method has adequate specifications to reliably perform pharmacokinetic studies of total
320 plasmatic and intracellular antimony. Accuracy and precision for PBMC was not as high as in plasma,
321 but met the predefined scientific validation assay acceptance criteria (+/- 25% at LLOQ).

322 The main limitation of this method is that it does not allow Sb^{III} and Sb^V speciation. Antimony-based
323 antileishmanial therapy is administrated as pentavalent antimony, which is rapidly absorbed reaching
324 peak plasma concentration between 0.5h to 2h. However bio reduction to the trivalent form is required
325 for the antileishmanial activity⁹. It has been proposed that this redox process can occur in the host
326 cell phagolysosome where the parasites reside, or in the parasitic cytosol²⁶. Sb^{III} induces an increase
327 of intracellular Ca²⁺ and finally apoptosis. Thus, antileishmanial activity is highly dependent upon
328 intracellular mechanisms. Although this method cannot discriminate antimony species, this is the first
329 validated method available for intracellular quantification of antimony.

330 We generated pharmacokinetic curves of antimony in PBMCs from patients undergoing meglumine
331 antimoniate antileishmanial treatment at last day of treatment and compared them to plasma
332 concentration-time curves. Intracellular antimony concentration was over seven times higher than
333 plasma before the last dose was administered showing intracellular accumulation over the course of
334 the antileishmanial treatment. As expected, a faster peak concentration was reached in plasma
335 compared to PBMCs after the last dose was administered. Intracellular drug quantification in
336 chemotherapy against intracellular pathogens is key to dissect the mechanisms of susceptibility and
337 therapeutic response, since adequate drug levels at the effect site, the cells in which the pathogen
338 survives and replicates, determine the pharmacological activity. Despite this, the relationships
339 between plasma and intracellular drug accumulation remain unknown for leishmaniasis and PK
340 studies rely on plasma drug concentrations assuming these act as surrogates of intracellular
341 concentrations²⁷. However, intracellular drug penetration can widely vary depending on host factors
342 such as permeability, local metabolism and drug efflux/uptake transporters activity²⁸, which in turn,

343 determine the level of exposure of intracellular pathogens to drugs. Additionally, multiple reports
344 have shown a link between the host immune response and the antimonial therapy efficacy ²⁹.
345 Therefore, linking information about intracellular drug concentrations, host immune signals and
346 therapy outcome can provide a powerful framework to optimize therapeutic regimens for *Leishmania*,
347 as well as for other intracellular pathogens.

348

349 **Acknowledgements**

350 We gratefully acknowledge the volunteers who participated in this study and members of the
351 CIDEIM Clinical Unit. Authors declare no conflict of interest. The research reported in this
352 publication was supported by Wellcome Trust 107595/Z/15/Z.
353

354 **Data availability**

355 The data that support the findings of this study are presented within the manuscript. Clinical data are
356 available on request from the corresponding author; these data are not publicly available due to
357 privacy or ethical restrictions.

358

359

360

361 **REFERENCES**

- 362 1. Burza S, Croft SL, Boelaert M. Leishmaniasis. *Lancet*. 2018;392(10151):951-970.
- 363 2. World Health Organization. Leishmaniasis. 2020; [https://www.who.int/news-room/fact-](https://www.who.int/news-room/fact-sheets/detail/leishmaniasis)
- 364 [sheets/detail/leishmaniasis](https://www.who.int/news-room/fact-sheets/detail/leishmaniasis). Accessed April 1, 2020.
- 365 3. Centers for Disease Control and Prevention. Leishmaniasis, Epidemiology & Risk Factors.
- 366 2020; <https://www.cdc.gov/parasites/leishmaniasis/epi.html>. Accessed May 25, 2020.
- 367 4. Sundar S, Chakravarty J. An update on pharmacotherapy for leishmaniasis. *Expert Opin*
- 368 *Pharmacol*. 2015;16(2):237-252.
- 369 5. Ponte-Sucre A, Gamarro F, Dujardin JC, et al. Drug resistance and treatment failure in
- 370 leishmaniasis: A 21st century challenge. *PLoS Negl Trop Dis*. 2017;11(12):e0006052.
- 371 6. Hefnawy A, Berg M, Dujardin JC, De Muylder G. Exploiting Knowledge on Leishmania
- 372 Drug Resistance to Support the Quest for New Drugs. *Trends Parasitol*. 2017;33(3):162-174.
- 373 7. Sundar S, Singh A, Chakravarty J, Rai M. Efficacy and safety of miltefosine in treatment of
- 374 post-kala-azar dermal leishmaniasis. *ScientificWorldJournal*. 2015;2015:414378.
- 375 8. Shaw CD, Carter KC. Drug delivery: lessons to be learnt from Leishmania studies.
- 376 *Nanomedicine-Uk*. 2014;9(10):1531-1544.
- 377 9. Haldar AK, Sen P, Roy S. Use of antimony in the treatment of leishmaniasis: current status
- 378 and future directions. *Mol Biol Int*. 2011;2011:571242.
- 379 10. Uliana SRB, Trinconi CT, Coelho AC. Chemotherapy of leishmaniasis: present challenges.
- 380 *Parasitology*. 2018;145(4):464-480.
- 381 11. Cruz A, Rainey PM, Herwaldt BL, et al. Pharmacokinetics of antimony in children treated
- 382 for leishmaniasis with meglumine antimoniate. *The Journal of infectious diseases*.
- 383 2007;195(4):602-608.
- 384 12. Miekeley N, Mortari SR, Schubach AO. Monitoring of total antimony and its species by ICP-
- 385 MS and on-line ion chromatography in biological samples from patients treated for
- 386 leishmaniasis. *Anal Bioanal Chem*. 2002;372(3):495-502.
- 387 13. Zaghloul IY, Radwan MA, Al Jaser MH, Al Issa R. Clinical Efficacy and Pharmacokinetics
- 388 of Antimony in Cutaneous Leishmaniasis Patients Treated With Sodium Stibogluconate. *J*
- 389 *Clin Pharmacol*. 2010;50(11):1230-1237.
- 390 14. Reis PG, Abreu AT, Guimaraes AG, Teixeira MC, de Souza J, Silva-Barcellos NM.
- 391 Development and Validation of an Analytical Method for Quantification of Arsenic and
- 392 Antimony in Liposomes Using Inductively Coupled Plasma-Optical Emission Spectrometry.
- 393 *J Aoac Int*. 2013;96(4):771-775.

- 394 15. PerkinElmer. Technical note: The 30-Minute Guide to ICP-MS. 2004-2011;
395 [https://www.perkinelmer.com/CMSResources/Images/44-](https://www.perkinelmer.com/CMSResources/Images/44-74849tch_icpmsthirtyminuteguide.pdf)
396 [74849tch_icpmsthirtyminuteguide.pdf](https://www.perkinelmer.com/CMSResources/Images/44-74849tch_icpmsthirtyminuteguide.pdf). Accessed March 9, 2020.
- 397 16. Korvela M, Andersson M, Pettersson J. Internal standards in inductively coupled plasma
398 mass spectrometry using kinetic energy discrimination and dynamic reaction cells. *J Anal*
399 *Atom Spectrom*. 2018;33(10):1770-1776.
- 400 17. Vanhaecke F, Vanhoe H, Dams R, Vandecasteele C. The Use of Internal Standards in Icp
401 Ms. *Talanta*. 1992;39(7):737-742.
- 402 18. Zhang D, Du A, Wang X, et al. Pharmacokinetics and bioequivalence of two strontium
403 ranelate formulations after single oral administration in healthy Chinese subjects.
404 *Xenobiotica*. 2019;49(4):457-462.
- 405 19. Friedland BA, Hoesley CJ, Plagianos M, et al. First-in-Human Trial of MIV-150 and Zinc
406 Acetate Coformulated in a Carrageenan Gel: Safety, Pharmacokinetics, Acceptability,
407 Adherence, and Pharmacodynamics. *J Acquir Immune Defic Syndr*. 2016;73(5):489-496.
- 408 20. Cashin PH, Ehrsson H, Wallin I, Nygren P, Mahteme H. Pharmacokinetics of cisplatin during
409 hyperthermic intraperitoneal treatment of peritoneal carcinomatosis. *Eur J Clin Pharmacol*.
410 2013;69(3):533-540.
- 411 21. Fujisawa S, Ohno R, Shigeno K, et al. Pharmacokinetics of arsenic species in Japanese
412 patients with relapsed or refractory acute promyelocytic leukemia treated with arsenic
413 trioxide. *Cancer Chemother Pharmacol*. 2007;59(4):485-493.
- 414 22. Zhou Q, Ruan ZR, Yuan H, Jiang B, Xu DH. Pharmacokinetics and bioequivalence of
415 ranitidine and bismuth derived from two compound preparations. *World J Gastroenterol*.
416 2006;12(17):2742-2748.
- 417 23. Simiele M, D'Avolio A, Baietto L, et al. Evaluation of the mean corpuscular volume of
418 peripheral blood mononuclear cells of HIV patients by a coulter counter to determine
419 intracellular drug concentrations. *Antimicrobial agents and chemotherapy*. 2011;55(6):2976-
420 2978.
- 421 24. Matusiewicz H, Krawczyk M. Determination of total antimony and inorganic antimony
422 species by hydride generation in situ trapping flame atomic absorption spectrometry: a new
423 way to (ultra)trace speciation analysis. *J Anal Atom Spectrom*. 2008;23(1):43-53.
- 424 25. Altunay N, Gurkan R. A new cloud point extraction procedure for determination of inorganic
425 antimony species in beverages and biological samples by flame atomic absorption
426 spectrometry. *Food Chem*. 2015;175:507-515.

- 427 26. dos Santos Ferreira C, Silveira Martins P, Demicheli C, Brochu C, Ouellette M, Frézard F.
428 Thiol-induced reduction of antimony(V) into antimony(III): A comparative study with
429 trypanothione, cysteinyl-glycine, cysteine and glutathione. *Biometals*. 2003;16(3):441-446.
- 430 27. Croft SL. Leishmania and other intracellular pathogens: selectivity, drug distribution and PK-
431 PD [BSP Autumn Symposium "Microbial protein targets: towards understanding and
432 intervention", 14th-16th September 2016, University of Durham UK]. *Parasitology*.
433 2018;145(2):237-247.
- 434 28. Rizk ML, Zou L, Savic RM, Dooley KE. Importance of Drug Pharmacokinetics at the Site
435 of Action. *Cts-Clin Transl Sci*. 2017;10(3):133-142.
- 436 29. Mookerjee Basu J, Mookerjee A, Banerjee R, et al. Inhibition of ABC transporters abolishes
437 antimony resistance in Leishmania Infection. *Antimicrobial agents and chemotherapy*.
438 2008;52(3):1080-1093.

439

440

441

442

443

444

445

446

447

448

449

450

451

452

453 **Tables**

454 **Table 1.** Clinical characteristics of CL patients

Sociodemographic Characteristics	n=5
Age, mean (SD)	30.2 (12.61)
Sex, No (%)	
Male	4 (80%)
Female	1 (20%)
Race, No. (%)	
Aboriginal	3 (60%)
Mestizo	2 (40%)
Isolated species	
<i>Leishmania (Viannia) braziliensis</i>	3 / 5
<i>Leishmania (Viannia) panamensis</i>	1 / 5
Not available	1/ 5
Total	5 (100%)

455

456 **Table 2.** Agilent 7700x operating parameters

ICP-MS	Setting
RF Power	1550W
# of points per peak	3
Replicates	3
Integration time/mass	0.09 s (¹¹⁵ In); 0.09 s (¹²¹ Sb)
Total acquisition time	1.98 s
Nebulizer/carrier gas flow	1.05 L/min
Dilution mode	OFF
Integrated Sample Introduction System (ISIS-DS)	Setting
Load time	8 s
Load speed	0.45 rps
Probe rinse time	90 s
Post rinse time	30 s
Post rinse speed	0.5 rps
Loop tubing ID	2.29 mm

457

458

459 **Table 3.** Calibration curve regression parameters for antimony

Run day	Analytical run number	Slope	Intercept	R-Squared	LLOQ	LOQ
1	1	0.0039481	0.0089183	0.9966	25	10000
1	2	0.0038862	0.0082196	0.9979	25	10000
40	3	0.0039172	0.018297	0.9969	25	10000
68	4	0.0032206	0.0037602	0.9981	25	10000
68	5	0.0031721	0.0065024	0.9981	25	10000
75	6	0.0035459	0.0058869	0.9964	25	10000
132	7	0.00386	0.022976	0.9953	25	10000
Mean		0.0036500	0.0106515	0.9970		
SD		0.0003376	0.0071493	0.0011		
%CV		9.25	67.12	0.11		

460 **Table 4.** Back-calculated calibration standards for antimony in human plasma

Analytical run number	25.0 ng/mL	50.0 ng/mL	250 ng/mL	500 ng/mL	2500 ng/mL	5000 ng/mL	7500 ng/mL	10000 ng/mL
1	21.9	48.5	246	494	2390	4980	7420	10300
	28.0	52.2	250	489	2440	5210	7630	10400
2	23.8	50.2	238	501	2470	4990	7370	10600
	27.1	47.2	243	485	2480	5180	7780	10200
3	23.8	45.3	247	512	2420	5260	7430	10600
	27.6	49.0	245	514	2400	5180	7620	9580
4	26.0	49.7	252	504	2510	5350	7580	10700
	25.1	46.3	240	483	2460	5050	7120	9970
5	24.3	47.2	246	486	2500	5150	7460	10400
	26.6	48.7	261	512	2430	4880	7130	10600
6	23.4	49.5	249	463	2260	5350	7630	9410
	25.7	54.0	258	508	2500	5200	7680	*13400
7	23.6	50.2	254	503	2390	4920	7180	10900
	27.8	44.2	241	501	2490	4830	7670	10900
Mean	25.3	48.7	248	497	2439	5109	7479	10351
S.D.	1.92	2.61	6.69	14.3	66.2	169	215	462
%CV	7.59	5.36	2.70	2.88	2.71	3.31	2.87	4.46
%Bias	1.20	-2.60	-0.80	-0.60	-2.44	2.18	-0.28	3.51
n	14	14	14	14	14	14	14	13

461 Reason for exclusion

462 * >20% of acceptance criteria, not in statistics

463

464 **Table 5.** Accuracy and precision of antimony in human plasma

It is made available under a [CC-BY-ND 4.0 International license](https://creativecommons.org/licenses/by-nd/4.0/) .

Analytical run number	25.0 ng/mL	50.0 ng/mL	500 ng/mL	7500 ng/mL
1	24.8	55.1	486	7420
	26.1	48.6	486	7600
	26.5	47.9	491	7570
	23.2	46	510	7630
	24.2	50.6	495	7610
	26.1	50.6	498	7680
Mean	25.2	49.8	494.0	7585
S.D.	1.30	3.13	9.05	88.71
%CV	5.16	6.29	1.83	1.17
%Bias	0.80	-0.40	-1.20	1.13
n	6	6	6	6

465

466 **Table 6.** Accuracy and precision of antimony in human PBMCs

Analytical run number	25.0 ng/mL	50.0 ng/mL	500 ng/mL	7500 ng/mL
7	27.6	43.8	437	6390
	31.3	42.3	454	6440
	34.3	45	446	7050
	28.4	44.2	420	7310
	29.3	44	454	7450
Mean	30.2	43.9	442	6928
S.D.	2.68	3.13	9.05	88.70
%CV	8.88	7.14	2.05	1.28
%Bias	20.7	-12.3	-11.6	-7.63
n	5	5	5	5

467

468

469 **Figure legends**

470 **Figure 1. Meglumine antimonate chemical structure**

471 **Figure 2. Representative calibration curve for antimony in human plasma**

472 Calibration standards for antimony (25, 50, 250, 500, 2500, 5000, 7500 and 10000 ng/mL) were
473 quantified using ICP-MS and calibration was fitted with a linear model based on weighting of
474 $1/\text{concentration}^2$. This calibration was obtained from the analytical run 1 and processed with the
475 software Watson LIMS version 7.5 SP1.

476 **Figure 3. Antimony plasma and intracellular concentration-time curves**

477 (A-E) Pharmacokinetic curves for antimony plasma and intracellular (PBMCs) levels. Samples
478 were procured from five patients undergoing cutaneous antileishmanial therapy with meglumine
479 antimoniate at the end of the treatment (day 20) and evaluated up to 24 hours following drug
480 administration.

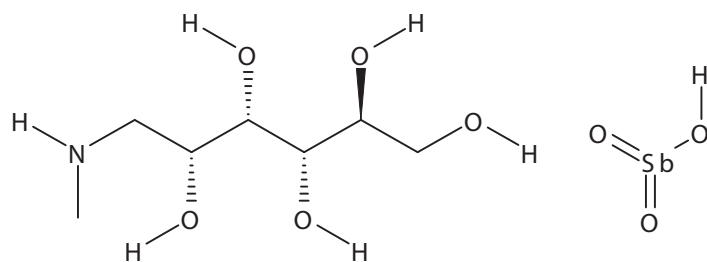


Figure 1. Meglumine antimonate chemical structure

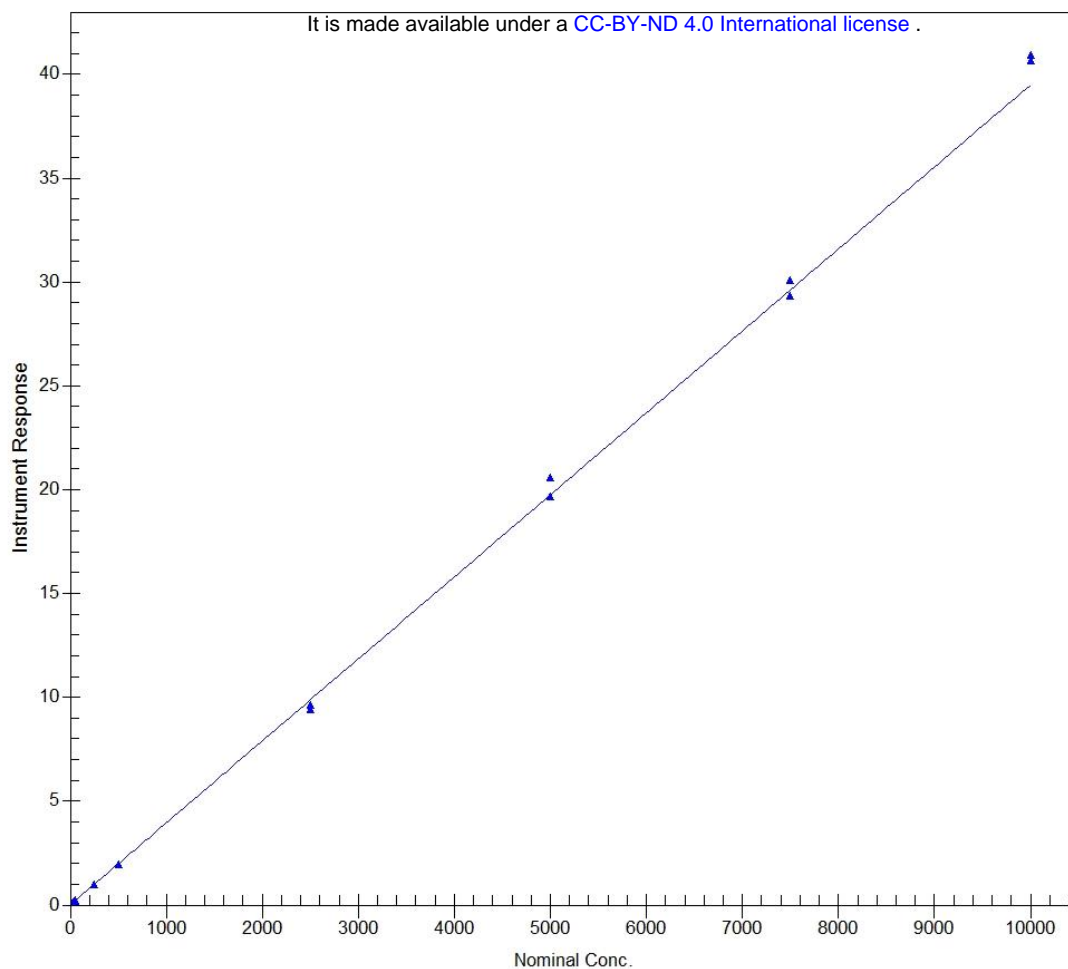
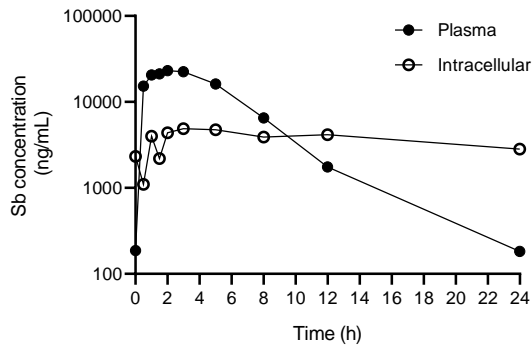


Figure 2. Representative calibration curve for antimony in human plasma

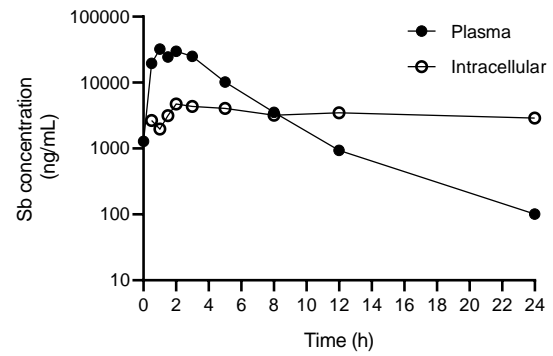
Calibration standards for antimony (25, 50, 250, 500, 2500, 5000, 7500 and 10000 ng/mL) were quantified using ICP-MS and calibration was fitted with a linear model based on weighting of $1/\text{concentration}^2$. This calibration was obtained from the analytical run 1 and processed with the software Watson LIMS version 7.5 SP1.

A.

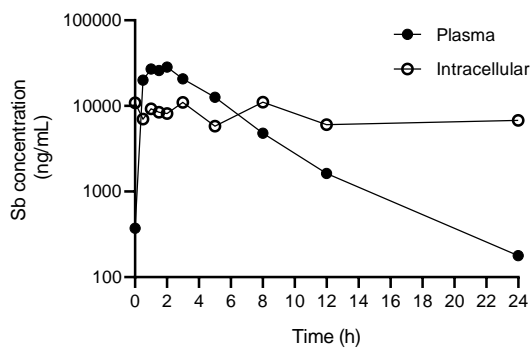
It is made available under a [CC-BY-ND 4.0 International license](https://creativecommons.org/licenses/by-nd/4.0/).



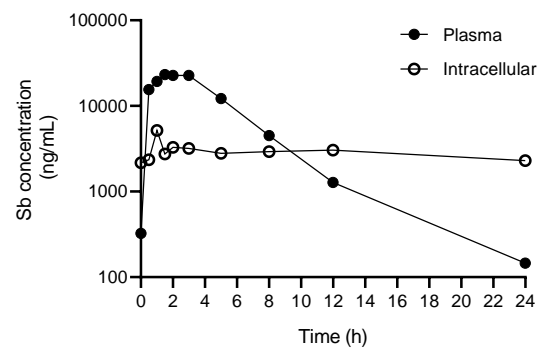
B.



C.



D.



E.

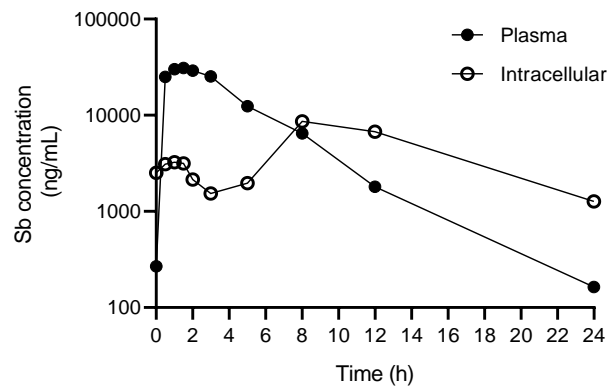


Figure 3. Antimony plasma and intracellular concentration-time curves

(A-E) Pharmacokinetic curves for antimony plasma and intracellular (PBMCs) levels. Samples were procured from five patients undergoing cutaneous antileishmanial therapy with meglumine antimoniate at the end of the treatment (day 20) and evaluated up to 24 hours following drug administration.