

1 **Article summary line:** Several commercially available SARS-CoV-2 ELISAs show limited
2 specificity when applied to serum panels of African origin.

3

4 **Running title:** SARS-CoV-2 IgG ELISA specificity

5

6 **Keywords:** SARS-CoV-2, seroepidemiologic studies, immunoglobulin G, Enzyme-Linked
7 Immunosorbent Assay, specificity, Africa

8

9 **Title:**

10 **Limited specificity of commercially available SARS-CoV-2 IgG ELISAs in serum**
11 **samples of African origin**

12

13 **Authors:**

14 Petra Emmerich, Carolin Murawski, Ronald von Possel, Lisa Oestereich, Sophie Duraffour,
15 Meike Pahlmann, Nicole Struck, Daniel Eibach, Ralf Krumkamp, John Amuasi, Oumou
16 Maiga-Ascofare, Raphael Rakotozandrindrainy, Danny Asogun, Yemisi Ighodalo, Jürgen
17 May, Egbert Tannich, Christina Deschermeier

18

19 **Affiliations:**

20 Bernhard Nocht Institute for Tropical Medicine, Hamburg, Germany (P. Emmerich, C.
21 Murawski, R. von Possel, L. Oestereich, S. Duraffour, M. Pahlmann, N. Struck, D. Eibach, R.
22 Krumkamp, J. May, E. Tannich, C. Deschermeier)
23 University of Rostock, Rostock, Germany (P. Emmerich)
24 German Center for Infection Research (DZIF), Hamburg, Germany (L. Oestereich, S.
25 Duraffour, M. Pahlmann, N. Struck, D. Eibach, R. Krumkamp)
26 Kumasi Centre for Collaborative Research in Tropical Medicine, Kumasi, Ghana (J. Amuasi,
27 O. Maiga-Ascofare)

28 **NOTE:** This preprint reports new research that has not been certified by peer review and should not be used to guide clinical practice.
University of Antananarivo, Antananarivo, Madagascar (R. Rakotozandrindrainy)

- 29 Irrua Specialist Teaching Hospital, Irrua, Nigeria (D. Asogun, Y. Ighodalo)
- 30 National Reference Centre for Tropical Pathogens, Hamburg, Germany (E. Tannich)
- 31
- 32 **Corresponding author:** Christina Deschermeier
- 33 **Mailing address:** Bernhard Nocht Institute for Tropical Medicine, Bernhard-Nocht-Str. 74,
- 34 20359 Hamburg
- 35 **Email address:** descherm@bnitm.de
- 36 **Phone number:** +49 (40) 42818-438
- 37 **ORCID ID:** 0000-0002-8309-7877

38 **ABSTRACT**

39 Specific serological tests are mandatory for reliable SARS-CoV-2 seroprevalence studies but
40 assay specificity may vary considerably between populations due to interference of immune
41 responses to other pathogens. Here, we assess the false positive rates obtained with four
42 commercially available IgG ELISAs in serum panels originating from three different African
43 countries.

44

45 By August 16th 2020, 945,165 laboratory-confirmed SARS-CoV-2 infections and 18,476
46 deaths caused by COVID-19 have been reported from the WHO Africa region (1). Currently,
47 community transmission is observed in 33 African countries including Tanzania, Ghana,
48 Madagascar, Nigeria, Kenya, and South Sudan; in 14 other African countries (e.g. Uganda,
49 Burundi, Rwanda) clusters of cases or sporadic cases have been described (1). To correctly
50 determine the actual exposure of the population to SARS-CoV-2 and to draw reliable
51 conclusions on morbidity and case fatality rates, highly sensitive and specific serological
52 tests are mandatory.

53 Up to now, a plethora of serological tests for detection of anti-SARS-Cov-2 antibodies has
54 been developed and commercialized (2, 3). Although performance data for several of these
55 assays have been rapidly communicated by different laboratories (4-8), to our knowledge no
56 reports are available yet on the applicability of these tests on African serum panels. Here,
57 assay specificity may be challenged by previous or current infections with other pathogens;
58 in particular, hypergammaglobulinemia induced by *Plasmodium* infection may cause false
59 positive results in serological tests (9, 10).

60

61 **THE STUDY**

62 To assess the specificities of commercially available SARS-CoV-2 IgG ELISA tests in serum
63 panels of different origin, *a priori* SARS-CoV-2 IgG negative serum panels (**Appendix Table**
64 **1**) collected before 2019 in African countries (Ghana: n=79, Madagascar: n=79, Nigeria:
65 n=40, comprising samples from both febrile patients and symptom-free donors), South

66 America (Colombia: n=40, symptom-free donors), Asia (Lao PDR: n=20, symptom-free
67 donors), and Europe (Germany: n=75, symptom-free donors) were analyzed with the
68 Euroimmun Anti-SARS-CoV-2-NCP IgG ELISA (Euroimmun, Lübeck, Germany), the
69 Euroimmun Anti-SARS-CoV-2 IgG ELISA (Euroimmun, Lübeck, Germany), the EDITM Novel
70 Coronavirus COVID-19 IgG ELISA (Epitope Diagnostics, San Diego, US), and the Mikrogen
71 *recomWell* SARS-CoV-2 IgG ELISA (Mikrogen, Neuried, Germany) (**Appendix Table 2**).
72 Assays were performed and evaluated according to the manufacturers' instructions. To
73 quantify variation of index values determined on different days/plates (inter-assay/inter-lot
74 variation), two sera from German patients with a previous PCR-confirmed SARS-CoV-2
75 infection which were collected on day 19 post onset of symptoms and one commercially
76 available human negative control serum (Merck Millipore) were included in each test
77 run/plate. In addition, subsets of serum panels were assayed using the Wantai SARS-CoV-2
78 Ab ELISA (Wantai, Beijing, China) detecting total anti-SARS-CoV-2 Ig (**Appendix Table 2**).
79 BNITM in-house SARS-CoV-2 IgG indirect immunofluorescence testing (IIFT) was performed
80 as described previously (11).

81 While IgG ELISA specificities were good to excellent for pre-COVID-19 serum panels
82 originating from Colombia, Lao PDR, Madagascar, and Germany, increased false positive
83 rates were observed in *a priori* SARS-CoV-2 IgG negative sera from Ghana and Nigeria
84 (**Figure 1, Table 1**). False positive rates were comparable in serum samples originating from
85 febrile vs. asymptomatic donors from Ghana; no immediately apparent correlation of false
86 positive ELISA results with *P. falciparum* parasitemia was observed (**Appendix Table 3**).
87 Nevertheless, a sound statistical analysis of possible correlations with the donors' health
88 status would require larger subgroups/sample numbers than were available for the current
89 study.

90 In contrast to the four indirect IgG ELISA tests evaluated in this study, the Wantai SARS-
91 CoV-2 Ab ELISA, detecting total antibodies employing a sandwich antigen procedure,
92 showed a high specificity when applied to a subset of sera from Ghana, Madagascar, and
93 Nigeria (**Appendix Figure 1**). Further testing with this assay was not possible due to the

94 large sample volume needed per well (100 µl of undiluted sample) and scarcity of stocked
95 pre-2019 sera. No SARS-CoV-2-specific fluorescence pattern could be observed in any of
96 the African samples by BNITM in-house SARS-CoV-2 IgG IIFT; non-specific staining was
97 observed in low dilutions of 20/79 (25.3%), 6/79 (7.6%), and 7/40 (17.5%) serum samples
98 from Ghana, Madagascar, and Nigeria, respectively.

99 While the index values obtained with the Euroimmun SARS-CoV-2-NCP IgG ELISA and the
100 EDI™ Novel Coronavirus COVID-19 IgG ELISA, both employing recombinant SARS-CoV-2
101 nucleoprotein as antigen, showed a clear correlation (**Table 2, Figure 2A, 2C, 2E**), only few
102 serum samples were concordantly classified as positive by the nucleoprotein-based
103 Euroimmun SARS-CoV-2-NCP IgG ELISA and the spike-based Euroimmun Anti-SARS-CoV-
104 2 IgG ELISA (**Table 2, Figure 2B, 2D, 2F**). Thus, testing specificity can be increased by
105 combination of two serological tests featuring different antigens (spike and nucleoprotein).

106

107 **CONCLUSIONS**

108 In accordance with evaluation studies recently published by other authors (4-6, 8), the
109 commercially available SARS-CoV-2 IgG ELISAs displayed a good to excellent specificity
110 when applied to serum panels originating from European or US donors. In contrast,
111 significantly increased false positive rates were observed in African pre-COVID-19 serum
112 panels originating from countries with a high malaria burden (Ghana and Nigeria (12)),
113 calling into question the eligibility of these assays for seroprevalence studies in these
114 regions. Therefore, the following recommendations should be considered when planning and
115 performing SARS-CoV-2 seroprevalence studies (not only) in Africa: 1) Prior to performance
116 of seroprevalence studies, carefully assess background/false positive signals obtained with
117 the chosen serological test(s) in the target population (using *a priori* SARS-CoV-2 IgG
118 negative serum samples which were stocked before 2019). Under certain circumstances,
119 adjustment of the assay cut-off originally proposed by the manufacturer may suffice to
120 improve/restore test specificity, but this may compromise assay sensitivity. 2) If necessary,
121 combine information from two independent serological tests (employing different antigens

122 and/or test principles). 3) If possible, re-evaluate samples generating a positive ELISA result
123 with IIFT on virus-infected cells (when evaluated by experienced personnel, the obtained
124 staining pattern contains additional information about signal specificity) and/or neutralization
125 testing.

126 Further studies will be necessary to assess sensitivity of the commercially available assays
127 in detecting anti-SARS-CoV2 IgG antibodies induced by SARS-CoV-2 infection in African
128 COVID-19 patients and to thoroughly identify causes for the reduced assay specificity in sera
129 from African donors.

130

131 **ACKNOWLEDGMENTS**

132 The authors thank J. Blessmann and S. Kann for providing symptom-free donor serum
133 samples from Lao PDR and Colombia, respectively. We thank C. Ehmen and N. Pekarek for
134 expert technical assistance.

135

136 **FUNDING**

137 The study was conducted within the framework of the project “East African Community (EAC)
138 regional network of public health reference laboratories for communicable diseases”
139 (<https://mobilelabs.eac.int/>) funded by the Federal Republic of Germany through the German
140 Development Bank (KfW). The study was supported by the German Research Foundation
141 (DFG, GU 883/4-1 and GU 883/5-1), by the German Federal Ministry of Health through
142 support of the WHO Collaborating Centre for Arboviruses and Hemorrhagic Fever Viruses at
143 BNITM (agreement ZMV I1-2517WHO005), through the Global Health Protection Program
144 (agreement ZMV I1-2517GHP-704), and through the COVID support agreement ZMVI1-
145 2520COR001. The funders had no role in study design, data collection and analysis,
146 decision to publish, or preparation of the manuscript.

147

148 **AUTHOR BIOGRAPHY**

149 Dr. Emmerich is a laboratory group leader at the Bernhard Nocht Institute for Tropical
150 Medicine in Hamburg, Germany. Her research is focused on diagnostics of viral infectious
151 diseases.

152 **REFERENCES**

- 153 1. WHO, COVID situation report 209, August 16th 2020.
- 154 2. FIND, <https://www.finddx.org/covid-19/sarscov2-eval-immuno/>, as accessed on
155 September 14th 2020.
- 156 3. Johns Hopkins University, <https://www.centerforhealthsecurity.org/resources/COVID-19/serology/Serology-based-tests-for-COVID-19.html>, as accessed on September
157 14th 2020.
- 159 4. Geurts van Kessel CH, Okba NMA, Igloi Z, Bogers S, Embregts CWE, Laksono BM,
160 *et al.* An evaluation of COVID-19 serological assays informs future diagnostics and
161 exposure assessment. *Nature communications*. 2020;11(1):3436.
- 162 5. Kruttgen A, Cornelissen CG, Dreher M, Hornef M, Imohl M, Kleines M. Comparison of
163 four new commercial serologic assays for determination of SARS-CoV-2 IgG. *Journal*
164 *of Clinical Virology*. 2020;128:104394.
- 165 6. Theel ES, Harring J, Hilgart H, Granger D. Performance characteristics of four high-
166 throughput immunoassays for detection of IgG antibodies against SARS-CoV-2.
167 *Journal of Clinical Microbiology*. 2020; 58(8):e01243-20.
- 168 7. Weidner L, Gansdorfer S, Unterweger S, Weseslindtner L, Drexler C, Farcet M, *et al.*
169 Quantification of SARS-CoV-2 antibodies with eight commercially available
170 immunoassays. *Journal of Clinical Virology*. 2020;129:104540.
- 171 8. Pflüger LS, Bannasch JH, Brehm TT, Pfefferle S, Hoffmann A, Nörz D, van der
172 Meirschen M, *et al.* Clinical evaluation of five different automated SARS-CoV-2
173 serology assays in a cohort of hospitalized COVID-19 patients. *Journal of Clinical*
174 *Virology*. 2020; 130:104549.
- 175 9. Silveira ELV, Dominguez MR, Soares IS. To B or Not to B: Understanding B Cell
176 Responses in the Development of Malaria Infection. *Frontiers in immunology*.
177 2018;9:2961.

- 178 10. Van Esbroeck M, Meersman K, Michiels J, Arien KK, Van den Bossche D. Letter to
179 the editor: Specificity of Zika virus ELISA: interference with malaria. *Euro surveillance*.
180 2016;21(21).
- 181 11. Reisinger EC, von Possel R, Warnke P, Geerdes-Fenge HF, Hemmer CJ, Pfefferle S,
182 *et al.* Screening of mothers in a COVID-19 low-prevalence region: Determination of
183 SARS-CoV-2 antibodies in 401 mothers from Rostock by ELISA and confirmation by
184 immunofluorescence. *Deutsche Medizinische Wochenschrift*. 2020; 145(17):e96-
185 e100.
- 186 12. WHO, World malaria report. 2019.

187 **TABLES**

188

189 **Table 1. SARS-CoV-2 IgG ELISA specificities**

		Euroimmun Anti-SARS-CoV-2-NCP-ELISA IgG			Euroimmun Anti-SARS-CoV-2-ELISA IgG			EDI™ Novel Coronavirus COVID-19 IgG ELISA kit			Mikrogen recomWell SARS-CoV-2 IgG				
Ghana (n=79)	pos	bl	neg	9	3	67	7	3	69	16	9	54	5	2	72
	specificity (95% CI)			88.6 (79.5 – 94.1)			91.1 (82.6 – 95.9)			79.7 (69.5 – 87.2)			93.7 (85.7 – 97.6)		
Madagascar (n=79)	pos	bl	neg	0	1	78	0	0	79	3	2	74	1	1	77
	specificity (95% CI)			100.0 (94.4 – 100.0)			100.0 (94.4 – 100.0)			96.2 (89.0 – 99.1)			98.7 (92.5 – 100.0)		
Nigeria (n=40)	pos	bl	neg	11	5	24	3	4	33	15	6	19	4	1	35
	specificity (95% CI)			72.5 (57.0 – 84.0)			92.5 (79.4 – 98.1)			62.5 (47.0 – 75.8)			90.0 (76.4 – 96.6)		
Africa, all (n=198)	pos	bl	neg	20	9	169	10	7	181	34	17	147	10	4	184
	specificity (95% CI)			89.9 (84.8 – 93.4)			94.9 (90.8 – 97.3)			82.8 (76.9 – 87.5)			94.9 (90.8 – 97.3)		
Colombia (n=40)	pos	bl	neg	0	1	39	2	0	38	0	2	38	1	0	39
	specificity (95% CI)			100.0 (89.6 – 100.0)			95.0 (82.6 – 99.5)			100.0 (89.6 – 100.0)			97.5 (86.0 – 100.0)		
Lao PDR (n=20)	pos	bl	neg	0	0	20	0	0	20	0	0	20	0	1	19
	specificity (95% CI)			100.0 (81.0 – 100.0)			100.0 (81.0 – 100.0)			100.0 (81.0 – 100.0)			100.0 (81.0 – 100.0)		
Germany (n=75)	pos	bl	neg	0	2	73	0	0	75	2	1	72	3	0	72
	specificity (95% CI)			100.0 (94.2 – 100.0)			100.0 (94.2 – 100.0)			97.3 (90.2 – 99.8)			96.0 (88.4 – 99.1)		

190

191 pos/bl/neg: number of samples rated as positive (pos), borderline (bl), and negative (neg) by the respective test. CI: confidence

192 interval. For calculation of specificities, both negative and borderline results were classified as “not positive”.

193

194

195

196 **Table 2. Correlation of SARS-CoV-2 IgG ELISA test results**

		Euroimmun Anti-SARS-CoV-2-NCP-ELISA IgG vs. EDI™ Novel Coronavirus COVID-19 IgG ELISA		Euroimmun Anti-SARS-CoV-2-ELISA IgG	
Ghana (n=79)	agreement: n _{pos} (%), n _{neg} (%)	6 (7.6), 60 (75.9)		3 (3.8), 66 (83.5)	
	combined specificity % (95% CI)	92.4 (84.1 – 96.8)		96.2 (89.0 – 99.1)	
Madagascar (n=79)	agreement: n _{pos} (%), n _{neg} (%)	0 (0.0), 76 (96.2)		0 (0.0), 79 (100.0)	
	combined specificity % (95% CI)	100.0 (94.4 – 100.0)		100.0 (94.4 – 100.0)	
Nigeria (n=40)	agreement: n _{pos} (%), n _{neg} (%)	9 (22.5), 23 (57.5)		2 (5.0), 28 (70.0)	
	combined specificity % (95% CI)	77.5 (62.2 – 87.9)		95.0 (82.6 – 99.5)	
Africa, all (n = 198)	agreement: n _{pos} (%), n _{neg} (%)	15 (7.6), 159 (80.3)		5 (2.5), 173 (87.4)	
	combined specificity % (95% CI)	92.4 (87.8 – 95.4)		97.5 (94.1 – 99.1)	

197

198 Both negative and borderline results were classified as “not positive”; n_{pos} : number of samples rated as positive by both assays;

199 n_{neg} : number of samples rated as “not positive” by both assays; CI: confidence interval.

200 **FIGURE LEGENDS**

201

202 **Figure 1. SARS-CoV-2 IgG ELISA results.** Index values obtained for serum/plasma
203 samples collected before 2019 in three different African countries (Ghana (n=79),
204 Madagascar (n=79), Nigeria (n=40)), Colombia (n=40), Lao PDR (n=20), and Germany
205 (n=75) with **(A)** the Euroimmun Anti-SARS-CoV-2-NCP IgG ELISA, **(B)** the Euroimmun Anti-
206 SARS-CoV-2 IgG ELISA, **(C)** the EDI Novel Coronavirus COVID-19 IgG ELISA, and **(D)** the
207 Mikrogen *recomWell* SARS-CoV-2 IgG ELISA. Dotted lines represent negative and positive
208 cut-off values, respectively. Grey shading indicates index values rated as “borderline”
209 according to the manufacturers’ instructions. Diamonds represent index values obtained for
210 two IgG positive COVID-19 patient sera sampled on day 19 post onset of symptoms (dark
211 grey: SARS-CoV-2 IgG IIFT titer 1:640, light grey: SARS-CoV-2 IgG IIFT titer 1:160) and one
212 negative control serum; error bars represent standard deviation of n=5 independent
213 measurements.

214

215 **Figure 2. Correlation of SARS-CoV-2 IgG ELISA results.** Index values obtained for the
216 Ghanaian **(A, B)**, Madagascan **(C, D)**, and Nigerian **(E, F)** serum samples with the
217 Euroimmun Anti-SARS-CoV-2-NCP IgG ELISA and the nucleoprotein-based EDI Novel
218 Coronavirus COVID-19 IgG ELISA **(A, C, E)** or the spike-based Euroimmun Anti-SARS-CoV-
219 2 IgG ELISA **(B, D, F)**. Dotted lines represent negative and positive cut-off values,
220 respectively. Grey shading indicates index values rated as “borderline” according to the
221 manufacturers’ instructions.

Figure 1

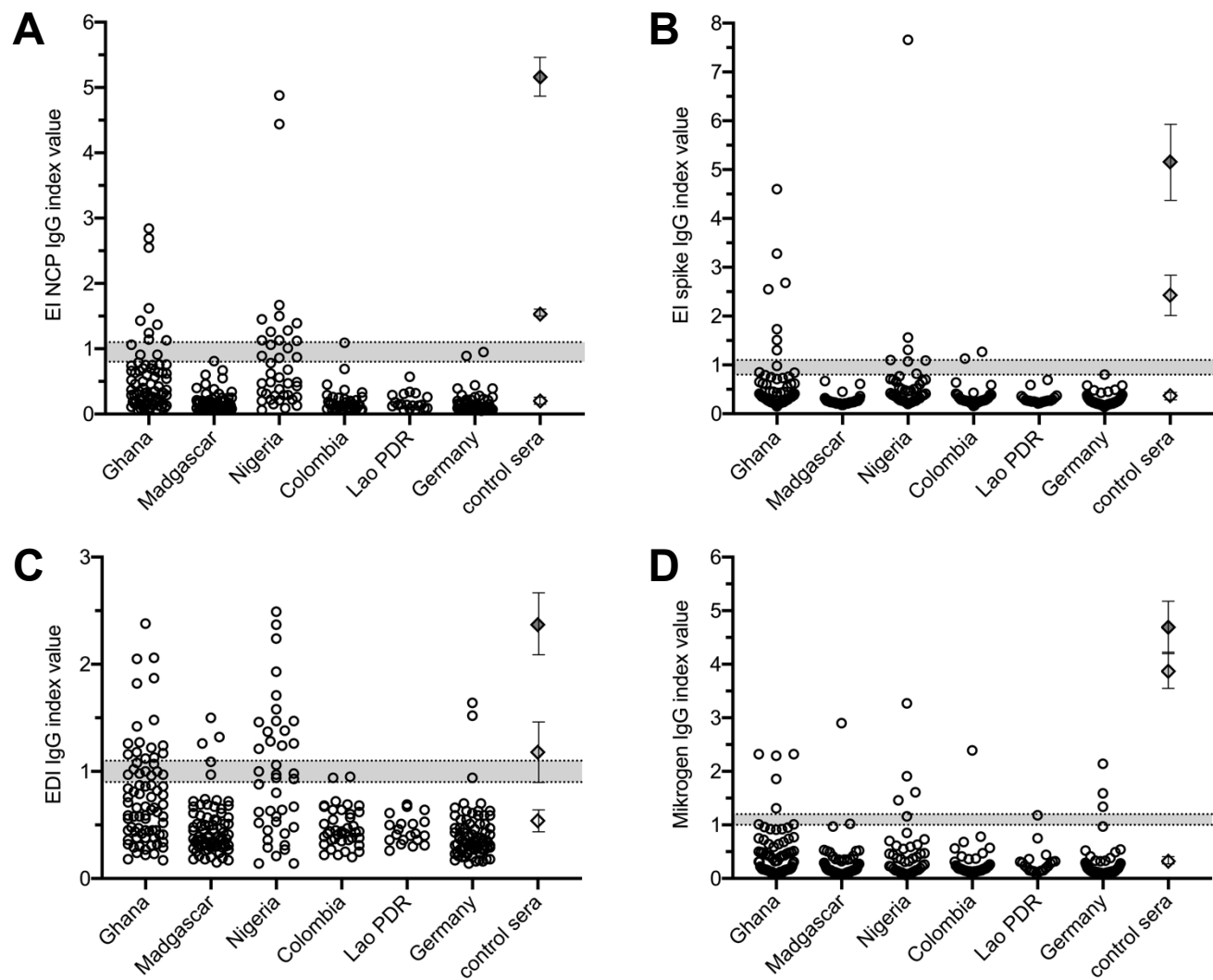


Figure 2

