

1 **Impact and Correlation of Air Quality and Climate Variables with COVID-19 Morbidity and**
2 **Mortality in Dhaka, Bangladesh**

3
4 **Md Riad Sarkar Pavel¹, Abdus Salam^{1*}, Mahbuba Yesmin², Nazmul Ahsan³, Shahid Uz**
5 **Zaman¹ and Farah Jeba¹**

6
7 *¹Department of Chemistry, Faculty of Science, University of Dhaka, Dhaka-1000, Bangladesh.*

8 *²Enam Medical College and Hospital, Department of Medicine, Savar, Dhaka Bangladesh*

9 *³Department of Genetic Engineering and Biotechnology, Faculty of Biological Sciences, University*
10 *of Dhaka, Dhaka-1000, Bangladesh*

11
12
13
14
15
16
17
18
19
20
21
22
23
24
25
26
27
28
29
30
31

**Corresponding author: +8801817061160; asalam@gmail.com; asalam@du.ac.bd*

32 **Abstract**

33 The COVID-19 pandemic unexpectedly stopped the steady life and enhanced environmental
34 quality. To apprehend the transmission of COVID-19 and the improvement of air quality, we have
35 studied air quality indicators (PM_{2.5}, PM₁₀, AQI, and NO₂), CO₂ emission, and climate variables
36 (temperature, relative humidity, rainfall, and wind velocity) in the extremely polluted and densely
37 populated Southeast Asian megacity Dhaka, Bangladesh from March to June 2020. The Kendall and
38 Spearman correlations were chosen to test the connotation of air quality and climate variables with
39 COVID-19 morbidity and mortality. The average concentrations of PM_{2.5}, PM₁₀, and CO₂ were 65.0
40 ± 37.9 and 87.1 ± 52.8 µm m⁻³, and 427 ± 11.8 ppm, respectively. The average PM_{2.5} and PM₁₀
41 drastically reduced up to 62% during COVID-19 lockdown in Dhaka comparing with March 2020
42 (before lockdown). Comparing with the same period in 2019, PM_{2.5} reduced up to 33.5%. The
43 average NO₂ concentration was 35.0 µmol m⁻² during the lockdown period in April, whereas 175.0
44 µmol m⁻² during March (before lockdown). A significant correlation was observed between
45 COVID-19 cases and air quality indicators. A strong correlation was obtained between climate
46 variables and the total number of COVID-19 morbidity and mortality representing a favorable
47 condition for spreading the virus. Our study will be very expedient for policymakers to establish a
48 mechanism for air pollution mitigation based on scientific substantiation, and also will be an
49 essential reference for the advance research to improve urban air quality and the transmission of the
50 SARS-CoV-2 virus in the tropical nations.

51

52 **Keywords:** COVID-19; air quality indicators; PM_{2.5} and PM₁₀; climate variables; Kendall and
53 Spearman correlation.

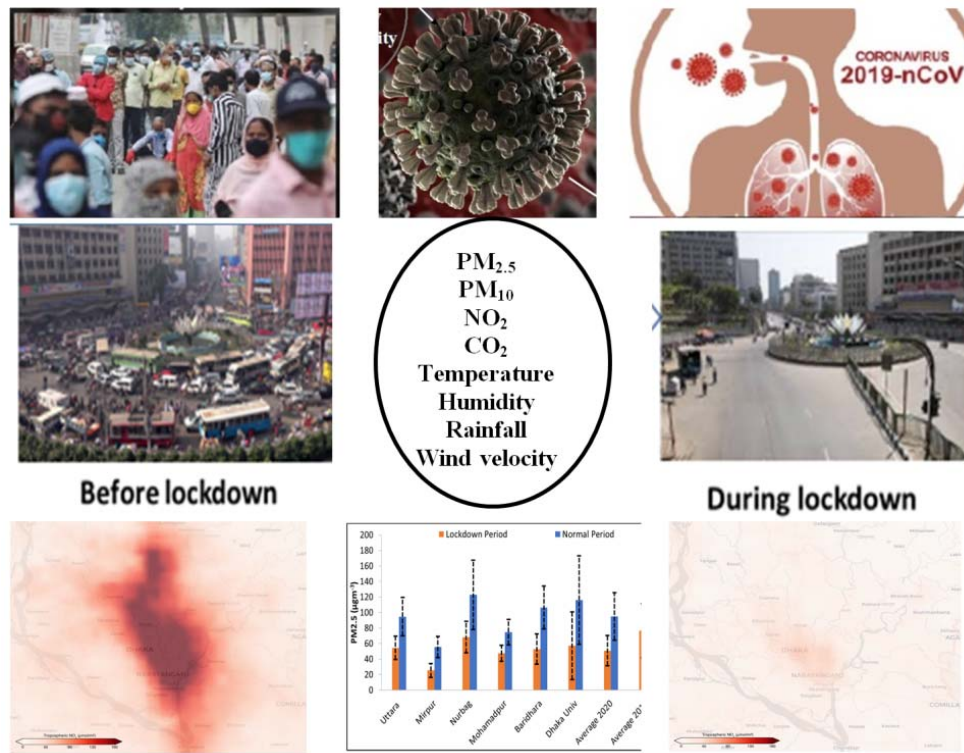
54 **Highlights:**

- 55 • COVID-19 lockdown drastically reduced $PM_{2.5}$ and PM_{10} concentrations up to 62%.
- 56 • During lockdown, NO_2 emission abridged up to 80%, CO_2 emission dropped by 2-4%.
- 57 • Climate variables revealed strong correlation with COVID-19 morbidity and mortality.
- 58 • COVID-19 cases and mortality had significant correlation with air quality indicators.
- 59 • Knowledge from enormous improved air quality will be transmitted to the policy execution.

60

61

62 **Graphical Abstract:**



63

64

65

66 **Introduction**

67 The COVID-19 pandemic has been progressing in 213 countries and territories all over the world
68 (Hopkins, 2020). It has been a devastating attack in China, Italy, France, Spain, United States,
69 Brazil, and many other countries (Hopkins, 2020; WHO, 2020b). In December 2019, COVID-19
70 started as an epidemic event in Wuhan, China having 11 million inhabitants in the central Hubei
71 Province. People were suffering from pneumonia as the result of infection of this novel coronavirus
72 (Li *et al.*, 2020, Wu *et al.*, 2020a). This virus was termed as SARS-CoV-2 on January 7, 2020, for
73 its similarity with global epidemic Severe Acute Respiratory Syndrome (SARS) that occurred
74 between 2002 and 2003. The severe respiratory complications are causing caused the epidemic and
75 officially termed as COVID-19 on February 11, 2020 (Xu *et al.*, 2020, WHO, 2020a). SARS-CoV-
76 2 contains a positive-sense, single-stranded RNA and which has a size of approximately 120 nm in
77 diameter spreading through droplets transmission (Shereen *et al.*, 2020). The most severe symptoms
78 were generally observed in older individuals having previous comorbidities, such as cardiovascular,
79 endocrine, digestive, and respiratory diseases (Sohrabi *et al.*, 2020, Wang *et al.*, 2020a). Up to June
80 16, 2020, over 443,281 have lost their lives due to COVID-19 infection in the entire world out of
81 8,196,036 infections on average of 5.41 % mortality rate (<https://www.worldometers.info>). The
82 virus has transmitted worldwide but, nowadays, some countries are recovering from the new
83 transmission. However, in some regions of the world, particularly Southeast Asian countries (e.g.,
84 Bangladesh, India), the COVID-19 infection scenario is worsening day by day. Poor standard of
85 living, limited health care facilities, high population density, worst air quality, and climate-
86 vulnerable situation make the people of this region more endangered towards infection.

87 In Bangladesh, the first cases of COVID-19 were reported on March 8, 2020, and the first death of
88 COVID-19 patient on March 18, 2020, by the Institute of Epidemiology, Disease Control and
89 Research (IEDCR) (<https://iedcr.gov.bd/>). As of June 16, 2020, Bangladesh has seen a total
90 COVID-19 infection of 94,481; total recovered of 36,262 and total death of 1,262 (mortality rate
91 was 1.3% based on confirmed cases). The greater Dhaka region has become the epicenter of
92 COVID-19 new cases and deaths in Bangladesh (<https://iedcr.gov.bd/>). The lockdown was enforced
93 on 26th March 2020, which ended on 30th May 2020. This long-term lockdown affected industrial
94 production, educational institutes, construction activities, small and large scale businesses. It created
95 a huge negative impact on the economy and a large group of people is facing a crisis for their daily
96 livings. Due to the uncontrolled situation of COVID-19, the Government of Bangladesh again
97 instigated regional lockdown depending on the number of infected people on June 16, 2020, marked
98 as a red, yellow, and green zone. During the lockdown, nature has got an opportunity for healing as
99 dwellers are maintaining social distancing, quarantine at home, minimum outside activities.
100 Therefore, we saw the blue sky in Dhaka city during the lockdown period (more than 100 days). Air
101 quality has also substantially improved compared to the previous years in Dhaka like other cities in
102 the World, e.g., Delhi, (-60%), Seoul (-54%), Wuhan (-44%), and Los Angeles (-31%) (IQAir,
103 2020).
104 However, air quality was not improved significantly in the entire world. It has improved a lot in
105 some cities but other cities it did not change at all, and the cause was not the COVID-19 lockdown
106 only (Schiermeier, 2020). For example, a significant reduction in Los Angeles, USA was not clear,
107 either for COVID-19 precautions or falling rain during this period (Schiermeier, 2020). In the
108 absence of traffic vehicles and control industrial activities, several air pollutants in China declined

109 up to 90% during COVID-19 pandemic (Le *et al.*, 2020) (a reduction of $22.8 \mu\text{g m}^{-3}$ NO_2 and 18.9
110 $\mu\text{g m}^{-3}$ $\text{PM}_{2.5}$ were also observed in China - Chen *et al.*, 2020b). Although it has not untarnished the
111 role of aerosol particles in the transmission of the SAR-CoV-2 virus, long-term high-level exposure
112 to air pollutants may have protracted vulnerability and mortality rates of COVID-19, (Liu *et al.*,
113 2020).

114 Some studies reported the relationship between the number of confirmed COVID-19 positive cases
115 and climate variables, e.g., temperatures, humidity (Bukhari and Jameel, 2020; Ma *et al.*, 2020).
116 Bukhari and cols, 2020 reported that the low number of positive COVID-19 confirmed cases
117 observed in tropical countries might be explained due to their usual warm and humid environmental
118 conditions. The regions with high relative humidity above 10 g m^{-3} could see a slowdown of
119 COVID-19 transmissions in a short time (Bukhari and Jameel, 2020). Ma and cols, 2020 also
120 revealed that the temperature and humidity were affecting factors related to the number of COVID-
121 19 mortality in Wuhan, China (Ma *et al.*, 2020).

122 Therefore, we would like to quantify the effect of lockdown on air quality parameters (PM_{10} , $\text{PM}_{2.5}$,
123 NO_2 , and CO_2) and also would like to elucidate the correlation between climate variables
124 (temperature, relative humidity, rainfall, and wind velocity) and air quality indicators with COVID-
125 19 morbidity and mortality in Dhaka, Bangladesh.

126

127 **Research Methodology**

128 Dhaka is the capital city of Bangladesh and the center of the Government, trade, and culture of the
129 country. Geographically, Dhaka is located in the center of Bangladesh between $23^{\circ}22'30''$ N to
130 $24^{\circ}22'20''$ N and $89^{\circ}41'6''$ E to $90^{\circ}59'23''$ E, on the eastern banks of the Buriganga River (Fig. 1).

131 The climate of Bangladesh is generally hot and humid. Meteorologically, Bangladesh can be sub-
132 divided into four seasons. Pre-monsoon (March-May), Monsoon (June-August), Post-monsoon
133 (September-November), and winter (December- January) (Salam *et al.*, 2012; Salam *et al.*, 2003).
134 The maximum summer temperature ranges from 30° C to 40° C. April is the warmest month and,
135 January is the coldest month in general. The temperature drops to 10° C on average across the
136 country during winter. The effect of monsoon climate is heavy rainfall. The maximum precipitation
137 is 103.6 inches, the minimum is 46.1 inches while the average is 63.4 inches. Dhaka is the most
138 densely populated megacity in the World with 21 million people residing within 1462.6 square
139 kilometers. The wind direction follows the general trend of south and south-west in the pre-
140 monsoon and north and north-west in the winter (Salam *et al.*, 2003).

141 This study includes two stages of analysis: 1) to assess the effect of lockdown on air quality
142 indicators (PM_{2.5} and PM₁₀), CO₂ emission, and 2) to study the correlation of climate variables
143 (average temperature, relative humidity, rainfall, and wind velocity) and air quality parameters with
144 COVID-19 morbidity and mortality. The Kendall and Spearman rank correlation tests were utilized
145 to examine the correlation between variables and air quality parameters. Air quality data of Dhaka
146 was obtained from our measurements at the Mukarram Hussain Khundker Building, University of
147 Dhaka. Data set for COVID-19 was taken from the COVID-19 archive from the Directorate General
148 of Health Services (DGHS) (www.dghs.gov.bd). Data on climate variables (average, relative
149 humidity, wind speed, and rainfall) was taken from weatherforyou.com and darksky.net.

150

151 **Results and Discussion**

152 **Overview of the Air Quality and Climate variables**

153 The summary of PM_{2.5}, PM₁₀, CO₂, temperature, relative humidity, wind velocity, and rainfall
154 between March 8 (1st day of confirmed COVID-9 cases in Bangladesh) and June 16, 2020, in
155 Dhaka megacity has been given in Table 1. The total average PM_{2.5} and PM₁₀ were 65.0 ± 37.9 and
156 $87.1 \pm 52.8 \mu\text{g m}^{-3}$, which were about 2.6 and 1.7 times higher than WHO guideline values for 24 h
157 average, respectively. The average PM_{2.5} was $50.8 \pm 19.6 \mu\text{g m}^{-3}$ during the lockdown and $94.9 \pm$
158 $30.6 \mu\text{g m}^{-3}$ before lockdown in Dhaka megacity. The lowest average relative humidity was 39.1 %,
159 the highest was 99.8 %, and the average rainfall was $0.23 \pm 0.31 \text{ inch hour}^{-1}$. The average CO₂
160 emission was $427 \pm 11.8 \text{ ppm}$, which is slightly lower ($456 \pm 63.4 \text{ ppm}$) than the value in January
161 2020.

162 As control measures during COVID-19 pandemic, precautions, such as lockdown were enforced by
163 restricting vehicle movements, closing government offices, schools, colleges, universities, shopping
164 malls, and “stay in home order” on March 26, 2020, have been taken by the Government of
165 Bangladesh. Due to the restrictions, the concentrations of PM_{2.5} and PM₁₀ have reduced drastically
166 up to 62% during April. The times series of daily average concentrations of PM_{2.5}, PM₁₀, and CO₂
167 have given in Figs. 2(a), 2(b) and 2(c) mentioning the events, e.g., lockdown begins, Garments
168 industry open, Eid festival, lockdown ends and offices, etc. The daily average global CO₂ were also
169 drastically reduced up to 17% with a maximum of 26% and a minimum of 4% in the early April
170 compared to the previous year in 2019 due to the restricted activates during COVID-19 pandemic
171 (Le Quéré *et al.*, 2020). In general, the values of the air quality parameters were getting lower with
172 the progress of the lockdown (Fig. 2). When the lockdown was curbed on May 30, 2020, we can
173 see, the concentrations of the air quality parameters were rising slowly in Dhaka. The monthly
174 average concentrations of PM₁₀, PM_{2.5}, and CO₂ emission were getting lower from January through

175 June 2020. January and February were almost similar but much higher than April, May, and June.
176 The reduction was not only for COVID-19 precautions activities, but also rainfall from April to
177 June (Fig. 2(d)), especially for PM_{2.5}, PM₁₀, and CO₂), but NO₂ reduction in April 2020 is only for
178 traffic emission (Fig. 5). However, we have identified and quantified the contribution of reduction
179 in air quality indicators due to COVID-19 lockdown by comparing it with the same period of the
180 previous year 2019 (Fig. 3 and Fig. 4). As a case study, we have differentiated between “before
181 lockdown” and “during lockdown” PM_{2.5} emission in Fig. 3.

182 Several recent papers reported that a decline in PM_{2.5} is associated with lockdown and affected
183 COVID-19 transmission (Chauhan and Singh, 2020; Sharma *et al.*, 2020). The data of the PM_{2.5}
184 concentrations were analyzed at five different locations in Dhaka city before lockdown (March 16-
185 27, 2020) and after lockdown (March 28-May 30, 2020) to see the variations in Dhaka city, and also
186 made a comparison with the same period in 2019 (Fig. 3). The average PM_{2.5} decline during the
187 lockdown period was 42.3% in Uttara, 31.6% in Mirpur, 57.4% at Nurbag, Kamrangirchar, 28.8%
188 in Mohammadpur, 56.5% in Baridhara, 62% in Dhaka University area (Fig. 3). The overall average
189 PM_{2.5} decreased by about 46.6% during the lockdown period. The average PM_{2.5} value during the
190 lockdown period in 2020 also decreased by 33.5% compared to the last year (2019), but regular
191 period values of PM_{2.5} were almost similar between 2020 and 2019 (Fig. 3).

192 The satellite images of NO₂ distribution over the Dhaka city have been given in Fig. 4 at different
193 periods before and during the lockdown, and also during limited scale lockdown in 2020; and also,
194 for a similar period in 2019. It has clearly shown the significant reduction of NO₂ concentration
195 during the lockdown period in April 2020 (about 35 $\mu\text{mol m}^{-2}$), whereas it was about 170 $\mu\text{mol m}^{-2}$
196 before lockdown over Dhaka. The comparison between April 13-27 in 2020 and April 15-29 in

197 2019 was also indicating a very drastic reduction of NO₂ concentration over Dhaka. During April
198 2020, the vehicles were very limited in the street of Dhaka due to the complete shutdown of offices,
199 schools, colleges, universities, constructions, industries, and also “stay in-home” order. These are
200 the major causes of the drastic reduction of NO₂ over Dhaka city because the foremost source of
201 NO₂ emissions is from traffic vehicles. The NO₂ reduction was 40% (on average) in many cities of
202 China, 20 - 38% in Western Europe and the USA during COVID-19 lockdown compared to the
203 same period in 2019 (Bauwens *et al.*, 2020).

204

205 **Variation of COVID-19 Morbidity and Mortality**

206 **With Air Quality Indicators**

207 Temporal variation of total confirmed COVID-19 cases, new cases, and daily deaths with PM₁₀,
208 PM_{2.5}, and AQI in Dhaka has given in Fig. 5. The relationship between aerosol particle number and
209 mass with SARS-CoV-2 virus has been studying but not fully understood yet. The high
210 concentration of viral RNA has been observed when the submicron and/or super submicron
211 particles having peaked in the aerosol size distribution curve (Liu *et al.*, 2020). The relationship
212 between COVID-19 morbidity and mortality cases and air quality index (PM₁₀, PM_{2.5}, and AQI)
213 was not linear (Fig. 5). The reason may be the particle sizes - PM_{2.5} and PM₁₀ are much larger
214 compared to the size of the SARS-CoV-2 virus. However, long term exposure to a high
215 concentration of particulate air pollution might be attributed to bronchial asthma, chronic
216 obstructive pulmonary diseases (COPD), chronic heart diseases, which might be one of the causes
217 of the relatively high COVID-19 death rate in Dhaka.

218

219 **With Climate variables**

220 The variation of total COVID-19 confirmed cases, daily new cases, and total deaths with climate
221 variables (temperate and relative humidity) in Dhaka from March 8, 2020 to June 16, 2020 has
222 given in Fig. 6. The total number of COVID-19 confirmed cases and total deaths were increasing
223 sharply in Dhaka. The temperature and relative humidity curve were also going up. The number of
224 confirmed cases was 94,481 on June 16, 2020 with the total deaths of 1262. However, the
225 relationship between climate variables and COVID-19 cases is not well understood yet, may be
226 many factors are responsible. But a strong linear relationship has been observed for the COVID-19
227 total and deaths cases with temperature and relative humidity in Dhaka city (Fig. 6). Climate
228 variables (e.g., temperature, relative humidity, wind velocity and rainfall) have a significant impact
229 on the formation, dispersion and deposition of pollutants in the atmosphere. Ambient air pollutants
230 with climate variables aggravated the pulmonary diseases and injured the respiratory pathways, and
231 hence facilitated the virus to infect the human system and cause unadorned damages (Zoran *et al.*,
232 2020).

233

234 **Kendall and Spearman Correlation Tests**

235 The Kendall and Spearman correlation tests were performed between the empirical data of PM_{2.5},
236 PM₁₀, CO₂, and AQI and climate variables (temperature, relative humidity, wind velocity, and
237 rainfall) with COVID-19 morbidity and mortality. In both Kendall and Spearman correlation tests,
238 we found significant negative correlation with air quality indicators (PM_{2.5}, PM₁₀, CO₂, and AQI)
239 with total confirmed COVID-19 cases, daily new cases, and mortality in Dhaka, Bangladesh (Table
240 2). The magnitude of the correlation coefficients of PM_{2.5}, PM₁₀, CO₂, and AQI were lower in

241 Kendall tests than the Spearman correlation. The air quality was good during lockdown period but
242 the mortality and morbidity was high in Dhaka. Because the COVID-19 transmitted patients may be
243 experiencing worst air quality from the previous months (January, February and March) of the year
244 that have significant impact on their health. Patients organs (e.g., lung, heart, kidney, etc.) may
245 already compromised by the long term exposure of the poor air quality in Dhaka. Some other
246 factors (immune system, cofactors) may also be contributed to this significant negative correlation
247 in Dhaka. In California, USA, Bashir *et al.* (2020b) also found similar results - PM_{2.5}, PM₁₀, SO₂,
248 CO, and NO₂ have significant negative correlation with total COVID-19 morbidity and mortality.
249 Whereas, the higher concentrations of PM₁₀ and PM_{2.5} reported a positive correlation with death
250 rate of COVID-19 in China (Yao *et al.*, 2020). Fattorini and Regili, 2020 revealed that the primary
251 cause of COVID-19 in Northern Italy was the continuous exposure of high levels of PM₁₀ and PM_{2.5}
252 (Fattorini and Regili, 2020). As a first-order approximation, the COVID-19 related morbidity and
253 mortality in Dhaka are significantly correlated with the high exposure of air quality parameters,
254 especially PM₁₀ and PM_{2.5} like other cities in the World (e.g., California, Wuhan, and Northern
255 Italy).

256 The climate variables (average temperature, relative humidity, wind velocity, and rainfall) have
257 strong positive correlation with the total COVID-19 confirmed and daily new cases, and mortality
258 in Dhaka. Previous studies of Vandini *et al.*, (2013) and Bashir *et al.*, (2020a) reported similar
259 results and support our findings. Shi *et al.*, 2020 reported that climate indicator (temperature) serves
260 as a driver for the COVID-19. On the other hand, Méndez-Arriaga, (2020) reported a negative
261 association of the air temperature with the total confirmed COVID-19 cases. COVID-19 outbreak at
262 Wuhan, China showed a strong association between diseases spread and weather conditions, with a

263 prediction of “warm weather will play an important role in suppressing the virus.” However,
264 temperature and relative humidity may play a significant role in COVID-19 transmission and also
265 have a substantial role in the mortality rate (Auler *et al.*, 2020; Poole, 2020; Sajadi *et al.*, 2020;
266 Chen *et al.*, 2020a; Ma *et al.*, 2020; Wang *et al.*, 2020b). Other meteorological indicators such as
267 wind velocity and rainfall also showed a significant positive correlation with COVID-19 cases in
268 Dhaka, Bangladesh.

269 Dhaka, as an administrative, cultural, and economic center of Bangladesh, experiences a high influx
270 of population from all over the country for seeking employment, education, business, and medical
271 treatments. Moreover, many people are living not only in the slums but also in the inappropriate
272 substandard houses with inadequate facilities and very limited medical access with the worst air
273 quality. All these made the COVID-19 situation in Dhaka uncontrollable and hence withstand with
274 a large number of COVID-19 confirmed and death cases for a comparatively long period.
275 Therefore, our study will supplement new knowledge for decision-makers that air quality and
276 climate variables are two important constraints that need to be addressed for controlling the
277 transmission of the SARS-CoV-2 virus in the developing countries.

278

279 **Conclusion**

280 Air quality parameters (PM_{2.5}, PM₁₀, AQI, NO₂, and CO₂) and climate variables (average
281 temperature, relative humidity, rainfall, and wind velocity) were studied before and during the
282 COVID-19 pandemic from March 8, 2020, to June 16, 2020, in Dhaka, Bangladesh. The study
283 revealed the impact of COVID-19 precautions on Dhaka air quality. The Kendall and Spearman
284 correlation tests were performed to see the correlation between COVID-19 morbidity and mortality

285 cases with climate variables and air quality indicators. The air quality has drastically reduced in
286 Dhaka due to COVID-19 lockdown in April 2020 (on average, about 2.5 times lower PM_{2.5} and 6
287 times lower NO₂ observed than a normal period). PM_{2.5}, PM₁₀, CO₂, air quality index (AQI) has no
288 positive but a significant correlation (within 1.0%) with the number of COVID-19 confirmed cases
289 and mortality. Average temperature, minimum temperature, and wind velocity have a strong
290 positive correlation with COVID-19 confirmed morbidity and mortality cases in Dhaka. These
291 findings will be helpful for policymakers to understand the mitigation mechanism of the air quality
292 and also will be useful for future research to control the SARS-CoV-2 virus as well as air quality.

293

294 **Acknowledgement**

295 Authors acknowledge the data support to Air visual (www.iqair.com), European space agency
296 (NO₂ satellite images), DGHS, Bangladesh (COVID-19 related data at www.dghs.gov.bd) and for
297 climate variables data (www.darksky.net and www.weatherforyou.com).

298

299 **Funding Support**

300 This research did not receive any specific grant from any funding agencies in the public,
301 commercial, or not-for-profit sectors. But we are using our research support of the Department of
302 Chemistry, University of Dhaka, Bangladesh.

303

304

305

306

307 **References**

- 308 Auler, A.C., Cássaro, F.A.M., da Silva, V.O., Pires, L.F. (2020). Evidence that high temperatures
309 and intermediate relative humidity might favor the spread of COVID-19 in tropical climate: A
310 case study for the most affected Brazilian cities. *Sci. Total Environ.* 729:139090.
311 doi.org/10.1016/j.scitotenv.2020.139090.
- 312 Bashir, M.F., Ma, B., Bilal, Komal, B., Bashir, M.A., Tan, D., Bashir, M. (2020a). Correlation
313 between climate indicators and COVID-19 pandemic in New York, USA. *Sci. Total Environ.*
314 728:138835. doi.org/10.1016/j.scitotenv.2020.138835.
- 315 Bashir, M.F., Ma, B., Bilal, B.M., Komal, B., Bashir, M.A., Farooq, T.H., Iqbal, N., Bashir, M.
316 (2020b). Correlation between environmental pollution indicators and COVID-19 pandemic: A
317 brief study in Californian context. *Environ. Res.* 187:109652.
318 doi.org/10.1016/j.envres.2020.109652.
- 319 Bauwens, M., Compennolle, S., Stavrakou, T., Müller, J.□F., van Gent, J., Eskes, H., et al. (2020).
320 Impact of coronavirus outbreak on NO₂ pollution assessed using TROPOMI and OMI
321 observations. *Geophys. Res. Lett.* 47:11. <https://doi.org/10.1029/2020GL087978>.
- 322 Bukhari, Q., Jameel, Y. (2020). Will Coronavirus Pandemic Diminish by Summer? (March 17,
323 2020). SSRN. dx.doi.org/10.2139/ssrn.3556998.
- 324 Chauhan, A., Singh, R.P. (2020). Decline in PM_{2.5} concentrations over major cities around the
325 world associated with COVID-19. *Environ Res.* 187:109634.
326 doi.org/10.1016/j.envres.2020.109634.

- 327 Chen, B., Liang, H., Yuan, X., Hu, Y., Xu, M., Zhao, Y., Zhang, B., Tian, F., Zhu, X. (2020a).
328 Roles of Meteorological Conditions in COVID-19 Transmission on a World wide Scale.
329 medRxiv. doi.org/10.1101/2020.03.16.20037168.
- 330 Chen, K., Wang, M., Huang, C., Kinney, P.L., Anastas, P.T. (2020b). Air pollution reduction and
331 mortality benefit during the COVID-19 outbreak in China. *Lancet Planet. Health.* 4(6):210-212.
332 doi.org/10.1016/S2542-5196(20)30107-8.
- 333 Fattorini, D., Regoli F. (2020). Role of the chronic air pollution levels in the Covid-19 outbreak risk
334 in Italy. *Environ. Pollut.* 264:114732. doi.org/10.1016/j.envpol.2020.114732.
- 335 Hopkins, John. (2020). John Hopkins University of Medicine. Coronavirus Research Center. 20.
336 <https://coronavirus.jhu.edu/map.html> (Accessed April 17 2020).
- 337 IQAir, COVID-19 Air Quality Report. 2019 coronavirus pandemic lockdowns result in
338 unprecedented reductions in deadly particle pollution (Apr. 22, 2020).
339 [https://www2.iqair.com/sites/default/files/documents/REPORT-COVID-19-Impact-on-Air-](https://www2.iqair.com/sites/default/files/documents/REPORT-COVID-19-Impact-on-Air-Quality-in-10-Major-Cities_V6.pdf)
340 [Quality-in-10-Major-Cities_V6.pdf](https://www2.iqair.com/sites/default/files/documents/REPORT-COVID-19-Impact-on-Air-Quality-in-10-Major-Cities_V6.pdf).
- 341 Le, T., Wang, Y., Liu, L., Yang, J., Yung, Y.L., Li, G., Seinfeld, J.H. (2020). Unexpected air
342 pollution with marked emission reductions during the COVID-19 outbreak in China. *Science.*
343 doi.10.1126/science.abb7431.
- 344 Le Quéré, C., Jackson, R.B., Jones, M.W., Smith, A.J.P., Abernethy, S., Andrew, R.M., De-Goll,
345 A.J., Willis, D.R., Shan, Y., Canadell, J.G., Friedlingstein, P., Creutzig, F., Peters, G.P. (2020).
346 Temporary reduction in daily global CO₂ emissions during the COVID-19 forced confinement.
347 *Nat. Clim. Chang.* 10:647–653. <https://doi.org/10.1038/s41558-020-0797-x>.

348 Li, Q., Guan, X., Wu, P., Wang, X., Zhou, L., Tong, Y., Ren, R., Leung, K.S.M., Lau, E.H.Y.,
349 Wong, J.Y., Xing, X., Xiang, N., Wu, Y., Li, C., Chen, Q., Li, D., Liu, T., Zhao, J., Liu, M., Tu,
350 W., Chen, C., Jin, L., Yang, R., Wang, Q., Zhou, S., Wang, R., Liu, H., Luo, Y., Liu, Y., Shao,
351 G., Li, H., Tao, Z., Yang, Y., Deng, Z., Liu, B., Ma, Z., Zhang, Y., Shi, G., Lam, T.T.Y., Wu,
352 J.T., Gao, G.F., Cowling, B.J., Yang, B., Leung, G.M., Feng, G. (2020). Early transmission
353 dynamics in Wuhan, China, of novel coronavirus infected pneumonia. *N. Engl. J. Med.*
354 382:1199-1207. doi.org/10.1056/NEJMoa2001316. NEJMoa2001316.

355 Liu, Y., Ning, Z., Chen, Y., Guo, M., Liu, Y., Gali, N.K., Sun, L., Duan, Y., Cai, J., Westerdah, D.,
356 Liu, X., Xu, K., Ho, K.-F., Kan, H., Fu, Q., Lan, K. (2020). Aerodynamic analysis of SARS-
357 CoV-2 in two Wuhan hospitals. *Nature*. 582:557–560. doi.org/10.1038/s41586-020-2271-3.

358 Ma, Y., Zhao, Y., Liu, J., He, X., Wang, B., Fu, S., Yan, J., Niu, J., Zhou, j., Luo, B. (2020).
359 Effects of temperature variation and humidity on the death of COVID-19 in Wuhan, China. *Sci.*
360 *Total Environ.* 724:139226. doi.org/10.1016/j.scitotenv.2020.138226.

361 Méndez-Arriaga, F. (2020). The temperature and regional climate effects on communitarian
362 COVID-19 contagion in Mexico throughout phase 1. *Sci. Total Environ.* 735:139860.
363 doi.org/10.1016/j.scitotenv.2020.139560.

364 Poole, L. (2020). Seasonal Influences On the spread of SARS-CoV-2 (COVID19), Causality, and
365 Forecast ability (3-15-2020). SSRN. dx.doi.org/10.2139/ssrn.3554746.

366 Rahman, M.M., Begum, B.A., Hopke, P.K, Nahar, K., Thurston, G.D. (2020). Assessing the PM_{2.5}
367 impact of biomass combustion in megacity Dhaka, Bangladesh. *Environ. Pollut.* 264:114798.
368 doi.org/10.1016/j.envpol.2020.114798.

- 369 Sajadi, M.M., Habibzadeh, Pa., Vintzileos, A., Shokouhi, S., Miralles-Wilhelm, F., Amoroso, A.
370 (2020). Temperature, Humidity and Latitude Analysis to Predict Potential Spread and Seasonality
371 for COVID-19. SSRN. dx.doi.org/10.2139/ssrn.3550308.
- 372 Salam, A., Bauer, H., Kassim, K., Mohammad Ullah, S., Puxbaum, H. (2003). Aerosol chemical
373 characteristics of a mega-city in Southeast Asia (Dhaka–Bangladesh). *Atmos. Environ.* 37:2517–
374 2528. [doi.org/10.1016/S1352-2310\(03\)00135-3](https://doi.org/10.1016/S1352-2310(03)00135-3).
- 375 Salam, A., Al Mamoon, H., Ullah, M.B., Ullah, S.M. (2012). Measurement of the atmospheric
376 aerosol particle size distribution in a highly polluted mega-city in Southeast Asia (Dhaka-
377 Bangladesh). *Atmos. Environ.* 59:338-343. doi.org/10.1016/j.atmosenv.2012.05.024.
- 378 Schiermeier, Q. (2020). Why pollution is falling in some cities- but not others. *Nature.* 580:313.
379 doi.org/10.1038/d41586-020-01049-6.
- 380 Sharma, S., Zhang, M., Anshika, Gao, J., Zhang, H., Kota, S.H. (2020). Effect of restricted
381 emissions during COVID-19 on air quality in India. *Sci. Total Environ.* 728:138878.
382 doi.org/10.1016/j.scitotenv.2020.138878.
- 383 Shereen, M.A., Khan, S., Kazmi, A., Bashir, N., Siddique, R. (2020). COVID-19 infection: origin,
384 transmission, and characteristics of human coronaviruses. *J. Adv. Res.* 24:91-98.
385 doi.org/10.1016/j.jare.2020.03.005.
- 386 Shi, P., Dong, Y., Yan, H., Li, X., Zhao, C., Liu, W., He, M., Tang, S., Xi, S. (2020). The Impact of
387 Temperature and Absolute Humidity on the Coronavirus Disease 2019 (COVID-19) Outbreak
388 Evidence from China. *medRxiv.* doi.org/10.1101/2020.03.22.20038919.

- 389 Sohrabi, C., Alsafi, Z., O'Neill, N., Khan, M., Kerwan, A., Al-Jabir, A., Iosifidis, C., Agha, R.
390 (2020). World Health Organization declares global emergency: a review of the 2019 novel
391 coronavirus (COVID-19). *Int. J. Surg.* 76:71-76. doi.org/ 10.1016/j.ijssu.2020.02.034.
- 392 Vandini, S., Corvaglia, L., Alessandroni, R., Aquilano, G., Marsico, C., Spinelli, M. (2013).
393 Respiratory syncytial virus infection in infants and correlation with meteorological factors and air
394 pollutants. *Ital. J. Pediatr.* 39(1). doi.org/10.1186/1824-7288-39-1.
- 395 Wang, D., Hu, B., Hu, C., Zhu, F., Liu, X., Zhang, J., Wang, B., Xiang, H., Cheng, Z., Xiong, Y.,
396 Zhao, Y., Li, Y., Wang, X., Peng, Z. (2020a). Clinical characteristics of 138 hospitalized patients
397 with 2019 novel coronavirus infected pneumonia in Wuhan, China. *J. Am. Med. Assoc.* 323
398 (11):1061. doi.org/10.1001/jama.2020.1585.
- 399 Wang, M., Jiang, A., Gong, L., Luo, L., Guo, W., Li, C., Zheng, J., Li, C., Yang, B., Zeng, J., Chen,
400 Y., Zheng, K., Li, H. (2020b). Temperature Significant Change COVID-19 Transmission in 429
401 Cities. medRxiv. doi.org/10.1101/2020.02.22.20025791.
- 402 WHO Director. (2020a). General's Remarks at the Media Briefing on 2019-nCoV on 11 February
403 2020. [www.who.int/dg/speeches/detail/who-director-generals-remarks-at-the-media-briefing-on-](http://www.who.int/dg/speeches/detail/who-director-generals-remarks-at-the-media-briefing-on-2019-ncov-on-11-february-2020)
404 [2019-ncov-on-11-february-2020](http://www.who.int/dg/speeches/detail/who-director-generals-remarks-at-the-media-briefing-on-2019-ncov-on-11-february-2020).
- 405 WHO Director. (2020b). General's Opening Remarks at the Media Briefing on COVID19 on 11
406 March 2020. [www.who.int/dg/speeches/detail/whodirector-general-s-opening-remarks-at-the-](http://www.who.int/dg/speeches/detail/whodirector-general-s-opening-remarks-at-the-media-briefing-on-covid-19-11march-2020)
407 [media-briefing-on-covid-19-11march-2020](http://www.who.int/dg/speeches/detail/whodirector-general-s-opening-remarks-at-the-media-briefing-on-covid-19-11march-2020).
- 408 Wu, F., Zhao, S., Yu, B., Chen, Y.-M., Wang, W., Song, Z.-G., Tao, Z.-W., Tian, J.-H., Pei, Y.-Y.,
409 Yuan, M.-L., Zhang, Y.-L., Dai, F.-H., Liu, Y., Wang, Q.-M., Zheng, J.-J., Xu, L., Holmes, E.C.,

- 410 Zhang, Y.-Z. (2020a). A new coronavirus associated with human respiratory disease in China.
411 Nature. 579(7798):265-269. doi.org/10.1038/s41586-020-2008-3.
- 412 Wu, X., Nethery, R. C., Sabath, B. M., Braun, D., and Dominici, F. (2020b). Exposure to air
413 pollution and COVID-19 mortality in the United States: A nationwide cross-sectional study.
414 medRxiv. doi.org/10.1101/2020.04.05.20054502.
- 415 Xu, B., Gutierrez, B., Mekaru, S., Sewalk, K., Goodwin, L., Loskyll, A., Cohn, E.L., Hswen, Y.,
416 Hill, S.C., Cobo, M.M., Zarebski, A.E., Li, S., Wu, C.-H., Hulland, E., Morgan, J.D., Wang, L.,
417 O'Brien, K., Scarpino, S.V., Brownstein, J.S., Pybus, O.G., Pigott, D.M., Kraemer, M.U.G.
418 (2020). Epidemiological data from the COVID-19 outbreak, real-time case information.
419 Scientific Data. 7(1). doi.org/10.1038/s41597-020-0448-0.
- 420 Yao, Y., Pan, J., Wang, W., Liu, Z., Kan, H., Qiu, Y., Meng, X., Wang, W. (2020). Association of
421 particulate matter pollution and case fatality rate of COVID-19 in 49 Chinese cities. Sci. Total
422 Environ. In Press, Journal Pre-proof. doi.org/10.1016/j.scitotenv.2020.140396.
- 423 Zoran, M.A., Savastru, R.S., Savastru, D.M., Tautan, M.N. (2020). Assessing the relationship
424 between surface levels of PM_{2.5} and PM₁₀ particulate matter impact on COVID-19 in Milan,
425 Italy. Sci. Total Environ. 738:139825. doi.org/10.1016/j.scitotenv.2020.139825.
- 426
427
428
429
430
431

432 **Table 1.** Summary of statistical values of air quality and climate variables from March 8 to June
433 16, 2020 in Dhaka University Area, Dhaka, Bangladesh.

	PM_{2.5} ($\mu\text{g m}^{-3}$)	PM₁₀ ($\mu\text{g m}^{-3}$)	CO₂ (ppm)	Temp (°C)	Humidity (%)	Rainfall (inch hour ⁻¹)	Wind velocity (m h ⁻¹)
Average	65.0	87.1	427.5	29.3	73.8	0.23	6.5
Median	57.8	76.8	425.1	29.4	76.0	0.08	6.0
S.D.	37.9	52.8	11.8	2.1	12.9	0.31	3.1
Max	207.4	272.6	465.8	33.6	99.8	1.59	18.3
Min	17.3	19.7	408.3	23.9	39.1	0.00	2.0

434

435

436

437

438

439

440

441

442

443

444

445 **Table 2.** Empirical results of correlation between air quality indicators and climate variables
 446 with total confirmed cases, new cases and mortality in Dhaka, Bangladesh.

	Parameters	Total Cases	New Cases	Mortality
Kendall Correlation Coefficient	PM _{2.5}	-0.350*	-0.234*	-0.306*
	PM ₁₀	-0.329*	-0.219**	-0.265*
	CO ₂	-0.312*	-0.315**	-0.256*
	AQI	-0.362*	-0.294*	-0.278*
	Average temperature	0.161	0.108	0.202**
	Relative humidity	0.282*	0.232*	0.141
	Wind velocity	0.031	0.060	0.035
	Rainfall	0.191**	0.159	0.095
Spearman Correlation Coefficient	PM _{2.5}	-0.523*	-0.351*	-0.438*
	PM ₁₀	-0.495*	-0.418*	-0.414*
	CO ₂	-0.426*	-0.445**	-0.376*
	AQI	-0.532*	-0.430*	-0.421*
	Average temperature	0.249**	0.158	0.309**
	Relative humidity	0.408*	0.324**	0.207
	Wind velocity	0.063	0.099	0.053
	Rainfall	0.303**	0.208	0.205

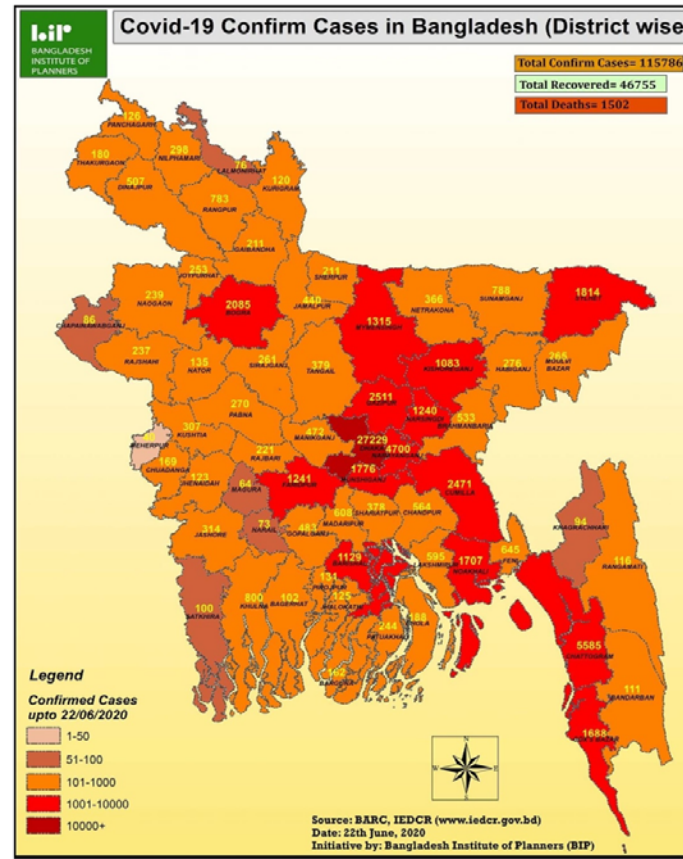
***, **, * indicate significance at levels of 10%, 5% and 1%.

447

448

449

450



451

452 **Fig. 1.** Distribution of COVID-19 confirmed cases in 64 districts of Bangladesh until June 22, 2020

453 (Source: Bangladesh Institute of Planners).

454

455

456

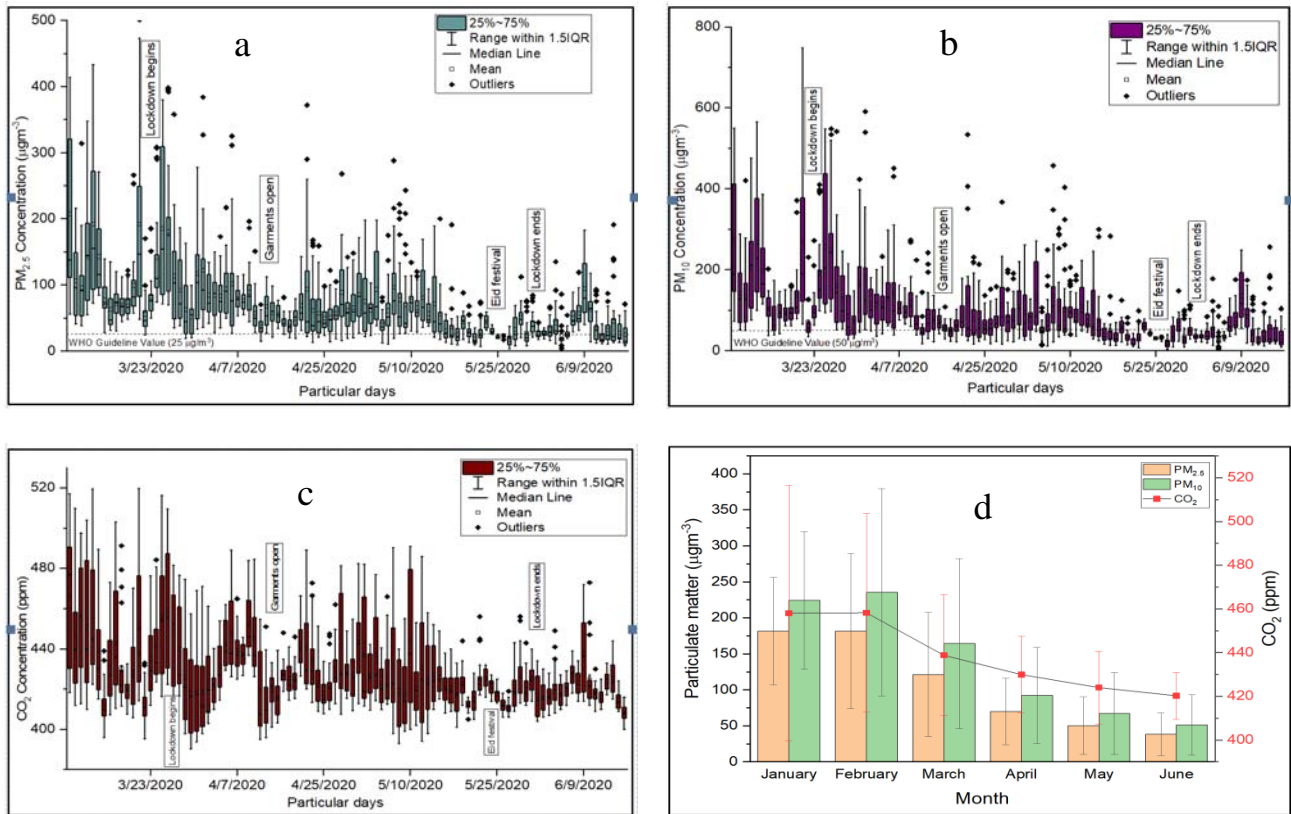
457

458

459

460

461



462

463 **Fig. 2.** (a, b, c). The daily average concentrations of PM_{2.5}, PM₁₀, and CO₂; and 2(d). Monthly
464 average concentrations of PM_{2.5}, PM₁₀, and CO₂ at Mukarram Hussain Khundker Building,
465 University of Dhaka, Bangladesh.

466

467

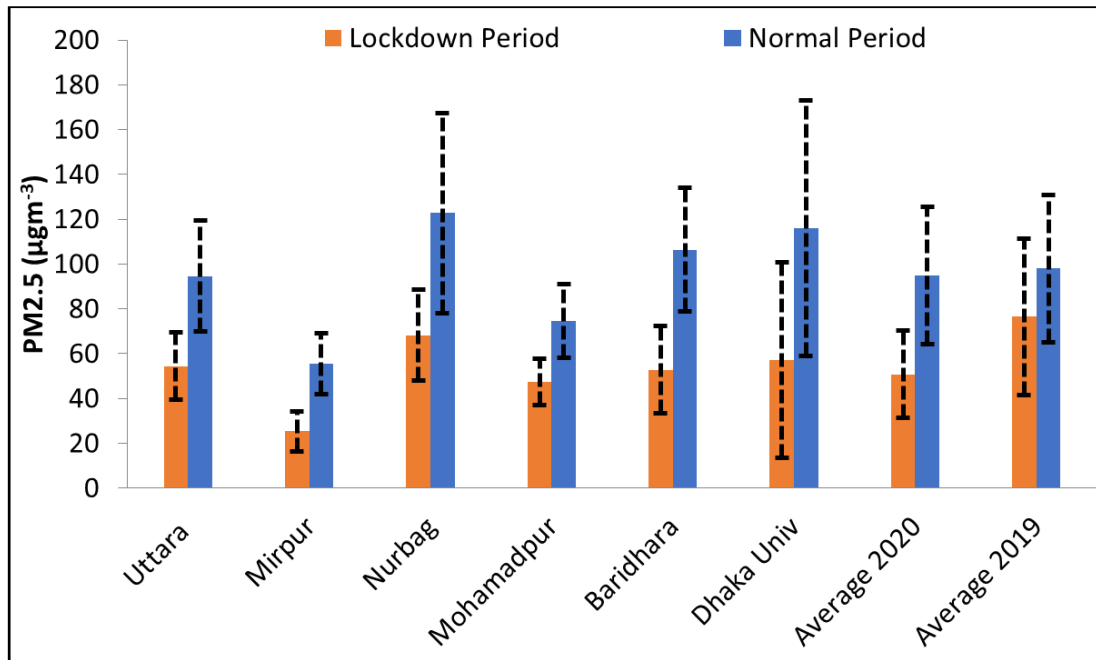
468

469

470

471

472



473

474 **Fig. 3.** PM_{2.5} concentrations between normal (March 16-27, 2020) and lockdown (March 28-May
475 30, 2020) periods at five different locations in Dhaka, Bangladesh. The average PM_{2.5}
476 concentrations of the same time period in 2019 have also been given for comparison.

477

478

479

480

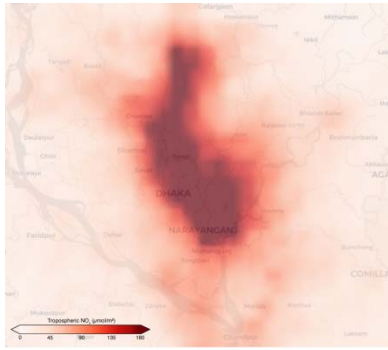
481

482

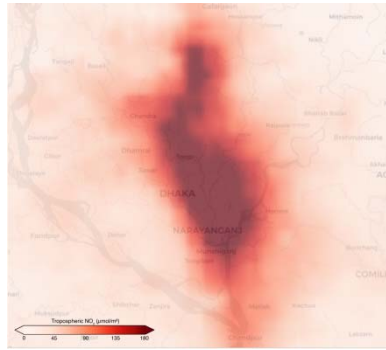
483

484

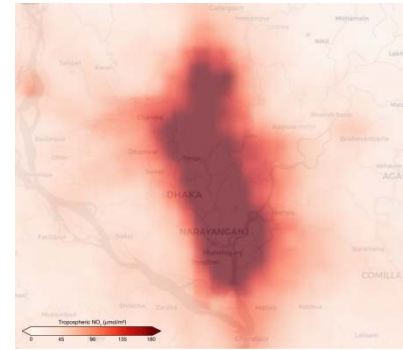
It is made available under a [CC-BY 4.0 International license](https://creativecommons.org/licenses/by/4.0/).



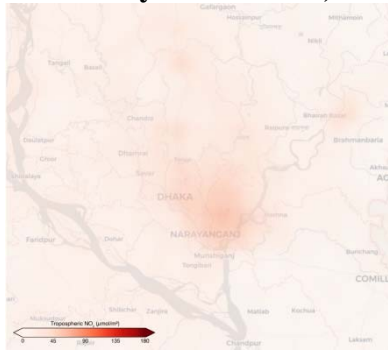
February 24-March 9, 2020



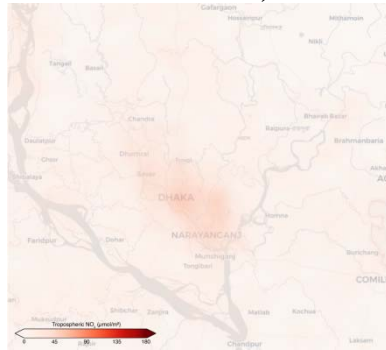
March 2-16, 2020



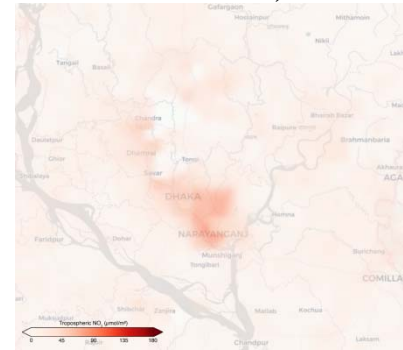
March 9-23, 2020



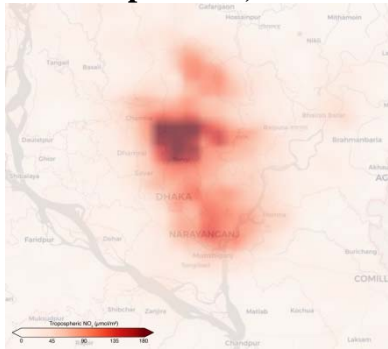
April 6-20, 2020



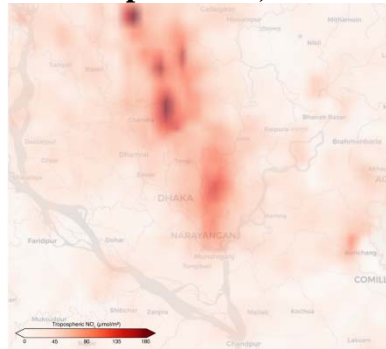
April 13-27, 2020



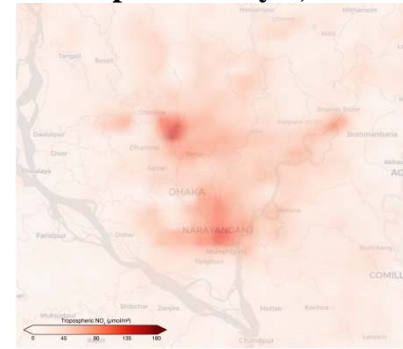
April 20-May 4, 2020



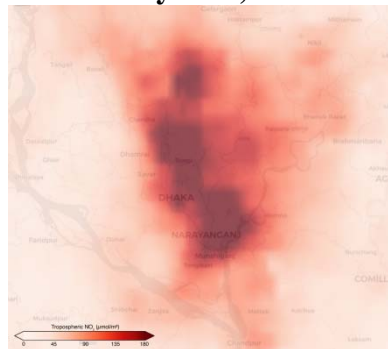
May 4-18, 2020



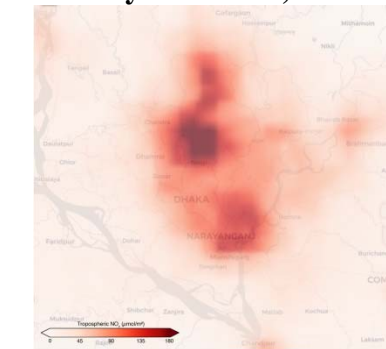
May 18-June 1, 2020



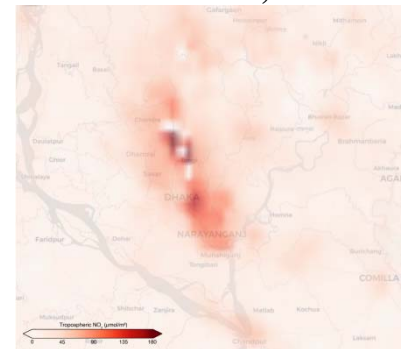
June 1-15, 2020



March 4-18, 2019

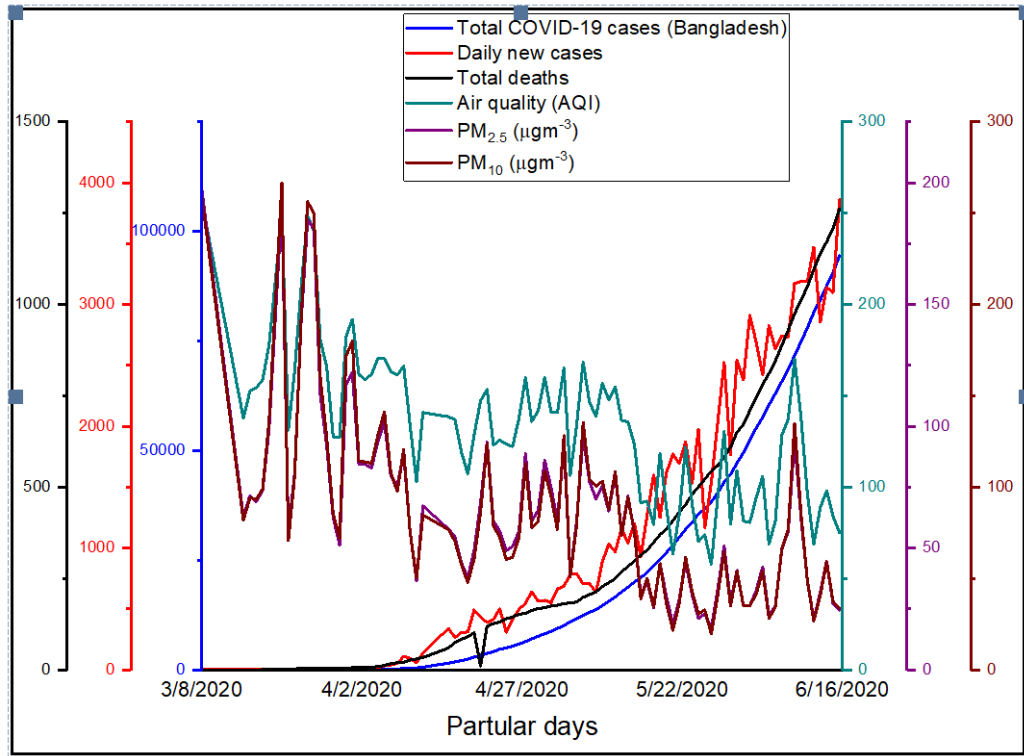


April 15-29, 2019



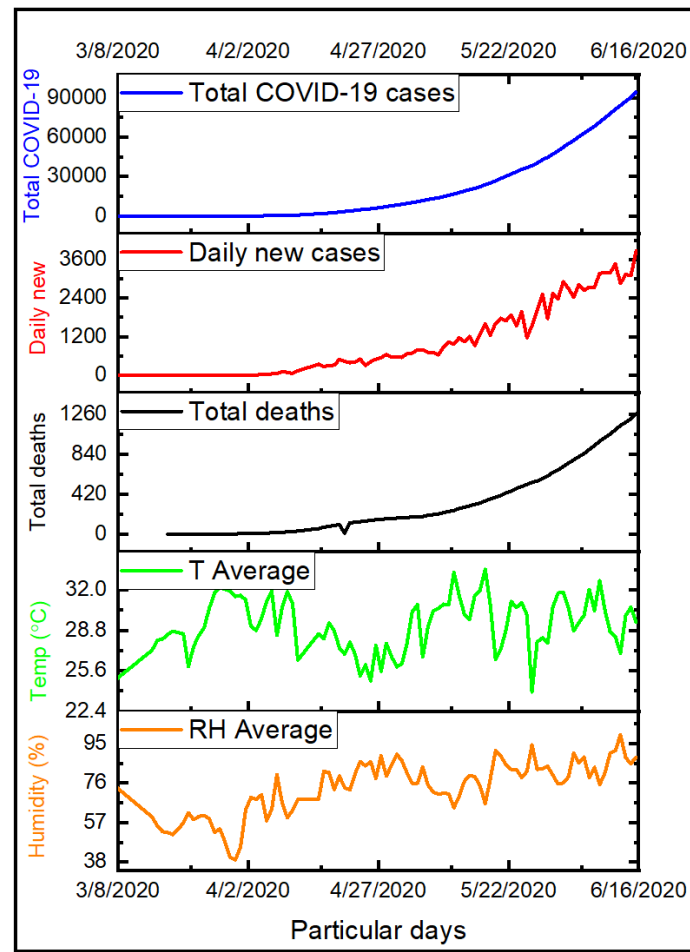
June 3-17, 2019

485 **Fig. 4.** NO₂ concentrations before COVID-19 lockdown (March 2020), during lockdown (April
486 2020) and after limited scale lockdown (May and June 2020), and bottom panel was from similar
487 time period but in 2019 over Dhaka, Bangladesh (Source: European Space Agency).
488



489
490 **Fig. 5.** Depiction of COVID-19 cases and air quality (PM_{2.5}, PM₁₀, AQI) from March 8 to June 16,
491 2020 in Bangladesh (Source: COVID-19 related data from Directorate General of Health Services,
492 DGHS, Bangladesh).
493
494
495
496
497

498



499

500

Fig. 6. Temporal variation of total number of COVID-19 cases, daily new cases, total deaths, daily

501

mean climate variables (average air temperature and relative humidity) in Bangladesh (Source:

502

COVID-19 related data from Directorate General of Health Services, DGHS, Bangladesh).

503

504