

1 **Title**

2 Passive surveillance assesses compliance with COVID-19 behavioral restrictions in a rural US county

3

4 **Authors**

5 Christina L Faust¹, Brian Lambert¹, Cale Kochenour¹, Anthony C. Robinson², Nita Bharti¹⁺

6

7 **Affiliations**

8 ¹Center for Infectious Disease Dynamics, Department of Biology, Eberly College of Science,
9 Pennsylvania State University, University Park, PA, USA

10 ²GeoVISTA Center, Department of Geography, College of Earth and Mineral Sciences, Pennsylvania
11 State University, University Park, PA, USA

12

13 **ORCID iDs**

14 Christina L. Faust <http://orcid.org/0000-0002-8824-7424>

15 Brian Lambert <http://orcid.org/0000-0002-8595-2726>

16 Cale Kochenour <http://orcid.org/0000-0002-1919-7216>

17 Anthony C. Robinson <http://orcid.org/0000-0002-5249-8010>

18 Nita Bharti <http://orcid.org/0000-0003-1940-7794>

19

20 **Correspondence to**

21 ⁺ W-253 Millennium Science Complex, University Park, PA 16802 nita@psu.edu

22

23 **Word count:** 3930

24 **Key words:** SARS-CoV-2, rural health, contacts, movement, behavioral restrictions

25 **Summary**

26 Following the emergence of SARS-CoV-2, early outbreak response relied on behavioral
27 interventions. In the United States, local governments implemented restrictions aimed at reducing
28 movements and contacts to limit viral transmission. In Pennsylvania, restrictions closed schools and
29 businesses in the spring of 2020 and interventions eased later through the summer. In a rural
30 Pennsylvania county, we use passive monitoring of vehicular traffic volume and mobile device
31 derived visits to points of interest as proxies for movements and contacts. Rural areas have limited
32 health care resources, which magnifies the importance of disease prevention. These data show the
33 lowest levels of movement occurred during the strictest phase of restrictions, indicating high levels
34 of compliance with behavioral intervention. We find that increases in movement correlated with
35 increases in SARS-CoV-2 cases 9-18 days later. The methodology used in this study can be adapted
36 to inform outbreak management strategies for other locations and future outbreaks that use
37 behavioral interventions to reduce pathogen transmission.

38

39

40 **Introduction**

41 Sudden Acute Respiratory Syndrome Coronavirus 2 (SARS-CoV-2), the virus that causes
42 Coronavirus Disease 2019 (COVID-19) was first detected in Wuhan, China, in December 2019 [1].
43 The WHO declared COVID-19 was a pandemic in March 2020 (Figure 1) [2]. COVID-19 is a
44 respiratory disease in humans and clinical presentation can include a variety of secondary
45 symptoms, including gastrointestinal and neurological, that range from mild to severe or fatal [3,4].
46 The virus is spread by respiratory droplets, which can occur through close contacts [5]. Infectious
47 individuals can be asymptomatic or mildly symptomatic [3]. Similar to early stages of other novel
48 emerging pathogens, targeted pharmaceutical interventions for SARS-CoV-2 were limited. Large
49 scale outbreak management efforts focused on behavioral interventions to reduce transmission [6–
50 8]. Assessing changes in movement levels, contacts, and potential transmission events can help
51 establish early warnings, implement adaptive control strategies, and disseminate preventative public
52 health messaging to slow transmission.

53 There are many ways to measure human populations and movement to inform disease transmission.
54 Data resolution varies across spatiotemporal scales, from targeted individual surveys and censuses
55 [9] to large-scale passive surveillance data generated by satellites [10] and mobile devices [11].
56 Estimates of human movement and contacts for disease management have included tracking
57 currency [12], commercial air traffic to model long distance flows [13], anthropogenic illumination
58 to quantify seasonal or long-term population changes [10,14,15], and mobile devices for mobility
59 traces [7,16,17]. Privately owned mobile device data are highly confidential and can't be shared
60 with policy makers. Researchers can obtain deidentified device data from third parties, which may
61 be expensive or rely on opaque, proprietary algorithms. To overcome limitations on data sharing
62 and increase replicability, we pair mobile device-derived data [18] with publicly available traffic
63 camera images to measure human movement.

64

65 Early in the pandemic in the United States, county-level reporting showed that large cities and well-
66 connected metro areas were hit the hardest. As the outbreak progressed, it characteristically moved
67 into smaller towns and rural areas across the country [19]. Connectivity *between* locations loosely
68 determines how early an infectious agent will arrive in a place and movement *within* a location
69 determines how rapidly it can spread locally [20]. To reduce transmission, many states within the
70 US introduced large scale quarantines targeting connectivity and movement. Understanding
71 movement and pathogen transmission in rural areas is important because rural movement patterns
72 differ from those found in urban areas [21,22] and residents in rural areas experience barriers to
73 health care access that are different from barriers in urban areas [23]. Rural residents in the US have
74 lower median household incomes and often rely on under-resourced health care services [24].

75

76 Centre County is located in rural valley in central Pennsylvania. It is home to The Pennsylvania
77 State University's (PSU) University Park (UP) campus, the largest campus of the state's largest
78 public institute of higher education. PSU is one of 112 land grant universities in the country. These
79 institutions were established with a focus on agricultural education and improvement and, like PSU,
80 many are still surrounded by suburban and rural areas. In 2019, the median US household income
81 was \$68,703 while the median Centre County, PA, household income was about 15% lower -
82 \$58,055 [25].

83

84 Prior to COVID-19, Centre County had 12 intensive care unit (ICU) beds, which increased to 24
85 during the pandemic [26]. Testing capacity remained severely limited throughout the US in 2020,
86 including in Centre County. Test results were returned with delays of days or weeks, which
87 hindered contact tracing efforts [27] and broad scale restrictions remained necessary.

88

89 Centre County, Pennsylvania, first implemented policies to minimize virus spread and transmission
90 in March, in the form of travel restrictions and stay at home orders (Figure 1; Table 1). We
91 monitored indicators of human movement in response to COVID-19 restrictions and the resulting
92 outbreak trajectories from March through mid-August 2020, focusing on times when the university
93 was not holding in-person classes and most students were not residing in the county. Our analysis
94 begins six weeks prior to the strictest restrictions and ends during 2020's most lenient county-level
95 restrictions.

96

97 We measured two proxies for movement within Centre County: vehicle volumes during the
98 pandemic from publicly accessible traffic cameras and two years of mobile device derived visits to
99 points of interest (POI) from SafeGraph [28]. Traffic volumes provide a good indication of
100 movement in rural areas, which lack public transit and rely on private vehicles, but likely
101 underrepresent movement in denser, pedestrian-heavy areas. Mobile device data likely under
102 sample the elderly and residents in areas with poor network coverage or speed but are likely to
103 adequately represent movement in the pedestrian-heavy areas on and surrounding university
104 campuses. An advantage of SafeGraph's ongoing passive surveillance is a long period of
105 observation that precedes the perturbations caused by the pandemic.

106

107 Using these two data sources and official case reports, we compared movement across restriction
108 phases to measure compliance and detect changes in confirmed SARS-CoV-2 cases. Overall, we
109 found that movement measured by traffic volumes and mobile device derived visits to POI
110 increased as restrictions eased, indicating compliance. We also found that cases increased as

111 movements increased with a 9- to 18- day lag, suggesting that compliance with behavioral
112 interventions was effective in reducing SARS-CoV-2 transmission.

113

114 The ongoing emergence of increasingly transmissible or virulent variants emphasizes the
115 importance of accurately measuring the uptake of behavioral interventions and estimating the
116 resulting impact on transmission dynamics. Our methods are broadly applicable across rural areas
117 that are managing transmissible pathogens with behavioral interventions. The approaches presented
118 here can inform outbreak management strategies on the effectiveness of strategies surrounding
119 around behavioral interventions going forward.

120

121 **Methods**

122 *Study area*

123 Centre County has an estimated population size of 162,000 residents [25] and approximately 38,000
124 of these residents are undergraduate students enrolled at PSU's UP campus [29]. Most
125 undergraduate students do not reside in the county year-round, leading to declines in student
126 population during the summer and winter breaks between semesters.

127

128 *Study period*

129 We used traffic cameras and mobile device-derived visits to POI to detect changes in movement,
130 with a focus on responses to restriction policies from 14 February 2020 to 14 August 2020 (Figure
131 1). We defined six temporal phases that align with events and policies that impacted movement and
132 behavior at PSU's UP campus and across Centre County in 2020 (Table 1, Figure 1):

133 1) **Baseline (14 February – 6 March)**: before restrictions were in effect and while
134 undergraduate students were on campus

135 2) **Population Decline (7 March – 18 March)**: before local restrictions were in effect, after
136 students left campus for spring break, and encompassing the transition to online instruction
137 on March 16th

138 3) **Local Restrictions (19 March – 27 March)**: Mandated closure of all non-essential
139 businesses (no county-wide restrictions)

140 4) **Red (28 March– 7 May)**: County-wide Red restriction phase

141 5) **Yellow (8 May 8 – 28 May)**: County-wide Yellow restriction phase

142 6) **Green (29 May 29 – 14 August)**: County-wide Green restriction phase

143

144 The calendar dates defining the Baseline (1), Local Restrictions (3), and Red (4) phases in 2020
145 occurred during the spring semester, which correspond to dates in 2019 when undergraduate
146 students were in residence in Centre County. The Population Decline (2), Yellow (5), and Green (6)
147 phases of 2020 coincided with times when semester classes were not in session in 2019 (spring
148 break or summer session) and the student population in Centre County was drastically smaller. In
149 2020, students left campus during the Population Decline phase for spring break and were instructed
150 not to return because the university implemented COVID-19 prevention policy to transition to
151 online instruction from 16 March 2020.

152

153 To measure changes in movement through the restriction phases of 2020, we collected traffic data
154 from 26 April 2020 to 14 August 2020. To measure changes in movement between years, we used
155 SafeGraph mobile device derived counts of visits to POI from 14 February 2020 to 14 August 2020
156 and the corresponding periods in 2019 [28]. Pennsylvania began reporting confirmed SARS-CoV-2
157 cases on 1 March 2020 [30].

158

159 *Traffic Cameras*

160 We collected images from 19 traffic cameras across Centre County to quantify numbers of vehicles
161 on roads beginning on 26 April 2020 (Figure 2A). Twelve of these cameras surveil interstates, state
162 highways, or other roads that link towns in Centre County, which we refer to as ‘connector’ roads
163 (Table S1). The remaining seven cameras capture ‘internal’ roads for travel within towns. Cameras
164 produce 24-hour live streams that are publicly accessible online but are not archived. We captured
165 and stored images from these live streams approximately every 20 seconds. Using the Python
166 package *cvlib* as a high-level interface to OpenCV [31,32] and Google’s open source TensorFlow
167 software stack [33], we identified and counted all vehicles in each image. Parked vehicles were
168 identified and excluded. The hourly number of vehicles captured by each camera was standardized
169 by the number of images captured within that hour (see SM for details).

170
171 We fit a series of generalized additive models (GAMs) to the standardized hourly vehicle counts.
172 The effect of hour of the day in local time was modelled as a cyclic cubic regression spline to
173 account for the continuity of the variable, meaning the same smoother operated at the 12:00 am
174 ‘start’ of a day and the 11:00 pm ‘end’ of a day (Figure S1). We included the following predictor
175 variables, with interactions between variables: day of week, weekday/weekend (binary variable),
176 restriction phase (red/yellow/green), camera identity, number of lanes visible in camera image, and
177 road type (internal or connector road). We fit multivariate GAMs using the package *mgcv* in R
178 version 3.6.2 [34,35]. Most of the traffic cameras experienced at least one short gap in image
179 acquisition (Figure S2). Missing hourly data were predicted using the best fit GAM. The combined
180 data (both observed and predicted) were used to estimate vehicle traffic volumes and assess changes
181 between restriction phases.

182

183 *Mobile device derived data*

184 [SafeGraph](#), a data company, provides aggregated anonymized location data from numerous
185 applications in order to provide insights about physical places, here referred to as points of interests
186 (POIs), via the [Placekey](#) Community. These data include mobile device derived counts of daily
187 visits to POI (businesses, offices, university buildings, etc.). They sample visits from 45 million
188 mobile devices across the United States to 3.6 million points of interest and their sampling
189 correlates with census-derived population sizes [28]. In 2020, SafeGraph collected data in Centre
190 County on 3,248,064 visit counts to 2,188 POI from a weekly mean of 5,165 mobile devices (range
191 2,993-7,831).

192

193 We used data collected in Centre County from 2019 and 2020. We used daily visit counts from
194 early in 2020 before any COVID-19 restrictions were imposed, to establish expected visit counts
195 during times when students were present and absent, in the Baseline and Population Decline phases,
196 respectively. We used the differences to establish expected visits for comparison to observed visit
197 counts while accounting for annual growth in SafeGraph data collection. These expectations help us
198 quantify the changes in movements that were caused by the pandemic. To quantify the changes in
199 movement through the restriction phases, we subtracted 2020 visit counts from 2019 visit counts.
200 We aligned dates from 2019 to the corresponding academic periods in 2020 to account for
201 differences in calendar dates (Table S1; [36]). We compared the differences in visit counts between
202 years to the expected visit counts from early 2020 to quantify the observed different in visit counts
203 due to behavioral interventions.

204

205 *COVID-19 diagnostic testing results*

206 We acquired total daily confirmed cases of COVID-19 in Centre County and the surrounding
207 counties from the Pennsylvania Department of Health's version of the National Electronic Disease
208 Surveillance System [30]. Cases are confirmed using CDC-approved diagnostic reverse
209 transcriptase polymerase chain reaction (RT-PCR) tests, which detect viral RNA in active
210 infections. The case data included here extend to 27 August 2020, two weeks past the last date of
211 inclusion for movement data and transmission events in this study. We included this two week lag
212 to account for a 5 to 8 day incubation period [37] and 5.5 to 10.93 day delay from the onset of
213 symptoms to case confirmation [3]. We used cross correlation analyses to identify significant time-
214 lagged correlations between movement measurements and the 7-day moving average of reported
215 cases. We used the 7-day moving average of incidence because large numbers of positive test
216 results reported on a single day may be due to tests that were processed in batches, which do not
217 necessarily reflect a single-day increase in cases.

218

219 **Results**

220 *Changes in traffic volume through restriction phases*

221 Throughout restriction phases, from 26 April 2020 forward, daily traffic volume followed a bell-
222 shaped pattern, with minimal traffic at 02:00 h and peaks between 12:00 and 18:00 h (Figure 2B,
223 Figure S1). The best-fit Poisson GAM included splines fit to hourly average vehicle counts per
224 camera, a binary weekend predictor, intervention phase, and an interaction between phase and road
225 type (connector or local). This model explained 87.3% of deviance observed in vehicle traffic.

226

227 From April to August, Pennsylvania's county-level behavioral restriction phases eased twice and
228 traffic volume increased significantly. We observed greater increases in numbers of vehicles during
229 weekdays and on connector roads than during weekends or on local roads (Figure 2B,C). During the

230 Red phase, we calculated a daily weekday mean of 10,772 vehicles on internal roads and 7,397
231 vehicles on connector roads (Table S3). After Centre County eased to the Yellow phase of
232 restrictions, mean daily weekday traffic totals increased by 23.2% on internal roads (an increase of
233 2,495 vehicles on weekdays) and 31.5% on connector roads (an increase of 2,331 vehicles on
234 weekdays). When the county transitioned from the Yellow to the Green phase of restrictions, we
235 saw an additional 15.4% increase in daily weekday traffic on internal roads (an increase of 2,042
236 vehicles on weekdays), and a 27.8% increase in vehicles on connector roads (an additional 2,697
237 vehicles on weekdays).

238

239 *Changes in mobile device derived visit counts between years and through 2020 restriction phases*

240 Visit counts in 2020 were highest during the Baseline phase, when students were present (median
241 daily visit count = 18,220) (Figure S3). When compared to the same period in 2019, there were
242 more visits in 2020 (median difference = +4,613 in 2020)(Figure 3). Visit counts in 2020 began to
243 decrease after the Baseline phase, during the Population Decline phase in March. This decline
244 occurred when students departed for spring break and was matched by declines in 2019 (daily
245 median differential of +464 visits in 2020). In 2019, visit counts increased immediately following
246 spring break due to the return of students, while in 2020 the visit counts continued to decline due to
247 the university's pandemic protocol.

248

249 The largest negative differential between 2019 and 2020 visit counts occurred during the Red phase,
250 reflecting the combined effects of the strictest restrictions in Centre County and the 2020 deficit of
251 the student population (Figure 3, Figure 4B). Visit counts increased, reducing visit differentials
252 during the Yellow and Green phases of restrictions. However, 2020 summer visit counts never

253 reached 2019 values or expected visit counts based on pre-pandemic behavior from 2020, indicating
254 ongoing and sustained changes in movement as measured by mobile devices in Centre County.

255

256 *Correlations between reported cases and movement*

257 Daily COVID-19 case totals were low in Centre County throughout the summer of 2020 compared
258 to urban and more populous counties in Pennsylvania [30]. Through 27 August 2020, Centre
259 County confirmed a total of 448 cases, or 358.6 cases per 100,000 [30]. Daily incidence showed
260 asynchronous outbreaks among neighboring counties in central Pennsylvania (Figure 1). In Centre
261 County, increases in movement preceded reported cases (Figure 4). We find a significant correlation
262 between traffic and a 7-day moving average of cases, with a 9-day lag in cases showing the greatest
263 significance (ACF = 0.344, $p < 0.05$; Fig 4a, d). Additionally, we find a significant lagged
264 correlation with mobile device visits to POI to reported cases. There is a significant lag from 28- to
265 7-days prior to cases, but the greatest correlation occurs at a 19-day lag (ACF = 0.518, $p < 0.05$)
266 (Figure 4b, e).

267

268 **Discussion**

269 *Overview*

270 Behavioral interventions were the primary large-scale public health tool available for preventing
271 SARS-CoV-2 transmission throughout most of 2020. Behavioral interventions are most effective
272 when implemented early and broadly. They are particularly important in areas where supportive
273 care and medical resources are insufficient. Measuring levels of uptake of behavioral interventions
274 is considerably more challenging than measuring uptake of pharmaceutical interventions but is
275 critical for assessing current effectiveness and planning future outbreak response efforts. We used
276 publicly available traffic volume and mobile device derived visits to POI to measure behavioral

277 responses to COVID-19 restrictions in a rural county in central Pennsylvania. These data sources
278 can be used to monitor movement, compliance with behavioral interventions, and adapt mitigation
279 strategies in the future.

280

281 *Traffic and mobile devices*

282 Data collected passively from traffic cameras measured movement in response to phased restriction
283 policies. In Centre County, local roads provide access to essential businesses, which remained open
284 throughout all restriction phases, while connector roads are used for travel between locations and
285 may reflect movements to return to business, childcare and in-person work (i.e. during County
286 Green phase). As restrictions eased, both local and connector vehicle volume increased, with greater
287 increases on connector roads, particularly in the later Green phase. Although changes in restriction
288 phases were announced approximately one week in advance, traffic volumes increased on the date
289 that restrictions officially eased, and were not observed earlier. These results suggest that Centre
290 County residents largely complied with county-level restrictions. However, this region did not
291 transition from a less restrictive phase to a more restrictive phase during the period studied so
292 compliance with enforcing stricter restriction phases cannot be assessed.

293

294 Daily SafeGraph mobile device derived visit counts and traffic volume showed similar patterns:
295 movement gradually increased from the Red phase to the Yellow phase and Green phase.

296 SafeGraph data were also critical in providing movement data from 2020 for dates prior to the
297 implementation of restrictions phases as well as for corresponding dates from 2019. Data prior to
298 the Red phase are not available for traffic volumes.

299

300 In the Red Phase of 2020, mobile device visit counts decreased by 81% compared to the baseline
301 period of 2020. While some of this is due to the absence of students following spring break, these
302 visit counts are still lower than visit counts from 2020 during pre-pandemic times when students
303 were not in residence as well as the corresponding dates for 2019. The Green phase brought an
304 increase in daily visit counts but the median daily visit count was still 11% lower than expected
305 based on 2020 visit counts that preceded pandemic restrictions and lower than the corresponding
306 time period in 2019. With SafeGraph's longitudinal data, we were able to highlight compliance with
307 restriction policies and calculate that visit counts in Centre County did not return to pre-pandemic
308 levels during the summer of 2020, even as restrictions eased.

309

310 In Centre County, we collected data on more cars per day (mean for Red and Green phases) than
311 mobile devices per day (mean for Red and Green phases), indicating the traffic data provide a better
312 representation of the total county population than SafeGraph data. However, the differences in
313 mobile device counts between the baseline and population decline periods of 2019 and 2020 show
314 that SafeGraph data represent better students than residents. From March to August of 2019, the
315 maximum mobile device visit counts from Centre County reflected known academic calendar
316 events and university or community events near or on PSU's UP campus (Figure S3).

317

318 *Movement and cases*

319 Increases in movement following easing restrictions likely led to increased contacts and contributed
320 to the subsequent uptick in cases during the green phase in Centre County. The bimodal pattern of
321 infections in the summer most likely reflects increased SARS-CoV-2 transmission. We demonstrate
322 a significant lag between movement measured by traffic and SafeGraph data and reported cases.

323 Traffic data show significant lags and leads with reported COVID-19 cases. This is likely because

324 the study period of the initial phase of the outbreak included increases in movement and cases and
325 no decreases. SafeGraph data, which covered periods of declining and increasing movement only
326 showed significant lags with cases. The significant lags between movement and cases highlight that
327 movement underlies increases in transmission and precedes increases in reported cases by about two
328 weeks. This provides an actionable metric for proactive policy, preventive actions, and modifying
329 behavioral restrictions.

330

331 *Rural health*

332 Many methods that are commonly used to track population movements are more effective in urban
333 areas than in rural areas. Some methods rely on high smartphone usership and wireless network
334 penetration or widespread and equitable access to high speed internet. Satellite based surveillance
335 performs best on dense settlements with minimal cloud days. Due to high numbers of cloud days
336 and small, sparse settlements, we could not measure these rural population dynamics with serial
337 satellite imagery. However, we expect that any single data source cannot adequately represent a
338 population, particularly a rural settlement. We intentionally used multiple, independently collected
339 datasets to measure local movement patterns.

340

341 Urban population dynamics are often easier to measure than rural populations. Overall, urban
342 populations also have greater access to health care, despite inequities within populations. They also
343 have better-resourced, higher capacity health care centers when compared to rural areas throughout
344 the United States, which improves pathogen surveillance and diagnostics. Rural populations
345 experience vulnerabilities and uncertainties in health care that must be uniquely assessed and
346 addressed. The COVID-19 pandemic has highlighted the necessity of locally responsive
347 interventions. Due to reduced connectivity to populous locations, small towns experienced delayed

348 SARS-CoV-2 introductions and lagged local outbreaks compared to urban centers [38]. Statewide
349 regulations largely responded to urban outbreak fluctuations, which were not synchronized with
350 rural outbreaks. When paired with effective federal response and relief, local oversight can most
351 effectively serve outbreak response, management, and planning efforts.

352

353 **Conclusion**

354 Early responses to the SARS-CoV-2 pandemic in the United States were managed by local
355 governments implementing policies at state and county levels with insufficient resources or
356 enforcement authority. COVID-19 spread widely through the nation's big cities and small towns.
357 Moving forward, it will be important to monitor local outbreaks and movement to design and
358 implement locally responsive interventions. In addition to pharmaceutical interventions, measuring
359 local population movements through passive approaches can help estimate uptake of behavioral
360 interventions and adapt policies that target transmission prevention. Monitoring local movements
361 and contacts is necessary to assess the impact of behavioral interventions intended to reduce
362 pathogen transmission. Informed current and future uses of movement restrictions can help avoid
363 overwhelming health care capacity, particularly in rural areas.

364

365 **Supplementary material**

366 The supplementary material for this article includes supplementary methods, figures S1-S3, and
367 tables S1-S3.

368

369 **Acknowledgements**

370 We thank the Pennsylvania Department of Transportation and the Pennsylvania Department of Health
371 for providing publicly available data. We acknowledge financial support from Penn State University's

372 Huck Institutes of the Life Sciences and the Institute for Computational and Data Sciences. The
373 funding sources had no role in the design, execution or interpretation of the results presented here.

374

375 **Conflicts of Interest:** None

376

377 **Ethics Statement**

378 No ethical approval was required. The research used datasets that were freely available in the public
379 domain. SafeGraph data are anonymized and aggregated.

380

381 **Data availability statement**

382 All data used for this study are available from publicly available sources and are attributed in the
383 methods section. No additional data has been generated by this study. Code to process raw data,
384 generate models and figures are available at: https://github.com/bhartilab/covid_movement_centre

385

386 **References**

- 387 1. **Zhu N, et al.** A novel coronavirus from patients with pneumonia in China, 2019. *New England*
388 *Journal of Medicine* 2020; **382**: 727-733.
- 389 2. **Cucinotta D, Vanelli M.** WHO Declares COVID-19 a Pandemic. *Acta Biomed* 2020; **91**: 157–
390 160.
- 391 3. **Li R, et al.** Substantial undocumented infection facilitates the rapid dissemination of novel
392 coronavirus (SARS-CoV-2). *Science* 2020; **368**: 489–493.
- 393 4. **Guan W, et al.** Clinical characteristics of coronavirus disease 2019 in China. *New England*
394 *Journal of Medicine* 2020; **382**: 1708–1720.
- 395 5. **World Health Organization.** *Modes of transmission of virus causing COVID-19: implications*
396 *for IPC precaution recommendations.* 2020; [https://www.who.int/news-](https://www.who.int/news-room/commentaries/detail/modes-of-transmission-of-virus-causing-covid-19-implications-for-ipc-precaution-recommendations)
397 [room/commentaries/detail/modes-of-transmission-of-virus-causing-covid-19-implications-for-](https://www.who.int/news-room/commentaries/detail/modes-of-transmission-of-virus-causing-covid-19-implications-for-ipc-precaution-recommendations)
398 [ipc-precaution-recommendations](https://www.who.int/news-room/commentaries/detail/modes-of-transmission-of-virus-causing-covid-19-implications-for-ipc-precaution-recommendations)

- 399 6. **Hatchett RJ, Mecher CE, Lipsitch M.** Public health interventions and epidemic intensity
400 during the 1918 influenza pandemic. *Proceedings of the National Academy of Sciences* 2007;
401 **104**: 7582–7587.
- 402 7. **Kraemer MU, et al.** The effect of human mobility and control measures on the COVID-19
403 epidemic in China. *Science* 2020; **368**: 493–497.
- 404 8. **Zhang J, et al.** Changes in contact patterns shape the dynamics of the COVID-19 outbreak in
405 China. *Science* 2020; **368**: 1481.
- 406 9. **Tatem AJ, et al.** Mapping populations at risk: improving spatial demographic data for
407 infectious disease modeling and metric derivation. *Population Health Metrics* 2012; **10**: 1–14.
- 408 10. **Sutton P, et al.** Census from Heaven: An estimate of the global human population using night-
409 time satellite imagery. *International Journal of Remote Sensing* 2001; **22**: 3061–3076.
- 410 11. **Gonzalez MC, Hidalgo CA, Barabasi A-L.** Understanding individual human mobility
411 patterns. *Nature* 2008; **453**: 779–782.
- 412 12. **Brockmann D, Hufnagel L, Geisel T.** The scaling laws of human travel. *Nature* 2006; **439**:
413 462–465.
- 414 13. **Colizza V, et al.** The role of the airline transportation network in the prediction and
415 predictability of global epidemics. *Proceedings of the National Academy of Sciences* 2006; **103**:
416 2015–2020.
- 417 14. **Bharti N, et al.** Explaining seasonal fluctuations of measles in Niger using nighttime lights
418 imagery. *Science* 2011; **334**: 1424–1427.
- 419 15. **Bharti N, et al.** Measuring populations to improve vaccination coverage. *Scientific Reports*
420 2016; **6**: 34541.
- 421 16. **Bengtsson L, et al.** Improved Response to Disasters and Outbreaks by Tracking Population
422 Movements with Mobile Phone Network Data: A Post-Earthquake Geospatial Study in Haiti.
423 Gething PW, ed. *PLoS Medicine* 2011; **8**: e1001083.
- 424 17. **Tatem AJ, et al.** The use of mobile phone data for the estimation of the travel patterns and
425 imported *P. falciparum* rates among Zanzibar residents. *Malaria Journal* 2009; **8**: 12.
- 426 18. **Chang S, et al.** Mobility network models of COVID-19 explain inequities and inform
427 reopening. *Nature* 202; **589**: 82-87
- 428 19. **Viboud C, et al.** Synchrony, waves, and spatial hierarchies in the spread of influenza. *Science*
429 2006; **312**: 447–451.
- 430 20. **Grenfell BT, Bolker B.** Cities and villages: infection hierarchies in a measles metapopulation.
431 *Ecology Letters* 2008; **1**: 63–70.

- 432 21. **Li Q, et al.** Disparate patterns of movements and visits to points of interest located in urban
433 hotspots across US metropolitan cities during COVID-19. *Royal Society Open Science*, 2021; **8**:
434 201209.
- 435 22. **Rajput AA, et al.** Revealing Critical Characteristics of Mobility Patterns in New York City
436 during the Onset of COVID-19 Pandemic. *arXiv* 2021; *preprint arXiv:2102.01918*.
- 437 23. **Douthit N, et al.** Exposing some important barriers to health care access in the rural USA.
438 *Public Health* 2015; **129**: 611–620.
- 439 24. **Strasser R.** Rural health around the world: challenges and solutions. *Family Practice* 2003; **20**:
440 457–463.
- 441 25. **United States Census Bureau.** *QuickFacts: Centre County, Pennsylvania*. 2019.
442 <https://www.census.gov/quickfacts/centrecountypennsylvania>
- 443 26. **Department of Health.** *COVID-19 Aggregate Hospitalizations Current Daily County Health*.
444 <https://data.pa.gov/Health/COVID-19-Aggregate-Hospitalizations-Current-Daily-/kayn-sjhx>
- 445 27. **Kretzschmar ME, et al.** Impact of delays on effectiveness of contact tracing strategies for
446 COVID-19: a modelling study. *The Lancet Public Health* 2020; **5**: e452–e459.
- 447 28. **SafeGraph.** *SafeGraph Data for Academics*. 2021. <https://www.safegraph.com/academics>
- 448 29. **Penn State University.** *Penn State Undergraduate Admissions. Admissions Statistics*. 2020.
449 <https://admissions.psu.edu/apply/statistics/>
- 450 30. **Pennsylvania National Electronic Disease Surveillance S.** COVID-19 Data for Pennsylvania.
451 <https://data.pa.gov/Health/COVID-19-Aggregate-Cases-Current-Daily-County-Heal/j72v-r42c>
- 452 31. **Ponnusamy A.** *cvlib - high level Computer Vision library for Python*. 2018.
453 <https://www.cvlib.net/>
- 454 32. **Bradski G.** *The OpenCV Library*. Dr. Dobb's Journal of Software Tools, 2000.
- 455 33. **Abadi M, et al.** TensorFlow: Large-Scale Machine Learning on Heterogeneous Distributed
456 Systems. *arXiv* 2016; *preprint arXiv:1603.04467v2*.
- 457 34. **Wood SN.** Fast stable restricted maximum likelihood and marginal likelihood estimation of
458 semiparametric generalized linear models. *Journal of the Royal Statistical Society: Series B*
459 (*Statistical Methodology*) 2011; **73**: 3–36.
- 460 35. **R Core Team.** *R: A Language and Environment for Statistical Computing*. Vienna, Austria: R
461 Foundation for Statistical Computing, 2019. <https://www.r-project.org/>
- 462 36. **PennState University Registrar.** *Academic Calendars*. 2020.
463 <https://registrar.psu.edu/academic-calendars/>

- 464 37. **Backer JA, Klinkenberg D, Wallinga J.** Incubation period of 2019 novel coronavirus (2019-
465 nCoV) infections among travellers from Wuhan, China, 20–28 January 2020. *Eurosurveillance*
466 2020; **25**: 2000062.
- 467 38. **Oster AM, et al.** Trends in Number and Distribution of COVID-19 Hotspot Counties - United
468 States, March 8-July 15, 2020. *MMWR. Morbidity and mortality weekly report* Centers for
469 Disease Control and Prevention, 2020; **69**: 1127–1132.

470

471

472 **Tables**

473 **Table 1. Details of Pennsylvania COVID-19 Restriction Phases (dates for Centre County)**

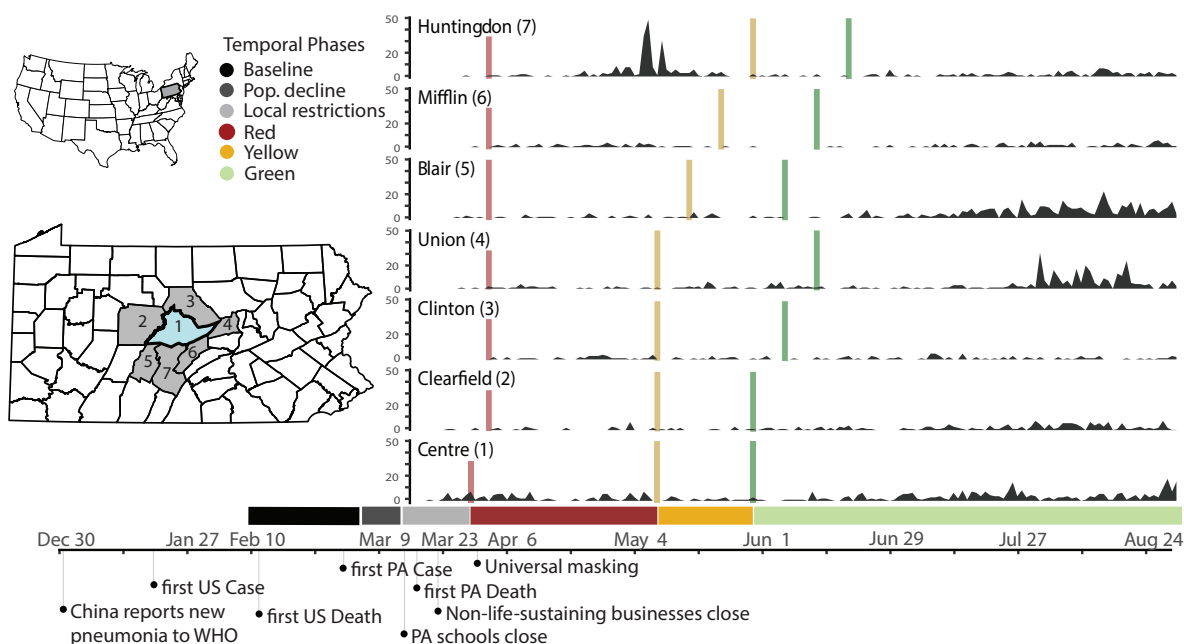
Restriction Phase	Length of phase	Work & congregate settings	Social settings
Red	40 days (28 March– 7 May)	<ul style="list-style-type: none"> • Life-sustaining businesses only • Schools closed for in-person teaching • Most childcare closed 	<ul style="list-style-type: none"> • Stay at home order • Large gatherings prohibited • Travel limited to life-sustaining purposes • Restaurants/ bars limited to carry-out and delivery
Yellow	20 days (8 May – 28 May)	<ul style="list-style-type: none"> • Telework where feasible • Businesses with in-person operations must follow safety guidelines • Schools closed for in-person teaching • Some childcare open with safety orders 	<ul style="list-style-type: none"> • Full stay at home restrictions lifted • In person retail allowed, but curbside/delivery preferred
Green	78 days (29 May– 14 August for this study; though restrictions	<ul style="list-style-type: none"> • Businesses reopen with CDC and PA Department of Health (DOH) guidelines (reduced 	<ul style="list-style-type: none"> • Gyms, spas, entertainment reopen pending guidelines • Aggressive mitigation orders lifted (individuals

	were in place until 12 December)	capacity, distancing, mask wearing)	must follow CDC and PA DOH guidelines)
--	-------------------------------------	--	---

474

475

476 **Figure Legends**



477

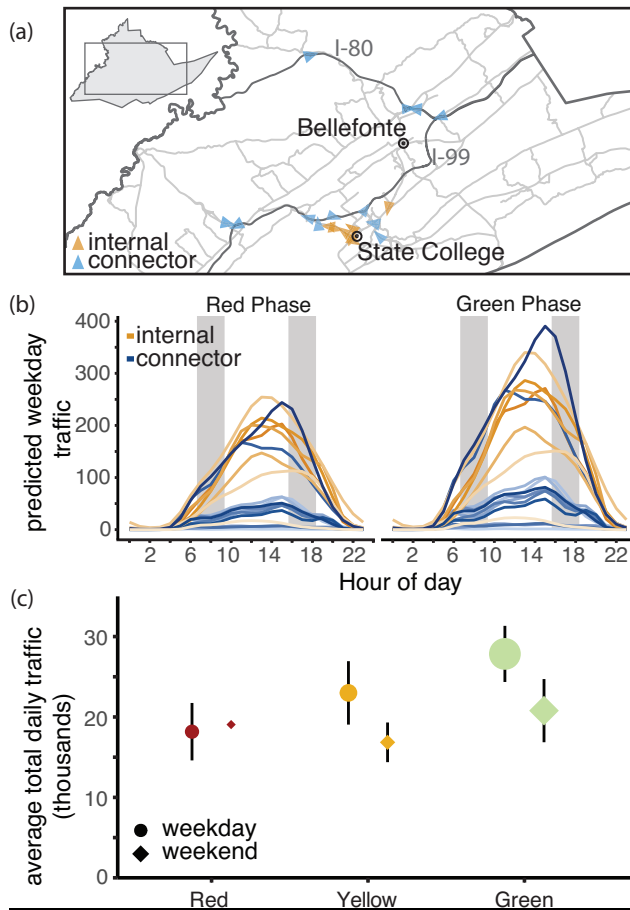
478 **Figure 1. Timeline of policy interventions and cases in Centre County and adjacent counties.**

479 Left inset maps: location of Pennsylvania in the United States with locations of Centre County

480 (blue) and surrounding counties (grey). Right: Daily case reports by county, color bars indicate

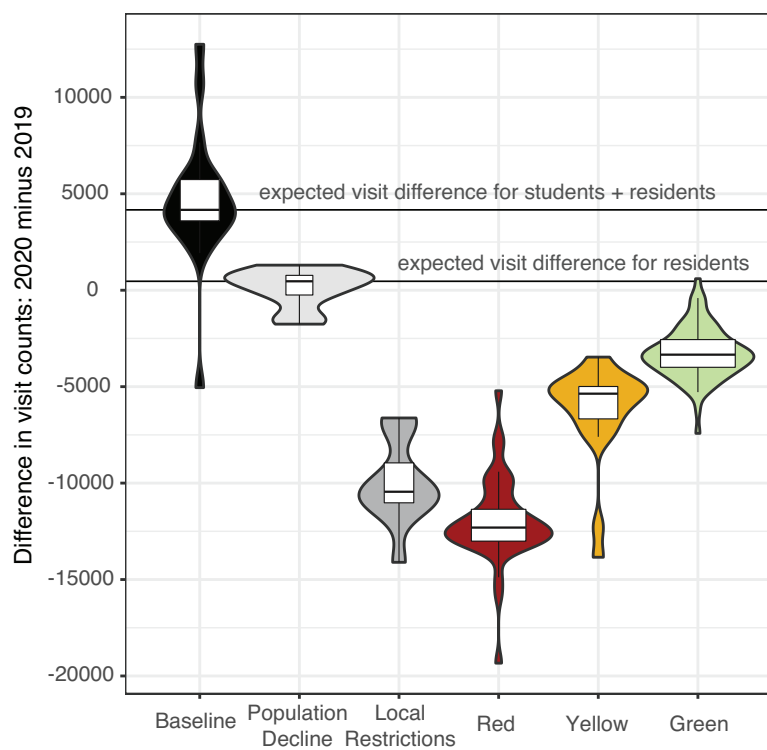
481 onset of restriction phases. Below: Colors for all temporal phases for Centre County. Bottom:

482 Timeline of relevant events.



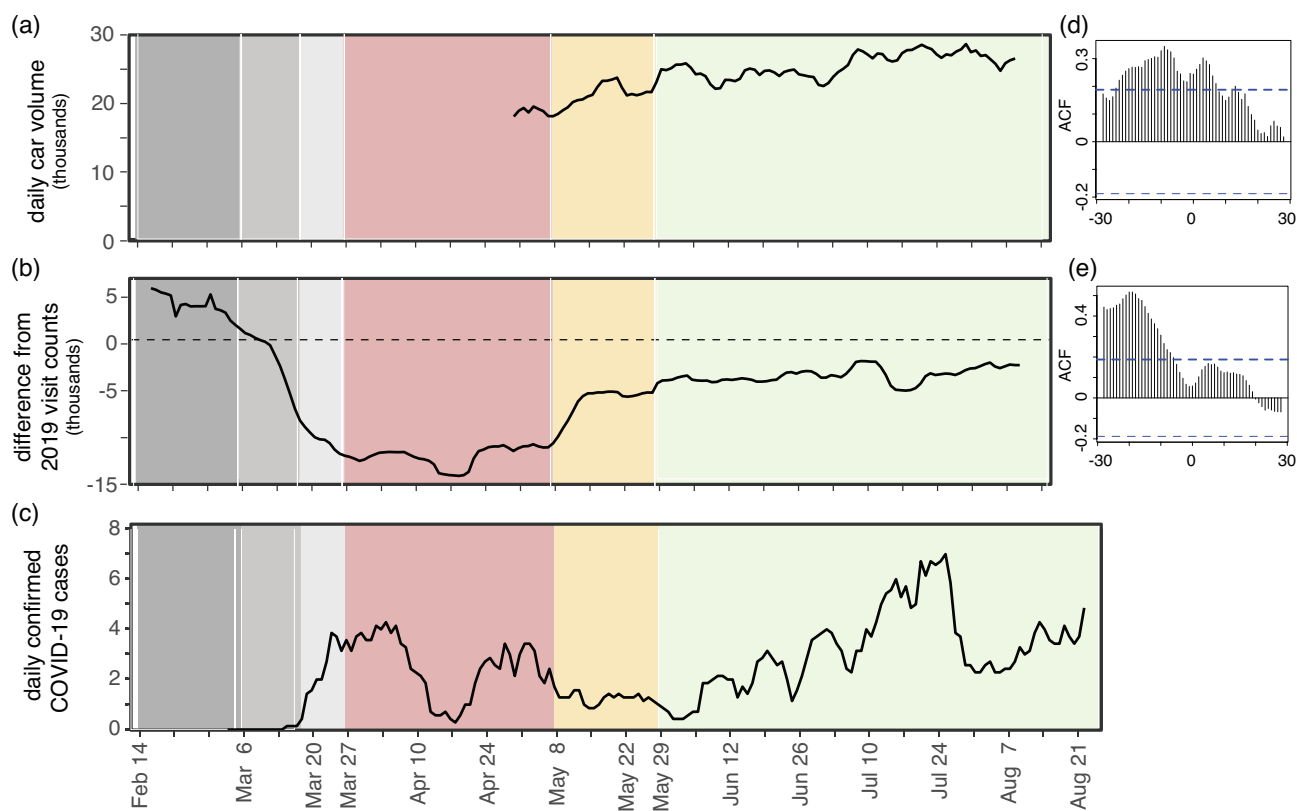
483

484 **Figure 2. Traffic camera locations and volume throughout containment phases.** (A) Locations
485 of traffic cameras. Internal road traffic cameras (yellow) were concentrated around the PSU campus
486 and surrounding boroughs, the connector road cameras (blue) covered a larger spatial extent. The
487 direction of each arrow points to the direction the image was captured. (B) Centre County hourly
488 vehicle volumes during Red and Green phases. Traffic during all phases peaked between 12:00 and
489 18:00 h EST. Vehicle volume was significantly greater in the green phase with the greatest
490 increases on connector roads. Typical rush hours (07:00-09:00 and 16:00-18:00) are shaded in grey.
491 (C) Traffic increased through each phase of easing of restrictions. The size of each point indicates
492 the number of days of data collection. The smallest sample size collected was during weekends in
493 the Red phase (2 days) and the largest number of observations was during weekdays in the Green
494 phase (55 days).



495

496 **Figure 3. Aggregated mobile device visit counts.** Summary of daily differences in visit counts
497 between 2020 and 2019 within each phase. The width of boxplots within violin plots corresponds to
498 the total number of days in each phase: minimum 8 days in Local Restrictions, maximum 78 days in
499 the Red phase. The two horizontal lines indicate the median expected visit differential for 2020
500 compared to 2019 for students and residents combined (4,167) and for full-time residents only
501 (464).



502

503 **Figure 4. Estimated SARS-CoV-2 cases align with movement across phases.** (A) 7-day rolling
504 mean of daily total traffic volume increases as restriction phases ease. (B) 7-day rolling mean of
505 daily differences in mobile device visit data between 2020 and 2019. (C) 7-day rolling mean of
506 daily confirmed COVID-19 cases. (D) Autocorrelation function of daily traffic volume compared to
507 7-day mean of cases. Significant positive lags and leads are above the dotted blue line. (E)
508 Autocorrelation function of visit differentials compared to 7-day mean of cases. Significant lags
509 occur above the dotted blue line.

Passive surveillance assesses compliance with COVID-19 behavioral restrictions in a rural US county

Christina L Faust, Brian Lambert, Cale Kochenour, Anthony C. Robinson, Nita Bharti

SUPPLEMENTARY MATERIAL

Supplementary Methods

- I. Detailed timeline of events
- II. Details of traffic camera acquisition, standardization, and cleaning

Supplementary Tables

- Table S1. Traffic camera locations and descriptions
- Table S2. Calendar dates for phases between 2020 and 2019 for SafeGraph data
- Table S3. Summary of daily traffic data

Supplementary Figures

- Figure S1. Splines fit to hourly traffic volume by individual cameras
- Figure S2. Observed and predicted of hourly count data per camera through time
- Figure S3. Visit counts from SafeGraph for 2019 and 2020

Supplementary Methods

I. Detailed timeline of events

Figure 1 in the main text details many of the key disease and policy events that are relevant to changes in policies and movement at the Penn State University Park campus and throughout Centre County. We provide more detail and citations for information in Figure 1 to give additional context to the policies and messaging from March through August of 2020.

Timeline of important **disease** and **policy** events local study periods:

Dec 31, 2019: China reports to WHO new pneumonia

Jan 20, 2020: 1st case in US

[BASELINE PERIOD: Feb 18 – March 6]

February 12: first death in US (Santa Clara, CA, retrospectively identified)[1]

March 6: first 2 reported cases of COVID-19 in PA

[LOCAL POPULATION DECLINE: Feb 1 – March 6]

March 9: PSU spring break begins[2]

March 11: WHO declares COVID-19 a pandemic[3]; PSU announces no resident instruction following spring break[4]

March 16: PSU begins remote instruction

March 19: all non-life-sustaining businesses ordered to close statewide by PA Governor[5]

March 21: enforcement of closure of non-life-sustaining businesses statewide[5]

[RED PHASE: Feb 1 – March 6]

March 28: Centre County receives stay at home order from PA Governor [6]

April 3: PA Governor calls for “universal masking”

April 9: PA schools officially closed through end of academic year

May 1: announcement from PA Governor that on May 8 PA will lift some restrictions in 24 counties in the Northcentral and Northwest health districts; all counties will remain in “red” until May 8, these counties will move to “yellow” on May 8 [6]

[YELLOW PHASE: Feb 1 – March 6]

May 8: PA lifts some restrictions in 24 counties in the Northcentral and Northwest health districts as determined by PA Governor in moving from “red” (Stay-at-home) to “yellow” (aggressive mitigation) [6]

May 28: US death toll from COVID-19 passes 100,000

[GREEN PHASE: May 29 – August 14]

May 29: Some of Northcentral and Northwest health districts (Fig S2) move from “yellow” to “green”

June 30: First PSU student death from COVID-19

July 1: Order of face coverings in public places in Pennsylvania [7]

II. Details of traffic camera acquisition, standardization, and cleaning

We captured images every 20 seconds from each of 19 cameras. To standardize variation in images captured per hour, with variation due to timing mismatches or missing images (see below), the sum of vehicles counted each hour is divided by the number of images captured each hour and scaled by the number of expected images if we captured one image per minute. This avoids overcounting cars at traffic lights but likely underestimates total vehicle volume on interstates. Therefore, count data should be interpreted as relative increases rather than absolute.

Occasionally, live stream traffic cameras would fail to capture images correctly, resulting in missing images. The standardized hourly counts were cleaned to remove strings of zeros or integers, which were the result of frozen images or occasionally, parked cars. None of the cameras capture legal parking zones when they are in the correct position. Incorrect vehicle counts from missing or erroneous images were replaced with NAs and predicted with the best fit generalized additive model (see Methods in Main Text; Fig S2).

Supplementary Tables

Table S1. Traffic camera locations and descriptions

ID	Latitude	Longitude	Ownership	Number of lanes	Road Type	Description
CAM02001CCTV2	40.810961	-78.075259	PennDOT (Pennsylvania Department of Transportation)	5	connector	Port Matilda US-322 By-Pass Westbound
CAM02002CCTV3	40.817144	-77.939841	PennDOT	7	connector	Grays Woods
CAM02003CCTV4	40.828613	-77.840339	PennDOT	6	connector	I-99/US-322 Interchange
CAM02005CCTV9	40.955477	-77.773749	PennDOT	3	connector	Milesburg Interchange West I-80 Exit 158 Eastbound / Alt US-220
CAM02006CCTV10	40.956061	-77.766277	PennDOT	3	connector	Milesburg Interchange East I-80 Exit 158 Westbound / PA-150
CAM02007CCTV13	40.795773	-77.820937	PennDOT	4	connector	US-322 E/O PA-26
CAM02009CCTV7	40.944571	-77.720918	PennDOT	2	connector	I-80 Eastbound Exit 161 Bellefonte Interchange (I-80 & I-99)
CAM02010CCTV11	40.80388	-78.063664	PennDOT	6	connector	Port Matilda I-99 Exit 61 Median
CAM02020CCTV24	40.829048	-77.804817	PennDOT	6	internal	Benner Pike
CAM02028CCTV32	40.812073	-77.9225	PennDOT	6	connector	Atherton and Valley Vista
CAM02033CCTV38	41.022703	-77.933981	PennDOT	4	connector	Snowshoe I-80 Exit 147
CAM02037CCTV43	40.807936	-77.895204	PennDOT	5	internal	Atherton and Vairo
CAM02038CCTV44	40.805031	-77.886886	PennDOT	5	internal	Atherton and North Hills
CAM02039CCTV45	40.796522	-77.872549	PennDOT	5	internal	Atherton and Park
CAM02040CCTV46	40.791787	-77.864971	PennDOT	4	internal	Atherton and W.College
CAM02042CCTV49	40.790894	-77.863812	PennDOT	4	internal	Atherton and W.Beaver
CAM02046CCTV52	40.817953	-77.900271	PennDOT	4	connector	I-99 at Exit 71 (Toftrees)
collegeTwp	40.811564	-77.830719	State College Township	4	connector	College Township Traffic camera
parkArboretum	40.804483	-77.864219	Penn State University	3	internal	Penn State University Park Ave.

Table S2. Calendar dates for phases between 2020 and 2019 for SafeGraph data. The timing of Spring Break and Commencement at Penn State determine large scale movement events in State College and surrounding areas in Centre County. The timing of these events was matched across 2019 and 2020 so events during the pandemic year would be accurately compared to the same events/timing in previous year. All phases have the same number of days and number of weekdays. For the Population Decline period, the dates included the Friday before spring break through the last Sunday of spring break. Dates are from the Office of the Registrar at Penn State [2].

Year	Baseline	Population Decline (Spring Break)	Local Restrictions	Red	Yellow (corresponds to commencement)	Green
2019	Feb 8	March 1	March 11	March 22	May 3	May 24
2020	Feb 14	March 6	March 18	March 27	May 8	May 29

Table S3. Summary of daily traffic data. Estimates of daily means of vehicle counts using observed and predicted counts from best-fit GAM.

		Mean daily traffic by Restriction Phase		
Weekday/ Weekend	Road type	County Red	County Yellow	County Green
Weekday	Internal	10772	13267	15309
Weekday	Connector	7397	9729	12425
Weekend	Internal	12678	10455	12083
Weekend	Connector	6367	6367	8113

Supplementary Figures

Figure S1. Splines fit to hourly traffic volume by individual cameras. The y- axes show the estimates of the best-fit GAM and x-axes show the hour of the day (range 0-23).

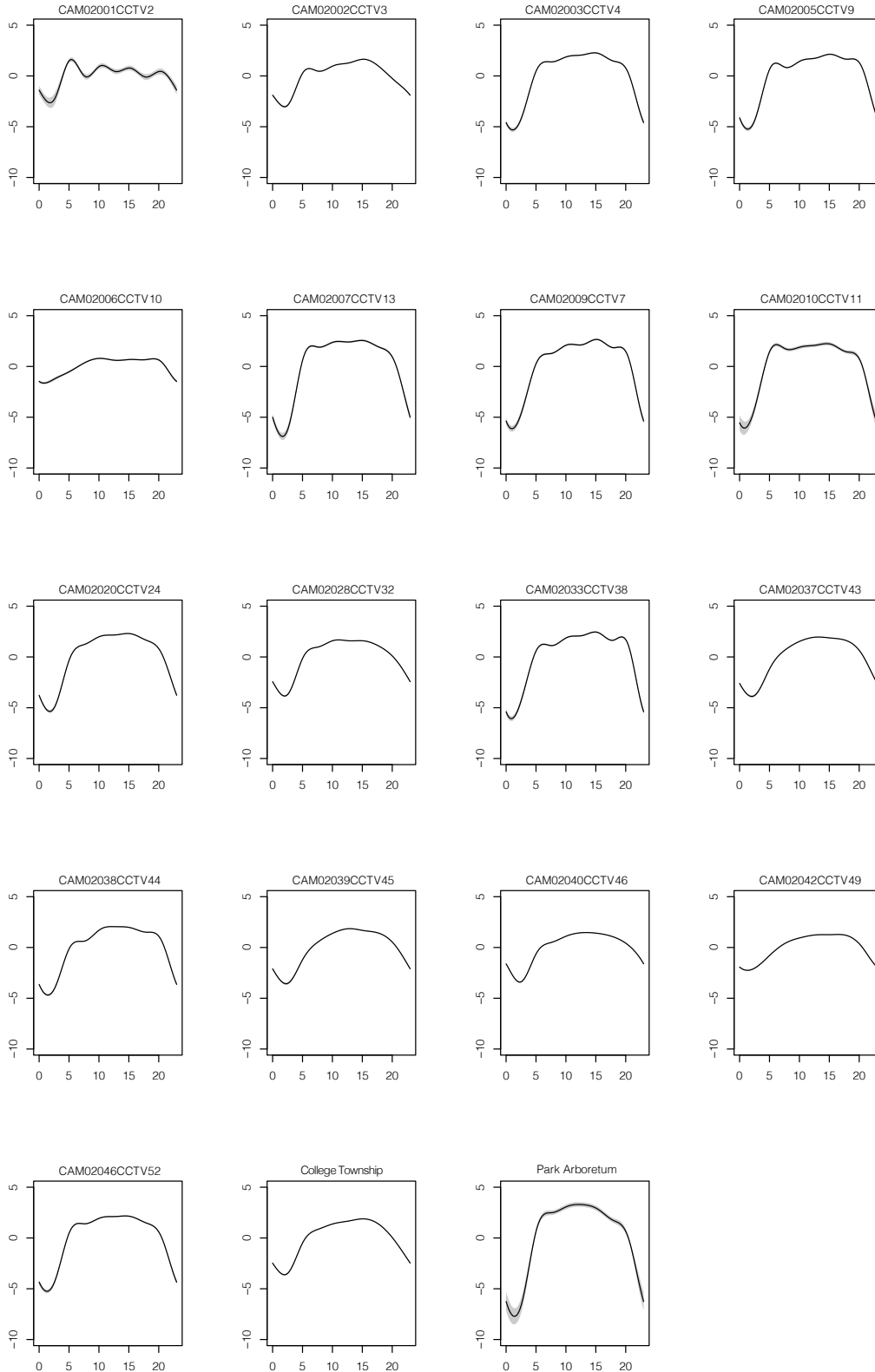


Figure S2. Observed and predicted hourly count data per camera through time. Predicted counts from the best-fit GAM are used to fill in gaps in observed data and are shown in open circles. Phases are indicated with vertical colored lines for Red, Yellow and Green Phases. Colors for each camera are consistent with Fig 2 in the main text; shades of blue represent connector roads and orange shades represent internal roads. The range of the y-axis varies by camera.

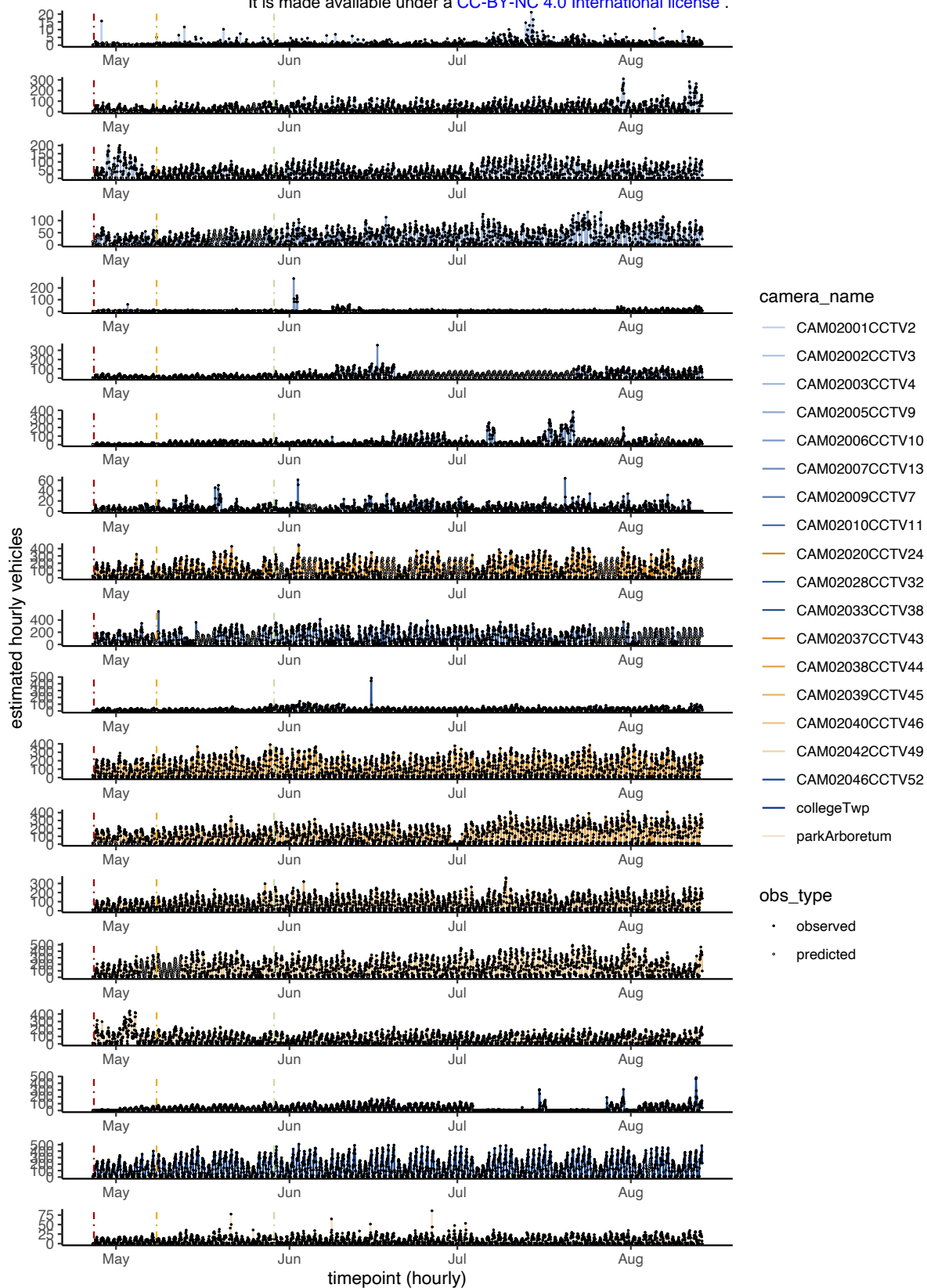
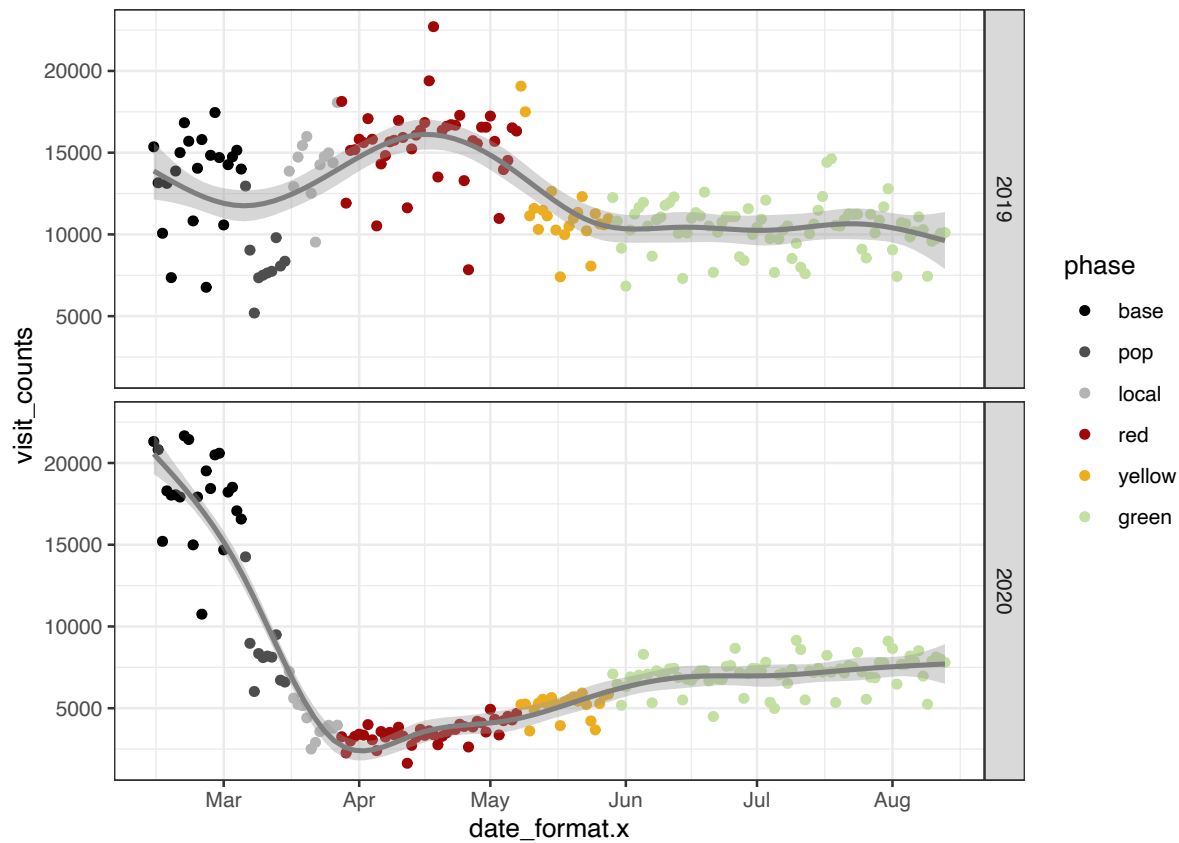


Figure S3. Visit counts for Centre County, Spring and Summer 2019-2020



Supplementary References

1. **Fuller T, Baker M.** *Coronavirus death in California came weeks before first known US death.* *NY Times.* 2020; Published online: 22 April 2020.
2. **PennState University Registrar.** *Academic Calendars.* 2020.
3. **World Health Organization.** *WHO Director-General's opening remarks at the media briefing on COVID-19.* 2020 Nov.
4. **Barron E.** *All Penn State classes to take place remotely beginning March 16.* *Penn State University.* 2020; Published online: 11 March 2020.
5. **Wolf T.** *Order of the Govenor of the Commonwealth of Pennsylvania regarding the closure of all businesses that are not life sustaining.* Commonwealth of Pennsylvania, 2020.
6. **Wolf T.** *Process to Reopen Pennsylvania.*
7. **Levine R.** *Order of the Secretary of the Pennsylvania Department of Health Requiring Universal Face Coverings.* 2020.