

COVID-19 in patients with hepatobiliary and pancreatic diseases in East London: A single-centre cohort study

Abu Z M Dayem Ullah^{1,2}, Lavanya Sivapalan¹, Prof Claude Chelala^{1,3}, Prof Hemant M Kocher^{1,2}

¹Barts Cancer Institute, Queen Mary University of London, London, UK

²Barts Health NHS Trust, London, UK

³Life Sciences Institute, Queen Mary University of London, London, UK

ABSTRACT

Objective

The impact of COVID-19 in patients with pre-existing hepato-pancreato-biliary (HPB) conditions is not clearly understood. To explore risk factors associated with COVID-19 susceptibility and survival in this patient group, we conducted a single-centre retrospective cohort study.

Design

We interrogated linked electronic health records for patients diagnosed with HPB diseases in East London since 2008 (n=15 586), and identified 212 confirmed COVID-19 cases between February 12 and June 12, 2020. We conducted risk analyses to identify the effect of demographics, comorbidities and associated medication use, and lifestyle factors and with appropriate adjustment for gender, ethnicity, age group and HPB diagnoses on COVID-19 incidence and mortality.

Results

We observed an increased risk of COVID-19 for men (Relative Risk, RR=1.59; 95% CI 1.21 to 2.09) and Black ethnicity (RR=2.2; 95% CI 1.5 to 3.18). Substance mis-users were at more risk of infection, so were patients on Vitamin D treatment. The higher risks associated with South Asian ethnicity, patients with pre-existing non-malignant pancreatic or liver conditions, age>70, and past smokers were due to co-existing comorbidities; surprisingly current smokers were associated with a lower risk. Increased mortality risk was observed for Black ethnicity (RR=2.4; 95% CI 1.35 to 3.48), and patients with a pre-existing kidney condition (RR=2.13; 95% CI 1.16 to 3.55) - particularly when accompanied with an acute episode of renal complications (RR=2.74; 95% CI 1.32 to 5.13).

Conclusions

This large multi-ethnic population-based study of HPB patients shows a higher risk of acquiring COVID-19 for male gender, Black ethnicity, medical co-morbidities, and substance mis-users. Particular attention should be paid to patients with a pre-existing kidney disease for further renal insult to prevent fatality.

NOTE: This preprint reports new research that has not been certified by peer review and should not be used to guide clinical practice.

INTRODUCTION

COVID-19 is a novel infectious disease caused by severe acute respiratory syndrome coronavirus 2 (SARS-CoV-2), with a wide-ranging disease course. Infection and mortality rates of the COVID-19 pandemic have varied widely among nations and demographics,¹ while risks are still being explored, identified and categorised according to the severity.^{2,3} There are several confirmed risk factors of COVID-19 and severe outcomes, including old age,^{2,4,5} chronic pulmonary disease,^{2,4-6} cardiovascular disease,^{2,5,6} hypertension,⁵ chronic kidney disease,^{2,4,6} diabetes mellitus,^{2,5} obesity,^{2,6} haematological diseases,^{2,4} malignancy,^{2,4-6,8} and immuno-compromised state such as HIV infection.^{2,4,9} Medical complications following hospitalisation, including acute episodes of cardiovascular, respiratory, neurological, renal, or hepatic failure, have also been linked to severe outcomes.¹⁰ There are also other risk factors reported, such as smoking^{11,12} or being from a Black, Asian and minority ethnic (BAME) group,¹³⁻¹⁵ the effects of which are either mixed or the reasoning is not clearly understood.⁴ Concerns have also been raised regarding the use of various medications with respect to the risk or protective effect to COVID-19.¹⁶⁻¹⁸

Patients with diseases of the liver, pancreas or biliary tract (hepato-pancreato-biliary; HPB) are considered, in general, to be at risk of developing serious medical conditions. Expression of the ACE2 gene – a receptor for the SARS-CoV-2 virus – along the gastrointestinal tract is well documented, which suggests the digestive system is a potential route for COVID-19,¹⁸ making patients with a diseased HPB system susceptible to this novel infection. The prevalence of COVID-19 among patients with hepatic conditions has been explored,^{6,15,19} indicating severe liver disease as a moderate risk factor for COVID-19.² In contrast, very limited data is available on the prevalence of COVID-19 among patients with pancreatic or biliary conditions,²⁰ although pancreatic manifestations of the disease are rare.^{21,22} It is important that clinical characteristics of COVID-19 are investigated for the HPB group as a whole, not only because these diseases demonstrate similar clinical-biologic behaviours,²³ but also since they are commonly seen by a single clinical unit with specialist expertise in the management of these diseases.

The United Kingdom (UK) has been the worst affected country in Europe by COVID-19, with a reported death toll of 44819 as of June 30, 2020.²⁴ At the same time, London had the highest incidence and mortality rates, with 33775 confirmed cases and 8438 deaths.^{25,26} Barts Health NHS Trust (BHNT) is the largest National Health Service (NHS) Trust in England and acts as provider of district general hospital facilities for around 2.5 million population of East London as well as a range of tertiary care services.²⁷ Between March 1 and June 30, the three boroughs in East London - Tower Hamlets, Waltham Forest and Newham - had a combined age-standardised COVID-19 related mortality rate of 195 per 100 000 people. This was significantly higher than the rest of London where the age-standardised COVID-19 related mortality rate was 156 per 100 000 people.²⁵ East London is also one of the most ethnically diverse local areas in the country where an estimated 57% residents belong to a BAME group.²⁸ Significant health inequalities exist within the local population including higher rates of cancer, diabetes and obesity,²⁹ compared to the wider population. These conditions are not only known to be a precursor or consequence to HPB diseases, but also linked to COVID-19 and severe outcomes.

Here we integrate primary, secondary and tertiary electronic healthcare records (EHRs) of HPB patients in East London. We inspect the demographics, lifestyle, comorbidities and associated medication use of these patients, and any possible links with SARS-CoV-2 infection. We also evaluate whether the effect of these prevalent factors as well as clinical observations during COVID-19 related hospitalisation are associated with mortality. This study will inform the management of this specific cohort of patients.

METHODS

Study setting and data sources

All data utilised for this study were collected and processed under the East London Pancreatic Cancer Epidemiology (EL-PaC-Epidem) study at BHNT. In brief, EL-PaC-Epidem is an ongoing study that ascertains patients diagnosed or reported with HPB diseases including cancers, as well as control patients (e.g., small intestine, hernia), within five BHNT hospital sites (The Royal London Hospital, Newham University Hospital, St Bartholomew's Hospital, Whipps Cross University Hospital, Mile End Hospital) between 2008 and 2021. The EL-PaC-Epidem study was approved by the East of England - Essex Research Ethics Committee (19/EE/0163; May 17, 2019) and supported by the NHS Confidentiality Advisory Group for collecting and processing confidential patient information without consent (19/CAG/0219; January 17, 2020). The study is limited to the secondary use of a specified subset of patients' retrospective EHR generated during the course of normal care of these patients. It links EHRs from different data sources (via UK unique individual NHS numbers), including primary care through General Practitioners (GP) ([Discovery East London Programme data service](#) [DDS]) and secondary or tertiary care through hospitals (BHNT Consolidated Data Extract [CDE]). Patients, who have previously informed their GPs or NHS to stop sharing their personal and health records for purposes other than their individual care, were automatically excluded. The current EL-PaC-Epidem study cohort consists of 27324 adult patients (aged 18 years or over), diagnosed or reported with at least one of the HPB conditions (supplemental table 1) between April, 2008 and March 6, 2020. The censored data collection date for this cohort was June 12, 2020.

Study design and population

This is a retrospective single-centre cohort study utilising the linked EHR data of patients with a history of HPB diseases. Within this specific patient group, the study focused on the incidence of COVID-19, and examined the association of SARS-CoV-2 infection with major comorbidities, lifestyle factors, and use of medication.

As the first case of COVID-19 in London was reported on February 12, 2020, we used this as the start date for this study and extracted data on a subgroup of the EL-PaC-Epidem study cohort until June 12, 2020 (figure 1). Eligible individuals were a resident in East London and alive on the study start date (EL-HPB). Residency of East London was inferred if a patient had at least one appointment or prescription issued from a GP in East London boroughs or had a scheduled or unscheduled visit to one of the BHNT hospitals within the last six months (after August 12, 2019). Patients with *confirmed* SARS-CoV-2 infection were identified by: i) the presence of International Classification of Diseases 10th edition (ICD-10) or Systematized Nomenclature of Medicine Clinical Terms (SNOMED CT) codes for confirmed COVID-19 or SARS diagnosis assigned in their hospital encounters during the observation period between February 12 and June 12, 2020 (supplemental table 2) OR ii) positive record of SARS-CoV-2 RNA through BHNT oral and/or nasal swabs test during the same period. For confirmed COVID-19 cases, the earliest date of diagnosis or positive swab test was considered as the *index date*, whereas February 12, 2020 was considered as *index date* for rest of the cohort.

Patients, who were assigned an ICD-10 diagnosis code for *suspected* COVID-19 but were neither reassigned to confirmed diagnosis nor positive RNA test, were not considered as COVID-19 patients.

We also examined the onset-to-death distribution within the patient group with a confirmed COVID-19 diagnosis (EL-HPB-COVID). The death of a patient with a confirmed COVID-19 diagnosis within the observation period is considered as a COVID-19 related death. The onset-to-death distribution was analysed in the context of collated comorbidities, lifestyle and regular medication use, as well as medical complications during hospital care.

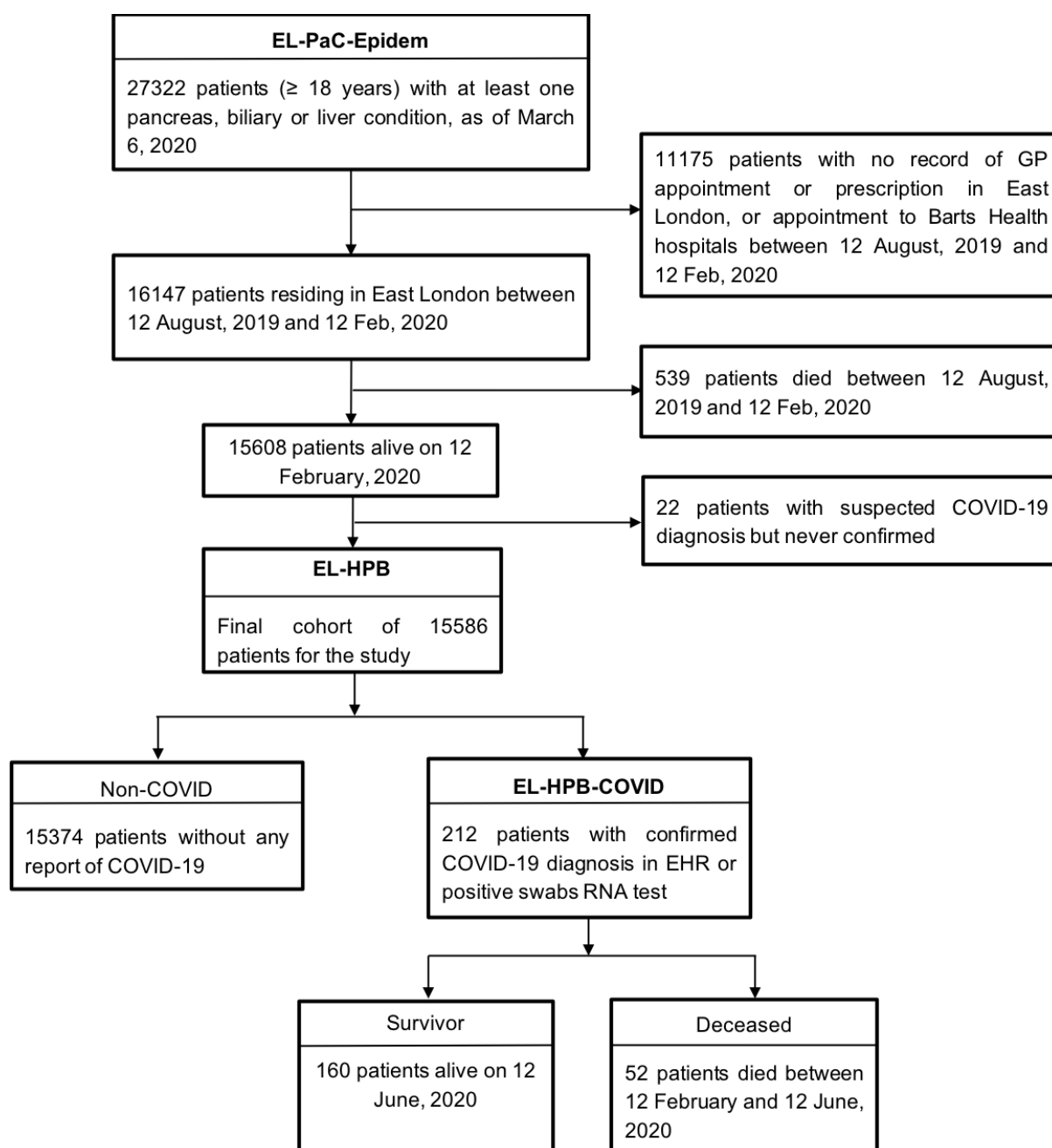


Figure 1 Selection of patients for the retrospective cohort study.

Procedures

All patient data were obtained from retrospective EHR, harmonised across hospital and GP coding systems where applicable, and organised into 38 primary variables across six categories corresponding to the focus of the study (table 1). BHNT CDE uses 2011 UK census grouping to record ethnicity, ICD-10 or SNOMED diagnosis codes for clinically relevant diagnoses, and Office of the Population Censuses and Surveys Classification of Interventions and Procedures version 4 (OPCS-4) procedural codes for treatments and procedures. Physiological observations (weight, body-mass index [BMI], blood pressure) and laboratory tests results are available in locally developed terms. Free text entries such as discharge summaries, past medical history and a lifestyle questionnaire collected during the pre-operative assessment, and presenting symptoms from scheduled or unscheduled hospital visits are also available. All GP records via DDS were available in Read Codes v2 or Clinical Terminology Version 3 (CTV3) codes, except the prescribed medication records which were available in SNOMED codes. For each variable, we consulted ICD-10, SNOMED, Read, CTV3 or OPCS-4 dictionaries as appropriate to construct the mapping *codelists*. For some variables, codelists also included keywords to search for within free text as well as local laboratory test and physiological observation terms.

Rule-based phenotyping algorithms were developed for each categorical variable to characterise patients. HPB diseases were grouped into four categories (supplemental table 1): *any* malignant disease, and non-malignant diseases of liver, pancreas or biliary tract. A patient can either be assigned to a malignant disease category or any of the non-malignant disease categories. Patients with non-malignant diagnoses for multiple organs were represented in all the respective non-malignant categories. Ethnicity was grouped into four categories - White, South Asian, Black, and Other. White and Black ethnic groups were defined based on the 2011 UK census classification; Indian, Pakistani and Bangladeshi origin from the Asian group represented South Asian, while the rest (i.e., Mixed, Chinese, other Asian and other ethnic group) were represented in the Other group. The ethnic category recorded at the GP took precedence over hospital records.

Phenotyping algorithms defining the comorbidities were based on diagnosis codes (presence) or free text search (presence or absence), with the additional inclusion of procedural codes (presence), some observation or laboratory test results (presence) and related medication use (at least three prescriptions). Patients were considered to have or have had a specific medical condition if they met at least one criterion indicating the presence of the condition before the *index date*, otherwise they were considered negative for the condition.

Phenotyping algorithms defining the lifestyle factors were based on the longitudinal entries (current, past or never) derived from diagnosis codes and free text search, with the additional inclusion of BMI observation for obesity. Obesity was defined as BMI of 30 kg/m² or more. Patients assigned *never* status at any point but having a record of *current* or *past* status before that date were reassigned to *past* status. The most recent lifestyle record before or on the *index date* was then used to assign *current*, *past* or *never* status to the patients. Patients with no record of a specific lifestyle factor were classified as having missing data.

Table 1 Variables and outcomes explored in this study.

Category	Variables	Levels/Units
Demographic	Gender Ethnicity Age (continuous) Age group* Binary age group* HPB diagnosis	Female, Male White, South Asian, Black, Other [, Not available] years 18-40, 41-50, 51-60, 61-70, 71-80, 80+ 18-60, 60+ Cancer, Pancreatic disease, Liver disease, Biliary disease
Comorbidity	Diabetes Hypertension High cholesterol Cardiovascular disease Respiratory disease Kidney disease Number of comorbidities*	No, Yes No, Yes No, Yes No, Yes No, Yes No, Yes None, 1, 2, 3 or more
Lifestyle factors	Smoker Alcohol drinker Substance user Obese	Never, Past, Current [, Not available] Never, Past, Current [, Not available] Never, Past, Current [, Not available] Never, Past, Current [, Not available]
Medication use	Angiotensin-converting enzyme [ACE] inhibitors Angiotensin II receptor blockers inhibitors [ARBs] Aldosterone antagonists [MCRA] Beta-adrenergic blocking agents [β -blockers] Calcium channel blockers [CCBs] Alpha agonist Thiazide Antiplatelet Antiarrhythmic Anticoagulant Glucocorticoid Beta-2 adrenergic receptor agonists [β_2 -agonists] Muscarinic antagonist Non-steroidal inflammatory drugs [NSAIDs] Vitamin D Proton pump inhibitors [PPIs] Statin Immunosuppressant	Non-, Past, Current user Non-, Past, Current user
Complications	Cardiovascular Respiratory Renal Number of recurrent complications* Number of novel complications*	No, Recurrent, Novel No, Recurrent, Novel No, Recurrent, Novel None, 1, 2, 3 None, 1, 2, 3
Outcome	COVID-19 COVID-19 mortality	non-COVID-19, COVID-19 Survivor, Deceased

All variables are categorical, unless otherwise stated. For categorical variables, the first value represents the reference level. Each HPB diagnosis groups are independent binary categorical variables. * Derived variables.

Patients were assigned *current*, *past* or *non-user* status for medication use variables based on the number of GP prescriptions issued in the last two years for the medicines under specific medication groups. Patients with no record of prescription for particular medications were assigned *non-user* status. With at least three prescriptions issued, a patient was assigned *current user* status if the latest issue was within three months preceding the *index date*, and *past user* status otherwise. Patients with record of less than three prescriptions were classified as *non-user*. Patients with COVID-19 were considered to have a specific complication during admitted patient care if at least one of the hospital diagnosis codes from the complications *codelist* was recorded during the observation period after *index date*, otherwise they were considered negative for the complication. A patient was considered to have a *recurrent* complication if they had a history of that particular comorbidity, otherwise it was considered as a *novel* complication.

Selection of study variables, *codelist* construction, and phenotyping algorithm development were done in consultation with a panel of clinicians and scientists (HMK, CC, LS). A comprehensive list of codelists and phenotyping algorithms for the study variables are available on the [EL-PaC-Epidem portal](#).

Statistical analysis

We conducted descriptive analyses for the EL-HPB cohort as a whole, by group for patients with confirmed SARS-CoV-2 infection and the rest (herein referred to as COVID-19 and non-COVID-19 respectively). Differences in demographic and clinical characteristics between the groups were assessed with Pearson's Chi-square test, Fisher's Exact test and Kruskal-Wallis rank sum test, as appropriate. *P* values less than 0.05 were considered significant. Similar descriptive analyses were performed for the EL-HPB-COVID cohort, and by survivor and deceased groups.

To explore the risk factors associated with COVID-19 susceptibility and subsequent survival, the effect size for each variable under investigation was evaluated with relative risks (RRs) with 95% confidence intervals (CI), using regression models with a binomial distribution and log link function. Crude RRs were obtained from univariable regression models, and then simultaneously adjusted for a fixed set of potential confounders (gender, ethnicity, age group, HPB diagnoses) using multivariable regression models with Benjamini-Hochberg correction for *P* values adjustment. The median age of the overall EL-HPB cohort being 57, a simplified binary age grouping (18-60, 61+) was used in multivariable regression models for comorbidity, lifestyle, medication use and post-diagnosis complication analyses. We also conducted more in depth post hoc analysis for demographic, lifestyle and medication categories by adding comorbidity covariates individually.

Patients with missing data for individual variables were included in the descriptive analyses but were automatically excluded in regression models from effect estimation. All statistical analyses and visualisations were performed in R (version 3.5.1).

RESULTS

The final EL-HPB cohort consisted of 15586 patients, after applying the eligibility criteria and excluding 22 suspected but unconfirmed COVID-19 cases. By June 12, 2020, 212 (1.4%) confirmed cases of COVID-19 were reported in this cohort (figure 1). More than half of the COVID-19 cases had some form of liver disease ($n=122$, 57.5%); however, when comparing confirmed COVID-19 cases with the non-COVID-19 cases, we observed a disproportionate infection frequency in patients with pancreatic conditions ($p=0.016$). We also observed differences in gender, ethnic origin, and age group between COVID and non-COVID-19 cases (table 2). The proportion of males was significantly higher in the COVID-19 group compared to the baseline non-COVID-19 group (55.2% vs 43.7%). The same trend was observed for Black (18.4% vs 10.7%) and South Asian population (32.1% vs 28.7%). COVID-19 patients were older than non-COVID-19 patients (median=66.7 years; IQR 54.2-80.5 vs 57.1 years; IQR 44.8-69.2], with a steady increase in infection frequency with age. 79% of COVID-19 patients had three or more comorbidities, with hypertension being the most common comorbidity (86.3%), followed by high cholesterol and diabetes (table 2). Only five COVID-19 patients had no additional comorbidities. In general, COVID-19 patients had a higher rate of history (current or past) of smoking, drinking, substance mis-use and obesity compared to the non-COVID-19 group. Consistent with the underlying prevalent comorbidities of the COVID-19 group, history of prescription drugs use associated with managing hypertension or cardiovascular disease (ACE inhibitor, calcium channel blocker, β -blocker, aldosterone antagonists, antiplatelet, anticoagulant), cholesterol (statin), inflammation (glucocorticoid, β 2-agonists) or background HPB condition (proton pump inhibitor) were higher in COVID-19 patients (table 2). Intake of vitamin D was also higher in COVID-19 patients.

The risk analyses showed a greater risk of COVID-19 for men, the elderly (over 70s) and the Black community (figure 2). Patients from the South Asian ethnic group and those with pancreatic and liver conditions were also associated with a higher risk of infection (RR=1.49; 95% CI 1.08 to 2.04, RR=1.61; 95% CI 1.13 to 2.24, and RR=1.55; 95% CI 1.1 to 2.18, respectively). However, post-hoc adjustment for comorbidities returned a reduced non-significant positive risk (RR=1.19; 95% CI 0.85 to 1.64, RR=1.36; 95% CI 0.96 to 1.9, and RR=1.32; 95% CI 0.93 to 1.85, respectively), with diabetes principally responsible for this reduction (supplemental table 3). Patients with pre-existing kidney conditions were at the highest risk of COVID-19 (RR=2.61; 95% CI 1.97 to 3.47), followed by a more than two-fold increased risk for patients with hypertension, diabetes, cardiovascular or respiratory disease (figure 2). However, the independent effects of hypertension and high cholesterol were absent when adjusted for other comorbidities (supplemental table 3).

As of June 12, 54 (25.5%) of the 212 patients with COVID-19 had died; the death rate in the non-COVID-19 group during the same period was 1.7%. When analysing the 54 deceased and 158 surviving patients with confirmed SARS-CoV-2 infection, we found no differences in gender, but deceased patients were older than the survivors (median=77 years; IQR 66.4-82.5 vs 63.5 years; IQR 50-78.1; $p<0.001$) with steady increase in death with age becoming prominent in those above 70 years of age. The death rate was higher amongst Black (27.8% vs 15.2%) and South Asian (37% vs 30.4%) populations. The median survival period for the deceased patients from the date of confirmed COVID-19 diagnosis was 16 days (IQR 10-25.7). Kidney,

hypertension, diabetes and cardiovascular conditions were observed to be associated with mortality in COVID-19 patients. 96.3% of deceased patients had at least three additional comorbidities, compared to 73.4% of patients who survived. A history of smoking was also associated with death. No overall differences were observed for other lifestyle factors, although half of the deceased were current substance misusers. Notable differences were observed in the use of ACE inhibitors, vitamin D, statins, and antiplatelet medications. The frequency of renal complications was significantly higher in the deceased group compared to survivors (87% vs 58.2%).

The risk analyses showed an increased risk of COVID-19 related death for elderly patients (over 70s) and individuals from the Black community (figure 3). No HPB subgroups were particularly more vulnerable to COVID-related death. COVID-19 patients with recurrent renal complications were associated with a higher risk of death, whereas those with prevalent kidney conditions or recent users of ACE inhibitors showed a trend towards significance. No other comorbidities, lifestyle factors, medication history or post-diagnosis complications had a significant effect on the COVID-19 patients' outcome (figure 3).

Table 2 Differences in demographic, comorbidity, lifestyle, and medication use characteristics between COVID-19 infected and non-COVID-19 groups.

	non-COVID-19 (n=15 374)	COVID-19 (n=212)	Total (n=15 586)	p value
Demographics				
Gender				<0.001
Female	8651 (56.3%)	95 (44.8%)	8746 (56.1%)	
Male	6723 (43.7%)	117 (55.2%)	6840 (43.9%)	
Ethnic origin				<0.001
<i>Not available</i>	444 (2.9%)	2 (0.9%)	446 (2.9%)	
White	7001 (45.5%)	87 (41.0%)	7088 (45.5%)	
South Asian	4407 (28.7%)	68 (32.1%)	4475 (28.7%)	
Black	1647 (10.7%)	39 (18.4%)	1686 (10.8%)	
Other	1875 (12.2%)	16 (7.5%)	1891 (12.1%)	
HPB diagnosis*				
Cancer	422 (2.7%)	3 (1.4%)	425 (2.7%)	0.291
<i>Non-cancer</i>				
Pancreatic disease	2583 (16.8%)	49 (23.1%)	2632 (16.9%)	0.016
Liver disease	8098 (52.7%)	122 (57.5%)	8220 (52.7%)	0.152
Biliary disease	7331 (47.7%)	98 (46.2%)	7429 (47.7%)	0.676
Age				<0.001
Median	57.07	66.68	57.18	
IQR	44.75, 69.21	54.21, 80.51	44.85, 69.42	
Age group				<0.001
18-40	2837 (18.5%)	21 (9.9%)	2858 (18.3%)	
41-50	2743 (17.8%)	26 (12.3%)	2769 (17.8%)	
51-60	3439 (22.4%)	35 (16.5%)	3474 (22.3%)	
61-70	2981 (19.4%)	35 (16.5%)	3016 (19.4%)	
71-80	2000 (13.0%)	43 (20.3%)	2043 (13.1%)	
80+	1374 (8.9%)	52 (24.5%)	1426 (9.1%)	
Mortality				<0.001
Deceased	268 (1.7%)	54 (25.5%)	322 (2.1%)	
Survived	15106 (98.3%)	158 (74.5%)	15264 (97.9%)	

	non-COVID-19 (n=15 374)	COVID-19 (n=212)	Total (n=15 586)	p value
Comorbidities				
Hypertension	9984 (64.9%)	183 (86.3%)	10167 (65.2%)	<0.001
Cholesterol	8070 (52.5%)	150 (70.8%)	8220 (52.7%)	<0.001
Diabetes	5906 (38.4%)	141 (66.5%)	6047 (38.8%)	<0.001
Cardiovascular	4304 (28.0%)	117 (55.2%)	4421 (28.4%)	<0.001
Kidney	4014 (26.1%)	114 (53.8%)	4128 (26.5%)	<0.001
Respiratory	5010 (32.6%)	112 (52.8%)	5122 (32.9%)	<0.001
Number of comorbidities				<0.001
None	2259 (14.7%)	5 (2.4%)	2264 (14.5%)	
1	2943 (19.1%)	12 (5.7%)	2955 (19.0%)	
2	2984 (19.4%)	27 (12.7%)	3011 (19.3%)	
3 or more	7188 (46.8%)	168 (79.2%)	7356 (47.2%)	
Lifestyle factors				
Smoker				<0.001
Not available	896 (5.8%)	6 (2.8%)	902 (5.8%)	
Never	6459 (42.0%)	80 (37.7%)	6539 (42.0%)	
Past	4751 (30.9%)	102 (48.1%)	4853 (31.1%)	
Current	3268 (21.3%)	24 (11.3%)	3292 (21.1%)	
Drinker				0.007
Not available	2888 (18.8%)	29 (13.7%)	2917 (18.7%)	
Never	3755 (24.4%)	49 (23.1%)	3804 (24.4%)	
Past	2140 (13.9%)	46 (21.7%)	2186 (14.0%)	
Current	6591 (42.9%)	88 (41.5%)	6679 (42.9%)	
Substance user				<0.001
Not available	7784 (50.6%)	95 (44.8%)	7879 (50.6%)	
Never	3785 (24.6%)	29 (13.7%)	3814 (24.5%)	
Past	404 (2.6%)	13 (6.1%)	417 (2.7%)	
Current	3401 (22.1%)	75 (35.4%)	3476 (22.3%)	
Obese				0.01
Not available	645 (4.2%)	2 (0.9%)	647 (4.2%)	
Never	2327 (15.1%)	22 (10.4%)	2349 (15.1%)	
Past	6594 (42.9%)	107 (50.5%)	6701 (43.0%)	
Current	5808 (37.8%)	81 (38.2%)	5889 (37.8%)	
Prescription medication use				
ACE inhibitor				<0.001
Non-user	12649 (82.3%)	159 (75.0%)	12808 (82.2%)	
Past user	582 (3.8%)	24 (11.3%)	606 (3.9%)	
Current user	2143 (13.9%)	29 (13.7%)	2172 (13.9%)	
Angiotensin receptor blocker				0.08
Non-user	13903 (90.4%)	182 (85.8%)	14085 (90.4%)	
Past user	256 (1.7%)	5 (2.4%)	261 (1.7%)	
Current user	1215 (7.9%)	25 (11.8%)	1240 (8.0%)	
Aldosterone agonist				0.001
Non-user	14825 (96.4%)	196 (92.5%)	15021 (96.4%)	
Past user	156 (1.0%)	7 (3.3%)	163 (1.0%)	
Current user	393 (2.6%)	9 (4.2%)	402 (2.6%)	
β-blocker				<0.001
Non-user	12821 (83.4%)	148 (69.8%)	12969 (83.2%)	
Past user	501 (3.3%)	13 (6.1%)	514 (3.3%)	
Current user	2052 (13.3%)	51 (24.1%)	2103 (13.5%)	
Calcium channel blocker				0.023
Non-user	12332 (80.2%)	158 (74.5%)	12490 (80.1%)	
Past user	628 (4.1%)	16 (7.5%)	644 (4.1%)	
Current user	2414 (15.7%)	38 (17.9%)	2452 (15.7%)	

	non-COVID-19 (n=15 374)	COVID-19 (N=212)	Total (n=15 586)	p value
Alpha agonist				0.587
Non-user	15297 (99.5%)	212 (100.0%)	15509 (99.5%)	
Past user	22 (0.1%)	0 (0.0%)	22 (0.1%)	
Current user	55 (0.4%)	0 (0.0%)	55 (0.4%)	
Thiazide				0.728
Non-user	15297 (99.5%)	211 (99.5%)	15508 (99.5%)	
Past user	31 (0.2%)	0 (0.0%)	31 (0.2%)	
Current user	46 (0.3%)	1 (0.5%)	47 (0.3%)	
Antiplatelet				<0.001
Non-user	13261 (86.3%)	151 (71.2%)	13412 (86.1%)	
Past user	495 (3.2%)	18 (8.5%)	513 (3.3%)	
Current user	1618 (10.5%)	43 (20.3%)	1661 (10.7%)	
Antiarrhythmic				0.049
Non-user	15208 (98.9%)	206 (97.2%)	15414 (98.9%)	
Past user	47 (0.3%)	2 (0.9%)	49 (0.3%)	
Current user	119 (0.8%)	4 (1.9%)	123 (0.8%)	
Anticoagulant				0.005
Non-user	14837 (96.5%)	196 (92.5%)	15033 (96.5%)	
Past user	140 (0.9%)	5 (2.4%)	145 (0.9%)	
Current user	397 (2.6%)	11 (5.2%)	408 (2.6%)	
Glucocorticoid				<0.001
Non-user	11437 (74.4%)	122 (57.5%)	11559 (74.2%)	
Past user	1259 (8.2%)	22 (10.4%)	1281 (8.2%)	
Current user	2678 (17.4%)	68 (32.1%)	2746 (17.6%)	
β2-agonist				<0.001
Non-user	13734 (89.3%)	167 (78.8%)	13901 (89.2%)	
Past user	284 (1.8%)	8 (3.8%)	292 (1.9%)	
Current user	1356 (8.8%)	37 (17.5%)	1393 (8.9%)	
Muscarinic antagonist				<0.001
Non-user	13860 (90.2%)	170 (80.2%)	14030 (90.0%)	
Past user	318 (2.1%)	9 (4.2%)	327 (2.1%)	
Current user	1196 (7.8%)	33 (15.6%)	1229 (7.9%)	
NSAID				0.139
Non-user	13928 (90.6%)	185 (87.3%)	14113 (90.5%)	
Past user	724 (4.7%)	11 (5.2%)	735 (4.7%)	
Current user	722 (4.7%)	16 (7.5%)	738 (4.7%)	
Vitamin D				<0.001
Non-user	13137 (85.4%)	144 (67.9%)	13281 (85.2%)	
Past user	609 (4.0%)	20 (9.4%)	629 (4.0%)	
Current user	1628 (10.6%)	48 (22.6%)	1676 (10.8%)	
Proton pump inhibitor				<0.001
Non-user	9575 (62.3%)	103 (48.6%)	9678 (62.1%)	
Past user	1353 (8.8%)	22 (10.4%)	1375 (8.8%)	
Current user	4446 (28.9%)	87 (41.0%)	4533 (29.1%)	
Statin				<0.001
Non-user	10261 (66.7%)	104 (49.1%)	10365 (66.5%)	
Past user	853 (5.5%)	26 (12.3%)	879 (5.6%)	
Current user	4260 (27.7%)	82 (38.7%)	4342 (27.9%)	
Immuno-suppressant				0.044
Non-user	14929 (97.1%)	200 (94.3%)	15129 (97.1%)	
Past user	185 (1.2%)	4 (1.9%)	189 (1.2%)	
Current user	260 (1.7%)	8 (3.8%)	268 (1.7%)	

Values are n (%), unless otherwise specified. *Percentages total more than 100% because patients might have had non-malignant diseases in multiple organs.

Table 3 Differences in demographic, comorbidity, lifestyle, medication use, and post diagnosis complications characteristics between COVID-19 survivor and deceased groups.

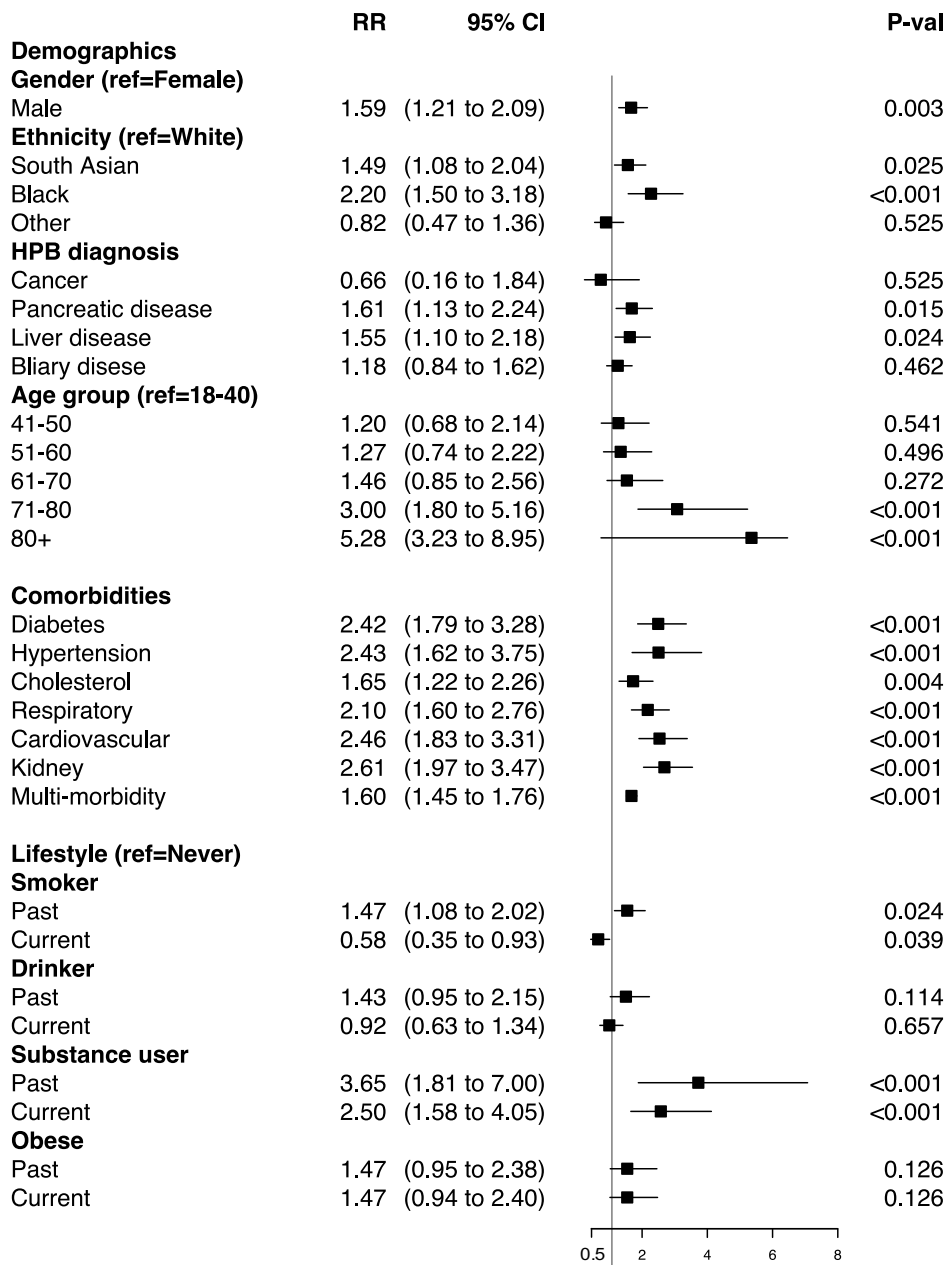
	Survivor (n=158)	Deceased (n=54)	Total (n=212)	p value
Demographics				
Gender				0.207
Female	75 (47.5%)	20 (37.0%)	95 (44.8%)	
Male	83 (52.5%)	34 (63.0%)	117 (55.2%)	
Ethnicity				0.065
<i>Not available</i>	2 (1.3%)	0 (0.0%)	2 (0.9%)	
White	69 (43.7%)	18 (33.3%)	87 (41.0%)	
South Asian	48 (30.4%)	20 (37.0%)	68 (32.1%)	
Black	24 (15.2%)	15 (27.8%)	39 (18.4%)	
Other	15 (9.5%)	1 (1.9%)	16 (7.5%)	
HPB diagnosis*				
Cancer	1 (0.6%)	2 (3.7%)	3 (1.4%)	0.160
<i>Non-cancer</i>				
Pancreatic disease	34 (21.5%)	15 (27.8%)	49 (23.1%)	0.355
Liver disease	95 (60.1%)	27 (50.0%)	122 (57.5%)	0.206
Biliary disease	68 (43.0%)	30 (55.6%)	98 (46.2%)	0.117
Age				<0.001
Median	63.55	76.99	66.81	
IQR	50.00, 78.06	66.44, 82.52	53.95, 80.65	
Age group				0.002
18-40	20 (12.7%)	2 (3.7%)	22 (10.4%)	
41-50	22 (13.9%)	3 (5.6%)	25 (11.8%)	
51-60	31 (19.6%)	4 (7.4%)	35 (16.5%)	
61-70	27 (17.1%)	8 (14.8%)	35 (16.5%)	
71-80	25 (15.8%)	17 (31.5%)	42 (19.8%)	
80+	33 (20.9%)	20 (37.0%)	53 (25.0%)	
Survival/censoring				< 0.001
Median	73	16	66	
IQR	62.00, 81.75	10.00, 25.75	30.75, 77.00	
Comorbidities				
Hypertension	130 (82.3%)	53 (98.1%)	183 (86.3%)	0.002
Diabetes	97 (61.4%)	44 (81.5%)	141 (66.5%)	0.007
Cholesterol	108 (68.4%)	42 (77.8%)	150 (70.8%)	0.227
Kidney	73 (46.2%)	41 (75.9%)	114 (53.8%)	<0.001
Cardiovascular	80 (50.6%)	37 (68.5%)	117 (55.2%)	0.027
Respiratory	85 (53.8%)	27 (50.0%)	112 (52.8%)	0.639
Number of comorbidities				0.003
None	5 (3.2%)	0 (0.0%)	5 (2.4%)	
1	12 (7.6%)	0 (0.0%)	12 (5.7%)	
2	25 (15.8%)	2 (3.7%)	27 (12.7%)	
3 or more	116 (73.4%)	52 (96.3%)	168 (79.2%)	

	Survivor (n=158)	Deceased (n=54)	Total (n=212)	p value
Lifestyle factors				
Smoker				0.014
<i>Not available</i>	6 (3.8%)	0 (0.0%)	6 (2.8%)	
Never	63 (39.9%)	17 (31.5%)	80 (37.7%)	
Past	67 (42.4%)	35 (64.8%)	102 (48.1%)	
Current	22 (13.9%)	2 (3.7%)	24 (11.3%)	
Drinker				0.951
<i>Not available</i>	22 (13.9%)	7 (13.0%)	29 (13.7%)	
Never	38 (24.1%)	11 (20.4%)	49 (23.1%)	
Past	34 (21.5%)	12 (22.2%)	46 (21.7%)	
Current	64 (40.5%)	24 (44.4%)	88 (41.5%)	
Substance user				0.087
<i>Not available</i>	76 (48.1%)	19 (35.2%)	95 (44.8%)	
Never	23 (14.6%)	6 (11.1%)	29 (13.7%)	
Past	11 (7.0%)	2 (3.7%)	13 (6.1%)	
Current	48 (30.4%)	27 (50.0%)	75 (35.4%)	
Obese				0.708
<i>Not available</i>	1 (0.6%)	1 (1.9%)	2 (0.9%)	
Never	17 (10.8%)	5 (9.3%)	22 (10.4%)	
Past	78 (49.4%)	29 (53.7%)	107 (50.5%)	
Current	62 (39.2%)	19 (35.2%)	81 (38.2%)	
Prescription medication use				
ACE inhibitor				0.025
Non-user	126 (79.7%)	33 (61.1%)	159 (75.0%)	
Past user	15 (9.5%)	9 (16.7%)	24 (11.3%)	
Current user	17 (10.8%)	12 (22.2%)	29 (13.7%)	
Angiotensin receptor blocker				0.162
Non-user	138 (87.3%)	44 (81.5%)	182 (85.8%)	
Past user	2 (1.3%)	3 (5.6%)	5 (2.4%)	
Current user	18 (11.4%)	7 (13.0%)	25 (11.8%)	
Aldosterone agonist				0.81
Non-user	147 (93.0%)	49 (90.7%)	196 (92.5%)	
Past user	5 (3.2%)	2 (3.7%)	7 (3.3%)	
Current user	6 (3.8%)	3 (5.6%)	9 (4.2%)	
β-blocker				0.891
Non-user	111 (70.3%)	37 (68.5%)	148 (69.8%)	
Past user	9 (5.7%)	4 (7.4%)	13 (6.1%)	
Current user	38 (24.1%)	13 (24.1%)	51 (24.1%)	
Calcium channel blocker				0.217
Non-user	121 (76.6%)	37 (68.5%)	158 (74.5%)	
Past user	13 (8.2%)	3 (5.6%)	16 (7.5%)	
Current user	24 (15.2%)	14 (25.9%)	38 (17.9%)	
Alpha agonist				NA
Non-user	158 (100.0%)	54 (100.0%)	212 (100.0%)	

	Survivor (n=158)	Deceased (n=54)	Total (n=212)	p value
Thiazide				1
Non-user	157 (99.4%)	54 (100.0%)	211 (99.5%)	
Current user	1 (0.6%)	0 (0.0%)	1 (0.5%)	
Antiplatelet				0.052
Non-user	119 (75.3%)	32 (59.3%)	151 (71.2%)	
Past user	13 (8.2%)	5 (9.3%)	18 (8.5%)	
Current user	26 (16.5%)	17 (31.5%)	43 (20.3%)	
Antiarrhythmic				0.597
Non-user	154 (97.5%)	52 (96.3%)	206 (97.2%)	
Past user	1 (0.6%)	1 (1.9%)	2 (0.9%)	
Current user	3 (1.9%)	1 (1.9%)	4 (1.9%)	
Anticoagulant				0.793
Non-user	147 (93.0%)	49 (90.7%)	196 (92.5%)	
Past user	4 (2.5%)	1 (1.9%)	5 (2.4%)	
Current user	7 (4.4%)	4 (7.4%)	11 (5.2%)	
Glucocorticoid				0.384
Non-user	95 (60.1%)	27 (50.0%)	122 (57.5%)	
Past user	15 (9.5%)	7 (13.0%)	22 (10.4%)	
Current user	48 (30.4%)	20 (37.0%)	68 (32.1%)	
β2-agonist				0.373
Non-user	128 (81.0%)	39 (72.2%)	167 (78.8%)	
Past user	5 (3.2%)	3 (5.6%)	8 (3.8%)	
Current user	25 (15.8%)	12 (22.2%)	37 (17.5%)	
Muscarinic antagonist				0.853
Non-user	127 (80.4%)	43 (79.6%)	170 (80.2%)	
Past user	6 (3.8%)	3 (5.6%)	9 (4.2%)	
Current user	25 (15.8%)	8 (14.8%)	33 (15.6%)	
NSAID				0.489
Non-user	139 (88.0%)	46 (85.2%)	185 (87.3%)	
Past user	9 (5.7%)	2 (3.7%)	11 (5.2%)	
Current user	10 (6.3%)	6 (11.1%)	16 (7.5%)	
Vitamin D				0.013
Non-user	116 (73.4%)	28 (51.9%)	144 (67.9%)	
Past user	13 (8.2%)	7 (13.0%)	20 (9.4%)	
Current user	29 (18.4%)	19 (35.2%)	48 (22.6%)	
Proton pump inhibitor				1
Non-user	76 (48.1%)	27 (50.0%)	103 (48.6%)	
Past user	17 (10.8%)	5 (9.3%)	22 (10.4%)	
Current user	65 (41.1%)	22 (40.7%)	87 (41.0%)	

	Survivor (n=158)	Deceased (n=54)	Total (n=212)	p value
Statin				0.023
Non-user	86 (54.4%)	18 (33.3%)	104 (49.1%)	
Past user	18 (11.4%)	8 (14.8%)	26 (12.3%)	
Current user	54 (34.2%)	28 (51.9%)	82 (38.7%)	
Immuno-suppressant				0.657
Non-user	150 (94.9%)	50 (92.6%)	200 (94.3%)	
Past user	3 (1.9%)	1 (1.9%)	4 (1.9%)	
Current user	5 (3.2%)	3 (5.6%)	8 (3.8%)	
Complications post diagnosis				
Cardiovascular				0.072
No	62 (39.2%)	14 (25.9%)	76 (35.8%)	
Recurrent	80 (50.6%)	37 (68.5%)	117 (55.2%)	
Novel	16 (10.1%)	3 (5.6%)	19 (9.0%)	
Respiratory				0.723
No	43 (27.2%)	14 (25.9%)	57 (26.9%)	
Recurrent	85 (53.8%)	27 (50.0%)	112 (52.8%)	
Novel	30 (19.0%)	13 (24.1%)	43 (20.3%)	
Renal				< 0.001
No	66 (41.8%)	7 (13.0%)	73 (34.4%)	
Recurrent	73 (46.2%)	41 (75.9%)	114 (53.8%)	
Novel	19 (12.0%)	6 (11.1%)	25 (11.8%)	
Recurrent complications				0.06
None	37 (23.4%)	5 (9.3%)	42 (19.8%)	
1	41 (25.9%)	11 (20.4%)	52 (24.5%)	
2	43 (27.2%)	20 (37.0%)	63 (29.7%)	
3	37 (23.4%)	18 (33.3%)	55 (25.9%)	
Novel complications				0.507
None	103 (65.2%)	38 (70.4%)	141 (66.5%)	
1	46 (29.1%)	11 (20.4%)	57 (26.9%)	
2	8 (5.1%)	4 (7.4%)	12 (5.7%)	
3	1 (0.6%)	1 (1.9%)	2 (0.9%)	

Values are n (%), unless otherwise specified. *Percentages total more than 100% because patients might have had non-malignant diseases in multiple organs.



(continued to next page)

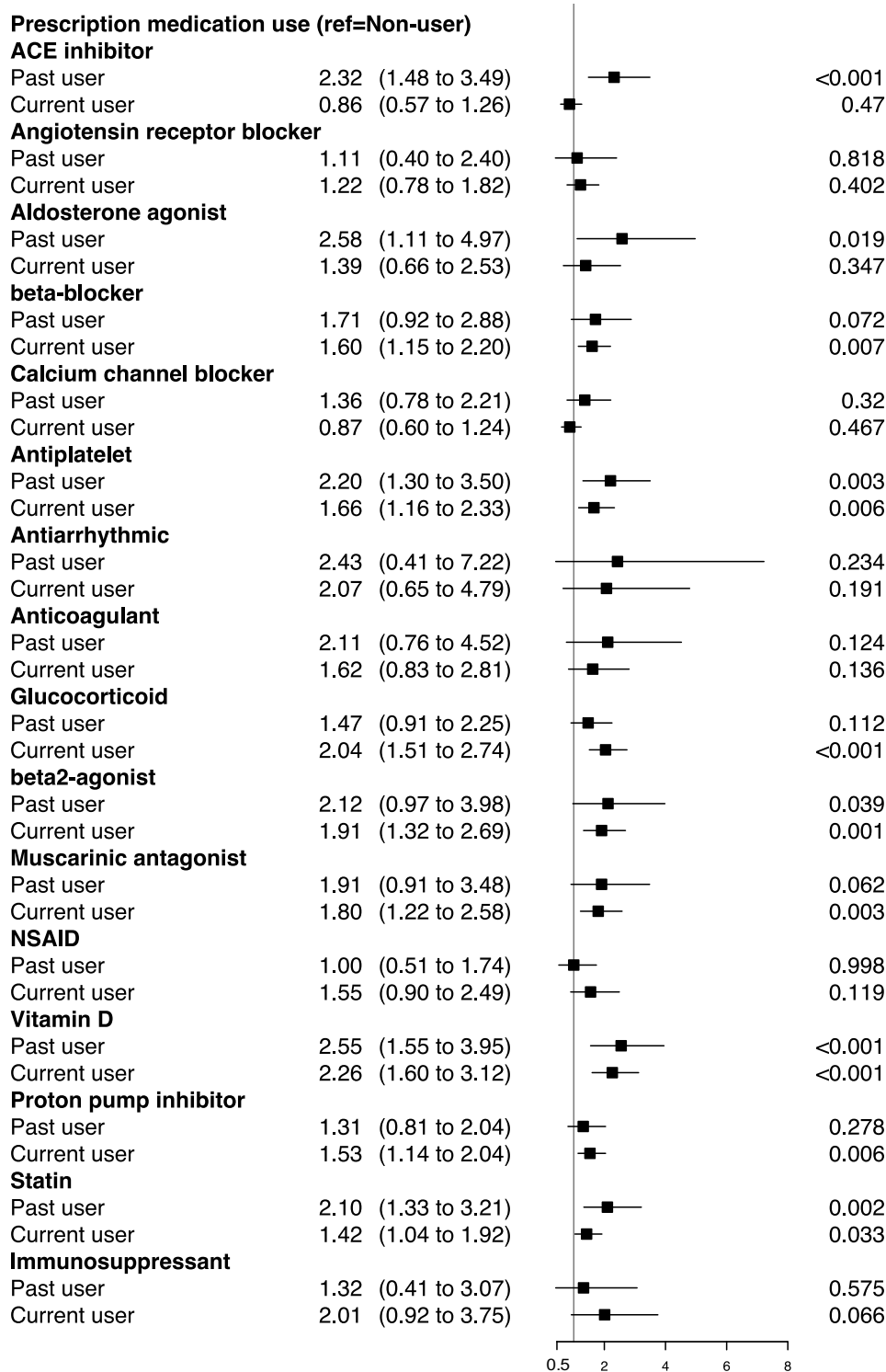
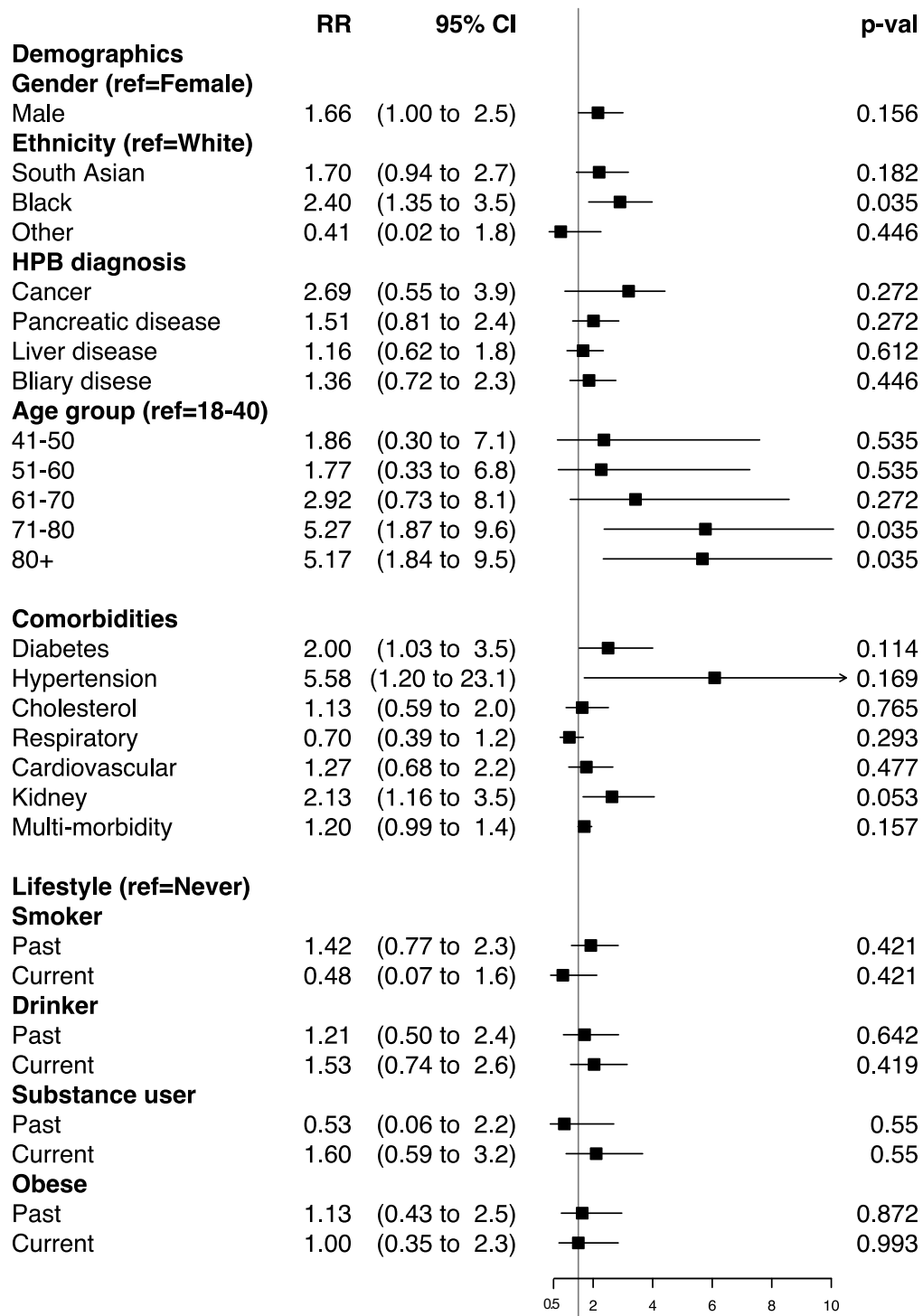


Figure 2 Relative risk estimates of COVID-19 for HPB patients with specific demographic, comorbidity, lifestyle and medication use characteristics. Relative risk estimates for demographic characteristics are mutually adjusted for each other, i.e., gender, ethnicity, age group and HPB diagnosis. For comorbidity, lifestyle and medication use characteristics, relative risk estimates are adjusted for gender, ethnicity, simplified age group (under and over 60) and HPB diagnosis.



(continued to next page)

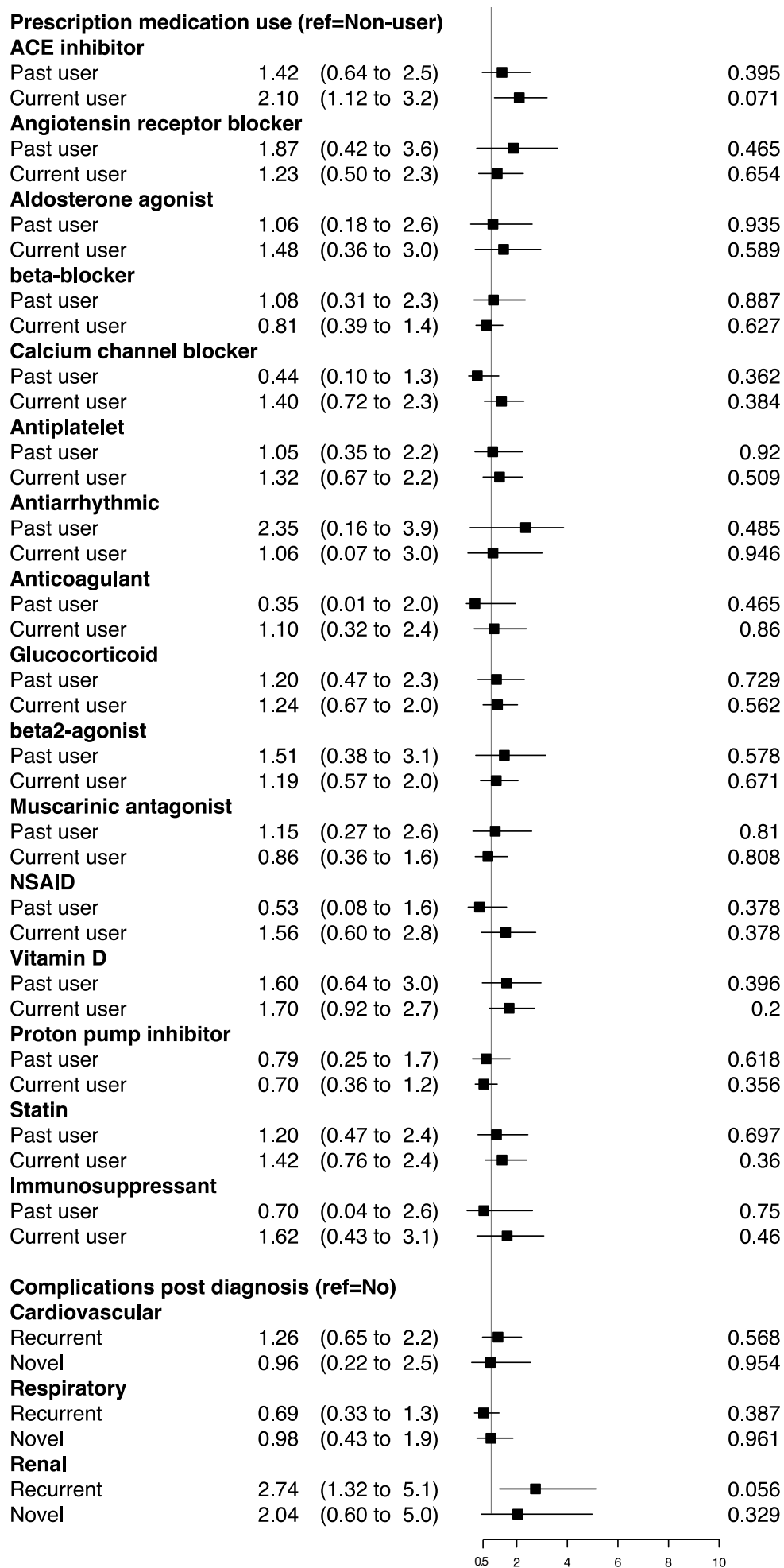


Figure 3 Relative risk estimates of COVID-19 related death for HPB patients with specific demographic, comorbidity, lifestyle, medication use and post COVID-19 diagnosis complication characteristics. Relative risk estimates for demographic characteristics are mutually adjusted for each other, i.e., gender, ethnicity, age group and HPB diagnosis. For comorbidity, lifestyle, medication use and post diagnosis complication characteristics, relative risk estimates are adjusted for gender, ethnicity, simplified age group (under and over 60) and HPB diagnosis.

DISCUSSION

We present, for the first time, data on a large, single-centre, multi-ethnic cohort of HPB patients, where primary, secondary and tertiary care EHRs were integrated to investigate the incidence and outcome of COVID-19, to demonstrate how key demographic characteristics and a range of comorbidities, lifestyle factors and medications are associated with SARS-CoV-2 infection and poor outcomes.

We noted a higher risk of COVID-19 in patients with prior pancreatic and liver conditions. The higher risk associated with liver condition is consistent with earlier findings.^{6 19} We can speculate that reduced pancreatic function, leading to altered digestion, and therefore gut flora, may make patients more susceptible to pathogens with an enteric route of infection:³⁰ an alternative mode of infection for SARS-CoV2, in addition to the well-characterised respiratory mode. Surprisingly the most vulnerable cancer patients had a low COVID-19 incidence rate, which may reflect the effectiveness of public health interventions such as shielding.³¹ However, at the same time, we noted a 12.7% death rate in this cohort (not due to COVID-19) in just four months, perhaps indicating the unintended, but potentially inevitable, negative sequelae of social distancing and reduced healthcare provisions for this group of patients as resources were diverted to COVID-19 affected patients.

Men had a higher risk of infection than women, which is consistent with previous reports,^{1 14} and could be due to a favourable genetic predisposition to the virus,³¹ and/or gender differences in risk behaviours. Our study also affirms older age, particularly over 70, as an established risk factor for COVID-19 incidence and mortality;^{2 4 5} however, this can be largely explained by the presence of multiple comorbidities in the older age groups.³²

COVID-19 statistics have highlighted a disproportionate effect on BAME ethnic groups with an increased risk of infection and poor outcomes.¹³⁻¹⁵ Our results confirm that Black and South Asian communities are at a higher risk of COVID-19 compared to the White ethnic group, with added mortality risk for the Black community. However, the increased risk noted in the South Asian group is likely to be associated with the underlying comorbidities in this group, in particular the higher prevalence of diabetes. Only a small part of the excess risk in the Black community is explained by multiple comorbidities. Therefore, further variables such as deprivation, occupational exposure, and living conditions might be useful to explore as potential factors behind the apparent vulnerability of the Black population to COVID-19.

All comorbidities such as diabetes, hypertension, high cholesterol, cardiovascular disease, kidney, and respiratory disease, were independently associated with an increased risk of COVID-19, whereas presence of kidney disease contributed to an added risk of death. These findings largely concur with previously reported cohort studies.^{4-6 11} Our results particularly highlight that for patients with an underlying kidney disease, a subsequent renal complication due to SARS-CoV-2 infection could be fatal. Acute kidney injury (AKI) and the presence of underlying kidney disease on admission have been associated with increased in-hospital deaths of COVID-19 patients.^{4 6 33} Therefore, patients with weaker kidney function, i.e., history of chronic kidney disease and/or on dialysis, need to be carefully managed to prevent further renal insult due to COVID-19.

The link between smoking and the susceptibility to COVID-19 is controversial in that current smoking status appeared to have a protective effect in our cohort, as has been observed by others, an aspect which cannot be mechanistically explained.^{5 34 35} Smoking leads to severe health consequences, which explains the greater risk observed in our cohort of past smokers with high prevalence of respiratory and cardiovascular diseases. Carefully designed analyses are needed to explore the association and causality between smoking status (both current and past), associated comorbidities and COVID-19.

Although substance mis-use leads to a plethora of cardio-respiratory and metabolic problems, its role in COVID-19 remains unexplored. To date, this is the first study providing a concrete measure of the risk of COVID-19 for substance mis-users. Our initial results showing that substance mis-users are at a heightened risk for COVID-19 irrespective of the comorbidities warrants a strong case for considering it as an independent risk factor for COVID-19, and may be related to high-risk behavioural patterns.^{36,37}

Previous studies have found a significant relationship between obesity and an increased risk of COVID-19,⁷ and subsequent hospitalisation,^{38 39} advanced levels of treatment,^{15,27} and death.^{4 6} However, our study does not suggest any particular effect of obesity on COVID-19 for patients with HPB conditions, who have a much higher prevalence rate of obesity (37.8%) compared to the UK general population (26%).²⁸ With 91% of patients in our cohort having a history of obesity (current or past), the difference in effects for potential susceptibility to COVID-19 are more detectable for other less prevalent factors – such as type 2 diabetes, cardiovascular disease or hypertension^{40 41} – which in turn might be the consequences of obesity in these patients' lifetime.

Concerns have been raised regarding the use of various medications with respect to the risk of COVID-19 and the subsequent outcome; and, our analyses contribute to that discussion for some of the widely used prescription drugs. An important finding from our study is the significant risk observed for vitamin D users, suggestive of a causal relationship between vitamin D deficiency or specific medical conditions (such as kidney failure) where Vitamin D prescription is prevalent and development of COVID-19.^{42 43} Given that BAME communities are observed to be at a high risk of COVID-19, and there is evidence that vitamin D deficiency is particularly common in these ethnic groups,⁴² further research on the relationship between vitamin D and COVID-19 is required, with a need to exclude confounding factors such as kidney disease. Our result also suggest that patients currently taking PPIs are more susceptible to SARS-CoV-2 infection, which concurs with a large population-based online survey conducted in the US.⁴⁴ The use of PPIs is highly prevalent in HPB patients for the management of gastrointestinal acid-related disorders, and the finding here supports the hypothesis that current use of PPIs might influence the susceptibility to SARS-CoV-2 infection in the gastrointestinal tract through reduction of stomach acid.^{44 45}

The literature is conflicted on the potential impact of antihypertensive drugs on COVID-19, particularly those that act as inhibitors to the renin–angiotensin–aldosterone system (RAAS) and upregulate ACE2 expression, suggesting these drugs may be

potential risk factors for infection,^{46 47} but also as having a protective effect on outcome.⁴⁸ However, recent studies found no underlying association between the use of different classes of antihypertensive drugs and the risk of developing COVID-19.¹⁶ With a high percentage of patients with hypertension in the study cohort, our finding that a high risk of COVID-19 is associated with past intake of ACE inhibitors or aldosterone agonists is suggestive of the potential risk of switching from one class of antihypertensive drug to another. This contributes to the timely debate of whether discontinuation of RAAS inhibitors and considering alternative antihypertensive therapy in times of COVID-19 would be a good practice or not.⁴⁹ A marginal association of current use of ACE inhibitors with COVID-19 related death suggests that any increased risk of mortality is likely to be small and will need to be scrutinised in future as more data accumulates.

A key strength of our study is that we have systematically identified the effect, or the lack of it, of individual demographic and clinical factors on the infection and mortality of COVID-19 in a cohort of over 15000 patients, robustly corrected for potential confounders in their evaluation. Our large population is highly representative of HPB patients from diverse ethnic groups, which contributes to the generalisability of our findings. Another strength is our use of linked electronic health records, harmonised for variations in coding that exist between different EHR systems. We ascertained patient demographics, lifestyle, comorbidities and medications by linking hospital records with pseudo-anonymized longitudinal primary care records, which substantially enrich the data that are recorded on hospital visits.

Retrospective EHR-based COVID-19 studies often suffer from incomplete or missing data on patient characteristics, including key variables such as BMI, ethnicity, smoking or pre-existing comorbidities.^{4 50} The missing data is particularly applicable to otherwise healthy COVID-19 patients with low use of healthcare services in the past. However, our patient cohort had already been treated or managed at BHNT hospitals at least once, and often referred through primary care, which led to near-complete data for this study, an added advantage of this study. For instance, ethnicity, a common demographic feature, is missing only for 2.9% of cases in our cohort while the rate is significantly higher in other studies (up to 20% of cases).^{4 50} The only variable with missing data frequency over 20% in our study is substance mis-use behaviour (50.6%). This is a unique lifestyle risk variable which is not yet explored - understandably due to a lack of recorded data as people often do not disclose this information to their clinicians,⁵¹ unless manifested in physical or mental disorders. Yet, the substance mis-use history of over 7700 patients included in this study provide a good indication of the impact of COVID-19 on this under-studied group.

Our study also has some important limitations. In our cohort definition, only patients visiting BHNT hospitals and who were given a confirmed COVID-19 diagnosis code or tested positive for SARS-CoV-2 RNA were considered as having COVID-19. This may have resulted in some patients being incorrectly identified as not having COVID-19, particularly if they had a positive swab test via NHS coronavirus test sites or using a home test kit. However, our cohort had specific medical conditions with a high prevalence of comorbidities listed under the NHS categorisation of higher risk populations.³ Any manifestation of COVID-19 related symptoms would have likely resulted in these patients receiving treatment at one of the BHNT hospitals, and hence

we were fairly confident on identifying all clinically relevant SARS-CoV-2 infections in our cohort within the three East London boroughs.

A related limitation is associated with the confirmation of East London residency for the study cohort. Patients' addresses (current or historic) are not collected under the umbrella study, which considers patients with HPB conditions (with the exception of cancer) treated or managed at BHNT hospitals as East London residents during the time of their care. The Royal London Hospital hosts one of the largest HPB centres in England, and supports suspected or confirmed HPB cancer patients from nearby geographical areas. As the umbrella study cohort is historic, we acknowledged the probability of people moving away from East London in the meantime. In absence of a patient's current address to confirm their residency at the outset of COVID-19 pandemic in the UK, we relied on an indirect measure to infer residency. We used a strict six-month window preceding the study to identify a patient's interaction with East London GPs or BHNT hospitals. Any supposed reduction in the cohort size due to unaccounted change of residency within that window should have affected the COVID and non-COVID group in equal proportion.

Due to the rarity of the outcome (SARS-CoV-2 infection) in the full HPB cohort, the effects reported in the study could be influenced by the smaller cohort size of COVID-19 cases. We recognise that larger sample sizes of COVID-19 patients are needed to fully understand the effect of SARS-CoV-2 in patients with HPB conditions. Our results are the first step towards this and require validation in similar national and international cohorts.

CONCLUSIONS

We believe that the findings from this single-centre study, focusing on patients with a particular medical condition and in an ethnically diverse area, highlight some considerations that could guide clinical care while we await an effective antiviral strategy for COVID-19. The current findings reinforce our understanding of some of the important risk factors for SARS-CoV-2 infection but with regards to pre-existing HPB conditions, and provide evidence that careful observation and management is necessary for patients with specific demographic, behavioural and/or medical backgrounds.

Contributors

ADU designed the study, and was responsible for undertaking and completing data collection, processing and analysis. HMK and CC oversaw the conduct and management of the study. All the authors contributed to the selection of study variables and interpretation post analysis. ADU wrote the first drafts of the report and all the authors made critical revisions.

Competing interests

All other authors declare no competing interests.

Ethics approval

All data utilised for this study were collected and processed under the East London Pancreatic Cancer Epidemiology (EL-PaC-Epidem) study at BHNT. Refer to the Methods section for further details.

Acknowledgements

ADU is supported by Health Data Research UK (HDR-UK) to conduct the umbrella study EL-PaC-Epidem, which is funded by the UK Medical Research Council. We gratefully acknowledge support provided by Pancreatic Cancer Research Fund (PCRF), for conducting public-patient engagement activity and facilitating ethical approval for EL-PaC-Epidem. We thank Chief Clinical Information Officer at Barts Health NHS Trust, members of the Discovery East London Programme Board, and developers at Learning Health Solutions Ltd for their support in facilitating collection of primary, secondary and tertiary care patient records. Finally, we acknowledge the contribution to the research made by several members of the PCRF Tissue Bank team, Bioinformatics Unit and clinical research fellows at Barts Cancer Institute through insightful medical and scientific discussion.

Patient and public involvement

Patients and the public were involved in evaluating the design of the umbrella study (EL-PaC-Epidem), particularly the notion of collection and processing of retrospective patient data without their consent. The support from NHS Confidentiality Advisory Group was obtained based on the positive opinion posed by patient and the public.

Funding

No additional funding has been received for this study.

Data availability statement

The corresponding author had full access to all the data in the study. All data relevant to the study are included in the article or uploaded as supplementary information. A comprehensive list of codelists and phenotyping algorithms used for the study variables are available on the EL-PaC-Epidem portal (<https://pac-epidem-el.bcc.qmul.ac.uk/covid-19>).

References

- 1 World Health Organization. Coronavirus disease (COVID-19): Situation Reports. <https://www.who.int/emergencies/diseases/novel-coronavirus-2019/situation-reports> (accessed July 30, 2020).
- 2 Centers for Disease Control and Prevention. Coronavirus Disease 2019 (COVID-19): People at Increased Risk and Other People Who Need to Take Extra Precautions. <https://www.cdc.gov/coronavirus/2019-ncov/need-extra-precautions/index.html> (accessed August 10, 2020).
- 3 NHS England. Coronavirus (COVID-19): People at Higher Risk from Coronavirus. <https://www.nhs.uk/conditions/coronavirus-covid-19/people-at-higher-risk/whos-at-higher-risk-from-coronavirus/> (accessed July 30, 2020)
- 4 Williamson EJ, Walker AJ, Bhaskaran K, et al. Factors associated with COVID-19-related death using OpenSAFELY. *Nature* 2020; **584** (7821): 430–36.
- 5 Deng G, Yin M, Chen X, Zeng F. Clinical determinants for fatality of 44,672 patients with COVID-19. *Crit Care* 2020; **24**: 179.
- 6 Docherty AB, Harrison EM, Green CA, et al. Features of 20 133 UK patients in hospital with covid-19 using the ISARIC WHO Clinical Characterisation Protocol: prospective observational cohort study. *BMJ* 2020; **369**: m1985.
- 7 Lighter J, Phillips M, Hochman S, et al. Obesity in Patients Younger Than 60 Years Is a Risk Factor for COVID-19 Hospital Admission. *Clin Infect Dis* 2020; **71** (15): 896–7.
- 8 Dai M, Liu D, Liu M, et al. Patients with Cancer Appear More Vulnerable to SARS-CoV-2: A Multicenter Study during the COVID-19 Outbreak. *Cancer Discov* 2020; **10** (6): 783–91.
- 9 Blanco JL, Ambrosioni J, Garcia F, et al. COVID-19 in patients with HIV: clinical case series. *Lancet HIV* 2020; **7** (5): e314–6.
- 10 BMJ Best Practice. Coronavirus disease 2019 (COVID-19) Complications. <https://bestpractice.bmj.com/topics/en-gb/3000168/complications> (accessed July 23, 2020)
- 11 Guan W-J, Liang W-H, Zhao Y, et al. Comorbidity and its impact on 1590 patients with COVID-19 in China: a nationwide analysis. *Eur Respir J* 2020; **55** (5): 2000547.
- 12 Miyara, M. et al. Low incidence of daily active tobacco smoking in patients with symptomatic COVID-19. *Qeios* 2020; doi: 10.32388/WPP19W.3
- 13 Platt L, Warwick R. Are some ethnic groups more vulnerable to COVID-19 than others? Institute for Fiscal Studies, May, 2020; <https://www.ifs.org.uk/inequality/wp-content/uploads/2020/04/Are-some-ethnic-groups-more-vulnerable-to-COVID-19-than-others-V2-IFS-Briefing-Note.pdf> (accessed July 23, 2020)
- 14 Public Health England. Disparities in the risk and outcomes of COVID-19. https://assets.publishing.service.gov.uk/government/uploads/system/uploads/attachment_data/file/889195/disparities_review.pdf August, 2020. (accessed August 14, 2020).
- 15 Intensive Care National Audit and Research Centre. ICNARC report on COVID-19 in critical care. <https://www.icnarc.org/DataServices/Attachments/Download/af7be2d4-bdcd-ea11-9127-00505601089b> July 24, 2020. (accessed August 2, 2020).
- 16 National Institute for Health and Care Excellence. Coronavirus (COVID-19) Rapid Evidence Summaries. <https://www.nice.org.uk/covid-19#rapid-es> (accessed July 16, 2020)

- 17 Brenner EJ, Ungaro RC, Geary RB, et al., Corticosteroids, but not TNF Antagonists, are Associated with Adverse COVID-19 Outcomes in Patients With Inflammatory Bowel Diseases: Results from an International Registry. *Gastroenterology* 2020; **159** (2): 481–91.
- 18 Zhang H, Kang Z, Gong H, et al. Digestive system is a potential route of COVID-19: an analysis of single-cell coexpression pattern of key proteins in viral entry process. *Gut* 2020; **69**: 1010–8.
- 19 Mantovani A, Beatrice G, Dalbeni A. Coronavirus disease 2019 and prevalence of chronic liver disease: A meta-analysis. *Liver Int* 2020; **40**(6): 1316–20.
- 20 Gubatan J, Levitte S, Patel A, et al. Prevalence, risk factors and clinical outcomes of COVID-19 in patients with a history of pancreatitis in Northern California. *Gut* 2020; Published Online: June 3, 2020. doi: 10.1136/gutjnl-2020-321772.
- 21 McNabb-Baltar J, Jin DX, Grover AS, et al. Lipase elevation in patients with COVID-19. *Am J Gastroenterol* 2020; Published Online: Jun 3, 2020. doi: 10.14309/ajg.0000000000000732.
- 22 Hadi A, Werge M, Kristiansen KT, et al. Coronavirus Disease-19 (COVID-19) associated with severe acute pancreatitis: case report on three family members. *Pancreatology* 2020; **20** (4): 665–7.
- 23 Katabathina VS, Flaherty EM, Dasyam AK, et al. "Biliary Diseases with Pancreatic Counterparts": Cross-sectional Imaging Findings. *Radiographics* 2016; **36** (2): 374–92.
- 24 UK Government. Coronavirus cases in the UK: daily updated statistics. <https://www.gov.uk/guidance/coronavirus-covid-19-information-for-the-public> (last accessed August 2, 2020)
- 25 London Datastore. Coronavirus (COVID-19) Cases: Greater London Authority (GLA). <https://data.london.gov.uk/dataset/coronavirus--covid-19--cases> (accessed August 4, 2020)
- 26 Office for National Statistics. Deaths involving COVID-19 by local area and socioeconomic deprivation: deaths occurring between 1 March and 30 June 2020. <https://www.ons.gov.uk/peoplepopulationandcommunity/birthsdeathsandmarriages/deaths/bulletins/deathsinvolvingcovid19bylocalareasanddeprivation/deathsoccurringbetween1marchand30june2020> July 24, 2020. (accessed August 4, 2020)
- 27 Barts Health NHS Trust. <https://www.bartshealth.nhs.uk/about-us> (accessed August 10, 2020)
- 28 London Datastore. Ethnic Groups by Borough. <https://data.london.gov.uk/dataset/ethnic-groups-borough> (accessed August 4, 2020)
- 29 East London Health & Care Partnership. <https://www.eastlondonhpc.nhs.uk/aboutus/> (accessed August 4, 2020)
- 30 Thaweerat W. Current evidence on pancreatic involvement in SARS-CoV-2 infection. *Pancreatology* 2020; **20** (5): 1013–4.
- 31 Public Health England. Guidance on shielding and protecting people who are clinically extremely vulnerable from COVID-19. <https://www.gov.uk/government/publications/guidance-on-shielding-and-protecting-extremely-vulnerable-persons-from-covid-19/guidance-on-shielding-and-protecting-extremely-vulnerable-persons-from-covid-19> (accessed July 16, 2020).
- 32 Gibson WT, Evans DM, An J, Jones SJM. ACE 2 Coding Variants: A Potential X-linked Risk Factor for COVID-19 Disease. Preprint published online: April 14, 2020. doi: <https://doi.org/10.1101/2020.04.05.026633>
- 33 World Health Organization, Europe. Statement – Older people are at highest risk from COVID-19, but all must act to prevent community spread.

<https://www.euro.who.int/en/health-topics/health-emergencies/coronavirus-covid-19/statements/statement-older-people-are-at-highest-risk-from-covid-19,-but-all-must-act-to-prevent-community-spread> April 2, 2020. (accessed June 12, 2020)

34 Cheng Y, Luo R, Wang K, et al. Kidney disease is associated with in-hospital death of patients with COVID-19. *Kidney Int* 2020; **97** (5): 829–38.

35. Rentsch CT, Kidwai-Khan F, Tate JP, et al. Covid-19 testing, hospital admission, and intensive care among 2,026,227 United States veterans aged 54–75 years. Preprint at *medRxiv* April 14, 2020; doi: <https://doi.org/10.1101/2020.04.09.20059964>.

36 Ornell F, Moura HF, Scherer JN, et al. The COVID-19 pandemic and its impact on substance use: Implications for prevention and treatment. *Psychiatry Res* 2020; **289**: 113096.

37 Dubey MJ, Ghosh R, Chatterjee S, Biswas P, Chatterjee S, Dubey S. COVID-19 and addiction. *Diabetes Metab Syndr* 2020; **14** (5): 817–23.

38. Khawaja AP, Warwick AN, Hysi PG, et al. Associations with COVID-19 hospitalisation amongst 406,793 adults: the UK Biobank prospective cohort study. Preprint at *medRxiv* May 11, 2020; doi: <https://doi.org/10.1101/2020.05.06.20092957>

39 Petrilli CM, Jones SA, Yang J, et al. Factors associated with hospitalization and critical illness among 4,103 patients with COVID-19 disease in New York City. Preprint at *medRxiv* April 11, 2020. doi: 10.1101/2020.04.08.20057794

40 Public Health England. Excess Weight and COVID-19: Insights from new evidence

https://assets.publishing.service.gov.uk/government/uploads/system/uploads/attachment_data/file/907966/PHE_insight_Excess_weight_and_COVID-19_FINAL.pdf
July, 2020 (accessed August 5, 2020)

41 World Health Organization. Fact sheets: Obesity and overweight <https://www.who.int/en/news-room/fact-sheets/detail/obesity-and-overweight> (accessed August 5, 2020)

42 Hastie CE, Mackay DF, Ho F, et al. Vitamin D concentrations and COVID-19 infection in UK Biobank. *Diabetes Metab Syndr* 2020; **14** (4): 561–5.

43 D'Avolio A, Avataneo V, Manca A, et al. 25-Hydroxyvitamin D Concentrations Are Lower in Patients with Positive PCR for SARS-CoV-2 *Nutrients* 2020; **12** (5):1359.

44 Almario CV, Chey WD, Spiegel BMR. Increased risk of COVID-19 among users of proton-pump inhibitors. *Am J Gastroenterol* 2020; Preprint at: [https://journals.lww.com/ajg/Documents/AJG-20-1811_R1\(PUBLISH%20AS%20WEBPART\).pdf](https://journals.lww.com/ajg/Documents/AJG-20-1811_R1(PUBLISH%20AS%20WEBPART).pdf)

45 Lee SW, Yeniova AO, Moon SY, et al. Severe clinical outcomes of COVID-19 associated with proton pump inhibitors: a nationwide cohort study with propensity score matching. *Gut* 2020; Preprint Published Online: July 30, 2020. doi: 10.1136/gutjnl-2020-322248.

46. O'Mara GJ. Could ACE inhibitors and particularly ARBs increase susceptibility to COVID-19 infection? *BMJ* 2020; **368**: m406.

47 Fang L, Karakiulakis G, Roth M. Are patients with hypertension and diabetes mellitus at increased risk for COVID-19 infection? *Lancet Respir Med* 2020; **8** (4): e21.

48 Gurwitz D. Angiotensin receptor blockers as tentative SARS-CoV-2 therapeutics. *Drug Dev Res* 2020; **81** (5): 537–40.

49 Ciulla MM. Switching to another antihypertensive effective drug when using ACEIs/ARBs to treat arterial hypertension during COVID-19. *Eur Heart J* 2020; **41** (19): 1856.

50 Perez-Guzman PN, Daunt A, Mukherjee S, et al. Clinical characteristics and predictors of outcomes of hospitalized patients with COVID-19 in a multi-ethnic London NHS Trust: a retrospective cohort study. *Clin Infect Dis* 2020; Preprint published online: August 7, 2020. doi: 10.1093/cid/ciaa1091.

51 McNeely J, Kumar PC, Rieckmann T, et al. Barriers and facilitators affecting the implementation of substance use screening in primary care clinics: a qualitative study of patients, providers, and staff. *Addict Sci Clin Pract* 2020; **13** (1): 8.