

## **Stool banking for fecal microbiota transplantation: methods and operations at a large stool bank**

Justin Chen PhD, Amanda Zaman MSN, Bharat Ramakrishna MBBS, OpenBiome Team<sup>†</sup>, Scott W. Olesen PhD\*

OpenBiome, Cambridge, MA, USA

### ORCIDs

JC 0000-0003-4924-106X

AZ 0000-0002-0743-1159

BR 0000-0003-3395-9077

SWO 0000-0001-5400-4945

<sup>†</sup> Group members listed in the Acknowledgements

\* Correspondence: [solesen@openbiome.org](mailto:solesen@openbiome.org), 2067 Massachusetts Avenue, 3rd floor, Cambridge, MA 02140

Word count: 5343

Number of display items: 5

1 **ABSTRACT** (213 words)

2 **Objectives:** Fecal microbiota transplantation (FMT) is a recommended therapy for recurrent  
3 *Clostridioides difficile* infection and is being investigated as a potential therapy for dozens of  
4 microbiome-mediated indications. Stool banks centralize FMT donor screening and FMT  
5 material preparation with the goal of improving the safety, quality, convenience, and  
6 accessibility of FMT material. Although there are published consensus on donor screening  
7 guidelines, there are few reports about the implementation of those guidelines in functioning  
8 stool banks.

9  
10 **Methods:** To help inform consensus standards with data gathered from real-world settings and,  
11 in turn, to improve patient care, here we describe the general methodology used in 2018 by  
12 OpenBiome, a large stool bank, and its outputs in that year.

13  
14 **Results:** In 2018, the stool bank received 7,536 stool donations from 210 donors, a daily  
15 average of 20.6 donations, and processed 4,271 of those donations into FMT preparations. The  
16 median time a screened and enrolled stool donor actively donated stool was 5.8 months. The  
17 median time between the manufacture of an FMT preparation and its shipment to a hospital or  
18 physician was 8.9 months. Half of the stool bank's partner hospitals and physicians ordered an  
19 average of 0.75 or fewer FMT preparations per month.

20  
21 **Conclusions:** Further knowledge sharing should help inform refinements of stool banking  
22 guidelines and best practices.

## 23 INTRODUCTION

24 Fecal microbiota transplantation (FMT), the transfer of minimally manipulated stool and its  
25 associated microbiota from a healthy donor into the gastrointestinal tract of the patient,<sup>1,2</sup> is a  
26 recommended investigational therapy for recurrent *Clostridioides difficile* infection.<sup>3-7</sup> *C. difficile*  
27 infection is the most common healthcare-associated infection in the United States, with 462,000  
28 cases and 20,500 deaths in the US in 2017.<sup>8,9</sup> FMT's reported safety profile and efficacy in  
29 preventing recurrence of *C. difficile* infection, approximately 80-90%,<sup>10-18</sup> has inspired research  
30 using FMT to treat a wide range of microbiome-mediated indications.<sup>2,19</sup>

31  
32 There are two main models supplying stool for FMT: *patient-selected donors* and *stool*  
33 *banking*.<sup>20-25</sup>

34  
35 Under the patient-selected donor model, the patient or their guardian identifies their own stool  
36 donor candidate. The treating physician screens the candidate and processes the donor's stool  
37 into an FMT preparation. The donor typically donates material for only that single patient. This  
38 approach places substantial logistical burden on the physician<sup>26</sup> and creates delays between the  
39 determination that FMT is indicated and the delivery of therapy. For example, if a patient's first  
40 candidate donor fails the screen, another must be found, who may also fail the screen, all  
41 before the patient can be treated.<sup>27,28</sup> Furthermore, the patient-directed model poses certain  
42 risks. First, different practitioners may use variable screening standards, potentially exposing  
43 the patient to substandard screening. Second, the donor stool may be processed into an FMT  
44 treatment in an uncontrolled, *ad hoc* workspace, like a physician's office, increasing the risk of  
45 contamination. Barriers to prompt access to FMT have also been reported as reasons for  
46 patients to seek "do-it-yourself" (DIY) FMT, which comes with significant risk to patient safety.<sup>29</sup>

47

48 Stool banks address many of the logistical limitations inherent to the patient-selected donor  
49 model. A stool bank is a centralized facility that screens donors, processes stool, stores FMT  
50 preparations, fulfills clinicians' and researchers' requests for those preparations, and monitors  
51 the safety and efficacy of the material.<sup>22,28</sup> Centralized donor screening enables more rigorous  
52 and consistent safety standards, with donor qualification rates as low as 2.5%.<sup>30</sup> Centralized  
53 processing is more cost-efficient and controlled: qualified donors provide material that can be  
54 used to treat many patients, and a purpose-built facility allows for stringent manufacturing  
55 quality standards.<sup>23,25,31</sup> Centralized distribution minimizes the delay in treating the patient, as  
56 physicians can access a well-screened, quality-assured FMT preparation delivered overnight.  
57 Centralized safety reporting may also contribute to improved FMT safety through a better  
58 understanding of the risks associated with human-derived microbial therapeutics and  
59 subsequent implementation of improved screening and manufacturing processes.

60  
61 Although there are differences between stool banks, in part due to variation in FMT regulation  
62 between countries,<sup>32</sup> stool banks generally adhere to a common-six part methodology, shown  
63 below.<sup>5,21,23–25,31,33,34</sup> In some banks, these six elements are joined together by rigorous quality  
64 systems.<sup>23,25</sup>

- 65
- 66 1. Donor recruitment: Encourage candidate donors to undergo evaluation
  - 67 2. Donor evaluation: Assess whether candidate donors qualify to donate stool
  - 68 3. Manufacturing: Process donated stool into formulations suitable for use in FMT
  - 69 4. Health monitoring and release: Confirm donor health before releasing FMT material from  
70 quarantine
  - 71 5. Fulfillment: Provide FMT material to clinicians and researchers, and track that material
  - 72 6. Patient Safety: Evaluate FMT safety and quality, and respond to emerging safety and  
73 quality issues

74

75 Despite the field's coalescence around this overall methodology, stool banking continues to  
76 evolve, delivering material that is more rigorously screened and more carefully prepared, with  
77 greater efficiency and reliability. Because consensus guidelines for stool bank operations have  
78 been strongly informed by the practice of existing stool banks,<sup>20,31,34,35</sup> improved sharing of  
79 different banks' methodologies,<sup>36</sup> exemplified by recent reports from English and Danish stool  
80 banks that emphasized the importance of quality management systems,<sup>23,25</sup> should help  
81 advance consensus standards and, in turn, to improve patient care. Improved sharing will also  
82 support the development of other stool banks and invite broader participation in the  
83 improvement of stool banking methods.

84

85 Here we report on the methodology used in 2018 by OpenBiome (Cambridge, MA, USA), a  
86 large stool bank, to fulfill clinicians' requests for FMT material to treat recurrent *C. difficile*  
87 infection under enforcement discretion.<sup>37</sup> Since its founding in 2013, this bank has shipped more  
88 than 56,000 FMT preparations to a network of 1,250 healthcare facilities. We describe the  
89 bank's overall methodology in 2018, the most recent complete year when this study began, and  
90 the bank's outputs in that year.

91

## 92 **METHODS**

93 The stool bank follows phase-appropriate current good manufacturing practices (cGMP),<sup>38</sup>  
94 which includes well-defined procedures, a highly-controlled manufacturing environment, and  
95 meticulous record-keeping.

96

97 In 2018, the bank used the six-part methodology described above and outlined previously.<sup>24</sup>  
98 This methodology does not necessarily reflect the bank's current operation as changes are  
99 continuously being made to stool bank operations based on the latest scientific evidence and

100 regulatory guidance. The bank fulfills requests for FMT material to treat *C. difficile* infection  
101 under enforcement discretion as well as requests for material for research purposes. Some  
102 procedures differ between enforcement discretion and research. For clarity, only the  
103 enforcement discretion procedures are described here.

104

## 105 **1. Donor recruitment**

106 The bank encourages members of the public between 18 and 50 years old to enroll as stool  
107 donors using conventional press and social media campaigns. Because the bank requires that  
108 donated stool be passed and donated inside the stool bank's facility, rather than at home, the  
109 campaigns only target the metropolitan area where the stool bank is located. Individuals  
110 interested in becoming stool donors complete an initial, online health questionnaire focused on  
111 eligibility criteria that commonly leads to *a priori* exclusion. Important categories used for  
112 preliminary screening include logistics (e.g., ability to donate at the stool bank at least three  
113 times per week), infectious risk (e.g., high risk travel history),<sup>39</sup> and compromised microbial  
114 diversity (e.g., recent antibiotic use).<sup>30</sup> Candidates who meet eligibility on the pre-screen  
115 questionnaire are invited for an on-site evaluation.

116

## 117 **2. Donor evaluation**

118 During on-site evaluation, candidates provide informed consent and sign an affidavit attesting  
119 that the health information they provide is true and complete.<sup>40</sup> Next, candidates complete an in-  
120 depth donor health questionnaire, which includes questions about gastrointestinal comorbidities,  
121 metabolic conditions, neuro-psychiatric comorbidities, infectious diseases, autoimmune  
122 diseases, atopy, asthma and allergies, malignancy (e.g., colorectal cancer), surgeries or other  
123 medical history, current symptoms and behaviors (e.g., bowel habit), medications (e.g.,  
124 antimicrobial therapy), diet, social history, and family history. The screening criteria were  
125 outlined by this group in more detail previously.<sup>30</sup> A clinical staff member then meets with the

126 candidate to review and clarify their answers. Next, the clinical staff member measures the  
127 candidate's body temperature, blood pressure, heart rate, respiratory rate, body mass index,  
128 and waist circumference. Finally, a supervising physician reviews the questionnaire and vital  
129 signs.

130  
131 Candidates who pass the in-person clinical assessment undergo a three-part laboratory  
132 screening: blood, stool, and nasal swab. Samples are sent to external laboratories for testing  
133 (Table 1), including tests suggested by the European FMT Workgroup guidance and  
134 international consensus recommendations.<sup>31,41</sup> Any abnormality is reviewed by the bank's  
135 supervising clinician. Candidates who pass the laboratory screens are accepted into the stool  
136 donation program. Candidates who fail the laboratory screens are either temporarily deferred or  
137 permanently excluded from the program. For example, if any screened multi-drug resistant  
138 organism is detected, the candidate is permanently excluded as a stool donor, but a patient  
139 carrying a transient enteric pathogen may be invited to re-screen after a temporary deferral.  
140 Candidates and donors are informed of any significant incidental findings observed during the  
141 health evaluation and monitoring process and referred to the appropriate healthcare services.  
142 To protect the security and quality of the donor program, candidates are generally not informed  
143 about the reason for their deferral or exclusion other than to share significant incidental findings.

144

### 145 **3. Manufacturing**

146 Donors provide donations by visiting the stool bank's collection facility, where they are given a  
147 stool collection kit. After passing the stool on site, donors close the container's lid and place it in  
148 a resealable plastic bag for secondary containment. A staff member labels the donation with a  
149 donor identification number and the time of passage. The donor's health status is re-assessed  
150 at each donation as described below. Donors are remunerated for the time and travel required  
151 to provide each processed donation.

152

153 The donation is transferred to a dedicated biosafety cabinet that is cleaned with a sporicidal  
154 agent and ethanol. A trained technician opens the container and evaluates the stool for any  
155 visible pathology (e.g., contamination, discoloration, blood, or mucus). Donations with poor  
156 consistency (Bristol stool scale outside 3-5) or visual pathology are destroyed, and clinical staff  
157 are notified of the abnormality. Donations that do not meet a minimum weight of 55 grams are  
158 not cost-effective to process and are destroyed. After visual inspection and weighing, the stool  
159 is transferred to a sterile 330  $\mu\text{m}$  filter bag, diluted in a sterile, US Pharmacopeia-grade glycerol-  
160 saline solution (12.5% glycerol in 0.90% w/v NaCl in water), and fully homogenized while still in  
161 the filter bag using a paddle blender for at least 180 seconds. Fibrous material remains on one  
162 side of the filter while bacteria, small molecules, and water are pressed to the other side of the  
163 filter.

164

165 The filtrate is diluted and aliquoted depending on the final FMT preparation. Each FMT  
166 preparation is derived from a single donor; filtrates from different donors are never mixed. All  
167 donations are processed within six hours of the donor's initial passage, and material that cannot  
168 be processed in time is destroyed.<sup>42</sup>

169

170 The bank produces two liquid preparations and one capsule preparation. The first liquid  
171 preparation is 250 mL diluted at a 10:1 ratio (i.e., approximately 22.7 g of stool per preparation)  
172 and is intended for delivery by colonoscopy, sigmoidoscopy, or enema delivery. The second  
173 liquid preparation is 30 mL diluted at a 5:2 ratio (i.e., approximately 8.6 g of stool) and is  
174 intended for delivery by esophagogastroduodenoscopy or nasoenteric tube. Liquid FMT  
175 preparations are transferred to sterile polyethylene terephthalate bottles using sterile,  
176 disposable serological pipettes.

177



178 The capsule formulation is designed to be swallowed and resist degradation from stomach acid  
179 until reaching the small intestine.<sup>43</sup> Each capsule (size 00) consists of approximately 275 mg of  
180 stool. The stool, combined with a lipid buffer and a glycerol buffer, is contained within an inner  
181 gelatin capsule and an outer acid-resistant shell. A capsule dose consists of 30 capsules  
182 (approximately 8.25 g of stool). From each donation that is processed into an FMT preparation,  
183 a 30 mL safety aliquot is set aside for safety testing and quality purposes. Additional aliquots  
184 are retained for safety testing or research purposes. All liquid and capsule preparations are  
185 sealed with tamper-evident bottle caps and stored at -80 °C.

186  
187 To support traceability, each FMT preparation and aliquot is labeled with a barcode that links it  
188 to the donation. All steps in the manufacturing process are monitored and logged according to  
189 cGMP standards. Completed FMT preparations are kept in quarantine until released, as  
190 described below.

191

#### 192 **4. Health monitoring and material release**

193 A donor's health and eligibility for continued donation are continually assessed by five  
194 mechanisms.

195

196 First, donors must report travel or change in health status while actively part of the program,  
197 including fever, cough, congestion, change in bowel habit, nausea, vomiting, seasonal allergies,  
198 medical or dental procedures, bodily injury, and use of oral or topical over-the-counter  
199 medications. If an illness or travel event is reported, the donor is further evaluated by a member  
200 of the clinical staff, who determines if the donor should be temporarily deferred or permanently  
201 excluded from the stool donation program. For example, travel to certain countries entails a high  
202 risk for acquiring antibiotic-resistant bacteria and may lead to temporary deferral or permanent

203 exclusion. Any donor who is temporarily deferred undergoes a partial or complete re-screening  
204 before being re-admitted to the program.

205

206 Second, at each stool donation, donors complete a short health questionnaire. If the donor  
207 reports a change in health status or a clinical staff member's direct observation of the donor  
208 leads them to suspect a change in the donor's health status, a clinician interviews the donor to  
209 gather additional information. Clinical staff may determine that the donation should be  
210 destroyed, and the donor may be temporarily deferred or permanently excluded. If a donor is  
211 temporarily deferred because of a transient illness, the donor must pass a partial or complete  
212 re-screening before being re-admitted to the program.

213

214 Third, if a manufacturing technician observes a suspected stool pathology in the donation as  
215 described above, the technician takes a photograph of that donation, destroys the donation, and  
216 shares the photograph with the clinical staff. Clinical staff review the photograph and follow up  
217 with the donor to determine if the abnormal stool pathology is related to a risk of infection or an  
218 underlying disease.

219

220 Fourth, donors must agree to undergo random health checks. A clinician examines the donor's  
221 vital signs and assesses the donor's health status, with a focus on bowel habits, infectious risk  
222 factors, and new behaviors that may impact the microbiome. If the clinician detects any clinical  
223 concerns, the donor may be temporarily deferred or permanently excluded. Any donor who is  
224 temporarily deferred undergoes a partial or complete re-screening before being re-admitted to  
225 the program.

226

227 Finally, every donor repeats the complete set of clinical and laboratory assessments, the same  
228 set that they passed when first enrolling as a donor, approximately every 60 days. These re-

229 assessments “bookend” 60-day collection periods. FMT preparations produced from stool  
230 donations during a collection period are released from quarantine only after the donor passes  
231 the second full assessment at the end of the collection period. It is not the case that every  
232 donation is screened. Instead, the assessments of a donor’s health at the beginning and end of  
233 a 60-day period and a review of all clinical data collected during the collection window are taken  
234 as sufficient evidence that the intervening donations are fit for use as FMT preparations.<sup>24,44</sup>

235  
236 Individuals infected with HIV or other pathogens may not test positive until some days after their  
237 initial infection.<sup>45</sup> To account for the possibility that a donor acquires a pathogen with an  
238 extended seroconversion time, FMT material release is offset from reassessments: FMT  
239 preparations produced from stool donated less than 21 days before the reassessment are only  
240 released if the donor passes the assessment at the end of the following 60-day collection  
241 period.

242  
243 Material is released from quarantine only after a full review of all clinical and laboratory data in  
244 each collection period and requires approval from two clinicians and one quality assurance staff  
245 member. All material releases are performed in accordance with cGMP standards.

246  
247 If a donor newly tests positive for any infectious pathogens or other clinically significant  
248 abnormalities indicating there may be a potential underlying exclusionary medical condition, all  
249 FMT preparations produced from the corresponding collection period are destroyed. Donors  
250 who newly test positive for certain pathogens, including *C. difficile* as well as chronic infections  
251 like hepatitis B and HIV, are permanently excluded from the donor program and all material  
252 collected since the donor’s last screening is destroyed. In other cases, such as rotavirus,  
253 infections are transient, and donors are temporarily deferred. As stated above, temporarily

254 deferred donors must undergo a partial or complete re-screening before being re-admitted to  
255 the program.

256

## 257 **5. Fulfillment**

258 The stool bank provides FMT preparations to gastroenterologists and infectious disease  
259 physicians treating patients with recurrent *C. difficile* infection not responsive to standard  
260 therapies.<sup>37</sup> The bank also fulfills requests for FMT material for research purposes, but  
261 procedures for fulfillment and patient safety monitoring in that case differ. For clarity, only the  
262 enforcement discretion procedures are described here.

263

264 The stool bank's website provides information on FMT regulations in the United States,  
265 description of FMT treatment modalities, and clinical guidance, as well as registration forms that  
266 interested facilities must complete and submit in order to receive material from the bank.  
267 Institutional shipping and billing information, as well as contact information for material control,  
268 the overseeing physician, and adverse event reporting, are collected during registration. When  
269 registered partners submit a written purchase order, FMT preparations are removed from  
270 storage at -80 °C and shipped via overnight air on dry ice in Styrofoam containers. Each  
271 container is shipped with a temperature indicator verifying that the preparations remained frozen  
272 during shipping.

273

274 Registered physicians or healthcare facilities who received stool bank material submit three  
275 kinds of information back to the stool bank. First, they must complete a log confirming that each  
276 FMT preparation was frozen upon arrival and report whether it remains in inventory, was used in  
277 treatment, or destroyed due to expiration or other reasons. Second, they are asked to complete  
278 a clinical follow-up form for each patient within 8 weeks of the FMT procedure, indicating the  
279 severity and subtype of *C. difficile* infection that was treated and the patient's outcome following

280 FMT. Finally, they are contractually required to report any serious adverse event (defined as  
281 death, life-threatening health event, hospitalization, disability or permanent damage, congenital  
282 anomaly, or other serious important medical event) to the stool bank within 24 hours of the  
283 event.

284

## 285 **6. Patient Safety**

286 When a clinician reports a serious adverse event to the bank, the bank begins an investigation.  
287 Safety staff appraise the event with respect to seriousness, severity, expectedness, and  
288 relatedness. Safety staff engage subject matter experts, including the stool bank's clinical  
289 advisory board, which is an independent group of gastroenterologists, infectious diseases  
290 specialists, and other subject matter experts.

291

292 Barcoding, tracking, and quality assurance systems allow the bank to identify the donation and  
293 donor associated with an adverse event. If the adverse event presents a risk to other individuals  
294 who would receive material from the same donor, material from that donor is immediately  
295 placed in quarantine, and no more is shipped until safety and quality staff have determined that  
296 it is safe to do so. If the event involves an infectious pathogen, safety and quality staff can  
297 retrieve the safety aliquot taken from that donation and test it for the presence of the pathogen.  
298 Depending on the investigation's findings, material from the donor may be destroyed or recalled.  
299 The donor may be permanently excluded from the donation program.

300

301 Findings from the investigation are entered into a safety database with MedDRA terminology.  
302 (MedDRA, the Medical Dictionary for Regulatory Activities terminology, is the international  
303 medical terminology developed under the auspices of the International Council for  
304 Harmonisation of Technical Requirements for Pharmaceuticals for Human Use.) Data are  
305 analyzed through an analysis of similar events to detect safety signals which may indicate a

306 trend or safety risk. Serious adverse events considered related to the FMT are reported to the  
307 appropriate regulatory authorities through the Council for International Organizations of Medical  
308 Sciences or the MedWatch<sup>46</sup> system. Regular reviews of safety data inform additional safety  
309 practices and risk management strategies in a continuous improvement process.

310

## 311 RESULTS

312 Between March 2018 and July 2018, 731 candidate stool donors completed a survey asking for  
313 their motivations for donating stool. Most donors' motivations include helping *C. difficile* infection  
314 patients, advancing research, and receiving the per-donation compensation (Figure 1). Donors  
315 who pass screenings and enroll in the program remain for varying amounts of time: more than  
316 half of donors who donated in 2018 were active donors for less than 6 months, but one donor  
317 who donated in 2018 had been active for 3.4 years (Figure 2).

318

319 In 2018, the stool bank received 7,536 donations (Figure 3A) from 210 donors (Figure 3B), an  
320 average of 20.6 donations per day. 7% of donations (516/7,536) were used for stool screening  
321 purposes, to assess the donors' health. 36% of donations (2,749/7,536) were rejected due to  
322 the donation's low weight, poor Bristol stool score, visual stool pathology, or because the  
323 donation could not be processed within 6 hours of passage. The remaining 57% of donations  
324 (4,271/7,536) were processed into liquid or capsule FMT preparations (Figure 3A). Donors  
325 varied in their productivity and the proportion of their samples that were rejected or processed  
326 (Figure 3B). The time between a donation's passage and when it was processed into an FMT  
327 formulation varied but was always less than 6 hours (Figure 3C).

328

329 By 1 July 2020, the bank had shipped 15,323 of the FMT preparations produced in 2018 to  
330 physicians and hospitals for clinical use. Due to the complex logistics of health screening and

331 quarantine releases, very few FMT preparations are shipped less than 4 months after they are  
332 produced. The median time between production and fulfillment was 8.9 months (Figure 3D).

333  
334 To quantify how different hospitals and physicians used different amounts of the bank's  
335 material, we measured the number of FMT preparations shipped to each recipient in 2018,  
336 regardless of when those preparations were manufactured. In 2018, 12,453 preparations were  
337 shipped to 968 recipients (Figure 4). One recipient received 141 preparations, an average of  
338 11.75 per month, but the median number of preparations was 9, or 0.75 per month. Thus, half of  
339 hospitals and physicians who received material from the bank treated an average of less than 1  
340 patient per month with FMT using that material.

341

## 342 **DISCUSSION**

343 In 2018, the stool bank's protocol was designed principally to improve the safety and  
344 accessibility of FMT for treating *C. difficile* infection in a specific regulatory environment,<sup>37</sup> using  
345 donors from a limited geographic location, and guided by the scientific and medical  
346 understanding of FMT at the time. The protocol described here would require modification if  
347 implemented in a different regulatory environment<sup>23,32</sup> or geography.<sup>47</sup> Furthermore, as the  
348 field's understanding of the safety profile and molecular mechanisms of FMT improves, there  
349 will be further opportunities to optimize human-derived microbial therapies in general and stool  
350 banking protocols in particular.

351

352 We shared these methods to help inform consensus standards with data gathered from real-  
353 world settings, to support the advancement of similar operations, and to invite broader  
354 participation in the improvement of these methods. To help explore the thematic areas in which  
355 stool banking protocols could be improved and adapted, we lay out and discuss five scenarios  
356 about a hypothetical donor's lifecycle.

357

358 **Scenario 1: A healthy donor.**

359 In this scenario, the hypothetical donor passes initial screening and subsequent health checks.

360 Donated stool is used to prepare FMT preparations, which successfully resolve patients' *C.*

361 *difficile* infection. No adverse events related to this donor's material are reported, and the donor

362 eventually leaves the program for their own reasons. Even this scenario presents multiple

363 questions about optimal stool banking protocols.

364

365 First, the stool bank compensates donors \$40 USD to remunerate them for the time and effort

366 associated with making a usable on-site donation. Compensation should be high enough to

367 fairly remunerate donors for their efforts. However, compensation should also avoid perverse

368 incentivization or coercing candidate donors into sharing private health information and human

369 biospecimens. The optimal compensation for stool donors is an open question: while whole

370 blood donors and organ donors in the US are not compensated, plasma donors, sperm donors,

371 and egg donors are.<sup>31,48–52</sup>

372

373 Second, the requirement that donations be passed on-site limits the bank's donor pool to one

374 metropolitan area. Although stool from any donor passing the stool bank's screens appears

375 equally efficacious for treating *C. difficile* infection,<sup>53–56</sup> the same may not hold true for other

376 diseases. For example, it may or may not be important for donors and recipients to be

377 geographically "matched" to ensure maximally safe and effective FMT.<sup>57–59</sup>

378

379 Third, because stool from any donor in the bank's program appears equally efficacious, the

380 stool bank does not direct material from particular donors to particular patients except as part of

381 specific research protocols. However, it may at some point become clear that individual donors

382 ("super donors")<sup>60</sup> or donations with particular characteristics ("superstool")<sup>61</sup> yield more



383 effective FMT preparations for treating *C. difficile* infection or other indications. As the field's  
384 understanding of FMT grows, the universal donor approach may require adjustment.

385

386 Fourth, the active ingredient of human-derived microbial therapeutics like FMT, although  
387 suspected to be live or viable bacteria, is not definitively known,<sup>62</sup> which makes the optimal  
388 manufacturing protocol unclear. Current manufacturing processes, such as aerobic preparation  
389 and freezing FMT preparations, are supported by clinical evidence<sup>63-65</sup> but may require  
390 adjustment as clinical and scientific understanding of FMT grows. Furthermore, a human-  
391 derived therapeutic's active ingredient may not be the same for all theorized indications.<sup>66</sup>

392 Current testing for FMT potency focuses on donations' viable bacterial density,<sup>67</sup> but there is the  
393 possibility that future research into the variability of human stool and the correlation between  
394 those variations and the efficacy of FMT for treating various indications may reveal a more  
395 accurate predictor of FMT potency.<sup>61</sup>

396

397 Fifth, even with rigorous health screenings, human-derived microbial therapeutics present risks  
398 that patients should be counselled on during the informed consent process. Screening  
399 standards used by the bank for FMT material are informed by criteria set forth by regulatory  
400 bodies, blood banks, an independent clinical advisory board, national and international stool  
401 banking consensus guidelines,<sup>5,26,31,35,68</sup> and patient outcomes reported by partner hospitals and  
402 physicians. However, not all known pathogens are screened for, and previously unknown  
403 pathogens or other risk factors can arise in human-derived material.<sup>69</sup> Thus, screening  
404 standards for human-derived microbial therapeutics require continuous re-evaluation and  
405 updating.

406

407 Finally, even if human-derived microbial therapeutic material is screened for a pathogen or  
408 condition, different test modalities may lead to different results. Ideally, a screening assay

409 reliably determines whether a donor’s material carries the minimum infective dose of a  
410 pathogen. In practice, the fact that a donor or their material screens negative for a pathogen on  
411 an available assay does not fully negate the risk that their donated material carries that  
412 pathogen, and patients should be counselled on the risk of acquiring pathogens during the  
413 informed consent process.

414

415 **Scenario 2: A donor fails the initial screen.**

416 In this scenario, the potential donor is excluded during the pre-screen survey, on-site evaluation  
417 by a clinical staff, or laboratory testing. The candidate never provides a stool sample. This  
418 scenario highlights two major areas of ongoing development.

419

420 First, just as blood donation regulations aim to reduce risk “to the lowest level reasonably  
421 achievable without unduly decreasing the availability of [blood]”,<sup>70</sup> so stool donor screening  
422 procedures aim to limit the risk of FMT without unduly restricting access to FMT. However, the  
423 optimal screening battery remains an area of active development, and screening for every  
424 possible pathogen may not be the best approach. For example, given the high prevalence of  
425 prior exposure to Epstein-Barr virus (EBV) and cytomegalovirus (CMV) as well as the lack of  
426 reported patient events related to transmission of these viruses via FMT, international guidelines  
427 do not recommend that donors be excluded based on their exposure to these viruses.<sup>31</sup> Instead,  
428 patients at risk of CMV or EBV infection should therefore be appropriately counselled on the  
429 risks, and alternatives to FMT should be considered. The label on the bank’s shipped material  
430 includes a disclaimer to this effect.

431

432 Second, the optimal screening battery may be different for different patient populations or  
433 geographies. As a hypothetical example, it may become clear that testing for some pathogen or  
434 risk factor is important for FMT safety, but only when used in a certain patient population, such

435 as immunocompromised patients, thus requiring a tailored match between donor screening and  
436 patient population. This tailoring is practiced in blood banks, which provide, for example, CMV-  
437 negative blood to CMV-naïve patients. Similarly, stool banks in different geographies should  
438 determine their screening criteria based on the local burden of disease to design locally  
439 appropriate screening programs.

440

441 **Scenario 3: A donor is permanently excluded from the program.**

442 In this scenario, an active donor contracts an exclusionary infection, such as *C. difficile* or HIV,  
443 or is diagnosed with a disqualifying, potentially microbiome-related condition, such as  
444 hypertension or rheumatoid arthritis, for the first time. The donor is permanently excluded from  
445 donation program, and FMT preparations made from their donations since their last battery of  
446 negative screens are destroyed. The stool bank may also destroy material made before the  
447 previous negative screening.

448

449 Similar to Scenario 2, the optimal procedures for determining criteria for permanent donor  
450 exclusion are an area of active development. While HIV, hepatitis B, and hepatitis C are obvious  
451 criteria for permanent exclusion, the need to permanently exclude donors because of other  
452 infectious diseases or because of potentially microbiome-mediated conditions will continue to be  
453 refined. As the field's understanding of the microbiome's role in disease grows and the potential  
454 risk for transmission of microbiome-mediated diseases becomes more clear, human-derived  
455 microbial therapeutics, including FMT and stool banking procedures, will likely adapt to improve  
456 patient safety.<sup>30,71,72</sup>

457

458 **Scenario 4: A donor is temporarily deferred after contracting an acute infectious disease.**

459 In this scenario, a donor self-reports, tests positive for, or is diagnosed with an acute infection,  
460 such as a viral upper respiratory infection or acute gastrointestinal illness. The donor is

461 temporarily deferred and any material from the current stool collection period is destroyed. The  
462 deferral is maintained at least until the donor is asymptomatic, usual stool patterns have  
463 returned, and the donor passes a partial or complete re-screening, which includes tests for  
464 infectious diseases. Stool bank clinical staff use their clinical judgment to determine if the  
465 deferral should be extended to account for pathogen shedding that can continue after resolution  
466 of symptoms. Although the fecal shedding periods for some pathogens have been studied, there  
467 is no published clinical guidance about the appropriate intervals for stool donor deferrals after  
468 acute infection, making this an aspect of stool banking that requires further discussion and  
469 development.

470

#### 471 **Scenario 5: Patient experiences an adverse event following FMT.**

472 In this scenario, a clinician treating a patient with FMT material from the stool bank under  
473 enforcement discretion reports that the patient experienced an adverse event. Centralized  
474 safety reporting and surveillance may contribute to improved FMT safety through a better  
475 understanding of the risks associated with human-derived microbial therapeutics and  
476 subsequent implementation of improved screening and manufacturing processes, but there are  
477 important areas of active development with respect to FMT safety.

478

479 First, improving methods for collection, integration, and operationalization of safety data for  
480 human-derived microbial therapeutics is an important area of ongoing development. Safety data  
481 about FMT is obtained from three main sources. Clinical trials carefully track adverse events  
482 from a relatively small number of enrolled patients. Registries like the National Pediatric FMT  
483 Registry<sup>73</sup> and the American Gastroenterological Society's FMT National Registry<sup>74</sup>, which aims  
484 to track 4,000 FMT patients for ten years, are critical tools in identifying and informing the  
485 mitigation of any long-term risks of FMT, an area of ongoing clinical interest.<sup>75</sup> Stool banks can  
486 collect large amounts of real-world data<sup>76</sup> that may be more representative of relevant patient

487 populations than data collected from clinical trials,<sup>77</sup> but improved reporting of adverse events to  
488 stool banks remains an important challenge for the field. Data from each of these 3 sources are  
489 valuable and complementary, and they should be used in concert to improve donor screening  
490 and manufacturing protocols for all human-derived microbial therapeutics.

491  
492 Second, assessment of any potential causal relationship between FMT material and a single  
493 reported adverse event is often complicated by the patient's comorbidities. For example,  
494 although several reports describe worsening inflammatory bowel disease flares after FMT, it has  
495 not yet been determined whether or not FMT contributed to those flares: patients may have  
496 experienced those flares even if they had not undergone FMT.<sup>78</sup> Controlled trials and registries  
497 remain key tools to address these questions.

498  
499 Third, in the case of an adverse event caused by an infection, linking pathogens in donated  
500 stool to the infective pathogen in the patient is an area of active development. Whole genome  
501 sequencing has emerged as the leading tool to assess whether FMT transferred a pathogen,<sup>79</sup>  
502 but definitive proof of transmission or non-transmission via human-derived material is not  
503 always possible. In particular, retained stool samples from the donor and the patient are  
504 essential for definitively investigating a possible pathogen transmission but collecting patient  
505 samples, to support comparison with the donor samples retained by stool banks, may not yet be  
506 common practice at most facilities.<sup>25</sup>

507

## 508 **Conclusion**

509 Optimal stool banking methods likely depend on the target patient population, evolving  
510 regulations, and emerging scientific understanding about the microbiome. Here we described  
511 and discussed the stool banking protocol used by a large stool bank in 2018 to illustrate current

512 practice and to highlight areas for potential improvement. We hope this report is a step toward  
513 analyses that can help inform evidence-based stool banking protocols.

514

515

## 516 **DECLARATIONS**

### 517 **Data availability**

518 All data underlying the analyses are available in the Supplemental Material.

519

### 520 **Authors contribution statement**

521 JC and SO conceived the project and performed the analysis. JC, AZ, BR, and SO wrote the  
522 original draft. All authors reviewed and revised the manuscript.

523

### 524 **OpenBiome Team Members**

525 (The “OpenBiome Team” includes current and former OpenBiome employees, members of  
526 OpenBiome’s Board of Directors, and members of OpenBiome’s independent, unpaid Clinical  
527 Advisory Board.) Jessica R. Allegretti, Kanchana Amaratunga, Daniel Blackler, Michael Bougas,  
528 Shrish Budree, Laura Burns, Jessica W. Crothers, Michael Dickens, Jacob Dixon, Nancy  
529 DuBois, Carolyn Edelstein, Michael Edmond, Ryan J. Elliott, Monika Fischer, Dinara  
530 Gabdrakhmanova, Richard Hunt, Stacy Kahn, Daelyn Kauffman, Deberly Kauffman, Colleen  
531 Kelly, Ciaran Kelly, Clara Kerwin, Kelly Ling, Daniel Martin, Gina Mendolia, Rodrigo Munoz,  
532 Kelsey O'Brien, Majdi Osman, Allison Perrotta, Sonny Qazi, Alexandra Scheeler, Monica Seng,  
533 Madeline Sovie, Neil Stollman, Zac Stoltzner, Elaine Vo, Kurt Warren, Karl Yoder, Charles  
534 Young

535

### 536 **Funding**

537 No external funding was received for this work.

538

539 **Conflicts of interest**

540 Dr. Allegretti is a consultant for Finch Therapeutics, Artugen Therapeutics, and Merck & Co.

541 Carolyn Edelstein's spouse is an employee of and owns shares in Finch Therapeutics. Dr.

542 Fischer serves on a Data Safety Monitoring Board for Rebiotix, Inc. Dr. Ramakrishna is a former

543 employee of Finch Therapeutics.

544

545 **Ethics**

546 This study was conducted as part of study protocol 1280272 approved by New England

547 Independent Review Board.

548

549 MedDRA® trademark is registered by IFPMA on behalf of ICH.

550

551 REFERENCES

- 552
- 553 1. Khoruts, A. & Sadowsky, M. J. Understanding the mechanisms of faecal microbiota  
554 transplantation. *Nature Reviews Gastroenterology and Hepatology* (2016)  
555 doi:10.1038/nrgastro.2016.98.
  - 556 2. Allegretti, J. R., Mullish, B. H., Kelly, C. & Fischer, M. The evolution of the use of faecal  
557 microbiota transplantation and emerging therapeutic indications. *Lancet (London,  
558 England)* **394**, 420–431 (2019).
  - 559 3. Davidovics, Z. H. *et al.* Fecal Microbiota Transplantation for Recurrent *Clostridium difficile*  
560 Infection and Other Conditions in Children. *J. Pediatr. Gastroenterol. Nutr.* **68**, 130–143  
561 (2019).
  - 562 4. McDonald, L. C. *et al.* Clinical Practice Guidelines for *Clostridium difficile* Infection in  
563 Adults and Children: 2017 Update by the Infectious Diseases Society of America (IDSA)  
564 and Society for Healthcare Epidemiology of America (SHEA). *Clin. Infect. Dis.* **66**, e1–e48  
565 (2018).
  - 566 5. Mullish, B. H. *et al.* The use of faecal microbiota transplant as treatment for recurrent or  
567 refractory *Clostridium difficile* infection and other potential indications: joint British Society  
568 of Gastroenterology (BSG) and Healthcare Infection Society (HIS) guidelines. *Gut* **67**,  
569 1920–1941 (2018).
  - 570 6. Surawicz, C. M. *et al.* Guidelines for Diagnosis, Treatment, and Prevention of *Clostridium*  
571 *difficile* Infections. *Am. J. Gastroenterol.* **108**, 478–498 (2013).
  - 572 7. Debast, S. B., Bauer, M. P. & Kuijper, E. J. European Society of Clinical Microbiology and  
573 Infectious Diseases: Update of the Treatment Guidance Document for *Clostridium difficile*  
574 Infection. *Clin. Microbiol. Infect.* **20**, 1–26 (2014).
  - 575 8. US Centers for Disease Control and Prevention. *Antibiotic resistance threats in the*  
576 *United States, 2019.* (2019).
  - 577 9. Guh, A. Y. *et al.* Trends in U.S. Burden of *Clostridioides difficile* Infection and Outcomes.  
578 *N. Engl. J. Med.* **382**, 1320–1330 (2020).
  - 579 10. Cammarota, G. *et al.* Randomised clinical trial: Faecal microbiota transplantation by  
580 colonoscopy vs. vancomycin for the treatment of recurrent *Clostridium difficile* infection.  
581 *Aliment. Pharmacol. Ther.* (2015) doi:10.1111/apt.13144.
  - 582 11. Hirsch, B. E. *et al.* Effectiveness of fecal-derived microbiota transfer using orally  
583 administered capsules for recurrent *Clostridium difficile* infection. *BMC Infect. Dis.* (2015)  
584 doi:10.1186/s12879-015-0930-z.
  - 585 12. Kao, D. *et al.* Effect of oral capsule– vs colonoscopy-delivered fecal microbiota  
586 transplantation on recurrent *Clostridium difficile* infection: A randomized clinical trial.  
587 *JAMA - J. Am. Med. Assoc.* (2017) doi:10.1001/jama.2017.17077.
  - 588 13. van Nood, E. *et al.* Duodenal infusion of donor feces for recurrent *Clostridium difficile*. *N.*  
589 *Engl. J. Med.* (2013) doi:10.1056/NEJMoa1205037.
  - 590 14. Youngster, I. *et al.* Oral, frozen fecal microbiota transplant (FMT) capsules for recurrent  
591 *Clostridium difficile* infection. *BMC Med.* (2016) doi:10.1186/s12916-016-0680-9.
  - 592 15. Youngster, I. *et al.* Oral, Capsulized, Frozen Fecal Microbiota Transplantation for  
593 Relapsing *Clostridium difficile* Infection. *JAMA - J. Am. Med. Assoc.* (2014)  
594 doi:10.1001/jama.2014.13875.
  - 595 16. Youngster, I. *et al.* Fecal microbiota transplant for relapsing *clostridium difficile* infection  
596 using a frozen inoculum from unrelated donors: A randomized, open-label, controlled pilot  
597 study. *Clin. Infect. Dis.* (2014) doi:10.1093/cid/ciu135.
  - 598 17. Allegretti, J. R. *et al.* Su1738 Fecal Microbiota Transplantation Delivered via Oral  
599 Capsules Achieves Microbial Engraftment Similar to Traditional Delivery Modalities:  
600 Safety, Efficacy and Engraftment Results From a Multi-Center Cluster Randomized Dose-  
601 Finding Study. *Gastroenterology* (2016) doi:10.1016/S0016-5085(16)31855-8.



- 602 18. Kelly, C. R. *et al.* Effect of fecal microbiota transplantation on recurrence in multiply  
603 recurrent clostridium difficile infection a randomized trial. *Ann. Intern. Med.* (2016)  
604 doi:10.7326/M16-0271.
- 605 19. Olesen, S. W., Panchal, P., Chen, J., Budree, S. & Osman, M. Global disparities in faecal  
606 microbiota transplantation research. *Lancet Gastroenterol. Hepatol.* **5**, 241 (2020).
- 607 20. Costello, S. P., Tucker, E. C., La Brooy, J., Schoeman, M. N. & Andrews, J. M.  
608 Establishing a Fecal Microbiota Transplant Service for the Treatment of Clostridium  
609 difficile Infection. *Clin. Infect. Dis.* **62**, 908–914 (2016).
- 610 21. Terveer, E. M. *et al.* How to: Establish and run a stool bank. *Clinical Microbiology and*  
611 *Infection* (2017) doi:10.1016/j.cmi.2017.05.015.
- 612 22. Panchal, P. *et al.* Scaling Safe Access to Fecal Microbiota Transplantation: Past,  
613 Present, and Future. *Curr. Gastroenterol. Rep.* **20**, 14 (2018).
- 614 23. McCune, V. L. *et al.* Results from the first English stool bank using faecal microbiota  
615 transplant as a medicinal product for the treatment of Clostridioides difficile infection.  
616 *EClinicalMedicine* **20**, 100301 (2020).
- 617 24. Smith, M. B. *et al.* The International Public Stool Bank: A Scalable Model for  
618 Standardized Screening and Processing of Donor Stool for Fecal Microbiota  
619 Transplantation. *Gastroenterology* **148**, S-211 (2015).
- 620 25. Kraggsnaes, M. S. *et al.* How do I establish a stool bank for fecal microbiota  
621 transplantation within the blood- and tissue transplant service? *Transfusion* **60**, 1135–  
622 1141 (2020).
- 623 26. Bakken, J. S., Polgreen, P. M., Beekmann, S. E., Riedo, F. X. & Streit, J. A. Treatment  
624 approaches including fecal microbiota transplantation for recurrent Clostridium difficile  
625 infection (RCDI) among infectious disease physicians. *Anaerobe* (2013)  
626 doi:10.1016/j.anaerobe.2013.08.007.
- 627 27. Kim, K. O., Schwartz, M. A., Lin, O. S. T., Chiorean, M. V. & Gluck, M. Reducing Cost  
628 and Complexity of Fecal Microbiota Transplantation Using Universal Donors for  
629 Recurrent Clostridium difficile Infection. *Adv. Ther.* (2019) doi:10.1007/s12325-019-  
630 00974-x.
- 631 28. Kim, K. O. & Gluck, M. Fecal microbiota transplantation: An update on clinical practice.  
632 *Clinical Endoscopy* (2019) doi:10.5946/CE.2019.009.
- 633 29. Ekekezie, C. *et al.* Understanding the Scope of Do-It-Yourself (DIY) Fecal Microbiota  
634 Transplant (FMT). *Am. J. Gastroenterol.* **113**, S102 (2018).
- 635 30. Kassam, Z. *et al.* Donor screening for fecal microbiota transplantation. *New England*  
636 *Journal of Medicine* vol. 381 2070–2072 (2019).
- 637 31. Cammarota, G. *et al.* International consensus conference on stool banking for faecal  
638 microbiota transplantation in clinical practice. *Gut* **68**, 2111–2121 (2019).
- 639 32. Scheeler, A. Where Stool is a Drug: International Approaches to Regulating the use of  
640 Fecal Microbiota for Transplantation. *J. Law, Med. Ethics* **47**, 524–540 (2019).
- 641 33. Jørgensen, S. M. D. *et al.* Recruitment of feces donors among blood donors: Results  
642 from an observational cohort study. *Gut Microbes* (2018)  
643 doi:10.1080/19490976.2018.1458179.
- 644 34. Haifer, C. *et al.* Australian consensus statements for the regulation, production and use of  
645 faecal microbiota transplantation in clinical practice. *Gut* **69**, 801–810 (2020).
- 646 35. Cammarota, G. *et al.* European consensus conference on faecal microbiota  
647 transplantation in clinical practice. in *Gut* (2017). doi:10.1136/gutjnl-2016-313017.
- 648 36. Woodworth, M. H. *et al.* Laboratory Testing of Donors and Stool Samples for Fecal  
649 Microbiota Transplantation for Recurrent Clostridium difficile Infection. *J. Clin. Microbiol.*  
650 **55**, 1002–1010 (2017).
- 651 37. United States Food and Drug Administration. *Guidance for Industry: Enforcement Policy*  
652 *Regarding Investigational New Drug Requirements for Use of Fecal Microbiota for*

- 653 *Transplantation to Treat Clostridium difficile Infection Not Responsive to Standard*  
654 *Therapies*. (2013).
- 655 38. US Food and Drug Administration. *Current Good Manufacturing Practice for Phase 1*  
656 *Investigational Drugs*. [https://www.fda.gov/regulatory-information/search-fda-guidance-](https://www.fda.gov/regulatory-information/search-fda-guidance-documents/current-good-manufacturing-practice-phase-1-investigational-drugs)  
657 [documents/current-good-manufacturing-practice-phase-1-investigational-drugs](https://www.fda.gov/regulatory-information/search-fda-guidance-documents/current-good-manufacturing-practice-phase-1-investigational-drugs) (2008).
- 658 39. Tangden, T., Cars, O., Melhus, A. & Lowdin, E. Foreign Travel Is a Major Risk Factor for  
659 Colonization with Escherichia coli Producing CTX-M-Type Extended-Spectrum -  
660 Lactamases: a Prospective Study with Swedish Volunteers. *Antimicrob. Agents*  
661 *Chemother.* **54**, 3564–3568 (2010).
- 662 40. Paramsothy, S. *et al.* Gastroenterologist perceptions of faecal microbiota transplantation.  
663 *World J. Gastroenterol.* **21**, 10907–14 (2015).
- 664 41. Bakken, J. S. *et al.* Treating Clostridium difficile infection with fecal microbiota  
665 transplantation. *Clin. Gastroenterol. Hepatol. Off. Clin. Pract. J. Am. Gastroenterol.*  
666 *Assoc.* **9**, 1044–1049 (2011).
- 667 42. Chu, N. D., Smith, M. B., Perrotta, A. R., Kassam, Z. & Alm, E. J. Profiling living bacteria  
668 informs preparation of fecal microbiota transplantations. *PLoS One* (2017)  
669 doi:10.1371/journal.pone.0170922.
- 670 43. Stollman, N. *et al.* Frozen Encapsulated Stool in Recurrent Clostridium difficile: Exploring  
671 the Role of Pills in the Treatment Hierarchy of Fecal Microbiota Transplant  
672 Nonresponders. *Am. J. Gastroenterol.* **110**, 600–601 (2015).
- 673 44. Kazerouni, A., Burgess, J., Burns, L. J. & Wein, L. M. Optimal screening and donor  
674 management in a public stool bank. *Microbiome* (2015) doi:10.1186/s40168-015-0140-3.
- 675 45. CDC. Laboratory Testing for the Diagnosis of HIV Infection Updated Recommendations.  
676 1–68 (2014) doi:10.15620/cdc.23447.
- 677 46. Craige, V. MedWatch: The FDA Safety Information and Adverse Event Reporting  
678 Program. *J. Med. Libr. Assoc.* **95**, 224–225 (2007).
- 679 47. Paramsothy, S. *et al.* Donor Recruitment for Fecal Microbiota Transplantation. *Inflamm.*  
680 *Bowel Dis.* **21**, 1600–1606 (2015).
- 681 48. Farrugia, A., Penrod, J. & Bult, J. M. The Ethics of Paid Plasma Donation: A Plea for  
682 Patient Centeredness. *HEC Forum* (2015) doi:10.1007/s10730-014-9253-5.
- 683 49. Glauser, W. Payment for plasma raises ethical issues. *CMAJ* = *Canadian Medical*  
684 *Association journal = journal de l'Association medicale canadienne* (2014)  
685 doi:10.1503/cmaj.109-4855.
- 686 50. *National Organ Transplant Act of 1984*.
- 687 51. Rodriguez del Pozo, P. Paying donors and the ethics of blood supply. *J. Med. Ethics*  
688 (2008) doi:10.1136/jme.20.1.31.
- 689 52. American Association of Blood Banks. Blood Donation FAQs - Donate Blood. (2019).
- 690 53. Budree, S. *et al.* The Association of Stool Donor Diet on Microbial Profile and Clinical  
691 Outcomes of Fecal Microbiota Transplantation in Clostridium Difficile Infection.  
692 *Gastroenterology* **152**, S630–S631 (2017).
- 693 54. Budree, S. *et al.* Do Specific Bacteria Drive Clinical Cure in Fecal Microbiota  
694 Transplantation for Clostridium Difficile Infection?: Clinical, Microbial and Metabolomic  
695 Characterization of Universal FMT Donors. *Gastroenterology* **152**, S349 (2017).
- 696 55. Budree, S. *et al.* 618. Do Clinical Factors Affect Microbial Engraftment After Fecal  
697 Microbiota Transplantation in Recurrent Clostridium difficile Infection? . *Open Forum*  
698 *Infect. Dis.* (2018) doi:10.1093/ofid/ofy210.625.
- 699 56. Osman, M., Abend, A., Panchal, P., Kassam, Z. & Budree, S. Does the Donor Matter?  
700 Microbiome Sequencing to Evaluate Lower Donor Efficacy in Fecal Microbiota  
701 Transplantation for Recurrent Clostridium Difficile Infection. *Gastroenterology* **154**, S-25-  
702 S-26 (2018).
- 703 57. Gaulke, C. A. & Sharpton, T. J. The influence of ethnicity and geography on human gut

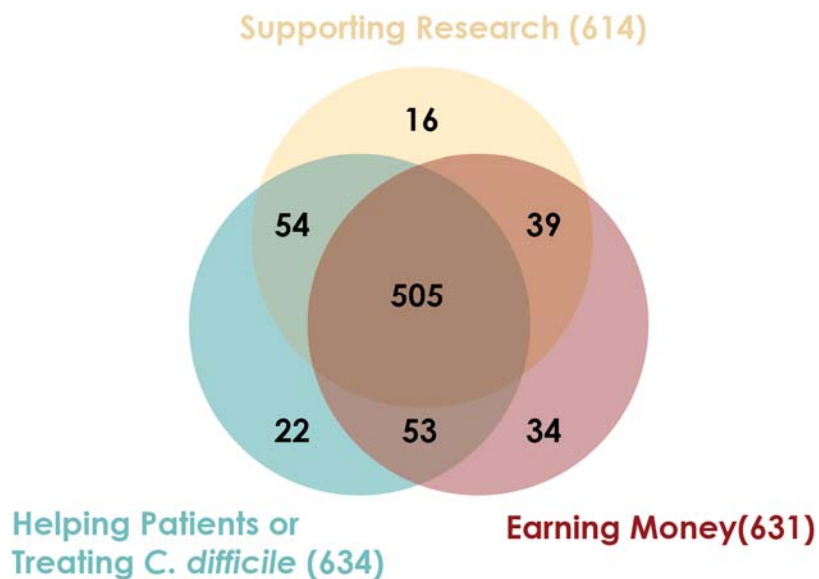
- 704 microbiome composition. *Nature Medicine* (2018) doi:10.1038/s41591-018-0210-8.
- 705 58. Pasolli, E. *et al.* Extensive Unexplored Human Microbiome Diversity Revealed by Over  
706 150,000 Genomes from Metagenomes Spanning Age, Geography, and Lifestyle. *Cell*  
707 (2019) doi:10.1016/j.cell.2019.01.001.
- 708 59. Yatsunenکو, T. *et al.* Human gut microbiome viewed across age and geography. *Nature*  
709 (2012) doi:10.1038/nature11053.
- 710 60. Wilson, B. C., Vatanen, T., Cutfield, W. S. & O'Sullivan, J. M. The Super-Donor  
711 Phenomenon in Fecal Microbiota Transplantation. *Front. Cell. Infect. Microbiol.* (2019)  
712 doi:10.3389/fcimb.2019.00002.
- 713 61. Olesen, S. W., Gurry, T. & Alm, E. J. Designing fecal microbiota transplant trials that  
714 account for differences in donor stool efficacy. *Stat. Methods Med. Res.* (2018)  
715 doi:10.1177/0962280216688502.
- 716 62. Ott, S. J. *et al.* Efficacy of Sterile Fecal Filtrate Transfer for Treating Patients With  
717 *Clostridium difficile* Infection. *Gastroenterology* (2017) doi:10.1053/j.gastro.2016.11.010.
- 718 63. Allegretti, J. R. *et al.* Stool processing speed and storage duration do not impact the  
719 clinical effectiveness of fecal microbiota transplantation. *Gut Microbes* **11**, 1806–1808  
720 (2020).
- 721 64. Mendolia, G. M. *et al.* P1036 - ANAEROBIC VERSUS AEROBICALLY PREPARED  
722 FECAL MICROBIOTA TRANSPLANTATION CAPSULES: A PILOT COMPARATIVE  
723 COHORT ANALYSIS USING A NOVEL SEQUENCING APPROACH. *ACG Annu. Sci.*  
724 *Meet. Abstr.* (2019).
- 725 65. Lee, C. H. *et al.* Frozen vs Fresh Fecal Microbiota Transplantation and Clinical  
726 Resolution of Diarrhea in Patients With Recurrent *Clostridium difficile* Infection. *JAMA*  
727 **315**, 142 (2016).
- 728 66. Olesen, S. W., Leier, M. M., Alm, E. J. & Kahn, S. A. Searching for superstool:  
729 Maximizing the therapeutic potential of FMT. *Nature Reviews Gastroenterology and*  
730 *Hepatology* (2018) doi:10.1038/s41575-018-0019-4.
- 731 67. Carlson, P. E. Regulatory Considerations for Fecal Microbiota Transplantation Products.  
732 *Cell Host Microbe* **27**, 173–175 (2020).
- 733 68. United States Food and Drug Administration. Guidance for Industry Guidance for  
734 Industry. *Fed. Regist.* **505**, 79 (2004).
- 735 69. Ianiro, G. *et al.* Screening of faecal microbiota transplant donors during the COVID-19  
736 outbreak: suggestions for urgent updates from an international expert panel. *The Lancet*  
737 *Gastroenterology and Hepatology* (2020) doi:10.1016/S2468-1253(20)30082-0.
- 738 70. United States Food and Drug Administration. Blood & Blood Products. (2019).
- 739 71. Bibbò, S., Ianiro, G., Gasbarrini, A. & Cammarota, G. Fecal microbiota transplantation:  
740 Past, present and future perspectives. *Minerva Gastroenterologica e Dietologica* (2017)  
741 doi:10.23736/S1121-421X.17.02374-1.
- 742 72. Giles, E. M., D'Adamo, G. L. & Forster, S. C. The future of faecal transplants. *Nat. Rev.*  
743 *Microbiol.* (2019) doi:10.1038/s41579-019-0271-9.
- 744 73. Nicholson, M. R. *et al.* Efficacy of Fecal Microbiota Transplantation for *Clostridium difficile*  
745 Infection in Children. *Clin. Gastroenterol. Hepatol.* **18**, 612-619.e1 (2020).
- 746 74. Kelly, C. R., Kim, A. M., Laine, L. & Wu, G. D. The AGA's Fecal Microbiota  
747 Transplantation National Registry: An Important Step Toward Understanding Risks and  
748 Benefits of Microbiota Therapeutics. *Gastroenterology* (2017)  
749 doi:10.1053/j.gastro.2017.01.028.
- 750 75. Agrawal, M. *et al.* The long-term efficacy and safety of fecal microbiota transplant for  
751 recurrent, severe, and complicated *Clostridium difficile* infection in 146 elderly individuals.  
752 *J. Clin. Gastroenterol.* **50**, 403–407 (2016).
- 753 76. Osman, M. *et al.* Safety and Efficacy of Fecal Microbiota Transplantation for Recurrent  
754 *Clostridium difficile* Infection From An International Public Stool Bank: Results From a

- 755 2050-Patient Multicenter Cohort. *Open Forum Infect. Dis.* **3**, (2016).  
756 77. Kelly, C. R., Fischer, M., Grinspan, A. & Allegretti, J. R. Patients Eligible for Trials of  
757 Microbe-Based Therapeutics Do Not Represent the Population With Recurrent  
758 *Clostridioides difficile* Infection. *Clin. Gastroenterol. Hepatol.* (2019)  
759 doi:10.1016/j.cgh.2019.06.034.  
760 78. Qazi, T. *et al.* The risk of inflammatory bowel disease flares after fecal microbiota  
761 transplantation: Systematic review and meta-analysis. *Gut Microbes* (2017)  
762 doi:10.1080/19490976.2017.1353848.  
763 79. DeFilipp, Z. *et al.* Drug-Resistant *E. coli* Bacteremia Transmitted by Fecal Microbiota  
764 Transplant. *N. Engl. J. Med.* **381**, 2043–2050 (2019).  
765  
766  
767

768 **FIGURES AND FIGURE LEGENDS**

769

770



771

772

773

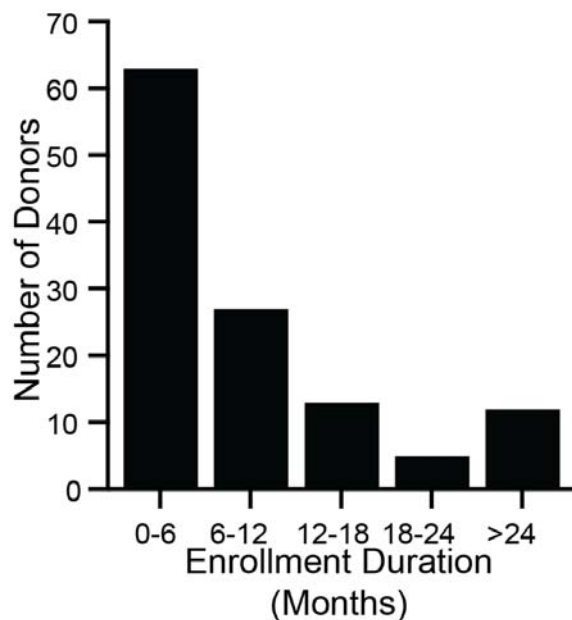
774

775

776

**Figure 1: Stool donors have multiple motivations for providing stool**

Between March 2018 and July 2018, 731 candidate stool donors completed a survey asking their motivations for donating stool. The survey instructed candidates to indicate all motivating factors that applied to them.

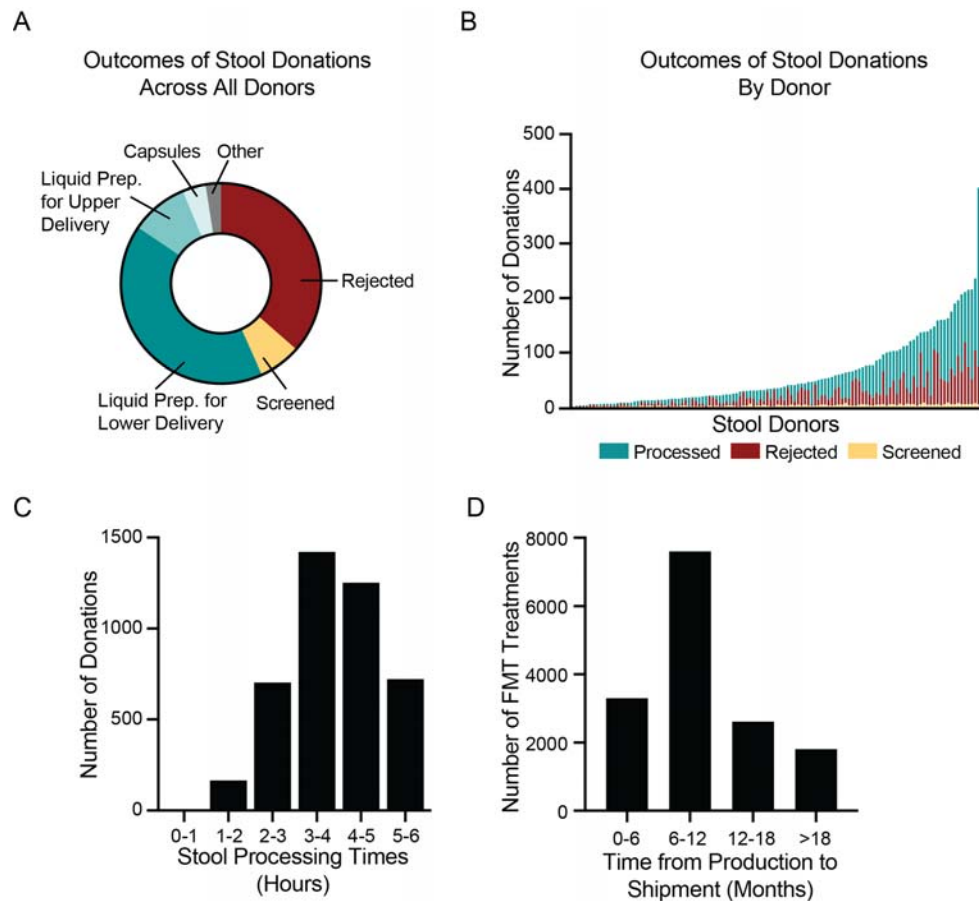


777  
778

779 **Figure 2: Stool donors are active over a wide range of time**

780 During 2018, 120 donors made at least 1 donation that was processed into an FMT preparation.  
781 For each of those donors, enrollment duration was calculated as the time between a donor's  
782 first donation (which may have taken place before 2018) and their last donation in 2018. The  
783 minimum enrollment duration was 21 days, and the maximum was 3.4 years. The median  
784 enrollment duration was 5.8 months (interquartile range 3.2 months to 12.1 months).





785  
786  
787  
788  
789  
790  
791  
792  
793  
794  
795  
796  
797  
798  
799  
800  
801  
802  
803  
804  
805  
806  
807  
808  
809

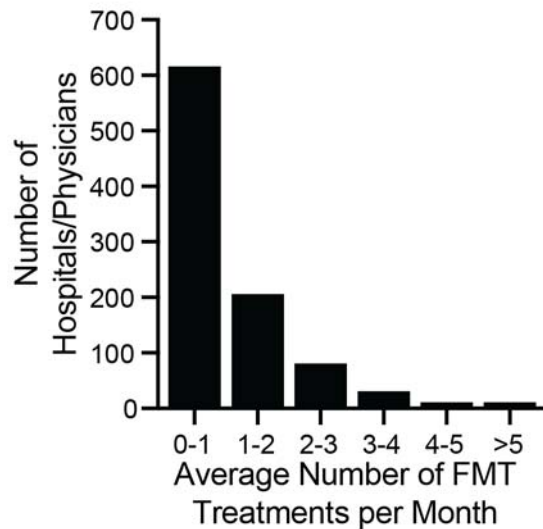
**Figure 3: Donated stool is inspected for quality, processed into FMT treatments, and shipped to hospitals and physicians**

(A) In 2018, the bank received 7,536 donations. 2,749 donations (36%) were rejected, due to visual detection of potentially pathological morphology, low weights, or failure to process the stool within six hours of passage. 516 donations (7%) were used for screening purposes to assess the health of donors. Of the remaining 4,271 donations (57%), 3,099 were processed into lower-delivery liquid preparations (e.g., for colonoscopy), 701 into upper-delivery liquid preparations (e.g., for nasoenteric delivery), 285 into capsule preparations, and 186 into other preparations.

(B) During 2018, 120 stool donors provided at least 1 stool donation that was processed into an FMT preparation. Donors varied in the number of donations as well as proportion of donations that were processed, rejected, and screened. The most productive donor made 402 donations in 2018.

(C) In 2018, the bank processed 4,271 stool donations into FMT preparations. All donations were processed within six hours of passage. The fastest time to processing was 47 minutes. The longest time was 5.99 hours. The median processing time was 3.9 hours (interquartile range 3.2 to 4.7 hours).

(D) By 1 July 2020, the bank had shipped 15,323 of the FMT preparations produced in 2018. Preparations were shipped between 2.2 and 28 months after production. The median time to shipment was 8.9 months (interquartile range 6.3 to 13.3 months). Because not all material produced in 2018 had been shipped as of 1 July 2020, the data are skewed towards earlier shipment.



810  
811 **Figure 4: Monthly volume of preparations by physician/hospital during 2018.**  
812 The number of preparations per month was computed by dividing the total number of shipped  
813 units by 12. The median number of ordered preparations across physicians/hospitals was 9 per  
814 year, or 0.75 treatments per month (interquartile range 0.25 months to 1.4 months). The  
815 maximum number of preparations ordered was 11.75 per month. The majority of  
816 physicians/hospitals ordered an average of less than 1 FMT preparation per month.



817 **Table 1:** Donor evaluation, including clinical assessment and laboratory screenings, used by the  
818 bank in 2018. This list does not reflect the bank's current screening.\*  
819

<b>Clinical Assessment</b>
<b>Infectious risk factors</b>
Known HIV or viral hepatitis exposures
High risk sexual behaviors
Tattoo or body piercing within previous 6 months
Known history of infectious disease
Travel history to endemic regions with a high risk acquiring infectious pathogens
Risk factors for multi-drug resistant organisms (MDROs) including work in clinical environment or long-term care facility, recent hospitalization, or recent discharge from a long term care facility
<b>Potentially microbiome-mediated conditions and factors</b>
Gastrointestinal conditions (e.g., history of inflammatory bowel disease, irritable bowel syndrome, chronic constipation, chronic diarrhea, celiac disease)
Atopic conditions (e.g., asthma, atopic dermatitis, eosinophilic disorders of the gastrointestinal tract)
Autoimmune conditions
Chronic pain syndromes
Metabolic conditions (i.e., clinician assessment of height, weight, and waist circumference)
Neurological conditions
Psychiatric conditions
Malignancy history
Surgeries / Other medical history
Current symptoms
Medications including antibiotics, antifungals, antivirals, and immunosuppressants
Diet
Family history (e.g., family history of inflammatory bowel disease or colon cancer)
<b>Laboratory Testing</b>
<b>Serological Testing</b>
Complete blood count with differential
Hepatic function panel (AST, ALT, ALP, bilirubin, albumin)
HIV-1/2 antigen and antibodies (fourth-generation test)
Hepatitis A (IgM)
Hepatitis B panel (HBsAg, HBsAb, HBcAb)
Hepatitis C (antibody)
<i>Treponema pallidum</i> (cascade with reflex to RPR)
Human T-lymphotropic virus I and II (antibody)
<i>Strongyloides</i> (IgG)
<b>Stool Testing</b>
<i>Clostridioides difficile</i> toxin B (PCR)
Enteric pathogens including <i>Salmonella</i> , <i>Shigella</i> , <i>Campylobacter</i> , and <i>Vibrio</i> (culture)
Shiga toxin (EIA, with reflex to <i>E. coli</i> O157 culture) <sup>†</sup>
<i>Helicobacter pylori</i> (EIA)
Ova and parasites
<i>Giardia lamblia</i> (EIA and microscopy)
<i>Cryptosporidium</i> (EIA)

<i>Cyclospora</i> and <i>Isospora</i> (microscopy)
<i>Microsporidia</i> (microscopy)
Rotavirus (EIA)
Norovirus (real-time PCR)
Adenovirus (EIA)
Vancomycin-resistant <i>Enterococcus</i> (culture)
Extended spectrum beta-lactamase producing Enterobacteriaceae (culture)
Carbapenem-resistant Enterobacteriaceae (culture)
<b>Nasal Swab Culture</b>
Methicillin-resistant <i>Staphylococcus aureus</i> (culture)

820  
821 AST: aspartate transaminase. ALT: alanine transaminase. ALP: alkaline phosphatase. HBsAg:  
822 hepatitis B surface antigen. HBsAb: hepatitis B surface antibody. HBcAb: hepatitis B core  
823 antibody. RPR: rapid plasma reagin. EIA: enzyme immunoassay. PCR: polymerase chain  
824 reaction. \* Screening for SARS-CoV-2 via nasopharyngeal swab PCR was implemented in  
825 March 2020, but material donated from December 2019 and onward remains in quarantine  
826 pending regulatory review. † EIA for Shiga toxin was replaced by *stx1/2* PCR in March 2020.  
827