

1 **Research Article**

2 **Title:** Treatment with an Anti-CK2 Synthetic Peptide Improves Clinical Response in
3 Covid-19 Patients with Pneumonia. A Randomized and Controlled Clinical Trial

4 **Authors:** Leticia R. Cruz^{1*}, Idania Baladrón^{2*}, Aliusha Rittoles¹, Pablo A. Díaz², Carmen
5 Valenzuela³, Raúl Santana¹, Maria M. Vázquez², Ariadna García¹, Deyli Chacón¹, Delvin
6 Thompson¹, Gustavo Perera¹, Ariel González⁴, Rafael Reyes⁵, Loida Torres⁴, Jesus
7 Pérez¹, Dania M. Vázquez², Gilda Lemus², Mauro Rosales^{2,6}, Ailyn C. Ramón², George
8 V. Perez², Gerardo Guillén², Verena Muzio², Yasser Perera^{2,7}, and Silvio E. Perea² for the
9 ATENEA-Co-300 group♣

10 * These authors contributed equally to this work

11 **Affiliations:**

- 12 1. Central Hospital “Luis Diaz Soto”, Havana 19130, Cuba
- 13 2. Center for Genetic Engineering and Biotechnology, Havana 10600, Cuba
- 14 3. Center for Molecular Immunology, Havana 11600, Cuba
- 15 4. International Center of Health “La Pradera”, Havana 11600, Cuba
- 16 5. National Institute of Oncology and Radiobiology, Havana 10400, Cuba
- 17 6. Faculty of Biology, University of Havana, Havana 10400, Cuba
- 18 7. China-Cuba Biotechnology Joint Innovation Center (CCBJIC), Yongzhou Zhong Gu
19 Biotechnology Co., Ltd, Yangjiaqiao Street, Lengshuitan District, Yongzhou City, Hunan
20 425000, China

21 **Corresponding Author:**

22 Silvio E. Perea, PhD, Prof (silvio.perea@cigb.edu.cu)
23 Head of the Molecular Oncology Group
24 Biomedical Research Area
25 Center for Genetic Engineering and Biotechnology
26 Havana 10600, Cuba

27 **Number of Figures:** 2

28 **Number of Tables:** 5

29 **Keywords:** Covid-19, Coronavirus infection, SARS-Cov2, Protein Kinase CK2, CIGB-325

30 **Abstract**

31 **Background:** The recently discovered instrumental role of CK2 in the SARS-Cov2
32 infection has pointed out this protein kinase as a promising therapeutic target in Covid-19
33 disease. Accordingly, anti-SARS-Cov2 activity has been reported by CK2 inhibitors *in*
34 *vitro*, however any anti-CK2 clinical approach has been assessed in Covid-19 patients so
35 far. Here, we investigated the putative clinical benefit of CIGB-325, an anti-CK2 peptide
36 previously used in cancer patients, which was added to the standard-of-care to treat
37 Covid-19.

38 **Methods:** A monocentric, randomized standard-of-care controlled trial of intravenous
39 CIGB-325 in adults hospitalized with Covid-19. Twenty patients were randomly assigned
40 to receive CIGB-300 (2.5 mg/kg/day during 5-consecutive days) plus standard-of-care
41 (10 patients) or standard-of-care (10 patients). Primary outcomes were time to viral
42 clearance defined as the time (in days) to have nasopharyngeal SARS-Cov2 negative
43 PCR and clinical response. This trial is registered with
44 <https://rpcec.sld.cu/trials/RPCEC00000317-En> (Code: IG/CIGB300I/CV/2001).

45 **Results:** Most of the patients had initial positive by chest-computed tomography (CT).
46 CIGB-325 treatment reduced both number of pulmonary lesions and lesion's extent
47 compared to control group in seven days. Taking into account the Covid-19 chest-CT
48 abnormalities, CIGB-325 was also superior to control as well as in terms of proportion of
49 patients with such clinical benefit. Improvement of clinical status was experienced in
50 50% of patients in the CIGB-325 group and 25% in control. Accordingly, systemic levels
51 of CPK, LDH and CRP were lowered at day 7 by treating with this anti-CK2 peptide.
52 Both therapeutic regimens were similar respect to SARS-Cov2 clearance in nasopharynx
53 swabs over the time.

54 **Conclusion:** Our study revealed that consecutive-5 day regimen of intravenous CIGB-
55 325 at 2.5 mg/kg quickly improved the chest-CT outcomes over standard-of-care. This is
56 the first report describing signs of clinical benefit of an anti-CK2 approach in Covid-19.

57 **Introduction**

58 Severe acute respiratory syndrome coronavirus 2 (SARS-CoV-2) has spread worldwide
59 and has infected nearly 20 million people [1, 2]. Many infected people are asymptomatic
60 or experience mild symptoms and recover without medical intervention [3, 4]. However,
61 older people and those with comorbid hypertension, diabetes, obesity, and heart disease
62 are at higher risk of life-threatening illness [5, 6]. Therefore, development of an effective
63 antiviral drug for COVID-19 is a global health priority. Along with the development of
64 new antiviral drugs, repurposing existing drugs for COVID-19 treatment is also
65 accelerated [7]. Some antiviral drugs have shown high efficacy against SARS-CoV-2
66 both *in vitro* [8] and *in vivo* models [9, 10]. A number of clinical studies such as
67 compassionate use programs and clinical trials have been conducted to test the efficacy of
68 FDA-approved drugs, such as lopinavir and ritonavir, chloroquine, favipiravir, and
69 remdesivir (RDV) [11-14]. However, the results from those clinical studies were often
70 inconsistent and lacking of compelling evidences. More recently, a double-blind,
71 randomized, placebo-controlled trial of intravenous RDV in adults hospitalized with
72 Covid-19 and lower respiratory tract involvement had a median recovery time of 11 days
73 (95% confidence interval [CI], 9 to 12), as compared with 15 days (95% CI, 13 to 19) in
74 those who received placebo (rate ratio for recovery, 1.32; 95% CI, 1.12 to 1.55; P <
75 0.001) [15].

76 At present, the main antiviral strategies currently employed against SARS-CoV-2 can
77 broadly be divided into two types: strategies directly targeting the virus and strategies
78 indirectly targeting the virus via host modulation [16]. In both strategies there are
79 already-approved drugs and experimental candidates in Clinical trials [16]. Likewise,
80 discovery of novel cellular targets for SARS-Cov2 coronavirus has led to novel putative
81 clinical strategies which merit going into clinical research in Covid-19.

82 CK2 is a constitutively active Ser/Thr protein kinase deregulated in cancer and other
83 pathologies, responsible for about the 20% of the human phosphoproteome [17, 18].
84 Considering, both experimental and clinical validation data, CK2 has been regarded as an
85 emerging oncology target [19, 20]. In infectious diseases, CK2 phosphorylates and
86 modulates the function of viral proteins from Hepatitis C Virus (HCV) [21], Vesicular
87 stomatitis virus (VSV) [22], Human Immunodeficiency Virus (HIV) [23], Human

88 Papilloma Virus (HPV) [24], and Herpes simplex-1 (HSV-1) [25]. Furthermore, CK2
89 also regulates a number of signaling cascades such as NF- κ B [26], JAK / STAT [27], and
90 PTEN / PI3K / Akt-PKB [28], that viruses hijacked to guaranteed their propagation.
91 Therefore, it is expected that pharmacological intervention of CK2 may impact on viral
92 replication. Recently, CK2 has been found to be directly targeted by the SARS-Cov2
93 nucleocapsid protein and they both co-localize along the filopodia protrusions that
94 promote virus egress and rapid cell-to-cell spread across epithelial mono-layers of
95 infected cells [29]. Additionally, inhibition of CK2 in those experiments demonstrated
96 the instrumental role of this protein kinase for SARS-Cov2 infection *in vitro* [29].
97 Considering the scientific rationality of inhibiting CK2 in SARS-Cov2 infection and
98 taking advance of CIGB-325 (formerly CIGB-300) as an anti-CK2 synthetic peptide
99 previously already assessed in different Phase I-II in cancer patients, we investigated the
100 putative clinical benefit of this peptide in Covid-19 patients. Particularly, safety and
101 tolerability of intravenous delivery of CIGB-325 has been previously assessed from 0.2
102 to 12.8 mg/kg [30, 31] as well as the consecutive-5 day regimen of administration.
103 In this clinical study we administered intravenous CIGB-325 at 2.5 mg/kg along with
104 standard-of-care for treating SARS-Cov2 positive patients in Cuba which is based on
105 alpha 2b-IFN plus kaletra/hydroxyquinoline. Preliminary data indicated that combination
106 of CIGB-325 with standard-of-care improved chest-CT outcomes in Covid-19 patients
107 with pneumonia at day 7. Other signs of clinical benefit for this therapeutic regimen were
108 also registered in our study. This is the first clinical study where an anti-CK2 approach is
109 investigated in Covid-19 disease.

110 **Methods**

111 **Patients**

112 Twenty patients confirmed as SARS-CoV-2 positive by real-time transcriptase
113 polymerase chain reaction (RT-PCR) were enrolled in an open, monocentric, randomized
114 standard-of-care controlled trial at the “Luis Diaz Soto” Hospital in Havana, Cuba
115 (<https://rpcec.sld.cu/trials/RPCEC00000317-En> (Code: IG/CIGB300I/CV/2001)
116 (ATENEA-Co-300 trial). CIGB-300 code was substituted by CIGB-325 just after online
117 clinical trial registration; therefore, it appears with the former code. The Ethics
118 Committee for Clinical Research in the hospital and Cuban Regulatory Agency
119 (CECMED) approved the trial. The study complied with the Good Clinical Practices and
120 the precepts established in the Declaration of the Helsinki World Medical Association.
121 All patients met the inclusion criteria described in the protocol and signed the informed
122 consent.

123 **Laboratory examination**

124 Laboratory results included blood routine, leucocyte subsets and blood biochemical
125 parameters. Serum levels of CPK, LDH and RCP were determined by a specific Roche
126 system (Roche-cobas-C311).

127 **SARS-Cov2 viral dynamic in nasopharyngeal swabs**

128 Nasopharyngeal swabs were obtained from patients at days 0, 3, 7, and 14. Viral RNA
129 was detected by RT-PCR amplification by using specific SARS-Cov2 primers. Presence
130 of SARS-Cov2 in swabs was followed-up at indicated times and compared among both
131 groups.

132 **Clinical response**

133 Clinical status was classified as asymptomatic, mild, moderate and severe Covid-19
134 disease according to the NIH guide “Coronavirus Disease 2019 (COVID-19) Treatment
135 guidelines”. <https://www.covid19treatmentguidelines.nih.gov>. The chest-CT analysis was
136 performed considering number of pulmonary lesions, lesion’s extent and common Covid-
137 19 typical abnormalities like consolidation, glass-round opacity and mix pattern.

138 **Safety**

139 Pretreatment evaluation included a detailed history and physical examination. In addition,
140 hematological counts, blood chemistry, coagulation, radiography and chest-CT studies

141 were performed. Systemic toxicity was evaluated daily after each CIGB-325
142 administration. Severity of adverse events was classified by the WHO Adverse Reaction
143 Terminology [32]. Causal relationship was classified as very probable (definitive),
144 probable, possible or remote (doubtful) [33].

145 **Statistical Analysis**

146 For chest-CT variables, the analysis was performed in Per Protocol population defined as
147 patients who completed the originally allocated and patients that have TAC at the
148 beginning and at the end of treatment. Continuous variables were expressed as mean and
149 standard deviations or median and interquartile ranges (depending of the assumption of
150 normal distribution). Student-t test or Mann-Whitney U test were applied to continuous
151 variables, and chi-square or Fisher's exact test were used for categorical variables. For
152 the variation in time in each group, Wilcoxon-rank test or Student-t test for dependent
153 variables were used. Type 1 error of 0.05 was specified. Considering the small sample
154 size, the difference between groups (for clinical and chest-CT evaluations, proportion of
155 patients with reduction of score and number of lesions) was estimated from the Bayesian
156 point of view, performing 10,000 simulations and specifying non-informative prior
157 distributions. The analysis was performed using SPSS 25.0 software and EPIDAT 3.1.

158 **Results**

159 **Baseline characteristics of Covid-19 patients**

160 Between June 1, 2020, and June 16, 2020, twenty SARS-Cov2 positive patients
161 underwent randomization in the hospital “Luis Diaz Soto” in Havana, Cuba. Ten were
162 assigned to receive intravenous CIGB-325 + standard-*of-care* (Group I) and 10 to receive
163 standard-*of-care* as control (Group II). To diminish the chance of disease progression, the
164 Cuban Program for managing Covid-19 patients is based on the application of standard-
165 *of-care* immediately upon confirmation of nasopharyngeal SARS-Cov2 diagnosis
166 irrespectively of having symptoms or not. The median number of days between SARS-
167 Cov2 diagnosis, hospitalization and treatment initiation was 2 days. All the patients
168 completed the treatment as planned except one patient from Group I who experienced
169 some concomitant moderate histaminergic adverse events during the first CIGB-325
170 intravenous delivery and dose was decreased to 1.6 mg/kg for remaining days as
171 indicated in the clinical protocol.

172 The mean age of patients was 45.35 years and 70% were male (Table 1). Fourteen
173 patients (70%) were asymptomatic at the enrollment and 9 (45%) at the starting day of
174 treatment. Fifty percent of patients (5/10) had moderate disease and 20% (2/10) were
175 severe in the CIGB-325 group while 40% of patients (4/10) had moderate disease and
176 none severe case at the starting day of treatment (Table 1).

177 Overall, 25% of patients had hypertension, 25% had obesity and none had type 2
178 diabetes. Other comorbidities were anemia (1/20), glaucoma (1/20), hypothyroidism
179 (1/20), cancer (1/20). The most substantial imbalance in baseline characteristics was
180 observed between the CIGB-325 group and control respect to age and coexisting high
181 risk conditions which were more unfavorable in the CIGB-325 group (Table 1).

182 Data from baseline chest-CT analysis showed that 80% of patients in the CIGB-325
183 group had positive chest-CT according to presence of ground-glass opacity,
184 consolidation, mixed pattern and affectation of more than three pulmonary lobules. In the
185 control group, 50% of patients had positive chest-CT with presence of consolidation,
186 mixed pattern and affectation of less than two pulmonary lobules.

187 Concerning hematological and biochemical baseline parameters in all patients, abnormal
188 levels were observed in hemoglobin (25%), platelets (15%), neutrophils (50%),

189 lymphocytes (40%), aspartate aminotransferase (ASAT) (20%), alanine aminotransferase
190 (ALAT)(40%), ferritin (35%), creatinine (20%), and glycemia (30%). Other parameters
191 were in the normal range.

192 **Primary and exploratory efficacy end points**

193 The dynamic conversion from positive to negative of SARS-Cov2 RT-PCR results was
194 analyzed in both groups of treatments at 0, 3, 7, and 14 days. No significant differences
195 were observed in the median time, 11 days \pm 8.0 for CIGB-325 plus standard care and 12
196 days \pm 6 for standard care alone ($p = 0.614$). Thus, time to SARS-Cov2 viral clearance in
197 the nasopharynx swabs behaved similarly for both treatments over the time.

198 The clinical status was classified in categories of asymptomatic, mild, moderate or severe
199 disease and it was followed up until ending treatment and thereafter for both groups. In
200 the intent-*to-treat* population of CIGB-325 group at day 6 there were 2/10 patients that
201 remained asymptomatic since initiation of treatment, 2/10 changed from severe to
202 moderate, 1/10 from moderate to asymptomatic, 1/10 from mild to asymptomatic and
203 4/10 did not change their clinical status during the treatment. Otherwise, in the control
204 6/10 patients remained asymptomatic since initiation of treatment, 1/10 changed from
205 mild to asymptomatic and 3/10 did not change their clinical status during the treatment.

206 Additionally, chest-CT analysis was performed to investigate the effect of CIGB-325
207 over the Covid-19 pulmonary lesions. For that purpose, both number and lesion's extent
208 at day 0 and after treatment (day 7) were compared just in those patients analyzed per
209 protocol (Table 2). Importantly, CIGB-325 treatment significantly reduced the median
210 number of pulmonary lesions from 9.5 ± 10 (day 0) to 5.5 ± 10 (day 7) ($p = 0.042$).
211 Conversely, no substantial change was observed in the control group. Proportion of
212 patients with reduction of pulmonary lesions was higher in the CIGB-325 group
213 compared with control according to the Bayesian analysis ($pDif > 0; 0.951$) (Table 2).

214 The effect over lesion's extent showed in Table 3 including those patients analyzed per
215 protocol indicates that CIGB-325 treatment also reduced the median of lesion's extent
216 after consecutive-5 day regimen although not significantly. Otherwise, any kind of
217 reduction was observed in the control group. Importantly, proportion of patients with
218 reduction of lesion's extent was higher in the CIGB-325 group (4/7) compared with
219 control (1/9) ($pDif > 0; 0.982$) (Bayesian analysis).

220 The overall chest-CT response was also analyzed considering the number of lesions,
221 lesion's extent and the pattern of Covid-19 typical chest-CT abnormalities (Table 4). The
222 analysis per protocol showed that 50% (3/6) of patients in the CIGB-325 group had a
223 favorable overall chest-CT response compared with 28.6% (2/7) in the control ($p_{Dif} > 0$;
224 0.796) (Bayesian analysis). Importantly, any patient had progression in the CIGB-325
225 group and 28.6% (2/7) in the control group did it. Representative images of chest-CT
226 evolution from one CIGB-325 treated patient are shown in Figure 1.

227 High levels of different serum markers like Creatinine Phospho Kinase (CPK), Reactive
228 C-Protein (RCP), and Lactate dehydrogenase (LDH) have been associated to the adverse
229 clinical outcome in Covid-19 patients. Therefore, we also explored the effect of CIGB-
230 325 over these markers as secondary measure of efficacy. Of note, data from Figure 2
231 shows that CIGB-325 treatment significantly reduced the CPK ($p = 0.007$) and LDH ($p =$
232 0.028) serum levels. Also, the RCP values were lowered by CIGB-325 although with no
233 statistical difference.

234 **Safety**

235 Data from safety analysis indicated that intravenous CIGB-325 added to standard-*of-care*
236 did increase both frequency of adverse events and patients with adverse events (Table 5).
237 Particularly, pruritus, flushing and rash were increased by CIGB-325 treatment in the
238 100, 80 and 60 % of patients respectively. As previously observed during CIGB-325
239 intravenous administration, intensity of this kind of adverse events was mild and/or
240 moderate in all of the patients.

241 **Discussion**

242 Protein Kinase CK2 has been recently suggested as a relevant target to combat SARS-
243 Cov2 infection because of its role on the viral particles egress once accumulated in
244 filopodial protrusions possessing budding viral particles [29]. Although anti-SARS-Cov2
245 activity has been demonstrated through *in vitro* models by inhibiting protein kinase CK2,
246 consistent and compelling evidence for effective anti-CK2 drugs from clinical studies is
247 not available at this.

248 CIGB-325 is an anti-CK2 synthetic peptide extensively assessed in cancer patients whose
249 safety, tolerability and efficacy signs have been gathered from Phase I-II trials. This
250 clinical trial investigated the short-term outcomes of intravenous CIGB-325 at 2.5 mg/kg
251 in a consecutive-5 day regimen which was added to standard care used in Covid-19
252 disease in Cuba. Preliminary results suggest a quick clinical benefit with CIGB-325
253 treatment particularly evidenced by the chest-CT data at day 7 post-treatment initiation.
254 Despite the limited sample size and the imbalance of the baseline patient's characteristics
255 unfavorable for the CIGB-325 group, our trial found that this treatment regimen had
256 clinical benefit for Covid-19 patients with lower respiratory tract involvement.
257 Specifically, CIGB-325 treatment fostered reduction of both, the number pulmonary
258 lesions, and lesion's extent at day 7. Likewise, proportion of patients exhibiting this
259 inhibitory effect is superior in the CIGB-325 group compared with standard care. When
260 overall chest-CT response was analyzed by gathering number of lesions, lesion's extent
261 and the pattern of Covid-19 typical abnormalities, 50% of patients in the CIGB-325
262 group had favorable outcome compared with 20% in the standard care. The odds of
263 difference for the CIGB-325 treatment respect standard care were > 0.90 in all the chest-
264 CT data by using a Bayesian model.

265 Considering some specific Covid-19 pulmonary lesions haven been associated to direct
266 SARS-Cov2 infection of pneumocytes [34] along with the instrumental role of CK2
267 during such infection [29], it might be reasonable to think that reduction of lesions can be
268 achieved by an antiviral activity of CIGB-325 *onsite*. In fact, previous preclinical data of
269 CIGB-325 pharmacokinetics and distribution in mice have demonstrated that up to 7.5
270 mg/kg of peptide lung uptake is achieved after intravenous delivery [35].

271 This quick improvement of chest-CT response encouraged by addition of CIGB-325 to
272 standard care could have a great clinical impact in avoiding progression to severity of
273 Covid-19 patients. Additionally, our study shows that standard care based on alpha 2b
274 IFN + kaletra/hydroxychloroquine also reduces pulmonary lesions at day 7 although to a
275 lesser extent. Such effect rather might be by the previously reported anti-SARS-Cov2
276 activity of type I IFNs when administered either by parenteral route or inhaled [36].
277 While the clinical status (in particular SpO2 levels) and concurrent comorbidities of
278 COVID-19 patients largely determine the need for their admittance to Intensive Care
279 Units, several laboratory parameters may facilitate the assessment of disease severity and
280 rational triaging. Among the markers that may be used in risk stratification to predict
281 severe and fatal COVID-19 in hospitalized patients are the high serum levels of CPK
282 [37], CRP [38] and LDH [39]. We found that CIGB-325 treatment decreased
283 significantly the CPK levels compared with standard care which can suggest an early
284 protective effect from tissue damage. High serum CPK levels have been associated to
285 rhabdomyolysis, weakness and heart injury in Covid-19 patients; therefore, these findings
286 also support the clinical benefit of using CIGB-325 in this viral disease. Accordingly,
287 LDH and CRP serum levels which are considered inflammatory markers were also
288 reduced after CIGB-325 treatment although no significantly.

289 Improvement of the clinical status at day 7 also trended to be superior by adding CIGB-
290 325 to the standard care where 50% (4/8) patients experienced change towards a more
291 favorable clinical category. Otherwise, standard care alone improved clinical status in
292 25% (1/4). However, as this analysis takes into account only symptomatic patients in
293 both groups, confirmation of the CIGB-325 effect in larger size population must be of
294 major priority in future studies of this anti-CK2 peptide in Covid-19.

295 The dynamic conversion from positive to negative of SARS-Cov2 RT-PCR at the
296 nasopharyngeal swabs was very similar for both groups of treatments over the time.
297 Addition of CIGB-325 to the standard care did not shorten the time to viral clearance
298 respect to the standard care at least in the regimen tested in our clinical trial. Other
299 protocols with higher frequency of CIGB-325 administration merit to be explored for that
300 purpose in future trials. Nonetheless, the usefulness and feasibility of the viral end point

301 in nasopharyngeal swabs to assess anti-SARS-Cov2 drugs has not been established yet.
302 Instead, clinical endpoints seem to be more informative in the Covid-19 disease [11, 15].
303 The safety profile of CIGB-325 plus standard care was very similar to that observed for
304 CIGB-325 alone in which a predominant pattern of transient histaminergic-like side
305 effects has been observed [30]. However, intensity of the side effects was mild and/or
306 moderate in all the patients and total resolution of them was achieved in no more than one
307 hour after CIGB-325 administration. Thus, our study confirms that combination of
308 intravenous CIGB-325 at 2.5 mg/kg with standard care for Covid-19 is a manageable and
309 safe strategy to treat patients with this infectious disease.
310 All in all, our study gave important clues suggesting a potential quick clinical benefit at
311 day 7 by using our anti-CK2 approach which has not been reported so far in Covid-19.
312 Recently, a clinical trial with RDV has reported clinical benefit in terms of the number of
313 days to recovery of the hospitalized Covid-19 patients with lower respiratory tract
314 involvement in 11 days (95% confidence interval [CI], 9 to 12), [15], however evidences
315 of chest-CT improvement at day 7 were not provided.
316 Finally, integration of our data leads to the speculation that CIGB-325 might prevent
317 COVID-19 getting worse by inducing an antiviral effect in the lungs and preventing
318 damage caused by the virus. This notion merits further verification in future larger
319 clinical trials of CIGB-325 in Covid-19 patients.

320 **Limitations**

321 In this exploratory study with a small sample size, randomization allowed a balance
322 between the groups regarding the allocation of treatments but not regarding the
323 prognostic variables.

324 **Conclusions**

325 Combination of CIGB-325 anti-CK2 peptide with standard-*of*-care based on alpha 2b-
326 IFN/kaletra/hydroxychloroquine was adequately tolerated and superior in improving a
327 quick chest-CT response in Covid-19 patients. On the contrary, SARS-Cov2 dynamics in
328 nasopharyngeal swabs was similar for both groups over the time. Our clinical findings
329 support future studies to continue to improve patient outcomes in Covid-19 by optimizing
330 CIGB-325 regimens and combining with other antiviral agents. This is the first clinical
331 study using an anti-CK2 approach in Covid-19 and our findings suggest that CK2
332 inhibition can be an antiviral strategy with favorable risk-benefit to fight SARS-Cov2
333 infection.

334 **Statements**

335 **Acknowledgements**

336 We thank Rosa Martinez, Manuel Puerto, Daimays González, Yahima de la O Tamayo, Danelis
337 Pérez- Malo, Estela A Deyvis, Yuilyns Morales, Caridad Aguirre, and Yuliet Sinclair for their
338 logistic support at the Luis Diaz Soto Hospital. Also, we thank Elizeth García, José Luis
339 Rodriguez, Grettel Melo, Reinier Hernandez, Marel Alonso, Julio E Baldomero, and Francisco
340 Hernandez from Clinical Department at the CIGB for their great contribution in the clinical trial
341 execution.

342 **Conflict of Interest**

343 The authors declare no conflict of interest.

344 **Appendix**

345 ♣ATENEA-Co-300 group: Idelsis Esquivel, Maura García, Sara M Martínez, Ana G Galarraga,
346 Kenia Gómez, Sidalyn Gutiérrez, Maria E Fuerte, Jane Fernandez, Yose Gamallo, Yanelis
347 Alvarez, Yarelis Amador, Reynier Perez, Lisset Perurena, Daylen Aguilar

348 **References:**

- 349 1. [https://www.who.int/docs/default-source/coronaviruse/situation-reports/20200809-covid-19-](https://www.who.int/docs/default-source/coronaviruse/situation-reports/20200809-covid-19-sitrep-202)
350 [sitrep-202.](https://www.who.int/docs/default-source/coronaviruse/situation-reports/20200809-covid-19-sitrep-202)
- 351 2. [https://coronavirus.jhu.edu/map.html.](https://coronavirus.jhu.edu/map.html)
- 352 3. Cohen, P. A.; Hall, L.; John, J. N.; Rapoport, A. B. In *The early natural history of SARS-CoV-2*
353 *infection: Clinical observations from an urban, ambulatory COVID-19 clinic*, Mayo Clinic
354 Proceedings, 2020; Elsevier: 2020; pp 1124-1126.
- 355 4. Wu, Z.; McGoogan, J., Outbreak in China: Summary of a Report of 72314 Cases from the Chinese
356 Center for Disease Control and Prevention. *JAMA* **2020**, 10.
- 357 5. Wu, J.; Mafham, M.; Mamas, M.; Rashid, M.; Kontopantelis, E.; Deanfield, J.; de Belder, M.;
358 Gale, C. P., Place and underlying cause of death during the COVID19 pandemic: retrospective
359 cohort study of 3.5 million deaths in England and Wales, 2014 to 2020. *medRxiv* **2020**.
- 360 6. Phillips, R. O.; Robert, J.; Abass, K. M.; Thompson, W.; Sarfo, F. S.; Wilson, T.; Sarpong, G.;
361 Gateau, T.; Chauty, A.; Omollo, R., Rifampicin and clarithromycin (extended release) versus
362 rifampicin and streptomycin for limited Buruli ulcer lesions: a randomised, open-label, non-
363 inferiority phase 3 trial. *The Lancet* **2020**.
- 364 7. Pushpakom, S.; Iorio, F.; Eyers, P. A.; Escott, K. J.; Hopper, S.; Wells, A.; Doig, A.; Guilliams,
365 T.; Latimer, J.; McNamee, C., Drug repurposing: progress, challenges and recommendations.
366 *Nature reviews Drug discovery* **2019**, 18, (1), 41-58.
- 367 8. Ohashi, H.; Watashi, K.; Saso, W.; Shionoya, K.; Iwanami, S.; Hirokawa, T.; Shirai, T.; Kanaya,
368 S.; Ito, Y.; Kim, K. S., Multidrug treatment with nelfinavir and cepharanthine against COVID-19.
369 *bioRxiv* **2020**.
- 370 9. Bao, L.; Deng, W.; Gao, H.; Xiao, C.; Liu, J.; Xue, J.; Lv, Q.; Liu, J.; Yu, P.; Xu, Y., Lack of
371 reinfection in rhesus macaques infected with SARS-CoV-2. *bioRxiv* **2020**.
- 372 10. Cao, B.; Wang, Y.; Wen, D.; Liu, W.; Wang, J.; Fan, G.; Ruan, L.; Song, B.; Cai, Y.; Wei, M., A
373 trial of lopinavir–ritonavir in adults hospitalized with severe Covid-19. *New England Journal of*
374 *Medicine* **2020**.
- 375 11. Wang, Y.; Zhang, D.; Du, G.; Du, R.; Zhao, J.; Jin, Y.; Fu, S.; Gao, L.; Cheng, Z.; Lu, Q.,
376 Remdesivir in adults with severe COVID-19: a randomised, double-blind, placebo-controlled,
377 multicentre trial. *The Lancet* **2020**.
- 378 12. Borba, M. G. S.; Val, F. F. A.; Sampaio, V. S.; Alexandre, M. A. A.; Melo, G. C.; Brito, M.;
379 Mourão, M. P. G.; Brito-Sousa, J. D.; Baía-da-Silva, D.; Guerra, M. V. F., Effect of high vs low
380 doses of chloroquine diphosphate as adjunctive therapy for patients hospitalized with severe acute
381 respiratory syndrome coronavirus 2 (SARS-CoV-2) infection: a randomized clinical trial. *JAMA*
382 *network open* **2020**, 3, (4), e208857-e208857.

- 383 13. Cai, Q.; Yang, M.; Liu, D.; Chen, J.; Shu, D.; Xia, J.; Liao, X.; Gu, Y.; Cai, Q.; Yang, Y.,
384 Experimental treatment with favipiravir for COVID-19: an open-label control study. *Engineering*
385 **2020**.
- 386 14. Bauchner, H.; Fontanarosa, P. B., Randomized clinical trials and COVID-19: managing
387 expectations. *Jama* **2020**.
- 388 15. Beigel, J. H.; Tomashek, K. M.; Dodd, L. E.; Mehta, A. K.; Zingman, B. S.; Kalil, A. C.;
389 Hohmann, E.; Chu, H. Y.; Luetkemeyer, A.; Kline, S., Remdesivir for the treatment of Covid-
390 19—preliminary report. *New England Journal of Medicine* **2020**.
- 391 16. Ahidjo, B. A.; Loe, M.; Ng, Y. L.; Mok, C. K.; Chu, J. J. H., Current Perspective of Antiviral
392 Strategies against COVID-19. *ACS Infectious Diseases* **2020**.
- 393 17. Perera, Y.; Ramos, Y.; Padrón, G.; Caballero, E.; Guirola, O.; Caligiuri, L. G.; Lorenzo, N.;
394 Gottardo, F.; Farina, H. G.; Filhol, O., CIGB-300 anti-cancer peptide regulates the protein kinase
395 CK2-dependent phosphoproteome. *Mol Cell Biochem* **2020**.
- 396 18. Chua, M. M.; Ortega, C. E.; Sheikh, A.; Lee, M.; Abdul-Rassoul, H.; Hartshorn, K. L.;
397 Dominguez, I., CK2 in cancer: cellular and biochemical mechanisms and potential therapeutic
398 target. *Pharmaceuticals* **2017**, 10, (1), 18.
- 399 19. Siddiqui-Jain, A.; Drygin, D.; Streiner, N.; Chua, P.; Pierre, F.; O'Brien, S. E.; Bliesath, J.; Omori,
400 M.; Huser, N.; Ho, C., CX-4945, an orally bioavailable selective inhibitor of protein kinase CK2,
401 inhibits prosurvival and angiogenic signaling and exhibits antitumor efficacy. *Cancer research*
402 **2010**, 70, (24), 10288-10298.
- 403 20. Laudet, B.; Barette, C.; Dulery, V.; Renaudet, O.; Dumy, P.; Metz, A.; Prudent, R.; Deshiere, A.;
404 Dideberg, O.; Filhol, O., Structure-based design of small peptide inhibitors of protein kinase CK2
405 subunit interaction. *Biochemical Journal* **2007**, 408, (3), 363-373.
- 406 21. Tellinghuisen, T. L.; Foss, K. L.; Treadaway, J., Regulation of hepatitis C virion production via
407 phosphorylation of the NS5A protein. *PLoS Pathog* **2008**, 4, (3), e1000032.
- 408 22. Gupta, A. K.; Das, T.; Banerjee, A. K., Casein kinase II is the P protein phosphorylating cellular
409 kinase associated with the ribonucleoprotein complex of purified vesicular stomatitis virus.
410 *Journal of general virology* **1995**, 76, (2), 365-372.
- 411 23. Meggio, F.; D'Agostino, D. M.; Ciminale, V.; Chieco-Bianchi, L.; Pinna, L. A., Phosphorylation
412 of HIV-1 Rev protein: implication of protein kinase CK2 and pro-directed kinases. *Biochemical*
413 *and biophysical research communications* **1996**, 226, (2), 547-554.
- 414 24. Firzlaff, J.; Galloway, D.; Eisenman, R.; Lüscher, B., The E7 protein of human papillomavirus
415 type 16 is phosphorylated by casein kinase II. *The New biologist* **1989**, 1, (1), 44-53.
- 416 25. Smith, M. C.; Bayless, A. M.; Goddard, E. T.; Davido, D. J., CK2 inhibitors increase the
417 sensitivity of HSV-1 to interferon- β . *Antiviral research* **2011**, 91, (3), 259-266.
- 418 26. Trembley, J. H.; Wang, G.; Unger, G.; Slaton, J.; Ahmed, K., Protein kinase CK2 in health and
419 disease. *Cellular and molecular life sciences* **2009**, 66, (11-12), 1858-1867.

- 420 27. Zheng, Y., A CK2-dependent mechanism for activation of the JAK-STAT signaling pathway:
421 implications for cancer biology. *Journal of Interferon & Cytokine Research* **2011**, 31, (2), 265-
422 267.
- 423 28. Di Maira, G.; Salvi, M.; Arrigoni, G.; Marin, O.; Sarno, S.; Brustolon, F.; Pinna, L.; Ruzzene, M.,
424 Protein kinase CK2 phosphorylates and upregulates Akt/PKB. *Cell Death & Differentiation* **2005**,
425 12, (6), 668-677.
- 426 29. Bouhaddou, M.; Memon, D.; Meyer, B.; White, K. M.; Rezelj, V. V.; Marrero, M. C.; Polacco, B.
427 J.; Melnyk, J. E.; Ulferts, S.; Kaake, R. M., The global phosphorylation landscape of SARS-CoV-
428 2 infection. *Cell* **2020**, 182, (3), 685-712. e19.
- 429 30. García-Diegues, R.; de la Torre-Santos, A., Phase I Study of CIGB-300 Administered
430 Intravenously in Patients with Relapsed/Refractory Solid Tumors. *ARCHIVOS DE MEDICINA*
431 **2018**, 1, (1), 4.
- 432 31. Fernández Águila, J. D.; García Vega, Y.; Ríos Jiménez, R. O.; López Sacerio, A.; Rodríguez
433 Rodríguez, C. R.; Rodríguez Fraga, Y.; Valenzuela Silva, C., Safety of intravenous application of
434 cigb-300 in patients with hematological malignancies. EHPMA study. *Revista Cubana de*
435 *Hematología, Inmunología y Hemoterapia* **2016**, 32, (2), 236-248.
- 436 32. https://ctep.cancer.gov/protocoldevelopment/electronic_applications/ctc.htm#ctc_40.
- 437 33. <https://www.who-umc.org/whodrug/whodrug-portfolio>.
- 438 34. Carsana, L.; Sonzogni, A.; Nasr, A.; Rossi, R. S.; Pellegrinelli, A.; Zerbi, P.; Rech, R.; Colombo,
439 R.; Antinori, S.; Corbellino, M., Pulmonary post-mortem findings in a series of COVID-19 cases
440 from northern Italy: a two-centre descriptive study. *The Lancet Infectious Diseases* **2020**.
- 441 35. Perera, Y.; Farina, H. G.; Hernández, I.; Mendoza, O.; Serrano, J. M.; Reyes, O.; Gómez, D. E.;
442 Gómez, R. E.; Acevedo, B. E.; Alonso, D. F., Systemic administration of a peptide that impairs
443 the protein kinase (CK2) phosphorylation reduces solid tumor growth in mice. *International*
444 *journal of cancer* **2008**, 122, (1), 57-62.
- 445 36. Pereda, R.; Gonzalez, D.; Rivero, H. B.; Rivero, J. C.; del Rosario Lopez, L.; Mezquia, N.;
446 Venegas, R.; Betancourt, J. R.; Dominguez, R. E., Therapeutic effectiveness of interferon alpha 2b
447 treatment for COVID-19 patient recovery. *medRxiv* **2020**.
- 448 37. Chan, K. H.; Farouji, I.; Harnoud, A. A.; Slim, J., Weakness and elevated creatinine kinase as the
449 initial presentation of coronavirus disease 2019 (COVID-19). *The American Journal of*
450 *Emergency Medicine* **2020**.
- 451 38. Velavan, T. P.; Meyer, C. G., Mild versus severe COVID-19: laboratory markers. *International*
452 *Journal of Infectious Diseases* **2020**.
- 453 39. Henry, B. M.; Aggarwal, G.; Wong, J.; Benoit, S.; Vikse, J.; Plebani, M.; Lippi, G., Lactate
454 dehydrogenase levels predict coronavirus disease 2019 (COVID-19) severity and mortality: A
455 pooled analysis. *The American Journal of Emergency Medicine* **2020**.
- 456

457 **Legends Figures**

458 **Figure 1: Chest-CT Evolution.**

459 Representative chest-CT images from one patient in the CIGB-325 group at day 0 and
460 day 7.

461 **Figure 2: Serum levels of Covid-19 linked markers.**

462 Serum levels of CPK (A), RCP (B) and LDH (C). Group I: CIGB-325 + Standard-of-
463 care. Group II: Standard-of-care.

Figure 1: Chest-CT Evolution

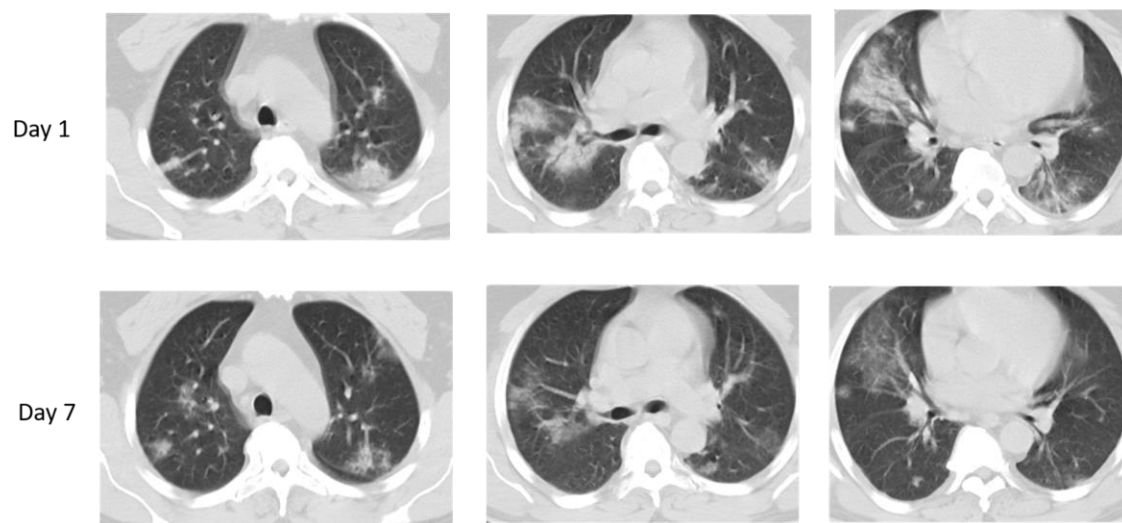
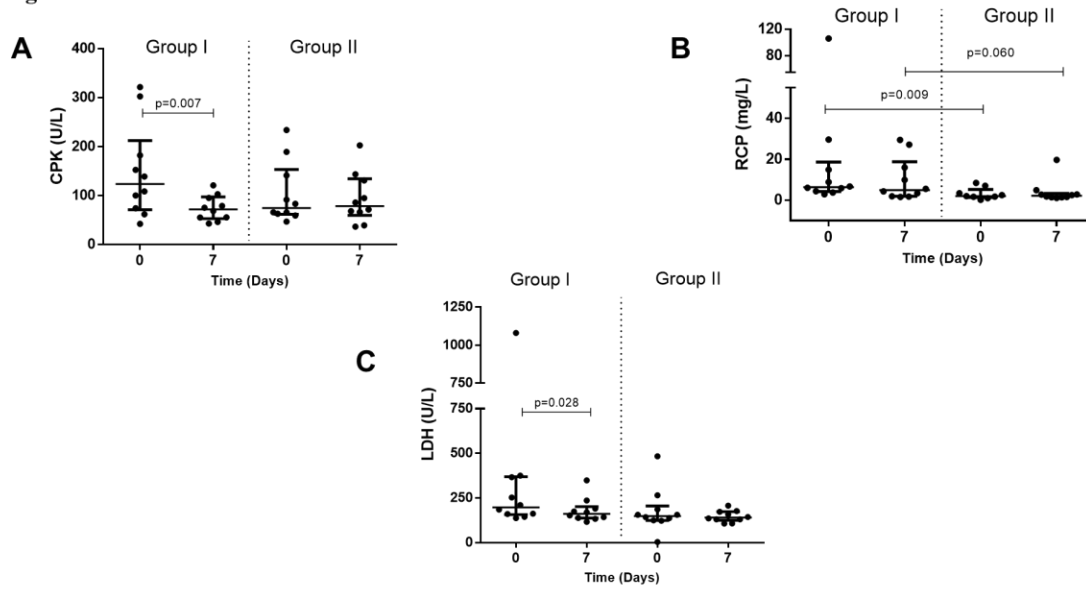


Figure 2: Serum levels of Covid-19 linked markers.



| Table 1. Demographic and Clinical Characteristics at Baseline | | | |
|--|-----------------------|--|---------------------------------|
| Characteristic | All (N=20) | CIGB-325 + Standard Care (N=10) | Standard Care (N=10) |
| Age (years) | 45.35±12.0 | 51.6±11.4 | 39.1±12.6 |
| Sex No. (%) | | | |
| Male | 14 (70) | 8 (80) | 6 (60) |
| Female | 6 (30) | 2 (20) | 4 (40) |
| Skin color No. (%) | | | |
| White | 12 (60) | 5 (50) | 7 (70) |
| Mestizo | 2 (20) | 1 (10) | 1 (10) |
| Black | 6 (20) | 4 (40) | 2 (20) |
| Coexisting conditions No./Total No. (%) | | | |
| Hypertension | 5 (25) | 5 (50) | 0 (0.0) |
| Obesity | 5 (25) | 2 (20) | 3 (30) |
| Type 2 Diabetes | 0 (0.0) | 0 (0.0) | 0 (0.0) |
| Cancer | 1 (5) | 1 (10) | 0 (0.0) |
| Iron deficiency Anemia | 1 (5) | 0 (0.0) | 1 (10) |
| Hypothyroidism | 1 (5) | 0 (0.0) | 1 (10) |
| Glaucoma | 1 (5) | 0 (0.0) | 1 (10) |
| Clinical status at enrollment | | | |
| Asymptomatic | 14 (70) | 6 (60) | 8 (80) |
| Symptomatic | 6 (20) | 4 (40) | 2 (20) |
| Clinical status at the starting day of treatment | | | |
| Asymptomatic | 9 (45) | 3 (30) | 6 (60) |
| Mild | 0 (0.0) | 0 (0.0) | 0 (0.0) |
| Moderate | 9 (45) | 5 (50) | 4 (40) |
| Severe | 2 (10) | 2 (20) | 0 (0.0) |
| Symptoms | | | |
| Headache | 3 (15) | 2 (20) | 1 (10) |
| Anosmia | 1 (5) | 0 (0.0) | 1 (10) |
| Loss of taste | 1 (5) | 0 (0.0) | 1 (10) |
| Fever | 2 (10) | 2 (20) | 0 (0.0) |
| Dry cough | 2 (10) | 1 (10) | 1 (10) |
| Loss of appetite | 1 (5) | 1 (10) | 0 (0.0) |
| Shortness of breath | 1 (5) | 0 (0.0) | 1 (10) |
| Diarrhea | 1 (5) | 1 (10) | 0 (0.0) |

| Table 2: Chest-CT evolution considering number of pulmonary lesions | | | | | |
|--|---------------|-------------|-------------------|--------------|------------------------|
| | | Group | I | II | Sign. (U-Mann Whitney) |
| | | N* | 6 | 7 | |
| Number of lesions | Day 0 | Median ± RI | 9.5 ± 10.0 | 3.0 ± 5.0 | 0.051 |
| | | (Min; Max) | (0; 18) | (0; 10) | |
| | Day 7 | Median ± RI | 5.5 ± 10.0 | 2.0 ± 5.0 | 0.149 |
| | | (Min; Max) | (0; 17) | (0; 6) | |
| | | | Sign. (Wilcoxon) | 0.042 | 0.680 |
| Reduction of lesions | YES | | 5 (83.3%) | 3 (42.9%) | 0.266 (Fisher) |
| | NO | | 1 (16.7%) | 4 (57.1%) | |
| | Dif. (IC 95%) | | 41.4 (-6.9; 78.6) | | Bayesian analysis |
| | P (Dif.>0) | | 0.951 | | |

* Per protocol population defined as patients who completed the originally allocated and patients that have TAC at the beginning and at the end of treatment.

| Table 3: Chest-CT evolution considering lesion's extent | | | | | |
|--|---------------|------------------|------------------|-----------|---------------------------|
| | | Group | I | II | Sign. (U-Mann Whitney) |
| | | N* | 7 | 9 | |
| Lesion's extent (Score 1-5) | Day 0 | Median ± RI | 4.5 ± 10.0 | 2.0 ± 5.0 | 0.146 |
| | | (Min; Max) | (0; 18) | (0; 6) | |
| | Day 7 | Median ± RI | 3.5 ± 10.0 | 2.0 ± 3.0 | 0.189 |
| | | (Min; Max) | (0; 15) | (0; 6) | |
| | | Sign. (Wilcoxon) | 0.066 | 1.000 | |
| Reduction of lesion's extent | YES | | 4 (66.7%) | 1 (14.3%) | 0.103 (Fisher) |
| | NO | | 2 (33.0%) | 6 (85.7%) | |
| | Dif. (IC 95%) | | 53.2 (3.6; 86.8) | | Bayesian analysis |
| | P (Dif.>0) | | 0.982 | | |

* Per protocol population defined as patients who completed the originally allocated and patients that have TAC at the beginning and at the end of treatment

| Table 4: Overall chest-CT response | | | | | | |
|---|--|--------------------|-------|-----------|-------|----------------------|
| Group | | I | | II | | Sig. (Fisher) |
| N | | Frequency | % | Frequency | % | |
| Chest-CT response | | 10 | 100.0 | 10 | 100.0 | 0.592 |
| N* | | 6 | 60.0 | 7 | 70.0 | |
| Responders | | 3 | 50.0 | 2 | 28.6 | |
| No progression | | 1 | 16.7 | 2 | 28.6 | |
| Stable | | 2 | 33.3 | 1 | 14.3 | |
| Progression | | 0 | 0.0 | 2 | 28.6 | Bayesian analysis |
| Dif. (IC 95%) | | 21.0 (-28.6; 66.0) | | | | |
| P (Dif.>0) | | 0.796 | | | | |

* Per protocol population defined as patients who completed the originally allocated and patients that have TAC at the beginning and at the end of treatment.

| Table 5: Adverse events | | | | | | | | |
|--------------------------------|------------------|----------|------------------|----------|------------------|----------|------------------|----------|
| | Group I | | | | Group II | | | |
| | Patients | | Events | | Patients | | Events | |
| | Frequency | % | Frequency | % | Frequency | % | Frequency | % |
| N | 10 | 100 | 109 | 100 | 10 | 100 | 7 | 100 |
| Pruritus | 10 | 100.0 | 48 | 44.0 | -- | -- | -- | -- |
| Rash | 6 | 60.0 | 12 | 11.0 | -- | -- | -- | -- |
| Flush | 8 | 80.0 | 23 | 21.1 | -- | -- | -- | -- |
| Hot flashes | 5 | 50.0 | 12 | 11.0 | -- | -- | -- | -- |
| Wheals | 3 | 30.0 | 5 | 4.6 | -- | -- | -- | -- |
| Bradycardia | 1 | 10.0 | 1 | 0.9 | -- | -- | -- | -- |
| Cramps | 2 | 20.0 | 2 | 1.8 | 1 | 10.0 | 1 | 14.3 |
| Trembling | 2 | 20.0 | 2 | 1.8 | -- | -- | -- | -- |
| Chills | 1 | 10.0 | 1 | 0.9 | -- | -- | -- | -- |
| Nausea | 1 | 10.0 | 1 | 0.9 | 1 | 10.0 | 2 | 28.6 |
| Tinnitus | 1 | 10.0 | 2 | 1.8 | -- | -- | -- | -- |
| Diarrhea | -- | -- | -- | -- | 1 | 10.0 | 2 | 28.6 |
| Headache | -- | -- | -- | -- | 1 | 10.0 | 2 | 28.6 |

Group I: CIGB-325 plus standard-of-care Group II: Standard-of-care