

# Early detection of seasonality and second waves prediction in the Covid-19 pandemic

Márcio Watanabe  
Universidade Federal Fluminense

## Abstract

Seasonality plays an essential role in the dynamics of many infectious diseases. In this study, we use statistical methods to show how to detect the presence of seasonality in a pandemic at the beginning of the seasonal period and that seasonality strongly affects SARS-coV-2 transmission. We measure the expected seasonality effect in the mean transmission rate of SARS-coV-2 and use available data to predict when a second wave of the Covid-19 will happen. In addition, we measure the average global effect of social distancing measures. The seasonal force of transmission of Covid-19 increases in September in the Northern hemisphere and in April in the Southern hemisphere. These predictions provide critical information for public health officials to plan their actions to combat the new coronavirus disease and to identify and measure seasonal effects in a future pandemic.

## 1. Introduction

During the Covid-19 pandemic many public authorities made their decisions based on predictions drawn from epidemiological compartmental models. The most famous of these models is also one of the simplest, the basic SEIR model. It can be seen as a qualitative epidemic model, as it is useful to understand the qualitative behavior of the dynamics of an epidemic. However, using such a simple model to make quantitative predictions mainly for long term variables, such as the total size of epidemics, seems like an oversimplification.<sup>1</sup>

The real world Covid-19 pandemic is a complex phenomenon in which many other factors must be considered to obtain qualitative understanding and quantitative predictive power. The exponential growth of a SEIR model is better suited to model a single epidemic in a homogeneous closed system like a small town. The dynamics of interconnected open systems with several cities and several countries, as we have in a pandemic, requires more sophisticated models such as meta-population models or agent-based models.<sup>5</sup> The existence of several subgroups with considerably different epidemiological characteristics, such as mobility, makes the homogeneous assumption obsolete. The social distancing measures used to decrease the transmission rates around the world added more difficulty to these predictive models. Many other factors also appear to influence the dynamics of Covid-19 pandemic, but there is a well-known essential epidemiological phenomenon that is lacking in most of the models used by scientists and health officials so far: Covid-19 seasonality.

Many infectious diseases and particularly viral infectious diseases with respiratory transmission have a seasonal pattern of transmission at some level.<sup>2,3</sup> This implies that there is a period of the year when the transmission rate is highest and major epidemics are observed in this period in contrast with a complementary period of the year when the transmission rate is significantly lower.

Influenza viruses, pneumonia, rotavirus, cholera, measles, dengue and other coronavirus viruses are some of the many infectious diseases where seasonality has an important effect on the rate of transmission.<sup>2-10</sup>

Seasonality should not be confused with temperature. Although temperature is an important factor positively correlated with seasonality, there are many other factors that also influence this complex phenomenon. Climate factors, those behavior factors and biological factors, among others, can be associated with seasonal forces: precipitation, human mobility, school calendar, immunity and many others.<sup>1,2,5,6</sup> In addition, these factors

vary from place to place and therefore must be put in a relative perspective. For example, an average temperature of 15 degrees Celsius is associated with winter days in tropical areas, on the other hand, it is associated with summer days in higher latitudes. Hence, when quantifying the relationship between temperature and seasonal transmission force with data from various locations, careful analysis is necessary.<sup>4</sup>

Respiratory syndromes have a common pattern in which the transmission rate is typically higher in autumn and winter and lower in spring and summer.<sup>3,4</sup> Note that the months with the highest number of cases are reversed in the Northern and Southern hemispheres.

When considering the seasonal forces in modeling the dynamics of the disease, we usually have that the  $\beta$  transmission rate will be given not by a constant positive real number as in the basic SEIR model but by a non-constant function of time  $\beta_t$ . For clarity, consider that  $\beta_t$  assumes only two values  $\beta_{\max}$  and  $\beta_{\min}$ , where  $\beta_{\max} > \beta_{\min} > 0$ . That is, we divide the year into two periods, one where the transmission force is greater, with a transmission rate  $\beta_{\max}$  and another period where the transmission force is lower with  $\beta_{\min}$  transmission rate. We can also associate other epidemiological parameters with  $\beta_{\max}$  and  $\beta_{\min}$  such as the basic reproduction number  $R_0$ . If  $R_0$  is measured during a high season period where  $\beta(t) = \beta_{\max}$  then we will obtain  $R_0 = R_{0_{\max}}$ . But if  $R_0$  is measured outside the seasonal period,  $\beta(t) = \beta_{\min}$  and we will obtain  $R_0 = R_{0_{\min}}$  where  $R_{0_{\max}} > R_{0_{\min}}$ .

The seasonality is fundamental in the dynamics of seasonal diseases and it is vital for long-term forecasts.<sup>1</sup> Estimating the  $\beta_t$  transmission function by obtaining estimates for the seasonal period and for  $\beta_{\max}$  and  $\beta_{\min}$  parameters or for associated parameters such as  $R_{0_{\max}}$  and  $R_{0_{\min}}$  is crucial for the public health authorities in planning and preventing a seasonal disease.<sup>1</sup>In particular, second wave forecasts are notably influenced by seasonality.

## 2. Results

We show below that Covid-19 transmission is highly affected by seasonality. We initially estimated that its expected global seasonal period coincides with the expected seasonal period of other respiratory syndromes particularly with the expected seasonal H1N1 period, which runs from the September to March in the Northern hemisphere and from April to August in the Southern hemisphere.<sup>10</sup> In these seasonal periods, the rate of transmission is higher and larger epidemics are expected. Formally, we call the time interval where  $\beta = \beta_{\max}$  of seasonal period. We define the seasonal moment of reversal as the beginning of the seasonal period, that is, the expected moment when the  $\beta$  increases from  $\beta_{\min}$  to  $\beta_{\max}$ .

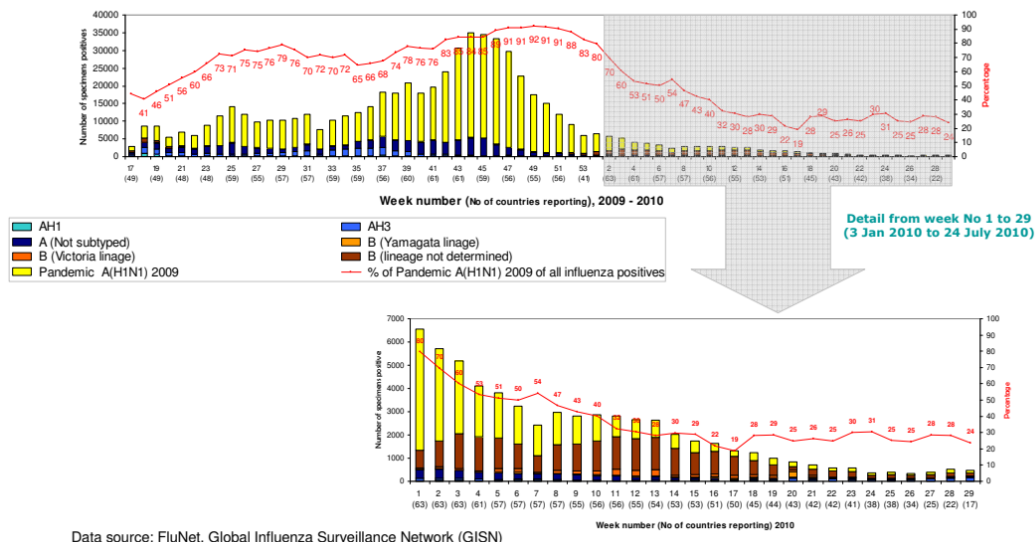
However, there is some natural variability in data from endemic diseases. Thus, we also use data from another pandemic, where we can find epidemiological data from several countries in a synchronized way. The 2009 H1N1 pandemic data for Northern and Southern hemispheres are shown in Figure 1, taken from the World Health Organization database.<sup>11</sup> We can see that the September was indeed a seasonal moment of reversal for the H1N1 pandemic, as we can see an increase in the number of cases in the Northern hemisphere during this month. Thus, we estimate this to be the next moment of reversal for the Covid-19 pandemic and we set April 15 and September 15 as approximate dates when the Covid-19 transmission rate changes in both hemispheres.

It is important to emphasize that this global seasonal period is an average of the seasonal periods of the countries around the world. The seasonal period varies from one location to another and the global seasonal period can be seen as an expected value for a country chosen at random. Therefore, in some places the transmission rate will increase before this expected period, while in others it will increase after the expected seasonal period.

Graph produced: 3 August 2010

## Northern hemisphere circulation of influenza viruses

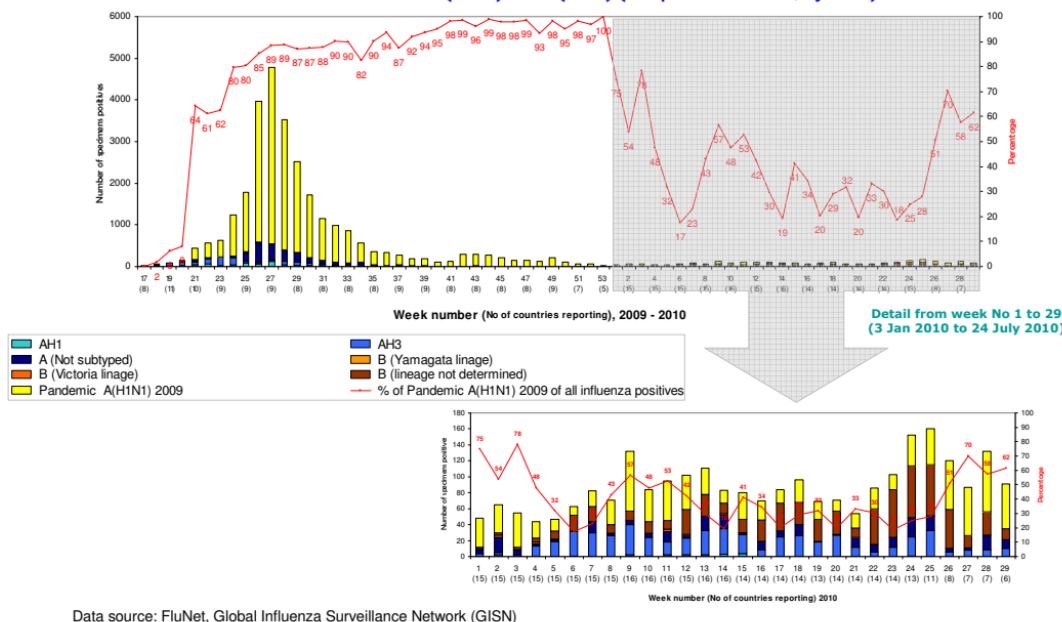
Number of specimens positives for influenza by subtypes  
From week No 17 (2009) to 29 (2010) (19 April 2009 to 24 July 2010)



Graph produced: 03 August 2010

## Southern hemisphere circulation of influenza viruses

Number of specimens positives for influenza by subtypes  
From week No 17 (2009) to 29 (2010) (19 April 2009 to 24 July 2010)



**Figure 1 – Seasonality of the 2009 H1N1 Pandemic:** From the curve of the Southern hemisphere, we observed a consistent increase in the number of cases since the beginning of the data, in week 17, corresponding to the second half of April. From the curve of the Northern hemisphere we can see that week 37, which corresponds to the first week of September, was the approximate moment when the number of cases started to increase reaching its peak in late October.

Likewise, we can expect a second seasonal period for Covid-19 in the Northern hemisphere starting in September. Graphics obtained from WHO website.<sup>12</sup>

In addition it is very important to distinguish the seasonal period where transmission is greatest from the epidemic period where the number of cases is highest. They are highly correlated in seasonal diseases, but the seasonal period usually starts earlier and influences the epidemic period, but the former does not determine the latter. Many other factors influence the size and duration of epidemic periods, such as the proportion of susceptible populations. The seasonal period begins when epidemics accelerate, that is, we look at the variation in the number of cases and not at the number of cases themselves. Meanwhile, in the epidemic period we look at the number of cases itself. Typically, seasonal periods start a few weeks before the epidemic periods and ends a few weeks later, especially when the proportion of susceptible population is small.

Before obtaining estimates for the seasonal effect on the Covid-19 transmission, we first estimate the effect of the social distancing measures. In this pandemic, social distancing measures have been widely adopted, influencing the transmission rate of Sars-Cov2 in most countries in the world. As we expected the reversal of seasonality to occur in April, it is crucial to take into account the effect of social distancing measures to properly estimate seasonal effect.

## Measuring the effect of Social Distancing

In addition to its intrinsic importance, we estimate the effect of global social distancing measures in order to discriminate it from the seasonal effect because coincidentally the social distancing measures were taken at the end of March which is very close to April where we expect the reversal moment of seasonality.

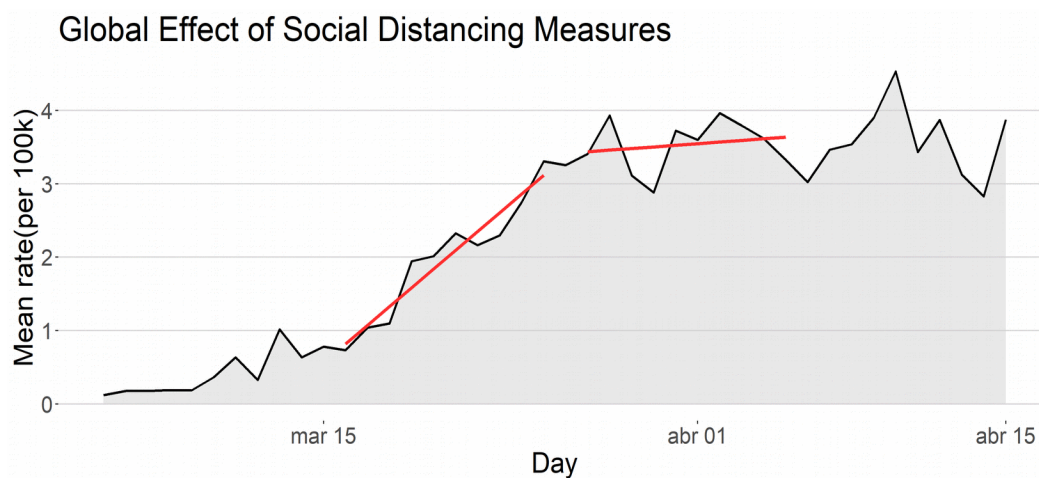
For each one of the 50 countries with the greatest epidemics by April 15, we have collected the dates when they began to adopt social distancing measures. This data was obtained from two different websites for each country from various sources on the internet. For those countries that adopted different social distancing measures on different dates, we considered only the first one. Details can be found in the supplementary material.

The average start date for social distancing measures was March 19, with standard deviation 5.7 days. The countries in the Northern and Southern hemispheres had similar start dates, with means 18.8 and 20, respectively. We take the mean effect of social distancing (MESD) as the difference between the slopes for periods of 10 days before and after the adoption of the measures. Formally, let B be the slope of the regression line from the mean rate of cases from March 17 to March 26. Let A be the slope of the regression line from the mean rate of cases from March 27 to April 5. The one week gap from March 19 and the beginning of this interval is due to the fact that there is a delay between the adoption of a control measure and its impact on reported cases, as the disease has a median incubation period of 4 days and there are some days of delay between the laboratory test and its result. The total delay vary between countries but we consider 7 days as a rough estimate of the total delay. The length of the interval is 10 days because the social distancing measures started very close to the expected seasonality period that should be somewhere in April. Therefore we must consider it as small as possible to avoid confusion between social distancing effect and seasonality effect. We define  $MESD = A - B$ .

Figure 2 shows the graph of the world average Covid-19 case rates with the regression lines before and after March 19. We obtain slope estimates and 95% confidence intervals given by  $B=0.2431$  ( $CI=[0.1833, 0.3030]$ ),  $A=0.0220$  ( $CI=[-0.0712, 0.1152]$ ).  $MESD=-0.2211$ , which represents a relative reduction of 90.9%. As the upper limit 0.1152 for A is less than B we reject the hypothesis that  $A = B$  with a 95% confidence level. Thus, there is sufficient statistical evidence that the social distancing measures have decreased, at least for the short term, the global average growth rate of Covid-19's cases with an estimated relative reduction of 90.9% in the speed of growth.

To ensure that the seasonality effect is not confusing this analysis, we do the same analysis for the Northern and Southern hemispheres to see if there is a similar behavior in both groups. For the Northern hemisphere  $B=0.2465$ ,  $A = 0.0487$  and  $MESD= -0.1978$  which represents a relative reduction of 80.2%. For the Southern hemisphere,  $B=0.0681$ ,  $A = 0.0130$  and  $MESD= -0.0552$ , which represents a relative reduction of 81.0%. Hence, the qualitative behavior was the same in both hemispheres in the periods immediately before and after the adoption of social distancing measures and we conclude that the reduction in the global growth rate at the end of March was not due to seasonality. For more details, see the supplementary material.

Note: Remember that the union of North and South groups does not form the World group because we added Argentine, New Zealand and South Africa to the Southern group although they are not in the 50 largest epidemics of the measured period.



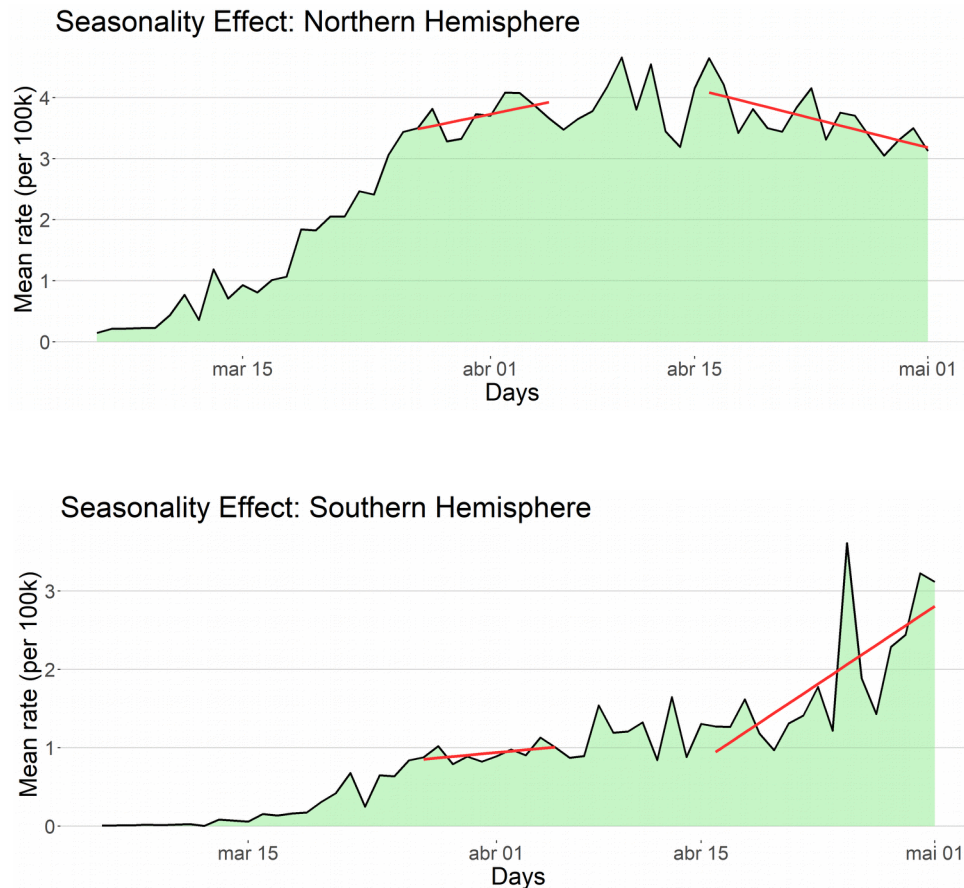
**Figure 2 - Social distancing effect:** The black curve shows the global average rate of cases per 100k inhabitants. The left red line is the linear regression line for a period of 10 days before the effects of social distancing measures appear. The right red line is the linear regression line for a 10 days period starting one week after March 19, the average start date for social distancing measures.

### Measuring the seasonality effect

We are now ready to estimate the effect of seasonality on Covid-19 transmission. First, we consider the seasonal effect for each hemisphere as the variation in the slope for the mean pooled rate at the expected moment of seasonal reversal, which we estimate as April 15. Likewise, as we did to obtain the effect of social distancing, we defined the mean seasonal effect in the Northern hemisphere (MSEN) to be  $A-B$ , where  $B$  is now the slope of the regression line of the mean rate of cases from March 27 to April 5. Let  $A$  be the slope of the regression line of the mean rate of cases from April 16 to May 1. Likewise, we define the mean seasonal effect in the Southern hemisphere (MSES).

Figure 3 below gives a clear picture of how the mean daily rate of cases changed in different directions just after the estimated moment of seasonal reversal. To quantify this difference, we obtain the estimates of the slopes of the Northern hemisphere and 95% confidence intervals given by  $B=0.0488$  ( $CI=[-0.0142, 0.1118]$ ),  $A= -0.0602$  ( $CI=[-0.0983, -0.0222]$ ).  $MSEN= -0.1091$ , which represents a relative reduction of 180.9%. We interpret a relative reduction greater than 100% as a reduction which changes a positive slope to a negative one. Since the upper limit  $-0.0222$  for  $A$  is less than  $B$ , we reject the hypothesis that  $A = B$  with 95% confidence level.

For the Southern hemisphere, slope estimates and 95% confidence intervals are given by  $B=0.0130$  ( $CI=[0.1833, 0.3030]$ ),  $A=0.1089$  ( $CI=[-0.0712, 0.1152]$ ).  $MSES=0.0959$ , which represents a relative increase of 740.3%. As the upper limit 0.1152 for  $A$  is less than the estimate for  $B$  we reject the hypothesis that  $A=B$  with 95% confidence level.



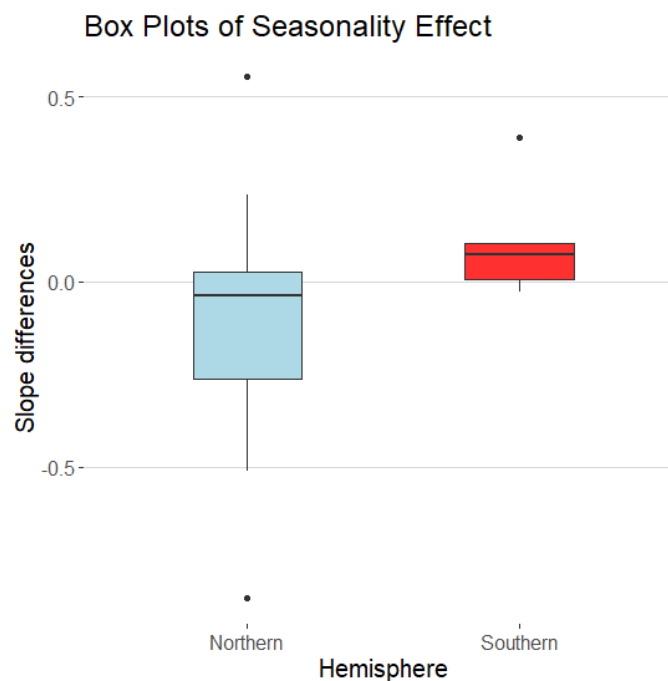
**Figure 3 - Seasonality effect:** black curves show the average rate of cases per 100k inhabitants for countries in the Northern and Southern hemispheres, respectively, from March 5 to May 1. Left red lines are the linear regression lines immediate before the expected seasonal period and right red lines are linear regression lines immediate after the expected seasonal period for both hemispheres.

Consider that the social distancing effect could potentially influence greater drop in a period of time greater than the 10 days that we have taken in its definition, so as a consequence part of the decrease in the slope of the Northern hemisphere that we are attributing to the seasonal effect could be given by the effect of social distancing measures. However, assuming this is true, then a similar effect would be occurring in the Southern hemisphere and the absolute seasonality effect would be even greater, which is a contradiction, since we would have a very small seasonal effect in one hemisphere and a very large seasonal effect on the other. In addition, the average time interval between the start of social distancing measures (March 19) and the start of the data time interval that we use to measure the seasonal effect (April 16) is less than a month. It seems unlikely that the effect of fatigue is responsible for increasing the rate of cases the Southern hemisphere only in such a short time.

Hence, there is sufficient statistical evidence that points to a consistent seasonality effect in the Covid-19 pandemic.

Our results partially contradict the results obtained by Flaxman et al.<sup>12</sup> and Islam et al.<sup>13</sup>. In the first study, the decrease in daily cases in 11 European countries in late April and early May is attributed exclusively to social distancing interventions without considering seasonality or other possible confounding factors. In the second, data from the around the world are analyzed, but again the entire effect is attributed to social distancing measures without considering other factors such as seasonality.

Lastly, to access the variability of the seasonal effect, we show in figure 4 the box-plots of the seasonal effects for the Southern and Northern hemispheres. This emphasizes the difference in the distribution of the effects of the two hemispheres, which corroborates the hypothesis of seasonality.



**Figure 4 – Seasonal effect boxplots:** the boxplot for seasonal effects of countries in the Northern hemisphere is shown on the left (light blue boxplot). The boxplot for seasonal effects from countries in the Southern hemisphere is shown on the right (red boxplot).

### 3. Discussion

#### Prediction of second waves and consequences for decision making

The Seasonal force of transmission drives the second waves in seasonal diseases. Once the seasonal effect is established in Covid-19 and its seasonal periods are known, we can predict the appearance of future epidemics. In particular, a second wave is expected to begin in September in the Northern hemisphere. In contrast, a significant reduction in the transmission rate is expected to begin in countries of the Southern hemisphere in September.

We estimated that the seasonal periods occur from April to September (high season in the south) and from September to April (high season in the north). These are the periods when the transmission rate is highest in each hemisphere. They are highly related to the epidemic periods, but the former should not be confused with the latter. The seasonal moments of reversal are good estimates for the beginning of the increase in the number of cases in the countries of the respective hemisphere. Therefore, we expect a general increase in the number of Covid-19 cases in most countries in the Northern hemisphere in mid-September and a general decrease in the number of cases in most countries in the Southern hemisphere to begin at the same time.

Nevertheless, remind that epidemic periods also depend on other variables such as the percentage of the susceptible population and that each city has its own seasonal transmission rates  $\beta_{\max}$  and  $\beta_{\min}$ . Thus, places where major epidemics have occurred will have less impact with this change in the rate of transmission. Some possible examples are Sweden, Belgium and some cities in the United States, Spain and Italy that have already had major epidemics and where the increase in the rate of transmission will affect less the size of the epidemic due to a smaller proportion of the susceptible population. On the other hand, some countries with very large proportions of susceptible population will be more affected if they do not control their epidemics. Some examples are most countries in Europe and Asia.

The first wave in most of Europe and the rest of the Northern hemisphere lasted mainly just two months or less, from mid-February to mid-April. The social distancing measures had to be adopted for around two months before the seasonal period ended. In May, when the majority of European countries began to make social distancing measures more flexible, the rate of transmission was lower and the epidemics were controlled with less stringent measures. Cities with  $\beta_{\min} < 1$  did not see the continuation of the epidemic. Some other locations, like some cities in the United States, certainly have  $\beta_{\min} > 1$  and therefore, the epidemic continued to increase. Nonetheless, it is important to note that they have not been affected by the seasonal effect.

In the Southern hemisphere, the social distancing measures had an effect similar to that of the Northern hemisphere, producing a stabilization in the number of cases in the first two weeks of April. But the seasonal effect produced a significant increase in the transmission rate, which went from  $\beta_{\min}$  to  $\beta_{\max}$  and in addition to the social distancing measures, the number of cases increased consistently from April 15. Moreover, more restrictive measures such as lockdown, though effective, they could not be adopted for the entire seasonal period which extends over 6 months. An example is Argentina, which kept its epidemic controlled by lockdown measures like most of Europe but when it started to become more flexible (either officially or due to population fatigue) the number of cases increased differently from what happened in Europe because the transmission rate was  $\beta_{\max}$  instead of  $\beta_{\min}$ . From September 2020 to March 2021 the transmission rate in the Southern hemisphere will decrease from  $\beta_{\max}$  to  $\beta_{\min}$ . In places where  $\beta_{\min} < 1$ , the epidemic will be controlled and in places with smaller proportions of susceptible populations, such as most of South America and South Africa, we also expect the epidemic to be controlled. Nevertheless, some countries with large proportions of susceptible populations like New Zealand and Australia, may experience major epidemics in cities where  $\beta_{\min} > 1$  if no control measures are adopted.

With the seasonality effect taken into account, we predict that many (but not all) countries in the Northern hemisphere will have second waves which will begin more generally during September and will increase in October and November. In fact, at the end of August, when this article was finalized, the trend of increasing the number of cases in some countries in the Northern hemisphere restrictive social distancing measures such as lockdown maybe be not as good as it was in the first wave due to the length of the period high season will take its entire six-month span. Other control measures such as vaccination of a part of the population must be adopted. Until vaccines are not available, other control measures such as active contact tracing will have to be adopted, otherwise effective social distancing would have to last until either a vaccine is available or mid-April. The other option is mitigating measures such as less restrictive social distancing measures and waiting for herd immunity.



## Detection of Seasonality in future pandemics

We briefly describe below the steps to detect the presence of seasonal effects in future pandemics:

- 1) The comparison between aggregated slopes in the Southern and Northern hemispheres curves can be used to detect seasonality at the beginning of a pandemic, even with data from a short period of time. Beware of confounding factors must be taken in this preliminary analysis.
- 2) Monitoring abrupt changes in their slopes (either  $R_{ts}$  or  $\beta_i$ ) close to estimated seasonal moment of reversal (expected begin of seasonal) is a way to confirm this detection.
- 3) Measuring changes in data of the chosen parameters, before and after the seasonal moment of reversal provides an estimate of the seasonal effect.

Our method is particularly useful for detecting seasonality during a pandemic, since a large amount of data from both hemispheres are available in this case. In minor epidemics where data from many countries are not available, data from a small number of countries can still be used to apply this methodology as long as data from countries in both hemispheres are available. In the event of an epidemic in a given country, data on similar diseases could be used to make the comparison and provide possible evidence of seasonal forces in transmission.

Note that we can measure the seasonal force of infection by obtaining the reproduction number  $R_t$  for the high and low seasonal periods. Since the  $R_0$  ( $R_t$ ) is a very popular measure, it is tempting to calculate it for pooled data for both hemispheres or, alternatively, it can be calculated for each country separately and then obtain averages. In both cases we believe this method would be technically incorrect. To be properly calculated, it must be obtained from the mean of all  $R_0$  for each city in the sample, not each country. We did not perform this valuable analysis because we were unable to obtain data at a city-level granularity in the limited time we have due to the urgency of the pandemic. Therefore, this important methodology is led to future work.

## Methods

This section is a summary of the methodology applied in this study. Further details and additional analysis can be found in the supplementary material. The data we use was obtained from the John Hopkins University website and it was verified from the data released by national disease control centers, when this information was available. The data were analyzed using the statistical software R 64 bits version 4.0.0

We gathered daily data for the 50 countries with the greatest epidemics, as measured by the number of confirmed cases from March 1 to May 1 (or other period when cited). The inclusion criteria were: 1) have at least 1000 confirmed cases in this period; 2) having data from daily confirmed cases by either notification or onset of symptoms (in this criterion, China was the only country removed from the pool); 3) have at least 90% of its territory in the same hemisphere (this criteria was necessary to make clear for which hemisphere the country would be assigned to. In this criterion, Colombia, Ecuador, Indonesia and Singapore were removed from the pool).

Then, when appropriate, we separate countries into 2 different groups, according to whether their majority territory is in the northern or southern hemispheres. We obtained few countries for the South hemisphere group so we decided to include other countries with more than 1000 cases in the period that were among the top 100 epidemics. For this criteria, South Africa, Argentina and New Zealand were included in the Southern hemisphere group. For each country, we calculate the rate of confirmed cases per 100k inhabitants. For each day, we calculate the rate per 100k inhabitants for each selected country and calculate its simple mean. We study the global dynamics of the pandemic by analyzing the time series curves for average daily cases and rates.

We can interpret the time curves of the average rates as showing the average dynamics of the epidemic in each hemisphere from a country perspective. That is, it displays the expected dynamics if we randomly draw a

country. An advantage of this curve is that it gives us an insight into the behavior of the pandemic itself, without being too much affected by a single country.

We define the expected moment of seasonality reversion as the expected week (day or month) when the transmission rate of a seasonal disease changes due to seasonal reason. This variable varies from country to country and even within a country. It can also vary from one disease to another. As Covid-19 is transmitted as a respiratory disease, we estimate the expected seasonality moment of reversal for Covid-19 from H1N1 2009 pandemic and along with data from other respiratory syndromes.

To quantify the change in confirmed case rates in each hemisphere, we perform a simple linear regression before and after the expected moment of seasonality reversal. To decrease the influence of other factors and a possible confounding effect, we consider the slopes for a short period of ten days before and two weeks after the expected seasonality moment of reversal.

The mean seasonal effect for the Northern hemisphere (MSEN) is calculated as the difference between the slopes for that hemisphere before and after the expected seasonality moment of reversal. We test the hypotheses that seasonality did not affected Covid-19 transmission with the null hypotheses  $H_0: MSEN=0$ . Likewise, we perform definition and testing for the Southern hemisphere.

We calculate the slope variation for each hemisphere at time point  $t$  as the difference between the slope of the curve in a short period of days (ten days or two weeks) after  $t$  minus the slope of the curve in a short period of days before  $t$ . The 10day (2-week) extension is chosen because a shorter time interval would be subject to a great variability due to a small number of time points in its estimation. On the other hand, a longer period of time would be subject to the influence of other factors, generating possible confounding factor.

To accesses the variability of seasonal effect between different countries, we display the box-plots of seasonal effects (slope differences before and after the expected seasonality moment of reversal) for countries from both hemispheres separately.

## References

1. Grassly NC, Fraser C. Seasonal infectious disease epidemiology. *Proc Biol Sci.* 2006;273:2541–50.
2. Altizer S, Dobson A, Hosseini P, Hudson P, Pascual M& Rohani P. Seasonality and the dynamics of infectious diseases. *J. Anim. Ecol.* 9, (2006) 467–484
3. Moriyama M, Hugentobler WJ, Iwasaki A. Seasonality of respiratory viral infections. *Annu. Rev. Virol.* 2020. 7:2.1–2.19; doi:
4. Dowell, Scott F., et al. "Seasonal patterns of invasive pneumococcal disease." *Emerging infectious diseases* 9.5 (2003): 573-579.
5. Ferrari, Matthew J., et al. "The dynamics of measles in sub-Saharan Africa." *Nature* 451.7179 (2008): 679-684.
6. Fine, Paul EM, and Jacqueline A. Clarkson. "Measles in England and Wales—I: an analysis of factors underlying seasonal patterns." *International journal of epidemiology* 11.1 (1982): 5-14.

7. Koelle, Katia, et al. "Refractory periods and climate forcing in cholera dynamics." *Nature* 436.7051 (2005): 696-700.
8. Cook, S. M., et al. "Global seasonality of rotavirus infections." *Bulletin of the World Health Organization* 68.2 (1990): 171.
9. Van Panhuis, Willem G., et al. "Region-wide synchrony and traveling waves of dengue across eight countries in Southeast Asia." *Proceedings of the National Academy of Sciences* 112.42 (2015): 13069-13074.
10. Centers for diseases control and prevention website. <https://www.cdc.gov/flu/weekly/index.htm>  
Date of access: 08/08/2020.
11. World Health Organization. Global Epidemiological Surveillance Standards for Influenza. (2013)  
[https://www.who.int/csr/disease/swineflu/Virologicaldatasouth2010\\_08\\_06.pdf?ua=1](https://www.who.int/csr/disease/swineflu/Virologicaldatasouth2010_08_06.pdf?ua=1)  
[https://www.who.int/csr/disease/swineflu/Virologicaldatanorth2010\\_08\\_06.pdf?ua=1](https://www.who.int/csr/disease/swineflu/Virologicaldatanorth2010_08_06.pdf?ua=1)  
Date of access: 08/08/2020.
12. Flaxman, S., Mishra, S., Gandy, A. *et al.* Estimating the effects of non-pharmaceutical interventions on COVID-19 in Europe. *Nature* 584, 257–261 (2020). <https://doi.org/10.1038/s41586-020-2405-7>
13. Islam, N. et al. Physical distancing interventions and incidence of coronavirus disease 2019: natural experiment in 149 countries. *BMJ* 2020; 370 doi: <https://doi.org/10.1136/bmj.m2743>

## Acknowledgements

The author thanks Rodrigo Dias for his support with the figures and Fernanda Di Genio for fruitful discussions.

**Funding:** No funding.

**Competing interests:** The author declares no competing interests.

**Data and materials availability:** The data was extracted from the John Hopkins University website <https://coronavirus.jhu.edu/> . More details and information are available at the supplementary material.