

1 **Effects of Public Health Interventions on the Epidemiological**
2 **Spread During the First Wave of the COVID-19 Outbreak in**
3 **Thailand**

4 Sipat Triukose^{1,2}, Sirin Nitinawarat^{1,3*}, Ponlapat Satian⁴, Anupap Somboonsavatdee⁵, Ponlachart
5 Chotikarn^{6,7}, Thunchanok Thammasanya⁸, Nasamon Wanlapakorn⁹, Natthinee Sudhinaraset⁹,
6 Pitakpol Boonyamalik¹⁰, Bancha Kakhong¹¹, Yong Poovorawan⁹

7 ¹Research group on Applied Digital Technology in Medicine (ATM), Chulalongkorn University,
8 Bangkok, Thailand

9 ²Chulalongkorn University Big Data Analytics and IoT Center (CUBIC), Chulalongkorn
10 University, Bangkok, Thailand

11 ³International School of Engineering, Faculty of Engineering, Chulalongkorn University,
12 Bangkok, Thailand

13 ⁴Lansaka Hospital, Office of the permanent secretary, Ministry of Public Health, Thailand

14 ⁵Greater Data Science Lab, Department of Statistics, Chulalongkorn Business School,
15 Chulalongkorn University, Bangkok, Thailand

16 ⁶Marine and Coastal Resources Institute, Faculty of Environmental Management, Prince of
17 Songkla University, Songkhla, Thailand

18 ⁷Coastal Oceanography and Climate Change Research Center, Prince of Songkla University,
19 Songkhla, Thailand

20 ⁸TrueEye Company Limited, Bangkok, Thailand

21 ⁹Center of Excellence in Clinical Virology, Department of Pediatrics, Faculty of Medicine,
22 Chulalongkorn University, Bangkok, Thailand

23 ¹⁰Office of the Permanent Secretary, Ministry of Public Health, Bangkok, Thailand

24 ¹¹Department of Health, Ministry of Public Health, Bangkok, Thailand

25

26 Corresponding author:

27 Sirin Nitinawarat, Ph.D.

28 Email: Sirin.N@chula.ac.th

29

30 **Keywords: COVID-19; Public health interventions; Reproduction numbers;**

31 **Epidemiological; Demographic spread**

32

33 **Short title:** Effects of Public Health Interventions on the COVID-19 Outbreak in Thailand

34

35 **Abstract**

36 A novel infectious respiratory disease was recognized in Wuhan (Hubei Province, China)
37 in December 2019. In February 2020, the disease was named “coronavirus disease 2019”
38 (COVID-19). COVID-19 became a pandemic in March 2020, and, since then, different countries
39 have implemented a broad spectrum of policies. Thailand is considered to be among the top
40 countries in handling its first wave of the outbreak -- 12 January to 31 July 2020. Here, we
41 illustrate how Thailand tackled the COVID-19 outbreak, particularly the effects of public health
42 interventions on the epidemiologic spread. This study shows how the available data from the
43 outbreak can be analyzed and visualized to quantify the severity of the outbreak, the
44 effectiveness of the interventions, and the level of risk of allowed activities during an easing of a
45 “lockdown.” This study shows how a well-organized governmental apparatus can overcome the
46 havoc caused by a pandemic.

47 **Introduction**

48 A novel coronavirus disease is officially recognized in Wuhan, China, in December 2019
49 [1]. In February 2020, the disease is later named Coronavirus disease 2019 (COVID-19), which
50 is an emerging infectious disease caused by the severe acute respiratory syndrome coronavirus 2
51 (SARS-CoV-2) [2]. After its first discovery, it had then swiftly spread globally. The World
52 Health Organization (WHO) declared the outbreak of a Public Health Emergency of
53 International Concern on 30 January 2020, and a pandemic on 11 March 2020 [3]. The severity
54 of the outbreak across different countries varies significantly due to several factors, such as
55 timeliness and strength of state interventions, country healthcare readiness, and socioeconomic
56 considerations [4]. In this regard, Thailand has been widely praised for its handling of the
57 COVID-19 outbreak. In particular, it is ranked second for the Global COVID-19 Index (GCI)
58 and first in Asia as of 31 July 2020 [5]. The index is developed by PEMADU Associates, in
59 collaboration with the Ministry of Science and Innovations of Malaysia and the Sunway Group.
60 The WHO has also chosen Thailand and New Zealand to be featured in their upcoming
61 documentary as exemplary countries that have handled COVID-19 most successfully [6].

62 Since the initial report of cases in Wuhan city on 31 December 2019, the Ministry of
63 Public Health Thailand implemented measures for screening travelers from Wuhan city on 3
64 January 2020 at Suvarnabhumi Airport, Don Mueang, Phuket, and Chiang Mai airports by
65 checking their body temperature and respiratory symptoms. Enhanced surveillance at public and
66 private hospitals was also initiated. Thailand identified the first case on 12 January 2020
67 (officially announced on 13 January 2020) [7]. The case was a 61-year-old Chinese woman
68 living in Wuhan City, Hubei Province, China. On 5 January 2020, she developed fever with
69 chills, sore throat, and headache. On 8 January 2020, she took a direct flight to Bangkok from

70 Wuhan City. The febrile illness was detected on the same day by thermal surveillance at
71 Suvarnabhumi Airport, Bangkok, Thailand. She was transferred to the hospital for further
72 investigations and treatment. Clinical samples were tested positive for coronaviruses by reverse
73 transcriptase-polymerase chain reaction (RT-PCR) on 12 January 2020. The genomic sequencing
74 analysis confirmed that the patient was infected with the novel coronavirus (2019-nCoV) [8].
75 The number of confirmed cases was still low throughout January and February 2020, during
76 which the confirmed cases were mostly from travelers who came from China or other countries
77 [8].

78 In early March 2020, the number of confirmed cases from local transmission started to
79 increase rapidly. Several transmission clusters contributed to the increased number of confirmed
80 cases in Thailand, the largest of which was at the entertainment venue and Thai boxing stadium
81 in Bangkok in early of March 2020 [8,9].

82 In response to the escalating situation, on 12 March 2020, the Thai Government
83 established the Center for COVID-19 Situation Administration (CCSA) as a single command
84 center to ensure a coherent view of the situation and unambiguous communication to the public
85 about all related matters.

86 On 18 March 2020, Thailand medical council declared a concerning statement and
87 demonstrated the first Thai statistical epidemiological model forecasting large outbreak scenarios
88 and their loads on the national healthcare capacity [8]. Since then, the Thai Government has
89 officially implemented multiple disease-controlling and public health policies in response to the
90 COVID-19 situation in Thailand [8].

91 On 3 May 2020, after a week of a low number of daily confirmed cases, the CCSA
92 announced that Thailand was entering the Easing period and started rolling out policies to relax
93 restrictions and interventions implemented earlier.

94 On 31 July 2020, when the global cumulative COVID-19 infected and death cases were
95 1,710,6007 and 668,910 respectively [10], Thailand exited the first wave of COVID-19 outbreak
96 gracefully with the cumulative COVID-19 infected, and death cases being 3,310 and 58,
97 respectively. This success was a collaborative effort of all healthcare-related personnel and all
98 Thais. On the same day, Thailand's confirmed case was ranked 107 of 213 countries affected by
99 COVID-19 [11].

100 In this study, the course of COVID-19 outbreak in Thailand is to be described and studied
101 together with the timeline of the Thai Government's disease-controlling and public health
102 policies that are needed to prepare for the outbreak scenarios. The objectives of this study are the
103 following: i) to report about Thailand's public health interventions and the epidemiological
104 dynamics of COVID-19 therein during the first wave of the epidemic, and ii) to gather lessons
105 learned from the first wave. In particular, our approach and results are reminiscent of those
106 reported in [1] for Wuhan, China. Still, the contexts of that article and ours are different as the
107 nature of the outbreak (started endogenously and exogenously respectively), interventions, and
108 enforcement in the various cities in two different countries. One of our significant findings is the
109 power of the effective reproduction number to forecast the future course of the epidemic, thereby
110 underlying its importance as a monitoring index that the Government could use to increase the
111 intervention strength at the right time to mitigate the potential surging of the epidemic. Given
112 how well Thailand has handled the first wave, we hope that the learned lessons are useful for
113 other countries, the general public, and Thailand itself during the second wave if it were to occur.

114 **Materials and methods**

115 **Data sources**

116 This study used the medical records of laboratory-confirmed COVID-19 patients in
117 Thailand from 12 January 2020 to 31 July 2020. These medical records were retrieved from the
118 Department of Disease Control of Thailand website [12]. The retrieved data set comprises age,
119 sex, nationality, date of confirmed COVID-19-positive, location of onset, isolation, and
120 quarantine history. The information about public health policies and critical events in this study
121 was extracted from the CCSA, and Thai Government official reports.

122 **Definition of the first-wave period**

123 We defined the first wave of COVID-19 outbreak in Thailand as the period from 12
124 January 2020, when the first imported case was identified (officially confirmed on 13 January) to
125 31 July 2020, one month from the beginning of the 5th easing period (see the easing periods
126 section) and the point at which Thailand had no local infectious report for 67 consecutive days.

127 **Classification of the five time periods**

128 In reflecting the dynamics of the first wave COVID-19 epidemic and its relationship to
129 corresponding interventions in Thailand, the first-wave period was classified into five epidemic
130 stages (Fig 1): (A) Early; (B) Spreading; (C) Intervention I; (D) Intervention II; (E) Easing. This
131 classification was based on critical events as well as public health interventions and policies (Fig
132 2).

133 **Fig 1. Epidemic curve across five stages during the COVID-19 outbreak in Thailand.**

134 **Fig 2. Timeline of key events and public health interventions across the five stages of the**
135 **COVID-19 epidemic in Thailand**

136

137 The Early stage (A) started from 12 January to 5 March 2020. The first imported and
138 local cases were identified on 12 January and 31 January 2020, respectively. On 1 March 2020,
139 Thailand had the first patient who died from COVID-19. During this stage, the total number of
140 COVID-19 cases was below 100 cases, and there was no strong public health intervention.
141 However, Thais were quite active in wearing facial masks due to the PM2.5 crisis during that
142 time.

143 The Spreading stage (B) was from 6–14 March 2020. This stage was a short period but
144 contained two “super-spreading” events in Bangkok: at the Lumpini boxing stadium on 6 March
145 2020 and an entertainment venue in the Thong Lo area on 9 March 2020. These events
146 contributed to the outbreak in Thailand [9]. After this stage, the number of total COVID-19
147 confirmed cases was higher than 100 cases, and Thailand entered the critical period of infectious
148 disease. The critical period (from 15 March to 14 April 2020 in the case of Thailand) is defined
149 as a 30-day duration from the first time at which the number of total confirmed cases is higher
150 than 100 cases [13]. It is believed to be an extremely crucial moment in combating an epidemic
151 because actions during this period dictate if the outbreak will be in or out of control.

152 The Intervention I stage (C), and Intervention II stage (D) were the stages that all Thais
153 put the people's lives in front of everything. Several public health intervention policies were
154 implemented, and most people cooperated. The Intervention I stage started at the same time at
155 the beginning of the critical period and lasted until 2 April 2020. During this period, local and
156 governmental authorities focused on reducing and preventing all social-gathering activities. The
157 Lumpini boxing stadium and the entertainment venue in Thong Lo were closed down on 15

158 March 2020. The Songkran festival (Thai New Year) -- a long holiday (similar to Christmas) in
159 which numerous people return home to reunite with their parents and loved ones -- was canceled
160 on 16 March 2020. Several public venues were closed down on 18 March 2020. Finally, on 22
161 March 2020, the Bangkok mayor shut down the city, resulting in the suspension of many jobs.
162 Unfortunately, the leaked news of the shutdown led to a massive migration of workforces in
163 Bangkok back to their hometown just before the actual shutdown. This was the key event that
164 caused the outbreak to spread countrywide. Therefore, the Intervention II stage, from 3 April to 2
165 May 2020, involved additional policies to control the route of transmission. A nationwide curfew
166 was implemented on 2 April 2020, and the Civil Aviation Authority of Thailand (CAAT) banned
167 all international flights to Thailand starting from 6 April 2020. A mandatory state quarantine was
168 established on 3 April 2020, for everyone traveling to Thailand. Alcohol sales were prohibited
169 from 12 April 2020, throughout the Intervention II period [9].

170 At the end of the critical period, public health intervention policies that local and
171 Government executed during the Intervention I and Intervention II stages were successful: the
172 number of daily confirmed cases in Thailand returned to the same level before the critical period.
173 Therefore, Thailand entered the Easing stage (E) from 3 May to 31 July 2020. In this stage,
174 restrictions correlated to the lower infectious risk were lifted and observed for 14 days before
175 proceeding to the next level, which eased the policies with higher contagious risk. In addition,
176 we compared the trade-off of the two different COVID-19 handling approaches on health and
177 economics by selecting two neighbours in Scandinavian, Sweden, Denmark, and Thailand as
178 subjects of our analysis. Sweden has been one of the countries that adopt the herd immunity
179 strategy. In contrast, Denmark and Thailand have used lockdown and social distancing measures
180 to limit local cases.

181 **Outcomes**

182 The number of daily confirmed cases is the total new laboratory-confirmed cases on a
183 particular day. It is interesting to note that the Government initially used a stringent criterion for
184 the case to be confirmed, requiring each individual to be approved by the two assigned national
185 laboratories. Later, on 22 March 2020, the criterion was changed, and a new case was confirmed
186 using just one national laboratory result, instead of two [14].

187 **Statistical analysis and data visualization**

188 Unless specified otherwise, all the data clean up, transformation, and calculation were
189 done using R and Python languages. The epidemic curves were generated by Tableau software.
190 Tables and Annotations on Figures were done using Apple Keynote and Microsoft Excel.

191 We follow the general statistical framework by Cori *et al.* [15] to estimate the effective
192 reproduction number at day t (R_t) and its credible band of all epidemic stages [15]. Under this
193 framework, the number of infected cases at day t (I_t) is assumed to have a Poisson distribution
194 with the rate of $R_t (\sum_{s=1}^t I_{t-s} w_s)$ where w_s 's are weights derived from the serial interval
195 distribution of the disease. Moreover, in this study, the serial interval distribution was assumed to
196 be gamma distribution with a mean and standard deviation of 7.5 and 3.4 days, respectively, as
197 described by Pan *et al.* [1], where they also applied the framework precisely to the COVID-19
198 epidemic in Wuhan, China. Under the Bayesian framework, the gamma distribution is used as a
199 prior distribution for the effective reproduction number where the obtained posterior distribution
200 will be used to estimate the effective reproduction number at time t (R_t) and its credible band
201 (see the supplementary of Cori *et al.* [15] for more detail).

202 We applied the mentioned methodology on the data from Thailand (country-level) and
203 the two hotspot provinces: Bangkok (the capital city) and Phuket. The estimates of the effective
204 reproduction numbers and their 95% credible bands and daily laboratory-confirmed cases in the
205 respective regions are shown.

206 The Thailand geographic spread maps were created using the Quantum Geographic
207 Information System (QGIS). The data were separated into five epidemic stages (A-E). After
208 that, each dataset was plotted geographically using QGIS.

209 The state and local quarantine cases from the daily confirmed cases were excluded when
210 producing the reproduction number, the Thailand demographic maps, and the characteristics of
211 daily new confirmed COVID-19 cases to highlight local transmission of the disease. The state
212 and local quarantine cases only appear only in the epidemic curves.

213 **Results and Discussion**

214 **Data characteristics**

215 The characteristics of new daily confirmed COVID-19 cases across the five epidemic
216 stages in Thailand are shown in Table 1. The average daily number of confirmed cases was
217 highest during the Intervention I stage (1739). In the Intervention II stage, the average daily
218 number of confirmed cases declined to 967. Table 1 shows that most of the cases were in the age
219 groups 20-29 years and 30-39 years, and there was no apparent association with sex.

220

221

222

223

224 **Table 1. Characteristics of daily new confirmed COVID-19 cases across the five epidemic**
 225 **stages in Thailand.**

Characteristics	COVID-19 epidemic stages					Total
	Early	Spreading	Intervention I	Intervention II	Easing	
	12 Jan 2020 - 5 Mar 2020	6 Mar 2020 - 14 Mar 2020	15 Mar 2020 - 2 Apr 2020	3 Apr 2020 - 2 May 2020	3 May 2020 - 31 July 2020	
Total	46	35	1793	967	31	2872
Sex (%)						
Male	26 (57)	17 (49)	1024 (57)	442 (46)	17 (55)	1526 (53)
Female	20 (43)	18 (51)	769 (43)	525 (54)	14 (45)	1346 (47)
Age group (%)						
0-19	3 (7)	2 (6)	69 (4)	74 (8)	3 (10)	151 (5)
20-29	9 (20)	8 (23)	488 (27)	227 (23)	7 (23)	739 (26)
30-39	12 (26)	15 (43)	451 (25)	226 (23)	4 (13)	708 (25)
40-49	4 (9)	8 (23)	332 (19)	183 (19)	9 (29)	536 (19)
50-59	5 (11)	1 (3)	249 (14)	140 (14)	6 (19)	401 (14)
60-69	9 (10)	1 (3)	132 (7)	72 (7)	0 (0)	214 (7)
70-79	4 (9)	0 (0)	51 (3)	26 (3)	1 (3)	82 (3)
≥ 80	0 (0)	0 (0)	11 (1)	12 (1)	1 (3)	24 (1)
N/A			10 (1)	7 (1)		17 (1)
Tested population	N/A	N/A	N/A	149875	381747	531622

226 **Geographic spread and new confirmed cases**

227 This section reports Thailand's geographic information for the average daily number of
228 confirmed cases. Fig 3 shows how COVID-19 spread across the country in five epidemic stages.
229 In the Early stage, the COVID-19 was mostly limited to Bangkok (Fig 3A), in which the average
230 daily number of confirmed cases was less than 1.

231 **Fig 3. Geographic spread of the average daily number of confirmed cases in the five**
232 **epidemic stages of COVID-19 in Thailand. (A) Early stage (B) Spreading stage (C)**
233 **Intervention I stage (D) Intervention II stage (E) Easing stage**

234

235 SARS-CoV-2 started to spread across Bangkok's border during the Spreading stage (Fig
236 3B). The highest average daily number of confirmed cases, found in Bangkok, was less than 10.

237 In the Intervention I stage (Fig 3C), COVID-19 swiftly spread nationwide mainly due to
238 a massive migration back home after the Bangkok shutdown on 22 March 2020. During this
239 stage, the highest average daily number of confirmed cases, found in Bangkok, was 54.83. The
240 average daily number of confirmed cases in Nonthaburi, Phuket, Samutprakan, Chonburi,
241 Pattani, Yala, Chiangmai, Songkhla, and Pathumthani was 5.67, 4.78, 4.44, 2.56, 2.56, 2.22,
242 1.89, 1.39 and 1.22 cases per day, respectively. In contrast, only 14 of 77 provinces had no cases
243 in this epidemic stage.

244 In the Intervention II stage, the public health interventions seemed to be successful, and
245 the infectious rate declined and became stable (Fig 3D). Bangkok had the highest average daily
246 number of confirmed cases (14.79). Only six provinces (Phuket, Yala, Nonthaburi, Chonburi,
247 Samutprakan, and Pattani) had the average daily number of confirmed cases between 1 to 10.

248 Lastly, in the Easing stage, the average daily number of confirmed cases dropped to zero
249 almost nationwide (Fig 3E). The new confirmed cases came from nine provinces: Ang Thong,
250 Bungkan, Chainat, Kamphaengphet, Nan, Pichit, Ranong, Singburi, and Trat.

251

252

253 **Effective reproduction number**

254 The effective reproduction number or R_t is the expected number of secondary subjects
255 infected by a primary subject at day t . It is commonly used to measure the transmission level of
256 infectious disease [15]. In this study, using the framework mentioned in the earlier section, the
257 available data on the confirmed cases at country-level and selected province-level were used to
258 estimate the effective reproduction numbers (R_t 's) and their 95% credible bands, as shown by
259 the red curves and bands, respectively in Fig 4. For the province-level results, we selected two
260 hotspot provinces for the outbreak: Bangkok and Phuket. (Real-time results for Thailand and all
261 available provinces can be found on Thailand COVID-19 R_t Tracker website: [https://thai-](https://thai-covid19.live)
262 [covid19.live](https://thai-covid19.live).) It is important to note that the limitations of the data used in the estimation
263 reflected the reliability of the results. The main limitations were (i) a delay in time at which the
264 cases were recorded and confirmed from the actual onset time of disease; (ii) a considerably
265 small number of confirmed cases, especially at the province level.

266 **Fig 4. The Effective Reproduction Number (R_t) for COVID-19 Outbreak in Thailand (4A),**
267 **Bangkok (4B), and Phuket (4C).**

268

269 The results from Thailand (Fig 4A), Bangkok (Fig 4B), and Phuket (Fig 4C) were similar
270 in overall trends and patterns. More specifically, the results for Thailand and Bangkok were
271 almost identical because most of the confirmed cases in Thailand were from Bangkok,
272 particularly in the Early and Spreading stages. On the other hand, the R_t plot for Phuket in Fig

273 4C seems to be at a higher level with a broader credible band compared to Thailand's and
274 Bangkok's R_t plot. Due to a considerably smaller number of confirmed cases in Phuket, the
275 estimated effective reproductive numbers and its credible band may be less reliable and more
276 conservative than those for Thailand and Bangkok.

277 In the Early stage, the R_t plots for Thailand, Bangkok, and Phuket showed instability
278 (somewhat randomly up and down) with the daily confirmed cases less than 5 cases per day.
279 These unstable or random trends with very few confirmed cases per day were due to the fact that
280 this was the Early stage when people were starting to become infected.

281 In the Spreading stage, all R_t plots in Fig 4 show some steep increasing trends, especially
282 for Thailand and Bangkok. There was a bit of a delay in the increasing trend in the R_t plot for
283 Phuket. Once again, these increasing trends of R_t plots collaborated the fact that this period was
284 the Spreading stage of the disease, in which there was a massive increase in the number of
285 infected cases.

286 In the Intervention I and II stages, all R_t plots showed decreasing trends, supporting the
287 notion that the interventions were effective in preventing the transmission of the disease. More
288 specifically, the R_t plots in the Intervention I stage decreased faster than those in the Intervention
289 II stage. This observation is consistent with the objective of the Intervention I stage, which is to
290 stop and contain the outbreak as fast as possible, whereas the objective of the Intervention II
291 stage was only to keep the outbreak under control.

292 It can be seen that we can use the trend of the R_t plot and the number of daily confirmed
293 cases in order to identify the stages of the disease outbreak. With more accurate and
294 contemporary real-time data, R_t plot can be used as a monitoring and policy-decision-making
295 tool.

296 **The Thai Health care system for COVID-19 patients**

297 The clinical criteria for suspicious cases of COVID-19 in Thailand as of 27 February
298 2020 were: body temperature higher than 37.5°C; cough; rhinorrhea; sore throat; dyspnea or
299 difficulty in breathing; pneumonia of undetermined cause or a cluster of acute respiratory tract
300 infections of undetermined cause. Anosmia was appended to the list of suspect symptoms on 1
301 May 2020.

302 The clinical criteria were considered in conjunction with epidemiologic criteria: (i)
303 association with the active areas of COVID-19 transmission (a history of traveling to the areas,
304 or a family member returning from the areas); (ii) in close contact with international travelers or
305 anyone (especially healthcare-related personnel) who was in close contact with a confirmed case
306 within 14 days before symptom onset.

307 People suspected of having COVID-19 were tested to find SARS-CoV-2 RNA in their
308 clinical specimens. Asymptomatic or symptomatic close contact with a confirmed case of
309 COVID-19 was asked to visit a hospital for a nasopharyngeal-swab test for SARS-CoV-2 RNA.
310 It was mandatory for all SARS-CoV-2 positive patients, regardless of their symptoms, to stay in
311 hospital. People who were asymptomatic or who had mild symptoms were admitted and usually
312 spent 2–7 days in a single isolation room or a cohort ward. Confirmed cases with mild symptoms
313 and comorbidities, or confirmed cases with pneumonia, could not be discharged before full
314 recovery and SARS-CoV-2 negative.

315 Following hospital discharge, they were mandated to stay in a designated hostel, namely
316 "hospital," until 14 days after symptom onset or when their swab results were SARS-CoV-2
317 negative at least two consecutive times.

318 Village Health Volunteer (VHVs) is well-established and became one of the essential
319 factors to help control the COVID-19 outbreak in Thailand. Thai Government manages
320 1,040,000 Village Health Volunteers (VHVs) across the country plus 15,000 public health
321 volunteers in Bangkok.

322 After receiving training, each volunteer looks after 10-15 households, often home to the
323 bedridden, the disabled, and the elderly. VHVs have spread out across the country to promote
324 public health education, deliver medicines to Noncommunicable diseases (NCDs) patients so that
325 they can stay at home, and make reports to public health authorities.

326 In light of the COVID-19 outbreak, VHVs have been a key instrument for promoting
327 related public health policies and providing essential supplies, such as facial masks, face shields,
328 biohazard bags, and alcohol gel. Contributing significantly to the outbreak control, VHVs visited
329 more than 11 million households (3.3 million households from 2 March 2020 to 26 March 2020,
330 and 8 million households from 27 March 2020 to 11 April 2020) to help facilitate case finding
331 efforts.

332 We believe that these measures, imposed for every patient, and VHVs' network
333 contributed greatly to the excellent outcome of handling the COVID-19 outbreak in Thailand.

334 **Effect of Public Health Interventions and Key Events**

335 The super-spreading clusters at the Lumpini boxing stadium on 6 March 2020 and the
336 entertainment venue in Thong Lo on 9 March 2020 were the two most important contributors to
337 spreading COVID-19 in Thailand. The pinnacle of this outbreak, 188 confirmed cases on 22
338 March 2020, was approximately 14 days after the two super-spreading events.

339 In handling the outbreak, two critical executive decisions played a major part during the
340 Intervention I stage to get Thailand past the outbreak peak before the end of the critical period.

341 At the end of the critical period (14 April 2020), the number of daily confirmed cases was 33,
342 whereas 32 cases were at the beginning.

343 The first important decision was enforcement of a set of policies to reduce and prohibit
344 social gatherings. From 15 to 22 March, the Thai Government and Local Governments canceled
345 the Thai New Year (Songkran Festival), in which people gather, roam around, and splash water
346 on each other. The Lumpini boxing stadium, cinemas, sports clubs/complexes, department stores,
347 seated restaurants, and most public-gathering places were closed. The crucial decisions were to:
348 establish an emergency-response mechanism by declaring the COVID-19 as a dangerous
349 communicable disease under the Communicable Diseases Act; declaring the state of emergency;
350 creating the CCSA to respond to the situation promptly; making all communications coherent;
351 gathering all expert advice; fighting the outbreak based on a holistic view of the situation.

352 A couple of surges on the number of daily confirmed cases -- 138 and 141 cases on 29
353 and 30 March respectively and 108 cases (42 cases in the state quarantine) on 8 April 2020 --
354 may be linked to a southern Muslim pilgrimage defying health advisories and took part in the trip
355 amid the outbreak. The official confirmed a spreading of the COVID-19 virus during the
356 religious ceremony in Dawah, Indonesia. On 15 March 2020, the Thai Government started
357 searching for 132 high COVID-19 infectious risk people returning from Dawah. This search was
358 approximately 14 days before the surges on 29 and 30 March 2020. On 6 April 2020, a group of
359 42 Thais returned from Dawah, and a spike of 108 cases was documented on 8 April 2020.

360 In the Intervention II stage, policies to control the transmission route (nationwide curfew;
361 banning of all international flights and mandatory state quarantine for all in-bound passengers)
362 were introduced to reduce the frequency of contact and prevent SARS-CoV-2 from spreading to
363 Thailand. At the end of the Intervention II stage, the number of daily confirmed cases was stable

364 and very low. After Thailand had the number of daily confirmed cases below 10 cases for seven
365 consecutive days, the Thai Government announced the Easing stage and began relaxing
366 restrictions imposed during the Intervention I and II stages.

367 As a positive side-effect, the changes in human behavior (awareness in handwashing,
368 facial mask-wearing, and social distancing) during the COVID-19 outbreak may contribute to the
369 decreased transmission of other respiratory tract infections, such as influenza [9].

370 **Easing periods**

371 After the number of daily confirmed cases was lower than 10 cases for seven consecutive
372 days, the Thai Government started to relax the public health policies.

373 The Easing stage is from 3 May 2020 to 31 July 2020, where the restrictions
374 corresponding to the lower infectious risk were lifted and observed for 14 days before
375 proceeding to the next level, which eased the policies related to a higher infectious risk. The
376 Easing stage was classified into five easing phases, and Thailand was in the fifth easing phase by
377 the end of the first wave.

378 Fig 5 showed five easing phases. The first Easing phase had locally confirmed cases
379 almost every day, and the highest number of cases was on 11 May 2020, which had 6 cases. The
380 average of the locally confirmed cases in the first and second Easing phases were 1.57 and 0.6
381 cases, respectively. It can be seen that the locally confirmed cases declined to zero in the late of
382 the second Easing phase. The number of locally confirmed cases was never reported again
383 during the third, fourth, and fifth Easing phases.

384 **Fig 5. Thailand's daily confirmed cases during the Easing stage (3 May to 31 July 2020).**

385

386 Thai Government declared an easing state in five phases starting from 3 May to 31 July
 387 2020 [16]. Each phase consisted of activities [16] shown in Table 2. The results showed that each
 388 easing phase had a different risk score, scale from 1 to 9, modified from the Texas Medical
 389 Association [17]. The average risk scores ranged from 3.44 to 7.75, depending on the activities
 390 in each phase. The Easing phase I had the lowest risk scores followed by phases II, III, IV, and
 391 V.

392

393 **Table 2. Easing phases, activities and risk scores for COVID-19 in Thailand**

Easing Phase	Phase I	Phase II	Phase III	Phase IV	Phase V
Start Date	3 May 2020	17 May 2020	1 June 2020	15 June 2020	29 June 2020
Curfew	22:00-04:00	23:00-03:00		No curfew	
Economic and lifestyle recommendations (risk score)	-Opening of restaurants (takeaway only) (2) -Opening essential stores in a mall (5) -Grocery shopping (3) -Opening of hair salons or barber shops (only haircut and hair wash, appointment only) (4)	-Opening of restaurants (excluding pubs and bars) (4) -Opening of malls (some departments until 20:00) (5) -Opening of all retail and wholesale stores (4) -Opening welfare centers (stay overnight) (6) -Movie crews (≤ 50 members) (5) -Opening convention centers (limited participants) (5)	-Opening of malls (5) -Opening convention centers ($< 20,000$ m ² areas) (5) -Opening of amulet shops and fairs (5) -Opening of salons and barbershops (appointment and no waiting in situ) (5) -Opening of child development centers (6)	-Opening of concerts and cinemas (9) -Opening of restaurants with alcohol allowed (except pubs, bars, and karaoke shops) (8) -Opening of daycare and welfare centers (6) -Movie crews (≤ 150 members and 50 observers) (6) -Opening of game centers (7)	-The full opening of educational institutions and all buildings (6) -Full opening pubs, bars and karaoke shops (9) -Opening game centers and internet cafes (7)
Exercising	-Unlocking	-Opening of	-Opening of	-Allowance of	-Opening

<p>and Health recommendations (risk score)</p>	<p>access to health services previously restricted during the peak of the outbreak (i.e., elective surgery, non-urgent follow-up visit) (4) -Opening of golf courses (3) -Outdoor stadium opening (3) -Opening of public parks and stadiums (3) -Opening of pet shops (4)</p>	<p>beauty clinics (no face service) (7) -Selective opening of fitness centers (outside malls) (6) -Selective opening of indoor stadiums (7) -Opening libraries and museums (4)</p>	<p>beauty clinics/salons and tattooing/piercing shops (7) -Opening of health establishments (no sauna) (7) -Opening of the fitness center (no sauna) (8) -Opening of boxing gyms (9) -Opening of sports training stadiums (9) -Opening of bowling lanes and skateboard/roller blade playgrounds (8) -Opening of dance schools (7) -Opening of pools and waterparks (7) -Opening of cinemas and theaters (≤ 200 patrons) (7) -Opening of zoos (6)</p>	<p>SPA, Thai massages (except for massage parlors) (8) -Allowance of outdoor group exercises (8) -Opening of waterparks, theme parks and playgrounds (except for hi-touch amusements) (8) -Allowance of sports competitions in stadiums with no spectators (7)</p>	<p>massage parlors (9)</p>
<p>Others</p>	<p>-No teaching or gathering at any educational institution. -No air transportation -State quarantine for foreign entrants</p>	<p>-Close cattle and fish fight stadiums and similar venues</p>	<p>-Allowing teaching at an educational institution with 15 days limit</p>	<p>-The full opening of educational institutions -Regulations for public transportation across provinces -Relating</p>	

				persons must conform strictly to preventive measures	
Average risk score	3.44	5.3	6.73	7.44	7.75

394

395 **Economic Impacts**

396 In retrospect of some previous studies comparing the effect of the different spectrum of
 397 intensity of interventions on different countries, it would seem that Thailand has chosen the right
 398 approach of adopting the most vigorous interventions as soon as possible to quickly control the
 399 COVID-19 epidemic before alleviating them after having the disease under control. However, at
 400 what cost Thailand paid for it, as far as the economy is concerned. Our discussion here meant to
 401 scratch the surface on this question.

402 To understand the trade-off of the two different COVID-19 handling approaches on
 403 health and economics, we select two neighbors in Scandinavian, Sweden, and Denmark, as
 404 subjects of our analysis. On the one hand, Sweden chose to intervene lightly to avoid severe
 405 impacts on the economy and believe that eventually, the herd immunity will kick in and stop the
 406 spreading. There was almost no lockdown nor closure of business, restaurants, and bars in
 407 Sweden. On the other hand, Denmark adopted all necessary measures to contain the outbreak at
 408 all costs. Almost all businesses and other places are closed down, and social distancing is applied
 409 wherever possible.

410 After all, we observe that these two approaches yield a similar projection on the Gross
 411 Domestic Product (GDP) as shown in Table 3. Although Sweden's economics seem to be slightly

412 better than Denmark in the first quarter of 2020, 0.1 percent versus -2.1 percent, respectively, the
 413 International Money Fund (IMF) predicts the GDP of Sweden and Denmark for the entire 2020
 414 as -6.8 and -6.5 percent respectively. In addition, IMF predicts the unemployment rate, another
 415 key measure on economics, of Sweden and Denmark for the entire 2020 as 10.1 (increased from
 416 6.8% in 2019) and 6.5 (increased from 5% in 2019) percent, respectively.

417

418 **Table 3. Gross Domestic Product and unemployment rate in Sweden and Denmark**

Country	Gross Domestic Product (%)						Unemployments (%)**		
	Present		Projections				Present	Projections	
	2019	2020Q1 *	2020Q2 *	2020Q3 *	2020Q4 *	2020	2019	2020	2021
Sweden	1.2	0.1	-9.1	1.9	1.7	-6.8	6.8	10.1	8.9
Denmark	2.4	-2.1	-8.6	3.9	3.0	-6.5	5.0	6.5	6.0
Thailand	2.4	N/A	N/A	N/A	N/A	-6.7	1.1	1.1	1.1

419 Sources: IMF[18], *Europa[19]

420 ** National definitions of unemployment may differ.

421

422 However, as reported in Table 4 the impacts on public health of the two approaches are
 423 enormous. As of 31 July 2020, the total number of confirmed COVID-19 infected cases in
 424 Sweden and Denmark are 7,931.27 and 2,369.57 cases per million populations (more than 3.3
 425 times difference). The total number of deaths due to coronavirus in Sweden is 568.26 deaths per
 426 million population, whereas the death in Denmark on the same day is 106.18 deaths per million.
 427 Essentially, Sweden has more than five times higher mortality rate than Denmark. In the short
 428 run, the strict public intervention policies seem to be in favor; however, the impacts, in the long
 429 run, will remain to be seen.

430

431 **Table 4. Infected cases and deaths caused by COVID-19 in Sweden, Denmark and**
432 **Thailand on 31 July 2020**

Country	Infected cases* (per million people)	Deaths** (per million people)
Sweden	7931.27	568.26
Denmark	2369.57	106.18
Thailand	47.42	0.83

433 Sources: *Our world in data: Total confirmed COVID-19 cases per million people [21]

434 **Our world in data: Total confirmed COVID-19 deaths per million people [20]

435

436 Thailand also strictly practiced social distancing and lockdown, and the IMF predicts the
437 GDP of the entire 2020 to -6.7 percent. As of 31 July 2020, the total number of confirmed
438 COVID-19 infected cases in Thailand is 47.42 cases per million populations. Moreover, the total
439 confirmed COVID-19 deaths on 31 July 2020 is 0.83 deaths per million people, which is among
440 the world's lowest mortality rates. The interesting question is, while Thailand seems to be doing
441 very well with the lockdown policy, how the global pandemic situation affects some key sectors,
442 such as tourism, which is among the main contributions to Thailand's GDP, remains to be
443 answered, especially if the second wave of COVID-19 hit Thailand.

444 In essence, thus far, both approaches to handling the COVID-19 outbreak seem to bear
445 similar impacts on the economy; however, adopting more potent public health interventions
446 leads to more survival. Please note that even though we use two key economic indicators (GDP
447 and unemployment rate) to quantify the impacts on the economy briefly, our discussion is not to
448 replace a thorough investigation of the economic impact.

449

450 **Conclusions**

451 Among the top destinations of tourists from Wuhan is Thailand. Thailand was among the
452 first countries outside China to find COVID-19 cases. Nevertheless, Thailand exited the first

453 wave of the COVID-19 outbreak in less than six months, with 3,072 recoveries (about 96.15%)
454 out of 3,195 infectious cases, including stage quarantine cases.

455 We detailed how Thais counteracted the threat of the COVID-19 pandemic and their
456 sacrifices. Apart from the two super-spreading events, as Bangkok was shut down without a
457 national-level plan to handle outward mobilization, a massive migration of labor force back to
458 their hometowns was triggered, spreading COVID-19 nationwide. Nevertheless, at an early stage
459 of the pandemic, Thais responded cooperatively with personal-hygiene and protection guidelines.
460 In the later stage of the pandemic, Thais cooperated enthusiastically with physical distancing and
461 policies disallowing social gatherings. Most of the public and private sectors transitioned to a
462 work-from-home environment. These norms helped to reduce the chances of infection
463 considerably.

464 The Thai Government had a significant role in the initial stage of the crisis. In particular,
465 it established the CCSA to oversee overall problems holistically, facilitate the integration of all
466 related bodies, and ensure consistent and unambiguous communications. Despite unavoidable
467 mistakes (such as its inability to stop the massive migration that happened two weeks after its
468 inception), the CCSA learned from its mistakes, adapted, improved, and became more effective
469 afterward. The Thai Government will continue to have a significant role in managing the
470 pandemic.

471 In terms of observation on the economic impact, trying to intervene slightly can slow
472 down the GDP to decline momentarily. Using herd immunity or lockdown approaches to handle
473 the COVID-19 outbreak seem to bear similar impacts on the economy; however, adopting more
474 potent public health interventions leads to more survival.

475 If the second wave of the COVID-19 outbreak hits Thailand, the Thai Government needs
476 practical tools for preventive policy planning. These tools should be data-driven, in real-time,
477 and aid decision-making rapidly. We used some of these data-driven tools to form visual and
478 measurement analytics (Fig 3, Fig 4, and Table 2). We plan to utilize these tools or develop new
479 data-driven tools with good predictive power to help tackle a second outbreak of COVID-19 in
480 Thailand.

481

482 **Funding**

483 This study was supported by The National Research Council of Thailand and the Center
484 of Excellence in Clinical Virology, Chulalongkorn University & Hospital, Bangkok, Thailand

485

486 **References**

487

- 488 1. Pan A, Liu L, Wang C, Guo H, Hao X, Wang Q. et al. Association of Public Health
489 Interventions With the Epidemiology of the COVID-19 Outbreak in Wuhan, China
490 [published online ahead of print, 2020 Apr 10]. JAMA. 2020;323(19):1-9.
491 doi:10.1001/jama.2020.6130. PMID: 32275295
- 492 2. World Health Organization. Naming the coronavirus disease (COVID-19) and the virus
493 that causes it. [cited 2020 Jul 30]. Available from:
494 [https://www.who.int/emergencies/diseases/novel-coronavirus-2019/technical-
495 guidance/naming-the-coronavirus-disease-\(covid-2019\)-and-the-virus-that-causes-it](https://www.who.int/emergencies/diseases/novel-coronavirus-2019/technical-guidance/naming-the-coronavirus-disease-(covid-2019)-and-the-virus-that-causes-it).
- 496 3. World Health Organization. Coronavirus disease 2019 (COVID-19) situation report-51
497 [Internet]. 2020 Mar [cited 2020 Jul 30]. Available from:
498 [https://www.who.int/docs/default-source/coronaviruse/situation-reports/20200311-sitrep-
499 51-covid-19.pdf?sfvrsn=1ba62e57_10](https://www.who.int/docs/default-source/coronaviruse/situation-reports/20200311-sitrep-51-covid-19.pdf?sfvrsn=1ba62e57_10)

- 500 4. World Health Organization. Coronavirus disease (COVID-19) situation reports [Internet].
501 World Health Organization. 2020 [cited 2020 Jul 30]. Available from:
502 <https://www.who.int/emergencies/diseases/novel-coronavirus-2019/situation-reports/>
- 503 5. PEMANDU Associates. The global COVID-19 index (GCI) - Global dashboard [Internet].
504 2020 [cited 2020 Jul 31]. Available from: <https://covid19.pemandu.org/#main>
- 505 6. Wipatayotin A. Thailand to be star player in Covid success story [Internet]. Bangkok Post.
506 2020 [cited 2020 Jul 30]. Available from:
507 [https://www.bangkokpost.com/thailand/general/1955827/thailand-to-be-star-player-in-](https://www.bangkokpost.com/thailand/general/1955827/thailand-to-be-star-player-in-covid-success-story-doco)
508 [covid-success-story-doco](https://www.bangkokpost.com/thailand/general/1955827/thailand-to-be-star-player-in-covid-success-story-doco)
- 509 7. The World Health Organization. Disease Outbreak News. Novel Coronavirus – Thailand
510 (ex-China). [https://www.who.int/csr/don/14-january-2020-novel-coronavirus-thailand-ex-](https://www.who.int/csr/don/14-january-2020-novel-coronavirus-thailand-ex-china/en/#:~:text=On%2013%20January%202020%2C%20the,Wuhan%2C%20Hubei%20Province%2C%20China.)
511 [china/en/#:~:text=On%2013%20January%202020%2C%20the,Wuhan%2C%20Hubei%2](https://www.who.int/csr/don/14-january-2020-novel-coronavirus-thailand-ex-china/en/#:~:text=On%2013%20January%202020%2C%20the,Wuhan%2C%20Hubei%20Province%2C%20China.)
512 [0Province%2C%20China.](https://www.who.int/csr/don/14-january-2020-novel-coronavirus-thailand-ex-china/en/#:~:text=On%2013%20January%202020%2C%20the,Wuhan%2C%20Hubei%20Province%2C%20China.)
- 513 8. World Health Organization Thailand. Novel coronavirus (2019-nCoV) situation reports
514 [Internet]. World Health Organization. Bangkok; 2020 [cited 2020 Jul 30]. Available
515 from: <https://www.who.int/thailand/emergencies/novel-coronavirus-2019/situation-reports>
- 516 9. Suntronwong N, Thongpan I, Chuchaona W, Budi Lestari F, Vichaiwattana P, Yorsaeng
517 R, et al. Impact of COVID-19 public health interventions on influenza incidence in
518 Thailand. *Pathog Glob Health*. 2020;00(00):1–3. doi:10.1080/20477724.2020.1777803.
519 PMID: 32521210
- 520 10. World Health Organization. Coronavirus disease (COVID-19) situation report - 193
521 [Internet]. Geneva, Switzerland; 2020 [cited 2020 Aug 14]. Available from:
522 <https://www.who.int/docs/default-source/coronaviruse/situation-reports/20200731-covid->

- 523 19-sitrep-193.pdf?sfvrsn=42a0221d_4
- 524 11. Ministry of Public Health. Coronavirus disease 2019 (COVID-19) Thailand situation
525 report [Internet]. Bangkok; 2020 Jul [cited 2020 Aug 14]. Available from:
526 https://media.thaigov.go.th/uploads/public_img/source/310763-1.pdf
- 527 12. Department of Disease Control of Thailand. Measures under the Communicable Diseases
528 Act B.E. 2558 (2015) to control the Coronavirus Disease 2019 or COVID-19 [Internet].
529 Bangkok; 2020 Mar [cited 2020 Jul 30]. Available from:
530 <https://ddc.moph.go.th/viralpneumonia/eng/index.php>
- 531 13. Pham TQ, Rabaa M, Duong LH, Dang TQ, Tran QD, Quach HL, et al. The first 100 days
532 of SARS-CoV-2 control in Vietnam. *Clin Infect Dis*. 2020;ciaa1130.
533 doi:10.1093/cid/ciaa1130. PMID: 32738143
- 534 14. Centers for Disease Control and Prevention. COVID view summary ending on March 28,
535 2020 [Internet]. Centers for Disease Control and Prevention. 2020 [cited 2020 Jul 30].
536 Available from: [https://www.cdc.gov/coronavirus/2019-ncov/covid-data/covidview/past-](https://www.cdc.gov/coronavirus/2019-ncov/covid-data/covidview/past-reports/04032020.html)
537 [reports/04032020.html](https://www.cdc.gov/coronavirus/2019-ncov/covid-data/covidview/past-reports/04032020.html)
- 538 15. Cori A, Ferguson NM, Fraser C, Cauchemez S. A new framework and software to
539 estimate time-varying reproduction numbers during epidemics. *Am J Epidemiol*.
540 2013;178(9):1505-1512. doi:10.1093/aje/kwt133. PMID: 24043437
- 541 16. Department of Disease Control of Thailand. COVID-19 easing measures [Internet]. 2020
542 [cited 2020 Aug 15]. Available from:
543 https://ddc.moph.go.th/viralpneumonia/gui_covid19_phase.php
- 544 17. Villarreal D. Texas doctors rank (1-9) The risks of catching COVID-19 in these activities
545 [Internet]. Newsweek. 2020. Available from: <https://www.newsweek.com/texas-doctors->

- 546 rank-1-9-risks-catching-covid-19-these-activities-1515790
- 547 18. International Monetary Fund. World economic outlook: The great lockdown [Internet].
548 Washington, DC: International Monetary Fund; 2020. Available from:
549 [https://www.imf.org/en/Publications/WEO/Issues/2020/04/14/World-Economic-Outlook-](https://www.imf.org/en/Publications/WEO/Issues/2020/04/14/World-Economic-Outlook-April-2020-The-Great-Lockdown-49306)
550 [April-2020-The-Great-Lockdown-49306](https://www.imf.org/en/Publications/WEO/Issues/2020/04/14/World-Economic-Outlook-April-2020-The-Great-Lockdown-49306)
- 551 19. European Commission. European economic forecast: Summer 2020 (Interim). [Internet].
552 Luxembourg: European Union; 2020. Available from:
553 https://ec.europa.eu/info/sites/info/files/economy-finance/ip132_en.pdf
- 554 20. Oxford Martin School, University of Oxford. Total confirmed COVID-19 deaths per
555 million people, Jul 31, 2020 [Internet]. Creative Commons BY. 2020 [cited 2020 Aug 14].
556 Available from: [https://ourworldindata.org/grapher/total-covid-deaths-per-](https://ourworldindata.org/grapher/total-covid-deaths-per-million?year=2020-07-31)
557 [million?year=2020-07-31](https://ourworldindata.org/grapher/total-covid-deaths-per-million?year=2020-07-31)
- 558 21. Oxford Martin School, University of Oxford. Total confirmed COVID-19 cases per
559 million people, Jul 31, 2020 [Internet]. Creative Commons BY. 2020 [cited 2020 Aug 14].
560 Available from: [https://ourworldindata.org/grapher/total-confirmed-cases-of-covid-19-](https://ourworldindata.org/grapher/total-confirmed-cases-of-covid-19-per-million-people?year=2020-07-31)
561 [per-million-people?year=2020-07-31](https://ourworldindata.org/grapher/total-confirmed-cases-of-covid-19-per-million-people?year=2020-07-31)

Figure 1

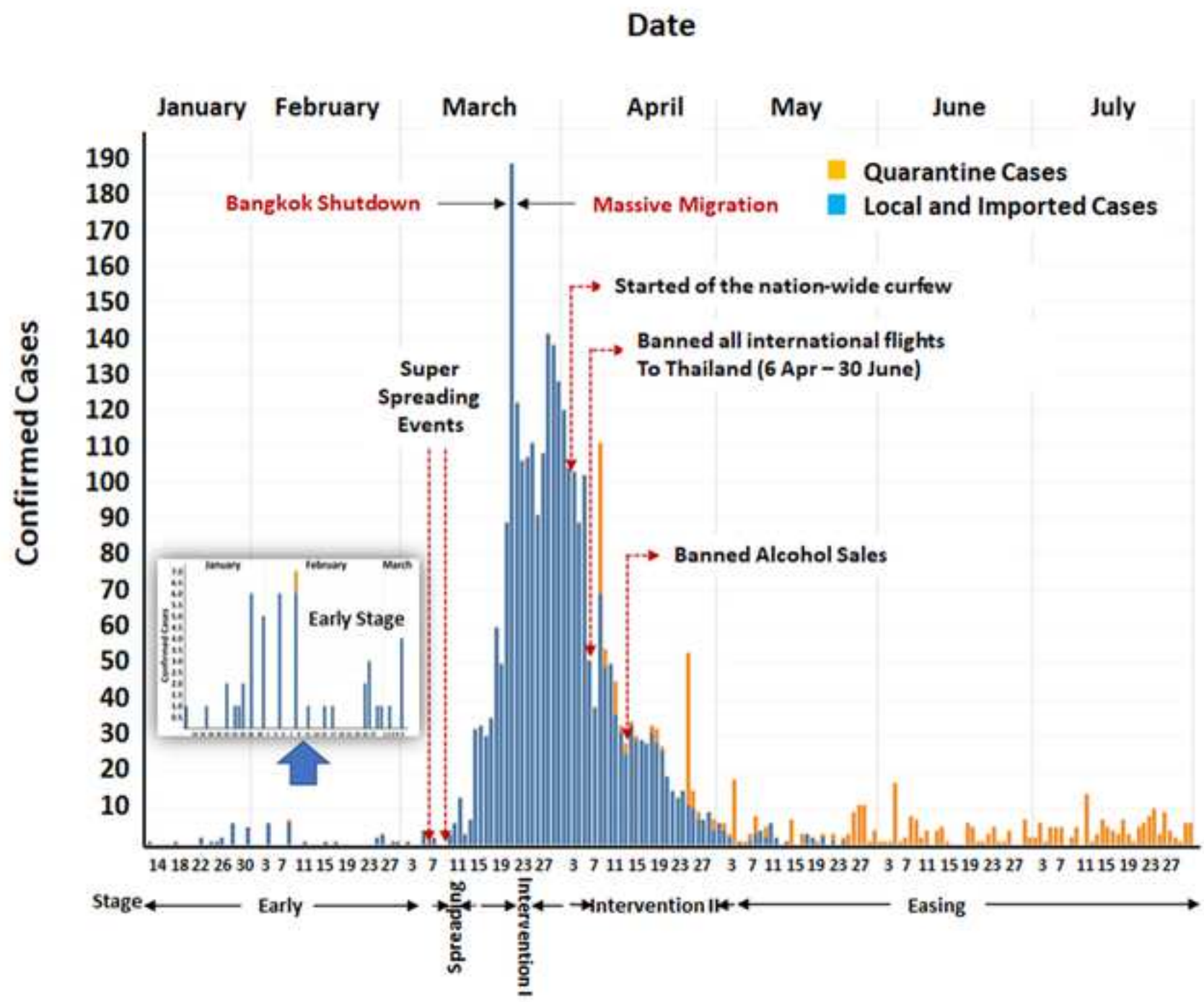


Figure 2

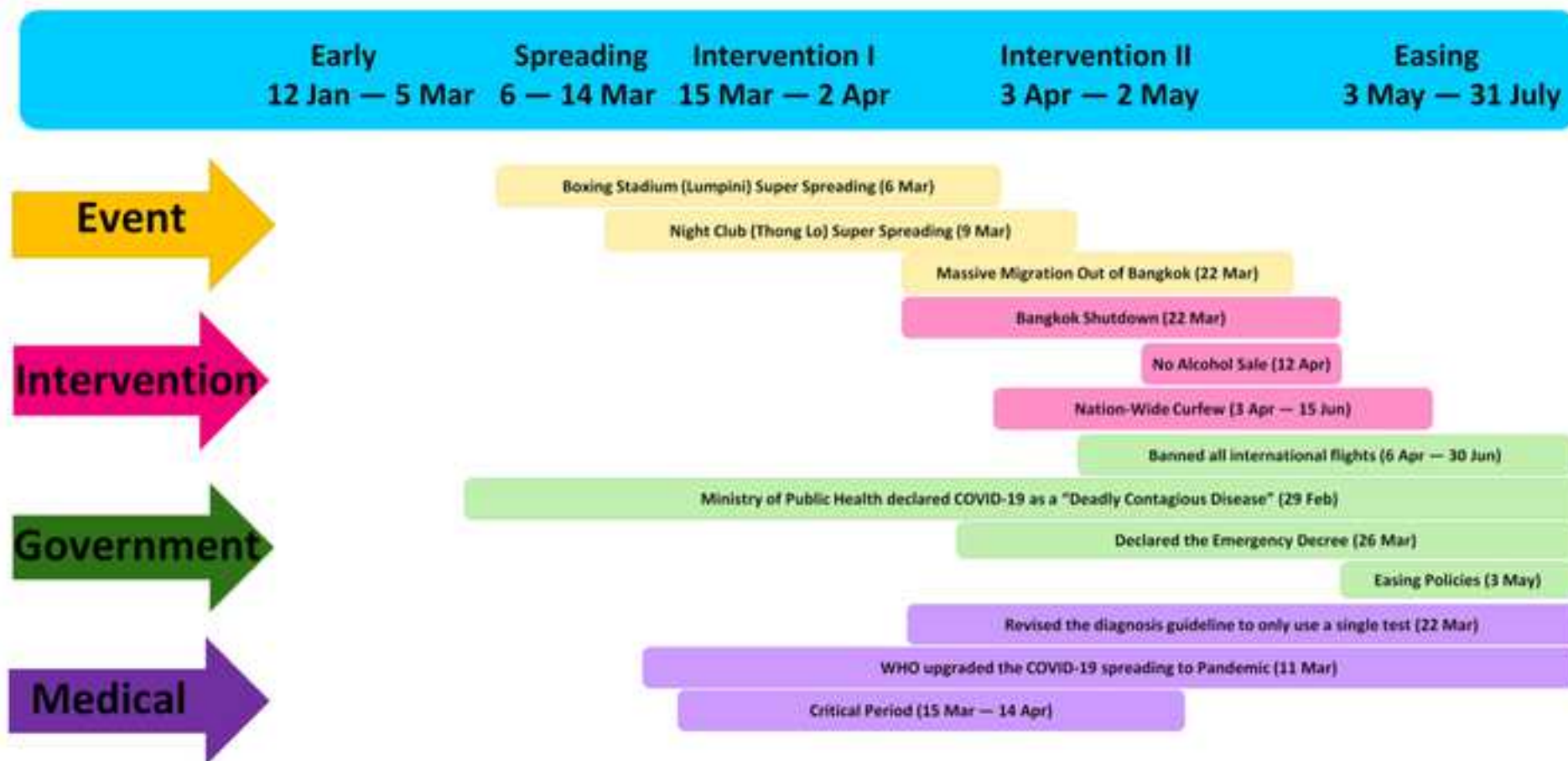


Figure 3

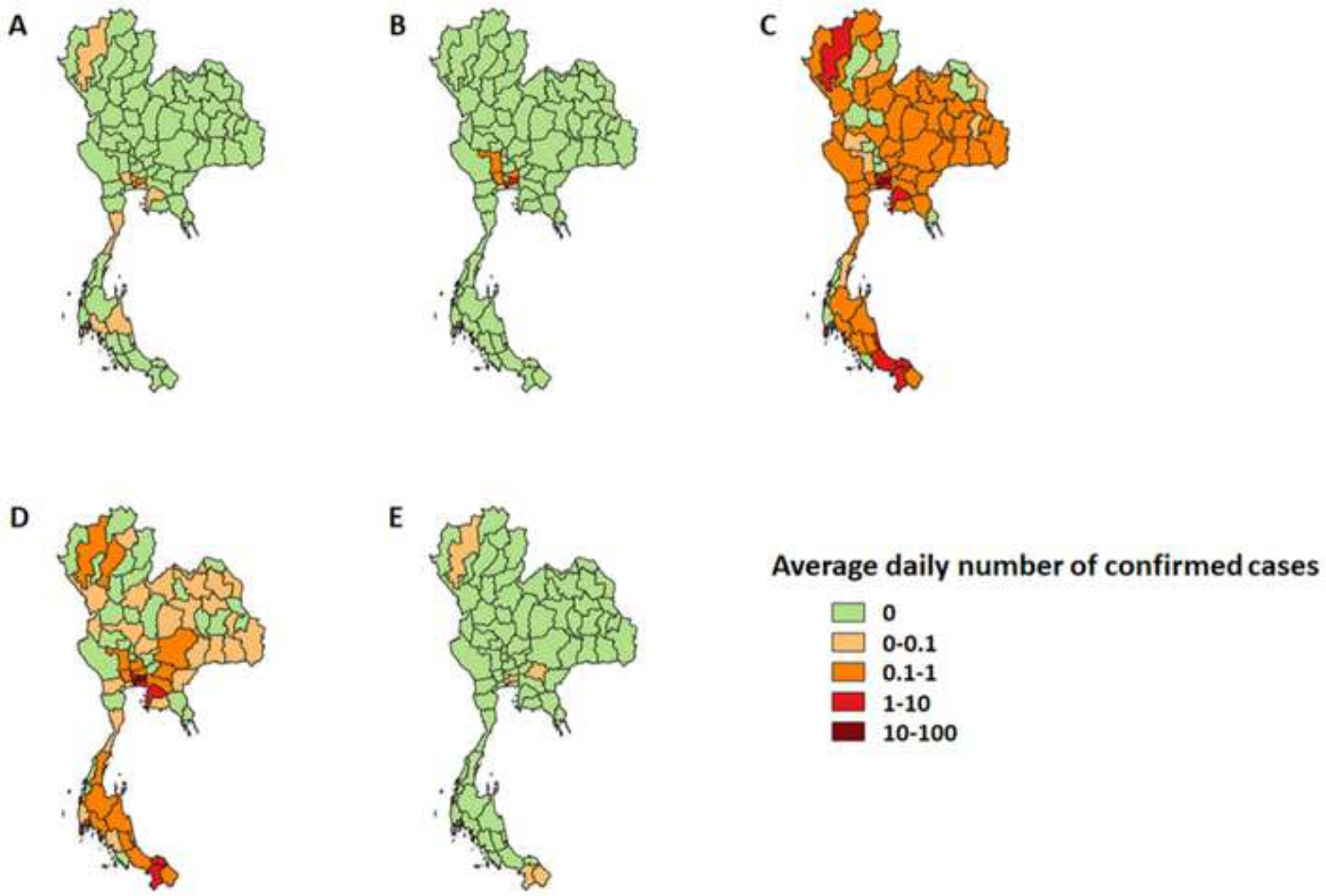


Figure 4

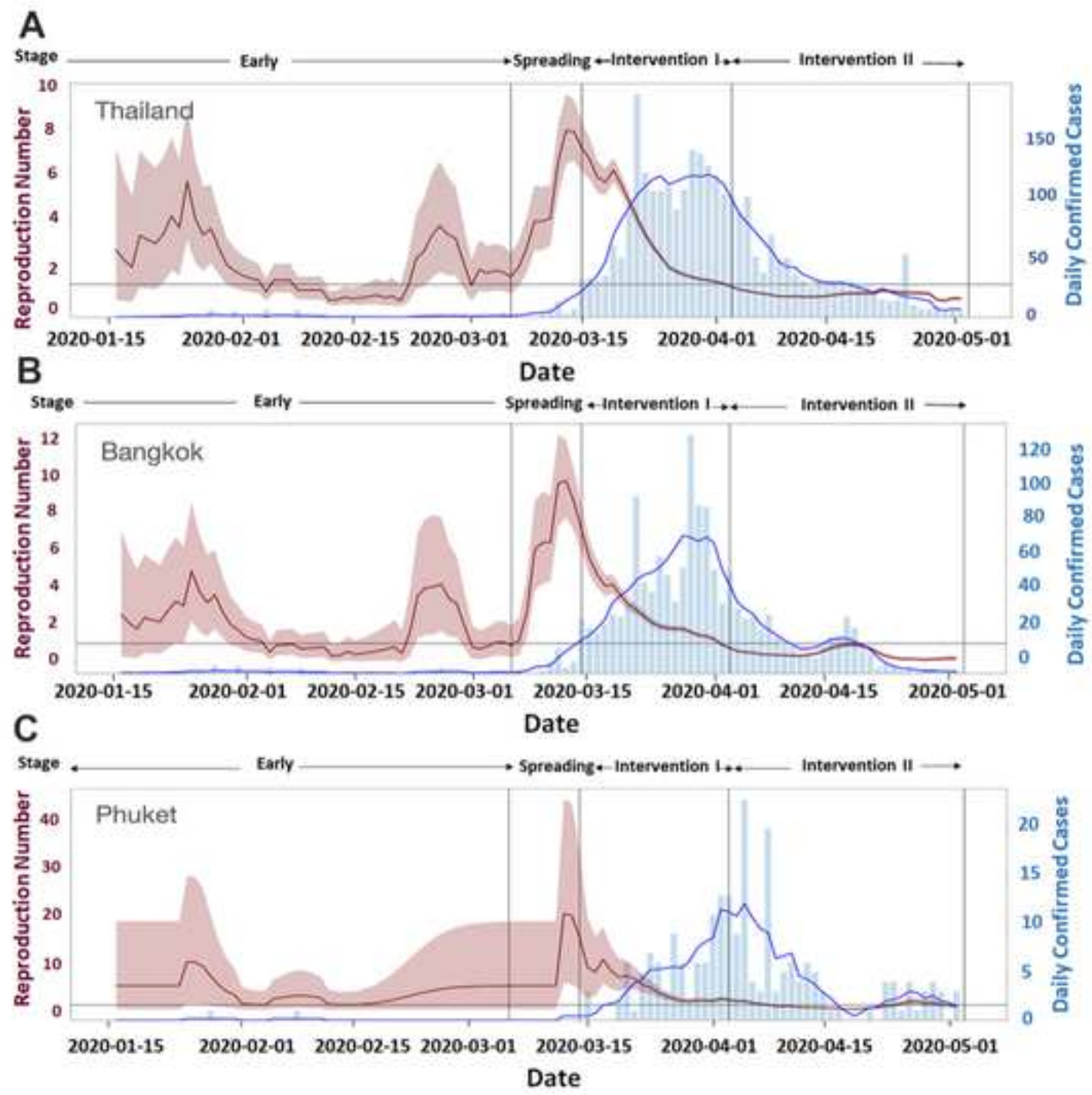


Figure 5

