

First “snap-shot” meta-analysis to estimate the prevalence of serum antibodies to SARS-CoV-2 in humans

Ali Rostami^{1*}, Mahdi Sepidarkish², Mariska Leeflang³, Seyed Mohammad Riahi⁴, Malihe Nourollahpour Shiadeh⁵, Sahar Esfandyari⁶, Ali H Mokdad⁷, Peter J. Hotez⁸, Robin B. Gasser^{9*}

¹ *Infectious Diseases and Tropical Medicine Research Center, Health Research Institute, Babol University of Medical Sciences, Babol, Iran*

² *Department of Epidemiology and Biostatistics, School of Public health, Babol University of Medical Sciences, Babol, Iran*

³ *Department of Clinical Epidemiology, Amsterdam UMC/University of Amsterdam, Amsterdam, Netherlands*

⁴ *Cardiovascular Diseases Research Center, Department of Epidemiology and Biostatistics, Faculty of Health, Birjand University of Medical Sciences, Birjand, Iran*

⁵ *Sexual and Reproductive Health Research Center, Mazandaran University of Medical Sciences, Sari, Iran*

⁶ *Department of Physiology and Biophysics, Gollege of Medicine, University of Illinois at Chicago, Chicago, Illinois, USA*

⁷ *Institute for Health Metrics and Evaluation, University of Washington, Seattle, WA, USA*

⁸ *Texas Children's Hospital Center for Vaccine Development, Department of Pediatrics and Molecular Virology and Microbiology, National School of Tropical Medicine, Baylor College of Medicine, Houston, TX, USA*

⁹ *Department of Veterinary Biosciences, Melbourne Veterinary School, The University of Melbourne, Parkville, Victoria, Australia*

Correspondence to:

Assistant Professor Ali Rostami, Infectious Diseases and Tropical Medicine Research Center, Health Research Institute, Babol University of Medical Sciences, Babol, Iran. E-mail: alirostami1984@gmail.com.

Professor Robin B. Gasser, Department of Veterinary Biosciences, Melbourne Veterinary School, The University of Melbourne, Parkville, Victoria, Australia. E-mail: robinbg@unimelb.edu.au.

Abstract

Background: COVID-19 is arguably the number-one public health concern worldwide, and efforts are now escalating to control its spread.

Objective: In this study, we undertake a meta-analysis to estimate the global and regional anti-SARS-CoV-2 seroprevalence rates in humans and assess whether seroprevalence associates with geographical, climatic and socio-demographic factors.

Data sources: We systematically reviewed PubMed, Scopus, Embase, medRxiv and bioRxiv for peer-reviewed articles or preprints (up to 14 August 2020).

Study eligibility criteria: Population-based studies describing prevalence of anti-SARS-CoV-2 serum antibodies in general people.

Participants: general people who were tested for prevalence of anti-SARS-CoV-2 serum antibodies.

Interventions: There were no interventions.

Methods: We used random-effects model to estimate pooled seroprevalence, and then extrapolated these findings to the global population (for 2020). Sub-group and meta-regression analyses explored potential sources of heterogeneity in the data and relationships between seroprevalence and socio-demographic, geographical and climatic factors.

Results: In total, 47 serological studies involving 399,265 people from 23 countries met the inclusion criteria. The pooled seroprevalence of SARS-CoV-2 in general people was estimated at 3.38% (95% CI, 3.05%–3.72%; 15,879/399,265). On a regional basis, we determined seroprevalence estimates of 5.27% (3.97–6.57%) in Northern Europe; 4.41% (2.20–6.61%) in Southern Europe; 4.41% (3.03–5.79%) in North America; 3.17% (1.96–4.38%) in Western Europe; 2.02% (1.56–2.49%) in the Eastern Asia; and 1.45% (0.95–1.94%) in South America. Extrapolating to the 2020 world population, we estimated that 263,565,606 individuals had been exposed or infected with SARS-CoV-2 at the first wave of the pandemic. A significantly higher seroprevalence was related to higher income levels and human development indices, higher geographical latitudes and lower mean environmental temperatures.

Interpretation This study reinforces that SARS-CoV-2 infection is a very rapidly-spreading communicable disease and calls for routine surveys to constantly monitor temporal changes in seroprevalence around the globe.

Keywords: Global seroprevalence, general population, serum antibodies, SARS-CoV-2/COVID-19, meta-analysis, subgroup analyses

Introduction

COVID-19, a severe, acute respiratory syndrome caused by the coronavirus SARS-CoV-2, was identified, for first time, in December, 2019, in Wuhan, China [1, 2]. and, within months, spread to most nations of the world [3]. By 16 August 2020, this pandemic disease was affecting people in 213 countries and territories, with ~ 21 million laboratory-confirmed cases and ~ 800,000 deaths reported globally [4]. The diagnosis and management of COVID-19 is based on the detection of SARS-CoV-2 in nasopharyngeal swabs from patients presenting with clinical signs (including fever, dry cough and/or shortness of breath), or in suspected persons, by reverse transcription-polymerase chain reaction (RT-PCR) [5, 6]. Since the manifestation of SARS-CoV-2 infection ranges from asymptomatic to fatal, epidemiological surveillance of confirmed COVID-19 cases might not be representative for a particular community [7, 8]. Although RT-PCR is presently considered a “gold standard” for the diagnosis of SARS-CoV-2 infection [5], a significant number of subclinical and asymptomatic, infected individuals are likely to remain undetected. Therefore, it is plausible or likely that the actual number of people exposed to, or infected with, is underestimated [7-9]. Serological screening represents a critical adjunct to PCR-based detection/diagnosis and is a key tool to evaluate the cumulative prevalence of SARS-CoV-2 infection, and to monitor seroconversion [10] and seroreversion [11, 12] in individuals and a community, in order to gain knowledge and understanding of the dynamics of specific antibody responses during and after the spread of the virus and, if undertaken routinely, to inform health authorities, politicians and policy makers about seroprevalence at any given stage during an epidemic [13, 14]. The prevalence of specific serum antibodies (IgG or IgM) against SARS-CoV-2 can provide a sound indication of exposure to SARS-CoV-2 in a population [7, 9]. Due to the persistence of antibodies to SARS-CoV-2 (in particular IgG) after viral clearance [7], it is expected that serological monitoring and surveillance are providing highly relevant data sets to estimate the cumulative prevalence of SARS-CoV-2 infection/exposure in a population [7, 15], and may even indicate the immune status of individuals or populations [8, 9].

Several commercial and in-house immunoassays are being used for the detection of IgM and/or IgG antibodies to SARS-CoV-2; these are mainly enzyme-linked immunosorbent assays (ELISAs), chemiluminescence immunoassays (CLIAs) or lateral flow assays (LFIsAs) [16, 17]. The diagnostic sensitivity and specificity of these methods vary, and depend on the use of recombinant or purified protein antigen (e.g., spike (S), envelope (E), membrane (M), nucleocapsid (N) or receptor binding domain (RBD) proteins), and the rigor of assay optimization [18, 19].

In past weeks, sero-epidemiological studies have been reported from a number of countries most affected by COVID-19, including Brazil, China, France, Germany, Iran, Italy, Spain, England and the USA [9, 20-27]. Although the pandemic is still spreading, it is crucial that a rapid and thorough analysis be undertaken to estimate global seroprevalence at moment in times. In this study, six months after the commencement of the pandemic, we undertake a meta-analysis to estimate the global and regional seroprevalences of SARS-CoV-2 in the general population, and assess whether geographical, climatic and socio-demographic factors impact on seroprevalence.

Methods

Search strategy and selection criteria

This study followed the Preferred Reporting Items for Systematic Reviews and Meta-Analyses (PRISMA) guidelines (cf. Figure 1). We performed a systematic literature search in PubMed, Scopus, Embase, medRxiv and bioRxiv on August, 2020 using the following terms: “SARS-CoV-2”, “COVID-19”, “coronavirus”, “antibody”, “ELISA”, “seroprevalence”, and “population”. Additional related articles were retrieved from Google Scholar and manual review of included papers. All articles were imported to Endnote software X8 (Thompson and Reuters, Philadelphia, PA), and duplicates were removed. Two independent reviewers (A.R., M.S.) screened all titles and abstracts for eligibility. Included were all peer-reviewed population-based studies, preprints, and research reports (published in English) which reported the prevalence of anti-SARS-CoV-2 serum antibodies in a ‘general’ population. We excluded articles if they (1) recruited suspected, confirmed or hospitalised patients; (2) were performed in at-risk population (e.g., health-care workers) or individuals with known diseases (e.g., cancer or dialysis patients); (3) recorded prevalence based on clinical manifestation, computed tomography scan or PCR; (4) were comparative studies of diagnostic methods; (5) were case reports or case studies; (6) were editorials, commentaries, reviews, systematic reviews without original data.

Data extraction and quality assessment

After the screening of published articles for eligibility, a specific form in Microsoft Excel (version 2016; Microsoft Corporation, Redmond, WA) was used to extract relevant data and information from each eligible study. Two authors (A.R. and M.N.S) independently extracted the required data from eligible studies, and two others (M.S. and S.E.) independently verified these data. We resolved inconsistencies by consensus. The following items were extracted from each study (if described): first author; year of publication; country; city; study period; study design; type of serological methods used; sensitivity and specificity of diagnostic methods; number of people screened; number of people seropositive for SARS-CoV-2 antibodies and data regarding to age, sex and race.

All geographical areas (i.e. countries and cities) studied were classified according to ‘Sustainable Development Goal’ (SDG)-regions or sub-regions defined by the United Nations [28]. For each country, we also recorded information on the total numbers of confirmed cases and deaths (up to 15 August 2020) reported by World Health Organization (WHO) [29], World Bank’s income category [30], gross national income per capita [31] and the human development index [HDI] [32]. Furthermore we recorded total global, regional and national populations (both sexes combined) in 2020 estimated by the United Nations [33]. If sample size(s) and the numbers of sero-positive people were specified in studies, we extracted and appraised data for separate regions. We also recorded information on latitude, longitude, mean relative humidity, and mean environmental temperature in geographic regions/subregions during the study period using the database timeanddate.com (weblink: <https://www.timeanddate.com>). The quality of studies included in the meta-analysis was assessed using the Joanna Briggs Institute (JBI) Prevalence Critical Appraisal Tool.[34] Individual articles were assessed as to whether they adequately described: sample collection, recruitment method, study subjects and the setting, number of subjects, information on subjects, results, reliability of results, statistical analysis method(s), subpopulation analysis and confounder adjustment (“yes” or “no” answer). For each study, the number of “yes” answers to these 10 criteria was counted; the higher the number of “yes” answers, the lower the risk of bias in a study.

Meta-analysis

All analyses were performed using Stata statistical software (v.13 Stata Corp., College Station, TX, USA). To conservatively estimate the pooled seroprevalence of SARS-CoV-2 in general people, we used a DerSimonian and Laird random-effects models (REM) [35]. For this purpose, first, we estimated the seroprevalence in individual countries by synthesizing the seroprevalence rates of all studies from the same country, and then calculated the seroprevalences of SARS-CoV-2 for the WHO-defined-regions (if studies were available for at least two countries) by synthesizing the data across individual countries within the same WHO-defined-region. We calculated the pooled seroprevalence rates at a 95% confidence interval (CI) using metaprop command in Stata software. We estimated the amount of heterogeneity using the I^2 statistic, and an I^2 of >75% and a $p < 0.05$ was considered substantial heterogeneity [36]. To obtain the number of people exposed to SARS-CoV-2, we extrapolated our prevalence estimates to the total human population (in 2020) living in countries and regions – according to the UN Population Division [28].

To explore the potential sources of heterogeneity and also effects of socio-demographic, geographical and climatic parameters on seroprevalences of SARS-CoV-2, we undertook several sub-group analyses by REM and as well as random effects meta-regression ecological analyses using the metareg STATA command [37]. These analyses were performed considering SDG-regions, type of serological method used, age, sex, race, country income level, country HDI, latitude, longitude, mean temperature and/or mean relative humidity. To assess the effect of these variables on seroprevalence, we performed random effects meta-regression analyses using the metareg STATA command [37]. Further meta-regression analyses were performed to see whether seroprevalences rate is associated with number of total confirmed or total deaths in countries. Results were statistically significant if the P value was < 0.1 .

Results

Study characteristics

A search of electronic databases yielded a total of 4,912 articles; following the removal of duplicate articles and a review of article titles and abstracts, 133 potentially relevant articles were identified for full-text evaluation (Figure 1). After applying the eligibility criteria, 47 articles met the selection criteria to be included in the quantitative synthesis. These 47 eligible articles contained 107 datasets representing 399,265 people from 23 countries in six SDG-regions. Of these datasets, 74 were from Europe and Northern America, 17 from Latin America and the Caribbean, 13 from Eastern and South-eastern Asia, one from Central and Southern Asia, one from North Africa and Western Asia, and one from Sub-Saharan Africa. We did not identify a published study from Oceania. The characteristics of studies included are given in Supplementary Table 1. The majority of the articles included (44 studies) had a low risk of bias (score: 7-10/10), and only three studies had moderate risk (6/10) of bias (Supplementary Table 2).

Seroprevalence of SARS-CoV-2

This analysis of the 107 datasets selected from the 47 articles showed that 15,879 people from a general population of 399,265 had specific serum antibodies to SARS-CoV-2, indicating a pooled seroprevalence of 3.38% (95% CI, 3.05%–3.72%). The heterogeneity among studies was substantial ($I^2 = 99.4\%$, $P < 0.001$). After extrapolation to the 2020 world population, we estimated that 263,565,606 (237,741,369–289,966,523) individuals were exposed to SARS-CoV-2 (13 July 2020). More detail on the overall and regional seroprevalences and burden of SARS-CoV-2 seropositivity to SARS-CoV-2 is given in Table 1. According to SDG-subregions (for which ≥ 2 countries were represented), seroprevalences

were 5.27% (3.97–6.57%) in Northern Europe; 4.41% (2.20–6.61%) in Southern Europe; 4.41% (3.03–5.79%) in Northern America; 3.17% (1.96–4.38%) in Western Europe; 2.02% (1.56–2.49%) in Eastern Asia; and 1.45% (0.95–1.94%) in South America. Countries with the highest seroprevalences were Iran (22.1%), Sweden (15.02), Chile (10.7%), Switzerland (7.9%), Italy (7.27%), South-Korea (7.5%), Spain (5.0%) and USA (4.4%). Figure 2 shows a geographic information system (GIS) map summarising the seroprevalence estimates of SARS-CoV-2 in the general population in individual countries.

Seroprevalence according to sex, age and population

Of the 47 studies included, 29 reported separate, pooled seroprevalences for males and females. Of 145,368 males and 151,790 females, 6,186 males (5.33%, 4.35–6.31%) and 6,958 females (5.05%, 4.06–6.04) had specific serum antibodies against SARS-CoV-2. Fifteen studies reported pooled seroprevalences for different age groups; subgroup analyses revealed pooled seroprevalences in the general population of 2.28% (1.01–3.56%), 3.22% (1.90–4.55%), 2.98% (1.59–4.36%) and 2.57% (1.39–3.76%) in people of ≤ 19 , 20–49, 50–64 and ≥ 65 years of age, respectively (Table 2).

Of the 47 studies, 36 tested people of all age groups, whereas nine, and two studies tested only adults and children, respectively (Table 2). Subgroup analysis revealed pooled seroprevalences of 2.43% (2.16–2.70%), 5.31% (4.12–6.50%), and 8.76% (7.46–10.06%) in the general population, adults only and children only, respectively (Table 2).

Seroprevalence in relation to serological assay used

Of 47 studies, 18 studies utilised rapid LFIA to detect of specific serum antibodies against SARS-CoV-2, 11 used ELISA, 13 used CLIA, four studies a virus neutralisation assay, and one used a microsphere immunoassay. Thirty-seven studies used commercial kits and 10 employed in-house serological methods. Subgroup analyses, conducted considering the type of serological method used, revealed pooled seroprevalences of 3.95% (3.17–4.74%), 3.53% (2.65–4.40%), 2.73% (2.03–3.42%) and 1.32% (0.90–1.74%) using LFIA, ELISA, CLIA and neutralisation assay, respectively. One study in the USA, which used a microsphere immunoassay indicated a seroprevalence of 12.5% (11.97–13.03%). Subgroup analysis revealed pooled seroprevalences of 3.33% (2.95–3.71%) using commercial and 3.63% (2.79–4.48%) employing in-house assays (Table 2).

Seroprevalence in relation to race

Seven studies (five from the USA, one from England and one from Brazil) had datasets that were stratified according to race. Subgroup analysis revealed pooled seroprevalences of 3.76% (1.43–6.08%); 9.96% (2.95–16.97%); 8.76% (0.01–18.65%); and 5.78% (1.76–9.79%) in white, black, Hispanic and other races (Asian/other), respectively (Table 2). For races in the USA, subgroup analysis revealed pooled seroprevalences of 4.11% (1.45–6.78%); 10.83% (4.81–16.85%); 12.79% (2.33–27.91%); and 5.86% (1.12–10.60%) in white, non-Hispanic; black, non-Hispanic; Hispanic; and other races (Asian/other), respectively.

Relationship between seroprevalence and socio-demographic variables

Thirty-five studies represented countries with high income and very high HDI levels; 11 represented countries with upper-middle income levels and high HDIs; and one country had lower-middle income and medium HDI levels. There was no study from countries with low income and low HDI levels. Subgroup analysis (Table 3), according to income and HDI level, revealed higher seroprevalences in countries with high income (4.44%, 3.77–5.1%) and very high HDI levels (4.37%, 3.71–5.02%) than in countries with upper-middle income

(1.31%, 1.02–1.59%) and high HDI levels (1.35%, 1.06–1.64%). Random-effects meta-regression analyses showed a significant, increasing trend in seroprevalence with increasing income (coefficient $[C] = 3.10e-07$; P -value = 0.09), and HDI ($C = 0.131$; P -value = 0.01) levels (Figure 3A-B).

Relationship between seroprevalence and geographical location or climate

At geographical latitudes of 0–20°, 20–40° and 40–60°, seroprevalences were 2.99% (0.71–5.28%), 2.29% (2.03–2.56%) and 4.68% (3.92–5.43%), respectively; the highest and lowest seroprevalences were at longitudes 60–90° (6.36%, 3.07–9.66%) and $\geq 120^\circ$ (1.63%, 1.01–2.25%). In relation to climate, seroprevalences were 5.48% (3.81–7.87%), 3.41% (2.96–3.85%) and 2.77% (2.01–3.55%) in regions with mean relative humidities of < 60%, 60–80%, and > 80%, respectively. Subgroup analysis indicated that the highest and lowest seroprevalences occurred in climates with mean environmental temperatures of < 7°C (7.87%, 1.54–14.20%) and 19–25°C (0.85%, 0.60–1.11%), respectively (Table 3). There was a significant (coefficient $[C] = 0.0007$; P -value = 0.03), increasing trend in seroprevalence with increasing geographical latitude (Figure 3C), and a non-significant ($C = -0.00008$; P -value = 0.316), decreasing trend with geographical longitude (Supplementary Figure 1A). Furthermore, there was a significant ($C = -0.0017$; P -value = 0.02), decreasing trend in seroprevalence with increasing, mean environmental temperature (Figure 3D) and a non-significant ($C = -0.0006$, P -value = 0.12), decreasing trend with increasing relative humidity (Supplementary Figure 1B).

Association between seroprevalence and confirmed COVID-19 cases (i.e. disease) and death

Meta-regression analyses showed a non-significant, increasing trend in the number confirmed cases ($C = 0.0002$; P -value = 0.921) and mortality ($C = 0.0001$; P -value = 0.640) with increasing seroprevalences (Supplementary Figure 2A-B).

Discussion

Currently, COVID-19 is the number-one public health concern worldwide. Here, we provide a comprehensive review of the seroprevalence of SARS-CoV-2 infection in general population from continents from which peer-reviewed investigations have been published at this time point (20 August 2020). The meta-analysis revealed a pooled seroprevalence of SARS-CoV-2 infection/exposure of 3.38% (95% CI, 3.05%–3.72%) relating to ~ 264 million individuals worldwide at the time of drafting this manuscript. Our findings are in accord with the World Health Organization (WHO) report projecting that 2–3% of the global population may have been infected by the end of the first epidemic wave [38]. Our findings also indicate that ~ 96% of the world's population is still susceptible to COVID-19.

Overall seroprevalence varied markedly among countries and regions, which is attributable to many factors, including in cultural practices, political decision-making, policies, mitigation efforts, health infrastructure and prevention/control measures and/or the effectiveness of their implementation [39, 40]. Subgroup analysis showed higher seroprevalences rates in countries with higher income levels and HDIs. Due to lack of data for many disadvantaged countries, findings need to be interpreted with caution, but possible explanations might include increased urbanisation and population density, higher levels of social interaction and intensity of international travel. Moreover, our analysis did not extend to a time when COVID-19 will accelerate in the Southern Hemisphere, especially in Africa and South America, or in South Asia. Therefore, suggested differences in the impact of COVID-19 due to differing national policies respect to Bacillus Calmette-Guérin (BCG) vaccination of children might not hold with this Southern expansion [39].

No significant gender or age difference in the seroprevalence of SARS-CoV-2 infection/exposure suggests that people of both sexes and all ages are at risk of infection, and that preventive measures should be implemented in the same way for all individuals. An interesting finding was the lower seroprevalence in white people compared with other racial and ethnic minority groups, which is in accordance with previous studies [41-44] reporting that minority groups are being disproportionately impacted by COVID-19. According to the Centers for Disease Control and Prevention (CDC) [45], factors contributing to this disproportionate impact include discrimination in health care, housing, education and finances; communication and language barriers; cultural differences between patients and health care providers; lack of health insurance; increased employment of racial and ethnic minority groups in essential work settings such as healthcare facilities, farms, factories, grocery stores, and public transportation; and living in more crowded family or conditions. In this analysis, we did not attempt to distinguish prevalence rates within different regions of the US or other nations. Doing so might have revealed increased seroprevalence in lower income areas due to the factors mentioned above. Indeed, it was noted that the “blue marble health” concept of poverty-related diseases amongst the poor living in high income nations might apply to COVID-19, just as it does for neglected tropical diseases, tuberculosis and other poverty-related conditions [46, 47].

Regarding the serological tests, our analysis indicated some variation in diagnostic sensitivity (detecting based IgG or total serum antibodies) among the serological assays used in published studies. A recent investigation indicated sensitivity and specificity of 85% and 99% for both IgG and total antibodies [48]. This review showed that similar seroprevalences were established by ELISA (3.9%) and LFIA (3.5%), while lower seroprevalence rates were obtained using CLIA (2.7%) and virus neutralisation (1.3%) assays. Two recent meta-analyses [49, 50] showed that sensitivities were consistently lower for the LFIA (66-80%) assay compared with ELISA (84-93%) and CLIA (90-97%), while a specificity of > 95% was calculated for all methods. Variation in sensitivity could be attributable to differences in the antigens used (i.e. recombinant or purified protein), the antibody conjugate employed and cut-off set for an assay [49, 51]. A Cochrane review indicated that the combination of the detection of IgG and IgM achieved a sensitivity of 30.1% one to 7 days, 72.2% for 8 to 14 days, 91.4% for 15 to 21 days after the onset of symptoms [52]. In present study [22, 25, 53, 54], four studies used virus neutralisation to detect serum antibodies to SARS-CoV-2, all exhibiting a sensitivity and specificity of > 98%. Neutralisation assays are more time consuming to perform (3–5 days) and are carried out in laboratories of a Biosafety Level-3 (BSL-3) [55]; therefore, these assays might be less suited for routine use. One study [56] used a microsphere immunoassay to detect serum antibodies to SARS-CoV-2 and indicated a high seroprevalence (12.5%). Although this method has been approved by the Food and Drug Administration (FDA), results might be interpreted with caution, given that only one study has been published to date.

With respect to geographical locations and climate parameters, we revealed an increasing trend for seroprevalence at higher latitudes and lower mean relative humidity and temperature. This finding is consistent with some previous laboratory, epidemiological and mathematical modelling studies [57-60], showing that environmental temperature and humidity play key roles in the survival and transmission of seasonal respiratory viruses. The highest seroprevalences were recorded at latitudes between 40°N and 56°N, in accordance with a previous study [60] showing substantial community spread of SARS-CoV-2 up to March 2020 in areas located in a narrow band in the 30° N and 50° N “corridor”. The finding of higher seroprevalence rates in areas with a low mean relative humidity and temperature accords with recent epidemiological [60] and laboratory [61] studies of coronavirus survival. Both environmental temperature and humidity are known as critical factors determining

survival and community transmission of SARS-CoV, MERS-CoV and influenza [60, 62, 63]. Processes or mechanisms proposed to be linked to cold temperatures and low humidity include airborne droplet-stabilisation, increased viral replication in the nasopharyngeal mucosa or respiratory epithelium and/or reduced local innate immune responses, as evidenced for other respiratory viruses [57, 60, 64-66].

As the present study represents a first “snap shot” of seroprevalence based on a critical evaluation of published information, it has a number of limitations: First, one limitation is the lack of published, population-based studies from many countries across the globe at this relatively early phase of the pandemic, and some of the studies included here lacked data on sex and age of subjects tested. We hope that these limitations can be addressed over the next months and years, so that future estimates will be more representative of the situation worldwide, so that conclusions might be drawn regarding endemic stability and instability in particular countries and regions. Second, different serological methods/assays (with varying sensitivities and specificities) were employed in different studies, which will have some effect on the accuracy of our global estimate, although subgroup analyses were undertaken to assess a potential effect of the serological methods used. Third, pooled analyses showed significant heterogeneity. As such heterogeneity was expected in meta-analyses of global prevalence estimates [67-69], we explored possible sources of heterogeneity, including geographic region and diagnostic methods. However, we did not find the source of this heterogeneity.

This study reinforces that SARS-CoV-2 infection is a major global health threat and very rapidly-spreading communicable disease, with as the global seroprevalence rising to 3.38% only months after the commencement of the pandemic. Our findings suggest, though, that ~ 96% of the world’s population is still susceptible to infection, which is very alarming. This means that many countries could still face one or more surges in cases and, hence, overwhelm medical systems. We have seen in many locations that hospital beds, intensive care units (ICUs) and ventilators reached capacity. For example, early on, in New York city, the USA had to send mercy ships to handle the surge in need. Therefore, countries should have plans and medical resources in place for future, unexpected waves of COVID-19.

There are indications from many countries that mortality rates for COVID-19 are higher than those officially reported [70-72]. Hence, until a vaccine(s) is (are) available, the focus needs to be on education and prevention and strict quarantine measures. Indeed, universal masks and safe distance are our only means of reducing exposure, infections, disease and deaths. A global meta-analysis [73] showed that applying physical distancing of ≥ 1 m, usage of personal protective equipment (PPE, including a face mask, eye and body protection) results in a substantial reduction in the risk of transmission/infection. However, the lack of preparedness in many countries to control a rapid-spreading, high virulent and pathogenic virus, combined with limited or no biosecurity strategies/policies on how to deal with pandemics in populations, meant that such simple measures were not introduced initially. Our study calls for routine surveys to monitor temporal changes in seroprevalence in a location. In the context of epidemics and pandemics, such surveys might be conducted on a monthly or two-weekly basis to allow authorities to assess the spread of the virus and exposure levels in populations. A global plan is needed to monitor the seroprevalence of SARS-CoV-2 to assist prevention and control efforts. We aim to continue to follow the global seroprevalence situation over time, and to regularly report on trends and changes.

Contributors: A.R., R.B.G and P.J.H conceived the study. A.R., M.S., M.N.S. and S.E. conducted the searches and collected data. A.R., M.S., S.M.R. and M.L. analysed and interpreted the datasets. A.R., A.H.M, R.B.G and P.J.H drafted and edited the manuscript. All authors commented on, or edited drafts and approved the final version of the manuscript.

Declaration of interests: All other authors declare no competing interests.

Acknowledgements: AR's research was supported by the Health Research Institute at the Babol University of Medical Sciences, Babol, Iran. RBG's research is currently supported by the Australian Research Council (ARC), National Health and Medical Research Council (NHMRC) of Australia, Yourgene Health Singapore, and Melbourne Water. Thanks to Constantine E. Gasser for comments on the manuscript

References

- [1] Huang C, Wang Y, Li X, Ren L, Zhao J, Hu Y, et al. Clinical features of patients infected with 2019 novel coronavirus in Wuhan, China. *Lancet* 2020;395:497–506.
- [2] Zhu N, Zhang D, Wang W, Li X, Yang B, Song J, et al. A novel coronavirus from patients with pneumonia in China, 2019. *N Engl J Med* 2020;382:727–33.
- [3] Hick JL, Biddinger PD. Novel coronavirus and old lessons—preparing the health system for the pandemic. *N Engl J Med* 2020;382:e55.
- [4] World Health Organization (WHO). Coronavirus disease 2019 (COVID-19) Situation Report – 209. Available from: https://www.who.int/docs/default-source/coronaviruse/situation-reports/20200816-covid-19-sitrep-209.pdf?sfvrsn=5dde1ca2_2 (accessed August 18, 2020).
- [5] Chan JF-W, Yip CC-Y, To KK-W, Tang TH-C, Wong SC-Y, Leung K-H, et al. Improved molecular diagnosis of COVID-19 by the novel, highly sensitive and specific COVID-19-RdRp/Hel real-time reverse transcription-PCR assay validated in vitro and with clinical specimens. *J Clin Microbiol* 2020;58:e00310–20.
- [6] Ai T, Yang Z, Hou H, Zhan C, Chen C, Lv W, et al. Correlation of chest CT and RT-PCR testing in coronavirus disease 2019 (COVID-19) in China: a report of 1014 cases. *Radiology* 2020;296:E32–E40.
- [7] Xu X, Sun J, Nie S, Li H, Kong Y, Liang M, et al. Seroprevalence of immunoglobulin M and G antibodies against SARS-CoV-2 in China. *Nat Med* 2020;26:1193–5.
- [8] Stringhini S, Wisniak A, Piumatti G, Azman AS, Lauer SA, Baysson H, et al. Seroprevalence of anti-SARS-CoV-2 IgG antibodies in Geneva, Switzerland (SEROCoV-POP): a population-based study. *Lancet* 2020;396:313–9.
- [9] Pollán M, Pérez-Gómez B, Pastor-Barriuso R, Oteo J, Hernán MA, Pérez-Olmeda M, et al. Prevalence of SARS-CoV-2 in Spain (ENE-COVID): a nationwide, population-based seroepidemiological study. *Lancet* 2020;396:535–44.
- [10] Wolff F, Dahma H, Duterme C, Van den Wijngaert S, Vandenberg O, Cotton F, et al. Monitoring antibody response following SARS-CoV-2 infection: Diagnostic efficiency of four automated immunoassays. *Diagn Microbiol Infect Dis* 2020;98:115140.
- [11] Rosado J, Cockram C, Merklings SH, Demeret C, Meola A, Kerneis S, et al. Serological signatures of SARS-CoV-2 infection: Implications for antibody-based diagnostics. medRxiv 2020; published online May 11. DOI:10.1101/2020.05.07.20093963 (preprint).
- [12] Huang AT, Garcia-Carreras B, Hitchings MD, Yang B, Katzelnick LC, Rattigan SM, et al. A systematic review of antibody mediated immunity to coronaviruses: antibody kinetics, correlates of protection, and association of antibody responses with severity of disease. medRxiv 2020; published online April 20. Doi:10.1101/2020.04.14.20065771 (preprint).
- [13] World Health Organization. Global surveillance for COVID-19 disease caused by human infection with the 2019 novel coronavirus. [https://www.who.int/publications-detail/global-surveillance-for-human-infection-with-novel-coronavirus-\(2019-ncov\)](https://www.who.int/publications-detail/global-surveillance-for-human-infection-with-novel-coronavirus-(2019-ncov)) (accessed August 18, 2020).
- [14] Munster VJ, Koopmans M, van Doremalen N, van Riel D, de Wit E. A novel coronavirus emerging in China—key questions for impact assessment. *N Engl J Med* 2020;382:692–4.
- [15] Thomas SN, Altawallbeh G, Zaun C, Pape K, Peters JM, Titcombe PJ, et al. Initial determination of COVID-19 seroprevalence among outpatients and healthcare workers in Minnesota using a novel SARS-CoV-2 total antibody ELISA. 2020. Available at SSRN:

- <https://ssrn.com/abstract=3627313> or <http://dx.doi.org/10.2139/ssrn.3627313> (accessed August 15, 2020).
- [16] Van Elslande J, Houben E, Depypere M, Brackenier A, Desmet S, André E, et al. Diagnostic performance of 7 rapid IgG/IgM antibody tests and the Euroimmun IgA/IgG ELISA in COVID-19 patients. *Clin Microbiol Infect* 2020;26:1082–7.
- [17] Isabel M, Damien G, Benoit K, Hafid D, Soleimani R, Vincenzo C, et al. Evaluation of two automated and three rapid lateral flow immunoassays for the detection of anti-SARS-CoV-2 antibodies. *J Clin Virol* 2020;128:104413.
- [18] Peiris J, Guan Y, Yuen K. Severe acute respiratory syndrome. *Nat Med* 2004;10:S88–S97.
- [19] Jiang S, Hillyer C, Du L. Neutralizing antibodies against SARS-CoV-2 and other human coronaviruses. *Trends Immunol* 2020;41:355–9.
- [20] Hallal P, Hartwig F, Horta B, Victora GD, Silveira M, Struchiner C, et al. Remarkable variability in SARS-CoV-2 antibodies across Brazilian regions: nationwide serological household survey in 27 states. *medRxiv* 2020; published online May 30. DOI:10.1101/2020.05.30.20117531 (preprint).
- [21] Xu X, Sun J, Nie S, Li H, Kong Y, Liang M, et al. Seroprevalence of immunoglobulin M and G antibodies against SARS-CoV-2 in China. *Nat Med* 2020;26:pages1193–5.
- [22] Gallian P, Pastorino B, Morel P, Chiaroni J, Ninove L, de Lamballerie X. Lower prevalence of antibodies neutralizing SARS-CoV-2 in group O French blood donors. *Antiviral Research* 2020;181:104880.
- [23] Fischer B, Knabbe C, Vollmer T. SARS-CoV-2 IgG seroprevalence in blood donors located in three different federal states, Germany, March to June 2020. *Eur Surveill* 2020;25:2001285.
- [24] Shakiba M, Nazari SSH, Mehrabian F, Rezvani SM, Ghasempour Z, Heidarzadeh A. Seroprevalence of COVID-19 virus infection in Guilan province, Iran. *medRxiv* 2020; published online May 1. DOI:10.1101/2020.04.26.20079244 (preprint).
- [25] Percivalle E, Cambiè G, Cassaniti I, Nepita EV, Maserati R, Ferrari A, et al. Prevalence of SARS-CoV-2 specific neutralising antibodies in blood donors from the Lodi Red Zone in Lombardy, Italy, as at 06 April 2020. *Eur Surveill* 2020;25:2001031.
- [26] Ward H, Atchison C, Whitaker M, Ainslie K, Elliott J, Okell L, et al. Antibody prevalence for SARS-CoV-2 following the peak of the pandemic in England: REACT2 study in 100,000 adults. *medRxiv* 2020; published online August 21. DOI:10.1101/2020.08.12.20173690 (preprint).
- [27] Havers FP, Reed C, Lim T, Montgomery JM, Klena JD, Hall AJ, et al. Seroprevalence of antibodies to SARS-CoV-2 in 10 sites in the United States, March 23-May 12, 2020. *JAMA Intern Med* 2020; published online July 21, Doi:10.1001/jamainternmed.2020.4130.
- [28] The sustainable development goals (SDGs) report 2019. Regional groupings. Available from: <https://unstats.un.org/sdgs/report/2019/regional-groups/> (accessed August 15, 2020)..
- [29] World Health Organization (WHO). Coronavirus disease (COVID-19), Situation Report – 198. Available from: https://www.who.int/docs/default-source/coronaviruse/situation-reports/20200805-covid-19-sitrep-198.pdf?sfvrsn=f99d1754_2 (accessed August 18, 2020).
- [30] World Bank Group database. World Bank Country and Lending Groups. Available from: <https://datahelpdesk.worldbank.org/knowledgebase/articles/906519-world-bank-country-and-lending-groups> (accessed August 18, 2020).
- [31] World Bank Group database. Gross national income per capita 2019. Available from: <https://databank.worldbank.org/data/download/GNIPC.pdf> (Accessed August 18, 2020).
- [32] United Nations Development Program. Available from: <http://hdr.undp.org/en/composite/HDI> (accessed August 18, 2020).
- [33] United Nations. Total population (both sexes combined) by region, subregion and country, annually for 1950-2100 (thousands). Available from: <https://population.un.org/wpp/Download/Standard/Population/> (accessed August 15, 2020).
- [34] Munn Z, Moola S, Riitano D, Lisy K. The development of a critical appraisal tool for use in systematic reviews addressing questions of prevalence. *Int J Health Policy Manag* 2014;3:123–8.
- [35] DerSimonian R, Laird N. Meta-analysis in clinical trials. *Control Clin Trials* 1986;7:177–88.

- [36] Higgins JP, Thompson SG. Quantifying heterogeneity in a meta-analysis. *Stat Med* 2002;21:1539–58.
- [37] Harbord RM, Higgins JP. Meta-regression in Stata. *Stata J* 2008;8:493–519.
- [38] World Health Organization (WHO). Coronavirus disease (COVID-2019) press briefing 20 April 2020. Geneva: WHO, 20 Apr 2020. Available from: <https://www.who.int/emergencies/diseases/novel-coronavirus-2019/media-resources/press-briefings#> (accessed August 18, 2020).
- [39] Miller A, Reandelar MJ, Fasciglione K, Roumenova V, Li Y, Otazu GH. Correlation between universal BCG vaccination policy and reduced morbidity and mortality for COVID-19: an epidemiological study. medRxiv 2020; published online March 28. DOI:10.1101/2020.03.24.20042937 (preprint).
- [40] Anderson RM, Heesterbeek H, Klinkenberg D, Hollingsworth TD. How will country-based mitigation measures influence the course of the COVID-19 epidemic? *Lancet* 2020;395:931–4.
- [41] Stokes EK, Zambrano LD, Anderson KN, Marder EP, Raz KM, Felix SEB, et al. Coronavirus Disease 2019 Case Surveillance—United States, January 22–May 30, 2020. *Morb Mortal Wkly Rep* 2020;69:759.
- [42] Killerby ME, Link-Gelles R, Haight SC, Schrodtt CA, England L, Gomes DJ, et al. Characteristics associated with hospitalization among patients with COVID-19—Metropolitan Atlanta, Georgia, March–April 2020. *Morb Mortal Wkly Rep* 2020;69:790.
- [43] Price-Haywood EG, Burton J, Fort D, Seoane L. Hospitalization and mortality among black patients and white patients with Covid-19. *N Engl J Med* 2020;382:2534–43.
- [44] Millett GA, Jones AT, Benkeser D, Baral S, Mercer L, Beyrer C, et al. Assessing differential impacts of COVID-19 on Black communities. *Ann Epidemiol* 2020;47:37–44.
- [45] Centers for Disease Control and Prevention (CDC). Health Equity Considerations and Racial and Ethnic Minority Groups. <https://www.cdc.gov/coronavirus/2019-ncov/community/health-equity/race-ethnicity.html> (accessed August 18, 2020).
- [46] Hotez PJ. Poverty and the Impact of COVID-19: The Blue-Marble Health Approach, **2020**.
- [47] Hotez PJ, Bottazzi ME, Singh SK, Brindley PJ, Kamhawi S. Will COVID-19 become the next neglected tropical disease? *PLoS Negl Trop Dis* 2020;14:e0008271.
- [48] Caini S, Bellerba F, Corso F, Díaz-Basabe A, Natoli G, Paget J, et al. Meta-analysis of diagnostic performance of serological tests for SARS-CoV-2 antibodies up to 25 April 2020 and public health implications. *Eur Surveill* 2020;25:2000980.
- [49] Kontou PI, Braliou GG, Dimou NL, Nikolopoulos G, Bagos PG. Antibody tests in detecting SARS-CoV-2 infection: a meta-analysis. *Diagnostics* 2020;10:319.
- [50] Bastos ML, Tavaziva G, Abidi SK, Campbell JR, Haraoui L-P, Johnston JC, et al. Diagnostic accuracy of serological tests for covid-19: systematic review and meta-analysis. *BMJ* 2020;370:m2516.
- [51] Lee CY-P, Lin RT, Renia L, Ng LF. Serological Approaches for COVID-19: Epidemiologic Perspective on Surveillance and Control. *Front Immunol* 2020;11:879.
- [52] Deeks JJ, Dinnes J, Takwoingi Y, Davenport C, Spijker R, Taylor-Phillips S, et al. Antibody tests for identification of current and past infection with SARS-CoV-2. *Cochrane Database Syst Rev* 2020;25:CD013652.
- [53] Chang L, Hou W, Zhao L, Zhang Y, Wang Y, Wu L, et al. The prevalence of antibodies to SARS-CoV-2 among blood donors in China. medRxiv 2020; published online July 14. Doi:10.1101/2020.07.13.20153106 (preprint).
- [54] Sam I-C, Chong YM, Tan CW, Chan YF. Low post-pandemic wave SARS-CoV-2 seroprevalence in Kuala Lumpur and Selangor, Malaysia. *J Med Virol* 2020; published online August 13. DOI:10.1002/jmv.26426.
- [55] Sethuraman N, Jeremiah SS, Ryo A. Interpreting diagnostic tests for SARS-CoV-2. *JAMA* 2020; published online May 6. DOI:10.1001/jama.2020.8259.
- [56] Rosenberg ES, Tesoriero JM, Rosenthal EM, Chung R, Barranco MA, Styer LM, et al. Cumulative incidence and diagnosis of SARS-CoV-2 infection in New York. medRxiv 2020; published online May 29. DOI:10.1101/2020.05.25.20113050 (preprint).

- [57] Lowen AC, Mubareka S, Steel J, Palese P. Influenza virus transmission is dependent on relative humidity and temperature. *PLoS Pathog* 2007;3:e151.
- [58] Barreca AI, Shimshack JP. Absolute humidity, temperature, and influenza mortality: 30 years of county-level evidence from the United States. *Am J Epidemiol* 2012;176:S114–S22.
- [59] Žuk T, Rakowski F, Radomski JP. Probabilistic model of influenza virus transmissibility at various temperature and humidity conditions. *Comput Biol Chem* 2009;33:339–43.
- [60] Sajadi MM, Habibzadeh P, Vintzileos A, Shokouhi S, Miralles-Wilhelm F, Amoroso A. Temperature, Humidity, and Latitude Analysis to Estimate Potential Spread and Seasonality of Coronavirus Disease 2019 (COVID-19). *JAMA Network Open* 2020;3:e2011834.
- [61] Casanova LM, Jeon S, Rutala WA, Weber DJ, Sobsey MD. Effects of air temperature and relative humidity on coronavirus survival on surfaces. *Appl Environ Microbiol* 2010;76:2712–7.
- [62] Otter J, Donskey C, Yezli S, Douthwaite S, Goldenberg S, Weber D. Transmission of SARS and MERS coronaviruses and influenza virus in healthcare settings: the possible role of dry surface contamination. *J Hosp Infect* 2016;92:235–50.
- [63] Van Doremalen N, Bushmaker T, Munster V. Stability of Middle East respiratory syndrome coronavirus (MERS-CoV) under different environmental conditions. *Eur Surveill* 2013;18:20590.
- [64] Yang W, Marr LC. Dynamics of airborne influenza A viruses indoors and dependence on humidity. *PloS One* 2011;6:e21481.
- [65] Schaffer F, Soergel M, Straube D. Survival of airborne influenza virus: effects of propagating host, relative humidity, and composition of spray fluids. *Arch Virol* 1976;51:263–73.
- [66] Kudo E, Song E, Yockey LJ, Rakib T, Wong PW, Homer RJ, et al. Low ambient humidity impairs barrier function and innate resistance against influenza infection. *Proc Natl Acad Sci* 2019;116:10905–10.
- [67] Veroniki AA, Jackson D, Viechtbauer W, Bender R, Bowden J, Knapp G, et al. Methods to estimate the between-study variance and its uncertainty in meta-analysis. *Res Synth Methods* 2016;7:55–79.
- [68] Kwatra G, Cunnington MC, Merrall E, Adrian PV, Ip M, Klugman KP, et al. Prevalence of maternal colonisation with group B streptococcus: a systematic review and meta-analysis. *Lancet Infect Dis* 2016;16:1076–84.
- [69] Platt L, Easterbrook P, Gower E, McDonald B, Sabin K, McGowan C, et al. Prevalence and burden of HCV co-infection in people living with HIV: a global systematic review and meta-analysis. *Lancet Infect Dis* 2016;16:797–808.
- [70] Burn-Murdoch J, Romei V, Giles C. Global coronavirus death toll could be 60% higher than reported. *Financial Times* April 2020; Available from: <https://www.ft.com/content/6bd88b7d-3386-4543-b2e9-0d5c6fac846c> (accessed August 17, 2020).
- [71] Modi C, Boehm V, Ferraro S, Stein G, Seljak U. How deadly is COVID-19? A rigorous analysis of excess mortality and age-dependent fatality rates in Italy. *medRxiv* 2020; published online May 14. DOI:10.1101/2020.04.15.20067074 (preprint).
- [72] Baud D, Qi X, Nielsen-Saines K, Musso D, Pomar L, Favre G. Real estimates of mortality following COVID-19 infection. *Lancet Infect Dis* 2020;20:773.
- [73] Chu DK, Akl EA, Duda S, Solo K, Yaacoub S, Schünemann HJ, et al. Physical distancing, face masks, and eye protection to prevent person-to-person transmission of SARS-CoV-2 and COVID-19: a systematic review and meta-analysis. *Lancet* 2020;395:1973–87.

Table 1. Global, regional and national pooled prevalence of serum antibodies to SARS-CoV-2 in the general population (results from 47 studies containing 107 datasets performed in 23 countries).

WHO regions/ country	Number datasets	Number of people screened (total)	Number of seropositive people	Pooled seroprevalence % (95% CI)	Estimated global or country's population (2020)	Estimated number of people exposed to SARS-CoV-2
Global	107	399,265	15,879	3.38 (3.05–3.72)	7,794,799,000	263,565,606 (237,741,369–289,966,523)
Europe and northern America	74	272,265	13,109	4.21 (3.52–4.90)	1,116,506,000	47,004,902 (39,301,011–54,708,794)
Northern America	22	51,544	3,146	4.41 (3.03–5.79)	368,870,000	16,267,167 (11,176,761–21,357,573)
United states	22	51,544	3,146	4.41 (3.03–5.79)	331,003,000	14,597,232 (10,029,390–19,165,073)
Western Europe	13	16,933	658	3.17 (1.96–4.38)	196,146,000	6,217,828 (3,844,461–8,591,194)
Belgium	2	7,391	293	3.46 (3.04–3.88)	11,590,000	401,014 (352,336–449,692)
France	5	1,198	30	2.19 (1.20–3.18)	65,274,000	1,429,500 (783,288–2,075,713)
Germany	4	3,806	81	2.23 (0.79–3.67)	83,784,000	1,868,388 (661,893–3,074,872)
Switzerland	1	2,766	219	7.92 (6.94–8.99)	8,655,000	685,476 (860,307–)
Luxembourg	1	1,862	35	1.88 (1.31–2.60)	626,000	11,768,000 (8,200–16,276)
Southern Europe	26	71,478	3,242	4.41 (2.20–6.61)	152,215,000	6,712,681 (3,348,730–10,061,411)
Croatia	2	1,494	19	1.05 (0.56–1.60)	4,105,000	43,102 (22,988–65,680)
Italy	4	2,323	145	7.27 (2.48–11.9)	60,462,000	4,395,587 (1,499,457–7,249,393)
Spain	19	61,075	3,054	5.01 (4.83–5.18)	46,755,000	2,342,425 (2,258,266–2,421,909)
Greece	1	6,586	24	0.36 (0.23–0.54)	10,423,000	37,522 (23,972–56,284)
Eastern Europe	1	10,474	69	0.66 (0.51–0.83)	293,013,000	1,933,885 (1,494,366–2,432,007)
Hungary	1	10,474	69	0.66 (0.51–0.83)	9,660,000	63,756 (49,266–80,178)
Northern Europe	12	121,836	5,994	5.27 (3.97–6.57)	106,261,000	5,599,954 (4,218,561–6,981,347)
England	9	99,908	5,544	5.65 (4.61–6.69)	67,886,000	3,835,559 (3,129,544–4,541,573)
Denmark	2	21,715	418	1.77 (1.60–1.95)	5,792,000	102,518 (92,672–112,944)
Sweden	1	213	32	15.0 (10.5–20.5)	10,099,000	1,516,869 (1,061,405–2,074,334)
Eastern and south-eastern Asia	13	89,648	1,855	2.02 (1.56–2.49)	2,346,709,000	47,403,521 (36,608,660– 58,433,054)
Eastern Asia	12	88832	1852	2.02 (1.56–2.49)	1,678,090,000	33,897,418 (26,178,204– 41,784,441)
China	8	86,416	1,756	1.63 (1.13–2.13)	1,439,324,000	23,460,981 (16,264,361 – 30,657,601)
Japan	3	2,218	81	3.62 (2.84–4.39)	126,476,000	4,578,431 (3,591,918 – 5,552,296)
South-Korea	1	198	15	7.58, (4.30–12.2)	51,269,000	3,886,190 (2,204,567 – 6,249,691)
South-Eastern Asia	1	816	3	0.37 (0.08–1.07)	668,620,000	2,473,894 (534,896–7,154,234)
Malaysia	1	816	3	0.37 (0.08–1.07)	32,366,000	119,754 (25,893–346,316)
Latin America and the Caribbean	17	33,596	618	1.45 (0.95–1.94)	653,962,000	9,482,449 (6,212,639–12,686,862)
South America	17	33,596	618	1.45 (0.95–1.94)	430,760,000	6,246,020 (4,092,220–8,356,744)
Brazil	15	32,352	479	0.96 (0.52–1.40)	212,559,000	2,040,566(1,105,306- 2,975,826)
Chile	2	1,244	139	10.78 (9.1–12.5)	19,116,000	2,060,704(1,731,909 -2,389,500)
Sub-Saharan Africa	1	3,098	174	5.62 (4.83–6.49)	1,094,366,000	61,503,369 (52,857,878–71,024,353)
Kenya	1	3,098	174	5.62 (4.83–6.49)	53,771,000	3,021,930 (2,597,139–3,489,738)
Central and southern Asia	1	528	117	22.16 (18.7–26.0)	2,014,709,000	446,459,514(376,549,112- 522,816,985)
Iran	1	528	117	22.16 (18.7–26.0)	83,993,000	18,612,848(15,698,291-21,796,183)
Northern Africa and western Asia	1	130	6	4.62 (1.71–9.78)	525,869,000	24,295,147(8,992,359- 51,429,988)
Libya	1	130	6	4.62 (1.71–9.78)	6,871,000	317,440 (117,494 – 671,983)

Table 2. Prevalence of serum antibodies to SARS-CoV-2 in the general population according to *a priori* defined subgroups

Variable/subgroups	Number datasets	Number of people screened (total)	Number of seropositive people	Pooled seroprevalence % (95% CI)
Gender				
Male	29	145,368	6,186	5.33 (4.35–6.31)
Female	29	151,790	6,958	5.05 (4.06–6.04)
Age				
≤19	11	18,333	535	2.28 (1.01–3.56)
20-49	15	96,109	4,268	3.22 (1.90–4.55)
50-64	15	75,589	3,769	2.98 (1.59–4.36)
≥65	12	41,421	1,634	2.57 (1.39–3.76)
Type of population				
General	68	227,428	6,483	2.43 (2.16–2.70)
General-adult	18	169,016	9,201	5.31 (4.12–6.50)
General-children	2	1,821	162	8.76 (7.46–10.06)
Serological method				
LFIA	58	224,922	10,023	3.95 (3.17–4.74)
ELISA	23	38,159	1,417	3.53 (2.65–4.40)
CLIA	15	80,435	1,907	2.73 (2.03–3.42)
Virus neutralisation assay	10	40,648	645	1.32 (0.90–1.74)
Microsphere immunoassay	1	15,101	1,887	12.50 (11.97–13.03)
Type of procedure				
Commercial kit	83	334,334	13,870	3.33 (2.95–3.71)
In-house	24	64,931	2,009	3.63 (2.79–4.48)
Race/ethnicity				
White, non-Hispanic	7	114,544	5,662	3.76 (1.43–6.08)
Black, non-Hispanic	7	7,287	649	9.96 (2.95–16.97)
Brown/Hispanic	7	14,347	1,016	8.76 (0.01–18.65)
Multiple race/Asian/Other/Unknown	7	8,139	709	5.78 (1.76–9.79)

Table 3. Prevalence of serum antibodies against SARS-CoV-2 in the general population based on sub-groups according to different socio-demographic and geographic parameters, calculated using a random effects model.

Parameters/subgroups	Number of datasets	Number of people screened (total)	Number of seropositive people	Pooled seroprevalence % (95% CI)
Income				
Lower middle	1	3,098	174	5.62 (4.83–6.49)
Upper middle	26	120,242	2,361	1.31 (1.02–1.59)
High	80	275,925	13,344	4.44 (3.77–5.1)
Human Development Index				
Medium	1	3,098	174	5.62 (4.83–6.49)
High	26	119,426	2,358	1.35 (1.06–1.64)
Very high	80	276,741	13,347	4.37 (3.71–5.02)
Latitude				
0-20°	5	18,007	496	2.99 (0.71–5.28)
20-40°	49	160,890	4,034	2.29 (2.03–2.56)
40-60°	53	220,368	11,349	4.68 (3.92–5.43)
Longitude				
0-30°	53	220,851	9,969	4.15 (3.49–4.82)
30-60°	16	35,478	769	1.76 (1.18–2.34)
60-90°	10	27,927	2,435	6.36 (3.07–9.66)
90-120°	18	102,378	2,497	2.80 (2.37–3.22)
≥ 120	10	12,631	209	1.63 (1.01–2.25)
Relative humidity (%)				
< 60	15	62,692	3,763	5.84 (3.81–7.87)
60-79	76	306,057	11,159	3.41 (2.96–3.85)
≥ 80	16	30,516	957	2.77 (2.01–3.55)
Mean temperature (°C)				
< 7	4	1,765	102	7.87 (1.54–14.20)
7.1-13	36	111,683	5,351	4.27 (3.23–5.32)
13.1-19	43	232,763	9,332	4.16 (3.53–4.78)
19.1-25	18	29,550	303	0.85 (0.60–1.11)
25.1-30	6	23,504	791	3.79 (1.75–5.84)

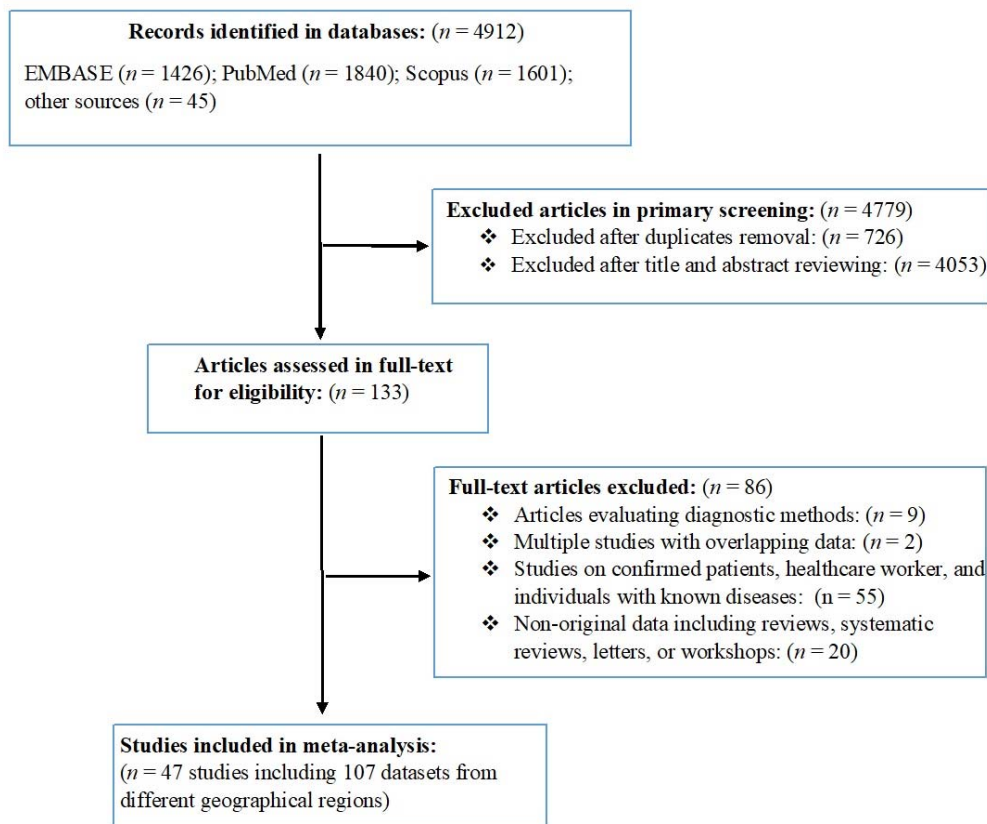


Figure 1. Flowchart of the search strategy and study-selection process, indicating numbers of studies (and associated datasets) excluded or included.

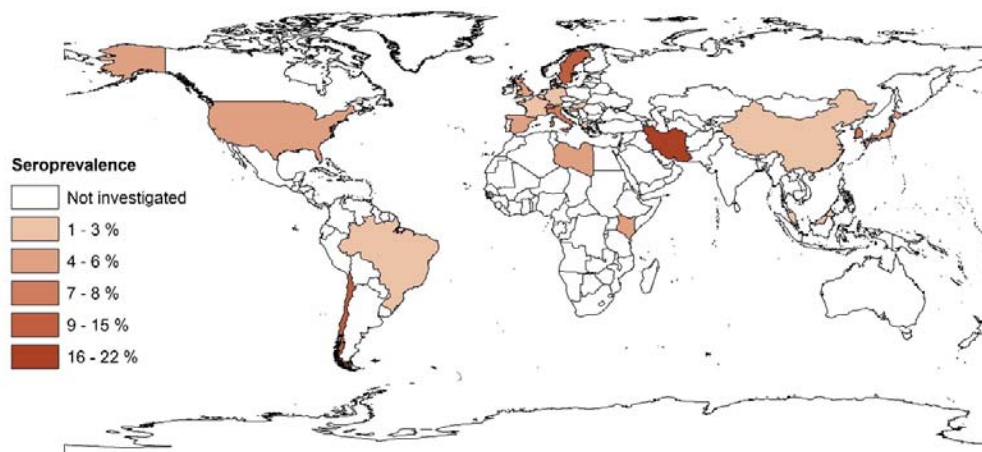


Figure 2. Estimated prevalences of anti-SARS-CoV-2 serum antibodies in the general human population in different countries using geographic information system (GIS).

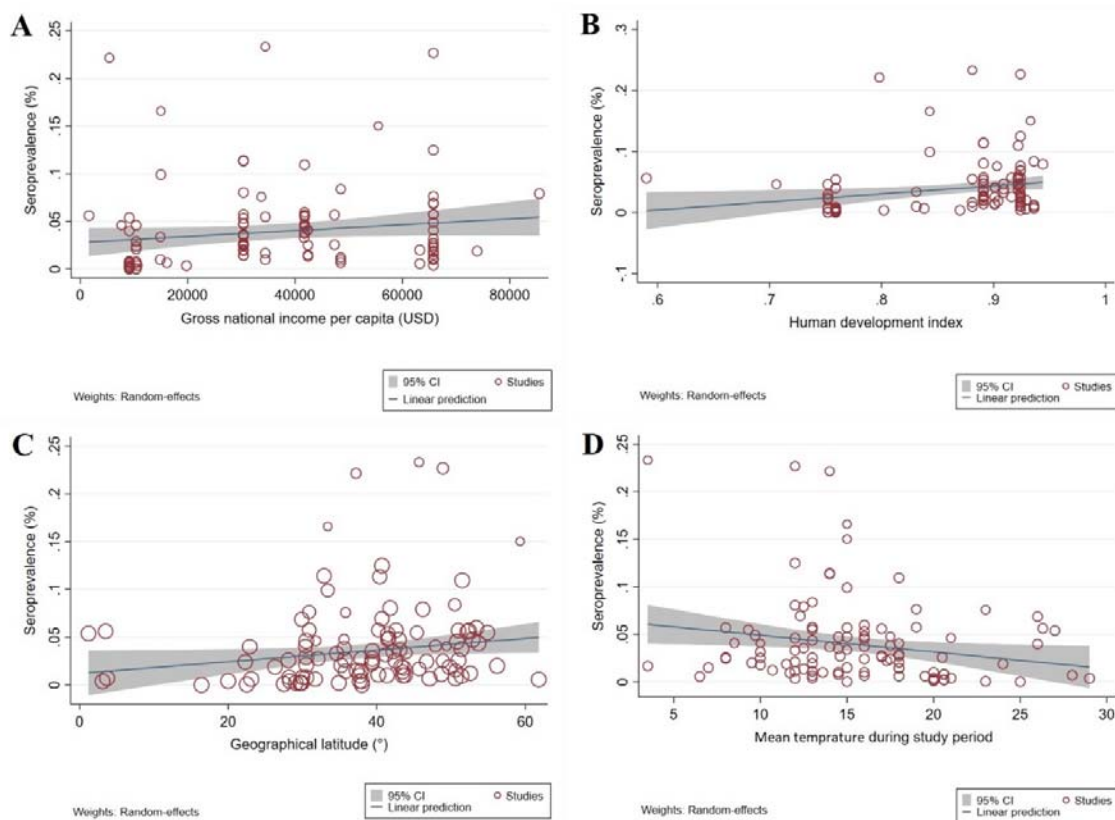


Figure 3. Ecological random effects meta-regression analyses of the seroprevalence of SARS-CoV-2 in the general population according to: (A) a country's income level – showing a statistically significant upward trend in seroprevalence in countries with higher income levels; (B) human development index (HDI) – showing a statistically significant upward trend in seroprevalence in countries with higher HDIs; (C) geographical latitude – showing a statistically significant upward trend in seroprevalence with increasing geographical latitude; (D) the mean temperature during study implementation – showing a statistically significant downward trend in seroprevalence with increasing mean temperature