

1 **Full Title: 12 Novel Clonal Groups of *Leptospira* Infecting Humans in Multiple**  
2 **Contrasting Epidemiological Contexts in Sri Lanka**

3

4 Dinesha Jayasundara <sup>1,2</sup>, Indika Senavirathna <sup>1,3</sup>, Janith Warnasekara <sup>1</sup>, Chandika Gamage <sup>4</sup>,  
5 Sisira Siribaddana<sup>5</sup>, Senanayake Abeysinghe Mudiyansele Kularatne <sup>6</sup>, Michael  
6 Matthias<sup>7</sup>, Mariet JF<sup>8</sup>, Mathieu Picardeau<sup>8</sup>, Suneth Agampodi<sup>1,7</sup>, Joseph Vinetz<sup>7</sup>

7 <sup>1</sup>  
8 Leptospirosis Research Laboratory, Department of Community Medicine, Faculty of  
9 Medicine and Allied Sciences, Rajarata University of Sri Lanka

10 <sup>2</sup>  
11 Department of Microbiology, Faculty of Medicine and Allied Sciences, Rajarata  
12 University of Sri Lanka

13 <sup>3</sup>  
14 Department of Biochemistry, Faculty of Medicine and Allied Sciences, Rajarata  
15 University of Sri Lanka

16 <sup>4</sup>  
17 Department of Microbiology, Faculty of Medicine, University of Peradeniya, Sri Lanka

18 <sup>5</sup>  
19 Department of Medicine, Faculty of Medicine and Allied Sciences, Rajarata University of  
20 Sri Lanka

21 <sup>6</sup>  
22 Department of Medicine, Faculty of Medicine, University of Peradeniya, Sri Lanka

23 <sup>7</sup>  
24 Yale University school of Medicine, New Haven, Connecticut, USA

25 <sup>8</sup>  
26 Institut Pasteur, Biology of Spirochetes unit, Paris, France

27

20 **Abstract**

21 Leptospirosis is a ubiquitous disease and a major clinical challenge owing to the multitude  
22 of clinical presentations and manifestations that are possibly attributable to the diversity of  
23 *Leptospira*, the understanding of which is key to study the epidemiology of this emerging  
24 global disease threat. Sri Lanka is a hotspot for leptospirosis with high levels of endemic  
25 disease as well as annual epidemics. We carried out a prospective study of *Leptospira*  
26 diversity in Sri Lanka, covering the full range of climatic zones, geography, and clinical  
27 severity. Samples were collected for leptospiral culture from 1192 patients from 15 of 25  
28 districts in Sri Lanka over two and half years period. Twenty five isolates belonging to four  
29 pathogenic *Leptospira* species were identified: *L. interrogans*, *L. borgpetersenii*, *L. weilii*,  
30 and *L. kirschneri*. At least six serogroups were identified among the isolates: Autumnalis  
31 (6), Pyrogenes (4), Icterohaemorrhagiae (2), Celledoni (1), Grippotyphosa (2) and Bataviae  
32 (1). Seven isolates did not agglutinate using available antisera panels, suggesting new  
33 serogroups. Isolates were sequenced by Illumina. These data add 25 new core genome  
34 sequence types and were clustered in 15 clonal groups, including 12 new clonal groups. *L.*  
35 *borgpetersenii* was found only in the dry zone and *L. weilii* only in the wet zone. Acute  
36 kidney injury and cardiovascular involvement were seen only with *L. interrogans*  
37 infections. Thrombocytopenia and liver impairment were seen in both *L. interrogans* and *L.*  
38 *borgpetersenii* infections. The inadequate sensitivity of culture isolation to identify  
39 infecting *Leptospira* species underscores the need for culture-independent typing methods  
40 for *Leptospira*.

41

42

43 **Author Summary**

44

45 There is a huge diversity in pathogenic *Leptospira* species worldwide, and our knowledge  
46 of the currently circulating species is deficient owing to limited isolation and identification  
47 of *Leptospira* species from endemic countries. This prospective study reveals the wide  
48 pathogen diversity that causes human leptospirosis in Sri Lanka, representing four species,  
49 more than six serogroups, and fifteen clonal groups. Further, the different geographic and  
50 climatic zone distributions and clinical manifestations observed underscores the need for  
51 prospective studies to expand the molecular epidemiological approaches to combat  
52 leptospirosis

53

54

55

## 56 **Introduction**

57 Leptospirosis is caused by a group of pathogenic *Leptospira* species of the phylum  
58 Spirochetes and is considered one of the commonest zoonotic diseases worldwide [1][2].  
59 *Leptospira* spp. have the ability to colonize proximal convoluted tubules of kidney tissue of  
60 various mammals (including rodents), birds and marsupials, and the hosts excrete the  
61 bacteria to the environment via urine [3][4]. Humans are incidental hosts who acquire the  
62 disease by direct contact with urine or tissues of reservoir animals or, more frequently by  
63 indirect contact with contaminated water sources [5][6]. The number of cases due to  
64 leptospirosis is estimated to be 1.03 million annually worldwide, with 58,900 deaths [1].  
65 The majority of tropical countries in Oceania, southeast Asia, the Caribbean region, central  
66 and eastern sub-Saharan Africa, and south Asia are estimated to have substantial morbidity  
67 and mortality that is attributable to leptospirosis.[7]

68

69 Understanding the diversity of infecting *Leptospira* has been a major global focus,  
70 especially in recent years. The phenomenal changes in *Leptospira* classification backed by  
71 next-generation sequencing methods and whole-genome sequencing have led to the  
72 identification of 43 new *Leptospira* species during the period 2018 to 2020 [8–11]. In  
73 addition, the more robust classification of *Leptospira* strains beyond the species level using  
74 core-genome multi-locus sequence typing (cgMLST) [9] and single nucleotide  
75 polymorphism typing methods has rapidly expanded our knowledge of the molecular  
76 epidemiology of *Leptospira*. However, the goal of reducing the global burden of this deadly  
77 disease will require enhanced understanding of pathogen types and applications and linkage  
78 to disease distribution, transmission, clinical presentations, and outcomes.

79

80 The global leptospirosis disease burden study [1] has highlighted Sri Lanka as a  
81 hyperendemic country with an estimated morbidity of 300.6 and mortality of 17.98 per  
82 100,000 population per year. The disease incidence tends to be higher during the rainy  
83 seasons, i.e., the southwest and northeast monsoons. Cases, however, are not confined  
84 exclusively to the wet zone and are reported in the dry zone as well, where the majority of  
85 residents are engaged in farming activities. Outbreaks have also occurred in the dry zone  
86 following extreme weather events like flooding [12].

87

88 As in many other endemic countries, understanding *Leptospira* diversity in Sri Lanka is  
89 limited because of a lack of knowledge of the circulating pathogenic species and serovars.  
90 Studies that utilized culture-based isolation of *Leptospira* species were carried out in Sri  
91 Lanka during the period from 1950 to 1970 in the wet zone only. Several pathogenic strains  
92 of the species *L. interrogans* [13][14][15], *L. borgpetersenii* [16], *L. kirschneri* [17], and *L.*  
93 *santarosai* were detected during that time [18][19]. Since the 1970s, no culture based  
94 isolation studies were reported until 2018, when two human isolates belonging to *L.*  
95 *interrogans* were recovered from the wet zone [20]. Despite the availability of next-  
96 generation sequencing methods for many years, whole-genome sequencing data for Sri  
97 Lankan isolates were not available until recently [21].

98

99 A systematic review published in 2016 revealed the large diversity of *Leptospira* strains in  
100 Sri Lanka based on historical data [19]. Being an island with a high leptospirosis disease  
101 burden makes Sri Lanka an ideal location to study pathogen diversity linked with  
102 epidemiological and clinical patterns of the disease. Low-passage isolates from human  
103 sources with high-resolution genetic typing in a place with high pathogen diversity would  
104 enhance our global knowledge of leptospirosis. This study was designed to provide a

105 comprehensive understanding of the circulating pathogenic *Leptospira* species and  
106 serotypes responsible for human leptospirosis in Sri Lanka, covering different clinical  
107 presentations and geographical locations as well as epidemic and endemic disease over a  
108 period of two and half years.

109

## 110 **Methods**

111 The present study was embedded in a larger clinical-epidemiological study on leptospirosis,  
112 in Sri Lanka and the study protocol was published elsewhere [22]. Specific details related  
113 to *Leptospira* diversity and methods in brief are given here.

114

### 115 ***Study setting***

116 This study was carried out from June 2016 through January 2019 at several locations in Sri  
117 Lanka that differed with respect to mean temperature, rainfall, elevation, ecology, human  
118 activities, and leptospirosis endemicity. The main data collection sites were the Teaching  
119 Hospital Anuradhapura (THA) and Teaching Hospital Peradeniya (THP). THA is in the dry  
120 zone located at low elevation with low humidity, high temperature, large rice paddy fields,  
121 water reservoir-based irrigation systems, and low endemicity for the disease. THP is in the  
122 wet zone located at high elevation, low temperature, rainfall-based farming activities, and  
123 high endemicity. Samples for *Leptospira* diversity assessment were collected through two  
124 approaches. First, as a part of the main study described in Agampodi et al. 2019,  
125 prospective data and sample collection was done in THA and THP. In addition, during an  
126 outbreak of leptospirosis in 2017, we set up the same procedure at Base Hospital  
127 Avissawella and Provincial General Hospital Rathnapura from June to September. These  
128 two wet-zone areas have high endemicity, representing low and intermediate elevations. As  
129 a part of the service component of this study, we offered diagnostic services to all

130 requesting physicians and also collected additional culture samples. This resulted in sample  
131 collection from District General Hospital Kegalle, Base Hospital Karawanella, Sri  
132 Jayawardanapura General Hospital, and General Hospital Polonnaruwa (GHP) again  
133 representing different geographical locations. These study sites (Fig 1) represent seven  
134 districts belonging to four provinces of the country, and the patients who visited these  
135 hospitals came from all nine provinces.

136

137 **Fig 1. Locations of the seven hospitals involved in the study**

138

139 ***Study samples***

140 Culture collection was done from three types of patients. Acute undifferentiated febrile  
141 (temperature  $>38^{\circ}\text{C}$ ) patients who presented to adult wards (age  $>13$  years) of THA, THP,  
142 Provincial General Hospital Rathnapura (PGHR) and Base Hospital Avissawella (BHA)  
143 (both outpatient department and hospitalized patients) were included as possible cases of  
144 leptospirosis. A possible case was defined as any acute undifferentiated febrile patient with  
145 headache, myalgia and prostration. Probable cases of clinical leptospirosis which were  
146 defined as those who were having the classical clinical features of leptospirosis with an  
147 exposure history, were included from GHP. Culture samples from Sri Jayawardanapura  
148 General Hospital and Base Hospital Karawanella were included only if they came from  
149 clinically confirmed cases of leptospirosis. These cases were defined according to the  
150 surveillance case definition for leptospirosis set by epidemiology unit of Sri Lanka[23].  
151 Physician-diagnosed probable or definite acute bacterial meningitis or lower respiratory  
152 tract infections (e.g., consolidated lobar pneumonia), traumatic or post-operative fever per  
153 physician discretion, fever owing to nosocomial infections, and any patient with confirmed  
154 diagnosis as a cause for the fever were excluded. Epidemiological data were collected from

155 each patient using a fully structured, interviewer administered questionnaire which was  
156 described in detail in the study protocol paper published elsewhere[22]

157

### 158 ***Sample collection and isolation of Leptospira***

159 Blood (7 ml) was collected into EDTA tubes from all eligible patients. Bedside inoculation  
160 of 2 and 4 drops (100–400 µl) was done into two tubes with 9 ml Ellinghausen-  
161 McCullough-Johnson-Harris (EMJH) semisolid medium with added antibiotics (5-  
162 fluorouracil and neomycin). These cultures were kept at room temperature (usually 28–  
163 32°C) until transfer to the Leptospirosis Research Laboratory of the Faculty of Medicine  
164 and Allied Sciences, Rajarata University, Sri Lanka, and then incubated at 30°C until the  
165 cultures become positive or for 6 months. Samples from THA were transferred on the same  
166 day to the research laboratory whereas other samples collected from distant places were  
167 transferred within 2 days of collection.

168

169 In brief, EMJH semisolid media were prepared by adding 2.3 g of EMJH base (Difco), 1.5  
170 g bacteriological agar, and 100 mg sodium pyruvate into 785 ml distilled water and  
171 adjusting the pH to 7.4. The media were autoclaved, and once cooled to ~50°C, 100 ml  
172 *Leptospira* enrichment media and 100 ml fetal bovine serum were added. To suppress the  
173 growth of possible contaminating bacteria, 5-fluorouracil (100 µg/ml, final) and neomycin  
174 (25 µg/ml) were added. Each inoculated medium was inspected by taking approximately  
175 50µl of volume into a clean glass slide after mixing the culture tubes well by inverting  
176 several times. Prepared slides were examined under 40X objective of a dark-field  
177 microscope to check for the presence of motile spirochetes; this was done initially after 3  
178 weeks and then on a monthly basis. However, samples were inspected before 3 weeks if  
179 quantitative PCR of the corresponding whole-blood sample indicated a positive reaction.



180 The procedure for qPCR on clinical samples is described elsewhere in the published  
181 protocol paper[22]. Culture tubes were inspected for consecutive 4 months before reporting  
182 as negative. When positive growth was detected, subcultures were made into liquid and  
183 semisolid media, and an aliquot was fixed with 5% dimethyl sulfoxide and stored at  $-80^{\circ}\text{C}$ .  
184 Isolates were subcultured in liquid media once in 2 weeks and on semisolid media once in 3  
185 months. Certain isolates required weekly subculture into liquid media to maintain viability.  
186 None of the isolates became contaminated during the subculture process, although two  
187 positive original clinical samples were contaminated with bacilli. For those two samples,  
188 subcultures were made into liquid media and subsequently filtered through a  $0.2\ \mu\text{m}$  pore-  
189 size microfilter to overcome the problem of contamination.

#### 190 *Next-generation sequencing, cgMLST and phylogenetic tree*

191 DNA was extracted from culture using the PureLink Genomic DNA Mini kit (Invitrogen,  
192 Dublin, Ireland) and Wizard Genomic DNA Purification Kit (Promega, Southampton, UK)  
193 according to manufacturer instructions. NGS was performed using Nextera XT DNA  
194 Library Preparation kit and the NextSeq 500 sequencing systems (Illumina, San Diego, CA,  
195 USA) at the Mutualized Platform for Microbiology (P2M) at Institut Pasteur. The data were  
196 analyzed using CLC Genomics Workbench 9 software (Qiagen, Hilden, Germany).

197 cgMLST typing was performed for strain taxonomy using a scheme based on 545 highly  
198 conserved genes with BIGSdb (<http://bigsdb.pasteur.fr/leptospira>), and a phylogenetic tree  
199 was generated using cgMLST with Interactive Tree of Life v3, and GrapeTree [24] was  
200 used to visualize the core genomic relationships among the isolates and the previously  
201 reported Sri Lankan isolates [9][25][26]. Clonal Groups (CG) is defined as a group of  
202 cgMLST allelic profiles differing by no more than 40 allelic mismatches, out of 545 gene  
203 loci, from at least one other member of the group.

#### 204 *Serotyping of new isolates*

205 Serotyping of newly isolated *Leptospira* strains was done at the Pasteur Institute, France.  
206 Microscopic agglutination test using a standard battery of rabbit antisera raised against 24  
207 reference serovars representing the main serogroups was used for this study [27][28].

### 208 ***Ethics statement***

209 Written informed consent was obtained from all patients prior to sample collection. This  
210 study is approved by the Ethics Review Committee of the Faculty of Medicine and Allied  
211 Sciences, Rajarata University of Sri Lanka. Protocol No. ERC/2015/18

212

### 213 **Results**

214 From June 2016 through January 2019, we acquired blood cultures from 1192 patients.  
215 Patients were from 14 districts of Sri Lanka, representing all 9 provinces (Fig 2).

216

### 217 **Fig 2. Distribution of probable exposure sites/residence of the patients recruited for** 218 **the study.**

219 The majority of patients were male (n = 985, 82.6%). The mean age of the sample was 43.4  
220 years (SD 14.7). Most of the cultures (96%) were obtained from hospital inpatients, and the  
221 remaining 4% (48 cultures) were from outpatients. Of the 1192 cultures, 80 (6.7%) were  
222 received from hospitals where only typical clinical cases of leptospirosis were sampled  
223 (from Sri Jayawardanapura General Hospital, Base Hospital Karawanella and Provincial  
224 General Hospital Rathnapura). Another 107 (9.0%) were from GHP, where patients  
225 represented only probable cases of leptospirosis. The remaining 1005 patients (84.3%) were  
226 from THA, THP, Base Hospital Awissawella and Provincial General Hospital Rathnapura,  
227 representing patients who presented with acute undifferentiated fever.

228

229 Of the 1192 patients, 25 isolates had been identified by January 2019. Among the acute  
230 undifferentiated febrile patients, 1.5% (16/1047) had culture-positive leptospirosis; among  
231 the probable and clinically confirmed cases of leptospirosis, culture positivity was 4.7%  
232 (5/107) and 5.0% (4/80), respectively. The incubation period required to detect positive  
233 growth (assessed with dark-field microscopy) varied between 1 and 17 weeks. For each  
234 patient, both 2 drops and 4 drops of blood-inoculated media gave positive results. The  
235 median incubation period was 15 weeks for the first 9 isolates and was 6 weeks for the  
236 remaining 16 isolates (Sup.figure1).

237

238 *Leptospira* was isolated from one female and 24 male patients who presented with fever.  
239 Only three patients were from outpatient departments, and the rest were inpatients. Of the  
240 three outpatients, two were later admitted to a hospital owing to increased disease severity.

241

242 cgMLST analysis revealed that the 25 isolates represented four species: *L. interrogans* (15  
243 isolates, 60%), *L. borgpetersenii* (7 isolates, 28%), *L. weilii* (2 isolates, 8%), and *L.*  
244 *kirschneri* (1 isolate, 4%) The isolates which were classified using core genome MLST  
245 genotyping scheme based on clusters created at the 40-mismatch level revealed the clonal  
246 group identity of them . A clonal group was defined using a single linkage clustering with a  
247 threshold set at 40 allelic mismatches. The predominant clonal group (CG) was CG267 (All  
248 7 *L. borgpetersenii* isolates among the 25 total isolates). This was followed by CG266  
249 (3/25), CG10 (2/25), and CG263 (2/25) of *L.interrogans*. The two *L. weilii* isolates  
250 clustered in different clonal groups (CG262, CG264). Interpretable data for serogroup assay  
251 was available for only 19 isolates. Seven samples resulted in no agglutination, probably  
252 owing to new, previously unreported serogroups/serovars. The assay revealed that the 19  
253 seropositive isolates represented at least six serogroups, namely Autumnalis, Pyrogenes,

254 Icterohaemorrhagiae, Grippotyphosa, Celledoni, and Bataviae. Table 1 shows the species  
255 identity, serogroup status and distribution of clonal groups among the 25 isolates

256

257

258 **Table 1. Putative species, serogroups, cgMLST and clonal groups for the *Leptospira***  
259 **isolates**

Strain ID	Species	Serogroup	cgMLST	CG
FMAS_KW1	<i>L. interrogans</i>	Pyrogenes	784	10
FMAS_KW2	<i>L. interrogans</i>	Autumnalis	631	291
FMAS_AW1	<i>L. interrogans</i>	Autumnalis	555	74
FMAS_RT1	<i>L. weilii</i>	No agglutination	556	262
FMAS_AW2	<i>L. interrogans</i>	Autumnalis	567	269
FMAS_AW3	<i>L. interrogans</i>	Pyrogenes	557	9
FMAS_RT2	<i>L. interrogans</i>	Autumnalis	569	271
FMAS_PD1	<i>L. interrogans</i>	Pyrogenes	558	263
FMAS_PD2	<i>L. weilii</i>	Celledoni	559	264
FMAS_KG1	<i>L. interrogans</i>	Bataviae	560	265
FMAS_KG2	<i>L. interrogans</i>	Pyrogenes	561	263
FMAS_AP1	<i>L. interrogans</i>	Autumnalis	562	266
FMAS_AP2	<i>L. borgpetersenii</i>	No agglutination	563	267
FMAS_AP3	<i>L. borgpetersenii</i>	No agglutination	575	267
FMAS_AP4	<i>L. borgpetersenii</i>	No agglutination	564	267
FMAS_AP5	<i>L. interrogans</i>	Pyrogenes	565	10
FMAS_AP6	<i>L. interrogans</i>	Pyrogenes	785	321
FMAS_AP7	<i>L. interrogans</i>	Autumnalis	786	266

---

FMAS_PN1	<i>L. borgpetersenii</i>	No agglutination	787	267
FMAS_PN2	<i>L. interrogans</i>	Icterohaemorrhagiae	788	322
FMAS_PN3	<i>L. interrogans</i>	Autumnalis	789	266
FMAS_PN4	<i>L. borgpetersenii</i>	No agglutination	790	267
FMAS_AP8	<i>L. borgpetersenii</i>	No agglutination	791	267
FMAS_AP9	<i>L. borgpetersenii</i>	No agglutination	792	267
FMAS_PN5	<i>L. kirschneri</i>	Grippotyphosa	793	323

---

260 **cgMLST**- core genome Multi Locus Sequence Typing, **CG**: clonal group defined as a group of  
261 cgMLST allelic profiles differing by no more than 40 allelic mismatches, out of 545 gene loci, from  
262 at least one other member of the group  
263

264

265 A phylogenetic tree was constructed from the cgMLST data for the 25 isolates together  
266 with available data for previous reported nine (09) local isolates and currently circulating  
267 pathogenic species worldwide. Fig 4 shows the phylogenetic tree which was constructed  
268 with the cgMLST data.

269

270 **Fig 3 Phylogenetic tree showing the distribution of species and serogroups of the**  
271 **isolates from the present study along with the previously reported Sri Lankan isolates**  
272 **and others species.**

273

274 Most of the clonal groups found in the local isolates were unique and not found in other  
275 countries. FMAS\_AP2, FMAS\_AP3 and FMAS\_AP8 of *L.borgpetersenii* shows clear core  
276 genomic relatedness forming a single cluster from the other four isolates of the same  
277 species (Fig 4A). These three isolates were from patients in the same district of dry zone.  
278 The previously reported four isolates of *L. kirschneri* from Rathnapura was distinct from  
279 newly isolated *L.kirschneri* from Polonaruwa, even though they are in the same arm.

280 Two clear clusters of interograns could be observed. In one cluster AP7 ,PN3 AP1 of  
281 serogroup Autumnalis from dry zone shows significant core genome relatedness and  
282 clustered together. The other cluster was formed with FMAS\_AP6, FMAS\_KW1,  
283 FMAS\_AP5 and isolate Sri Lanka 39 of Pyrogenes serogroup. These isolates represent both  
284 dry and wet zones. There's genomic relatedness between FMAS\_AP5 of dry zone and Sri  
285 Lanka 39 which is an old isolate recovered from wet zone. Another close association was  
286 observed between FMAS\_KG2 and FMAS\_PD1 which are from wet zone and of serogroup  
287 Pyrogenes. Two *L. welli* isolated from Rathnapura(RT1) and Peradeniya (PD2) have not  
288 shown a significant core genomic relation. (metadata for the GrapeTree is included in  
289 Sup.Table 1)

290

291 **Fig 4. Genome GrapeTree showing the core-genome relationship among the 25 new**  
292 **and 9 previously isolated *Leptospira* strains from Sri Lanka**

293

294 Culture-positive leptospirosis patients were distributed widely in the study areas (Fig 5). *L.*  
295 *borgpetersenii* was exclusively isolated from patients in areas of the dry zone at low  
296 elevation, with hot and dry conditions. The single isolate of *L. kirschneri* was from the  
297 same setting. In contrast, *L. weilii* was isolated from patients in the wet zone, whereas *L.*  
298 *interrogans* was isolated from patients in all geographical areas (Fig 5). The serogroup  
299 distribution also revealed a specific pattern for all nonagglutination isolates, which mainly  
300 were from the dry zone at low elevation. The most frequent serogroup Autumnalis, was  
301 observed in all geographical settings. All *L. borgpetersenii* isolates were in CG267, the  
302 majority of which failed to agglutinate with rabbit sera (some slightly agglutinated with  
303 serovars Grippotyphosa and Louisiana).

304

305 **Fig 5. Geographic distribution of *Leptospira* species, serogroups and clonal groups**

306

307 **Clinical profile of culture-positive patients**

308 Complete demographic and clinical profiles for the culture-positive patients are included as  
309 a supplementary data (Sup. Table 1). All culture-positive patients were later contacted  
310 and/or visited to collect additional data. The additional data were collected mainly to  
311 identify exact type of exposure if possible and residing places of patients preceding the  
312 illness. In addition, diagnosis cards of these patients were also traced to extract any missing  
313 data during hospital stay. Each patient's clinical records were also retrieved from the  
314 corresponding hospital. No fatalities were reported for patients with culture-positive  
315 leptospirosis. Among hospitalized patients, the median duration of hospital stay was 4 days  
316 (interquartile range, 3–5 days), and the longest stay was 12 days followed by 9 days (both  
317 patients had acute kidney injury and required hemodialysis). Another two had renal  
318 involvement with elevated serum creatinine but not acute kidney failure. Twelve patients  
319 had elevated serum glutamic-oxaloacetic transaminase and serum glutamic-pyruvic  
320 transaminase, and three other patients had elevated serum bilirubin. Thrombocytopenia was  
321 common in those 12 patents, with a platelet count <100,000 per microliter. Two patients  
322 who underwent hemodialysis also had cardiac involvement with hypotension. Each patient  
323 who had a severe complication was infected with *L. interrogans*. Infection with *L.*  
324 *interrogans* or *L. borgpetersenii* was associated with thrombocytopenia and liver  
325 involvement.

326

327

328 **Discussion**

329 This is the first study to report information on the diversity of pathogenic *Leptospira*  
330 species in Sri Lanka and probably one of the few prospective studies on *Leptospira* disease  
331 diversity in literature representing all geographical regions of an entire country. In addition,  
332 we report here the first isolation of *L. weilii* in Sri Lanka, the existence of which was  
333 suggested based on molecular studies of clinical samples [29]. This study also provides the  
334 first evidence of serogroups Celledoni and Bataviae circulating in Sri Lanka. Moreover,  
335 with the exception of *L. santarosai*, our study identified all pathogenic *Leptospira* species  
336 that were reported to have existed in Sri Lanka during the 1960s and 70s (as reviewed by  
337 Naotunna et al. in 2015), confirming the breadth of *Leptospira* diversity in Sri Lanka [19].  
338 Recent reports indicated that *L. interrogans*, *L. borgpetersenii* and *L. kirschneri* are also the  
339 most common circulating species in other tropical regions of the world  
340 [30][31][32][33][34][35]. However, the geographical distribution of certain *Leptospira*  
341 species is limited, such as *L. santarosai*, which has been mainly reported in South America  
342 [36][37][38][39], and *L. weilii* in Asia [35][40][41][42]. Only limited reports have  
343 described the existence of *L. weilii* outside Asia, where cattle and rodents are the dominant  
344 reservoir hosts [42][43][44][45].  
345  
346 We identified 15 distinct clonal groups of *Leptospira*, underscoring the diversity of  
347 pathogenic *Leptospira* circulating in Sri Lanka. The unique identity of most clonal groups  
348 among the local isolates emphasizes the significance of conserved reservoir hosts and  
349 serovars in an island. Genomic relatedness wasn't observed between most of old Sri  
350 Lankan isolates with these new isolates probably due to changes in the bacterial genome or  
351 due to emergence or introduction of new strains. The distribution of certain clonal groups  
352 revealed a geographical demarcation between dry and wet zones. A single clonal group  
353 status and restriction to dry zone of all *L. borgpetersenii* isolates together with core



354 genomic relatedness among three isolates from same district are interesting observations.  
355 These might reflect similarities in climate, reservoir hosts and environmental conditions in  
356 a particular geographical area. Clustering of *L.interrogans* into several clonal groups and  
357 shared genomic relatedness across different geographical areas could possibly be due to  
358 diversity of reservoir hosts and adoptability of the species to different environmental  
359 conditions. These observations might possibly suggests that different environmental drivers  
360 of leptospirosis operate in distinct ways for different pathogenic species and their serovars  
361 in these climatic zones. The predominance of *L. borgpetersenii* and *L. kirschneri* over *L.*  
362 *interrogans* has been reported in both humans and cattle in the African continent and  
363 nearby islands such as Mayotte, with possible cattle-to-human transmission [46][47][48].  
364 Moreover, certain rat species also excrete serovars of *L. borgpetersenii* [49][50]. Notably,  
365 areas where *L. borgpetersenii* was found in our study were all in the dry zone where cattle  
366 and buffalo are commonly used in paddy farming activities.  
367 Majority of the total study population and culture positive patients were males and this is  
368 likely to be due to exposure to possible risk factors as males engage in outdoor activities  
369 frequently than women. This pattern of involvement is seen across most of the published  
370 studies worldwide[1][7][51][52]. According to available clinical data renal, hepatic,  
371 haematological and cardiovascular complications are observed in infections with  
372 *L.interrogans*. This is consistent with most published data worldwide[53][54][55]. In  
373 contrast either haematological complications alone or with hepatic involvement was  
374 observed in infection with the single clonal group of *L.borgpetersenii*. However pulmonary  
375 complications were not observed among the 25 culture positive patients.  
376  
377 In our present study, *L. interrogans* was the predominant species identified in patients  
378 residing in the wet zone. Emergence of a single dominant clone that caused an outbreak of

379 leptospirosis following a flood was reported in Thailand] [32]. In contrast with that study,  
380 we observed diverse clonal groups of *L. interrogans* as the cause of human leptospirosis  
381 during floods, probably owing to disease transmission from several different reservoir  
382 hosts.

383

384 The diversity of circulating serogroups in Sri Lanka that has been known since the 1960s  
385 has been preserved, and 19 isolates belong to 6 different serogroups, and the non-  
386 agglutinated cultures might reflect other unidentified serovars other serovars. Serological  
387 and molecular assays done on veterinary field has already identified the role of rodents,  
388 cattle and dogs as reservoir hosts in Sri Lanka[56][57][58]. However the observed diversity  
389 in serogroups offers evidence for a wider range of reservoir hosts despite the fact that Sri  
390 Lanka is a small island.

391

392 Although culture isolation is required for in-depth molecular epidemiological studies, our  
393 present study highlights the constraints faced for culture isolation of *Leptospira*, for which  
394 both a high level of skill and procedural optimization are required. *Leptospira* spp. are  
395 fastidious organisms, and their growth requirements differ from those of many other  
396 bacterial genera. *Leptospira* tend to have a relatively long incubation period, as the lag  
397 period during *in vitro* culture range from days to several weeks [59]. Other culture-isolation  
398 studies have reported an incubation period of ~3 weeks, but with a wide range of duration  
399 [46][60][61]. We attribute the relatively lengthy incubation period of 15 weeks required for  
400 the first nine cultures in our study partly to lack of to detect if any scanty growth of  
401 *Leptospira* during the first phase of the study. However it's also possible that those isolates  
402 were fastidious and required lengthy incubation periods. Isolation is essential for genomic  
403 and vaccine studies pertaining to *Leptospira*, and for that purpose a specific skill set is

404 mandatory. Although culture isolation has 100% positive predictive value for diagnosing  
405 leptospirosis, its sensitivity has been consistently <10% in most studies [32][62][63].  
406 Similarly, our study yielded low sensitivity, which can be attributed to a few possible  
407 causes: Because the study population consisted of patients with acute febrile illness, their  
408 fever may have been caused by another unrelated illness; Use of antibiotics prior to culture;  
409 also, performing blood cultures during the late phase of illness and infection with fastidious  
410 *Leptospira* spp. may account for the low sensitivity during culture isolation.

411

412 This large collection of pathogenic *Leptospira* isolates from clinical samples will be a great  
413 addition to the global knowledgebase for leptospirosis. Whole-genome sequencing and  
414 genomic analysis of this set of isolates will reveal the pathogenic diversity and evolution of  
415 *Leptospira* species, in comparison to archived *Leptospira* isolated from Sri Lanka more  
416 than 50 years ago. The first three isolates from this study are already published[21] and  
417 available in NCBI genome database ([https://www.ncbi.nlm.nih.gov/genome/?term =](https://www.ncbi.nlm.nih.gov/genome/?term=Leptospira+interrogans)  
418 [Leptospira+interrogans](https://www.ncbi.nlm.nih.gov/genome/?term=Leptospira+interrogans)).

419 Whole genome sequencing and comparative genomic analysis of this collection will  
420 facilitate ongoing studies on identifying the putative virulent genes, pathogenic  
421 mechanisms with specific host adaptations, horizontal gene transfer mechanisms, and  
422 microbial resistance as shown in studies on the diversity and epidemiology of other  
423 microorganisms [64][65][66][67][68][69].

424

#### 425 **Acknowledgement**

426 This work was supported by The National Institute of Allergy and Infectious Diseases of  
427 the National Institutes of Health, Award Number U19AI115658. The content is solely the  
428 responsibility of the authors and does not necessarily represent the official views of the

429 National Institutes of Health. The funding body had no role in the design of the study or the  
430 collection, analysis, or interpretation of data or in writing the manuscript and publication.  
431 We would like to thank Ms. Thilakanjali Gamage, Mr. K.M.R. Premathilaka, Mr. S.K.  
432 Senevirathna, and Mr. Milinda Perera for technical assistance, Mr. Shalka Srimantha and  
433 Ms. Chamila Kappagoda for culture maintenance and laboratory support, and Dr. Muditha  
434 Abeykoon, Dr. Chamida Wickramasinghe, and Dr. Shanika Gamage for additional culture  
435 collections. We also thank all the physicians and healthcare staff in the various  
436 participating hospitals, team of core facility P2M (Institut Pasteur, Mutualized Platform for  
437 Microbiology) for genomic sequencing and members of the National Reference Center for  
438 Leptospirosis (Institut Pasteur) for technical assistance with the cultures of *Leptospira*.

439

#### 440 **References**

- 441 1. Costa F, Hagan JE, Calcagno J, Kane M, Torgerson P, Martinez-Silveira MS, et al.  
442 Global Morbidity and Mortality of Leptospirosis: A Systematic Review. PLoS Negl  
443 Trop Dis. 2015;9: e0003898. doi:10.1371/journal.pntd.0003898
- 444 2. Pappas G, Papadimitriou P, Siozopoulou V, Christou L, Akritidis N. The  
445 globalization of leptospirosis: worldwide incidence trends. International Journal of  
446 Infectious Diseases. 2008. pp. 351–357. doi:10.1016/j.ijid.2007.09.011
- 447 3. Levett PN. *Leptospira* and Leptospirosis. Systematics of Leptospiraceae. Adler B,  
448 editor. Curr Top Microbiol Immunol. 2015;387: 11–20. doi:10.1007/978-3-662-  
449 45059-8
- 450 4. Human leptospirosis: guidance for diagnosis, surveillance and control. Rev Inst Med  
451 Trop Sao Paulo. 2003;45: 292–292. doi:10.1590/s0036-46652003000500015
- 452 5. Levett PN. Systematics of leptospiraceae. Curr Top Microbiol Immunol. 2015;387:  
453 11–20. doi:10.1007/978-3-662-45059-8\_2

- 454 6. Haake DA, Levett PN. Leptospirosis in humans. *Curr Top Microbiol Immunol.*  
455 2015;387: 65–97. doi:10.1007/978-3-662-45059-8\_5
- 456 7. Torgerson PR, Hagan JE, Costa F, Calcagno J, Kane M, Martinez-Silveira MS, et al.  
457 Global Burden of Leptospirosis: Estimated in Terms of Disability Adjusted Life  
458 Years. *PLoS Negl Trop Dis.* 2015. doi:10.1371/journal.pntd.0004122
- 459 8. Thibeaux R, Iraola G, Ferrés I, Bierque E, Girault D, Soupé-Gilbert ME, et al.  
460 Deciphering the unexplored *Leptospira* diversity from soils uncovers genomic  
461 evolution to virulence. *Microb genomics.* 2018;4. doi:10.1099/mgen.0.000144
- 462 9. Guglielmini J, Bourhy P, Schiettekatte O, Zinini F, Brisse S, Picardeau M. Genus-  
463 wide *Leptospira* core genome multilocus sequence typing for strain taxonomy and  
464 global surveillance. *PLoS Negl Trop Dis.* 2019;13.  
465 doi:10.1371/journal.pntd.0007374
- 466 10. Vincent AT, Schiettekatte O, Goarant C, Neela VK, Bernet E, Thibeaux R, et al.  
467 Revisiting the taxonomy and evolution of pathogenicity of the genus *Leptospira*  
468 through the prism of genomics. Martins EAL, editor. *PLoS Negl Trop Dis.* 2019;13:  
469 e0007270. doi:10.1371/journal.pntd.0007270
- 470 11. Casanovas-Massana A, Hamond C, Santos LA, de Oliveira D, Hacker KP,  
471 Balassiano I, et al. *Leptospira yasudae* sp. Nov. and *Leptospira stimsonii* sp. nov.,  
472 two new species of the pathogenic group isolated from environmental sources. *Int J*  
473 *Syst Evol Microbiol.* 2020. doi:10.1099/ijsem.0.003480
- 474 12. Bandaranayaka AK, Vinetz JM, Perera M, Dahanayaka NJ, Weerawansa P,  
475 Priyankara S, et al. Regional Differences of Leptospirosis in Sri Lanka: Observations  
476 from a Flood-Associated Outbreak in 2011. *PLoS Negl Trop Dis.* 2014;8: e2626.  
477 doi:10.1371/journal.pntd.0002626
- 478 13. Nityananda K. Isolation of *Leptospira* in Ceylon. *Ceylon Med J.* 1962;7: 95–6.

- 479 Available: <https://www.cabdirect.org/cabdirect/abstract/19632705150>
- 480 14. Nityananda K SC. A New Leptospiral Serotype in the Icterohaemorrhagiae  
481 Serogroup from Ceylon. Ceylon J Med Sci. 1972;21: 9–13. Available:  
482 [http://archive.cmb.ac.lk:8080/research/bitstream/70130/3637/1/A\\_](http://archive.cmb.ac.lk:8080/research/bitstream/70130/3637/1/A_New_Leptospiral_Serotype.PDF)  
483 [New\\_Leptospiral\\_Serotype.PDF](http://archive.cmb.ac.lk:8080/research/bitstream/70130/3637/1/A_New_Leptospiral_Serotype.PDF)
- 484 15. Nityananda K, Sulzer CR. A new serotype of Leptospira belonging to the autumnalis  
485 serogroup. J Trop Med Hyg. 1971;74: 184–6. Available:  
486 <http://www.ncbi.nlm.nih.gov/pubmed/5570126>
- 487 16. Nityananda K, Sulzer CR. A new leptospiral serotype in the Javanica serogroup from  
488 Ceylon. Trop Geogr Med. 1969;21: 207–209. Available:  
489 <http://archive.cmb.ac.lk:8080/research/handle/70130/3637>
- 490 17. Kokovin IL, Chernukha IG. [Serological classification of leptospirae of the  
491 grippotyphosa serogroup--new serological type ratnapura]. Zh Mikrobiol Epidemiol  
492 Immunobiol. 1970;47: 102–5. Available:  
493 <http://www.ncbi.nlm.nih.gov/pubmed/4251597>
- 494 18. Nityananda K, Harvey T. Leptospirosis\_in\_Ceylon-Epidemiological and Laboratory  
495 Studies. Ceylon J Med Sci. 1971;20: 5–14.
- 496 19. Naotunna C, Agampodi SB, Agampodi TC. Etiological agents causing leptospirosis  
497 in Sri Lanka: A review. Asian Pacific Journal of Tropical Medicine. 2016.  
498 doi:10.1016/j.apjtm.2016.03.009
- 499 20. Nisansala GGT, Muthusinghe D, Gunasekara TDCP, Weerasekera MM, Fernando  
500 SSN, Ranasinghe KNP, et al. Isolation and characterization of Leptospira interrogans  
501 from two patients with leptospirosis in Western Province, Sri Lanka. J Med  
502 Microbiol. 2018 [cited 30 Aug 2018]. doi:10.1099/jmm.0.000800
- 503 21. Seneviratha I, Jayasundara D, Lefler JP, Chaiboonm KL, Warnasekara J, Agampodi

- 504 S, et al. Complete Genome Sequence of *Leptospira interrogans* Strains  
505 FMAS\_KW1, FMAS\_KW2 and FMAS\_AW1 Isolated from Leptospirosis Patients  
506 from Karawanalla and Awissawella, Sri Lanka . J Genomics. 2020;8: 49–52.  
507 doi:10.7150/jgen.43953
- 508 22. Agampodi S, Warnasekara J, Jayasundara D, Senawirathna I, Gamage C, Kularatne  
509 S, et al. Study protocol: Characterising the clinical, epidemiological and aetiological  
510 aspects of leptospirosis in Sri Lanka: A hospital based clinico-epidemiological study.  
511 BMJ Open. 2019;9: 1–8. doi:10.1136/bmjopen-2018-027850
- 512 23. Epidemiologu Unit M of health-2011. G:\Surveillance book.pdf -  
513 Surveillance\_book.pdf. 2nd Editio. Epidemiology Unit,Ministry of Health, Sri  
514 Lanka; 2011 pp. 17–18. Available:  
515 [http://www.epid.gov.lk/web/images/pdf/Publication/Surveillance\\_book.pdf](http://www.epid.gov.lk/web/images/pdf/Publication/Surveillance_book.pdf)
- 516 24. Zhou Z, Alikhan NF, Sergeant MJ, Luhmann N, Vaz C, Francisco AP, et al.  
517 Grapetree: Visualization of core genomic relationships among 100,000 bacterial  
518 pathogens. Genome Res. 2018;28: 1395–1404. doi:10.1101/gr.232397.117
- 519 25. Jolley KA, Cj Maiden M. BIGSdb: Scalable analysis of bacterial genome variation at  
520 the population level. 2010. doi:10.1186/1471-2105-11-595
- 521 26. Letunic I, Bork P. Interactive tree of life (iTOL) v3: an online tool for the display  
522 and annotation of phylogenetic and other trees. Nucleic Acids Res. 2016;44.  
523 doi:10.1093/nar/gkw290
- 524 27. Kmety E, Dikken H. Classification of the species *Leptospira interrogans* and history  
525 of its serovars. 1993. p. 104.
- 526 28. Bourhy P, Collet L, Clément S, Huerre M, Ave P, Giry C, et al. Isolation and  
527 characterization of new *Leptospira* genotypes from patients in Mayotte (Indian  
528 Ocean). PLoS Negl Trop Dis. 2010;4. doi:10.1371/journal.pntd.0000724

- 529 29. Agampodi SB, Matthias MA, Moreno AC, Vinetz JM. Utility of quantitative  
530 polymerase chain reaction in leptospirosis diagnosis: Association of level of  
531 leptospiremia and clinical manifestations in Sri Lanka. *Clin Infect Dis.* 2012;54:  
532 1249–1255. doi:10.1093/cid/cis035
- 533 30. Nalam K, Ahmed A, Devi SM, Francalacci P, Baig M. Genetic Affinities within a  
534 Large Global Collection of Pathogenic *Leptospira*: Implications for Strain  
535 Identification and Molecular Epidemiology. *PLoS One.* 2010;5: 12637.  
536 doi:10.1371/journal.pone.0012637
- 537 31. Bourhy P, Collet L, Lernout T, Zinini F, Hartskeerl RA, Van Der Linden H, et al.  
538 Human *Leptospira* isolates circulating in Mayotte (Indian Ocean) have unique  
539 serological and molecular features. *J Clin Microbiol.* 2012;50: 307–311.  
540 doi:10.1128/JCM.05931-11
- 541 32. Thaipadungpanit J, Wuthiekanun V, Chierakul W, Smythe LD, Petkanchanapong W,  
542 Limpaboon R, et al. A Dominant Clone of *Leptospira interrogans* Associated with  
543 an Outbreak of Human Leptospirosis in Thailand. [cited 3 Mar 2019].  
544 doi:10.1371/journal.pntd.0000056
- 545 33. Zarantonelli L, Suanes A, Meny P, Buroni F, Nieves C, Salaberry X, et al. Isolation  
546 of pathogenic *Leptospira* strains from naturally infected cattle in Uruguay reveals  
547 high serovar diversity, and uncovers a relevant risk for human leptospirosis. *PLoS*  
548 *Negl Trop Dis.* 2018;12. doi:10.1371/journal.pntd.0006694
- 549 34. Wuthiekanun V, Sirisukkarn N, Daengsupa P, Sakaraserane P, Sangkakam A,  
550 Chierakul W, et al. Clinical diagnosis and geographic distribution of leptospirosis,  
551 Thailand. *Emerg Infect Dis.* 2007;13: 124–126. doi:10.3201/eid1301.060718
- 552 35. Kurilung A, Chanchaithong P, Lugsomya K, Niyomtham W, Wuthiekanun V,  
553 Prapasarakul N. Molecular detection and isolation of pathogenic *Leptospira* from



- 554 asymptomatic humans, domestic animals and water sources in Nan province, a rural  
555 area of Thailand. *Res Vet Sci.* 2017;115: 146–154. doi:10.1016/j.rvsc.2017.03.017
- 556 36. Storck CH, Postic D, Lamaury I, Perez JM. Changes in epidemiology of  
557 leptospirosis in 2003-2004, a two El Niño Southern Oscillation period, Guadeloupe  
558 archipelago, French West Indies. *Epidemiol Infect.* 2008;136: 1407–1415.  
559 doi:10.1017/S0950268807000052
- 560 37. Peláez Sanchez RG, Lopez JÁ, Pereira MM, Naranjo MA, Agudelo-F Lórez P.  
561 Genetic diversity of leptospira in northwestern Colombia: First report of leptospira  
562 santarosai as a recognised leptospirosis agent. *Mem Inst Oswaldo Cruz.* 2016;111:  
563 737–744. doi:10.1590/0074-02760160245
- 564 38. Moreno LZ, Miraglia F, Marvulo MFV, Silva JCR, Paula CD, Costa BLP, et al.  
565 Characterization of *Leptospira santarosai* serogroup Grippotyphosa serovar Bananal  
566 isolated from Capybara (*Hydrochaeris hydrochaeris*) in Brazil. *J Wildl Dis.* 2016;52:  
567 688–693. doi:10.7589/2015-09-245
- 568 39. Valverde M de los A, Goris MGA, González V, Anchia ME, Díaz P, Ahmed A, et al.  
569 New serovars of *Leptospira* isolated from patients in Costa Rica: Implications for  
570 public health. *J Med Microbiol.* 2013;62: 1263–1271. doi:10.1099/jmm.0.058545-0
- 571 40. Xu Y, Zheng H, Zhang Y, Wang Y, Zhang J, Li Z, et al. Genomic analysis of a new  
572 serovar of *Leptospira weilii* serogroup Manhao. *Front Microbiol.* 2017;8.  
573 doi:10.3389/fmicb.2017.00149
- 574 41. Haake DA, Dundoo M, Cader R, Kubak BM, Hartskeerl RA, Sejvar JJ, et al.  
575 Leptospirosis, Water Sports, and Chemoprophylaxis. *Clin Infect Dis.* 2002;34: e40–  
576 e43. doi:10.1086/339942
- 577 42. Kurilung A, Chanchaithong P, Lugsomya K, Niyomtham W, Wuthiekanun V,  
578 Prapasarakul N. Molecular detection and isolation of pathogenic *Leptospira* from

- 579 asymptomatic humans, domestic animals and water sources in Nan province, a rural  
580 area of Thailand. *Res Vet Sci.* 2017;115: 146–154.  
581 doi:10.1016/J.RVSC.2017.03.017
- 582 43. Roberts MW, Smythe L, Dohnt M, Symonds M, Slack A. Serologic-based  
583 investigation of leptospirosis in a population of free-ranging eastern grey kangaroos  
584 (*Macropus giganteus*) indicating the presence of *Leptospira weilii* serovar Topaz. *J*  
585 *Wildl Dis.* 2010;46: 564–569. doi:10.7589/0090-3558-46.2.564
- 586 44. Slack AT, Symonds ML, Dohnt MF, Corney BG, Smythe LD. Epidemiology of  
587 *Leptospira weilii* serovar Topaz infections in Australia. *Commun Dis Intell.*  
588 2007;31: 216–222.
- 589 45. Corney BG, Slack AT, Symonds ML, Dohnt MF, McClintock CS, McGowan MR, et  
590 al. *Leptospira weilii* serovar Topaz, a new member of the Tarassovi serogroup  
591 isolated from a bovine source in Queensland, Australia. *Int J Syst Evol Microbiol.*  
592 2008;58: 2249–2252. doi:10.1099/ijs.0.64884-0
- 593 46. Bourhy P, Collet L, Clément S, Huerre M, Ave P, Giry C, et al. Isolation and  
594 characterization of new *Leptospira* genotypes from patients in Mayotte (Indian  
595 Ocean). *PLoS Negl Trop Dis.* 2010;4. doi:10.1371/journal.pntd.0000724
- 596 47. Feresu SB. DNA relatedness of *Leptospira* strains isolated from beef cattle in  
597 Zimbabwe. *Int J Syst Bacteriol.* 1999;49: 1111–1117. doi:10.1099/00207713-49-3-  
598 1111
- 599 48. Mgode GF, Machang'u RS, Goris MG, Engelbert M, Sondij S, Hartskeerl RA. New  
600 *Leptospira* serovar Sokoine of serogroup *Icterohaemorrhagiae* from cattle in  
601 Tanzania. *Int J Syst Evol Microbiol.* 2006;56: 593–597. doi:10.1099/ijs.0.63278-0
- 602 49. Benacer D, Mohd Zain SN, Sim SZ, Mohd Khalid MKN, Galloway RL, Souris M, et  
603 al. Determination of *Leptospira borgpetersenii* serovar Javanica and *Leptospira*

- 604 interrogans serovar Bataviae as the persistent *Leptospira* serovars circulating in the  
605 urban rat populations in Peninsular Malaysia. *Parasites and Vectors*. 2016;9: no  
606 pagination. doi:10.1186/s13071-016-1400-1
- 607 50. Eslabão MR, Kremer FS, Ramos RTJ, Da Silva AL da C, Azevedo VA de C, Pinto L  
608 da S, et al. Genome of *leptospira borgpetersenii* strain 4E, a highly virulent isolate  
609 obtained from *mus musculus* in southern Brazil. *Mem Inst Oswaldo Cruz*. 2018;113:  
610 137–141. doi:10.1590/0074-02760170111
- 611 51. Lau CL, Watson CH, Lowry JH, David MC, Craig SB, Wynwood SJ, et al. Human  
612 *Leptospirosis* Infection in Fiji: An Eco-epidemiological Approach to Identifying  
613 Risk Factors and Environmental Drivers for Transmission. Picardeau M, editor.  
614 *PLoS Negl Trop Dis*. 2016;10: e0004405. doi:10.1371/journal.pntd.0004405
- 615 52. Blanco RM, Romero EC. Fifteen years of human leptospirosis in São Paulo, Brazil. *J*  
616 *Epidemiol Res*. 2015;2: 56. doi:10.5430/jer.v2n1p56
- 617 53. Tubiana S, Mikulski M, Becam J, Lacassin F, Lefèvre P, Gourinat AC, et al. Risk  
618 Factors and Predictors of Severe *Leptospirosis* in New Caledonia. *PLoS Negl Trop*  
619 *Dis*. 2013;7. doi:10.1371/journal.pntd.0001991
- 620 54. Gouveia EL, Metcalfe J, De Carvalho ALF, Aires TSF, Villasboas-Bisneto JC,  
621 Queiroz A, et al. *Leptospirosis*-associated severe pulmonary hemorrhagic  
622 syndrome, Salvador, Brazil. *Emerg Infect Dis*. 2008;14: 505–508.  
623 doi:10.3201/eid1403.071064
- 624 55. Herrmann-Storck C, Saint Louis M, Foucand T, Lamaury I, Deloumeaux J, Baranton  
625 G, et al. Severe leptospirosis in hospitalized patients, Guadeloupe. *Emerg Infect Dis*.  
626 2010. doi:10.3201/eid1602.090139
- 627 56. Nityananda K, Harvey T. *Leptospirosis* in Ceylon epidemiological and laboratory  
628 studies. *Ceylon J Med Sci*. 1971;20: 5–14. Available:

- 629 [https://www.researchgate.net/publication/235020299\\_Leptospirosis\\_in\\_Ceylon\\_-](https://www.researchgate.net/publication/235020299_Leptospirosis_in_Ceylon_-_Epidemiological_and_Laboratory_Investigation)  
630 [\\_Epidemiological\\_and\\_Laboratory\\_Investigation](https://www.researchgate.net/publication/235020299_Leptospirosis_in_Ceylon_-_Epidemiological_and_Laboratory_Investigation)
- 631 57. Gamage CD, Koizumi N, Muto M, Nwafor-Okoli C, Kurukurusuriya S, Rajapakse  
632 JRPV, et al. Prevalence and Carrier Status of Leptospirosis in Smallholder Dairy  
633 Cattle and Peridomestic Rodents in Kandy, Sri Lanka. *Vector-Borne Zoonotic Dis.*  
634 2011;11: 1041–1047. doi:10.1089/vbz.2010.0153
- 635 58. Gamage CD, Koizumi N, Perera AKC, Muto M, Nwafor-Okoli C, Ranasinghe S, et  
636 al. Carrier status of leptospirosis among cattle in Sri Lanka: A zoonotic threat to  
637 public health. *Transbound Emerg Dis.* 2014;61: 91–96. doi:10.1111/tbed.12014
- 638 59. Cameron CE. Leptospiral structure, physiology, and metabolism. *Curr Top*  
639 *Microbiol Immunol.* 2015;387: 21–41. doi:10.1007/978-3-662-45059-8\_3
- 640 60. Wuthiekanun V, Chierakul W, Limmathurotsakul D, Smythe LD, Symonds ML,  
641 Dohnt MF, et al. Optimization of Culture of *Leptospira* from Humans with  
642 *Leptospirosis.* *J Clin Microbiol.* 2007;45: 1363–1365. doi:10.1128/JCM.02430-06
- 643 61. Girault D, Soupé-Gilbert ME, Geroult S, Colot J, Goarant C. Isolation of *Leptospira*  
644 from blood culture bottles. *Diagn Microbiol Infect Dis.* 2017;88: 17–19.  
645 doi:10.1016/j.diagmicrobio.2017.01.014
- 646 62. Meny P, Menéndez C, Quintero J, Hernández E, Ríos C, Balassiano IT, et al.  
647 Characterization of *Leptospira* isolates from humans and the environment in  
648 Uruguay. *Rev Inst Med Trop Sao Paulo.* 2017;59. doi:10.1590/S1678-  
649 9946201759079
- 650 63. Matthias MA, Ricaldi JN, Cespedes M, Diaz MM, Galloway RL, Saito M, et al.  
651 Human leptospirosis caused by a new, antigenically unique *Leptospira* associated  
652 with a *Rattus* species reservoir in the Peruvian Amazon. *PLoS Negl Trop Dis.*  
653 2008;2. doi:10.1371/journal.pntd.0000213

- 654 64. Jorge S, Kremer FS, De Oliveira NR, Navarro GDOSV, Guimarães AM, Sanchez  
655 CD, et al. Whole-genome sequencing of leptospira interrogans from southern Brazil:  
656 Genetic features of a highly virulent strain. Mem Inst Oswaldo Cruz. 2018;113: 80–  
657 86. doi:10.1590/0074-02760170130
- 658 65. Beriwal S, Padhiyar N, Bhatt D, Pandit PD, Ansari A, Lata KS, et al. LeptoDB: an  
659 integrated database of genomics and proteomics resource of Leptospira. Database.  
660 2018;2018. doi:10.1093/database/bay057
- 661 66. Llanes A, Restrepo CM, Rajeev S. Whole genome sequencing allows better  
662 understanding of the evolutionary history of leptospira interrogans serovar hardjo.  
663 PLoS One. 2016;11. doi:10.1371/journal.pone.0159387
- 664 67. Xu Y, Zhu Y, Wang Y, Chang Y-F, Zhang Y, Jiang X, et al. Whole genome  
665 sequencing revealed host adaptation-focused genomic plasticity of pathogenic  
666 Leptospira. Sci Rep. 2016;6: 20020. Available: <https://doi.org/10.1038/srep20020>
- 667 68. Kurilung A, Keeratipusana C, Suriyaphol P, Hampson DJ, Prapasarakul N. Genomic  
668 analysis of Leptospira interrogans serovar Paidjan and Dadas isolates from carrier  
669 dogs and comparative genomic analysis to detect genes under positive selection.  
670 BMC Genomics. 2019;20: 168. doi:10.1186/s12864-019-5562-z
- 671 69. Llanes A, Restrepo CM, Riesgo-Ferreiro P, Rajeev S. Genomic Variability among  
672 Field Isolates and Laboratory-Adapted Strains of Leptospira borgpetersenii Serovar  
673 Hardjo. Int J Microbiol. 2018;2018. doi:10.1155/2018/2137036
- 674

675 **Fig 1. Locations of hospitals used in this study and the ecological zones of Sri Lanka**

676 **Fig 2. Distribution of febrile patients by probable exposure sites/ residence.**

677 **Fig 3. Phylogenetic Tree showing the species and serogroup distribution of the isolates**

678 **from the present study (labelled as FMAS\_) with previously reported Sri Lankan**

679 **isolates and others species.**

680 **4A: isolates, 4B: species, 4C:serogroups. New isolates are having the prefix FMAS**

681 **Fig 4. Genome GrapeTree showing the core-genome relationship among 25 new and**

682 **11 previously isolated *Leptospira* strains from Sri Lanka.**

683 **Fig 5. Geographical distribution of *Leptospira* species, serogroups and clonal groups**

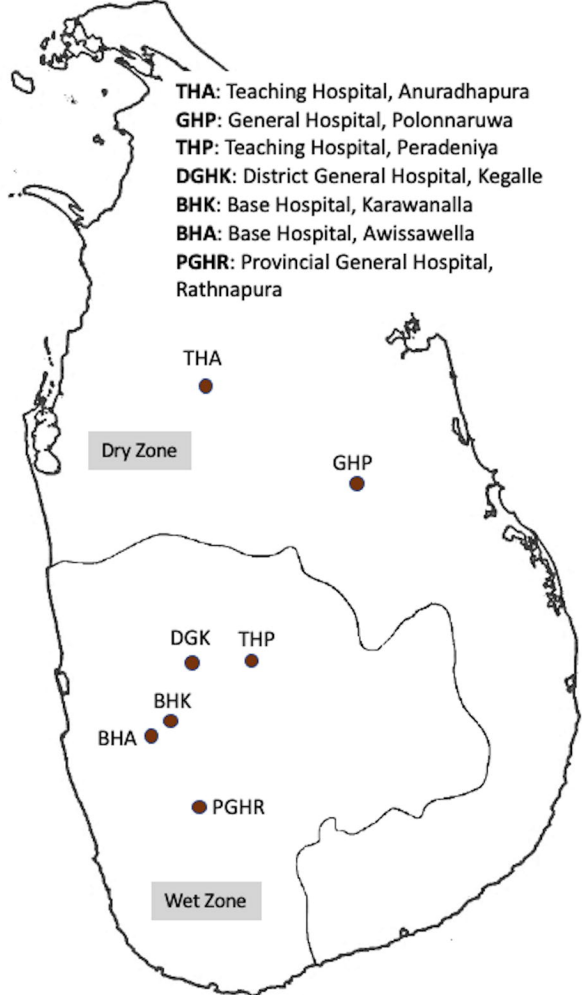
684

685 **Sup.Fig.1: Distribution of incubation period for culture isolation among 25 *Leptospira***

686 **cultures**

687 **Sup.Table 1: Clinical and demographic profile of culture positive patients**

688



The map shows the outline of Sri Lanka, divided into a northern 'Dry Zone' and a southern 'Wet Zone' by a boundary line. Seven hospital locations are marked with brown dots and labeled with abbreviations: THA (north), GHP (northeast), THP (central), DGK (central), BHK (central-west), BHA (west), and PGHR (south-central).

**THA:** Teaching Hospital, Anuradhapura  
**GHP:** General Hospital, Polonnaruwa  
**THP:** Teaching Hospital, Peradeniya  
**DGK:** District General Hospital, Kegalle  
**BHK:** Base Hospital, Karawanalla  
**BHA:** Base Hospital, Awissawella  
**PGHR:** Provincial General Hospital, Rathnapura

THA

Dry Zone

GHP

DGK

THP

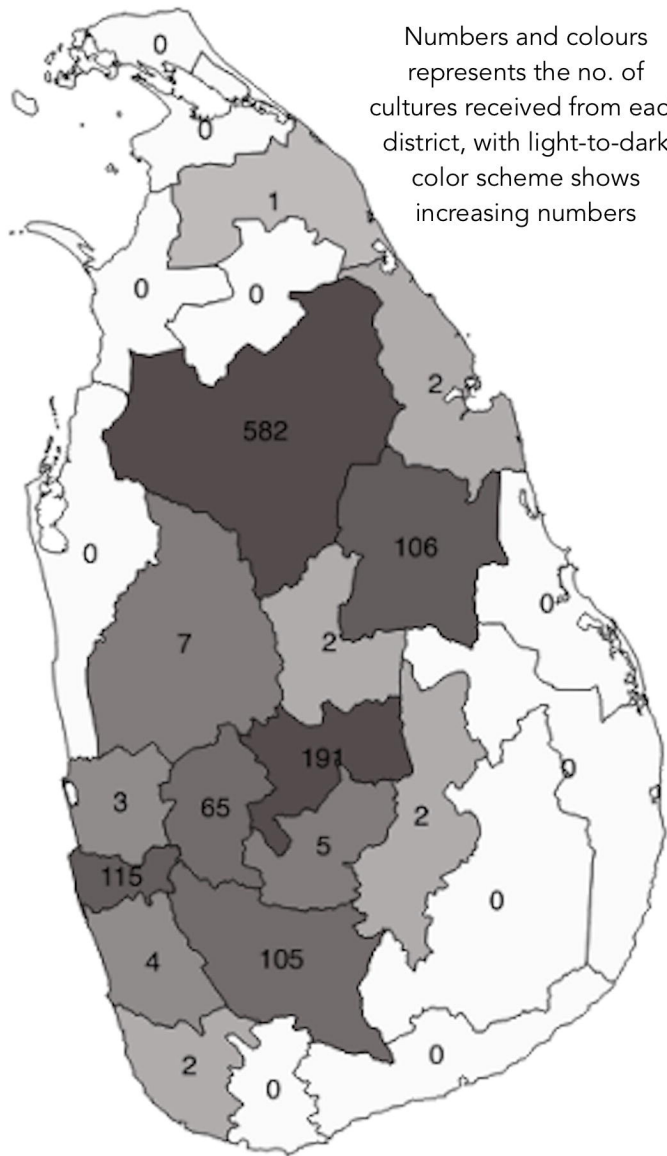
BHK

BHA

PGHR

Wet Zone

Numbers and colours represents the no. of cultures received from each district, with light-to-dark color scheme shows increasing numbers





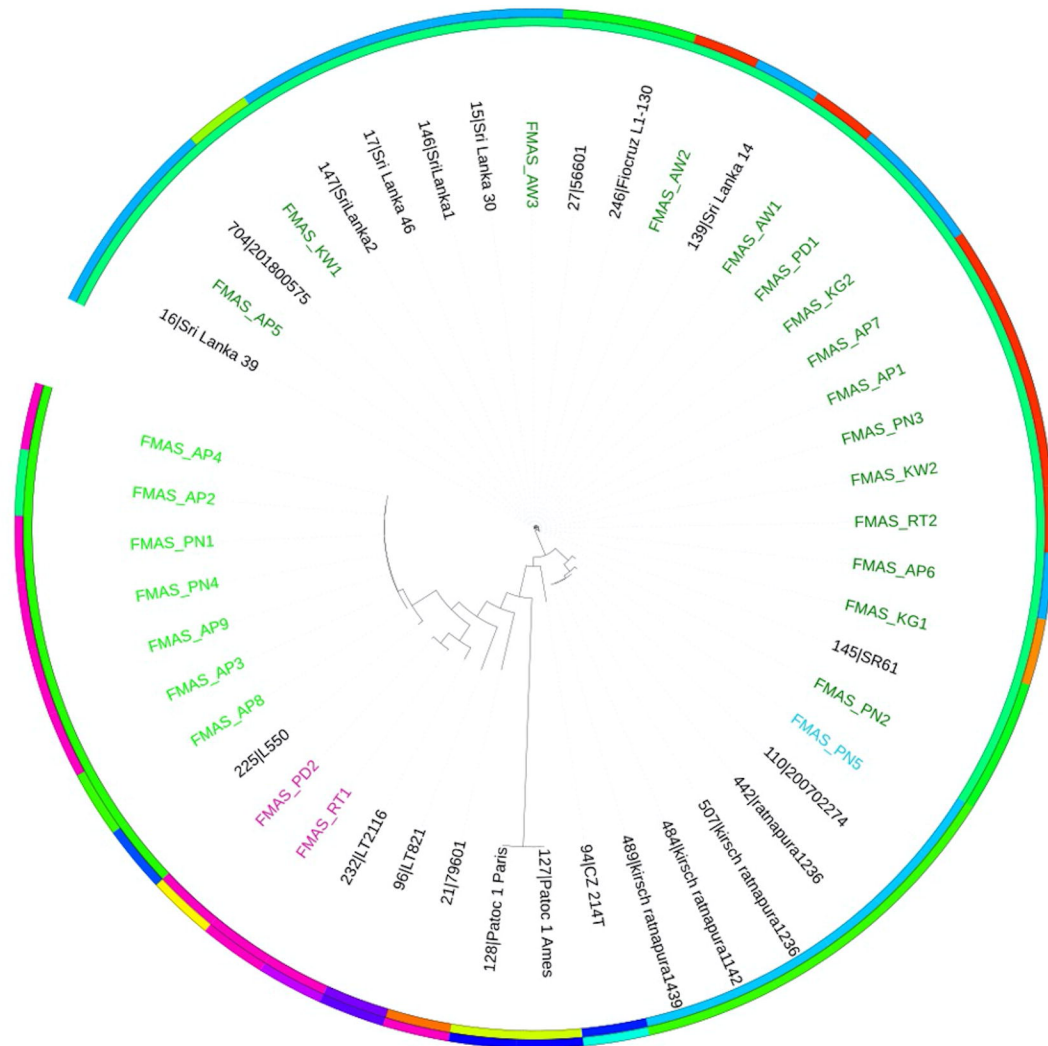
Tree scale: 0.1

### species

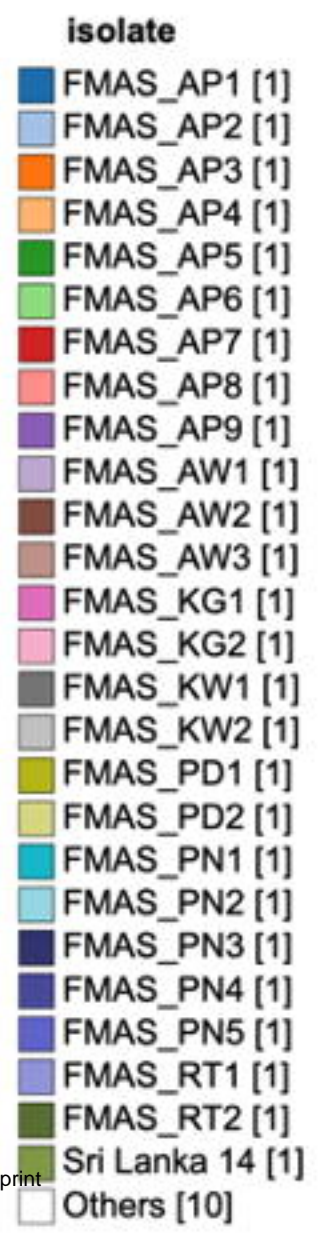
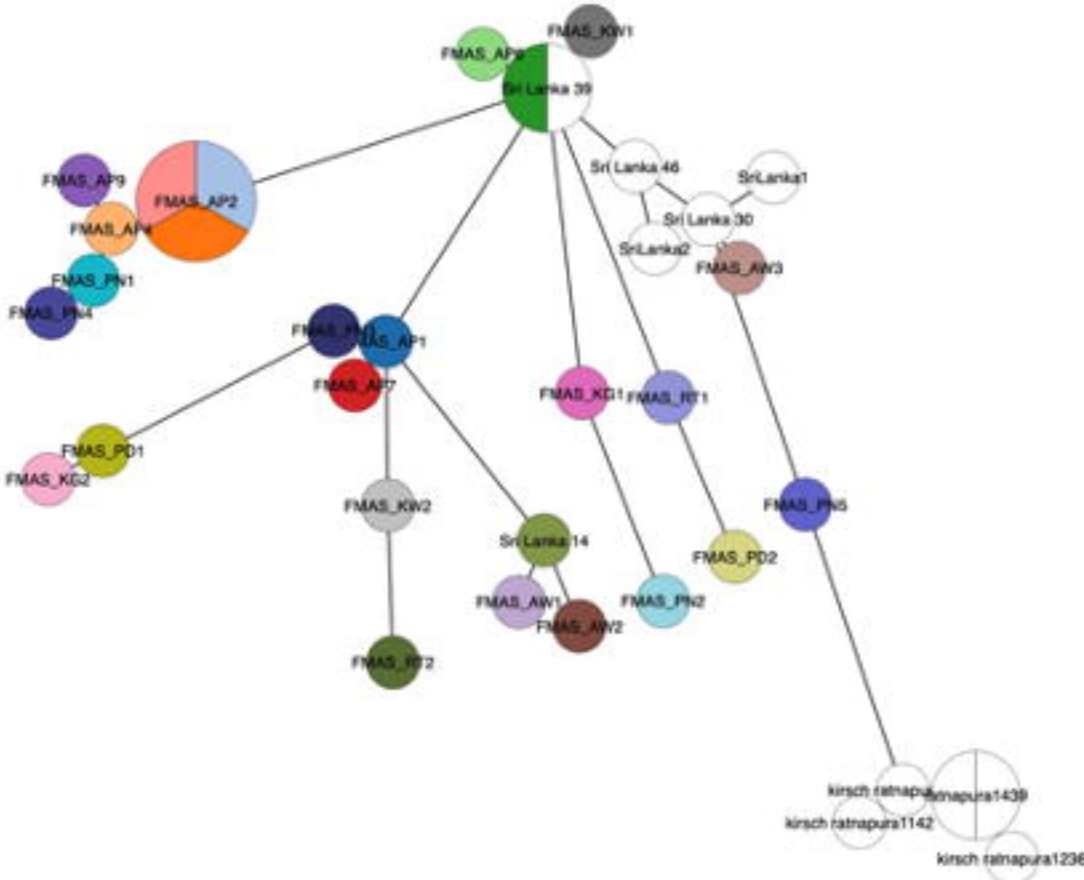
- alstonii
- biflexa
- borgpetersenii
- interrogans
- kirschneri
- noguchii
- santarosai
- weilii

### serogroup

- Autumnalis
- Bataviae
- Celledoni
- Djasiman
- Grippotyphosa
- Icterohaemorrhagiae
- Louisiana
- Panama
- Pyrogenes
- Sejroe
- Semarang
- Shermani
- Tarassovi
- Unknown

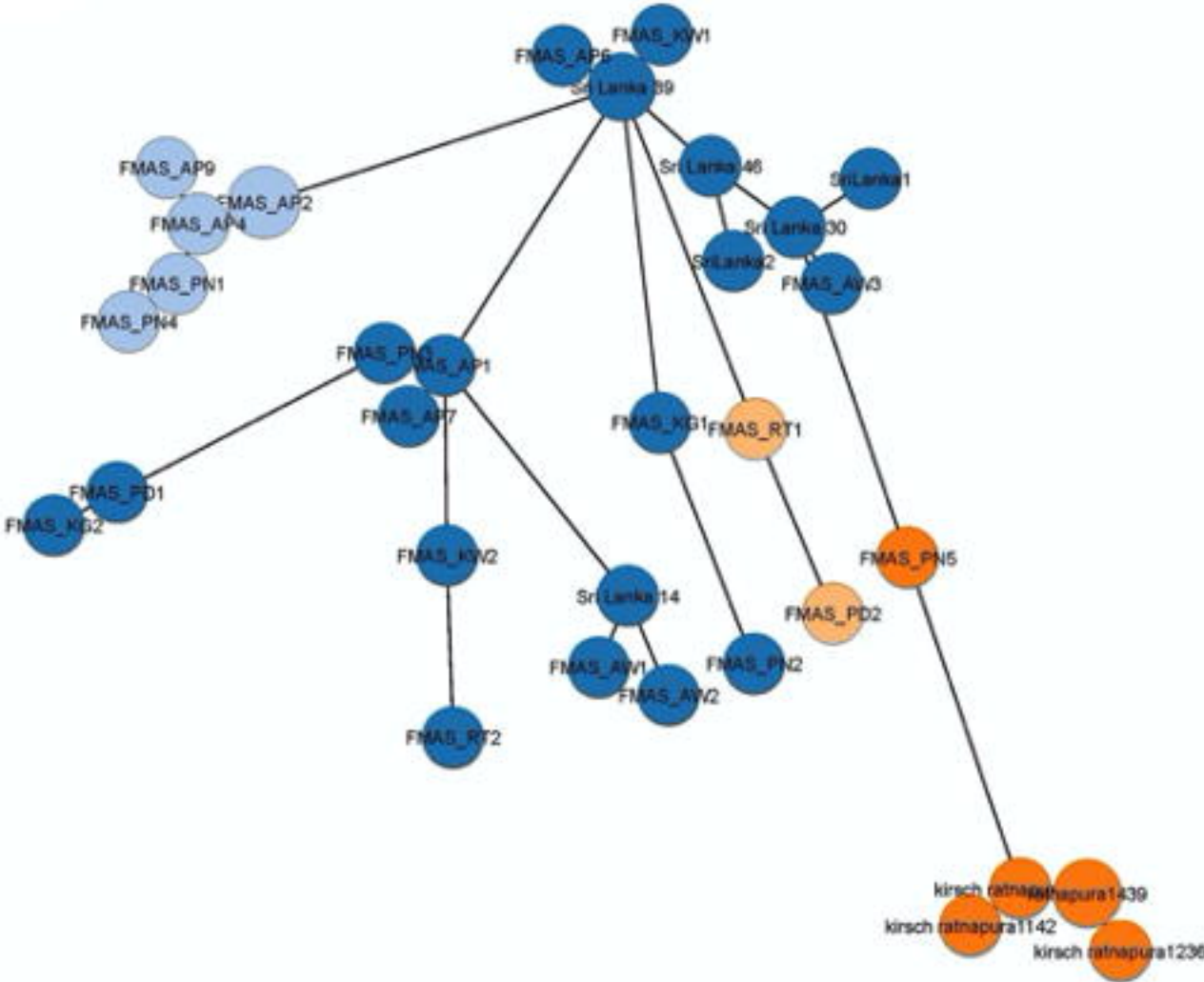


4A



medRxiv preprint doi: <https://doi.org/10.1101/2020.08.28.20177097>; this version posted December 6, 2020. The copyright holder for this preprint (which was not certified by peer review) is the author/funder, who has granted medRxiv a license to display the preprint in perpetuity. It is made available under a [CC-BY-ND 4.0 International license](https://creativecommons.org/licenses/by-nd/4.0/).

4B



4C

