

**Acute kidney injury is associated with severe and fatal outcomes in patients with
Coronavirus disease 2019 (COVID-19) infection: a systematic review and meta-analysis of
observational studies**

Mohammad Parohan^{a*}, PhD, Sajad Yaghoubi^b, PhD, Mahmoud Djalali^a, PhD, Asal Seraji^c, PhD,
Mohammad Hassan Javanbakht^a, PhD, Zahra Mousavi^b, PhD

^aDepartment of Cellular and Molecular Nutrition, School of Nutritional Sciences and Dietetics,
Tehran University of Medical Sciences, Tehran, Iran.

^bDepartment of Clinical Microbiology, Iranshahr University of Medical Sciences, Iranshahr,
Iran.

^cDepartment of Nursing, Damavand Branch, Islamic Azad University, Damavand, Iran.

*Corresponding author:

Mohammad Parohan

Postal address: Tehran University of Medical Sciences, School of Nutritional Sciences and
Dietetics ,44 Hojat Dost St, Naderi St, Enghelab Ave, Tehran, Iran. E-mail address:

prohan.m742@gmail.com, prohan-m@razi.tums.ac.ir, Telephone number: +98 911 143 5978

Abstract

Coronavirus disease 2019 (COVID-19) is a pandemic impacting 213 countries and territories with more than 17,918,582 cases worldwide. Kidney dysfunction has been reported to occur in severe and death cases. This meta-analysis was done to summarize available studies on the association between acute kidney injury and severity of COVID-19 infection. Online databases including Web of Science, PubMed/Medline, Cochrane Library, Scopus and Google Scholar were searched to detect relevant articles up to 1 July 2020, using relevant keywords. To pool data, a random- or fixed-effects model was used based on the heterogeneity between studies. In total, 50 studies with 8,180 COVID-19 confirmed cases (severe cases=1,823 and death cases=775), were included in this meta-analysis. Higher serum levels of creatinine (weighted mean difference (WMD) for disease severity=5.47 $\mu\text{mol/L}$, 95% CI=2.89 to 8.05, $P<0.001$ and WMD for mortality=18.32 $\mu\text{mol/L}$, 95% CI=12.88 to 23.75, $P<0.001$), blood urea nitrogen (BUN) (WMD for disease severity=1.10 mmol/L , 95% CI=0.67 to 1.54, $P<0.001$ and WMD for mortality=3.56 mmol/L , 95% CI=2.65 to 4.48, $P<0.001$) and lower levels of estimated glomerular filtration rate (eGFR) (WMD for disease severity=-15.34 mL/min/1.73 m^2 , 95% CI=-18.46 to -12.22, $P<0.001$ and WMD for mortality=-22.74 mL/min/1.73 m^2 , 95% CI=-27.18 to -18.31, $P<0.001$) were associated with a significant increase in the severity and mortality of COVID-19 infection. Acute kidney injury, as assessed by kidney biomarkers (serum creatinine, BUN and eGFR), was associated with severe outcome and death from COVID-19 infection.

Keywords: COVID-19; Acute kidney injury; Meta-analysis; SARS-CoV-2; Systematic review.

Introduction

Coronavirus disease 2019 (COVID-19) is a global pandemic impacting 213 countries, areas and territories with a total of 17,918,582 confirmed cases and 686,703 deaths worldwide ¹. As the COVID-19 outbreak expands, identification of clinical and laboratory predictors for severe and fatal outcomes are essential to enable risk stratification, guide public health recommendations and optimize allocation of limited hospital resources in the ongoing pandemic.

Genome sequencing showed that the COVID-19 belongs to β genus of Coronavirus, which also includes Middle East respiratory syndrome (MERS) and severe acute respiratory syndrome (SARS) ². Similar to SARS, COVID-19 infection is caused by binding of the virus to the angiotensin-converting enzyme 2 (ACE2) receptors ³. ACE2 receptors are highly expressed in the lungs, kidneys, heart, vascular endothelium, liver and intestinal epithelium, providing a mechanism for the multi-organ dysfunction that can be seen with COVID-19 infection ^{4,5}.

Multiple observational studies have reported the clinical features and laboratory findings associated with acute kidney injury in patients with COVID-19 infection ⁶⁻⁵⁵. In this study, the laboratory findings and mechanism of kidney dysfunction caused by COVID-19 were summarized.

Methods

Study protocol

A systematic literature search was conducted according to the Preferred Reporting Items for Systematic Reviews and Meta-Analyses (PRISMA) guidelines ⁵⁶.

Search strategy

We conducted a systematic search using the online databases of Web of Science, PubMed/Medline, Cochrane Library, Scopus and Google Scholar for relevant articles up to 1 July 2020. The following medical subject headings (MeSH) and non-MeSH terms were used: (“Novel Coronavirus” OR “2019-nCoV” OR “Coronavirus disease 2019” OR “COVID-19” OR “Severe acute respiratory syndrome Coronavirus 2” OR “SARS-CoV-2”) AND (“estimated Glomerular filtration rate” OR “eGFR” OR “Creatinine clearance” OR “Blood Urea Nitrogen” OR “BUN” OR “Creatinine” OR “Kidney diseases” OR “Acute Kidney injury”). The systematic search was done by two reviewers (MP and SY). The reference lists of the relevant articles were also searched to identify missed studies. No restriction was applied to publication year and language. The search results were downloaded into an EndNote library (version X8, Thomson Reuters, Philadelphia, USA) and titles/abstracts assessed for eligibility. The keywords and search strategies are presented in Supplementary Table 1.

Eligibility Criteria

Studies were included in this systematic review and meta-analysis if they met the following inclusion criteria: (1) observational studies (either retrospective or prospective); (2) studies assessing the association between kidney biomarkers (including eGFR, BUN and serum creatinine) and severe outcome or death from COVID-19 infection and reported mean (SD) or median (IQR) for these biomarkers. Reviews, expert opinion articles, books and theses were excluded.

Data extraction and assessment for study quality

Two reviewers (MP and AS) extracted the following data from the included articles: publication year, author's name, study design, demographic characteristics including age and gender, sample size, outcome assessment methods and kidney biomarkers including eGFR, BUN and creatinine.

The Newcastle-Ottawa Scale was used for assessing the quality and risk of bias of included articles⁵⁷. Based on this criteria, a maximum of nine points can be awarded to each article. In this meta-analysis, articles with the Newcastle–Ottawa Scale score of ≥ 5 were considered as high quality studies.

Statistical analysis

Mean (SD) or median (IQR) for eGFR, BUN and serum creatinine were used to estimate the effect size. The fixed or random-effect model was performed depending on the heterogeneity between studies. Heterogeneity between studies was assessed using the Cochrane Q test and I^2 statistics⁵⁸. The publication bias was assessed by the Egger's regression test⁵⁹. The sensitivity analysis was used to evaluate the effect of each study on the pooled effect size. Statistical analyses were performed using the Stata 14 software package (Stata Corp, College Station, TX, USA).

Results

Search results

Overall, 623 articles were identified in our systematic literature search. Of these, 41 non-English, 215 duplicates, 83 reviews and 223 articles that did not fulfill our inclusion criteria were excluded, leaving 61 publications for further evaluation. Out of remaining 61 papers, 11 were excluded because of the following reason: did not report mean (SD) or median (IQR) for kidney biomarkers. Finally, we included 50 articles in this meta-analysis (Figure 1).

Study characteristics

Forty-six studies were conducted in China^{6-17, 19, 20, 22-28, 30-34, 36-43, 45-55, 60}, one in United States²⁹, one in United Kingdom⁴⁴, one in Japan³⁵ and one in Italy²¹. Forty-seven studies used retrospective design^{6, 7, 9-15, 17, 19, 20, 22-55, 60} and three studies used prospective design^{8, 16, 21}. The mean age in severe and non-severe patients were 64.4 and 52.1 years, respectively. The sample size of studies ranged from 10 to 671 participants. All studies used real-time reverse transcriptase–polymerase chain reaction (RT-PCR) method to confirm COVID-19 infection. The characteristics of the studies are presented in Table 1.

Serum levels of creatinine, BUN, eGFR and severity of COVID-19 infection

In the pooled estimate of 36 studies^{6, 8-15, 17, 19, 21-24, 26-35, 37-40, 46, 49, 51, 53-55, 60} with 5,104 COVID-19 confirmed patients (severe cases = 1,796 and non-severe cases = 3,308), it was shown that higher serum levels of creatinine (weighted mean difference = 5.47 $\mu\text{mol/L}$, 95% CI = 2.89 to 8.05, $P < 0.001$, $I^2 = 64.5\%$, $P_{\text{heterogeneity}} < 0.001$) (Figure 2) and BUN (weighted mean difference = 1.10 mmol/L , 95% CI = 0.67 to 1.54, $P < 0.001$, $I^2 = 77.3\%$, $P_{\text{heterogeneity}} < 0.001$) (Figure 3), were associated with a significant increase in the severity of COVID-19 infection. In addition,

combined results from the fixed-effects model showed that lower levels of eGFR (weighted mean difference = -15.34 mL/min/1.73 m², 95% CI = -18.46 to -12.22, P<0.001, I² = 0.0%, P_{heterogeneity} = 0.689) (Figure 4), significantly increased severity of the disease.

Serum levels of creatinine, BUN, eGFR and mortality from COVID-19 infection

Fifteen studies^{7, 13, 16, 20, 25, 36, 41-45, 47, 48, 50, 52} including a total of 3,080 COVID-19 infected patients (non-survivor = 775 and survivor = 2,305) reported mortality as an outcome measure. Pooled analysis showed that higher serum levels of creatinine (weighted mean difference = 18.32 µmol/L, 95% CI = 12.88 to 23.75, P<0.001, I² = 64.1%, P_{heterogeneity} <0.001) (Figure 5), BUN (weighted mean difference = 3.56 mmol/L, 95% CI = 2.65 to 4.48, P<0.001, I² = 72.4%, P_{heterogeneity} = 0.001) (Figure 3) and lower levels of eGFR (weighted mean difference = -22.74 mL/min/1.73 m², 95% CI = -27.18 to -18.31, P<0.001, I² = 43.2%, P_{heterogeneity} = 0.153) (Figure 4), were associated with a significant increase in the mortality of COVID-19 infection.

Publication bias and sensitivity analysis

Based on the visual inspection of funnel plot and the results of Egger's regression test, we found no evidence of publication bias for creatinine (P=0.924) (Supplementary Figure 1) and eGFR (P=0.612) (Supplementary Figure 2). Based on Egger's regression test, publication bias existed for BUN (P=0.024) (Supplementary Figure 3), and we used meta-trim method to re-estimate the effect size. The adjusted weighted mean difference after the trim and fill analysis was 0.73 (95% CI: 0.26 – 1.19, P = 0.002) in the random-effects model. In addition, findings from sensitivity analysis revealed that overall estimates did not depend on a single study.

Discussion

Findings from this meta-analysis showed that kidney dysfunction is associated with severe outcome and death from COVID-19 infection. To our best knowledge, this study is the first meta-analysis to assess the association between kidney biomarkers, in particular eGFR and severity of COVID-19 infection.

The findings from our study are in agreement with previous reviews⁶¹⁻⁶⁴. Previously, kidney injury has been reported as a significant risk factor for severe outcome and death in SARS and MERS^{65, 66}.

COVID-19 may either exacerbate preexisting chronic kidney diseases and/or induce new acute kidney injuries. Earlier studies have shown that the incidence of acute kidney injury in severe COVID-19 patients and death cases ranged from 3.7% to 70.7% and 18.3% to 73.7%, respectively^{10, 25, 37, 45}.

The pathophysiology of COVID-19 associated acute kidney injury could be related to specific and nonspecific mechanisms. Specific mechanisms include direct cellular injury resulting from viral entry through the angiotensin-converting enzyme 2 receptor which is highly expressed in the kidneys^{3, 67}, an imbalanced renin–angiotensin–aldosterone system activation, leading to vasoconstriction, inflammation and fibrosis^{68, 69}, cytokine storm, mediated by increased pro-inflammatory cytokine production after COVID-19 infection⁶¹ and thrombotic events⁷⁰. Nonspecific mechanisms include hypovolemia⁸, right heart failure, hemodynamic changes such as central venous pressure elevation and increased intra-thoracic pressure⁷¹, high levels of positive end-expiratory pressure in patients requiring mechanical ventilation^{72, 73}, nosocomial

sepsis and administration of nephrotoxic drugs, especially antibiotics, antiviral therapy and/or traditional medicine ⁶¹.

Furthermore, increased fraction of inspired oxygen (FiO₂) requirement and respiratory failure can also contribute to renal hypoperfusion and medullary hypoxia resulting from combined effects of third-space fluid loss, endothelial damage and hypotension from COVID-19-induced cytokine release ⁷⁴.

Urine sediments of COVID-19 infected patients showed subnephrotic microhematuria and proteinuria, which are consistent with autopsy findings of kidney tissues of these patients showing proximal tubule injury with erythrocyte aggregates obstructing the peritubular capillaries and tubular necrosis with macrophage infiltration ⁷⁰.

Until effective therapies against COVID-19 become available, the treatment of disease will be primarily based on the treatment of complications. Treatment of kidney complications should be based on optimal use of guideline-based therapies.

This study has some limitations. First, interpretation of results might be limited by the low sample size. Second, the present study did not include data such as smoking history and body mass index and, which are potential risk factors for disease severity.

Conclusion

In this meta-analysis of 8,180 COVID-19 infected patients, acute kidney injury as assessed by serum levels of creatinine, BUN and eGFR was associated with severe outcome and death from COVID-19 infection.

ACKNOWLEDGEMENT

None.

DECLARATION OF INTEREST

The authors report no conflict of interest.

FUNDING

None.

References

1. World Health Organization. Coronavirus disease 2019 (COVID-19): situation report-196. August 3, 2020.
2. Zhu N, Zhang D, Wang W, Li X, Yang B, Song J, et al. A Novel Coronavirus from Patients with Pneumonia in China, 2019. *N Engl J Med*. 2020;382(8):727-33.
3. Hoffmann M, Kleine-Weber H, Schroeder S, Krüger N, Herrler T, Erichsen S, et al. SARS-CoV-2 Cell Entry Depends on ACE2 and TMPRSS2 and Is Blocked by a Clinically Proven Protease Inhibitor. *Cell*. 2020;181(2):271-80.e8.
4. Tikellis C, Thomas MC. Angiotensin-Converting Enzyme 2 (ACE2) Is a Key Modulator of the Renin Angiotensin System in Health and Disease. *Int J Pept*. 2012;2012:256294.
5. Zhang H, Penninger JM, Li Y, Zhong N, Slutsky AS. Angiotensin-converting enzyme 2 (ACE2) as a SARS-CoV-2 receptor: molecular mechanisms and potential therapeutic target. *Intensive Care Med*. 2020;46(4):586-90.
6. Chen G, Wu D, Guo W, Cao Y, Huang D, Wang H, et al. Clinical and immunologic features in severe and moderate Coronavirus Disease 2019. *J Clin Invest*. 2020.
7. Chen T, Wu D, Chen H, Yan W, Yang D, Chen G, et al. Clinical characteristics of 113 deceased patients with coronavirus disease 2019: retrospective study. *BMJ*. 2020;368:m1091.
8. Huang C, Wang Y, Li X, Ren L, Zhao J, Hu Y, et al. Clinical features of patients infected with 2019 novel coronavirus in Wuhan, China. *Lancet*. 2020;395(10223):497-506.
9. Mo P, Xing Y, Xiao Y, Deng L, Zhao Q, Wang H, et al. Clinical characteristics of refractory COVID-19 pneumonia in Wuhan, China. *Clin Infect Dis*. 2020.
10. Wan S, Xiang Y, Fang W, Zheng Y, Li B, Hu Y, et al. Clinical features and treatment of COVID-19 patients in northeast Chongqing. *J Med Virol*. 2020.
11. Wang D, Hu B, Hu C, Zhu F, Liu X, Zhang J, et al. Clinical Characteristics of 138 Hospitalized Patients With 2019 Novel Coronavirus-Infected Pneumonia in Wuhan, China. *JAMA*. 2020.
12. Wang Z, Yang B, Li Q, Wen L, Zhang R. Clinical Features of 69 Cases with Coronavirus Disease 2019 in Wuhan, China. *Clin Infect Dis*. 2020.
13. Wu C, Chen X, Cai Y, Xia J, Zhou X, Xu S, et al. Risk Factors Associated With Acute Respiratory Distress Syndrome and Death in Patients With Coronavirus Disease 2019 Pneumonia in Wuhan, China. *JAMA Intern Med*. 2020.
14. Zhang X, Cai H, Hu J, Lian J, Gu J, Zhang S, et al. Epidemiological, clinical characteristics of cases of SARS-CoV-2 infection with abnormal imaging findings. *Int J Infect Dis*. 2020.
15. Du RH, Liu LM, Yin W, Wang W, Guan LL, Yuan ML, et al. Hospitalization and Critical Care of 109 Decedents with COVID-19 Pneumonia in Wuhan, China. *Ann Am Thorac Soc*. 2020.
16. Du RH, Liang LR, Yang CQ, Wang W, Cao TZ, Li M, et al. Predictors of Mortality for Patients with COVID-19 Pneumonia Caused by SARS-CoV-2: A Prospective Cohort Study. *Eur Respir J*. 2020.
17. Lo IL, Lio CF, Cheong HH, Lei CI, Cheong TH, Zhong X, et al. Evaluation of SARS-CoV-2 RNA shedding in clinical specimens and clinical characteristics of 10 patients with COVID-19 in Macau. *Int J Biol Sci*. 2020;16(10):1698-707.
18. Wang L, He W, Yu X, Hu D, Bao M, Liu H, et al. Coronavirus disease 2019 in elderly patients: Characteristics and prognostic factors based on 4-week follow-up. *J Infect*. 2020.
19. Zheng F, Tang W, Li H, Huang YX, Xie YL, Zhou ZG. Clinical characteristics of 161 cases of coronavirus disease 2019 (COVID-19) in Changsha. *Eur Rev Med Pharmacol Sci*. 2020;24(6):3404-10.
20. Ruan Q, Yang K, Wang W, Jiang L, Song J. Clinical predictors of mortality due to COVID-19 based on an analysis of data of 150 patients from Wuhan, China. *Intensive Care Med*. 2020.
21. Antinori S, Cossu MV, Ridolfo AL, Rech R, Bonazzetti C, Pagani G, et al. Compassionate remdesivir treatment of severe Covid-19 pneumonia in intensive care unit (ICU) and Non-ICU patients:

- Clinical outcome and differences in post-treatment hospitalisation status. *Pharmacol Res.* 2020;158:104899.
22. Cao Z, Li T, Liang L, Wang H, Wei F, Meng S, et al. Clinical characteristics of Coronavirus Disease 2019 patients in Beijing, China. *PLoS One.* 2020;15(6):e0234764.
 23. Chen C, Wang H, Liang Z, Peng L, Zhao F, Yang L, et al. Predicting Illness Severity and Short-Term Outcomes of COVID-19: A Retrospective Cohort Study in China. *The Innovation.* 2020;1(1).
 24. Chen Q, Zheng Z, Zhang C, Zhang X, Wu H, Wang J, et al. Clinical characteristics of 145 patients with corona virus disease 2019 (COVID-19) in Taizhou, Zhejiang, China. *Infection.* 2020:1-9.
 25. Deng Y, Liu W, Liu K, Fang YY, Shang J, Zhou L, et al. Clinical characteristics of fatal and recovered cases of coronavirus disease 2019 in Wuhan, China: a retrospective study. *Chin Med J (Engl).* 2020;133(11):1261-7.
 26. Feng Y, Ling Y, Bai T, Xie Y, Huang J, Li J, et al. COVID-19 with different severities: a multicenter study of clinical features. *Am J Respir Crit Care Med.* 2020;201(11):1380-8.
 27. Gao Y, Li T, Han M, Li X, Wu D, Xu Y, et al. Diagnostic utility of clinical laboratory data determinations for patients with the severe COVID-19. *J Med Virol.* 2020;92(7):791-6.
 28. Gong J, Ou J, Qiu X, Jie Y, Chen Y, Yuan L, et al. A Tool to Early Predict Severe Corona Virus Disease 2019 (COVID-19) : A Multicenter Study using the Risk Nomogram in Wuhan and Guangdong, China. *Clin Infect Dis.* 2020.
 29. Goyal P, Choi JJ, Pinheiro LC, Schenck EJ, Chen R, Jabri A, et al. Clinical Characteristics of Covid-19 in New York City. *N Engl J Med.* 2020;382(24):2372-4.
 30. Xie H, Zhao J, Lian N, Lin S, Xie Q, Zhuo H. Clinical characteristics of non-ICU hospitalized patients with coronavirus disease 2019 and liver injury: A retrospective study. *Liver Int.* 2020;40(6):1321-6.
 31. Hong KS, Lee KH, Chung JH, Shin KC, Choi EY, Jin HJ, et al. Clinical Features and Outcomes of 98 Patients Hospitalized with SARS-CoV-2 Infection in Daegu, South Korea: A Brief Descriptive Study. *Yonsei Med J.* 2020;61(5):431-7.
 32. Hou W, Zhang W, Jin R, Liang L, Xu B, Hu Z. Risk factors for disease progression in hospitalized patients with COVID-19: a retrospective cohort study. *Infect Dis (Lond).* 2020;52(7):498-505.
 33. Huang R, Zhu L, Xue L, Liu L, Yan X, Wang J, et al. Clinical findings of patients with coronavirus disease 2019 in Jiangsu province, China: A retrospective, multi-center study. *PLoS Negl Trop Dis.* 2020;14(5):e0008280.
 34. Jin A, Yan B, Hua W, Feng D, Xu B, Liang L, et al. Clinical characteristics of patients diagnosed with COVID-19 in Beijing. *Biosafety and Health.* 2020.
 35. Kato H, Shimizu H, Shibue Y, Hosoda T, Iwabuchi K, Nagamine K, et al. Clinical course of 2019 novel coronavirus disease (COVID-19) in individuals present during the outbreak on the Diamond Princess cruise ship. *J Infect Chemother.* 2020;26(8):865-9.
 36. Li D, Chen Y, Liu H, Jia Y, Li F, Wang W, et al. Immune dysfunction leads to mortality and organ injury in patients with COVID-19 in China: insights from ERS-COVID-19 study. *Signal Transduct Target Ther.* 2020;5(1):62.
 37. Li Y, Hu Y, Yu J, Ma T. Retrospective analysis of laboratory testing in 54 patients with severe- or critical-type 2019 novel coronavirus pneumonia. *Lab Invest.* 2020;100(6):794-800.
 38. Liu W, Tao ZW, Wang L, Yuan ML, Liu K, Zhou L, et al. Analysis of factors associated with disease outcomes in hospitalized patients with 2019 novel coronavirus disease. *Chin Med J (Engl).* 2020;133(9):1032-8.
 39. Pei G, Zhang Z, Peng J, Liu L, Zhang C, Yu C, et al. Renal Involvement and Early Prognosis in Patients with COVID-19 Pneumonia. *J Am Soc Nephrol.* 2020;31(6):1157-65.
 40. Qian GQ, Yang NB, Ding F, Ma AHY, Wang ZY, Shen YF, et al. Epidemiologic and Clinical Characteristics of 91 Hospitalized Patients with COVID-19 in Zhejiang, China: A retrospective, multi-centre case series. *QJM.* 2020.

41. Shi Q, Zhang X, Jiang F, Zhang X, Hu N, Bimu C, et al. Clinical Characteristics and Risk Factors for Mortality of COVID-19 Patients With Diabetes in Wuhan, China: A Two-Center, Retrospective Study. *Diabetes Care*. 2020;43(7):1382-91.
42. Shi S, Qin M, Cai Y, Liu T, Shen B, Yang F, et al. Characteristics and clinical significance of myocardial injury in patients with severe coronavirus disease 2019. *Eur Heart J*. 2020;41(22):2070-9.
43. Sun H, Ning R, Tao Y, Yu C, Deng X, Zhao C, et al. Risk Factors for Mortality in 244 Older Adults With COVID-19 in Wuhan, China: A Retrospective Study. *J Am Geriatr Soc*. 2020;68(6):E19-e23.
44. Tomlins J, Hamilton F, Gunning S, Sheehy C, Moran E, MacGowan A. Clinical features of 95 sequential hospitalised patients with novel coronavirus 2019 disease (COVID-19), the first UK cohort. *J Infect*. 2020.
45. Wang D, Yin Y, Hu C, Liu X, Zhang X, Zhou S, et al. Clinical course and outcome of 107 patients infected with the novel coronavirus, SARS-CoV-2, discharged from two hospitals in Wuhan, China. *Crit Care*. 2020;24(1):188.
46. Wang F, Yang Y, Dong K, Yan Y, Zhang S, Ren H, et al. CLINICAL CHARACTERISTICS OF 28 PATIENTS WITH DIABETES AND COVID-19 IN WUHAN, CHINA. *Endocr Pract*. 2020;26(6):668-74.
47. Wang K, Zuo P, Liu Y, Zhang M, Zhao X, Xie S, et al. Clinical and laboratory predictors of in-hospital mortality in patients with COVID-19: a cohort study in Wuhan, China. *Clin Infect Dis*. 2020.
48. Wang L, He W, Yu X, Hu D, Bao M, Liu H, et al. Coronavirus disease 2019 in elderly patients: Characteristics and prognostic factors based on 4-week follow-up. *J Infect*. 2020;80(6):639-45.
49. Wu J, Li W, Shi X, Chen Z, Jiang B, Liu J, et al. Early antiviral treatment contributes to alleviate the severity and improve the prognosis of patients with novel coronavirus disease (COVID-19). *J Intern Med*. 2020;288(1):128-38.
50. Yan Y, Yang Y, Wang F, Ren H, Zhang S, Shi X, et al. Clinical characteristics and outcomes of patients with severe covid-19 with diabetes. *BMJ Open Diabetes Res Care*. 2020;8(1).
51. Yang F, Shi S, Zhu J, Shi J, Dai K, Chen X. Clinical characteristics and outcomes of cancer patients with COVID-19. *J Med Virol*. 2020.
52. Yang X, Yu Y, Xu J, Shu H, Xia J, Liu H, et al. Clinical course and outcomes of critically ill patients with SARS-CoV-2 pneumonia in Wuhan, China: a single-centered, retrospective, observational study. *Lancet Respir Med*. 2020;8(5):475-81.
53. Yu T, Cai S, Zheng Z, Cai X, Liu Y, Yin S, et al. Association Between Clinical Manifestations and Prognosis in Patients with COVID-19. *Clin Ther*. 2020;42(6):964-72.
54. Zhang G, Hu C, Luo L, Fang F, Chen Y, Li J, et al. Clinical features and short-term outcomes of 221 patients with COVID-19 in Wuhan, China. *J Clin Virol*. 2020;127:104364.
55. Zhou Y, Han T, Chen J, Hou C, Hua L, He S, et al. Clinical and Autoimmune Characteristics of Severe and Critical Cases of COVID-19. *Clin Transl Sci*. 2020.
56. Moher D, Liberati A, Tetzlaff J, Altman DG. Preferred reporting items for systematic reviews and meta-analyses: the PRISMA statement. *Ann Intern Med*. 2009;151(4):264-9.
57. Stang A. Critical evaluation of the Newcastle-Ottawa scale for the assessment of the quality of nonrandomized studies in meta-analyses. *Eur J Epidemiol*. 2010;25(9):603-5.
58. Higgins JP, Thompson SG, Deeks JJ, Altman DG. Measuring inconsistency in meta-analyses. *BMJ: British Medical Journal*. 2003;327(7414):557.
59. Egger M, Smith GD, Schneider M, Minder C. Bias in meta-analysis detected by a simple, graphical test. *BMJ*. 1997;315(7109):629-34.
60. Jiang Y, He S, Zhang C, Wang X, Chen X, Jin Y, et al. Clinical characteristics of 60 discharged cases of 2019 novel coronavirus-infected pneumonia in Taizhou, China. *Ann Transl Med*. 2020;8(8):547.
61. Gabarre P, Dumas G, Dupont T, Darmon M, Azoulay E, Zafrani L. Acute kidney injury in critically ill patients with COVID-19. *Intensive Care Med*. 2020:1-10.

62. Chen YT, Shao SC, Hsu CK, Wu IW, Hung MJ, Chen YC. Incidence of acute kidney injury in COVID-19 infection: a systematic review and meta-analysis. *Crit Care*. 2020;24(1):346.
63. Ali H, Daoud A, Mohamed MM, Salim SA, Yessayan L, Baharani J, et al. Survival rate in acute kidney injury superimposed COVID-19 patients: a systematic review and meta-analysis. *Ren Fail*. 2020;42(1):393-7.
64. Fanelli V, Fiorentino M, Cantaluppi V, Gesualdo L, Stallone G, Ronco C, et al. Acute kidney injury in SARS-CoV-2 infected patients. *Crit Care*. 2020;24(1):155.
65. Rong Y, Chang W, Liu Y, Xuemei M, Chang B, Yang Y, et al. Damage to non-pulmonary organs like heart and kidney in SARS patients: An analysis of 330 cases. *Academic Journal of Second Military Medical University*. 2000(08).
66. Yeung M-L, Yao Y, Jia L, Chan JF, Chan K-H, Cheung K-F, et al. MERS coronavirus induces apoptosis in kidney and lung by upregulating Smad7 and FGF2. *Nature microbiology*. 2016;1(3):1-8.
67. Pan X-w, Da Xu HZ, Zhou W, Wang L-h, Cui X-g. Identification of a potential mechanism of acute kidney injury during the COVID-19 outbreak: a study based on single-cell transcriptome analysis. *Intensive Care Med*. 2020:1.
68. Vaduganathan M, Vardeny O, Michel T, McMurray JJ, Pfeffer MA, Solomon SD. Renin-angiotensin-aldosterone system inhibitors in patients with Covid-19. *N Engl J Med*. 2020;382(17):1653-9.
69. Malha L, Mueller FB, Pecker MS, Mann SJ, August P, Feig PU. COVID-19 and the Renin-Angiotensin System. *Kidney Int Rep*. 2020;5(5):563-5.
70. Su H, Yang M, Wan C, Yi LX, Tang F, Zhu HY, et al. Renal histopathological analysis of 26 postmortem findings of patients with COVID-19 in China. *Kidney Int*. 2020;98(1):219-27.
71. Joannidis M, Forni LG, Klein SJ, Honore PM, Kashani K, Ostermann M, et al. Lung-kidney interactions in critically ill patients: consensus report of the Acute Disease Quality Initiative (ADQI) 21 Workgroup. *Intensive Care Med*. 2020;46(4):654-72.
72. Imai Y, Parodo J, Kajikawa O, de Perrot M, Fischer S, Edwards V, et al. Injurious mechanical ventilation and end-organ epithelial cell apoptosis and organ dysfunction in an experimental model of acute respiratory distress syndrome. *JAMA*. 2003;289(16):2104-12.
73. Ranieri VM, Giunta F, Suter PM, Slutsky AS. Mechanical ventilation as a mediator of multisystem organ failure in acute respiratory distress syndrome. *JAMA*. 2000;284(1):43-4.
74. Ronco C, Reis T. Kidney involvement in COVID-19 and rationale for extracorporeal therapies. *Nat Rev Nephrol*. 2020;16(6):308-10.

Figure legends

Fig. 1 Flow chart of study selection

Fig. 2 Forest plot for the association between serum levels of creatinine and severe outcome from COVID-19 infection using random-effects model

Fig. 3 Forest plot for the association between BUN levels and severe outcome or death from COVID-19 infection using random-effects model

Fig. 4 Forest plot for the association between levels of eGFR and severe outcome or death from COVID-19 infection using fixed-effects model

Fig. 5 Forest plot for the association between serum levels of creatinine and mortality from COVID-19 infection using random-effects model

Supporting Information

Supplementary table 1. Systematic literature review search terms and strategy.

Supplementary Figure 1. Funnel plot for the association between serum levels of creatinine and severity of COVID-19 infection.

Supplementary Figure 2. Funnel plot for the association between eGFR and severity of COVID-19 infection.

Supplementary Figure 3. Funnel plot for the association between BUN levels and severity of COVID-19 infection.

Table 1. Characteristics of studies included in the meta-analysis.

Authors (year)	Design of study	Country	Mean age (y)	Sample size	Sex	COVID-19 ^a detection	Serum levels in severe/death cases (mean±SD) ^b	Serum levels in mild/recovered cases (mean±SD)
Antinori S et al. (2020)	Prospective	Italy	60.5	35 Severe cases: 18 Mild cases: 17	F/M	real-time RT-PCR	Cr: 84±55.01	Cr:89.3±22.27
Cao Z et al. 2020	Retrospective	China	71	80 Severe cases: 27 Mild cases: 53	F/M	real-time RT-PCR	Cr:78± 26.70 eGFR:91.2±23.48	Cr:61±16.29 eGFR:108.2±18.22
Chen C et al. (2020)	Retrospective	China	61	417 Severe cases: 92 Mild cases: 325	F/M	real-time RT-PCR	Cr:72± 26.66 eGFR:92.5±18.97	Cr:60±17.77 eGFR:108.53±16.10
Chen G et al. (2020)	Retrospective	China	61	21 Severe cases: 11 Mild cases: 10	F/M	real-time RT-PCR	BUN: 6.1±2.8 Cr: 82.0±17.77	BUN: 4.0±1.03 Cr: 76.5±13.11
Chen Q et al. (2020)	Retrospective	China	52.8	145 Severe cases: 43 Mild cases: 102	F/M	real-time RT-PCR	BUN: 4.5±1.92 Cr:74±20.74	BUN:4±1.22 Cr:74±16.29
Chen Ta et al. (2020)	Retrospective	China	59.5	274 Death cases: 113 Recovered cases: 161	F/M	real-time RT-PCR	BUN:8.4±5.11 Cr:88±35.55	BUN:4±1.55 Cr:66±22.22
Deng Y et al. (2020)	Retrospective	China	69	225 Death cases: 109 Recovered cases: 116	F/M	real-time RT-PCR	Cr:89±45.55	Cr:65±17.88
Du RH et al. (2020) (a)	Retrospective	China	68.4	109 Severe cases: 51 Mild cases: 58	F/M	real-time RT-PCR	BUN:7.3±2.44 Cr:71±20.74	BUN:7.7±4.96 Cr:85.5±29.85
Du RH et al. (2020) (b)	Prospective	China	70.2	179 Death cases: 21 Recovered cases: 158	F/M	real-time RT-PCR	Cr:95±36.29	Cr:65±18.51
Feng Y et al. (2020)	Retrospective	China	61	422 Severe cases: 70 Mild cases: 352	F/M	real-time RT-PCR	BUN:5.65±2.54 Cr:67.95±19.29 eGFR: 96±32.59	BUN:4.6±1.64 Cr:65.46±17.55 eGFR:108 ±34.07
Gao Y et al. (2020)	Retrospective	China	45.2	43 Severe cases: 15 Mild cases: 28	F/M	real-time RT-PCR	BUN:4.51±1.67 Cr:65.33±15.55	BUN:4.09±1.29 Cr:66.96±13.38
Gong J et al. (2020)	Retrospective	China	63.5	189 Severe cases: 28 Mild cases: 161	F/M	real-time RT-PCR	BUN:4.7±3.03 Cr:57±28.29	BUN:3.9±1.03 Cr:58.8±21.55
Goyal P et al. (2020)	Retrospective	United States	64.5	393 Severe cases: 130 Mild cases: 263	F/M	real-time RT-PCR	BUN:5.71±4.02	BUN:5.36±2.91
Hansheng X et	Retrospective	China	62.5	79	F/M	real-time RT-PCR	Cr:68.7±14.44	Cr:70.2±16

al. (2020)				Severe cases: 28 Mild cases: 51				
Hong KS et al. (2020)	Retrospective	China	63.2	98 Severe cases: 13 Mild cases: 85	F/M	real-time RT-PCR	BUN:7.14±4.07 Cr:88.42±26.53	BUN:5.21±3.21 Cr:70.74±44.2
Hou W et al. (2020)	Retrospective	China	72.4	101 Severe cases: 17 Mild cases: 84	F/M	real-time RT-PCR	Cr:77.3±24.88 eGFR:91.2±22.37	Cr:62.9±16.07 eGFR:105.3±18.37
Huang C et al. (2020)	Prospective	China	49.0	41 Severe cases: 13 Mild cases: 28	F/M	real-time RT-PCR	Cr:79±29.33	Cr:73.3±20.14
Huang R et al. (2020)	Retrospective	China	49	202 Severe cases: 23 Mild cases: 179	F/M	real-time RT-PCR	Cr:79.1±12.88	Cr:64±16.44
Jiang Y et al. (2020)	Retrospective	China	58	60 Severe cases: 8 Mild cases: 52	F/M	real-time RT-PCR	Cr:75.1±9.3	Cr:79.1±19.6
Jin A et al. (2020)	Retrospective	China	74.7	45 Severe cases: 20 Mild cases: 25	F/M	real-time RT-PCR	BUN:9±6.66 Cr:72.5±23.11 eGFR: 85±19.11	BUN:3.2±1.70 Cr:61±16.29 eGFR:99.5±14.74
Kato H et al. (2020)	Retrospective	Japan	69	70 Severe cases: 43 Mild cases: 27	F/M	real-time RT-PCR	BUN:5.54±1.77 Cr:76.04±26.2	BUN:5.54±2.77 Cr:65.43±9.82
Li D et al. (2020)	Retrospective	China	69.15	163 Death cases:27 Recovered cases: 136	F/M	real-time RT-PCR	BUN:8.43±6.0 Cr:67±41.48	BUN:4.81±1.92 Cr:61±18.51
Li Y et al. (2020)	Retrospective	China	61.8	54 Severe cases: 23 Mild cases:31	F/M	real-time RT-PCR	eGFR: 73.44±27.58	eGFR: 96.2±25.51
Liu W et al. (2020)	Retrospective	China	66	78 Severe cases: 11 Mild cases:67	F/M	real-time RT-PCR	Cr:64.5±20.37	Cr:71.75±48.90
Lo IL et al. (2020)	Retrospective	China	61	10 Severe cases: 4 Mild cases: 6	F/M	real-time RT-PCR	Cr:58±16	Cr:66±15
Mo P et al. (2020)	Retrospective	China	61	155 Severe cases: 85 Mild cases: 70	F/M	real-time RT-PCR	Cr:79±22.96	Cr:65±14.81
Pei G et al. (2020)	Retrospective	China	63.1	200 Severe cases: 56 Mild cases: 144	F/M	real-time RT-PCR	BUN:5.9±2.96 Cr:77±21.48	BUN:3.9±1.40 Cr:66.5±18.51
Qian GQ et al. (2020)	Retrospective	China	66	91 Severe cases: 9 Mild cases: 82	F/M	real-time RT-PCR	BUN:5.19±1.09 Cr:81.5±14.63	BUN: 3.83±0.85 Cr:66±14.07
Ruan Q et al. (2020)	Retrospective	China	68	150 Death cases: 68 Recovered cases: 82	F/M	real-time RT-PCR	BUN:8.65±4.5 Cr:91.2±56.2	BUN:5.11±2.1 Cr:72.1±22.2

Shi Q et al. (2020)	Retrospective	China	72	153 Death cases: 16 Recovered cases: 137	F/M	real-time RT-PCR	Cr:73.5±28.07 eGFR:73±25.03	Cr:61±18.74 eGFR:97.04±16.66
Shi Sh et al. (2020)	Retrospective	China	74	671 Death cases: 62 Recovered cases: 609	F/M	real-time RT-PCR	Cr:87±74.81 eGFR:67±43.7	Cr:55±11.11 eGFR:99±11.11
Sun H et al. (2020)	Retrospective	China	72	244 Death cases: 121 Recovered cases: 123	F/M	real-time RT-PCR	Cr:90±31.11 eGFR:69.9±27.18	Cr:66±20.74 eGFR:89±15.62
Tomlins J et al. (2020)	Retrospective	United Kingdom	77	95 Death cases: 20 Recovered cases: 75	F/M	real-time RT-PCR	Cr:117±36.29	Cr:87±40
Wan S et al. (2020)	Retrospective	China	56	135 Severe cases: 40 Mild cases: 95	F/M	real-time RT-PCR	Cr:63.5±16.88	Cr:66±17.77
Wang D et al. (2020) (a)	Retrospective	China	66	138 Severe cases: 36 Mild cases: 102	F/M	real-time RT-PCR	BUN:5.9±3.92 Cr:80±29.63	BUN:4±1.48 Cr:71±19.25
Wang D et al. (2020) (b)	Retrospective	China	73	107 Death cases: 19 Recovered cases:88	F/M	real-time RT-PCR	BUN:6.1±4.01 Cr:87±43.70	BUN:3.9±1.25 Cr:68±18.51
Wang F et al. (2020)	Retrospective	China	71.4	28 Severe cases: 14 Mild cases:14	F/M	real-time RT-PCR	BUN:9.2±3.03 Cr:85.5±25.55	BUN:5±1.85 Cr:74±24.66
Wang K et al. (2020)	Retrospective	China	65.6	296 Death cases: 19 Recovered cases:277	F/M	real-time RT-PCR	BUN:6.2±2.44 Cr:81.4±36.14 eGFR:74±34.7	BUN:3.9±1.40 Cr:62.5±17.55 eGFR:104±22.5
Wang L et al. (2020)	Retrospective	China	76	339 Death cases: 65 Recovered cases: 274	F/M	real-time RT-PCR	BUN:8.9±6.07 Cr:80±43.7	BUN:5.1±2.29 Cr:60±16.29
Wang Z et al. (2020)	Retrospective	China	70.5	69 Severe cases: 14 Mild cases: 55	F/M	real-time RT-PCR	Cr:71.5±20.66	Cr:65.3±15.18
Wu C et al. (2020) (a,b)	Retrospective	China	58.5	201 Severe cases: 84 Mild cases: 117 84 Death cases: 44 Recovered cases: 40	F/M	real-time RT-PCR	Severe cases: BUN:5.8±2.55 Cr:74.6±25.51 Non-survivor: BUN: 7.4±2.7 Cr:73 ±21.6	Mild cases: BUN:4.3±1.48 Cr:68.7±17.48 Survivor: BUN:4.9 ±2.1 Cr:78.6 ±24.8
Wu J et al. (2020)	Retrospective	China	63.04	280 Severe cases: 83 Mild cases: 197	F/M	real-time RT-PCR	BUN:4.4±3.03 Cr:62.8±20.74	BUN:4±1.33 Cr:57.6±18.66

Yan Y et al. (2020)	Retrospective	China	70.5	48 Death cases: 39 Recovered cases: 9	F/M	real-time RT-PCR	BUN:9.5±4.81 Cr:88±30.37	BUN:2.9±1.40 Cr:65±19.25
Yang F et al. (2020)	Retrospective	China	63	52 Severe cases: 19 Mild cases: 33	F/M	real-time RT-PCR	Cr:73 ±36.29	Cr:57±13.33
Yang X et al. (2020)	Retrospective	China	64.6	52 Death cases: 32 Recovered cases: 20	F/M	real-time RT-PCR	Cr:80.7±32	Cr:76.3±27.4
Yu T et al. (2020)	Retrospective	China	45.92	95 Severe cases: 24 Mild cases: 71	F/M	real-time RT-PCR	Cr:81.42±65.9	Cr :61.9±18
Zhang G et al. (2020)	Retrospective	China	62	221 Severe cases: 55 Mild cases: 166	F/M	real-time RT-PCR	BUN:5.8±3.11 Cr:75±32.59	BUN:4±1.25 Cr:67±17.77
Zhang X et al. (2020)	Retrospective	China	46.65	645 Severe cases: 573 Mild cases: 72	F/M	real-time RT-PCR	BUN:4.04±1.69 Cr:69.17±24.5	BUN: 3.9 ± 1.13 Cr:65.54±13.16
Zheng F et al. (2020)	Retrospective	China	57	161 Severe cases: 30 Mild cases: 131	F/M	real-time RT-PCR	Cr:47.5±18.51	Cr:48.3±14.14
Zhou Y et al. (2020)	Retrospective	China	67.38	21 Severe cases: 13 Mild cases: 8	F/M	real-time RT-PCR	BUN:6.91±2.95 Cr:60.42±24.45 eGFR:97.14±22.73	BUN:9.52±7.9 Cr:70.75±54.93 eGFR:91.65±37.54

Abbreviations: ^aCOVID-19: Coronavirus diseases 2019, ^bCr: Creatinine, BUN: Blood Urea Nitrogen, eGFR: estimated Glomerular filtration rate

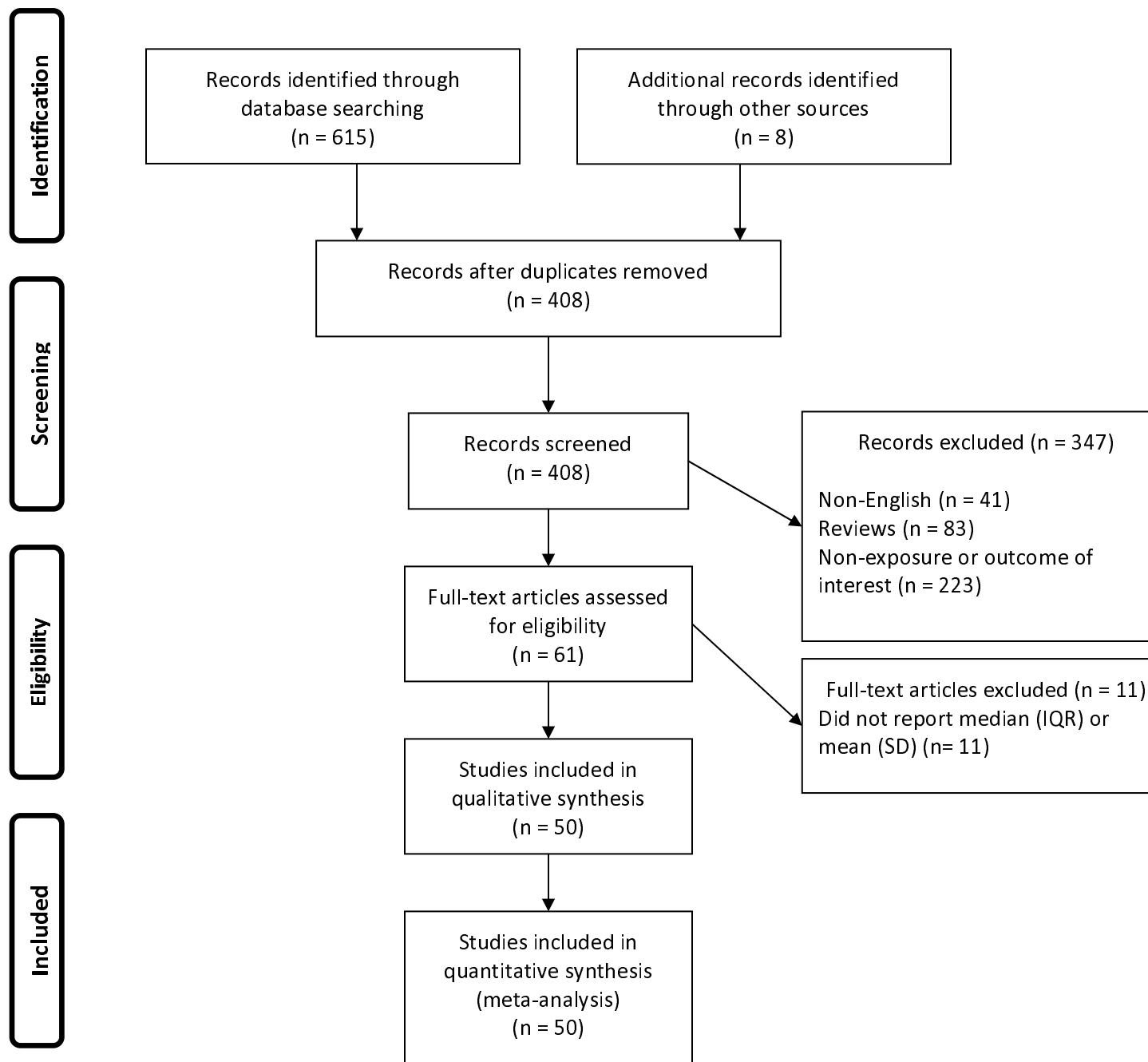


Fig. 1

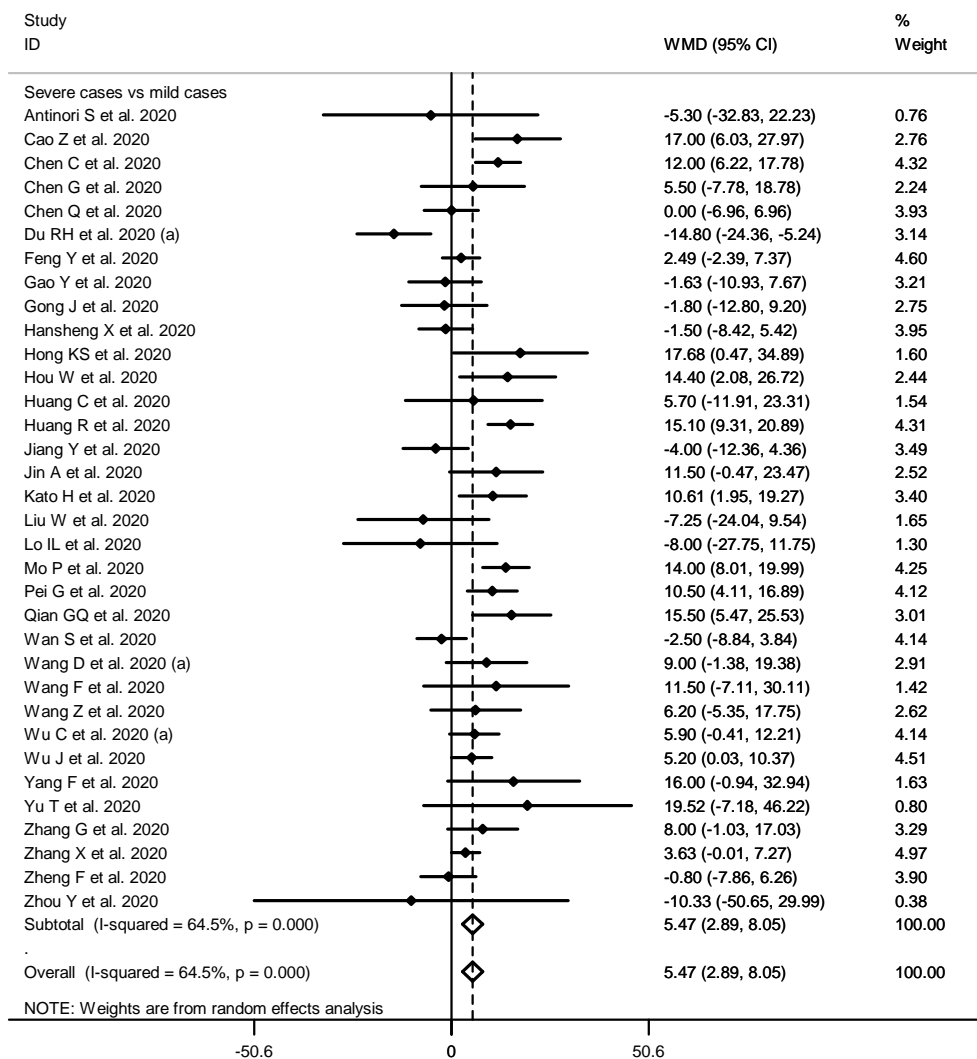


Fig. 2

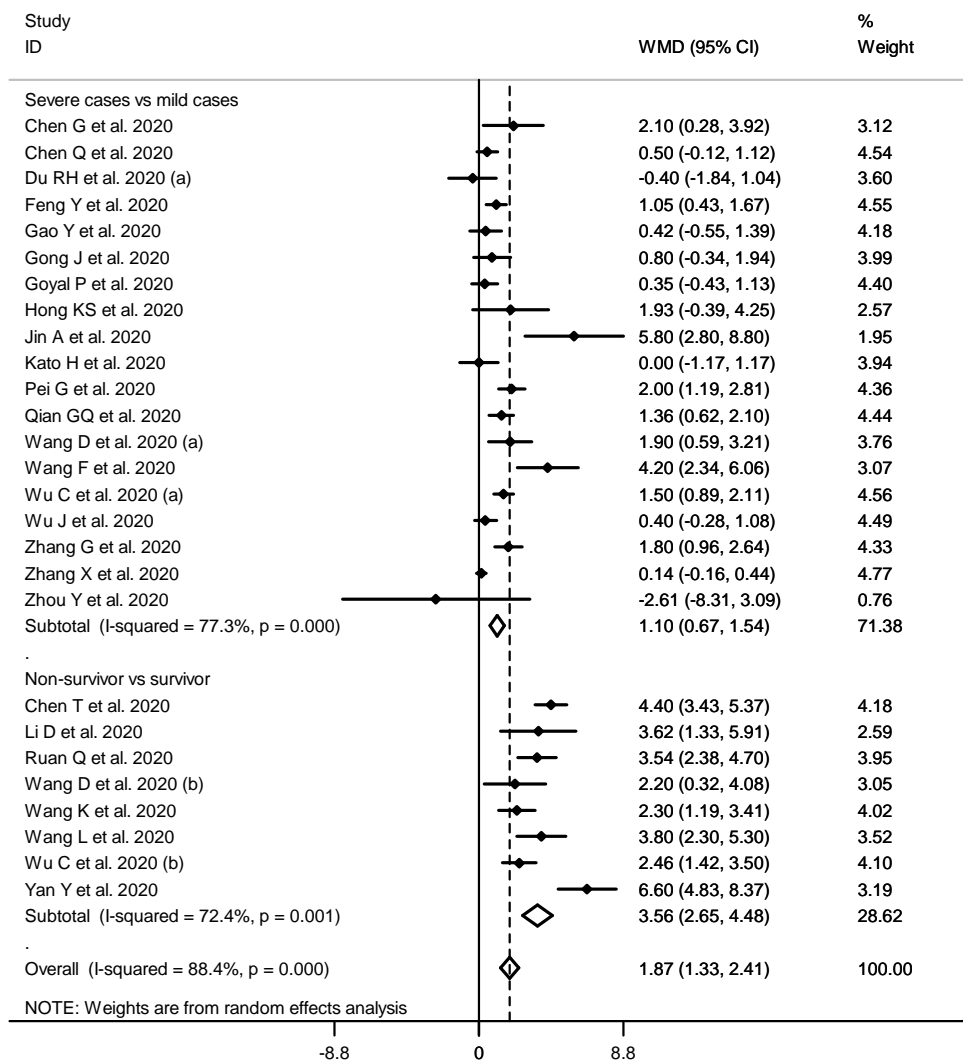


Fig. 3

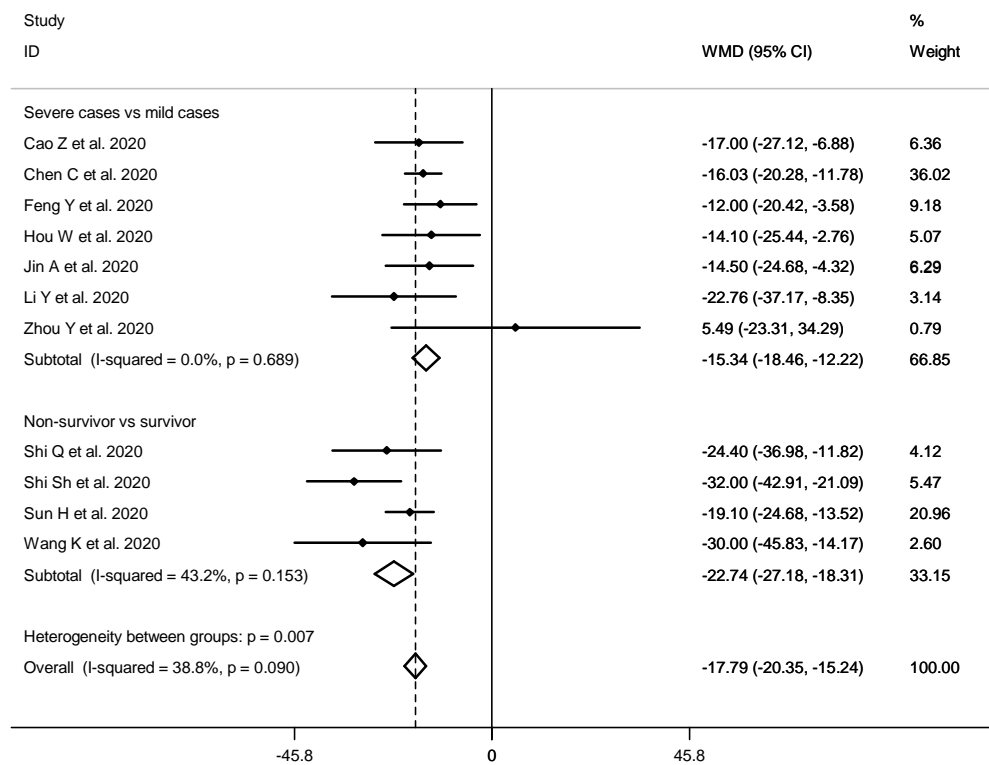


Fig. 4

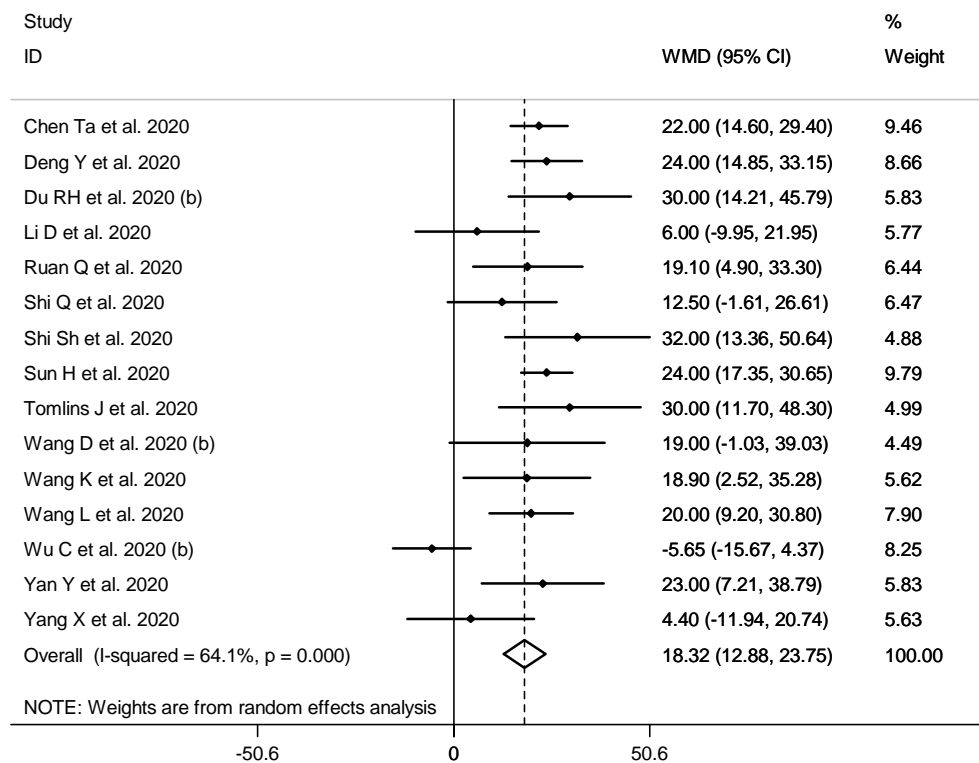


Fig. 5