

1 **The impact of the COVID-19 pandemic on mental health in the general population – a comparison**
2 **between Germany and the UK**

3

4 **Franziska Knolle^{a,b,*}, Lisa Ronan^b, Graham K. Murray^{b,c}**

5 ^a Department of Diagnostic and Interventional Neuroradiology, School of Medicine, Technical
6 University of Munich, Munich, Germany

7 ^b Department of Psychiatry, University of Cambridge, Cambridge UK

8 ^c Cambridgeshire and Peterborough NHS Foundation Trust, Cambridge, United Kingdom

9

10 *franziska.knolle@tum.de

11

12 **Abstract**

13 Background: The COVID-19 pandemic has led to dramatic social and economic changes in daily life.
14 First studies report an impact on mental health of the general population showing increased levels
15 of anxiety, stress and depression. In this study, we compared the impact of the pandemic on two
16 culturally and economically similar European countries: the UK and Germany. Methods: Participants
17 (UK=241, German=541) completed an online-survey assessing COVID-19 exposure, impact on
18 financial situation and work, substance and media consumption, mental health using the tSymptom-
19 Check-List-27 (SCL-27) and the Schizotypal Personality Questionnaire. Results: We found distinct
20 differences between the two countries. UK responders reported a stronger direct impact on health,
21 financial situation and families. UK responders had higher clinical scores on the SCL-27, and higher
22 prevalence. Interestingly, German responders were less hopeful for an end of the pandemic and
23 more concerned about their life-stability. Conclusion: As 25% of both German and UK responders
24 reported a subjective worsening of the general psychological symptoms and 20-50% of German and
25 UK responders reached the clinical cut-off for depressive and dysthymic symptoms as well as
26 anxieties, it specifically shows the need for tailored intervention systems to support large
27 proportions of the general public.

28

29 **Keywords**

30 COVID-19, mental health, general population, SPQ, depression

31

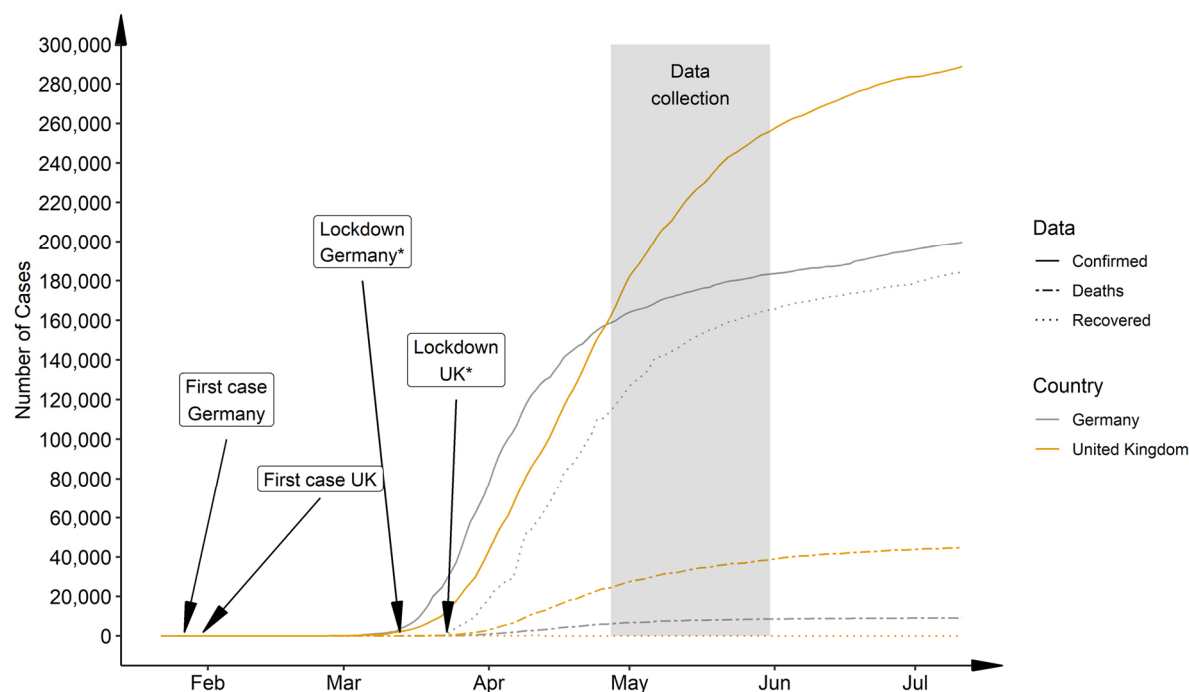
32 Introduction

33 The world health organisation (WHO) declared the outbreak of the coronavirus disease 2019 SARS-
34 CoV-2 (COVID-19) a pandemic on March 11, 2020 (WHO-Media-Briefing). In order to slow down a
35 rapid spread across and within countries, many government responded with strict measures,
36 including lockdown with school and work-place closures, self-isolation and social distancing, border
37 closures, restrictions of travel, to reduce the transmission of the virus. On March 18, 2020 the WHO
38 published a statement presenting mental health and psychosocial considerations for the general
39 public, acknowledging the potential impact of this public health emergency on mental health of the
40 general population [2]. As the COVID-19 outbreak compared to other recent pandemics or medical
41 emergencies is much larger in scale, its consequences are unprecedented and therefore more difficult
42 to predict. The seriousness of the measures taken to control the outbreak have led to immediate
43 and serious concerns on mental health of the general society [3] with calls for urgent and direct
44 actions [4]. From former epidemics, as recently reviewed by Brooks and colleagues [5], such as the
45 2003 epidemic of the severe acute respiratory syndrome (SARS) or the 2014 outbreak of Ebola, we
46 know that quarantine, isolation and social distancing is related to anxiety, depression, sleep
47 disorders, etc. In the current pandemic, however, entire countries were locked-down for much
48 longer periods of time. Increase of job insecurity and economic hardship [6, 7], as well as domestic
49 violence [8, 9], substance abuse [10] and media consumption [11, 12] have been discussed as risk
50 factors for impacting mental health. First studies (e.g. [13–15]) confirm increased levels of stress,
51 anxiety, depressive symptoms, sleep disorders as well as an increase in suicidal ideation, etc, also in
52 the current pandemic.

53 In response to the outbreak and spread of the pandemic, different countries even within Europe
54 followed different strategies. Germany went into lockdown rapidly and managed to control the
55 increase of infections effectively, whereas the UK due to a delayed lockdown faced a much higher
56 plateau (see Figure 1)[16] which also led to an increase in numbers of deaths that were at the end of
57 April 2020 20% higher than predicted, whereas Germany was nearly 3% lower than expected.
58 Balmford and colleagues (2020) used epidemiological models to estimate the “price of life” that
59 various nations were willing to pay in order to protect their people. According to their estimation the
60 German government was prepared to pay a factor of 10 more per life than the UK, in April 2020. It is
61 to be expected that these different strategies and governmental choices have an impact on the
62 nation’s mental well-being. We were therefore interesting in comparing the mental health impact of
63 the pandemic on the general population of the UK and Germany, using an online survey investigating
64 the impact on life circumstances and assessing mental health with two different psychological
65 questionnaires (Symptom Check List, SCL-27; Schizotypal Personality Questionnaire, SPQ). We

66 hypothesised that responders of both nations, UK and Germany, would report an increase in
67 psychological symptoms, but that the increase would be stronger in UK responders. We
68 supplemented the general mental health questionnaire SCL-27 with the SPQ, as we reasoned that a
69 potential increase in anxiety and distress could be accompanied by an increase in psychotic-like
70 experiences [17] that could be captured in the SPQ.

71



72

73 Figure 1. National progression of COVID-19 cases, deaths and recoveries comparing Germany and
74 the UK from Jan. 22,2020 – Jul. 11,2020. Recovery rate UK: after April 12., 2020 recovered cases are
75 not reported for the UK. *Germany followed a state-wise lockdown, with the first state going in lock-
76 down on Mar.13,2020 and the last state on the Mar. 16, 2020. UK announced nationwide lockdown
77 on Mar.23, 2020. Data taken from the 2019 Novel CoronaVirus CoViD-19 (2019-nCoV) Data
78 Repository by Johns Hopkins University Center for Systems Science and Engineering (JHU CSSE)
79 (<https://github.com/CSSEGISandData/COVID-19>) on Jul. 11, 2020

80

81

82

83

84 **Methods**

85 *Study design and procedure*

86 The questionnaire assessing mental and physical health and COVID-19 exposure was designed as an
87 online survey using EvaSys (<https://www.evasys.de>, Electric Paper Evaluationssysteme GmbH,
88 Lüneburg, Germany). The questionnaire was available in German and English. For participant
89 recruitment we used a snowball sampling strategy to reach the general public. Data collection took
90 place from 27/04/2020 -31/05/2020. The completion of the survey took approximately 35 min.
91 Participation was voluntary. Participants did not receive any compensation.

92 Ethical approval was obtained from the Ethical Commission Board of the Technical University
93 Munich (250/20 S). All participants provided informed consent.

94

95 *Outcome*

96 The survey consisted of three parts. The first part, partially comprised of the Coronavirus Health
97 Impact Survey (CRISIS, <http://www.crisissurvey.org/>), which assessed demographics, COVID-19
98 exposure (infection status, symptoms, contact), mental and physical health questions. In the second
99 part, we assessed the general mental health status (global severity of symptom index (GSI-27)) using
100 the Symptom Check List (SCL) with 27 items [18, 19] and its subdimensions. For all SCL-items we
101 recorded the subjective change during the pandemic compared to before. In the third part, using the
102 Schizotypy Personality Questionnaire (SPQ, [20]) we evaluated total schizotypic symptoms (SPQ-
103 total), subdimensions [21], and subjective change per item.

104

105 *Statistical analysis*

106 Statistical analysis and visualisations were computed using R (RStudio Team (2020). RStudio:
107 Integrated Development for R. RStudio, PBC, Boston, MA URL <http://www.rstudio.com/>). We first
108 describe demographics and COVID-19 exposure variables, using *non-parametric* analysis. For the
109 country comparison we used a chi-square test *or a Wilcox test for categorical and continuous*
110 *variables respectively* to explore differences between the groups on the demographics and the
111 COVID-19 exposure variables.

112 *To further explore the differences between the UK and Germany and timepoints in the CRISIS*
113 *variables, we conducted robust ANOVAs [22] with country (UK, Germany) and timepoint (before*
114 *pandemic (i.e., subjective rating) and during pandemic) as between-subjects factor.*

115 To identify possible predictors for worse or better functioning, we furthermore applied multivariate
116 Poisson regression models to assess the associations between the outcome and the predictor
117 variables. Our outcome variables were continuous scores measured using the SCL-27 and the SPQ.
118 We investigated total score (SPQ-total, GSI-27) as well as subscales for the SPQ and the SCL-27.
119

120 **Results**

121 *Demographics*

122 The survey was complete by 860 participants. Two participants did not provide consent and were
123 excluded. 6 participants did not consent to sharing the data publicly, and will be removed from the
124 open-access data set. In this paper we focus on the comparison of respondents resident in the UK
125 (N=239) and in Germany (N=541). All descriptive and statistical results are described in Table 1.

126

127 *COVID-19 Exposure, Impact and Personal Judgement*

128 To explore differences between the countries we used chi-square tests. All results on COVID-19
129 Exposure, specifically on infection rates (Suppl.Fig.3), symptoms (Suppl.Fig.4), contacts (Suppl.Fig.5),
130 work impact (Suppl.Fig.6), family impact (Suppl.Fig.7), and financial impact are presented in Table 1,
131 COVID-19 Exposure.

132 In general the restrictions were rated similarly stressful between the two countries. UK responders
133 were less concerned about their overall life stability. UK responders were also more hopeful that the
134 pandemic in their region would soon be under control. All findings are presented in Table 1, Personal
135 judgement of the situation.

136 UK responders rated their mental health status lower compared to the German responders. Also
137 more UK responders received regular treatment for their mental illnesses before the pandemic. The
138 treatment was continued similarly during the pandemic across the two countries. Physical health
139 was judged similarly across the two countries. Regular treatment for physical illnesses was similar
140 between the two countries and the treatment continued in a similar fashion. All findings are
141 presented in Table 1, Mental and physical health status.

142

143 *Self-report on sleep, mental health, exercise/outdoor activities, media consumption, and*
144 *substance/alcohol consumption before and during the pandemic*

145 [Investigating the differences between the countries and timepoints with regard to the CRISIS](#)
146 [variables, we applied robust ANOVAs. Means, main effects and interactions for all variables are](#)
147 [presented in Table 2.](#)

148 For the variable *sleep*, sleeping patterns differ during the week differed significantly between the
149 countries ($p=0.005$) and the timepoints ($p=0.005$), and in an interaction effect of country by time
150 point ($p=0.005$).

151 The amount of *exercise* differed significantly between the countries ($p<0.001$), but there is no
152 significant change during the pandemic or an interaction.

153 Analysing *media consumption*, for use of social media and print media we found significant country
154 (both $p<0.001$) and time-point ($p=0.18$ and $p<0.001$, respectively) effects. We did not find
155 differences in the consumption of TV and digital media. Differences for consumption of video games
156 could not be calculated due to insufficient endorsement.

157 For the *consumption of substances*, consumption patterns of *alcohol* differed significantly different
158 between countries ($p=0.027$) but no time-point effect or interaction was found. Differences for
159 consumption of *tobacco*, *marihuana* and *heroin/opiates* could not be calculated due to insufficient
160 endorsement or change.

161 Regarding self-reported *mental well-being*, there was an effect of time point (min. $p=0.003$) for all
162 items and a country effect for *concerned* ($p=0.02$), *enjoy activities* ($p<0.001$), *relaxed* ($p<0.001$),
163 *focused* ($p<0.001$), and *irritated* ($p<0.001$). For *focused*, scores changed differently between the two
164 countries from before to during the pandemic ($p=0.005$).

165 *Effects of the pandemic on psychological symptoms using the Symptom Check List – 27-Point (SCL-27)*

166 *General Symptom Index*

167 A Wilcoxon-test for non-parametric data, showed that the distribution of the GSI was different
168 between the two countries ($W=84062$, $p\text{-value} = 1.515e-11$, 95%-confidence interval: 0.148-0.296;
169 sample estimate for location difference: 0.222). See Figure 2A.

170

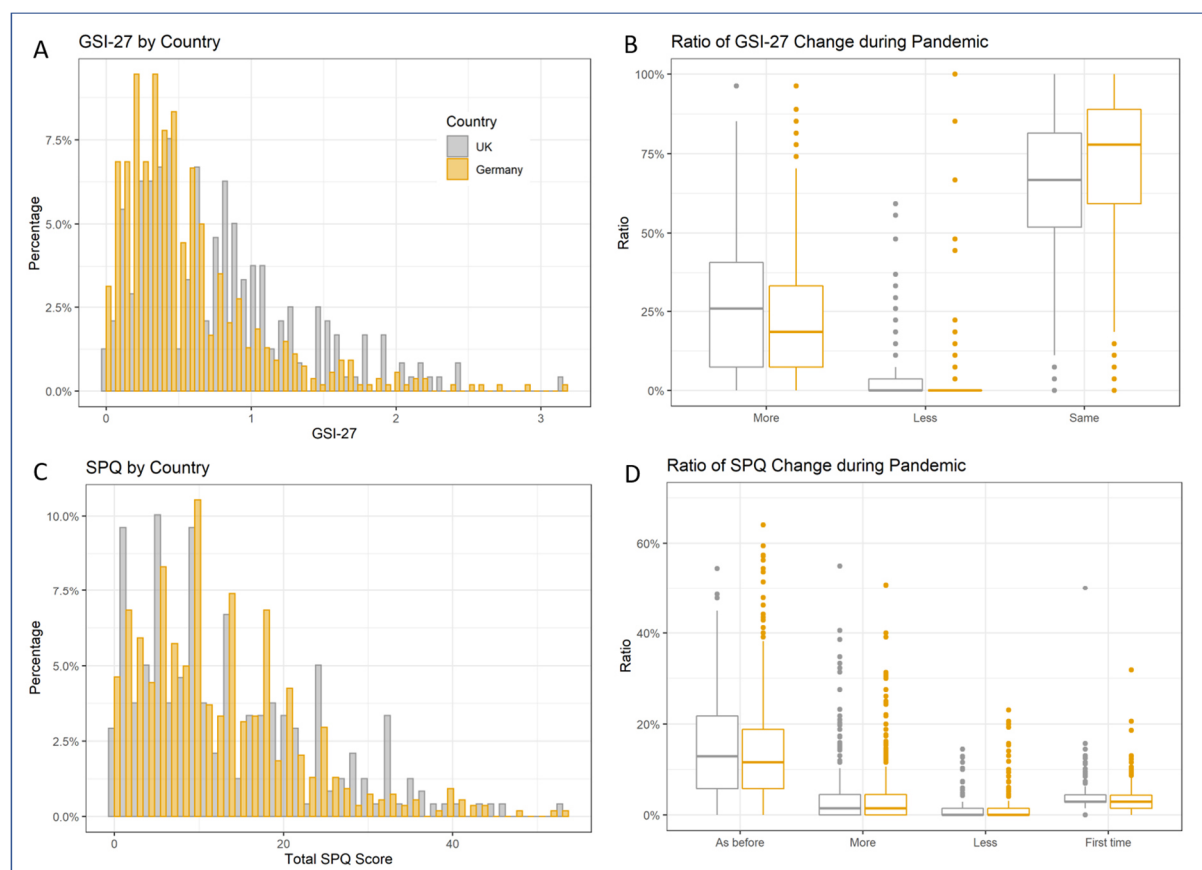
171 *Clinical cut-off for SLC sub-dimensions and subjective change*

172 In the general population [23], 10-15% of the screened population reach the clinical cut-off on the
173 different sub-dimensions, and require additional investigation. For the sub-dimension of dysthymic
174 symptoms (DYS) 68.5% of the UK responders and 37.6% of the German responders lay above the
175 clinical cut-off; for depressive symptoms it was 48.7% for the UK and 33.5% for the German
176 responders; for symptoms of social phobia 37.1% for the UK and 24.9% for German responders; for
177 symptoms of mistrust 28.9% for the UK and 26.6% for the German sample; for agoraphobic

178 symptoms 43.5% UK and 19.3% for the German responders; and for the vegetative symptoms 19.8%
179 for the UK and 9.6% for the German responders (see Suppl.Fig.8).

180 We furthermore recorded a subjective rating of change by asking responders on each question of
181 the SCL-27, whether or not this feeling has stay the same, has increased or decreased during the
182 pandemic. In the UK sample 27.0% of the responders reported an increase of symptoms, 3.6% a
183 decrease and 64.1% reported that symptoms stayed the same; whereas in the German sample
184 22.8% reported more symptoms, 2.5% less and 71.7% the same amount of symptoms (Figure 2B).

185



186

187 Figure 2. Display of clinical mental health scores measured with the SCL-27 and the SPQ. A:
188 Histogram of distribution of the global severity index based on 27 items (GSI-27) for psychological
189 symptoms, separately shown for countries. B: Boxplot shows the subjective change of global
190 symptom index during the pandemic measured with the SCL, separately for Germany and the UK. C:
191 Histogram of distribution of the total schizotypal personality score (SPQ_total), separately shown for
192 countries. D: Boxplot shows the subjective change of schizotypy symptoms during the pandemic
193 measured with the SPQ-scale, separately for Germany and the UK.

194

195 *Effects of the pandemic on the schizotypal personality traits using the Schizotypal Personality*
196 *Questionnaire (SPQ)*

197 *Total SPQ and subject change during the pandemic*

198 Using a Wilcox-test for non-parametric data, we found that the distribution of the total SPQ-score
199 was not different between the two countries ($W=68110$, p -value = 0.23). See Figure 2C.

200 Also for the SPQ, we recorded a subjective rating of change by asking responders on each question,
201 whether or not this feeling/situation has stay the same, has increased or decreased, or has occurred
202 the first time during the pandemic. In the UK sample, 14.7% of the responders reported symptoms
203 as before, 4.8% reported an increase, 1.2% a decrease and 4.4% an occurrence for the first time;
204 similarly, in the German sample, 14.2% reported that symptoms stayed the same, 4.1% reported an
205 increase, 1% a decrease and 3.5% an occurrence for the first time. See Figure 2D. The subjective
206 change of all sub-dimensions is presented in Suppl.Fig.9.

207

208 *Association between demographic variables, variables of substance use, media use, sleep, and*
209 *clinical scores*

210 In order to investigate predictive factors among demographic variables, variables describing
211 exercise, sleep, etc, contributing to clinical scores we conducted two sets of logarithmically
212 normalised multivariate Poisson regression analysis – one set using the GSI and the SCL-
213 subdimensions as outcome variables, and the second set using total SPQ score and the
214 subdimensions as outcome variables. All associations are described in Table 3A and Table4A. In
215 summary for the GSI, we found that responders from Germany have a significantly lower GSI score;
216 female responders are more strongly affected, as well as people with higher consumption rates of
217 marihuana; people who use more social media. Interestingly, people who sleep more (>8h) during
218 week nights have lower GSI scores as well as people who spend more time outside. The predictors
219 and risk factors shift slightly depending on the different subdimensions, but the overall picture is
220 similar.

221 Interestingly, for the total SPQ score, there was no association with country or gender, instead we
222 saw a protective association with being older, as well as with having a better education. Apart from
223 alcohol consumption, which has a protective association, increased use of tobacco, vaping and
224 marihuana was associated with a higher SPQ scores, and so was the use of social media and video
225 games. The increased use of print media however was associated with lower SPQ scores. Similarly to

226 the associations with GSI, more sleep during the week and the weekend and more time spent
227 outside had a protective association with the total SPQ.

228

229 *Association between COVID-19 impact measures, judgement as well as health, and clinical scores*

230 Again we conducted two sets of logarithmically normalised multivariate Poisson regression analyses
231 – one set using the GSI and the SCL-subdimensions as outcome variables, and the second set using
232 total SPQ score and the subdimensions as outcome variables. All associations are described in Table
233 3B and Table4B respectively. People who were more concerned about their life stability showed a
234 higher GSI. Unsurprising, but with a very strong effect, people who report poor mental health prior
235 to the pandemic were more strongly affected; interestingly the same is true for people who
236 reported low physical health. A protective association is seen for people whose quality of social
237 relationships had not been affected much by the pandemic. Again a similar picture with some
238 variations becomes apparent for the subdimensions. See Table3B.

239 For the total SPQ score, in this analysis, as opposed to the previous statistical model, female gender
240 was associated with a higher risk. Whereas increased hopefulness for the pandemic to end in the
241 near future was protective, the concern about life stability was a risk factor. People who have been
242 more strongly financially impacted showed higher SPQ-total scores. As also seen for the GSI, people
243 who reported poor mental health prior to the pandemic were more strongly affected; the same is
244 true for people who reported low physical health. Interestingly, whereas working in a home office or
245 being on unpaid leave has a protective effect on the SPQ-total, people who did not see any change in
246 their workplace were also associated with higher total SPQ scores. See Table 4B.

247

248

249

250

251 Discussion

252 This study investigated the difference between the impact of the COVID-19 pandemic on the UK and
253 Germany. The impact was assessed using an online survey including questions on the impact on life
254 circumstances, as well as two psychological questionnaires, the Symptom Check List (SCL-27) and the
255 Schizotypal Personality Questionnaire (SPQ). We found that UK responders reported more infections
256 and symptoms, a stronger financial hardship, and a stronger impact on health and the financial
257 situation of family members. We found that responders of both countries reported an increase in
258 psychological symptoms, especially depressive symptoms and anxieties. The global severity index
259 (GSI) of the SCL was higher in UK responders compared to German responders. An alarming finding
260 was that the percentage of people above clinical cut-off on the SCL-27 compared to a norm
261 population had more than doubled for depressive, dysthymic and agoraphobic symptoms as well as
262 for social phobias, and this increase was stronger in UK responders compared to German
263 responders. We did not find differences in the SPQ or its subscales between the two countries.
264 However, responders reported an increase of symptoms in about 9% with half of those reporting
265 symptoms for the first time. Interestingly, despite the differences, UK responders were still more
266 hopeful for a sooner end of the pandemic in their region, were less concerned about overall life
267 stability and reported more positive changes due to the pandemic (e.g., time with the family, no
268 commute, time for one-self).

269 In simple associative prediction models, we furthermore identified risk factors for the psychological
270 impact of the pandemic. Being UK resident, female, younger, having a lower education, a worse pre-
271 pandemic mental or physical health, as well as being more concerned about life stability, spending
272 less time outside and reporting a stronger negative impact of the pandemic on the qualities of social
273 contacts predicted higher scores of the GSI, as well as depressive, dysthymic symptoms as well as
274 symptoms of anxiety. Higher scores on the SPQ total-score and its subdimensions were predicted by
275 younger age, lower education, more substance (tobacco, vaping, marijuana) and media (social and
276 video games), less sleep, less time spent outside, worse quality of social contacts, and a worse pre-
277 pandemic mental and physical health.

278 To the best of our knowledge this is the first study showing a direct comparison of the psychological
279 impact [including schizotypy](#) of the pandemic between two countries. [There are several large scale
280 studies reporting assessment of levels of depression, anxiety and stress related to COVID-19
281 comparing multiple countries and regions](#) [15, 24]. This study identified prevalence and risk factors
282 globally, but does not draw direct comparisons between different WHO-regions. Interestingly,

283 however, Plomecka and colleagues (2020) report similar overall risk factors, such as being female,
284 younger, less optimistic, and having worse social relationships and pre-pandemic.

285 A special focus needs to be drawn on developing and low- or middle-income countries, as those
286 countries historically not only use a fraction of the global resources for mental health care and
287 prevention [25], but also face a much harder impact of the economic consequences of the pandemic
288 [26]; both of these aspects tremendously affect population mental health. In many low- and middle
289 income countries, implementing restrictive measures in order to prevent the spread of the virus has
290 a direct effect on the income of many day laborers, leaving them in direct fear of hunger for
291 themselves and their families [27]. In high-income countries, increased mental health risks are,
292 among other factors, linked to low socioeconomic status, low education, and over-crowded housing
293 [28]. These aspects are highly prominent in low- and middle income countries which might further
294 increase the risk for mental health problems. A recent review on the impact of the COVID-19
295 pandemic on mental health in low- and middle income countries across Asia and Africa [29] points
296 out that most studies investigating this topic report increased levels of depression, post-traumatic
297 stress disorder, adjustment disorders, addiction problems, sleep disorders, and anxiety disorders;
298 the lack of thorough investigation of mental health in general and the poor quality of infrastructure
299 for prevention and intervention remain pressing problems in low- and middle income countries.

300 Several studies investigate the psychological impact of the pandemic with a national focus. Two
301 longitudinal studies conducted in UK populations [30, 31] show a general deterioration of mental
302 health in April compared to before the pandemic. Both studies identify similar risk factors such as
303 being female, younger of age and having pre-pandemic mental health conditions. The same is true
304 for research conducted on German populations. A study by Bäuerle and colleagues [32] reports an
305 increase in anxiety, depression and psychological distress with females and younger adults reported
306 a stronger impact. Interestingly, Benke and colleagues [33] report similar effects but dissociate them
307 from the governmental measures taken to control the pandemic. Another recent study [34]
308 compared two countries, Poland and China, that differently enforced mask wearing during the initial
309 stages of the pandemic and compared mental and physical health outcomes. For Poland, the country
310 which less enforced mask wearing, the authors report higher levels of anxiety, depression and stress,
311 as well as physical symptoms related to a COVID-19-infection.

312 Our study does not contain true pre-pandemic data. However, we assessed subjective measures of
313 change questions on life circumstance and mental health question including the psychological
314 questionnaires, asking participants to either report on that particular question three month ago or
315 report whether symptoms had increased, decrease or stayed the same. In the UK population, we

316 found a tripling of the percentage of people lying above cut-off compared to a norm population for
317 depressive, dysthymic and agoraphobic symptoms, and a doubling on symptoms of social phobia
318 and symptoms of mistrust. Similarly, Kwong and colleagues (2020) report a doubling of symptoms of
319 anxiety in a UK sample. In the German responders, we found a doubling for depressive and
320 dysthymic symptoms, for symptoms of social phobia and symptoms of mistrust. The increase in our
321 study compared to Kwong et al (2020) might be due to the fact that the SCL-27 aims at high
322 sensitivity, but low specificity on the individual symptoms. However, the increase is alarming, and
323 requires actions for interventions.

324 Overall, our results match those of countries in a global comparison [15], and individual countries
325 such as China [13, 35], [Bangladesh \[36\]](#), [Brazil \[37\]](#), [South-Africa \[38\]](#), [Lebanon \[39\]](#), [Greece \[40\]](#), [Iran](#)
326 [\[41\]](#), [Japan \[42\]](#), [India \[43, 44\]](#), [Italy \[45\]](#) or [Spain \[46, 47\]](#). Here, we provide a unique comparison of
327 two economically and culturally similar countries. However, the governments of both countries
328 followed different strategies in responding to the pandemic, whereas the German government
329 implemented a prompt lock-down [16], the British government first discussed herd-immunity [48],
330 causing a significant delay to implement the lock-down, which according to different predictive
331 models has significantly increased the number of death in the UK [16]. At the time when we started
332 the data collection the rise in cases in Germany was slowing down, whereas the cases in the UK were
333 still increasing quickly, which may have influenced the results. The convenience sample nature of the
334 participants is a limitation as it could also contribute to the observed results. Although our study
335 does include participants with pre-existing mental illness (overall: 14.22%; UK:20.29%; Germany:
336 11.59%), it was not designed to specifically address mental health impact of the pandemic on those
337 with severe and enduring mental illness, as this would require a more targeted study design.
338 Although, the comparison of the two countries is still difficult, as both countries vary on a large
339 number of factors not accounted for in this study that might have additionally contributed to the
340 difference, it is likely that the burden of higher death rates and hospitalisations has increased the
341 impact on mental well-being described in this study.

342 Interestingly, we find this dichotomy between a stronger financial and health impact of the
343 pandemic on UK residents compared to German residents, and still a more optimistic judgment of
344 the overall situation of the UK compared to the German residents. Further research would be
345 needed to further investigate how pre-existing cultural attitudes contribute to these differences. We
346 speculate there could be cultural differences in how likely people are to complain about their
347 personal situation in a questionnaire, also there could be some linguistic difference in how these
348 questions are understood by participants of the two countries. Another line of future enquiry could

349 examine the role of such attitudes as the stereotypes of the British ‘Keep calm and carry on’ way of
350 life [49] compared to the German stereotype of criticism and pessimism [50].

351 The ultimate question raised by our findings, and those of the many other studies investigating this
352 important topic, is how to establish early interventions for mental health problems during a public
353 health emergency? A number of reviews and opinion articles address this question in detail [4, 51–
354 54]. The most important aspects proposed to date are psychoeducation and support for health care
355 works, the detection of psychological problems or crises in the general population through online
356 surveys and questionnaires, increased access to online consultations with health care professionals,
357 as well as the development of intervention apps and online tools targeted for specific disorders such
358 as anxiety disorder or depression.

359 *Limitations*

360 This study has potential limitations. First, we used a purely online data collection methods,
361 therefore, people without or with limited access to computers, or less well-versed using these
362 methods would be excluded from the sample. However, in order maximally ease the accessibility of
363 the questionnaire we provided an online version with smart-phone compatible formatting. Second,
364 we used a snowball sampling method, therefore, the sample is not fully representable of the general
365 population. The results of the study should therefore be interpreted considering the sample’s
366 demographics. Third, comparing two countries is problematic as the countries vary on a large
367 number of factors that are not and cannot be accounted for in detail. Therefore, any differences
368 between the countries presented in this study might be linked to baseline differences. However, by
369 specifically asking for a subjective change considering a pre- versus during-pandemic time-point, we
370 minimised this confound. Fourth, we used a self-reporting survey without clinical in-person
371 verifications. Social distancing measures complicate such verification. However, by using a
372 completely voluntary and anonymous format, as well as standardised questionnaires we are
373 minimising potential effects. And fifth, we are presenting simple logistic prediction models without
374 testing for confounds and interactions. Although this approach may not present conclusive results, it
375 does allow for comparison with other studies following the same approach, and to generate
376 hypothesis for future research rather than definitive inference.

377

378 **Declarations**

379 **Ethics approval and consent to participate**

380 Ethical approval was obtained from the Ethical Commission Board of the Technical University
381 Munich (250/20 S). All respondents included in the analyses provided informed consent. Our
382 research was performed in accordance with the Declaration of Helsinki.

383 **Consent for publication**

384 Not applicable.

385 **Availability of data and materials**

386 [The dataset generated during the current study are not publicly available while data collection is](#)
387 [ongoing but are available from the corresponding author on reasonable request. The anticipated](#)
388 [end of the data collection is December 2021.](#)

389 **Competing Interests**

390 All authors declare no competing financial interests.

391 **Funding**

392 FK received funding from the European Union's Horizon 2020 [Grant number 754462].

393 **Authors' Contributions**

394 FK: administration of the project, conceptualisation, methodology, formal analysis and writing
395 (original draft, review and editing), administration of the project. LR: formal analysis, editing of
396 manuscript. GKM: methodology, and writing (review and editing).

397 **Acknowledgement**

398 We thank the participants of the study who contributed their time and further circulated the survey.
399 [We thank Lorenz Mihatsch for the fruitful discussions and Sarah Daimer for help with the revision of](#)
400 [the manuscript](#)

401

402

403 **Figure Captions**

404 Figure 1. National progression of COVID-19 cases, deaths and recoveries comparing Germany and
405 the UK from Jan. 22,2020 – Jul. 11,2020. Recovery rate UK: after April 12., 2020 recovered cases are
406 not reported for the UK. *Germany followed a state-wise lockdown, with the first state going in lock-
407 down on Mar.13,2020 and the last state on the Mar. 16, 2020. UK announced nationwide lockdown
408 on Mar.23, 2020. Data taken from the 2019 Novel CoronaVirus CoViD-19 (2019-nCoV) Data
409 Repository by Johns Hopkins University Center for Systems Science and Engineering (JHU CSSE)
410 (<https://github.com/CSSEGISandData/COVID-19>) on Jul. 11, 2020

411 Figure 2. Display of clinical mental health scores measured with the SCL-27 and the SPQ. A:
412 Histogram of distribution of the global severity index based on 27 items (GSI-27) for psychological
413 symptoms, separately shown for countries. B: Boxplot shows the subjective change of global
414 symptom index during the pandemic measured with the SCL, separately for Germany and the UK. C:
415 Histogram of distribution of the total schizotypal personality score (SPQ_total), separately shown for
416 countries. D: Boxplot shows the subjective change of schizotypy symptoms during the pandemic
417 measured with the SPQ-scale, separately for Germany and the UK.

418

419

421 **References**

- 422 1. WHO-Media-Briefing. WHO-Media-Briefing. [https://www.who.int/dg/speeches/detail/who-](https://www.who.int/dg/speeches/detail/who-director-general-s-opening-remarks-at-the-media-briefing-on-covid-19---11-march-2020)
423 [director-general-s-opening-remarks-at-the-media-briefing-on-covid-19---11-march-2020](https://www.who.int/dg/speeches/detail/who-director-general-s-opening-remarks-at-the-media-briefing-on-covid-19---11-march-2020).
- 424 2. WHO. Mental health and psychosocial considerations during the COVID-19 outbreak, 18 March
425 2020. World Health Organization; 2020.
- 426 3. Pfefferbaum B, North CS. Mental health and the Covid-19 pandemic. *N Engl J Med*. 2020.
- 427 4. Holmes EA, O'Connor RC, Perry VH, Tracey I, Wessely S, Arseneault L, et al. Multidisciplinary
428 research priorities for the COVID-19 pandemic: a call for action for mental health science. *The Lancet*
429 *Psychiatry*. 2020.
- 430 5. Brooks SK, Webster RK, Smith LE, Woodland L, Wessely S, Greenberg N, et al. The psychological
431 impact of quarantine and how to reduce it: rapid review of the evidence. *Lancet*. 2020.
- 432 6. Uutela A. Economic crisis and mental health. *Curr Opin Psychiatry*. 2010;23:127–30.
- 433 7. Evans-Lacko S, Knapp M, McCrone P, Thornicroft G, Mojtabai R. The mental health consequences
434 of the recession: economic hardship and employment of people with mental health problems in 27
435 European countries. *PLoS One*. 2013;8:e69792.
- 436 8. Usher K, Bhullar N, Durkin J, Gyamfi N, Jackson D. Family violence and COVID-19: Increased
437 vulnerability and reduced options for support. *Int J Ment Health Nurs*. 2020.
- 438 9. Mazza M, Marano G, Lai C, Janiri L, Sani G. Danger in danger: Interpersonal violence during COVID-
439 19 quarantine. *Psychiatry Res*. 2020;:113046.
- 440 10. Volkow ND. Collision of the COVID-19 and addiction epidemics. 2020.
- 441 11. Gao J, Zheng P, Jia Y, Chen H, Mao Y, Chen S, et al. Mental health problems and social media
442 exposure during COVID-19 outbreak. *PLoS One*. 2020;15:e0231924.
- 443 12. Garfin DR, Silver RC, Holman EA. The novel coronavirus (COVID-2019) outbreak: Amplification of
444 public health consequences by media exposure. *Heal Psychol*. 2020.
- 445 13. Wang C, Pan R, Wan X, Tan Y, Xu L, McIntyre RS, et al. A longitudinal study on the mental health
446 of general population during the COVID-19 epidemic in China. *Brain Behav Immun*. 2020.
- 447 14. Wang J, Alsop DC, Song HK, Maldjian JA, Tang K, Salvucci AE, et al. Arterial transit time imaging
448 with flow encoding arterial spin tagging (FEAST). *Magn Reson Med*. 2003.
- 449 15. Plomecka MB, Gobbi S, Neckels R, Radziński P, Skórko B, Lazzeri S, et al. Mental Health Impact of

- 450 COVID-19: A global study of risk and resilience factors. medRxiv. 2020.
- 451 16. Balmford B, Annan JD, Hargreaves JC, Altoè M, Bateman IJ. Cross-Country Comparisons of Covid-
452 19: Policy, Politics and the Price of Life. *Environ Resour Econ*. 2020;:1–27.
- 453 17. Murray GK, Jones PB. Psychotic symptoms in young people without psychotic illness:
454 Mechanisms and meaning. *British Journal of Psychiatry*. 2012;201:4–6.
- 455 18. Hardt J, Gerbershagen HU. Cross-validation of the SCL-27: A short psychometric screening
456 instrument for chronic pain patients. *Eur J Pain*. 2001;5:187–97.
- 457 19. Hardt J, Dragan M, Kappis B. A short screening instrument for mental health problems: The
458 Symptom Checklist-27 (SCL-27) in Poland and Germany. *Int J Psychiatry Clin Pract*. 2011;15:42–9.
- 459 20. Raine A. The SPQ: A Scale for the Assessment of Schizotypal Personality Based on DSM-III-R
460 Criteria. *Schizophr Bull*. 1991;17:555–64.
- 461 21. Davies DJ. Psychotic experiences beyond psychotic disorders: from measurement to
462 computational mechanisms. University of Cambridge; 2017.
- 463 22. Mair P, Wilcox R. Robust statistical methods in R using the WRS2 package. *Behav Res Methods*.
464 2020;52:464–88.
- 465 23. Hardt J, Egle UT, Kappis B, Hessel A, Brähler E. Die Symptom-Checkliste SCL-27. *PPmP-*
466 *Psychotherapie- Psychosom Medizinische Psychol*. 2004;54:214–23.
- 467 24. Adamson MM, Phillips A, Seenivasan S, Martinez J, Grewal H, Kang X, et al. International
468 prevalence and correlates of psychological stress during the global COVID-19 pandemic. *Int J Environ*
469 *Res Public Health*. 2020;17:1–16.
- 470 25. Rathod S, Pinninti N, Irfan M, Gorczynski P, Rathod P, Gega L, et al. Mental Health Service
471 Provision in Low- and Middle-Income Countries. *Heal Serv insights*. 2017;10:1178632917694350–
472 1178632917694350.
- 473 26. Vigo D, Thornicroft G, Gureje O. The Differential Outcomes of Coronavirus Disease 2019 in Low-
474 and Middle-Income Countries vs High-Income Countries. *JAMA Psychiatry*. 2020;77:1207–8.
- 475 27. Kola L, Kohrt BA, Hanlon C, Naslund JA, Sikander S, Balaji M, et al. COVID-19 mental health
476 impact and responses in low-income and middle-income countries: reimagining global mental
477 health. *The Lancet Psychiatry*. 2021.
- 478 28. Lund C, Brooke-Sumner C, Baingana F, Baron EC, Breuer E, Chandra P, et al. Social determinants

- 479 of mental disorders and the Sustainable Development Goals: a systematic review of reviews. *The*
480 *Lancet Psychiatry*. 2018;5:357–69.
- 481 29. Kar SK, Oyetunji TP, Prakash AJ, Ogunmola OA, Tripathy S, Lawal MM, et al. Mental health
482 research in the lower-middle-income countries of Africa and Asia during the COVID-19 pandemic: A
483 scoping review. *Neurol Psychiatry Brain Res*. 2020;38:54–64.
- 484 30. Kwong ASF, Pearson RM, Adams MJ, Northstone K, Tilling K, Smith D, et al. Mental health during
485 the COVID-19 pandemic in two longitudinal UK population cohorts. *medRxiv*. 2020.
- 486 31. Pierce M, Hope H, Ford T, Hatch S, Hotopf M, John A, et al. Mental health before and during the
487 COVID-19 pandemic: a longitudinal probability sample survey of the UK population. *The Lancet*
488 *Psychiatry*. 2020.
- 489 32. Bäuerle A, Teufel M, Musche V, Weismüller B, Kohler H, Hetkamp M, et al. Increased generalized
490 anxiety, depression and distress during the COVID-19 pandemic: a cross-sectional study in Germany.
491 *J Public Health (Bangkok)*. 2020.
- 492 33. Benke C, Autenrieth LK, Asselmann E, Pané-Farré CA. Lockdown, quarantine measures, and social
493 distancing: Associations with depression, anxiety and distress at the beginning of the COVID-19
494 pandemic among adults from Germany. *Psychiatry Res*. 2020;:113462.
- 495 34. Wang C, Chudzicka-Czupała A, Grabowski D, Pan R, Adamus K, Wan X, et al. The Association
496 Between Physical and Mental Health and Face Mask Use During the COVID-19 Pandemic: A
497 Comparison of Two Countries With Different Views and Practices. *Front Psychiatry*. 2020;11:901.
- 498 35. Qian M, Wu Q, Wu P, Hou Z, Liang Y, Cowling BJ, et al. Psychological responses, behavioral
499 changes and public perceptions during the early phase of the COVID-19 outbreak in China: a
500 population based cross-sectional survey. *medRxiv*. 2020.
- 501 36. Mamun MA, Sakib N, Gozal D, Bhuiyan AKMI, Hossain S, Bodrud-Doza M, et al. The COVID-19
502 pandemic and serious psychological consequences in Bangladesh: A population-based nationwide
503 study. *J Affect Disord*. 2021;279:462–72.
- 504 37. Goularte JF, Serafim SD, Colombo R, Hogg B, Caldieraro MA, Rosa AR. COVID-19 and mental
505 health in Brazil: psychiatric symptoms in the general population. *J Psychiatr Res*. 2021;132:32–7.
- 506 38. Kim AW, Nyengerai T, Mendenhall E. Evaluating the Mental Health Impacts of the COVID-19
507 Pandemic in Urban South Africa: Perceived Risk of COVID-19 Infection and Childhood Trauma Predict
508 Adult Depressive Symptoms. *medRxiv Prepr Serv Heal Sci*. 2020;:2020.06.13.20130120.

- 509 39. Salameh P, Hajj A, Badro DA, Abou Selwan C, Aoun R, Sacre H. Mental Health Outcomes of the
510 COVID-19 Pandemic and a Collapsing Economy: Perspectives from a Developing Country. *Psychiatry*
511 *Res.* 2020;294:113520.
- 512 40. Fountoulakis KN, Apostolidou MK, Atsiova MB, Filippidou AK, Florou AK, Gousiou DS, et al. Self-
513 reported changes in anxiety, depression and suicidality during the COVID-19 lockdown in Greece. *J*
514 *Affect Disord.* 2021;279:624–9.
- 515 41. Yigitcanlar T, Kamruzzaman M, Teimouri R, Degirmenci K, Alanjagh FA. Association between park
516 visits and mental health in a developing country context: The case of Tabriz, Iran. *Landsc Urban Plan.*
517 2020;199:103805.
- 518 42. Ueda M, Stickley A, Sueki H, Matsubayashi T. Mental Health Status of the General Population
519 during the COVID-19 Pandemic: A Cross-sectional National Survey in Japan. *medRxiv.* 2020.
- 520 43. Kene P. Mental health implications of the COVID-19 pandemic in India. *Psychol Trauma Theory,*
521 *Res Pract Policy.* 2020;12:585.
- 522 44. Kochhar AS, Bhasin R, Kochhar GK, Dadlani H, Mehta VV, Kaur R, et al. Lockdown of 1.3 billion
523 people in India during Covid-19 pandemic: A survey of its impact on mental health. *Asian J Psychiatr.*
524 2020.
- 525 45. Rossi R, Socci V, Talevi D, Mensi S, Niolu C, Pacitti F, et al. COVID-19 pandemic and lockdown
526 measures impact on mental health among the general population in Italy. An N= 18147 web-based
527 survey. *MedRxiv.* 2020.
- 528 46. González-Sanguino C, Ausín B, ÁngelCastellanos M, Saiz J, López-Gómez A, Ugidos C, et al. Mental
529 health consequences during the initial stage of the 2020 Coronavirus pandemic (COVID-19) in Spain.
530 *Brain Behav Immun.* 2020.
- 531 47. Ozamiz-Etxebarria N, Dosil-Santamaria M, Picaza-Gorrochategui M, Idoiaga-Mondragon N.
532 Stress, anxiety, and depression levels in the initial stage of the COVID-19 outbreak in a population
533 sample in the northern Spain. *Cad Saude Publica.* 2020;36:e00054020.
- 534 48. Sibony A-L. The UK COVID-19 Response: A Behavioural Irony? *Eur J Risk Regul.* 2020;:1–8.
- 535 49. Storry M, Childs P. *British cultural identities.* Taylor & Francis; 2016.
- 536 50. Cliffe J. Cheer up, Deutschland. *Economist.* 2018.
537 <https://www.economist.com/europe/2018/08/02/cheer-up-deutschland>. Accessed 27 Aug 2020.
- 538 51. Talevi D, Pacitti F, Socci V, Renzi G, Alessandrini MC, Trebbi E, et al. The COVID-19 outbreak:

- 539 impact on mental health and intervention strategies. *J Psychopathol.* 2020;26:162–70.
- 540 52. Orrù G, Rebecca C, Gemignani A, Conversano C. Psychological intervention measures during the
541 COVID-19 pandemic. 2020.
- 542 53. Galea S, Merchant RM, Lurie N. The mental health consequences of COVID-19 and physical
543 distancing: the need for prevention and early intervention. *JAMA Intern Med.* 2020;180:817–8.
- 544 54. Duan L, Zhu G. Psychological interventions for people affected by the COVID-19 epidemic. *The*
545 *Lancet Psychiatry.* 2020;7:300–2.
- 546
- 547

Table 1. Cohort demographics and COVID-19 exposure including impact on life; and differences between Germany and the UK.

		Whole sample	UK	Germany	Chi ² / Wilcox for country comparison: UK vs. GER
N		858	239	541	X-squared =118.2, df = 1, p-value < 0.001 ***
Age		43.27yrs (SD15.4)	39.01yrs (SD16.0)	45.36yrs (SD14.8)	Wilcox: 48386 p-value < 0.001 ***
Gender	Female	71.6%	73.6%	71.2%	X-squared = 0.36, df = 2, p-value = 0.8
	Male	25.4%	24.3%	25.9%	
	Diverse	0.5%	0.4%	0.6%	
	Missing	2.5%	1.7%	2.4%	
Education	School leavers	0.1%	0.4%	-	X-squared = 69.3, df = 7, p-value<0.001***
	8years – A-Levels	14.3%	19.2%	13.1%	
	Professional college or Bachelor	24.3%	31.8%	21.6%	
	Masters or higher	60.1%	47.3%	64.9%	
	Missing	1.2%	1.3%	0.4%	
Children at home (max.18years)	Yes	28.1%	21.1%	30.7%	X-squared = 7.83, df = 1, p-value = 0.005 **
	Missing	2.0%	1.6%	2.6%	
COVID19 exposure					
Suspected infection	Positive Test	0.1%	-	0.2%	X-squared = 7.25, df = 3, p-value = 0.06
	Diagnosis	1.3%	2.5%	0.7%	
	Symptoms	15.6%	18.8%	14.2%	
	No infection	82.2%	78.7%	83.9%	
	Missing	0.8%	-	0.9%	
Symptoms	Fever	8.5%	10.0%	8.0%	X-squared = 1.04, df = 1, p-value = 0.3 (based on 'no symptoms')
	Cough	17.1%	21.3%	15.5%	
	Shortness of breath	9.4%	10.0%	9.8%	
	Sore throat	21.2%	23.4%	19.9%	
	Fatigue	27.4%	28.5%	27.7%	
	Lost smell/taste	2.9%	4.2%	2.2%	
	Infected eyes	3.7%	3.8%	3.5%	
	Other symptoms	6.3%	6.3%	6.7%	
No symptoms	55.2%	51.9%	55.8%		
Contact to people with potential infection	Positive test	7.8%	3.3%	9.8%	X-squared = 1.14, df = 1, p-value = 0.3 (based on 'no contact')
	Diagnosis	2.1%	5.4%	0.6%	
	Symptoms	12.8%	17.2%	11.7%	
	No contact	78.1%	74.9%	78.4%	
Impact on work and financial situation					
	Home office	48.7%	50.6%	46.8%	X-squared = 2.39,

Impact on work	Reductions of hours	7.1%	6.7%	7.4%	df = 1, p-value = 0.1 (based on 'no change')
	Unpaid leave	2.6%	3.4%	2.4%	
	Overtime/negative hours [‡]	7.7%	1.3%	11.3%	
	Lost job	3.9%	2.9%	3.7%	
	No change	16.1%	13.0%	17.4%	
Impact on family	Infected	5.8	10.5%	4.4%	X-squared = 38.3, df = 1, p-value < 0.001 *** (based on 'no impact')
	Hospitalised	1.8%	1.7%	2.0%	
	Death	1.3%	3.8%	0.4%	
	Quarantine, symptoms	15.3%	23.9%	12.2%	
	Quarantine, no symptoms	7.5%	14.6%	4.6%	
	Reduced working hours	16.7%	26.4%	12.6%	
	Lost job	6.8%	10.9%	4.4%	
	No impact	65.9%	49.0%	71.9%	
Financial impact of COVID-19	No impact	54.0%	46.0%	58.8%	X-squared = 19.2, df = 4, p-value < 0.001 ***
	Slight	16.4%	23.4%	12.8%	
	Moderate	13.3%	11.7%	12.8%	
	Big	12.6%	15.9%	11.7%	
	Extreme	3.3%	2.9%	3.3%	
	Missing	0.5%	-	0.7%	
Not enough money for food	Yes	2.9%	2.9%	3.1%	X-squared = 0.03, df = 1, p-value = 0.8
	Missing	1.1%	1.0%	1.0%	
Personal judgement of the situation					
Are the restrictions stressful?	Not at all	13.5%	11.3%	14.8%	X-squared = 6.3, df = 4, p-value = 0.2
	Slightly	26.8%	29.3%	26.3%	
	Moderately	27.6%	25.5%	28.1%	
	Very	20.5%	24.3%	18.7%	
	Extremely	11.3%	9.2%	12.2%	
	Missing	0.2%	0.4%	-	
How concerned are you about your life stability?	Not at all	34.6%	46.4%	30.5%	X-squared = 21.7, df = 4, p-value < 0.001***
	Slightly	23.4%	22.2%	23.8%	
	Moderately	19.1%	14.2%	21.3%	
	Very	15.4%	10.9%	17.2%	
	Extremely	6.8%	5.0%	6.8%	
	Missing	0.7%	1.3%	0.4%	
How hopeful are you of a soon end of the pandemic in your region of residence?	Not at all	17.1%	14.2%	17.9%	X-squared = 28.824, df = 4, p-value = 8.489e-06 ***
	Slightly	32.1%	27.6%	34.9%	
	Moderately	28.6%	25.2%	30.1%	
	Very	14.7%	19.7%	12.8%	
	Extremely	7.6%	13.0%	4.3%	
Does the pandemic have any	No	35.0%	31.0%	36.4%	X-squared = 14.225, df = 2, p-value = 0.0008147***
	Few	35.6%	29.3%	37.7%	
	Some	29.1%	38.9%	25.9%	

positive impact on your personal life?	Missing	0.4%	0.8%	-	
Mental and physical health status					
Self-rated mental health, before COVID-19	Excellent	15.0%	14.2%	15.3%	X-squared = 34.938, df = 4, p-value = 4.783e-07 ***
	Very good	32.4%	21.8%	37.0%	
	Good	28.7%	30.1%	28.3%	
	Fair	16.4%	21.3%	14.6%	
	Poor	5.8%	11.3%	3.3%	
	Missing	1.6%	1.3%	1.5%	
Regular treatment for mental illness, before pandemic	Yes	13.3%	17.6%	10.1%	X-squared = 8.7436, df = 1, p-value = 0.003107 **
	Missing	11.4%	13.4%	7.2%	
Continuation of treatment during pandemic	More	2.3%	3.6%	1.0%	X-squared = 5.3799, df = 2, p-value = 0.06789
	Less	12.5%	13.6%	11.5%	
	Same	85.3%	82.8%	87.8%	
Self-rated physical health, before pandemic	Excellent	12.1%	13.0%	11.3%	X-squared = 1.5322, df = 4, p-value = 0.8209
	Very good	33.1%	32.2%	33.3%	
	Good	33.9%	31.8%	35.7%	
	Fair	16.3%	17.2%	15.5%	
	Poor	3.2%	3.8%	3.3%	
	Missing	1.4%	2.1%	1.0%	
Regular treatment for physical illness, before pandemic	Yes	19.5%	18.4%	20.2%	X-squared = 0.0008792, df = 1, p-value = 0.9763
	Missing	11.6%	14.6%	7.0%	
Continuation of treatment during pandemic	More	1.0%	1.8%	-	X-squared = 5.7522, df = 2, p-value = 0.05635
	Less	14.1%	14.3%	14.4%	
	Same	85.0%	83.9%	85.6%	
* < .05, ** < .01, *** < .001; † Overtime/negative hours, is a concept uncommon in the UK.					

Table 2. Results from Robust ANOVAs showing the effects of differences between countries (UK and Germany) and time points (before and during the pandemic) on a set of different variables.

	Before pandemic		During pandemic		Robust ANOVA/ M-estimator		
	UK	GER	UK	GER	Country	Timepoint	Country x Timepoint
Behaviour							
Sleep week	2.064	2.057	2.137	2.069	.005 **	.005 **	.005 **
Sleep weekend	2.406	2.363	2.328	2.326	.145	.135	.162
Exercise	2.841	2.464	2.974	2.553	.000 ***	.112	.816
Outside	3.889	3.877	3.568	3.798	.369	.164	.217
Mental well-being							
Happy/content	3.476	3.482	2.747	2.749	.952	.000 ***	.910
Concerned	2.225	2.276	2.871	3.101	.020 *	.000 ***	.112
Enjoy activities	3.648	3.862	2.635	3.021	.000 ***	.000 ***	.165
Relaxed	2.91	2.434	3.349	2.893	.000 ***	.000 ***	.783
Restless	1.953	1.885	2.316	2.200	.117	.000 ***	.678
Tired	2.573	2.624	2.773	2.782	.399	.003 **	.715
Focused	2.433	2.293	3.282	2.718	.000 ***	.000 ***	.005 **
Irritated	2.021	2.365	2.517	2.715	.000 ***	.000 ***	.185
Lonely	1.639	1.725	2.202	2.298	.354	.000 ***	.356
Negative thoughts	2.650	2.550	2.944	2.939	.296	.000 ***	.329
Media consumption							
TV/digital media	2.798	2.813	3.262	3.095	.114	.114	.114
Social media	2.500	2.081	2.81	2.42	.000 ***	.018 *	.705
Video games	1.268	1.199	1.549	1.279	i	i	i
Print media	1.953	2.400	2.128	2.573	.000 ***	.000 ***	.276
Substance use							
Alcohol	4.288	3.941	4.361	4.16	.027 *	.467	.750
Tobacco	1.461	1.830	1.391	1.933	i	i	i
Marihuana	1.225	1.153	1.211	1.193	i	i	i
Opiate/Heroin	1.000	1.028	1.009	1.021	i	i	i
* < .05, ** < .01, *** < .001, i = could not be calculated due to insufficient dispersion or change							

Table 3. Results for two different logistic regression models, investigating the association between demographic variables, variables of substance use, media use and sleep (A) as well as COVID19 impact (B) and the psychological symptoms (SCL dimensions) as well as global mental health status (GSI).

	Global Symptom Index			Depressive Symptoms			Dythymic Symptoms			Agoraphobic Symptoms			Vegetative Symptoms			Symptoms of Mistrust			Sociophobic symptoms			
	E.S.	z-val.	p-val.	E.S.	z-val.	p-val.	E.S.	z-val.	p-val.	E.S.	z-val.	p-val.	E.S.	z-val.	p-val.	E.S.	z-val.	p-val.	E.S.	z-val.	p-val.	
A																						
(Intercept)	0.020	0.026	0.979	0.610	1.156	0.248	0.501	1.084	0.278	-0.024	-0.033	0.973	0.279	0.297	0.767	0.316	0.527	0.598	0.965	1.619	0.105	
Country of residence: Germany	-0.362	-2.033	0.042	-0.346	-2.803	0.005	-0.562	-5.269	0.000	-0.928	-5.391	0.000	-0.115	-0.509	0.611	0.223	1.513	0.130	-0.297	-2.122	0.034	
Gender: Female	0.468	2.179	0.029	0.344	2.444	0.015	0.314	2.504	0.012	0.527	2.408	0.016	0.638	2.223	0.026	-0.043	-0.295	0.768	0.497	2.891	0.003	
Age	-0.008	-1.186	0.235	-0.002	-0.373	0.709	-0.006	-1.371	0.170	-0.006	-0.943	0.346	-0.015	-1.730	0.084	-0.002	-0.327	0.744	-0.025	-4.423	0.000	
Highest education	-0.089	-1.569	0.117	-0.121	-3.142	0.002	0.001	0.016	0.987	-0.113	-2.087	0.037	-0.190	-2.829	0.005	-0.094	-2.117	0.034	-0.071	-1.573	0.160	
Alcohol consumpt.	-0.003	-0.092	0.927	0.049	1.922	0.055	0.006	0.266	0.790	0.027	0.748	0.454	-0.006	-0.126	0.900	0.005	0.168	0.867	-0.011	-0.397	0.630	
Tobacco consumpt.	-0.017	-0.386	0.700	-0.004	-0.138	0.890	0.015	0.624	0.533	-0.010	-0.245	0.807	-0.069	-1.217	0.224	-0.028	-0.832	0.406	-0.007	-0.207	0.830	
Vaping consumpt.	0.076	1.237	0.216	0.037	0.753	0.451	0.048	1.166	0.244	-0.024	-0.300	0.764	0.049	0.615	0.538	0.045	0.777	0.437	0.044	0.791	0.440	
Marihuana consumpt.	0.125	2.018	0.044	0.083	1.737	0.082	0.076	1.827	0.068	0.067	0.975	0.330	0.128	1.625	0.104	0.085	1.544	0.123	0.060	1.098	0.055	
Social media usage	0.173	1.975	0.048	0.053	0.874	0.382	0.081	1.521	0.128	0.132	1.559	0.119	0.133	1.241	0.215	0.089	1.280	0.201	-0.038	-0.529	0.590	
Video Games	0.138	1.536	0.125	0.127	2.015	0.044	0.087	1.516	0.130	0.033	0.371	0.711	0.081	0.680	0.497	0.091	1.187	0.235	0.138	1.920	0.055	
Print media usage	-0.122	-1.392	0.164	0.013	0.216	0.829	-0.096	-1.734	0.083	-0.024	-0.286	0.775	-0.092	-0.823	0.411	-0.103	-1.422	0.155	-0.027	-0.393	0.695	

Sleep during the week	-0.547	-3.207	0.001	-0.503	-4.264	0.000	-0.201	-1.855	0.064	0.006	0.034	0.973	-0.324	-1.432	0.152	-0.308	-2.247	0.025	-0.474	-3.648	0.000
Sleep during the weekend	0.065	0.421	0.674	0.101	0.936	0.349	-0.051	-0.499	0.618	-0.126	-0.759	0.448	-0.350	-1.713	0.087	-0.047	-0.369	0.712	0.157	1.305	0.197
Exercise	0.051	0.692	0.489	-0.048	-0.961	0.336	-0.058	-1.300	0.194	-0.007	-0.099	0.921	-0.021	-0.236	0.813	0.054	0.964	0.335	0.033	0.578	0.563
Time spent outside	-0.163	-2.210	0.027	-0.113	-2.257	0.024	-0.088	-1.981	0.048	-0.159	-2.199	0.028	0.064	0.702	0.483	-0.133	-2.353	0.019	-0.096	-1.659	0.087
B	E.S.	z-val.	p-val.	E.S.	z-val.	p-val.	E.S.	z-val.	p-val.	E.S.	z-val.	p-val.	E.S.	z-val.	p-val.	E.S.	z-val.	p-val.	E.S.	z-val.	p-val.
(Intercept)	-1.930	-2.665	0.008	-0.500	-1.040	0.298	-0.861	-1.973	0.048	-1.326	-1.886	0.059	-2.160	-2.521	0.012	-1.092	-2.034	0.042	-1.688	-2.902	0.000
Country of residence: Germany	-0.588	-3.134	0.002	-0.521	-4.047	0.000	-0.608	-5.534	0.000	-1.115	-6.274	0.000	-0.452	-1.995	0.046	0.006	0.040	0.968	-0.169	-1.129	0.289
Gender: Female	0.144	0.692	0.489	0.090	0.659	0.510	0.178	1.455	0.146	0.445	2.048	0.041	0.431	1.609	0.108	-0.271	-1.928	0.054	0.268	1.575	0.160
Age	-0.014	-2.019	0.044	-0.002	-0.395	0.693	-0.010	-2.786	0.005	-0.008	-1.291	0.197	-0.014	-1.819	0.069	-0.002	-0.499	0.618	-0.025	-4.555	0.000
Highest education	0.003	0.056	0.955	-0.061	-1.503	0.133	0.051	1.332	0.183	-0.050	-0.846	0.397	-0.073	-1.019	0.308	-0.067	-1.436	0.151	0.023	0.471	0.655
Concerned about life stability	0.134	2.021	0.043	0.201	4.365	0.000	0.142	3.553	0.000	0.087	1.330	0.183	0.215	2.786	0.005	0.148	2.795	0.005	0.092	1.726	0.000
Hopeful for an end of COVID19	-0.093	-1.309	0.190	-0.116	-2.297	0.022	-0.058	-1.350	0.177	-0.207	-3.021	0.003	-0.066	-0.755	0.450	-0.041	-0.710	0.478	-0.025	-0.446	0.655
Financial Impact: Yes	0.015	0.207	0.836	-0.075	-1.430	0.153	-0.010	-0.236	0.813	0.086	1.244	0.213	-0.074	-0.829	0.407	0.000	-0.006	0.995	-0.062	-1.029	0.303
Work-changes -	0.167	0.840	0.401	-0.080	-0.601	0.548	-0.126	-1.085	0.278	-0.130	-0.687	0.492	-0.026	-0.105	0.916	0.231	1.510	0.131	-0.003	-0.020	0.984

Home Office: Yes	0.819	2.158	0.031	0.255	0.845	0.398	0.128	0.445	0.657	0.240	0.597	0.551	0.342	0.649	0.517	0.634	2.064	0.039	0.258	0.697	0.480
Work- changes – Unpaid leave: Yes	0.366	1.087	0.277	0.269	1.099	0.272	-0.059	-0.234	0.815	-1.628	0.103	0.204	0.438	0.661	0.226	0.768	0.442	0.802	0.423	0.101	0.300
Work- changes – Lost job: Yes	0.294	1.223	0.221	-0.186	-1.067	0.286	0.112	0.793	0.428	-0.029	-0.126	0.899	0.552	2.138	0.033	0.334	1.852	0.064	0.289	1.594	0.300
Work- changes – No change: Yes	-0.145	-1.478	0.139	-0.211	-3.067	0.002	-0.159	-2.657	0.008	0.106	1.125	0.261	-0.177	-1.454	0.146	0.003	0.035	0.972	0.068	0.880	0.300
Impact on quality of family relations	-0.411	-3.968	0.000	-0.244	-3.420	0.001	-0.102	-1.666	0.096	-0.233	-2.409	0.016	-0.180	-1.418	0.156	-0.377	-4.762	0.000	-0.334	-4.082	0.000
Impact on quality of social relations	0.187	2.101	0.036	0.109	1.758	0.079	0.149	2.737	0.006	0.189	2.214	0.027	0.287	2.620	0.009	0.078	1.095	0.273	0.059	0.834	0.441
Physical health status	0.567	6.257	0.000	0.441	7.174	0.000	0.298	5.608	0.000	0.246	2.936	0.003	0.336	3.167	0.002	0.356	5.247	0.000	0.562	7.979	0.000

Table 4. Results for two different logistic regression models, investigating the association between demographic variables, variables of substance use, media use and sleep (A) as well as COVID19 impact (B) and the total Schizotypal Personality Score (Total SPQ) as well as its dimensions.

	Total SPQ			Eccentricity			Paranoid Ideation			Social Anhedonia			Anomalous Experiences & Beliefs			Distorted Speech			Social Anxiety			
	E.S.	Z-val.	p-val.	E.S.	Z-val.	p-val.	E.S.	Z-val.	p-val.	E.S.	Z-val.	p-val.	E.S.	Z-val.	p-val.	E.S.	Z-val.	p-val.	E.S.	Z-val.	p-val.	
A																						
(Intercept)	3.354	33.588	<2e-16	1.155	3.831	0.000	1.631	6.174	0.000	2.585	12.295	<2e-16	0.415	1.648	0.099	1.129	4.317	0.000	1.865	8.615	<2e-16	
Country of residence: Germany	0.026	1.077	0.282	0.001	0.017	0.986	0.370	5.506	0.000	-0.004	-0.087	0.931	0.350	5.462	0.000	-0.089	-1.415	0.157	-0.270	-5.281	0.000	
Gender: Female	0.017	0.684	0.494	-0.335	-4.639	0.000	0.083	1.236	0.216	-0.273	-5.393	0.000	0.164	2.646	0.008	0.077	1.152	0.249	0.354	5.953	0.000	
Age	-0.003	-3.875	0.000	-0.009	-3.219	0.001	-0.009	-3.909	0.000	0.001	0.397	0.692	0.006	3.126	0.002	-0.005	-2.008	0.045	-0.009	-4.598	0.000	
Highest education	-0.077	10.421	<2e-16	-0.042	-1.851	0.064	-0.114	-5.958	0.000	-0.090	-5.836	0.000	-0.093	-5.220	0.000	-0.052	-2.696	0.007	-0.048	-2.975	0.003	
Alcohol consumpt.	-0.020	-4.154	0.000	-0.020	-1.370	0.171	-0.017	-1.370	0.171	-0.038	-3.712	0.000	0.000	-0.035	0.972	-0.003	-0.220	0.826	-0.031	-2.962	0.003	
Tobacco consumpt.	0.014	2.652	0.008	0.020	1.236	0.217	0.031	2.429	0.015	-0.006	-0.524	0.600	0.043	3.763	0.000	0.009	0.692	0.489	-0.009	-0.695	0.487	
Vaping consumpt.	0.045	4.716	0.000	0.121	5.057	0.000	0.035	1.334	0.182	0.027	1.216	0.224	0.008	0.299	0.765	0.066	2.830	0.005	0.039	1.852	0.064	
Marihuana consumpt.	0.038	3.706	0.000	0.027	0.879	0.380	0.040	1.516	0.130	0.009	0.404	0.686	0.049	2.018	0.044	0.053	2.055	0.040	0.042	1.918	0.055	
Social media usage	0.043	3.745	0.000	-0.013	-0.356	0.721	0.091	2.985	0.003	0.037	1.488	0.137	0.069	2.466	0.014	0.066	2.187	0.029	0.010	0.384	0.701	
Video Games	0.143	11.585	<2e-16	0.260	7.429	0.000	0.143	4.380	0.000	0.147	5.730	0.000	0.026	0.755	0.450	0.133	4.097	0.000	0.154	5.892	0.000	
Print media usage	-0.053	-4.416	0.000	-0.057	-1.542	0.123	-0.116	-3.669	0.000	-0.102	-3.931	0.000	0.049	1.666	0.096	-0.070	-2.203	0.028	-0.032	-1.259	0.208	
Sleep during the week	-0.056	-2.391	0.017	-0.134	-1.895	0.058	-0.125	-2.047	0.041	-0.075	-1.485	0.137	0.002	0.034	0.973	0.041	0.653	0.514	-0.072	-1.455	0.146	
Sleep during the weekend	-0.055	-2.526	0.012	-0.019	-0.289	0.773	-0.079	-1.388	0.165	-0.124	-2.637	0.008	-0.014	-0.261	0.794	-0.120	-2.038	0.042	0.018	0.380	0.704	
Exercise	-0.013	-1.342	0.180	-0.004	-0.151	0.880	0.015	0.617	0.537	-0.040	-1.987	0.047	0.012	0.557	0.578	-0.014	-0.555	0.579	-0.020	-0.955	0.340	

	E.S.	z-val.	p-val.	E.S.	z-val.	p-val.	E.S.	z-val.	p-val.	E.S.	z-val.	p-val.	E.S.	z-val.	p-val.	E.S.	z-val.	p-val.				
Time spent outside	-0.048	-5.125	0.000	-0.005	-0.182	0.855	-0.034	-1.354	0.176	-0.062	-3.067	0.002	-0.052	-2.288	0.022	-0.029	-1.148	0.251	-0.073	-3.517	0.000	
B																						
(Intercept)	2.196	23.994	<2e-16	-0.218	-0.775	0.438	0.426	1.779	0.075	1.034	5.365	0.000	-0.347	-1.560	0.119	0.424	1.755	0.079	0.529	2.605	0.009	
Country of residence: Germany	0.034	1.390	0.164	0.017	0.230	0.818	0.380	5.518	0.000	0.002	0.033	0.974	0.327	5.163	0.000	-0.078	-1.240	0.215	-0.244	-4.709	0.000	
Gender: Female	-0.087	-3.623	0.000	-0.535	-7.733	0.000	-0.009	-0.145	0.885	-0.373	-7.715	0.000	0.106	1.775	0.076	-0.035	-0.547	0.584	0.265	4.568	0.000	
Age	-0.007	-8.805	< 2e-16	-0.010	-4.415	0.000	-0.014	-6.760	0.000	-0.004	-2.675	0.007	0.006	3.450	0.001	-0.008	-4.156	0.000	-0.013	-7.412	0.000	
Highest education	-0.063	-7.982	0.000	-0.050	-2.027	0.043	-0.099	-4.839	0.000	-0.067	-3.989	0.000	-0.106	-5.727	0.000	-0.033	-1.555	0.120	-0.016	-0.913	0.361	
Concerned about life stability	0.021	2.286	0.022	-0.005	-0.181	0.857	0.067	2.793	0.005	0.030	1.527	0.127	0.067	3.069	0.002	-0.045	-1.799	0.072	-0.001	-0.046	0.964	
Hopeful for an end of COVID19	-0.029	-2.990	0.003	-0.053	-1.762	0.078	-0.003	-0.108	0.914	-0.030	-1.457	0.145	-0.025	-1.081	0.280	-0.024	-0.951	0.342	-0.036	-1.762	0.078	
Financial impact: Yes	0.021	2.159	0.031	0.067	2.224	0.026	0.009	0.331	0.740	-0.029	-1.377	0.169	0.090	3.962	0.000	0.020	0.786	0.432	0.003	0.119	0.905	
Work-changes - Home Office: Yes	-0.067	-2.703	0.007	0.009	0.118	0.906	-0.089	-1.347	0.178	-0.038	-0.707	0.479	-0.001	-0.019	0.985	-0.082	-1.258	0.208	-0.151	-2.792	0.005	
Work-changes - Unpaid leave: Yes	-0.299	-4.071	0.000	-0.270	-1.138	0.255	-0.357	-1.835	0.066	-0.501	-2.805	0.005	-0.321	-1.884	0.060	-0.079	-0.457	0.648	-0.276	-1.788	0.074	
Work-changes - Lost job: Yes	-0.045	-0.765	0.444	-0.119	-0.630	0.529	0.076	0.542	0.588	-0.041	-0.318	0.750	-0.041	-0.294	0.769	0.151	1.043	0.297	-0.260	-1.913	0.056	
Work-changes - No change: Yes	0.080	2.690	0.007	0.139	1.502	0.133	0.036	0.453	0.650	0.144	2.306	0.021	0.115	1.643	0.100	-0.079	-0.963	0.335	0.096	1.497	0.134	

Impact on quality of family relations	0.075	5.591	0.000	0.103	2.476	0.013	0.058	1.643	0.100	0.068	2.396	0.017	0.113	3.436	0.001	0.073	2.074	0.038	0.051	1.797	0.072
Impact on quality of social relations	-0.010	-0.736	0.462	0.028	0.682	0.495	-0.052	-1.434	0.152	-0.089	-3.107	0.002	0.033	1.020	0.308	0.015	0.426	0.670	0.023	0.797	0.426
Physical health status	0.131	10.834	<2e-16	0.188	5.049	0.000	0.090	2.800	0.005	0.146	5.660	0.000	0.107	3.553	0.000	0.115	3.608	0.000	0.148	5.703	0.000
Mental health status	0.174	15.139	<2e-16	0.234	6.603	0.000	0.232	7.650	0.000	0.188	7.719	0.000	0.068	2.409	0.016	0.142	4.731	0.000	0.194	7.859	0.000

Supplementary materials

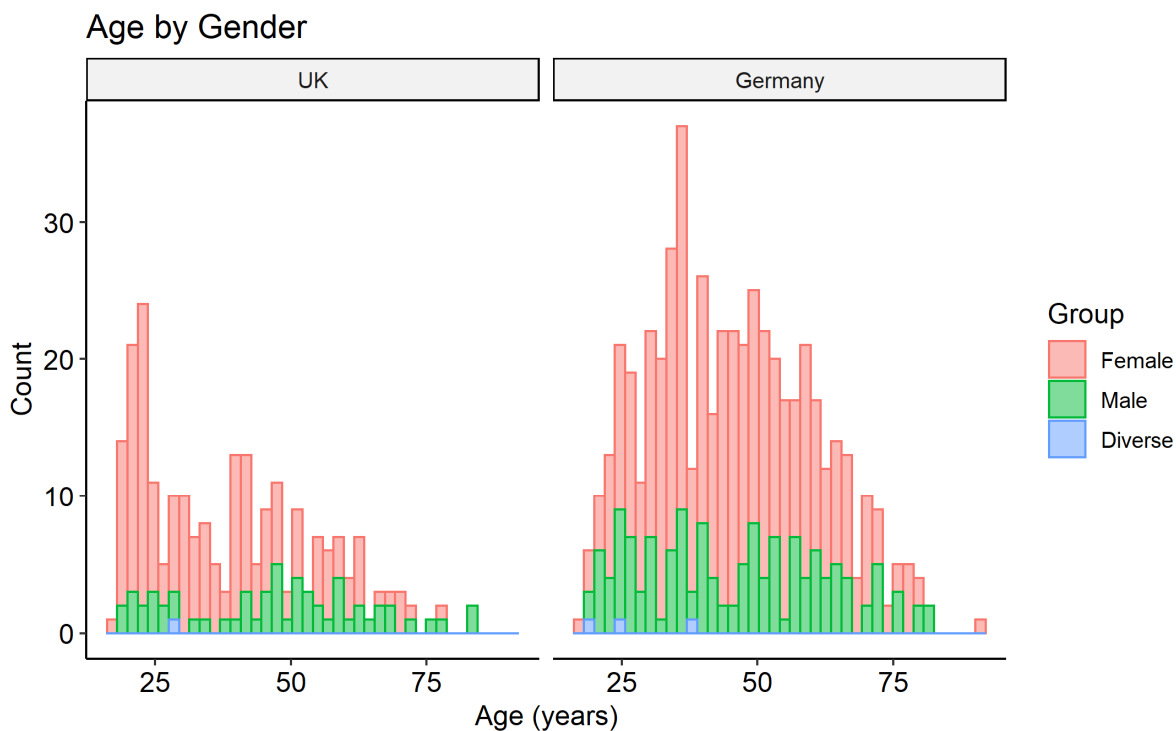
The impact of the COVID-19 pandemic on mental health in the general population – a comparison between Germany and the UK

Franziska Knolle^{1,2}, Lisa Ronan², Graham K. Murray^{2,3}

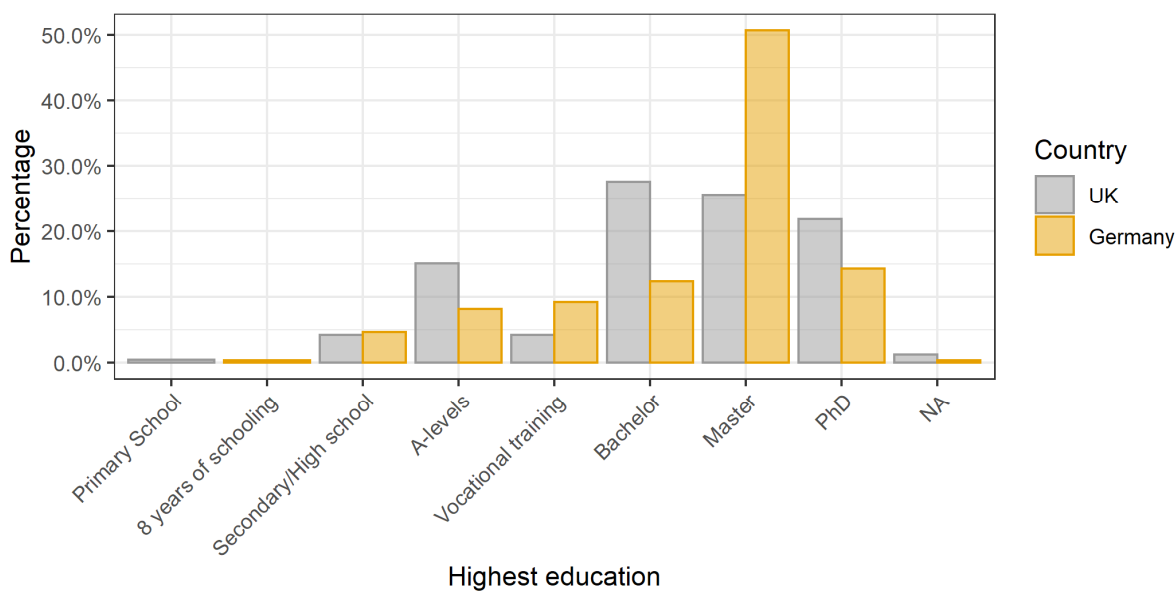
¹ Department of Neuroradiology, Klinikum rechts der Isar, TUM, München, Germany

² Department of Psychiatry, University of Cambridge, Cambridge UK

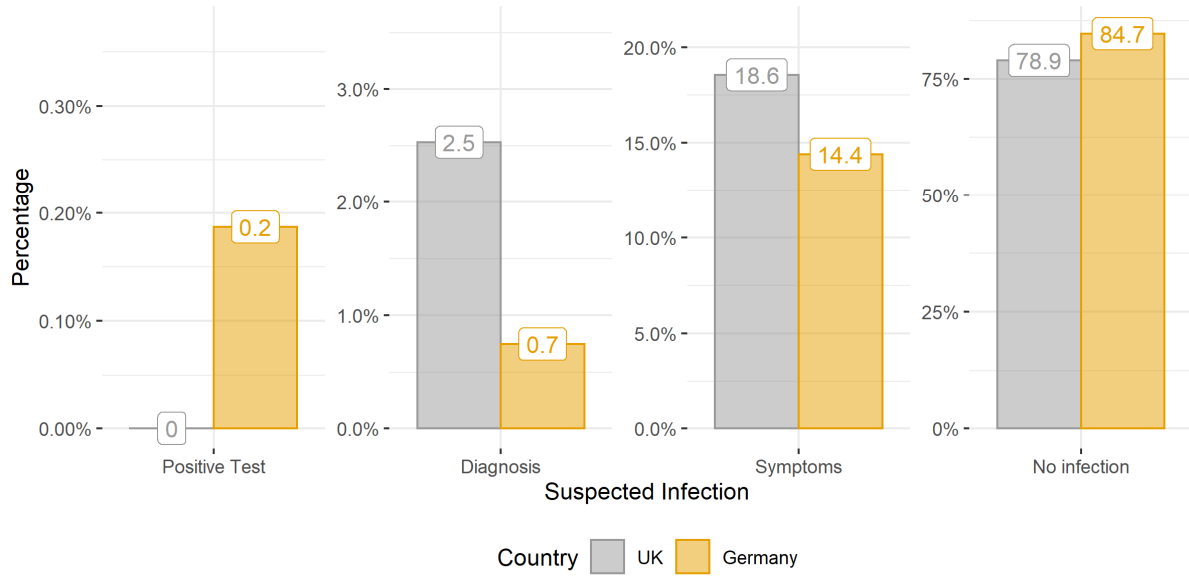
³ Cambridgeshire and Peterborough NHS Foundation Trust, Cambridge, United Kingdom



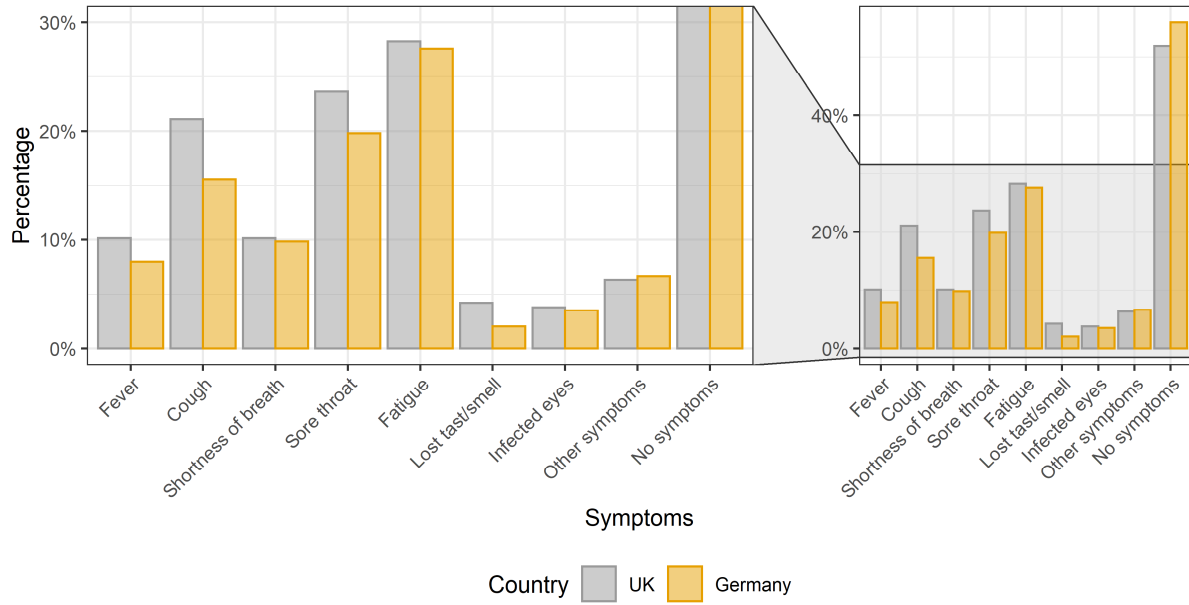
Suppl. Figure 1. Distribution of age by gender for the UK and Germany separately.



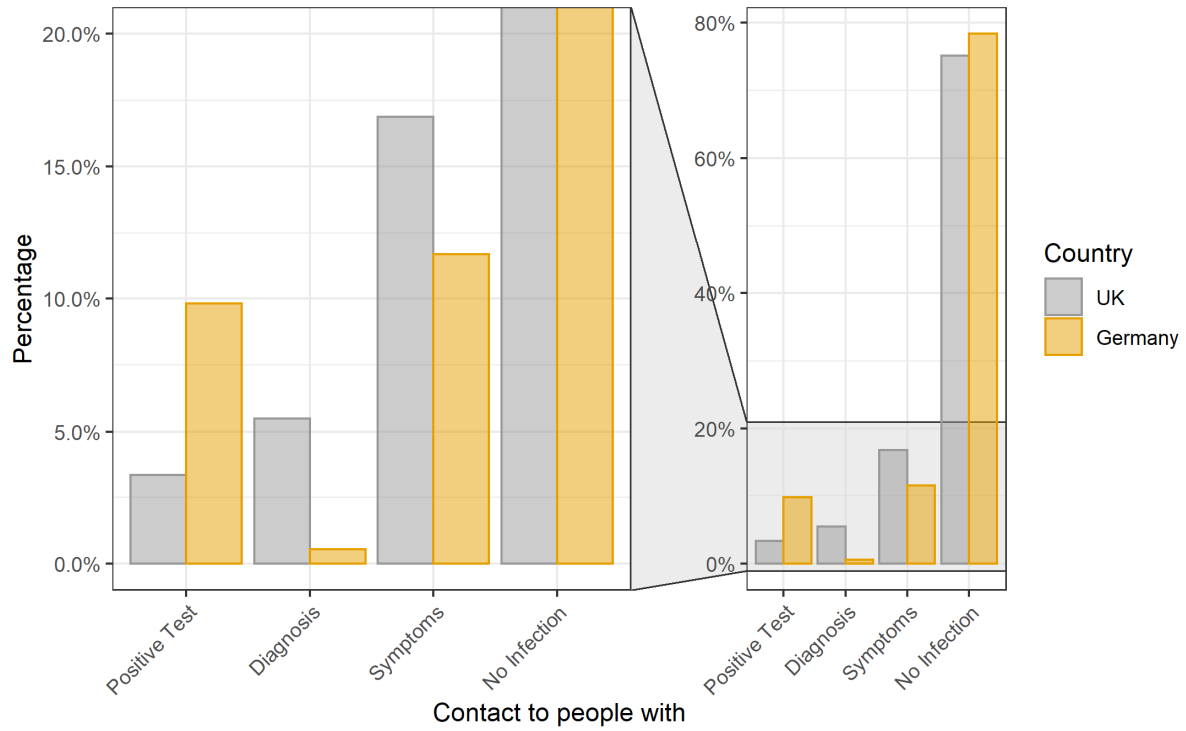
Suppl. Figure 2. Distribution of highest personal education by country.



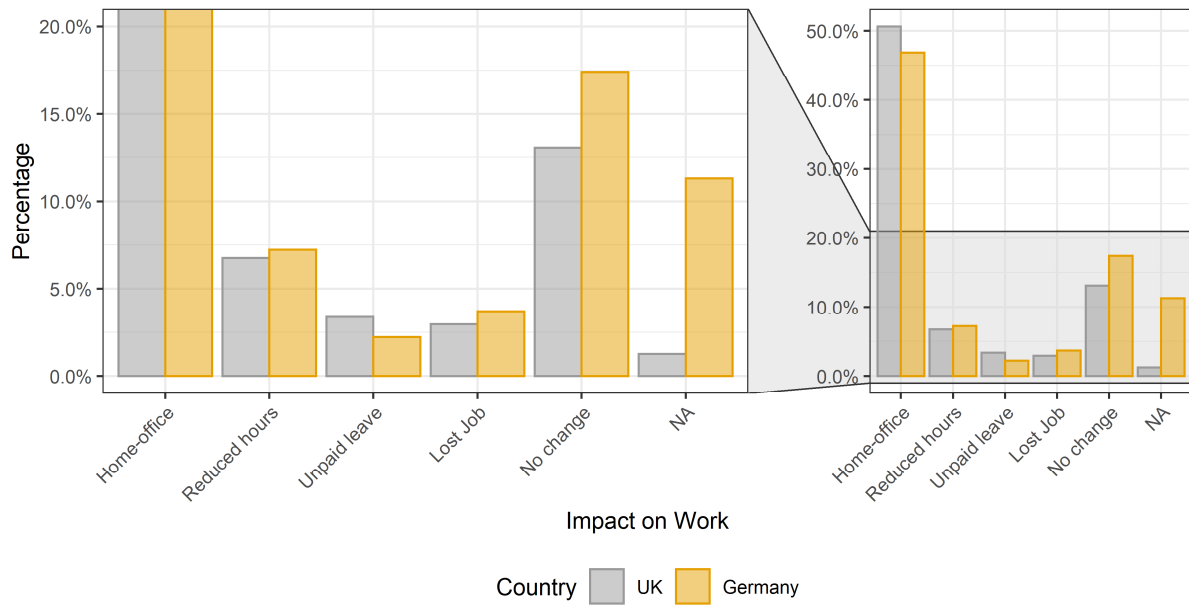
Supp. Figure 3. Percentage of suspected infection by country, presented in varying scales.



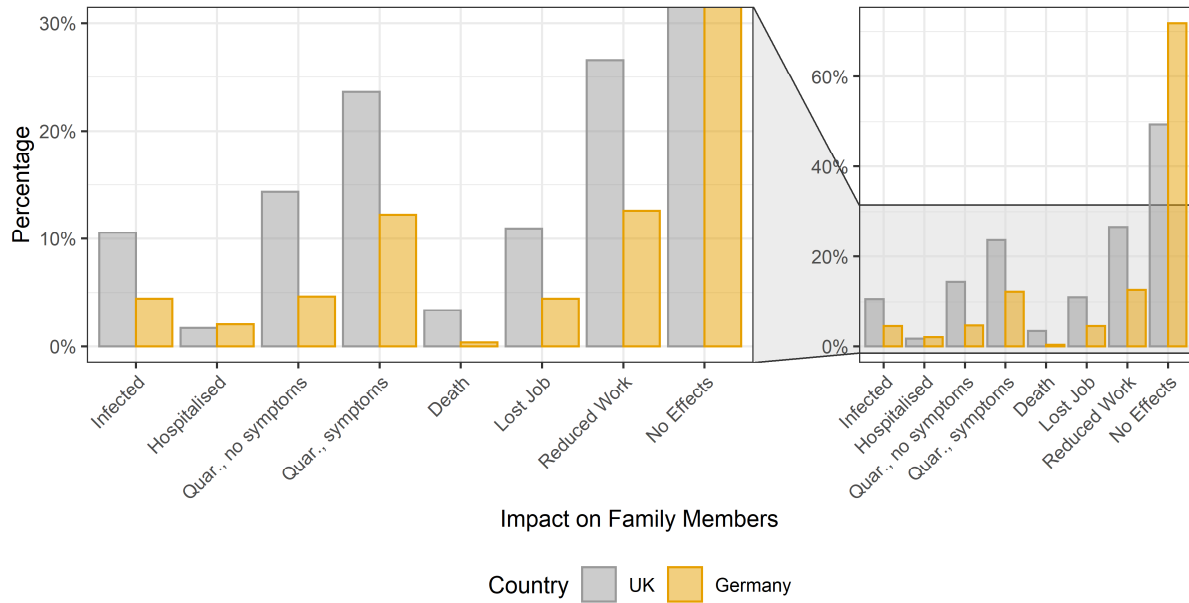
Supp. Figure 4. Distribution of symptoms by country, with close-up presented in the left panel.



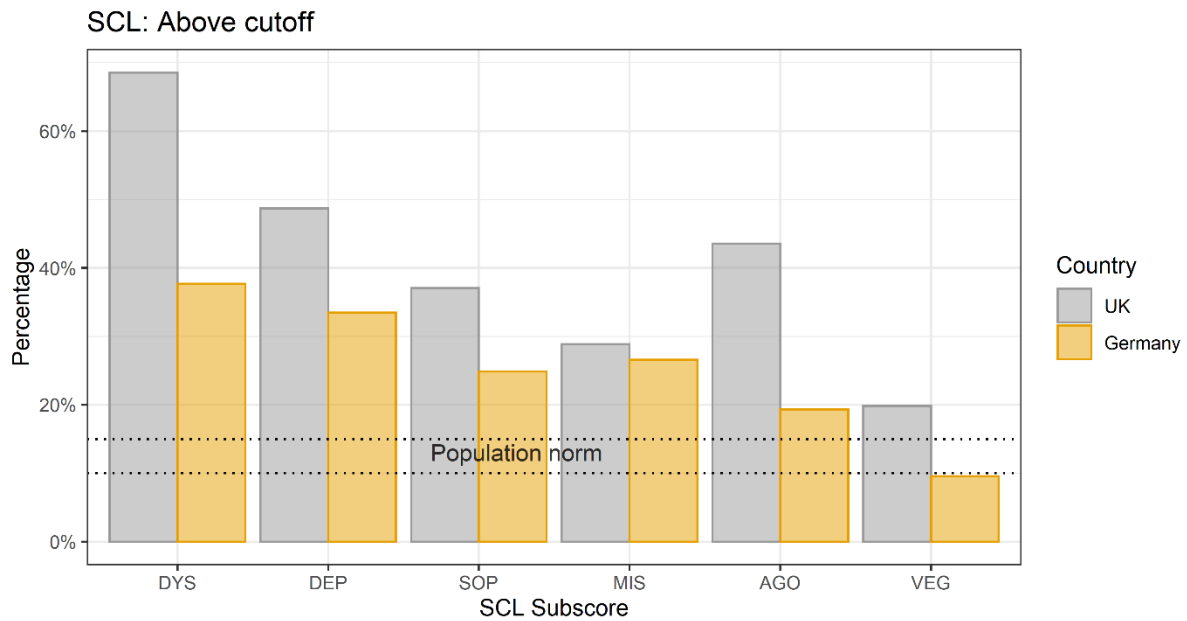
Supp. Figure 5. Distribution of contacts to people with possible infections by country, with close-up presented in the left panel.



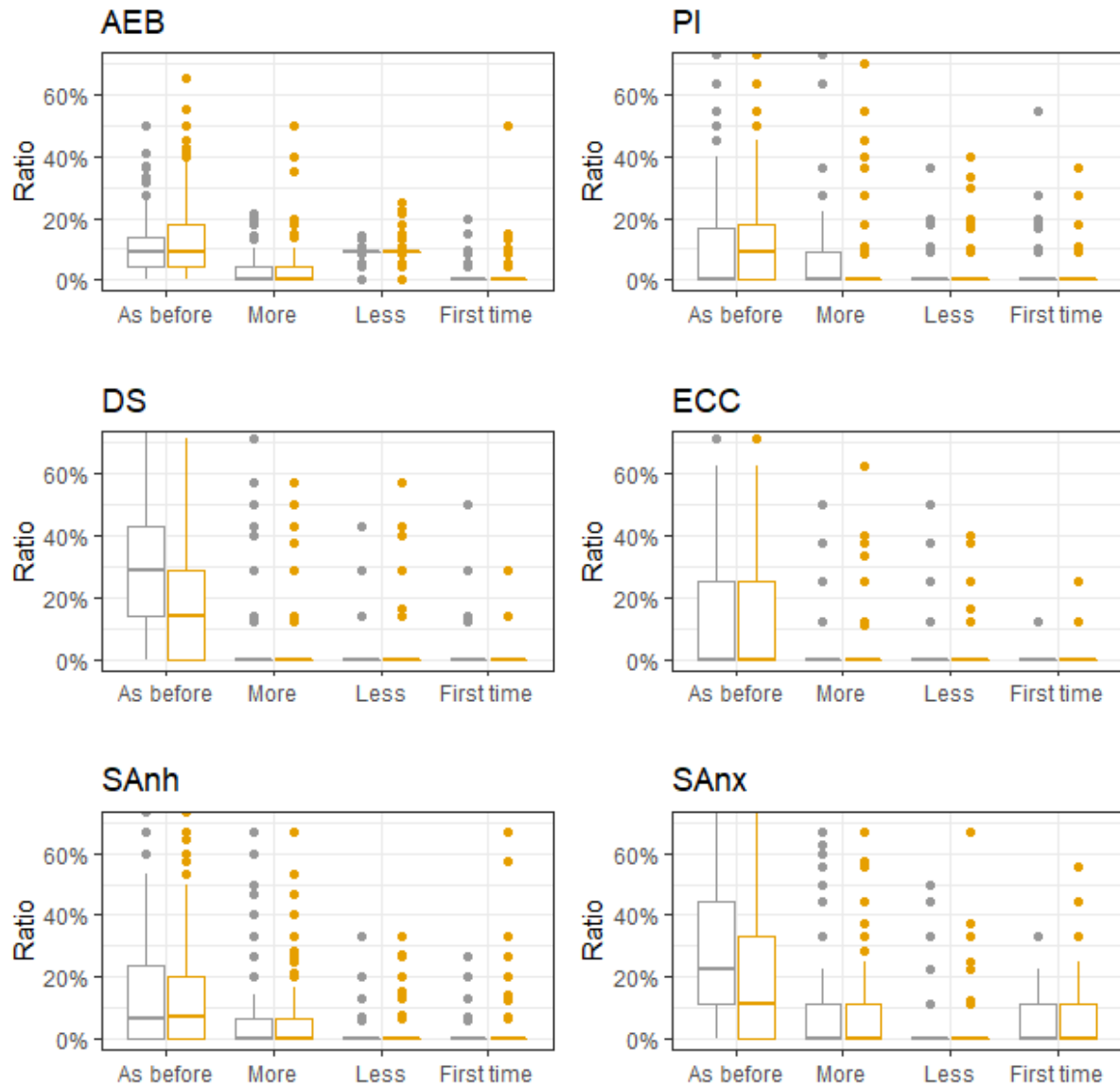
Supp. Figure 6. Impact on working situation by country, with close-up presented in the left panel.



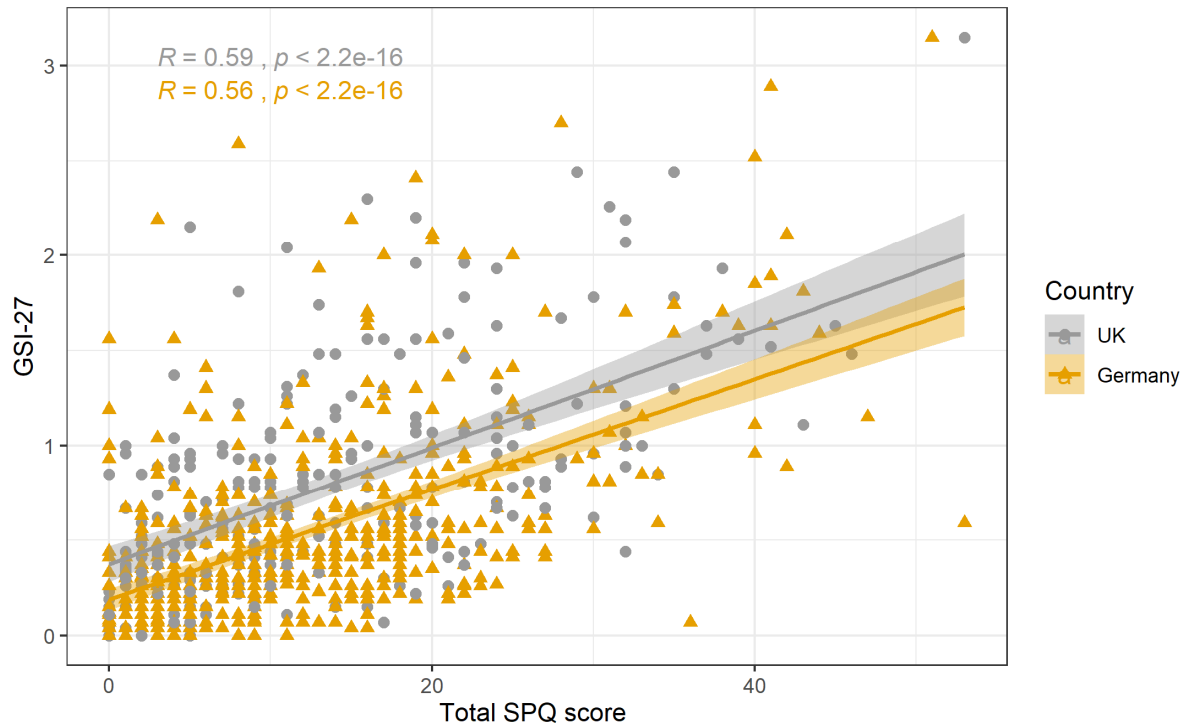
Supp. Figure 7. Impact on family by country, with close-up presented in the left panel.



Supp. Figure 8. Percentage of responders above clinical cut-off separately for UK and Germany. Dotted lines represent the percentage of the norm population above threshold. DYS: dysthymic symptoms, DEP: depressive symptoms, SOP: symptoms of social phobia, MIS: symptoms of mistrust, AGO: agoraphobic symptoms, VEG: vegetative symptoms.



Supp. Figure 9. Each boxplot shows the subjective change of one of the sub-dimensions (experiences and beliefs (AEB), social Anhedonia (SAnh), paranoid ideation (PI), social anxiety (SAnx), eccentricity (Ecc), and disorganised speech (DS)) of the SPQ during the pandemic, separately for Germany (yellow-orange) and the UK (grey).



Supp. Figure 10. Pearson correlation between GSI-27 and total SPQ score, separately per country. GSI-27 and SPQ total reveal a strong positive correlation.