

Efficacy of Localized Lockdowns in the SARS-CoV-2 Pandemic

Authors: Yige Li^{1,2}, Eduardo A. Undurraga^{3,4}, José R. Zubizarreta^{1,2,5*}

Affiliations:

¹ Department of Health Care Policy, Harvard Medical School, 180A Longwood Avenue, Office
5 307-Z, Boston, MA 02115; email: yige_li@hcp.med.harvard.edu.

² Department of Biostatistics, Harvard School of Public Health, Huntington Avenue,
Boston, MA 02115, USA

³ Escuela de Gobierno, Pontificia Universidad Católica de Chile, Vicuña Mackenna 4860, Macul,
Santiago 7820436, Chile; email: eundurra@uc.cl.

⁴ Millennium Initiative for Collaborative Research in Bacterial Resistance (MICROB-R), Chile.
10

⁵ Department of Statistics, Harvard Faculty of Arts and Sciences, 1 Oxford Street, Cambridge,
MA 02138, USA; email: zubizarreta@hcp.med.harvard.edu.

*Correspondence to: zubizarreta@hcp.med.harvard.edu.

15

Abstract

Six months into the pandemic, non-pharmaceutical interventions (e.g., social distancing) are the only available measure to control severe acute respiratory syndrome-coronavirus 2 (SARS-CoV-2) transmission. Around the world, policymakers have implemented localized lockdowns in small geographic areas to prevent spread of the disease. Using an integrated dataset from Chile, we estimated the direct and indirect (spillover) causal effects of localized lockdowns on SARS-CoV-2 transmission. Our results show that the effectiveness of localized lockdowns is strongly modulated by duration and is affected by spillover effects from neighboring geographic areas. Our projections suggest that extending localized lockdowns will slow down the epidemic but by themselves will be unable to control epidemic growth due to spillovers from neighboring areas with high interdependencies, unless those contiguous areas also implement lockdowns.

20

25

Behavioral non-pharmaceutical interventions (NPIs) are the only readily available measures to prevent and control transmission of the severe acute respiratory syndrome-coronavirus 2 (SARS-CoV-2). NPIs range from simple individual-level recommended behaviors, such as wearing face masks, frequent hand-washing, or maintaining physical distance; to society-level regulatory actions, such as school closures, quarantines, or lockdowns (1). The effects of those interventions have been typically described using mathematical models (2-5) and have informed health policy since the beginning of the pandemic (6, 7). However, there is a lack of empirical evidence of the causal effects of NPIs (8, 9), as most research focuses on associations (10, 11). Understanding the impact of NPIs in SARS-CoV-2 transmission is crucial, because those interventions will probably continue until an effective vaccine or treatment becomes available (1, 2).

Several countries have managed to control the SARS-CoV-2 epidemic using NPIs (5, 12-14). As governments have begun easing restrictions, localized lockdowns are becoming an increasingly relevant policy option in cases of resurgence (15-17). Localized lockdowns are typically implemented in transmission hotspots and can be implemented for populations/areas large and small to suppress an outbreak. In principle, localized lockdowns can reduce social and economic costs compared to larger-scale SARS-CoV-2 suppression strategies and can provide a gradual exit from nationwide lockdowns. Early in the pandemic, the Chinese government imposed a localized lockdown and other strict NPIs in the city of Wuhan (5), effectively suppressing the SARS-CoV-2 transmission (10). Subsequently, similar targeted lockdowns have been implemented in neighborhoods (e.g., Beijing, China), suburbs (e.g., Melbourne, Australia), towns (e.g., Vo, Italy), districts (e.g., North Rhine-Westphalia, Germany), and, most recently, at the city level in Leicester, England (12, 16). Despite the increasing prevalence of localized lockdowns, there is limited evidence of their effectiveness.

On May 22, 2020, the World Health Organization declared South America the new epicenter of COVID-19, the disease caused by SARS-CoV-2. The first COVID-19 case in Chile was reported in March 3, 2020, and by the end of March, national borders, schools, and non-essential businesses were closed and night-time curfews were enforced (18) (Fig. 1A). Most importantly, policymakers in Chile implemented localized lockdowns at the municipality (*comuna*) level, the smallest administrative subdivision in the country, at various points in time. The criteria used by the government to impose lockdowns were loosely defined as a function of the number and density (per km²) of infectious COVID-19 cases, increases in case incidence, and health system capacity (18). Across the country, there was substantial variation in the duration of these municipality-level localized lockdowns and, for each municipality under lockdown, in the lockdown status of neighboring municipalities. We used this policy as a natural experiment to evaluate the efficacy of localized lockdowns on SARS-CoV-2 transmission.

Allowing for interference between municipalities (19, 20), we estimated the individual direct effects of extending the duration of these local lockdowns and the individual total (sum of direct and spillover) effects of maintaining lockdowns in neighboring municipalities. We characterized transmission by the instantaneous reproduction number (R_t); that is, the average number of secondary cases per primary infected case (21). We did this using causal time-series analysis at the municipality level based on the daily series of COVID-19 cases reported by the Ministry of Health (22), adjusted for the time-lag between onset of symptoms and case report (Fig. 1A) (10, 21). Based on the potential outcomes framework for causal inference (23, 24), we used the augmented synthetic control method to analyze the progression of the epidemic in comparable municipalities that underwent different lockdown interventions (25, 26), varying the duration of the intervention (Δ_D) and the proportion of the population under lockdown in the neighboring

75 municipalities at each time point t (P_t) (Fig. 1E). We estimated the counterfactual progression that the disease would have exhibited had an alternative lockdown policy taken place (Fig. 1E). We adjusted for or balanced several municipality-level characteristics that may affect virus transmission (table S2) including: the proportion of the population that is rural, female, older than 65 years of age, living in poverty, living in overcrowded households (≥ 2.5 people per room), or lacks adequate sanitation infrastructure (access to potable water and sewage); average 80 monthly income, and municipality area. We analyzed all the municipalities in Greater Santiago that started their first lockdown after March 15, 2020 and finished by May 15, 2020 (Fig. 1B); that is, the first period of confinement that arguably shaped the evolution of the epidemic (Fig. 1A, 1C). Our data set combined information from administrative COVID-19 surveillance records (22), a nationally representative household survey (27), and census data (28) (Supplementary 85 Materials). We provide open-source code with step-by-step explanations to implement the analyses in related settings.

Overall, our results suggest that the effectiveness of localized lockdowns is strongly modulated by the duration of the intervention and the amount of spillover from neighboring geographic areas. The larger the proportion of neighbors under lockdown, the higher the efficacy to control 90 transmission. We illustrate these findings with three representative municipalities in Greater Santiago that were put under lockdown on March 26: Lo Barnechea, Providencia, and Santiago (Fig. 2; see the Supplementary Materials for additional results). There is a high degree of economic and social interdependency among municipalities within the city, particularly for the municipality of Santiago, which hosts much of the country's financial, commercial, and political 95 activity, as well as all major government infrastructure. Fig. 2 shows a large reduction in R_t (Fig. 2B) and COVID-19 cases (Fig. 2C) with an extended lockdown. Had the lockdown been

extended for three additional weeks, maintaining P_t constant, we estimate that the reduction in R_t would have been larger. The average R_t would have decreased from 1.83 to 1.27 (difference: -0.56, 95% confidence interval [CI]: [-0.63,-0.50]) in Lo Barnechea, from 1.82 to 1.34 (difference: -0.47, 95% CI: [-0.59,-0.36]) in Providencia, and from 1.95 to 1.23 (difference: -0.72, 95% CI: [-0.85,-0.58]) in Santiago. These reductions in R_t are equivalent to 177 (95% CI: [167,188]; or 143 per 100,000 population) averted COVID-19 cases over three weeks in Lo Barnechea, 94 (95% CI: [76,111]; or 59 per 100,000 population) averted cases in Providencia, and 1343 (95% CI: [1245,1441]; 267 per 100,000 population) averted cases in Santiago, which would represent 33-62% reductions in reported cases in that timeframe.

The reductions in transmission would have been even larger if it was possible to control lockdowns in neighboring municipalities to reduce spillover effects. Assuming neighboring municipalities of Lo Barnechea, Providencia, and Santiago maintained their lockdown status ($P_t=53.0\%$, $P_t=80.3\%$, and $P_t=35.8\%$) for three additional weeks, we estimate that the average R_t would have decreased to 1.19 (95% CI: 1.13, 1.25), 1.25 (95% CI: 1.14, 1.37), and 1.21 (95% CI: 1.08, 1.34), respectively (Fig. 2B). Figs. 3A and 3B show the relationship between daily COVID-19 incidence and days of extended lockdown as a function of changes in P_t , after adjusting for observed covariates. The larger P_t , the greater the number of averted cases. Overall, results in Greater Santiago suggest that the decision to reopen these municipalities was premature, especially when lockdowns were brief, because the effectiveness of lockdowns strongly depends on the duration of the intervention and the amount of spillovers (findings for other municipalities with lockdowns are consistent with these results; Figs. S3-S6).

Fig. S5 reaffirms the results from a different angle. As happened with Lo Barnechea, Providencia, and Santiago, the municipality of Punta Arenas was placed under lockdown early

120 on in the pandemic, from April 1 to May 7. It initiated lockdown with one of the highest case
incidence per 100,000 population in the country. Notably, Punta Arenas is geographically
isolated and has few local interdependencies that could result in active transmission networks
during a localized lockdown. Our estimates show negligible spillover effects: increasing P_t from
0 to 1 would only result in a reduction of $R_t = 0.02$ (Fig. S5 and Table S13), probably due its
125 geographical isolation and minor interdependencies with neighboring municipalities.

Having assessed the role of duration and spillovers, we evaluate the impact of lockdowns in
geographic areas of increasing size. We considered three target lockdown areas (Fig. 4A): the
municipality of Ñuñoa (red), a cluster of six municipalities (orange), and Greater Santiago
(green). We extended the study period to encompass the mandatory lockdown for Greater
130 Santiago that began on May 15, and varied the population under lockdown in the targeted area
and the proportion of the population under lockdown in neighboring municipalities (P_t). Fig. 4B
shows the estimated R_t from March 15 to June 15. In general, an epidemic will continue to grow
as long as R_t is greater than one. Fig. 4 shows that the epidemic kept expanding in all three target
areas until a city-wide lockdown was implemented on May 15. These results highlight the
135 challenges of suppressing virus transmission in areas with a high degree of economic and social
interdependencies, such as Chile's capital, when there is a substantial proportion of neighbors
that are not under lockdown.

Epidemiologists have long known that the only way to stop an epidemic is to break the chain of
transmission. Today, strategies to suppress SARS-CoV-2 transmission are limited to NPIs. In
140 principle, localized lockdowns can break transmission chains by limiting contact between
infectious and susceptible individuals, and this goal could be achieved at household,
neighborhood, municipality, county, or state levels. The social distancing imposed by a

lockdown, however, must be maintained and enforced until an adequate control of transmission is achieved. Localized lockdowns may also provide a gradual exit to larger-scale strategies at lower cost, if effectively implemented. In this paper, we have shown that effective
145 implementation of localized lockdowns is challenging and is affected by spillovers from neighboring areas where transmission networks exist, such as in a city.

We used recent methods from the causal inference literature to provide empirical estimates for the effects of localized lockdowns and, crucially, of the effects of interventions on neighboring
150 areas. We found that localized lockdowns can help contain transmission, but their efficacy is dependent on the duration of the intervention and potential spillovers from neighboring areas. For instance, the efficacy of localized lockdowns within Greater Santiago, where there is high economic and social interdependency between municipalities, was strongly affected by suppression measures in place in neighboring municipalities. In contrast, localized lockdowns
155 showed good results in municipalities such as Punta Arenas, which are geographically isolated and thus have transmission networks that are relatively unaffected by neighboring areas.

References

1. W. J. Wiersinga, A. Rhodes, A. C. Cheng, S. J. Peacock, H. C. Prescott, Pathophysiology, Transmission, Diagnosis, and Treatment of Coronavirus Disease 2019 (COVID-19): A
160 Review. *JAMA*, Online ahead of print (2020).
2. S. M. Kissler, C. Tedijanto, E. Goldstein, Y. H. Grad, M. Lipsitch, Projecting the transmission dynamics of SARS-CoV-2 through the postpandemic period. *Science* **368**, 860-868 (2020).

- 165 3. S. Flaxman *et al.*, Estimating the effects of non-pharmaceutical interventions on COVID-19
in Europe. *Nature*, online first (2020).
4. M. Chinazzi *et al.*, The effect of travel restrictions on the spread of the 2019 novel
coronavirus (COVID-19) outbreak. *Science* **368**, 395-400 (2020).
5. X. Hao *et al.*, Reconstruction of the full transmission dynamics of COVID-19 in Wuhan.
170 *Nature*, (2020).
6. N. Ferguson *et al.*, Report 9: Impact of non-pharmaceutical interventions (NPIs) to reduce
COVID19 mortality and healthcare demand. (2020).
7. K. Shea *et al.*, Harnessing multiple models for outbreak management. *Science* **368**, 577-579
(2020).
- 175 8. J. Haushofer, C. J. E. Metcalf, Which interventions work best in a pandemic? *Science* **368**,
1063-1065 (2020).
9. B. Nussbaumer-Streit *et al.*, Quarantine alone or in combination with other public health
measures to control COVID-19: a rapid review. *Cochrane Database Syst Rev*, (2020).
10. A. Pan *et al.*, Association of Public Health Interventions With the Epidemiology of the
180 COVID-19 Outbreak in Wuhan, China. *JAMA* **323**, 1915-1923 (2020).
11. Y. Xiao, B. Tang, J. Wu, R. A. Cheke, S. Tang, Linking key intervention timing to rapid
decline of the COVID-19 effective reproductive number to quantify lessons from mainland
China. *Int. J. Infect. Dis.* **97**, 296-298 (2020).
12. E. Lavezzo *et al.*, Suppression of a SARS-CoV-2 outbreak in the Italian municipality of Vo'.
185 *Nature*, 1-1 (2020).

13. B. J. Cowling *et al.*, Impact assessment of non-pharmaceutical interventions against coronavirus disease 2019 and influenza in Hong Kong: an observational study. *Lancet Public Health* **5**, e279-e288 (2020).
14. S. Cousins, New Zealand eliminates COVID-19. *Lancet* **395**, 1474 (2020).
- 190 15. R. Chowdhury *et al.*, Long-term strategies to control COVID-19 in low and middle-income countries: an options overview of community-based, non-pharmacological interventions. *Eur J Epidemiol*, (2020).
16. E. Mahase, Covid-19: How does local lockdown work, and is it effective? *BMJ* **370**, m2679 (2020).
- 195 17. B. Pradelski, M. Oliu-Barton, in *Europe in the Time of Covid-19*, A. Bénassy-Quéré, B. W. d. Mauro, Eds. (Centre for Economic Policy Research Press, London, 2020), chap. 11, pp. 83-87.
18. Ministerio de Salud (MINSAL). (Ministerio de Salud, Gobierno de Chile, Santiago, 2020), vol. 2020.
- 200 19. M. E. Sobel, What do randomized studies of housing mobility demonstrate? Causal inference in the face of interference. *J. Am. Stat. Assoc.* **101**, 1398-1407 (2006).
20. M. G. Hudgens, M. E. Halloran, Toward Causal Inference With Interference. *J Am Stat Assoc* **103**, 832-842 (2008).
- 205 21. A. Cori, N. M. Ferguson, C. Fraser, S. Cauchemez, A New Framework and Software to Estimate Time-Varying Reproduction Numbers During Epidemics. *Am. J. Epidemiol.* **178**, 1505-1512 (2013).
22. Ministerio de Salud (MINSAL). (Ministry of Health, Plan de Acción Coronavirus COVID-19, Santiago, 2020), vol. 2020.

23. G. W. Imbens, D. B. Rubin, *Causal inference in statistics, social, and biomedical sciences*.
210 (Cambridge University Press, 2015).
24. D. B. Rubin, Estimating causal effects of treatments in randomized and nonrandomized studies. *J Educ Psychol* **66**, 688 (1974).
25. E. Ben-Michael, A. Feller, J. Rothstein, The augmented synthetic control method. *arXiv preprint arXiv:1811.04170*, (2019).
- 215 26. A. Abadie, A. Diamond, J. Hainmueller, Synthetic control methods for comparative case studies: Estimating the effect of California’s tobacco control program. *J. Am. Stat. Assoc.* **105**, 493-505 (2010).
27. Ministerio de Desarrollo Social y Familia (MDSF). (Ministerio de Desarrollo Social y Familia, Gobierno de Chile, Santiago, 2019), vol. 2020.
- 220 28. Instituto Nacional de Estadísticas (INE). (INE, Santiago, 2017), vol. 2020.
29. J. Neyman, Sur les applications de la thar des probabilités aux expériences Agraricales: Essay des principe. Excerpts reprinted (1990) in English. *Stat. Sci.* **5**, 463-472 (1923).
30. E. L. Ogburn, T. J. VanderWeele, Causal diagrams for interference. *Stat. Sci.* **29**, 559-578 (2014).
- 225 31. G. Hooker, S. P. Ellner, L. D. V. Roditi, D. J. Earn, Parameterizing state–space models for infectious disease dynamics by generalized profiling: measles in Ontario. *J R Soc Interface* **8**, 961-974 (2011).
32. P. R. Rosenbaum, D. B. Rubin, The central role of the propensity score in observational studies for causal effects. *Biometrika* **70**, 41-55 (1983).
- 230 33. R. Killick, P. Fearnhead, I. A. Eckley, Optimal detection of changepoints with a linear computational cost. *J. Am. Stat. Assoc.* **107**, 1590-1598 (2012).

34. Q. Zhao, N. Ju, S. Bacallado, Commentary: Using Symptom Onset Instead of Incidence

Results in Time-Lagged Estimate of $R(t)$. *JAMA* **323**, 1924 (2020).

35. K. M. Gostic et al., Practical considerations for measuring the effective reproductive number,

235 Rt. *medRxiv*, 2020.2006.2018.20134858 (2020).

36. Q. Li et al., Early transmission dynamics in Wuhan, China, of novel coronavirus–infected pneumonia. *N. Engl. J. Med.* **382**, 1199-1207 (2020).

Acknowledgments

240 The authors thank Eric Cohn (Harvard School of Public Health), Eduardo Engel (Universidad de Chile), Catterina Ferreccio (Pontificia Universidad Católica de Chile), César Hidalgo (University of Toulouse), Ronald Kessler (Harvard Medical School), Guillermo Marshall (Pontificia Universidad Católica de Chile), and Bijan Niknam (Harvard University) for helpful comments and suggestions.

245 Funding

This work was partially supported by a grant from the Alfred P. Sloan Foundation (G-2018-10118), an award from the Patient-Centered Outcomes Research Institute (PCORI; ME-2019C1-16172), and the ANID Millennium Science Initiative/ Millennium Initiative for Collaborative Research on Bacterial Resistance, MICROB-R, [NCN17_081].

250 Author contributions

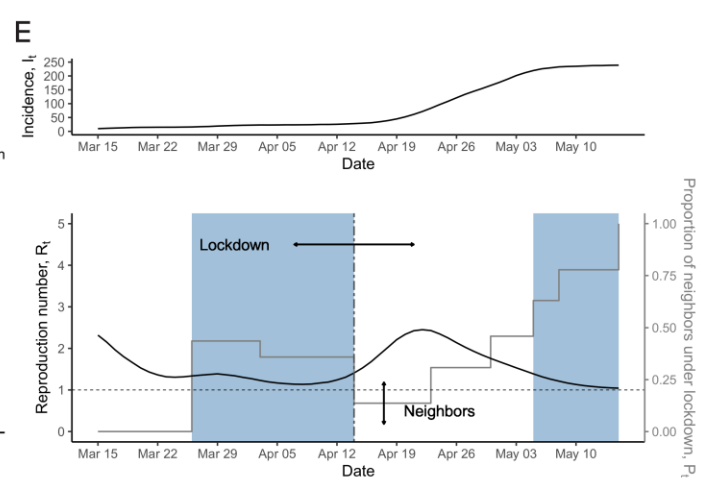
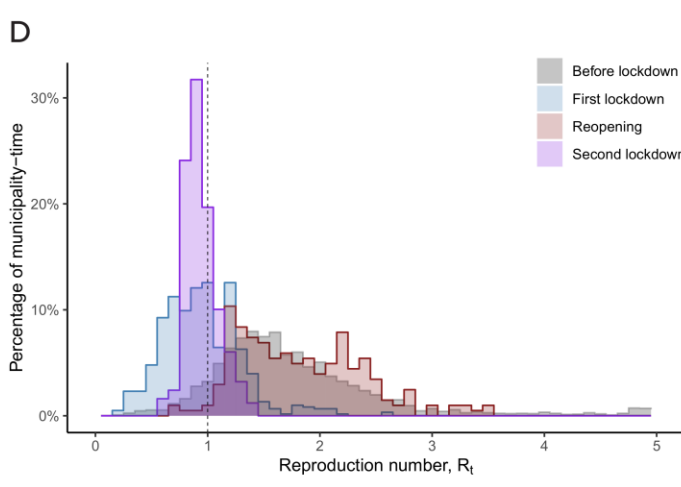
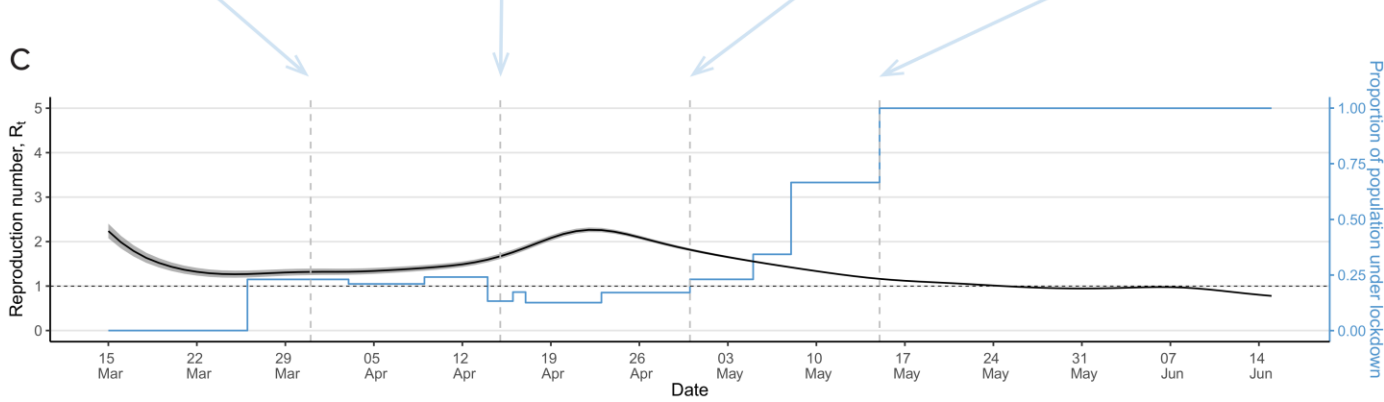
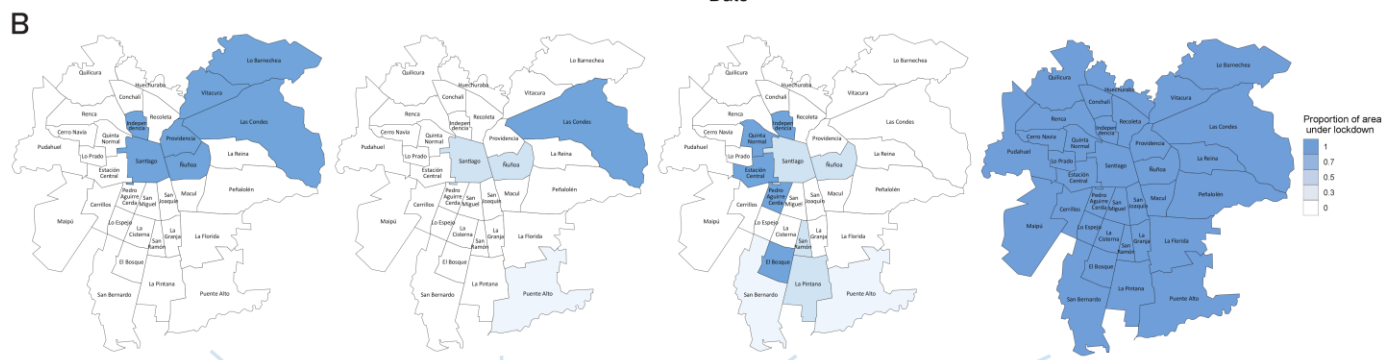
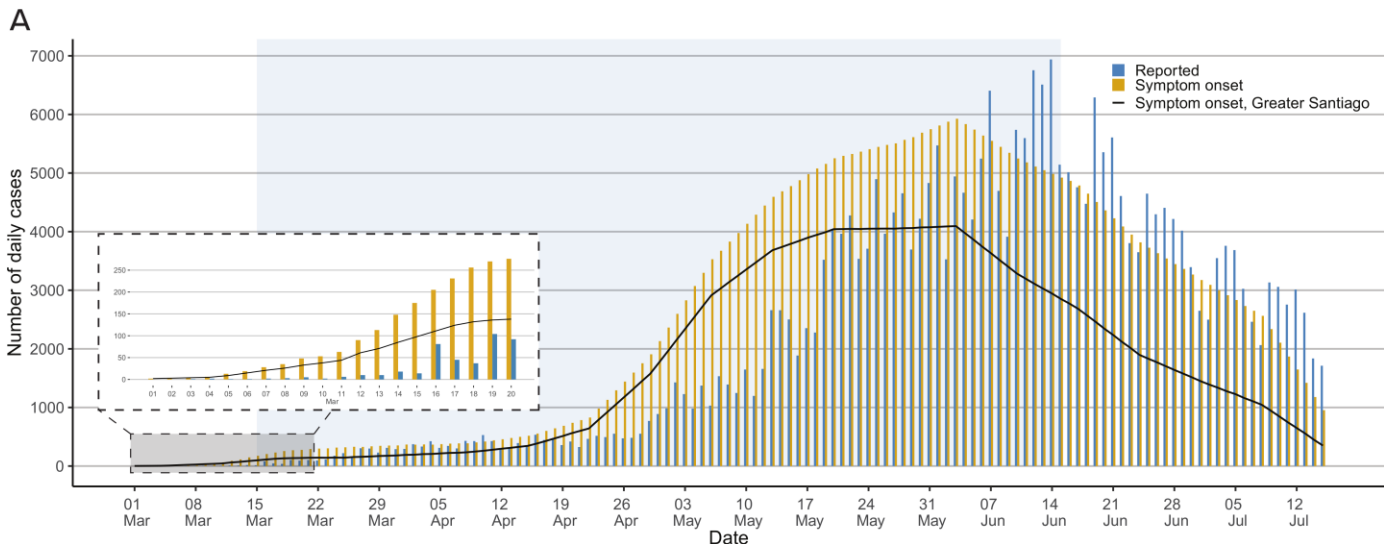
YL, EU, JZ: conceptualization, resources, data curation, results interpretation, writing and revising the manuscript. YL: data analysis. YL, JZ: modeling methods.

Competing interests

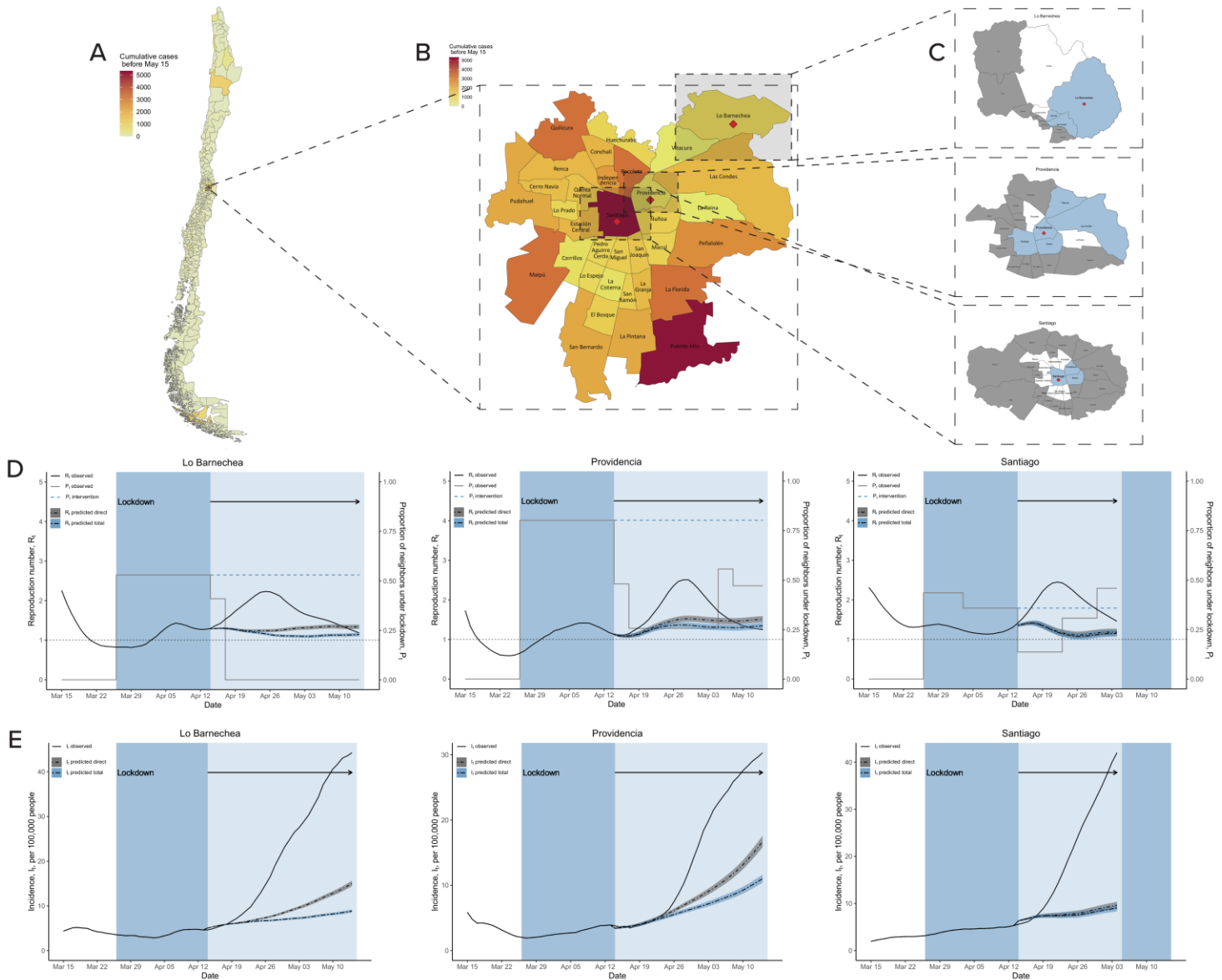
Authors declare no competing interests.

255 Data and materials availability

The datasets used and/or analyzed during the current study are available from Base de Datos CoVID-19 repository at <http://www.minciencia.gob.cl/covid19>. The R code used for analysis is available at <http://jrzubizarreta.com/>.



260 **Fig. 1. Background and study overview.** (A) Incidence of COVID-19 cases in Chile, March 1
to July 15. The majority (66%) of cases have been reported in Greater Santiago (solid line). (B)
Municipality-level lockdowns in Greater Santiago on March 31, April 15, April 30, and May 15,
2020. (C) Variation of the instantaneous reproduction number (R_t) and the proportion of the
population under lockdown in Greater Santiago over time. (D) Histogram of daily R_t for all
265 municipalities from March 15 to June 15, 2020, before lockdown, during the first lockdown,
after reopening, and during the second lockdown. Municipalities with fewer than 10 COVID-19
cases were excluded. (E) Illustration of alternative lockdown interventions of varying durations
(blue area) and proportion of neighbors under lockdown (grey line).



270 **Fig. 2. Duration and spillover effects of localized lockdowns.** (A) Cumulative COVID-19 cases
in Chile and Greater Santiago before May 15, 2020. (B) municipalities of Lo Barnechea,
Providencia, and Santiago (red diamonds), and their corresponding neighbors (blue for the
immediate neighbors under lockdown and white otherwise) on the last date under lockdown, April
13. (C, D) Estimated instantaneous reproduction number R_t and incidence I_t under different
275 lockdown interventions for each municipality (further results in the Supplementary Materials). In
(C), the grey and blue lines show the proportion of the population in the observed municipality

and surrounding municipalities under lockdown, respectively. In (C, D), the lighter shade of blue extends the duration of the lockdown that actually took place. The solid black lines show the reproduction number R_t (C) and daily incidence (D), and the dashed lines show the predicted R_t and case incidence for the extended lockdown. The direct and total effects of the extended lockdown are the difference between the solid black line and dashed line with grey and blue bands, respectively. The bands around the curves indicate 95% confidence intervals.

280

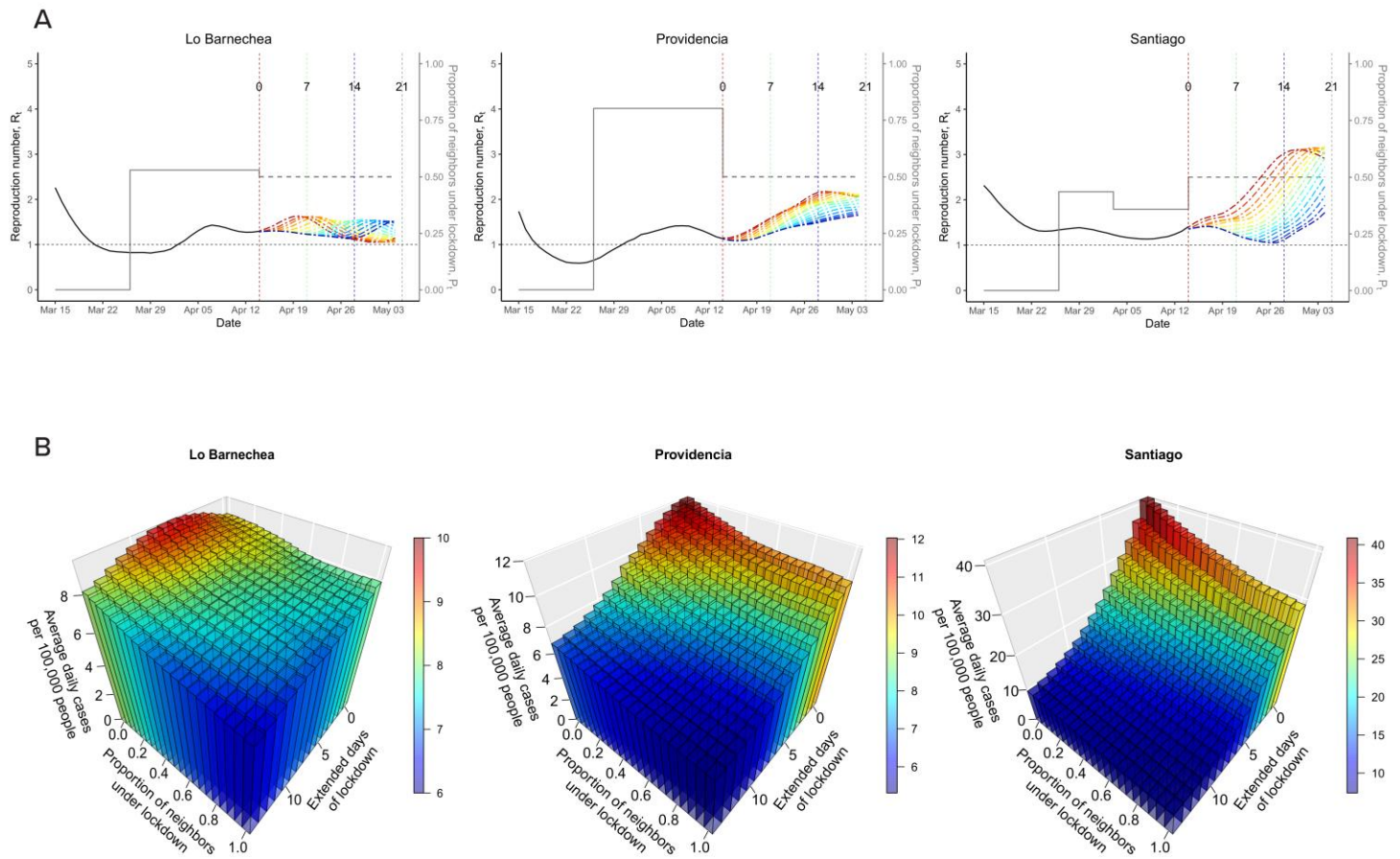
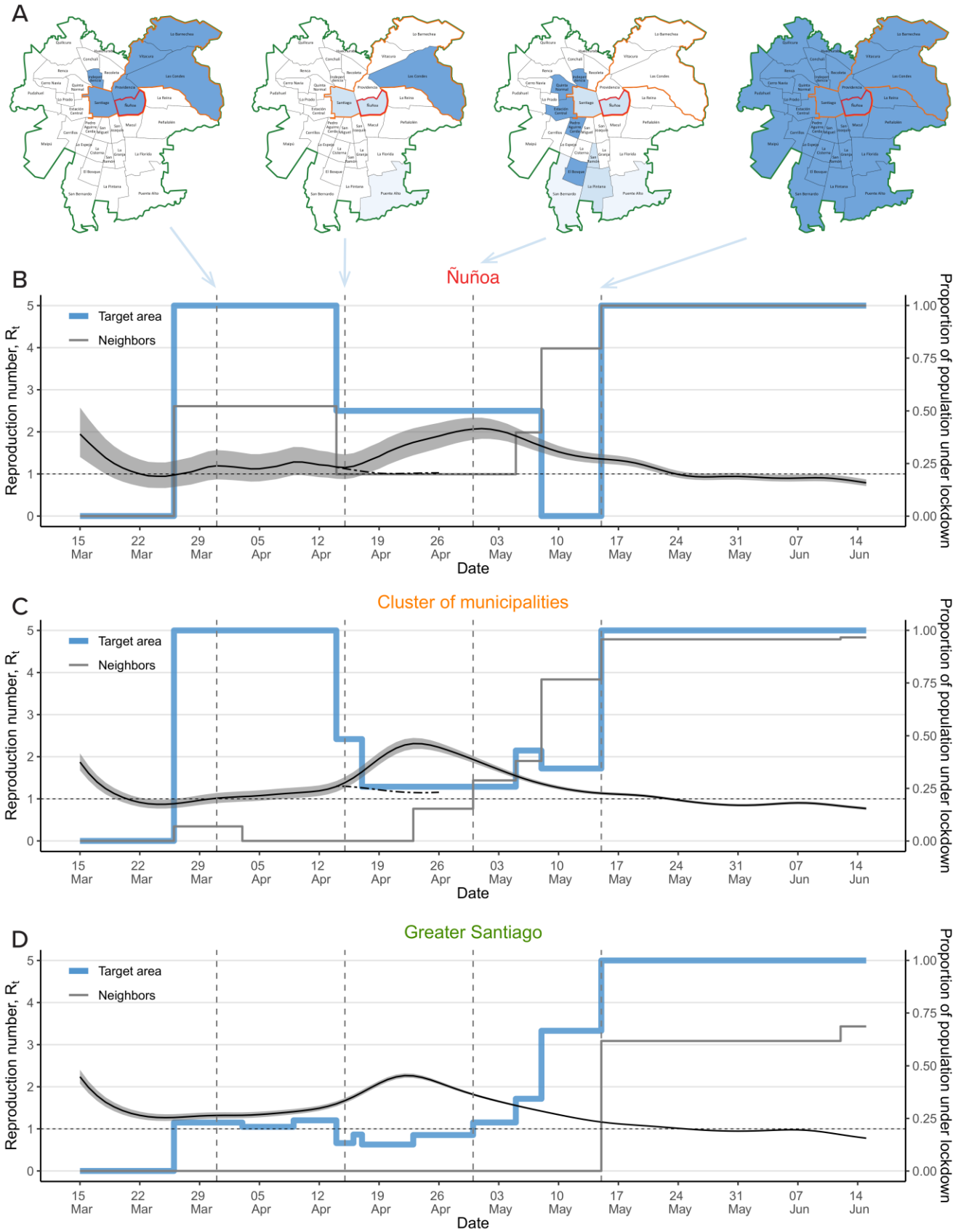


Fig. 3. Duration and spillovers strongly modulate the efficacy of lockdowns. Prediction of

285

the instantaneous reproduction number R_t as a function of time (A) with 50% of neighboring population under lockdown since intervention (lockdown extended for 0-14 days). (B) Average daily COVID-19 incidence over three weeks with a varying duration of extended lockdown ($\Delta_D = 0-14$ days) and a varying proportion of the neighboring population under lockdown ($P_t = 0-1$).



290 **Fig. 4. Efficacy of lockdowns for different target areas.** (A) In blue, municipalities of Greater
Santiago under lockdown at different points in time; outlined in red (Ñuñoa), orange (cluster of
six municipalities), and green (Greater Santiago), lockdown target areas of increasing size. (B-D)
Estimated instantaneous reproduction number R_t , with changing proportions of the population
under lockdown in each geographic area and its immediate neighboring areas. (B-C) also show
295 the predicted R_t (dashed line) had the lockdowns in the geographic area and for its immediate
neighbors been extended. (B-C) if the lockdowns in the area and the neighbors are extended. We
estimate that the epidemic would have continued to grow ($R_t \geq 1$) even with the extended
localized lockdowns. The epidemic kept growing until Greater Santiago was put under
lockdown.

300