

**Risk factors for the development of hepatocellular carcinoma (HCC)
in chronic hepatitis B virus (HBV) infection:
a systematic review and meta-analysis**

Cori Campbell, MSc¹

Tingyan Wang, PhD¹

Anna McNaughton, PhD¹

Eleanor Barnes¹

Philippa C Matthews, FRCP, FRCPATH, DPhil, ^{1,2,3*}

¹Nuffield Department of Medicine, University of Oxford, Medawar Building, South Parks Road, Oxford, OX1 3SY, UK

² Department of Infectious Diseases and Microbiology, Oxford University Hospitals NHS Foundation Trust, John Radcliffe Hospital, Headley Way, Oxford OX3 9DU, UK

³ NIHR BRC, John Radcliffe Hospital, Headley Way, Oxford OX3 9DU, UK

***Corresponding author;** email: philippa.matthews@ndm.ox.ac.uk

Acknowledgements: CC acknowledges doctoral funding from GlaxoSmithKline.

ABSTRACT:

Background: Hepatocellular carcinoma (HCC) is one of the leading contributors to cancer mortality worldwide and is the largest cause of death in individuals with chronic hepatitis B virus (HBV) infection. It is not certain how the presence of other metabolic factors and comorbidities influences HCC risk in HBV. Therefore we performed a systematic review and meta-analysis to seek evidence for significant associations.

Methods: MEDLINE, Embase and Web of Science databases were searched from 1st January 2000 to 24th June 2020 for English studies investigating associations of metabolic factors and comorbidities with HCC risk in individuals with chronic HBV infection. We extracted data for meta-analysis and report pooled effect estimates from a fixed-effects model. Pooled estimates from a random-effects model were also generated if significant heterogeneity was present.

Results: We identified 40 observational studies reporting on associations of diabetes mellitus, hypertension, dyslipidaemia and obesity with HCC risk. Meta-analysis was possible for only diabetes mellitus due to the limited number of studies. Diabetes mellitus was associated with >25% increase in hazards of HCC (fixed effects Hazards Ratio [HR] 1.26, 95% CI 1.20-1.32, random effects HR 1.36, 95% CI 1.23-1.49). This association was attenuated towards the null in sensitivity analysis restricted to studies adjusted for metformin use.

Conclusions: In adults with chronic HBV infection, diabetes mellitus is a significant risk factor for HCC, but further investigation of how antidiabetic drug use and glycaemic control influence this association is needed. Enhanced screening of individuals with HBV and diabetes may be warranted.

Key words: HBV, hepatitis B virus, HCC, hepatocellular carcinoma, comorbidities.

Introduction

Hepatitis B virus (HBV) is a hepatotropic virus responsible for substantial morbidity and mortality worldwide. Infection can be acute or chronic, with most of the HBV disease burden attributable to chronic disease. The World Health Organisation (WHO) estimated a chronic HBV (CHB) global prevalence of 257 million for 2015, with 887,000 HBV-attributable deaths reported in the same year (1), making HBV the second highest viral cause of daily deaths (with first being the agent of the global COVID-19 pandemic, SARS-CoV-2) (2,3) of which the burden has increased in recent decades (4).

Most CHB deaths are due to primary liver cancer and cirrhosis; these conditions were responsible for over 40% of all viral hepatitis-attributable deaths. A GBD study on the global HCC burden reported a 42% increase in incident cases of HCC attributable to chronic infection between 1990 and 2015 (5), among which CHB infection was the largest contributor, responsible for more than 30% of incident cases in 2015 (5).

Multiple risk factors for HCC in CHB-infected individuals have been established, including sex, age, cirrhosis, and co-infection with human immunodeficiency virus (HIV) or other hepatitis viruses (including hepatitis C and D). Previous studies have investigated associations of comorbidities, such as diabetes mellitus (DM) (8–11) and hypertension (12,13), with risk of HCC in the general population, and The European Association for the Study of the Liver (EASL) recognises DM as a risk factor for HCC in CHB (7). As the global prevalence of comorbidities such as DM (14), renal disease (15), hypertension (16) and coronary heart disease (CHD) (17) continues to rise, these conditions are increasingly relevant to the development of HCC.

Various risk scores have been developed to predict HCC risk: the PAGE-B risk score was developed to predict HCC risk in Caucasian patients on antiviral treatment (18), while the REACH-B (19,20), GAG-HCC (21,22) and CU-HCC (21,23–25) risk scores apply to in untreated Asian populations. Existing risk scores use age, sex and HBV DNA VL to predict risk. CU-HCC and GAG-HCC include parameters for cirrhosis, however no score accounts for comorbidities such as DM or hypertension. It is possible that risk prediction could be improved by accounting for these comorbid conditions.

Despite rises in the global prevalence of relevant comorbidities, evidence concerning associations of comorbidities with HCC risk in CHB is poor and heterogeneous. Neither EASL, American Association of the Study of Liver Disease (AASLD) (33) or Asian Pacific Association for the Study of the Liver (APASL) (32) guidelines for HBV management include recommendations for enhanced screening or DM management in CHB, despite recent clinical interest in the potential utility of metformin in preventing and treating various cancers (26,27). Furthermore, there are few studies investigating associations of other potentially relevant comorbidities (such as hypertension, CHD and renal disease) and their metabolic risk factors (such as obesity and dyslipidaemia) with HCC risk. Therefore, we undertook a systematic review, aiming to summarise and critically appraise studies investigating associations of relevant comorbidities and metabolic factors with risk of HCC in CHB-infected individuals.

Methods

Search strategy and selection criteria

In June 2020 we systematically searched three databases (Web of Science, Embase and MEDLINE) in accordance with PRISMA guidelines (28); search terms are listed in Table S1. We searched all databases from 1st January 2000 until 24th June 2020, without application of any restrictions for study design applied to search terms or results, but including only full-text human studies published in English.

We combined and deduplicated search results from the three databases, prior to screening for eligibility. We excluded articles not investigating associations of comorbidities with risk of HCC and/or not restricted to CHB-infected participants. We also searched reference lists of relevant systematic reviews/meta-analyses and studies identified for inclusion to identify additional studies for inclusion. Search terms were constructed and agreed on by three authors (PM, TW and CC) and articles were screened and selected by one author (CC).

2.2 Data extraction and statistical analysis

One author (CC) extracted the following summary characteristics from included studies: country, publication year, study design, follow-up period, comorbidities

investigated, number of participants, number of HCC cases, sex, age at baseline, risk ratio and covariates adjusted for.

We carried out meta-analysis in R (version 3.5.1) using the “meta” package (version 4.12-0) (29), including only hazard ratios (HRs) minimally adjusting for age and sex. We calculated pooled summary effect estimates using the inverse-variance weighting of HRs on the natural logarithmic scale, and quantified between-study heterogeneity using the I^2 statistic; significance of heterogeneity was investigated using Cochran’s Q test (p threshold=0.05). Where I^2 was >0 and heterogeneity was significant, we present both fixed- and random-effects summary estimates. We undertook multiple sensitivity analyses whereby analyses were restricted to studies adjusting for various additional confounders and for DM treatment, and stratified by DM type, in order to investigate robustness of observed associations.

Definitions

For diabetes, we considered diagnoses of type 1 and type 2 diabetes, as well as unspecified diabetes mellitus, for pooling the effect, followed by further stratification by subtypes of diabetes if enough studies were eligible. Hypertension (HT), was defined by either a diagnosis of HT recorded as part of the medical history or current health assessment, or a measurement with mean arterial pressure (MAP) above a specified threshold. Obesity was based on BMI values, by referring the cut-off in the included studies, where 25, 27, 30 kg/m² were the common threshold values used. CVD was defined broadly as an umbrella term including any of the following disease subtypes: ischaemic heart disease (IHD)/coronary heart disease(CHD), cerebrovascular disease. Dyslipidaemia was defined according to serum lipid concentrations above a certain threshold (thresholds may vary depending on healthcare setting).

Quality appraisal

We used the Newcastle-Ottawa Scale (NOS) to assess the quality of non-randomised studies, including cohort and case-control studies (30), judging studies based on points awarded for selection of study groups, comparability of groups, and

exposure/outcome ascertainment. Studies with scores of <5, 5-7 and >7 points were considered to be of low, sufficient and high quality, respectively.

Results

Study characteristics

In total our search identified 1,814 articles (899 from MEDLINE, 407 from Embase and 508 from Web of Science) (Figure 1). After deduplication, we screened 1,136 individual articles by title/abstract, from which 140 full texts were identified for full-text assessment. After exclusion of ineligible articles and reference list searching of relevant articles, we identified 40 articles for inclusion in this review. Summary characteristics of included studies are reported in Table S2.

All studies were observational in design, with 33 cohort and 7 case-control studies included (Table S2). Thirty-two studies were conducted in Asian countries. Four studies were restricted to male cohorts and 36 were undertaken in mixed-sex cohorts. All studies recruited participants from health centres, healthcare or prescription databases, or pre-existing cohorts or cancer screening programmes. All studies were undertaken in adults, with mean/median ages of cohorts ranging between 40 and 65 years in 33 studies. Thirty-three studies investigated DM/insulin resistance/fasting serum glucose, 11 studies investigated blood hypertension/blood pressure, 7 investigated dyslipidaemia, 5 investigated obesity and cardiovascular disease. Less than 5 studies investigated other factors including renal disease, statin use and use of antidiabetic drugs.

In the 40 studies including 536,456 adults, >30,500 HCC events occurred (we are unable to report an exact number, because one study did not report a precise number of HCC cases (31)). Sample sizes of cohort studies varied widely, ranging from 102 to 214,167 (median 3,090), with corresponding numbers of HCC cases ranged from 7 (arising among 102 participants) to 11,241 (arising among 214,167 participants). Case-control sample sizes ranged from 182 to 6,275 (median 1,122) with corresponding numbers of HCC cases ranged from 73 (out of 182 participants) and 1105 (out of 6,275 participants).

Quality assessment

Among 40 studies, 39 had quality scores ≥ 5 (Tables S3 and S4). All cohort studies were of sufficient quality with 13 of these being scored as high-quality. Six case-control studies were of sufficient quality and one of poor quality. Inclusion criteria varied widely and therefore study populations were heterogeneous. In most studies, exposures and outcomes were ascertained using health assessment, imaging or record linkage. Twenty-three cohort studies and 7 case-control studies accounted for age and sex. HCC typically arise after long durations of infection, and therefore prolonged follow up allows for detection of more HCC events; among 23 cohort studies identified, only 5 cohort studies had lengths of follow-up ≥ 10 years).

Association of diabetes mellitus with HCC risk

Thirty-six studies investigated the association of DM with risk of CHB progression to HCC, comprising 7 case-control studies (Table 1a) and 29 cohort studies (Table 1b). Four studies were restricted to males and the others included both sexes (Table S2). Mean ages at baseline in all studies were ≥ 40 years, respectively. Study populations were heterogeneous with variable inclusion criteria, and definitions of DM were not consistent between studies. Four case-control and four cohort studies investigated type 2 DM/insulin resistance, three case-control and seven cohort studies investigated unspecified DM, and one case-control and three cohort studies investigated both type 1 and 2 DM as a composite potential risk factor.

Of the 7 case-control studies that reported effect estimates, there was directional inconsistency between effect estimates reported in case-control studies, with 4 studies reporting an increased risk of HCC in those with DM as compared to those without, 3 studies reporting a decreased risk of HCC in those with DM, and one study failing to provide an effect estimate. Risk ratios (RRs) >1 ranged from 1.35 to 2.04, and all were statistically significant. RRs <1 ranged from 0.19 to 0.80, of which two were statistically significant. Among 28 cohort studies providing effect estimates (27 HRs and 1 OR), there was directional consistency with 27 of the reported RRs >1 . Effect sizes >1 ranged from 1.05 to 6.80, with 15 RRs being statistically significant. The single RR that was <1 was nonsignificant.

Minimal adjustment for confounders differed between case-control and cohort studies. Most case-control studies adjusted for age, sex, HCV coinfection, HIV coinfection and cirrhosis. Twenty cohort studies minimally adjusted for age and sex. Of these, 15 adjusted for HCV coinfection, 13 for cirrhosis, 12 for antiviral treatment, 10 for HIV coinfection, 9 for alcohol consumption, 7 each for HBV viral DNA load and cigarette smoking and 6 for other liver disease (including alcoholic liver disease). Eight studies excluded participants who developed HCC within the first 3 to 12 months of follow-up in their main analyses. One study did so in sensitivity analysis and found this did not modify associations observed.

Meta-analysis of cohort studies

DM was associated with an increased risk of progression to HCC by meta-analysis restricted to HRs minimally adjusted for age and sex (Figure 2). As there was significant heterogeneity ($I^2=49%$, $p<0.01$), results from both fixed- and random-effects analyses are presented. In random-effects analysis risk of HCC was 36% (summary RR 1.36; 95% CI 1.23-1.49) significantly higher in DM compared to non-DM.

Subgroup and sensitivity analyses

We performed sensitivity analyses in order to investigate the robustness of pooled estimates to additional adjustment for HCV or HIV coinfection, cirrhosis, and DM treatment. After restricting meta-analysis to 16 studies adjusting for HCV coinfection in addition to age and sex (Figure S1), pooled HRs did not change materially. Considering 8 studies adjusting for HIV and antiviral treatment (Figure S2), pooled HR from the fixed-effects analysis was attenuated towards the null slightly but still remained significant. To investigate the robustness of the association of DM with HCC to adjustment for cirrhosis, a potential mediator, we restricted meta-analysis to studies adjusting for cirrhosis (Figure S3). This did not change pooled HRs materially.

To investigate heterogeneity between type 2 DM and unspecified DM, sensitivity analysis was performed whereby studies were stratified by DM type. Amongst studies investigating type 2 DM, heterogeneity was 33% ($p=0.18$) (Figure S4). However the HR did not differ materially to that observed in the primary meta-analysis.

The association of DM with HCC risk was attenuated towards the null in studies that adjusted for metformin use, with risk of HCC 16% higher in DM participants as compared to non-DM (random effects HR 1.16, 95% CI 1.04-1.29) in analysis restricted to studies adjusting for metformin use (Figure S5). After restricting to studies adjusting to DM treatment, pooled HRs remained statistically significant.

Association of hypertension with hepatocellular carcinoma risk

Eleven studies investigated the association of HT with risk of CHB progression to HCC, one case-control study and 10 cohort studies (Table 2). All studies were mixed-sex samples in which mean/median age at baseline was ≥ 40 years (Table S2). Definitions of HT were heterogeneous; most studies ascertained hypertension via record linkage, but others used health assessment or interview. Few studies defined clinical thresholds for hypertension classification. “Higher” MAP was the primary exposure of interest in the case-control study, for which a threshold was not defined.

Among 10 studies reporting hazards of HCC associated with HT, only three identified significantly increased risks, with two unadjusted and one adjusted for age. Another five studies reported an effect in the same direction, but effect sizes were not statistically significant. Adjusted HRs >1 ranged from 1.19 to 1.70 and <1 from 0.04 to 0.96. Adjustment for confounders was poor, with only four HRs minimally adjusted for age and sex.

Associations of other comorbidities with hepatocellular carcinoma risk

Seven studies investigated the association of dyslipidaemia with HCC risk in CHB patients (Table 3). All studies reported reduced risks of HCC in participants with dyslipidaemia as compared to those without, however only one HR was statistically significant. Clinical definitions of dyslipidaemia were often not reported, and only four studies minimally adjusted for age and sex. Six studies investigated the association of obesity with HCC risk. Clinical definitions of obesity varied greatly, and out of four studies reporting increased risks of HCC with obesity, only one HR was statistically significant.

Three studies investigated the association of statin use with HCC risk in CHB. All studies reported HRs <1, and two of these HRs were statistically significant. HRs reported in 5 studies for HCC risk associated with CVD varied, likely due to the variable definitions of CVD used across studies. Associations for other variables, including respiratory disease and renal disease, were reported by <2 studies each.

Discussion

Our meta-analysis suggests that DM is a risk factor for HCC in CHB infected individuals, with hazards of HCC >20% higher in the presence of DM; however, we report significant between-study heterogeneity. This association did not materially change after restriction to studies adjusting for relevant confounders, but did suggest a favourable impact of DM treatment with metformin. Pooled effect estimates remained significant in sensitivity analyses. Few studies investigated other comorbidities, and some comorbidity search terms included in our systematic literature search returned few or no results. This highlights the need for future investigation of these comorbidities, as antiviral treatment cannot eliminate the risk of HCC entirely and therefore novel risk factors must be identified in order to inform interventions. Although EASL (7) and APASL (32) guidelines recognise this association, it is not currently consistently described in other recommendations (e.g. AASLD guidelines (33) do not list DM as a risk factor for HCC).

Some studies investigating comorbidities and their metabolic risk factors reported significantly reduced hazards of participants with these conditions as compared to those without. This association may be confounded by the requirement for treatment in secondary care, whereby CHB-infected individuals may be more likely to receive screening and antiviral treatment.

Findings from case-control and cohort studies were not consistent; whilst the majority of cohort studies reported increased risks of HCC associated with DM, case-control findings were inconsistent, and indeed three studies reported a significant reduction of HCC risks in association with DM. Explanations for such findings including

confounding, selection bias associated with the study of hospital control groups that enrich for DM (34,35), and chance, especially in small studies (34–37).

Our findings are consistent with a previous meta-analysis (38); we provide a comprehensive review of all cohort studies and include a larger number of studies. We restricted to studies reporting HRs minimally adjusted for age and sex. However, adjustment for covariates and inclusion criteria varied considerably between studies, and this may explain some of the between-study heterogeneity. Substantial heterogeneity remained in sensitivity analyses restricted to studies adjusting for additional key confounders, as adjustment for confounders was variable within these studies and populations may not have been comparable. Although baseline age and sex characteristics were comparable across studies, there was variability regarding exclusion of those with additional comorbidities and those on antiviral treatment.

We noted variable definitions of DM, with some studies restricting investigation to type 2 DM whereas others included participants with unspecified DM. Risk factors for types 1 and 2 diabetes mellitus vary, and heterogeneity in DM definitions could therefore contribute to variable study populations and outcomes. Global prevalence and incidence estimates for specific DM types do not exist, as distinguishing between types often requires expensive laboratory resources that are not available in many settings. However most cases of type 1 diabetes are found in Europe and North America, and the large majority of studies included in this systematic review and meta-analysis were conducted in Asian countries (39).

It is possible that varied lengths of follow-up also contributed to between-study heterogeneity, although HRs did not significantly vary with length of follow-up in sensitivity analysis. This is because cancer is a chronic disease with a slow development, and preclinical disease can be present for many years before clinical manifestation; follow-up times <10 years may be insufficient to detect HCC outcomes. We were unable to provide effect estimates across most potential patient subgroups because the subgroups contained small numbers of studies, putting subgroup analyses at greater risk of chance findings as well as being subject to the influence of multiple testing.

The association we report in this meta-analysis is weaker than those observed in patients with chronic HCV infection. In previous studies of individuals with chronic HCV infection, risk of HCC was elevated ~2-fold in the presence of DM (40,41). Previous studies also report increased risks of DM in HCV-infected individuals as compared to non-infected individuals (76–79). However, this is likely due to the various extra-hepatic manifestations of HCV which are not present in HBV infection.

In sensitivity analysis restricted to studies adjusting for cirrhosis, the observed association of DM with HCC was attenuated towards the null. This may be explained by a confounding of the association by cirrhosis, accounted for by an independent association of cirrhosis with both DM and HCC, and the absence of cirrhosis from the causal pathway that associates DM with HCC. However, if cirrhosis is located along this causal pathway, then it can be characterised as a mediator rather than a confounder. If cirrhosis is a mediator then adjusting for it would be incorrect.

Past studies support a positive association of DM with HCC risk in non-CHB patients (42–44), and aetiological investigation has suggested that DM can lead to cirrhosis and thereby HCC via fatty liver disease (45), as a result of accumulation of fatty acids causing oxidative stress driving inflammation and tissue necrosis (46,47), and longer-term fibrosis and cirrhosis, thereby increasing HCC risk. However alternative pathways causally associating DM with HCC have been suggested, including increased hepatocyte proliferation induced by hyperinsulinaemia (48,49) and production of pro-inflammatory cytokines that increase cell survival via apoptosis inhibition (50–52). It is possible that multiple disease pathways associating DM with HCC operate simultaneously. Elucidation of the aetiological mechanisms underpinning this association will inform future epidemiological studies and disease management. Characterising the impact of glycaemic control on HCC risk is also an important question for future research.

Three studies adjusted for metformin use (53–55), and in sensitivity analysis restricted to these studies, the association between DM and HCC remained significant but was attenuated towards the null. It is not known the extent to which this is a result of glucoregulation by metformin, accomplished by inhibition of hepatic gluconeogenesis and improvement of insulin sensitivity in tissues leading to reduced oxidative stress in

the liver (56), and/or a direct impact of metformin in reducing cancer risk via regulation of cellular signalling. Evidence from observational studies (57–59) and randomised controlled trials (RCTs) (60) supports a protective effect of metformin against the development and progression of cancer in diabetic individuals. There is also some RCT evidence for protective effects of metformin against progression of certain cancer types in non-diabetic individuals (61) although this is not consistent. Multiple large-scale phase III RCTs are currently underway (62–65) and will provide further information regarding the roles of DM and metformin in cancer development.

We included all studies investigating the association of comorbidities with risk of CHB progression to HCC that minimally adjusted for age and sex in order to provide a comprehensive review of available evidence. However, few studies investigated non-DM comorbidities, preventing meta-analysis for these comorbidities. Additionally we were unable to restrict our meta-analysis of DM and HCC to studies adjusting for confounders other than age and sex, as few studies minimally adjusted for all relevant factors. Publication bias may influence the outcome, as we restricted our search to peer-reviewed literature, and studies that do not report an association of DM with HCC may be less likely to be published. Our results may not be generalisable to the global CHB population, as there were a limited number of studies from non-Asian countries. The lack of studies from any African countries is of concern, given that the region carries both the highest HBV prevalence (3) and largest mortality burdens for cirrhosis and HCC (66,67).

Our finding that DM is a risk factor for HCC in CHB-infected individuals suggests that enhanced cancer surveillance may be justified in patients with CHB and DM to enable early detection and treatment. Improvements in guidelines could help to inform more consistent approaches to risk reduction. After adjustment for metformin use, this association remained significant, but was attenuated suggesting a potential benefit of metformin that warrants further study. Ongoing investigation is required in order to identify and characterise risk factors for HCC, to extend these analyses to diverse global populations, and to elucidate disease mechanisms in order to inform prevention, screening and therapeutic intervention.

References:

1. Hepatitis B Fact Sheet [Internet]. 2019 [cited 2019 Dec 18]. Available from: <https://www.who.int/news-room/fact-sheets/detail/hepatitis-b>
2. Coronavirus disease (COVID-19) Situation Report-161.
3. Global hepatitis report [Internet]. Geneva; 2017 [cited 2020 Jul 6]. Available from: <https://apps.who.int/iris/bitstream/handle/10665/255016/9789241565455-eng.pdf>
4. Stanaway JD, Flaxman AD, Naghavi M, Fitzmaurice C, Vos T, Abubakar I, et al. The global burden of viral hepatitis from 1990 to 2013: findings from the Global Burden of Disease Study 2013. *Lancet*. 2016 Sep 10;388(10049):1081–8.
5. Fitzmaurice C, Akinyemiju T, Abera S, Ahmed M, Alam N, Alemayohu MA, et al. The burden of primary liver cancer and underlying etiologies from 1990 to 2015 at the global, regional, and national level results from the global burden of disease study 2015. *JAMA Oncol*. 2017 Dec 1;3(12):1683–91.
6. Varbobitis I, Papatheodoridis G V. The assessment of hepatocellular carcinoma risk in patients with chronic hepatitis B under antiviral therapy. Vol. 22, *Clinical and molecular hepatology*. Korean Association for the Study of the Liver; 2016. p. 319–26.
7. EASL. European Association for the Study of the Liver (EASL) 2017 Clinical Practice Guidelines on the management of hepatitis B virus infection. *J Hepatol* [Internet]. 2017 [cited 2019 Oct 23];67(2):370–98. Available from: <http://www.ncbi.nlm.nih.gov/pubmed/28427875><http://linkinghub.elsevier.com/retrieve/pii/S016882781730185X>
8. Simon TG, King LY, Chong DQ, Nguyen LH, Ma Y, VoPham T, et al. Diabetes, metabolic comorbidities, and risk of hepatocellular carcinoma: Results from two prospective cohort studies. *Hepatology* [Internet]. 2018 May 1 [cited 2020 Feb 24];67(5):1797–806. Available from: <http://www.ncbi.nlm.nih.gov/pubmed/29152763>
9. Yang WS, Va P, Bray F, Gao S, Gao J, Li HL, et al. The role of pre-existing diabetes mellitus on hepatocellular carcinoma occurrence and prognosis: A meta-analysis of prospective cohort studies. *PLoS One* [Internet]. 2011 Dec 21 [cited 2020 Feb 24];6(12):e27326. Available from: <http://www.ncbi.nlm.nih.gov/pubmed/22205924>

10. Hassan MM, Curley SA, Li D, Kaseb A, Davila M, Abdalla EK, et al. Association of diabetes duration and diabetes treatment with the risk of hepatocellular carcinoma. *Cancer* [Internet]. 2010 Apr 15 [cited 2020 Feb 24];116(8):1938–46. Available from: <http://doi.wiley.com/10.1002/cncr.24982>
11. Davila JA, Morgan RO, Shaib Y, McGlynn KA, El-Serag HB. Diabetes increases the risk of hepatocellular carcinoma in the United States: A population based case control study. *Gut*. 2005 Apr 1;54(4):533–9.
12. Turati F, Talamini R, Pelucchi C, Polesel J, Franceschi S, Crispo A, et al. Metabolic syndrome and hepatocellular carcinoma risk. *Br J Cancer*. 2013 Jan 15;108(1):222–8.
13. Borena W, Strohmaier S, Lukanova A, Bjørge T, Lindkvist B, Hallmans G, et al. Metabolic risk factors and primary liver cancer in a prospective study of 578,700 adults. *Int J Cancer* [Internet]. 2012 Jul 1 [cited 2020 Feb 24];131(1):193–200. Available from: <http://doi.wiley.com/10.1002/ijc.26338>
14. Global Report on Diabetes [Internet]. Geneva; 2016 [cited 2020 Feb 24]. Available from: http://www.who.int/about/licensing/copyright_form/index.html
15. GBD Chronic Kidney Disease Collaboration. Global, regional, and national burden of chronic kidney disease, 1990-2017: a systematic analysis for the Global Burden of Disease Study 2017. *Lancet (London, England)* [Internet]. 2020 Feb 13 [cited 2020 Feb 24];0(0). Available from: <http://www.ncbi.nlm.nih.gov/pubmed/32061315>
16. Forouzanfar MH, Liu P, Roth GA, Ng M, Biryukov S, Marczak L, et al. Global burden of hypertension and systolic blood pressure of at least 110 to 115mmHg, 1990-2015. *JAMA - J Am Med Assoc*. 2017 Jan 10;317(2):165–82.
17. Bansilal S, Castellano JM, Fuster V. Global burden of CVD: Focus on secondary prevention of cardiovascular disease. *Int J Cardiol*. 2015 Dec 1;201:S1–7.
18. Papatheodoridis G, Dalekos G, Sypsa V, Yurdaydin C, Buti M, Goulis J, et al. PAGE-B predicts the risk of developing hepatocellular carcinoma in Caucasians with chronic hepatitis B on 5-year antiviral therapy. *J Hepatol*. 2016 Apr 1;64(4):800–6.
19. Lee MH, Yang HI, Liu J, Batrla-Utermann R, Jen CL, Iloeje UH, et al. Prediction models of long-term Cirrhosis and hepatocellular carcinoma risk in chronic hepatitis B patients: Risk scores integrating host and virus profiles.

- Hepatology. 2013 Aug;58(2):546–54.
20. Yang HI, Yuen MF, Chan HLY, Han KH, Chen PJ, Kim DY, et al. Risk estimation for hepatocellular carcinoma in chronic hepatitis B (REACH-B): Development and validation of a predictive score. *Lancet Oncol.* 2011;12(6):568–74.
 21. Wong GLH, Wong VWS. Risk prediction of hepatitis B virus-related hepatocellular carcinoma in the era of antiviral therapy. *World J Gastroenterol.* 2013 Oct 21;19(39):6515–22.
 22. Yuen MF, Tanaka Y, Fong DYT, Fung J, Wong DKH, Yuen JCH, et al. Independent risk factors and predictive score for the development of hepatocellular carcinoma in chronic hepatitis B. *J Hepatol.* 2009 Jan;50(1):80–8.
 23. Chan HLY, Hui AY, Wong ML, Tse AML, Hung LCT, Wong VWS, et al. Genotype C hepatitis B virus infection is associated with an increased risk of hepatocellular carcinoma. *Gut.* 2004 Oct;53(10):1494–8.
 24. Chan HLY, Tse CH, Mo F, Koh J, Wong VWS, Wong GLH, et al. High viral load and hepatitis B virus subgenotype Ce are associated with increased risk of hepatocellular carcinoma. *J Clin Oncol.* 2008 Jan 10;26(2):177–82.
 25. Wong VWS, Chan SL, Mo F, Chan TC, Loong HHF, Wong GLH, et al. Clinical scoring system to predict hepatocellular carcinoma in chronic hepatitis B carriers. *J Clin Oncol.* 2010 Apr 1;28(10):1660–5.
 26. Saraei P, Asadi I, Kakar MA, Moradi-Kor N. The beneficial effects of metformin on cancer prevention and therapy: A comprehensive review of recent advances. *Cancer Manag Res.* 2019;11:3295–313.
 27. Chae YK, Arya A, Malecek MK, Shin DS, Carneiro B, Chandra S, et al. Repurposing metformin for cancer treatment: Current clinical studies. *Oncotarget.* 2016;7(26):40767–80.
 28. Liberati A, Altman DG, Tetzlaff J, Mulrow C, Gøtzsche PC, Ioannidis JPA, et al. The PRISMA statement for reporting systematic reviews and meta-analyses of studies that evaluate healthcare interventions: explanation and elaboration. *BMJ.* 2009 Jul 21;339.
 29. Balduzzi S, Rucker G, Schwarzer G. How to perform a meta-analysis with R: A practical tutorial. *Evid Based Ment Health.* 2019 Nov 1;22(4):153–60.
 30. Wells G, Shea B, O’Connell D, et al. The Newcastle-Ottawa Scale (NOS) for

- assessing the quality of nonrandomised studies in meta-analyses [Internet].
[cited 2020 Jun 17]. Available from:
http://www.ohri.ca/programs/clinical_epidemiology/oxford.asp
31. Ferreira G, Stuurman AL, Horsmans Y, Cattaert T, Verstraeten T, Feng Y, et al. Hepatitis B virus infection and the risk of liver disease progression in type 2 diabetic patients with potential nonalcoholic fatty liver disease. *Eur J Gastroenterol Hepatol* [Internet]. 2020 Jan 1 [cited 2020 Jun 30];32(1):101–9. Available from: <http://journals.lww.com/00042737-202001000-00017>
 32. Sarin SK, Kumar • M, Lau • G K, Abbas • Z, Chan • H L Y, Chen • C J, et al. Asian-Pacific clinical practice guidelines on the management of hepatitis B: a 2015 update. *Hepatol Int*. 2017;10:1–98.
 33. Terrault NA, Lok ASF, McMahon BJ, Chang K-M, Hwang JP, Jonas MM, et al. Update on Prevention, Diagnosis, and Treatment of Chronic Hepatitis B: AASLD 2018 Hepatitis B Guidance A HE STUDY OF LIVER D I S E ASES T MERICAN ASSOCIATION FOR. *Pract Guid | Hepatol*. 2018;67(4).
 34. Li Q, Li W-W, Yang X, Fan W-B, Yu J-H, Xie S-S, et al. Type 2 diabetes and hepatocellular carcinoma: A case-control study in patients with chronic hepatitis B. *Int J Cancer* [Internet]. 2012 Sep 1 [cited 2020 Feb 6];131(5):1197–202. Available from: <http://doi.wiley.com/10.1002/ijc.27337>
 35. Gao C, Fang L, Zhao HC, Li JT, Yao SK. Potential role of diabetes mellitus in the progression of cirrhosis to hepatocellular carcinoma: A cross-sectional case-control study from Chinese patients with HBV infection. *Hepatobiliary Pancreat Dis Int*. 2013;12(4):385–93.
 36. Kennedy K, Graham SM, Arora N, Shuhart MC, Kim HN. Hepatocellular carcinoma among US and non- US-born patients with chronic hepatitis B: Risk factors and age at diagnosis. *PLoS One*. 2018 Sep 1;13(9).
 37. Chao LT, Wu CF, Sung FY, Lin CL, Liu CJ, Huang CJ, et al. Insulin, glucose and hepatocellular carcinoma risk in male hepatitis B carriers: Results from 17-year follow-up of a population-based cohort. *Carcinogenesis* [Internet]. 2011 Jun [cited 2020 Feb 7];32(6):876–81. Available from: <http://www.ncbi.nlm.nih.gov/pubmed/21464041>
 38. Tan Y, Wei S, Zhang W, Yang J, Yang J, Yan L. Type 2 diabetes mellitus increases the risk of hepatocellular carcinoma in subjects with chronic hepatitis B virus infection: A meta-analysis and systematic review. Vol. 11, *Cancer*

- Management and Research. Dove Medical Press Ltd; 2019. p. 705–13.
39. World Health Organisation. Global report on diabetes. [Internet]. Geneva; 2016 [cited 2020 Jun 4]. Available from:
http://www.who.int/about/licensing/copyright_form/index.html
 40. Lai SW, Chen PC, Liao KF, Muo CH, Lin CC, Sung FC. Risk of hepatocellular carcinoma in diabetic patients and risk reduction associated with anti-diabetic therapy: A population-based cohort study. *Am J Gastroenterol*. 2012 Jan;107(1):46–52.
 41. Veldt BJ, Chen W, Heathcote EJ, Wedemeyer H, Reichen J, Hofmann WP, et al. Increased risk of hepatocellular carcinoma among patients with hepatitis C cirrhosis and diabetes mellitus. *Hepatology*. 2008 Jun;47(6):1856–62.
 42. Donadon V, Balbi M, Mas MD, Casarin P, Zanette G. Metformin and reduced risk of hepatocellular carcinoma in diabetic patients with chronic liver disease. *Liver Int* [Internet]. 2010 May 1 [cited 2020 Jul 6];30(5):750–8. Available from:
<https://onlinelibrary.wiley.com/doi/full/10.1111/j.1478-3231.2010.02223.x>
 43. Hassan MM, Curley SA, Li D, Kaseb A, Davila M, Abdalla EK, et al. Association of diabetes duration and diabetes treatment with the risk of hepatocellular carcinoma. *Cancer* [Internet]. 2010 Apr 15 [cited 2020 Jul 6];116(8):1938–46. Available from:
<https://acsjournals.onlinelibrary.wiley.com/doi/full/10.1002/cncr.24982>
 44. Davila JA, Morgan RO, Shaib Y, McGlynn KA, El-Serag HB. Diabetes increases the risk of hepatocellular carcinoma in the United States: A population based case control study. *Gut* [Internet]. 2005 Apr 1 [cited 2020 Jul 6];54(4):533–9. Available from: www.gutjnl.com
 45. Mantovani A, Targher G. Type 2 diabetes mellitus and risk of hepatocellular carcinoma: Spotlight on nonalcoholic fatty liver disease [Internet]. Vol. 5, *Annals of Translational Medicine*. AME Publishing Company; 2017 [cited 2020 Jul 6]. Available from: [/pmc/articles/PMC5515814/?report=abstract](http://pmc/articles/PMC5515814/?report=abstract)
 46. Di Bisceglie AM. What Every Hepatologist Should Know about Endocrinology: Obesity, Diabetes, and Liver Disease. Vol. 126, *Gastroenterology*. W.B. Saunders; 2004. p. 604–6.
 47. Garcia-Compean D, Jacquez-Quintana JO, Gonzalez-Gonzalez JA, Maldonado-Garza H. Liver cirrhosis and diabetes: Risk factors, pathophysiology, clinical implications and management. Vol. 15, *World Journal*

- of Gastroenterology. Baishideng Publishing Group Inc; 2009. p. 280–8.
48. Moore MA, Park CB, Tsuda H. Implications of the Hyperinsulinaemia-Diabetes-Cancer Link for Preventive Efforts - PubMed. *Eur J Cancer Prev* [Internet]. 1998 Apr [cited 2020 Jun 5];7(2):89–107. Available from: <https://pubmed.ncbi.nlm.nih.gov/9818771/>
 49. Calle EE, Kaaks R. Overweight, obesity and cancer: Epidemiological evidence and proposed mechanisms. Vol. 4, *Nature Reviews Cancer*. Nature Publishing Group; 2004. p. 579–91.
 50. Garg SK, Maurer H, Reed K, Selagamsetty R. Diabetes and cancer: Two diseases with obesity as a common risk factor. Vol. 16, *Diabetes, Obesity and Metabolism*. Blackwell Publishing Ltd; 2014. p. 97–110.
 51. Park EJ, Lee JH, Yu GY, He G, Ali SR, Holzer RG, et al. Dietary and Genetic Obesity Promote Liver Inflammation and Tumorigenesis by Enhancing IL-6 and TNF Expression. *Cell*. 2010 Jan 22;140(2):197–208.
 52. Ali Kamkar MM, Ahmad R, Alsmadi O, Behbehani K. Insight into the impact of diabetes mellitus on the increased risk of hepatocellular carcinoma: Mini-review. Vol. 13, *Journal of Diabetes and Metabolic Disorders*. BioMed Central Ltd.; 2014. p. 57.
 53. Hsu YC, Ho HJ, Lee TY, Huang YT, Wu MS, Lin JT, et al. Temporal trend and risk determinants of hepatocellular carcinoma in chronic hepatitis B patients on entecavir or tenofovir. *J Viral Hepat*. 2018 May 1;25(5):543–51.
 54. Kim K, Choi S, Park SM. Association of fasting serum glucose level and type 2 diabetes with hepatocellular carcinoma in men with chronic hepatitis B infection: A large cohort study. *Eur J Cancer*. 2018 Oct 1;102:103–13.
 55. Wu CY, Lin JT, Ho HJ, Su CW, Lee TY, Wang SY, et al. Association of nucleos(T)ide analogue therapy with reduced risk of hepatocellular carcinoma in patients with chronic hepatitis B - A nationwide cohort study. *Gastroenterology*. 2014;147(1).
 56. Foretz M, Guigas B, Viollet B. Understanding the glucoregulatory mechanisms of metformin in type 2 diabetes mellitus. Vol. 15, *Nature Reviews Endocrinology*. Nature Publishing Group; 2019. p. 569–89.
 57. He X, Esteva FJ, Ensor J, Hortobagyi GN, Lee M-H, Yeung S-CJ. Metformin and thiazolidinediones are associated with improved breast cancer-specific survival of diabetic women with HER2+ breast cancer. *Ann Oncol* [Internet].

- 2012 Jul [cited 2020 Jun 8];23(7):1771–80. Available from:
<https://www.ncbi.nlm.nih.gov/pmc/articles/PMC3387820/>
58. Lee JH, Kim T II, Jeon SM, Hong SP, Cheon JH, Kim WH. The effects of metformin on the survival of colorectal cancer patients with diabetes mellitus. Vol. 131, *International Journal of Cancer*. John Wiley & Sons, Ltd; 2012. p. 752–9.
 59. Evans JMM, Donnelly LA, Emslie-Smith AM, Alessi DR, Morris AD. Metformin and reduced risk of cancer in diabetic patients. *Br Med J*. 2005 Jun 4;330(7503):1304–5.
 60. Landman GWD, Kleefstra N, Van Hateren KJJ, Groenier KH, Gans ROB, Bilo HJG. Metformin associated with lower cancer mortality in type 2 diabetes: Zodiac-16. *Diabetes Care*. 2010 Feb;33(2):322–6.
 61. Higurashi T, Hosono K, Takahashi H, Komiya Y, Umezawa S, Sakai E, et al. Metformin for chemoprevention of metachronous colorectal adenoma or polyps in post-polypectomy patients without diabetes: a multicentre double-blind, placebo-controlled, randomised phase 3 trial. *Lancet Oncol*. 2016 Apr 1;17(4):475–83.
 62. Neoadjuvant Chemotherapy With or Without Metformin in Early Breast Cancer. - Full Text View - *ClinicalTrials.gov* [Internet]. [cited 2020 Jun 8]. Available from:
<https://www.clinicaltrials.gov/ct2/show/NCT04387630?term=metformin&recrs=abdf&type=Intr&cond=cancer&phase=23&draw=2&rank=5>
 63. The Metformin Active Surveillance Trial (MAST) Study - Full Text View - *ClinicalTrials.gov* [Internet]. [cited 2020 Jun 8]. Available from:
<https://www.clinicaltrials.gov/ct2/show/NCT01864096?term=metformin&recrs=abdf&type=Intr&cond=cancer&phase=23&draw=2&rank=6>
 64. A Phase III Randomized Trial of Metformin vs Placebo in Early Stage Breast Cancer - Full Text View - *ClinicalTrials.gov* [Internet]. [cited 2020 Jun 8]. Available from:
<https://www.clinicaltrials.gov/ct2/show/NCT01101438?term=metformin&recrs=abdf&type=Intr&cond=cancer&phase=23&draw=2&rank=3>
 65. U.S. National Library of Medicine. [Internet]. [cited 2020 Jun 8]. Available from:
<https://www.clinicaltrials.gov/ct2/home>
 66. Yang JD, Hainaut P, Gores GJ, Amadou A, Plymoth A, Roberts LR. A global

- view of hepatocellular carcinoma: trends, risk, prevention and management [Internet]. Vol. 16, Nature Reviews Gastroenterology and Hepatology. Nature Publishing Group; 2019 [cited 2020 Jul 6]. p. 589–604. Available from: <https://gco.iarc.fr/today/home>
67. Sepanlou SG, Safiri S, Bisignano C, Ikuta KS, Merat S, Saberifiroozi M, et al. The global, regional, and national burden of cirrhosis by cause in 195 countries and territories, 1990–2017: a systematic analysis for the Global Burden of Disease Study 2017. *Lancet Gastroenterol Hepatol* [Internet]. 2020 Mar 1 [cited 2020 Jul 6];5(3):245–66. Available from: <https://pubmed.ncbi.nlm.nih.gov/31981519/>
 68. Shyu Y, Huang T, Chien C, Yeh C, Lin C, Chien R. Diabetes poses a higher risk of hepatocellular carcinoma and mortality in patients with chronic hepatitis B: A population-based cohort study. *J Viral Hepat* [Internet]. 2019 Jun 5 [cited 2020 Feb 3];26(6):718–26. Available from: <https://onlinelibrary.wiley.com/doi/abs/10.1111/jvh.13077>
 69. Li X, Xu H, Gao P. Diabetes Mellitus is a Risk Factor for Hepatocellular Carcinoma in Patients with Chronic Hepatitis B Virus Infection in China. *Med Sci Monit*. 2018 Sep 24;24:6729–34.
 70. Han H, Deng H, Han T, Zhao H, Hou F, Qi X. Association between hepatocellular carcinoma and type 2 diabetes mellitus in chinese hepatitis b virus cirrhosis patients: A case-control study. *Med Sci Monit*. 2017 Jul 9;23:3324–34.
 71. Goh MJ, Sinn DH, Kim S, Woo SY, Cho H, Kang W, et al. Statin Use and the Risk of Hepatocellular Carcinoma in Patients With Chronic Hepatitis B. *Hepatology* [Internet]. 2020 Jun 14 [cited 2020 Jun 30];71(6):2023–32. Available from: <https://onlinelibrary.wiley.com/doi/abs/10.1002/hep.30973>
 72. Kim SU, Seo YS, Lee HA, Kim MN, Kim EH, Kim HY, et al. Validation of the CAMD Score in Patients With Chronic Hepatitis B Virus Infection Receiving Antiviral Therapy. *Clin Gastroenterol Hepatol*. 2020 Mar 1;18(3):693-699.e1.
 73. Lim CT, Goh GBB, Li H, Lim TK-H, Leow WQ, Wan WK, et al. Presence of Hepatic Steatosis Does Not Increase the Risk of Hepatocellular Carcinoma in Patients With Chronic Hepatitis B Over Long Follow-Up. *Microbiol Insights* [Internet]. 2020 Jan [cited 2020 Jul 1];13:117863612091887. Available from:

/pmc/articles/PMC7223198/?report=abstract

74. Yang HI, Yeh ML, Wong GL et al. Real-World Effectiveness From the Asia Pacific Rim Liver Consortium for HBV Risk Score for the Prediction of Hepatocellular Carcinoma in Chronic Hepatitis B Patients Treated With Oral Antiviral Therapy - PubMed. *J Infect Dis* [Internet]. 2020 [cited 2020 Jul 1];221(3):389–99. Available from: <https://pubmed.ncbi.nlm.nih.gov/31550363/>
75. Cho H, Chang Y, Lee JH, Cho YY, Nam JY, Lee Y Bin, et al. Radiologic Nonalcoholic Fatty Liver Disease Increases the Risk of Hepatocellular Carcinoma in Patients with Suppressed Chronic Hepatitis B. *J Clin Gastroenterol*. 2019;
76. Tan Y, Zhang X, Zhang W, Tang L, Yang H, Yan K, et al. The influence of metabolic syndrome on the risk of hepatocellular carcinoma in patients with chronic hepatitis B infection in mainland China. *Cancer Epidemiol Biomarkers Prev* [Internet]. 2019 Dec 1 [cited 2020 Jul 2];28(12):2038–46. Available from: <http://cebp.aacrjournals.org/>
77. Wang H-W, Lai H-C, Hu T-H, Su W-P, Lu S-N, Lin C-H, et al. Stratification of hepatocellular carcinoma risk through modified FIB-4 index in chronic hepatitis B patients on entecavir therapy. *J Gastroenterol Hepatol* [Internet]. 2019 Feb 1 [cited 2020 Jul 3];34(2):442–9. Available from: <http://doi.wiley.com/10.1111/jgh.14372>
78. Cheuk-Fung Yip T, Wai-Sun Wong V, Lik-Yuen Chan H, Tse YK, Pik-Shan Kong A, Long-Yan Lam K, et al. Effects of Diabetes and Glycemic Control on Risk of Hepatocellular Carcinoma After Seroclearance of Hepatitis B Surface Antigen. *Clin Gastroenterol Hepatol* [Internet]. 2018 May 1 [cited 2020 Jul 3];16(5):765-773.e2. Available from: <https://pubmed.ncbi.nlm.nih.gov/29246694/>
79. Hsu YC, Yip TCF, Ho HJ, Wong VWS, Huang YT, El-Serag HB, et al. Development of a scoring system to predict hepatocellular carcinoma in Asians on antivirals for chronic hepatitis B. *J Hepatol*. 2018 Aug 1;69(2):278–85.
80. Chan AWH, Wong GLH, Chan H-Y, Tong JHM, Yu Y-H, Choi PCL, et al. Concurrent fatty liver increases risk of hepatocellular carcinoma among patients with chronic hepatitis B. *J Gastroenterol Hepatol* [Internet]. 2017 Mar [cited 2020 Feb 4];32(3):667–76. Available from: <http://doi.wiley.com/10.1111/jgh.13536>

81. Chayanupatkul M, Omino R, Mittal S, Kramer JR, Richardson P, Thrift AP, et al. Hepatocellular carcinoma in the absence of cirrhosis in patients with chronic hepatitis B virus infection. *J Hepatol*. 2017 Feb 1;66(2):355–62.
82. Kim JH, Sinn DH, Gwak G-Y, Kang W, Paik Y-H, Choi MS, et al. Insulin resistance and the risk of hepatocellular carcinoma in chronic hepatitis B patients. *J Gastroenterol Hepatol* [Internet]. 2017 May [cited 2020 Feb 4];32(5):1100–6. Available from: <http://doi.wiley.com/10.1111/jgh.13647>
83. Mallet V, Hamed K, Schwarzinger M. Prognosis of patients with chronic hepatitis B in France (2008–2013): A nationwide, observational and hospital-based study. *J Hepatol*. 2017 Mar 1;66(3):514–20.
84. Shim JJ, Oh CH, Kim JW, Lee CK, Kim BH. Liver cirrhosis stages and the incidence of hepatocellular carcinoma in chronic hepatitis B patients receiving antiviral therapy. *Scand J Gastroenterol* [Internet]. 2017 Sep 2 [cited 2020 Jul 3];52(9):1029–36. Available from: <https://www.tandfonline.com/doi/full/10.1080/00365521.2017.1335773>
85. Brouwer WP, van der Meer AJ, Boonstra A, Pas SD, de Knegt RJ, de Man RA, et al. The impact of PNPLA3 (rs738409 C>G) polymorphisms on liver histology and long-term clinical outcome in chronic hepatitis B patients. *Liver Int* [Internet]. 2015 Feb 1 [cited 2020 Jul 3];35(2):438–47. Available from: <https://pubmed.ncbi.nlm.nih.gov/25284145/>
86. Fu S-C, Huang Y-W, Wang T-C, Hu J-T, Chen D-S, Yang S-S. Increased risk of hepatocellular carcinoma in chronic hepatitis B patients with new onset diabetes: a nationwide cohort study. *Aliment Pharmacol Ther* [Internet]. 2015 Jun [cited 2020 Feb 4];41(11):1200–9. Available from: <http://doi.wiley.com/10.1111/apt.13191>
87. Hsiang JC, Gane EJ, Bai WW, Gerred SJ. Type 2 diabetes: A risk factor for liver mortality and complications in hepatitis B cirrhosis patients. *J Gastroenterol Hepatol* [Internet]. 2015 Mar [cited 2020 Feb 5];30(3):591–9. Available from: <http://doi.wiley.com/10.1111/jgh.12790>
88. Hsu YC, Wu CY, Lane HY, Chang CY, Tai CM, Tseng CH, et al. Determinants of hepatocellular carcinoma in cirrhotic patients treated with nucleos(t)ide analogues for chronic hepatitis B. *J Antimicrob Chemother*. 2014;69(7):1920–7.
89. Kim SS, Hwang JC, Lim SG, Ahn SJ, Cheong JY, Cho SW. Effect of

- Virological Response to Entecavir on the Development of Hepatocellular Carcinoma in Hepatitis B Viral Cirrhotic Patients: Comparison Between Compensated and Decompensated Cirrhosis. *Am J Gastroenterol* [Internet]. 2014 Aug [cited 2020 Feb 10];109(8):1223–33. Available from: <http://insights.ovid.com/crossref?an=00000434-201408000-00016>
90. Chen CT, Chen JY, Wang JH, Chang KC, Tseng PL, Kee KM, et al. Diabetes mellitus, metabolic syndrome and obesity are not significant risk factors for hepatocellular carcinoma in an HBV- and HCV-endemic area of Southern Taiwan. *Kaohsiung J Med Sci*. 2013 Aug 1;29(8):451–9.
 91. Walter SR, Thein H-H, Gidding HF, Amin J, Law MG, George J, et al. Risk factors for hepatocellular carcinoma in a cohort infected with hepatitis B or C. *J Gastroenterol Hepatol* [Internet]. 2011 Dec 1 [cited 2020 Feb 7];26(12):1757–64. Available from: <http://doi.wiley.com/10.1111/j.1440-1746.2011.06785.x>
 92. Wang CS, Yao WJ, Chang TT, Wang ST, Chou P. The impact of type 2 diabetes on the development of hepatocellular carcinoma in different viral hepatitis statuses. *Cancer Epidemiol Biomarkers Prev* [Internet]. 2009 Jul [cited 2020 Feb 7];18(7):2054–60. Available from: <http://www.ncbi.nlm.nih.gov/pubmed/19549812>
 93. Chen CL, Yang HI, Yang WS, Liu CJ, Chen PJ, You SL, et al. Metabolic Factors and Risk of Hepatocellular Carcinoma by Chronic Hepatitis B/C Infection: A Follow-up Study in Taiwan. *Gastroenterology* [Internet]. 2008 Jul [cited 2020 Feb 7];135(1):111–21. Available from: <http://www.ncbi.nlm.nih.gov/pubmed/18505690>
 94. Yu MW, Shih WL, Lin CL, Liu CJ, Jian JW, Tsai KS, et al. Body-mass index and progression of hepatitis B: A population-based cohort study in men. *J Clin Oncol* [Internet]. 2008 Dec 1 [cited 2020 Feb 10];26(34):5576–82. Available from: <http://www.ncbi.nlm.nih.gov/pubmed/18955457>
 95. Lai MS, Hsieh MS, Chiu YH, Chen THH. Type 2 diabetes and hepatocellular carcinoma: A cohort study in high prevalence area of hepatitis virus infection. *Hepatology* [Internet]. 2006 Jun 1 [cited 2020 Jul 4];43(6):1295–302. Available from: <https://ezproxy-prd.bodleian.ox.ac.uk:5110/doi/full/10.1002/hep.21208>
 96. Brichler S, Nahon P, Zoulim F, Layese R, Bourcier V, Audureau E, et al. Non-virological factors are drivers of hepatocellular carcinoma in viro-suppressed hepatitis B cirrhosis: Results of ANRS CO12 CirVir cohort. *J Viral Hepat*

- [Internet]. 2019 Mar 1 [cited 2020 Jul 2];26(3):384–96. Available from: <http://doi.wiley.com/10.1111/jvh.13029>
97. Lee J, Yoo SH, Sohn W, Kim HW, Choi YS, Won JH, et al. Obesity and hepatocellular carcinoma in patients receiving entecavir for chronic Hepatitis B. *Clin Mol Hepatol* [Internet]. 2016 [cited 2020 Jul 3];22(3):339–49. Available from: [/pmc/articles/PMC5066372/?report=abstract](https://pubmed.ncbi.nlm.nih.gov/3066372/)
 98. Yip TC, Wong VW, Chan HL, Tse Y, Hui VW, Liang LY, et al. Thiazolidinediones reduce the risk of hepatocellular carcinoma and hepatic events in diabetic patients with chronic hepatitis B. *J Viral Hepat* [Internet]. 2020 May 14 [cited 2020 Jul 1];jvh.13307. Available from: <https://onlinelibrary.wiley.com/doi/abs/10.1111/jvh.13307>
 99. Yu MW, Lin CL, Liu CJ, Yang SH, Tseng YL, Wu CF. Influence of Metabolic Risk Factors on Risk of Hepatocellular Carcinoma and Liver-Related Death in Men With Chronic Hepatitis B: A Large Cohort Study. *Gastroenterology*. 2017 Oct 1;153(4):1006-1017.e5.
 100. Deyo RA, Cherkin DC, Ciol MA. Adapting a clinical comorbidity index for use with ICD-9-CM administrative databases. *J Clin Epidemiol*. 1992;45(6):613–9.

Figures and Tables

Table 1a. Effect estimates for case-control studies investigating the association of diabetes mellitus with hepatocellular carcinoma risk.

Country, Author (Year)	Participants, n	HCC Cases, n	Age at baseline, years	Sex (% male)	Source of controls	Relative risk measure [†]	Risk Ratio (95% Confidence intervals)
Taiwan, Shyu (2019) (68)	5,932	731	40-90 (range)	56.7	Same insurance database as cases	aHR	1.35 (1.16-1.57)
US, Kennedy (2018) (36)	1,101	278	64	78	Same clinical data repository as cases	aOR	0.6 (0.4-0.9)
China, Li (2018) (69)	322	112	52 (median, HCC cases), 51 (median, non-HCC controls)	18.8 (HCC cases) 26.2 (non-HCC controls)	Hospital controls	aOR	2.042 (1.150-5.018)
China, Han (2017) (70)	182	73	56.18 (mean)	79.1	Hospital controls	N/A	N/A
China, Gao (2013) (35)	370	122	54.7 (mean)	86.9	Hospital controls	aOR‡	0.376 (0.175-0.807) (compensated cirrhosis) 0.192 (0.054-0.679) (decompensated cirrhosis)
China, Li (2012) (34)	6275	1105	53.8 (mean, cases) 44.9 (mean, controls)	84.7 (cases) 73.8 (controls)	Hospital controls	aOR	0.8 (0.6-1.1)

Taiwan, Chao (2011) (37)	1142	124	30-65	100	Control group is random sample of non-HCC participants from total cohort	aHR	Those with homeostasis model assessment-insulin resistance (HOMA-IR, fasting insulin (μU/ml) X fasting glucose (mmol/l)/22.5) index scores of <0.46, 0.78-1.22 and >1.22 had HRs of 1.48 (0.90-2.44), 0.92 (0.54-1.55) and 1.96 (1.23-3.10) as compared to those with a HOMA-IR index of 0.46-0.77
--------------------------	------	-----	-------	-----	--	-----	--

aHR, adjusted Hazards Ratio; aOR, adjusted Odds Ratio; N/A, not available.

† Adjusted risk ratios are minimally adjusted for age and sex.

‡ Adjusted for age but not sex.

Table 1b. Effect estimates for cohort studies investigating the association of diabetes mellitus with hepatocellular carcinoma risk.

Country, Author (Year)	Participants, n	HCC Cases, n	Age at baseline, years	Sex (% male)	Relative risk measure [†]	Risk Ratio (95% Confidence intervals)
UK, Ferreira (2020) (31)	3927	16-19	39.2 (mean, non-DM) 54.9 (mean, DM)	50	aHR	1.40 (0.47 to 4.24)
Korea, Goh (2020) (71)	7713	702	50 (statin users) 47 (statin nonusers)	66	aHR	1.31 (1.09 to 1.58)
Korea, Kim (2020) (72)	3277	292	48.7 (mean)	63	aHR	1.35 (0.99 to 1.84)
Singapore, Lim (2020) (73)	289	27	43.2 (mean, Nonhepatic steatosis) 46.4 (mean,	72	aHR‡	2.69 (1.07 to 6.76)

			Hepatic steatosis)			
United States and Asia-Pacific, Yang (2020) (74)	5365	378	48.4 (mean)	69	aHR	1.69 (1.28 to 2.22)
Korea, Cho (2019) (75)	826	86	52 (mean, NAFLD) 54 (mean, non-NAFLD)	61	uHR	1.51 (0.90 to 2.55)
China, Tan (2019) (76)	4454	89	45.4 (mean)	68	aHR	2.28 (1.36 to 3.80)
China, Wang (2019) (77)	1325	105	50 (median)	73	aHR‡	1.90 (1.19 to 3.05)
Hong Kong, Yip (2018) (78)	4568	54	56.7 (mean)	63	aHR	1.85 (1.04 to 3.28)
Taiwan & Hong Kong, Hsu (2018) (79)	23,851 (Taiwan) 19,321 (Hong Kong)	596 (Taiwan) 383 (Hong Kong)	47.5 (median, Taiwan) 52.1 (median, Hong Kong)	74 (Taiwan) 66.05 (Hong Kong)	aHR	1.30 (1.10 to 1.60)
Taiwan, Hsu (2018) (53)	27,820	802	48.1 (median)	74	aHR	1.25 (1.06 to 1.47)
Korea, Kim (2018) (54)	214,167	11,241	N/A	100	aHR	1.23 (1.15 to 1.34)
Hong Kong, Chan (2017) (80)	270	11	43.6 (mean)	75.2	uHR	0.53 (0.07 to 4.33)
US, Chayanupatkul (2017) (81)	8539	317	N/A	N/A	uHR	1.44 (0.63 to 3.32)
Korea, Kim (2017) (82)	1696	24	50 (median)	56.8	aHR	1.75 (0.51 to 6.01)
France, Mallet (2017) (83)	48,189	3145	44 (median)	59	aHR	1.26 (1.15 to 1.37)
Korea, Shim (2017) (84)	356	45	52	60	uHR	1.66 (0.86 to 3.21)
Netherlands, Brouwer (2015) (85)	531	13	N/A for cohort	67	uHR	6.80 (2.10 to 22.10)

Taiwan, Fu (2015) (86)	4179	111 42 (non-DM) 69 (DM)	49.19 (mean, DM group) 49.05 (mean, non-DM)	58.55 (DM), 58.37 (non-DM)	aHR	1.80 (1.19 to 2.71)
New Zealand, Hsiang (2015) (87)	223	36	51 (mean)	66.8	aHR	2.36 (1.14 to 4.85)
Taiwan, Hsu (2014) (88)	210	35	52.8 (median)	73.3	aHR	3.49 (1.54 to 7.91)
South Korea, Kim (2014) (89)	306	45	49.4 (mean)	68.3	aHR	1.23 (0.59 to 2.57)
Taiwan, Wu (2014) (55)	43190	5446	43.5 (mean, same for both treated and untreated)	76.9 (treated), 75.5 (untreated)	aHR	1.05 (0.93 to 1.17)
Taiwan, Chen (2013) (90)	5606	57	>40	N/A	uHR	1.61 (0.73 to 3.58)
Australia, Walter (2011) (91)	43,892	242	34.9 (median)	N/A	N/A	Effect size N/A
Taiwan, Wang (2009) (92)	696	24	49.3 (mean)	51.3	aHR	1.3 (0.3 to 5.6)
Taiwan, Chen (2008) (93)	3931	187	45.9	59.3	aHR	2.41 (1.17 to 4.95)
Taiwan, Yu (2008) (94)	2903	134	N/A	100	aOR	1.16 (0.55 to 2.42)
Taiwan, Lai (2006) (95)	6545	46	N/A	N/A	aHR	1.04 (0.36 to 3.02)

aHR, adjusted Hazards Ratio; uHR, unadjusted Hazards Ratio; aOR, adjusted Odds Ratio.

† Adjusted risk ratios are minimally adjusted for age and sex.

‡ Adjusted for age but not sex.

Table 2. Effect estimates for cohort studies investigating the association of hypertension with hepatocellular carcinoma risk.

Country, Author (Year)	Participants, n	HCC Cases, n	Age at baseline, years	Sex (% male)	Relative risk measure [†]	Risk Ratio (95% Confidence intervals)
UK, Ferreira (2020) (31)	3927	16-19	39.2 (mean, non-DM) 54.9 (mean, DM)	50	aHR	1.19 (0.95, 1.48)
France, Bricler (2019) (96)	317	27	53 (median)	82	uHR	2.91 (1.33-6.35)
Korea, Cho (2019) (75)	826	86	52 (mean, NAFLD) 54 (mean, non-NAFLD)	61	aHR‡	1.38 (0.85-2.24)
China, Tan (2019) (76)	4454	89	45.4 (mean)	68	aHR	0.96 (0.60–1.53)
Taiwan, Hsu (2018) (53)	27,820	802	48.1 (median)	74	uHR	2.13 (1.85-2.45)
Hong Kong, Chan (2017) (80)	270	11	43.6 (mean)	75.2	uHR	2.33 (0.68-7.98)
US, Chayanupatkul (2017) (81)	8539	317	N/A	N/A	aHR‡	3.15 (1.02–9.75)
Korea, Kim (2017) (82)	1696	24	50 (median)	56.8	aHR	1.70 (0.71–4.05)
China, Gao (2013) (35) §	370	122	54.7 (mean)	86.9	aOR‡	N/A (p>0.1)
Taiwan, Hsu (2014) (88)	210	35	52.8 (median)	73.3	uHR	1.63 (0.74-3.60)
Taiwan, Chen (2008) (93)	3931	187	45.9	59.3	aHR	0.45 (0.16–1.21)

aHR, adjusted Hazards Ratio; uHR, unadjusted Hazards Ratio.

† Adjusted risk ratios are minimally adjusted for age and sex.

‡ Adjusted for age but not sex.

§ Case-control study using hospital controls.

Table 3. Effect estimates for associations of other comorbidities and metabolic factors with hepatocellular carcinoma risk.

Comorbidity	Relative risk measure[†]	Risk Ratio (95% Confidence intervals)
Dyslipidaemia		
UK, Ferreira (2020) (31)‡	aHR	0.77 (0.63, 0.95)
Korea, Cho (2019) (75)	uHR	0.60 (0.26-1.39)
China, Tan (2019) (76) ‡ §	aHR	0.67 (0.39–1.16)
China, Tan (2019) (76) ‡ ¶	aHR	0.49 (0.12–2.00)
US, Chayanupatkul (2017) (81) ‡	uHR	0.86 (0.38–2.00)
Taiwan, Hsu (2014) (88)	uHR	0.34 (0.05-2.50)
Taiwan, Wu (2014) (55) ‡ ¶	aHR	0.87 (0.61-1.23)
Obesity (BMI ≥ 30 kg/m²)		
France, Bricler (2019) (96)	aHR	2.67 (1.04-6.84)
US, Chayanupatkul (2017) (81)	aHR††	2.21 (0.75–6.56)
Obesity (BMI > 30 kg/m²)		
China, Tan (2019) (76)	aHR	1.59 (0.73–3.44)
Obesity (BMI ≥ 27.5 kg/m²)		
Netherlands, Brouwer (2015) (85)	uHR	1.90 (0.60-6.20)
Obesity (BMI ≥ 27 kg/m²)		
Taiwan, Chen (2013) (90)	uHR	0.84 (0.44–1.60)
Obesity (BMI ≥ 25 kg/m²)		
Korea, Lee (2016) (97)	uHR	0.90 (0.17-4.62)
Statin use		
UK, Ferreira (2020) (31)	aHR	0.36 (0.19, 0.68)
Hong Kong, Yip (2020) (98)	aHR	0.81 (0.73–0.90)
Hong Kong, Yip (2018) (78)	aHR	0.52 (0.26–1.01)
CVD		
Korea, Cho (2019) (75) – CVD	uHR	1.46 (0.64-3.34)
US, Chayanupatkul (2017) (81) – IHD	uHR	1.19 (0.39–3.65)
France, Mallet (2017) (83) - CVD	aHR	0.57 (0.53–0.62)

Taiwan, Wu (2014) (55) - ACS	aHR	0.66 (0.55-0.79)
Taiwan, Wu (2014) (55) - Cerebrovascular disease	aHR	0.50 (0.40-0.64)
Other		
Hong Kong, Yip (2020) (98) - Thiazolidinedione use	aHR	0.57 (0.28-1.14)
Hong Kong, Yip (2020) (98) - Metformin use	aHR	0.93 (0.85-1.02)
Hong Kong, Yip (2020) (98) - Sulphonylurea use	aHR	1.19 (1.09-1.30)
Hong Kong, Yip (2020) (98) - Insulin use	aHR	1.32 (1.19-1.46)
Hong Kong, Yip (2020) (98) - Aspirin/clopidogrel use	aHR	0.76 (0.68-0.85)
Korea, Cho (2019) (75) - NAFLD	aHR	1.67 (1.05-2.63)
France, Mallet (2017) (83) - Renal disease (off dialysis, no transplant)	aHR	0.34 (0.28-0.41)
France, Mallet (2017) (83) - Renal disease (on dialysis, no transplant)	aHR	0.36 (0.22-0.60)
France, Mallet (2017) (83) - Respiratory disease	aHR	0.37 (0.33-0.42)
Taiwan, Yu (2017) (99) - Metabolic risk factors†††	aHR	HRs for obese or diabetic, obese and diabetic, and ≥3 metabolic risk factors were 1.29 (95% CI 0.92-1.81), 1.18 (0.16-8.54) and 2.61 (1.34-5.08), respectively, compared to the non-obese and non-diabetic reference group.
Taiwan, Wu (2014) (55) - COPD	aHR	0.71 (0.59-0.87)
Taiwan, Wu (2014) (55) - Renal failure	aHR	0.84 (0.68-1.04)
Taiwan, Chen (2013) (90) - Metabolic syndrome	uHR	1.19 (0.63-2.26)

aHR, adjusted Hazards Ratio; uHR, unadjusted Hazards Ratio; BMI, body mass index; CVD, cardiovascular disease; IHD, ischaemic heart disease; ACS, acute coronary syndrome; NAFLD, non-alcoholic fatty liver disease; COPD, chronic obstructive pulmonary disease.

† Adjusted risk ratios are minimally adjusted for age and sex.

‡ Defined specifically as hyperlipidaemia.

§ Defined specifically as hypertriglyceridaemia.

¶ Defined specifically as hypercholesterolaemia.

†† Adjusted for age but not sex.

††† Metabolic risk factors (obesity, diabetes, hypertriglyceridemia and HT), with exposure groups split into groups of 0, 1, 2 and ≥3 risk factors.

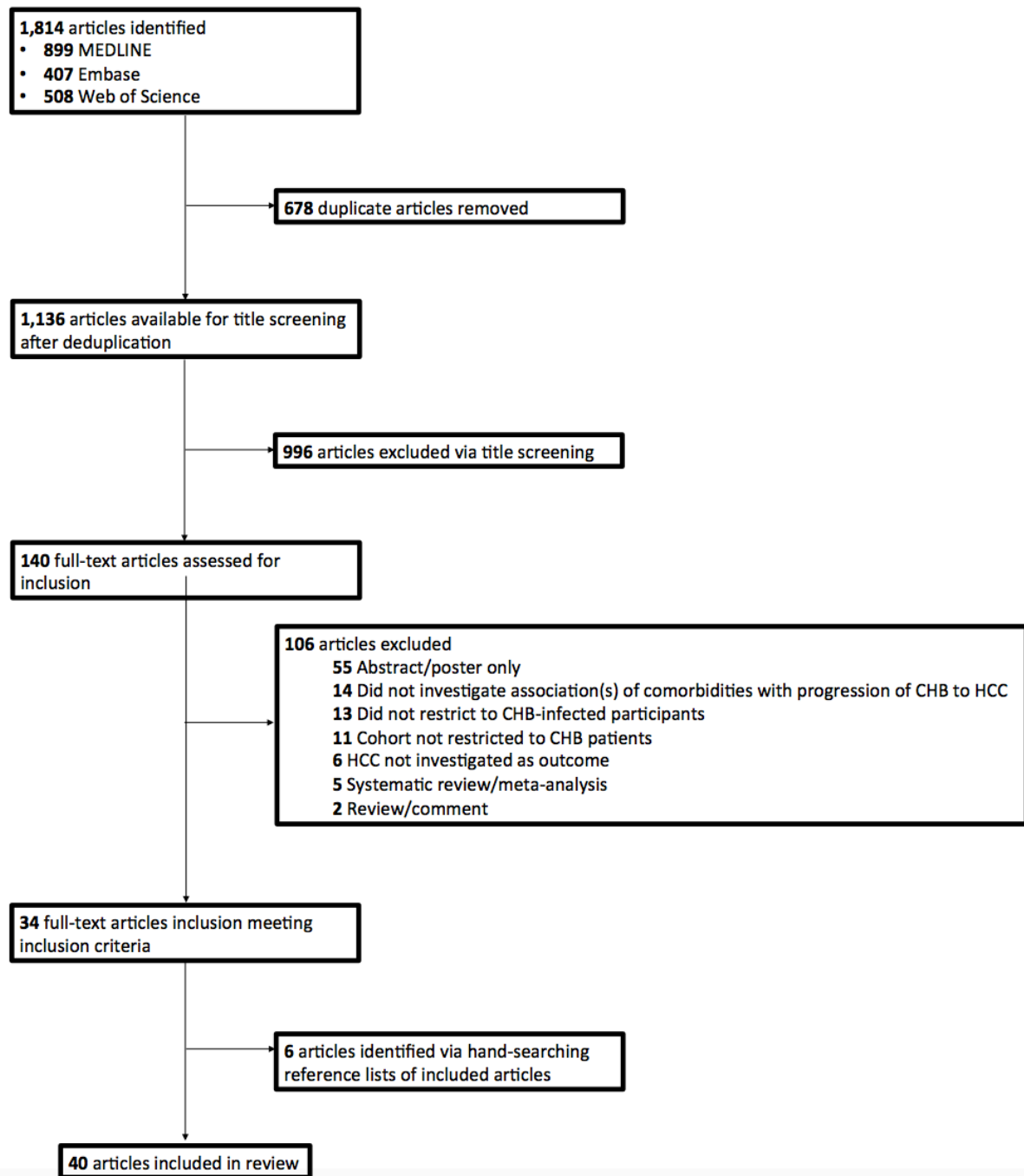


Figure 1. Flow chart of study selection. MEDLINE, Embase and Web of Science databases were systematically searched using relevant terms to identify relevant human studies published in English from 1st January 2000 to 24th June 20

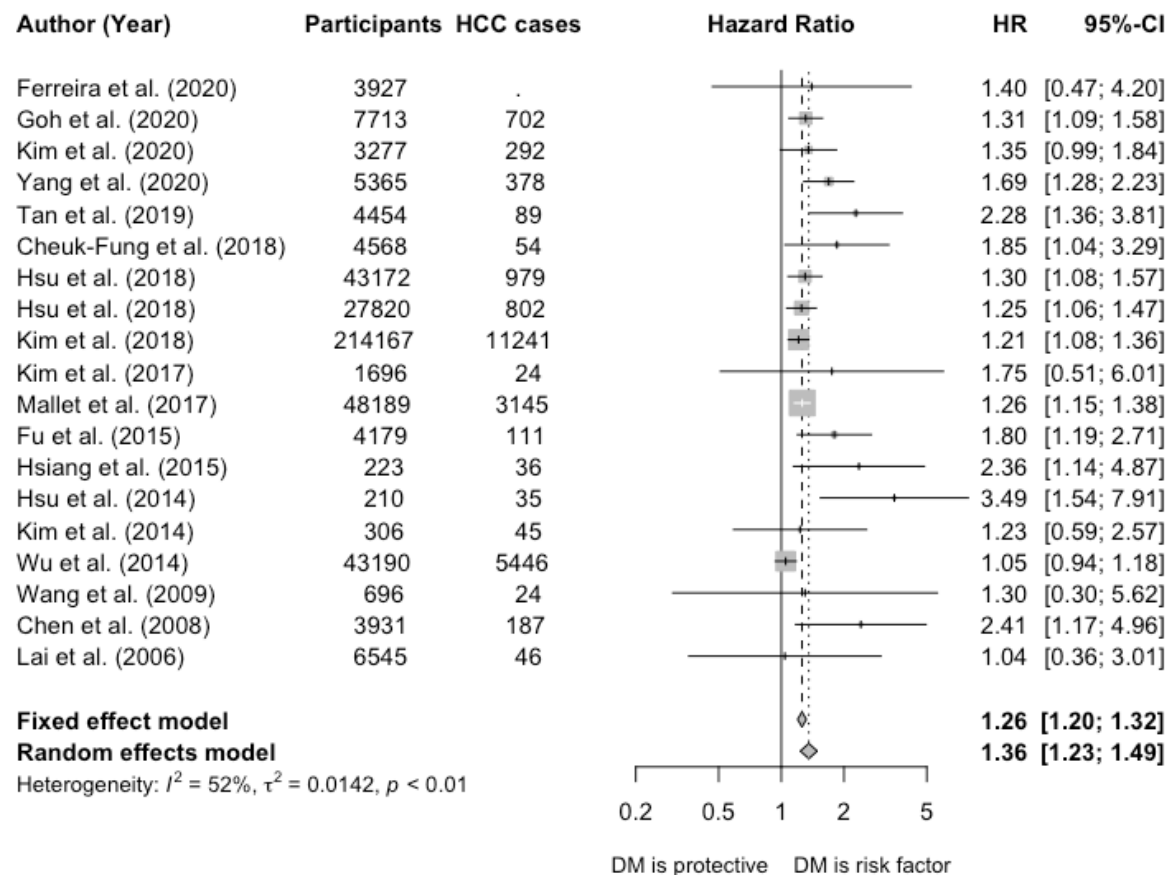


Figure 2. Forest plot of hazard ratios from longitudinal cohort studies investigating the association of diabetes mellitus with risk of progression of chronic hepatitis B infection to hepatocellular carcinoma. The study by Yu et al (94) provided an Odds Ratio and was excluded from the meta-analysis. Dashed vertical lines represent HR based on meta-analysis of all studies by fixed effect and random effects models. The studies for pooling the HR had sufficient quality (quality scores ≥ 5).
HR, hazard ratio; CI, confidence interval; DM, diabetes mellitus.

