

1 **Title**

2 Stromal Tumor Infiltrating Lymphocytes (sTILs) as a putative prognostic marker to identify  
3 a responsive subset of TNBC in an Indian Breast Cancer Cohort.

4  
5 **Authors:**

6 Pooja M. Vaid, MSc<sup>1,2</sup>, Anirudha K. Puntambekar, MBBS, MD<sup>3</sup>, Rituja A. Banale, BSc<sup>1,4</sup>,  
7 Ruhi R. Reddy, B.Pharm<sup>1,4</sup>, Rohini R. Unde, MSc in Clinical Research<sup>1,4</sup>, Namrata P.  
8 Namewar, MSc<sup>1,4</sup>, Devaki A. Kelkar, PhD<sup>1,4</sup>, LS Shashidhara, PhD,  
9 FNA, FASc, FNAsc<sup>1,2,5</sup>, Chaitanyanand B Koppiker, MS in Oncosurgery<sup>1,4</sup> and Madhura  
10 Kulkarni, PhD<sup>1,4,\*</sup>.

11  
12 **Affiliations:**

13 <sup>1</sup>Centre for Translational Cancer Research: a joint initiative of Indian Institute of Science  
14 Education and Research (IISER) Pune and Prashanti Cancer Care Mission (PCCM)  
15 Pune; <sup>2</sup>Department of Biological Sciences, Ashoka University, Sonipat; <sup>3</sup>Pathology  
16 Department, Ruby Hall Clinic Pune; <sup>4</sup>Prashanti Cancer Care Mission Pune; <sup>5</sup>Indian  
17 Institute of Science Education and Research Pune.

18  
19 \*Corresponding author: [madhura.kulkarni@iiserpune.ac.in](mailto:madhura.kulkarni@iiserpune.ac.in)

20 Madhura Kulkarni, PhD  
21 Senior Scientist and DBT-Ramalingaswami Fellow  
22 Centre for Translational Cancer Research.  
23 Prashanti Cancer Care Mission, Pune and IISER Pune.  
24 B-403, Third Floor, Main Building  
25 Dr Homi Bhabha Road, Pashan, Pune 411 008  
26 Maharashtra INDIA  
27 Email: madhura.kulkarni@iiserpune.ac.in  
28 Phone: +91-2025908099

29 **Conflict of interest statement:**

30 The authors declare no conflict of interest

31 **Funding and Acknowledgement:**

32 MK would like to acknowledge DBT- Ramalingaswami 're-entry' fellowship awarded by  
33 DBT-India. LSS would like to acknowledge DST-JC Bose Research Fellowship. Research  
34 grant to CTCR is supported by Bajaj Auto Ltd. PV would like to acknowledge Aditi Khatpe,  
35 Rutvi Shah and Dimple Adiwai for their help in standardization.

36

37 **Running title:**

38 Affordable prognostic marker to identify responsive TNBC

39

40 **Key words:** Stromal TILs, TNBC, Breast Cancer in India.

41

42 **Abstract:**

43 Objectives

44 Prognostic significance of stromal tumor infiltrating lymphocytes (sTILs) is evaluated to  
45 identify a responsive subset of TNBC in an Indian cohort of breast cancer patients.

46 Methods

47 A retrospective cohort of breast cancer patients from a single onco-surgeon breast cancer  
48 clinic treated with uniform treatment strategy across is evaluated for sTILs. FFPE tissue  
49 of primary tumor of invasive breast carcinoma are collected with ethical approvals. Tumor  
50 sections blinded for subtypes are stained with H&E and scored for sTILs by a pathologist  
51 following Immuno-Oncology TILs working group's scoring guidelines.

52 Results

53 Analysis of 144 primary breast tumors for sTILs scores re-enforces significantly higher  
54 infiltration in TNBC tumors than HER2+ and ER+ tumors. Higher sTILs scores co-relate  
55 with gradually incremental pathological response to therapy specifically in TNBC subset  
56 and with better disease-free survival outcomes. Within TNBC, older and post-menopausal  
57 patients harbor higher scores of sTILs.

58 Conclusion

59 Despite a small cohort of breast cancer patients, TNBC subtype reflected significantly  
60 higher scores of sTILs with better response to therapy and disease-free outcomes as  
61 compared to other breast cancer subtypes. A larger number of breast cancer patients  
62 from an Indian cohort will strengthen the findings to establish sTILs as a marker to identify  
63 a responsive subset of TNBC.

64 **Key points:**

65 Key point 1:

66 This is a first attempt to understand the significance of stromal tumor-infiltrating  
67 lymphocytes in a breast cancer cohort from India, where higher recurrence and mortality  
68 rates are observed.

69 Key point 2:

70 TNBC tumors show higher sTILs infiltration compared to non-TNBC patients. Higher  
71 sTILs scores within TNBC co-relates with better therapy response disease-free survival.

72 Key point 3:

73 Higher sTILs scores in TNBC tumors in an Indian cohort showed a novel and unique  
74 association with old age and post-menopausal patients.

## 75 INTRODUCTION

76 Breast Cancer is the leading cause for cancer related deaths in India, with close to 50%  
77 mortality rate<sup>1</sup>. Though there are effective treatments available for Breast Cancer, most  
78 targeted therapies are available for subtypes that express the molecular receptors ER,  
79 PR and/or HER2. A subtype that lacks expression of these receptors; triple negative  
80 breast cancer (TNBC) cannot avail targeted therapy<sup>2</sup>. With lack of targeted treatment,  
81 TNBC is an aggressive subset of breast cancer with higher rates of recurrence and lower  
82 overall survival<sup>3,4</sup>.

83 Worldwide, the prevalence of TNBC is 10-12%<sup>5,6</sup>, while in India, the prevalence of TNBC  
84 is reported to be significantly higher and up to 20-30%<sup>7-9</sup>. Moreover, the proportion of  
85 TNBC that presents with aggressive clinicopathological features such as younger and  
86 pre-menopausal age at incidence, high grade is also higher in Indian population<sup>7</sup>. With  
87 no targetable treatment and higher proportions of aggressive disease at incidence, TNBC  
88 poses a clinical challenge in India.

89 As of now, prognostication of TNBC is guided by clinicopathologic features such as  
90 tumour size, proliferative index, lymph node involvement as well as age and co-existing  
91 conditions. Standard treatment for TNBC includes neoadjuvant chemotherapy (NACT),  
92 followed by surgery<sup>10-12</sup>. TNBC is reported to show better response to NACT than ER+ve  
93 subtype i.e. 22% to 56% depending on the treatment regime used<sup>3,13,14</sup>. Pathological  
94 complete response in TNBC subtype is associated with better disease free survival<sup>13,14</sup>.  
95 Cases with residual disease have been shown to have a significantly higher chance of  
96 recurrence within 1<sup>st</sup> three years of treatment and reduced overall survival<sup>14-16</sup>.

97 Recent studies have revealed tumor infiltrating lymphocytes (TILs) to be a promising  
98 prognostic marker to predict response to therapy, specifically in TNBC<sup>17-19</sup>. Tumor  
99 infiltrating lymphocytes are cytotoxic lymphocytes infiltrating into tumor and stromal  
100 regions as a host immune response to target cancer cells<sup>20,21</sup>. Higher proportion of  
101 infiltrating lymphocytes, especially in the stroma co-operate with the exogenous therapy  
102 enhancing the anti-tumor effects of the therapy<sup>22,23</sup>. Meta-analysis of 3770 patients with  
103 higher TILs scores predicted complete response to NACT in 50% of the TNBC patients  
104 and high TILs scores associated with better long-term survival over 3 years, emphasizing  
105 prognostic significance of TILs in TNBC<sup>24,25</sup>.

106 With high proportion of TNBC in India, understanding TILs distribution and its association  
107 with response to therapy and disease outcome may help predict a subset that is  
108 responsive and has better chance at disease free survival. If similar associations are  
109 found as seen in meta-analysis of western cohorts, TILs evaluation may provide a  
110 promise to predict a responsive subset of TNBC in India. In addition, TILs are easy to  
111 assess on histopathology of tumor tissue biopsies thus can be cost-effective and easily  
112 employable prognostic tool especially for low-resource countries like India.

113  
114 Here we evaluate TILs with respect to clinicopathological features and outcomes of breast  
115 cancer patient cohort from a single surgeon and oncologist breast cancer unit in India. All  
116 the patients in the cohort have received similar treatment regimens and follow-up, giving

117 high confidence in uniformity regarding treatment strategies. Primary, pre-treatment  
118 tumor tissue of 144 breast cancer patients are scored for stromal TILs according to the  
119 guidelines provided by the International TILs working group<sup>23</sup>. Association of TILs scores  
120 with clinicopathological features such as age at diagnosis, menopausal status, grade,  
121 tumor size, lymph node involvement and disease outcomes are evaluated. For patients  
122 that received NACT (n=35), response to therapy and its association with TILs scores is  
123 also evaluated.

124  
125 Despite the size of the cohort, a significant association of high sTILs scores with TNBC  
126 subtype is observed. Higher sTILs scores co-relate with better response to therapy and  
127 better disease outcome specifically in TNBC compared to non-TNBC. sTILs analysis  
128 within TNBC reflected distinct distribution between young, pre-menopausal patients as  
129 compared to old and post-menopausal patients. Old, post-menopausal patients  
130 presented with higher sTILs scores. Detailed co-relation with various clinical parameters  
131 of TNBC in comparison to non-TNBC is reported here.

132  
133  
134 **MATERIALS AND METHODS**

135 **Patient tissue samples and meta-data:** Formalin-fixed paraffin-embedded (FFPE)  
136 tissue samples and associated deidentified patient meta data are received from the clinic,  
137 following appropriate patient consent and ethical approval (dated 21st July 2018  
138 #IECHR/VB/2018/016). Patients who were diagnosed at or underwent/are undergoing  
139 treatment at the clinic from 2012 up to 15<sup>th</sup> March 2019 are included in the study. Patient  
140 data, including diagnostic clinico-pathological data, type of therapy and post-treatment  
141 follow-up data up to last follow-up /recurrence date/death is compiled and digitized. All  
142 FFPE tissue blocks used are of primary (pre-treatment) tissue. Of the 144 FFPE tissue  
143 samples used in this study, 106 are prepared from core biopsy tissue. 61 samples are of  
144 the naive tumor tissue block prepared from surgically excised tissue. All surgery tissue  
145 used is from patients who did not receive neo-adjuvant therapy.

146 Molecular subtypes are inferred based on patient immunohistochemistry reports.  
147 Samples are divided into ER+/HER-, HER+ and TNBC based on ER/PR expression and  
148 HER2 scores. ER+/HER- samples are with more than 1% ER expression and HER2 IHC  
149 score of 0, 1 or 2 and FISH-negative. Samples with IHC HER2 grade 3 or grade 2 FISH  
150 positive are taken as HER2+. Triple-negative samples are the ones with less than 1% ER  
151 and PR expression and HER2 IHC grade 1 or 2 and FISH-negative. Pre-treatment  
152 primary tumor tissue selection for these three molecular subtypes is described in the  
153 flowchart in Figure 1.

154 For NACT, TNBC patients (n=14) were treated with Taxanes with or without an  
155 Anthracycline/Cyclophosphamide (AC) or 5-Fluoro-Uracil/AC regimen. ER+ patients  
156 (n=15) were treated with anti-estrogens such as Letrozole or Tamoxifen. For HER2  
157 positive patients (n=6), AC followed by a Taxane with trastuzumab was administered.

158 For ACT, most TNBC cases received AC + Taxane as adjuvant therapy, some cases  
159 received Fluorouracil in addition. For non-TNBC cases, HER2+ cases were

160 mostly treated with Trastuzumab with or without a Taxane, or FAC and  
161 Taxane, some hormone positive HER2 cases received hormonal therapy.  
162 Hormone positive cases were mostly treated with hormone therapy or with  
163 an AC + Taxane regimen.

164 Response to NACT is computed for 33 out of 35 patients who underwent NACT. Post-  
165 NACT, response to treatment is calculated by comparing cTcN values with ypTyPN. In  
166 case of absence of residual tumor and absence of lymph node metastasis during  
167 pathological examination of surgically removed tissue i.e. ypT0N0 status, response is  
168 considered as pathologically complete response (pCR). The presence of residual tumor  
169 and/or lymph node metastasis in surgically removed tissue is referred as Residual  
170 disease (RD). Response in patients with residual disease is further subdivided into three  
171 categories – partial, stable or progressive disease when compared to pre-treatment tumor  
172 size and lymph node positivity (stage). Partial response cases show downstaging, stable  
173 disease has no change in stage and progressive disease shows an increase in tumor size  
174 and/or lymph node positivity.

### 175 **Histopathology of FFPE tissue blocks**

176 FFPE blocks once selected are processed for histopathology. Tumor sections of 4-5  $\mu$ m  
177 are obtained using Leica Microtome RM2255. Tissue slides are deparaffinized. Each slide  
178 is cleaned and stained with a drop of undiluted Hematoxylin solution (Delafield, 38803) in  
179 a humidifying chamber for 15 mins followed by 1% eosin (Qualigen Q39312). The slides  
180 are then gradually dehydrated in ethanol solutions followed by Xylene. Slides are  
181 mounted in DPX (Q18404).

### 182 **Imaging of histopathology slides**

183 All slides are imaged by OptraScan using OS-15 bright field digital scanner at 400X  
184 magnification. Images are viewed using the 'Image viewer' software provided by Optra.  
185 These are then converted to TIFF format and processed using Image Viewer Version  
186 2.0.4 by OptraScan for scale bars.

### 187 **Stromal Tumor Infiltrating Lymphocytes (sTILs) Scoring.**

188 TILs percent distribution within stroma surrounding the tumor tissue is assessed from  
189 H&E stained histopathology section of pre-treatment primary tumor tissue. The scoring is  
190 done by a single pathologist (AP) according to the recommendations of The TILs Working  
191 group<sup>23</sup>. The pathologist was blinded to the clinical data as well as molecular subtypes of  
192 the tissue. For our study, only stromal TILs are scored and used for the analysis.

### 193 **Statistical Analysis**

194 All statistical analysis is done using GraphPad Prism v.5. Demographic table was  
195 prepared using IBM SPSS Statistics v. 21.0.0.0. Distribution of clinicopathological  
196 characteristics within the cohort and breast cancer subtypes is tested using 2x2 (2x4 in  
197 case of tumor size) Chi square contingency test. Mean age across subtypes is compared  
198 using unpaired two-tailed Student's t-test. Column statistics for sTILs are computed on  
199 GraphPad Prism v.5 to calculate mean and SD/SE across each sub-category of clinical  
200 characteristics. Significant difference in distribution between TNBC and on-TNBC sTILs



201 scores across clinicopathological characteristics is tested with one-way ANOVA followed  
202 by Tukey's Multiple Comparison Test. Statistical analysis is done using GraphPad Prism  
203 v.5 and graphs are plotted.

204 Disease outcomes are computed as follows: disease free survival (DFS) is calculated as  
205 time in months from date of surgery till date of recurrence or last follow-up date. Overall  
206 survival (OS) is calculated as time in months from the diagnosis date (biopsy date) till last  
207 follow-up date or date of death due to disease. Kaplan-Meier survival plots for DFS and  
208 OS for up to 3-years follow-up time are plotted and survival probabilities are computed by  
209 Log-rank, Breslow and Tarone-Ware cores towards 3-year DFS and OS.

210 Distribution of response to NACT and breast cancer subtypes is tested using 2x4 Chi  
211 square contingency test. Box plot for sTILs distribution across response to NACT i.e. pCR  
212 and RD is plotted on GraphPad Prism v.5. Mean sTILs and SE for different response to  
213 NACT i.e. complete, partial, stable or progressive is computed and plotted by using  
214 GraphPad Prism v.5. Mean sTILs for different response to NACT across breast cancer  
215 subtypes is calculated and plotted using GraphPad Prism v.5.

216

217

218

## 219 **RESULTS**

### 220 **Breast Cancer Cohort Characteristics**

221 Pre-treatment primary tumor tissues were identified for 144 patients from the biobank as  
222 described in Figure 1. Demographic and clinical characteristics of the entire cohort and  
223 according to their molecular subtypes (TNBC and non-TNBC) are presented in Table 1.  
224 Average age of the cohort of 144 breast cancer patients is  $53 \pm 12$  years with a range  
225 from 28-86 years. TNBC patients (n=50) with mean age of 50, showed equal distribution  
226 within young (< 50 years) and late (> 50 years) age. ER+ve (n=55) and HER2+ve (n=39)  
227 patients presented higher mean age of 56 and 54 years with higher proportion (69% and  
228 64%; respectively) in late age category. 62% TNBC patients presented at  
229 postmenopausal age, and menopausal status is not significantly different across the  
230 subtypes. ER+ and HER2+ patients show significantly higher proportion of low grade  
231 (89% and 62%; respectively) tumours, while TNBC shows close to equal distribution  
232 within low and high tumor grade (45% and 55%). Other than grade, tumor size (cT, pT),  
233 lymph node status (cN, pN), lymph-vascular invasion (LVI) do not show significantly  
234 different distribution across all three subtypes. Overall survival and disease free survival  
235 data is available for 131 patients, with average follow-up of two years ranging from 0  
236 months to 14.3 years, and median follow-up of 1.7 years.

237 To assess tumor response to NACT, patients who received NACT prior to surgery are  
238 identified. Out of 144 patients, 35 (24%) had received neoadjuvant chemotherapy (NACT)  
239 according to their molecular subtypes as described in 'Methods' section. Of these 35, 8  
240 patients show complete pathological response (pCR) as assessed by ypT0ypN0 status.

## 241 **Stromal TILs Scores Distribution Across Clinical Parameters**

242 Stromal TILs (sTILs) distribution score is evaluated for each tissue sample from H&E  
243 stained histopathology slide. Table S1A depicts the distribution of sTILs percent  
244 distribution across clinical features of the cohort. Average sTILs scores show even  
245 distribution across age, menopausal status, and lymph node status. Tumor grade and  
246 tumor size (cT and pT) show significantly skewed sTILs distribution where higher grade  
247 and larger size tumors are associated with higher sTILs percentages<sup>26-28</sup>.

## 248 **Stromal TILs Scores and Co-relation with Molecular Subtypes**

249 sTILs scores are compared between TNBC, ER+ve and HER2+ve tumor tissue.  
250 Representative images of each histopathology sections for each subtype are shown in  
251 Figure 2A. TNBC tumors harbor wider range of sTILs scores (5 – 90%) as compared to  
252 other subtypes (0-60% and 0-70% for ER+ve and HER2+ve tumors) as shown in the box  
253 plot (Figure 1B). Mean sTILs score is significantly higher in TNBC ( $35.02 \pm 3.93$ , n=50)  
254 compared to ER+ve and HER2+ve tumors ( $11.02 \pm 1.49$ , n = 55 and  $21.64 \pm 3.17$ , n =  
255 39). sTILs scores are binned into three categories: Low (<10%), Moderate (10-40%) and  
256 High (> 40%) (Figure S1A) according to International TILs Working Group 2014 guidelines  
257 for TILs evaluation<sup>23</sup>. Binned scores also reflect significantly skewed distribution between  
258 TNBC and other two subtypes. Less than 5 and 10% of ER+ve and HER2+ve samples  
259 reflect high TILs scores while close to 40% of TNBC tumors harbor high TILs scores.  
260 (Figure S1B).

261 sTILs scores are compared between the subtypes according to their clinical parameters  
262 (Table 2). Older age (>50) TNBC tumors reflect significantly higher proportion of sTILs  
263 scores compared to ER2+patients;  $38.72 \pm 5.83$ , n=25 vs  $10.74 \pm 1.43$ , n=38 respectively  
264 (Table 2 and Figure 2A). As expected, post-menopausal TNBC patients show significantly  
265 higher proportion of sTILs scores as compared to ER2+ve patients;  $37.86 \pm 5.39$ , n=29 vs  
266  $10.08 \pm 1.42$ , n=36 respectively (Table 2 and Figure 2B). No significant difference was seen  
267 across mean sTILs between HER2+ve and TNBC patients. Overall distribution of sTILs  
268 through low and high grades across subtypes is significantly different with high grade  
269 TNBC tumors presenting with higher mean sTILs score;  $42.56 \pm 5.70$  (n=27), followed by  
270 high-grade HER2+ve patients;  $31.00 \pm 5.35$  (n=15) and ER+ve patients;  $17.50 \pm 3.59$  (n=6).  
271 (Figure 2C). Mean sTILs scores across clinical (cT) and pathological (pT) tumor size,  
272 lymph node (cN and pN) status showed higher scores for larger and lymph node negative  
273 tumors, specifically in TNBC as compared to non-TNBC subtypes (Figure 3D-G).  
274 Similarly, sTILs scores are significantly higher in LVI negative TNBC tumors as compared  
275 to ER+ve tumors ( $33.73 \pm 5.27$ , n=30 vs  $11.05 \pm 1.79$ , n=39) as represented in box graph  
276 (Figure 3H).

## 277 **sTILs Scores and response to NACT**

278 Out of 144 breast cancer patients, 35 patients received NACT. For 33 patients, pre and  
279 post-surgery records were available for cTcN and ypTypN data. ypT0ypN0 was taken as  
280 pathologically complete response (pCR). Out of 33, 8 patients show pCR post-NACT.  
281 Patients with complete response show wider range of sTILs scores compared to the rest  
282 who had residual disease (RD) post-NACT (n=25) (Figure 4A). For the patients with



283 residual disease, their response to NACT is further segregated into ‘partial response’  
284 when the tumor is down staged by therapy, ‘stable disease’ when no change in the stage  
285 occurred post-NACT, and progression in the stage after NACT is taken as ‘progressive  
286 disease’ (Table S2). When sTILs scores are compared for each of these categories,  
287 inverse pattern is observed with treatment response. Patients with complete pathological  
288 response had highest mean sTILs scores of  $30 \pm 33$  followed by partial response ( $22.90$   
289  $\pm 19.96$ ) and stable disease ( $14.36 \pm 15.60$ ), and progressive disease with the least sTILs  
290 score of 5% (Figure 4B). sTILs scores for TNBC patients show similar gradual reduction  
291 for patients showing complete response ( $36.67 \pm 36.01$ ), followed by partial response  
292 ( $25.80 \pm 26.23$ ), and goes lower for patients with stable disease ( $10.00 \pm 8.66$ ) (Figure  
293 4F).

294  
295 For the patients who received NACT, sTILs scores and response to NACT are further co-  
296 related across subtypes. TNBC patients who show complete pathological response had  
297 higher mean sTILs score (36.67%) compared to the rest (20%) (Fig 4E). Irrespective to  
298 the response to treatment, ER+ve and HER2+ve patients had lower mean sTILs scores  
299 (Figure 4C and 4D).

300

### 301 **sTILs Scores and Disease Outcome**

302 sTILs scores binned into three categories – low (<10%), moderate (10-40%) and high  
303 (>40%) are analyzed for association with the disease outcome using Kaplan Meier  
304 curves. The cohort shows no specific association of binned TILs scores with disease free  
305 survival (Figure 5A). When subtypes are segregated differing outcomes for disease free  
306 status with respect to binned sTILs scores is reflected depending on the subtype. High  
307 sTILs scores in TNBC tumors are associated with longer relapse free life as compared to  
308 low or moderate TILs scores, with hazard ratio of 0.49 by Cox regression (Figure 5D). On  
309 the other hand, high sTILs shows significantly poor survival in HER2+ve patients. (Figure  
310 5C), while ER+ve patients show similar trend as TNBC patients. For overall survival, the  
311 cohort presented with 3 deaths due to disease, and all of which harbored moderate sTILs  
312 scores (Figure 6).

313

314

315

## 316 **DISCUSSION**

317 This report is the first attempt to understand association of stromal TILs with  
318 clinicopathological features of breast cancer, their outcomes and response to therapy for  
319 an Indian cohort. The study is limited with a small cohort of 144 breast cancer patients,  
320 nevertheless the analysis confirms established association of sTILs with response to  
321 therapy and disease-free outcomes specifically in TNBC subtype. Further, this study  
322 brings forward significant co-relation of sTILs with clinicopathological features of TNBC  
323 subtype, perhaps specific to an Indian cohort.

324 The cohort of 144 breast cancer that contained 50 TNBC, 55 ER+ve and 39 HER2+ve  
325 patients reflected uniform distribution of clinicopathological parameters except for age  
326 and grade. TNBC presented with younger mean age as compared to non-TNBC and  
327 comprised of higher proportion (50%) of young age (<50 years) and pre-menopausal

328 patients, unique to an India Breast Cancer Cohort<sup>7,9</sup>. This is in contrast to the western  
329 cohorts where young age TNBCs present at 29-34%<sup>29,30</sup>. TNBC in our cohort also  
330 presented with higher proportion of lower grade tumors (45%) as compared to western  
331 cohorts (20.2%)<sup>31</sup>. For patients who received NACT (n=33), 42.9% of TNBC patients had  
332 complete pathological response to the therapy as opposed to 7% and 20% of ER+ and  
333 HER2+ cohort. This is in line with the current literature, where TNBCs indeed show better  
334 response to therapy<sup>3,13,14</sup>.

335 Stromal TILs scores in the cohort were uniformly distributed irrespective of the clinic-  
336 pathological parameters of the tumors, except for grade and tumor size. Higher grade  
337 and larger tumors showed significantly higher sTILs scores, as has been reported  
338 elsewhere<sup>27,32</sup>. Subtype wise comparison of sTILs scores co-related well with reported  
339 studies<sup>23</sup> and meta-analysis<sup>24</sup>, where TNBC subtype presented with wider sTILs scores  
340 distribution with a greater number of tumors with high sTILs scores (35%) as compared  
341 to ER+ and HER2+ subtypes (11% and 22% respectively). Within TNBC, higher sTILs  
342 scores co-related with better disease-free outcomes. With the limited number of patients  
343 that received NACT, broader and higher sTILs scores associated with complete  
344 pathological response. The gradual reduction in response to therapy with gradual  
345 decrease in sTILs scores was confined to TNBC subtype, similar to that has been  
346 reported in western population<sup>24</sup>. The trends observed in our study are in line with the  
347 established association of sTILs distribution and TNBC outcomes, although not  
348 significant. Non-significant distribution patterns observed could be due to small cohort  
349 size or may be specific to Indian context, something that needs to be explored with larger  
350 cohort of breast cancer patients from India.

351 Apart from validating established associations of sTILs with disease outcome and  
352 response to therapy, our study uncovers unique associations of sTILs scores with  
353 clinicopathological features specifically in TNBC subtype. Significantly higher sTILs  
354 scores were observed for old age, post-menopausal TNBC patients as compared to  
355 young, pre-menopausal TNBC patients. This is in contrast to earlier reports, where a  
356 meta-analysis of nine studies showed significantly lower sTILs scores for older age<sup>25</sup>.  
357 While in a cohort of 897 TNBC patients, no significant difference in sTILs scores was  
358 noted between old and young age TNBC patients<sup>33</sup>. It is known in the field that young age  
359 TNBC patients, although with aggressive disease show better response to therapy and  
360 higher rates of pCR than older age TNBC patients<sup>34,35</sup>. Whether, higher sTILs scores in  
361 older age, post-menopausal TNBC patients of our cohort translates into better response  
362 to therapy and better disease outcome for them needs to be further analysed with a larger  
363 cohort. Perhaps such association could possibly turn out to be specific to TNBC in an  
364 Indian context.

365 Further analysis for sTILs distribution will provide validation to establish TILs as a  
366 predictive tool to segregate old age post-menopausal TNBC patients who may benefit  
367 from NACT and young age, pre-menopausal TNBC patients with aggressive disease who  
368 are most likely to be non-responders to the therapy.

369 **REFERENCES:**

- 370 1. International Agency for Research on Cancer (IARC). GLOBOCAN 2018: Latest  
371 global cancer data. *CA Cancer J Clin.* 2018.
- 372 2. Wolff AC, Hammond MEH, Hicks DG, et al. Recommendations for human  
373 epidermal growth factor receptor 2 testing in breast. *J Clin Oncol.*  
374 2013;31(31):3997-4013. doi:10.1200/JCO.2013.50.9984
- 375 3. Liedtke C, Mazouni C, Hess KR, et al. Response to neoadjuvant therapy and  
376 long-term survival in patients with triple-negative breast cancer. *J Clin Oncol.*  
377 2008;26(8):1275-1281. doi:10.1200/JCO.2007.14.4147
- 378 4. Kassam F, Enright K, Dent R, et al. Survival outcomes for patients with metastatic  
379 triple-negative breast cancer: Implications for clinical practice and trial design. *Clin*  
380 *Breast Cancer.* 2009;9(1):29-33. doi:10.3816/CBC.2009.n.005
- 381 5. Bauer KR, Brown M, Cress RD, Parise CA, Caggiano V. Descriptive Analysis of  
382 Estrogen Receptor ( ER ) - and HER2-Negative Invasive Breast Cancer , the so-  
383 Called Triple-Negative Phenotype: A Population-Based Study from the California  
384 Cancer Registry. 2007;(March). doi:10.1002/cncr.22618
- 385 6. Lin NU, Vanderplas A, Hughes ME, et al. Clinicopathologic features, patterns of  
386 recurrence, and survival among women with triple-negative breast cancer in the  
387 National Comprehensive Cancer Network. *Cancer.* 2012;118(22):5463-5472.  
388 doi:10.1002/cncr.27581
- 389 7. Kulkarni A, Kelkar D., Parikh N, Shashidhara LS, Koppiker CB, Kulkarni M. Meta-  
390 analysis of prevalence of Triple Negative Breast Cancer and its clinical features at  
391 incidence in Indian Breast Cancer Patients. *JCO Glob Oncol.* 2020;In press.
- 392 8. Sandhu GS, Erqou S, Patterson H, Mathew A. Prevalence of Triple-Negative  
393 Breast Cancer in India: Systematic Review and Meta-Analysis. *J Glob Oncol.*  
394 2016;2(6):412-421. doi:10.1200/jgo.2016.005397
- 395 9. Thakur KK, Bordoloi D, Kunnumakkara AB. Alarming Burden of Triple-Negative  
396 Breast Cancer in India. *Clin Breast Cancer.* 2018;18(3):e393-e399.  
397 doi:10.1016/j.clbc.2017.07.013
- 398 10. Mehanna J, Haddad FGH, Eid R, Lambertini M, Kourie HR. Triple-negative breast  
399 cancer: Current perspective on the evolving therapeutic landscape. *Int J Womens*  
400 *Health.* 2019;11:431-437. doi:10.2147/IJWH.S178349
- 401 11. Cortazar P, Zhang L, Untch M, et al. Pathological complete response and long-  
402 term clinical benefit in breast cancer: The CTNeoBC pooled analysis. *Lancet.*  
403 2014;384(9938):164-172. doi:10.1016/S0140-6736(13)62422-8
- 404 12. Telli ML, Gradishar WJ, Ward JH. NCCN Guidelines Updates: Breast Cancer. *J*  
405 *Natl Compr Canc Netw.* 2019;17(55):552-555. doi:10.6004/jnccn.2019.5006
- 406 13. Von Minckwitz G, Untch M, Blohmer JU, et al. Definition and impact of pathologic  
407 complete response on prognosis after neoadjuvant chemotherapy in various  
408 intrinsic breast cancer subtypes. *J Clin Oncol.* 2012;30(15):1796-1804.  
409 doi:10.1200/JCO.2011.38.8595

- 410 14. Caparica R, Lambertini M, de Azambuja E. How I treat metastatic triple-negative  
411 breast cancer. *ESMO Open*. 2019;4(Suppl 2):e000504. doi:10.1136/esmoopen-  
412 2019-000504
- 413 15. Sharma P, Lopez-Tarruella S, García-Saenz JA, et al. Pathological Response and  
414 Survival in Triple-Negative Breast Cancer Following Neoadjuvant Carboplatin plus  
415 Docetaxel. *Clin Cancer Res*. 2018;24(23):5820-5829. doi:10.1158/1078-  
416 0432.CCR-18-0585
- 417 16. Symmans WF, Wei C, Gould R, et al. Long-Term Prognostic Risk After  
418 Neoadjuvant Chemotherapy Associated With Residual Cancer Burden and Breast  
419 Cancer Subtype. *J Clin Oncol*. 2017;35(10):1049-1060.  
420 doi:10.1200/JCO.2015.63.1010
- 421 17. Denkert C, Loibl S, Noske A, et al. Tumor-associated lymphocytes as an  
422 independent predictor of response to neoadjuvant chemotherapy in breast cancer.  
423 *J Clin Oncol*. 2010;28(1):105-113. doi:10.1200/JCO.2009.23.7370
- 424 18. Denkert C, Von Minckwitz G, Brase JC, et al. Tumor-infiltrating lymphocytes and  
425 response to neoadjuvant chemotherapy with or without carboplatin in human  
426 epidermal growth factor receptor 2-positive and triple-negative primary breast  
427 cancers. *J Clin Oncol*. 2015;33(9):983-991. doi:10.1200/JCO.2014.58.1967
- 428 19. Castaneda CA, Mittendorf E, Casavilca S, et al. Tumor infiltrating lymphocytes in  
429 triple negative breast cancer receiving neoadjuvant chemotherapy. *World J Clin*  
430 *Oncol*. 2016;7(5):387-394. doi:10.5306/wjco.v7.i5.387
- 431 20. Anichini A, Fossau G. Clonal analysis of the cytolytic T-cell response to human  
432 tumors. *Immunol Today*. 1987;8(No. 12):385-389. doi:10.1016/0167-  
433 5699(87)90215-5.
- 434 21. Naukkarinen A, Syrjänen KJ. Quantitative immunohistochemical analysis of  
435 mononuclear infiltrates in breast carcinomas—correlation with tumour  
436 differentiation. *J Pathol*. 1990;160:217-222. doi:10.1002/path.1711600307
- 437 22. Khoury T, Nagrale V, Opyrchal M, Peng X, Yao S. Prognostic Significance of  
438 Stromal Versus Intratumoral Infiltrating Lymphocytes in Different Subtypes of  
439 Breast Cancer Treated with Cytotoxic Neoadjuvant Chemotherapy. *Appl*  
440 *Immunohistochem Mol Morphol*. 2018;(716):1-20.  
441 doi:10.1097/PAI.0000000000000466.Prognostic
- 442 23. Salgado R, Denkert C, Demaria S, et al. The evaluation of tumor-infiltrating  
443 lymphocytes (TILs) in breast cancer: recommendations by an International TILs  
444 Working Group 2014. *Ann Oncol*. 2015;26(2):259-271.  
445 doi:10.1093/annonc/mdu450
- 446 24. Denkert C, von Minckwitz G, Darb-Esfahani S, et al. Tumour-infiltrating  
447 lymphocytes and prognosis in different subtypes of breast cancer: a pooled  
448 analysis of 3771 patients treated with neoadjuvant therapy. *Lancet Oncol*. 2018.  
449 doi:10.1016/S1470-2045(17)30904-X
- 450 25. Loi S, Drubay D, Adams S, Pruneri G, Francis PA. Tumor-Infiltrating  
451 Lymphocytes and Prognosis : A Pooled Individual Patient Analysis of Early-Stage

- 452 Triple-Negative Breast Cancers abstract. *Am J Clin Oncol*. 2019;37(7):559-570.  
453 doi:10.1200/JCO.18.01010
- 454 26. Miyoshi Y, Shien T, Ogiya A, et al. Associations in tumor infiltrating lymphocytes  
455 between clinicopathological factors and clinical outcomes in estrogen receptor-  
456 positive/human epidermal growth factor receptor type 2 negative breast cancer.  
457 *Oncol Lett*. 2019;17(2):2177-2186. doi:10.3892/ol.2018.9853
- 458 27. Kurozumi, Sasagu; Matsumoto, Hiroshi; Kurosumi, Masafumi; Inoue , Kenichi;  
459 Fujii, Takaaki; Horiguchi, Jun; Shirabe, Ken; Oyama, Tetsunari; Kuwano H.  
460 Prognostic significance of tumour-infiltrating lymphocytes for oestrogen receptor-  
461 negative breast cancer without lymph node metastasis. *Oncol Lett*.  
462 2019;17(3):2647-2656. doi:10.3892/ol.2019.9938
- 463 28. Sawe RT, Mining SK, Ofulla A V., et al. Tumor infiltrating leukocyte density is  
464 independent of tumor grade and molecular subtype in aggressive breast cancer of  
465 Western Kenya. *Trop Med Health*. 2017;45(1):1-11. doi:10.1186/s41182-017-  
466 0059-4
- 467 29. Tano S V., Kavanaugh MM, Peddi P, Mansour RP, Shi R, Burton G Von. Triple  
468 negative breast cancer (TNBC): Analysis of age and stage distribution and  
469 survival between African American and Caucasian women in a predominant low-  
470 income population. *J Clin Oncol*. 2017. doi:10.1200/jco.2017.35.15\_suppl.e12586
- 471 30. Howlader N, Cronin KA, Kurian AW, Andridge R. Differences in breast cancer  
472 survival by molecular subtypes in the United States. *Cancer Epidemiol*  
473 *Biomarkers Prev*. 2018;27(6):619-626. doi:10.1158/1055-9965.EPI-17-0627
- 474 31. Plasilova ML, Hayse B, Killelea BK, Horowitz NR, Chagpar AB, Lannin DR.  
475 Features of triple-negative breast cancer Analysis of 38,813 cases from the  
476 national cancer database. *Med (United States)*. 2016;95(35).  
477 doi:10.1097/MD.00000000000004614
- 478 32. Loi S, Drubay D, Adams S, et al. Tumor-infiltrating lymphocytes and prognosis: A  
479 pooled individual patient analysis of early-stage triple-negative breast cancers. *J*  
480 *Clin Oncol*. 2019. doi:10.1200/JCO.18.01010
- 481 33. Pruneri G, Vingiani A, Bagnardi V, et al. Clinical validity of tumor-infiltrating  
482 lymphocytes analysis in patients with triple-negative breast cancer. *Ann Oncol*.  
483 2016;27(2):249-256. doi:10.1093/annonc/mdv571
- 484 34. Loibl S, Jackisch C, Lederer B, et al. Outcome after neoadjuvant chemotherapy in  
485 young breast cancer patients : a pooled analysis of individual patient data from  
486 eight prospectively randomized controlled trials. *Breast Cancer Res Treat*.  
487 2015;152(2):377-387. doi:10.1007/s10549-015-3479-z
- 488 35. Waldenfels G Von, Loibl S, Furlanetto J, et al. Outcome after neoadjuvant  
489 chemotherapy in elderly breast cancer patients – a pooled analysis of individual  
490 patient data from eight prospectively randomized controlled trials. *Oncotarget*.  
491 2018;9(20):15168-15179. doi:10.18632/oncotarget.24586
- 492



## 493 **Figure Legends**

494

### 495 **Figure 1: Flow chart to explain selection of primary breast cancer tissue.**

496 Primary tumor tissue selection from retrospectively (2010-March 2019) collected PCCM  
497 biobank. Out of 653 patients breast tissues deposited with patient consent at PCCM  
498 biobank, 233 were of primary tumor (172 biopsy tissue and 61 naïve surgery tissue). Out  
499 of these, molecular subtypes were assigned for 185 for whom IHC reports were available.  
500 Out of 185, 144 tissue samples with good tissue integrity were sectioned, stained with  
501 H&E and then scored for stromal tumor infiltrating lymphocytes following International  
502 TILs working group guidelines.

503

### 504 **Table 1: Demographic and clinical features of breast cancer patient cohort.**

505 Number of patients with breast cancer were grouped into , ER+/PR+/PR-/HER2- , HER2+  
506 and TNBC. The number of patients are listed according to the clinical variables reported  
507 at the time of diagnosis as per both the subtypes. Clinical parameters such as age at  
508 diagnosis, menopausal status, tumour grade and radiological tumor size, lymph node  
509 positivity and LVI are listed. For patients who did not receive NACT/NAHT, pT and pN  
510 retrieved from the surgery pathology report are noted. For patients who received  
511 NACT/NAHT, pathological response to the therapy is noted based on their ypTN status.  
512 Total number of patients with follow-up and time to follow-up and follow-up status are also  
513 noted. Any skewed distribution of clinical parameters in the cohort was tested using the  
514 2\*3 (4\*3 in case of tumor size)  $\chi^2$  contingency test with GraphPad Prism v.5. Red font  
515 indicates significant p-values

516 \*For comparing mean age differences among the subtypes, 1-way ANOVA was used.

517 LVI- lympho-vascular invasion, Neo-adjuvant chemotherapy (NACT), pCR- pathological  
518 complete response.

### 519 **Figure 2: sTILs distribution across all three subtypes tumor tissue.**

520 **A.** Images depicting stromal TILs distribution. Representative images of sTILs scores for  
521 ER+(left panel), HER2+(middle panel) & TNBC (right panel). Percent sTILs score for each  
522 of the tissue is mentioned on the figure. Blue lines are the scale bars representing 200um.

523 **B.** Box plot shows distribution of sTILs scores across ER+, HER2+ and TNBC tumor  
524 tissue. The horizontal line represents median. Error bars represent Tukey's whiskers. The  
525 actual number of patient samples (n) are shown in the box plot. The distribution of the  
526 sTILs scores between tissue samples across each subtype was tested for statistical  
527 significance with Student's t-test, using GraphPad Prism v.5. \* represents p-value <0.05,  
528 \*\* represents p-value <0.01, and \*\*\* represents p-value <0.0001.

### 529 **Table 2: Mean sTILs scores with respect to clinicopathological features of breast** 530 **cancer subtypes.**

531 Mean  $\pm$  S.E sTILs scores across clinicopathological parameters including age at  
532 diagnosis, menopausal status of patients, tumor grade, radiological and pathological  
533 tumor size and lymph node status and LVI according to the molecular subtypes are  
534 presented.



535 The statistical analysis was done in GraphPad Prism v.5. One-way ANOVA was  
536 performed to compute significant difference in mean sTILs scores between breast  
537 cancer subtypes and for comparing mean sTILs scores across each category and  
538 subtypes.

539 Red font indicates significant p-values.

540 \*LVI- lympho-vascular invasion

541 **Figure 3. sTILs distribution across clinico-pathological parameters with respect to**  
542 **subtypes.**

543 Box plots depicting mean sTILs scores for ER+, HER2+ and TNBC tumor tissue across  
544 **A.** early & late age, **B.** pre & post-menopausal status, **C.** low (I/II) and high (III) grade  
545 tumors, **D.** clinical tumor size; T1 and T2, **E.** clinical lymph-node status – positive and  
546 negative, **F.** pathological tumor size; T1 and T2, **G.** pathological lymph-node status –  
547 positive and negative, **H.** LVI status - positive & negative. The number of tissue samples  
548 (n) are shown on top of each bar. Error bars represent Tukey's whiskers.

549 Unpaired t-test was performed to test for significance across each parameter between  
550 individual subtypes. Only grade shows significant differences across all three subtypes,  
551 which is represented here. p-value <0.05 is represented with '\*', <0.01 with '\*\*' and,  
552 <0.0001 with '\*\*\*'. ns= non-significant. GraphPad Prism v.5 was used for the graphs and  
553 ANOVA test.

554 **Figure 4: Mean sTILs scores and its association with response to NACT.**

555 **A.** sTILs score distribution is plotted for patients who showed complete pathological  
556 response (pCR) or had residual disease (RD) post-NACT. Box plots with horizontal lines  
557 show median sTILs score and The horizontal line represents, and error bars represent  
558 Tukey's whiskers. Mean sTILs across both groups are not significantly different as tested  
559 by two-tailed unpaired t-test. **B.** Box plot representing mean sTILS score for all the  
560 patients that received NACT and showed either complete or partial pathological response  
561 or had a stable or progressive disease at the time of surgery. Error bars represent Tukey's  
562 whiskers. **C.** Mean sTILs scores for ER+ patients who had pCR or residual disease (RD).  
563 No statistics could be computed. Error bars represent Tukey's whiskers. **D.** Mean sTILs  
564 scores for HER+ patients who had pCR or residual disease (RD). No statistics could be  
565 computed. Error bars represent Tukey's whiskers. **E.** Mean sTILs scores for TNBC  
566 patients who had pCR or residual disease (RD). Unpaired t-test was run for sTILs score  
567 across pCR and RD. Error bars represent Tukey's whiskers. **F.** Box plot representing  
568 mean sTILS score only for TNBC patients that received NACT and showed either  
569 complete or partial pathological response or had a stable or progressive disease at the  
570 time of surgery. Error bars represent Tukey's whiskers.

571 \*pCR-pathological complete response, RD-Residual disease

572 **Figure 5: Three year disease-free survival with respect to binned sTILs scores.**

573 Disease free survival was calculated as number of months from the date of surgery till the  
574 recurrence diagnosis date or last follow-up date. The cut-off for DFS calculation was taken

575 at 3- years and calculated for a total of 131 patients. Kaplan-Meier survival plots for  
576 disease-free survival (DFS) according to low, moderate & high sTILs score bins for A. the  
577 entire cohort, B. ER+ patients and C. HER2+ patients and D. TNBC patients. In the graph,  
578 X-axis represents time scale in months, Y-axis represents the survival probability. Blue-  
579 lines indicate patients with low sTILs score, red-line indicates patients with moderate  
580 score & green indicates high sTILs scores. Each drop shown as vertical line represents  
581 an event i.e. local or distant recurrence. Survival probability with respect to sTILs binned  
582 scores is tested using IBM SPSS Statistics v. 21.0.0.0.

583 **Figure 6: Three year overall survival with respect to binned sTILs scores.**

584 Overall survival was calculated as number of months from the date of biopsy till the last  
585 follow-up date. The cut-off for OS calculation was taken at 3- years and calculated for a  
586 total of 137 patients. Kaplan-meier survival plots showing overall survival (OS) of patients  
587 according to low, moderate & high sTILs score bins for A. the entire cohort and B. ER+  
588 patients and C. TNBC patients. In the graph, X-axis represents time scale in months, Y-  
589 axis represents the survival probability. Blue-line indicates patients with low sTILs score,  
590 red-line indicates patients with moderate score & green indicates high sTILs scores. Each  
591 drop shown as vertical line represents an event i.e. death due to disease. Survival  
592 probability for each factor is tested by using IBM SPSS Statistics v. 21.0.0.0.

593 **Supplementary Legends:**

594

595 **Table S1: Mean sTILs scores with respect to clinical features of the cohort.**

596 Mean  $\pm$  S.E of sTILs scores across clinicopathological parameters including age at  
597 diagnosis, menopausal status of patients, tumor grade, radiological tumor size and lymph  
598 node status and LVI. For comparing mean TILs score differences across each parameter  
599 two-tailed, unpaired t-test was performed on GraphPad Prism v.5.

600 #Red font indicates significant p-values.

601 \* LVI- lympho-vascular invasion

602

603 **Figure S1: Binned sTILs distribution across all breast cancer subtypes tumor  
604 tissue.**

605 **A.** Representative images depicting stromal TILs distribution in tumor. Images of binned  
606 TILs scores are presented here for non-TNBC (left panel) & TNBC (right panel).  
607 Representative images of Low (<10%), Moderate (10%-39%) and High (>40%) sTILs  
608 scores as imaged on OptraScan at 10X magnification and processed using ImageViewer  
609 2.0.4. Blue lines are the scale bars representing 200um.

610 **B.** Bar graph demonstrating percent frequency across binned categories of sTILs scores  
611 in ER+, HER2+ and TNBC subtypes. The number of patients in each bin (n) are shown  
612 on top of the bars. Association of categorical sTILs variable (Low, Moderate and High)  
613 across breast cancer subtypes was tested for significance by 3\*3  $\chi^2$  test using GraphPad  
614 Prism v.5.

615

616 **Table S2: Response to NACT across breast cancer subtypes.**

617 Number of patients treated with NACT and their response to NACT is recorded as  
618 complete, partial, no response as in stable disease or progressive disease. Number of  
619 patients in each response category for ER+, HER2+ and TNBC are given in the table.  
620 The distribution across subtypes for pCR status was tested using  $\chi^2$  test and was found  
621 to be non-significant.

622

Figure 1: Flow chart to explain selection of primary breast cancer tissue

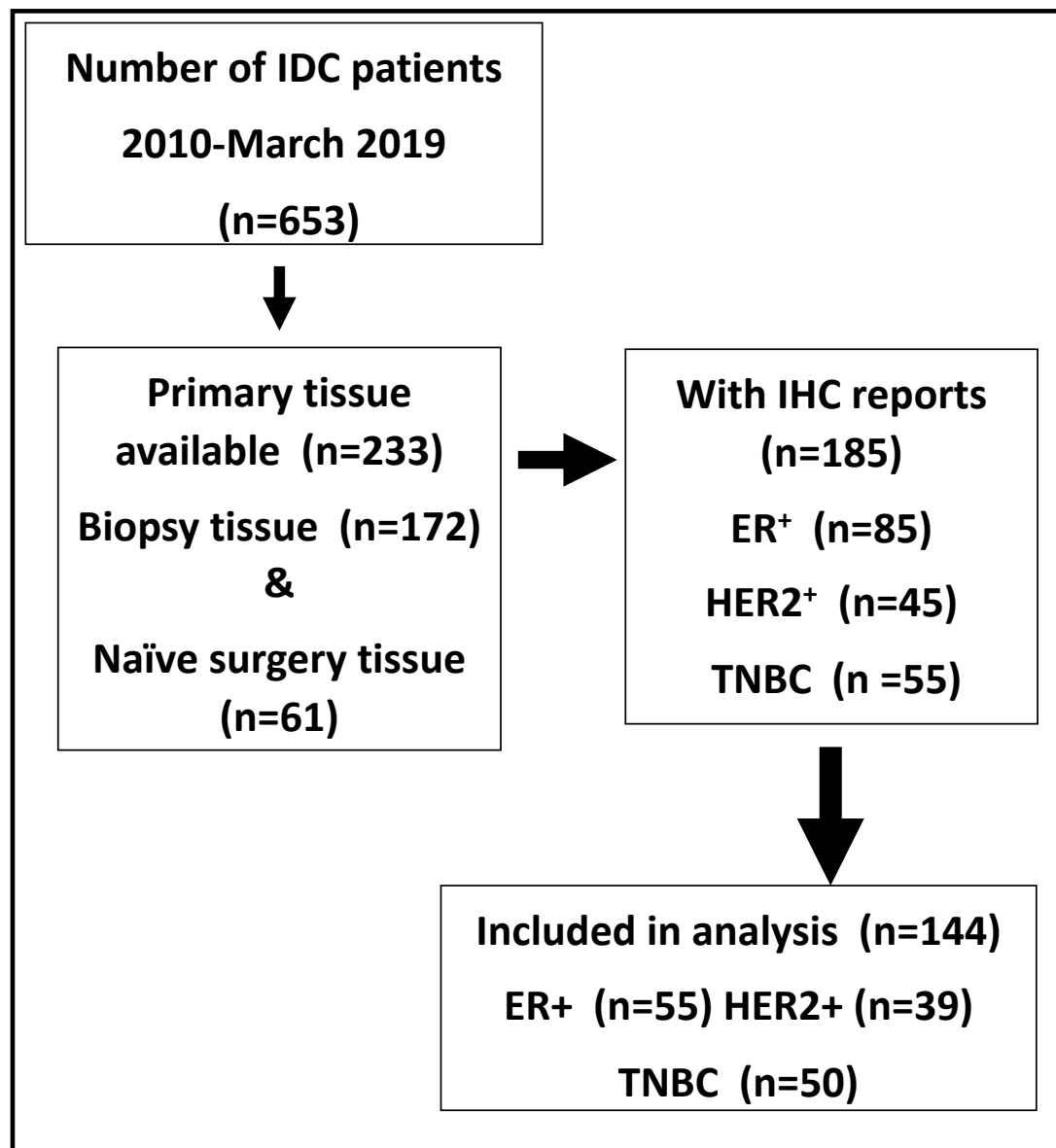


Table 1: Demographic and clinical features of breast cancer patient cohort

		<b>BC</b>	<b>ER+</b>	<b>HER2+</b>	<b>TNBC</b>	<b>p-values</b>
<b>No. of patients</b>		<b>144</b>	<b>55</b>	<b>39</b>	<b>50</b>	
<b>Age</b> (n=144)	(Mean ± S.D)	53.4 ± 12.3	55.9 ± 12.4	54.2 ± 11.6	50.0 ± 12.2	<b>*0.0455</b>
	Early (>50)	56	17(30.9%)	14(35.9%)	25(50%)	0.1214
	Late (≤ 50)	88	38(69.1%)	25(64.1%)	25(50%)	
<b>Menopausal status</b> (n=129)	pre	35	9(20%)	8(21.6%)	18(38.3%)	0.0958
	post	94	36(80%)	29(78.4%)	29(61.7%)	
<b>Grade</b> (n=140)	Low (I/II)	92	46(88.5%)	24(61.5%)	22(44.9%)	<b>&lt; 0.0001</b>
	High (III)	48	6(11.5%)	15(38.5%)	27(55.1%)	
<b>Tumor size</b> (cT) (n=134)	T1	35	21(40.4%)	7(19.4%)	7(15.2%)	0.054
	T2	93	28(53.9%)	28(77.8%)	37(80.4%)	
	T3	4	2(3.8%)	0(0%)	2(4.4%)	
	T4	2	1(1.9%)	1(2.8%)	0(0%)	
<b>LN status</b> (cN) (n=129)	negative	59	25(53.2%)	14(38.9%)	20(43.5%)	0.4011
	positive	70	22(46.8%)	22(61.1%)	26(56.5%)	
<b>pT (primary tissue, no NACT)</b> (n=95)	T0	5	3(9.7%)	0(0%)	2(6.1%)	0.3852
	T1	17	8(25.8%)	4(12.9%)	5(15.1%)	
	T2	68	18(58.1%)	26(83.9%)	24(72.7%)	
	T3	4	1(3.2%)	1(3.2%)	2(6.1%)	
	T4	1	1(3.2%)	0(0%)	0(0%)	
<b>pN (primary tissue, no NACT)</b> (n=95)	negative	65	23(74.2%)	19(61.3%)	23(69.7%)	0.54
	positive	30	8(25.8%)	12(38.7%)	10(30.3%)	
<b>LVI</b> (n=130)	negative	95	39(76.5%)	26(70.3%)	30(71.4%)	0.777
	positive	35	12(23.5%)	11(29.7%)	12(28.6%)	
<b>NACT</b> (n=141)	No	106	37(71.2%)	33(84.6%)	36(72%)	
	Yes	35	15(28.8%)	6(15.4%)	14(28%)	
<b>PCR status after NACT</b> (n=33)	Complete	8	1(7.1%)	1(20%)	6(42.9%)	0.0855
	No response	25	13(92.9%)	4(80%)	8(57.1%)	
<b>Survival outcomes</b>	No. followed-up	131	46	36	49	
	Time in Months Mean(range)	25(0-172)	20(0-84)	28(0-172)	28(1-132)	
	Median months	19	12	26	20	
	# Recurred (local, distant)	11	3	2	6	
	# Death due to disease	3	0	0	3	

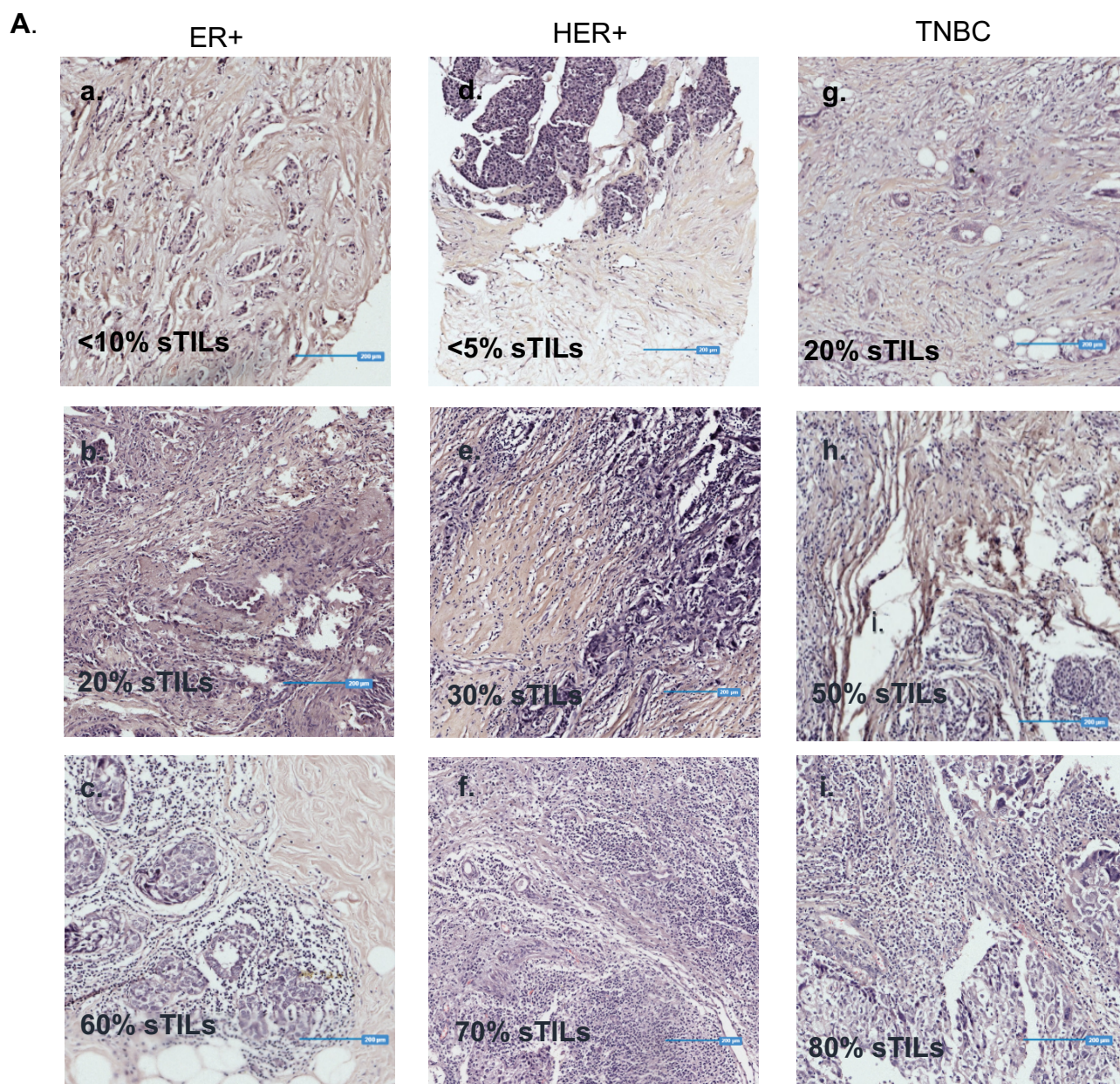
Table S1: Mean sTILs scores with respect to clinical parameters of the cohort

		<b>Average sTILs score Mean ± S.E</b>	<b>p-values</b>
<b>No. Of patients</b>	(n=144)	22.23 ± 1.90	
<b>Age (n=144)</b>	Early (<50) (n=56)	22.52 ± 3.00	0.9041
	Late (≥ 50) (n=88)	22.05 ± 2.46	
<b>Menopausal status (n=129)</b>	Pre (n=35)	21.80 ± 3.93)	0.8275
	Post (n=94)	22.82 ± 2.44	
<b>Grade (n=140)</b>	I/II (n=92)	15.46 ± 1.812	<b>&lt; 0.0001</b>
	III (n=48)	35.81 ± 3.814	
<b>Tumor size (cT) (n=128)</b>	T1 (n=35)	15.11 ± 2.34	<b>0.0244</b>
	T2 (n=93)	25.39 ± 2.62	
<b>LN status(cN) (n=129)</b>	Positive (n=70)	24.84 ± 3.10	0.9681
	Negative (n=59)	22.22 ± 3.20	
<b>LVI (n=123)</b>	Positive (n=28)	24.54 ± 4.32	0.4388
	Negative (n=95)	20.76 ± 2.31	
<b>Tumor size (pT) (n=85)</b>	T1 (n=17)	17.29 ± 4.86	0.3004
	T2 (n=68)	23.76 ± 2.85	
<b>LN status(pN) (n=95)</b>	Positive (n=30)	22.70 ± 3.92	0.908
	Negative (n=65)	23.29 ± 2.96	

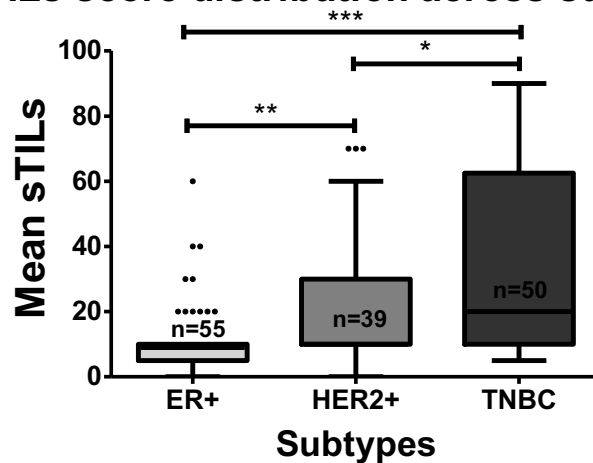


626

Figure 2: sTILs distribution across all three subtypes tumor tissue.



**B.** TILs score distribution across subtypes





627 Figure S1: Binned sTILs distribution across all breast cancer subtypes tumor tissue.

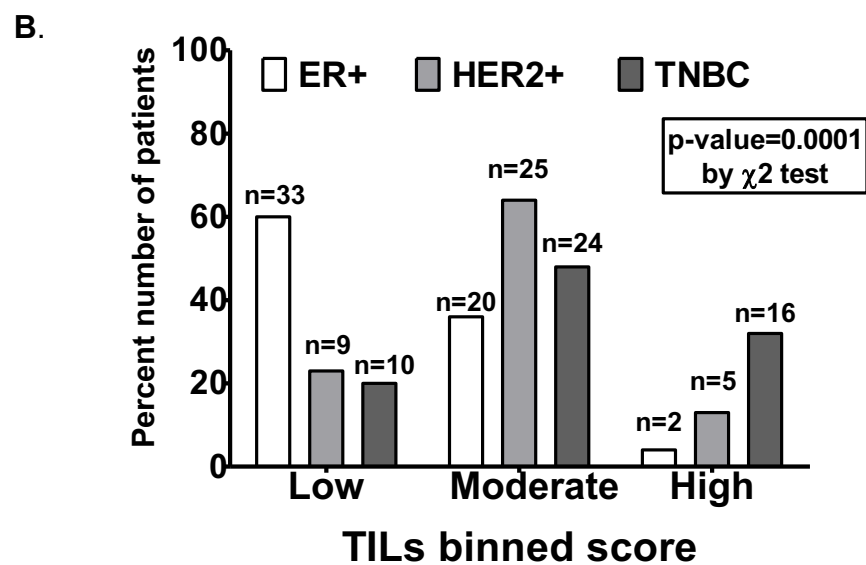
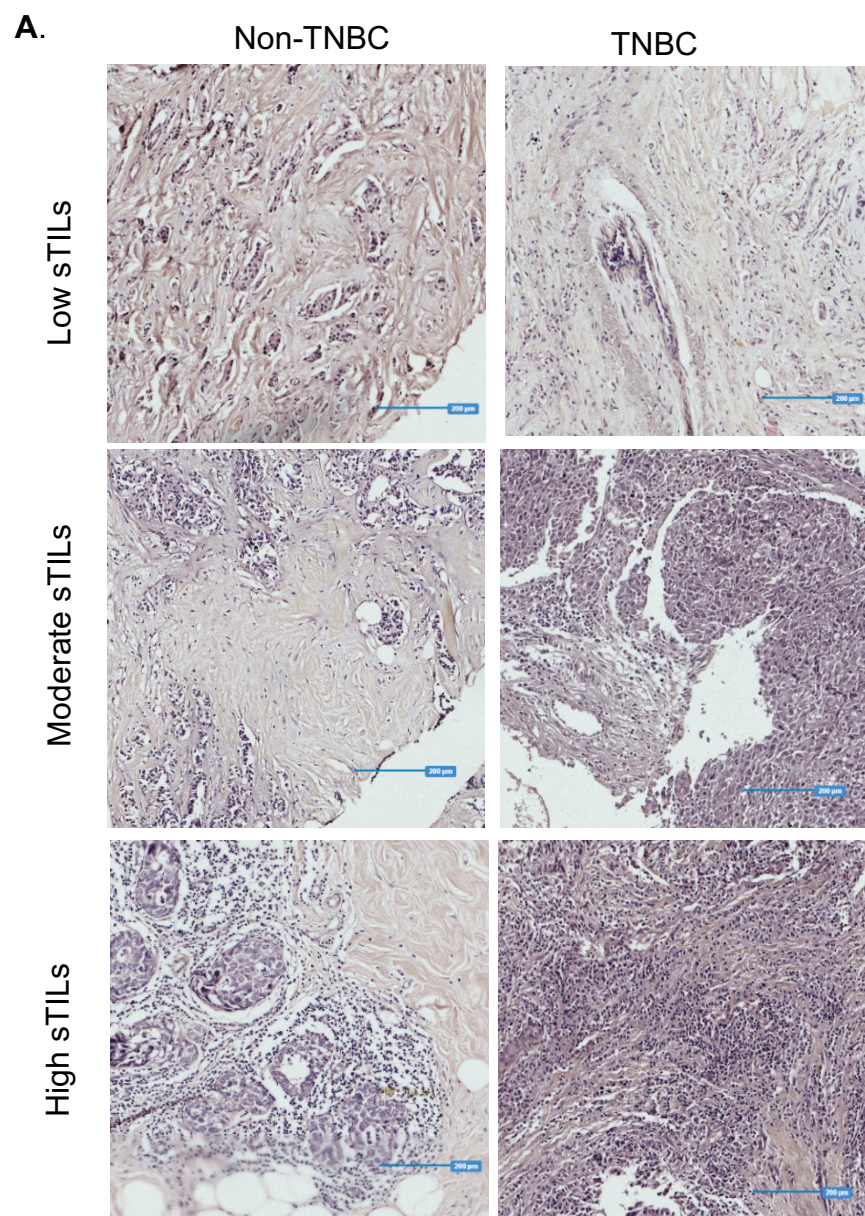
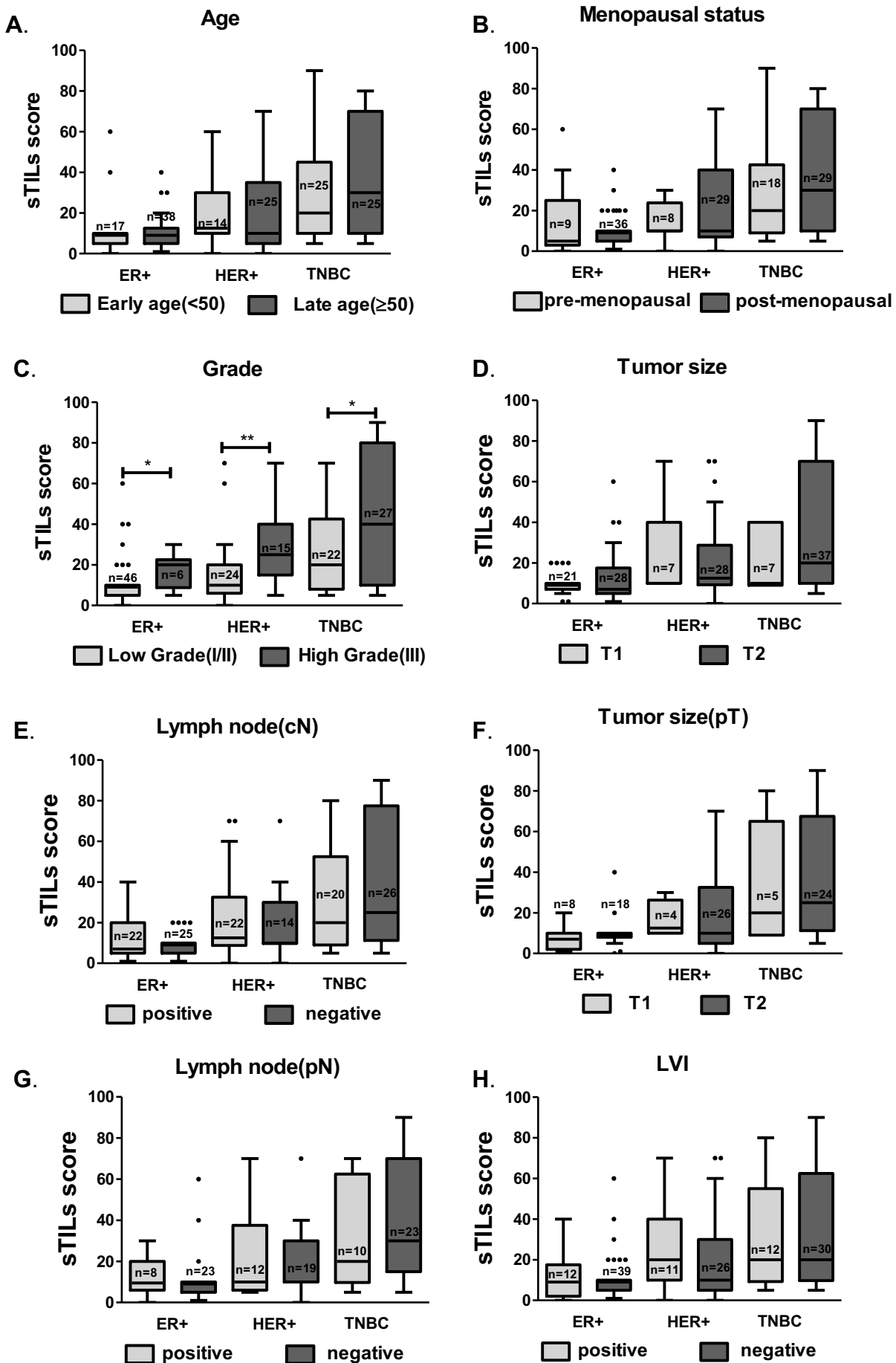


Figure 3: sTILs mean scores compared across molecular subtypes



629 Table S2: Response to NACT across breast cancer subtypes

		<b>Total</b>	<b>ER+</b>	<b>HER2+</b>	<b>TNBC</b>	<b><i>p</i>- values</b>
<b>Pos-NACT response (n=33)</b>	Complete	8	1	1	6	0.3552
	Partial	16	9	2	5	
	Stable disease	8	3	2	3	
	Progressive disease	1	1	0	0	

630

Figure 4: Mean sTILs scores and its association with response to NACT

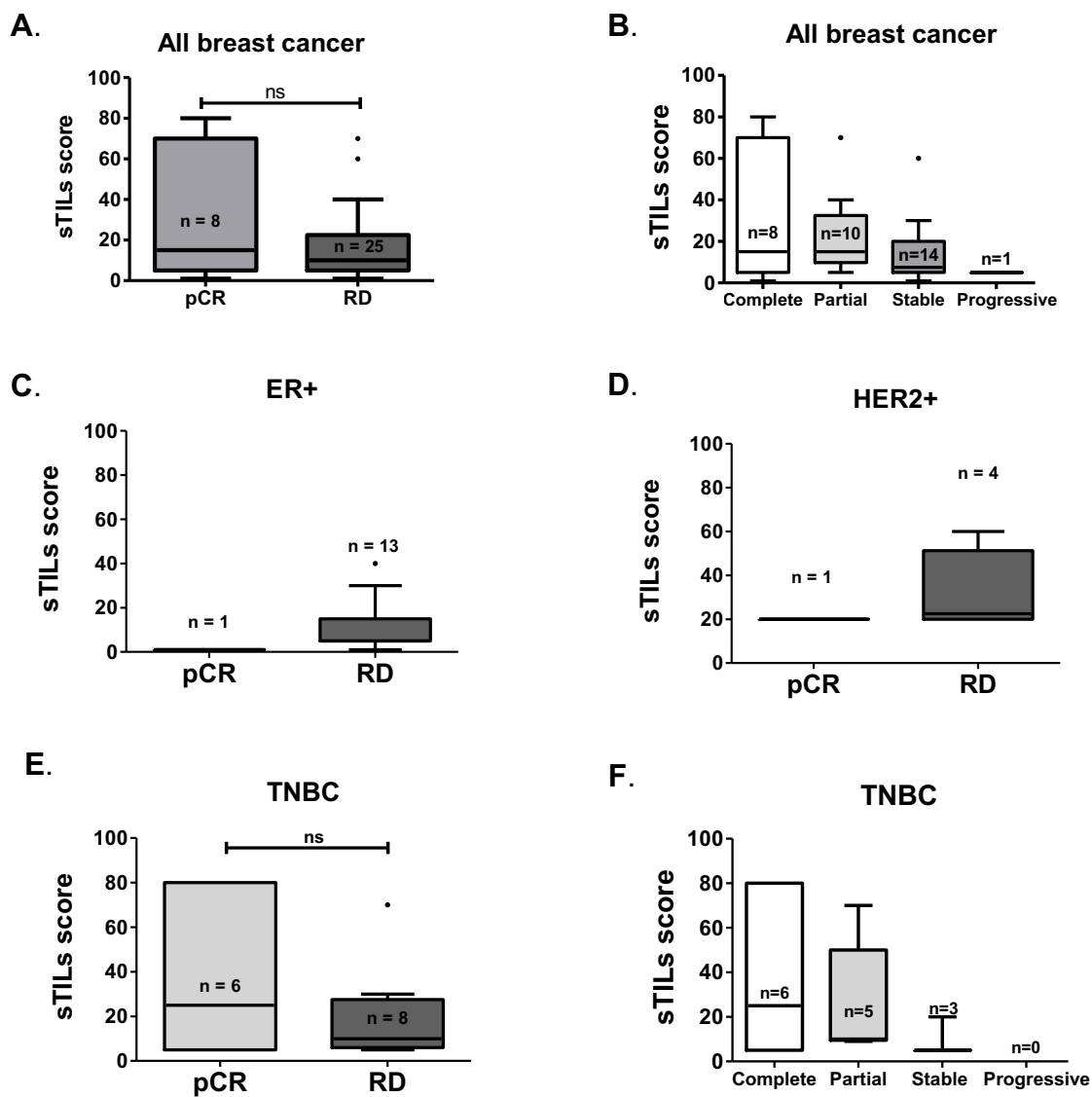


Figure 5: Disease-free survival according to sTILs scores.

631

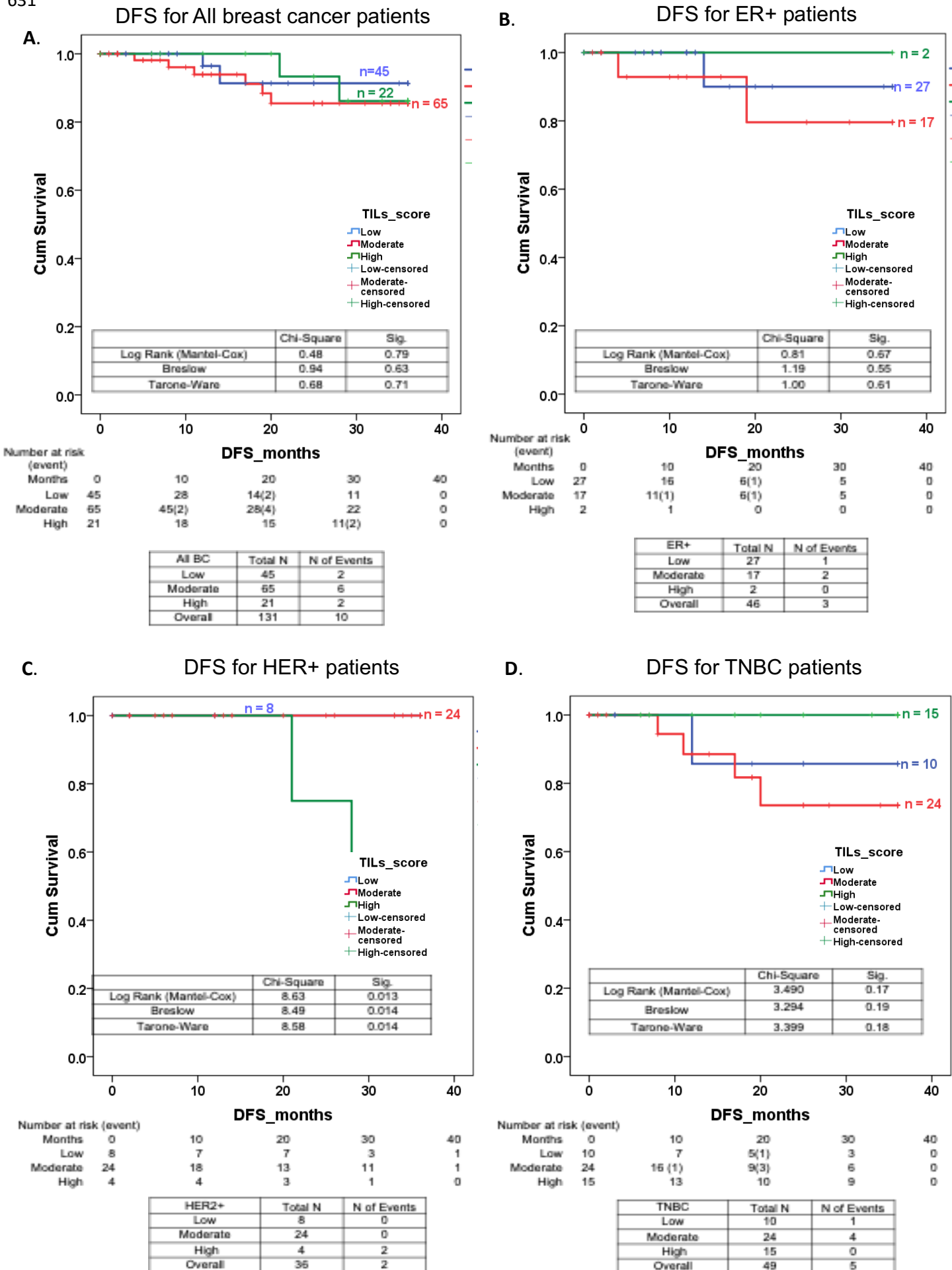




Figure 6: Overall survival according to sTILs scores.

632

