

1 **Mechanisms and kinetics of bacterial clearance after experimental** 2 **colonisation in adults with asthma**

3 *Seher Raza Zaidi MRCP^{1,2}, *Simon P. Jochems PhD^{1,3}, *Jesús Reiné PhD¹, Sherin Pojar MSc^{1#},
4 Elissavet Nikolaou PhD^{1#}, Elena Mitsi PhD¹, Esther L. German¹ Angela D. Hyder-Wright MSc
5 ^{1,2,4}, Hugh Adler PhD^{1,2}, Helen Hill PhD^{1,2}, Caroline Hales PhD^{1,2}, Victoria Connor MD^{1,2}, Carla
6 Solórzano PhD¹, Stephen B. Gordon PhD^{1,4,5}, John Blakey PhD⁶ , David Goldblatt PhD⁷,
7 ^Daniela M. Ferreira PhD¹ , ^Jamie Rylance PhD^{1,5}

8 *Joint first authors

9 ^Joint senior authors

10 #Contributed equally

11 1. Liverpool School of Tropical Medicine

12 Pembroke Place

13 Liverpool

14 L3 5QA

15 2. The Royal Liverpool University Hospital

16 Prescott Street

17 Liverpool

18 L7 8XP

NOTE: This preprint reports new research that has not been certified by peer review and should not be used to guide clinical practice.

38 Clinical Sciences Department

39 Liverpool School of Tropical Medicine

40 Pembroke Place

41 Liverpool

42 L3 5QA Phone: 0151 705 3711

43 Daniela.ferreira@lstmed.ac.uk

44

45

46 Author Contributions

47 SZ Study design, Manuscript writing and drafting, data analysis and interpretation, performing
48 procedures and recruitment

49 SJ Study design, manuscript writing and drafting, sample processing, data analysis and
50 interpretation

51 JRe Manuscript writing and drafting, sample processing, data analysis

52 SP Manuscript writing and drafting, sample processing

53 EN Manuscript writing and drafting, sample processing

54 EM Manuscript writing and drafting, sample processing

55 EG Manuscript writing and drafting, sample processing

56 AW Manuscript writing and drafting and assisting in procedures

57 HA Manuscript writing and drafting, recruitment

58 HH Manuscript writing and drafting, recruitment

59 CH Manuscript writing and drafting, recruitment

60 VC Manuscript writing and drafting, recruitment

61 CS Manuscript writing and drafting, sample processing

62 SG Study design, funding, manuscript writing and drafting

63 JB Study design, manuscript writing and drafting

64 DG Data analysis and interpretation

65 DF Study design, funding, manuscript writing and drafting, data analysis and interpretation

66 JR Study design, manuscript writing and drafting, performed procedures

67 **Funding:**

68 The project was funded by MRC programme grant (MR/M011569/1) to SG, and Bill and
69 Melinda Gates Foundation (grant OPP1117728). Flow cytometric acquisition was performed
70 on a BD LSR II cytometer funded by a Wellcome Trust Multi-User Equipment Grant
71 (104936/Z/14/Z).

72 **Conflict of Interest:**

73 The authors of this study do not have any disclosures or conflict of interests to declare

74

75 **Word Count:**

76 2319

77

78 **Abstract**

79 Background

80 Pneumococcal pneumonia is a leading cause of death, particularly affecting those with
81 chronic respiratory disease. Observational studies suggest increased nasopharyngeal
82 colonisation rates with *S.pneumoniae* in asthma, and lower specific antibody levels.

83 Objectives

84 Using experimental human pneumococcal challenge, we examined the acquisition and
85 kinetics of nasopharyngeal colonisation of *Streptococcus pneumoniae* serotype 6B. We also
86 aimed to dissect associated mucosal and systemic immune responses and immunizing effect
87 of carriage.

88 Methods

89 Fifty participants with asthma well-controlled on moderate inhaled corticosteroid doses were
90 challenged with pneumococcus, and a subset of colonized individuals were re-challenged 6-
91 11 months later with the same pneumococcal isolate . Colonisation rates (from nasal wash),
92 systemic antibody levels and mucosal cellular and cytokine responses were compared to 151
93 healthy controls.

94 Measurements and Main Results

95 Colonisation rates were 28/50 (56%) and 68/151 (45%) in those with asthma and controls
96 respectively, $p=0.17$. Duration of colonisation was shorter in people with asthma (median 14
97 days vs 29 days, $p=0.03$) but of similar density. Body mass index was higher in colonised
98 compared with non-colonised asthma individuals (median 24.7 [IQR 24.1-29.0] and 23.5
99 [20.1-26.4] respectively, $p=0.019$). Despite an increase in pneumococcal capsular and protein

100 antibodies after colonisation, 4/12 asthmatic individuals became colonised again upon re-
101 challenge. Nasal neutrophil and T cell levels, in particular mucosa associated invariant T
102 (MAIT) cells were decreased in people with asthma compared to healthy controls (median
103 9.4, [IQR 5.0-13.3 %] of CD8⁺ T cells) vs median 15.8, [IQR 9.9-25.9 %] of CD8⁺ T cells
104 respectively ($p=0.0047$). Most nasal cytokines were also reduced in asthmatics. In both
105 groups, colonisation led to recruitment of monocytes and granulocytes to the nasal mucosa.

106 Conclusions:

107 Nasopharyngeal colonisation was of shorter duration in those with asthma compared to
108 controls, although acquisition rates were not different. Rates of colonisation were higher with
109 increasing BMI in individuals with asthma. Despite a baseline reduction in mucosal immune
110 cells and cytokines in asthmatics with corticosteroids, colonisation led to cellular recruitment
111 in both groups. Colonisation was not associated with protection from homologous re-
112 challenge in individuals with asthma, in contrast to healthy volunteers.

113 Clinical Implication: (single sentence)

114 People with asthma on inhaled corticosteroids have an increased likelihood of pneumococcal
115 infection secondary to reduced mucosal immune responses from nasopharyngeal
116 colonisation and a lack of protection from re-exposure.

117 Abstract word count: 250

118 **Key Messages:**

- 119 • Duration of experimental pneumococcal colonisation is reduced in asthma

- 120 • A high BMI increases the likelihood of experimental pneumococcal colonisation in
121 asthma
- 122 • Rate and density of pneumococcal colonisation is similar in people with asthma
123 compared to healthy controls
- 124 • Pneumococcal colonisation does not confer protection against re-challenge in asthma,
125 despite boosting antibody titres against pneumococcal proteins and capsule
- 126 • Mucosal immune cells and cytokine levels are reduced in asthmatic individuals with
127 inhaled corticosteroids compared to healthy controls.
- 128 • There is recruitment of monocytes into the nasal mucosa following colonisation in
129 people with asthma, with reduced nasal neutrophils and T cells, specifically Mucosal
130 Associated Invariant T (MAIT) cells, in comparison to healthy controls.

131

132 **Capsule Summary:**

133 Epidemiological studies show that people with asthma are more likely to have nasal
134 colonisation with *S. pneumoniae*, which may proceed to infection such as pneumonia and
135 invasive pneumococcal disease. This study investigates the mechanisms underlying
136 pneumococcal colonisation and its effect on subsequent pneumococcal encounters.

137 **Key words:**

138 Asthma, immunology, mucosal immune response, obesity, experimental nasopharyngeal
139 pneumococcal colonisation, BMI

140 **Abbreviations:**

141 ACT score – Asthma Control Test

142 BDP – BudesonidePropionate Equivalent

143 BMI – Body Mass Index

144 CFU; colony forming unit

145 EHPC – Experimental human pneumococcal challenge

146 FEV₂; Forced expiratory volume second

147 FeNO – fractional Exhaled Nitric Oxide

148 ICS; Inhaled corticosteroids

149 IQR; inter quartil range

150 MAIT – mucosa associated invariant T cells

151 MSD- Meso Scale Discovery

152 PBMC, Peripheral blood mononuclear cells

153 PEFr; Peak expiratory flow rate

154

155 Introduction

156 *Streptococcus pneumoniae* is the most common cause of bacterial pneumonia. Large scale
157 real-world observational data shows people with asthma on inhaled corticosteroids (ICS) are
158 at increased risk of pneumonia in a dose-dependent manner ¹⁻³, though this relationship was
159 not observed in manufacturers' retrospective analysis of randomised clinical trials.
160 Epidemiologically, asthma is associated with an increased prevalence of nasopharyngeal
161 colonisation by *S. pneumoniae* ⁴⁻⁷, although information on density and duration are lacking.
162 An Italian cross-sectional study reported a 45% colonisation rate in children and adolescents
163 with asthma ⁴ and nasopharyngeal swabs from Finnish army recruits identified those with
164 asthma twice likely to be colonised with *S.pneumoniae* ⁸. Mucosal cellular mechanisms are
165 important for clearance of nasopharyngeal colonisation of *S. pneumoniae* ⁹, and an
166 impairment of these may lead to increased colonisation and perhaps acute infection such as
167 pneumonia and invasive pneumococcal disease ¹⁰. Airway inflammation in asthma, and ICS
168 therapy, alter mucosal immune responses ¹¹⁻¹³. Routine immunisation against pneumococcus
169 is offered to people with chronic respiratory disease and those deemed immune
170 compromised secondary to treatment with oral corticosteroids in the United Kingdom and
171 United States ^{1, 4, 5}.

172 We hypothesise that the immunological containment of pneumococcal colonisation is altered
173 in asthma due to the condition itself, or secondary to ICS and that altered mucosal dynamics
174 of colonisation mediate susceptibility to disease. We used an established human challenge
175 model ^{14, 15} to determine factors underlying susceptibility to pneumococcal colonisation in
176 people with asthma and healthy controls ^{16, 17}.

177 **Methods**

178 **Study Design**

179 We recruited 50 participants, from June 2016 until April 2018, aged 18-50 years with
180 physician-diagnosed asthma. All were receiving ICS therapy at British Thoracic Society (BTS)
181 treatment steps 2 (up to 400µg budesonide equivalent [BDP] per day) or step 3 (up to 800µg
182 BDP per day and additional long acting beta agonist [LABA]) – see Table 1 and Table E1. All
183 participants gave informed consent.

184 The participant demographics and baseline characteristics were described by clinical history,
185 spirometry with reversibility by inhaled β_2 agonist according to ATS guidelines (EasyOne[®], ndd
186 Medical Technologies, Switzerland), fractional exhaled nitric oxide (Niox Vero[®], Circassia, UK),
187 and blood eosinophil count. Information was sought from primary care to confirm the medical
188 history, current treatment and allergies. At screening, all participants were provided a written
189 asthma action plan, with a peak expiratory flow rate meter and diary (Mini Wright[®], Clement
190 and Clarke Limited, UK). Exclusion criteria included: forced expiratory volume less than 70%
191 predicted after salbutamol; more than 1 exacerbation in the preceding year; treatment with
192 antibiotics or oral steroids in the preceding 4 weeks (full list of exclusion criteria in Table E2).
193 Inoculation was performed as previously described ^{14 18}, by instillation of 80,000 colony-
194 forming units (CFU) *Streptococcus pneumoniae* serotype 6B in 100µL saline into each nostril.
195 This strain has been previously used for challenge by us and others with reproducible carriage
196 rates, is fully sequenced, amoxicillin-sensitive, and does not cause any natural colonisation in
197 Liverpool ^{14, 15, 18}. Follow-up visit schedules are described in Figure E1, and nasal sampling was
198 performed as described for previous studies ^{14, 15, 19}.

199 Participants were contacted daily for the first 7 days to report their peak flow and
200 temperature. They maintained a peak flow diary and symptom log and were advised to follow
201 their personal asthma action plan. At study completion, a 3 day-course of amoxycillin was
202 prescribed for participants who remained colonised at either of the last 2 visits.

203 For microbiological and immunological comparison we used age-matched healthy controls
204 from an influenza vaccine study (Sep 2015- Mar 2017), with identical methods and sampling,
205 except that influenza-study participants received intramuscular tetravalent inactivated
206 influenza vaccine either 3 days before or after inoculation with pneumococcus ²⁰. A subset of
207 colonised asthmatic individuals (n=12) were re-challenged following the same protocol 6-11
208 months after the initial inoculation event.

209 Ethical approvals

210 Ethical Approval was obtained from the Liverpool East NHS Research Ethics Committee
211 (reference number NW/016/0124). The study was co-sponsored by the Royal Liverpool
212 University Hospital and the Liverpool School of Tropical Medicine. International Randomised
213 Controlled Trial Number (ISRCTN) 16755478). Control group was obtained from the study
214 approved under Liverpool East NHS Research Ethics Committee (EudraCT 2014-004634-26)

215 Flow cytometry analysis

216 Nasal: Nasal cells were collected by scraping the inferior turbinate of volunteers consecutively
217 with two curettes (Rhino-pro[®], Arlington Scientific), as described before ¹⁹. Curettes were
218 collected into PBS + 5mM EDTA and 0.5% heat inactivated FBS. Cells were dislodged from
219 curettes by pipetting up and down and immunophenotyping of nasal cells was performed as
220 previously described ^{9, 19}. Briefly, cellular samples were stained on ice for 15 minutes with
221 LIVE/DEAD[®] Fixable Violet Dead Cell Stain (Thermofisher[®]), followed by staining for 15

222 minutes on ice with an antibody cocktail containing Epcam-PE, HLADR-PECy7, CD66b-FITC (all
223 Biolegend®), CD3-APCH7 (BD Biosciences®) or CD3-APCCy7 (Biolegend®), CD14-PercpCy5.5
224 (BD Biosciences®) and CD45-PACOrange (ThermoFisher®). Some samples were additionally
225 stained concurrently with BDCA2-APC (Miltenyi®) and/or CD16-APC, CD1c-PE/Dazzle594,
226 CD19-BV650, CD4-BV605, CD8-BV785, TCRv α 7.2-PE/Dazzle594, TCRv α 7.2-BV711, CD123–
227 BV711 and/or CD117–BV650 (all Biolegend®). Cells were washed at the end of incubation with
228 3mL PBS and filtered through a 70 μ m mesh (ThermoFisher®). After centrifugation for 5
229 minutes at 450xg, pellets were resuspended in 200 μ L CellFIX™ (BD Biosciences®) and kept on
230 ice until sample acquisition. Flow cytometry data were acquired on a LSRII cytometer (BD),
231 and analysed using Flowjo X (Treestar®). Compensation matrices were set using
232 compensation beads (Thermofisher®). All antibodies were titrated and fluorescence minus
233 one controls were used to verify specificity of signal for each of the antibodies included for at
234 least two samples. Samples with fewer than 500 immune cells or 250 epithelial cells were
235 excluded from analysis. To adjust for variable amount of cells collected between curettages,
236 we analysed both absolute cell counts and cell counts normalized to number of epithelial
237 cells. This has the advantage that an increase or decrease of certain immune populations does
238 not affect frequencies of other immune populations.

239 Peripheral Blood: To stain cells, PBMCs were thawed with 50 μ g/mL DNase I (MilliporeSigma)
240 in prewarmed RPMI containing 10% FBS and washed once in media including DNase I. Briefly,
241 cellular samples were stained for 15 minutes with LIVE/DEAD® Fixable Violet Dead Cell Stain
242 (Thermofisher®), followed by staining for 15 minutes with an antibody cocktail containing
243 CD38-FITC, CD7-PE, CD196-PEeFluor610, CD5-PECy7 (all from ThermoFisher®), CD161-APC
244 (BD Biosciences®), CD4-PerPCy5.5, CD3-APCCy7, CD8-AlexaFluor700, CD45-BV510, CD69-

245 BV650 and TCRV α 7.2-BV786 (all from Biolegend[®]). Finally, cells were washed, resuspended in
246 200 μ L PBS, and acquired. Flow cytometry data were acquired on a LSRII cytometer (BD), and
247 analysed using Flowjo X (Treestar[®]). Compensation matrices were set using compensation
248 beads (Thermofisher[®]).

249 Mucosal cytokine levels

250 Concentrated nasal lining fluid was collected by applying synthetic absorptive matrices to the
251 nasal mucosa for 1 minute and stored at -80°C until analysis ²¹. Fluid was eluted by adding
252 100 μ L Luminex assay buffer, supernatant was clarified by centrifugation for 10 minutes, and
253 30 cytokines and immune proteins were analysed as per manufacturer's protocol as we
254 previously described ^{9, 19}.

255 Antibody titres

256 Titres of antibodies against pneumococcal capsule and proteins were measured as previously
257 described ¹⁵. Briefly, ELISA plates were coated with 6B polysaccharide at 4°C overnight and
258 washed 3 times. Absorption buffer was used for blanks, and to generate standards through
259 serial dilution of 89SF. Samples were diluted 1 in 100, and assayed in duplicate. After loading,
260 plates were incubated at room temperature for 2 hours, washed 3 times in washing buffer,
261 and secondary antibody applied and incubated for 90 minutes. Following 3 further washes,
262 plates were incubated in the dark with 100 μ l/well of para-nitrophenyl phosphate, and
263 absorbance measured at 405nm. Samples with coefficient of variation>15% between
264 duplicates were repeated and one sample due to a very high signal (outside standard curve)
265 was repeated using a 1 in 800 dilutions.

266 MSD: In a WHO reference lab, ELISA plates were coated with proteins by MSD. Standards
267 were prepared using 007sp in an initial 1:100 dilution with subsequent four-fold serial

268 dilution. Samples were diluted 1:100, and assayed in duplicate with quality control (QC) sera
269 at 1:1000 and 1:2000 dilutions. Reactions were stopped by agitating with 150µL/well blocking
270 solution (5% BSA 1xPBS) at 700rpm for 1 hour at room temperature. After 4 washes,
271 detection antibody was added for a further 1 hour on the shaker, before a final wash and
272 immediate reading.on a MSD imager.

273 Statistical Analysis

274 SPSS version 22, R 3.5.0 and Graphpad prism version 5 were used for analysis. Area under the
275 bacterial density-time curve were calculated by trapezoid method of \log_{10} (value+0.01).
276 Colonisation rates were compared by chi-square test, and continuous measures by Mann-
277 Whitney U test and independent samples T-test for non-normal distributed and normal
278 distributed data, respectively. Spearman and Wilcoxon tests were used for correlation and
279 paired-sample analysis respectively. All tests were two-tailed, with significance level of
280 $p < 0.05$.

281 Primary End Point and Sample Size Calculation

282 The primary end-point was the experimental colonisation rate in asthmatics compared to
283 healthy controls. Experimental colonisation was defined as positive bacterial culture from
284 nasal wash at any point after inoculation until the end of follow-up. A sample size of 52 was
285 estimated from historic challenge study data in healthy volunteers (colonisation rate 49.6%)
286 and assuming 50% reduction in colonisation rate in people with asthma (i.e. absolute risk
287 difference 24.6%).

288

289 Results

290 A total of 95 volunteers were consented, of which 50 were subsequently inoculated with
291 *Streptococcus pneumoniae* 6B (Figure E2). Reasons for exclusion are described in detail in
292 Figure E2, the commonest being lack of ICS therapy. Median age in the asthma and control
293 groups was 22 years [IQR 20-26] and 20 years [IQR 19-22] respectively (Table 3). 38 (76%)
294 asthma participants and 82 (54%) controls were female (Table 1-3). No serious adverse events
295 occurred. Median baseline blood eosinophil count was 0.2 [IQR 0.1-0.4], with median FEV1%
296 predicted 95% [91-100], median FeNO 25.5 [13.8-49.2] and asthma control (ACT) score 22
297 [20-24] (ACT 25 point scale – score 20-24 well controlled, less than 20 not well controlled).

298 Comparing individuals receiving step 2 and 3 treatment, there was no difference in blood
299 eosinophils ($p=0.596$) and FeNO ($p=0.936$), or control as measured by Asthma Control Test
300 ($p=0.278$) (Table 1). There was a positive correlation between FeNO levels and blood
301 eosinophil levels ($p<0.0001$, $r=0.573$).

302 Determinants of colonisation in asthma

303 Participants who were colonised (positive bacterial culture from nasal wash at any time point)
304 and non-colonised (negative bacterial culture from nasal wash at all time points) had similar
305 baseline characteristics (Table 2). One participant was colonised at baseline with *S.*
306 *pneumoniae* serotype 9, and subsequently became experimentally colonised with 6B, with
307 both serotypes identified at one time point. Body mass index (BMI) was higher in colonised
308 than in non-colonised participants (median 24.7 [IQR 24.1-29.0] and 23.5 [20.1-26.4]
309 respectively, $p=0.019$). FeNO levels were not significantly different at baseline (colonised
310 participants median 20.5 [IQR 13.5-37.5] vs non-colonised participants 29.5 [IQR13.5-54.75],
311 $p=0.287$).

312 Experimental pneumococcal colonisation in asthmatics vs healthy controls

313 The median inoculation dose per nostril was 78,834 CFU [IQR 76,333-84,167] for healthy
314 controls compared to people with asthma 83417 CFU [78,333-85,292]. Table 3 for
315 demographics.

316 Experimental colonisation rates were not significantly different in people with asthma
317 compared with healthy controls (28/50 [56%] vs.68/151 [45%] respectively, $p=0.17$). The
318 pneumococcal density as calculated by the area under the density-time curve was also similar
319 in the two groups (Figure 1A-E). However, the duration of colonisation was decreased in
320 asthmatics compared to healthy controls (median 14 days vs 29 days, $p=0.034$) (Figure 1F).
321 The area under the density-time curves were similar in asthmatics regardless of the dose of
322 ICS ($>400 \mu\text{g BDP}$) and $\text{BMI}>25$) (Figure 2A-D).

323 Homologous rechallenge of asthmatic individuals

324 We have reported complete protection in healthy controls against recolonisation with the
325 same 6B strain up to 1 year after initial experimental colonisation ($n=10$)¹⁵. To test this in
326 asthma, twelve colonised individuals were re-challenged with the same strain 6-11 months
327 after the first inoculation. Of these, four became recolonised (33.3%), which is not-
328 significantly different from the 56% colonisation rate during the primary challenge (relative
329 risk 59.5%, 95% CI: 25.8-138%, $p=0.20$ with Fisher Exact test).

330 Within the limitation of our sample size, the density of the second colonisation episode did
331 not appear substantially different from the first (Figure 3A). Of these four individuals, three
332 cleared colonisation within 14 days of the re-challenge.

333 Pneumococcal antibody titres before and after colonisation

334 In healthy controls, antibody titres against pneumococcal proteins and capsule increase
335 following 6B experimental pneumococcal colonisation, but baseline titres do not predict of
336 risk of subsequent acquisition. To assess this in asthma individuals, we measured IgG titres in
337 serum against 6B polysaccharide and 27 pneumococcal proteins at baseline and day 29 post
338 inoculation (Figure 3B-D). Anti-capsular antibody levels increased upon colonisation in
339 asthmatic individuals (median 3-fold increase, $p = 0.0039$ paired t-test). However, baseline
340 titres were not significantly different between individuals who became colonised and those
341 who did not. Similarly, at baseline, there were no significant differences in IgG titres against
342 any of 27 pneumococcal protein between colonised and non-colonised individuals (Figure 3C).
343 Antibodies against 10 pneumococcal proteins were significantly induced by colonisation,
344 including antibodies against PspC, PspA and PiuA (Figure 3D).

345

346 Nasal cell populations in people with asthma and healthy controls before colonisation
347 To understand differences in immune populations underlying the altered dynamics of
348 pneumococcal colonisation in individuals with asthma, we performed phenotyping of nasal
349 immune cells using flow cytometry and minimally-invasive nasal curettes (Figure E3). Nasal
350 eosinophil frequency was similar in people with well controlled asthma and healthy controls
351 (Figure 4A and E3B), with a modest positive correlation with circulating blood eosinophil
352 levels in people with asthma ($r=0.36$, $p=0.03$, Figure 4B). Nasal neutrophil frequency was
353 lower in people with asthma compared to healthy controls (median neutrophil/epithelial cell
354 ratio 0.35 [0.038-2.75] vs 1.72 [IQR 0.75-4.43], $p=0.0054$, Figure 4C and E3C). A similar pattern
355 was seen in CD3⁺ T cells (median T/epithelial cell ratio 0.079 [0.034-0.32] and 0.36 [0.17-0.89]

356 in asthma and healthy controls respectively, $p < 0.0001$, Figure 4D and E3D). MAIT cells were
357 specifically decreased among T cells in people with asthma (median proportion of total $CD8^+$
358 T cells 9.4% [IQR 5.0-13.3]) compared to healthy controls (median 15.8% [IQR 9.9-25.9],
359 $p = 0.0047$, Figure 3E). Nasal MAIT levels correlated negatively with BMI ($r = -0.38$, $p = 0.023$,
360 Figure 4F). Systemic MAIT cells are associated with protection against pneumococcal
361 colonisation ²², we analysed MAIT cells in blood of individuals with and without asthma
362 (Figure E4). Blood MAIT cells were not different in healthy and asthma individuals (Figure 4G).
363 MAIT cell frequency was increased at baseline in healthy individuals that were protected
364 compared to susceptible individuals ($p = 0.026$); there was no difference between colonised
365 and non-colonised asthma individuals.

366 Changes in nasal cell populations after colonisation

367 There was a trend towards recruitment of monocytes at day +9 post colonisation compared
368 to baseline in people with asthma (median fold change (FC)= 3.84, [IQR 1.15-9.38], $p = 0.055$).
369 This effect of colonisation was also present in healthy controls (median FC= 3.63, [IQR 1.24-
370 11.43], $p = 0.002$, Figure 5A, B). Monocyte levels remained increased at day+29 in both people
371 with asthma (median FC=2.23 [IQR 1.50-4.25], $p = 0.03$) and healthy controls (median FC=1.72
372 [IQR 0.35-11.43], $p = 0.049$). Evidence for monocyte recruitment persisted after normalising to
373 epithelial cells to correct for micro biopsy size (Figure 5C, D). $CD66b^+$ granulocytes were
374 significantly increased in people with asthma at day+9 (median FC=1.78, [IQR 1.09-8.06],
375 $p = 0.044$), but were no longer significantly increased at day+29 (median FC=1.84, [IQR 0.88-
376 5.04], $p = 0.17$, Figure 5E). In healthy controls, granulocytes were increased at day+7 (median
377 FC=3.17, [IQR 1.05-7.37], $p = 0.009$), returning to baseline levels at day+28 (median FC=1.03,
378 [IQR 0.41-3.05], $p = 0.89$, Figure 5F). Contrary to monocytes, In subgroup analysis, neither

379 eosinophils or neutrophils were significantly recruited, although there was a trend for both
380 increased neutrophils (median FC=1.6) and eosinophils (median FC=2.0) at day 9 in asthmatics
381 (Figure E5). After correction to the total number of epithelial cells, these transient increases
382 in nasal granulocyte numbers were not significant, although there was still a tendency to
383 increased granulocyte numbers at day+9 in people with asthma (median FC=1.90) and healthy
384 controls (median FC=2.07) (Figure 5G, H). No changes in monocytes and granulocytes were
385 observed after challenge in non-colonised subjects in either asthma or healthy control
386 cohorts.

387 Nasal cytokines during experimental colonisation in asthmatic and healthy individuals
388 We observed reduced populations of neutrophils and T cells in asthmatics at baseline (Table
389 2). Following colonisation, there was no evidence of excessive infiltration of inflammatory
390 cells (Figure 4) or increase in FeNO levels (Table 2). We therefore characterized nasal
391 inflammation in more detail by analysing nasal lining fluid for 30 cytokines and immune
392 proteins using multiplex detection (Luminex). Recapitulating the cell population data, we saw
393 mostly reduced cytokines in the nose of asthma compared to healthy individuals: 22/30
394 cytokines were significantly decreased (Figure 6A), and only anti-inflammatory IL-1RA
395 increased. Following inoculation, we did not see any increase in nasal cytokine levels in
396 asthma or healthy controls regardless of colonisation status (Figures 6B,C).

397

398 **Discussion**

399 This is the first study to examine controlled challenge of an infectious bacterium in people
400 with well controlled asthma, providing a unique opportunity to study experimental
401 nasopharyngeal colonisation and its relation to clinical characteristics. All participants had
402 very well controlled physician diagnosed asthma and were taking inhaled corticosteroids.

403 Experimental colonisation rates and density were not significantly higher in people with well
404 controlled asthma on ICS therapy compared to healthy controls. However, a major difference
405 to healthy controls is that colonisation conferred less protection to homologous re-challenge,
406 although our sample size for re-challenge (n=12) is insufficient to determine the exact rate of
407 protection. In previous cross-sectional observational studies, high colonisation rates in
408 people with asthma were reported ⁴. Our observation that a colonisation episode in
409 asthmatics is not fully immunising could explain these higher rates. However, direct
410 translation of our results is limited as the cross-sectional data tend to have ill-defined
411 diagnosis (self-reporting), and limited background information on medication, control, clinical
412 characteristics and smoking history. Other factors prevalent in the wider populations of
413 asthmatics may therefore influence colonisation rates, such as a high dose of ICS therapy,
414 sub-optimal control, or more severe disease.

415 Despite incomplete protection against re-challenge, colonisation increased systemic antibody
416 titres against pneumococcal protein and capsule. This indicates that serum IgG is not
417 protective against colonisation in asthma, and mirrors previous data from healthy adults in
418 which anti-capsular memory B cells gave protection, but antibody titres did not ¹⁵.

419 Nasal neutrophils and T cells, including MAIT cells, were decreased in people with asthma
420 compared to healthy controls. Decreased MAIT cells have been reported amongst T cells in
421 blood and sputum of people with asthma on ICS therapy ¹¹. In contrast, reduced MAIT cells in
422 this study were confined to the nasal mucosa as we did not see changes in systemic MAIT
423 numbers in asthma compared to healthy individuals here. Studying a young cohort with well-
424 controlled asthma may explain this.

425 The decreased immune frequencies of neutrophils and T cells were mirrored by decreased
426 levels of cytokines in the nasal lining fluid of asthma individuals. Together this suggest a
427 general immune-suppressive environment, possibly due to ICS therapy and is a reflection of
428 the good asthma control in our participants.

429 After colonisation the mucosal cellular changes were similar in people with asthma and
430 healthy controls with recruitment of monocytes and granulocytes to the nose. We have
431 previously reported a recruitment of monocytes to the nose following colonisation in healthy
432 volunteers ⁹ ; despite altered baseline nasal immune parameters, there is no impaired
433 mucosal immune response to pneumococcal colonisation in people with asthma taking
434 moderate doses of ICS.

435 We did not see significant inflammation following colonisation when measured by exhaled
436 NO or cytokine levels. During exacerbations amongst children, pneumococcal carriage rates
437 increase ²³. The fact that we did not see inflammation triggered by colonisation could be an
438 indication that pneumococcal acquisition is secondary to asthma exacerbations. Alternative
439 explanations are that our volunteers had good asthma control, or that colonisation responses
440 differ between children and adults. The reduced colonisation duration in asthma compared
441 to healthy individuals was unexpected and seems paradoxical to the lack of excessive

442 inflammation observed in asthmatic individuals. It is possible that other inflammatory or
443 epithelial markers that we did not explore in this study could underlie this difference in ability
444 to sustain or clear colonisation.

445 Within the asthma cohort, an increased BMI was associated with likelihood of experimental
446 colonisation, while other clinical characteristics, such as FeNO, blood eosinophils and
447 spirometry were not. Blood eosinophils and baseline FeNO levels correlated positively, as
448 seen in previously ²⁴. There was also a positive correlation between nasal and blood
449 eosinophils. BMI has not been studied in the context of nasopharyngeal colonisation in
450 asthma, although obesity related asthma is a recognised phenotype ²⁵. Obesity may be a
451 consequence of corticosteroid treatment, although this is unlikely in our well-controlled
452 cohort, who required one or less course of oral steroids in the last 12 months. We do not have
453 data on BMI in our healthy volunteers, therefore it is plausible that obesity may affect
454 nasopharyngeal colonisation independent of asthma.

455 The careful characterisation of people with asthma, age-matched healthy controls and
456 controlled challenge are a strength of our study. For safety reasons, we were unable to
457 include participants with severe asthma on high dose of ICS. This was a small study powered
458 to detect experimental colonisation rates in people with asthma and not general differences
459 within the population.

460 **Conclusion**

461 People with asthma had lower nasal neutrophil and T cell levels compared to healthy controls,
462 which was confirmed by lower levels of nasal cytokines. Asthma individuals had a shorter
463 duration of of nasopharyngeal colonisation when challenged with *S.pneumoniae*. The rate of

464 colonisation was higher with increasing BMI, but not different from controls. Colonisation in
465 asthma individuals had a limited immunizing effect to homologous re-challenge suggesting a
466 function immunological difference either due to asthma disease or treatment.

467 **Acknowledgements**

468 We would like to thank all volunteers for participating in this study and the National Institute
469 for Health Research (NIHR) Local Comprehensive Research Network for clinical support. We
470 are also grateful to the entire EHPC team and clinicians who provided on call clinical cover for
471 the study. Flow cytometry acquisition was performed on a BD LSR II cytometer funded by a
472 Wellcome Trust Multi-User Equipment Grant (104936/Z/14/Z)

473

474

475

476

477 References

478

- 479 1. McKeever T, Harrison TW, Hubbard R, Shaw D. Inhaled corticosteroids and the risk of
480 pneumonia in people with asthma: a case-control study. *Chest* 2013; 144:1788-94.
- 481 2. Qian CJ, Coulombe J, Suissa S, Ernst P. Pneumonia risk in asthma patients using inhaled
482 corticosteroids: a quasi-cohort study. *British Journal of Clinical Pharmacology* 2017;
483 83:2077-86.
- 484 3. O'Byrne PM, Pedersen S, Carlsson LG, Radner F, Thoren A, Peterson S, et al. Risks of
485 pneumonia in patients with asthma taking inhaled corticosteroids. *Am J Respir Crit
486 Care Med* 2011; 183:589-95.
- 487 4. Esposito S, Terranova L, Patria MF, Marseglia GL, Miraglia del Giudice M, Bodini A, et
488 al. *Streptococcus pneumoniae* colonisation in children and adolescents with asthma:
489 impact of the heptavalent pneumococcal conjugate vaccine and evaluation of
490 potential effect of thirteen-valent pneumococcal conjugate vaccine. *BMC Infectious
491 Diseases* 2015; 16:12.
- 492 5. Hussain M, Melegaro A, Pebody RG, George R, Edmunds WJ, Talukdar R, et al. A
493 longitudinal household study of *Streptococcus pneumoniae* nasopharyngeal carriage
494 in a UK setting. *Epidemiol Infect* 2005; 133:891-8.
- 495 6. Almirall J, Bolibar I, Serra-Prat M, Roig J, Hospital I, Carandell E, et al. New evidence of
496 risk factors for community-acquired pneumonia: a population-based study. *Eur Respir
497 J* 2008; 31:1274-84.
- 498 7. Zaidi SR, Blakey JD. Why are people with asthma susceptible to pneumonia? A review
499 of factors related to upper airway bacteria. *Respirology* 2019; 24:423-30.
- 500 8. Jounio U, Juvonen R, Bloigu A, Silvennoinen-Kassinen S, Kaijalainen T, Kauma H, et al.
501 Pneumococcal carriage is more common in asthmatic than in non-asthmatic young
502 men. *The Clinical Respiratory Journal* 2010; 4:222-9.
- 503 9. Jochems SP, Marcon F, Carniel BF, Holloway M, Mitsi E, Smith E, et al. Inflammation
504 induced by influenza virus impairs human innate immune control of pneumococcus.
505 *Nature Immunology* 2018; 19:1299-308.
- 506 10. Talbot TR, Hartert TV, Mitchel E, Halasa NB, Arbogast PG, Poehling KA. Asthma as a
507 risk factor for invasive pneumococcal disease. *N Engl J Med* 2005; 352.
- 508 11. Hinks TSC. Mucosal-associated invariant T cells in autoimmunity, immune-mediated
509 diseases and airways disease. *Immunology* 2016; 148:1-12.
- 510 12. Melo JT, Jr., Tunstall T, Pizzichini MMM, Maurici R, Rocha CC, Dal-Pizzol F, et al. IL-5
511 Levels in Nasosorption and Sputosorption Correlate with Sputum Eosinophilia in
512 Allergic Asthma. *Am J Respir Crit Care Med* 2019; 199:240-3.
- 513 13. Hansel TT, Johnston SL, Openshaw PJ. Microbes and mucosal immune responses in
514 asthma. *Lancet* 2013; 381:861-73.
- 515 14. Collins AM, Wright AD, Mitsi E, Gritzfeld JF, Hancock CA, Pennington SH, et al. First
516 human challenge testing of a pneumococcal vaccine. Double-blind randomized
517 controlled trial. *Am J Respir Crit Care Med* 2015; 192:853-8.
- 518 15. Ferreira DM, Neill DR, Bangert M, Gritzfeld JF, Green N, Wright AK, et al. Controlled
519 human infection and rechallenge with *Streptococcus pneumoniae* reveals the

- 520 protective efficacy of carriage in healthy adults. *Am J Respir Crit Care Med* 2013;
521 187:855-64.
- 522 16. Wenzel SE. Asthma: defining of the persistent adult phenotypes. *Lancet* 2006;
523 368:804-13.
- 524 17. Lambrecht BN, Hammad H. The immunology of asthma. *Nat Immunol* 2015; 16:45-56.
- 525 18. Au - Gritzfeld JF, Au - Wright AD, Au - Collins AM, Au - Pennington SH, Au - Wright AKA,
526 Au - Kadioglu A, et al. Experimental Human Pneumococcal Carriage. *JoVE*
527 2013:e50115.
- 528 19. Jochems SP, Piddock K, Rylance J, Adler H, Carniel BF, Collins A, et al. Novel Analysis of
529 Immune Cells from Nasal Microbiopsy Demonstrates Reliable, Reproducible Data for
530 Immune Populations, and Superior Cytokine Detection Compared to Nasal Wash. *PLOS*
531 *ONE* 2017; 12:e0169805.
- 532 20. Rylance J, de Steenhuijsen Piters WA, Pojar S, Nikolaou E, German E, Mitsi E, et al.
533 Effect of Live Attenuated Influenza Vaccine on Pneumococcal Carriage. *bioRxiv*
534 2018:343319.
- 535 21. Au - Thwaites RS, Au - Jarvis HC, Au - Singh N, Au - Jha A, Au - Pritchard A, Au - Fan H,
536 et al. Absorption of Nasal and Bronchial Fluids: Precision Sampling of the Human
537 Respiratory Mucosa and Laboratory Processing of Samples. *JoVE* 2018:e56413.
- 538 22. Jochems SP, de Ruyter K, Solórzano C, Voskamp A, Mitsi E, Nikolaou E, et al. Innate and
539 adaptive nasal mucosal immune responses following experimental human
540 pneumococcal colonization. *The Journal of Clinical Investigation* 2019; 129:4523-38.
- 541 23. Zhou Y, Jackson D, Bacharier LB, Mauger D, Boushey H, Castro M, et al. The upper-
542 airway microbiota and loss of asthma control among asthmatic children. *Nature*
543 *Communications* 2019; 10:5714.
- 544 24. Silvestri M, Sabatini F, Sale R, Defilippi A-C, Fregonese L, Battistini E, et al. Correlations
545 between exhaled nitric oxide levels, blood eosinophilia, and airway obstruction
546 reversibility in childhood asthma are detectable only in atopic individuals. *Pediatric*
547 *Pulmonology* 2003; 35:358-63.
- 548 25. Peters U, Dixon AE, Forno E. Obesity and asthma. *Journal of Allergy and Clinical*
549 *Immunology* 2018; 141:1169-79.
- 550 26. SIGN/BTS. SIGN 153 • British guideline on the management of asthma. 2016.

551

552

553

554 **Tables**

555 Table 1: Demographics and clinical characteristics for the asthma cohort according to

556 BTS treatment step

	Whole Group	BTS Step 2	BTS Step 3	P value
Total participants n (%)	50	36 (72)	14 (28)	
Age (years) median (IQR)*	22 (19.0-26.0)	21 (19.0-25.0)	22(19.0-27.0)	0.632
Gender Female n (%) †	38 (76)	28 (77.7)	10 (71.4)	0.637
BMI (kg/m2) Mean (95 CI, SD) ‡	24.6 (21.6-27.5)	25.3 (23.1 - 27.6, 6.7)	24.9 (22.9 - 26.8, 3.3)	0.821
Blood eosinophils Median (IQR)*	0.2 (0.1-0.4)	0.2 (0.1-0.4)	0.3 (0.1-0.4)	0.596
FEV1% predicted Mean (95 CI, SD) ‡	95 (13.28)	95 (91-100, 13.48)	94 (86-101,13.19)	0.752
FeNO-ppb baseline Median (IQR)*	25.5 (13.8-49.2)	27 (12.0-50.5)	20.5 (14.8-49.2)	0.936
PEFR variability% Median (IQR)*	14.6 (9.6-21.1)	14.3 (9.5-21.9)	14.8 (10.0-26.7)	0.756
ACT score baseline Median (IQR)*	22 (20-24)	22 (20-24)	22(20-23)	0.278
Inhaled Corticosteroid (µg) median (IQR)*	400 (400-400)	400 (400-400)	450 (400-800)	0.001
Colonisation status n (%) †	28 (56%)	19 (53%)	9 (64%)	0.462

557

558 BTS Treatment Steps are part of the British Thoracic Society (BTS) guidelines on management of asthma, where treatment is increased in
559 stepwise manner -starting from short acting beta agonist at step 1, to oral steroids at step 5. These are described in online supplement Table

560 E2. *Mann Whitney U Test, †Pearson chi square, ‡Independent Samples T test

561

562 Table 2 Demographics and clinical characteristics for the asthma cohort according to
563 colonisation status

	Whole Group	Colonised	Non-Colonised	p value
Number of Participants	50	28 (56)	22 (44)	n/a
Age (years) median (IQR)*	22 (19.8-26.0)	22 (20-26)	21(19-24)	0.432
Gender Female n (%)†	38 (76)	23(82)	15(68)	0.251
BMI (kg/m2) Median (IQR) ‡	24.6 (21.6-27.5)	24.7 (24.1-29.0)	23.5 (20.1-26.4)	0.019
Blood eosinophils Median (IQR)*	0.2 (0.1-0.4)	0.2 (0.1-0.45)	0.25 (0.1-0.4)	0.933
§Blood Eosinophils >0.3 n (%)†	n/a	16 (59%)	11 (41%)	0.615
FEV1% predicted Median (IQR) ‡	95.5 (87.5-105)	98.5 (88.25-105)	94.5 (84.5-103.5)	0.340
PEFR variability >12% ‡		15 (62.5%)	13 (72%)	0.508
FeNO-ppb baseline Median (IQR)*	25.5 (13.75-49.25)	20.5 (13.5-37.5)	29.5 (13.5-54.75)	0.287
FeNO ppb Day 7 median (IQR)*	25 (11-41.5)	25 (10-37)	26.5 (13.75- 54.75)	0.526
¶ FeNO >40 ppb n** (%) †	n/a	6 (37.5%)	10 (62.5%)	0.071
ACT score baseline Median (IQR) ‡	22 (20.75-24)	22 (20.25-24)	22 (20.75-24)	0.129
ACT score Day 29 median (IQR) ‡	22 (21-24)	22 (22-24)	22.5 (22-24)	0.816
Inhaled Corticosteroid (µg) median (IQR)*	400 (400-400)	400 (400-500)	400 (350-400)	0.208

564 * Mann Whitney U Test, † Pearson chi square, ‡ Independent Samples T test, § missing values
565

566 **n = number of participants with a raised FeNO in each cohort. ¶ Pearson's chi square p=0.071 for a raised FeNO of >40 at baseline for
567 colonisation and for change in FeNO from baseline † Pearson's chi square p=0.367.

568 §Pearson's Chi square p=0.615 for a raised eosinophil count of >0.3 at baseline, Pearson's chi square test p=0.274 for colonisation positive
569 with steroid dose >400µg, and for steroid dose >500µg p=0.288

570

571 Table 3 Colonisation rates in people with asthma compared to healthy control

	Asthma	Healthy Control	P value
	(N=50)	(N=151)	
Demographics			
Median age (range) – year	22 (20-26)	20 (19-22)	<.0005*
Female – no. (%)	38 (76)	82 (54.3)	<0.007 [†]
Median dose (range) – CFU/nostril	83417 (78333-85292)	78834 (76333-84167)	<0.001*
Colonisation Status positive any timepoint– no (%)	28 (56)	68 (45)	0.178 [†]
Colonisation Status positive – day 2 (%)	19 (38)	61 (40)	0.764 [†]
Colonisation Status positive – day 7 (%)	22 (44)	62(41)	0.715 [†]
Colonisation Status positive – day 9 (%)	17 (34)	60 (40)	0.470 [†]
Colonisation Status positive – day 14 (%)	19 (38)	50 (33)	0.528 [†]
Colonisation Status positive – day 22 (%)	12 (24)	43 (28)	0.538 [†]
Colonisation Status positive – day 29 (%)	11 (22)	34 (23)	0.939 [†]
Duration days median (range)	14 (7-29)	29 (14-29)	0.034*
Colonisation Density log transformed AUC (cfu/ml) median (range)	63.49 (14.04-116.3)	81.18 (48.15-104.5)	0.060*

572

573 *Mann Whitney U Test, [†]Pearson chi square

574

575 **Figure Legends**

576 **Figure 1:** Pneumococcal densities in people with asthma and healthy controls A-C. Area under
577 log-transformed bacterial colonisation density curve for participants colonised (positive
578 bacterial culture from nasal wash) with pneumococcus at any time point who attended all
579 visits up to A) day 14 (n=asthma 27, healthy control (HC) 67), B) up to day 22 (n= 27 asthma,
580 57 HC) and C) up to day 29 (n=27 asthma, 59 HC). Individual volunteers are shown, and the
581 lines represent median and inter-quartile range p values for Mann Whitney U Test are shown.
582 D-E: Bacterial colonisation density at each time point; D) all positive participants (positive
583 bacterial culture from nasal wash at any time point) with negative time points included
584 (participants attended the visit and the nasal wash sample was negative for bacterial culture)
585 (n=28 asthma, 68 HC), E) all positive participants at any timepoint with negative values
586 removed (asthma n=19, 22, 17,19 ,12 ,11 at days 2, 7, 9, 14, 22,29 respectively, HC n=61, 62,
587 60, 50, 43, 35 at days 2, 7, 9, 14, 22 and 29. Values are mean and 95% confidence interval for
588 log transformed densities at each time point + 0.01 added to all values to allow log
589 transformation). F) Cumulative clearance of colonisation (first time point when nasal wash
590 was negative for bacterial culture following a positive result at an earlier time point) in asthma
591 vs HC at each time point. Clearance rates at each time point for asthma and HC

592

593 **Figure 2:** Bacterial colonisation density for asthmatics. A) dose of inhaled corticosteroid (ICS)
594 >400µg n=7 or ≤400µg n=21, all colonised (nasal wash positive for bacterial culture at any
595 time point) participants with negative time points (nasal wash negative for bacterial culture
596 at a specific timepoint) included. B) ICS dose >400µg or <400µg all colonised participants with
597 negative time points removed. C) stratification by body mass index (BMI) >25 n=12, <25 n=16,
598 all colonised participants with negative time points included. D) BMI >25 or <25, all colonised
599 participants with negative time points removed. Values are log transformed, bars represent
600 mean and 95% confidence interval.

601

602 **Figure 3:** Immunising effect of colonisation in asthmatic individuals. A) Bacterial colonisation
603 density during challenge and re-challenge. Log transformed densities at each timepoint are
604 shown. The mean value of log-transformed colonisation density during the primary
605 colonisation episode for all asthma individuals is depicted by a grey line (as found in Figure
606 1D). The four individuals that were positive upon re-challenge are depicted. Only densities for
607 positive nasal washes are shown and re-challenge samples per volunteer are indicated by an
608 R after their ID. For the re-challenge phase, samples were only collected up to day 14,
609 indicated by a dashed line. B) Anti-6B polysaccharide IgG titres were measured in serum of
610 asthmatic individuals before and after challenge, stratified by colonisation status. ** $p = 0.004$
611 by paired t-test. C) Baseline levels of IgG titres against 27 pneumococcal proteins measured
612 by multiplex. Mean and 95% confidence intervals are shown for colonised (grey) and non-
613 colonised (white) asthmatic individuals. D) Anti-protein IgG titres depicted as \log_2 fold-change
614 to baseline, with individuals stratified by colonisation status. Mean and 95% confidence
615 interverals are shown. Red bars depict proteins against which titres were significantly
616 different following colonisation compared to baseline ($p < 0.05$ by paired t-test, corrected for
617 multiple testing using Benjamini-Hochberg).

618

619 **Figure 4:** Nasal immune profiles in asthma (closed circles) and healthy control (closed squares)
620 at baseline. Levels of A) eosinophils normalized to epithelial cells for people with asthma and
621 healthy controls. Symbols represent individuals, with superimposed group median and IQR,
622 and. B) Correlation by linear regression between blood eosinophils (x1000/ μ L blood) and
623 nasal eosinophils (Spearman rank test). Levels of C) neutrophils and D) CD3+ T cells
624 normalized to epithelial cells for asthmatics and healthy controls (HC). Student t-tests were
625 performed after normalisation by log-transformation data. E) Percentage of mucosal
626 associated invariant T cells (MAIT) amongst nasal CD8+ T cells. Median and IQR are
627 superimposed. and symbols represent individual volunteers. Student t-test was used. F)
628 Linear correlation between body mass index (BMI) and MAIT cell frequency. (Spearman rank
629 test). G) Levels of MAIT cells among blood CD8+ T cells at baseline in asthmatics and healthy
630 donors. Mann-Whitney tests were used to compare colonisation status for healthy controls
631 or asthmatics as data were not normally-distributed.

632

633 **Figure 5.** Longitudinal measurements of monocytes and neutrophils in nasal mucosa following
634 pneumococcal challenge. Baseline-normalized levels of monocyte numbers in A) asthma and
635 B) healthy control, and monocyte levels normalized to epithelial cells for C) asthma and D)
636 healthy control. Baseline-normalized levels of granulocyte numbers in E) asthma and F)
637 healthy control and granulocyte numbers normalized to epithelial cells for G) asthma and H)
638 healthy control are shown. Tukey boxplots are presented as well as results from paired-
639 Wilcoxon rank tests compared to baseline levels (comparing the change from baseline to the
640 days 7, 9, and 29 as shown); FC= Fold Change, Spn = *S. pneumoniae*.

641

642 **Figure 6.** Nasal lining fluid cytokine analysis. A) Baseline levels of 30 cytokines for asthmatics
643 (A, grey) and healthy donors (HD, white). Significantly different cytokines are indicated in red,
644 while non-significant cytokines in white. Based on t-test on log-transformed values, followed
645 by Benjamini-Hochberg correction for multiple testing with cut-off of $p = 0.01$. Boxplots are
646 shown per group. B) Asthmatic (n=55, 26 of whom were colonised) and C) healthy donor
647 (n=63, 30 of whom were colonised) heatmaps over time following inoculation. The mean log₂
648 fold-change compared to baseline per group is shown per day and per cytokine, stratified by
649 colonisation status. No significant changes were seen by paired t-test followed by Benjamini-
650 Hochberg multiple testing correction.

651

652

653

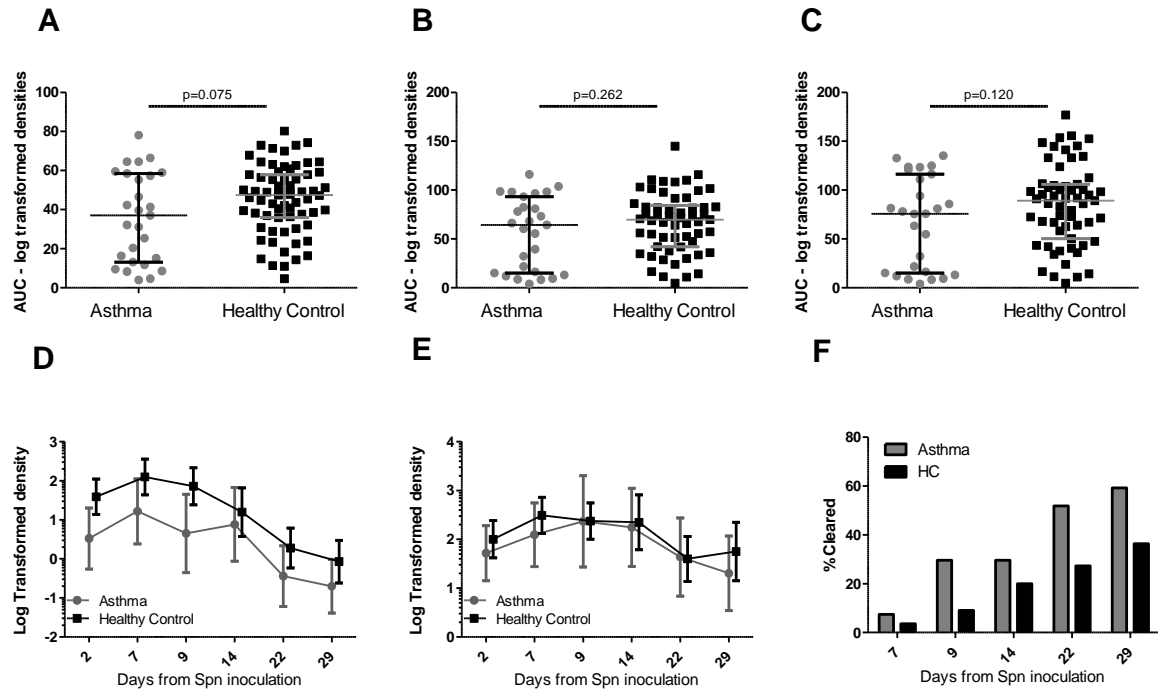
654

655

656

657

658



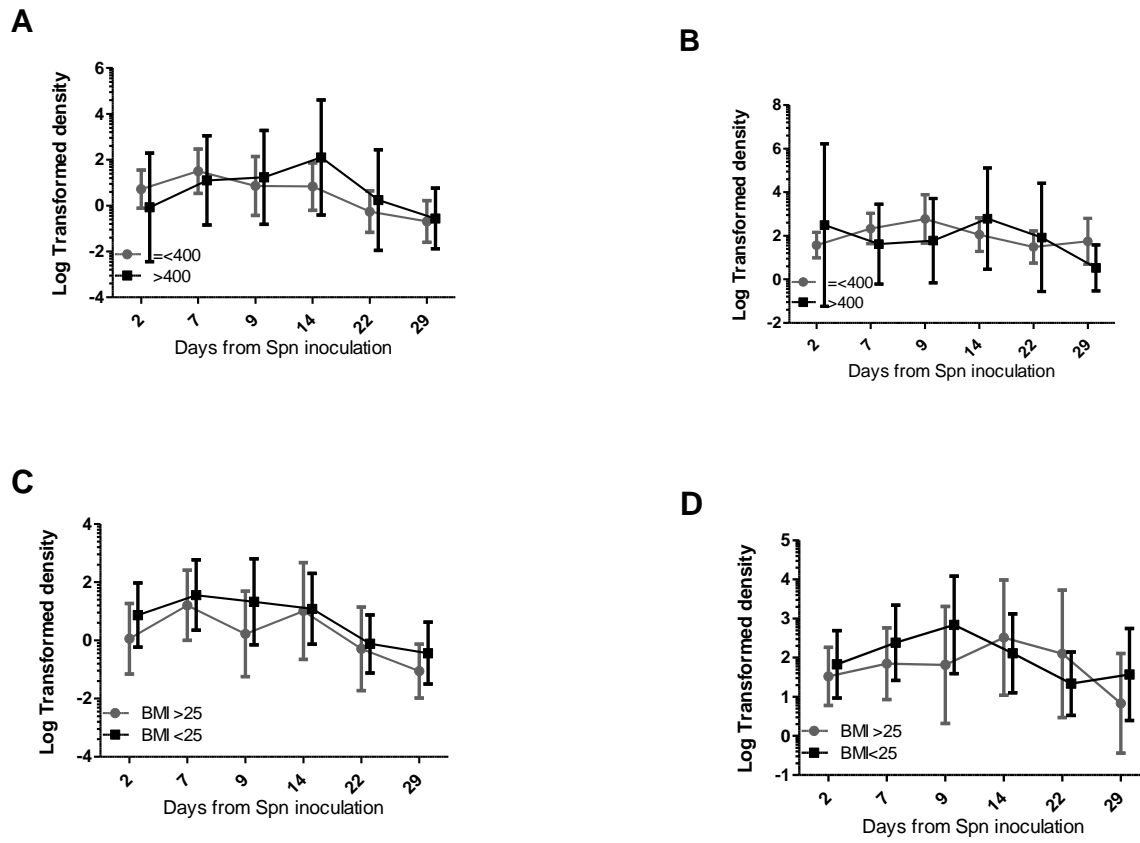
659

660

661

Figure 1

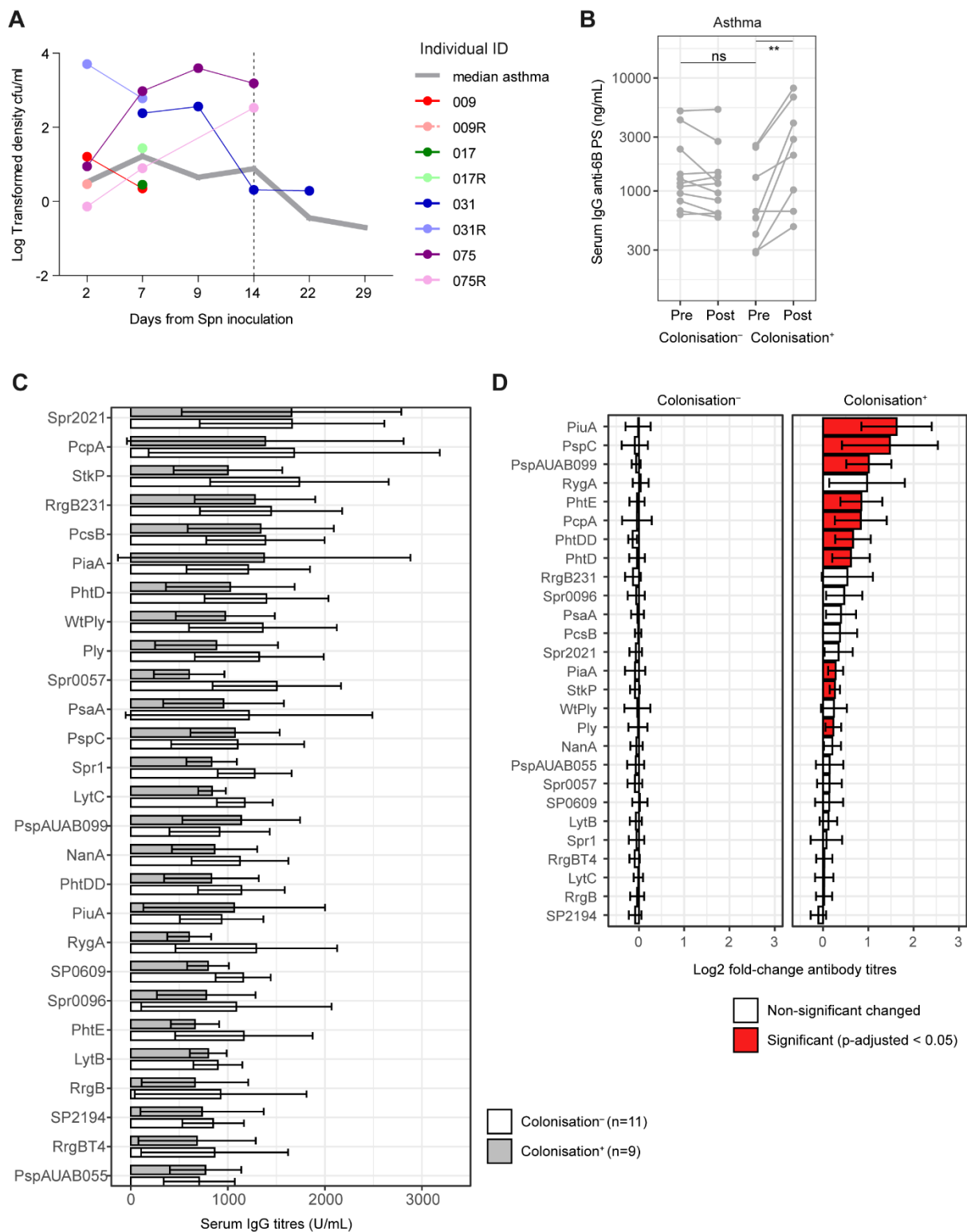
662



663

664 Figure 2

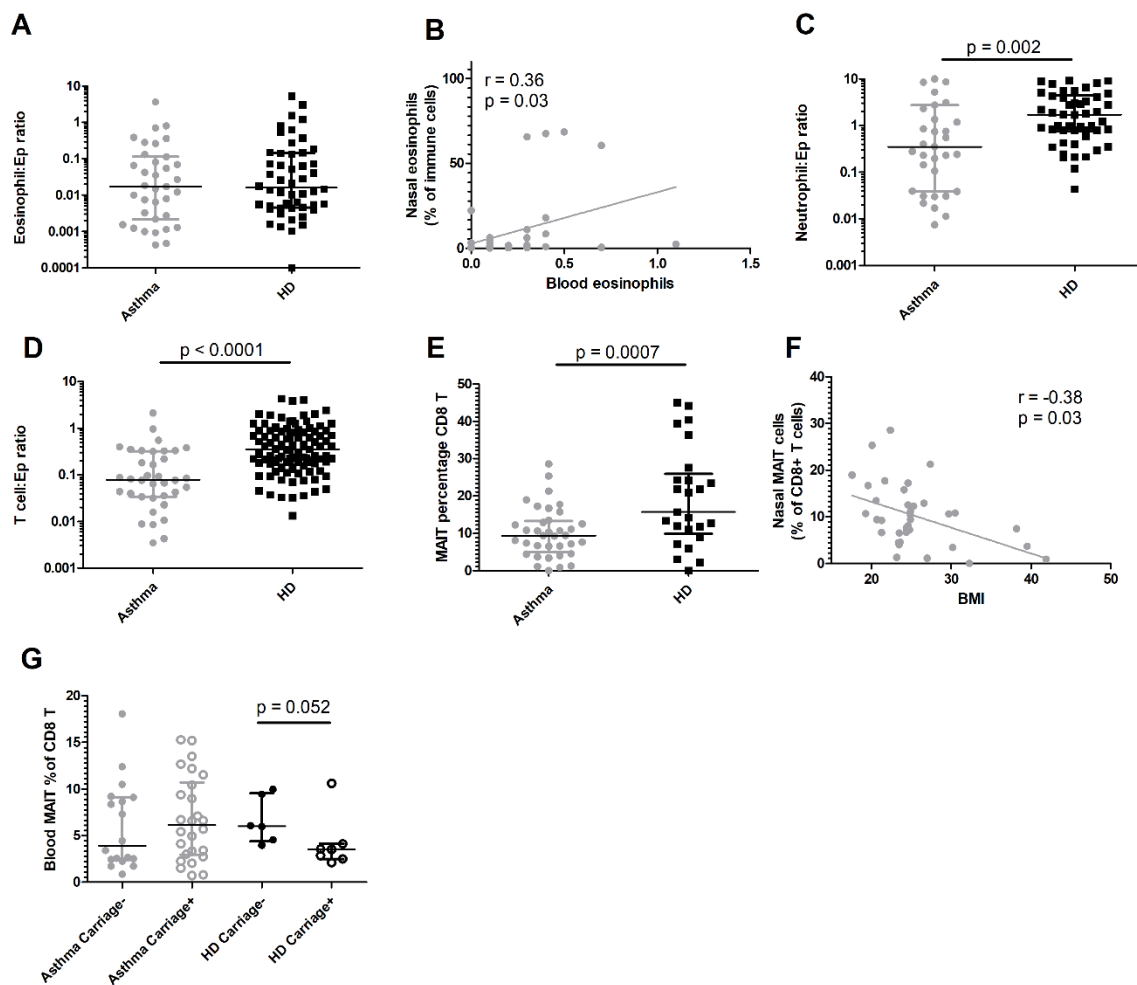
665



666

667 Figure 3

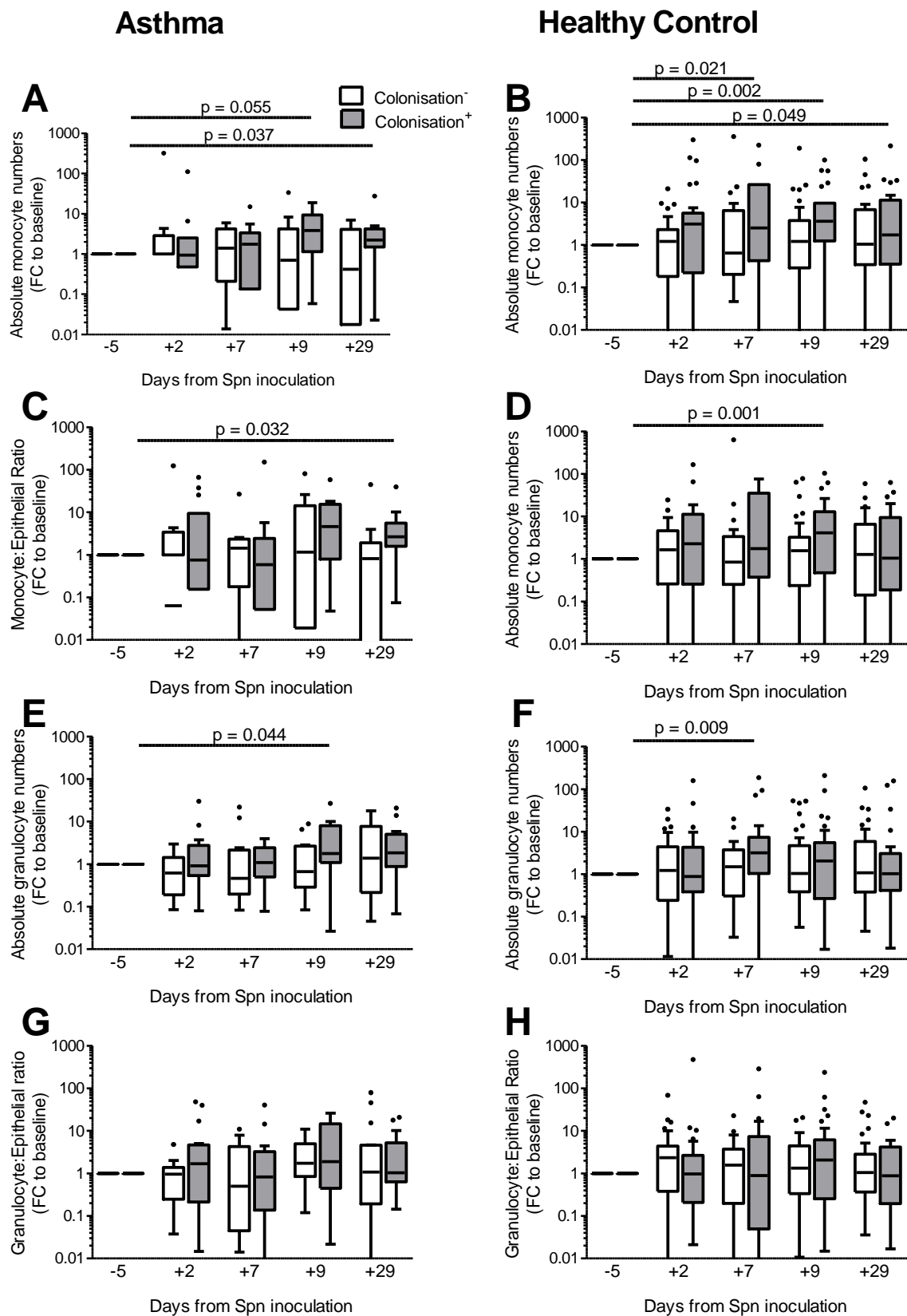
668



669

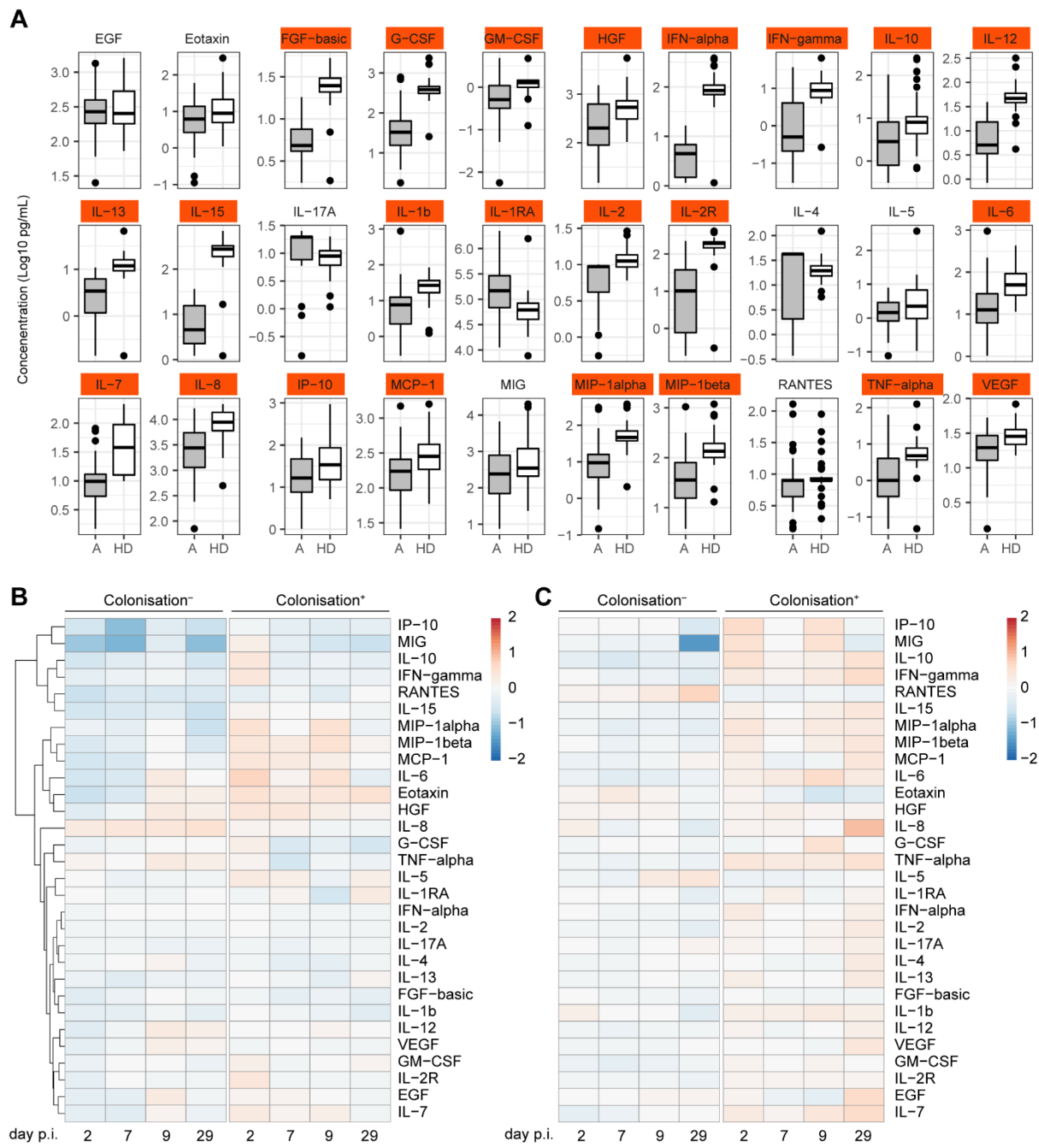
670 Figure 4

671



672

673 Figure 5



675

676 Figure 6

677

678 Online Data Supplement

679 *Table E1: British Thoracic Society Treatment steps ²⁶; shaded area represent the cohort of patients recruited for the study*

BTS Treatment Step		
1	Mild intermittent asthma	Inhaled short acting β_2 (SABA) agonist as required
2	Regular Preventer Therapy	SABA + <ul style="list-style-type: none"> Inhaled Corticosteroids (ICS) 200-400 μg
3	Initial add-on therapy	SABA+ <ul style="list-style-type: none"> Add in inhaled long acting β_2 agonist (LABA) Increase ICS up to 800μg Consider other therapies – Leukotriene receptor antagonists (LRA) and slow release theophylline
4	Persistent poor-control	SABA+LABA <ul style="list-style-type: none"> Increase ICS up to 2000μg

5 Continuous or frequent use SABA+LABA+2000µg ICS

of oral steroids

- Regular ICS to control symptoms

680

681

682

683 *Table E2: Exclusion Criteria for EHPC Asthma*

684

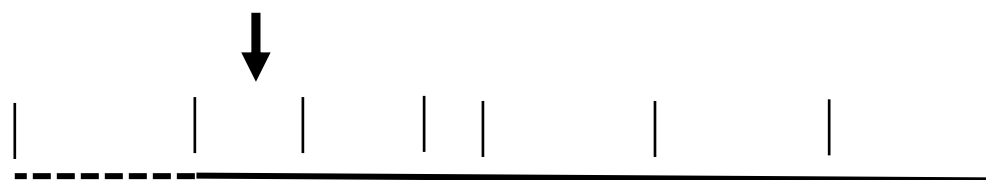
- Close physical contact with at-risk individuals (children under 5yrs, immunosuppressed adults)
- History of drug or alcohol abuse - drinking over the recommended alcohol intake limit (more than 14 units of alcohol per week).
- Current Smokers or ex-smoker with a significant smoking history (>10 pack years)
- Taking medications that may affect the immune system e.g. oral *steroids*, *steroid nasal spray*, antibiotics, and disease-modifying anti-rheumatoid drugs.
- Any acute illness – unexplained symptoms in the preceding 14 days.
- Having received any antibiotics, oral steroids or nasal steroid spray in the preceding 28 days
- More than 1 asthma exacerbation (as defined by ATS) in the last twelve months.
- Taking anticoagulants
- History of culture-proven pneumococcal disease
- Allergy to penicillin/amoxicillin
- Simultaneously involved in another clinical trial unless observational or in follow-up (non-interventional) phase.
- History of significant cardiorespiratory disease (excluding stable hypertension, and asthma at treatment step 2 and 3), or diseases associated with altered immunity, including diabetes, alcohol abuse, malignancy, rheumatological conditions
- Pregnancy
- Taking any medications except those on the “allowed list” (statins, anti-hypertensives, antidepressants, bisphosphonates, hormone replacement therapy, vitamin supplements, anti-acid medications, nicotine replacement therapy (NRT), inhaled steroids up to 800 micrograms BDP equivalent, inhaled beta 2 agonists, leukotriene receptor antagonist

685

686

687

688



<i>Timepoint</i>	<i>Pre-screen</i>	<i>-5</i>	<i>2</i>	<i>7</i>	<i>9</i>	<i>14</i>	<i>22*</i>	<i>29</i>
<i>Baseline investigation</i>	✓							
<i>Nasal wash</i>		✓	✓	✓	✓	✓	✓	✓
<i>Nasal cells</i>		✓	✓	✓	✓			✓
<i>FeNO</i>	✓			✓				

689

690 Figure E1: Study Overview: Study design showing timepoints for follow up visits. Participants
 691 were pre-screened up to 14 days before screen; at baseline full history, including relevant
 692 examination was done along with Spirometry, Peak Expiratory Flow Rate (PEFR), and baseline
 693 blood samples. Nasal wash was obtained for pneumococcal detection and nasal cells for
 694 immunophenotyping. *Only colonised participants. Fractional Exhaled Nitric Oxide (FeNO)

695

696

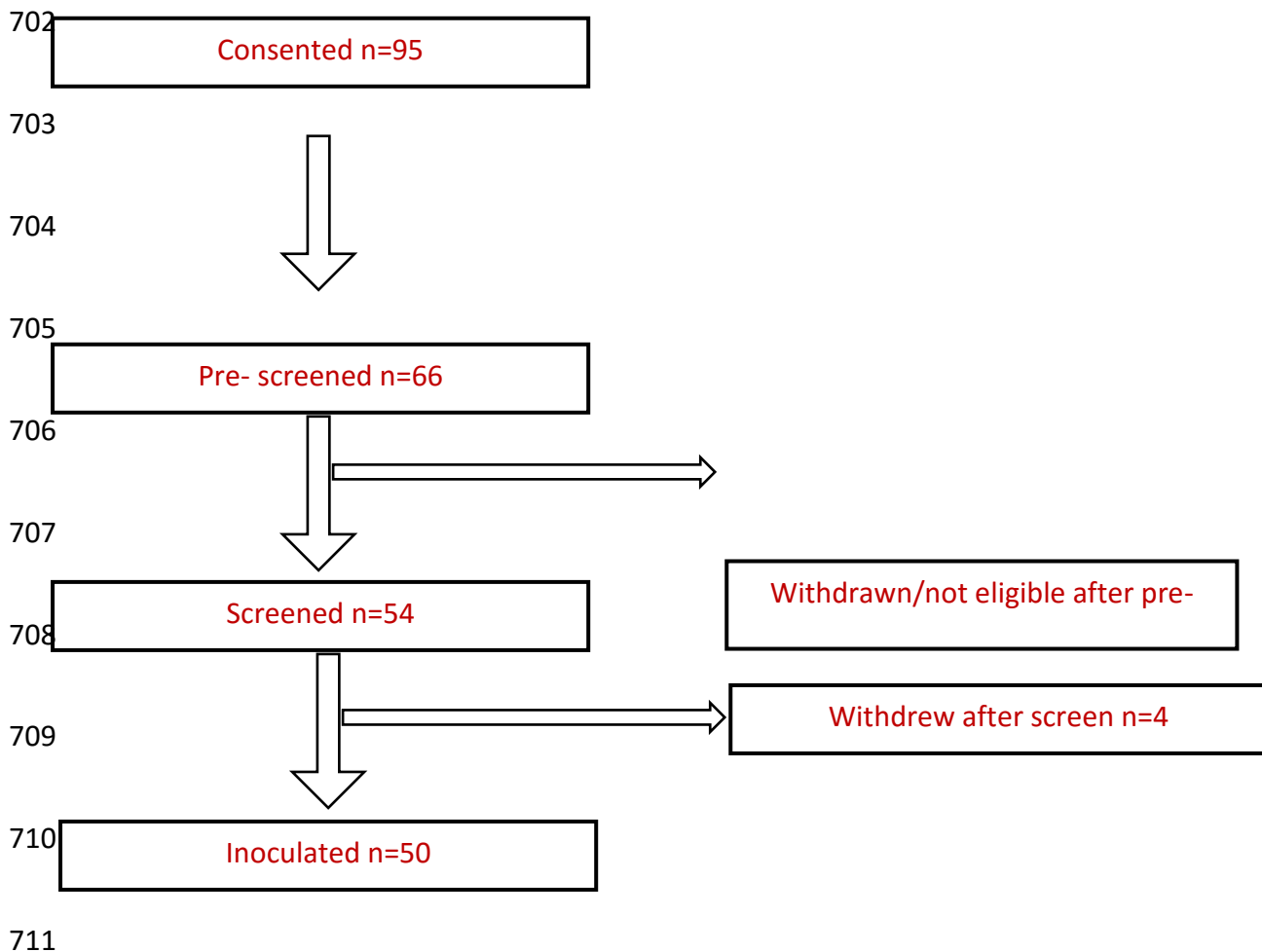
697

698

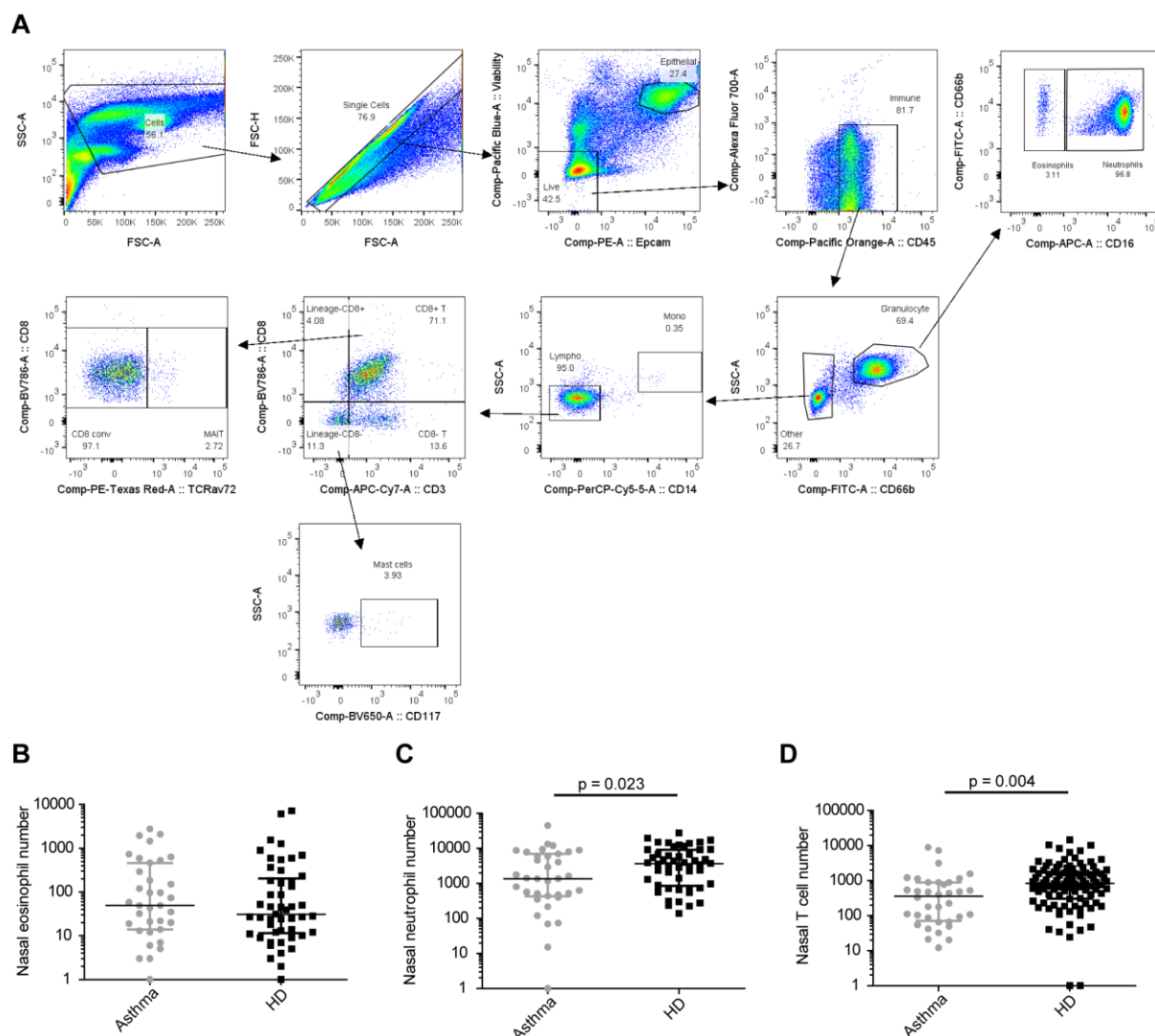
699

700

701



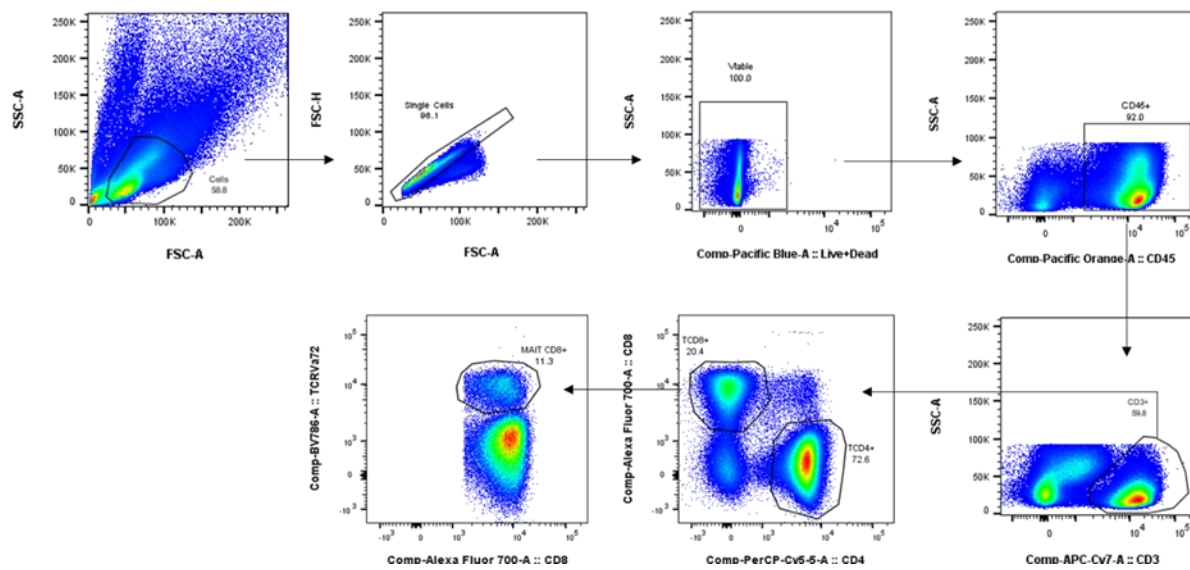
712 *Figure E2: Recruitment: Flow chart showing recruitment and retention numbers. Reasons for*
713 *withdrawal: Not on inhaled corticosteroids (ICS) n=17, unable to contact after consent n=5,*
714 *medical placement n=2, ICS dose too high n=2, n=1 for each of the following: not using ICS as*
715 *prescribed, moved out of the area, no reason stated, personal reasons, high white cell count,*
716 *headaches daily, penicillin allergy, bronchiectasis, using non-invasive ventilation, withdrew*
717 *consent, >3 exacerbations in the preceding 12 months, proven pneumococcal pneumonia. One*
718 *participant was excluded after day 2 as they had low peak expiratory flow rate (PEFR) and had*
719 *to increase ICS, thus exceeding the 800µg budesonide equivalent threshold.*



721

722 Figure E3: Nasal cell phenotyping. A) Flow cytometry gating strategy for nasal cells from one
 723 representative participant with asthma. Numbers of acquired B) eosinophils, C) neutrophils
 724 and D) T cells from the nose at baseline for asthmatic (grey) and healthy (black) donors.
 725 Median and interquartile ranges are depicted, as well as results from student t-test on log-
 726 transformed data.

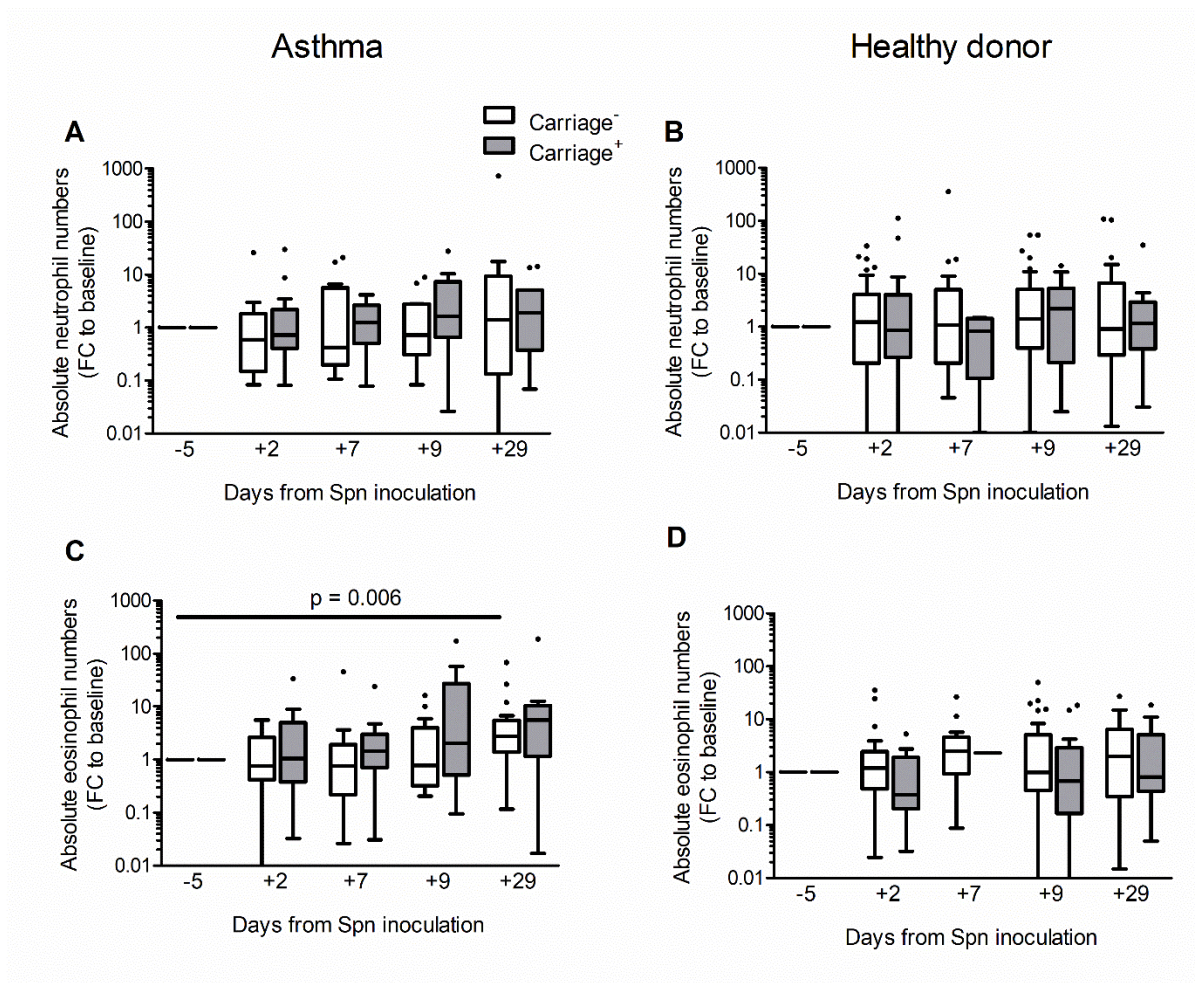
727



728

729 Figure E4: Blood MAIT cell phenotyping. Flow cytometry gating strategy for blood cells from
730 one representative participant with asthma.

731



732

733 Figure E5. Nasal neutrophil and eosinophil numbers. Baseline-normalized numbers of
734 neutrophils in A) asthma and B) healthy control. Baseline-normalized numbers of eosinophils
735 in C) asthma and D) healthy control. Tukey boxplots are presented as well as results from
736 paired-Wilcoxon rank tests compared to baseline levels (comparing the change from baseline
737 to the days 7, 9, and 29 as shown); FC= Fold Change, Spn = *S. pneumoniae*).

738

739

740

741

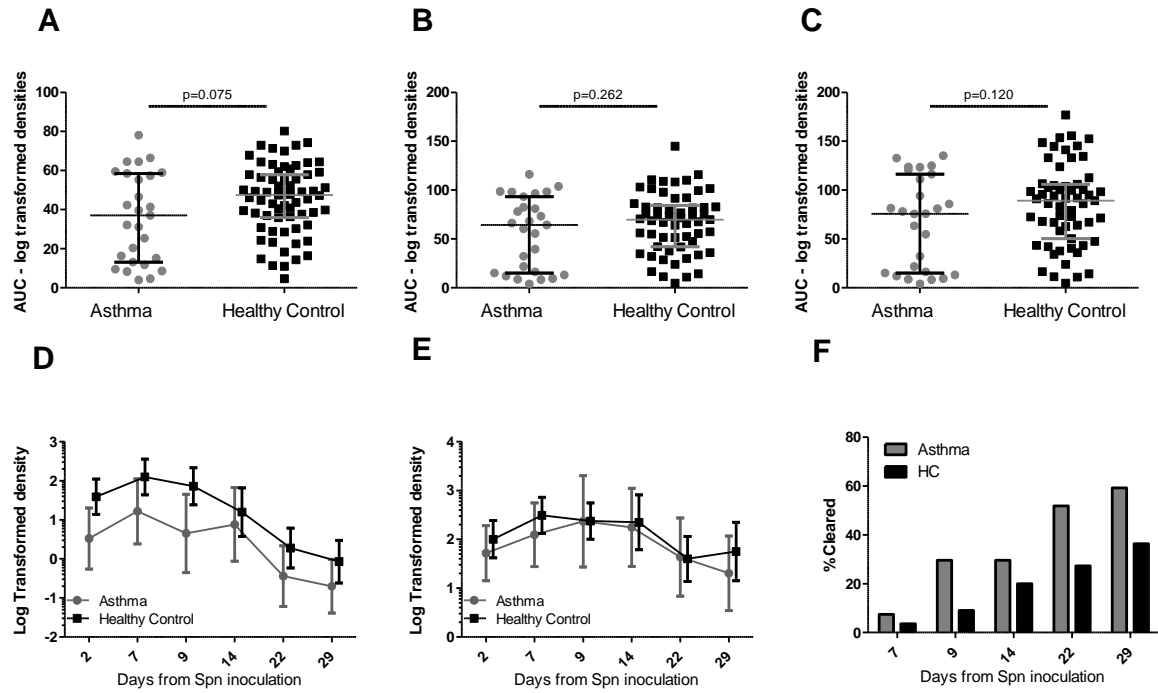


Figure 1

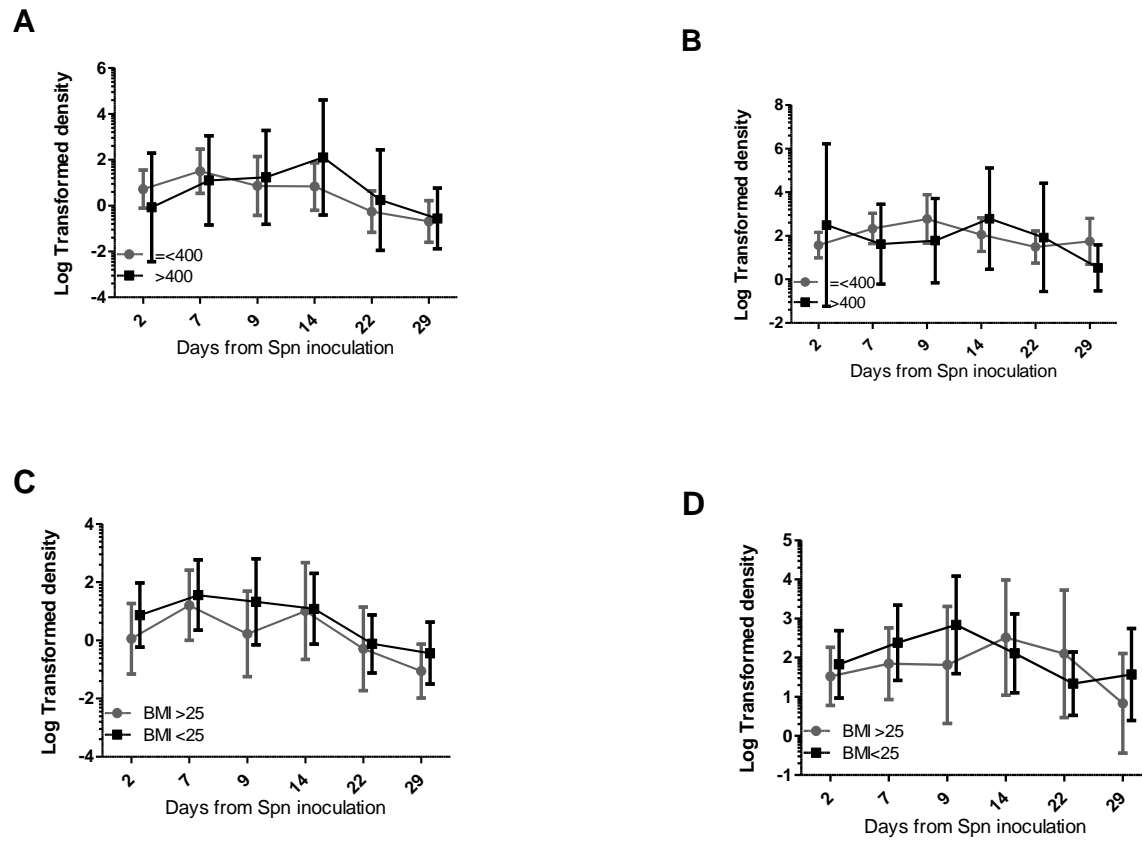


Figure 2

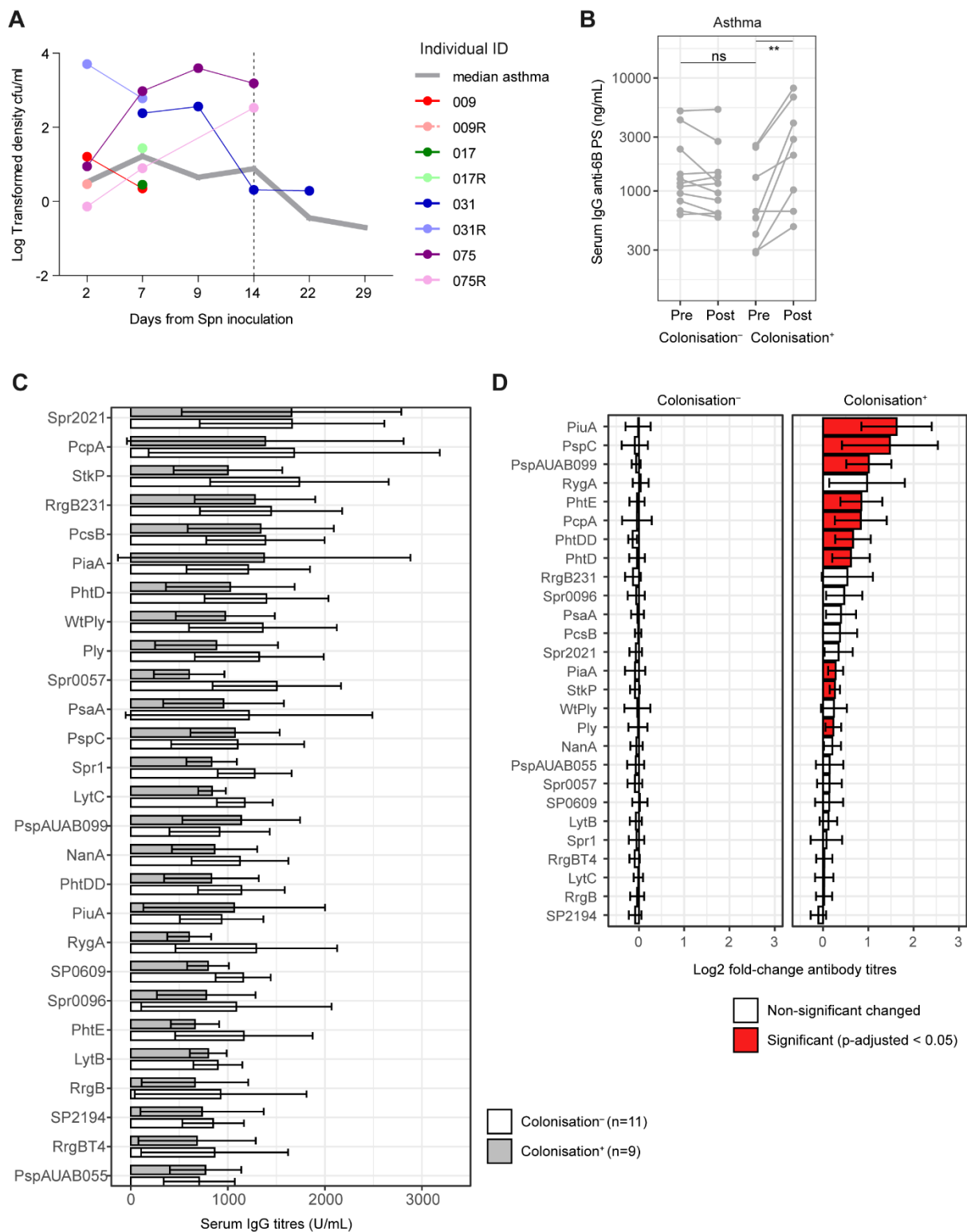


Figure 3

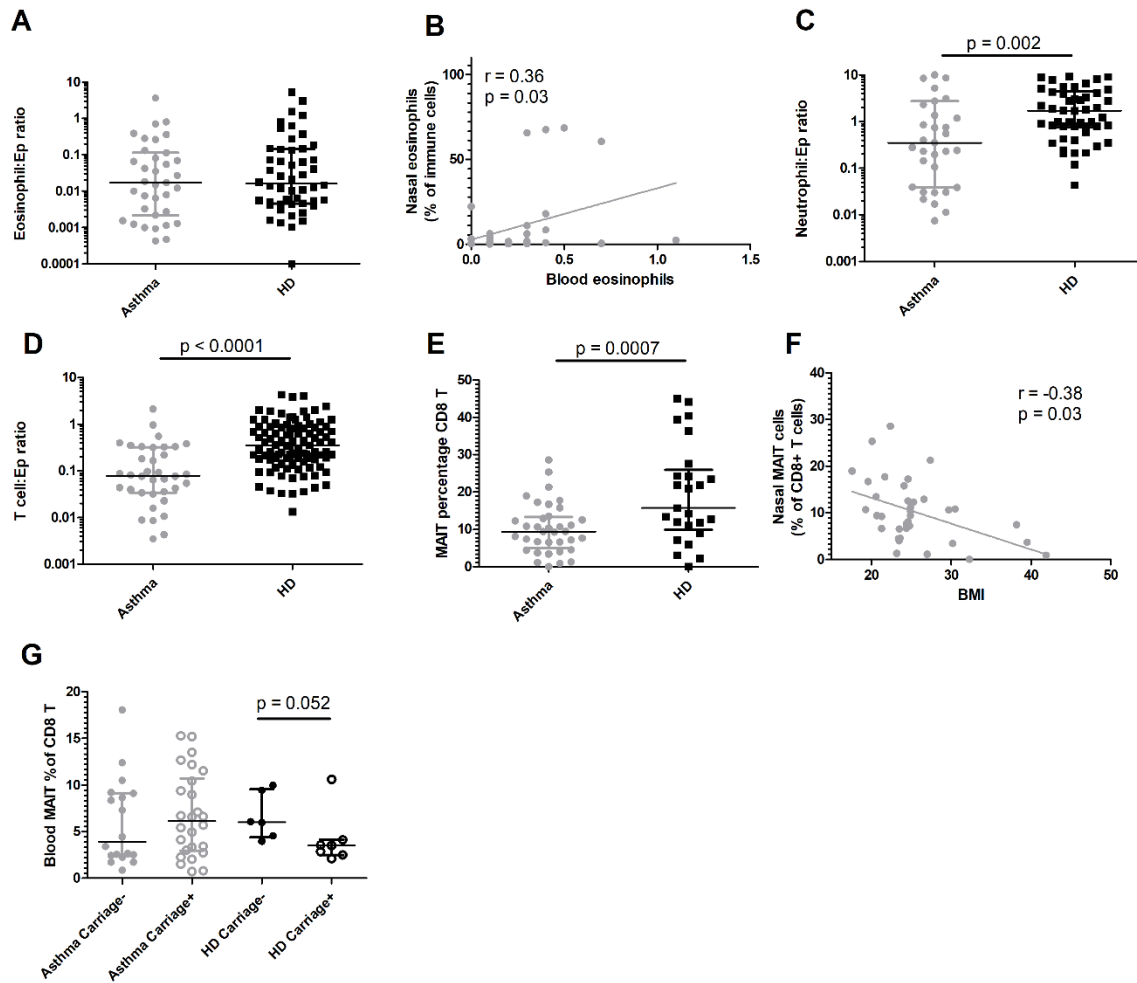


Figure 4

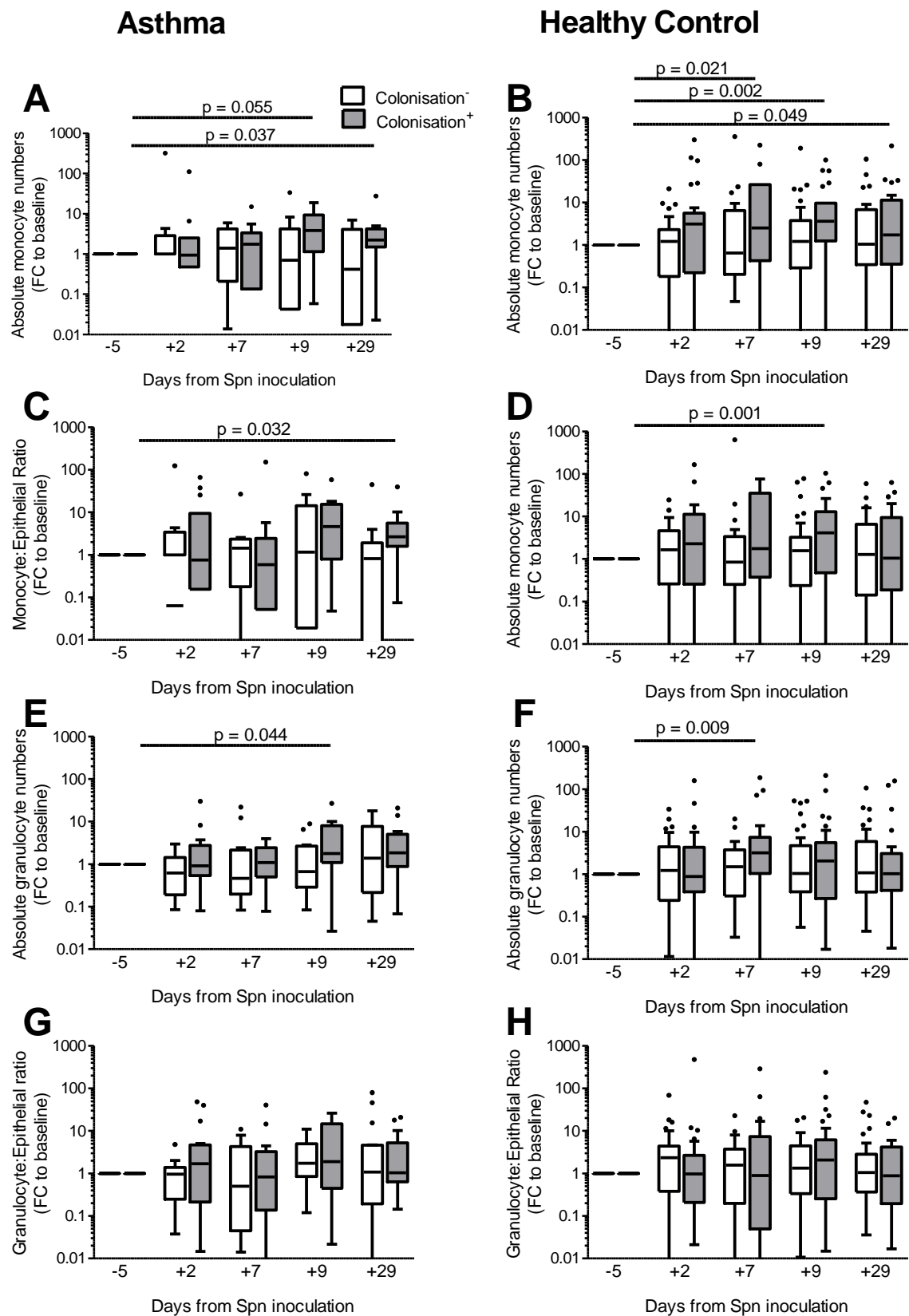


Figure 5

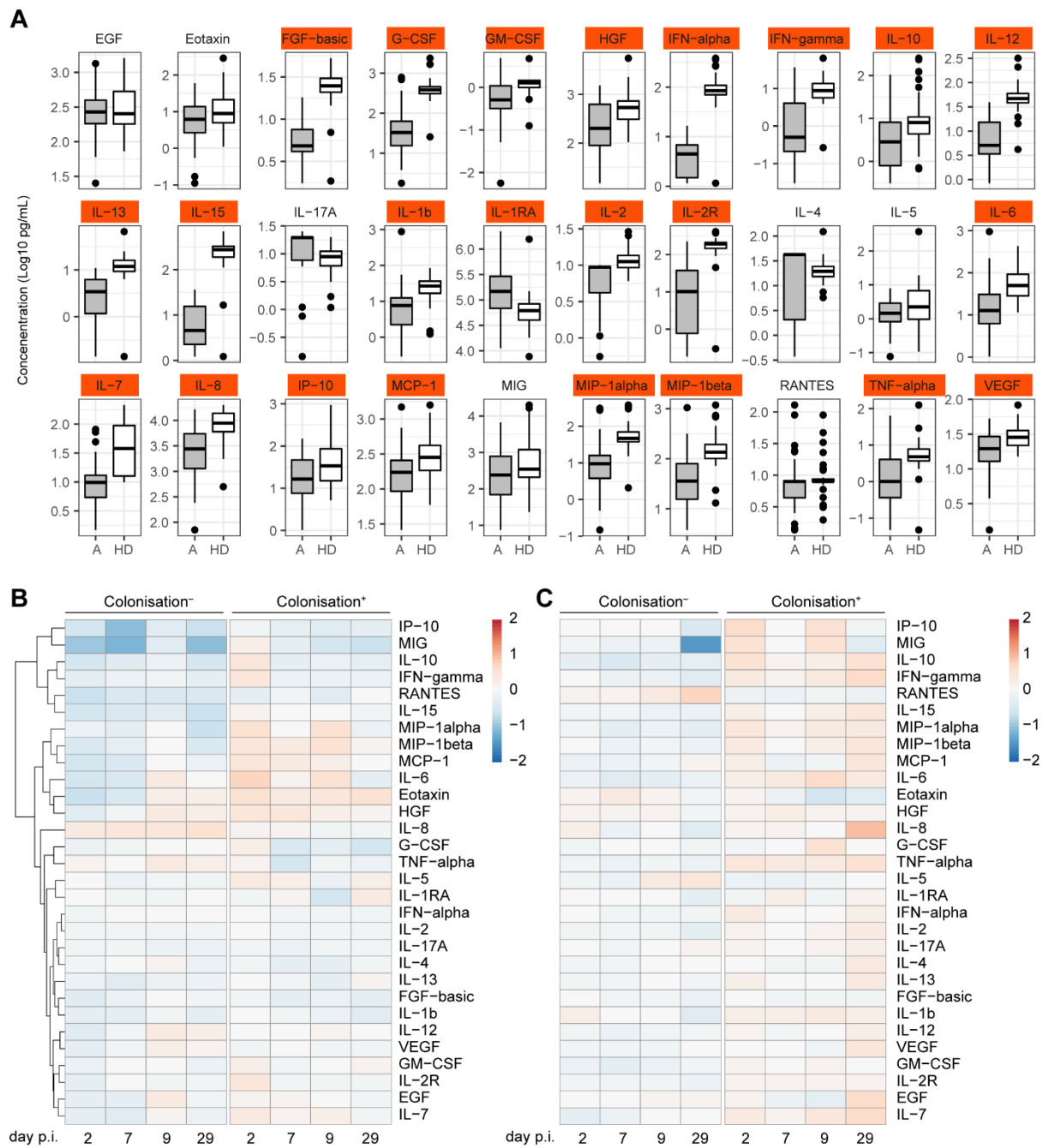


Figure 6