

1 **TITLE PAGE:**

2

3 **The Effect of Neutropenia and Filgrastim (G-CSF) in Cancer Patients With COVID-19 Infection**

4

5 Sejal Morjaria MD^{*1,12}, Allen W Zhang PhD^{*2}, Anna Kaltsas MD MS^{1,12}, Rekha Parameswaran³, Dhruvkumar
6 Patel MS⁴, Wei Zhou MPH, MSc^{5,6}, Jacqueline Predmore¹, Rocio Perez-Johnston MD^{3,7}, Justin Jee MD, PhD⁸,
7 Miguel-Angel Perales^{9,13}, Anthony F. Daniyan MD^{11,12,13}, Ying Taur MD MPH^{1,12}, Sham Mailankody MD^{11,12,13}

8

9

10 **Author Affiliations:**

11 ¹Infectious Disease, Department of Medicine, Memorial Sloan Kettering Cancer Center, NY, NY

12 ²MD/PhD Program, Faculty of Medicine, University of British Columbia, Vancouver, BC, Canada

13 ³Hematology Service, Department of Medicine, Memorial Sloan Kettering Cancer Center, NY, NY

14 ⁴Department of Quality and Safety, Memorial Sloan Kettering Cancer Center, NY, NY

15 ⁵Operation Excellence, Memorial Sloan Kettering Cancer Center, NY, NY

16 ⁶Advanced Practice Provider Department, Memorial Sloan Kettering Cancer Center, NY, NY

17 ⁷Department of Radiology, Memorial Sloan Kettering Cancer Center, NY, NY

18 ⁸Department of Medicine, Memorial Sloan Kettering Cancer Center, NY, NY, USA

19 ⁹Adult Bone Marrow Transplantation Service, Department of Medicine, Memorial Sloan Kettering, NY, NY

20 ¹⁰Leukemia Service, Memorial Sloan Kettering Cancer Center, NY, NY

21 ¹¹Myeloma Service, Memorial Sloan Kettering Cancer Center, NY, NY

22 ¹²Cellular Therapeutics Center, Memorial Sloan Kettering Cancer Center, NY, NY

23 ¹³Weill Cornell Medical College, NY, NY

24 *SM and AZ are co-first authors; AD, YT, and SM are co-senior authors

25 **Corresponding Author Contact Information:**

26 **Sham Mailankody, MBBS**

27 Memorial Sloan Kettering Cancer Center

28 1275 York Ave, New York, NY 10065

29 Phone: 212-639-2131; Fax: 929-321-8155; Email: mailanks@mskcc.org

30

31

32 **Background:**

33 Neutropenia is commonly encountered in cancer patients, and recombinant human granulocyte colony-
34 stimulating factor (G-CSF, filgrastim) is widely given to oncology patients to counteract neutropenia and
35 prevent infection. G-CSF is both a growth factor and cytokine that initiates proliferation and
36 differentiation of mature granulocytes. However, the clinical impact of neutropenia and G-CSF use in
37 cancer patients, who are also afflicted with coronavirus disease 2019 (COVID-19), remains unknown.

38 **Methods:**

39 An observational cohort of 304 hospitalized patients with COVID-19 at Memorial Sloan Kettering Cancer
40 Center was assembled to investigate links between concurrent neutropenia (N=55) and G-CSF
41 administration (N=16) on COVID-19-associated respiratory failure and death. These factors were assessed
42 as time-dependent predictors using an extended Cox model, controlling for age and underlying cancer
43 diagnosis. To determine whether the degree of granulocyte response to G-CSF affected outcomes, a
44 similar model was constructed with patients that received G-CSF, categorized into “high”- and “low”-
45 response, based on the level of absolute neutrophil count (ANC) rise 24 hours after growth factor
46 administration.

47 **Results:**

48 Neutropenia (ANC < 1 K/mcL) during COVID-19 course was not independently associated with severe
49 respiratory failure or death (HR: 0.71, 95% CI: 0.34-1.50, *P* value: 0.367) in hospitalized COVID-19 patients.
50 When controlling for neutropenia, G-CSF administration was associated with increased need for high
51 oxygen supplementation and death (HR: 2.97, 95% CI: 1.06-8.28, *P* value: 0.038). This effect was
52 predominantly seen in patients that exhibited a “high” response to G-CSF based on their ANC increase
53 post-G-CSF administration (HR: 5.18, 95% CI: 1.61-16.64, *P* value: 0.006).

54 **Conclusion:**

55 Possible risks versus benefits of G-CSF administration should be weighed in neutropenic cancer patients
56 with COVID-19 infection, as G-CSF may lead to worsening clinical and respiratory status in this setting.

57 **Introduction:**

58 Neutropenia is a common side-effect of anti-cancer therapies, and recombinant human granulocyte
59 colony stimulating factor (G-CSF, filgrastim) is often given to cancer patients for ongoing or impending
60 neutropenia. During the ongoing SARS-CoV-2 pandemic, there is uncertainty about the effect of
61 commonly used medications like G-CSF on clinical outcomes. The mechanism of action of G-CSF
62 (stimulates both cytokine and neutrophil production),¹ the association of G-CSF with acute lung injury
63 (ALI) or adult respiratory distress syndrome (ARDS),^{2,3} and what is now known about the pathogenesis of
64 COVID-19- resulting in cytokine storm in some patients, has raised concerns about the safety profile of G-
65 CSF in COVID-19 patients. Moreover, lung findings from autopsies of COVID-19 patients have shown
66 neutrophil extravasation in the alveolar space,^{4,5,6} raising concerns that G-CSF administration and the
67 resultant neutrophil expansion, could to lead to exaggerated neutrophil responses, thereby worsening
68 clinical outcomes in COVID-19 patients.

69 Our group published a case series describing the rapid clinical deterioration of three COVID-19 patients
70 soon after receiving G-CSF. Herein, we sought to quantitatively estimate the clinical effects of G-CSF on a
71 larger cohort of COVID-19 patients.⁷ Specifically, we asked: what are the effects of neutropenia and G-CSF
72 administration on the clinical outcomes, respiratory failure or death, in patients with cancer and COVID-
73 19 infection.

74 **Methods**

75 ***Study population***

76 We included all 304 inpatients admitted within a window of [-5 days, +14 days] around a patient's COVID-
77 19-positive test date (day 0), between the dates of March 13, 2020 and May 15, 2020. Clinical outcomes
78 were monitored until May 19, 2020. If a patient reached a clinical endpoint (defined below) prior to

79 receiving G-CSF, they were excluded from the cohort. Patients with a diagnosis of acute myeloid leukemia
80 or myelodysplastic syndrome were not included in the analysis, as these patients are generally not
81 candidates for G-CSF administration. As we were primarily interested in whether or not G-CSF should be
82 administered for neutropenia in the context of a COVID-19 infection, patients that received G-CSF before
83 the first recorded occurrence of neutropenia (defined as ANC < 1 K/mcL) or prior to hospitalization were
84 excluded from the analysis. Furthermore, when stratifying patients that received G-CSF into high and low
85 responders, patients without ANC values on day 0 and day 1 of G-CSF administration were also excluded
86 from the analysis, as a log-fold change in ANC could not be computed for these patients. We define G-CSF
87 administration as the inpatient use of filgrastim or pegfilgrastim at any dose. The Memorial Sloan
88 Kettering Cancer Center (MSKCC) institutional review board approved the study.

89 ***Laboratory methods***

90 COVID-19 status was determined using a nasopharyngeal swab to determine the presence of virus specific
91 RNA (MSKCC FDA EUA-approved assay and Cepheid®). COVID-19 RNA was detected using the Centers for
92 Disease Control and Prevention protocol targeting two regions of the nucleocapsid gene (N1 and N2) with
93 modifications described elsewhere.^{8–10}

94 ***Data sources***

95 Patient data was extracted from the MSKCC electronic health record. Patient medications, demographics,
96 and outcomes (i.e. use of high-flow supplemental oxygen, mechanical ventilation or tracheostomy, and
97 death), were extracted from a standardized-input institutional database. Respiratory failure was defined
98 as oxygen supplementation of ≥ 4 liters per minute on nasal cannula, high-flow nasal cannula, or any
99 amount of oxygen on non-rebreather, Bi-Level Positive Airway Pressure (BIPAP), or mechanical
100 ventilation.

101 ***Statistical analysis***

102 In the primary analysis, we applied an extended Cox model (Cox regression model) using age (binned
103 into < 25, 25-50, 50-70, 70-80, 80-90, and >90 categories) and cancer type as time-independent
104 covariates. The first occurrence of neutropenia and the first administration of G-CSF (filgrastim or
105 pegfilgrastim) following COVID-19 positivity were introduced as binary time-dependent covariates in the
106 model. To minimize reverse causality, and since the earliest evidence of ANC recovery we had was a day
107 after G-CSF administration with few changes in the successive days, G-CSF events were encoded 1 day
108 following actual administration, to capture the timing of its expected effect. In a second analysis, G-CSF
109 response was additionally categorized into “high-response” and “low-response” groups and introduced
110 as mutually exclusive binary time-dependent covariates. High response was defined as a >
111 50th percentile increase in ANC at day 1 post-G-CSF administration (compared to ANC values prior to G-
112 CSF administration) across all cases of G-CSF administration. For our cohort, this corresponded to an
113 increase in ANC of at least fourfold from day 0 to day 1 after G-CSF administration.

114 For survival analysis, starting time was defined as the time of COVID-19 diagnosis for each patient. To
115 verify that the significant hazard ratio associated with G-CSF administration was not solely due to
116 collinearity between the neutropenia and G-CSF variables, we also considered an alternative formulation
117 of the model, where starting time was instead defined as the time of first occurrence of neutropenia. The
118 number of days prior to neutropenia was added as a continuous time-independent variable to the model.

119 The primary analysis was conducted using a composite endpoint defined as the first occurrence of
120 respiratory failure (defined above) or death following COVID-19 diagnosis. For the alternate analysis, we
121 excluded death as an endpoint and only looked at patients that developed respiratory failure, as patients
122 that died without oxygen supplementation (n = 3) may have died of non-COVID-19-related causes.

123 All patient events were right-censored at the date of last follow-up or May 19, 2020. All analysis was
124 performed in R version 3.6.2 with the survival (version 3.1-11) and survminer (version 0.4.7) packages.¹¹
125

126 **Results**

127 We assembled a cohort of 304 hospitalized patients with cancer who tested positive for COVID-19 at
128 MSKCC between the dates of March 13, 2020 and May 15, 2020. These cases comprised a variety of cancer
129 types, including gastrointestinal malignancies (n=45, 14.8%), lung cancers (n=41, 13.5%), non-Hodgkin
130 lymphomas (n=39, 12.8%), and breast cancers (n=37, 12.2%), among others. In total, 55 (18.1%) patients
131 were neutropenic at some point during hospitalization, as defined by an ANC less than 1 K/mcL. Of these,
132 16 (48.4%) of patients received either filgrastim or pegfilgrastim (G-CSF) for neutropenia. A total of 103
133 (33.9%) patients reached the primary endpoint: the development of respiratory failure. The patient
134 characteristics of all patients (n=304) are shown in **Table 1**.

135 The key clinical timepoints for patients (neutropenia, G-CSF administration, respiratory failure, or death)
136 for each patient (*prior to applying exclusion criteria) above are shown in **Figure 1**. The patient
137 characteristics of neutropenic inpatients that did (n=29) and did not receive G-CSF (n=55) are shown in
138 **Table S1**. Patient characteristics of both inpatients and outpatients with COVID-19 infection that did and
139 did not receive G-CSF with their clinical outcomes are shown in **Tables S2-S3**. A total of nine of 29
140 inpatients (31%) receiving G-CSF before application of exclusion criteria required >4L oxygen, compared
141 with 94 of 275 (34%) patients not receiving G-CSF.

142 A total of 16 patients were counted as having received G-CSF, based on our definition. To evaluate the
143 effect of neutropenia and G-CSF use on our primary composite endpoint defined as respiratory failure and
144 death from COVID-19, we applied an extended Cox model controlling for age and neutropenia while
145 stratifying by underlying cancer diagnosis (see Methods). As expected, age at enrollment greater than 90
146 (HR: 7.29, 95% CI: 2.72-19.52, *P* value: <0.001) was associated with significantly worse outcomes. In
147 contrast, being less than 50 years of age was associated with better outcomes. G-CSF use (HR: 2.97, 95%
148 CI: 1.06-8.28, *P* value: 0.038; **Figure 2**), but not neutropenia alone (HR: 0.71, 95% CI: 0.34-1.49, *p* value:
149 0.364), portended significantly worse outcomes in a multivariate model. These results were consistent

150 with those obtained using respiratory failure alone as the endpoint (HR: 3.01, 95% CI: 1.08-8.39, *P* value:
151 0.035; **Figure S1**), or when considering only neutropenic patients and using time of neutropenia as $t=0$
152 (HR for G-CSF: 4.62, 95% CI: 1.08-19.7, *P* value: 0.039; **Figure S2**).

153 To determine whether the neutrophil-inducing properties of G-CSF may relate to the poor outcomes
154 associated with G-CSF, we further considered the neutrophil concentrations in peripheral blood prior to
155 and immediately after G-CSF administration. As expected, ANC and ANC/ALC (ratio of absolute neutrophil
156 count to absolute lymphocyte count) values increased after G-CSF administration, and this increase was
157 predominantly limited to the day immediately following G-CSF administration (**Figure 3A,3C**). In contrast,
158 ALC values remained more constant during this 1-day period (**Figure 3B**), and thus the rise in ANC/ALC is
159 largely attributable to ANC. We stratified patients that received G-CSF ($n=16$) based on their response to
160 ANC, computed as the log fold-change between ANC values 1 day after versus the day of G-CSF (day 0)
161 administration (**Figure 4A**). High-response patients ($n=9$; **Figure 4B**) were defined as those that
162 experienced a $>4X$ rise in ANC, comprising the upper 50th percentile of the patients that received G-CSF.
163 Using these response categories, we modified the extended Cox model shown in Figure 2 to categorize G-
164 CSF events as high- and low- response. As before, age greater than 90 (HR: 7.37, 95% CI: 2.75-19.76, *P*
165 value <0.001) was significantly associated with worse outcomes.

166 There were pronounced differences in risk associated with low- and high-response to G-CSF. While low
167 response to G-CSF was not significantly associated with poorer outcomes (HR: 1.62, 95% CI: 0.40 - 6.54,
168 *P* value: 0.5), high response to G-CSF was significantly associated with poorer outcomes (HR: 5.18, 95% CI:
169 1.61-16.64, *P* value: 0.006; **Figure 4B**). These results imply that the effect of G-CSF on outcomes is primarily
170 driven by patients with robust increases in ANC following G-CSF administration. Interestingly, neutropenia
171 was not statistically associated with worse outcomes.

172 Ten of the 16 patients that were neutropenic and received G-CSF had a pre-and-post chest radiograph
173 and 6/10 (60%) demonstrated radiologic worsening within 7 days of receiving G-CSF (**Table S4**); 3 patients
174 that developed radiographic deterioration post-G-CSF use are shown in **Figure S3**.

175 **Discussion**

176 The COVID-19 pandemic has made delivering effective cancer care -- already a challenging endeavor --
177 more difficult, given the balancing of competing risks of death from untreated cancer versus death or
178 serious complications from COVID-19 infection.^{12, 13, 14, 8, 15, 16} In this study, we evaluate the potential
179 impact of neutropenia and G-CSF use in cancer patients with concurrent COVID-19 infection. We observed
180 a higher likelihood of respiratory failure and death in patients that received G-CSF, particularly in the
181 subset of patients that exhibited a “high” response to G-CSF. Our observations also suggest that
182 neutropenia during COVID-19 illness itself was not an independent risk factor for adverse outcomes in
183 COVID-19 illness.

184 From published reports, it is becoming increasingly clear that rapid clinical deterioration can occur in some
185 patients because of the hyperactive immune response driving COVID-19 progression, causing an
186 overwhelming infiltration of inflammatory myeloid cells into the lungs (particularly monocytes,
187 macrophages and neutrophils),^{4,17-19} the so-called “cytokine storm”. Zuo et al. used cell-free DNA as a
188 marker to detect neutrophil extracellular trap (NET) remnants in the blood and noted that these appeared
189 strongly correlated with absolute neutrophil counts, and elevated blood neutrophils forecast worst
190 outcomes.⁶ Lung injury is one consequence of the cytokine storm that can progress into ALI or its more
191 severe form, ARDS.²⁰ Considering that neutrophil influx in the lung is a hallmark feature of ARDS,²¹ and
192 that ALI has already been reported as a potential complication of G-CSF use,^{2,3} administering G-CSF to
193 certain cancer patients with COVID-19 for neutropenia may give clinicians pause. Similar concerns exist
194 for patients who receive chimeric antigen receptor T (CAR-T) cell therapy,²² where G-CSF administration

195 is generally avoided to prevent the overactivation of the immune system, given the already increased risk
196 for cytokine storm.

197 To best estimate the effects of neutropenia and G-CSF on our defined clinical outcomes, we encoded G-
198 CSF as a time-dependent covariate, while controlling for neutropenia as another time-dependent
199 covariate. We also compared the clinical outcomes of patients that had different levels of response to G-
200 CSF, finding that robust G-CSF neutrophil response was associated with substantially higher hazard (HR:
201 5.18, 95% CI: 1.61-16.64, *P* value: 0.006) for respiratory decompensation, compared to those that had less
202 robust levels of response to G-CSF (HR: 1.62, 95% CI: 0.40-6.54, *P* value: 0.500). We also show that soon
203 after G-CSF administration, there is a substantial increase in the neutrophil to lymphocyte ratio (ANC/ALC),
204 previously shown to be an independent risk factor for mortality in hospitalized patients with COVID-19.²³
205 To our knowledge, this is the first study describing the course of COVID-19 infection in selected cancer
206 patients who received G-CSF for neutropenia.

207 This study is not without its limitations. The study ultimately included a modest number of patients
208 receiving G-CSF (N=16). In this observational cohort, unaccounted confounding factors are plausible. This
209 analysis attempted to assess G-CSF over a wide range of cancers; tumor-specific effects were difficult to
210 ascertain. We also limit our primary analysis to the subset of patients who were hospitalized, to be able
211 to assess our clinical endpoints of interest (respiratory failure or death). As a result, the potential for G-
212 CSF to worsen outcomes, suggested here, may not be generalizable to outpatients. While our analysis
213 adjusts for the neutrophil count prior to G-CSF administration, we have not incorporated data on
214 concurrent therapies such as chemotherapies or surgery prior to the diagnosis of COVID-19 in these
215 patients.

216 Interestingly, in lieu of the COVID-19 pandemic, the National Comprehensive Cancer Network and the
217 American Society of Clinical Oncology have released updated guidelines on this very issue, lowering the
218 threshold for the use of G-CSF to now include those chemotherapy regimens that carry a 10 to 20 percent

219 risk of fever in the setting of neutropenia²⁴. Although there is a potential role for G-CSF and its prophylactic
220 use following the administration of chemotherapy when neutropenia is anticipated (primary prophylaxis)
221 and during retreatment after a previous cycle of chemotherapy had caused fever during neutropenia
222 (secondary prophylaxis),²⁵ G-CSF has not definitively been shown to actually reduce infection-related
223 mortality.^{26,27,28} Its benefits therefore must be carefully weighed against the potential risk of harm in the
224 patient with cancer and active COVID-19 infection, particularly one requiring hospitalization. Until
225 additional data from larger studies are available, in areas with high or increasing incidence of COVID-19,
226 perhaps the use of G-CSF in patients with confirmed COVID-19 could be reserved for those patients who
227 are classified as having a higher risk of complications- those that have profound neutropenia due to
228 chemotherapy.²⁹

229 **Acknowledgements:**

230 The authors would like to thank Susan Weill who works in the Design and Creative Services, Marketing
231 and Communication Department at MSKCC who helped to create the figures for this manuscript.

232 **Funding Sources:**

233 This research was supported in part by NIH/NCI Cancer Center Support Grant P30 CA008748. The content
234 is solely the responsibility of the authors and does not necessarily represent the official views of the
235 National Institutes of Health. This study was supported by the Memorial Sloan Kettering Cancer Center
236 K12 Paul Calabresi Career Development Award for Clinical Oncology (to A.F.D.) This work was further
237 supported by the Parker Institute for Cancer Immunotherapy at Memorial Sloan Kettering Cancer Center.
238 the Sawiris Foundation; the Society of Memorial Sloan Kettering Cancer Center; MSK Cancer Systems
239 Immunology Pilot Grant, and Empire Clinical Research Investigator Program, the Memorial Sloan Kettering
240 Cancer Center Department of Medicine and Weill Cornell Medicine.

241 **Competing Interests:**

242 JJ has a patent licensed by MDSeq, Inc. MAP has received honoraria from Abbvie, Bellicum, Bristol-Myers
243 Squibb, Incyte, Kite (Gilead), Merck, Novartis, Nektar Therapeutics, and Takeda; serves on DSMBs for
244 Cidara Therapeutics, Servier and Medigene, and the scientific advisory boards of MolMed and
245 NexImmune; and has received research support for clinical trials from Incyte, Kite (Gilead) and Miltenyi
246 Biotec.

247

248

249

250

251

252

253

254

255

256

257

258

259

260

261

262

263

264

265

266 **Figure Captions:**

267 **Table 1.** Demographics and baseline characteristics of all inpatients with COVID-19 (n = 304)

268 **Table S1:** Demographics and baseline characteristics of neutropenic patients that did (n= 29) and did not
269 receive G-CSF (n= 55).

270 **Table S2:** Demographics and baseline characteristics of all outpatients with COVID-19 (n = 530)

271 **Table S3:** Descriptive statistics (frequencies as %) of both inpatients and outpatients that did and did not
272 receive G-CSF and non-G-CSF with clinical endpoint. This does not account for time dependence of G-CSF
273 risk as primary analysis does

274 **Table S4:** Radiologic evolution of patients receiving G-CSF. Baseline X-Ray of patients was determined as
275 normal or abnormal if airspace or reticulonodular opacities were noted. X-Ray post G-CSF was compared
276 to baseline assessing radiologic evolution and categorizing it as: unchanged, increased or decreased.

277 **Figure 1:** Timelines of all hospitalized, neutropenic (ANC < 1 K/mcL) patients who received Granulocyte-
278 colony-stimulating factor (G-CSF (top panel)) versus those patients that were neutropenic but did not
279 receive G-CSF (bottom panel) showcasing their relevant clinical endpoints (neutropenia, G-CSF
280 administration, “respiratory failure” (defined in Methods). Three patients that received G-CSF as an
281 outpatient, subsequently admitted to the hospital were counted in subsequent analysis as being
282 neutropenic but not receiving G-CSF.

283 **Figure 2:** Forest plot showing the effect (HR = Hazard Ratio) of Granulocyte colony-stimulating factor (G-
284 CSF) on the composite endpoint of the first occurrence of “respiratory failure” (defined in Methods) or
285 death. Hazard ratios were computed with an extended Cox model, using binned ages and cancer type as
286 time-independent covariates and neutropenia and G-CSF as time-dependent covariates.

287 **Figure 3.** Lab values of: Absolute Neutrophil Count (ANC (K/mcL)) **(a)**, Absolute Lymphocyte Count (ALC
288 (K/mcL)) **(b)**, and their ratio, ANC/ALC **(c)** within a 4 day window of G-CSF administration. Day 0

289 corresponds to the date of G-CSF administration. The black dashed line in each panel corresponds to the
290 average lab value per day for all patients.

291 **Figure 4: (a)** Log-fold change values of absolute neutrophil count (ANC) obtained 1 day after G-CSF
292 administration and prior to G-CSF administration for the n=25 patients that received G-CSF. Patients were
293 stratified into “high” (to the right of the dashed orange line; fourfold increase in ANC day 1 post-G-CSF)
294 or “low” (to the left of the dashed red line) responders based on these values (threshold of ANC = 2,
295 corresponding to the 50th percentile). **(b)** Forest plot showing the effect (HR = Hazard Ratio) of high- and
296 low-response to G-CSF on the first occurrence of “respiratory failure” (defined in Methods). Hazard ratios
297 were computed with an extended Cox model, using binned ages and cancer type as time-independent
298 covariates, and neutropenia and G-CSF (high- and low-response) as time-dependent covariates.

299 **Figure S1:** Forest plot showing the effect (HR = Hazard Ratio) of Granulocyte colony-stimulating factor (G-
300 CSF) on the first occurrence of “respiratory failure” (defined in Methods). Hazard ratios were computed
301 with an extended Cox model, using binned ages and cancer type as time-independent covariates and
302 neutropenia and G-CSF as time-dependent covariates.

303 **Figure S2:** Forest plot showing the effect (HR = Hazard Ratio) of G-CSF administration on the first
304 occurrence of “respiratory failure” (defined in Methods), using the time of the first occurrence of
305 neutropenia as t=0. Hazard ratios were computed with an extended Cox model, using binned ages, cancer
306 type, and the time to neutropenia (from COVID-19+ date) as time-independent covariates and G-CSF as a
307 time-dependent covariate.

308 **Figure S3: A i:** Portable chest X-Ray performed the day of G-CSF administration demonstrating right basilar
309 and left mid lung patch opacities. A ii: A day after the administration the airspace opacities increased
310 bilaterally

311 **B i:** Portable chest X-Ray performed two days prior to administration of G-CSF demonstrating bilateral
312 predominantly bibasilar patchy opacities B ii and B iii: Axial and coronal images two days post G-CSF

313 administration, demonstrating peripheral and peribronchovascular airspace opacities predominantly in

314 the lower lobes

315 C i: Portable chest X-ray at day 0 of G-CSF administration demonstrating faint right basilar opacity. C ii:

316 day 4 post G-CSF administration, bilateral patchy opacities noted involving both upper and lower zones C

317 iii: Day 13 post administration, increased bilateral diffuse reticular and airspace opacities

318

319

320

321

322

323

324

325

326

327

328

329

330

331

332

333

334

335

336

337 **References:**

- 338 1. Martins, A., Han, J. & Kim, S. O. The multifaceted effects of granulocyte colony-stimulating factor in
339 immunomodulation and potential roles in intestinal immune homeostasis. *IUBMB Life* **62**, 611–617
340 (2010).
- 341 2. Karlin, L. *et al.* Respiratory status deterioration during G-CSF-induced neutropenia recovery. *Bone*
342 *Marrow Transplant.* **36**, 245–250 (2005).
- 343 3. Wiedermann, F. J. Acute lung injury during G-CSF-induced neutropenia recovery: effect of G-CSF on
344 pro- and anti-inflammatory cytokines. *Bone Marrow Transplant.* **36**, 731–731 (2005).
- 345 4. Barnes, B. J. *et al.* Targeting potential drivers of COVID-19: Neutrophil extracellular traps. *J. Exp. Med.*
346 **217**, (2020).
- 347 5. Fox, S. E. *et al.* Pulmonary and Cardiac Pathology in Covid-19: The First Autopsy Series from New
348 Orleans. *Pathology* (2020).
- 349 6. Zuo, Y. *et al.* Neutrophil extracellular traps in COVID-19. *JCI Insight* **5**, (2020).
- 350 7. Nawar, T. *et al.* Granulocyte-colony stimulating factor in COVID-19: Is it stimulating more than just
351 the bone marrow? *Am. J. Hematol.* (2020) doi:10.1002/ajh.25870.
- 352 8. Robilotti, E. V. *et al.* Determinants of COVID-19 disease severity in patients with cancer. *Nat. Med.* 1–
353 6 (2020).
- 354 9. Website. <https://www.fda.gov/media/134922/download>.
- 355 10. Website. <https://www.cdc.gov/coronavirus/2019-ncov/downloads/rt-pcr-panel-primer-probes.pdf>.
- 356 11. Website. <http://www.R-project.org/>.
- 357 12. Calabrò, L. *et al.* Challenges in lung cancer therapy during the COVID-19 pandemic. *Lancet Respir Med*
358 **8**, 542–544 (2020).
- 359 13. Yu, J., Ouyang, W., Chua, M. L. K. & Xie, C. SARS-CoV-2 Transmission in Patients With Cancer at a
360 Tertiary Care Hospital in Wuhan, China. *JAMA Oncology* (2020) doi:10.1001/jamaoncol.2020.0980.

- 361 14. Dai, M. *et al.* Patients with cancer appear more vulnerable to SARS-COV-2: a multi-center study
362 during the COVID-19 outbreak. *Cancer Discovery* CD–20 (2020) doi:10.1158/2159-8290.cd-20-0422.
- 363 15. Kuderer, N. M. *et al.* Clinical impact of COVID-19 on patients with cancer (CCC19): a cohort study.
364 *Lancet* **395**, 1907–1918 (2020).
- 365 16. Yang, K. *et al.* Clinical characteristics, outcomes, and risk factors for mortality in patients with cancer
366 and COVID-19 in Hubei, China: a multicentre, retrospective, cohort study. *The Lancet Oncology* vol.
367 21 904–913 (2020).
- 368 17. Mehta, P. *et al.* COVID-19: consider cytokine storm syndromes and immunosuppression. *Lancet* **395**,
369 1033–1034 (2020).
- 370 18. Liao, M. *et al.* Single-cell landscape of bronchoalveolar immune cells in patients with COVID-19. *Nat.*
371 *Med.* **26**, 842–844 (2020).
- 372 19. Moore, J. B. & June, C. H. Cytokine release syndrome in severe COVID-19. *Science* vol. 368 473–474
373 (2020).
- 374 20. Shimizu, M. Clinical Features of Cytokine Storm Syndrome. in *Cytokine Storm Syndrome* (eds. Cron,
375 R. Q. & Behrens, E. M.) vol. 69 31–41 (Springer International Publishing, 2019).
- 376 21. Potey, P. M., Rossi, A. G., Lucas, C. D. & Dorward, D. A. Neutrophils in the initiation and resolution of
377 acute pulmonary inflammation: understanding biological function and therapeutic potential. *J.*
378 *Pathol.* **247**, 672–685 (2019).
- 379 22. Toxicity and management in CAR T-cell therapy. *Molecular Therapy - Oncolytics* **3**, 16011 (2016).
- 380 23. Liu, Y. *et al.* Neutrophil-to-lymphocyte ratio as an independent risk factor for mortality in hospitalized
381 patients with COVID-19. *J. Infect.* **81**, e6–e12 (2020).
- 382 24. NCCN Clinical Practice Guidelines in Oncology. https://www.nccn.org/professionals/physician_gls/.
- 383 25. Freifeld, A. G. *et al.* Clinical practice guideline for the use of antimicrobial agents in neutropenic
384 patients with cancer: 2010 update by the infectious diseases society of america. *Clin. Infect. Dis.* **52**,

- 385 e56–93 (2011).
- 386 26. Sung, L., Nathan, P. C., Lange, B., Beyene, J. & Buchanan, G. R. Prophylactic Granulocyte Colony-
387 Stimulating Factor and Granulocyte-Macrophage Colony-Stimulating Factor Decrease Febrile
388 Neutropenia After Chemotherapy in Children With Cancer: A Meta-Analysis of Randomized
389 Controlled Trials. *Journal of Clinical Oncology* vol. 22 3350–3356 (2004).
- 390 27. Bohlius, J., Reiser, M., Schwarzer, G. & Engert, A. Impact of granulocyte colony-stimulating factor
391 (CSF) and granulocyte-macrophage CSF in patients with malignant lymphoma: a systematic review.
392 *British Journal of Haematology* vol. 122 413–423 (2003).
- 393 28. Bohlius, J., Reiser, M., Schwarzer, G. & Engert, A. Granulopoiesis-stimulating factors to prevent
394 adverse effects in the treatment of malignant lymphoma. *Cochrane Database Syst. Rev.* CD003189
395 (2004).
- 396 29. Freifeld, A. G. *et al.* Executive Summary: Clinical Practice Guideline for the Use of Antimicrobial
397 Agents in Neutropenic Patients with Cancer: 2010 Update by the Infectious Diseases Society of
398 America. *Clinical Infectious Diseases* vol. 52 427–431 (2011).
- 399

Figure 1

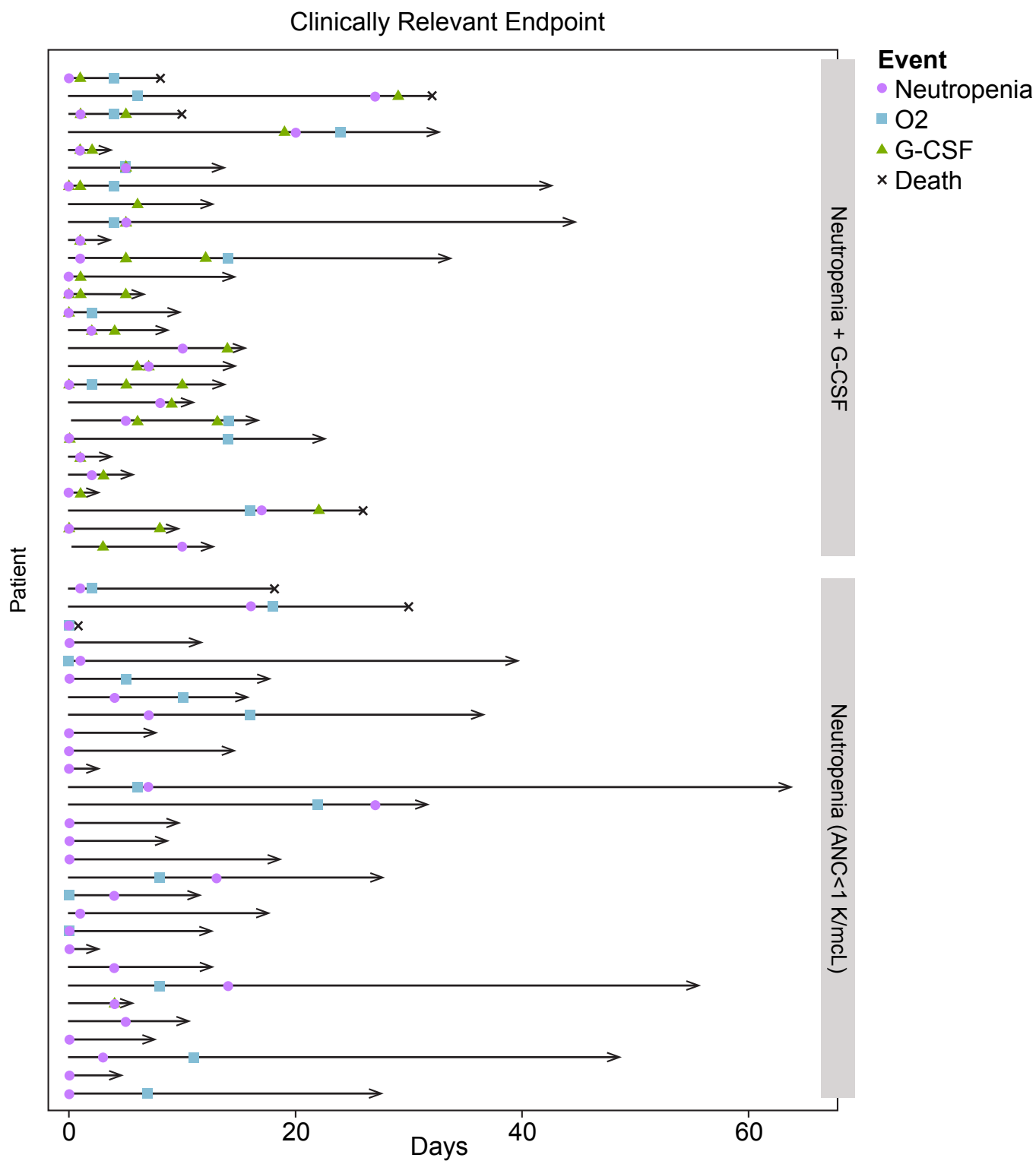


Figure 2

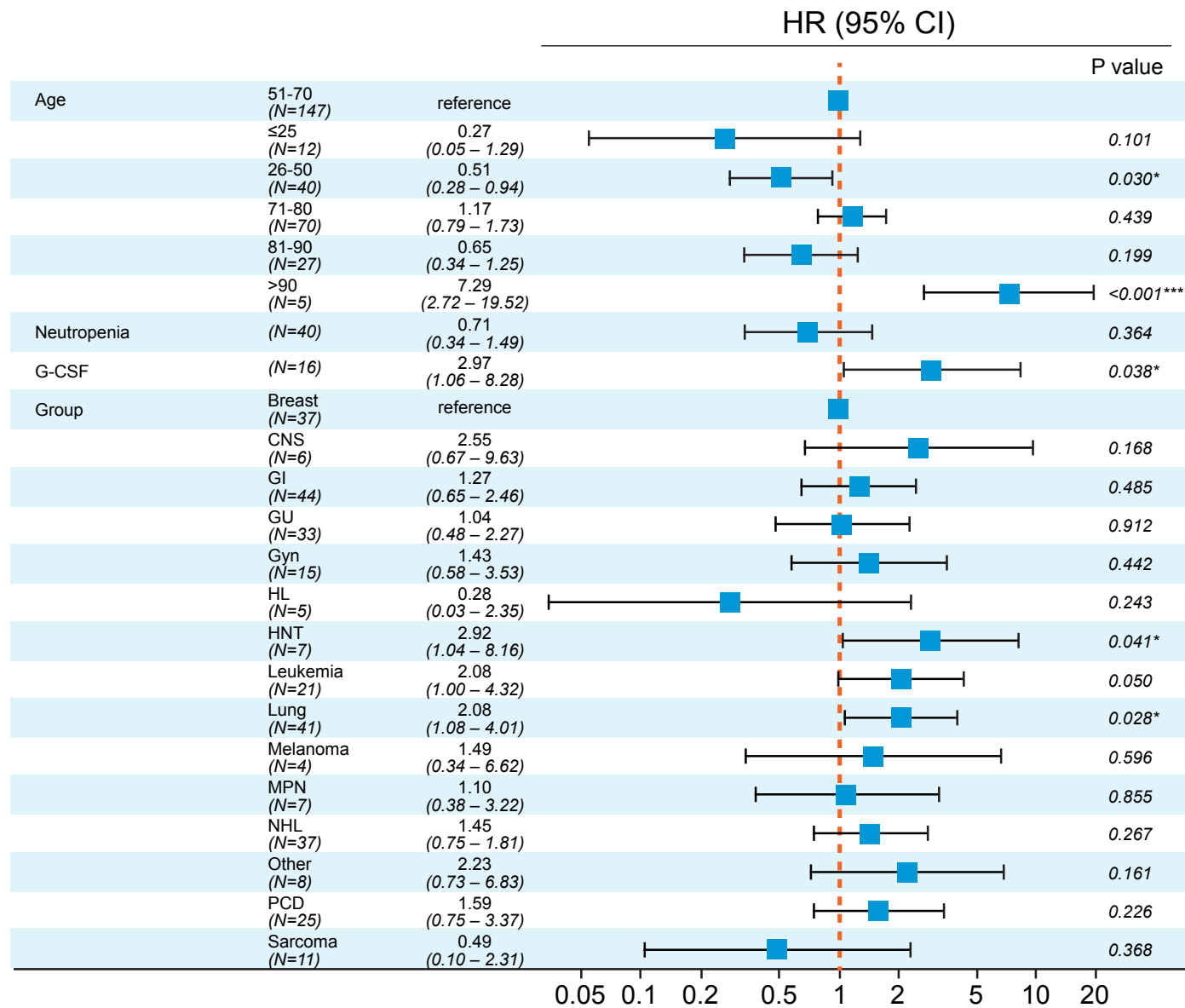


Figure 3

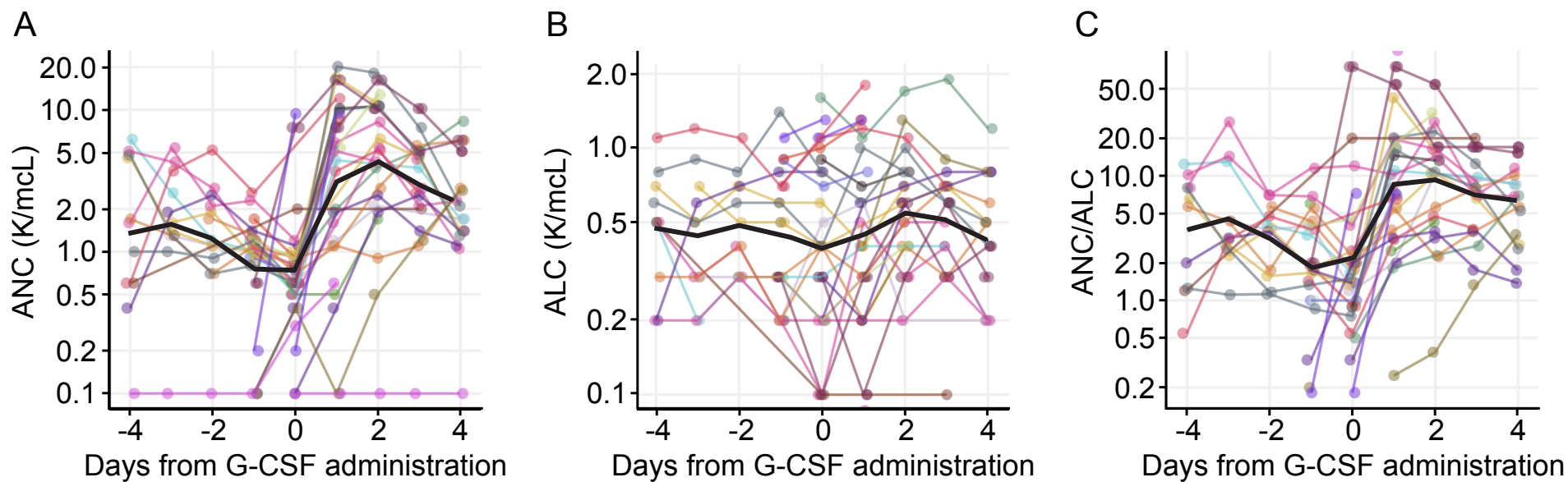


Figure 4

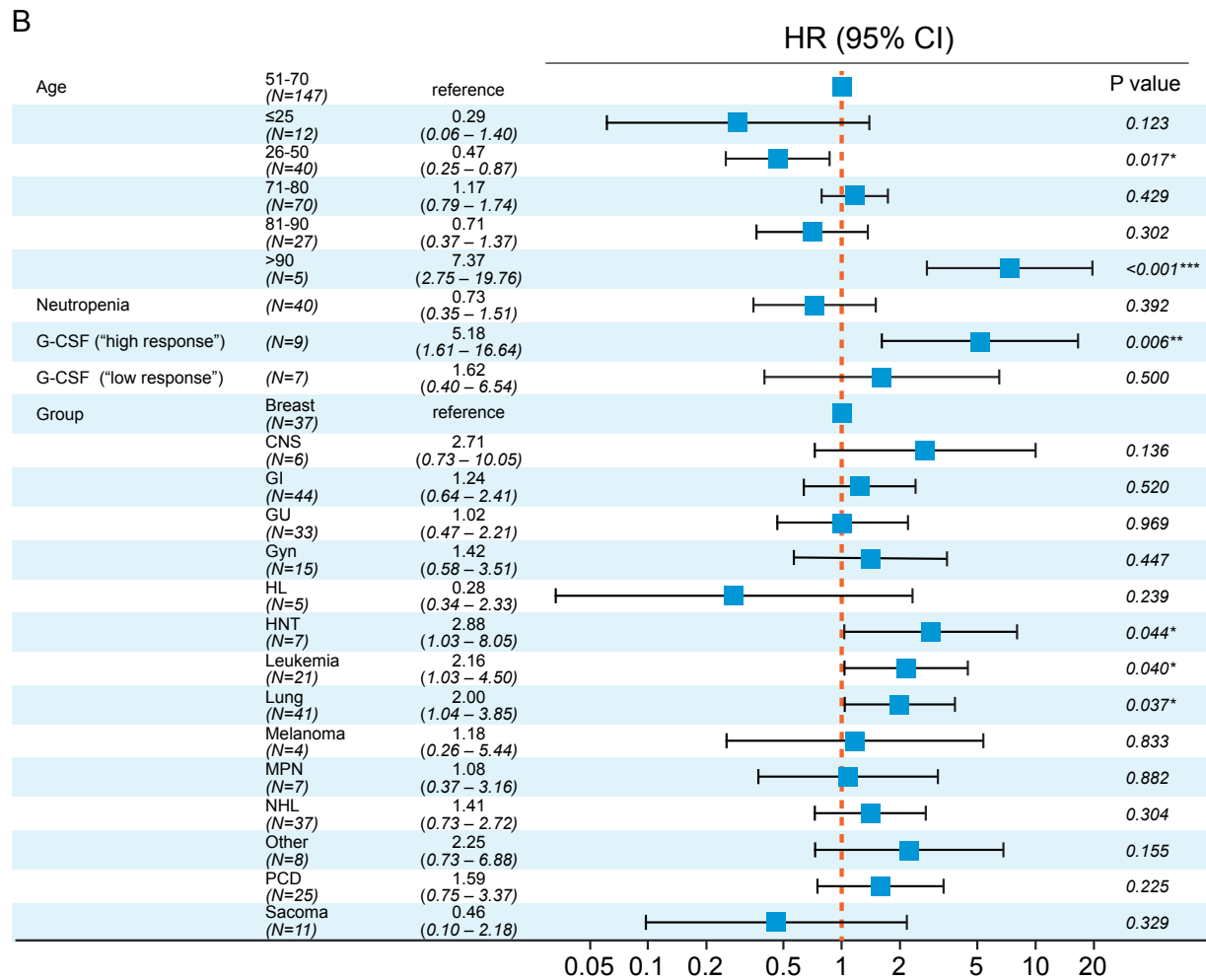
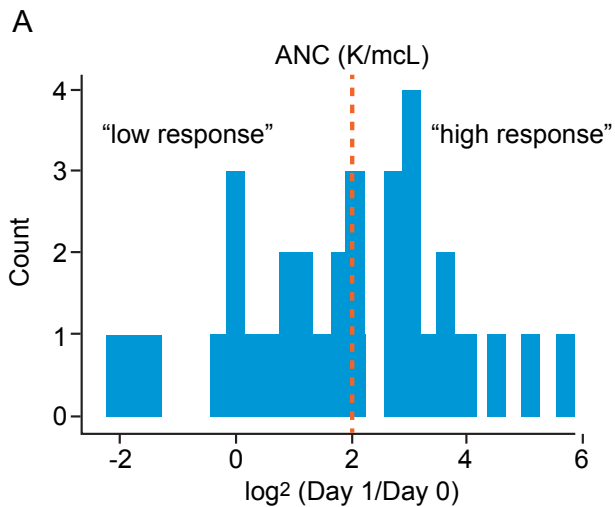


Table 1. Patient Demographics and Baseline Characteristics (n=304)

| Characteristic | Number of Patients, n (%) |
|--|---------------------------|
| Age (years) | |
| < 18 years | 10 (3.29) |
| 18-29 | 3 (0.99) |
| 30-39 | 6 (1.97) |
| 40-49 | 34 (11.2) |
| 50-59 | 59 (19.4) |
| 60-69 | 90 (29.6) |
| 70-80 | 70 (23.03) |
| 80-90 | 27 (8.88) |
| > 90 | 5 (1.64) |
| Gender | |
| Male | 144 (47.4) |
| Female | 160 (52.6) |
| Race | |
| White | 182 (59.9) |
| Black | 55 (18.1) |
| Asian | 23 (7.57) |
| Other | 44 (14.5) |
| Underlying Cancer | |
| Breast cancer | 37 (12.2) |
| CNS cancers ⁺ | 6 (1.97) |
| Germ cell tumors [Ⓛ] | 3 (1.0) |
| Lung cancer | 41 (13.5) |
| Gastrointestinal malignancies [∞] | 45 (14.8) |
| Genitourinary malignancies ^Δ | 33 (10.9) |
| Gynecologic malignancies [∇] | 15 (4.93) |
| Head and neck cancers [Ⓢ] | 7 (2.3) |
| Melanoma | 4 (1.32) |
| Sarcoma | 11 (2.1) |
| Acute and chronic leukemias [†] | 2 (6.2) |
| Plasma cell dyscrasias [‡] | 25 (8.6) |
| Myeloproliferative neoplasms [▷] | 7 (2.3) |
| Non-Hodgkin lymphoma | 39 (12.8) |
| Hodgkin lymphoma | 5 (1.64) |
| Other | 5 (1.64) |
| Neutropenia (ANC ≤ 1) | 55 (18.1) |
| All inpatient G-CSF use | |
| Filgrastim | 25 (8.22) |
| Pegylated filgrastim | 4 (1.32) |
| Neither | 275 (90.5) |
| Inpatient G-CSF use prior to combined endpoint only | |
| Filgrastim | 15 (4.93) |
| Pegylated filgrastim | 1 (0.3) |
| Neither | 288 (94.7) |
| Supplemental O2** | |
| Room air | 105 (34.5) |
| Low O2 (≤ 4 L of O2) | 45 (14.8) |
| High O2 (> 4 L of O2)*** | 103 (35.3) |
| Mechanical Ventilation | 51 (16.8) |
| Death | 53 (17.4) |

** Highest oxygen requirement during hospitalization

*** Includes high flow nasal oxygen, non rebreather mask, bilevel positive airway pressure

CNS cancers⁺ = Astrocytoma, glioblastoma, glioma, nerve sheath tumor, neuroblastoma

Germ cell tumors[Ⓛ] = Germ cell tumor and testicular cancer

Gastrointestinal malignancies[∞] = Appendiceal, cholangiocarcinoma, gallbladder, gastrin, esophageal, hepatocellular, pancreatic, rectal/colon

Genitourinary malignancies^Δ = Bladder cancer, urothelial cancer, prostate cancer, renal cell carcinoma

Gynecologic malignancies[∇] = cervical, endometrial, ovarian, uterine, vulvar

Head and neck cancers[Ⓢ] = squamous cell cancer (head and neck), adenoid cystic carcinoma, thyroid

Acute and chronic leukemias[†] = acute lymphoblastic leukemia, acute myeloid leukemia, chronic lymphoid leukemia, chronic myeloid leukemia, chronic myelomonocytic leukemia, hairy cell leukemia, myelodysplastic syndrome

Plasma cell dyscrasias[‡] = amyloidosis, multiple myeloma, monoclonal gammopathy of undetermined significance

Myeloproliferative neoplasms[▷] = aplastic anemia, immune thrombocytopenia purpura, Erdheim Chester, myelofibrosis.

Figure S1

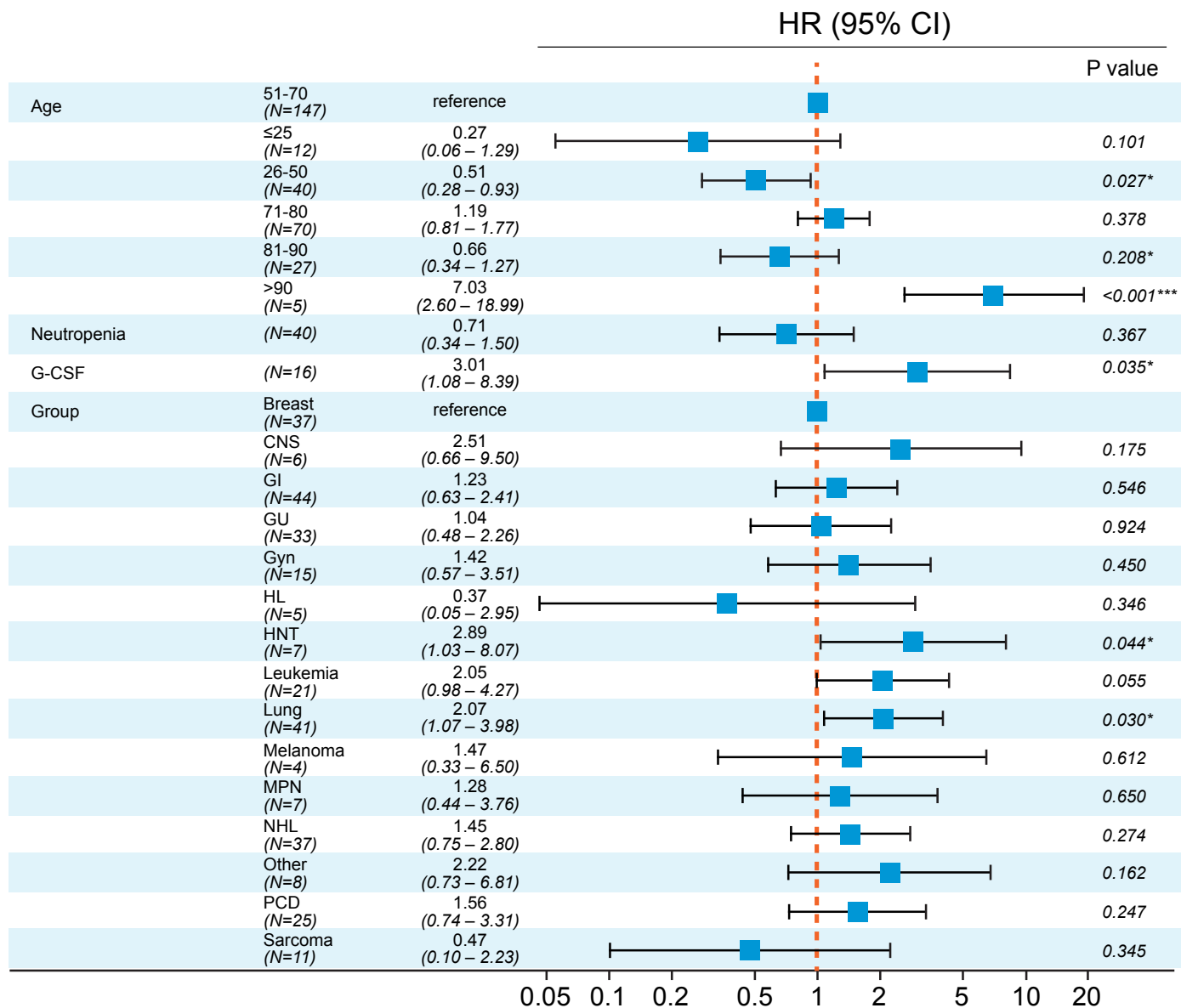


Figure S2

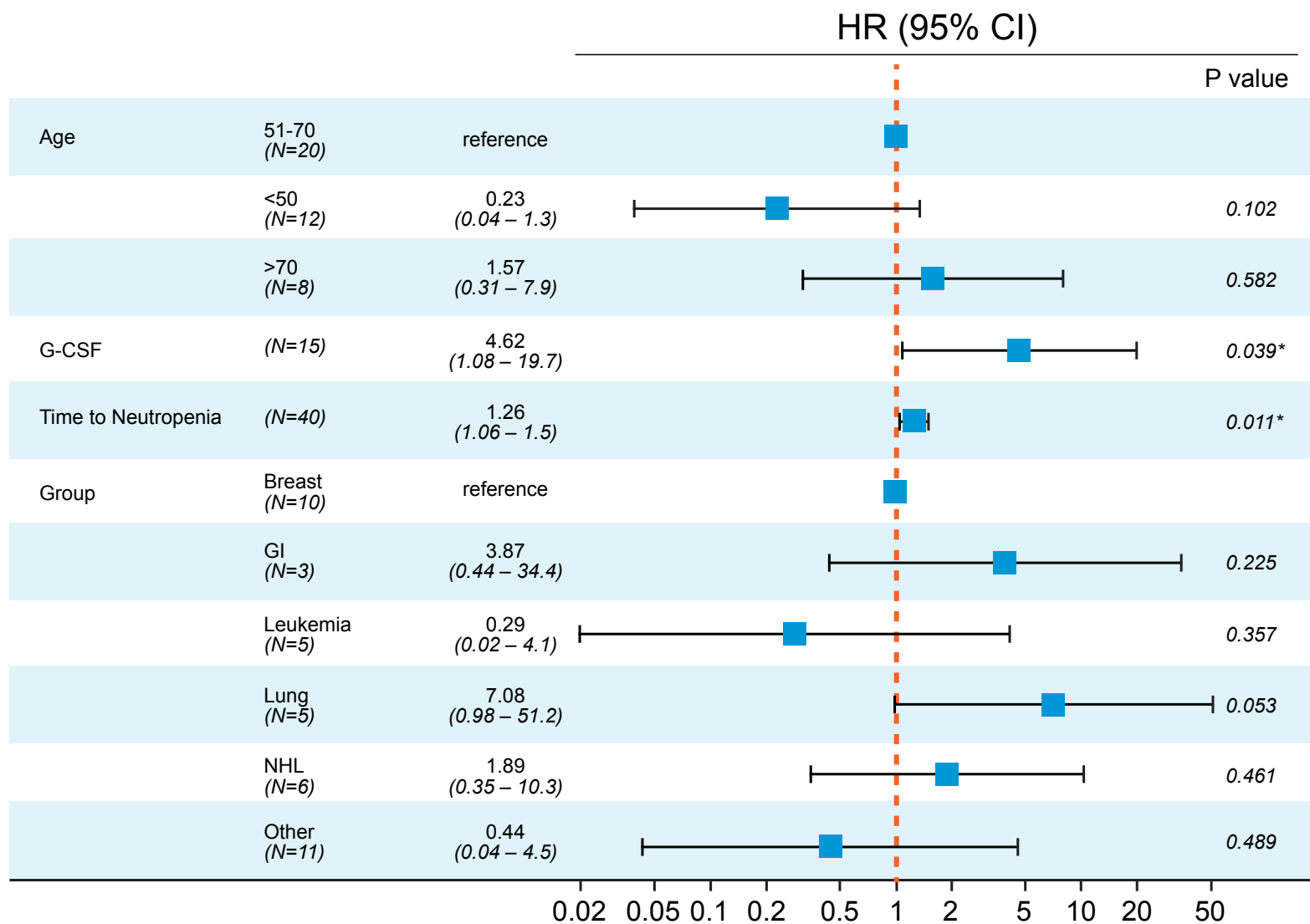
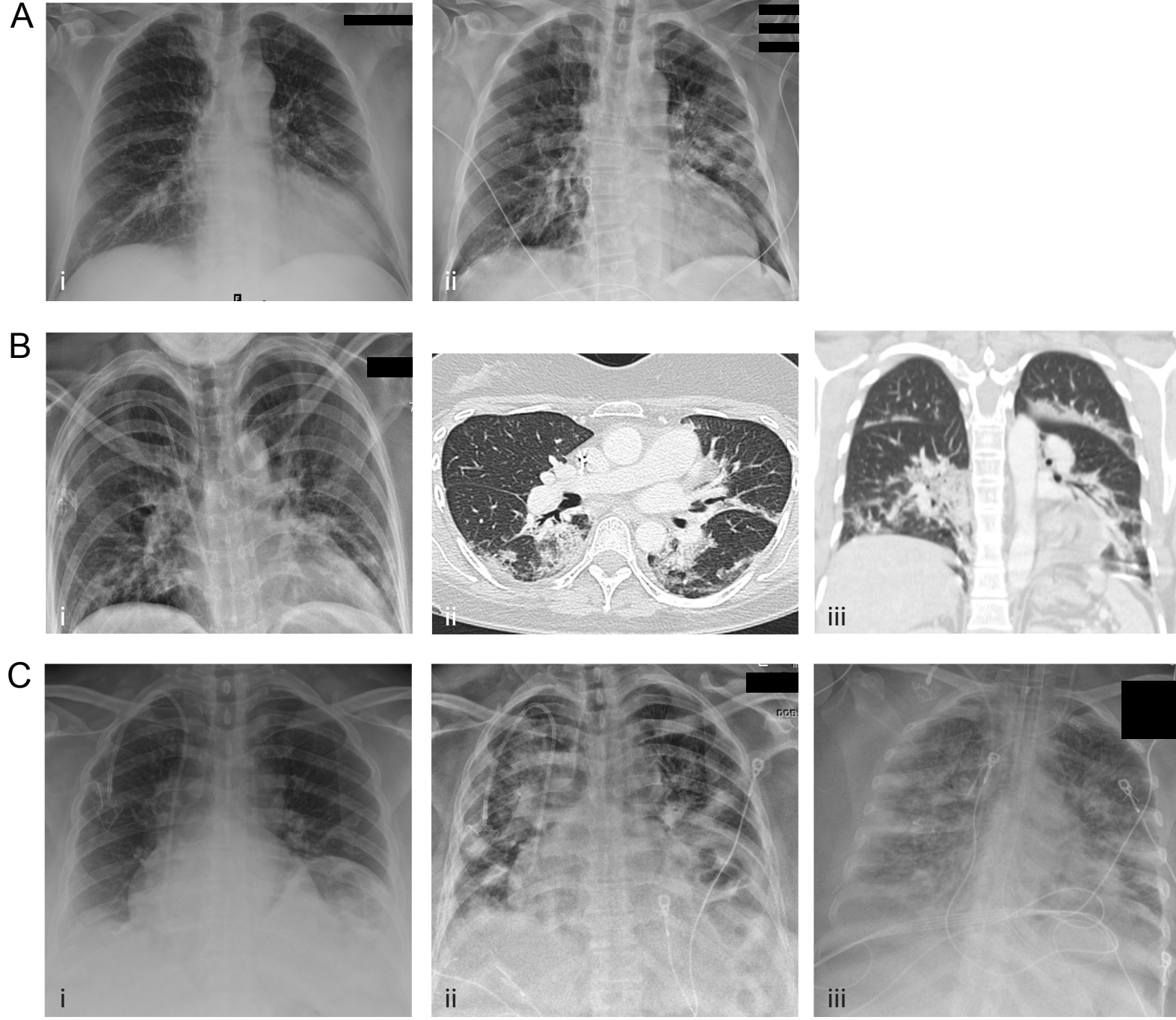


Figure S3

medRxiv preprint doi: <https://doi.org/10.1101/2020.08.13.20174565>; this version posted August 15, 2020. The copyright holder for this preprint (which was not certified by peer review) is the author/funder, who has granted medRxiv a license to display the preprint in perpetuity. All rights reserved. No reuse allowed without permission.



Supplemental Table 1. Patient Demographics and Baseline Characteristics of Patients with Neutropenia (n=55) and G-CSF use (n=29)

| Characteristic | Neutropenia (N=55), n (%) | G-CSF use (N=29), n (%) |
|--|---------------------------|-------------------------|
| Age (years) | | |
| < 18 years | 7 (12.7) | 5 (17.2) |
| 18-29 | 1 (1.8) | 0 |
| 30-39 | 1 (1.8) | 1 (3.5) |
| 40-49 | 6 (10.9) | 4 (13.8) |
| 50-59 | 17 (30.9) | 8 (27.6) |
| 60-69 | 13 (23.6) | 6 (20.7) |
| >70 years | 10 (18.2) | 5 (17.2) |
| Gender | | |
| Male | 36 (65.5) | 24 (82.8) |
| Female | 19 (35.5) | 5 (17.2) |
| Race | | |
| White | 31 (56.4) | 14 (48.3) |
| Black | 12 (21.8) | 8 (27.6) |
| Asian | 2 (3.6) | 1 (3.5) |
| Other/Inknown | 10 (18.2) | 6 (20.7) |
| Underlying Cancer* | | |
| Breast cancer | 10 (18.2) | 8 (27.6) |
| CNS ⁺ | 1 (1.8) | 1 (3.5) |
| Lung cancer | 6 (10.9) | 3 (10.3) |
| Gastrointestinal malignancies [∞] | 4 (7.3) | 2 (6.9) |
| Genitourinary malignancies ^Δ | 2 (3.6) | 0 |
| Gynecologic malignancies [∇] | 2 (3.6) | 1 (3.5) |
| Melanoma | 1 (1.8) | 1 (3.5) |
| Sarcoma | 2 (3.6) | 2 (6.9) |
| Acute and chronic leukemias [†] | 7 (12.7) | 3 (10.3) |
| Plasma cell dyscrasias [‡] | 6 (10.9) | 3 (10.35) |
| Myeloproliferative neoplasms [⋄] | 1 (1.8) | 0 |
| Non-Hodgkin lymphoma | 12 (21.8) | 5 (17.2) |
| Other | 1 (1.8) | 0 |

CNS cancers⁺ = Astrocytoma, glioblastoma, glioma, nerve sheath tumor, neuroblastoma

Germ cell tumors[⋄] = Germ cell tumor and testicular cancer

Gastrointestinal malignancies[∞] = Appendiceal, cholangiocarcinoma, gallbladder, gastrim, esophageal, hepatocellular, pancreatic, rectal/colon

Genitourinary malignancies^Δ = Bladder cancer, urothelial cancer, prostate cancer, renal cell carcinoma

Gynecologic malignancies[∇] = cervical, endometrial, ovarian, uterine, vulvar

Acute and chronic leukemias[†] = acute lymphoblastic leukemia, acute myeloid leukemia, chronic lymphoid leukemia, chronic myeloid leukemia, chronic myelomonocytic leukemia, hairy cell leukemia, myelodysplastic syndrome

Plasma cell dyscrasias[‡] = amyloidosis, multiple myeloma, monoclonal gammopathy of undetermined significance

Supplemental Table 2. Outpatient Demographics and Baseline Characteristics (n=530)

| Characteristic | Number of Patients, n (%) |
|--------------------------------------|---------------------------|
| Age (years) | |
| < 18 years | 12 (2.26) |
| 18-29 | 23 (4.34) |
| 30-39 | 39 (7.36) |
| 40-49 | 76 (14.3) |
| 50-59 | 133 (25.1) |
| 60-69 | 140 (26.4) |
| > 70 | 107 (20.2) |
| Gender | |
| Male | 263 (49.6) |
| Female | 267 (50.4) |
| Race | |
| White | 325 (61.3) |
| Black | 89 (16.8) |
| Asian | 51 (9.62) |
| Other/Unknown | 64 (12.1) |
| Underlying Cancer* | |
| Breast cancer | 105 (19.8) |
| Nervous system cancers | 10 (1.89) |
| Germ cell tumors | 8 (1.51) |
| Lung cancer | 33 (6.23) |
| Gastrointestinal malignancies | 90 (17.0) |
| Genitourinary malignancies | 71 (13.4) |
| Gynecologic malignancies | 24 (4.52) |
| Head and neck cancers | 23 (4.33) |
| Skin cancer | 15 (2.83) |
| Sarcoma | 35 (6.6) |
| Acute and chronic leukemias | 47 (8.86) |
| Plasma cell dyscrasias | 22 (4.15) |
| Myeloproliferative neoplasms | 4 (0.75) |
| Non-Hodgkin's and Hodgkin's Lymphoma | 41 (7.73) |
| Other | 2 (0.4) |
| Outpatient G-CSF use | |
| Filgrastim | 11 (1.7) |
| Pegylated Filgrastim | 1 (0.2) |
| Neither | 518 (97.7) |
| Death | 21 (3.4%) |

***Nervous system cancers** include glioma, glioblastoma, astrocytoma, nerve sheath tumors, neuroblastoma; **germ cell tumors** include germ cell tumors and testicular cancer; **gastrointestinal malignancies** include oropharyngeal cancer, appendiceal cancer, cholangiocarcinoma, gallbladder cancer, gastric cancer, esophageal cancer, hepatocellular carcinoma, pancreatic cancer, colorectal cancer, gastrointestinal stromal tumors, pancreatic neuroendocrine tumors; **genitourinary malignancies** include bladder cancer, urothelial cancer, prostate cancer, renal cell carcinoma; **gynecologic malignancies** include cervical cancer, ovarian cancer, endometrial cancer, uterine cancer, vulvar cancer; **head and neck cancers** include head and neck squamous cell carcinoma, adenoid carcinoma, thyroid cancer, thymic tumors; **skin cancers** include melanoma and non-melanoma skin cancer; **acute and chronic leukemias** include acute and chronic myeloid leukemia, acute and chronic lymphocytic leukemia, hairy cell leukemia, myelodysplastic syndrome, chronic myelomonocytic leukemia; **plasma cell dyscrasias** include multiple myeloma, amyloidosis, smoldering myeloma, monoclonal gammopathy of undetermined significance; **myeloproliferative neoplasms** include myelofibrosis, immune thrombocytopenic purpura, aplastic anemia, Erdheim-Chester syndrome.

Supplemental Table 3

| | No G-CSF | G-CSF | G-CSF use prior to combined endpoint only |
|-------------------|-----------------|--------------|--|
| Outpatient | | | |
| Death | 21/518 = 4% | 0/12 = 0% | N/A |
| | | | |
| Inpatient | | | |
| High O2 (>4L) | 94/275 = 34% | 9/29 = 31% | 7/16 = 44% |
| Vent | 47/275 = 17% | 4/29 = 14% | 1/16 = 6% |
| Death | 49/275 = 18% | 4/29 = 14% | 2/16 = 13% |

Supplemental Table 4

| Patient | Baseline Chest Xray: Normal (0) vs Abnormal (1) Pre- G-CSF | Follow up Chest Xray: Yes vs. No Post- G-CSF | Days between G-CSF and follow up Chest Xray | Evolution |
|---------|---|---|--|-----------|
| 1 | 1 | Yes | 2 | Increased |
| 2 | 0 | No | NA | NA |
| 3 | 1 | Yes | 13 | Decreased |
| 4 | 0 | Yes | 0 | Increased |
| 5 | 1 | Yes | 2 | Increased |
| 6 | NA | No | NA | NA |
| 7 | 1 | Yes | 2 | Decreased |
| 8 | 0 | Yes | 2 | Increased |
| 9 | 1 | Yes | 2 | Decreased |
| 10 | 0 | Yes | 0 | Unchanged |
| 11 | 1 | Yes | 5 | Increased |
| 12 | 0 | Yes | 1 | Increased |
| 13 | 1 | NA | NA | NA |
| 14 | 1 | NA | NA | NA |
| 15 | 1 | NA | NA | NA |
| 16 | NA | NA | NA | NA |