

Clinical phenotypes and prognostic features of ETMRs (Embryonal Tumor with Multi-layered Rosettes) a new CNS tumor entity: A Rare Brain Tumor Registry study

Sara Khan^{1,2,96*}, Palma Solano-Paez^{1,3,96*}, Tannu Suwal^{1,4}, Mei Lu¹, Salma Al-Karmi¹, Ben Ho^{1,4}, AlmeidaGonzalez CV⁵, Derek Stephens⁶, Andrew Dodgshun⁷, Mary Shago^{4,8}, Paula Marrano⁴, Adriana Fonseca⁹, Lindsey M. Hoffman¹⁰, Sarah Leary¹¹, Holly B. Lindsay¹², Alvaro Lassaletta¹³, Anne E. Bendel¹⁴, Christopher Moertel¹⁵, Andres Morales¹⁶, Vicente Santa-Maria¹⁶, Cinzia Lavarino¹⁷, Eloy Rivas¹⁸, Sebastian Perreault¹⁹, Benjamin Ellezam²⁰, Nada Jabado²¹, Angelica Oviedo²², Michal Yalon-Oren²³, Laura Amariglio²³, Helen Toledano²⁴, James Loukides^{1,25}, Timothy E. Van Meter²⁶, Hideo Nakamura²⁷, Tai-Tong Wong²⁸, Kuo-Sheng Wu²⁸, Chien-Jui Cheng²⁸, Young-Shin Ra²⁹, Milena La Spina³⁰, Luca Massimi³¹, Anna Maria Buccoliero³², Alyssa Reddy³³, Rong Li³³, G. Yancey Gillespie³³, Dariusz Adamek³⁴, Jason Fangusaro³⁵, David Scharnhorst³⁶, Joseph Torkildson³⁷, Donna Johnston³⁸, Jean Michaud³⁹, Lucie Lafay-Cousin⁴⁰, Jennifer Chan⁴¹, Frank Van Landeghem⁴², Beverly Wilson⁴³, Sandra Camelo-Piragua⁴⁴, Nabil Kabbara⁴⁵, Mahjouba Boutarbouch⁴⁶, Derek Hanson⁴⁷, Chad Jacobsen⁴⁷, Karen Wright⁴⁸, Jean M. Mulcahy Levy¹⁰, Yin Wang⁴⁹, Daniel Catchpoole⁵⁰, Nicholas Gerber⁵¹, Michael A. Grotzer⁵², Violet Shen⁵³, Ashley Plant⁵³, Christopher Dunham⁵⁴, Maria Joao Gil da Costa⁵⁵, Ramya Ramanujachar⁵⁶, Eric Raabe⁵⁷, Jeffery Rubens⁵⁷, Joanna Philips⁵⁸, Nalin Gupta⁵⁹, Ahmet Demir⁶⁰, Christine Dahl⁶¹, Mette Jorgensen⁶¹, Eugene I. Hwang⁶², Amy Smith⁶³, Enrica Tan⁶⁴, Sharon Low⁶⁵, Jian-Qiang Lu⁶⁶, Ho-Keung NG⁶⁷, Jesse L Kresak⁶⁸, Sridharan Gururangan⁶⁹, Scott L. Pomeroy⁷⁰, Nongnuch Sirachainan⁷¹, Suradej Hongeng⁷¹, Vanan Magimairajan⁷², Roona Sinha⁷³, Naureen Mushtaq⁷⁴, Reuben Antony⁷⁵, Mariko Sato⁷⁶, David Samuel⁷⁷, Michal Zapotocky⁷⁸, Samina Afzal⁷⁹, Nisreen Amayiri⁸⁰, Maysa Al-Hussaini⁸⁰, Andrew Walter⁸¹, Tarik Tihan⁸², Gino R. Somers⁸, Amar Gajjar⁸³, Paul Wood², Nicolas Gottardo⁸⁴, Jason E. Cain², Peter A Downie², Helen Branson⁸⁵, Suzanne Laughlin⁸⁵, Brigit Ertl-Wagner⁸⁵, Derek S. Tsang⁸⁶, Vijay Ramaswamy⁹, James Drake²⁵, Abhaya V. Kulkarni²⁵, David S Ziegler⁸⁷, Sumihito Nobusawa⁸⁸, Uri Tabori^{1,9}, Michael D. Taylor^{1,4,25}, George M Ibrahim²⁵, James T. Rutka^{1,4,25}, Peter B. Dirks^{1,4,25}, Lili-Naz Hazrati⁸, Richard G. Grundy⁸⁹, Maryam Fouladi⁹⁰, Pr Laetitia Padovani⁹¹, Franck Bourdeaut⁹², Jordan R. Hansford⁹³, Ute Bartels⁹, Christelle Dufour⁹⁴, Cynthia Hawkins^{1,4,8}, Nicolas Andre⁹⁵, Eric Bouffet⁹, Annie Huang^{1,4,9,97}

⁹⁶Co-first authors

⁹⁷Corresponding author

Corresponding author: annie.huang@sickkids.ca

1. Arthur and Sonia Labatt Brain Tumor Research Centre, Division of Haematology/Oncology, Hospital for Sick Children, Toronto, ON, M5G0A4, Canada.
2. Monash Children's Cancer Centre, Monash Children's Hospital. Monash Health. Center for Cancer Research, Hudson Institute of Medical Research, and Department of Molecular and Translational Science, School of Medicine, Nursing and Health Science, Monash University, Clayton, Victoria, 3168, Australia.
3. Instituto de Biomedicina de Sevilla (IBiS), Hospital Universitario Virgen del Rocío, CSIC, Universidad de Sevilla, Seville, Spain.
4. Department of Laboratory Medicine and Pathobiology, Faculty of Medicine, University of Toronto, Toronto, ON, M5S1A8, Canada.

5. Department of Statistics and Research Methodology, Hospital Universitario Valme, Seville, Spain
6. Biostatistical Design and Analysis, Clinical Research Services, Hospital for Sick Children, Toronto, ON, M5G0A4, Canada.
7. Children's Haematology/Oncology Centre, Christchurch Hospital, Christchurch, Christchurch, 8011, New Zealand.
8. Department of Pediatric Laboratory Medicine, The Hospital for Sick Children, Toronto, ON, M5G0A4, Canada.
9. Division of Hematology-Oncology, The Hospital for Sick Children, Department of Pediatrics, University of Toronto, Toronto, ON, M5G0A4, Canada.
10. Department of Pediatrics, University of Colorado Denver, Aurora, CO, 80045, USA.
11. Department of Hematology-Oncology, Seattle Children's Hospital, Seattle, WA, 98105, USA.
12. Department of Pediatrics, Division of Hematology and Oncology, Baylor College of Medicine, Texas Children's Hospital, Houston, TX, 77030, USA.
13. Pediatric Hematology and Oncology Department, Hospital Infantil Universitario Niño Jesús, Madrid, 28009, Spain.
14. Children's Hospitals and Clinics of Minnesota, Minneapolis, MN, 55404, USA.
15. Pediatric Hematology-Oncology, Department of Pediatrics, University of Minnesota Masonic Children's Hospital, Minneapolis, MN, 55454, USA.
16. Neuro Oncology Unit Department of Pediatric Hematology, Oncology and Stem Cell Transplantation Sant Joan de Déu Children's Hospital, Barcelona, 08950, Spain.
17. Department of Molecular Oncology, Sant Joan de Déu Children's Hospital, Barcelona, 08950, Spain.
18. Instituto de Biomedicina de Sevilla (IBiS), Hospital Universitario Virgen del Rocío, CSIC, Universidad de Sevilla, Seville, Spain.
19. Division of Child Neurology, Department of Pediatrics, CHU Sainte-Justine, Université de Montréal, 3175 Chemin de la Côte-Sainte-Catherine, Montreal, QC, H3T 1C5, Canada.
20. Department of Pathology, CHU Sainte-Justine Research Center, Université de Montréal, Montreal, QC, H3T1C5, Canada.
21. Department of Pediatrics, McGill University, Montreal, QC, H4A 3J1, Canada.
22. IWK Health Centre, 5850/5980 University Ave, Halifax, NS B3K 6R8
23. Department of Pediatric Neuro-Oncology, Sheba Medical Centre, Tel HaShomer, Ramat Gan 52621, Israel.
24. Division of Haematology/Oncology, Schneider Medical Center of Israel, Petah Tikva, Israel.
25. Division of Neurosurgery, Department of Surgery, Hospital for Sick Children, University of Toronto, ON, M5G0A4, Canada.
26. Department of Pediatrics, Virginia Commonwealth University, Richmond, VA, 23298-0631, USA.
27. Department of Neurosurgery, Kumamoto University, Kumamoto, 860-8555, Japan.
28. Taipei Medical Hospital, Taipei City, 1063, Taiwan.
29. Department of Neurosurgery, Asan Medical Center, Seoul 138-736, Korea.
30. Paediatric Haematology and Oncology Division, University of Catania, Sicily 2-95131, Italy.
31. Department of Neurosurgery, Fondazione Policlinico A. Gemelli IRCCS, Università Cattolica del Sacro Cuore, Rome, 00168, Italy.
32. Pathology Unit Meyer Children's Hospital, Florence 50139, Italy.
33. University of Alabama at Birmingham, Birmingham, AL, 35294, USA.
34. Department of Pathomorphology, Jagiellonian University Medical College, Krakow 31-007, Poland.
35. Division of Pediatric Hematology/Oncology and Stem Cell Transplantation, Children's Memorial Hospital, Chicago, IL 60611, USA.
36. Department of Pathology, Children's Hospital Central California, Madera, CA 93636, USA.

37. Department of Hematology/Oncology, UCSF Benioff Children's Hospital Oakland, Division of Pediatric Hematology/Oncology, Department of Pediatrics, University of California, Oakland, CA, USA.
38. Division of Hematology/Oncology, Children's Hospital of Eastern Ontario, Ottawa, ON, K1H8L1, Canada.
39. Department of Pathology and Laboratory Medicine, University of Ottawa, Ottawa, ON, K1H8M5, Canada.
40. Department of Pediatric Oncology, Alberta Children's Hospital, Calgary, AB, T3B 6A8 Canada.
41. Department of Pathology and Laboratory Medicine, University of Calgary, Calgary, AB, T2N1N4, Canada.
42. Department of Laboratory Medicine & Pathology, University of Alberta, Edmonton, AB, Canada.
43. Stollery Children's Hospital, University of Alberta, Edmonton, T6G 2B7, Canada.
44. Department of Pathology, University of Michigan, Ann Arbor, MI 48109, USA.
45. Division of Pediatric Hematology Oncology, Rafic Hariri University Hospital, Beirut 2010, Lebanon.
46. Department of Neurosurgery, Mohamed Vth, University, School of Medicine, Hôpital des Spécialités, ONO CHU Ibn Sina, Rabat 10100, Morocco.
47. Division of Hematology-Oncology, Steven and Alexandra Cohen Children's Medical Center, Northwell Health, New Hyde Park, NY 11042, USA and Children's Hospital, Hackensack University Medical Center, Hackensack, NJ 07601, USA.
48. Boston Children's Hospital, 50 Brookline Ave, Boston, MA 02115, USA.
49. Department of Neuropathology Huashan Hospital, Fudan University, Shanghai, 200040, China.
50. The Tumor Bank, Children's Cancer Research Unit, Kids Research, the Children's Hospital at Westmead, Westmead, New South Wales, 2145, Australia.
51. Department of Oncology and Children's Research Center, University Children's Hospital, Zürich, 8091, Switzerland.
52. University Children's Hospital Zurich, Steinwiesstrasse 75, 8032 Zürich, Switzerland
53. Division of Pediatric Oncology, Children's Hospital of Orange County, Orange, CA, 92868, USA.
54. Department of Pathology and Laboratory Medicine, University of British Columbia, Vancouver, BC, V6T 1Z2, Canada.
55. São João University Hospital Center, Alameda Prof. Hernâni Monteiro, 4200-319 Porto, Portugal
56. Paediatric Haematology and Oncology, Southampton Children's Hospital, Southampton, SO166YD, UK.
57. Johns Hopkins School of Medicine, Sidney Kimmel Comprehensive Cancer Center, Division of Pediatric Oncology, Baltimore, MD 21287, USA.
58. Department of Pathology, University of California, California, San Francisco, 94143-0112, USA
59. Department of Neurological Surgery, University of California, San Francisco, CA, 94143-0112, USA.
60. Department of Hematology, Trakya University Medical Faculty, Edirne, Turkey.
61. Great Ormond Street Hospital for Children NHS Foundation Trust, London, WC1N3JN, UK.
62. Center for Cancer and Blood Disorders, Children's National Medical Centre, Washington, DC, 20010, USA.
63. Arnold Palmer Hospital, Orlando, FL, 32806, USA.
64. Paediatric Haematology/Oncology Service, KK Women's and Children's Hospital, 229899, Singapore.
65. Neurology Service, Department of Pediatrics, KK Women's and Children's Hospital, 229899, Singapore.
66. Department of Pathology and Molecular Medicine, McMaster University, Hamilton, Ontario, Canada.
67. The Chinese University of Hong Kong, Central Ave, Hong Kong

68. Department of Pathology, Immunology and Laboratory Medicine, University of Florida, Gainesville, FL, USA.
69. Lillian S. Wells Department of Neurosurgery, University of Florida, Gainesville, FL, USA.
70. F.M. Kirby Neurobiology Center, Boston Children's Hospital, Boston, MA, USA.
71. Department of Pediatrics, Ramathibodi Hospital, Mahidol University, Ratchathewi, Bangkok, Thailand.
72. Cancer Care Manitoba, Pediatrics and Child Health, University of Manitoba, Winnipeg, R3E 0V9, Canada.
73. Royal University Hospital, Saskatoon, SK, Canada
74. Department of Pediatrics, Aga Khan University Hospital, Karachi, Pakistan.
75. Department of Pediatric Hematology-Oncology, University of California, Davis, Sacramento, CA, USA.
76. University of Iowa Stead Family Children's Hospital, Iowa City
77. Department of Hematology/Oncology, Valley Children's Hospital, Madera, CA, USA.
78. Department of Pediatric Hematology and Oncology, Second Faculty of Medicine, University Hospital Motol, Charles University, Prague, Czech Republic
79. Department of Oncology, AlJalila Children's Specialty Hospital, Dubai, UAE.
80. King Hussein Cancer Center, Al-Jubaiha Amman, Jordan.
81. Division of Pediatric Hematology/Oncology Nemour Alfred I duPont Hospital for Children, Wilmington, DE 19803, USA.
82. Department of Pathology, University of California, San Francisco (UCSF), California, San Francisco, CA, 94143, USA.
83. Division of Neuro-Oncology, Department of Oncology, St. Jude Children's Research Hospital, Memphis, TN, 38105, USA.
84. Department of Paediatric and Adolescent Oncology/Haematology, Perth Children's Hospital, Brain Tumour Research Programme, Telethon Kids Institute, School of Medicine, Pediatrics, The University of Western Australia, Nedlands, 6009, Western Australia, Australia.
85. The Department of Medical Imaging, The Hospital for Sick Children, University of Toronto, Toronto, Canada.
86. Radiation Medicine Program, Princess Margaret Cancer Centre, University Health Network, Toronto, ON, Canada.
87. Kids Cancer Centre, Sydney Children's Hospital, Randwick, New South Wales, Australia; School of Women's and Children's Health, Faculty of Medicine, University of New South Wales, NSW, 2031, Australia.
88. Department of Human Pathology, Gunma University, Gunma, Japan.
89. Children's Brain Tumor Research Centre, Queen's Medical Centre University of Nottingham, Nottingham, NG72UH, UK.
90. Division of Oncology, Department of Cancer and Blood Diseases, Cincinnati Children's Hospital, Cincinnati, OH, 45229, USA.
91. Radiotherapy Department, Hospital of La Timone, AP-HM, Marseille, France
92. PSL Research University, Institut Curie Research Center, INSERM U830, Paris, France; PSL Research University, Institut Curie Research Center, Translational Research Department, Paris, France; SIREDO: Care, Innovation and Research for Children, Adolescents and Young Adults with Cancer, Institut Curie, Paris, France.
93. Children's Cancer Centre, Royal Children's Hospital, Victoria 3052, Australia.
94. Department of Pediatric and Adolescent Oncology, Gustave-Roussy, Villejuif, France.
95. Pediatric Oncology, Children Hospital of La Timone, AP-HM, Marseille, France.

Background

ETMRs are a newly recognized rare paediatric brain tumor with alterations of the *C19MC* microRNA locus. Due to varied diagnostic practices and limited clinical data, disease features and determinants of outcome are poorly defined. We performed an integrated clinico-pathologic and molecular analyses of 159 primary ETMRs to define clinical phenotypes, identify predictors of survival and critical treatment modalities for this orphan disease.

Methods

Primary ETMR patients were identified from the Rare Brain Tumor Consortium (rarebraintumorconsortium.ca) global registry using histopathologic and molecular assays. Event-Free (EFS) and Overall Survival (OS) for 108 patients treated with curative multi-modal regimens were determined using Cox proportional hazard and log rank analyses.

Findings

ETMRs were predominantly non-metastatic (73%) tumors arising from multiple sites; 55% were cerebral tumors, 45% arose at sites characteristic of other brain tumors. Hallmark *C19MC* alterations were seen in 91%; 9% were ETMR-NOS. Survival and hazard analyses showed a 6 month median EFS and 2-4yr OS of 27-29% with metastatic disease (HR=0.44, 95% CI 0.26-0.74; p=0.002) and brainstem location (HR=0.40, 95% CI 0.021-0.75; p=0.005) correlating with adverse OS. Gross total resection (GTR: HR=0.38, 95% CI 0.21-0.68; p=0.001), high dose chemotherapy (HDC: HR=0.55, 95% CI 0.31-0.97; p=0.04) and radiation (RT: HR=0.32, 95% CI 0.16-0.60; p<0.001) correlated with improved EFS and OS in multi-variable analyses. EFS and OS for patients treated with only conventional dose chemotherapy (CC) was 0% and respectively 37% ±14% and 32% ±

13% for patients treated with HDC. Patients with GTR or sub-total resection (STR) treated with HDC and RT had superior EFS (GTR $73\% \pm 14\%$, $p=0.018$; STR $67\% \pm 19\%$ $p=0.009$) and OS (GTR $66\% \pm 17\%$, $p=0.05$; STR $67\% \pm 16\%$, $p=0.005$). Amongst 21 long-term survivors (OS 24-202 months); 38%, 24% and 24% respectively received craniospinal, focal or no RT.

Interpretation: Prompt molecular diagnosis and post-surgical treatment with multi-modal therapy tailored to patient-specific risk features improves ETMR survival.

Funding

This work was supported by the Canadian Institute of Health Research Grant No. 137011, Canada Research Chair Awards to AH. Funds from Miracle Marnie, Phoebe Rose Rocks, Tali's Funds, Garron Cancer Centre, Grace's Walk, Meagan's Walk, Nelina's Hope and Jean Martel Foundation are gratefully acknowledged. SK and PS were respectively supported by the Australian Lions Children's Cancer Foundation and the Spanish Society of Pediatrics, Consejería de Salud y Familias de la Junta de Andalucía Project EF-0451-2017.

INTRODUCTION

Embryonal tumors represent the largest category of brain cancers arising in children 0-14 years of age (1). Although medulloblastoma is most common, 40% of pediatric embryonal brain tumors are rare entities primarily affecting very young children and including Rhabdoid tumors and tumors historically categorized as supra-tentorial or CNS primitive neuroectodermal brain tumors (2, 3). Recent global profiling studies show these rare tumors span a spectrum of molecular diseases leading to the designation of new WHO diagnostic categories (2, 4-7). However, as many of these entities were historically considered and treated as different diseases, existing clinical data is difficult to evaluate. Furthermore, as molecular diagnoses of these rare diseases is not routinely performed, the clinical and therapeutic spectrum of these new, rare diseases remain poorly defined. Delays in clinical recognition, diagnosis and commencement of specific treatment likely contributes significantly to the generally poorer outcome of children with rare brain tumors .

Eberhart et al, first described a new histologic category of infant brain tumors, called Embryonal Tumor with abundant Neuropil and True Rosettes (ETANTR) (8). Subsequent studies showed various rare histologic entities, considered to be distinct diagnoses including ETANTR, Medullo-epithelioma (MEP), Ependymoblastoma (EPB) and supra-tentorial Primitive Neuroectodermal Tumors (sPNET), comprised a common molecular entity defined by recurrent amplification/gene fusions of *C19MC*, a novel oncogenic microRNA locus and primitive transcriptional and epigenetic features enriched for LIN28A, a pluripotency factor (4-7, 9). These studies led to the designation *C19MC*-altered ETMRs and a small proportion of tumors without *C19MC* alterations (ETMR NOS), as a new WHO CNS diagnostic category (2). While FISH analyses specifically identifies *C19MC*-altered ETMRs, ETMR NOS are more challenging diagnoses due to LIN28A expression in other malignant pediatric brain tumors including Rhabdoid tumors, high grade gliomas, germ cell tumors (6, 10-12), as well as non-CNS cancers (13).

ETMRs are now increasingly reported in the literature indicating this previously under-recognized entity may comprise a significant proportion of embryonal brain tumors arising in infants and younger children. Due to the varied histologic labels and relatively recent discovery of a molecular diagnostic marker in 2009, there is limited to no prospective treatment and outcome data on ETMRs. Due to early studies indicating ETMRs are lethal diseases with <10% overall survival (4, 6) ETMR patients are frequently treated with various aggressive conventional multi-modal and experimental therapies. Although benefits of high dose chemotherapy and radiation has been reported in various small studies and literature reviews, the impact of these treatments (14-16), have been difficult to assess due to limited patient cohorts, inconsistent diagnostic methods for ETMRs and lack of treatment and outcome information for the majority of patients reported to date. In order to inform current clinical practice and future clinical trials, we examined molecular, clinical, treatment and survival features of a large cohort of primary ETMRs patients identified from the Rare Brain Tumor clinical registry (rarebraintumorconsortium.ca) using multiple diagnostic assays.

MATERIALS AND METHODS

Patient, sample selection and procedures

The Rare Brain Tumor Consortium comprised of 140 participating centres, was established in 2002 to generate a comprehensive clinical database and biorepository for rare pediatric brain tumors. Tumor samples and clinical information were collected from treating physicians with patient consent as per Research Ethics Board guidelines at the Hospital for Sick Children and all participating institutions (Table S1). For this study clinical and diagnostic materials from 1904 patients in the RBTC database were reviewed to identify patients with institutional diagnoses of embryonal brain tumors; 99 patients with insufficient tissue were excluded. Based on review of histopathologic data, 213 tumors (Table S2) were further examined by multiple molecular assays as

described in section below (Table S3). Data from 159 patients with a confirmed molecular diagnosis of ETMR were reviewed for age, sex, tumor location, metastatic status as defined by the Chang staging system, treatment received (extent of surgery, type of chemotherapy regimen, radiation field and dose), event free and overall survival. Only patients with complete clinical and treatment data were included in clinicopathologic and prognostic analyses. Patients who received a combination of oncologic tumor surgery, multi-agent chemotherapy with or without radiation, regarded globally as standard approach for embryonal brain tumors, were considered as treated with curative intent. Patients treated with surgery alone or lacking details of chemotherapy were not considered as treated with curative intent. Detailed molecular, clinical and outcome data current to November 2019 (Table S2, S3) was used for all correlative analyses.

Molecular and immuno-histochemical assays

DNA/RNA from frozen or formalin-fixed, paraffin-embedded tumor tissue were processed for RNA sequencing or profiling on the Illumina Human 450K or EPIC methylation arrays (Illumina, San Diego, CA) as previously described (6). *C19MC* alterations were confirmed using a combination of SNP and methylation array derived copy number analyses (Conumee program; version 1.8.0) (Table S3) and *C19MC* FISH using test (RP11-381E3) and control (RP11-451E20) probes as previously described (4), while gene fusions were identified using Illumina RNA sequencing. To identify ETMRs NOS, global methylation data from 1805 tumors were examined relative to an in house reference data set of 1200 pediatric brain tumors with established diagnoses, using multiple orthogonal analyses. A t-distributed stochastic neighbor embedding (tSNE; Rtsne v0.15) analyses, based on the 12,500 most variable methylation probes determined by standard deviation (SD), was used to visualize global methylation features of ETMRs relative to the reference pediatric brain

tumor data set. Reagents, methods used for LIN28A IHC staining and scoring (ML, TS) were as in prior publications (6).

Statistical and informatic analyses

Overall (OS) and Event-free survival (EFS) were respectively defined as time from diagnosis to disease-related death or last visit, and time from diagnosis to first progression, relapse, death or date of last visit. Univariate and multivariate Cox proportional hazard analyses were used to identify clinical, molecular or treatment prognostic factors. Age, tumor location and *C19MC* status were respectively considered continuous and categorical variables, while sex, metastatic status, gross total (GTR) or sub-total (STR) tumor resection, high (HDC) or conventional dose chemotherapy (CC) and radiation treatment were considered dichotomous variables. Effect of chemotherapy, radiation and surgical resection were analyzed using Cox-regression for time-dependent covariates. All tests were two-sided; $p \leq 0.05$ was considered statistically significant. Kaplan-Meier method and log-rank tests were performed for comparative survival analyses using SPSS and R (v25. NY:IBM Corp; v3.6.1).

Role of funding source

Funders of this study had no role in design, data gathering, analyses, interpretation or writing of this study. SK, PS, TS, NA, EB and AH had access to study data and final responsibility for manuscript submission.

RESULTS

Histopathologic and molecular characteristics

We identified 159 primary and 15 recurrent samples from patients enrolled on the RBTC registry that met histologic and molecular diagnostic criteria for ETMRs; only data from primary ETMRs were included in clinico-pathologic analyses.

Consistent with the unique identity of ETMRs, cluster analyses of global methylation profiles showed *C19MC*-altered ETMRs and ETMR NOS segregated from other pediatric CNS tumors (Figure 1A). Although *C19MC* amplification has been most commonly reported in ETMRs, our detailed analyses showed a range of *C19MC* alterations (Figure 1B-D) including amplification (≥ 10 copies) in 62.5% (90/144) and low level copy number gains (2-4 copies) in 22% (32/144) of primary ETMRs; other frequent alterations included chr 2 (64%) gains and chr 6 (25%) losses. RNAseq data available for 36 tumors showed *C19MC* fusions to the primitive ion channel locus *TTHY1* in a majority (89%) but not all ETMRs with *C19MC* copy number changes. Histopathologic review (n=149) revealed a range of overlapping histologies including ETANTR (92; 62%), Medulloepithelioma (15; 10%) and Ependymoblastoma (7; 4.6%), however, 23.4% (35) of primary ETMRs lacked classic histology and met criteria for Embryonal tumors NOS (Fig 1E). A majority of ETMRs (80%) had strong, diffuse LIN28A IHC stain, however, 20% of tumors had patchy LIN28A expression. There was no correlation of tumor histology with *C19MC* alterations or LIN28A expression pattern.

Clinical features of patients at diagnosis

To elucidate clinical phenotypes, we examined demographics (age, gender) and disease features (tumor location, stage) for the 159 primary ETMR patients. Unlike other pediatric brain tumors, ETMR patients exhibited a male to female ratio of 1:1.4 (Figure 2A). Median age at diagnosis was

26 months (0.5-141; IQR 18-36) with 96% of patients presenting between 12-60 months of age (Figure 2B); only 2-4% of patients were < 6 months and > 10 years of age at diagnosis. Age and gender were not significantly different for patients with *C19MC*-altered ETMRs or ETMR NOS. ETMRs arose from multiple CNS sites, most commonly in the cerebrum (55%) and cerebellum (18%); rare tumors were in midline (11%), intra-ventricular (5%), lumbo-sacral (2%) and orbital (1%) locations. Cerebral tumors arose as frontal (24%), parietal (18%), temporal (11%) and occipital (5%) lesions; 32% were large masses traversing lobes or supra-and infra-tentorial compartments. Notably, 10% of ETMRs presented as intrinsic brain stem tumors with radiologic resemblance to diffuse intrinsic pontine glioma (DIPG) seen in older children (Figure 2C-D). ETMRs were localized in 73% of patients at diagnosis (Figure 2E); rare ETMRs had extension and invasion of local structures reminiscent of mesenchymal tumors (Table S2). Metastatic diseases seen in 27% of patients at diagnosis, was frequently advanced with nodular cranio-spinal disease (62% M2-3) and rare extra-neural metastases (M4); only 15% had isolated positive (M1) CSF cytology.

Disease trajectory and clinical prognostic factors

To evaluate disease patterns and prognosticators, we performed survival analysis for 108 patients with complete follow-up data after curative multi-modal regimens including surgery, chemotherapy and/or radiation. ETMR patients had respective median EFS and OS of 6 (IQR 4-15) and 13 months (IQR 7-21) (Figure 3A-B) at a median follow-up of 25 months (IQR 12- 78). Survival analyses indicated ETMRs patients had rapid disease tempo with respective 6, 12 and 24-month median EFS of 57% (95% CI 47-67), 37% (95% CI 26-48) and 31% (95% CI 20-41) (Table 1). Despite multi-modal therapies, 62% (67/108) of patients succumbed within 24 months of diagnosis, with 2 and 4-year OS of 29% (95% CI 20-38) and 27% (95% CI 18-37). Univariate analyses identified brain stem location and metastatic disease at diagnosis as significant negative risk factors for OS (Table 2) with respective 2.5 (HR=0.40 95% CI 0.021-0.75, p=0.005), and 2.3 fold (HR=0.44 95% CI 0.26-

0.74, $p=0.002$) greater risk of death. Age, gender and *CI9MC* status were not significantly associated with EFS or OS.

Treatment related prognostic factors

As best treatment approach for ETMRs remains unknown, we investigated the impact of conventional embryonal brain tumor modalities in our cohort (Table 2). Amongst the 108 patients treated with curative intent, 48% had complete tumor resection (GTR), 57% received high dose chemotherapy (HDC) and 43% received radiation (56% focal; 40% cranio-spinal) as part of primary tumor treatment. Univariate hazard analyses identified receipt of GTR (HR=0.43; 95% CI 0.25-0.72, $p= 0.002$), HDC (HR= 0.41 95% CI 0.25-0.67, $p <0.001$) and radiation (HR=0.48 95% CI 0.25-0.81, $p = 0.005$) as significant positive prognosticators for OS. In multi-variable analyses all three modalities also correlated significantly with EFS and OS. GTR was associated respectively with 55% and 62% risk reduction in EFS (HR=0.45 95% CI 0.25-0.81, $p= 0.01$) and OS (HR=0.38 95% CI 0.21-0.68, $p= 0.001$), while HDC treatment also correlated with superior EFS (HR=0.45 95% CI 0.25-0.81, $p=0.01$) and OS (HR=0.55 95% CI 0.31-0.97, $p= 0.04$). Notably, focal or cranio-spinal radiation was associated with a 77% (HR=0.23 95% CI 0.12-0.47, $p <0.001$) and 68% (HR=0.32 95% CI 0.16-0.60, $p<0.001$) respective risk reduction in EFS and OS. These data indicate ETMR patients benefit from a combination of all three conventional treatment modalities.

Multi-modality therapy confers survival advantage in ETMR patients

Due to severe neuro-cognitive toxicity of whole brain and spine radiation in younger children, post-surgical HDC regimen is often used as a radiation deferral or avoidance strategy for younger children with embryonal brain tumors. We investigated the relative importance of surgery, intensity of chemotherapy and radiation to primary disease control and survival in ETMR patients. All patients irrespective of disease stage and location were stratified by extent of surgery, HDC versus CC, and radiation-free or primary radiation treatment (Figure 4 A-D). Log-rank analyses showed

HDC treatment significantly but nominally improved EFS and OS ($10\% \pm 9\%$; $p=0.001$ and 0.005) for patients with STR, while patients with GTR had superior but non-significant improvement in EFS ($37\% \pm 14\%$) and OS ($32\% \pm 13\%$) as compared to EFS and OS of 0% for all patients treated with only CC (Figure 4A-B). These findings suggest HDC intensification improves disease control and survival for ETMR patients, and that a proportion of patients with GTR may be cured with HDC alone.

To examine if radiotherapy conferred additional benefit in patients treated with HDC, we performed log rank analyses for patients treated with HDC stratified by receipt of radiation and extent of surgery. Consistent with multi-variable analyses, patients with STR treated with HDC and radiation had significantly improved EFS and OS, respectively $67\% \pm 19\%$ and $67\% \pm 16\%$ as compared to $10\% \pm 9\%$ for both EFS and OS ($p=0.009$; $p=0.05$) in non-radiated counterparts (Figure 4C-D). Disease control in patients with GTR treated with HDC and radiation was also significantly superior with EFS of $73\% \pm 14\%$ compared to $37\% \pm 14\%$ for non-radiated patients ($p=0.018$). However, we observed a strong but non-significant trend in OS, respectively $66\% \pm 17\%$ and $32\% \pm 13\%$ for patients with GTR treated with and without radiation ($p=0.051$). We next examined effects of HDC and radiation in patients with lower risk clinical features as identified in uni-variate analyses (M0, non-brain stem primaries). These analyses showed patients with STR treated with HDC and radiation also had better OS of $63\% \pm 17\%$ versus $14\% \pm 13\%$ in non-radiated counterparts ($p=0.039$). Interestingly, similar to the global cohort, radiation correlated with a strong but non-significant trend towards improved EFS ($73\% \pm 14\%$ vs $46\% \pm 15\%$; $p=0.051$) and OS ($66\% \pm 17\%$ and $41\% \pm 16\%$; $p=0.212$) for patients with GTR (Figure 4E-F).

Consistent with the importance of intensified multimodal regimens in ETMR survival, we observed 52% of patients with OS greater than the cohort median of 13 months received primary RT as

compared to 25% of patients with EFS less than the cohort median of 6 months, (range 1-6 months; $p=0.01$). Similarly, 70% and 30% of patients with OS \geq 13 months (range 13-165 months) respectively received HDC and CC treatment ($p=0.04$) (Table 3). While our aggregate data indicate surgery, HDC and radiation have important and inter-dependent roles in ETMR survival, it is notable that 24% of 21 long-term survivors (OS >24 -102 months) received only HDC and no radiation, suggesting use and timing of radiation may be further tailored to patient-specific risk features.

DISCUSSION

Through a first integrated clinical and molecular study of a substantial global registry based cohort, we describe a detailed clinical landscape for ETMRs – a rare tumor only recently designated as a new WHO diagnostic entity (ICD-O code (9478/3*) (2). We demonstrate these highly aggressive tumors in younger children, have pleomorphic histologic features and a wider clinical spectrum than previously appreciated. Importantly despite historical data indicating futility of therapy, our study shows these rapidly progressive tumors are curable with timely intensified multimodal therapy, underscoring critical, prompt accurate diagnosis for this rare disease. Our study identifies disease stage, tumor location, extent of surgery, receipt of HDC and primary radiotherapy as important prognosticators of survival. In addition to providing a much-needed framework for future clinical trials, our comprehensive and unique study of a large cohort of primary ETMRs has immediate practical implications for diagnostic and therapeutic approaches to children with this orphan disease. Although ~200 cases of ETMRs are reported to date (12, 14-18), the incidence of this disease is likely underestimated due to lack of molecular confirmation in most published studies, and reporting of ETMRs as historical histologic diagnostic categories. Furthermore, our analyses based on a large

cohort with matched molecular and clinical data indicate a much wider clinical spectrum of ETMRs than previously recognized. Indeed, while ETMR is classically considered as large “supra-tentorial” tumor with frequent metastases, our data indicate 45% of primary ETMRs arise in sites characteristic of other malignant brain tumors. Furthermore rare primary ETMRs mimic benign ophthalmic lesions (19) as well as features of non-CNS malignant tumors with local extension/invasion and extra-neural metastases (Table S2). Our detailed diagnostic verification also confirm significant variation in histo-morphologic features of primary ETMRs with 15-20% lacking classic rosette-forming histology. Furthermore, amongst the 91% with *C19MC* alterations, nearly 40% of tumors had either small areas of *C19MC* amplification, or low level *C19MC* gains evident only by FISH analyses while 10% lacked *C19MC* gene fusions by RNA sequencing assays. Together with prior clinical reports (11, 20, 21), our data indicates delayed clinical recognition and non-uniform diagnostic methods may contribute to the poor outcome of ETMRs which have distinctly rapid disease tempo. As *C19MC* genomic alterations is seen only in ETMRs and no other pediatric brain tumors (6), we propose that *C19MC* FISH together with histopathologic analyses and LIN28A immuno-stains, tools available in most pathology laboratories worldwide, be routinely performed for young patients with embryonal brain tumors to enable prompt clinical recognition and intervention.

Cumulative studies of ETMR patients diagnosed with various methods, have shown dismal outcomes with two larger series reporting short PFS and OS (15% 3yr OS 10.7 month) (8, 15). Our analyses over a more contemporary era show an overall modest improvement in ETMR survival (37% 1 year EFS; 27% 4 year OS). Importantly, we also observed remarkable EFS of 73% and OS of 66% in patients with localized, non-brain stem tumors, indicating a majority of ETMR patients with these good clinical risk features can be cured after gross total tumor removal and treatment with high dose chemotherapy and radiation.

Consistent with prior observations (15, 16, 22), radiation emerged as a strong treatment-related prognostic factor in our study. Notably, we observed that 62% of long-term survivors in our study received focal (38%) or no (24%) radiation treatment (Table S4) indicating most ETMR patients can be spared cranio-spinal radiation, and further that radiation application and timing may be tailored to patient specific risk features including extent of surgery and response to adjuvant chemotherapy. Our retrospective study lacks data on radiation timing, however, it is notable that patients with GTR treated with HDC and radiation had superior EFS but comparable 4yr OS relative to patients with STR (Figure 4C-D). Furthermore, limited data on relapses in patient with GTR post-HDC treatment alone indicate a majority (8/10) recurred locally, some multiple times. These observations suggest differences in radiation timing may contribute to disease progression and underlie observed discrepant EFS and OS in patients with GTR treated with HDC and radiation seen in our study (Figure 4E-F).

Similar to smaller reports (14-16), HDC emerged as a positive prognostic factor in our study while treatment with CC correlated with rapid progression in all patients. We observed an OS of $41 \pm 16\%$, amongst patients with M0, GTR, non-brain stem tumors treated with HDC alone while EFS and OS of radiated counterparts were not significantly different and suggest HDC may spare radiation in a significant proportion of patients with these favorable clinical features. Whether HDC has a cytoreductive role for sub-totally resected ETMRs, as reported for other embryonal tumors (23), is less clear as patients with STR but other favorable risk features had only nominally improved survival with HDC treatment alone. Our data lacked power to directly compare effects of HDC or CC combined with radiation, however, it is notable that no patients with STR treated with CC and radiation survived (0/5). Whether efficacy of CC or HDC combined with focal radiation are comparable in patients with favorable risk features could not be assessed in our study as details of radiation were only available for 2/5 long-term survivors treated with CC.

Fifty two percent (48/92) of patients in our study had rapid (EFS 1-6 months) local and/or disseminated progression on therapy. Patients with brain stem and/or metastatic disease represented the highest risk groups; 9/10 patients with biopsied or partially resected brainstem primaries progressed at a median of 4 months despite HDC and radiation. A sole survivor (OS=202 months) had GTR, indicating well demarcated brainstem tumors may benefit from maximal safe surgery (24). Of remark, 27% of patients with early local recurrence had favorable risk features, and suggest invasive tumor biology contributes to early local tumor regrowth in a proportion of ETMRs patients. Of note, a number of these are long-term survivors after second surgery and/or focal radiation (Table S4) indicating prompt focal radiation may particularly benefit patients with invasive tumors, or early local recurrence.

To date ETMRs have been considered highly fatal diseases; no curative therapy was undertaken for 9% of patients, including those with localized disease, in our registry. Notwithstanding the inherent limitations of retrospective studies, our collective data indicates ETMR is an imminently curable disease and suggest prompt diagnosis and intervention with risk tailored multi-modal therapy can cure a significant proportion of patients. We propose that maximum safe surgery followed by HDC be undertaken for children presenting with localized ETMRs, and second-look surgery and/or early radiation be considered for children with recurrence post complete surgery or while on chemotherapy treatment. Experimental approaches or agents are needed for children with advanced metastatic or progressive disease, but these must be considered within the context of a clinical trial with accompanying bio-marker studies to further inform biological and risk stratified therapies. While effective, treatment of the very young ETMR patients with multi-agent chemotherapy, radical surgery and even limited field radiation has long-term physiologic and neuro-cognitive implications. Thus, it will be important to delineate the molecular underpinnings of invasive biology and treatment failure in ETMRs to develop new biological therapies with less toxicity. However

innovative therapeutics for ETMR remain limited due to lack of animal models and human tumor cell lines available for study. How *DICER 1* germline alterations, reported in a small number of patients, contribute to ETMR phenotypes or therapeutic response remains to be studied (25-27). Nonetheless, recent studies suggest epigenetic mechanisms and defective DNA damage repair represent important vulnerabilities in ETMRs (28). Studies to date identify inhibitors of mTOR, Topoisomerases, PARP, Aurora and Polo-kinases, Histone Deacetylases, Bromodomain proteins and DNA methylation (Vorinostat, 5AzaC) as promising novel agents (26, 28-30).

Despite availability of a specific molecular marker for ETMRs, there remains significant gaps in diagnostic and treatment approaches to this aggressive disease. Indeed, our registry data indicate only a small proportion of ETMR patients have molecularly established diagnosis while CSF analyses, critical for robust staging of embryonal brain tumors, are not uniformly performed. Our integrated characterization of a unique, large global registry based cohort provides a first comprehensive description of the clinical and diagnostic features of this new disease and provides an important framework for risk-tailored, practical clinical management of ETMR patients for which there is presently no established standard of care or clinical trials.

In addition to immediate clinical implications of the current study, the extensive global clinical registry and biorepository of the RBTC network will continue to be a critical resource for future clinical and biological studies. Thus, it is vital we continue to enroll children diagnosed with ETMR and other rare tumors in the Global Rare Brain Tumor Consortium Clinical Registry and Biorepository (Rarebraintumorconsortium.ca).

Research in Context

ETMR is a rare, highly malignant brain tumor, previously considered as various separate histologic diagnoses, and only recently designated as a distinct WHO diagnostic entity based on cumulative molecular studies. Early reports described ETMRs as frequently disseminated and futile diseases, which has led to increasing use of upfront experimental therapies in these patients. However as well annotated molecular and clinical data on a large cohort of ETMR is lacking, the full spectrum of ETMRs clinical phenotypes and the impact of conventional treatment modalities on ETMR patient survival has remained poorly understood. Our comprehensive study of a large global registry based cohort show ETMRs are primarily with localized diseases and that aggressive intervention with maximum safe surgery, high dose chemotherapy combined with timely radiation provides significant long-term survival benefits for ETMR patients. Our analyses show ETMRs share overlapping clinical features with other childhood cancers, but have distinctly rapid disease tempo thus routine use of specific molecular assays for ETMRs is critical to avoid delays in diagnosis and treatment. We identify key clinical prognosticators and therapeutic modalities that are important for construction of future risk-stratified prospective trials. In addition, our study provides a critical framework for clinical and diagnostic work-up, as well therapeutic approaches to ETMRs and thus have immediate clinical practice implications for children diagnosed worldwide with this rare disease.

FIGURE LEGENDS

Consort Figure

Identification and analyses of primary ETMRs from the Rare Brain Tumor Consortium Clinical Registry and Biorepository.

Figure 1. Histopathologic and molecular features of primary ETMRs

A. t-Stochastic Neighbor Embedding (tSNE) plots of DNA methylation cluster patterns of 159 ETMRs relative to a representative set (n=451) of reference pediatric CNS tumors. Tumor types are denoted as colored spheres; *C19MC* -altered ETMRs and ETMR NOS are shown in a single cluster.

B. Type and frequency of *C19MC* alteration in ETMRs; NA: Not available, FISH quantification not available.

C. Whole genome copy number profile of representative ETMRs with amplification (top), gain (middle), or no alteration of *C19MC* (ETMR NOS) (bottom) generated using 850K Illumina methylation array data. Copy numbers are shown relative to a logR scale for probe intensity. Chromosome locations are designated on the X-axis; arrows indicate *C19MC* map position.

D. Representative cases of ETMRs analysed by fluorescence *in situ* hybridization (FISH) with *C19MC* specific (Red; RP11-381E3) and control (Green; RP11-45E20) BAC probes showing amplification (top), gain (middle), and no copy number alterations (bottom) of *C19MC*.

E. Representative H and E, and LIN28A immunohistochemical (IHC) stains of ETMRs with histologic features of medulloepithelioma (MEP), Embryonal Tumors with Abundant Neuropil and True Rosettes (ETANTR), ependymoblastoma (EPB) and Embryonal Brain Tumor Not Otherwise Specified (EBT NOS).

Figure 2. Clinical features of ETMR patients at diagnosis

A. Distribution of gender, n=159.

B. Distribution of age at diagnosis for 155 patients; red bars indicate median age and range.

C. Distribution of primary ETMRs in different CNS locations, n=154.

D. Representative MRI images of primary ETMRs in cortical, brainstem, parietal, intra-orbital, intraventricular and cerebellar locations are shown respectively in panels i-vi.

E. Distribution of disease stage as per Chang staging M0 (non-metastatic) and M+, M1– 4 (metastatic) of 128 primary ETMRs.

Figure 3. Characteristics of ETMR patients in intent to treat versus non-intent to treat cohort

A. Disease and treatment features of patients treated with (n=108) and without curative regimens (n=51).

B. Event free survival (EFS) and overall survival (OS) of 108 patients treated with curative intent, using Kaplan-Meier log rank analyses.

Figure 4. Impact of treatment modalities on ETMR patient survival

Log rank analyses of Event Free (EFS) and Overall survival (OS) for 108 patients with primary ETMRs treated with curative intent stratified by extent of tumor resection (GTR versus STR), receipt of high dose chemotherapy (HDC) or conventional chemotherapy (CC) and radiation (+ Rads) or no radiation (- Rads).

A-B. EFS (n= 37) and OS (n= 39) patients treated with only HDC and CC and no radiation.

C-D. EFS (n= 46) and OS (n= 48) for all patients treated with HDC, stratified by extent of surgery and radiation.

E-F. EFS (n= 40) and OS (n= 41) for patients with localized, non-brain stem ETMR treated with HDC, stratified by extent of surgery and radiation.

REFERENCES

1. Ostrom QT, Gittleman H, Truitt G, Boscia A, Kruchko C, Barnholtz-Sloan JS. CBTRUS Statistical Report: Primary Brain and Other Central Nervous System Tumors Diagnosed in the United States in 2011-2015. *Neuro Oncol.* 2018;20(suppl_4):iv1-iv86.
2. Louis DN, Perry A, Reifenberger G, von Deimling A, Figarella-Branger D, Cavenee WK, et al. The 2016 World Health Organization Classification of Tumors of the Central Nervous System: a summary. *Acta neuropathologica.* 2016;131(6):803-20.
3. Di Rocco C, Ceddia A, Iannelli A. Intracranial tumours in the first year of life. A report on 51 cases. *Acta Neurochir (Wien).* 1993;123(1-2):14-24.
4. Li M, Lee KF, Lu Y, Clarke I, Shih D, Eberhart C, et al. Frequent amplification of a chr19q13.41 microRNA polycistron in aggressive primitive neuroectodermal brain tumors. *Cancer cell.* 2009;16(6):533-46.
5. Picard D, Miller S, Hawkins CE, Bouffet E, Rogers HA, Chan TS, et al. Markers of survival and metastatic potential in childhood CNS primitive neuro-ectodermal brain tumours: an integrative genomic analysis. *Lancet Oncol.* 2012;13(8):838-48.
6. Spence T, Sin-Chan P, Picard D, Barszczyk M, Hoss K, Lu M, et al. CNS-PNETs with C19MC amplification and/or LIN28 expression comprise a distinct histogenetic diagnostic and therapeutic entity. *Acta neuropathologica.* 2014;128(2):291-303.
7. Sturm D, Orr BA, Toprak UH, Hovestadt V, Jones DTW, Capper D, et al. New Brain Tumor Entities Emerge from Molecular Classification of CNS-PNETs. *Cell.* 2016;164(5):1060-72.
8. Eberhart CG, Brat DJ, Cohen KJ, Burger PC. Pediatric neuroblastic brain tumors containing abundant neuropil and true rosettes. *Pediatr Dev Pathol.* 2000;3(4):346-52.
9. Korshunov A, Remke M, Gessi M, Ryzhova M, Hielscher T, Witt H, et al. Focal genomic amplification at 19q13.42 comprises a powerful diagnostic marker for embryonal tumors with ependymoblastic rosettes. *Acta Neuropathol.* 2010;120(2):253-60.
10. Ceccom J, Bourdeaut F, Loukh N, Rigau V, Milin S, Takin R, et al. Embryonal tumor with multilayered rosettes: diagnostic tools update and review of the literature. *Clin Neuropathol.* 2014;33(1):15-22.
11. Shah AH, Khatib Z, Niazi T. Extracranial extra-CNS spread of embryonal tumor with multilayered rosettes (ETMR): case series and systematic review. *Childs Nerv Syst.* 2018;34(4):649-54.
12. Flor I, Spiekermann M, Löning T, Dieckmann KP, Belge G, Bullerdiek J. Expression of microRNAs of C19MC in Different Histological Types of Testicular Germ Cell Tumour. *Cancer Genomics Proteomics.* 2016;13(4):281-9.
13. Viswanathan SR, Powers JT, Einhorn W, Hoshida Y, Ng TL, Toffanin S, et al. Lin28 promotes transformation and is associated with advanced human malignancies. *Nat Genet.* 2009;41(7):843-8.
14. Sato H, Terakawa Y, Tsuyuguchi N, Kuwae Y, Ohsawa M, Ohata K. Embryonal tumor with abundant neuropil and true rosettes in the brainstem: case report. *J Neurosurg Pediatr.* 2015;16(3):291-5.
15. Horwitz M, Dufour C, Leblond P, Bourdeaut F, Faure-Contier C, Bertozzi AI, et al. Embryonal tumors with multilayered rosettes in children: the SFCE experience. *Childs Nerv Syst.* 2016;32(2):299-305.
16. Jaramillo S, Grosshans DR, Philip N, Varan A, Akyuz C, McAleer MF, et al. Radiation for ETMR: Literature review and case series of patients treated with proton therapy. *Clin Transl Radiat Oncol.* 2019;15:31-7.

17. Gessi M, Giangaspero F, Lauriola L, Gardiman M, Scheithauer BW, Halliday W, et al. Embryonal tumors with abundant neuropil and true rosettes: a distinctive CNS primitive neuroectodermal tumor. *Am J Surg Pathol.* 2009;33(2):211-7.
18. Adamek D, Sofowora KD, Cwiklinska M, Herman-Sucharska I, Kwiatkowski S. Embryonal tumor with abundant neuropil and true rosettes: an autopsy case-based update and review of the literature. *Childs Nerv Syst.* 2013;29(5):849-54.
19. Jakobiec FA, Kool M, Stagner AM, Pfister SM, Eagle RC, Proia AD, et al. Intraocular Medulloepitheliomas and Embryonal Tumors With Multilayered Rosettes of the Brain: Comparative Roles of LIN28A and C19MC . *Am J Ophthalmol.* 2015;159(6):1065-74 e1.
20. Dunham C. Uncommon pediatric tumors of the posterior fossa: pathologic and molecular features. *Childs Nerv Syst.* 2015;31(10):1729-37.
21. Korshunov A, Jakobiec FA, Eberhart CG, Hovestadt V, Capper D, Jones DT, et al. Comparative integrated molecular analysis of intraocular medulloepitheliomas and central nervous system embryonal tumors with multilayered rosettes confirms that they are distinct nosologic entities. *Neuropathology.* 2015;35(6):538-44.
22. Li D, Hao SY, Wang L, Li GL, Wang JM, Wu Z, et al. Clinicoradiological features and surgical outcomes of primary intracranial medulloepitheliomas: a single-center experience and pooled analysis of individual patient data. *J Neurosurg.* 2018:1-15.
23. Lafay-Cousin L, Hader W, Wei XC, Nordal R, Strother D, Hawkins C, et al. Post-chemotherapy maturation in supratentorial primitive neuroectodermal tumors. *Brain Pathol.* 2014;24(2):166-72.
24. La Spina M, Pizzolitto S, Skrap M, Nocerino A, Russo G, Di Cataldo A, et al. Embryonal tumor with abundant neuropil and true rosettes. A new entity or only variations of a parent neoplasms (PNETs)? This is the dilemma. *J Neurooncol.* 2006;78(3):317-20.
25. Uro-Coste E, Masliah-Planchon J, Siegfried A, Blanluet M, Lambo S, Kool M, et al. ETMR-like infantile cerebellar embryonal tumors in the extended morphologic spectrum of DICER1-related tumors. *Acta neuropathologica.* 2019;137(1):175-7.
26. Lambo S, Grobner SN, Rausch T, Waszak SM, Schmidt C, Gorthi A, et al. The molecular landscape of ETMR at diagnosis and relapse. *Nature.* 2019;576(7786):274-80.
27. de Kock L, Priest JR, Foulkes WD, Alexandrescu S. An update on the central nervous system manifestations of DICER1 syndrome. *Acta Neuropathol.* 2019.
28. Sin-Chan P, Mumal I, Suwal T, Ho B, Fan X, Singh I, et al. A C19MC -LIN28A-MYCN Oncogenic Circuit Driven by Hijacked Super-enhancers Is a Distinct Therapeutic Vulnerability in ETMRs: A Lethal Brain Tumor. *Cancer Cell.* 2019;36(1):51-67.e7.
29. Spence T, Perotti C, Sin-Chan P, Picard D, Wu W, Singh A, et al. A novel C19MC amplified cell line links Lin28/let-7 to mTOR signaling in embryonal tumor with multilayered rosettes. *Neuro Oncol.* 2014;16(1):62-71.
30. Schmidt C, Schubert NA, Brabetz S, Mack N, Schwalm B, Chan JA, et al. Preclinical drug screen reveals topotecan, actinomycin D, and volasertib as potential new therapeutic candidates for ETMR brain tumor patients. *Neuro Oncol.* 2017;19(12):1607-17.

Consort Figure

Khan and Solano *et al.*, 2020

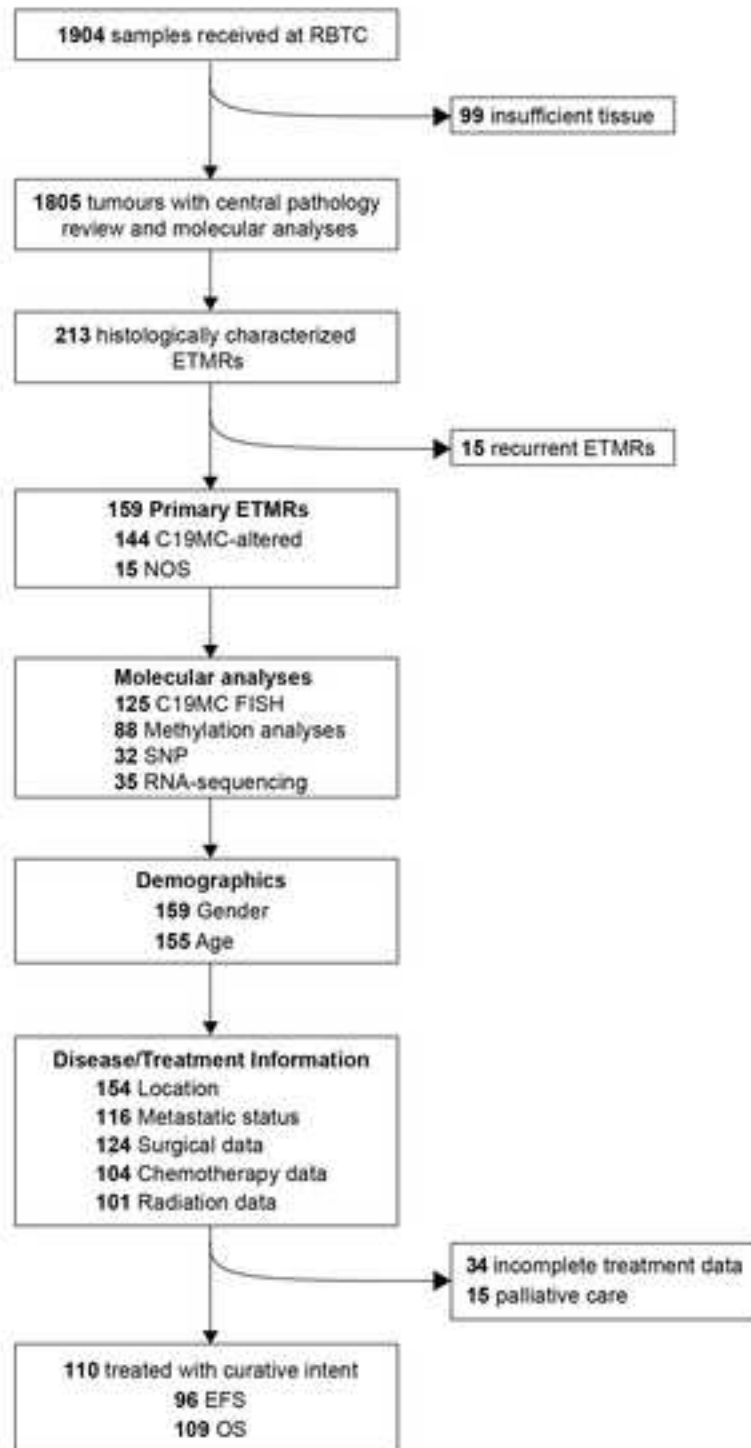


Fig 1

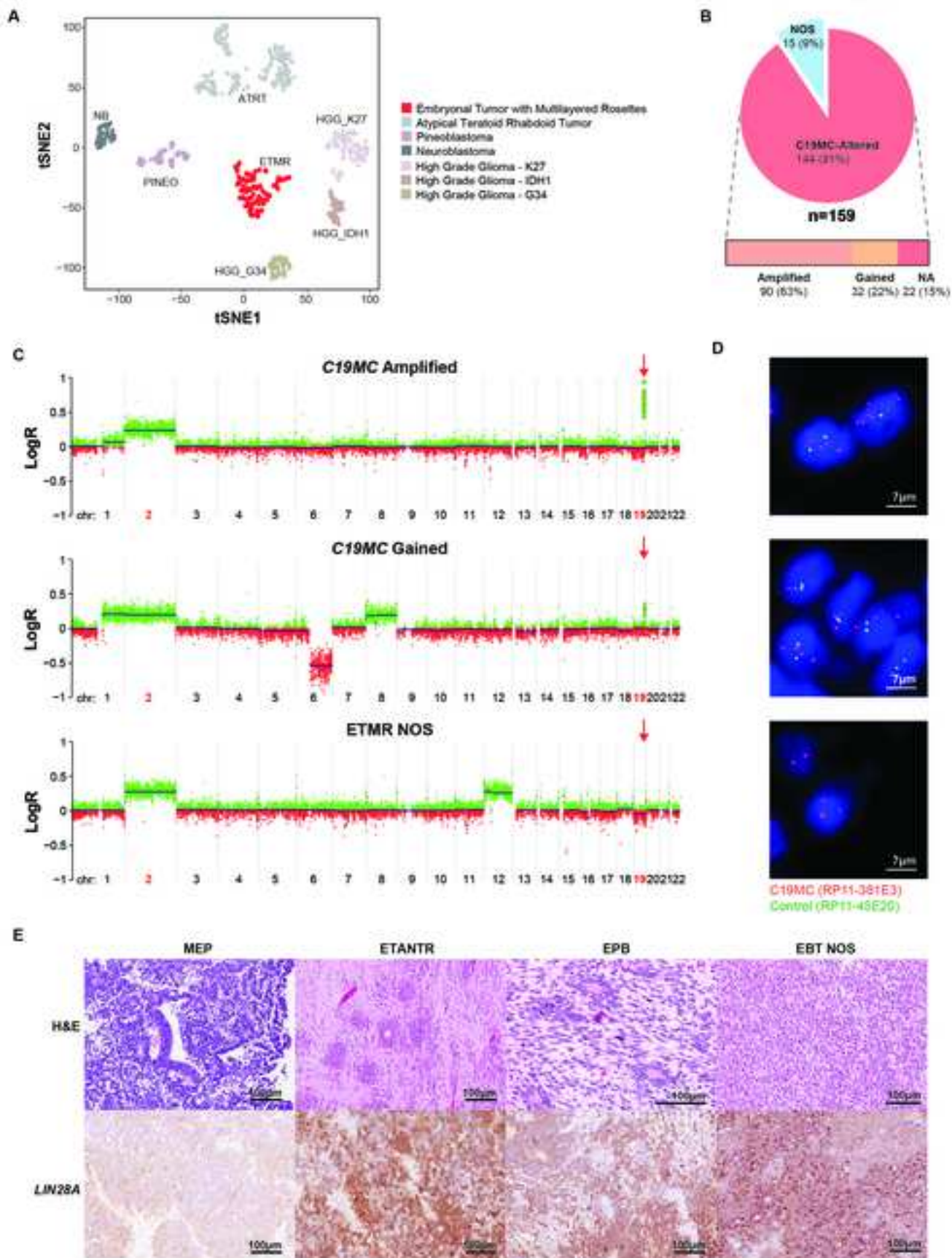


Fig 2

Khan and Solano *et al.*, 2020

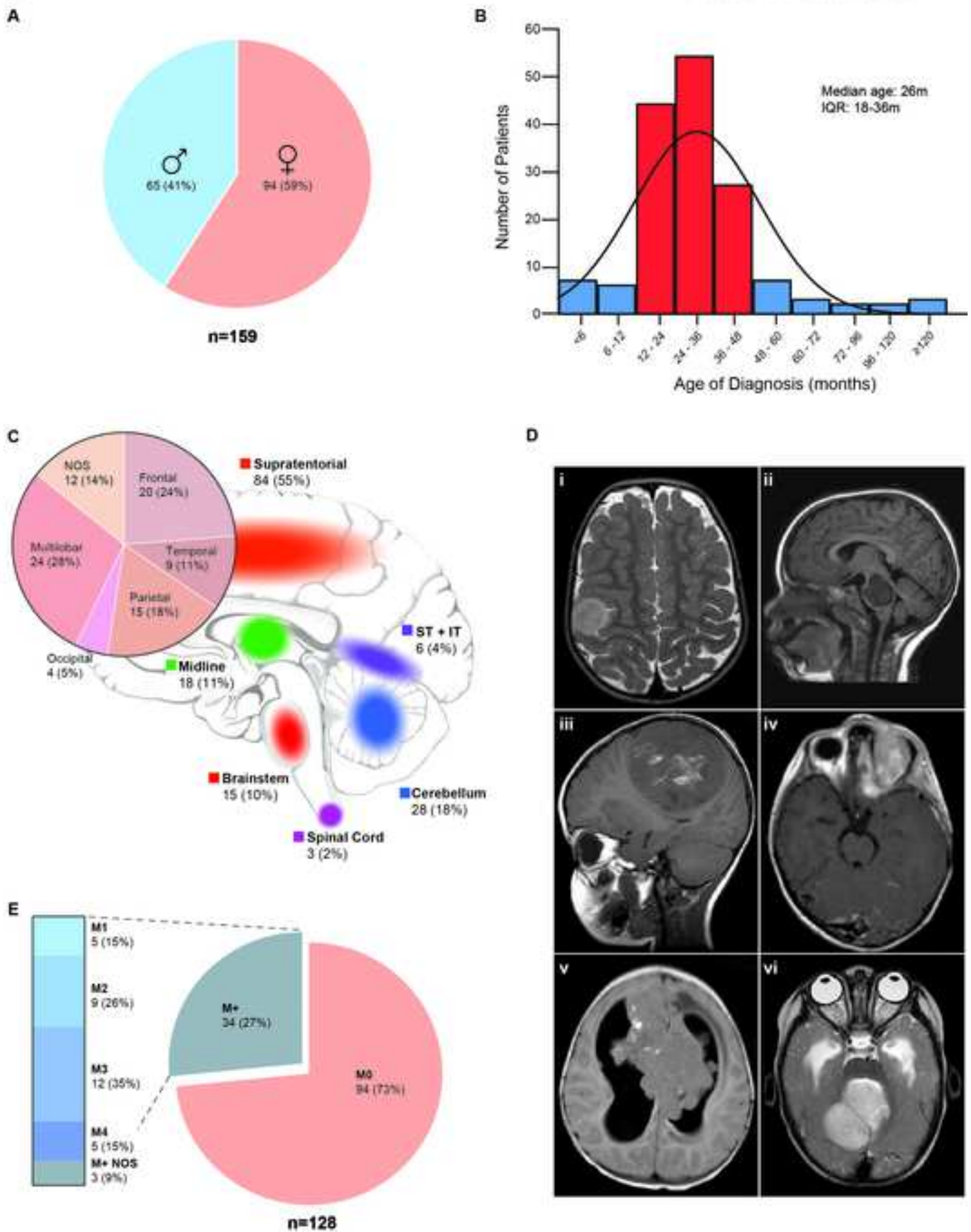


Fig 3

A

	Whole Cohort	
	Intent to Treat Cohort	Non-Intent to Treat Cohort*
Total Analysed	108	51
Age	108	47
Median (months) (IQR)	25 (18-36)	24 (19 - 36)
Sex	108	51
Female	69 (64%)	25 (49%)
Male	39 (36%)	26 (51%)
C19MC Status	108	51
Altered	102 (94%)	42 (82%)
NOS	6 (6%)	9 (18%)
Location	108	46
Non-Brainstem	96 (89%)	43 (95%)
Brainstem	12 (11%)	3 (5%)
Metastatic Status	108	20
M0	82 (76%)	12 (80%)
M+	26 (24%)	8 (40%)
Tumor Resection	101	23
GTR	49 (48%)	5 (22%)
STR	43 (43%)	13 (56%)
Biopsy	9 (9%)	5 (22%)
Chemotherapy	124	..
HDC	58 (57%)	
CC	44 (43%)	
Radiation	99	..
Yes	43 (43%)	
No	56 (57%)	

B

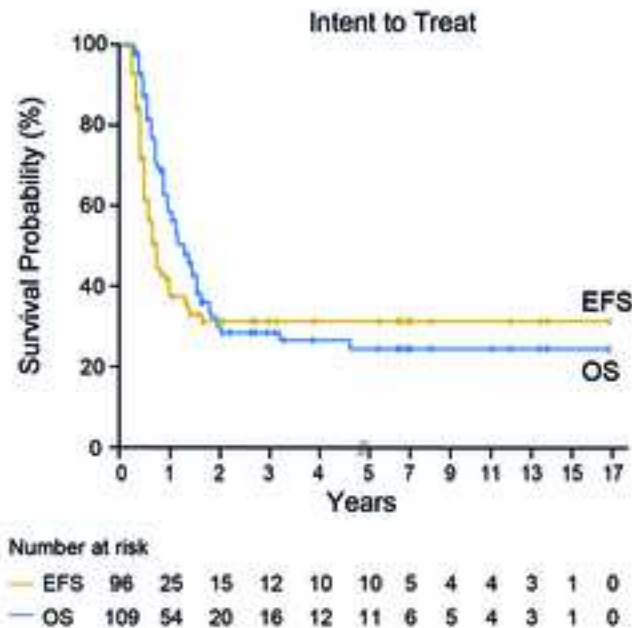


Table 1. EFS and OS for patients treated with curative intent

	% EFS (95% CI)						% OS (95% CI)		
	n	3 month	4 month	6 month	12 month	24 month	n	2 year	4 year
Entire Cohort	94	84 (77 - 91)	72 (62 - 81)	57 (47 - 67)	37 (26 - 48)	31 (20 - 41)	107	29 (20-38)	27 (18- 37)
Location	93						107		
Non-Brainstem	82	86 (79 - 94)	76 (66 - 85)	64 (53 - 74)	42 (30 - 54)	35 (23 - 47)	95	35 (23 - 47)	35 (23 - 47)
Brainstem	11	69 (44 - 94)	46 (19 - 73)	8 (0 - 22)	8 (0 - 22)	8 (0 - 22)	12	8 (0 - 22)	8 (0 - 22)
Metastatic Status	89						107		
M0	71	84 (76 - 92)	70 (60 - 81)	57 (45 - 68)	42 (30-54)	36 (24 - 48)	81	36 (24-47)	33 (22 - 45)
M+	18	82 (64 - 100)	77 (56 - 97)	45 (20 - 69)	19 (4 - 34)	7 (0 - 21)	26	4 (0-13)	4 (0 - 13)
Tumor Resection	92						92		
GTR	49	93 (86 - 100)	87 (77 - 96)	72 (60 - 85)	54 (39 - 70)	48 (32 - 64)	49	44 (29-59)	40 (24 - 56)
STR	43	77 (64 - 90)	63 (48 - 79)	40 (24 - 56)	24 (9 - 39)	17 (4 - 30)	43	21 (8-21)	14 (0 - 28)
Chemotherapy	92						102		
CC	36	64 (48 - 80)	51 (34 - 68)	38 (21 - 54)	24 (9 - 39)	15 (2 - 29)	44	18 (5-30)	11 (0 - 21)
HDC	56	96 (91 - 100)	85 (75 - 95)	70 (57 - 82)	46 (32 - 60)	44 (27 - 55)	58	38 (24-52)	38 (24 - 52)
Radiation	91						99		
Yes	40	97 (90 - 104)	84 (72 - 96)	76 (63 - 90)	56 (39 - 72)	49 (32 - 66)	43	43 (27-59)	43 (27 - 59)
No	51	88 (79 - 97)	88 (79 - 97)	38 (24 - 52)	21 (9 - 33)	14 (3 - 26)	56	21 (9-33)	14 (3 - 25)
C19MC Status	89						107		
Altered	84	83 (76 - 91)	70 (61 - 80)	56 (45 -66)	35 (24 - 46)	30 (20 - 41)	101	26 (17 - 36)	26 (17 - 36)
NOS	5	100	100	75 (32 - 100)	66 (32 - 100)	50 (1 - 99)	6	33 (0 - 83)	33 (0 - 83)

EFS: Event Free Survival, OS: Overall Survival, GTR: Gross Total Resection, STR: Subtotal Resection, HDC: High Dose Chemotherapy, CC: Conventional Chemotherapy

Table 2. COX proportional Hazard Analyses of clinical and treatment variables

Variable	Subjects	Hazard Ratio (95% CI)	p value
Univariate OS			
Sex (male vs female)	107	0.82 (0.50-1.33)	0.43
Age (continuous)	107	0.99 (0.98-1.00)	0.42
All Locations	108	0.83 (0.74-0.93)	0.002
Non-Brainstem vs Brainstem	107	0.40 (0.21-0.75)	0.005
Metastatic Status (M0 vs M+)	107	0.44 (0.26-0.74)	0.002
C19MC (Altered vs NOS)	107	0.40 (0.09-1.66)	0.21
Tumor Resection (GTR vs STR)	92	0.43 (0.25-0.72)	0.002
Chemotherapy (HDC vs CC)	102	0.41 (0.25-0.67)	<0.001
Radiation (yes vs no)	99	0.48 (0.25-0.81)	0.005
Multiple Variable EFS			
	78		
Tumour Resection (GTR vs STR)	43 : 35	0.45 (0.25-0.81)	0.01
Chemotherapy (HDC vs CC)	49 : 29	0.45 (0.25-0.81)	0.01
Radiation (yes vs no)	32 : 46	0.23 (0.12-0.47)	<0.001
Multiple Variable OS			
	80		
Tumour Resection (GTR vs STR)	44 : 36	0.38 (0.21-0.68)	0.001
Chemotherapy (HDC vs CC)	50 : 30	0.55 (0.31-0.97)	0.04
Radiation (yes vs no)	34 : 46	0.32 (0.16-0.60)	<0.001

EFS: Event Free Survival, OS: Overall Survival, GTR: Gross Total Resection, STR: Subtotal Resection, HDC: High Dose Chemotherapy, CC: Conventional Chemotherapy

Table 3. Clinical and treatment characteristics of patients with EFS < 6 months and OS > 13 months

	EFS ≤ 6 months	OS ≥ 13 months	p value
Number of patients	48	56	
Median Age (months)	24	25	
Gender			
Female	29 (60%)	36 (64%)	0.69
Male	19 (40%)	20 (36%)	
Tumour Location			
Non-Brainstem	38 (79%)	52 (93%)	0.05
Brainstem	10 (21%)	4 (7%)	
Metastasis			
Yes	11 (23%)	9 (16%)	0.31
No	37 (77%)	47 (84%)	
Tumor Resection			
GTR	13 (32%)	35 (66%)	0.05
STR	28 (68%)	18 (34%)	
Chemotherapy			
HDC	22 (49%)	37 (70%)	0.04
CC	23 (51%)	16 (30%)	
Radiation			
Yes	12 (35%)	29 (63%)	0.01
No	22 (65%)	17 (37%)	
Survival Status			
Alive	11 (23%)	29 (52%)	0.01
Dead	37 (77%)	27 (48%)	
Median EFS (months)	4 (1-6)	15 (1-165)	
Median OS (months)	7 (3-132)	22 (13-165)	

EFS: Event Free Survival, OS: Overall Survival, GTR: Gross Total Resection, STR: Subtotal Resection, HDC: High Dose Chemotherapy, CC: Conventional Chemotherapy