

# Cumulative survival profiling: a new PAP-based method for detecting heteroresistance in staphylococcal clinical isolates

Ramzi A. Alsallaq<sup>a#</sup>, Tina H. Dao<sup>a</sup>, Jason W. Rosch<sup>a</sup>,  
Elisa Margolis<sup>a</sup>

<sup>a</sup> Department of Infectious Diseases, St. Jude Children's  
Research Hospital, 262 Danny Thomas Place, MS 320,  
Memphis, Tennessee 38105-3678, USA

#Address correspondence to Ramzi Alsallaq, [raalsalla@stjude.org](mailto:raalsalla@stjude.org)

Competing interest: All authors declare no competing or conflict of interest

## Abstract

The area under the population analysis profile (PAP) is used in the gold standard method for detecting heteroresistance in staphylococci. We tested the hypothesis that the initial inoculum strongly influences the area under the population analysis profile. We sought to interpret this dependence and develop a new metric that lacks this dependence to retrospectively detect heteroresistance to vancomycin in coagulase-negative staphylococcal (CoNS) isolates.

We tested our hypothesis on 20 PAPs from the heteroresistant positive control isolate (Mu3) and 7 PAPs from one CoNS isolate which is associated with poor clinical response. The area under the PAP depended linearly ( $p < 0.001$ ) on the initial inoculum. We interpreted the slope to be the cumulative survival under vancomycin concentration gradient. The statistical distribution of the cumulative survival for Mu3 and the CoNS isolate constituted the cumulative survival profiles for each. The profiles reflected spectrum of

23 response under vancomycin gradient with the left-tail of CoNS isolate profile located near the median of  
24 Mu3 profile indicating the heteroresistance of the CoNS isolate and that the most resistant in the spectrum  
25 are likely to be associated with poor clinical response. We estimated that about two-third of the CoNS  
26 from unique participants are heteroresistant with 80% of heteroresistant isolates may be associated with a  
27 poor clinical response.

## 28 Background

29 Vancomycin is the last-resort treatment for infections caused by multi-drug-resistant bacteria, such as  
30 methicillin-resistant *Staphylococcus aureus* (MRSA). However, therapeutic failures with vancomycin  
31 have been reported in cases where *in vitro* assays measuring the clinical minimum inhibitory  
32 concentration (MIC) indicated susceptibility to vancomycin. These infections are caused by  
33 heterogeneous vancomycin-intermediate staphylococci. In this context, a single isolate represents a  
34 majority of the susceptible population to vancomycin, whereas a tiny proportion of bacterial cells  
35 demonstrate resistance to vancomycin [1, 2]. There have been several cases of reduced susceptibility to  
36 vancomycin only a few decades after the first use of vancomycin. In 1996, a 64-year-old man, who  
37 acquired MRSA pneumonia after an operation for primary lung cancer, experienced failed treatment after  
38 an extensive course of vancomycin [3]. The causative MRSA strain, Mu3, was isolated from sputum and  
39 was categorized as heterogenous vancomycin-resistant *S. aureus* (hVISA). Since then, various methods of  
40 detection have shown vancomycin heteroresistance in other staphylococcal strains, including coagulase-  
41 negative staphylococci (CoNS) [4–10].

42 The presence of the resistant subpopulation in multi-resistant or opportunistic pathogens (e.g., *S.*  
43 *epidermidis* and *S. haemolyticus*) contributes to reduced efficacy of vancomycin, limiting treatment  
44 options, especially for patients undergoing chemotherapy for whom vancomycin is the last resort against  
45 bacterial infection. The resistant subpopulation is very difficult to detect and is often misclassified by the  
46 common clinical diagnostic tests. The Clinical and Laboratory Standards Institute methods, which use an  
47 inoculum of approximately  $10^4$  CFU per assay, cannot detect the resistant subpopulation, which is present  
48 at a frequency of  $10^{-6}$  or lower [11]. Therefore, detecting heteroresistance in clinical isolates with high  
49 accuracy is critical for clinical decision making.

50 The gold standard method for detecting heteroresistance to an antibiotic in staphylococcal clinical isolates  
51 [12–15] is the modified area under the curve of the population analysis profile (PAP-AUC) method  
52 described by Wootton et.al. [16], which uses the Mu3 strain as a positive-control comparator. In the PAP-  
53 AUC method, a prepared initial inoculum of the bacterial isolate is plated into different plates forming a  
54 gradient of antibiotic concentrations, then the bacterial density that survived the antibiotic at each  
55 concentration is recorded to construct the population analysis profile (PAP). A similar PAP is prepared

56 for Mu3 in tandem of a batch of one [17] or several [16] isolates' PAPs and used for comparison. Usually,  
57 the initial inoculum values varies widely, by as much as  $1.5\log_{10}$  [18–23], across the batch and differs  
58 from that of the Mu3. It has been reported that the area under the PAP curve is influenced by the initial  
59 inoculum [10]. Further, the use of a single Mu3 PAP to detect heteroresistance in a batch of isolates,  
60 hinders the necessary cross-validation which require replicas of Mu3 PAPs [16] and falsely presumes that  
61 a single Mu3 PAP is a representative of the broad spectrum that typically characterizes heteroresistance  
62 [1].

63 Here, we used replica PAPs of positive controls to study the nature, the statistical significance and  
64 interpretation of the dependence of AUC on the initial inoculum. We employed a PAP-based method that  
65 lacks the influence of the initial inoculum, characterizes the broad spectrum of heteroresistance, and  
66 allows cross-validation to detect heteroresistance and heteroresistance that is associated with poor clinical  
67 response in retrospective cohort of CoNS isolates that was obtained from participants in whom CoNS  
68 central-line associated bloodstream infection (CLABSI) developed during treatment from leukemia.

## 69 Methods

### 70 Bacterial isolates

71 We retrospectively studied 74 isolates obtained with permission from all patients in whom coagulase-  
72 negative staphylococcal central-line bloodstream infection (CoNS-CLABSI) developed during treatment  
73 for leukemia at our institution between January 1, 2010, and March 28, 2016. The information regarding  
74 these isolates were published before [24].

### 75 Population analysis profiles (PAPs)

76 Population analysis profiling was the basis for all heteroresistance-related detection in clinical isolates.  
77 PAP was performed according to standard preparation techniques for staphylococci [16, 25]. Each isolate  
78 was grown in 10 mL TSB overnight at 37°C. Overnight stationary-phase cultures were then serially  
79 diluted 1:100 in 1×PBS, ranging from  $10^{-2}$  to  $10^{-8}$ , and 100  $\mu\text{L}$  of each dilution was streaked on BHI agar  
80 plates containing 0, 1, 2, 3, 4, 6, or 8  $\mu\text{g}/\text{mL}$  of vancomycin. Each isolate was inoculated onto duplicate  
81 plates at each dilution at each vancomycin concentration. After incubation for 48 hours at 37°C, colonies  
82 were counted to determine and plot the counts of bacteria in  $\text{CFU}/\text{mL}$  growing at each antibiotic  
83 concentration. The resulting PAPs were used in the analyses. The area under the actual colony-counts was  
84 used unless specified otherwise; for example the area under the  $\log_{10}$  of the colony-counts was used for  
85 Wootton et al.'s method [16].

86 The isolates were analyzed in two batches, with 44 isolates (59%) that were analyzed at a later stage  
87 requiring addition of 0.2% yeast extract (catalog number 212750, BD Sciences) to the overnight culture

88 as a growth supplement. Each batch run was accompanied by replicate runs of Mu3 strain as a positive  
89 control (3 and 7 replicas for the first and second patch, respectively, with growth supplement added to  
90 each of the 7 replicas' overnight cultures). To determine the effect of the initial inoculum on the area  
91 under the PAP, we prospectively obtained 10 more PAPs for Mu3 and 7 PAPs for 1 CoNS-CLABSI  
92 isolate (CoNSB18) from 1:2 dilutions and 2x and 4x concentrations to create initial inoculum values  
93 spanning the range  $10^7$  to  $10^9$  *CFU/mL* for Mu3 and  $10^8$  to  $10^9$  *CFU/mL* for CoNSB18 for overnight  
94 cultures that otherwise were prepared and used to generate PAPs as described previously.

## 95 Etest

96 Each clinical isolate and Mu3 were grown in 10mL of TSB overnight at 37°C and were then diluted 1:100  
97 in fresh 10 mL TSB. The bacterial strains were incubated at 37°C until OD at 600 nm 0.2 (McFarland unit  
98 2). Then 100  $\mu$ L of the culture were spread on BHI before placing the vancomycin Etest strips (bio-  
99 Mérieux, Marcy-l'Étoile, France) on the plate. The plates were incubated at 37°C for 48 hours. Each  
100 isolate was classified as heteroresistant if isolated colonies were observed in the inhibition eclipse, as  
101 determined by two independent readings.

## 102 Quantitative and statistical analysis

103 We created a new format for the analyses whereby each singlet PAP contributes a row, and the columns  
104 enlist the bacterial counts in *CFU/mL* for the PAP at 0,1,2,3,4,6, and 8  $\mu$ g/mL of vancomycin. Each PAP  
105 from the isolates and Mu3 was first checked for missing initial inoculum or for having two data points or  
106 fewer and dropped if either was true. None of the 20 Mu3 PAPs were dropped, but 14 duplicated PAPs  
107 from 7 isolates and 3 singlets were dropped from the analyses for not passing either of the two filters. The  
108 remaining isolate PAPs were then divided into two unique isolate sets: training and verification sets of 66  
109 and 65 singlet PAPs from 67 isolates, which included 56 and 54 first-episode isolates from 56 and 54  
110 patients, respectively.

111 The area under the counts and the area under the log10 counts were calculated by using *auc* module from  
112 the Python package scikit-learn and were validated with corresponding calculations by using GraphPad  
113 Prism 7.

114 The linear relationship between the area under the bacterial counts and the counts at 0  $\mu$ g/mL (the initial  
115 inoculum) was firstly explored using ordinary linear square regression fit; the goodness of which was  
116 judged by the p-values for the regression coefficients (slope and intercept) and the R-squared value. A  
117 better fit in terms of the p-values for the coefficients was obtained using mixed effect linear regression  
118 model with random intercept to adjust for PAP to PAP variation. For the cumulative survival profiling  
119 (CSP) method we obtained the distribution of the cumulative survival under vancomycin gradient of the

120 reference strain using a mixed-effect linear regression analyses within Bayesian framework (further  
121 details are in the Supplementary Information Appendix). Because obtaining replica PAPs is not practical  
122 for the CoNS-CLABSI isolates, we estimated the cumulative survival using a single PAP by dividing the  
123 area under the counts by the initial inoculum. We call this estimate point-estimate-profiling (PEP).

124 We used the 2.5% quantile of the Bayesian credible interval of the distribution obtained by CSP for the  
125 reference as a threshold for detection. The detection accuracy of this threshold is determined through  
126 cross-validation over 50 iterations by dividing available PAPs of the reference into reference (80% of  
127 PAPs) and validation (20%) sets randomly selected in each iteration and then obtaining the mean and  
128 standard deviations of the percentage of validation PAPs detected by the method over the iterations. An  
129 isolate is heteroresistant if its estimated cumulative survival using PEP is  $\geq$  the 2.5% quantile of the  
130 Bayesian credible interval of the cumulative survival estimated from the reference set.

131 The cross validation of heteroresistance detection over 20 Mu3 PAPs was compared for four methods:  
132 CSP, Wootton's (AUC under the log<sub>10</sub> counts) [16, 18, 21, 25, 26], semi-Wootton's (AUC under the  
133 counts) [27–29] and altered semi-Wootton's (counts are altered to match the initial inoculum of the  
134 reference before calculating AUC) [10]. The detection accuracy via cross-validation for each method was  
135 estimated like the CSP method except for the detection criterion. For all methods except the CSP, a given  
136 PAP from the validation set is heteroresistant if AUC is  $\geq$  0.9 the AUC of the averaged PAP of the  
137 reference.

138 Following successful cross-validation, credible detection of heteroresistance in the CoNS-CLABSI  
139 isolates by the CSP method is deemed possible. The total number of twenty Mu3 PAPs encompassed the  
140 reference set from which a distribution of the cumulative survival was obtained and the cumulative  
141 survival for each isolate was estimated by PEP and compared with the 2.5% quantile of the reference  
142 similar to what is described above for the Mu3 validation set.

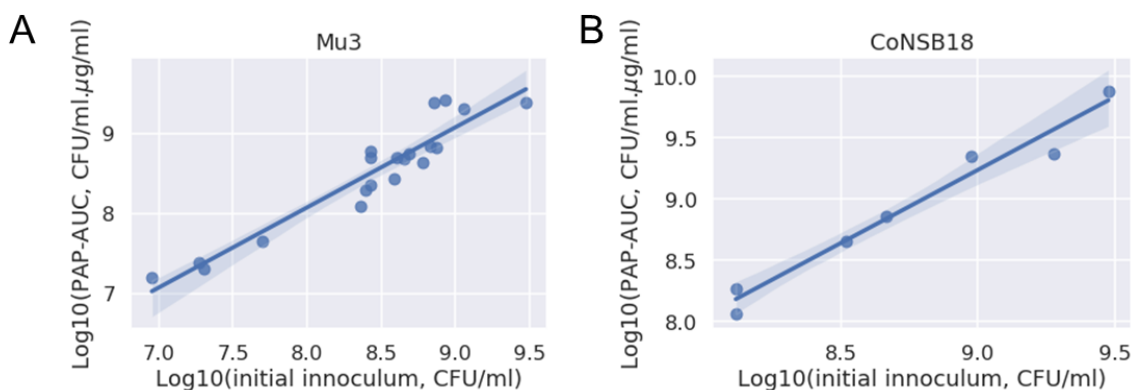
143 To detect heteroresistance that may be associated with poor clinical response, we used CSP on 7 PAPs  
144 from 1 of the CoNS isolates (CoNSB18), which is found to be both heteroresistant and associated with  
145 poor clinical response under vancomycin treatment. As was done for Mu3, the detection accuracy was  
146 measured first by cross-validation. Association of detections with the measured poor clinical response  
147 was determined by using Cox proportional hazard regression.

148 We verified the accuracy and robustness of our CSP-based detections over replicated PAPs of isolates by  
149 comparing heteroresistance detection (with and without association with poor clinical response) for  
150 duplicates of 64 common isolates in the training and the verification sets.

151 **Results**

152 **Initial inoculum strong influence on PAP-AUC**

153 It has been reported by one study [10] that the initial inoculum has a large influence on PAP-AUC. Using  
 154 20 Mu3 PAPs, we confirmed the strong association between the area under the counts and the initial  
 155 inoculum ( $R^2 = 0.90$  in the log space; Figure 1 A). A one  $\log_{10} \mu\text{g}/\text{mL}$  change in the initial inoculum of  
 156 Mu3 increases the area under the PAP counts by  $1.0 \log_{10} \text{CFU}/\text{mL} \cdot \mu\text{g}/\text{mL}$  ( $p < 0.001$ ). This strong  
 157 dependence holds true also for clinical isolates ( $R^2 = 0.90$ ; Figure 1 B) by plating one selected CoNS  
 158 isolate (CoNSB18) using broad range of initial inoculum values. These results indicate that in PAP-based  
 159 methods which detect heteroresistance by comparing PAP-AUCs, differences in the initial inoculums of  
 160 Mu3, and an isolate such as CoNSB18 will propagate to influence their heteroresistance detection. An  
 161 alternative metric to the area under the curve that is free from the influence of the initial inoculum is  
 162 needed to adequately compare isolates to Mu3.



163  
 164 Figure 1: The strong dependence of the area under the counts on the initial inoculums for A) Mu3 using  
 165 20 PAPs and B) a selected CoNS isolate (CoNSB18) using 7 PAPs. In both cases,  $R^2 = 0.90$  and  $p < 0.001$ .

166 **New metric: the cumulative survival under the antibiotic concentration gradient**

167 The strong relationships in Figure 1 suggest the following model:

168 *Bacterial counts (CFU/mL) at vancomycin concentration c = initial inoculum (CFU/mL) × survival*  
 169 *probability at the given concentration c* -----(1)

170 which leads to (see Supplementary Information Appendix for the derivation and explanation)

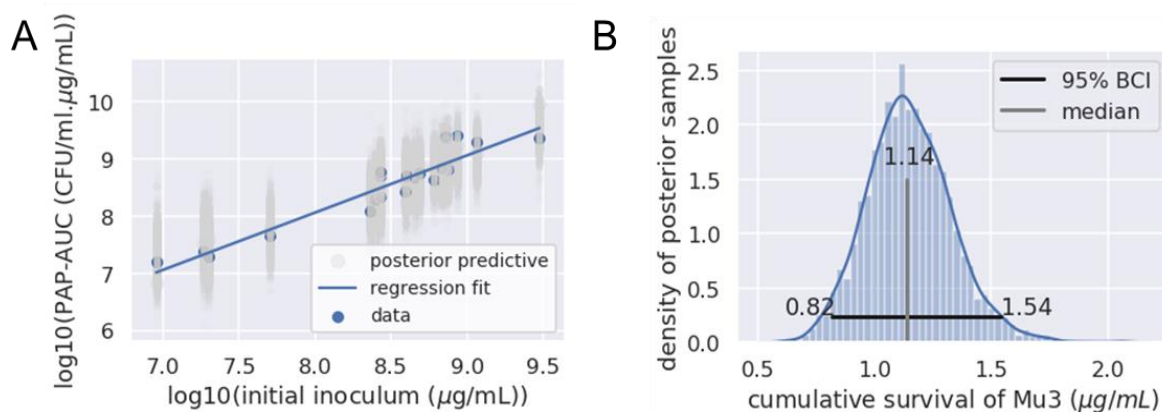
171 *Area under counts (CFU/mL·μg/mL) = initial inoculum (CFU/mL) × cumulative survival under the*  
 172 *concentration gradient (μg/mL)* -----(2)

173 That is, for a single isolate (e.g. Mu3 or CoNSB18 in Figure 1), we interpret the y-intercept in Figure 1 as  
 174 the log<sub>10</sub> of the “cumulative survival under the antibiotic gradient”. In the above model, the information  
 175 specifying the experience of the isolate under an antibiotic gradient is fully specified by the cumulative  
 176 survival under that gradient, which is the needed metric free from the influence of the initial inoculum.

### 177 Cumulative survival profiling (CSP) of Mu3

178 Here we used the CSP method to infer the full distribution of the cumulative survival of Mu3 under a  
 179 vancomycin concentration gradient up to 8  $\mu\text{g}/\text{mL}$  utilizing 20 Mu3 PAPs.

180 The Bayesian linear mixed-effects regression model fits data well, as shown in Figure 2 A, and the  
 181 inferred cumulative survival for Mu3 (Figure 2 B) reveals not a single value but a wide distribution, with  
 182 a median of 1.14  $\mu\text{g}/\text{mL}$  and a 95% Bayesian credible interval (BCI) of 0.82-1.54  $\mu\text{g}/\text{mL}$ . To utilize this  
 183 distribution, we use the 2.5% quantile of the 95% BCI (q2.5%) to verify and detect heteroresistance of  
 184 Mu3 profiles and of clinical isolates, respectively.



185  
 186 Figure 2: Cumulative survival profiling (CSP) of Mu3. A) Bayesian linear mixed-effects regression fit, B)  
 187 the inferred distribution of the cumulative survival of Mu3 under a vancomycin gradient up to 8  $\mu\text{g}/\text{mL}$ .

### 188 Cross-validation of Mu3 heteroresistance: comparison with other methods

189 Compared to three other PAP-based methods used in the literature, the q2.5% of the inferred distribution  
 190 of cumulative-survival of Mu3 (CSP method) was superior (Table 1), cross-validating the  
 191 heteroresistance of Mu3 PAPs, on average, 82% of the time. This indicates that the CSP of Mu3 would  
 192 detect heteroresistance in clinical isolates at a rate higher than that of the three other methods.

193 Table 1: Cross-validation of 20 Mu3 PAPs using four methods. SD=standard deviation. Detection  
 194 accuracy=% of Mu3 PAPs detected to be heteroresistant.

Method	AUC (mean, SD)	Detection accuracy
Wootton's <sup>1</sup>	(29.2,7.2)	52 +/- 23

semi-Wootton's <sup>2</sup>	(7.4,8.7) 10 <sup>8</sup> <i>CFU/mL.µg/mL</i>	46 +/- 26
Altered semi-Wootton's <sup>3</sup>	(1.34,0.78)	60 +/- 26
CSP applied to Mu3	Uses cumulative survival	82 +/- 22

195 <sup>1</sup>AUC under the log10 counts [16, 18, 21, 25, 26].

196 <sup>2</sup>AUC under the counts [24, 27–29].

197 <sup>3</sup>counts are altered to match the initial inoculum of the reference before calculating AUC [10].

## 198 Prevalence of heteroresistance in CoNS-CLABSI

199 Next, we used the cross-validated q2.5% threshold to detect heteroresistance in a set of 66 CoNS-  
200 CLABSI PAPs with 56 PAPs representing first-episode samples from 56 participants (training set).

201 Heteroresistance was detected in 37, suggesting a 66% prevalence among participants from whom first-  
202 episode CoNS-CLABSI were sampled (Table 2).

203 Table 2: Prevalence of heteroresistance in training and verification sets of CoNS-CLABSI as revealed by  
204 q2.5% of the CSP of Mu3. The numbers and percentages of poor clinical response cases as measured by a  
205 clinical laboratory in our institution are also shown.

CoNS-CLABSI set	Total			First episode		
	N	Heteroresistant, n (%)	Poor clinical response, n (%)	N	Heteroresistant, n (%)	Poor clinical response, n (%)
Training	66	46 (70)	18 (27)	56	37 (66)	15 (27)
Verification	65	48 (74)	18 (28)	54	39 (72)	15 (28)

206

207 We verified the accuracy of our detections over replicated PAPs of isolates by using another set of 65  
208 CoNS-CLABSI PAPs (verification set) with 64 replicated PAPs of isolates in the training set and 54  
209 PAPs representing the first episode from 54 participants. The estimated prevalence of heteroresistance in  
210 the first-episode CoNS-CLABSI PAPs in the verification set is 72% (Table 2). The CSP method  
211 accurately classified 58 of 64 replicas by heteroresistance status, giving an accuracy of 91% over  
212 replicated PAPs.

213 The association of detected heteroresistance with measured poor clinical response for CoNS-CLABSI is  
214 not statistically significant ( $p > 0.05$ ) regardless of the set of isolates. This is likely because, within the  
215 spectrum of the hVISA heteroresistance revealed by the distribution for Mu3 in Figure 2 B, only those  
216 with the highest cumulative survival might be intuitively associated with poor clinical response.

## 217 Detection of poor clinical response attributable to heteroresistant CoNS-CLABSI

218 To establish whether poor clinical response might be attributable to detected heteroresistance, we needed  
219 to estimate the proportion of CoNS-CLABSI that are *potentially* associated with poor clinical response by



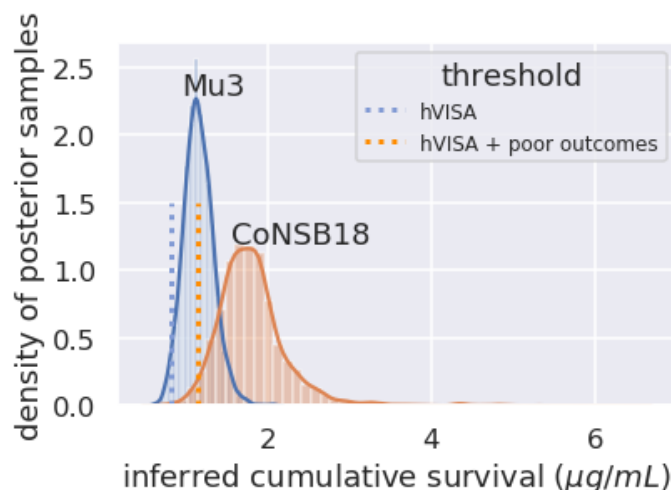
220 profiling a CoNS-CLABSI isolate that is both heteroresistant and associated with poor clinical response.  
 221 The isolate CoNSB18, with the PAP replicas in Figure 1B, fitted these characteristics. The CSP for this  
 222 isolate revealed a cumulative survival of 1.76 (95% BCI:1.15-2.81)  $\mu g/mL$ , suggesting a threshold of 1.15  
 223  $\mu g/mL$  to detect heteroresistant CoNS-CLABSI that may be associated with poor clinical response. Cross-  
 224 validating the 7 PAPs for this isolate by using this q2.5% threshold gave an average detection accuracy of  
 225 80% (SD=33%) for the heteroresistance that may be associated with poor clinical response.

226 We then detected similar isolates among our CoNS-CLABSI samples using this cross-validated threshold  
 227 (Table 3). Cox proportional hazard regression analyses reveal statistically significant association between  
 228 our detections and time to measured poor clinical response or censorship ( $p < 0.05$ ), regardless of the set of  
 229 isolates (Table 3). We estimated that more than 80% (31/37 and 32/39 from the training and verification  
 230 sets, respectively) of heteroresistant CoNS-CLABSI may be associated with poor clinical response. The  
 231 threshold that successfully detected heteroresistance with potential association with poor clinical response  
 232 is about the median for Mu3 CSP (Figure 3).

233 Table 3: Prevalence of heteroresistance that is potentially associated with poor clinical response in  
 234 training and verification sets of CoNS-CLABSI as revealed by q2.5% of the CSP of CoNSB18.

CoNS-CLABSI set	Total			First episode		
	N	Heteroresistant and associated with poor outcomes, n (%)	p-value	N	Heteroresistant and associated with poor outcomes, n (%)	p-value
Training	66	40 (61)	0.018	56	31 (55)	0.019
Verification	65	41 (63)	0.030	54	32 (59)	0.039

235



236  
 237 Figure 3: Inferred cumulative survival profiles for Mu3 and CoNSB18. The cumulative survival threshold  
 238 that successfully detected heteroresistant isolates with potential association with poor clinical response  
 239 (hVISA + poor outcomes) at 1.15  $\mu\text{g}/\text{mL}$  is higher than the threshold that successfully detected all  
 240 heteroresistant isolates regardless of association with clinical outcomes (hVISA) at 0.82  $\mu\text{g}/\text{mL}$ .

#### 241 Comparison with Etest

242 Next, we compared Etest classification results to the two heteroresistance classifications: Mu3-like and  
 243 CoNSB18-like detection, taking each separately as the gold standard. Etest accurately predicted the  
 244 heteroresistance status of 60% and 62% of the isolates in the training set as respectively classified by  
 245 Mu3-like and CoNSB18-like detection. The corresponding sensitivities of Etest were 75% and 79% and  
 246 the specificities were 26 and 33%, respectively. The results were robust across PAP replicas (Table 4).

247 Table 4: Comparing Etest classification to the classifications by CSP of Mu3 and of CoNSB18, taking  
 248 each separately as the gold standard.

Attribute	Mu3-like (training/verification), %/%	CoNSB18-like (training/verification), %/%
Accuracy	60/61	62/63
Sensitivity	75/73	79/79
Specificity	26/29	33/38

249

## 250 Discussion

251 In this study of heteroresistance detection among hospital 74 CoNS isolates we have shown that the initial  
 252 inoculum used in PAP-based heteroresistance detections in staphylococci statistically significantly  
 253 influences ( $p < 0.001$ ) the area under the PAP curve. This finding implies that the area under the PAP  
 254 curve is not adequate for evaluating the experience under the antibiotic gradient. We introduced the

255 cumulative survival under the antibiotic gradient as an alternative metric and a distribution of which must  
256 be estimated for reference strains. To infer the distribution of the cumulative survival for reference  
257 strains, we introduced the cumulative survival profiling (CSP) method which employs replicated PAPs of  
258 the reference with a wide range of initial inoculum values. For clinical isolates, that one aims to compare  
259 with reference strains, the cumulative survival can be estimated, simply, by dividing the area under the  
260 PAP curve by the initial inoculum. We applied the CSP method on two reference isolates Mu3  
261 (heteroresistant) and CoNSB18 which is detected to be heteroresistant in comparison with Mu3 and is  
262 associated with poor clinical response. Using these two reference strains, we estimated that about two-  
263 thirds of our first-episode CoNS-CLABSI isolates are heteroresistant to vancomycin and that 80% of the  
264 heteroresistant isolates may be associated with a poor clinical response. These estimates raise the profile  
265 of heteroresistance to vancomycin as a risk factor for poor clinical response in CoNS-CLABSI isolated  
266 from the pediatric leukemia population.

#### 267 Comparison with other studies

268 Our estimate of the heteroresistance prevalence in CoNS under vancomycine is consistent with the 68%  
269 prevalence of heteroresistance among MRSA CoNS [5] and with the 62.5% prevalence estimate among  
270 MRSA *S. captis* from blood samples in neonatal intensive care units (NICUs) [8] and within the range  
271 reported among CoNS in NICUs [7] but it is higher than what we estimated for the same data using the  
272 semi-Wotton's method [24] because the latter revealed heteroresistance 46% of the time compared to  
273 82% of the time using the CSP method.

#### 274 Strength and limitations of this study

275 The inferred cumulative survival distributions of Mu3 and of CoNSB18 under vancomycin reveal the  
276 wide spectrum of heteroresistance and that a single PAP would not be sufficient to capture. Further, the  
277 finding that a larger cumulative survival threshold (median compared to 2.5% quantile of the CSP of  
278 Mu3) was needed to successfully detect heteroresistance associated with a poor clinical response than that  
279 needed to detect heteroresistance regardless to association with clinical outcomes shows that only the  
280 most-resistant CoNS isolates (those with relatively higher cumulative survival above the median CSP  
281 distribution of Mu3) may be associated with poor clinical response.

282 The CSP method offers asynchronous profiling of Mu3 and prospective isolates, whereby an experimental  
283 setup is used to first conduct PAPs for Mu3 and build its cumulative survival profile. The detection  
284 accuracy of heteroresistance by the Mu3 profile is then examined via cross-validation over the Mu3  
285 PAPs. More Mu3 PAPs can be added overtime to this profiling provided following the same experimental  
286 setup in preparation and the re-examination of the detection accuracy. The exact same experimental setup  
287 is then used to conduct PAPs for isolates as they come forward and the most up-to-date Mu3 profile is

288 used to detect heteroresistance in each. Thus, this method alleviates the need for profiling clinical isolates  
289 simultaneously with the reference strains and could pave the way to standardization of the detection of  
290 heteroresistance.

291 Along these lines, the asynchronous profiling must not mean different experimental procedures are used  
292 for the reference and isolates' PAPs. Any differences should be investigated and reported. In this regard,  
293 the CSP method explicitly controls for the variation in the initial inoculum and only the random  
294 experimental errors occurring within the same experimental procedure.

295 Also, the CSP method makes it feasible to detect strains that are not only heteroresistant but also  
296 associated with poor clinical response by profiling an isolate that is known to be associated with poor  
297 clinical response provided it is found to be heteroresistant in comparison with Mu3 profile. This isolate  
298 then can be used as a reference to detect similar isolates.

299 By including cross-validation, the CSP method ensures the reliability of reference-like detection in new  
300 clinical isolates. The cross-validation of the CSP method reveals a false-negative rate of <20%. Although  
301 this false-negative rate might never be zero for Mu3 given that some PAPs of Mu3 inherently reflect  
302 susceptibility to vancomycin (which again argues against using single Mu3 PAPs for detecting  
303 heteroresistance), using more PAPs for the reference would decrease this rate.

304 Our CSP profiles shown in this study are specific to the vancomycin gradient and might be specific to the  
305 experimental preparation that was followed for PAPs and should not be directly applicable to other  
306 antibiotics, different vancomycin gradients, or different experimental preparations. Apart from Mu3, we  
307 have not tested our method on *S. aureus* isolates, and the samples of CoNS used might not represent other  
308 populations. Using different methods, it has been observed that prevalence of hVISA could vary among  
309 populations [27]. This variability suggests that an adequate reference isolate is always needed to  
310 predict/confirm association with clinical outcomes of prospective isolates.

311 Therefore, we are making the method publicly available at (<https://github.com/stjude/CSP>) so that other  
312 investigators may test it on their isolates prospectively or retrospectively.

313 Although the most robust estimate for the cumulative survival would require profiling each clinical isolate  
314 by applying CSP using multiple PAPs of the isolate, in case of multiple clinical isolates, a single PAP for  
315 each might be enough. However, this supposition warrants further testing. We showed robustness of  
316 classification results to replicated PAPs of isolates.

317 The comparison of detection results of Etest to CSP-detection of CoNSB18 indicate a relatively low false-  
318 negative rate of 20%, suggesting that Etest might be used first on CoNS to detect hVISA-like

319 heteroresistance associated with poor clinical response, with an understanding of the limitation of this  
320 false-negative rate.

### 321 Conclusions and clinical implications

322 In summary, the initial inoculum used in PAP-based heteroresistance detections in staphylococci strongly  
323 influences the area under the PAP curve and should not be part of evaluating the experience of isolates  
324 under the antibiotic gradient. We suggest using the cumulative survival instead. The cumulative survival  
325 profiling of Mu3 using multiple PAPs reveals a spectrum for the experience of Mu3 under vancomycin  
326 gradient indicating that robust determination of heteroresistance in clinical isolates using Mu3 cannot be  
327 adequately captured by a single Mu3 PAP.

### 328 Acknowledgment

329 We thank Elaine Tuomanen for discussion and encouragement. We thank Cherise Guess, PhD ELS for  
330 scientifically editing the manuscript.

### 331 Funding

332 EM receives funding from ALSAC. JWR is supported by 1U01AI124302 and 1R01AI110618.

### 333 References

- 334 1. El-Halfawy OM, Valvano MA. Antimicrobial Heteroresistance: an Emerging Field in Need of Clarity.  
335 *Clin Microbiol Rev.* 2015;28:191–207.
- 336 2. Andersson DI, Nicoloff H, Hjort K. Mechanisms and clinical relevance of bacterial heteroresistance.  
337 *Nat Rev Microbiol.* 2019;17:479–96.
- 338 3. Hiramatsu K, Hanaki H, Ino T, Yabuta K, Oguri T, Tenover FC. Methicillin-resistant *Staphylococcus*  
339 *aureus* clinical strain with reduced vancomycin susceptibility. *J Antimicrob Chemother.* 1997;40:135–6.
- 340 4. Becker K, Heilmann C, Peters G. Coagulase-Negative Staphylococci. *Clinical Microbiology Reviews.*  
341 2014;27:870–926.
- 342 5. Sieradzki K, Villari P, Tomasz A. Decreased Susceptibilities to Teicoplanin and Vancomycin among  
343 Coagulase-Negative Methicillin-Resistant Clinical Isolates of Staphylococci. *Antimicrobial Agents and*  
344 *Chemotherapy.* 1998;42:100–7.
- 345 6. Nunes APF, Teixeira LM, Iorio NLP, Bastos CCR, de Sousa Fonseca L, Souto-Pradón T, et al.  
346 Heterogeneous resistance to vancomycin in *Staphylococcus epidermidis*, *Staphylococcus haemolyticus*  
347 and *Staphylococcus warneri* clinical strains: characterisation of glycopeptide susceptibility profiles and  
348 cell wall thickening. *Int J Antimicrob Agents.* 2006;27:307–15.
- 349 7. Chong J, Caya C, Lévesque S, Quach C. Heteroresistant Vancomycin Intermediate Coagulase Negative  
350 *Staphylococcus* in the NICU: A Systematic Review. *PLOS ONE.* 2016;11:e0164136.

- 351 8. Rasigade J-P, Raulin O, Picaud J-C, Tellini C, Bes M, Grando J, et al. Methicillin-resistant  
352 *Staphylococcus capitis* with reduced vancomycin susceptibility causes late-onset sepsis in intensive care  
353 neonates. *PLoS ONE*. 2012;7:e31548.
- 354 9. Van Der Zwet WC, Debets-Ossenkopp YJ, Reinders E, Kapi M, Savelkoul PHM, Van Elburg RM, et  
355 al. Nosocomial spread of a *Staphylococcus capitis* strain with heteroresistance to vancomycin in a  
356 neonatal intensive care unit. *J Clin Microbiol*. 2002;40:2520–5.
- 357 10. D’mello D, Daley AJ, Rahman MS, Qu Y, Garland S, Pearce C, et al. Vancomycin heteroresistance in  
358 bloodstream isolates of *Staphylococcus capitis*. *J Clin Microbiol*. 2008;46:3124–6.
- 359 11. Antimicrobial and Antifungal Susceptibility Testing Resources. Clinical & Laboratory Standards  
360 Institute. [https://clsi.org/about/about-clsi/about-clsi-antimicrobial-and-antifungal-susceptibility-testing-](https://clsi.org/about/about-clsi/about-clsi-antimicrobial-and-antifungal-susceptibility-testing-resources/)  
361 [resources/](https://clsi.org/about/about-clsi/about-clsi-antimicrobial-and-antifungal-susceptibility-testing-resources/). Accessed 2 Jul 2019.
- 362 12. Satola SW, Farley MM, Anderson KF, Patel JB. Comparison of Detection Methods for  
363 Heteroresistant Vancomycin-Intermediate *Staphylococcus aureus*, with the Population Analysis Profile  
364 Method as the Reference Method. *Journal of Clinical Microbiology*. 2011;49:177–83.
- 365 13. Hal SJ van, Wehrhahn MC, Barbagiannakos T, Mercer J, Chen D, Paterson DL, et al. Performance of  
366 various testing methodologies for detection of heteroresistant vancomycin intermediate *Staphylococcus*  
367 *aureus* (hVISA) in bloodstream isolates. *Journal of Clinical Microbiology*. 2011.  
368 doi:10.1128/JCM.02302-10.
- 369 14. Walsh TR, Bolmström A, Qwärnström A, Ho P, Wootton M, Howe RA, et al. Evaluation of Current  
370 Methods for Detection of Staphylococci with Reduced Susceptibility to Glycopeptides. *Journal of*  
371 *Clinical Microbiology*. 2001;39:2439–44.
- 372 15. Wootton M, MacGowan AP, Walsh TR, Howe RA. A Multicenter Study Evaluating the Current  
373 Strategies for Isolating *Staphylococcus aureus* Strains with Reduced Susceptibility to Glycopeptides.  
374 *Journal of Clinical Microbiology*. 2007;45:329–32.
- 375 16. Wootton M, Howe RA, Hillman R, Walsh TR, Bennett PM, MacGowan AP. A modified population  
376 analysis profile (PAP) method to detect hetero-resistance to vancomycin in *Staphylococcus aureus* in a  
377 UK hospital. *J Antimicrob Chemother*. 2001;47:399–403.
- 378 17. Walsh TR, Bolmström A, Qwärnström A, Ho P, Wootton M, Howe RA, et al. Evaluation of Current  
379 Methods for Detection of Staphylococci with Reduced Susceptibility to Glycopeptides. *Journal of*  
380 *Clinical Microbiology*. 2001;39:2439–44.
- 381 18. Bhateja P, Purnapatre K, Dube S, Fatma T, Rattan A. Characterisation of laboratory-generated  
382 vancomycin intermediate resistant *Staphylococcus aureus* strains. *International Journal of Antimicrobial*  
383 *Agents*. 2006;27:201–11.
- 384 19. da Costa TM, Morgado PGM, Cavalcante FS, Damasco AP, Nouér SA, Dos Santos KRN. Clinical  
385 and Microbiological Characteristics of Heteroresistant and Vancomycin-Intermediate *Staphylococcus*  
386 *aureus* from Bloodstream Infections in a Brazilian Teaching Hospital. *PLoS ONE*. 2016;11:e0160506.
- 387 20. Harigaya Y, Ngo D, Lesse AJ, Huang V, Tsuji BT. Characterization of heterogeneous vancomycin-  
388 intermediate resistance, MIC and accessory gene regulator (*agr*) dysfunction among clinical bloodstream  
389 isolates of *staphylococcus aureus*. *BMC Infectious Diseases*. 2011;11. doi:10.1186/1471-2334-11-287.

- 390 21. Khosrovaneh A, Riederer K, Saeed S, Tabriz MS, Shah AR, Hanna MM, et al. Frequency of reduced  
391 vancomycin susceptibility and heterogeneous subpopulation in persistent or recurrent methicillin-resistant  
392 *Staphylococcus aureus* bacteremia. *Clin Infect Dis*. 2004;38:1328–30.
- 393 22. Passalacqua KD, Satola SW, Crispell EK, Read TD. A Mutation in the PP2C Phosphatase Gene in a  
394 *Staphylococcus aureus* USA300 Clinical Isolate with Reduced Susceptibility to Vancomycin and  
395 Daptomycin. *Antimicrob Agents Chemother*. 2012;56:5212–23.
- 396 23. Silveira AC de O, da Cunha GR, Caierão J, de Cordova CMM, d’Azevedo PA. Molecular  
397 epidemiology of heteroresistant vancomycin-intermediate *Staphylococcus aureus* in Brazil. *The Brazilian*  
398 *Journal of Infectious Diseases*. 2015;19:466–72.
- 399 24. Dao TH, Alsallaq R, Parsons JB, Ferrolino J, Hayden RT, Rubnitz JE, et al. Vancomycin  
400 Heteroresistance and Clinical Outcomes in Bloodstream Infections Caused by Coagulase-Negative  
401 *Staphylococci*. *Antimicrobial Agents and Chemotherapy*. 2020;64. doi:10.1128/AAC.00944-20.
- 402 25. Wootton M, MacGowan AP, Walsh TR, Howe RA. A Multicenter Study Evaluating the Current  
403 Strategies for Isolating *Staphylococcus aureus* Strains with Reduced Susceptibility to Glycopeptides.  
404 *Journal of Clinical Microbiology*. 2007;45:329–32.
- 405 26. Satola SW, Farley MM, Anderson KF, Patel JB. Comparison of Detection Methods for  
406 Heteroresistant Vancomycin-Intermediate *Staphylococcus aureus*, with the Population Analysis Profile  
407 Method as the Reference Method. *Journal of Clinical Microbiology*. 2011;49:177–83.
- 408 27. Bae I-G, Federspiel JJ, Miró JM, Woods CW, Park L, Rybak MJ, et al. Heterogeneous vancomycin-  
409 intermediate susceptibility phenotype in bloodstream methicillin-resistant *Staphylococcus aureus* isolates  
410 from an international cohort of patients with infective endocarditis: prevalence, genotype, and clinical  
411 significance. *J Infect Dis*. 2009;200:1355–66.
- 412 28. Rybak MJ, Leonard SN, Rossi KL, Cheung CM, Sadar HS, Jones RN. Characterization of  
413 Vancomycin-Heteroresistant *Staphylococcus aureus* from the Metropolitan Area of Detroit, Michigan,  
414 over a 22-Year Period (1986 to 2007). *J Clin Microbiol*. 2008;46:2950–4.
- 415 29. Hal SJ van, Jones M, Gosbell IB, Paterson DL. Vancomycin Heteroresistance Is Associated with  
416 Reduced Mortality in ST239 Methicillin-Resistant *Staphylococcus aureus* Blood Stream Infections. *PLOS*  
417 *ONE*. 2011;6:e21217.
- 418