

1 **Title:** IgG antibody responses are preferential compared to IgM for use as
2 serological markers for detecting recent exposure to *Plasmodium vivax* infection

3 **Running head:** IgM-based serological markers for *P. vivax*

4

5 **Authors:** Rhea J Longley^{1,2}, Michael T White³, Jessica Brewster¹, Zoe SJ Liu^{1,2},
6 Caitlin Bourke^{1,2}, Eizo Takashima⁴, Matthias Harbers⁵, Wai-Hong Tham^{2,6}, Julie
7 Healer^{2,6}, Chetan E Chitnis⁷, Wuelton Monteiro^{8,9}, Marcus Lacerda¹⁰, Jetsumon
8 Sattabongkot¹¹, Takafumi Tsuboi⁴, Ivo Mueller^{1,2,3}

9

10 ¹ Population Health and Immunity Division, The Walter and Eliza Hall Institute of
11 Medical Research, Parkville 3052, Australia

12 ² Department of Medical Biology, University of Melbourne, Parkville 3052, Australia

13 ³ Malaria Parasites and Hosts Unit, Department of Parasites and Insect Vectors,
14 Institut Pasteur, Paris, France

15 ⁴ Division of Malaria Research, Proteo-Science Center, Ehime University,
16 Matsuyama, Japan

17 ⁵ CellFree Sciences Co., Ltd., RIKEN Center for Integrative Medical Sciences,
18 Yokohama, Japan

19 ⁶ Infection and Immunity Division, The Walter and Eliza Hall Institute of Medical
20 Research, Parkville 3052, Australia

21 ⁷ Malaria Parasite Biology and Vaccines, Department of Parasites and Insect
22 Vectors, Institut Pasteur, Paris, France

23 ⁸ Fundação de Medicina Tropical Dr. Heitor Vieira Dourado, Manaus, Brazil

24 ⁹ Universidade do Estado do Amazonas, Manaus, Brazil

25 ¹⁰ Instituto Leônicas & Maria Deane (Fiocruz), Manaus, Brazil

26 ¹¹ Mahidol Vivax Research Unit, Faculty of Tropical Medicine, Mahidol University,
27 Bangkok 10400, Thailand

28 **NOTE:** This preprint reports new research that has not been certified by peer review and should not be used to guide clinical practice.

29 **Corresponding author:** Ivo Mueller, mueller@wehi.edu.au, +61 3 9345 2936

30 **Word counts:** Abstract 100, Text 1973

31 **Footnotes:**

32 (1) RJL, MW, TT and IM are inventors on patent PCT/US17/67926 on a system,
33 method, apparatus and diagnostic test for *Plasmodium vivax*. No other
34 authors declare a conflict of interest.

35 (2) This work was supported by the National Health and Medical Research
36 Council Australia (#1092789, #1134989 and #1043345 to IM and #1143187
37 to W-HT), the National Institute of Allergy and Infectious Diseases (NIH grant
38 5R01 AI 104822 to JS) and the Global Health Innovative Technology Fund
39 (T2015-142 to IM). The Brazilian team was partly funded by Fundação de
40 Amparo à Pesquisa do Estado do Amazonas-FAPEAM (PAPAC 005/2019
41 and Pró-Estado). ML and WM are research fellows from CNPq. Additional
42 funding directly supporting field studies was from the TransEPI consortium
43 (supported by the Bill and Melinda Gates Foundation). We also acknowledge
44 support from the National Research Council of Thailand. This work was made
45 possible through Victorian State Government Operational Infrastructure
46 Support and Australian Government NHMRC IRIISS.

47 (3) Part of this work was presented by RJL at the 47th Annual Scientific Meeting
48 of the Australasian Society for Immunology, December 2018, Perth, Australia.

49 (4) Correspondence and requests for reprints should be addressed to Professor
50 Ivo Mueller, The Walter and Eliza Hall Institute of Medical Research, 1G
51 Royal Parade, Parkville 3052, Victoria, Australia, mueller@wehi.edu.au, +61
52 3 9345 2936.

53

54 **Abstract:**

55 To achieve malaria elimination, new tools are required to explicitly target
56 *Plasmodium vivax*. Recently, a novel panel of *P. vivax* proteins were identified and
57 validated as serological markers for detecting recent exposure to *P. vivax* within the
58 last 9 months. In order to improve the sensitivity and specificity of these markers, IgM
59 in addition to IgG antibody responses were assessed to a down-selected panel of 20
60 *P. vivax* proteins. IgM was tested using archival plasma samples from observational
61 cohort studies conducted in malaria-endemic regions of Thailand and Brazil. IgM
62 responses to these proteins generally had poorer classification performance than
63 IgG.

64

65 **Keywords:** IgG, IgM, serology, surveillance, malaria, *Plasmodium vivax*, serological
66 exposure markers, antibody

67 **TEXT**

68 **Background:**

69 Infections due to *Plasmodium vivax* are a major challenge for malaria elimination.
70 This is due to unique biological features of *P. vivax* parasites, including an arrested
71 stage in the liver (hypnozoites) that can reactivate weeks to months later causing
72 relapses of clinical disease. Individuals with hypnozoites are major reservoirs of
73 transmission, and are responsible for over 80% of blood-stage *P. vivax* infections [1].
74 Another challenge is the high proportion of low-density, asymptomatic blood-stage
75 infections due to *P. vivax* [2], particularly in low-transmission regions. These factors
76 make it difficult to identify not only infected individuals but also delineate pockets of
77 ongoing, local transmission. It is therefore critical that novel tools are developed that
78 enable efficient identification of at-risk individuals that should be targeted for malaria
79 interventions.

80

81 We have recently identified and validated a novel panel of *P. vivax* proteins that
82 induce IgG antibody responses reflective of recent exposure to *P. vivax* blood-stage
83 infections [3]. Combinations of IgG antibody responses to 5-8 *P. vivax* proteins can
84 accurately classify (with 80% sensitivity and specificity) whether an individual has
85 had a *P. vivax* infection within the last 9 months. We chose this 9-month time frame
86 as individuals who have had a detectable blood-stage infection in this period, and
87 have not been treated with anti-liver-stage drugs, are likely to be harbouring
88 hypnozoites in their livers. Our novel serological exposure markers therefore
89 represent the first test that can, indirectly, identify hypnozoite carriers. This tool could
90 play an important role in malaria elimination by offering an alternative to mass drug
91 administration strategies (MDA, where everyone is treated), or mass screening and
92 treatment (MSAT) strategies performed using currently available diagnostics for
93 blood-stage parasites. Whilst effective, MDA results in a high level of overtreatment.
94 Conversely, MSAT is ineffective using currently available technologies [4]. We have

95 proposed an alternative strategy termed “serological testing and treatment”, whereby
96 individuals are tested using our serological exposure markers and treatment given to
97 those exposed during the past 9 months.

98

99 Here, we investigate the potential utility of alternative biomarkers to IgG antibody
100 responses as serological exposure markers. We previously observed that IgG
101 responses to different *P. vivax* proteins were highly correlated [3], and this is likely
102 why we were unable to improve the classification accuracy by simply incorporating
103 responses to more antigens into the algorithm. IgM antibody responses to the same
104 *P. vivax* protein are only weakly correlated to IgG [5] and are generally thought to
105 have a different response kinetic (as shown against *P. falciparum* malaria [6] and
106 other infectious diseases such as West Nile virus [7]). We thus hypothesized that IgM
107 antibody responses to our panel of *P. vivax* proteins could be used to improve the
108 classification accuracy by providing additional information into the algorithm.

109

110 **Methods:**

111 We tested our hypothesis using samples from two observational cohort studies
112 conducted over 2013-2014: one in the Kanchanaburi and Ratchaburi provinces of
113 western Thailand [8] and one in Manaus in the Brazilian Amazon [3]. We utilized
114 plasma samples available from the last visits of these cohorts (n = 829 Thailand, n =
115 925 Brazil), as previously described [3]. After enrolment individuals were sampled
116 every month over the yearlong cohort, with 13-14 active case detection visits
117 performed (with PCR-based detection of malaria infections). This enabled us to
118 relate IgM (or IgG) antibody levels measured at the last visit with time since previous
119 detected *P. vivax* infection. All individuals provided informed consent or assent, and
120 the studies were approved locally by the Ethics Committee of the Faculty of Tropical
121 Medicine, Mahidol University, Thailand (MUTM 2013-027-01), and the Brazilian
122 National Committee of Ethics (CONEP) (349.211/2013). We also utilized three

123 panels of malaria-naïve control plasma samples as previously described [9]: 102
124 samples from the Volunteer Blood Donor Registry (VBDR), Melbourne, Australia, 100
125 samples from the Australian Red Cross (ARC), Melbourne, Australia and 72 samples
126 from the Thai Red Cross (TRC), Bangkok, Thailand. The Human Research Ethics
127 Committee at WEHI approved usage of all samples at WEHI, and collection of the
128 malaria-naïve control samples (#14/02).

129

130 IgM antibody responses were measured against a panel of 18 or 20 *P. vivax* proteins
131 in samples from the Thai or Brazilian cohorts, respectively (see Table S1 for full list
132 of proteins, expression and purification method, sequence region). These proteins
133 were selected as they were the best performing when using IgG responses in the
134 first iteration of our algorithm [9]. The *P. vivax* proteins were coupled to non-magnetic
135 COOH microspheres as previously described [10], and IgM levels measured using a
136 modified multiplexed Luminex® assay [9]. Modifications were plasma samples
137 diluted to 1/200 (instead of 1/100 for IgG), and use of the secondary donkey F(ab')₂
138 anti-human IgM Fc₅, Jackson ImmunoResearch Laboratories, Inc., at 1/400 dilution.
139 Median fluorescent intensity (MFI) values from the Luminex®-200 were converted to
140 relative antibody units based on a standard curve run on each plate generated from a
141 positive control plasma pool consisting of highly immune adults from Papua New
142 Guinea [10]. Data for KMZ83376.1 and PVX_095055 were not tested/analysed for the
143 Thai cohort due to inconsistent standard curves. IgG antibody responses against the
144 same *P. vivax* proteins had previously been measured in all samples as described
145 [3].

146

147 Individuals from the malaria-endemic cohorts were defined as either i) infected with
148 *P. vivax* within the last 9 months prior to antibody measurements or ii) not infected
149 with *P. vivax* within the last 9 months. Individuals from the malaria-naïve control
150 panels were defined in the latter group. Single antigen and two-antigen linear

151 discriminant analysis (LDA) classifications were performed in R studio using R
152 version 3.5.3 [11] and the packages MASS [12] and ROCR [13].

153

154 **Results:**

155 We first determined the accuracy for classifying individuals in the Thai and Brazilian
156 cohorts as recently infected within the last 9 months using IgM antibody responses
157 against 18 or 20 *P. vivax* proteins (Figure 1), respectively. Overall, we observed
158 lower levels of classification accuracy with IgM to these proteins as compared to
159 using IgG [3], as shown in Figure 1 by reference to the top performing serological
160 exposure marker for IgG (RBP2b). The area under the curve (AUC) values for IgM
161 ranged from 0.55 – 0.77 for the Thai cohort and 0.50 – 0.72 for the Brazilian cohort
162 (Table 1). In comparison, the AUC values for IgG for the same proteins ranged from
163 0.70 – 0.85 for the Thai cohort and 0.65 – 0.82 for the Brazilian cohort (Table S2)
164 (note these AUC values are different to that in our prior publication [3] as the current
165 analysis was performed with negative controls from Melbourne and Bangkok only,
166 not including newer samples from Rio de Janeiro). For IgM, the top performing *P.*
167 *vivax* protein in both cohorts was PVX_087885B, annotated as the rhoptry-
168 associated membrane antigen (RAMA, putative). One other protein PVX_082735
169 (thrombospondin-related anonymous protein, TRAP) performed well with IgM in both
170 the Thai and Brazilian cohorts with AUC values of 0.74 and 0.71, respectively. In the
171 Thai cohort, the protein PVX_082670 (merozoite surface protein 7 putative, MSP7)
172 also performed reasonably well for IgM (AUC 0.75). The AUC for IgM responses
173 against RBP2b (top performing marker for IgG) were much lower at 0.63 and 0.56.
174 IgM antibody responses, stratified by time since previous detected *P. vivax* infection
175 by PCR, are shown in Figures S1 and S2.

176

177 As IgM responses are expected to decay more quickly than IgG (due to a shorter
178 serum half-life and their characterization as an early response to infection), we

179 hypothesized that IgM responses may be better markers of very recent exposure.
180 We therefore tested the ability of IgM antibody responses to our 18-20 *P. vivax*
181 proteins to classify individuals as infected with *P. vivax* within the prior 6, 3 or 1-
182 month period. As shown in Table 1, for both cohorts, the AUC values did improve
183 when using a shorter time frame for classification. However, the same proteins
184 consistently performed well (PVX_087885, PVX_082735 and PVX_082670) with all
185 classification time frames tested, and the overall improvements were marginal.
186 Furthermore, classification performance with IgM antibodies was still inferior to
187 classification with RBP2b IgG.

188

189 Our original results had shown that IgG antibody responses to combinations of
190 proteins were better at classifying individuals as infected within the last 9 months
191 compared to individual proteins alone. We therefore tested the classification ability,
192 using the 9 month time frame, of each IgM antibody response combined with IgG
193 responses against the top protein RBP2b. Each of the two-antigen combinations (1
194 IgM with RBP2b IgG) had better classification accuracy than the IgM response alone,
195 as determined by AUC values (Table 1). In the Thai cohort, all IgM + RBP2b IgG
196 performed (slightly) better than RBP2b IgG alone, with the exception of two proteins
197 (PVX_112670 and PVX_110810A). In the Brazilian cohort, all IgM + RBP2b IgG
198 performed (slightly) better than RBP2b IgG alone, with the exception of
199 PVX_110810A. The best combination was PVX_087885 IgM + RBP2b IgG (AUC
200 0.88) for Thailand and PVX_082735 IgM + RBP2b IgG (AUC 0.85) for Brazil.

201

202 **Discussion:**

203 Serological markers of recent exposure to *P. vivax* infections could play an important
204 role in malaria elimination by delineating areas of ongoing transmission and
205 identifying individuals with a high chance of carrying hypnozoites in their livers. In this
206 study we aimed to improve upon an existing set of serological exposure markers by

207 incorporating IgM, in addition to IgG, responses against these proteins. We
208 demonstrate that two proteins in particular, PVX_087885 (RAMA) and PVX_082735
209 (TRAP), induce IgM responses reflective of recent exposure to *P. vivax* within the
210 past 9 months in endemic regions of Thailand and Brazil. They have similar accuracy
211 as compared to these same antigens using IgG (RAMA performs slightly better with
212 IgG, TRAP performs slightly better with IgM). However, the accuracy of these
213 classifications overall is poorer than for the top performing serological marker
214 (RBP2b) when using IgG, and generally the IgM AUC values for each antigen were
215 lower than the corresponding IgG AUC values (Table S2). The poorer performance
216 of IgM responses against these proteins than IgG likely relates to the acquisition and
217 maintenance of IgM antibody responses following *P. vivax* infections. IgM is
218 expected to be short-lived following infection, and supporting this we find the
219 classification accuracy does improve if we define recent exposure within a shorter
220 time frame (i.e. 1-6 months rather than 9). Another contributing factor is likely the
221 high background in the non-malaria exposed controls for IgM (Figure S1 and S2),
222 compared to our previous results for IgG [3].

223

224 When we combined each of the IgM responses against the 18-20 *P. vivax* proteins
225 tested with the IgG response against RBP2b we demonstrated a clear improvement
226 in classification performance compared to the single-antigen IgM response alone.
227 However, there was only a slight improvement compared to the single-antigen
228 RBP2b IgG alone, signifying that incorporation of IgM responses into the
229 classification algorithm is unlikely to result in substantial improvements in
230 classification. A limitation of our research is that we did not exhaustively test all
231 combinations of IgG and IgM against the down-selected panel of 18-20 *P. vivax*
232 proteins. We also only measured IgM responses against 18-20 of the top *P. vivax*
233 proteins as indicated by their classification performance when using IgG responses;
234 an alternate approach would have been to measure IgM responses to the full panel

235 of 60 proteins. However, we have already demonstrated that incorporating more than
236 5 IgG responses results in only marginal improvements in classification performance
237 compared to RBP2b IgG alone, and thus this approach (of exhausting all options) is
238 unlikely to yield better results.

239

240 Finally, we ultimately aim to develop a point-of-contact test to be used in the field. It
241 would be a more complicated and costly test if both IgG and IgM responses were
242 required to be measured. We will therefore not be pursuing IgM responses in our
243 optimization of our novel panel of serological exposure markers, and will instead
244 focus on other avenues for improved performance of signals we can obtain from the
245 IgG responses.

246

247 **Funding:**

248 This work was supported by the National Health and Medical Research Council
249 Australia (#1092789, #1134989 and #1043345 to IM and #1143187 to W-HT), the
250 National Institute of Allergy and Infectious Diseases (NIH grant 5R01 AI 104822 to
251 JS) and the Global Health Innovative Technology Fund (T2015-142 to IM). The
252 Brazilian team was partly funded by Fundação de Amparo à Pesquisa do Estado do
253 Amazonas-FAPEAM (PAPAC 005/2019 and Pró-Estado). ML and WM are research
254 fellows from CNPq. Additional funding directly supporting field studies was from the
255 TranEPI consortium (supported by the Bill and Melinda Gates Foundation). We also
256 acknowledge support from the National Research Council of Thailand. This work was
257 made possible through Victorian State Government Operational Infrastructure
258 Support and Australian Government NHMRC IRIISS. The Walter and Eliza Hall
259 Institute of Medical Research, through the Page Betheras Award to RJL, also
260 provided salary support. RJL is currently supported by an NHMRC Early Career
261 Investigator Fellowship (1173210). W.H.T. is a Howard Hughes Medical Institute-
262 Wellcome Trust International Research Scholar (208693/Z/17/Z).

263

264 **Acknowledgments:**

265 We gratefully acknowledge the extensive field teams that contributed to sample
266 collection and qPCR assays, including Wang Nguitragool, Andrea Kuehn, Yi Wan
267 Quah, Piyarat Sripoorote, and Andrea Waltmann. We thank all the individuals that
268 participated in each of the studies, and thank the Australian and Thai Red Cross for
269 donation of plasma samples. We thank the Volunteer Blood Donor Registry at WEHI
270 for donation of plasma samples, and Lina Laskos and Jenni Harris for their collection
271 and advice. We thank Christopher King (Case Western Reserve University) for
272 provision of the PNG control plasma pool. We thank Fumie Matsuura (CellFree
273 Sciences) and Christele Huon (Institut Pasteur) for contributing to expression of
274 proteins.

275

276 **Conflict of Interests:**

277 RJL, MW, TT and IM are inventors on patent PCT/US17/67926 on a system, method,
278 apparatus and diagnostic test for *Plasmodium vivax*. No other authors declare a
279 conflict of interest.

280

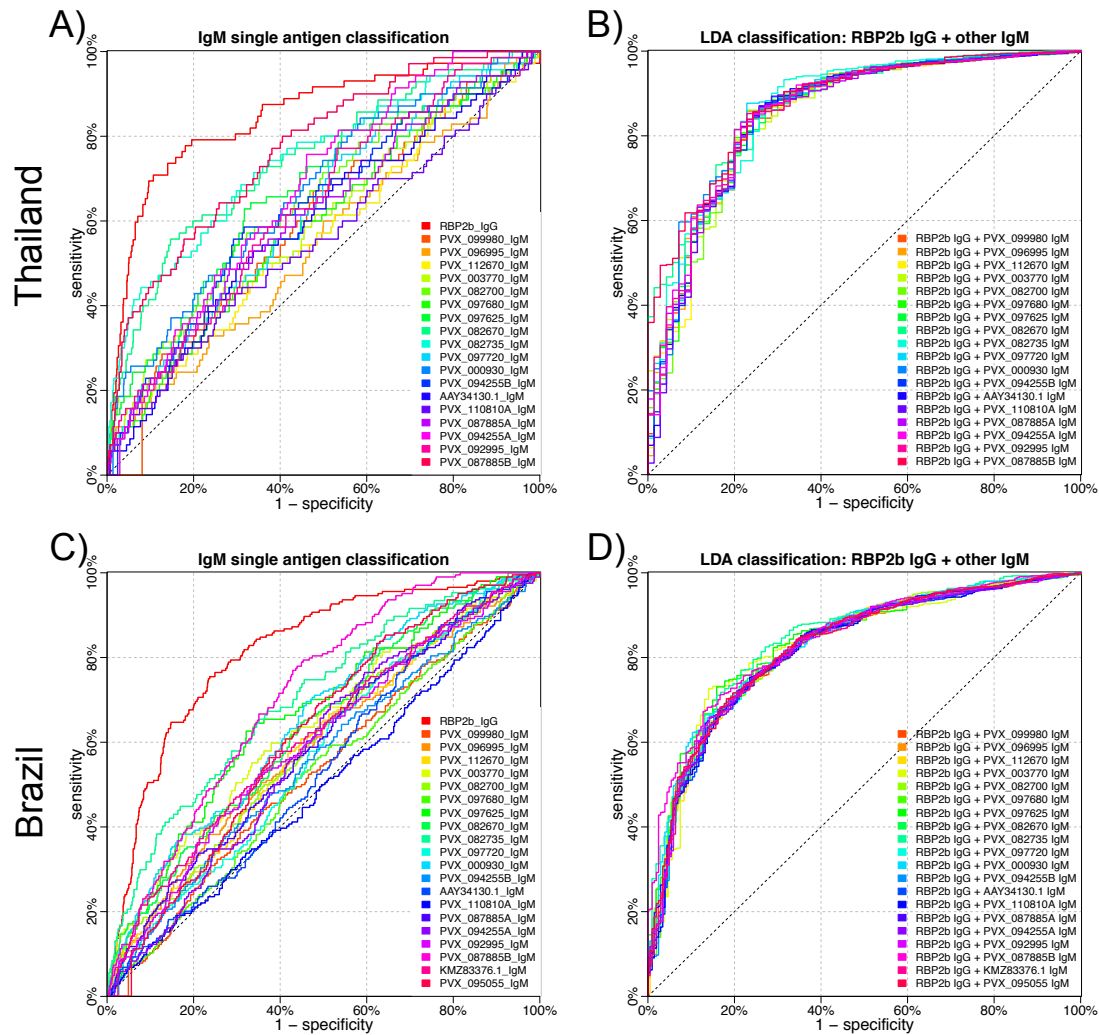
281 **References:**

- 282 1. Robinson LJ, Wampfler R, Betuela I, et al. Strategies for understanding and
283 reducing the *Plasmodium vivax* and *Plasmodium ovale* hypnozoite reservoir in
284 Papua New Guinean children: a randomised placebo-controlled trial and
285 mathematical model. *PLoS Med* **2015**; 12:e1001891.
- 286 2. Moreira CM, Abo-Shehada M, Price RN, Drakeley CJ. A systematic review of
287 sub-microscopic *Plasmodium vivax* infection. *Malar J* **2015**; 14:360.

- 288 3. Longley RJ, White MT, Takashima E, et al. Development and validation of
289 serological markers for detecting recent *Plasmodium vivax* infection. *Nature*
290 *medicine* **2020**; 26:741-9.
- 291 4. Sutanto I, Kosasih A, Elyazar IRF, et al. Negligible Impact of Mass Screening
292 and Treatment on Meso-endemic Malaria Transmission at West Timor in Eastern
293 Indonesia: A Cluster-Randomised Trial. *Clin Infect Dis* **2018**.
- 294 5. Richards JS, Stanistic DI, Fowkes FJ, et al. Association between naturally
295 acquired antibodies to erythrocyte-binding antigens of *Plasmodium falciparum*
296 and protection from malaria and high-density parasitemia. *Clin Infect Dis* **2010**;
297 51:e50-60.
- 298 6. Kinyanjui SM, Bull P, Newbold CI, Marsh K. Kinetics of Antibody Responses to
299 *Plasmodium falciparum*-Infected Erythrocyte Variant Surface Antigens. *The*
300 *Journal of Infectious Diseases* **2003**; 187:667-74.
- 301 7. Busch MP, Kleinman SH, Tobler LH, et al. Virus and Antibody Dynamics in
302 Acute West Nile Virus Infection. *The Journal of Infectious Diseases* **2008**;
303 198:984-93.
- 304 8. Nguitragool W, Karl S, White M, et al. Highly heterogeneous residual malaria
305 risk in western Thailand. *Int J Parasitol* **2019**.
- 306 9. Longley RJ, White MT, Takashima E, et al. Development and validation of
307 serological markers for detecting recent exposure to *Plasmodium*
308 *vivax* infection. *bioRxiv* **2018**:481168.
- 309 10. Longley RJ, Franca CT, White MT, et al. Asymptomatic *Plasmodium vivax*
310 infections induce robust IgG responses to multiple blood-stage proteins in a low-
311 transmission region of western Thailand. *Malar J* **2017**; 16:178.

- 312 11. Team RC. A language and environment for statistical computing. Vienna,
313 Austria: R Foundation for Statistical Computing, **2018**.
- 314 12. Venables WN. Modern applied statistics with S / W.N. Venables, B.D. Ripley.
315 New York: Springer, **2002** (Ripley BD, Venables WNMaswSP, eds. Statistics and
316 computing).
- 317 13. Sing T, Sander O, Beerenwinkel N, Lengauer T. ROCR: visualizing classifier
318 performance in R. *Bioinformatics* **2005**; 21:3940-1.
- 319
- 320

321 **Figures and Tables:**



322

323 Figure 1: Performance of IgM antibodies against 18-20 *P. vivax* proteins individually
 324 (A and C) and in combination with the top performing protein using IgG (B and D), for
 325 classification of *P. vivax* infections within the prior 9 months. In the Thai cohort, IgM
 326 antibody responses were measured against 18 *P. vivax* proteins. Panel A depicts the
 327 classification accuracy of these 18 proteins individually, and includes the top
 328 performing protein for IgG (RBP2b) as reference in red. Panel B depicts the results
 329 from a LDA combining RBP2b IgG with each of the IgM responses to the 18 proteins.
 330 In the Brazilian cohort, IgM antibody responses were measured against 20 *P. vivax*
 331 proteins. Panel A depicts the classification accuracy of these 20 proteins individually,
 332 and includes the top performing protein for IgG (RBP2b) as reference in red. Panel B

333 depicts the results from a LDA combining RBP2b IgG with each of the IgM responses
334 to the 20 proteins. AUC values are shown in Table 1.

335

336 Table 1: AUC values for classifying individuals as recently infected with *P. vivax*. LDA
337 (2 antigen combination) was performed using the 9 month classification period with
338 RBP2b IgG plus IgM to one of the listed antigens. NA = not applicable. NT = not
339 tested.

	Single antigen classification								LDA	
	1 month		3 months		6 months		9 months		9 months	
Protein	<i>Thai</i>	<i>Brazil</i>	<i>Thai</i>	<i>Brazil</i>	<i>Thai</i>	<i>Brazil</i>	<i>Thai</i>	<i>Brazil</i>	<i>Thai</i>	<i>Brazil</i>
RBP2b (IgG)	0.825	0.880	0.856	0.823	0.857	0.823	0.849	0.818	NA	NA
PVX_099980	0.621	0.516	0.601	0.517	0.606	0.529	0.607	0.537	0.855	0.822
PVX_096995	0.551	0.625	0.537	0.591	0.548	0.597	0.549	0.593	0.853	0.822
PVX_112670	0.595	0.590	0.579	0.600	0.585	0.594	0.567	0.589	0.848	0.823
PVX_003770	0.613	0.734	0.573	0.660	0.587	0.644	0.602	0.633	0.852	0.827
PVX_082700	0.665	0.570	0.653	0.613	0.662	0.602	0.641	0.596	0.849	0.828
PVX_097680	0.590	0.551	0.577	0.544	0.593	0.535	0.593	0.529	0.851	0.819
PVX_097625	0.664	0.680	0.647	0.663	0.655	0.655	0.671	0.665	0.856	0.835
PVX_082670	0.786	0.617	0.745	0.650	0.742	0.639	0.747	0.635	0.871	0.827
PVX_082735	0.786	0.774	0.766	0.730	0.758	0.716	0.743	0.705	0.863	0.845
PVX_097720	0.655	0.586	0.629	0.572	0.632	0.568	0.628	0.573	0.858	0.821
PVX_000930	0.709	0.614	0.686	0.634	0.688	0.649	0.673	0.654	0.863	0.835
PVX_094255B	0.628	0.577	0.617	0.545	0.626	0.562	0.631	0.560	0.851	0.819
AAV34130.1	0.622	0.518	0.618	0.519	0.617	0.541	0.597	0.540	0.851	0.819
PVX_110810A	0.580	0.505	0.581	0.475	0.585	0.493	0.554	0.496	0.847	0.818
PVX_087885A	0.628	0.636	0.611	0.602	0.625	0.591	0.615	0.591	0.851	0.823
PVX_094255A	0.673	0.534	0.669	0.555	0.676	0.570	0.675	0.581	0.856	0.821
PVX_092995	0.639	0.584	0.629	0.601	0.644	0.595	0.640	0.599	0.858	0.823
PVX_087885B	0.799	0.733	0.760	0.725	0.771	0.717	0.771	0.715	0.876	0.843

KMZ83376.1	NT	0.623	NT	0.594	NT	0.612	NT	0.617	NT	0.822
PVX_095055	NT	0.616	NT	0.607	NT	0.614	NT	0.624	NT	0.827

340