

## Genome-Wide Association Identifies the First Risk Loci for Psychosis in Alzheimer Disease

Mary Ann A. DeMichele-Sweet, Ph.D.<sup>a</sup>, Lambertus Klei, Ph.D.<sup>a</sup>, Byron Creese, Ph.D.,<sup>d</sup>, Elise A. Weamer, M.P.H.,<sup>b</sup>, Lora McClain, Ph.D.,<sup>a</sup>, Rebecca Sims, Ph.D.,<sup>e</sup>, Isabel Hernandez, M.D., Ph.D.,<sup>f,g</sup>, Sonia Moreno-Grau, Ph.D.,<sup>f,g</sup>, Lluís Tàrraga, M.S.,<sup>f,g</sup>, Mercè Boada, M.D., Ph.D.,<sup>f,g</sup>, Emilio Alarcón-Martín M.S.,<sup>f</sup>, Sergi Valero Ph.D.,<sup>f,g</sup>, NIA-LOAD Family Based Study Consortium,<sup>h</sup>, Alzheimer's Disease Genetics Consortium (ADGC)<sup>h</sup>, Yushi Liu, Ph.D.,<sup>i</sup>, Basavaraj Hooli, Ph.D.,<sup>j</sup>, Dag Aarsland, M.D.,<sup>k</sup>, Geir Selbaek, M.D.,<sup>l</sup>, Sverre Bergh, M.D.,<sup>m</sup>, Arvid Rongve, MD, PhD,<sup>n</sup>, Ingvild Saltvedt, M.D.,<sup>o</sup>, Håvard K. Skjellegrind, MD PhD,<sup>p</sup>, Bo Engdahl, Ph.D.,<sup>q</sup>, Eystein Stordal, MD,<sup>r</sup>, Ole A. Andreassen, MD PhD,<sup>ae</sup>, Srdjan Djurovic, PhD,<sup>s</sup>, Lavinia Athanasiu, PhD,<sup>t</sup>, Davide Seripa, PhD,<sup>u</sup>, Barbara Borroni, MD,<sup>v</sup>, Diego Albani, MSc,<sup>w</sup>, Gianluigi Forloni, PhD,<sup>w</sup>, Patrizia Meccoci, M.D.,<sup>x</sup>, Alessandro Serretti, MD,<sup>y</sup>, Diana De Ronchi, MD,<sup>y</sup>, Antonis Politis, MD,<sup>z</sup>, Giulia Paroni, PhD,<sup>u</sup>, AddNeuroMed Consortium,<sup>h</sup>, Julie Williams, Ph.D.,<sup>e,aa</sup>, Richard Mayeux, MD,<sup>ab</sup>, Tatiana Foroud, Ph.D.,<sup>ac</sup>, Agustin Ruiz, M.D., Ph.D.,<sup>f,g</sup>, Clive Ballard, M.D.,<sup>ad</sup>, Oscar L. Lopez, M.D.,<sup>a,b</sup>, M. Ilyas Kamboh, Ph.D.,<sup>c</sup>, Bernie Devlin, Ph.D.,<sup>a</sup>, \*Robert A. Sweet, M.D.,<sup>a,b</sup>

Departments of <sup>a</sup>Psychiatry, <sup>b</sup>Neurology, <sup>c</sup>Human Genetics, University of Pittsburgh, Pittsburgh, PA; <sup>d</sup>University of Exeter Medical School, College of Medicine and Health, Exeter, UK; Norwegian, Exeter and King's College Consortium for Genetics of Neuropsychiatric Symptoms in Dementia; <sup>e</sup>Division of Psychological Medicine and Clinical Neuroscience, School of Medicine, Cardiff University, Cardiff, UK; <sup>f</sup>Research Center and Memory Clinic Fundació ACE, Institut Català de Neurociències Aplicades. Universitat Internacional de Catalunya, Barcelona, Spain; <sup>g</sup>CIBERNED, Network Center for Biomedical Research in Neurodegenerative Diseases, National Institute of Health Carlos III, Spain; <sup>h</sup>See Supplementary Acknowledgments for the contributors and their affiliations; <sup>i</sup>Global Statistical Science, Lilly Research Laboratories, Eli Lilly and Company, Indianapolis, IN; <sup>j</sup>Neurodegeneration Research, Lilly Research Laboratories, Eli Lilly and Company, Indianapolis, IN; <sup>k</sup>Department of Old Age Psychiatry, Institute of Psychiatry,

Psychology and Neuroscience, King's College London and Centre for Age-Related Medicine, Stavanger University Hospital; <sup>l</sup>Norwegian National Advisory Unit in Ageing and Health, Vestfold Hospital Trust, Tønsberg, Norway and Department Geriatric Medicine, Oslo University Hospital, Oslo, Norway, and Faculty of Medicine, University of Oslo, Oslo, Norway; <sup>m</sup>Research Centre of Age-related Functional Decline and Disease, Innlandet Hospital Trust, Pb 68, Ottestad 2312, Norway; <sup>n</sup>Department of Research and Innovation, Helse Fonna, Haugesund and Department of Clinical Medicine (K1), University of Bergen, Bergen, Norway; <sup>o</sup>Geriatric Department, St. Olav Hospital, University Hospital of Trondheim, Norway and Department of Neuromedicine and Movement science, Norwegian University of Science and Technology (NTNU), Norway; <sup>p</sup>HUNT Research Centre, Department of Public Health and Nursing, Faculty of Medicine and Health Sciences, Norwegian University of Science and Technology (NTNU), Levanger, Norway; <sup>q</sup>Norwegian Institute of Public Health, Oslo, Norway; <sup>r</sup>Department of Mental Health, Norwegian University of Science and Technology, Trondheim, 43 Norway; <sup>s</sup>Department of Medical Genetics, Oslo University Hospital, Oslo, Norway and NORMENT, Department of Clinical Science, University of Bergen, Bergen, Norway; <sup>t</sup>NORMENT, Institute of Clinical Medicine, University of Oslo, Oslo, Norway; <sup>u</sup>Complex Structure of Geriatrics, Department of Medical Sciences, Fondazione IRCCS “Casa Sollievo della Sofferenza”, San Giovanni Rotondo (FG), Italy; <sup>v</sup>Centre for Neurodegenerative Disorders, Department of Clinical and Experimental Sciences, University of Brescia, Italy; <sup>w</sup>Neuroscience Department, Istituto di Ricerche Farmacologiche Mario Negri IRCCS, Milan, Italy; <sup>x</sup>Institute of Gerontology and Geriatrics, Department of Medicine and Surgery, University of Perugia, Italy; <sup>y</sup>Institute of Psychiatry, University of Bologna, Bologna, Italy; <sup>z</sup>1st Department of Psychiatry, Eginition Hospital, Medical School, National & Kapodistrian University of Athens, Athens, Greece; <sup>aa</sup>UK Dementia Research Institute @ Cardiff, School of Medicine, Cardiff University, Cardiff, UK; <sup>ab</sup>Departments of Neurology, Psychiatry and Epidemiology, Columbia University, New York, NY; <sup>ac</sup>Medical and Molecular Genetics, Indiana University School of Medicine, Indianapolis, IN; <sup>ad</sup>University of

Exeter Medical School, Exeter, UK; Norwegian, Exeter and King's College Consortium for Genetics of Neuropsychiatric Symptoms in Dementia; <sup>ae</sup>NORMENT Centre, Institute of Clinical Medicine, University of Oslo, and Oslo University Hospital, Oslo, Norway.

For questions and correspondence, please contact: \*Robert A. Sweet, M.D.

Mail: Biomedical Science Tower, Rm W-1645

3811 O'Hara Street, Pittsburgh, PA 15213-2593

Express Mail: Biomedical Science Tower, Rm W-1645

Lothrop and Terrace Streets, Pittsburgh, PA 15213-2593

Phone: 412-624-0064

Fax: 412-624-9910

Email: [sweetra@upmc.edu](mailto:sweetra@upmc.edu)

Web: [www.sweetlab.pitt.edu](http://www.sweetlab.pitt.edu)

Running Title: GWAS of Psychosis in Alzheimer Disease

## Abstract

Psychotic symptoms, defined as the occurrence of delusions or hallucinations, are frequent in Alzheimer disease (AD with psychosis, AD+P), affecting ~ 40% to 60% of individuals with AD. AD+P identifies a subgroup of AD patients with poor outcomes. The strongest clinical predictor of AD+P is a greater degree of cognitive impairment than in AD subjects without psychosis (AD-P). Other frequently replicated correlates of AD+P include elevated depressive symptoms. Although the estimated heritability of psychosis in AD is 61%, the underlying genetic sources of this risk are not known. We report a genome-wide meta-analysis of 12,317 AD subjects, with and without psychosis. Results showed common genetic variation accounted for a significant portion of heritability. Two loci, one in the gene *ENPP6* (best SNP rs9994623, O.R. (95%CI) 1.16 (1.10, 1.22),  $p=1.26 \times 10^{-8}$ ) and one spanning the 3'-UTR of an alternatively spliced transcript of *SUMF1* (best SNP rs201109606, O.R. 0.65 (0.56-0.76),  $p=3.24 \times 10^{-8}$ ), had genome-wide significant associations with the risk of psychosis in AD. Psychosis risk in AD demonstrated negative genetic correlations with cognitive and educational attainment and positive genetic correlation with depressive symptoms. We had previously observed a negative genetic correlation with schizophrenia, instead we now found a stronger negative correlation with the related phenotype of bipolar disorder. Psychosis risk in AD was not genetically correlated with AD or other neurodegenerative diseases. These findings provide the first unbiased identification of the association of psychosis in AD with common genetic variation and provide insights into its genetic architecture. Study of the genetic mechanisms underlying the associations of loci in *ENPP6* and *SUMF1* with psychosis in AD are warranted.

## Introduction

Psychotic symptoms, defined as the occurrence of delusions or hallucinations, constitute a phenotype within Alzheimer disease (AD+Psychosis, AD+P) that affects ~ 40% to 60% of individuals with AD and is associated with poor outcomes.<sup>1</sup> In comparison to AD subjects

without psychosis (AD-P), AD+P subjects have greater cognitive impairments and experience more rapid declines in cognition and function that begin prior to psychosis onset.<sup>2-9</sup> AD+P is also often associated with increased rates of concurrent neuropsychiatric symptoms, including agitation,<sup>10</sup> aggression,<sup>11,12</sup> and depression.<sup>5,13-15</sup> As a consequence, AD+P is associated with increased rates of other poor outcomes, including greater distress for family and caregivers,<sup>16</sup> higher institutionalization rates,<sup>17-20</sup> worse health,<sup>21</sup> and increased mortality<sup>22</sup> compared to AD-P patients.

The AD+P phenotype is well suited for genetic studies when careful attention is paid to excluding potential phenocopies of both AD+P and AD-P. For example, we have shown that the heritability of AD+P is greatest when requiring the presence of multiple or recurrent psychotic symptoms, rather than a one-time occurrence of a single symptom.<sup>23</sup> Similarly, because psychotic symptoms typically emerge in the transition from mild to moderate stages of AD,<sup>5</sup> individuals without psychosis who are still in the early stages of disease may later manifest psychosis, and therefore, need to be excluded from analysis. Using these approaches to phenotypic characterization, we have previously reported familial aggregation of AD+P,<sup>24</sup> which has since been replicated in two independent cohorts.<sup>5,25</sup> We further estimated the heritability of the presence or absence of psychosis in AD at 61%.<sup>23,26</sup>

Thus, AD+P is likely to be strongly influenced by genetic variation. To date, no study has identified genome-wide significant associations with AD+P, largely due to the small sample sizes of prior studies. However, in prior reports we identified negative genetic correlation of AD+P risk with risk for schizophrenia.<sup>27,28</sup> We now report a large genome-wide association meta-analysis of 12,317 AD subjects with and without psychosis. We identified two loci with genome-wide significant associations with AD+P, in *ENPP6* and *SUMF1*. AD+P was negatively genetically correlated with educational attainment and positively with depressive symptoms.

Surprisingly, AD+P was not significantly genetically correlated with schizophrenia, but it was negatively correlated with bipolar illness.

## **Materials and Methods**

### *Subjects*

This study analyzed samples from 12,317 subjects diagnosed with possible, probable,<sup>29</sup> and when available, autopsy-confirmed definite<sup>30</sup> Alzheimer disease (for subject characteristics see Table 1A). Diagnoses were made based on diagnostic evaluations, cognitive testing, and in some cases neuropathologic assessment, conducted during subjects' participation in the following eight source programs as previously described: the Fundació ACE Barcelona Alzheimer Treatment and Research Center (ACE/GR@ACE),<sup>31-33</sup> a Consortium of National Institute on Aging Alzheimer Disease Centers (ADC),<sup>34</sup> Eli Lilly and Company (LILLY),<sup>35,36</sup> the Norwegian, Exeter and King's College Consortium for Genetics of Neuropsychiatric Symptoms in Dementia (NEXGENS),<sup>37-42</sup> the National Institute on Aging's Late Onset Alzheimer's Disease Family Study (NIA-LOAD),<sup>5,26</sup> the National Institute of Mental Health Genetics Initiative AD Cohort (NIMH),<sup>24</sup> the University of Pittsburgh Alzheimer Disease Research Center (PITT ADRC),<sup>43,44</sup> and the MRC genetic resource for Late-onset AD included in the Genetic and Environmental Risk in AD Consortium (UK-Cardiff).<sup>27,31,45</sup> For additional detail of each source program's clinical assessment methodology and demographics, see Supplementary Material. Collection of clinical data and genetic samples were approved by each source program's local Institutional Review Board or Medical Ethics Committee, as appropriate.

### *Characterization of Psychosis*

Subjects were characterized for the presence or absence of delusions and hallucinations within the individual source programs (including their sub-studies) using the CERAD behavioral rating scale<sup>46</sup> (PITT ADRC and NIA-LOAD), Neuropsychiatric Inventory Questionnaire (NPI-Q,<sup>47</sup> NIA-

LOAD, ADC, NEXGENS), NPI-Q Spanish Language Version<sup>48</sup> (ACE/GR@ACE), NPI<sup>49</sup> (UK-Cardiff, NEXGENS, LILLY), and Brief Psychiatric Rating Scale<sup>50</sup> (NIMH). Each of these instruments has established reliability in AD,<sup>5,51</sup> and we have previously used all successfully in analyses of psychosis in AD subjects.<sup>4,5,7,23,43</sup> Details of the application of these instruments for each source program are provided in the Supplementary Methods. AD+P was defined by the presence of persistent hallucinations or delusions throughout the course of dementia, AD-P was defined by the absence of all symptoms at all assessments. However, because psychotic symptoms typically emerge in the transition from mild to moderate stages of AD<sup>5</sup>, individuals without psychosis, but who were still in the early stages of disease at their last assessment (CDR® Dementia Staging Instrument<sup>52</sup> score < 1, mini-mental state examination score<sup>53</sup> > 20), were considered to be at substantial risk of developing AD+P later in their course. Thus, these individuals were excluded from the analysis. We have used these approaches to characterizing and defining AD+P and AD-P in multiple studies demonstrating the heritability and association with genetic variation of the AD+P phenotype.<sup>5,23,24,26-28,54</sup>

### *Genotypes*

Six of the eight program sources provided us with either blood (ACE/GR@ACE) or DNA samples (PITT ADRC, UK-Cardiff, NIA-LOAD, ADC, NIMH), all of which were processed by the Genomics Core Lab at the University of Pittsburgh. Genomic DNA was extracted from whole blood samples using the Qiamp Blood Mini kit (Qiagen, Valencia, CA). All DNA was quantitated by Pico Green (Thermo Fisher, Pittsburgh, PA) and diluted to a DNA concentration of 23ng/μl. Samples without the required amount of DNA were plated for whole genome amplification (WGA) and re-quantified. The above samples were genotyped at the Children's Hospital of Philadelphia (CHoP, Philadelphia, PA) using Illumina's Global Screening Array (Illumina, San Diego, CA). Prior to genotyping, ChoP confirmed DNA concentrations by Pico Green assay, and performed additional WGA on samples when necessary.

In addition to the above-mentioned blood and DNA samples, ACE/GR@ACE, LILLY, and NIA-LOAD provided us with single nucleotide polymorphism (SNP) array data. For the ADC, SNP array data was provided by the Alzheimer's Disease Genetics Consortium (ADGC). NEXGENS provided genome-wide association (GWA) statistics for the comparison of AD-P and AD+P. Additional details of the generation of SNP array data for all programs can be found in the Supplementary Material.

### *Analysis*

**Overview of statistical analyses:** Data from the eight program sources were processed as four cohorts (Phase 1, Phase 2, GR@ACE, and NEXGENS), based on timing of receipt of the data. Data processing, QC, and statistical analyses were uniform across three of the cohorts for which there were genotypes (Phase 1, Phase 2, GR@ACE), whereas only summary statistics were available for the fourth cohort (NEXGENS). All cohorts were analyzed separately for GWA, then statistics per SNP from these analyses were combined by meta-analysis using METAL.<sup>55</sup> Below we describe quality control procedures for the three genotyped cohorts and an overview of other methods. For more detail see the Supplementary Material. Additional details for the NEXGENS cohort have also been described previously.<sup>56</sup> Methods were implemented within Plink<sup>57,58</sup> unless otherwise noted.

**Quality Control (QC):** QC was completed by both genotype and by sample from Phase 1, Phase 2, and GR@ACE. For QC by genotype, SNPs were removed if they had an unknown location, were monomorphic, were duplicated, did not map to an autosome or X-linked chromosome, had a non-call rate > 0.025, had a minor allele frequency MAF < 0.01, or had an exact Hardy-Weinberg p-value < 0.005 in the major European ancestry group, as defined below. For QC by sample, samples were removed if their overall SNP non-call rates > 0.025, if they



showed extreme homo- or heterozygosity ( $< -0.15$  or  $> 0.4$ , respectively), if their nominal versus inferred genetic sex did not match, or if they were determined to be duplicates of other samples within or between cohorts. Raw genotype data for individual NEXGEN cohorts underwent appropriate QC steps (implemented in PLINK).<sup>56</sup> After QC, 6,872 AD-P and 5,445 AD+P subjects, distributed across the four cohorts, remained for analysis (Table 1B).

**Ancestry:** We determined ancestry using GemTools analysis<sup>59</sup> of a subset of autosomal SNPs with non-call rate  $< 0.001$  and MAF  $> 0.05$  for Phase 1, Phase 2, and GR@ACE. These SNPs were pruned such that, within a 50 SNP block and a 5 SNP step-size, the linkage disequilibrium  $r^2 < 0.01$ . For each of the four cohorts, a different subset of SNPs was chosen for ancestry analysis, and the resulting ancestry plots were used to identify the samples in the major European ancestry cluster. Analysis of NEXGENS was restricted to individuals of European ancestry using genetic principal components computed by EIGENSTRAT.<sup>60</sup>

**Imputation:** Genotypes were imputed using the Sanger Imputation Server,<sup>61</sup> the 1000 Genomes Phase3 reference panel,<sup>62</sup> and EAGLE2 for pre-phasing<sup>63</sup> for Phase 1, Phase 2, and GR@ACE. Before imputation, the genotypes were harmonized using the perl script HRC-1000G-check-bim-v4.2.5.pl. This resulted in 85,057,462 imputed or genotyped SNPs for each sample. QC of the imputed SNPs included the requirement that the INFO score for a SNP in each data set  $> 0.81$ ; MAF  $> 0.01$ ; and, among all European ancestry subpopulations defined by GemTools,  $F_{st} < 0.005$ . For NexGENS Phasing and imputation was done via the Sanger Imputation Service using the Haplotype Reference Consortium (r1.1) reference panel on all cohorts. After imputation only SNPs with an imputation quality (INFO) score  $> 0.4$  and MAF  $> 0.05$  were retained.

**Association:** Separate GWA analyses were performed for the Phase 1, Phase 2, and GR@ACE cohorts, to contrast AD+P versus AD-P for the 9,200,578 SNPs using the Plink option --logistic and with adjustment for the three ancestry dimensions (**Supplementary Figures 3-5**). For chromosome X, an additional covariate for sex was included. For NEXGENS, separate logistic regressions, implemented in PLINK for each of the 5 NEXGENS consortium datasets (**Tables S6.1-S6.5**), was used to contrast AD+P versus AD-P for each SNP, with adjustment for the first 10 ancestry principal components. METAL software was used to conduct inverse-variance weighted fixed effects meta-analysis across the 5 NEXGENS datasets, applying genomic control,<sup>55</sup> to generate the summary statistics used in the current analysis. The four GWAS statistics (Phase 1, Phase 2, GR@ACE, NEXGENS summary), per SNP, were then meta-analyzed using METAL.

**SNP-based estimates of AD+P heritability and genetic correlations:** Heritability of AD+P using GenomicSEM was estimated from 1,126,265 summary statistics from our METAL analysis. Of the 7,105,229 SNPs used for GWAS, 1,126,265 matched to those available on the GenomicSEM website. Also, using genome-wide complex trait analysis (GCTA),<sup>64</sup> heritability was estimated from 9,031 samples of European ancestry drawn from the Phase 1, Phase 2, and GR@ACE cohorts for which individual genotypes were available (Table 1B). Two eigenvectors were used to control for ancestry, 997,105 SNPs were included in the analysis.

Individuals of European ancestry from all four cohorts were used to estimate genetic correlations using LD Score<sup>65</sup> and LD HUB (version 1.9.3).<sup>66</sup> We selected phenotypes for analysis based on prior studies showing correlations with psychosis in AD (years of schooling, depressive symptoms) or genetic association with AD+P (schizophrenia), or because they are closely related with the above four phenotypes. Specifically, we included intelligence, which is genetically correlated with years of schooling, bipolar disorder which is strongly genetically

correlated with both depressive symptoms and schizophrenia. Finally, we included AD as it is a necessary condition of AD±P, and two other neurodegenerative diseases, amyotrophic lateral sclerosis (ALS) and Parkinson's disease, each of which is associated with a neuropathology that may contribute to psychosis risk in AD.

## Results

A total of 12,317 subjects, 6,872 AD-P and 5,445 AD+P, were included in this GWAS analysis (Table 1A). Contrasting AD-P to AD+P genotypes across the genome revealed two significant loci (Fig. 1, Supplementary Table 1). One locus was at 4q24, mapping to an intron of *ENPP6* (best SNP rs9994623, O.R. (95%CI) 1.16 (1.10, 1.22),  $p=1.26 \times 10^{-8}$ ). The other locus was at 3p26.1 (best SNP rs201109606, O.R. 0.65 (0.56-0.76),  $p=3.24 \times 10^{-8}$ ). This locus spans the 3' untranslated region (3'-UTR) of an alternatively spliced variant of *SUMF1* (SUMF1-204 ENST00000448413.5). None of the SNPs showing significant association in these loci are annotated as expression quantitative trait loci (eQTL) in GTEx. Behavior of the association statistics, as assessed by probability-probability plot (Supplementary Figure 1), is consistent with the expectation for such analyses, and the genomic control estimate,<sup>67</sup> GC=1.03, shows no evidence for confounding by ancestry.

While earlier studies the AD+P phenotype have shown strong clustering in families and substantial heritability, SNP-based heritability has not been estimated. We estimated it in two ways. First, by analyzing our GWAS statistics using GenomicSEM, SNP-based heritability was estimated at  $0.181 \pm 0.064$  (Chi-square = 8.0, df=1,  $p = .005$ ). An alternative approach, using the GCTA software, evaluated genotypes genome-wide to determine relationships among the samples and how they partitioned within and between AD+P and AD-P sets. This estimate was  $0.312 \pm 0.053$  (Chi-square = 34.98, df=1,  $p = 3.3 \times 10^{-9}$ ). The larger estimate probably arises

due to greater information contained in estimated genetic relationships, relative to our modestly powered GWAS, although the heritability estimates are not significantly different. The GCTA analysis focused on subjects of European ancestry, genetically determined, to avoid confounding of ancestry.

Subjects of European ancestry were also used to estimate genetic correlations of AD+P with select phenotypes available from LD HUB (Table 2). Consistent with clinical observations, AD+P is significantly genetically correlated with “Years of Schooling” (and nearly so with the related phenotype, “Intelligence”) and with “Depressive Symptoms”. In contrast, AD+P was not significantly genetically correlated with AD (Table 2). In fact, only 7 SNPs with p value  $<10^{-4}$  for association with psychosis in AD, all in chr19:44885243- 44908684 (hg38), occur in one of the 25 loci significantly associated with AD.<sup>68</sup> Nor was AD+P significantly genetically correlated with the two other neurodegenerative disorders evaluated, ALS and Parkinson disease (Table 2).

We previously found a significant relationship between risk for AD+P and schizophrenia.<sup>28</sup> Specifically, we genotyped 94 of 128 SNPs that showed genome-wide-significance for association with schizophrenia in a sample of AD+P subjects. We constructed a predictive score for schizophrenia risk from these SNPs, then assessed whether this score predicted AD+P status in the AD sample. There was a significant negative correlation between the risk score for schizophrenia and AD+P status, which we then replicated by genotyping 60 of the 94 risk SNPs in an independent sample. Now, using SNPs from across the genome and a larger set of AD subjects, results from LD HUB show a negative, but non-significant, genetic correlation with schizophrenia, while showing a negative and significant genetic correlation with bipolar disorder (Table 2). In fact, no SNP with p value  $<10^{-4}$  for association with psychosis in AD had a p value  $<10^{-5}$  in the 108 loci associated with schizophrenia.<sup>69</sup>

Because bipolar disorder and schizophrenia are genetically correlated, we next asked if our original result for the 94 SNPs could be explained by an overlap of risk SNPs for schizophrenia and bipolar disorder. To do so, we tested whether the odds ratios for association of these SNPs for these disorders<sup>69,70</sup> were independent. They were not (Supplementary Figure 2), 91 of 94 SNPs had odds ratios exceeding one for both disorders, whereas 47 were expected under independence (sign test,  $p = 5.8 \times 10^{-20}$ ).

## Discussion

We identified evidence of genome-wide significant association with psychosis risk in AD at SNPs within *ENPP6* and in the 3'-UTR of an alternatively spliced transcript of *SUMF1*. Exploration of multiple data sets did not reveal any current evidence linking the SNPs at these loci to variation in expression of *ENPP6*, *SUMF1*, or other genes. Similarly, although the alternatively spliced *SUMF1*-204 transcript is expressed in brain,<sup>71</sup> AD+P risk SNPs in the *SUMF1* locus were not associated with brain expression of *SUMF1*-204 (S. Sieberts, Personal Communication). Nor were SNPs at these loci linked to other potential genetic mechanisms, such as variation in epigenetic modifications. However, we note that for *SUMF1*, the locus is located in the 3'-UTR, a region that often serves a substantial role in regulating protein levels via post-transcriptional mechanisms.<sup>72</sup>

*ENPP6* encodes a glycerophosphodiesterase that is highly expressed in new oligodendrocytes as they differentiate from their precursors.<sup>73</sup> Recent data in mice have demonstrated that differentiation of oligodendrocytes from their precursors (as indicated by increased *ENPP6* mRNA expression) is a necessary component of early,<sup>74</sup> i.e. synaptic,<sup>75</sup> phases of new (motor) learning. *ENPP6* protein can be expressed both on the myelin membrane and as a soluble form that is found extracellularly.<sup>76,77</sup> *ENPP6* acts as a hydrolase that severs choline from substrates, including lysophosphatidylcholine, glycerophosphorylcholine, and

sphingosylphosphorylcholine.<sup>77</sup> Of these, it has highest catalytic efficiency towards sphingosylphosphorylcholine,<sup>76</sup> releasing both sphingosine and phosphocholine. Sphingosine is phosphorylated to generate sphingosine-1-phosphate, which signals via the g-protein-coupled sphingosine-1-phosphate receptor (S1PR1). It is of some interest, therefore, that the S1PR1 modulator, fingolimod,<sup>78</sup> has been previously shown to increase excitatory synaptic transmission<sup>79</sup> and improve psychosis-associated behaviors in a genetic animal model of  $\beta$ -amyloid overproduction.<sup>80</sup>

The locus on chromosome 3 maps to introns spanning the 3'-UTR of an alternatively spliced transcript of *SUMF1*. *SUMF1* encodes formylglycine-generating enzyme, which serves as a master activator of lysosomal sulfatases by converting conserved cysteines to formylglycine in their active sites. As a consequence, genetic disruption of *SUMF1* leads to a multiple sulfatase deficiency syndrome.<sup>81,82</sup> Importantly, the transcript of *SUMF1* (SUMF1-204, ENST00000448413.5) within which our locus is located encodes an isoform of formylglycine-generating enzyme (isoform 3, Uniprot Accession Q8NBK3-3) lacking the enzymatically active Cys341 residue.<sup>83</sup> The functional consequences of this change are not established, but would be anticipated to reduce or eliminate the primary enzymatic function. The function of the novel sequence that replaces the c-terminal of formylglycine-generating enzyme in isoform 3 is also not known, and BLAST of this sequence against the UNIPROT database does not identify homologous proteins. Nevertheless, speaking to the potential functional impact in AD+P, ENST00000448413.5 is detectable in cerebral cortex.<sup>71</sup>

Recently, an appreciation of how lysosomal storage dysfunction also leads to impaired autophagy has emerged.<sup>84</sup> It is thus not surprising, therefore, that selective depletion of *SUMF1* in either astrocytes or neurons results in neurodegeneration.<sup>85</sup> How alterations in function of formylglycine-generating enzyme due to a potential change in levels of isoform 3 may modify

the course of AD through these mechanisms and thus result in the AD+P phenotype remains speculative. We have previously shown, however, that preservation of synaptic protein levels in the context of AD neuropathology is associated with reduced psychosis risk.<sup>80</sup> Thus, genetic alterations that impact degradation of synaptic proteins by the lysosome to autophagosome pathway are likely to influence risk of psychosis.

We and others<sup>34</sup> have previously evaluated the association of psychosis in AD with *APOE\*4*. Although earlier, smaller studies had yielded inconsistent results, our larger study found no association.<sup>34</sup> Inconsistencies of earlier studies do not appear to arise from linked variation in *TOMM40*.<sup>86</sup> Our current findings shed further light on these prior observations. SNPs spanning the *APOE/TOMM40* locus that show some evidence of association with AD+P (Supplementary Table 1) serve as eQTLs for *BLOC1S3*,<sup>87</sup> a component of the BLOC-1 endosomal/lysosomal complex.<sup>88</sup> BLOC-1 complexes have a diverse array of functions in intracellular trafficking required for maintenance of multiple pre- and post-synaptic proteins and of synaptic structural integrity.<sup>89</sup> Thus altered expression of *BLOC1S3*, like *SUMF1*, may contribute to synaptic vulnerability in AD+P.

Of interest, we found some evidence for association of AD+P with rs11701 (Supplementary Table 1,  $4.0 \times 10^{-6}$ ). rs11701 is located on chromosome 14, within two genes, *ANG* and *RNASE4*, which share promoters and some 5' exons, although each gene is spliced to a unique downstream exon containing its complete coding region. rs11701 is a synonymous coding variant in *ANG*, is intronic in *RNASE4*, and its protein products are members of the RNase A Superfamily. Loss-of-function mutations in both *ANG* and *RNASE4* have been associated with amyotrophic lateral sclerosis/frontotemporal dementia (ALS/FTD) syndromes.<sup>90-95</sup> *ANG* preferentially hydrolyzes transfer RNA (tRNA) *in vivo*.<sup>96</sup> Understanding of how tRNA-derived fragments generated by *ANG* may contribute to neuroprotection is rapidly expanding.<sup>97</sup>

It would thus be parsimonious to hypothesize that less potent alterations in expression of *ANG* and *RNASE4*, or in functions of their protein products, modify neuronal function or survival, which in turn, increases the risk for psychosis in individuals with AD. Several observations are consistent with this hypothesis. For example, rs11701 has been linked to expression levels for both genes in some tissues.<sup>98</sup> While it is not known if mutations in *ANG* or *RNASE4* are present in AD+P, some of these mutations result in tar DNA binding protein 43 (TDP43) inclusion pathology on postmortem exam in ALS/FTD patients.<sup>99</sup> We have previously reported that the presence of comorbid TDP43 pathology in AD is independently associated with psychosis risk.<sup>100</sup>

We previously identified, and independently replicated, an inverse association between polygenic risk for schizophrenia, defined by a limited set of schizophrenia risk SNPs<sup>69</sup>, and risk for psychosis in AD.<sup>28</sup> It was thus somewhat surprising that we saw a non-significant genetic correlation between these two disorders when considering both a larger set of SNPs and a substantially enlarged cohort of AD subjects with and without psychosis. Instead, we identified a negative genetic correlation with risk for bipolar disorder, a disorder that has substantial genetic overlap with schizophrenia. Because our prior analyses relied on a subset of SNPs significantly associated with risk for schizophrenia, and this set also shows enrichment for affecting risk for bipolar disorder (Supplementary Figure 2), this overlap probably explains the discrepancy we now observe between our earlier results and the current results for genetic correlations. In contrast, we observed a positive genetic correlation between risk for depressive symptoms and AD+P risk, consistent with clinical observations of co-occurrence of depressive and psychotic symptoms in AD patients,<sup>5,13-15</sup> and evidence that antidepressant medications may have some effect in reducing psychotic symptoms in AD.<sup>101,102</sup>



We also observed a significant negative genetic correlation of educational level with psychosis risk in AD and a similar pattern, but not quite significant relationship with intelligence. Greater cognitive impairment increases the risk for psychosis in AD; moreover, psychosis in AD is further associated with a more rapid rate of cognitive decline<sup>2-9</sup> (see also review in<sup>103</sup>). The current findings extend these earlier observations, by showing genetic overlap with measures that may be better construed as indicative of cognitive reserve, as they reflect early life cognitive attainment. Cognitive reserve has long been recognized as protective against developing a degree of cognitive and functional impairment sufficient to lead to a diagnosis of AD.<sup>104</sup> However, somewhat counter-intuitively, once AD is diagnosed, individuals with greater cognitive reserve decline more rapidly.<sup>104</sup> Thus, the genetic correlations we observed may point to a biology underlying the presence of greater cognitive impairment in AD, but not the more rapid decline associated with AD+P.

We did not observe any genetic correlation between AD+P risk and risk for AD, ALS, or Parkinson's disease. The former is not surprising as all our subjects, with or without psychosis, have AD. The lack of genetic overlap with ALS (despite the modest evidence for association of AD+P with *ANG/RNASE4*), suggest that cases in which a comorbid pathogenic process associated with ALS/FTD contribute to the manifestation of psychosis in AD account for only a small proportion of AD+P. This conclusion is consistent with our prior pathologic observations, in which the presence of TDP-43 pathology predicted only 5% of the variance in risk for AD+P.<sup>100</sup> Importantly, the lack of genetic correlation with Parkinson's disease indicates that our AD+P phenotype did not derive from a phenocopy due to inclusion of subjects with primary alpha-synuclein pathology, which itself is associated with psychosis.<sup>105</sup>

The above findings are subject to several potential limitations. Although our analysis is the largest GWA study of AD+P to date, it is nevertheless modest in sample size in comparison to

studies of related complex traits.<sup>68,69</sup> As our heritability results show, a substantial increase in sample size will identify many additional loci as having a significant association with psychosis risk in AD. Similarly, our tests of genetic correlation would be influenced by both the limited power of our study and that of the other phenotype, as well as the degree to which liability to both phenotypes arises from common genetic variation. Finally, we note that we examined the association of genetic variation with a psychosis phenotype defined by the presence of one or more of multiple individual psychotic symptoms. It is possible that relevant subgroups could exist within the AD+P phenotype.<sup>106</sup> However, several lines of evidence support the phenotype definition used in the current study. First, our approach mirrors that used to define other psychotic disorders, e.g. schizophrenia. Second, AD+P as defined in the current study demonstrates familial aggregation and heritability.<sup>5,23,26</sup> Moreover, the heritability of AD+P is highest when requiring the presence of multiple or recurrent psychotic symptoms.<sup>23,26</sup> Nevertheless, it remains possible that any of the loci we report as significantly or suggestively associated with AD+P reflect a selective association with only a subset of psychosis symptoms.

Currently established treatments for psychosis in AD patients are suboptimal, perhaps reflecting in part that these treatments were not derived to prevent or reverse an identified biology of AD+P.<sup>103</sup> The development of effective, specific, therapeutic targets will therefore require as a first step delineating this underlying biology. Our study provides the first unbiased evidence of association of specific genetic loci with psychosis in AD and, can thus serve as an initial road map to AD+P biology. These findings, in conjunction with available functional genomic and post-mortem data, provide multiple links to mechanisms influencing synaptic function as contributors to psychosis in AD.

## **Acknowledgments**

This study was supported by the following federal grants: AG027224 (RAS), MH116046 (RAS), MH057881 (BD), AG030653 (MIK), AG041718 (MIK), AG066468 (OLL)

A complete acknowledgements list of contributing individuals, consortia, and their grant support can be found in Supplementary Material.

### **Author Contributions**

Each author is expected to have made substantial contributions:

1. to the conception **or** design of the work; RAS, Bernie, Ilyas, Clive, Oscar
2. to the acquisition, analysis, **or** interpretation of data; MAAD-S, LK, BC, EAW, LM, RS, IH, SM-G, LT, MB, EA-M, SV, YL, BH, DA, GS, SB, AR, IS, HKS, BE, ES, OAA, SD, LA, DS, BB, DA, GF, PM, AS, DDR, AP, GP, JW, RM, TF, AR, CB, OLL, MIK, BD, RAS
3. to the creation of new software used in the work; YL
4. have drafted the manuscript or substantively revised it. MAAS-S, LK, BC, LM, CB, MIK, BD, RAS

Each author must have approved the submitted version (and any substantially modified version that involves the author's contribution to the study) AND to have agreed both to be personally accountable for the author's own contributions and to ensure that questions related to the accuracy or integrity of any part of the work, even ones in which the author was not personally involved, are appropriately investigated, resolved, and the resolution documented in the literature.

### **Conflicts of Interest**

Yushi Liu and Basavaraj Hooli are currently employed by and holding stock in Eli Lilly and Company

Dr. Ballard reports grants and personal fees from Acadia pharmaceutical company, grants and personal fees from Lundbeck, personal fees from Roche, personal fees from Otsuka, personal fees from Biogen, personal fees from Eli Lilly, personal fees from Novo Nordisk, personal fees

from AARP, grants and personal fees from Synexus, personal fees from Exciva, outside the submitted work.

Oscar Lopez served as a consultant for Grifols, Inc.

Dr Saltvedt has been investigator in the drug trial Boehringer-Ingelheim 1346.0023

Ole A. Andreassen: Consultant to HEALTHLYTIX, speaker honoraria from Lundbeck.

## References

- 1 Sweet, R. A., Nimgaonkar, V. L., Devlin, B. & Jeste, D. V. Psychotic symptoms in Alzheimer disease: evidence for a distinct phenotype. *Molecular Psychiatry* **8**, 383-392 (2003).
- 2 Ropacki, S. A. & Jeste, D. V. Epidemiology of and risk factors for psychosis of Alzheimer's disease: a review of 55 studies published from 1990 to 2003. *Am. J. Psychiatry* **162**, 2022-2030 (2005).
- 3 Weamer, E. A. *et al.* The relationship of excess cognitive impairment in MCI and early Alzheimer's disease to the subsequent emergence of psychosis. *Int. Psychogeriatr* **21**, 78-85 (2009).
- 4 Emanuel, J. E. *et al.* Trajectory of cognitive decline as a predictor of psychosis in early Alzheimer disease in the cardiovascular health study. *Am. J. Geriatr. Psychiatry* **19**, 160-168 (2011).
- 5 Sweet, R. A., Bennett, D. A., Graff-Radford, N. R. & Mayeux, R. Assessment and familial aggregation of psychosis in Alzheimer's disease from the National Institute on Aging Late Onset Alzheimer's Disease Family Study. *Brain* **133**, 1155-1162 (2010).
- 6 Seltman, H. J., Mitchell, S. & Sweet, R. A. A Bayesian model of psychosis symptom trajectory in Alzheimer's disease. *Int. J. Geriatr. Psychiatry* **31**, 204-210 (2016).
- 7 Sweet, R. A. *et al.* Effect of Alzheimer's disease risk genes on trajectories of cognitive function in the Cardiovascular Health Study. *Am J Psychiatry* **169**, 954-962 (2012).
- 8 Koppel, J. *et al.* Psychosis in Alzheimer's disease is associated with frontal metabolic impairment and accelerated decline in working memory: findings from the Alzheimer's Disease Neuroimaging Initiative. *Am. J. Geriatr. Psychiatry* **22**, 698-707 (2014).
- 9 Koppel, J. *et al.* Relationships between behavioral syndromes and cognitive domains in Alzheimer disease: the impact of mood and psychosis. *Am J Geriatr Psychiatry* **20**, 994-1000 (2012).
- 10 Gilley, D. W., Whalen, M. E., Wilson, R. S. & Bennett, D. A. Hallucinations and associated factors in Alzheimer's disease. *J. Neuropsychiatry* **3**, 371-376 (1991).
- 11 Gilley, D. W., Wilson, R. S., Beckett, L. A. & Evans, D. A. Psychotic symptoms and physically aggressive behavior in Alzheimer's disease. *J. Am. Geriatr. Soc* **45**, 1074-1079 (1997).
- 12 Sweet, R. A. *et al.* The 5-HTTPR polymorphism confers liability to a combined phenotype of psychotic and aggressive behavior in Alzheimer's disease. *International Psychogeriatrics* **13**, 401-409 (2001).
- 13 Wilkosz, P. A. *et al.* Prediction of psychosis onset in Alzheimer disease: the role of depression symptom severity and the HTR2A T102C polymorphism. *Am. J. Med. Genet. B Neuropsychiatr. Genet* **144B**, 1054-1062 (2007).
- 14 Wilkosz, P. A., Miyahara, S., Lopez, O. L., DeKosky, S. T. & Sweet, R. A. Prediction of psychosis onset in Alzheimer disease: The role of cognitive impairment, depressive symptoms, and further evidence for psychosis subtypes. *Am. J. Geriatr. Psychiatry* **14**, 352-360 (2006).
- 15 Lyketsos, C. G. *et al.* Neuropsychiatric disturbance in Alzheimer's disease clusters into three groups: the Cache County study. *Int. J. Geriatr. Psychiatry* **16**, 1043-1053 (2001).
- 16 Kaufer, D. I. *et al.* Assessing the impact of neuropsychiatric symptoms in Alzheimer's disease: the Neuropsychiatric Inventory Caregiver Distress Scale. *J. Am. Geriatr. Soc* **46**, 210-215 (1998).
- 17 Rabins, P. V., Mace, N. L. & Lucas, M. J. The impact of dementia on the family. *JAMA* **248**, 333-335 (1982).

- 18 Lopez, O. L., Wisniewski, S. R., Becker, J. T., Boller, F. & DeKosky, S. T. Psychiatric medication and abnormal behavior as predictors of progression in probable Alzheimer disease. *Arch. Neurol* **56**, 1266-1272 (1999).
- 19 Magni, E., Binetti, G., Bianchetti, A. & Trabucchi, M. Risk of mortality and institutionalization in demented patients with delusions. *J. Geriatr. Psychiatry Neurol* **9**, 123-126 (1996).
- 20 Cummings, J. L., Diaz, C., Levy, M., Binetti, G. & Litvan, I., I. Neuropsychiatric Syndromes in Neurodegenerative Disease: Frequency and Significance. *Semin. Clin. Neuropsychiatry* **1**, 241-247 (1996).
- 21 Bassiony, M. M., Steinberg, M., Rosenblatt, A., Baker, A. & Lyketsos, C. G. Delusions and hallucinations in Alzheimer's disease: Prevalence and clinical correlates. *Int. J. Geriatr. Psychiatry* **15**, 99-107 (2000).
- 22 Wilson, R. S. *et al.* Hallucinations, cognitive decline, and death in Alzheimer's disease. *Neuroepidemiology* **26**, 68-75 (2006).
- 23 Bacanu, S. A. *et al.* Heritability of psychosis in Alzheimer disease. *American Journal of Geriatric Psychiatry* **13**, 624-627 (2005).
- 24 Sweet, R. A., Nimgaonkar, V. L., Devlin, B., Lopez, O. L. & DeKosky, S. T. Increased familial risk of the psychotic phenotype of Alzheimer disease. *Neurology* **58**, 907-911 (2002).
- 25 Hollingworth, P. *et al.* Increased familial risk and genomewide significant linkage for Alzheimer's disease with psychosis. *Am. J. Med. Genet. B Neuropsychiatr. Genet* **144B**, 841-848 (2007).
- 26 Barral, S. *et al.* Genetic variants associated with susceptibility to psychosis in late-onset Alzheimer's disease families. *Neurobiol. Aging* **36**, 3116-3116 (2015).
- 27 Hollingworth, P. *et al.* Genome-wide association study of Alzheimer's disease with psychotic symptoms. *Mol. Psychiatry* **17**, 1316-1327 (2012).
- 28 DeMichele-Sweet, M. A. A. *et al.* Genetic risk for schizophrenia and psychosis in Alzheimer disease. *Mol Psychiatry* **23**, 963-972, doi:10.1038/mp.2017.81 (2018).
- 29 McKhann, G. *et al.* Clinical diagnosis of Alzheimer's disease: report of the NINCDS-ADRDA work group under the auspices of Department of Health and Human Services Task Force on Alzheimer's disease. *Neurology* **34**, 939-944 (1984).
- 30 Mirra, S. S. *et al.* The consortium to establish a registry for Alzheimer's disease (CERAD). Part II. Standardization of the neuropathologic assessment of Alzheimer's disease. *Neurology* **41**, 479-486 (1991).
- 31 Seshadri, S. *et al.* Genome-wide analysis of genetic loci associated with Alzheimer disease. *JAMA* **303**, 1832-1840 (2010).
- 32 Lambert, M. J., Hatch, D. R., Kingston, M. D. & Edwards, B. C. Zung, Beck, and Hamilton Rating Scales as measures of treatment outcome: A meta-analytic comparison. *J. Consult. Clin. Psychol* **54**, 54-59 (1986).
- 33 Moreno-Grau, S. *et al.* Genome-wide association analysis of dementia and its clinical endophenotypes reveal novel loci associated with Alzheimer's disease and three causality networks: The GR@ACE project. *Alzheimers Dement* **15**, 1333-1347, doi:10.1016/j.jalz.2019.06.4950 (2019).
- 34 DeMichele-Sweet, M. A., Lopez, O. L. & Sweet, R. A. Psychosis in Alzheimer's disease in the national Alzheimer's disease coordinating center uniform data set: clinical correlates and association with apolipoprotein e. *Int. J. Alzheimers. Dis* **2011** (2011).
- 35 Doody, R. S. *et al.* Phase 3 trials of solanezumab for mild-to-moderate Alzheimer's disease. *N Engl J Med* **370**, 311-321, doi:10.1056/NEJMoa1312889 (2014).
- 36 Honig, L. S. *et al.* Trial of Solanezumab for Mild Dementia Due to Alzheimer's Disease. *N Engl J Med* **378**, 321-330, doi:10.1056/NEJMoa1705971 (2018).

- 37 Lovestone, S. *et al.* AddNeuroMed--the European collaboration for the discovery of novel biomarkers for Alzheimer's disease. *Ann N Y Acad Sci* **1180**, 36-46, doi:10.1111/j.1749-6632.2009.05064.x (2009).
- 38 Roen, I. *et al.* Resource Use and Disease Course in dementia - Nursing Home (REDIC-NH), a longitudinal cohort study; design and patient characteristics at admission to Norwegian nursing homes. *BMC Health Serv Res* **17**, 365, doi:10.1186/s12913-017-2289-x (2017).
- 39 Helvik, A. S., Engedal, K., Saltyte Benth, J. & Selbaek, G. Time from Symptom Debut to Dementia Assessment by the Specialist Healthcare Service in Norway. *Dement Geriatr Cogn Dis Extra* **8**, 117-127, doi:10.1159/000487233 (2018).
- 40 Eldholm, R. S. *et al.* Progression of Alzheimer's Disease: A Longitudinal Study in Norwegian Memory Clinics. *J Alzheimers Dis* **61**, 1221-1232, doi:10.3233/JAD-170436 (2018).
- 41 Bergh, S. *et al.* Cohort profile: the Health and Memory Study (HMS): a dementia cohort linked to the HUNT study in Norway. *Int J Epidemiol* **43**, 1759-1768, doi:10.1093/ije/dyu007 (2014).
- 42 Jansen, I. E. *et al.* Genome-wide meta-analysis identifies new loci and functional pathways influencing Alzheimer's disease risk. *Nat Genet* **51**, 404-413, doi:10.1038/s41588-018-0311-9 (2019).
- 43 DeMichele-Sweet, M. A. *et al.* No association of psychosis in Alzheimer disease with neurodegenerative pathway genes. *Neurobiol Aging* **32**, 555-511 (2011).
- 44 Weamer, E. A., DeMichele-Sweet, M. A., Cloonan, Y. K., Lopez, O. L. & Sweet, R. A. Incident Psychosis in Subjects With Mild Cognitive Impairment or Alzheimer's Disease. *J. Clin. Psychiatry* **77**, e1564-e1569 (2016).
- 45 Lambert, J. C. *et al.* Meta-analysis of 74,046 individuals identifies 11 new susceptibility loci for Alzheimer's disease. *Nat Genet* **45**, 1452-1458 (2013).
- 46 Tariot, P. N. *et al.* The behavior rating scale for dementia of the Consortium to Establish a Registry for Alzheimer's Disease. *Am. J. Psychiatry* **152**, 1349-1357 (1995).
- 47 Kaufer, D. I. *et al.* Validation of the NPI-Q, a brief clinical form of the Neuropsychiatric Inventory. *J Neuropsychiatry Clin Neurosci* **12**, 233-239 (2000).
- 48 Boada, M., Cejudo, J. C., Tarraga, L., Lopez, O. L. & Kaufer, D. Neuropsychiatric Inventory Questionnaire (NPI-Q): Spanish validation of a brief clinical form of the Neuropsychiatric inventory (NPI). *Neurologia* **17**, 317-323 (2002).
- 49 Cummings, J. L. *et al.* The neuropsychiatric inventory: comprehensive assessment of psychopathology in dementia. *Neurology* **44**, 2308-2314 (1994).
- 50 Overall, J. E. & Gorham, D. R. The brief psychiatric rating scale. *Psychol. Rep* **10**, 799-812 (1962).
- 51 Zubenko, G. S., Rosen, J., Sweet, R. A., Mulsant, B. H. & Rifai, A. H. Impact of psychiatric hospitalization on behavioral complications of Alzheimer's disease. *Am. J. Psychiatry* **149**, 1484-1491 (1992).
- 52 Hughes, C. P., Berg, L., Danziger, W. L., Coben, L. A. & Martin, R. L. A new clinical scale for the staging of dementia. *Br. J. Psychiatry* **140**, 566-572 (1982).
- 53 Folstein, M. F., Folstein, S. E. & McHugh, P. R. "Mini-mental state". A practical method for grading the cognitive state of patients for the clinician. *J. Psychiatr. Res* **12**, 189-198 (1975).
- 54 Bacanu, S. A. *et al.* Linkage analysis of Alzheimer disease with psychosis. *Neurology* **59**, 118-120 (2002).
- 55 Willer, C. J., Li, Y. & Abecasis, G. R. METAL: fast and efficient meta-analysis of genomewide association scans. *Bioinformatics* **26**, 2190-2191 (2010).

- 56 Creese, B. *et al.* Examining the association between genetic liability for schizophrenia and psychotic symptoms in Alzheimer's disease. *Transl Psychiatry* **9**, 273, doi:10.1038/s41398-019-0592-5 (2019).
- 57 Purcell, S. *et al.* PLINK: a tool set for whole-genome association and population-based linkage analyses. *Am J Hum Genet* **81**, 559-575, doi:10.1086/519795 (2007).
- 58 Chang, C. C. *et al.* Second-generation PLINK: rising to the challenge of larger and richer datasets. *Gigascience* **4**, 7, doi:10.1186/s13742-015-0047-8 (2015).
- 59 Lee, A. B., Luca, D., Klei, L., Devlin, B. & Roeder, K. Discovering genetic ancestry using spectral graph theory. *Genet. Epidemiol* **34**, 51-59 (2010).
- 60 Wang, L., Zhang, W. & Li, Q. AssocTests: An R Package for Genetic Association Studies. *2020* **94**, 26, doi:10.18637/jss.v094.i05 (2020).
- 61 McCarthy, S. *et al.* A reference panel of 64,976 haplotypes for genotype imputation. *Nat Genet* **48**, 1279-1283, doi:10.1038/ng.3643 (2016).
- 62 Genomes Project, C. *et al.* A global reference for human genetic variation. *Nature* **526**, 68-74, doi:10.1038/nature15393 (2015).
- 63 Loh, P. R. *et al.* Reference-based phasing using the Haplotype Reference Consortium panel. *Nat Genet* **48**, 1443-1448, doi:10.1038/ng.3679 (2016).
- 64 Yang, J., Lee, S. H., Goddard, M. E. & Visscher, P. M. GCTA: a tool for genome-wide complex trait analysis. *Am J Hum Genet* **88**, 76-82, doi:10.1016/j.ajhg.2010.11.011 (2011).
- 65 Bulik-Sullivan, B. K. *et al.* LD Score regression distinguishes confounding from polygenicity in genome-wide association studies. *Nat Genet* **47**, 291-295, doi:10.1038/ng.3211 (2015).
- 66 Zheng, J. *et al.* LD Hub: a centralized database and web interface to perform LD score regression that maximizes the potential of summary level GWAS data for SNP heritability and genetic correlation analysis. *Bioinformatics* **33**, 272-279, doi:10.1093/bioinformatics/btw613 (2017).
- 67 Devlin, B. & Roeder, K. Genomic control for association studies. *Biometrics* **55**, 997-1004 (1999).
- 68 Kunkle, B. W. *et al.* Genetic meta-analysis of diagnosed Alzheimer's disease identifies new risk loci and implicates Abeta, tau, immunity and lipid processing. *Nat Genet* **51**, 414-430, doi:10.1038/s41588-019-0358-2 (2019).
- 69 Biological insights from 108 schizophrenia-associated genetic loci. *Nature* **511**, 421-427 (2014).
- 70 Stahl, E. A. *et al.* Genome-wide association study identifies 30 loci associated with bipolar disorder. *Nat Genet* **51**, 793-803, doi:10.1038/s41588-019-0397-8 (2019).
- 71 Gandal, M. J. *et al.* Transcriptome-wide isoform-level dysregulation in ASD, schizophrenia, and bipolar disorder. *Science* **362**, doi:10.1126/science.aat8127 (2018).
- 72 Tushev, G. *et al.* Alternative 3' UTRs Modify the Localization, Regulatory Potential, Stability, and Plasticity of mRNAs in Neuronal Compartments. *Neuron* **98**, 495-511.e496, doi:10.1016/j.neuron.2018.03.030 (2018).
- 73 Zhang, Y. *et al.* An RNA-sequencing transcriptome and splicing database of glia, neurons, and vascular cells of the cerebral cortex. *J Neurosci* **34**, 11929-11947, doi:10.1523/JNEUROSCI.1860-14.2014 (2014).
- 74 Xiao, L. *et al.* Rapid production of new oligodendrocytes is required in the earliest stages of motor-skill learning. *Nat Neurosci* **19**, 1210-1217, doi:10.1038/nn.4351 (2016).
- 75 Xu, T. *et al.* Rapid formation and selective stabilization of synapses for enduring motor memories. *Nature* **462**, 915-919, doi:10.1038/nature08389 (2009).
- 76 Greiner-Tollersrud, L., Berg, T., Stensland, H. M., Evjen, G. & Greiner-Tollersrud, O. K. Bovine brain myelin glycerophosphocholine choline phosphodiesterase is an alkaline



- lysosphingomyelinase of the eNPP-family, regulated by lysosomal sorting. *Neurochem Res* **38**, 300-310, doi:10.1007/s11064-012-0921-z (2013).
- 77 Sakagami, H. *et al.* Biochemical and molecular characterization of a novel choline-specific glycerophosphodiester phosphodiesterase belonging to the nucleotide pyrophosphatase/phosphodiesterase family. *J Biol Chem* **280**, 23084-23093, doi:10.1074/jbc.M413438200 (2005).
- 78 Chun, J. & Brinkmann, V. A mechanistically novel, first oral therapy for multiple sclerosis: the development of fingolimod (FTY720, Gilenya). *Discov Med* **12**, 213-228 (2011).
- 79 Darios, F. D. *et al.* Sphingomimetic multiple sclerosis drug FTY720 activates vesicular synaptobrevin and augments neuroendocrine secretion. *Sci Rep* **7**, 5958, doi:10.1038/s41598-017-05948-z (2017).
- 80 Krivinko, J., Erickson, S., MacDonald, M., Garver, M. & Sweet, R. Fingolimod Treatment Rescues Psychosis-Associated Behavioral Aberrations in Appswet/Psen1de9 Mice. *The American Journal of Geriatric Psychiatry* **26**, S144-S145, doi:10.1016/j.jagp.2018.01.175 (2018).
- 81 Dierks, T. *et al.* Multiple sulfatase deficiency is caused by mutations in the gene encoding the human C(alpha)-formylglycine generating enzyme. *Cell* **113**, 435-444, doi:10.1016/s0092-8674(03)00347-7 (2003).
- 82 Cosma, M. P. *et al.* The multiple sulfatase deficiency gene encodes an essential and limiting factor for the activity of sulfatases. *Cell* **113**, 445-456, doi:10.1016/s0092-8674(03)00348-9 (2003).
- 83 Holder, P. G. *et al.* Reconstitution of Formylglycine-generating Enzyme with Copper(II) for Aldehyde Tag Conversion. *J Biol Chem* **290**, 15730-15745, doi:10.1074/jbc.M115.652669 (2015).
- 84 Seranova, E. *et al.* Dysregulation of autophagy as a common mechanism in lysosomal storage diseases. *Essays Biochem* **61**, 733-749, doi:10.1042/EBC20170055 (2017).
- 85 Di Malta, C., Fryer, J. D., Settembre, C. & Ballabio, A. Astrocyte dysfunction triggers neurodegeneration in a lysosomal storage disorder. *Proc Natl Acad Sci U S A* **109**, E2334-2342, doi:10.1073/pnas.1209577109 (2012).
- 86 Chu, S. H. *et al.* TOMM40 poly-T repeat lengths, age of onset and psychosis risk in Alzheimer disease. *Neurobiol Aging* **32**, 2328-2329 (2011).
- 87 Sieberts, S. K. *et al.* Large eQTL meta-analysis reveals differing patterns between cerebral cortical and cerebellar brain regions. *bioRxiv*, 638544, doi:10.1101/638544 (2019).
- 88 Dell'Angelica, E. C. The building BLOC(k)s of lysosomes and related organelles. *Curr Opin Cell Biol* **16**, 458-464, doi:10.1016/j.ceb.2004.05.001 (2004).
- 89 Hartwig, C. *et al.* Neurodevelopmental disease mechanisms, primary cilia, and endosomes converge on the BLOC-1 and BORC complexes. *Dev Neurobiol* **78**, 311-330, doi:10.1002/dneu.22542 (2018).
- 90 Greenway, M. J. *et al.* A novel candidate region for ALS on chromosome 14q11.2. *Neurology* **63**, 1936-1938, doi:10.1212/01.wnl.0000144344.39103.f6 (2004).
- 91 Greenway, M. J. *et al.* ANG mutations segregate with familial and 'sporadic' amyotrophic lateral sclerosis. *Nat Genet* **38**, 411-413, doi:10.1038/ng1742 (2006).
- 92 McLaughlin, R. L. *et al.* Angiogenin levels and ANG genotypes: dysregulation in amyotrophic lateral sclerosis. *PLoS One* **5**, e15402, doi:10.1371/journal.pone.0015402 (2010).
- 93 Padhi, A. K. *et al.* Insights into the role of ribonuclease 4 polymorphisms in amyotrophic lateral sclerosis. *Journal of biomolecular structure & dynamics* **37**, 116-130, doi:10.1080/07391102.2017.1419147 (2019).

- 94 Padhi, A. K. & Gomes, J. A molecular dynamics based investigation reveals the role of rare Ribonuclease 4 variants in amyotrophic lateral sclerosis susceptibility. *Mutation research* **813**, 1-12, doi:10.1016/j.mrfmmm.2018.11.002 (2019).
- 95 Padhi, A. K., Narain, P. & Gomes, J. Rare Angiogenin and Ribonuclease 4 variants associated with amyotrophic lateral sclerosis exhibit loss-of-function: a comprehensive in silico study. *Metabolic brain disease* **34**, 1661-1677, doi:10.1007/s11011-019-00473-6 (2019).
- 96 Lyons, S. M., Fay, M. M., Akiyama, Y., Anderson, P. J. & Ivanov, P. RNA biology of angiogenin: Current state and perspectives. *RNA Biol* **14**, 171-178, doi:10.1080/15476286.2016.1272746 (2017).
- 97 Rashad, S., Niizuma, K. & Tominaga, T. tRNA cleavage: a new insight. *Neural Regen Res* **15**, 47-52, doi:10.4103/1673-5374.264447 (2020).
- 98 Westra, H. J. *et al.* Systematic identification of trans eQTLs as putative drivers of known disease associations. *Nat Genet* **45**, 1238-1243, doi:10.1038/ng.2756 (2013).
- 99 Kirby, J. *et al.* Lack of unique neuropathology in amyotrophic lateral sclerosis associated with p.K54E angiogenin (ANG) mutation. *Neuropathol Appl Neurobiol* **39**, 562-571, doi:10.1111/nan.12007 (2013).
- 100 Krivinko, J. M. *et al.* Synaptic Proteome Compensation and Resilience to Psychosis in Alzheimer's Disease. *Am J Psychiatry* **175**, 999-1009, doi:10.1176/appi.ajp.2018.17080858 (2018).
- 101 Pollock, B. G. *et al.* A double-blind comparison of citalopram and risperidone for the treatment of behavioral and psychotic symptoms associated with dementia. *Am J Geriatr Psychiatry* **15**, 942-952 (2007).
- 102 Pollock, B. G. *et al.* A randomized, double-blind, placebo-controlled comparison of citalopram and perphenazine for the acute treatment of psychosis and behavioral disturbances associated with dementia. *American Journal of Psychiatry* **159**, 460-465 (2002).
- 103 Murray, P. S., Kumar, S., DeMichele-Sweet, M. A. & Sweet, R. A. Psychosis in Alzheimer's Disease. *Biol Psychiatry* **75**, 542-552 (2014).
- 104 Stern, Y. Cognitive reserve in ageing and Alzheimer's disease. *Lancet Neurol* **11**, 1006-1012, doi:10.1016/s1474-4422(12)70191-6 (2012).
- 105 Outeiro, T. F. *et al.* Dementia with Lewy bodies: an update and outlook. *Mol Neurodegener* **14**, 5, doi:10.1186/s13024-019-0306-8 (2019).
- 106 Cook, S. E. *et al.* Psychotic symptoms in Alzheimer disease: evidence for subtypes. *Am. J. Geriatr. Psychiatry* **11**, 406-413 (2003).

## Figure Legends

**Figure 1. SNP associations with psychosis in AD. A. Manhattan plot.** The x axis shows genomic position for autosomes and the X chromosome. The y axis shows statistical significance as  $-\log_{10}(P)$ . Each point represents an analyzed SNP. The dashed line represents the threshold for genome-wide significance ( $p = 5 \times 10^{-8}$ ). **B-C. Zoom plots of the two genome-wide significant loci.** The x axis shows genomic position. The left y axis shows statistical significance as  $-\log_{10}(P)$ . Each point represents an analyzed SNP, coded by degree of linkage disequilibrium relative to the most significant SNP within the locus. Recombination rate through the region is shown on the right y axis. LD: linkage disequilibrium; cM: centimorgans; Mb: megabase

**Table 1A. Subject Characteristics.**

	<b>AD-P</b> 6,872 (55.8%) <b>N (%) or Mean (SD)</b>	<b>AD+P</b> 5,445 (44.2%) <b>N (%) or Mean (SD)</b>	<b>Total</b> 12,317 (100.0%) <b>N (%) or Mean (SD)</b>
<b>Female</b>	4,008 (58.3)	3,649 (67.0)	7,657 (62.2)
<b>Age of Onset<sup>1</sup></b>	74 (8.3)	73.4 (8.0)	73.8 (8.2)
<b>Age at Consent</b>	75.6 (7.0)	77.0 (6.9)	76.2 (7.0)
<b>Age at Last Visit<sup>1</sup></b>	80.5 (8.1)	81.3 (7.7)	80.9 (7.9)
<b>Last MMSE<sup>1</sup></b>	16.0 (6.5)	13.7 (6.8)	15.0 (6.8)
<b>Last CDR<sup>1</sup></b>			
0.0	2 (0.0)	5 (0.1)	7 (0.1)
0.5	244 (3.8)	186 (3.8)	430 (3.8)
1.0	2,469 (38.4)	967 (19.6)	3,436 (30.2)
2.0	1,560 (24.3)	1,586 (32.2)	3,146 (27.7)
3.0	986 (15.3)	1,340 (27.2)	2,326 (20.5)
4.0	759 (11.8)	482 (9.8)	1,241 (10.9)
5.0	410 (6.4)	363 (7.4)	773 (6.8)

AD-P: Alzheimer disease without psychosis; AD+P: Alzheimer disease with psychosis; MMSE: Mini mental state exam; CDR: CDR® Dementia Staging Instrument; <sup>1</sup>Data not available for some subjects/source programs; see **Supplementary Tables 3-10** for details.

**Table 1B. Sample size for each cohort contributing to the meta-analysis.**

<b>GWA</b>	<b>Phase 1</b>		<b>Phase 2</b>		<b>GR@ACE</b>		<b>NEXGENS</b>		<b>Total</b>	
	<b>AD-P</b>	<b>AD+P</b>	<b>AD-P</b>	<b>AD+P</b>	<b>AD-P</b>	<b>AD+P</b>	<b>AD-P</b>	<b>AD+P</b>	<b>AD-P</b>	<b>AD+P</b>
ALL	3529	3525	1045	495	1646	762	652	663	6872	5445
EUR	2665	2732	833	394	1646	762	652	663	5796	4551

GWA: Genome-wide association; AD-P: Alzheimer disease without psychosis; AD+P: Alzheimer disease with psychosis; EUR: European ancestry

**Table 2. Genetic correlations ( $r_g$ ) of psychosis in Alzheimer disease with selected relevant phenotypes.** Correlations were obtained from LD Hub.<sup>66</sup> Phenotypes in bold were chosen, a priori, based on phenotypic or genetic (schizophrenia, bipolar disorder) analyses.

Phenotype	$r_g$	Se	z	p-value
<b>Alzheimer disease</b>	-0.374	0.321	-1.168	0.243
Amyotrophic lateral sclerosis	-0.307	0.300	-1.021	0.307
Parkinson disease	0.142	0.186	0.763	0.446
<b>Years of schooling</b>	-0.312	0.111	-2.816	0.005
Intelligence	-0.200	0.121	-1.650	0.099
<b>Schizophrenia</b>	-0.094	0.081	-1.164	0.244
<b>Depressive symptoms</b>	0.327	0.141	2.316	0.021
Bipolar disorder	-0.287	0.145	-1.976	0.048

#### URLs

METAL <http://csg.sph.umich.edu/abecasis/metal/index.html>

GemTools <http://www.compgen.pitt.edu/GemTools/GemTools.htm>

PLINK <https://www.cog-genomics.org/plink2/>

NCBI RS names [https://ftp.ncbi.nih.gov/snp/redesign/latest\\_release/VCF/](https://ftp.ncbi.nih.gov/snp/redesign/latest_release/VCF/)

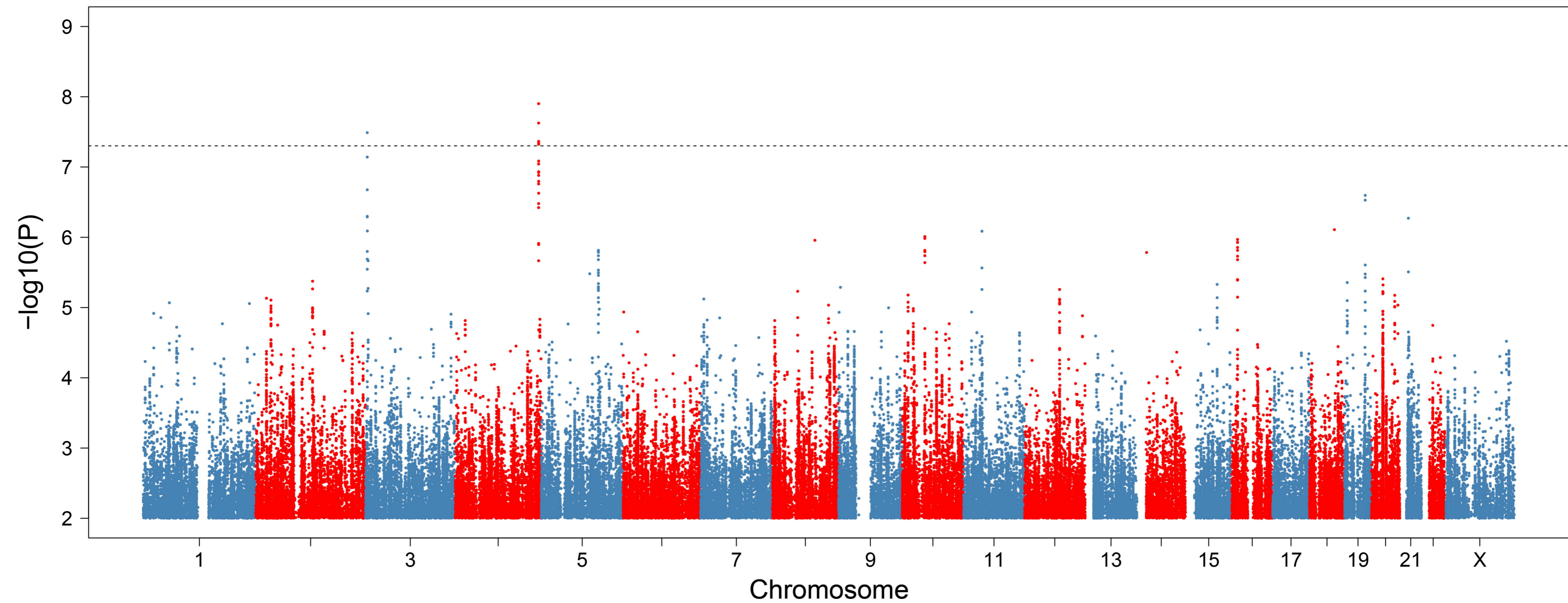
LD-Hub: <http://ldsc.broadinstitute.org/ldhub/>

Sanger Imputation Service: <https://imputation.sanger.ac.uk>

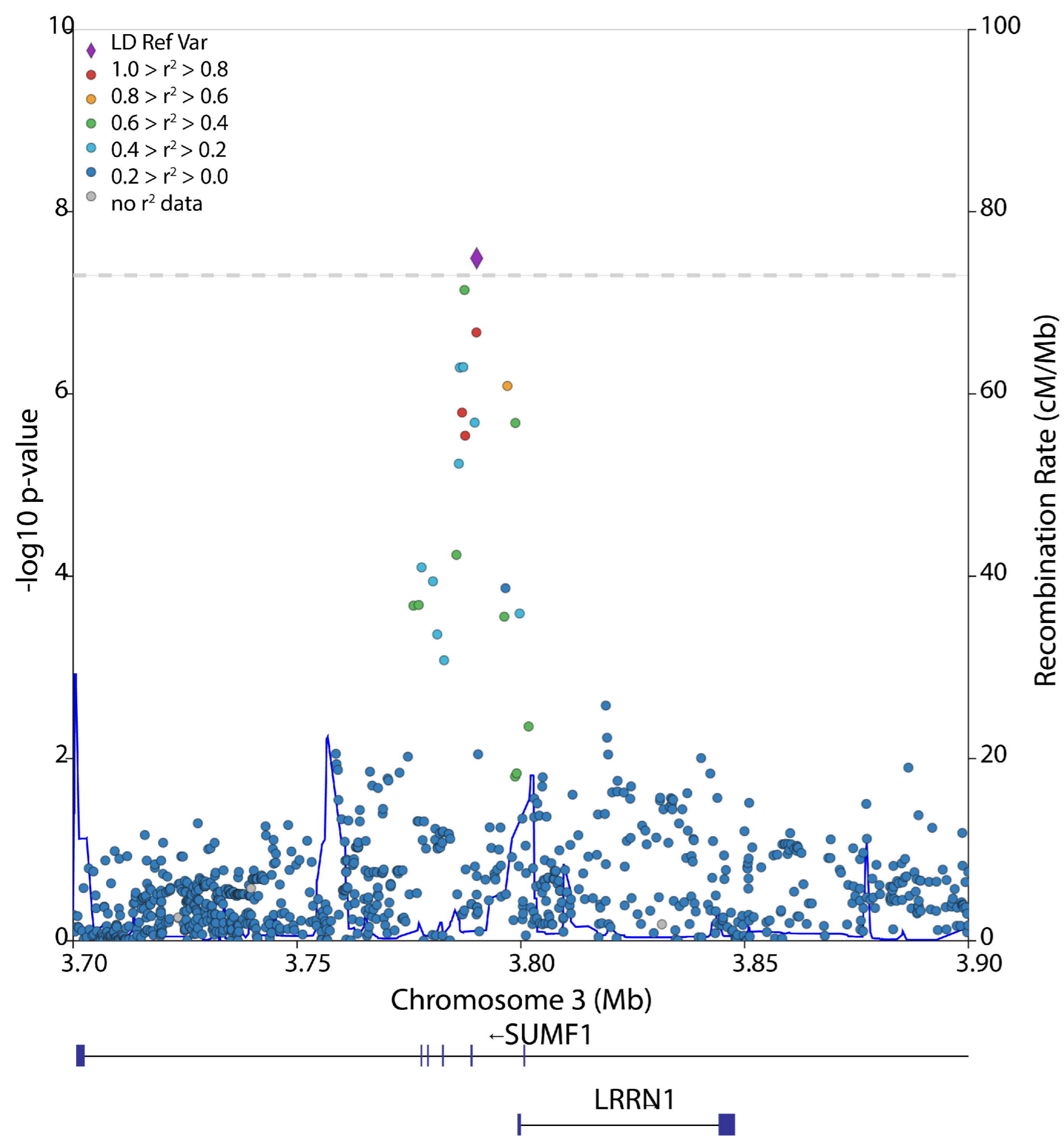
Psychiatric Genetics Consortium: <https://www.med.unc.edu/pgc/>

Imputation preparation: <https://www.well.ox.ac.uk/~wrayner/tools/>

CMC/AMP-AD eQTL Meta-analysis: <https://www.synapse.org/#!Synapse:syn16984815>

**A**

medRxiv preprint doi: <https://doi.org/10.1101/2020.08.07.20139261>; this version posted August 11, 2020. The copyright holder for this preprint (which was not certified by peer review) is the author/funder, who has granted medRxiv a license to display the preprint in perpetuity. It is made available under a [CC-BY-NC-ND 4.0 International license](https://creativecommons.org/licenses/by-nc-nd/4.0/).

**B****C**