



## 23 **Abstract**

24 Objectives: To improve understanding of transition from viral infection to viral clearance, and  
25 antibody response in pediatric patients with SARS-CoV-2 infection.

26 Study design: This retrospective analysis of children tested for SARS-CoV-2 by RT-PCR and IgG  
27 antibody at a quaternary-care, free-standing pediatric hospital between March 13<sup>th</sup>, 2020 to  
28 June 21<sup>st</sup>, 2020 included 6369 patients who underwent PCR testing and 215 patients who  
29 underwent antibody testing. During the initial study period, testing focused primarily on  
30 symptomatic children; the later study period included asymptomatic patients who underwent  
31 testing as preadmission or preprocedural screening. We report the proportion of positive and  
32 negative tests, time to viral clearance, and time to seropositivity.

33 Results: The rate of positivity varied over time due to viral circulation in the community and  
34 transition from targeted testing of symptomatic patients to more universal screening of  
35 hospitalized patients. Median duration of viral shedding (RT-PCR positivity) was 19.5 days and  
36 RT-PCR negativity from positivity was 25 days. Of note, patients aged 6 to 15 years  
37 demonstrated a longer period of RT-PCR negativity from positivity, compared to patients aged  
38 16 to 22 years (median=32 versus 18 days,  $p=0.015$ ). Median time to seropositivity from RT-PCR  
39 positivity was 18 days while median time to reach adequate levels of neutralizing antibodies  
40 (defined as equivalent to 160 titer) was 36 days.

41 Conclusions: The majority of patients demonstrated a prolonged period of viral shedding after  
42 infection with SARS CoV-2. Whether this correlates with persistent infectivity is unknown. Only  
43 17 of 33 patients demonstrated neutralizing antibodies, suggesting that some patients may not  
44 mount significant immune responses to infection. It remains unknown if IgG antibody

45 production correlates with immunity and how long measurable antibodies persist and protect  
46 against future infection.

47

48

49

50

51

52

53

54

55

56

57

58

59

60

61

62

63

64

65

66

## 67 Introduction

68 In December 2019, a series of severe acute respiratory syndrome (SARS) cases caused by a  
69 novel strain of coronavirus (CoV), believed to have originated from bats, was described in  
70 Wuhan, Hubei province of China.<sup>1</sup> The pathogen demonstrated a significant degree of genetic  
71 homology to the SARS virus from the 2002-2004 outbreak. The virus strain was dubbed SARS-  
72 CoV-2 and the disease was named coronavirus disease 2019 (COVID-19). A pandemic was  
73 declared by the World Health Organization (WHO) on March 11, 2020 after the number of  
74 affected cases had increased significantly and the disease was observed in more than 100  
75 countries.<sup>2</sup>

76

77 SARS-CoV-2 has similar structural proteins present in other CoVs, consisting of S (spike), E  
78 (envelope), M (membrane), and N (nucleocapsid) components.<sup>3, 4</sup> Of these glycoproteins, virus-  
79 cell fusion of SARS-CoV-2 is mediated by the trimeric structure of the two functional subunits of  
80 the S protein, namely S1 and S2, after binding to angiotensin-converting enzyme 2 (ACE2).<sup>5</sup>  
81 Antibodies formed against the receptor binding domain (RBD) on the S1 subunit have the  
82 potential to neutralize SARS-CoV-2 by disabling virus-ACE2 binding and endocytosis.<sup>6, 7</sup> In  
83 addition, the competitive RBD binding capacity of these antibodies versus ACE2 correlates with  
84 neutralizing activity.<sup>6</sup>

85

86 Dong *et al.* reported the first epidemiological results on 728 children with laboratory-confirmed  
87 COVID-19 from China.<sup>8</sup> The authors found that the median age was seven years, greater than  
88 90% of the cases had a disease spectrum ranging from asymptomatic to moderate disease, and

89 the proportion of severe and critical cases increased with age.<sup>8</sup> Similar findings have  
90 subsequently been reported from Europe, the middle east, and the US.<sup>9-12</sup>

91  
92 Although there is emerging data regarding timing of viral clearance and immunological  
93 response in adults with COVID-19<sup>13</sup>, there is a scarcity of data in the pediatric population.  
94 Furthermore, a lack of knowledge regarding factors affecting time-to-seropositivity is observed  
95 in both pediatric and adult patients.<sup>14</sup> We report viral and antibody testing results from our  
96 pediatric patient population in order to contribute to a better understanding of timing of viral  
97 clearance and antibody production in children with COVID-19.

98  
99 **Methods**

100 From March 13<sup>th</sup>, 2020 to June 21<sup>st</sup>, 2020, all patients presenting to our institution (Children's  
101 National Hospital, Washington, DC) who were aged  $\leq 22$  years and had been tested for SARS-  
102 CoV-2 by reverse transcription polymerase chain reaction (RT-PCR) were included in the study.  
103 Data were extracted from our laboratory information systems data warehouse (Sunquest  
104 Information Systems Database [Tucson, AZ, USA] and Vertica Analytics Platform [Cambridge,  
105 MA]) using Viewics Analytics Platform (Roche, Indianapolis, IN) with Structured Query Language  
106 (SQL) queries. Extracts were merged into CSV files and imported into RStudio IDE (Boston, MA).  
107 In addition to the RT-PCR results, qualitative and quantitative serologic testing results, age and  
108 sex were also included in the data extracts. Age stratifications were defined as 0 to 5 years, 6 to  
109 15 years and 16 to 22 years (see supplemental figure S1 for kernel density estimate of age).

110

111 Nasopharyngeal samples were collected from patients. Samples were transferred to the  
112 laboratory in viral transport medium as recommended by the manufacturer or in liquid Amies  
113 medium as validated by the laboratory. For detection of the virus by RT-PCR, four systems were  
114 utilized due to high testing volume, which were (1) GenMark ePlex SARS-CoV-2 Test, (2)  
115 DiaSorin Molecular Simplexa™ COVID-19 Direct Assay System, (3) Cepheid Xpert® Xpress-SARS-  
116 CoV-2 and (4) Seegene Allplex™ 2019-nCoV RT-PCR Assay. All were validated in our laboratory  
117 and considered equivalent for patient testing. Viral clearance was deemed as RT-PCR negativity.

118  
119 The GenMark ePlex SARS-CoV-2 Test is an automated qualitative nucleic acid test that aids in  
120 the detection of SARS-CoV-2 and diagnosis of COVID-19 using The True Sample-to-Answer  
121 Solution™ ePlex instrument. The test is based on nucleic acid amplification technology and each  
122 test cartridge includes all reagents needed to extract, amplify and detect SARS-CoV-2 RNA in  
123 nasopharyngeal swab samples.<sup>15</sup>

124  
125 The DiaSorin Molecular Simplexa™ COVID-19 Direct Assay System is a real-time RT-PCR system  
126 that enables the direct amplification of Coronavirus SARS-CoV-2 RNA from nasopharyngeal  
127 swabs. Fluorescent probes are used together with corresponding forward and reverse primers  
128 to amplify SARS-CoV-2 viral RNA and internal control RNA. The assay targets two different  
129 regions of the SARS-CoV-2 genome, ORF1ab and S gene. The S gene encodes the spike  
130 glycoprotein of the SARS-CoV-2 and is also targeted to specifically detect the presence of SARS-  
131 CoV-2. The ORF1ab region encodes well-conserved non-structural proteins and therefore is less

132 susceptible to recombination. An RNA internal control is used to detect RT-PCR failure and/or  
133 inhibition.<sup>15</sup>

134  
135 The Cepheid Xpert® Xpress-SARS-CoV-2 is a real-time RT-PCR assay designed to detect SARS-  
136 CoV-2 nucleic acids from upper respiratory samples. Specific molecular targets include the E  
137 and N2 genes. The GeneXpert platform utilizes a closed cartridge system which does not  
138 require separate extraction or processing steps prior to introduction of the sample and can  
139 yield rapid results within 30 minutes. Each cartridge contains internal sample processing and  
140 probe check controls.<sup>15</sup>

141  
142 The Seegene Allplex™ 2019-nCoV RT-PCR Assay detects SARS-CoV-2 nucleic acids in upper  
143 respiratory samples. The probes are designed to target the E, N, and RdRp (RNA-dependent  
144 RNA polymerase) genes. A separate nucleic acid extraction step is required prior to  
145 amplification via real-time PCR. High throughput analysis is enabled through use of 96-well  
146 plates. Internal positive and negative controls are used to confirm the validity of each PCR  
147 run.<sup>15</sup>

148  
149 Antibody detection was performed from serum or plasma samples, collected in appropriate  
150 separator tubes, using DiaSorin Liaison XL SARS-CoV-2 IgG S1/S2 assay (DiaSorin, Saluggia, Italy).  
151 We validated the analytical and clinical performance of this assay with similar outcomes as  
152 other researchers who previously reported satisfactory results.<sup>16, 17</sup> The test is based on  
153 chemiluminescent detection of antibodies against S1 and S2 glycoproteins of the virus using

154 magnetic beads. Seropositivity was defined at presence of anti-SARS-CoV-2 IgG antibodies  $\geq 15$   
155 absorbance units per milliliters (AU/mL), as recommended by the manufacturer. In addition to  
156 the qualitative results, quantitative test results were also included to reflect the amount of  
157 circulating IgG antibodies in patient samples at the time of blood draw. As demonstrated by the  
158 manufacturer, antibody results  $\geq 80$  AU/mL were comparable to a titer of 160 by plaque  
159 reduction neutralization testing (Liaison SARS-CoV-2 S1/S2 IgG (REF 311450)). According to  
160 these criteria, results were grouped as 'adequate for neutralization' and 'not adequate for  
161 neutralization', based on the 80 AU/mL threshold. In addition to routine testing ordered by  
162 clinical providers (n=194), we retrieved available leftover serum or plasma samples from  
163 patients who underwent RT-PCR testing but were not tested for antibodies (n=19). Serologic  
164 testing was also performed on these samples and their results were included in the present  
165 study.

166  
167 Statistical analyses were performed using R software (R foundation for Statistical Computing,  
168 version 4.0.0). Survival (version 3.2-3) and SurvMiner (version 0.4.7) packages were utilized for  
169 nonparametric estimation of time to event function. Interval censoring was present since  
170 timing of symptom onset was not included as a variable (left censoring) and patients were  
171 tested at the discretion of the healthcare provider and exact event times could not be obtained  
172 (right censoring). Follow-up time for patients included RT-PCR positivity duration (censored  
173 time), initial RT-PCR positivity to RT-PCR negativity (event time), initial RT-PCR positivity to  
174 seronegativity (censored time) and initial RT-PCR positivity to seropositivity (event time). These



175 time points were utilized in event probability estimates using the Kaplan-Meier method and  
176 Peto & Peto modification of the Gehan-Wilcoxon test for comparison of groups.

177  
178 Statistical significance was defined at a p-value of <0.05. Bonferroni adjustments were made to  
179 p-values for pairwise comparisons. Results were expressed in mean  $\pm$  standard deviation (SD),  
180 median and 1<sup>st</sup> and 3<sup>rd</sup> interquartile ranges (IQR) or minimum (min) and maximum (max), and  
181 with 95 percent confidence intervals (95% CI), as appropriate.

182  
183 This project was undertaken as a quality improvement initiative at Children’s National Hospital  
184 and therefore does not constitute human research. As such, it was not under the oversight of  
185 the institutional review board. This manuscript was evaluated and approved by the institutional  
186 publication review committee.

187

## 188 **Results**

189 The total number of RT-PCR tests performed over the 100-day period was 7958 with 641  
190 positive and 7317 negative test results (Figure 1). Figure 2 shows the number of patients at  
191 each stage of the study. Five hundred and ninety-two (592) patients tested positive with a  
192 median test of one per patient (max = 6). Five thousand seven hundred and seventy-seven  
193 (5777) patients tested negative with a median test of 1 per patient (min = 1, max = 15). Two  
194 hundred and thirty-eight (238) serology tests were performed with 69 positive and 169  
195 negative test results. Overall, 58 patients tested positive with a median of one test per patient  
196 (max = 2) and 157 patients tested negative with a median test of one per patient (max = 5).

197  
198 Sixty-eight (68) patients had more than one molecular test performed. The median duration of  
199 viral shedding (RT-PCR positivity) was 19.5 days (IQR = 12-39) with 10 patients demonstrating a  
200 duration greater than 30 days (max = 62 days). The median time to RT-PCR negativity from RT-  
201 PCR positivity was 25 days (95% CI=22-34) (Figure 3a). No difference was found between  
202 females (median = 26 days) and males (median = 25 days) for time to RT-PCR negativity ( $\chi^2=0$ ,  
203  $p=1$ ) (Figure 3b), however, statistical significance was found between age groups ( $\chi^2=7.4$ ,  
204  $p=0.02$ ). Patients aged 6 to 15 years took longer to achieve RT-PCR negativity (median = 32  
205 days) compared to those who were 16 to 22 years of age (median=18 days) ( $p=0.015$ ) (Figure  
206 3c). Patients in the 0 to 5 year age group required a median of 22 days to become RT-PCR  
207 negative but pairwise comparisons of this group with other groups were not significant (vs 6 to  
208 15 years:  $p=0.76$ ; vs 16 to 22 years:  $p=0.52$ ). After adjustment for sex, time to RT-PCR was found  
209 to be longer only for females ( $n = 10$ , median = 44 days) in this age group since males ( $n = 19$ ) in  
210 the same age cohort demonstrated a median period of 25.5 days ( $p=0.02$ ). Comparison of time  
211 to RT-PCR negativity for males aged 6 to 15 years with other groups were not significant (all  
212  $p>0.05$ ).

213  
214 The median time to seropositivity from RT-PCR positivity was 18 days (95% CI=12-31) (Figure  
215 4a). No difference in time to seropositivity was found between females (median = 18 days) and  
216 males (median = 21 days) ( $\chi^2=0.8$ ,  $p=0.4$ ) (Figure 4b). The median number of days for  
217 seroconversion from initial RT-PCR positivity was 29 days for the 0 to 5 year group, 11 days for  
218 the 6 to 15 year group, and 24 days for the 16 to 22 year group. However, overall comparison of

219 age groups did not demonstrate a significant difference ( $\chi^2=1.6$ ,  $p=0.4$ ) (Figure 4c). After  
220 adjustment for sex, the various age groups also did not demonstrate significant differences in  
221 time to seropositivity ( $\chi^2=0.6$ ,  $p=0.7$ ). Only 17 of 33 patients demonstrated antibody levels  $\geq 80$   
222 AU/mL. The median time to reach adequate levels of neutralizing antibodies as defined by the  
223 manufacturer and this study was 36 days (95% CI=18-NA) (Figure 5a). No significance was found  
224 for sex ( $\chi^2=1.1$ ,  $p=0.3$ ) (Figure 5b), age ( $\chi^2=0.9$ ,  $p=0.6$ ), or age stratified for sex ( $\chi^2=1.7$ ,  $p=0.4$ )  
225 (Figure 5c).

226

## 227 **Discussion**

228 In this study, we demonstrated that IgG class antibodies directed against S1 and S2  
229 glycoproteins could be detected in blood samples of children before viral clearance. Previous  
230 studies revealed that antibodies bound to the RBD epitope of SARS-CoV-2's S1 glycoprotein are  
231 able to disrupt the virus-ACE2 interaction, thus blocking viral entry into human cells and  
232 enabling neutralizing capacity to the antibodies.<sup>6</sup> While the RBD is located on the S1 subunit,  
233 the S2 subunit plays a crucial role in membrane fusion of the virus by conformation changes.<sup>18,</sup>  
234 <sup>19</sup> It was previously hypothesized for SARS-CoV that multiple antibodies targeting different  
235 epitopes might act synergistically.<sup>20, 21</sup> As noted earlier, the antibody detection assay utilized in  
236 this study does not measure only antibodies targeting RBD but includes all antibodies to  
237 epitopes on S1 and S2 glycoproteins. We believe that this assay design may be beneficial in  
238 assessing antibody response in individuals with a polyclonal immune response to both S1 and  
239 S2 antigens with synergistic anti-viral activity.

240

241 Most of the SARS-CoV-2 literature related to viral kinetics focuses on moderate to severe adult  
242 cases of COVID-19. Han *et al.* observed 12 children with mild or asymptomatic COVID-19 and  
243 reported gradual viral load decrease in nasopharyngeal samples from 100% to 55% positivity  
244 over three weeks,<sup>22</sup> a finding which is comparable to our median period of 25 days for  
245 achieving nasopharyngeal RT-PCR negativity. Fafi-Kremer *et al.* reported immunological  
246 responses of 160 health care workers with mild or subclinical COVID-19 and demonstrated that  
247 even mild cases were usually, but not always, characterized by formation of neutralizing  
248 antibodies with an increase in neutralization activity over time.<sup>23</sup> The authors reported that the  
249 variables associated with high neutralizing activity in a multivariate model included time to  
250 blood sampling from symptom onset, high BMI and male sex.<sup>23</sup> We demonstrated that females  
251 between the ages of 6 to 15 years required a longer period for viral clearance when compared  
252 to other groups. This may be due to the age-dependent expression of ACE2 in the nasal  
253 epithelium, as demonstrated by Bunyavanich *et al.*, where ACE2 gene expression was found to  
254 be significantly higher in older children (10 to 17 years) compared to younger children (< 10  
255 years).<sup>24</sup> Furthermore, it was suggested that gonadal hormones play a role in ACE2 expression  
256 and function.<sup>25</sup> Taken together, increased duration of SARS-CoV-2 in the nasopharyngeal area  
257 could be caused by hormonal changes in adolescent females in this age group. As noted by  
258 Chun *et al.*,<sup>26</sup> different sections of the airway feature variable expression of ACE2, and  
259 prolonged presence of the viral genome in the upper respiratory tract may not correlate with  
260 the severity of COVID-19.  
261

262 A strength of our study was the inclusion of patients from multiple pediatric age groups with  
263 sequential PCR testing, which allowed comparison between age groups and sex. One patient  
264 still demonstrated RT-PCR positivity 62 days after the initial positive result. Results of serial  
265 testing in pediatric patients have only been rarely reported in the literature to date. In a case  
266 series of 50 children, only four had repeat testing performed, and one patient demonstrated  
267 continued positivity 27 days after initial RT-PCR testing.<sup>27</sup> In the adult population, retrospective  
268 evaluation of 191 adult patients from Wuhan reported the longest duration of viral shedding to  
269 be 37 days with a median of 20 days.<sup>28</sup> It should be noted that detection of viral particles by  
270 molecular testing may not correlate with viable virus and transmissibility.<sup>29</sup>

271  
272 For COVID-19, antibody competition with ACE2, the intended target of SARS-CoV-2, and binding  
273 affinity of the antibody for RBD are critical to neutralization of the virus.<sup>6</sup> We demonstrated  
274 that the virus can still be detected in nasopharyngeal samples with low levels of circulating  
275 antibody but it becomes undetectable when levels reach neutralizing levels. This suggests that  
276 quantitative antibody results may be more useful for clinical management of patient. The U.S.  
277 Food and Drug Administration (FDA) has granted Emergency Use Authorization (EUA) to  
278 multiple viral and serologic tests for diagnosis and management of COVID-19.<sup>15</sup> However,  
279 serologic assays for SARS-CoV-2 are still in early phases of development. As of July 26, 2020, no  
280 commercial assay was approved by FDA for quantitative reporting of the results.<sup>15</sup> In the  
281 present study, we showed that time to reach a quantitative result corresponding to an antibody  
282 titer of 160 was associated with time to viral clearance. This titer level has also been  
283 recommended by the FDA to identify potential convalescent plasma donors. However, it has

284 been observed that in the setting of other viral infections that seropositivity or antibody  
285 response may not correlate to immunity to the virus and that disease progression or reinfection  
286 is still possible. Tang *et al.* reported that humoral immunity mounted against SARS-CoV  
287 gradually decreased over time and disappeared due to the lack of peripheral memory B cell  
288 response in most individuals.<sup>30</sup>

289

## 290 Limitations

291 This study has a number of limitations which include its retrospective nature and timing of viral  
292 and antibody testing being at the discretion of the ordering provider rather than at defined  
293 time intervals. We have not included symptom onset in our analysis since this project was solely  
294 based on laboratory data evaluation. In addition, the serologic assay used in the study had  
295 94.3% positive and 100% negative agreement with a comparative enzyme-linked  
296 immunosorbent assay. Given the low optimal positive agreement, some false negative test  
297 results are expected.

298

## 299 Conclusions

300 In summary, given the significant volume of testing performed, we provide a timeline of viral  
301 clearance and humoral response to COVID-19 in pediatric patients with additional comparisons  
302 amongst age groups and sex. We demonstrated that females between 6 to 15 years of age  
303 experienced longer persistence of viral genome in nasopharyngeal samples. It should be noted  
304 that presence of viral genome may not correlate with transmissibility. Antibodies were  
305 detectable in low titer preceding viral clearance. The timing of antibodies reaching titers that

306 correlate with potentially neutralizing levels coincided with RT-PCR negativity in  
307 nasopharyngeal samples within a 24 to 25 day period after initial RT-PCR positivity. However,  
308 only approximately 50% (17 of 33 patients) actually achieved this antibody level at some point  
309 in their disease course.

310

### 311 **Funding**

312 None

313

### 314 **Acknowledgements**

315 Authors would like to thank Eric Freeman and Celia Grant, MT(ASCP) for their efforts in this  
316 study.

317

### 318 **References**

- 319 [1] Zhou P, Yang XL, Wang XG, Hu B, Zhang L, Zhang W, et al. A pneumonia outbreak associated  
320 with a new coronavirus of probable bat origin. *Nature*. 2020;579:270-3.
- 321 [2] World Health Organization. WHO Director-General's opening remarks at the media briefing  
322 on COVID-19-11 March 2020. Geneva, Switzerland 2020.
- 323 [3] Chen Y, Liu Q, Guo D. Emerging coronaviruses: Genome structure, replication, and  
324 pathogenesis. *J Med Virol*. 2020;92:418-23.
- 325 [4] Wu C, Liu Y, Yang Y, Zhang P, Zhong W, Wang Y, et al. Analysis of therapeutic targets for  
326 SARS-CoV-2 and discovery of potential drugs by computational methods. *Acta Pharm Sin B*.  
327 2020.
- 328 [5] Walls AC, Park YJ, Tortorici MA, Wall A, McGuire AT, Veesler D. Structure, Function, and  
329 Antigenicity of the SARS-CoV-2 Spike Glycoprotein. *Cell*. 2020;181:281-92 e6.
- 330 [6] Ju B, Zhang Q, Ge J, Wang R, Sun J, Ge X, et al. Human neutralizing antibodies elicited by  
331 SARS-CoV-2 infection. *Nature*. 2020.
- 332 [7] Lan J, Ge J, Yu J, Shan S, Zhou H, Fan S, et al. Structure of the SARS-CoV-2 spike receptor-  
333 binding domain bound to the ACE2 receptor. *Nature*. 2020;581:215-20.
- 334 [8] Dong Y, Mo X, Hu Y, Qi X, Jiang F, Jiang Z, et al. Epidemiology of COVID-19 Among Children in  
335 China. *Pediatrics*. 2020.

- 336 [9] Garazzino S, Montagnani C, Dona D, Meini A, Felici E, Vergine G, et al. Multicentre Italian  
337 study of SARS-CoV-2 infection in children and adolescents, preliminary data as at 10 April 2020.  
338 Euro Surveill. 2020;25.
- 339 [10] Tenforde MW, Billig Rose E, Lindsell CJ, Shapiro NI, Files DC, Gibbs KW, et al. Characteristics  
340 of Adult Outpatients and Inpatients with COVID-19 - 11 Academic Medical Centers, United  
341 States, March-May 2020. MMWR Morb Mortal Wkly Rep. 2020;69:841-6.
- 342 [11] Soltani J, Sedighi I, Shalchi Z, Sami G, Moradveisi B, Nahidi S. Pediatric coronavirus disease  
343 2019 (COVID-19): An insight from west of Iran. North Clin Istanb. 2020;7:284-91.
- 344 [12] DeBiasi RL, Song X, Delaney M, Bell M, Smith K, Pershad J, et al. Severe COVID-19 in  
345 children and young adults in the Washington, DC metropolitan region. The Journal of Pediatrics.  
346 2020.
- 347 [13] Sethuraman N, Jeremiah SS, Ryo A. Interpreting Diagnostic Tests for SARS-CoV-2. JAMA.  
348 2020.
- 349 [14] To KK, Tsang OT, Leung WS, Tam AR, Wu TC, Lung DC, et al. Temporal profiles of viral load  
350 in posterior oropharyngeal saliva samples and serum antibody responses during infection by  
351 SARS-CoV-2: an observational cohort study. Lancet Infect Dis. 2020;20:565-74.
- 352 [15] FDA. Emergency Use Authorizations.
- 353 [16] Tré-Hardy M, Wilmet A, Beukinga I, Dogné J-M, Douxfils J, Blairon L. Validation of a  
354 chemiluminescent assay for specific SARS-CoV-2 antibody. Clinical Chemistry and Laboratory  
355 Medicine (CCLM). 2020;1.
- 356 [17] Plebani M, Padoan A, Negrini D, Carpinteri B, Sciacovelli L. Diagnostic performances and  
357 thresholds: the key to harmonization in serological SARS-CoV-2 assays? Clinica Chimica Acta.  
358 2020.
- 359 [18] Gui M, Song W, Zhou H, Xu J, Chen S, Xiang Y, et al. Cryo-electron microscopy structures of  
360 the SARS-CoV spike glycoprotein reveal a prerequisite conformational state for receptor  
361 binding. Cell Res. 2017;27:119-29.
- 362 [19] Song W, Gui M, Wang X, Xiang Y. Cryo-EM structure of the SARS coronavirus spike  
363 glycoprotein in complex with its host cell receptor ACE2. PLoS Pathog. 2018;14:e1007236.
- 364 [20] ter Meulen J, van den Brink EN, Poon LL, Marissen WE, Leung CS, Cox F, et al. Human  
365 monoclonal antibody combination against SARS coronavirus: synergy and coverage of escape  
366 mutants. PLoS Med. 2006;3:e237.
- 367 [21] Elshabrawy HA, Coughlin MM, Baker SC, Prabhakar BS. Human monoclonal antibodies  
368 against highly conserved HR1 and HR2 domains of the SARS-CoV spike protein are more broadly  
369 neutralizing. PLoS One. 2012;7:e50366.
- 370 [22] Han MS, Seong MW, Kim N, Shin S, Cho SI, Park H, et al. Viral RNA Load in Mildly  
371 Symptomatic and Asymptomatic Children with COVID-19, Seoul. Emerg Infect Dis. 2020;26.
- 372 [23] Fafi-Kremer S, Bruel T, Madec Y, Grant R, Tondeur L, Grzelak L, et al. Serologic responses to  
373 SARS-CoV-2 infection among hospital staff with mild disease in eastern France. medRxiv.  
374 2020:2020.05.19.20101832.
- 375 [24] Bunyavanich S, Do A, Vicencio A. Nasal gene expression of angiotensin-converting enzyme  
376 2 in children and adults. Jama. 2020.
- 377 [25] La Vignera S, Cannarella R, Condorelli RA, Torre F, Aversa A, Calogero AE. Sex-specific SARS-  
378 CoV-2 mortality: among hormone-modulated ACE2 expression, risk of venous



379 thromboembolism and hypovitaminosis d. International journal of molecular sciences.  
380 2020;21:2948.  
381 [26] Chun Y, Do A, Grishina G, Grishin A, Fang G, Rose S, et al. Integrative study of the upper and  
382 lower airway microbiome and transcriptome in asthma. JCI insight. 2020;5.  
383 [27] Zachariah P, Johnson CL, Halabi KC, Ahn D, Sen AI, Fischer A, et al. Epidemiology, Clinical  
384 Features, and Disease Severity in Patients With Coronavirus Disease 2019 (COVID-19) in a  
385 Children’s Hospital in New York City, New York. JAMA Pediatrics. 2020:e202430-e.  
386 [28] Zhou F, Yu T, Du R, Fan G, Liu Y, Liu Z, et al. Clinical course and risk factors for mortality of  
387 adult inpatients with COVID-19 in Wuhan, China: a retrospective cohort study. The lancet. 2020.  
388 [29] Widders A, Broom A, Broom J. SARS-CoV-2: The viral shedding vs infectivity dilemma. Infect  
389 Dis Health. 2020.  
390 [30] Tang F, Quan Y, Xin ZT, Wrammert J, Ma MJ, Lv H, et al. Lack of peripheral memory B cell  
391 responses in recovered patients with severe acute respiratory syndrome: a six-year follow-up  
392 study. J Immunol. 2011;186:7264-8.

393

394

395

396

397

398

399

400

401

402

403

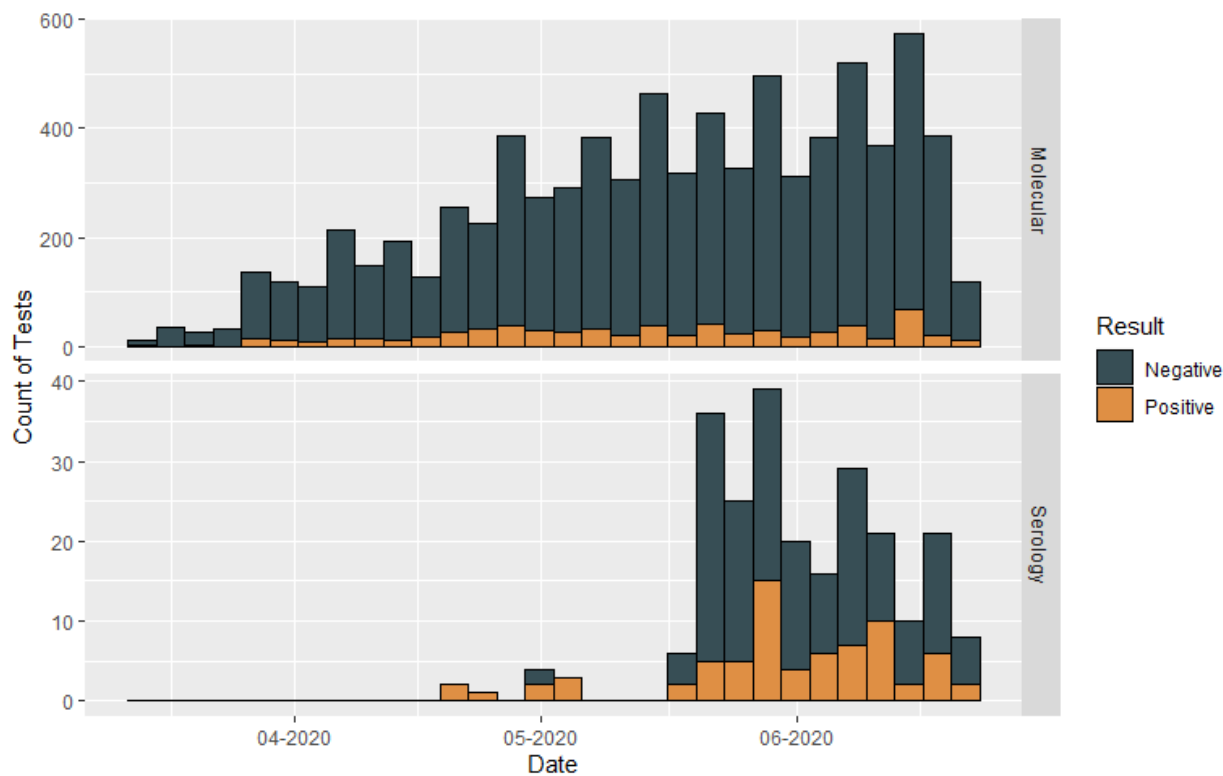
404

405

406

407

408 Figure 1: Number of molecular (RT-PCR) and serology tests performed during the study period



409

410

411

412

413

414

415

416

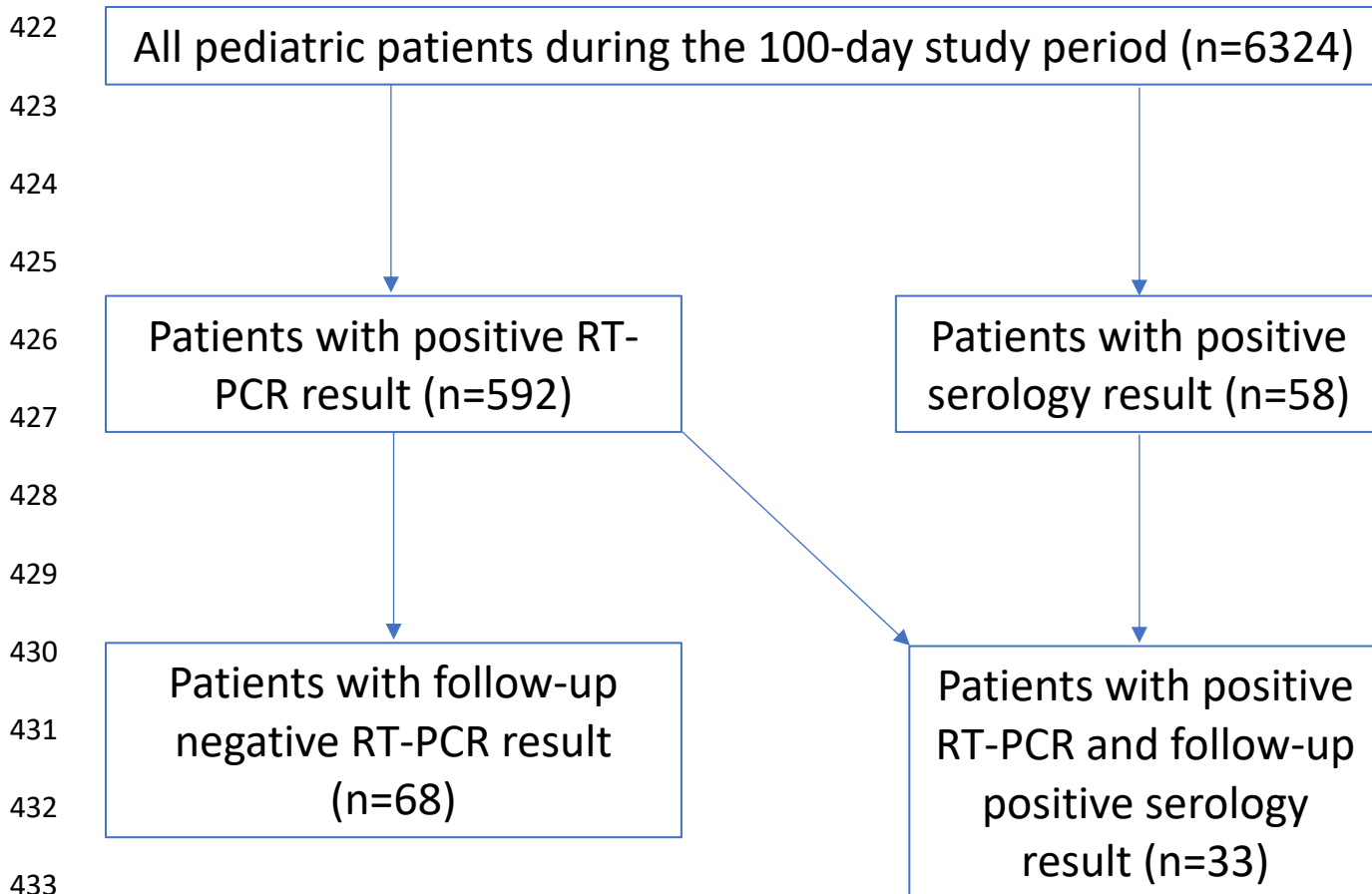
417

418

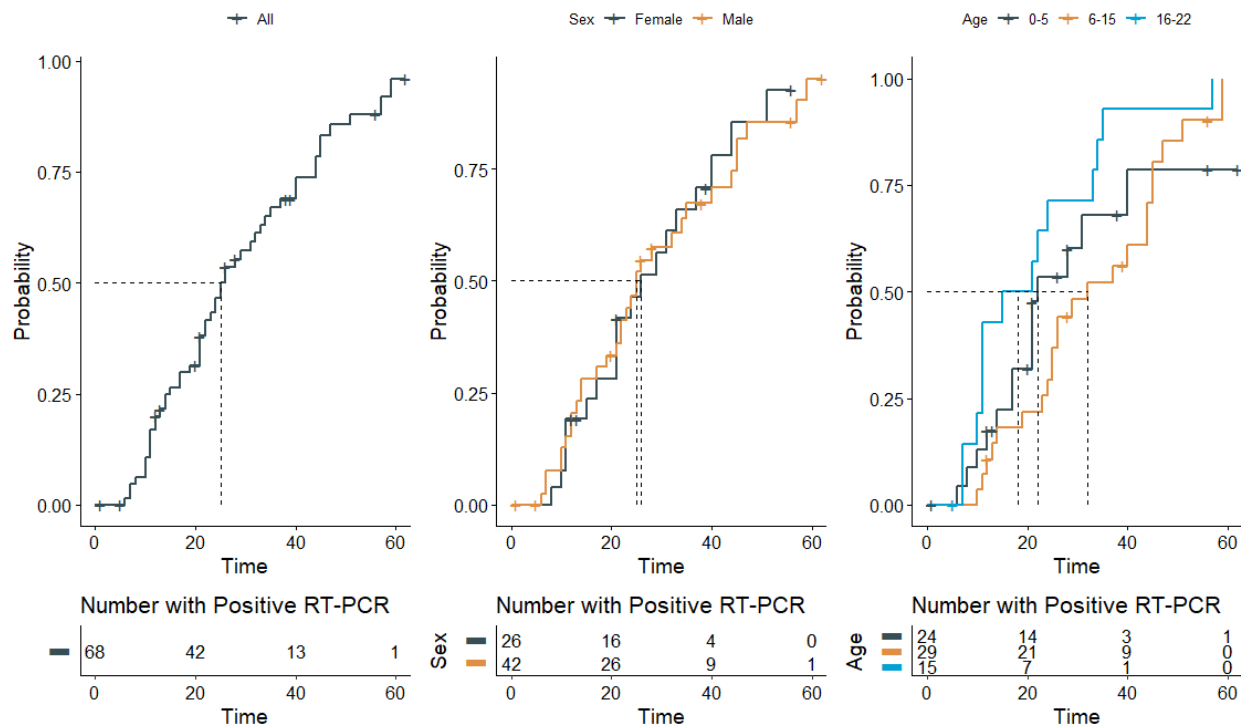
419

420

421 Figure 2: Participant flow in the study



443 Figure 3: Time-to-event curves for RT-PCR positivity to negativity



444

445

446

447

448

449

450

451

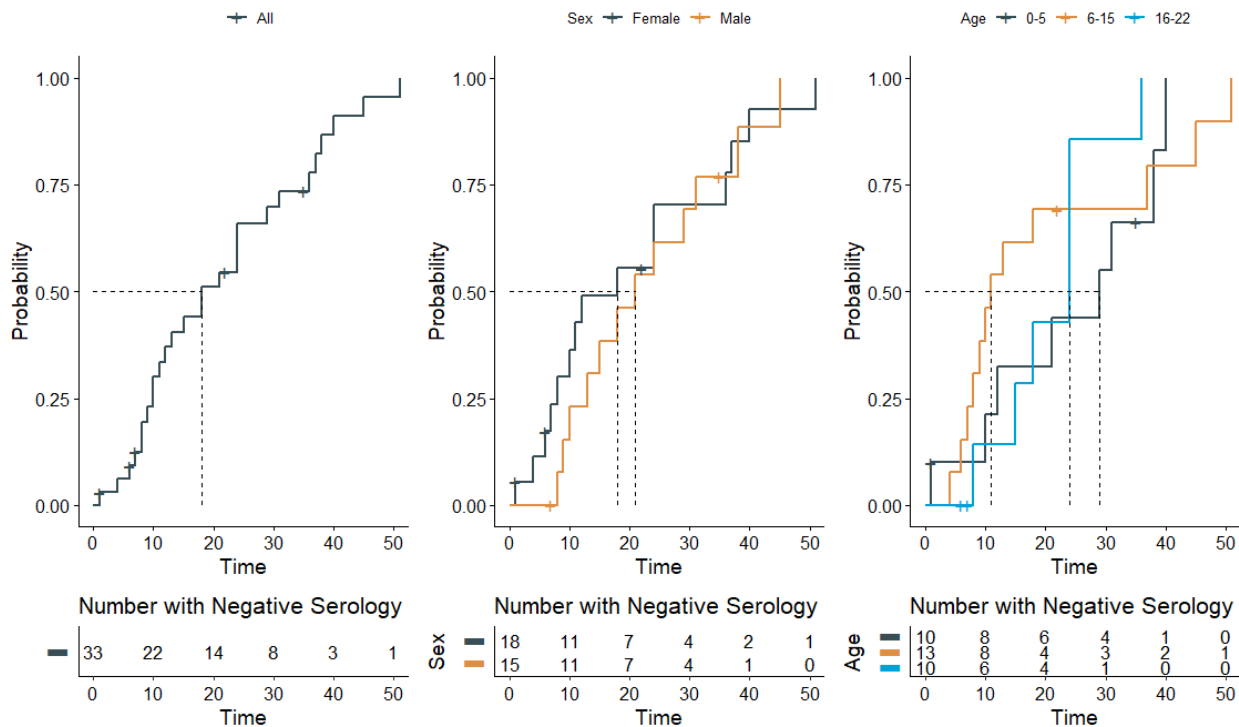
452

453

454

455

456 Figure 4: Time-to-event curves for RT-PCR positivity to seropositivity (Anti-SARS-CoV-2 IgG  
 457 antibody  $\geq 15$  AU/mL)



458

459

460

461

462

463

464

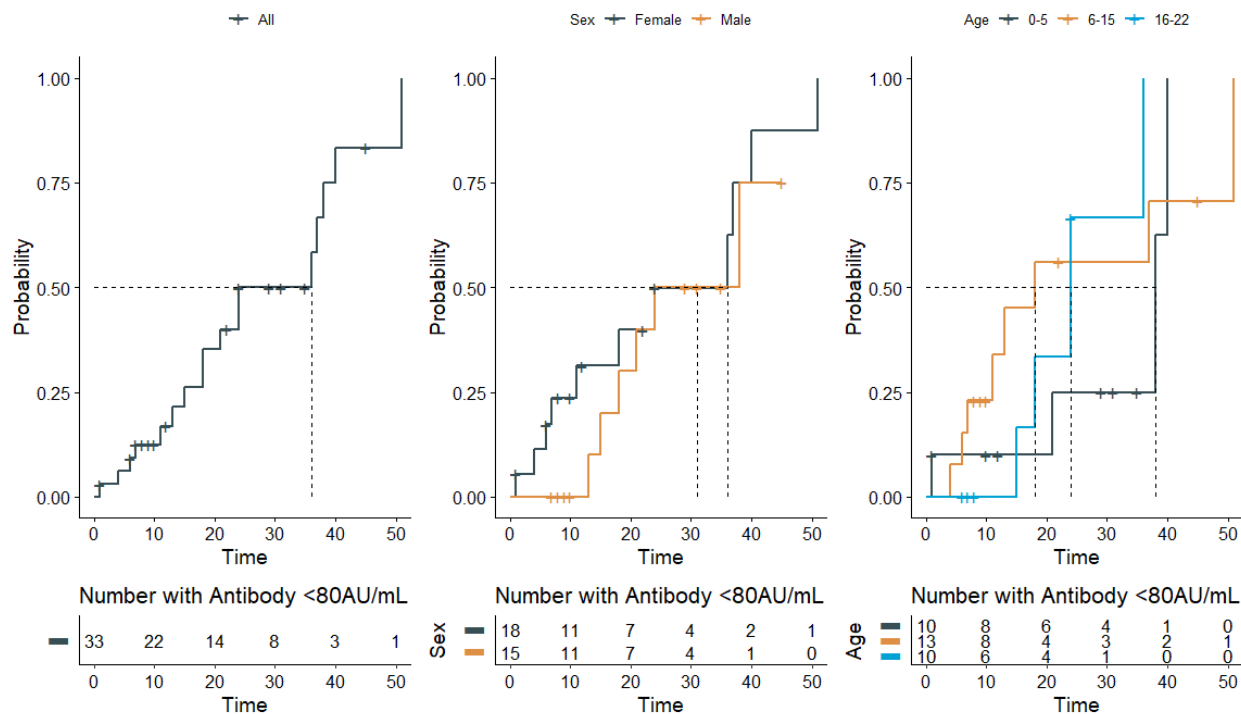
465

466

467

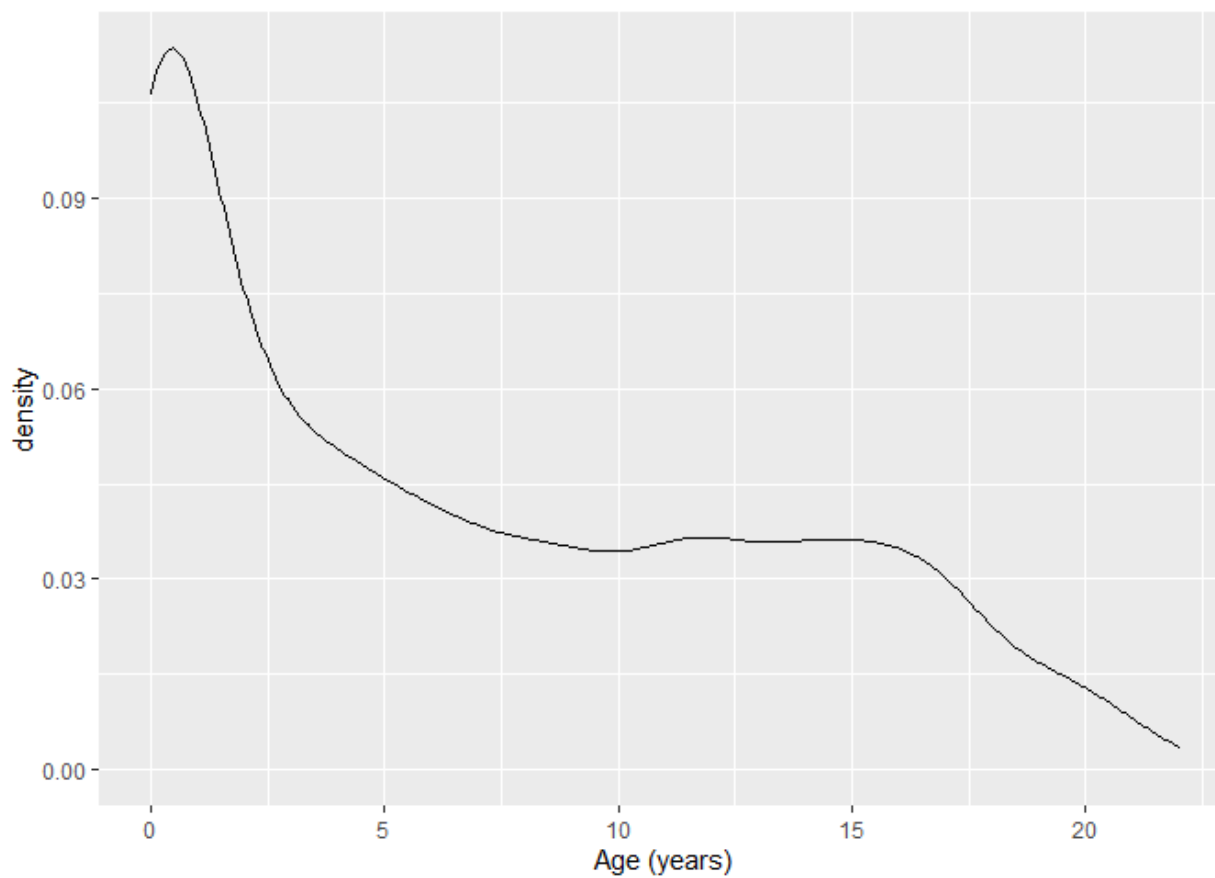
468

469 Figure 5: Time-to-event curves for RT-PCR positivity to reach neutralizing antibody levels  
 470 (Anti-SARS-CoV-2 IgG antibody  $\geq 80$  AU/mL)



471  
 472  
 473  
 474  
 475  
 476  
 477  
 478  
 479  
 480  
 481

482 Supplemental Figure S1: Age distribution of the patients underwent molecular and serology  
483 testing



484  
485  
486  
487  
488  
489