

Altitude as a protective factor from COVID-19

Timothy M. Thomson^{1,2*}, Fresia Casas³, Harold Andre Guerrero³, Rómulo Figueroa-Mujica⁴, Francisco C. Villafuerte^{4*}, and Claudia Machicado^{3*}

1 Institute for Molecular Biology, National Science Council (IBMB-CSIC),
Barcelona, Spain

2 Networked Center for Biomedical Research in Hepatic and Digestive
Diseases (CIBER-EHD), Instituto Nacional de la Salud Carlos III, Madrid, Spain

3 Laboratory of Translational Research and Computational Biology, Facultad de
Ciencias y Filosofía-LID, Universidad Peruana Cayetano Heredia, Lima, Perú

4 Laboratorio de Fisiología del Transporte de Oxígeno, Facultad de Ciencias y
Filosofía-LID, Universidad Peruana Cayetano Heredia, Lima, Perú

*Correspondence: Claudia Machicado, Ph.D., Universidad Peruana Cayetano Heredia, Lima, Perú. E-mail claudia.machicado.r@upch.pe; Timothy M. Thomson, IBMB-CSIC and CIBER-EHD, Barcelona, Spain. E-mail titbmc@ibmb.csic.es; Francisco Villafuerte, Universidad Peruana Cayetano Heredia, Lima, Perú. E-mail francisco.villafuerte@upch.pe.

Abstract

The COVID-19 pandemic had a delayed onset in South America compared to Asia (outside of China), Europe or North America. In spite of the presumed time advantage for the implementation of preventive measures to help contain its spread, the pandemic in that region followed growth rates that paralleled, and currently exceed, those observed several weeks before in Europe. Indeed, in early August, 2020, many countries in South and Central America presented among the highest rates in the world of COVID-19 confirmed cases and deaths per million inhabitants. Here, we have taken an ecological approach to describe the current state of the pandemic in Peru and its dynamics. Our analysis supports a protective effect of altitude from COVID-19 incidence and mortality. Further, we provide circumstantial evidence that internal migration through a specific land route is a significant factor progressively overriding the protection from COVID-19 afforded by high altitude. Finally, we show that protection by altitude is independent of poverty indexes and is inversely correlated with the prevalence in the population of risk factors associated with severe COVID-19, including hypertension and hypercholesterolemia. We discuss long-term multisystemic adaptations to hypobaric hypoxia as possible mechanisms that may explain the observed protective effect of high altitude from death from COVID-19.

Introduction

The expansion of the SARS-CoV-2 pandemic from Wuhan, China, has followed a rapid international spread in line with global travel patterns and slower, more complex within-country spread dynamics, attuned not only by internal migration patterns but also by a broad array of additional local determinants, including non-pharmaceutical policy interventions¹, population density², demographics³, health care system capacity and quality⁴, inequality and poverty⁵, age⁶⁻⁸, co-morbidities⁸⁻¹⁰, ethnicity^{8,11}, genetic factors¹², household structure¹³, air quality¹⁴ or climate^{15,16}. In South America, subsequent to the first confirmed case of COVID-19 reported on February 25 in São Paulo, Brazil, the pandemic has followed an apparently protracted initial phase of spread, before entering an exponential growth phase of cases and deaths and becoming the latest epicenter of the pandemic, globally¹⁷. In some cases, in particular Brazil, failure to implement mandatory nation-wide non-medical mitigation measures, including the use of face masks¹⁸ and application of social distancing in public, may help explain the uncontrolled spread of the pandemic. However, in other countries, like Peru, introduction of several such measures at an early phase of the pandemic, albeit confusing as to the use of face masks, has not prevented its spread and high mortality rates in the country as a whole.

In part due to the relative scarcity of detailed data¹⁹ and to underreporting, few studies^{20,21} have explored the dynamics and specific characteristics of the COVID-19 pandemic spread in South America. Until recently²², limited availability of viral sequence information²³⁻²⁵ has also prevented genomic epidemiological approaches to understanding viral spread, variation and possible heterogeneous pathogenesis²⁶ in specific geographical and population contexts in the region. In spite of these information shortcomings in the early stages of the pandemic in South America, accumulating data are making it possible to conduct more detailed epidemiological analyses, essential to inform policies intended to protect the populations at higher risk. Here, we have analyzed open-access data for confirmed COVID-19 cases and deaths in Peru, by means of temporal and spatial analyses, along with association analyses with demographic parameters, socio-economic determinants and co-morbidities in an ecological approach to the pandemic. Our analysis reveals a significant

protection from COVID-19 contagion and death conferred by high altitude, independent of population density, distance from the pandemic epicenter or poverty levels.

Results

Age distribution and female-to-male rates of COVID-19 in Peru

The COVID-19 pandemic in Peru has followed a dynamic similar to that of other South American countries. Unlike the majority of European countries or in North America, in which multiple import events have seeded subsequent viral spread, the spread in South America can often be traced to a single import event per country²². In Peru, the recognized index case was traced to a traveler from Europe, who nucleated an initial propagation epicenter in Lima, from which SARS-CoV-2 appears to have spread to much of the rest of the country. In order to better understand the dynamics of the pandemic in Peru and potential ecological peculiarities, we have undertaken a systematic longitudinal and geographical analysis of all cases and deaths registered in Peru through July 17, 2020. (Table S1). General data on the pandemic in Peru are readily available to the public through several information channels (<https://cs.ucsp.edu.pe/monitor-covid/>; https://covid19.minsa.gob.pe/sala_situacional.asp). We dissected such coarse data into finer detail, by analyzing the age distribution and female-to-male ratios of cumulative cases diagnosed and deaths registered on four separate dates (April 10, May 15, June 19 and July 17) in each of the larger territorial divisions of the country (i.e., departments, each containing provinces, that encompass several districts). In these analyses, we have avoided the case-fatality ratio metric as it may obscure the geographical dynamics of the pandemic in the event of concomitant evolution of cases and fatalities²⁷. Importantly, all our comparative analyses are performed with normalized case and death numbers both for population density [(cases or deaths)/(population/Km²)] and for total population (cases or deaths/10⁶ population).

While the age distribution of cases at the overall national level was stable along the entire study period, with a median age 42 on all four dates, similar to that

reported for countries like China²⁸, several departments showed a significant departure from the nationwide distribution, not only on the early cut-off point of April 10, but also on later dates (Fig. 1A). This was particularly evident in departments distant from the large coastal urban centers, such as Cajamarca, Cusco and Huancavelica (in the Andes) or San Martín, Amazonas and Madre de Dios (in the Amazon, or “selva”, region), with median ages for cases ranging from 27 (Madre de Dios; April 10 cumulative) to 39 (Madre de Dios; May 15, June 19 and July 17). These relatively young age distributions for COVID-19 cases are reminiscent of those for South Korea²⁸, a reflection of generally younger demographics as compared to Italy, Spain or other European countries²⁹. The nationwide age distributions of death from COVID-19 were also stable over time (mean age 66). The distributions of death from COVID-19 by department were variable on the earlier dates, likely owed to the low number of deaths in several departments early in the pandemic (Fig. 1A), but were generally uncoupled from age distribution of cases, as expected from the relatively low incidence of death from SARS-CoV-2 infection in the young²⁹. Also as expected^{7,9}, cases and, particularly, deaths, affected more men (0.72 to 0.74) than women nationwide (Fig. 1B). However, notable exceptions were several departments in which much of their territories are located at high altitude (> 2,500 m), namely Apurímac, Pasco and Puno, as well as Moquegua (featuring inhabited districts with altitudes ranging from sea level to above 4,000 m), where death from COVID-19 affected more women (0.51 to 0.82 for the June 19 or July 17 cut-offs) than men (Fig. 1B).

Peru presents a peculiar orographical arrangement, in which low-altitude regions are both on the coast and inland (Amazon or “selva” regions), separated by the high-altitude Andean range. This setting is uniquely suited to test hypotheses on the potential health impacts of altitude as a factor independent from other factors such as population density or distance from large urban centers. By geographically mapping population density-normalized case and death rates at the district level, we corroborated in more detail coarser publicly available maps, indicating that higher case and death rates generally corresponded to coastal and Amazon (“selva”) districts, relatively sparing districts located in the Andes range (Fig. 2). Interestingly, although the

recognized initial epicenter of the pandemic is attributed to the Lima region, which indeed presents the higher overall number of cases and deaths in Peru (Table S1), the population density-normalized data indicated an early, higher intensity epidemic in relatively distant coastal districts located North and South of Lima, as well as in a number of Amazon districts. As the pandemic progressed, the case and fatality rates progressively increased over time in a number of high-altitude districts. However, the majority of such districts were relatively unaffected, with case and death rates per population density below 1 (Fig. 2). Coastal districts are those with the largest urban centers and higher population densities. That many “selva” districts, geographically distant and not readily accessible from the coast, had case and death rates as high as many coastal districts suggests that proximity to large coastal urban centers alone is not a major factor explaining the high COVID-19 case and death rates.

Distribution and relative risk of COVID-19 case and death rates as a function of altitude

Given the above geographical distribution of COVID-19 cases and deaths, and following up several reports that have suggested an inverse correlation between altitude and COVID-19 cases and severity³⁰⁻³², we analyzed the incidence of confirmed COVID-19 cases and deaths at various altitude intervals. High altitude is defined as terrain located above 2,500 m and thus we first used this altitude threshold to stratify our data. It can be seen (Fig. 3) that the rates of COVID-19 cases and deaths in districts at altitudes below 2,500 m were significantly higher than those at altitudes above this mark on all three cut-off dates analyzed. We further stratified populations into 1,000-m intervals, and found highly significant differences in case and death rates in comparisons between sites located below 1,000 m and all other sites located above 1,000 m on all three cut-off dates (Fig. 4). Smaller differences in case and death rates were observed in comparisons between altitude intervals above 1,000 m.

Consistently, relative risks (RR) were significantly higher for COVID-19 case and death rates in districts at altitudes lower than 2,500 m, with 11.4-fold (April 10 cut-off), 7.6-fold (May 15), 8.2-fold (June 19) and 6.5-fold (July 17) RR for case rates and 13.1-fold (April 10), 21.6-fold (May 15), 10.5-fold (June 19) and

6.5-fold (July 17) RR for death rates (Fig 5A, Table S2). Likewise, RR for case and death rates were significantly higher in comparisons between sites below 1,000 m and all other altitude intervals above 1,000 m, and generally not significant when comparing 1,000-m intervals above 1,000 m (Fig. 5B, Table S2). An exception to the latter was observed when comparing RR between the 1,000-1,999 m and 3,000-3,999 m intervals, which suggests small, but significant, relative protection from SARS-CoV-2 infection and COVID-19 death conferred by the higher altitude range (Fig 5B, Table S2). This suggests that altitudes above 1,000 m confer a protective effect from COVID-19, and that altitudes above 1,000 m do not significantly add further protection. Of note, the protection conferred by altitude, although strong and consistently significant for all altitude ranges above 1,000 m as compared to those below 1,000 m, declined over time (Fig. 5B, Table S2). Interestingly, a progressively dwindling protection conferred by altitude over time was conspicuous in the 1,000-m interval comparisons (Fig. 5B). This might be attributed to either the apparent protection being an artifact related to testing coverage or data registry shortcomings, or to factors associated with the dynamics of the pandemic (see below).

As crowding and high population density are established transmission factors for viral respiratory diseases, including COVID-19 (ref. 2), we further compared COVID-19 death rates between pairs of districts with equivalent population densities but located at different altitudes, either below 1,000 m (low altitude) or above 2,500 m (high altitude). With few exceptions, these pairwise comparisons yielded significantly greater death rates in districts at low altitude than at high altitude (Fig. 6). This was also observed in pairwise comparisons between low- and high-altitude districts within the same department (Fig. S1), indicating that these trends are unrelated to territorial differences such as access to testing or health care resources. Collectively, these observations suggest a protective effect from COVID-19 conferred by altitude, independent of population density.

High incidence of COVID-19 at high altitude sites may reflect recent migration triggered by the COVID-19 pandemic

The above pairwise comparisons between districts with equal population densities and very different altitudes were plotted as fractions of the combined death rates of the two districts under consideration, for the May 15, June 19 and July 17 cut-off dates (Fig. 7). The earlier date showed a strong and general predominance of death rates in lower districts ($< 2,500$ m) over higher altitude districts ($\geq 2,500$ m), with two notable exceptions in the pairwise comparisons between the low-population density ($35/\text{Km}^2$) districts Catacas (Piura, low altitude) vs. La Oroya (Junín, high altitude) and the high-population density ($1,136/\text{Km}^2$) districts Chaclacayo (Lima, low altitude) vs. Huamancaca Chico (Ayacucho, high altitude) (Fig. 7). This predominance was progressively attenuated on later cut-off dates in the comparisons Belén (Loreto, low altitude) vs. Tarma (Junín, high altitude), with a population density of $111/\text{Km}^2$, San Vicente de Cañete (Lima, low altitude) vs. Muquiyayo (Junín, high altitude), with a density of $118/\text{Km}^2$, and Huaral (Lima, low altitude) vs. Huaráz (Ancash, high altitude), with a density of $161/\text{Km}^2$. This could be attributed to either decreased death rates over time in low-altitude districts or, conversely, increased death rates over time in the population density-paired high-altitude districts.

More generally, we noted that, although high altitude sites had attenuated case and death rates as compared to low altitude sites, a number of high-altitude districts showed increased COVID-19 incidence and death rates over time. As an approach to trace the origin of these high-death rate districts located at high altitude, we plotted all districts as a function of deaths newly registered at three time intervals, from March 1 through April 10, April 11 through May 15, and May 16 through June 19. This showed that newly registered deaths from COVID-19 increased over time in a number of districts that clustered at altitudes between 2,500 and 3,500 m (Fig. S2). We reasoned that, under community spread, newly registered death rates would be in direct relationship to prior case rates in the same districts and thus be geographically distributed in accordance with prior case rates, while death rates associated with imported cases would not be correlated to prior local case buildup. Out of 743 districts in our database located at altitudes between 2,500 and 3,500 m, 65 had $\geq 50/10^6$ newly registered deaths between May 16 and June 19. Remarkably, geographical mapping of these districts revealed that 60 of them (92.3%) were located within

a 50 Km-wide strip on either side of a path leading from the Lima metropolitan area through the Canta and Yauli districts and then along route 3N/3S, from the Cajamarca department in the North all the way to the Chilean border in the South, with a dense cluster near Huancayo, on route 3S (Fig. 8). Three of the 5 districts outside this path formed a tight cluster near Arequipa, a major urban center with high case and death rates. Interestingly, high-death rate, high-altitude districts first (April 11 through May 15 interval) appeared near Lima, and in more distant districts along the path described above on later dates (May 16 through June 19). Furthermore, all of the districts described above (Fig. 7) showing longitudinal shifts in death rate predominance in population density-paired comparisons between high- vs. low-altitude districts are located within this narrow strip of land. This pattern is highly suggestive of propagation from the early epicenter of the pandemic, namely the Lima metropolitan area, to high-altitude districts, which may explain the high-altitude, high-death rate clusters located in relative proximity to Lima and along a heavily transited path used by recent migration forced by the pandemic, in contravention of Government-mandated mobility restrictions.

Altitude as an independent protective factor from COVID-19

The above observations suggest that altitudes above 1,000 m confer protection from COVID-19. While the only known protective factor from the severity of this disease is young age⁶⁻⁸, several co-morbidities have been shown, in cohort studies, to associate with severe COVID-19, including hypertension, cardiovascular disease, obesity, diabetes or respiratory diseases^{6-8,33}. The data described above (Fig. 1) hinted at several geographical differences in age distribution and male-to-female ratios of cases and deaths. To explore if age or sex are a factor associated with the diminished incidence and death rates in high-altitude districts, we compared the age distribution of COVID-19 cases and deaths in districts stratified by 1,000-m altitude intervals. There were no statistical differences in normalized case or death rate age distributions between altitude intervals on any of the four cut-off dates under consideration. A trend towards a younger age distribution in cases in the 3000-4999 m altitude range (Fig. 9A) was not statistically significant. Similarly, there were no

significant differences in male-to-female case or death ratios in comparisons between different altitude intervals (Fig. 9B), although female death rates reached 0.50 at the 1000-1999 m range in the May 15 registry cut-off. CLAUDIA POR FAVOR VERIFICA ESTO DE LA SIGNIFICACIÓN ESTADÍSTICA DE RATIOS DE SEXOS. From this, we conclude that neither altitude-dependent age distribution, nor differential sex susceptibility, explains the apparent protection from COVID-19 associated with high altitude.

The dataset used in our analysis does not contain clinical information, which precludes the analysis of co-morbidities. In order to ascertain how co-morbidities known to associate with severe COVID-19 may influence the geographical distribution of cases and deaths, we resorted to a proxy approach by which the most recently available survey data on the nationwide prevalence of non-transmissible diseases in Peruvian cities³⁴ were used as variables in principal component analysis (PCA) and correlation tests. The variables analyzed included prevalence of hypertension, hypercholesterolemia, diabetes, obesity, smoking habit and sedentary lifestyle, retrieved from the 2010 Tornosol survey³⁴, the 2018 poverty index³⁵, current population density, and the cut-off date of May 15 count for COVID-19 deaths per million people. Expectedly, our analyses showed clustering of sedentary lifestyle with obesity and hypercholesterolemia with diabetes (Fig. 10A). Interestingly, hypertension rates clustered more closely with COVID-19 death rates than with the other morbidities analyzed as variables. Rates of smoking habit did not cluster with any of the other morbidities, and population density was as close to COVID-19 death rates as were hypertension rates (Fig. 10A). Importantly, altitude inversely correlated with COVID-19 death rates and all morbidity prevalence rates analyzed. Also of note, poverty indexes clustered together with altitude, although without reaching statistical significance, and inversely correlated with all analyzed morbidities. (Fig.10B). With all the caveats stemming from a comparison between current epidemiological data and past prevalence of co-morbidities, plus the fact that we could only analyze select cities, these observations suggest that death from COVID-19 occurs preferentially in a context of high rates of morbidities such as hypertension and

hypercholesterolemia, prevalent in low-altitude cities, and less preferentially in high-altitude, high-poverty index locations.

Discussion

This ecological study is intended to provide details relevant for the understanding of the dynamics of the COVID-19 pandemic in Peru that may aid in shaping policy decision-making in the face of its unrelenting spread. Our most relevant finding is a significant association between life in high altitude and a lower risk of COVID-19 contagion and death from the disease. We also provide evidence that the recent surge of the pandemic in high-altitude districts in Peru may be explained by the influx of migrants from large urban centers to high-altitude districts along a specific land route, overriding the protective effect that might have been conferred by high altitude to residents of those particular districts.

Although prior studies have suggested that altitude may be a protective factor from COVID-19 (ref. 27,30-32,36-40), our analysis is the first to employ a large longitudinal database encompassing all COVID-19 cases and deaths registered in Peru through July 17, 2020 (<https://www.datosabiertos.gob.pe/group/datos-abiertos-de-covid-19>). In order to correct for population density, which tends to be significantly higher on the coastal lowlands, we have normalized case and death counts by population density and per million people in all districts. Likewise, we have considered the prevalence of non-transmissible diseases as determined by prior surveys, as a proxy for potential co-morbidities associated with case and death incidence³⁴. Past studies have shown that low-altitude populations in Peru, both on the coast and in the Amazon forest departments, have significantly higher risk than high altitude populations for a number of non-transmissible diseases, including obesity, diabetes or hypertension^{41,42}, comorbidities that impart strong risks for the development of severe COVID-19 (ref. 6-8,33).

Our multivariate analysis corroborates that the prevalence of obesity, diabetes, hypertension and hypercholesterolemia correlate with low altitude. It further reveals that the normalized death rate from COVID-19 is significantly correlated

with prevalence of hypertension and hypercholesterolemia, as well as low altitude. Interestingly, death rates from COVID-19 are not significantly correlated with population density, despite a trend towards correlation. Indeed, our comparisons of case and death incidence between populations stratified by altitude shows the same protective effect of altitude when normalized by million people or by population density (population/Km²). Although crowding is a known viral spreading factor⁴³, there is evidence that spread of SARS-CoV-2 tends to adopt focal patterns, with superspreader conditions or individuals in which high viral production and loads can be more relevant nucleating transmission factors than mere population density⁴³⁻⁴⁵. Likewise, current COVID-19 death rates are not correlated with local prevalence of smoking habit, an observation consistent with a recent large-scale cohort study that found that smoking did not confer a significantly increased risk of severe COVID-19 (ref. 8).

It could be argued that populations in sparsely populated sites at high altitude might have less access to diagnostic PCR or serological tests confirmatory of SARS-CoV-2 infection. However, these tests are offered to the general public free of charge by the Peruvian national health system, and there is no evidence of shortage of tests, although they are unevenly distributed throughout the territory (see Study Limitations). Likewise, high poverty levels could limit the availability of health care and may be expected to be associated with elevated case and death rates as observed elsewhere (e.g., <https://www1.nyc.gov/site/doh/covid/covid-19-data.page>). Contrary to this expectation, in our multivariate analyses, high poverty indexes were associated with higher altitude and lower, not higher, death rates. In conclusion, altitude appears to confer protection from COVID-19 incidence and death independent of population density and not offset by high poverty levels. The latter observation is at odds with the findings of the OpenSAFELY study, which detected an increased risk of COVID-19 death with greater deprivation in the United Kingdom⁸, not fully explained by pre-existing conditions or other risk factors. This reinforces the notion that additional local conditions are significant modifiers of sensitivity to COVID-19.

We have found that the protective effect of altitude was very strong when comparing populations below and above of the commonly accepted high

altitude threshold (2,500 m), with relative risks for low altitude populations, both in coastal and Amazonian regions, between 6.5 and over 11-fold for cases and over 6.5 and 21.6-fold for deaths, relative to high-altitude populations. Because atmospheric pressure decreases with altitude, the inspired PO_2 (P_iO_2) is also reduced. At 2,500 m, P_iO_2 decreases approximately to 110 mm Hg from its sea-level value of 150 mm Hg, and consequently arterial PO_2 (P_aO_2) drops below 70 mmHg. Around this value, hemoglobin (Hb) O_2 saturation approaches the inflexion region of the O_2 -Hb dissociation curve and therefore the physiological effects of hypoxemia become noticeable and significant. Hence, the use of 2,500m as the threshold for defining high altitude. This convention notwithstanding, our analysis shows that altitudes higher than 1,000 m confer a protective effect from COVID-19 similar to altitudes above 2,500 m., with a smaller benefit observed for altitudes higher than 1,000 m.

In spite of the general protection conferred by altitude, we have observed clusters of high incidence of cases and deaths from COVID-19 at high altitude sites. Geographical localization of high-altitude clusters of newly registered COVID-19 deaths revealed that the majority corresponds to sites on, or adjacent to, a major migration route from the Lima metropolitan area, namely route 3N/3S. Because the overwhelming majority of the high altitude locations outside of this route have very low rates of COVID-19 cases and deaths, we surmise that these high case and death rate clusters are a reflection of viral spread imported from the high-rate Lima metropolitan district, rather than *bona fide* community spread. In all transmissible disease epidemics, short distance from a major focus is a predictor of case incidence and rate. However, in the COVID-19 pandemic in Peru, sites located at long distances from Lima, such as districts in the Amazon regions, show high case and death rates. Importantly, the latter sites are located at low altitude. Based on these considerations, we suggest a scenario in which altitudes above 1,000 m confer a general protective effect from COVID-19, in co-existence with high case and death rate clusters imported from Lima. At this time, we have not observed evidences for spread to high-altitude sites from other high-incidence coastal sites, a situation that might change if the pandemic continues its current trend.

This scenario implies that the apparent protection from COVID-19 conferred by altitude would benefit long-time resident populations, rather than recent migrants to high-altitude districts. Protection attributed to altitude was also noted during the 2009 H1N1 influenza pandemic in Peru⁴⁶ and the 2006 H5N1 avian influenza epidemic in Indonesia⁴⁷ and Thailand⁴⁸. Experiments with mice acclimatized to high altitude also showed enhanced resistance to a type A influenza strain⁴⁹. As noted above, a major factor impacting physiological changes associated with altitude is hypobaric hypoxia⁵⁰. Low environmental P_iO_2 at high altitude is a selective force that has shaped the genetic endowment of highlanders in the Andes, the Himalayas and the Ethiopian plateau⁵¹. Human populations have evolved to select for local and shared high-altitude adaptive traits. Adaptive variants in regulators of the hypoxia response pathways are commonly shared among populations from all three high-altitude regions^{51,52}, including EPAS1 (also known as HIF-2), SENP1 or EGLN1 (PHD2) in the Andes⁵³ and the Himalayas⁵⁴ or THRB and ARNT2 in Ethiopia⁵⁵. The implication is that these highland populations display genetically-determined elevated activation of hypoxia-response pathways at steady-state compared to lowlanders. This is supported by evidences such as stable changes in lung respiratory capacity, peripheral and central vasculogenesis, enhanced erythropoiesis and metabolic features⁵⁰, all of which are known targets of the hypoxia response in cellular and animal models⁵⁶. Some of these physiological responses are also observed in lowlanders upon acute hypoxia or under short-term acclimatization to high altitude, which are reversed at low altitude.

In keeping with our hypothesis that long-term, but not short-term exposure to altitude and relative hypoxia may explain protection from COVID-19, we propose that stable morphological, physiological, and metabolic characteristics resulting from long-term or life-long high altitude exposure, genetically or epigenetically determined, are more likely to be associated with relative protection from severe respiratory viral diseases than short-term responses to hypobaric hypoxia. Potential mechanistic explanations of the protective effect of altitude might include chronic hypoxia-induced adaptive characteristics in the lungs at the organ and cellular level, expression of viral receptors and

associated endothelial and lymphatic vessel networks, as well as metabolic adaptations.

SARS-CoV-2 uses angiotensin-converting enzyme 2 (ACE2) for cell entry, which is potentiated by the transmembrane serine protease 2 (TMPRSS2)⁵⁷. As such, low levels of both proteins could mitigate the entry of SARS-CoV-2 into susceptible cells. Hypoxia and the activation of hypoxia-dependent pathways have shown to modulate the expression of ACE2 and TMPRSS2. Acute hypoxia *in vitro* induces HIF-1-independent expression of ACE2^{58,59}, followed by HIF-1-dependent repression and downregulation under prolonged hypoxia⁶⁰. Also, activation of the HIF pathway through the hypoxia-mimicking compound CoCl₂ causes a decrease of TMPRSS2 expression *in vitro*⁶¹. Downregulation of ACE2 by chronic hypoxia has also been proposed as a mechanism for pulmonary hypertension associated with acute mountain sickness in lowlanders travelling to high altitude⁶². However, there is no evidence that ACE2 expression is regulated *in vivo* in populations living at high altitude⁶³. Further, this possible mechanism would be specific of viruses using ACE2 as their receptor, such as SARS-CoV and SARS-CoV-2, and would not explain protection from H1N1 influenza or viruses that use other cellular ports of entry.

On the other hand, low ACE2 levels are expected to lead to angiotensin-II accumulation and consequent pulmonary vasoconstriction and hypertension^{60,62}. Highlanders may compensate for this by further adaptive changes in lung structure and vascularization, including augmented lymphangiogenesis which may facilitate fluid drainage to prevent lung edema, as shown in some animal models⁶⁴. Importantly, experimental genetic depletion of lymphatic vessels leads both to lung emphysema and lung fluid accumulation under injury⁶⁵, highlighting the importance of the lymphatic network in normal and diseased lung function. Mechanistically, hypoxia induces HIF-1-independent expression of the lymphangiogenic factors VEGF-C and VEGF-D⁶⁶, promoting new lymphatic vessel formation, possibly in concert with hypoxia-driven modulation of Notch activity⁶⁷. Hypoxia and the HIF-1 pathway regulate additional structural features in the lung. Thus, inflammatory stimuli⁶⁸ and stretch injury⁶⁹ stabilize HIF-1 α in alveolar epithelial cells, and resolution and repair in the alveolus requires the proliferation and trans-differentiation of

alveolar cells, that in turn requires HIF-1 α -dependent VEGF expression⁶⁸. It should be noted that the lung injuries associated with COVID-19 are distinct from those of high-altitude pulmonary edema (HAPE)^{70,71}. While the acute respiratory distress syndrome in COVID-19 is due to primary alveolar and lung endothelial destruction with concomitant inflammation and microthromboses^{72,73}, HAPE is a non-cardiogenic pulmonary edema caused by hypoxic pulmonary vasoconstriction that leads to a non-inflammatory and hemorrhagic alveolar capillary leak that only over time may elicit a secondary inflammatory response⁷⁴. Nevertheless, it is plausible that the protective pathophysiological mechanisms discussed above are relevant to both conditions.

Further, high altitude and hypoxia have significant consequences on the activity and regulation of the immune and inflammatory systems and metabolic networks, which may be relevant to the observed protection from death from COVID-19 in high altitude populations. Like in SARS or MERS, in addition to acute respiratory distress and, less frequently, heart or renal failure⁷⁵, uncontrolled hyperinflammatory states⁷⁶ and disseminated coagulopathy^{75,77} underlie death from COVID-19 in many patients. Hypoxia results in metabolic and immune-inflammatory reprogramming and activation of HIF and NF- κ B pathways in tightly intertwined networks⁷⁸, and adaptation to high altitude and chronic hypoxia follows different metabolic and immune modulatory routes for lowlanders and highlanders⁷⁹. In experimental settings, acute hypoxia favors a HIF-1 α -mediated skewing of macrophages to an inflammatory M1 phenotype, and of immunosuppressor Treg to inflammatory Th17 phenotypes, dependent on increased mitochondrial succinate production. In contrast, HIF-2 α polarizes an inflammatory-suppressing M2 macrophage phenotype⁸⁰. Of note, while the initial response to hypoxia (< 24 h) is dominated by HIF-1 α , more sustained responses are supported by HIF-2 α ⁸¹. Also relevant when considering immune and inflammatory adaptation to hypoxia and high altitude, HIF-1 is ubiquitously expressed, whereas HIF-2 shows more restricted expression patterns, predominantly in immune cell subtypes such as macrophages, neutrophils and lymphocytes⁸².

In a study of effects of short-term and long-term exposure to high altitude, lowlanders, but not Sherpas, diminished their muscle succinate levels while developing signs of oxidative stress with prolonged exposure to high altitude, at least partly owing to lower but more efficient OXPHOS in altitude in Sherpas⁷⁹. HIF-1 α promotes glycolysis through transcriptional upregulation of glycolytic enzymes, while limiting mitochondrial respiration through upregulation of pyruvate dehydrogenase kinase-1 (PDK1), which inhibits pyruvate dehydrogenase and entry of pyruvate to the TCA cycle⁵⁶. Consistently, in the same study, lowlanders showed increased glycolytic activity at high altitude, while Sherpas had no sign of altered glucose homeostasis⁷⁹, suggesting that highlanders have reprogrammed their metabolism for alternative sources of ATP in hypoxia. As high glycolytic rates favor the differentiation of myeloid progenitors to proinflammatory M1 macrophages⁷⁸, this would provide a mechanistic explanation for the inflammatory reaction observed in lowlanders at high altitude and the protection from excessive inflammation in highlanders. In turn, blunted inflammatory responses are expected to protect highlanders from inflammation-induced obesity and adipocyte accumulation, another source of inflammatory molecules such as interleukin-1 β (IL-1 β) or interleukin-6 (IL-6)^{83,84}. Interestingly, apart from HIF-pathway genes, variants coding for metabolic and immune-inflammatory molecules are significantly linked with highlander populations, including IL1B, IL6 and tumor-necrosis factor (TNF) among Andeans and Himalayans, or peroxisome proliferator-activated receptor alpha (PPARA) among Himalayans⁵¹.

Finally, erythropoietin (Epo) is also a candidate to play an anti-inflammatory role in highlanders following SARS-CoV-2 infection⁸⁵. Besides its role in erythropoiesis, this pleiotropic hormone/cytokine exerts neuro and immunomodulatory, anti-inflammatory, anti-apoptotic, and tissue-protective effects^{86,87}, and thus could be beneficial in diminishing the clinical outcome severity and contribute to explain in part the lower lethality due to COVID-19 at high altitude. Chronic hypoxia increases Epo expression in most tissues and reduces the expression of the soluble Epo receptor (sEpoR), an endogenous Epo antagonist^{88,89}. This combination increases Epo availability and ensures a stronger Epo signaling. Andean highlanders show modestly increased serum

Epo and decreased sEpoR compared to lowlanders⁹⁰, and therefore it is possible that an Epo-related anti-inflammatory steady-state favors a better clinical outcome after SARS-CoV-2 infection.

In summary, we favor the view that long-term high altitude habitation/exposure protects from severe respiratory viral diseases, including COVID-19, through multiple mechanisms prevalent in residents or genetically selected populations adapted to chronic hypobaric hypoxia. Such mechanisms include physiological, anatomical, metabolic and immune-inflammatory adaptations. The role played by unabated inflammation in COVID-19 pathogenesis has been evident from the outset of the pandemic⁷⁶ and addressed therapeutically by targeting inflammatory molecules, and that of metabolic responses and viral subversion has been eloquently highlighted in a recent review article⁹¹. It has been argued that environmental factors, including high levels of ultraviolet radiation, low humidity or low temperatures, could contribute to a diminished transmission of SARS-CoV-2 at high altitude⁶³. It should be noted, though, that high humidity acts as a protective barrier against^{92,93}, while low temperatures favor⁹³, viral respiratory diseases. Our analysis supports that living in altitude is a general protective factor from severe COVID-19. Translating this knowledge to therapies for immediate use against COVID-19, for instance by means of pharmacological stabilizers of HIF transcription factors^{91,94}, is challenging, given the likelihood that protective effects may require long-term multi-systemic adaptations and that adroit navigation will be required to negotiate through the heterogeneous downstream consequences of manipulating different components of the hypoxia response.

Study limitations

This study presents some limitations. First, the public databases used for our analyses contain gaps and inconsistencies in the numbers of cases or deaths reported for some districts. As described in the Methods section, all such districts were removed from our analyses, which might introduce a bias. The removed districts, though, showed geographical distributions that were similar to the entire set of districts, particularly with regards to altitude. As such, removal of these districts from our analysis is not expected to result in

significant variations in our conclusions pertaining to the associations between COVID-19 incidence and altitude.

Second, positive cases encompass those tested by more robust (sensitive, specific and reproducible) qPCR diagnostic assays and those tested by arguably less reliable serological assays⁹⁵. The latter may include false positive results, potentially significantly affecting our analysis and conclusions. While considering this issue as potentially problematic, we have also reasoned that such a bias would be similarly represented in all districts, thus largely offsetting possible distortions introduced by false positives in our comparative analyses between different districts or groups of districts.

Third, although data on testing coverage per district or province (encompassing several districts) are not available, data per department (the next level of territorial organization), and show variations in coverage from 1.08% of the population in Cajamarca to 8.76% in Moquegua (Table S3). *A priori*, this could introduce a bias towards underreporting in registered cases below uncertain thresholds of testing coverage, while testing coverage above yet uncertain thresholds would result in lower rates of registered positive cases. In general, larger coastal urban centers have higher testing coverage. Systematic population-level (> 5,000 individuals) serological testing for SARS-CoV-2 has found case prevalence between 1.7% and 19.3% in diverse populations with very different testing coverage⁹⁶⁻⁹⁸. However, we have found no significant correlation between testing coverage and case rates ($R^2 = 0.13$) or, particularly, death rates ($R^2 = 0.03$) (Fig. S3). Accordingly, we have placed more emphasis on the conclusions drawn from the analysis of death rates.

Fourth, our correlation analyses of COVID-19 deaths with the prevalence of non-transmissible diseases uses, for the latter, data from a survey conducted in 2010-11 in select cities in Peru. More recent surveys^{99,100} provide information limited to one or two the morbidities of our interest and without city- or district-level detail. Although the relative prevalence among departments of hypertension, obesity or smoking habits did not vary significantly between 2014 and 2019 (ref. ¹⁰⁰), our analyses would provide a more accurate representation with more current prevalence data for morbidities at city or district levels.

Finally, this study, like many other current studies on the COVID-19 pandemic, suffers from the hurdle posed by a constantly moving target. As such, our conclusions on the protective effects of altitude, supported by our correlation, longitudinal and geographical analyses, may risk being quickly obscured *de facto* by the massive and rapid pandemic wave currently sweeping the entire Peruvian territory. Imported cases quickly turn into foci of community transmission, with potential high viral loads overwhelming any possible protective effect that may be afforded by physiological or molecular adaptations to high altitude of the affected local populations. In other words, adaptations to high altitude may confer a degree of protection from, but not immunity against, SARS-CoV-2 and its pathogenicity.

Methods

Study design. We conducted a retrospective study using national registry data including COVID-19 cases and death data (see Data Source). The study explores cumulative data registered on four different cut-off dates: April 10, May 15 and June 19, July 17. Cases correspond to the population diagnosed as infected with SARS-COV-2 and positive by either quantitative RT-PCR (molecular test) or by a serological assay. Deaths from COVID-19 correspond to patients positive for SARS-CoV-2 by either a molecular or a serological assay, and certified as death from COVID-19.

Data source. Data on positive COVID-19 cases and deaths were collected from the Open COVID-19 data resource released by the Secretaría de Gobierno Digital of the Peruvian Government. Data was accessed between June 10, 2020 and July 17, 2020 through <https://www.datosabiertos.gob.pe/group/datos-abiertos-de-covid-19>. The data file provided by the Open Data contains country-specific daily numbers of COVID-19 cases and deaths, and include gender, age, date of diagnosis, type of diagnostic assay (serological or PCR), and location information including district, province and department. For each date, we calculated two COVID-19 epidemic measures: i) number of cases per million people or population density calculated using the number of cumulative cases and population size or population density, ii) number of deaths per million people or population density calculated as the number of cumulative deaths and

population size or population density. Demographic data for Peru was obtained from the Instituto Nacional de Estadística e Informática (INEI) through <https://www.inei.gob.pe>. Data were a cumulative count up to and including April 10, 2020; May 15, 2020, June 19, 2020, and July 17, 2020. Records were considered as nulls when age, gender or date were missing and when district and province were missing. The resulting dataset includes 333,958 cases and 12,045 deaths as of July 17, 2020. For some analyses, cases and deaths newly registered between April 11 and May 15 or between May 16 and June 19 were retrieved. Each case represented a positive diagnosis of COVID-19 along with demographic data.

Demographic parameters. A descriptive analysis was done on the basis of nationwide data for gender and age of cases and deaths, stratified into 10 age ranges (0-9, 10-19, 20-29, 30-39, 40-49, 50-59, 60-69, 70-79, 80-89, ≥ 90). The data were analyzed both by departments and by altitude intervals (in meters above mean sea level, mams), this latter was associated to each district. Departments included Amazonas, Áncash, Apurímac, Arequipa, Ayacucho, Cajamarca, Callao, Cusco, Huancavelica, Huánuco, Ica, Junín, La Libertad, Lambayeque, Lima, Loreto, Madre De Dios, Moquegua, Pasco, Piura, Puno, San Martín, Tacna, Tumbes y Ucayali. Districts were classified according to their altitude in the following ranges: 0-999 m, 1000-1999 m, 2000-2999 m, and 3000-4999 m. The altitude for each district as well as data on population size, territory area, and population density were obtained from the National Institute of Statistics and Informatics (INEI) at available at <https://www.inei.gob.pe/>. This database is available in Table S1.

Mapping. Geographical maps with cases and deaths per districts were composed with Mapinseconds (<http://www.mapinseconds.com/>) and precise geographical localization of selected districts was done with the aid of GoogleMyMaps (<https://www.google.com/mymaps>).

Estimates of Relative Risk. The relative risk (RR), its standard error and 95% confidence interval were calculated according to Altman¹⁰¹. The RR is given by

$$RR = \frac{a/(a+b)}{c/(c+d)}$$

with the standard error of the log relative risk being

$$SE \{ \ln (RR) \} = \sqrt{\frac{1}{a} + \frac{1}{c} - \frac{1}{a+b} - \frac{1}{c+d}}$$

and 95% confidence interval

$$95\% \text{ CI} = \exp(\ln(RR) - 1.96 \times SE \{ \ln(RR) \}) \text{ to } \exp(\ln(RR) + 1.96 \times SE \{ \ln(RR) \})$$

RRs were calculated for pairwise comparisons of cumulative cases or deaths between different altitude intervals on a given cut-off date. Cases or deaths counts were designated events (numerators), and the sums of the general population for each altitude interval were designated controls (denominators). Population numbers as control values was used rather than numbers of SARS-CoV-2 diagnostic tests performed, given the uncertainty and the territorial unevenness of the testing coverage.

Pairwise comparisons of low- and high-altitude districts. Official reports show total number of deaths by department. However, many of these regions harbor low- and high-altitude provinces. Thus, to exemplify the proportional contribution to total death rates of these provinces, we compared death rates normalized to population density of low and high-altitude capital districts in the same department. To illustrate the relationship between death rate, altitude and population density, we compared death rates in paired low- and high-altitude districts of similar population density. Pairs of districts were generated based on their altitude ($< 2,500$ m or $\geq 2,500$ m) and a maximum population density difference of 5%. Comparisons were made at cut-off points May 15, June 19, and July 17. To illustrate the contribution of low and high-altitude districts of each pair, the fractional composition was calculated as the number of deaths per million of each district, divided by the total number of deaths at each population density category.

Principal component analysis (PCA) and correlation tests (CT). Cities were selected for which prevalence data for morbidities are available as part of the Tornasol survey³⁴. For the same cities, the 2018 poverty survey data³⁵ were used, and COVID-19 death rates (per 10^6 people) on the May 15 cut-off date were retrieved from the curated general dataset. Altitude and population density were retrieved as indicated under Data Sources. Values for all variables were row median-normalized and subjected to PCA and CT as implemented in XLSTAT. For graphical representation, the first two factors from PCA were plotted as biplots including observations and variables with their depicted eigenvectors.

Generation of heatmaps. For heatmap generation, variables were row-normalized and heatmaps generated with the aid of Morpheus (<https://software.broadinstitute.org/morpheus/>).

Other statistical analyses. For non-paired, non-parametric data comparisons, Mann-Whitney tests were performed on GraphPad. Chi-square tests were applied for contingency data analyses. Unless otherwise indicated, significance levels are denoted in graphs by asterisks, as follows: * ≤ 0.05 ; ** ≤ 0.01 ; *** ≤ 0.001 ; **** ≤ 0.0001 .

Acknowledgments and Funding Sources

This study was partially funded by grants from the CSIC (COV19-006) and CIBER-EHD (Spain), awarded to T.M.T. F.C.V is supported by a Wellcome Trust Intermediate Research Fellowship in Public Health and Tropical Medicine.

Author Contributions

C.M., T.M.T. and F.C.V. conceived and designed the study, analyzed the data, generated figures and wrote and assembled the manuscript; H.A.G., F.C. and R.J.F. retrieved and curated databases, analyzed data and generated figures.

Conflict of Interest Statement

All authors declare no conflicts of interest.

References

1. Liu Y, Ning Z, Chen Y, *et al.* Aerodynamic analysis of SARS-CoV-2 in two Wuhan hospitals. *Nature* 2020. 10.1038/s41586-020-2271-3.
2. Rocklöv J, Sjödin H. High population densities catalyse the spread of COVID-19. *J Travel Med* 2020; **27**(3). 10.1093/jtm/taaa038.
3. Dowd JB, Andriano L, Brazel DM, *et al.* Demographic science aids in understanding the spread and fatality rates of COVID-19. *Proc Natl Acad Sci U S A* 2020; **117**(18): 9696-8. 10.1073/pnas.2004911117.
4. Walker PGT, Charles Whittaker C, Oliver J Watson OJ, *et al.* The impact of COVID-19 and strategies for mitigation and suppression in low- and middle-income countries. *Science* 2020. 10.1126/science.abc0035.
5. Ahmed F, Ahmed N, Pissarides C, Stiglitz J. Why inequality could spread COVID-19. *Lancet Public Health* 2020; **5**(5): E240
6. Docherty AB, Harrison EM, Green CA, *et al.* Features of 20 133 UK patients in hospital with covid-19 using the ISARIC WHO Clinical Characterisation Protocol: prospective observational cohort study. *BMJ* 2020; **369**: m1985. 10.1136/bmj.m1985.
7. Zhou F, Yu T, Du R, *et al.* Clinical course and risk factors for mortality of adult inpatients with COVID-19 in Wuhan, China: a retrospective cohort study. *Lancet* 2020; **395**(10229): 1054-62. 10.1016/S0140-6736(20)30566-3.
8. Williamson EJ, Walker AJ, Bhaskaran K, *et al.* OpenSAFELY: factors associated with COVID-19 death in 17 million patients. *Nature* 2020. 10.1038/s41586-020-2521-4.
9. Docherty AB, Harrison EM, Green CA, *et al.* Features of 16,749 hospitalised UK patients with COVID-19 using the ISARIC WHO Clinical Characterisation Protocol. *medRxiv* 2020: 2020.04.23.20076042. 10.1101/2020.04.23.20076042.
10. Clark A, Jit M, Warren-Gash C, *et al.* Global, regional, and national estimates of the population at increased risk of severe COVID-19 due to underlying health conditions in 2020: a modelling study. *Lancet* 2020. 10.1016/S2214-109X(20)30264-3.
11. Harman K, Verma A, Cook J, *et al.* Ethnicity and COVID-19 in children with comorbidities. *Lancet* 2020. 10.1016/S2352-4642(20)30167-X.
12. Ellinghaus D, Degenhardt F, Bujanda L, *et al.* Genomewide Association Study of Severe Covid-19 with Respiratory Failure. *N Engl J Med* 2020. 10.1056/NEJMoa2020283.
13. Nande A, Adlam B, Sheen J, Levy MZ, Hill AL. Dynamics of COVID-19 under social distancing measures are driven by transmission network structure. *bioRxiv* 2020. 10.1101/2020.06.04.20121673.
14. Wu X, Nethery RC, Sabath BM, Braun D, Dominici F. Exposure to air pollution and COVID-19 mortality in the United States: A nationwide cross-sectional study. *medRxiv* 2020. 10.1101/2020.04.05.20054502.
15. Sajadi MM, Habibzadeh P, Vintzileos A, Shokouhi S, Miralles-Wilhelm F, Amoroso A. Temperature, Humidity, and Latitude Analysis to Estimate Potential Spread and Seasonality of Coronavirus Disease 2019 (COVID-19). *JAMA Netw Open* 2020; **3**(6): e2011834. 10.1001/jamanetworkopen.2020.11834.
16. Wu Y, Jing W, Liu J, *et al.* Effects of temperature and humidity on the daily new cases and new deaths of COVID-19 in 166 countries. *Sci Total Environ* 2020; **729**: 139051. 10.1016/j.scitotenv.2020.139051.

17. Candido DS, Claro IM, de Jesus JG, *et al.* Evolution and epidemic spread of SARS-CoV-2 in Brazil. *Science* 2020: eabd2161. 10.1126/science.abd2161.
18. Zhang R, Li Y, Zhang AL, Wang Y, Molina MJ. Identifying airborne transmission as the dominant route for the spread of COVID-19. *Proc Natl Acad Sci U S A* 2020. 10.1073/pnas.2009637117.
19. Carrillo-Larco RM. COVID-19 data sources in Latin America and the Caribbean. *Travel Med Infect Dis* 2020: 101750. 10.1016/j.tmaid.2020.101750.
20. Miller MJ, Loaiza JR, Takyar A, Gilman RH. COVID-19 in Latin America: Novel transmission dynamics for a global pandemic? *PLoS Negl Trop Dis* 2020; **14**(5): e0008265. 10.1371/journal.pntd.0008265.
21. Ferreira RV, Martines MR, Toppa RH, Assunção LM, Desjardins MR, Delmelle EM. Applying a prospective space-time scan statistic to examine the evolution of COVID-19 clusters in the state of São Paulo, Brazil. *medRxiv* 2020. /10.1101/2020.06.04.20122770.
22. Candido DS, Claro IM, de Jesus JG, *et al.* Evolution and epidemic spread of SARS-CoV-2 in Brazil. *Science* 2020. 10.1126/science.abd2161.
23. Padilla-Rojas C, Lope-Pari P, Vega-Chozo K, *et al.* Near-Complete Genome Sequence of a 2019 Novel Coronavirus (SARS-CoV-2) Strain Causing a COVID-19 Case in Peru. *Microbiol Resour Announc* 2020; **9**(19). 10.1128/MRA.00303-20.
24. Jesus JG, Sacchi C, Candido DDS, *et al.* Importation and early local transmission of COVID-19 in Brazil, 2020. *Rev Inst Med Trop Sao Paulo* 2020; **62**: e30. 10.1590/s1678-9946202062030.
25. Ramirez JD, Florez C, Munoz M, *et al.* The arrival and spread of SARS-CoV2 in Colombia. *medRxiv* 2020. 10.1101/2020.06.11.20125799.
26. Day T, Gandon S, Lion S, Otto SP. On the evolutionary epidemiology of SARS-CoV-2. *Curr Biol* 2020. 10.1016/j.cub.2020.06.031.
27. Segovia-Juarez J, Castagnetto JM, Gonzales GF. High altitude reduces infection rate of COVID-19 but not case-fatality rate. *Respir Physiol Neurobiol* 2020; **281**: 103494. 10.1016/j.resp.2020.103494.
28. Sudharsanan N, Didzun O, Barnighausen T, Geldsetzer P. The Contribution of the Age Distribution of Cases to COVID-19 Case Fatality Across Countries: A 9-Country Demographic Study. *Ann Intern Med* 2020. 10.7326/M20-2973.
29. Esteve A, Permanyer I, Boertien D, Vaupel JW. National age and coresidence patterns shape COVID-19 vulnerability. *Proc Natl Acad Sci U S A* 2020; **117**(28): 16118-20. 10.1073/pnas.2008764117.
30. Afsar B, Kanbay M, Afsar RE. Hypoxia inducible factor-1 protects against COVID-19: A hypothesis. *Med Hypotheses* 2020; **143**: 109857. 10.1016/j.mehy.2020.109857.
31. Arias-Reyes C, Zubieta-DeUrioste N, Poma-Machicao L, *et al.* Does the pathogenesis of SARS-CoV-2 virus decrease at high-altitude? *Respir Physiol Neurobiol* 2020; **277**: 103443. 10.1016/j.resp.2020.103443.
32. Zeng J, Peng S, Lei Y, *et al.* Clinical and Imaging features of COVID-19 Patients: Analysis of Data from High-Altitude Areas. *J Infect* 2020; **80**(6): e34-e6. 10.1016/j.jinf.2020.03.026.
33. Ciceri F, Castagna A, Rovere-Querini P, *et al.* Early predictors of clinical outcomes of COVID-19 outbreak in Milan, Italy. *Clin Immunol* 2020; **217**: 108509. 10.1016/j.clim.2020.108509.

34. Segura Vega L, Régulo Agusti R, Enrique Ruiz Mori E, Study obotTI. Factores de riesgo de las enfermedades cardiovasculares en el Perú II. Estudio TORNASOL II comparado con TORNASOL I después de cinco años. *Rev Peru Cardiol* 2013; **1**: 5-59
35. INEI. Mapa de pobreza provincial y distrital 2018. Informatica INdEe. 2020.
https://www.inei.gov.pe/media/MenuRecursivo/publicaciones_digitales/Est/Lib1718/Libro.pdf.
36. Breevoort A, Carosso GA, Mostajo-Radji MA. High-altitude populations need special considerations for COVID-19. *Nat Commun* 2020; **11**(1): 3280. 10.1038/s41467-020-17131-6.
37. Semple JL, Moore GWK. High levels of ambient ozone (O₃) may impact COVID-19 in high altitude mountain environments. *Respir Physiol Neurobiol* 2020; **280**: 103487. 10.1016/j.resp.2020.103487.
38. Burtscher J, Burtscher M, Millet GP. Caution is needed on the effect of altitude on the pathogenesis of SAR-CoV-2 virus. *Respir Physiol Neurobiol* 2020; **279**: 103464. 10.1016/j.resp.2020.103464.
39. Huamani C, Velasquez L, Montes S, Miranda-Solis F. Propagation by COVID-19 at high altitude: Cusco case. *Respir Physiol Neurobiol* 2020; **279**: 103448. 10.1016/j.resp.2020.103448.
40. Choquenaira-Quispe C, Saldana-Bobadilla V, Ramirez JK. Factors involved in low susceptibility to COVID-19: An adaptation of high altitude inhabitants. *Med Hypotheses* 2020; **143**: 110068. 10.1016/j.mehy.2020.110068.
41. Miranda JJ, Bernabe-Ortiz A, Gilman RH, *et al*. Multimorbidity at sea level and high-altitude urban and rural settings: The CRONICAS Cohort Study. *J Comorbidity* 2019; **9**: 1-10. 10.1177/2235042X19875297.
42. Bernabe-Ortiz A, Carrillo-Larco RM, Gilman RH, *et al*. Contribution of modifiable risk factors for hypertension and type-2 diabetes in Peruvian resource-limited settings. *J Epidemiol Community Health* 2016; **70**(1): 49-55. 10.1136/jech-2015-205988.
43. Lloyd-Smith JO, Schreiber SJ, Kopp PE, Getz WM. Superspreading and the effect of individual variation on disease emergence. *Nature* 2005; **438**(7066): 355-9. 10.1038/nature04153.
44. On Kwok K, Hin Chan HH, Huang Y, *et al*. Inferring super-spreading from transmission clusters of COVID-19 in Hong Kong, Japan and Singapore. *J Hosp Infect* 2020. 10.1016/j.jhin.2020.05.027.
45. Adam D, Wu P, Wong J, *et al*. Clustering and superspreading potential of severe acute respiratory syndrome coronavirus 2 (SARS-CoV-2) infections in Hong Kong. *Res Square* 2020. 10.21203/rs.3.rs-29548/v1.
46. Suárez-Ognio L, Arrasco J, Gómez J, *et al*. Mortality associated with influenza A H N in Peru during the pandemic from 2009 to 2010. *Rev Peru Epidemiol* 2011; **15**(1): 1-7
47. Loth L, Gilbert M, Wu J, Czarnecki C, Hidayat M, Xiao X. Identifying risk factors of highly pathogenic avian influenza (H5N1 subtype) in Indonesia. *Prev Vet Med* 2011; **102**(1): 50-8. 10.1016/j.prevetmed.2011.06.006.
48. Gilbert M, Chaitaweesub P, Parakamawongsa T, *et al*. Free-grazing ducks and highly pathogenic avian influenza, Thailand. *Emerg Infect Dis* 2006; **12**(2): 227-34. 10.3201/eid1202.050640.

49. Berry LJ, Mitchell RB, Rubenstein D. Effect of acclimatization to altitude on susceptibility of mice to influenza A virus infection. *Proc Soc Exp Biol Med* 1955; **88**(4): 543-8. 10.3181/00379727-88-21646.
50. Moore LG. Measuring high-altitude adaptation. *J Appl Physiol* (1985) 2017; **123**(5): 1371-85. 10.1152/jappphysiol.00321.2017.
51. Bigham AW, Lee FS. Human high-altitude adaptation: forward genetics meets the HIF pathway. *Genes Dev* 2014; **28**(20): 2189-204. 10.1101/gad.250167.114.
52. Azad P, Stobdan T, Zhou D, *et al.* High-altitude adaptation in humans: from genomics to integrative physiology. *J Mol Med (Berl)* 2017; **95**(12): 1269-82. 10.1007/s00109-017-1584-7.
53. Brutsaert TD, Kiyamu M, Elias Revollendo G, *et al.* Association of EGLN1 gene with high aerobic capacity of Peruvian Quechua at high altitude. *Proc Natl Acad Sci U S A* 2019; **116**(48): 24006-11. 10.1073/pnas.1906171116.
54. Lorenzo FR, Huff C, Myllymaki M, *et al.* A genetic mechanism for Tibetan high-altitude adaptation. *Nat Genet* 2014; **46**(9): 951-6. 10.1038/ng.3067.
55. Scheinfeldt LB, Soi S, Thompson S, *et al.* Genetic adaptation to high altitude in the Ethiopian highlands. *Genome Biol* 2012; **13**(1): R1. 10.1186/gb-2012-13-1-r1.
56. Semenza GL. Hypoxia-inducible factors in physiology and medicine. *Cell* 2012; **148**(3): 399-408. 10.1016/j.cell.2012.01.021.
57. Hoffmann M, Kleine-Weber H, Schroeder S, *et al.* SARS-CoV-2 Cell Entry Depends on ACE2 and TMPRSS2 and Is Blocked by a Clinically Proven Protease Inhibitor. *Cell* 2020; **181**(2): 271-80 e8. 10.1016/j.cell.2020.02.052.
58. Mohamed TL, Nguyen HT, Abdul-Hafez A, *et al.* Prior hypoxia prevents downregulation of ACE-2 by hyperoxia in fetal human lung fibroblasts. *Exp Lung Res* 2016; **42**(3): 121-30. 10.3109/01902148.2016.1157712.
59. Joshi S, Wollenzien H, Leclerc E, Jarajapu YP. Hypoxic regulation of angiotensin-converting enzyme 2 and Mas receptor in human CD34(+) cells. *J Cell Physiol* 2019; **234**(11): 20420-31. 10.1002/jcp.28643.
60. Zhang R, Wu Y, Zhao M, *et al.* Role of HIF-1alpha in the regulation ACE and ACE2 expression in hypoxic human pulmonary artery smooth muscle cells. *Am J Physiol Lung Cell Mol Physiol* 2009; **297**(4): L631-40. 10.1152/ajplung.90415.2008.
61. Fernandez EV, Reece KM, Ley AM, *et al.* Dual targeting of the androgen receptor and hypoxia-inducible factor 1alpha pathways synergistically inhibits castration-resistant prostate cancer cells. *Mol Pharmacol* 2015; **87**(6): 1006-12. 10.1124/mol.114.097477.
62. Kleinsasser A, Pircher I, Trembl B, *et al.* Recombinant angiotensin-converting enzyme 2 suppresses pulmonary vasoconstriction in acute hypoxia. *Wilderness Environ Med* 2012; **23**(1): 24-30. 10.1016/j.wem.2011.09.002.
63. Pun M, Turner R, Strapazzon G, Brugger H, Swenson ER. Lower Incidence of COVID-19 at High Altitude: Facts and Confounders. *High Alt Med Biol* 2020. 10.1089/ham.2020.0114.
64. Jakus Z, Gleghorn JP, Enis DR, *et al.* Lymphatic function is required prenatally for lung inflation at birth. *J Exp Med* 2014; **211**(5): 815-26. 10.1084/jem.20132308.
65. Reed HO, Wang L, Sonett J, *et al.* Lymphatic impairment leads to pulmonary tertiary lymphoid organ formation and alveolar damage. *J Clin Invest* 2019; **129**(6): 2514-26. 10.1172/JCI125044.

66. Morfoisse F, Kuchnio A, Frainay C, *et al.* Hypoxia induces VEGF-C expression in metastatic tumor cells via a HIF-1alpha-independent translation-mediated mechanism. *Cell Rep* 2014; **6**(1): 155-67. 10.1016/j.celrep.2013.12.011.
67. Murtomaki A, Uh MK, Choi YK, *et al.* Notch1 functions as a negative regulator of lymphatic endothelial cell differentiation in the venous endothelium. *Development* 2013; **140**(11): 2365-76. 10.1242/dev.083865.
68. McClendon J, Jansing NL, Redente EF, *et al.* Hypoxia-Inducible Factor 1alpha Signaling Promotes Repair of the Alveolar Epithelium after Acute Lung Injury. *Am J Pathol* 2017; **187**(8): 1772-86. 10.1016/j.ajpath.2017.04.012.
69. Eckle T, Brodsky K, Bonney M, *et al.* HIF1A reduces acute lung injury by optimizing carbohydrate metabolism in the alveolar epithelium. *PLoS Biol* 2013; **11**(9): e1001665. 10.1371/journal.pbio.1001665.
70. Strapazzon G, Hilty MP, Bouzat P, Pratali L, Brugger H, Rauch S. To compare the incomparable: COVID-19 pneumonia and high-altitude disease. *Eur Respir J* 2020; **55**(6). 10.1183/13993003.01362-2020.
71. Luks AM, Swenson ER. COVID-19 Lung Injury and High Altitude Pulmonary Edema: A False Equation with Dangerous Implications. *Ann Am Thorac Soc* 2020. 10.1513/AnnalsATS.202004-327FR.
72. Dorward DA, Russell CD, Um IH, *et al.* Tissue-specific tolerance in fatal Covid-19. *medRxiv* 2020: 2020.07.02.20145003. 10.1101/2020.07.02.20145003.
73. Ackermann M, Verleden SE, Kuehnel M, *et al.* Pulmonary Vascular Endothelialitis, Thrombosis, and Angiogenesis in Covid-19. *N Engl J Med* 2020; **383**(2): 120-8. 10.1056/NEJMoa2015432.
74. Swenson ER, Maggiorini M, Mongovin S, *et al.* Pathogenesis of high-altitude pulmonary edema: inflammation is not an etiologic factor. *JAMA* 2002; **287**(17): 2228-35. 10.1001/jama.287.17.2228.
75. Gupta A, Madhavan MV, Sehgal K, *et al.* Extrapulmonary manifestations of COVID-19. *Nat Med* 2020. 10.1038/s41591-020-0968-3.
76. Vabret N, Britton GJ, Gruber C, *et al.* Immunology of COVID-19: Current State of the Science. *Immunity* 2020; **52**(6): 910-41. 10.1016/j.immuni.2020.05.002.
77. Iba T, Levy JH, Levi M, Thachil J. Coagulopathy in COVID-19. *J Thromb Haemost* 2020. 10.1111/jth.14975.
78. Krzywinska E, Stockmann C. Hypoxia, Metabolism and Immune Cell Function. *Biomedicines* 2018; **6**(2). 10.3390/biomedicines6020056.
79. Horscroft JA, Kotwica AO, Laner V, *et al.* Metabolic basis to Sherpa altitude adaptation. *Proc Natl Acad Sci U S A* 2017; **114**(24): 6382-7. 10.1073/pnas.1700527114.
80. Watts ER, Walmsley SR. Inflammation and Hypoxia: HIF and PHD Isoform Selectivity. *Trends Mol Med* 2019; **25**(1): 33-46. 10.1016/j.molmed.2018.10.006.
81. Koh MY, Powis G. Passing the baton: the HIF switch. *Trends Biochem Sci* 2012; **37**(9): 364-72. 10.1016/j.tibs.2012.06.004.
82. Palazon A, Goldrath AW, Nizet V, Johnson RS. HIF transcription factors, inflammation, and immunity. *Immunity* 2014; **41**(4): 518-28. 10.1016/j.immuni.2014.09.008.

83. Zatterale F, Longo M, Naderi J, *et al.* Chronic Adipose Tissue Inflammation Linking Obesity to Insulin Resistance and Type 2 Diabetes. *Front Physiol* 2019; **10**: 1607. 10.3389/fphys.2019.01607.
84. Qing H, Desrouleaux R, Israni-Winger K, *et al.* Origin and Function of Stress-Induced IL-6 in Murine Models. *Cell* 2020; **182**(2): 372-87 e14. 10.1016/j.cell.2020.05.054.
85. Soliz J, Schneider-Gasser EM, Arias-Reyes C, *et al.* Coping with hypoxemia: Could erythropoietin (EPO) be an adjuvant treatment of COVID-19? *Respir Physiol Neurobiol* 2020; **279**: 103476. 10.1016/j.resp.2020.103476.
86. Suresh S, Rajvanshi PK, Noguchi CT. The Many Facets of Erythropoietin Physiologic and Metabolic Response. *Front Physiol* 2019; **10**: 1534. 10.3389/fphys.2019.01534.
87. Nairz M, Schroll A, Moschen AR, *et al.* Erythropoietin contrastingly affects bacterial infection and experimental colitis by inhibiting nuclear factor-kappaB-inducible immune pathways. *Immunity* 2011; **34**(1): 61-74. 10.1016/j.immuni.2011.01.002.
88. Soliz J, Gassmann M, Joseph V. Soluble erythropoietin receptor is present in the mouse brain and is required for the ventilatory acclimatization to hypoxia. *J Physiol* 2007; **583**(Pt 1): 329-36. 10.1113/jphysiol.2007.133454.
89. Vizcardo-Galindo G, Leon-Velarde F, Villafuerte FC. High-Altitude Hypoxia Decreases Plasma Erythropoietin Soluble Receptor Concentration in Lowlanders. *High Alt Med Biol* 2020; **21**(1): 92-8. 10.1089/ham.2019.0118.
90. Villafuerte FC, Macarlupu JL, Anza-Ramirez C, *et al.* Decreased plasma soluble erythropoietin receptor in high-altitude excessive erythrocytosis and Chronic Mountain Sickness. *J Appl Physiol (1985)* 2014; **117**(11): 1356-62. 10.1152/jappphysiol.00619.2014.
91. Ayres JS. A metabolic handbook for the COVID-19 pandemic. *Nat Metab* 2020. 10.1038/s42255-020-0237-2.
92. Kudo E, Song E, Yockey LJ, *et al.* Low ambient humidity impairs barrier function and innate resistance against influenza infection. *Proc Natl Acad Sci U S A* 2019; **116**(22): 10905-10. 10.1073/pnas.1902840116.
93. Makinen TM, Juvonen R, Jokelainen J, *et al.* Cold temperature and low humidity are associated with increased occurrence of respiratory tract infections. *Respir Med* 2009; **103**(3): 456-62. 10.1016/j.rmed.2008.09.011.
94. Hsu KF, Wilkins SE, Hopkinson RJ, *et al.* Hypoxia and hypoxia mimetics differentially modulate histone post-translational modifications. *Epigenetics* 2020: 1-14. 10.1080/15592294.2020.1786305.
95. Weinstein MC, Freedberg KA, Hyle EP, Paltiel AD. Waiting for Certainty on Covid-19 Antibody Tests - At What Cost? *N Engl J Med* 2020. 10.1056/NEJMp2017739.
96. Bobrovitz N, Arora RK, Yan T, *et al.* Lessons from a rapid systematic review of early SARS-CoV-2 serosurveys. *medRxiv* 2020. 10.1101/2020.05.10.20097451.
97. Pollán M, Pérez-Gómez B, Pastor-Barriuso R, *et al.* Prevalence of SARS-CoV-2 in Spain (ENE-COVID): a nationwide, population-based seroepidemiological study. *Lancet* 2020:
98. Stadlbauer D, Tan J, Jiang K, *et al.* Seroconversion of a city: Longitudinal monitoring of SARS-CoV-2 seroprevalence in New York City. *medRxiv* 2020. 10.1101/2020.06.28.20142190.

99. Pajuelo Ramírez J, Torres Aparcana L, Agüero Zamora R, Bernui Leo I. Overweight, obesity and abdominal obesity in the adult population of Peru. *An Fac Med* 2019; **80**(1): 21-7. 10.15381/anales.v80i1.15863.
100. INEI. Perú: Enfermedades No Transmisibles y Transmisibles. Informatica INdEe. 2019.
https://www.inei.gob.pe/media/MenuRecursivo/publicaciones_digitales/Est/Lib1526/index.html.
101. Altman DG. Confidence intervals for the number needed to treat. *BMJ* 1998; **317**(7168): 1309-12. 10.1136/bmj.317.7168.1309.

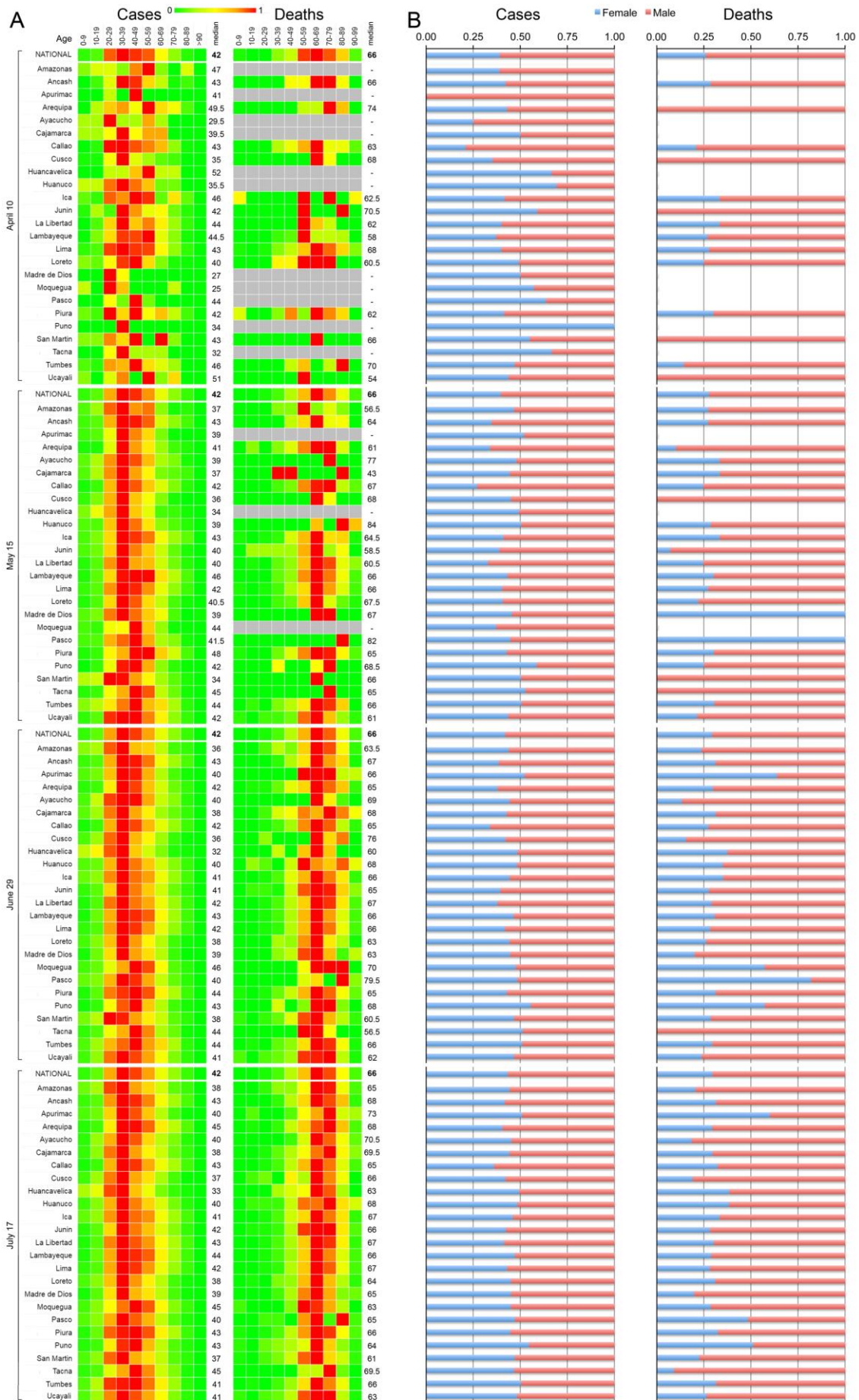


Figure 1. Longitudinal distribution of COVID-19 cases and deaths in Peru accumulated on four cut-off dates, by department, age range and sex. A. Heatmap of frequencies of distributions of cumulative cases and deaths at each of the indicated dates for the indicated age ranges and departments. Median ages for cases and deaths for each department and each cut-off date are shown to the right of the heatmaps. Nationwide heatmaps corresponding to age range distribution frequencies and median ages are also shown for each date. **B.** Histograms of relative frequencies of cumulative male and female cases and deaths on the indicated dates at each department (as indicated in panel A). Nationwide female:male relative frequencies are also shown for each date.

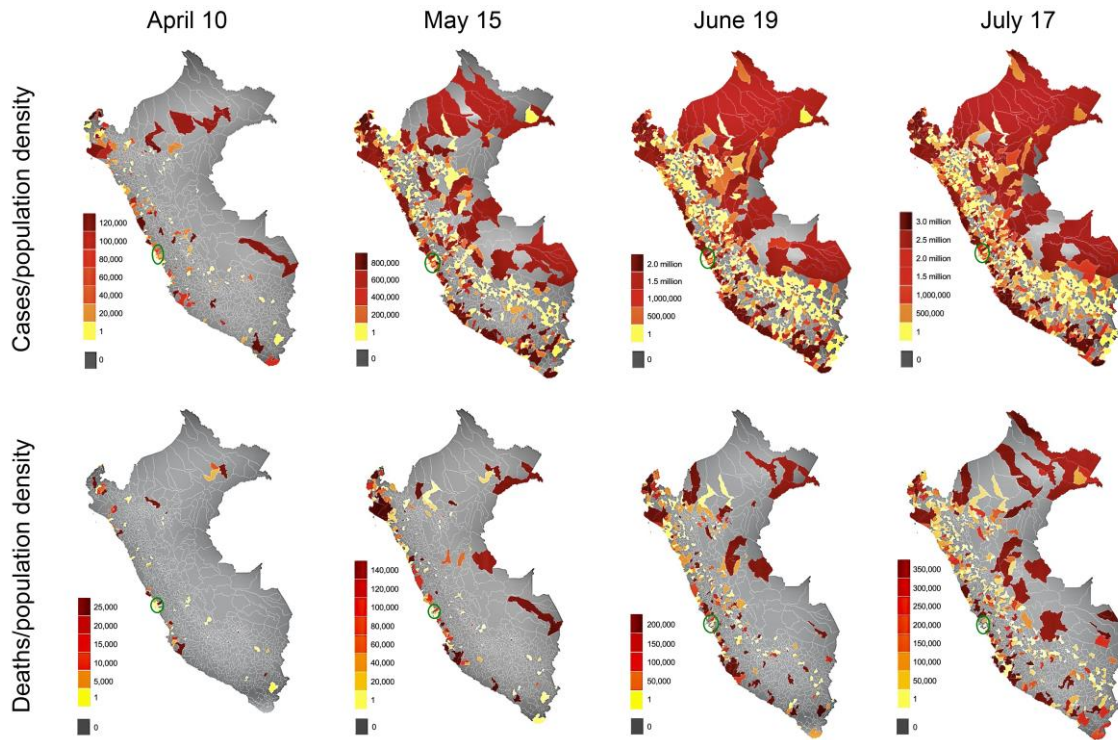


Figure 2. District-level map of case and death rates in Peru, normalized for population density. Cumulative COVID-19 case and death rates per population density [cases or deaths/(persons/Km²)] on each of the indicated cut-off dates are mapped at the district level. Heatmaps and their equivalencies are specific for each date. The numbers indicate the upper limits of value ranges, and the lower limits correspond to the preceding number. Blue circles are indicators of the Lima metropolitan region.

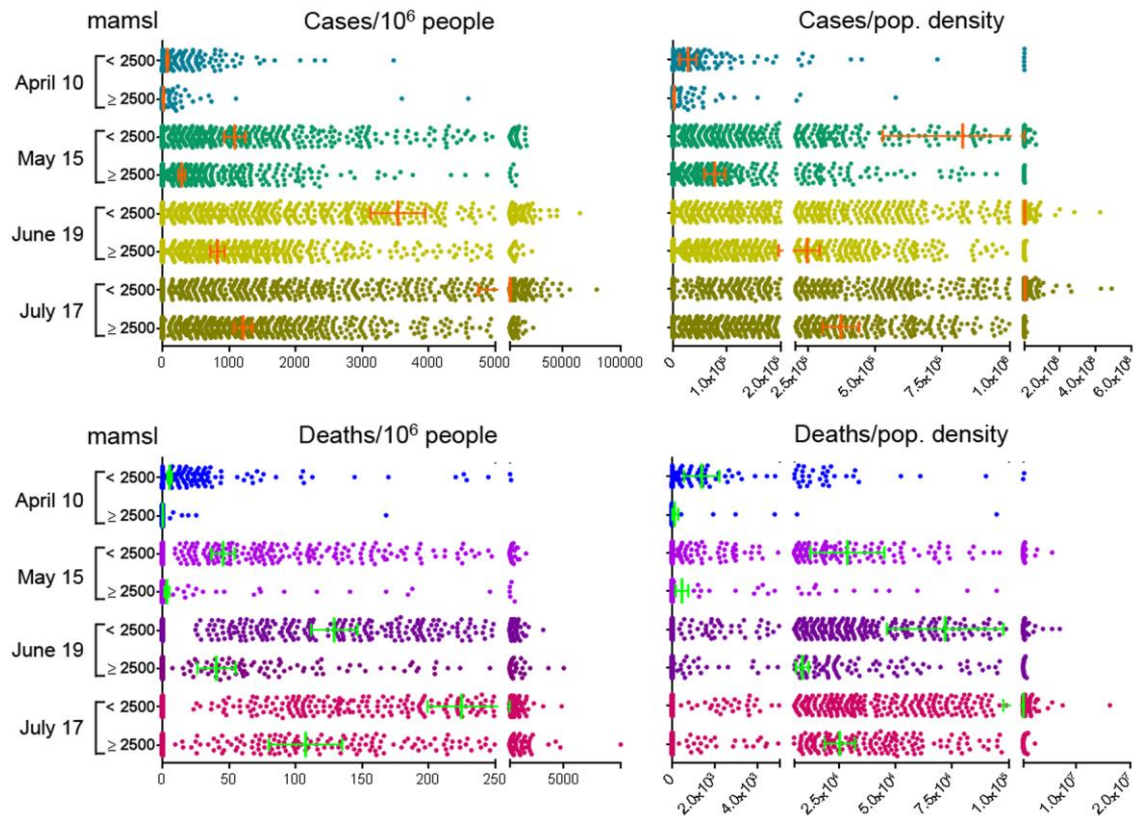


Figure 3. Distribution of case and death rates per million people or population density in districts located below or above 2,500 m of altitude. Cumulative deaths and cases per 10⁶ population or population density were plotted on each of the 4 indicated dates. Green and orange vertical lines denote mean values and horizontal lines 95% confidence intervals. All pairwise comparisons between low- and high- altitude strata on all 4 dates yielded P values < 0.0001 (Mann-Whitney nonparametric test). mamsl, meters above mean sea level.

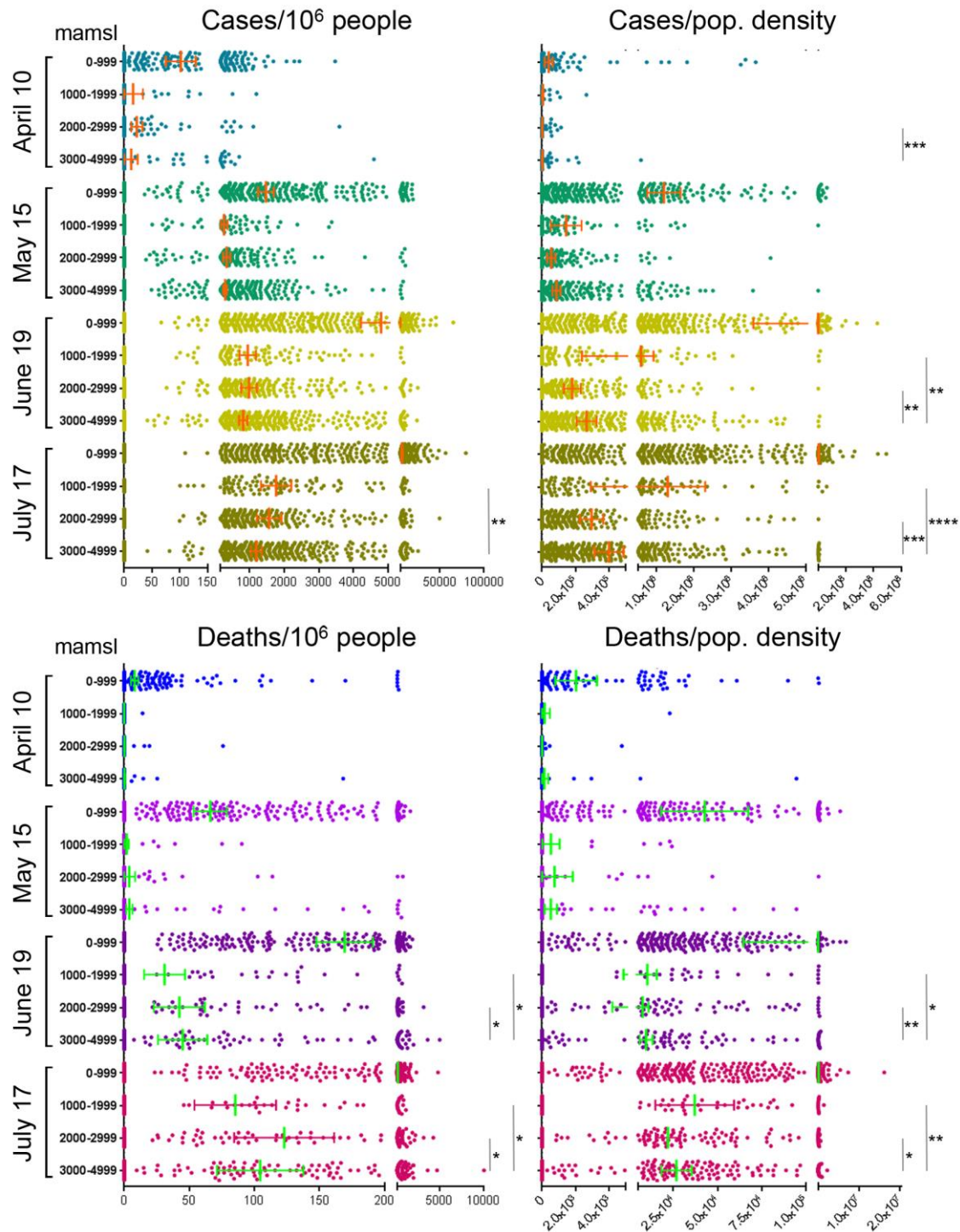


Figure 4. Distribution of case and death rates per million people or population density in districts stratified at 1,000 m intervals. Green and orange vertical lines denote mean values and horizontal lines 95% confidence intervals. P value ranges are denoted as asterisks: *, < 0.05; **, < 0.001; ***, < 0.0001. (Mann-Whitney nonparametric test). Not shown are significant level indicators for comparisons between case or death rates between the 0-999 m interval and all other altitude intervals on all dates, all highly significant (< 0.0001). The x-axes were segmented for better visualization.

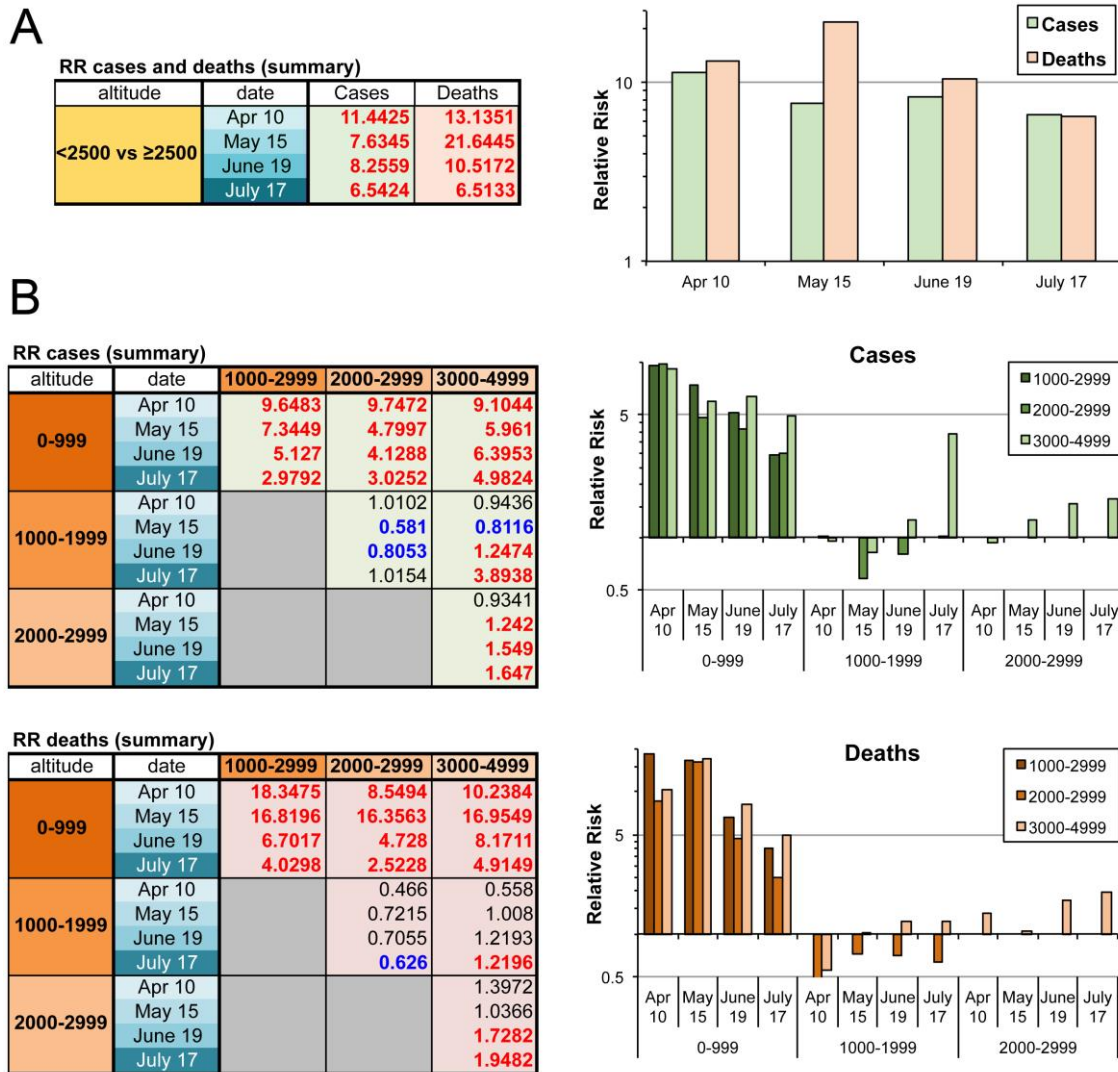


Figure 5. Relative risks for SARS-CoV-2 positivity and death from COVID-19 in comparisons between low-altitude vs. high altitude districts (as extracted from Table S1). A. Left panel, table of relative risk values calculated for cumulative registered cases and deaths in districts below or above 2,500 m on the indicated dates. Given the uncertainty of the testing coverage, total populations in each altitude range were used as surrogate control groups in these calculations. Right panel, graphical representation of the values on the left table. B. Left panels, tables of relative risk values calculated for cumulative cases and deaths in districts at 1,000-m altitude intervals. Total populations in each altitude range were used as surrogate control groups. Right panels, graphical representations of the values on the left tables. Logarithmic scales were applied in the y axes for improved visualization of negative relative risk values. In all tables, values in bold are significant, red fonts denote increased relative risk for districts in the altitude range in the leftmost columns and blue fonts denote decreased relative risk in the corresponding pairwise comparisons. Values in regular font denote non-significant relative risks. Confidence intervals and p values are detailed in Table S1.

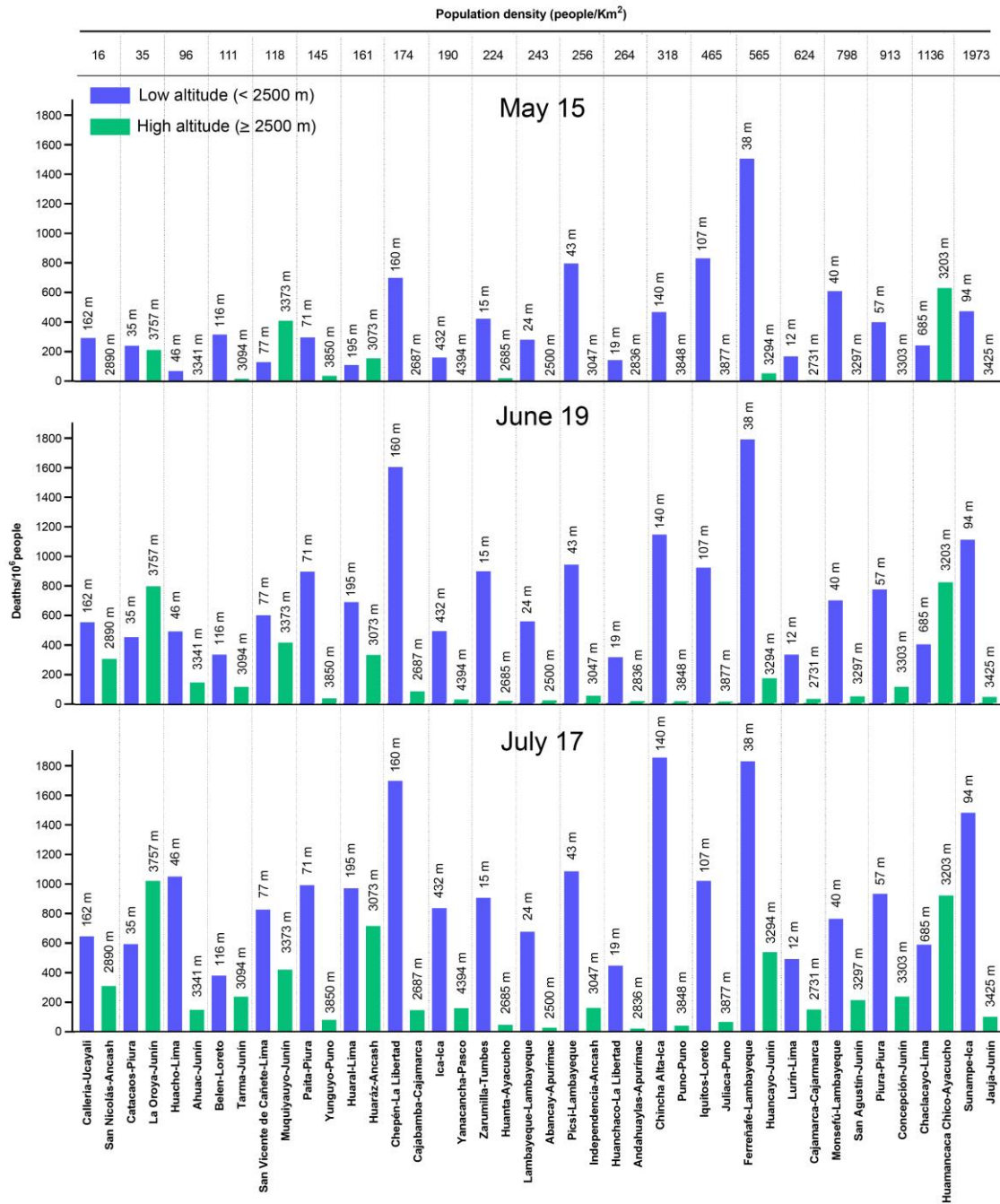


Figure 6. Pairwise comparisons for cumulative death rates between districts with equivalent population densities located at high or low altitudes. Death rates were compared in paired low- (< 2,500 m) and high-altitude (≥ 2,500 m) districts of similar population density (5% maximum difference). Comparisons were made at cut-off points May 15, June 19, and July 17.

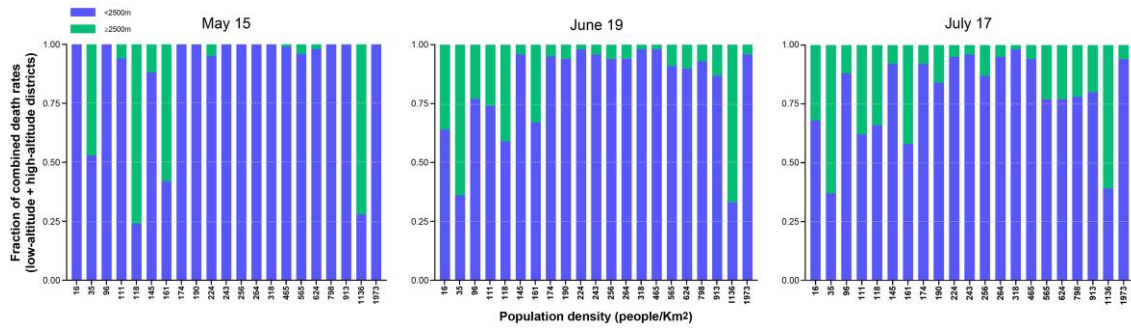


Figure 7. Graphical representation of fractions of combined death rates of population density-paired low-altitude vs. high-altitude districts. To illustrate the contribution of low and high-altitude districts of each pair, the fractional composition for all pairwise comparisons in Figure 6 was calculated as the number of deaths per million of each district, divided by the total number of deaths at each population density category.

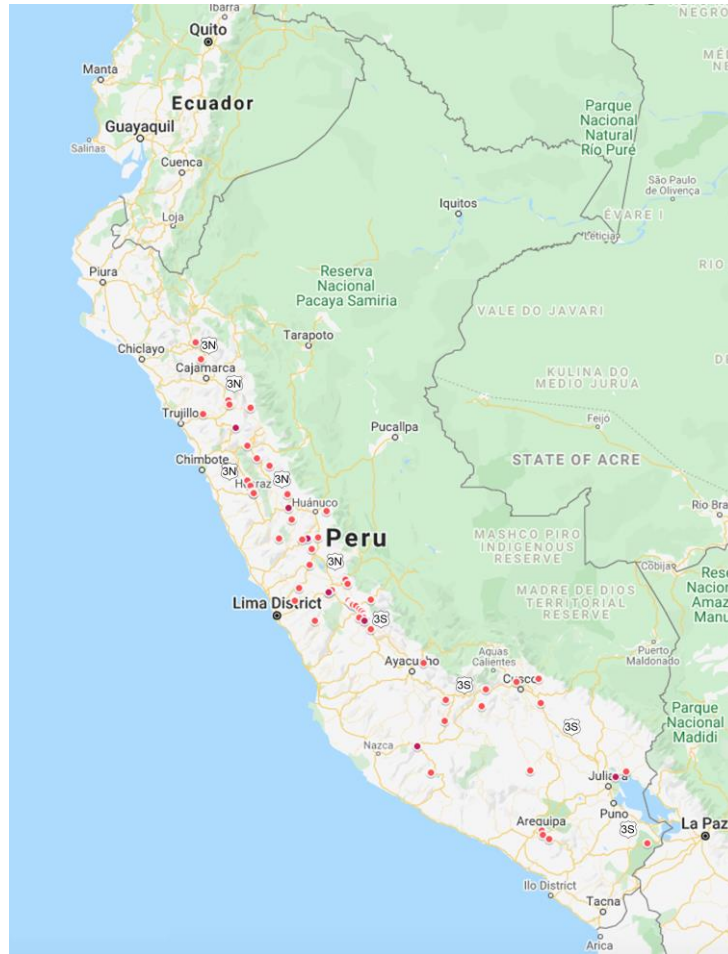


Figure 8. Geographical mapping of high-altitude districts with high death rates. All districts above 2,500 m of altitude with registered death rates $\geq 50/10^6$ people between May 16 through June 19, 2020 were mapped with the GoogleMyMaps online application. Highway 3N/3S is indicated at various points on the map. An interactive map can be accessed at <https://www.google.com/maps/d/edit?mid=1VVUxIS9bz0rj-ChtbpGTQ0tUSs27TKWL&usp=sharing>.

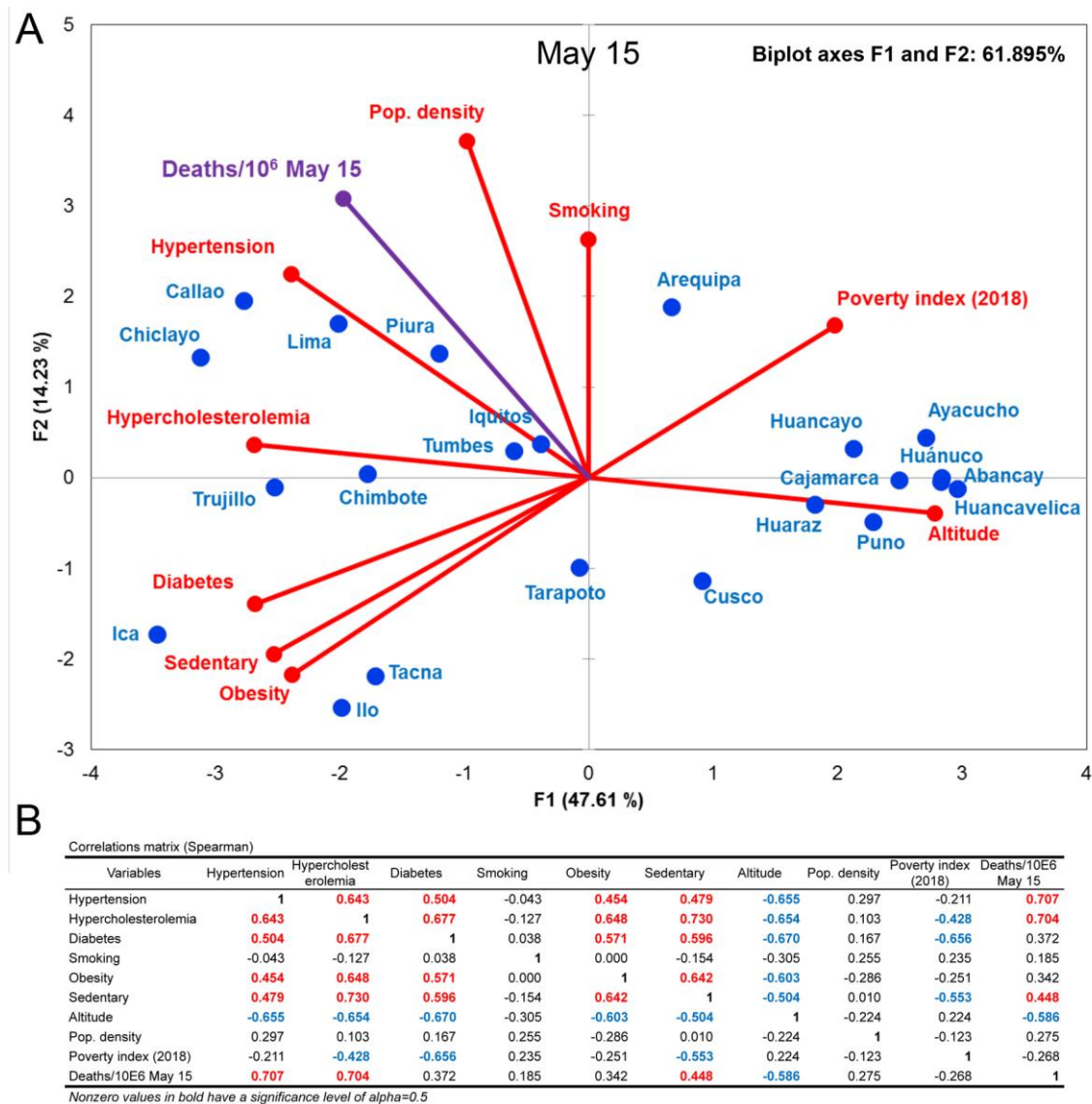


Figure 10. Correlation analyses of COVID-19 death rates, non-transmissible morbidity prevalence and altitude in major Peruvian cities.
A. Principal component analysis of COVID-19 deaths registered from May 15 through June 19 (rates per 10⁶ population), together with morbidity prevalence, altitude and poverty index. **B.** Correlation analysis between variables. Values in bold are significant (alpha = 0.5; p ≤ 0.05). In red, positive correlation. In blue, negative correlation. P values for each correlation factor are provided in Table S5.