

Containing the Spread of Infectious Disease on College Campuses

Mirai Shah¹, Gabrielle Ferra², Susan Fitzgerald³, Paul J. Barreira⁴, Pardis C. Sabeti^{5,6,7,8}, Andres Colubri^{5,6,7,9*}

¹ Harvard College, Cambridge, MA, USA

² Brown University, Providence, RI, USA

³ Harvard University Health Services, Cambridge, MA, USA

⁴ Harvard Medical School, Boston, MA, USA

⁵ Harvard University, Department of Organismic and Evolutionary Biology, Cambridge, MA, USA

⁶ Broad Institute of MIT and Harvard, Cambridge, MA, USA

⁷ Howard Hughes Medical Institute, Chevy Chase, MD, USA

⁸ Harvard School of Public Health, Boston, MA, USA

⁹ University of Massachusetts Medical School, Worcester, MA, USA

* Corresponding author: andres.colubri@umassmed.edu

Abstract

College campuses are highly vulnerable to infectious diseases outbreaks, and there is a mounting need to develop strategies to mitigate their size and duration, particularly as educational institutions around the world reopen to in-person instruction in the midst of the COVID-19 pandemic. Towards addressing this need, we applied a stochastic compartmental model to quantify the impact of university-level responses to past mumps outbreaks on college campuses and used it to determine which control interventions are most effective. Mumps is a highly relevant disease in these settings, given its mode of transmission, high infectivity, and availability of a vaccine. Our model aims to simultaneously overcome three crucial issues: stochastic variation in small populations, missing or unobserved case data, and changes in disease transmission rates post-intervention. We tested the model and assessed various interventions using data from the 2014 and 2016 mumps outbreaks at Ohio State University and Harvard University, respectively. Our results suggest that universities should design more aggressive diagnostic procedures and stricter isolation policies to decrease infectious disease incidence on campus. Our model can be applied to data from other outbreaks in college campuses and similar small-population settings.

Keywords: Infectious disease, mumps outbreak, college campus, stochastic SEIR model, public health intervention, Harvard University

1 INTRODUCTION

2 The ongoing COVID-19 pandemic has forced school closures around the world (1), and
3 universities in the United States and elsewhere are designing plans for safe reopening (2, 3). This
4 is a challenging task, as college campuses provide ideal breeding grounds for infectious disease.
5 Students live in close quarters, pack into lecture halls, share food and drinks in the dining areas,
6 and engage in intimate contact. Outbreaks in these settings can spread very quickly. Indeed, a
7 meningitis outbreak took place at Princeton University in March 2014, eventually claiming the life
8 of one student. The Centers for Disease Control and Prevention (CDC) reported the attack rate of
9 the disease on Princeton’s campus to be 134 per 100,000 students – 1,400 times greater than the
10 national average (4).

11 A recent string of outbreaks on college campuses involves mumps, once a common
12 childhood viral disease. After introduction of the measles-mumps-rubella (MMR) vaccine in 1977
13 and the two-dose MMR vaccination program in 1989, the number of mumps cases in the US
14 plummeted by 2005. But, despite a vaccinated population, there has been a recent resurgence of
15 mumps, with a steep jump from 229 cases in 2012 to 5833 cases in 2016 (5). Although a typically
16 mild disease in children, up to 10% of mumps infections acquired after puberty can cause severe
17 complications, including orchitis, meningitis, and deafness. Furthermore, a majority of recent
18 mumps cases have occurred in young adults who had received the recommended two MMR doses.
19 This suggests that vaccine-derived immunity wanes over time, unlike natural immunity –
20 protection acquired from contracting the disease – which is permanent. Lewnard and Grad estimate
21 that 33.8% of young adults (ages 20 to 24) were susceptible to mumps in 1990, in contrast to the
22 52.8% susceptible in 2006, as vaccinations have replaced contraction as the source of immunity
23 (6). The temporary immunity from vaccines strengthens the argument for strict containment as a

24 critical line of defense amidst an outbreak. In the case of COVID-19, even with the availability of
25 several vaccines (7), the challenges associated with their wide and quick distribution (8), the
26 substantial asymptomatic and pre-symptomatic transmission of the disease (9), and the possibility
27 of new viral strains with higher transmissibility (10) provide further support for such approaches.

28 The spread of mumps at Harvard University in 2016, and extensive public health measures
29 and documentation, presents a rare opportunity to closely examine an outbreak on a college
30 campus. Between January 1 and August 31, 2016, 210 confirmed mumps cases were identified in
31 the Greater Boston area, with most detected at Harvard University. Mumps is a highly contagious
32 disease with the potential to travel quickly and pervasively on a crowded college campus. Some
33 of the most notable mumps outbreaks on college campuses occurred in Iowa (11), Indiana (12),
34 and Ohio (13). But, whereas mumps spread rapidly at Ohio State University (OSU) in 2014 and
35 the University of Iowa in 2006 and 2016, Harvard employed a number of interventions that may
36 have helped mitigate spread of the disease and contain it over just a few months (14). The
37 possibility of distinct viral strains resulting in different outbreak dynamics between schools can be
38 safely dismissed. It has been shown that all mumps outbreaks in the US for the last 15 years were
39 likely caused by the same mumps lineage, mumps virus genotype G (15).

40 The successful containment at Harvard motivates us to explore varied intervention
41 strategies, given the relative costs of prevention. Even if the use of a booster MMR vaccination is
42 proven theoretically to reduce infection and thus potentially prevent outbreaks (6, 11), it is unlikely
43 that universities with limited resources will proactively invest in a third dose. A rough cost analysis
44 conducted by Harvard University Health Services (HUHS) showed that, while the total mumps
45 care expenses for Harvard was approximately \$75,000, the cost of providing a third MMR dose to
46 every member of the Harvard community (at \$83 per vaccination) was \$1.7 million (16). Therefore,

47 at least in the short term, a third MMR dose cannot be the only answer to handling mumps
48 outbreaks; we must consider more immediate solutions and interventions.

49 In order to understand the effectiveness of interventions aimed at containing an outbreak
50 on a college campus, we constructed an epidemiological model to simulate the dynamics of mumps
51 on such a population and quantify the impact of various interventions. Most epidemiological
52 models have at least one of three flaws: they cannot handle random fluctuations in a small
53 population, require complete data without unobserved or missing cases, or do not accommodate
54 time-varying infection or recovery rates as a result of dynamically changing interventions. The
55 modified stochastic susceptible-exposed-infectious-recovered (SEIR) model presented in this
56 paper addresses these three issues. We developed this model within the framework of a Partially
57 Observed Markov Process (POMP), which has been applied to introduce structural stochasticity
58 into epidemic models (17). We fit model parameters on case data for Harvard's 2016 mumps
59 outbreak provided by the Massachusetts Department of Public Health (MDPH). We compared it
60 to data from OSU, one of the few universities that had extensive publicly available data through
61 the CDC.

62 In applying our model, we found that each of the interventions employed by HUHS -- email
63 awareness campaigns, more aggressive diagnoses where clinical symptoms alone were enough to
64 result in quarantine, and strict isolation of suspected cases -- were crucial in reducing the size and
65 duration of the outbreak. In particular, Harvard's policies drastically increased the reporting rate
66 of infection and shortened the time a person remains infectious in a susceptible population, relative
67 to the baseline. As a result, one mumps case at Harvard infected less than two susceptible
68 individuals on average, and much less once aggressive diagnosis was in place, compared to cases
69 at non-residential schools like OSU, in which one mumps case infected an average of six

70 susceptible individuals. However, the OSU data suggests that self-isolation could be effective, if
71 adopted rigorously by students. The conclusions from this paper could guide future responses to
72 infectious disease outbreaks on college campuses. Without effective measures in place, highly
73 transmissible diseases like mumps, meningitis, and now COVID-19, spread in these environments
74 at much faster rates than in the overall population and can lead to serious health complications.
75 Simple interventions that ensure most cases are detected, treated, and separated from susceptible
76 individuals make a significant difference.
77

78 **2. MATERIALS AND METHODS**

79

80 **2.1 Harvard mumps outbreak**

81 **2.1.1 Data**

82 The mumps outbreak at Harvard began in February 2016, when six students reported onset of
83 parotitis to HUHS. For the next three months, the number of cases continued to rise, until finally
84 plateauing in late May and early June. There were two waves of the outbreak – one occurring in
85 the month of March and a larger one occurring in mid-April – totaling 189 confirmed and probable
86 cases (Figure 1). Confirmed cases are those with a positive laboratory test for mumps virus.
87 Probable cases are those who either tested positive for the anti-mumps IgM antibody or had an
88 epidemiologic linkage to another probable or confirmed case (18, 19). The majority of these cases
89 received the recommended two doses of MMR (20).

90 We use data provided by MDPH, which documented every mumps case between 2015 and
91 2017 at schools across Massachusetts (21). This data includes demographics of the patient (gender,
92 age, county, and institution), symptoms and vaccination status, date they reported their symptoms
93 and the date of symptom onset, and lag time between the date of symptom onset and admission to
94 a medical clinic.

95

96 **2.1.2 Interventions**

97 Harvard University employed three main interventions: (i) an email awareness campaign, (ii) more
98 aggressive diagnoses, and (iii) strict isolation of infectious persons.

99 First, between February and May 2016, HUHS sent six different emails to Harvard students,
100 employees, and colleagues with information on the gravity of the outbreak, recommendations on
101 how to prevent transmission, and instructions on how to identify mumps. This raised awareness

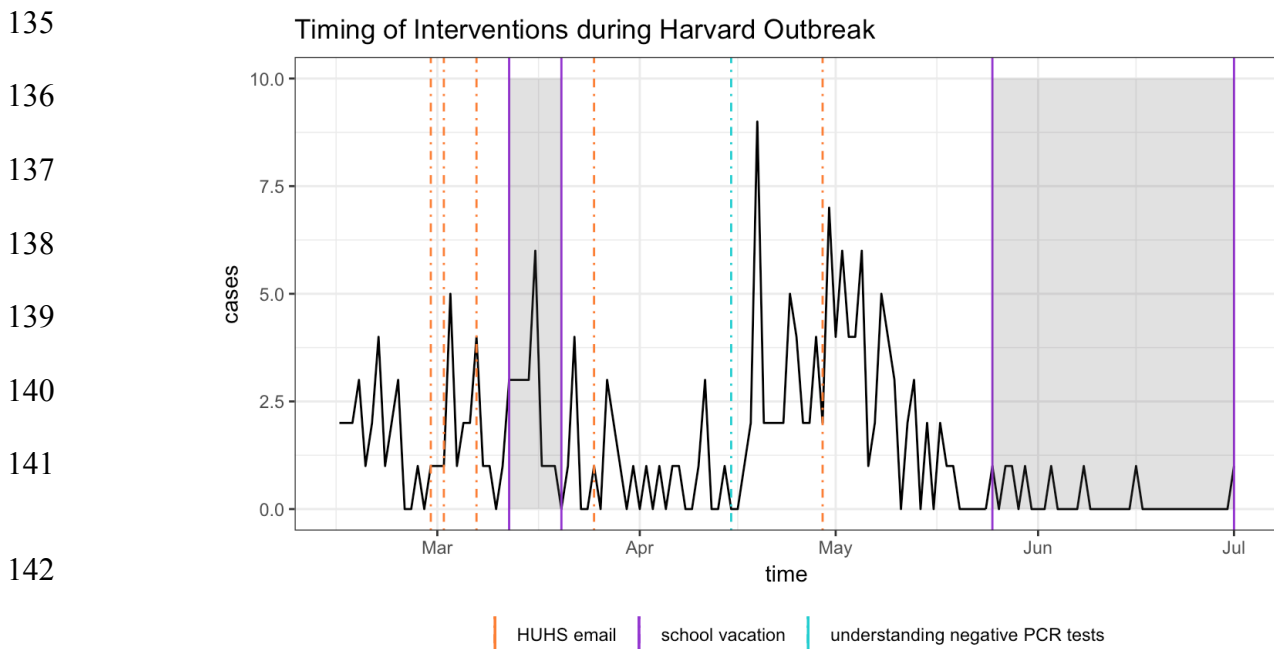
102 throughout the campus. Particularly at the peak of the outbreak, roommates, resident deans, and
103 athletic coaches all played essential roles in reporting potential cases of mumps, so that few cases
104 likely went undetected and untreated by HUHS (18, 19).

105 Second, Harvard acted vigorously to treat and isolate anyone suspected of mumps
106 throughout the outbreak. Initially, due to the disease's non-specific symptoms and less extreme
107 manifestation in vaccinated people, HUHS used positive mumps PCR tests as a necessary ground
108 for diagnosis. Later, on recommendation from the MDPH, HUHS stopped automatically ruling out
109 those with negative PCR results, given that false negatives were quite frequent in vaccinated
110 individuals and that some individuals reported their infection to the clinic belatedly. In outbreaks
111 among two-dose vaccine recipients, mumps virus was only detected in samples from
112 approximately 30-35% of case patients if the samples were collected within the first three days
113 following onset of parotitis (22). Anyone who entered HUHS displaying clinical symptoms of
114 mumps was now deemed infected and infectious. This change in the diagnosis protocol took place
115 on April 15 2014, day 61 of the outbreak (19).

116 Third and perhaps most notably, Harvard isolated most confirmed or probable cases of
117 mumps. While many universities simply suggest self-isolation in one's room or dormitory (which
118 leaves roommates and friends highly susceptible to the disease), Harvard removed anyone with
119 clinical symptoms of mumps from the population. Of the 230 total cases at Harvard between
120 February 2016 and November 2017, 96 were isolated in alternate housing on campus, while 110
121 were isolated off-site. Although a person remains infectious with mumps for five days, Harvard
122 isolated patients for six days for additional measure (18).

123 Harvard also used a variety of smaller techniques to contain the disease. For instance, water
124 fountains with a weak upward flow were repaired in late March when it became apparent that

125 students were directly touching the fountain with their water bottles or mouths (19). In this study,
126 we only considered the first three larger-scale interventions in our models. Figure 1 shows a
127 timeline of the interventions as well as periods when the population was fluctuating (such as during
128 spring and summer break). Around two weeks after HUHS improved its criteria for diagnosis in
129 mid-April, there was a steep decline in the number of new cases. These interventions were possible
130 thanks to the ample resources that Harvard has at its disposal, which may not be available at other
131 universities. Nevertheless, this situation makes Harvard an ideal testing ground for interventions
132 that could not be deployed elsewhere, at least without solid proof of their efficacy. Thus, we
133 quantify the effects of the three main interventions (awareness campaign, aggressive diagnoses,
134 and strict isolation of suspected cases) further in the modeling section of this paper.



144 **Figure 1:** The daily number of new mumps cases (probable or confirmed) at Harvard and the
145 timeline of school vacations and control interventions employed by HUHS between February
146 and June 2016. Both probable and confirmed cases display clinical symptoms of mumps, but
147 only confirmed cases have a positive PCR result. HUHS sent multiple emails over the course
of the outbreak, raising awareness about the spread of mumps. Additionally, in mid-April, HUHS
began more carefully diagnosing mumps, rather than automatically ruling out those with
negative PCR tests. The isolation policy is not shown because it occurred continuously
throughout the entire outbreak.

148 **2.2 Ohio State University mumps outbreak**

149 **2.2.1 Data on the outbreak**

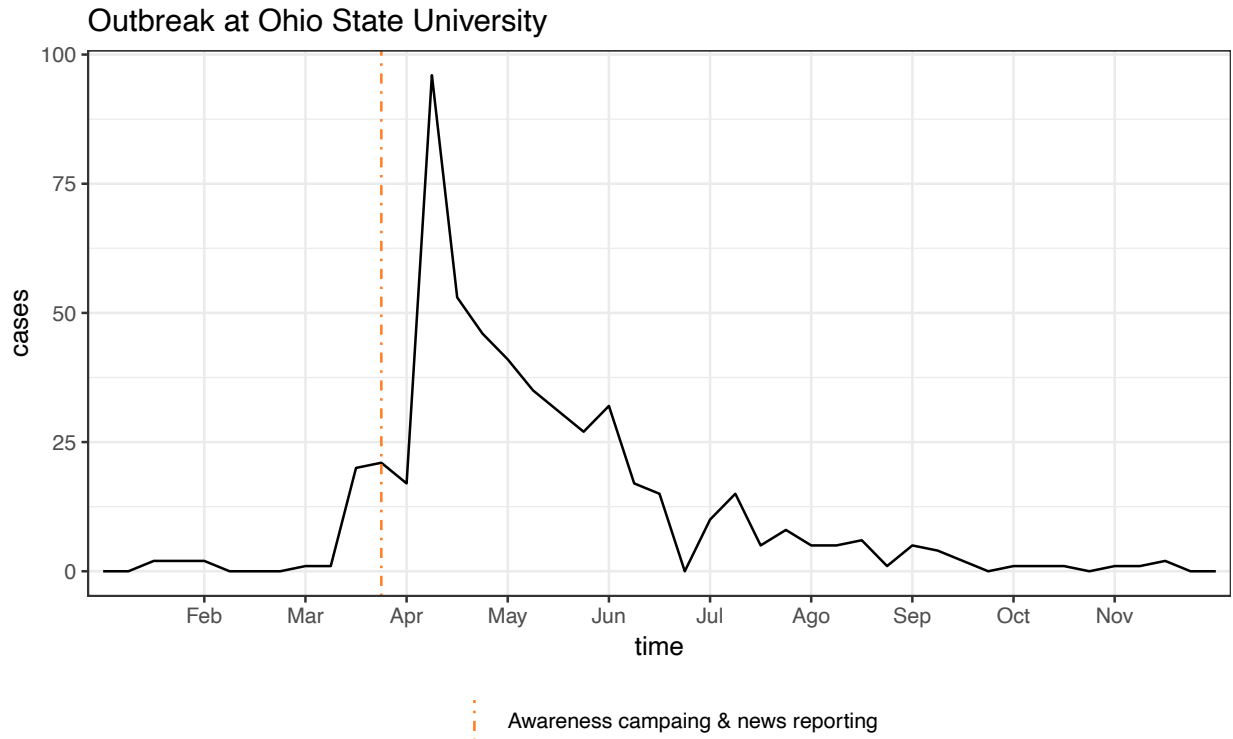
150 In 2014, a large outbreak of mumps occurred in central Ohio, with the majority of cases linked to
151 OSU in Columbus. The outbreak began in February 2014 and peaked in early April with 96 cases
152 in one week. By summer and early fall, the number of cases had dramatically dropped and
153 stabilized (13). We therefore restrict our analysis of the outbreak to the time between Week 1 and
154 Week 40 of 2014, in which there were a total of 528 cases (Figure 2). We obtained this data from
155 CDC's *Morbidity and Mortality Weekly Report* (23). One drawback of the data is that the cases
156 are reported weekly, making our analysis and parameter estimations less precise. Furthermore, we
157 cannot guarantee that all the cases in this dataset are linked to the university itself, but we know
158 from news reports that most cases in Ohio occurred on campus during the first half of 2014 (13).
159 The proximity in time to the Harvard outbreak and the differences in response detailed below make
160 this a good dataset to compare to.

161

162 **2.2.2 Characteristics of the response**

163 We were unable to acquire data directly from OSU, and thus the exact timeline and range of
164 interventions administered over this period are not known. We learned through online searches
165 that advisories were published by the university, notifying students of the issue and how to prevent
166 its spread. One notice published by OSU's medical center reads: "Stay at home for five days after
167 symptoms (salivary gland swelling) begins (required by Ohio law OAC 3701-3-13, (P)); avoid
168 school, work, social gatherings, and other public settings" (24). These advisories were distributed
169 since March 2014 (25), and local news outlets also started reporting the outbreak earlier in the

170 month (26). It appears, however, that like most affected universities, OSU did not formally isolate
171 infectious persons.



172

173 **Figure 2:** Number of weekly mumps cases in Ohio (particularlly Ohio State University) between
174 January and November 2014. There were 528 cases during this time period, with most occurring
175 between March and July. The dotted line in the last week of March indicates the intervention
consisting in awareness campaign by OSU, as well as local and national news reports about the
outbreak.

175

176 2.3 Epidemiological POMP model

177 The epidemiology of mumps can be captured by a Susceptible-Exposed-Infected-Removed (SEIR)
178 compartmental model: after exposure, individuals go through a latent non-infectious period,
179 followed by an infectious phase (27). Infectious individuals are removed from the transmission
180 process either by recovery or isolation, after which they become immune. Compartmental models
181 simplify the mathematical modeling of infectious diseases; however, they assume access to fully
182 observed disease data (see Suppl. materials). In reality, not all mumps cases are reported, and latent

183 mumps carriers exhibit no symptoms at all. In order to address this issue, our approach integrates
184 a standard SEIR model with a Partially Observed Markov Process (POMP) model (28). This allows
185 us to combine the simplicity of compartmental models with a probabilistic framework for the
186 underlying dynamics and the observed data. POMP models require the specification of a process
187 model that describes stochastic transitions between the (unobserved) states of the system (in this
188 case, the SEIR compartments), and a measurement model where the distribution of observed data
189 (e.g.: confirmed cases) is expressed as a function of the unobserved states. The stochasticity
190 introduced in the SEIR dynamics makes our model better suited to describe small populations,
191 such as college campuses, where random fluctuations can be significant in relation to the size of
192 the population. We describe the process and measurement models below.

193

194 **2.3.1 Process model**

195 The process model, defined as a stochastic SEIR model, provides the change in true incidence of
196 mumps at every time point. We add parameters that induce random fluctuations into the population
197 and change the compartments' rates of transfer in response to interventions. We do this by using
198 probabilistic densities for the transition of state variables. Moreover, although disease dynamics
199 are technically a continuous Markov process, this is computationally complex and inefficient to
200 model, and so we make discretized approximations by updating the state variables after a time step,
201 δ . Due to the varying granularity of the observed data (daily and weekly), we used two different
202 time steps: $\delta_H = 2.4 \text{ hours}$ for Harvard and $\delta_O = 12 \text{ hours}$ for OSU. The system of discretized
203 equations is shown in Equation 1, where $B(t)$ is the number of susceptible individuals who

204 become exposed to mumps, $C(t)$ is the number of newly infectious cases, and $D(t)$ is the number
205 of cases that are removed from the population:

$$\begin{aligned} 206 \quad & S(t + \delta) = S(t) - B(t) \\ 207 \quad & \\ 208 \quad & E(t + \delta) = E(t) + B(t) - C(t) \\ 209 \quad & \\ 210 \quad & I(t + \delta) = I(t) + C(t) - D(t) \quad (1) \\ 211 \quad & \\ 212 \quad & R(t + \delta) = R(t) + D(t) \\ 213 \quad & \\ 214 \quad & S(t) + E(t) + I(t) + R(t) = N \\ 215 \quad & \end{aligned}$$

216 Equation 1 describes how the sizes of the four compartments (susceptible, exposed,
217 infectious, and removed) change between $(t, t + \delta)$. The model further assumes that the
218 population size N remains constant at every time point. We added inherent randomness to our
219 model by setting $B(t)$, $C(t)$, and $D(t)$ as binomials. If we assume that the length of time an
220 individual spends in a compartment is exponentially distributed with some compartment-specific
221 rate $x(t)$, then the probability of remaining in that compartment for an additional day is
222 $\exp(-x(t))$ and the probability of leaving that compartment is $1 - \exp(-x(t))$:

$$\begin{aligned} 223 \quad & B(t) \sim \text{Bin}(S(t), 1 - \exp(-\lambda(t))), \text{ where } \lambda(t) = \beta(t) \frac{I(t)}{N} \\ 224 \quad & \\ 225 \quad & C(t) \sim \text{Bin}(E(t), 1 - \exp(-\sigma)) \quad (2) \\ 226 \quad & \\ 227 \quad & D(t) \sim \text{Bin}(I(t), 1 - \exp(-\gamma(t))) \end{aligned}$$

228 The force of infection, $\lambda(t)$, is the transition rate between the susceptible and exposed
229 classes at time t , and can be expressed as $\beta(t) \frac{I(t)}{N}$, where $\beta(t)$ represents the transmission rate of
230 the disease. The removal rate between the infectious and removed compartments at time t is given
231 by $\gamma(t)$, and transition rate between the exposed and infectious classes is σ . Therefore, $\gamma(t)^{-1}$
232 represents the mean length of time a person is infectious before being removed from the population
233 (either because of intervention efforts or natural recovery), while σ^{-1} represents the mean length

234 of time a person stays in the latent stage. With this notation, we are implicitly assuming that the
235 transmission and removal rates could change over time due to interventions or changes in behavior,
236 while the duration of the latent stage is constant and determined by the physiopathology of the
237 disease. We will justify these assumptions for Harvard and OSU next, as well as provide explicit
238 formulas for $\beta(t)$ and $\gamma(t)$.

239 Leaving aside the unlikely possibility of change in pathogen's infectivity, the transmission
240 rate $\beta(t)$ essentially depends on the frequency of exposure events. In the case of Harvard, its
241 nature as a residential campus would lead to significant decreases in student population, and
242 therefore exposures, during school vacations. Exposure at OSU, a non-residential campus, is
243 arguably less affected by vacation breaks. Another potential cause for reduction in exposures is
244 awareness campaigns resulting in the adoption of preventive behaviors by students. Both Harvard
245 and OSU adopted such campaigns, in the former, implemented as emails regularly sent out by
246 HUHS recommending personal hygiene and testing in case of symptoms compatible with mumps;
247 in the latter, in the form of advisories posted around campus and online, advising self-isolation to
248 those students who presented symptoms. Furthermore, due to the scale of the mumps outbreak in
249 Ohio, it received local and national news coverage, particularly in connection with OSU.
250 Anecdotal evidence (i.e.: conversation with students) and, most importantly, the fact that HUHS
251 emails were throughout the outbreak, make us conclude that emails were not particularly effective.
252 On the other hand, news coverage in the case of OSU could have led to additional awareness by
253 students and encouraged some to self-isolate. We argue that self-isolation results in lowering of
254 transmission rate, not shortening of the removal time, because it is not perfect quarantine and
255 people can still interact and become exposed, albeit at a lower frequency. Based on these known

256 facts and our interpretation of them, we propose the following transmission rate $\beta_H(t)$ for the
257 Harvard model:

$$\begin{aligned} 258 \quad \beta_H(t) &= p\beta_H, \quad t_0 \leq t \leq t_1 \text{ or } t \geq t_2 \\ 259 \quad &= \beta_H \text{ otherwise} \end{aligned} \quad (3)$$

260
261 Here, t_0 and t_1 represent the starting and ending dates for the spring break (March 12-20 2016),
262 and t_2 the beginning of the summer recess (May 26 2016). The constant β_H is the baseline
263 transmission rate during normal class term, and the parameter p is a number between 0 and 1 that
264 accounts for the reduction of student population on campus during the school vacation. In the case
265 of OSU, we propose:

$$\begin{aligned} 266 \quad \beta_o(t) &= w\beta_o, \quad t \geq \zeta \\ 267 \quad &= \beta_o \text{ otherwise} \end{aligned} \quad (4)$$

268
269 In this equation, β_o the baseline transmission rate, w is a constant lower than 1, and ζ the time
270 when students began to self- quarantine. Based on publication of public health advisories and
271 local news, we set this time as the last week of March 2014 (week 12). Since Harvard's
272 quarantine was in effect through the entirety of the outbreak, we did not incorporate a similar w
273 coefficient to the corresponding $\beta_H(t)$ equation for Harvard.

274 The removal rate $\gamma(t)$ can also be affected by interventions and personal behaviors. We
275 know that HUHS diagnosis protocol changed on day 61 of the outbreak at Harvard, resulting in a
276 shorter average removal time since clinical presentation of symptoms alone was enough to result
277 in strict isolation of suspected cases. Thus, we propose the following $\gamma_H(t)$ for Harvard:

$$\begin{aligned} 278 \quad \gamma_H(t) &= q\gamma_H, \quad t \geq \tau \\ 279 \quad &= \gamma_H, \quad t < \tau \end{aligned} \quad (5)$$

280 Here, q is a constant greater than 1 and τ is the date when the new criteria was implemented (April
281 15, 2014). The constant γ_H is the baseline removal rate reflecting the impact of the original
282 diagnosis protocol. In the OSU model, on the other hand, we assume a constant recovery rate γ

283 equal to the population average for mumps, since infected individuals self-isolate at home. This
284 would not result in a strict quarantine but in a reduced contact rate with susceptible individuals,
285 which is already modeled by a lower transmission rate in equation (4).

286 Finally, it is necessary to estimate the basic reproduction number, R_0 , which equals the
287 expected number of secondary cases produced by an infectious person in a completely susceptible
288 population (27). R_0 measures the initial growth rate of an outbreak and so, if it is less than 1, then
289 the infection will die out and there will be no epidemic. For our stochastic SEIR model, this
290 constant can be expressed as $R_0 = \frac{\beta}{\gamma}$ (29). Meanwhile, the time-dependent effective reproduction
291 number is defined as $R_E(t) = \frac{\beta(t)}{\gamma(t)} * \frac{S(t)}{N}$, but because $S(t) \approx N$, we can simplify this expression
292 to $R_E(t) \approx \frac{\beta(t)}{\gamma(t)}$. Both the basic and effective reproduction numbers allow us to understand the
293 strength of an outbreak.

294

295 **2.3.2 Measurement Model**

296 Although it is impossible to directly record the number of people that are susceptible, exposed,
297 infectious, and removed directly, the MDPH and CDC data tells us the number of observed cases
298 per day. The mean number of observed cases per day is the true number of cases multiplied by the
299 reporting rate ρ ($\rho < 1$). However, rather than simply denoting the observed number of cases as a
300 binomial distribution, we account for greater variability in the measurements than a binomial
301 distribution expects, since college populations are “small” (compared to cities and larger
302 administrative units) and more affected by random fluctuations (30). Thus, the number of observed
303 cases, y_t , given the number of true cases, $C(t)$, can be best modelled by an overdispersed binomial
304 distribution defined as a discretized Normal random variable:

305
$$y_t | C(t) \sim \text{Normal}(\rho C(t), \rho(1 - \rho)C(t) + (\psi \rho C(t))^2)$$

306
307

308 The parameter ψ handles the increased variability in a small population. If $\psi = 0$, the
309 variance in our measurement model simplifies to the variance for a binomial distribution.

310

311 **2.3.3 Final POMP Model**

312 The process and measurement models define our final POMP model. For each time point, the
313 process model generates the number of new cases based on binomially distributed counts. The
314 measurement model then estimates the observed number of cases based on the true number of
315 cases and reporting rate. The free parameters in our POMP models for Harvard and OSU that need
316 to be estimated from the data are the following: (i) β_H and β_O , baseline transmission rates, (ii) p
317 and w , decrease in transmission rate at Harvard and OSU due to vacation and self-isolation,
318 respectively, (iii) γ_H baseline removal rate at Harvard (iv) q , increase in removal rate due to the
319 updated HUHS diagnosis protocol, (v) ρ_H and ρ_O , case reporting rates, (vi) ψ_H and ψ_O ,
320 overdispersion coefficient representing additional variability in the populations.

321

322 **2.3 Fixed parameters**

323 In addition to the free parameters to be estimated from the observed case data, our models also
324 include a number of fixed parameters, shown in Table 1, whose values can be inferred directly
325 from previous knowledge or available information. As mentioned earlier, we chose $\tau = 61$ days
326 and $\zeta = 12$ weeks because those points in time at Harvard and OSU correspond to the introduction
327 of the interventions that we hypothesized to be impactful in the dynamics of the respective
328 outbreaks. Dates t_0 , t_1 , and t_2 for the spring and summer vacations at Harvard are available online

329 (31). We set the rate between the exposed and infectious classes and the recovery rate to $\sigma = \frac{1}{17}$
330 and $\gamma = \frac{1}{5}$, respectively, since the average latent period and recovery time for mumps are known
331 to be $\sigma^{-1} = 17$ days and $\gamma^{-1} = 5$ days (6). Finally, we set the effective population size at Harvard
332 $N_H = 20,000 \times 0.53 = 10,600$ people based on records of Harvard's enrollment and
333 employment, and Grad and Lewnard estimation of susceptibility to mumps among college-age
334 adults due to immunity waning (6). Similarly, we use an effective population for OSU given by
335 $N_O = 60,000 \times 0.53 = 31,800$, leveraging the total enrollment for the 2013-2014 academic year
336 reported in OSU's statistics website (32).
337

<i>Symbol</i>	<i>Description</i>	<i>Value</i>	<i>Units</i>	<i>Source</i>
τ	Date of intervention at Harvard	61	day	Harvard records on interventions (19)
t_0, t_1, t_2	Vacation dates at Harvard, 2015-2016 academic year	26, 34, 100	day	Harvard archived academic calendar (31)
ζ	Date of intervention at OSU	12	week	
σ^{-1}	Duration of mumps latent period	17	day	Lewnard and Grad (6)
γ^{-1}	Duration of mumps recovery period	5	day	Lewnard and Grad (6)
N_H	Effective population at Harvard	10,600	—	Harvard records on population size (20) and mumps susceptibility among college-aged individuals (6)
N_O	Effective population at OSU	31,800	—	OSU's statistical summary (32) and mumps susceptibility among college-aged individuals (6)

338 **Table 1:** List of fixed parameters used in mumps transmission model for Harvard and OSU

339

340 **2.4 Maximum likelihood estimation of free parameters**

341 In order to obtain estimates of the free parameters in our models, we pick the parameter values that
342 maximize the log likelihood of the observed data given each model. Within the POMP framework,
343 we can perform fast maximum likelihood estimation (MLE) via Sequential Monte Carlo (SMC)
344 techniques (28). SMC allows us to calculate the likelihood of the data more efficiently by applying

345 the Markov property to generate paths in parameter space that sample the likelihood surface. We
346 performed 100 searches from random parameter guesses, each converging to a unique value, and
347 we then took the maximum over the 100 runs the final point estimates. We did this using the pomp
348 package version 2.8 (33) for the R statistical software version 3.6.1 (34). In order to calculate the
349 confidence intervals for each parameter, we selected the top quartile from the set of parameters
350 values obtained in the SMC runs, and applied the adjusted bootstrap percentile (BCa) method (35)
351 with 10,000 bootstrap replicates using the function boot.ci in version 1.3.20 of package boot for R
352 (36).

353

354 **2.5 Intervention analysis**

355 Finally, we performed an analysis of the parameters q and w , which respectively quantify the effect
356 of what we consider to be the defining intervention at Harvard (aggressive diagnosis) occurring
357 around day 61 of the outbreak, and the self-isolation awareness campaign at OSU during March
358 2014. This could allow us to understand to what extent these interventions made a difference on
359 the trajectory of the outbreak. First, we compared the scenario with the interventions versus a
360 scenario without the interventions. Controlling for all other parameters, we run two sets of
361 simulations at the MLEs, with 200 simulations each. The first set of simulations fixed q and w at
362 the value obtained from MLE, while the second set of simulations set q and w to 1, assuming that
363 no interventions occurred around day 61 at Harvard and by week 12 at OSU. We then compared
364 the cumulative number of cases over time for these two sets of simulations, generating a 95%
365 percentile range from all the simulations in each set. Second, we used this method to determine if
366 administering the interventions earlier could have lowered the number of cases. For Harvard, we
367 let the day of the intervention take on values between 1 and 60. Subsequently, we ran simulations

368 for each of these 60 cases, pulled the final outbreak size from the median simulation, and calculated
369 the reduction in outbreak size. We applied the same procedure for OSU, in this case varying the
370 day of intervention between 1 and 11 and calculating the corresponding final outbreak sizes.

371 3. RESULTS

372 3.1 Optimal Parameters of Harvard and OSU Outbreaks

373 The MLEs of the parameters provide insight into the key characteristics of Harvard’s and OSU’s
 374 outbreak. In general, we observe very good agreement between the observed cases and the
 375 simulated outbreaks using the optimal parameters. The effective reproduction number also reflects
 376 the effects of the interventions at Harvard and OSU in way that’s consistent with our initial
 377 modeling assumptions. The bootstrap sampling method results in narrow 95% CIs.

378

379 3.1.1 Maximum Likelihood Estimates for Harvard

380 The results are shown in Table 2. Notably, the baseline removal rate γ_H is quite high, indicating
 381 that the initial diagnosis protocol was quite effective at identifying and removing infected students
 382 from the population, but it was further increased after day 61. The reporting rate ρ_H is also
 383 remarkably high, which suggests that HUHS was able to identify most of the cases circulating at
 384 Harvard.

<i>Symbol</i>	<i>Description</i>	<i>Point estimate</i>	<i>95% CI</i>	<i>Units</i>	<i>Source</i>
β_H	Baseline transmission rate	1.39	(1.29, 1.42)	day ⁻¹	MLE
γ_H	Baseline removal rate	0.85	(0.81, 0.88)	day ⁻¹	MLE
p	Decrease in infection due to vacation	0.11	(0.09, 0.15)		MLE
q	Increase in removal rate	2.8	(2.25, 2.52)	—	MLE
ρ_H	Proportion of infections reported	0.97	(0.92, 0.95)	—	MLE
ψ_H	Overdispersion parameter	0.54	(0.49, 0.53)	—	MLE
$R_E(t)$	Effective reproduction number	1.63 normal term 0.18 during vacation 0.58 after intervention	—	—	Calculated as $\frac{\beta(t)}{\gamma(t)}$

385

Table 2: List of parameters in the Harvard model that were obtained by MLE or calculated using the estimated parameters.

386

387 We ran stochastic simulations of Harvard’s outbreak using the parameter values from Table
388 2. Figure 3 shows consistent results across simulations: shortly after day 61 (the time of the primary
389 intervention), we consistently see a decrease in the number of observed cases. The variability in
390 the simulations can partly be attributed to the randomness in the stochastic model as well as the
391 over-dispersion parameter. Variability can also be explained by the MLE of the basic reproduction
392 number being below 2, which together with the stochasticity built into the simulations, can result
393 in absence of outbreak, such as in simulation 8, or much smaller outbreaks like in 5, 7, and 9.

394

395 3.1.2 Maximum Likelihood Estimates for OSU

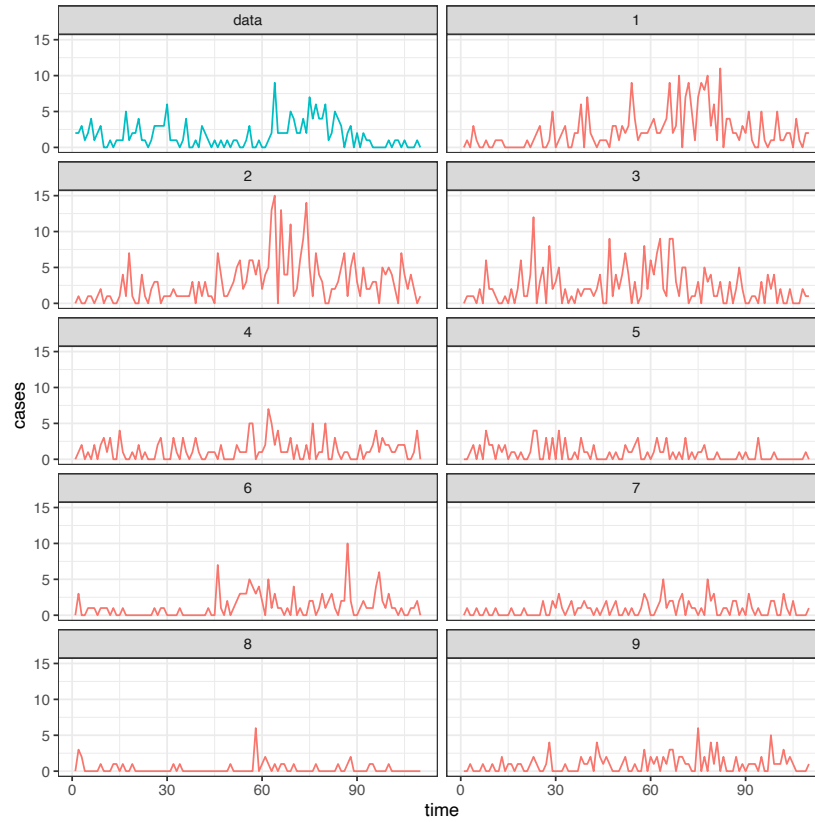
396 The MLEs of the parameters for the OSU model, as well as derived quantities, are shown in Table
397 3. Here we can see an initial reproductive number of almost 6, much higher than Harvard’s.
398 However, it eventually becomes lower than 1, which supports our modeling assumptions of an
399 awareness campaign from OSU, perhaps helped by news reporting about the outbreak, that lead to
400 effective self-isolation of individuals.

<i>Symbol</i>	<i>Description</i>	<i>Point estimate</i>	<i>95% CI</i>	<i>Units</i>	<i>Source</i>
β_O	Transmission rate constant	1.19	(1.19, 1.2)	day ⁻¹	MLE
w	Decrease in infection due to self-isolation	0.16	(0.157, 1.16)	—	MLE
ρ_O	Proportion of infections reported	0.03	(0.029, 0.03)	—	MLE
ψ_O	Overdispersion parameter	0.38	(0.376, 0.38)	—	MLE
$R_E(t)$	Effective reproduction number	5.95 initial 0.95 after advisory		—	Calculated as $\frac{\beta(t)}{\gamma(t)}$

401 **Table 3:** List of parameters in the OSU model that obtained by MLE or calculated using
402 the estimated parameters.

403 As with Harvard, we run stochastic simulations of OSU’s outbreak using the parameter values
404 from Table 3. The simulated outbreaks are shown in Figure 4, and they replicate the real curve
405 with some random variation due to the stochastic nature of the model.

It is made available under a [CC-BY-NC-ND 4.0 International license](https://creativecommons.org/licenses/by-nc-nd/4.0/).

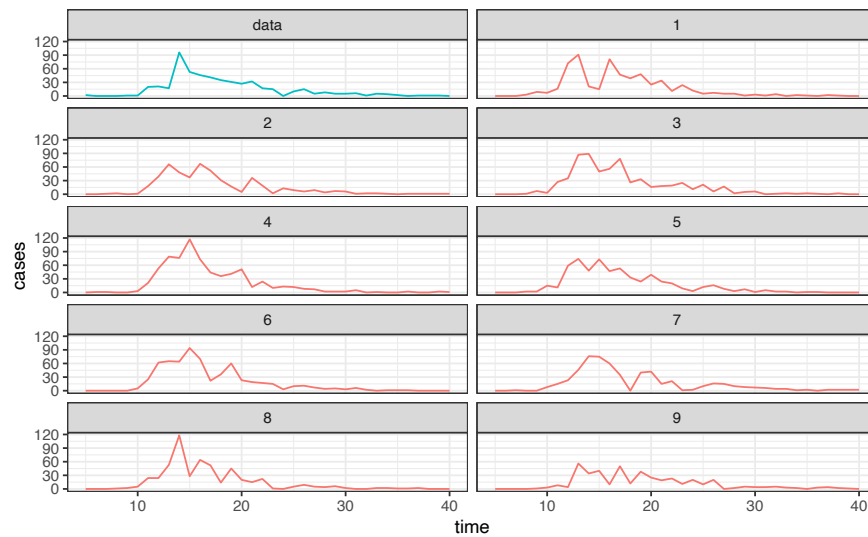


406

407

Figure 3: Nine simulations of the final Harvard model evaluated at the maximum likelihood estimates. Comparisons to the actual data show that many of the simulations (particularly Simulation 1, 2, 3, and 6) have similar patterns that mirror the shape curve for the observed data.

408



409

Figure 8: Nine simulations of the final OSU model evaluated at the maximum likelihood estimates. All of them follow the observed data quite closely.

410

411 **3.2 Earlier intervention decreases outbreak size at Harvard and OSU**

412 The results from the intervention analysis for Harvard and OSU is depicted in Figure 5. By the
413 final day of the Harvard outbreak (day 130), the simulations without the intervention on day 61
414 yielded outbreak sizes that were up to four times the size of the actual outbreak (Figure 5A). These
415 results also indicate that the outbreak would have lasted much longer, if not for these vigilance-
416 increasing strategies. By varying the day of the intervention from 1 to 61, we also obtained a linear
417 regression between day of intervention and reduction of the outbreak (Figure 5C). The fitness of
418 the regression is very high ($R^2=0.96$, $P<10^{-9}$), and quick inspection of the plot reveals that if the
419 new diagnosis protocol had been implemented within the first 10 days of the outbreak, then no
420 more than 50 students would have been infected in total at Harvard.

421 For OSU we observe similar trends. Lack of intervention on week 12 could have resulted
422 in an outbreak twice as large (Figure 5B). The outbreak size as a function of the intervention week
423 also shows a strong dependency, but in this case non-linear and best fit with a sigmoid function of
424 the form $1/(1+e^{\text{week}-12})$. Using this transformation, the fit is also very high ($R^2=0.63$, $P<0.005$), and
425 we can conclude that intervening earlier would have had a major effect as well: if the awareness
426 campaigns prompting students to self-isolate had started around week 5 or 6 (rather than week 12),
427 then it appears likely that the outbreak would have been eradicated.

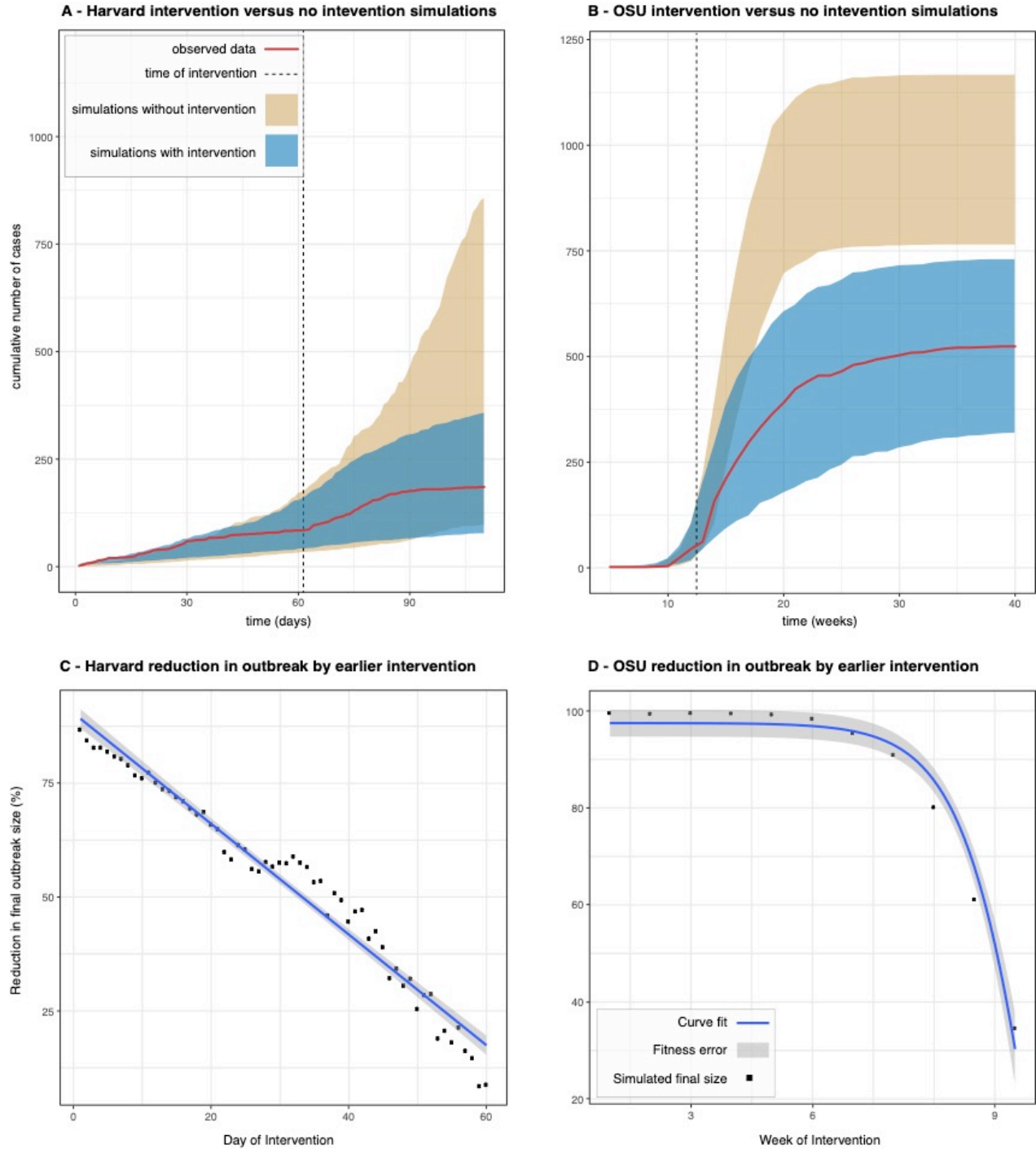
428

429

430

431

432



433

434

435

436

Figure 5: Panels A and B show the comparison of the cumulative number of cases over time for the observed Harvard and OSU data and the range of cases (95% percentile of the runs) in simulations with and without interventions, with dotted lines representing the timing of the interventions in each school (panels A and B). In panels C and D, the plots show the percentage we expect outbreak size to decrease by if the date of intervention had been moved up. There is a significant linear relationship between the time and percentage reduction in the case of Harvard, as well as a significant relationship after doing a sigmoid transformation of the time variable in the case of OSU.

437 **4. DISCUSSION**

438 **4.1 Parameter interpretation**

439 The MLEs give us insight into characteristics of the mumps outbreaks at Harvard University in
440 2016 and Ohio State University in 2014, as measured by their effective reproduction numbers R_E ,
441 intervention parameters q and w , rates of removal γ , reporting rates ρ , and overdispersion
442 parameters ψ . At Harvard, R_E during normal class term was 1.63, which indicates that the
443 outbreak was growing, even though testing and isolation by HUHS resulted in a baseline removal
444 time of only $\frac{1}{0.85} = 1.2$ days. This points to the effectiveness of the quarantine system
445 implemented by HUHS. However, a small fraction of false negative cases still managed to escape
446 quarantine and keep the virus under circulation, as indicated by the reproduction number being
447 higher than 1. The reproduction number goes below 1 during the spring break, which is reasonable
448 given that most students are away given the residential nature of the Harvard campus. However,
449 transmission resumes after the break. It is only after the implementation of the new diagnosis
450 protocol on day 61, which required isolation if clinical symptoms were present, that had a dramatic
451 effect on the detection and isolation of positive cases, effectively taking the removal time to less
452 than 1 day and the reproductive number below 0.6. Thanks to this key intervention, it was possible
453 to end the outbreak before the beginning of the summer recess.

454 The estimate of ρ is 0.96, which implies the reporting rate at Harvard was remarkable.
455 Reasons include the email awareness campaign, a community network – from resident deans to
456 athletic coaches – reporting students and employees who seemed at-risk, and more aggressive
457 diagnoses, particularly towards the end of the outbreak. The estimate for ψ is 0.54, suggesting that
458 the actual data has more variability than expected under the assumed distribution. If ψ had been

459 approximately 0, the variance in our measurement model would have simplified to the variance
460 for a binomial distribution. However, because the 95% confidence interval is (0.5, 0.56) and thus
461 does not include 0, we justify the modelling decision of representing the number of cases as an
462 over-dispersed binomial. Demographic and environmental stochasticity (e.g.: a student in the
463 midst of midterm season may be less likely to report symptoms), as well as the interventions
464 themselves (e.g.: reporting may increase temporarily after an awareness email) can result in over-
465 dispersion in the number of reported cases.

466 In the case of OSU, we obtain a much higher reproduction number at the beginning of the
467 outbreak, near 6, and a very low reporting rate of 3%. Before discussing these results any further,
468 it is important to keep in mind that we extrapolated OSU cases from state-level reports by the CDC.
469 Furthermore, we did not have direct access to information about the containment interventions
470 adopted by the school, as we did for Harvard, so we were only able to make educated guesses
471 about those possible interventions based on information we found on the web. However, the
472 internal consistency of the resulting model and the good agreement with the available data, gives
473 some weight to these results. Within our OSU model, we see that the assumed self-isolation of
474 students motivated by the advisories posted by OSU had the intended effect of stopping the
475 outbreak. The effective reproduction number dips below 1 after March, which is when the
476 awareness campaign appeared to have started, and also when the outbreak gained local and
477 national prominence due to news reporting. The low reporting rate is closer to population-wide
478 estimates of this parameter (6), and is also compatible with a large, non-residential campus where
479 it is harder to reach out to students as they live scattered around the city. A consequence of this
480 number is that the outbreak should have been 30 times larger than observed. Since the observed
481 case count is approximately 500, it follows that the total number of cases could have reached

482 15,000 individuals, which is still possible given that the number of susceptible within the school's
483 student population is over 30,000. This is still a very significant number, and it is possible that a
484 large majority of these potential 15,000 cases only had mild symptoms. Furthermore, the modeling
485 approximation of closed SEIR compartments is probably less accurate for OSU given its non-
486 residential nature: students there have more opportunity to interact with individuals outside of their
487 school, resulting in additional transmissions that are not captured by our model, and thus affecting
488 the interpretation of parameters such as the reporting rate.

489

490 **4.2 Effect of strict isolation policy vs self-isolation**

491 Arguably the most critical intervention by HUHS was the isolation requirement for confirmed and
492 probable mumps cases. By comparing the Harvard and OSU outbreaks, we conclude that the
493 isolation policy led to a smaller average infectious period for Harvard patients. The MLEs for
494 Harvard and OSU are different for several parameters, most notably basic reproduction number,
495 reporting rate, and rate of transition from the infectious to removed class. Firstly, OSU's basic
496 reproduction number is over four times that of Harvard. Harvard's isolation policy best explains
497 this difference because it physically prevented infectious persons from causing multiple secondary
498 infections, thus suppressing the growth of the outbreak. Secondly, OSU's reporting rate is
499 extremely low, at approximately 3% compared to Harvard's 96%. We do not have access to OSU's
500 diagnostic procedures nor do we know the extent of their email awareness campaign, but we
501 hypothesize that a lack of one or both of these may explain at least a portion of the dissimilarity in
502 the two schools' reporting rates. However, the reduction in OSU's transmission rate we observe
503 in our model post-intervention is still very significant at 94%, and would have been a major
504 contributor to help containing the outbreak there. This suggests that compliance with easy-to-

505 implement measures such as self-isolation could go a long way towards outbreak mitigation. Of
506 course, high compliance is contingent on good educational and awareness campaigns by the health
507 authorities.

508

509 **4.3 Implications of intervention analysis**

510 With the benefit of our intervention analysis, we conclude that aggressive diagnoses decreased the
511 size of the Harvard outbreak by approximately three-fourths. Furthermore, for every day of
512 intervention delay, we estimate that the outbreak size would have increased by 1.6 percentage
513 points, extrapolating the regression line in Figure 5C. Likewise, self-isolation prompted by health
514 advisories posted by the university reduced the size of the OSU outbreak by half. Given the non-
515 linear dependency between change in outbreak size and timing of intervention (Figure 5D), the
516 increase would have been even larger in that outbreak. Interestingly, this dependency also implies
517 that self-isolation in the first weeks of the outbreak can be enough to completely stop spread.

518 Clearly, a limitation of this analysis is the assumption that everything remains the same
519 while changing the time of the intervention under consideration. In reality, other factors might
520 come into play if the outbreak becomes larger or smaller, which in turn could affect the dynamics
521 of the outbreak as well as the interventions themselves. However, this analysis still provides a
522 useful hypothetical quantification of the effect of accelerating or delaying interventions designed
523 to contain the spread of an outbreak and here, as expected, the sooner the interventions are
524 introduced, the better the outcomes in terms of outbreak size. Of course, existing constraints in the
525 school's health system could impede fast interventions. In such situations, our method can be

526 useful to perform a cost-benefit analysis of how late an intervention could be made to still have a
527 significant reduction in the health burden caused by the disease.

528

529 **4.4 Conclusions**

530 We constructed and parametrized a POMP model for the transmission of mumps on college
531 campuses. Unlike other models of infectious disease, which opt for deterministic representations,
532 our stochastic model is adaptable to small populations and accounts for the noisiness and
533 incompleteness of case data. Moreover, it incorporates parameters that measures the effect of
534 interventions implemented after a given point in time. Given the worldwide crisis caused by the
535 COVID-19 pandemic, such models can be useful to quickly evaluate interventions designed to
536 contain the spread of SARS-CoV-2 once schools reopen in the U.S. and around the world.

537 We compared an outbreak at Harvard University, with its various intervention strategies,
538 to another university outbreak of comparable reported cases at OSU. Importantly, while most
539 literature today focuses on mumps prevention – such as administering third MMR doses to college-
540 age students – this paper provides quantitative backing for more immediate and less costly
541 approaches to mitigating the spread of mumps and other infectious diseases, most notably COVID-
542 19, for which there is no vaccine yet available. In particular, requiring strict isolation if any
543 symptoms of the disease are presented would significantly reduce transmission and ultimately the
544 size of the outbreak. Effective awareness campaigns that lead to self-isolation of infected
545 individuals with mild symptoms can also have a significant effect in containing the spread of
546 disease and limiting the risk for vulnerable populations.

547

548 **4.4 Limitations**

549 Some of our conclusions are likely affected by confounding factors that we cannot control for in
550 this analysis. For example, the outbreak at Harvard started to subside in late April, not long before
551 students finish the semester and leave campus, which would decrease the number of potential
552 infections. The most promising method to determine the exact effect of isolation strategies is
553 through a randomized control trial. Regarding the differences between OSU and Harvard
554 parameters, we must be cautious in taking the OSU estimates at face value. Given that the OSU
555 data consists of weekly reports rather than daily reports of cases, we should expect the estimates
556 for the parameters to be less accurate. Furthermore, the cases are not solely linked to the university.
557 Numerous cases in the data occurred in the greater Columbus area, suggesting that the parameter
558 estimates do not only account for the dynamics of mumps on campus. Lastly, major differences in
559 housing and campus characteristics could have also contributed to differences between the two
560 schools; for instance, OSU's population size is three times that of Harvard, and OSU has larger
561 dorms than Harvard's houses. Interventions used at Harvard simply may not have worked as well
562 at OSU. We were fortunate to have direct access to school administrators who were involved in
563 the response to the 2016 outbreak to discuss HUHS interventions in detail, but we were not able
564 to get the same level of detail for OSU's interventions, as discussed in the main text. More broadly,
565 lack of publicly available datasets, with the exception of CDC reports on OSU's outbreak, is a
566 serious impediment to perform these analyses. Therefore, it will be essential that universities
567 across the US and globe actively share data for comparative analysis, to identify the best
568 intervention strategies to protect college campuses from outbreaks, especially in the post-COVID-
569 19 world.

570

571 **Competing Interests:** We declare no competing interests.

572 **Source Code:** Available at <https://github.com/broadinstitute/mumps-pomp-models>

573 **Author's Contributions:** MS participated in the design of the study, carried out the data analysis,
574 developed the epidemiological models, generated the conclusions, and drafted the manuscript; GF
575 developed the epidemiological models, and generated the conclusions; AC conceived of the study,
576 participated in the design of the study, coordinated the study, and helped draft the manuscript; SF
577 and PJB provided data on the HUHS interventions and reviewed the final draft of the manuscript;
578 PCS overviewed the study and reviewed the final draft of the manuscript. All authors gave final
579 approval for publication.

580 **Acknowledgements:** The authors would like to thank Jonathan Grad and Joseph Lewnard for
581 providing feedback on the study design, Hayden Metsky for reviewing the manuscript, members
582 of MDPH for providing access to the Harvard data, and Bridget Chak and Shirlee Wohl for guiding
583 in the interpretation of the data.

584 **Ethics:** Usage of Harvard University data for development of the SEIR model was approved by
585 the Massachusetts Department of Public Health (MDPH) through protocol 906066. Harvard
586 University Faculty of Arts and Sciences and the Broad Institute ceded review of secondary analysis
587 to the MDPH IRB through institutional authorization agreements. The MDPH IRB waived
588 informed consent given this research met the requirements pursuant to 45 CFR 46.116 (d). Data
589 from Ohio State University was obtained from the CDC's Morbidity and Mortality Weekly Report
590 2014. The Broad Institute has determined usage of this data constitutes non-human subjects
591 research.

592 **Funding:** Howard Hughes Medical Institute, US National Institutes of Health.

REFERENCES

- 593 1. Impact of the COVID-19 pandemic on education Wikipedia, the free encyclopedia2020
594 [updated 30 May 2020. Available from: [https://en.wikipedia.org/wiki/Impact_of_the_COVID-](https://en.wikipedia.org/wiki/Impact_of_the_COVID-19_pandemic_on_education)
595 [19_pandemic_on_education](https://en.wikipedia.org/wiki/Impact_of_the_COVID-19_pandemic_on_education).
- 596 2. Panovska-Griffiths J, Kerr CC, Stuart RM, Mistry D, Klein DJ, Viner RM, et al.
597 Determining the optimal strategy for reopening schools, the impact of test and trace interventions,
598 and the risk of occurrence of a second COVID-19 epidemic wave in the UK: a modelling study.
599 *Lancet Child Adolesc Health*. 2020;4(11):817-27.
- 600 3. Lordan R, FitzGerald GA, Grosser T. Reopening schools during COVID-19. *Science* (New
601 York, NY). 2020;369(6508):1146.
- 602 4. Costill D. College campus outbreaks require timely public health response. *Healio*
603 [Available from: <https://goo.gl/aW7GaT>.
- 604 5. Hurtado C. The Rise of Mumps in the United States Outbreak Observatory [Available from:
605 [https://www.outbreakobservatory.org/outbreakthursday-1/12/7/2017/the-rise-of-mumps-in-the-](https://www.outbreakobservatory.org/outbreakthursday-1/12/7/2017/the-rise-of-mumps-in-the-united-states)
606 [united-states](https://www.outbreakobservatory.org/outbreakthursday-1/12/7/2017/the-rise-of-mumps-in-the-united-states).
- 607 6. Lewnard JA, Grad YH. Vaccine waning and mumps re-emergence in the United States.
608 *Science Translational Medicine*. 2018;10(433).
- 609 7. Polack FP, Thomas SJ, Kitchin N, Absalon J, Gurtman A, Lockhart S, et al. Safety and
610 Efficacy of the BNT162b2 mRNA Covid-19 Vaccine. *N Engl J Med*. 2020.
- 611 8. The COVID vaccine challenges that lie ahead. *Nature*. 2020;587(7835):522.
- 612 9. Nishiura H, Kobayashi T, Miyama T, Suzuki A, Jung S-m, Hayashi K, et al. Estimation of
613 the asymptomatic ratio of novel coronavirus infections (COVID-19). *International Journal of*
614 *Infectious Diseases*. 2020;94:154-5.
- 615 10. Davies N, Barnard RC, Jarvis CI, Kucharski AJ, Munday JD, Pearson CAB, et al.
616 Estimated transmissibility and severity of novel SARS-CoV-2 Variant of Concern 202012/01 in
617 England. *CMMID Repository*. 2020.
- 618 11. Shah M, Quinlisk P, Weigel A, Riley J, James L, Patterson J, et al. Mumps Outbreak in a
619 Highly Vaccinated University-Affiliated Setting Before and After a Measles-Mumps-Rubella
620 Vaccination Campaign—Iowa, July 2015–May 2016. *Clinical Infectious Diseases*. 2018;66(1):81-
621 8.
- 622 12. Golwalkar M, Pope B, Stauffer J, Snively A, Clemmons N. Mumps Outbreaks at Four
623 Universities - Indiana, 2016. *MMWR Morb Mortal Wkly Rep*. 2018;67(29):793-7.
- 624 13. Bixler J, Botelho G. Over 360 cases of mumps in central Ohio, most of them tied to OSU.
625 *CNN* [Available from: <https://www.cnn.com/2014/05/16/health/ohio-mumps/index.html>.
- 626 14. Mumps Cases and Outbreaks Centers for Disease Control and Prevention [Available from:
627 <https://www.cdc.gov/mumps/outbreaks.html>.
- 628 15. Wohl S, Metsky HC, Schaffner SF, Piantadosi A, Burns M, Lewnard JA, et al. Combining
629 genomics and epidemiology to track mumps virus transmission in the United States. *PLOS*
630 *Biology*. 2020;18(2):e3000611.
- 631 16. Isolation Expenses (2016-2017). *Harvard University Health Services*; 2017.
- 632 17. Stocks T, Britton T, Höhle M. Model selection and parameter estimation for dynamic
633 epidemic models via iterated filtering: application to rotavirus in Germany. *Biostatistics*. 2018.
- 634 18. Barreira P, Fitzgerald S. Personal communication. 2018.

- 635 19. Correspondence regarding Mumps 2016, Spring to Summer. Harvard University Health
636 Services.
- 637 20. Mumps List for CDC. Harvard University Health Services.
- 638 21. Massachusetts Mumps Case Data between 2015 and 2017. Massachusetts Department of
639 Public Health.
- 640 22. Bitsko RH, Cortese MM, Dayan GH, Rota PA, Lowe L, Iversen SC, et al. Detection of
641 RNA of mumps virus during an outbreak in a population with a high level of measles, mumps, and
642 rubella vaccine coverage. *J Clin Microbiol.* 2008;46(3):1101-3.
- 643 23. Morbidity and Mortality Weekly Report. 2014.
- 644 24. Mumps Outbreak FAQs: The Ohio State University; [Available from:
645 <https://www.osu.edu/assets/mumps/faqs.pdf>.
- 646 25. The Ohio State University Mumps Outbreak FAQs Columbus Public Health; 2014
647 [Available from: http://www.ccchd.com/documents/contentdocuments/doc_23_5_516.pdf.
- 648 26. Zeltner B. Mumps outbreak at Ohio State: Five things you need to know
649 cleveland.com2014 [updated January 12 2019. Available from:
650 https://www.cleveland.com/healthfit/2014/03/mumps_outbreak_at_ohio_state_f.html.
- 651 27. Martcheva M. *An Introduction to Mathematical Epidemiology*: Springer; 2015.
- 652 28. King AA, Nguyen D, Ionides EL. Statistical Inference for Partially Observed Markov
653 Processes via the R Package pomp. *Journal of Statistical Software.* 2016;69(12):43.
- 654 29. Brauer F, Van den Driessche P, Wu J. *Mathematical epidemiology*: Springer; 2008.
- 655 30. He D, Ionides EL, King AA. Plug-and-play inference for disease dynamics: measles in
656 large and small populations as a case study. *Journal of The Royal Society Interface.*
657 2010;7(43):271-83.
- 658 31. Academic Calendar: 2015-16: Harvard Law School; 2015 [Available from:
659 <https://hls.harvard.edu/dept/academics/academic-calendar/academic-calendar-2015-16/>.
- 660 32. The Ohio State University - Statistical Summary: The Ohio State University; 2013
661 [Available from: <https://www.osu.edu/osutoday/stuinfo13.php>.
- 662 33. King AA, Ionides EL, Bretó MC, Ellner SP, Ferrari MJ, Kendall BE, et al. pomp: Statistical
663 Inference for Partially Observed Markov Processes. 2020.
- 664 34. R Core Team. *R: A Language and Environment for Statistical Computing.* 2019.
- 665 35. Davison AC, Hinkley DV. *Bootstrap Methods and Their Applications*: Cambridge
666 University Press; 1997.
- 667 36. Canty A, Ripley BD. boot: Bootstrap R (S-Plus) Functions. 2017.