

Changes in the behavioural determinants of health during the coronavirus (COVID-19) pandemic: gender, socioeconomic and ethnic inequalities in 5 British cohort studies

David Bann^{1*}, Aase Villadsen¹, Jane Maddock², Alun Hughes², George Ploubidis,¹ Richard Silverwood^{1#}, Praveetha Patalay^{1,2#}

¹Centre for Longitudinal Studies, Department of Social Science, University College London, London, UK.

²MRC Unit for Lifelong Health and Ageing, UCL Institute of Cardiovascular Science, University College London, London, UK.

#Contributed equally

*corresponding author. david.bann@ucl.ac.uk

NOTE: This preprint reports new research that has not been certified by peer review and should not be used to guide clinical practice.

Background: The coronavirus (COVID-19) pandemic and consequent physical distancing measures are expected to have far-reaching consequences on population health, particularly in already disadvantaged groups. These consequences include changes in health impacting behaviours (such as exercise, sleep, diet and alcohol use) which are arguably important drivers of health inequalities. We sought to add to the rapidly developing empirical evidence base investigating the impacts of the pandemic on such behavioural outcomes.

Methods: Using data from five nationally representative British cohort studies (born 2001, 1990, 1970, 1958, and 1946), we investigated sleep, physical activity (exercise), diet, and alcohol intake (N=14,297). Using measures of each behaviour reported before and during lockdown, we investigated change in each behaviour, and whether such changes differed by age/cohort, gender, ethnicity, and socioeconomic position (SEP; childhood social class, education attainment, and adult reporting of financial difficulties). Binary or ordered logistic regression models were used, adjusting for prior measures of each health behaviour and accounting for study design and non-response weights. Meta-analyses were used to pool cohort-specific estimates and formally test for heterogeneity across cohorts.

Results: Changes in these outcomes occurred in in both directions ie, shifts from the middle part of the distribution to both declines and increases in sleep, exercise, and alcohol use. For all outcomes, older cohorts were less likely to report changes in behaviours compared with younger cohorts. In the youngest cohort (born 2001), the following shifts were more evident: increases in exercise, fruit and vegetable intake, sleep, and less frequent alcohol consumption. After adjustment for prior behaviour levels, during lockdown females were less likely to sleep within the typical range (6-9 hours) yet exercised more frequently; lower SEP was associated with lower odds of sleeping within the typical range (6-9 hours), lower exercise participation, and lower consumption of fruit and vegetables; and ethnic minorities were less likely than White participants to sleep within the typical range (6-9 hours), exercise less frequently, yet reported less frequent alcohol consumption.

Conclusions: Our findings highlight the multiple changes to behavioural outcomes that may have occurred due to COVID-19 lockdown, and the differential impacts across generation, gender, SEP and ethnicity. Such changes require further monitoring given their possible implications to population health and the widening of health inequalities.

Introduction

The coronavirus (COVID-19) pandemic is expected to have far-reaching consequences on population health, particularly in already disadvantaged groups.^{1,2} Aside from direct effects of COVID-19 infection, detrimental changes may include effects on physical and mental health due to associated changes to health-impacting behaviours. Change in such behaviours may be anticipated due to the effects social distancing, both mandatory and voluntary, and change in risk factors which may affect such behaviours—such as employment, financial circumstances, and mental distress.³ ⁴ The behaviours include physical activity, diet, alcohol, and sleep⁵—likely key contributors to existing health inequalities⁶ and indirectly implicated in inequalities arising due to COVID-19 given their link with risk factors such as obesity and diabetes.⁷

While empirical evidence of the impact of COVID-19 on such behaviours is emerging,⁸⁻²⁶ it is currently challenging to interpret for multiple reasons. First, generalising from one study location and/or period of data collection to another is challenging due to the vastly different societal responses to COVID-19 which could plausibly impact on such behaviours, such as restrictions to movement, access to restaurants/pubs, and access to support services to reduce substance use. This is compounded by many studies investigating only one health behaviour in isolation. Further, assessment of change in any given outcome is notoriously methodologically challenging.²⁷ Some studies have questionnaire instruments which appear to focus only on the negative consequences of COVID-19,⁸ thus curtailing an assessment of both the positive and negative possible effects on health behaviours.

The consequences of COVID-19 lockdown on behavioural outcomes may differ by factors such as age, gender, socioeconomic position (SEP), and ethnicity—thus potentially widening already existing health inequalities. For instance, younger generations (e.g. age 18-30 years) are particularly affected by cessation or disruption of education, loss of employment and income;³ and were already more likely than older persons to be in secure housing, secure employment, or stable partnerships.²⁸ In contrast, older generations are more appear more susceptible to severe consequences of COVID-19 infection, and have in many countries were recommended to ‘shield’ to prevent such infection. Within each generation, the pandemic’s effects are may have had inequitable effects by gender (e.g. childcare responsibilities being borne more by women), SEP and ethnicity (e.g. more likely to be in at-risk and low paid unemployment, insecure and crowded housing).

Using data from five nationally representative British cohort studies, which each used an identical COVID-19 follow-up questionnaire in May 2020, we investigated change in multiple health-impacting behaviours. Multiple outcomes were used since each is likely to have independent impacts on population health, and evidence-based policy decisions are likely better informed by simultaneous consideration of multiple outcomes.²⁹ We considered multiple well-established health equity stratifiers:³⁰ age/cohort, gender, socioeconomic position (SEP) and ethnicity. Further, since childhood SEP may impact on adult behaviours and health outcomes independently of adult SEP,³¹ we utilised prospective data in these cohorts to investigate childhood and adult SEP.

Methods

Study samples

We used data from four British birth cohort (c) studies, born in 1946,³² 1958,³³ 1970,³⁴ and 2000-2002 (2001c),³⁵ and one English longitudinal cohort study (born 1989-90; 1990c) followed up from 13 years.³⁶ Each has been followed up at regular intervals from birth or adolescence; data have been collected from home interviews on health, behavioural, and socioeconomic factors. In each study, participants gave written consent to be interviewed. Research ethics approval was obtained from relevant committees. In May 2020, during the COVID-19 pandemic, participants were invited to take part in an online questionnaire which measured demographic factors, health measures and multiple behaviours.

Outcomes

We investigated the following behaviours: sleep (number of hours each night on average; given its non-linear association with health outcomes we coded it to 0=6-9 hours and 1= \leq 5 hours or \geq 10 hours), exercise (number of days from 0-7 per week the participants exercised for 30 mins or more; at moderate-vigorous intensity—“working hard enough to raise your heart rate and break into a sweat”), diet (number of portions of fruit & vegetable per day (from 0 to \geq 6; portion guidance was provided), alcohol consumption (never to 4 or more times per week). For each, participants retrospectively reported levels in “the month before the coronavirus outbreak” and then during the fieldwork period (May 2020). Herein, we refer to these reference periods as pre and during lockdown, respectively.

Exposures

Cohort member gender was coded 0=female and 1=male for all analysis. Socioeconomic position was indicated by childhood social class (at 10-14 years old), using the Registrar General’s Social Class scale— I (professional), II (managerial and technical), IIIN (skilled non-manual), IIIM (skilled manual), IV (partly-skilled), and V (unskilled) occupations. Highest educational attainment was also used, categorised into four groups as follows: degree/higher, A levels/diploma, O Levels/GCSEs, or none (for 2001 MCS we used parents’ highest education as many were still undertaking education). Financial difficulties were based on whether individuals (or their parents for 2001 MCS) reported (prior to COVID-19) as managing financially comfortably, all right, just about getting by, and difficult. These were converted into cohort-specific ridit scores to aid interpretation—resulting in relative or slope indices of inequality when used in regression models.³⁷ Ethnicity was recorded as White and non-White—ethnicity analyses are limited to the 1990c and 2001c only owing to a lack of ethnic diversity in older cohorts.

Statistical analyses

We first conducted descriptive analyses for each outcome—calculating average levels and distributions of each outcome pre and during covid-19. We then used separate regression models to examine how gender, ethnicity and SEP were related to lockdown levels of each behaviour; models examining ethnicity and SEP were gender-adjusted. We also adjusted for reported behavioural outcomes prior to lockdown to estimate differences in outcomes attributable to COVID-19 lockdown—without this adjustment, associations were largely of the same direction but with larger effect sizes (data available upon request). To inform understanding of change in these outcomes, we also tabulated calculated change in each outcome (decline, no change, and increase) by each cohort and risk factor group. We then used logistic (sleep) or ordinal (other outcomes) regression models. To aid interpretation of possible deviation of the proportional odds assumption, we additionally used multinomial regression models with each outcome grouped into

low, middle, and high levels. We conducted cohort-specific analyses and conducted meta-analyses to assess pooled associations and formally test for heterogeneity across cohort (I^2 statistic).

To account for possible bias due to missing data, we weighted our analysis using weights constructed from logistic regression models—the outcome was response during the COVID-19 survey, and predictors were demographic, socioeconomic, household, and individual-based predictors of non-response at earlier sweeps, based on previous work in these cohorts.^{38 39} We also used weights to account for the stratified survey designs of the 1946c, 1990c, and 2001c. Stata v15 (STATA corp) was used in all analyses.

Results

Cohort-specific responses were as follows: 1946c: 1241 of 1842; 1958c: 5205 of 8943, 1970c: 4247 of 10458; 1990c: 1921 of 9380; 2001c: 2677 of 9909. The following factors, measured in prior data collection periods, were associated with increased likelihood of response in this COVID-19 dataset: being female, higher education attainment, higher household income, and more favourable self-rated health. Valid outcome data was available in both pre and during measures for the following: Sleep, N=14,171; exercise, N=13,997; alcohol, N=14,297; fruit/vegetables, N=13,623. Outcomes pre and during COVID-19 were each moderately-highly positively correlated—Spearman's R as follows: sleep=0.55, exercise=0.58, alcohol=0.82, fruit/vegetable consumption=0.81. For all outcomes, older cohorts were less likely to report change in behaviour compared with younger cohorts (Supplementary Table 1).

Sleep

The average (mean) amount of sleep (hours per night) were either similar or slightly higher during compared with before lockdown. In each cohort, the variance was higher during (Table 1)—this reflected the fact that more participants reported either reduced or increased amounts of sleep during lockdown (Figure 1). In 2001c compared with older cohorts, more participants reported increased amounts of sleep during lockdown (Figure 1 and Supplementary Table 1).

In logistic regression models, the following were associated with either low or high sleep levels during lockdown (in models adjusting for prior levels): female gender, lower SEP (lower childhood class, education attainment, and financial difficulties), and ethnic minority status (Figure 2). Females and ethnic minorities reported more change in sleep levels during lockdown than males or White participants (Supplementary Table 1). Analyses using multinomial logistic regression suggested that in 2001-1970c males had lower risks of both lower and higher levels of sleep (compared with 6-9 hours), and that lower education and ethnic minority status were associated with higher risk of lower sleep levels during lockdown. However, confidence intervals around these estimates were wide (Supplementary Table 2).

Exercise

Mean exercise frequency levels were similar during and before lockdown (Table 1). As with sleep levels, the variance was higher during, reflecting both reduced and increased amounts of exercise during lockdown (Figure 1). The following were associated with lower exercise levels during lockdown (in models adjusting for prior levels): male gender (in 2001-1970c only; $I^2=60.4\%$), lower SEP (all cohorts; I^2 for education=2.0%), and ethnic minority status ($I^2=0\%$; Figure 2). These findings were largely similar in both ordered and multinomial logistic regression (Supplementary Table 2), and reflected a greater proportion of female, higher SEP, and White participants reporting increases in exercise levels during lockdown (Supplementary Table 1).

Alcohol intake

In 2001c, a larger fraction of participants reported transitions to never drinking during lockdown than in older cohorts (Table 1, Figure 1, and Supplementary Table 1). The 2001c also reported a greater transition to lower numbers of drinks consumed in a given day of drinking (data available upon request). In older cohorts, more participants reported never and the highest frequencies of alcohol (≥ 4 times/week) in lockdown compared with prior (Table 1 and Figure 1).

The following were associated with lower frequency of alcohol consumption during lockdown (in models adjusting for prior levels): female gender (in 2001c only; $I^2=78.6\%$) and ethnic minority status ($I^2=0\%$; Figure 2). This reflected consistent lower levels of drinking in ethnic minority groups, and increased consumption in White participants (Supplementary Table 1). Associations between SEP and alcohol consumption differed by SEP indicator and cohort (I^2 for education= 67.3%); lower education attainment was associated with more frequent drinking in 2001c yet less frequent drinking in 1958c and 1970c (Figure 2). These findings were largely similar in both ordered and multinomial logistic regression (Supplementary Table 2).

Fruit and vegetable intake

Fruit and vegetable intake was broadly similar pre and during lockdown, although increases in consumption were most frequent in 2001c compared with older cohorts (Supplementary Table 1). The following were associated with lower fruit and vegetable consumption (in models adjusting for prior levels): male gender (in 2001c only; $I^2=75.8\%$), and lower SEP (more consistently in younger cohorts for childhood social class and education; I^2 for education= 52.9%); there was no strong evidence for association with ethnic minority status (Figure 2 and Supplementary Table 1). These findings were largely similar in both ordered and multinomial logistic regression (Supplementary Table 2).

Discussion

Main findings

Using data from 5 national British cohort studies, we estimated change in multiple health behaviours pre and during COVID-19 lockdown in the UK (May 2020). Where change in these outcomes was identified, it occurred in both directions—ie, shifts from the middle part of the distribution to both declines and increases in sleep, exercise, and alcohol use. In the youngest cohort (2001c), the following shifts were more evident: increases in exercise, fruit and vegetable intake, sleep, yet reduced alcohol consumption frequency.

Across all outcomes, older cohorts were less likely to report changes in behaviour. After adjustment for prior behaviour levels, during lockdown females were less likely to sleep within the typical/recommended range (6-9 hours) yet exercised more frequently. Lower SEP was associated with lower odds of sleeping within the typical range (6-9 hours), lower exercise participation, and lower consumption of fruit and vegetables. Ethnic minorities were less likely during lockdown to sleep within the typical range (6-9 hours), exercise less frequently, yet had lower regular alcohol consumption. Our findings suggest—for most outcomes measured—to a potential widening of inequalities in health-impacting behavioural outcomes which may have been caused by the COVID-19 lockdown.

Comparison with other studies

In our study the youngest cohort reported increases in sleep during lockdown—similar findings of increased sleep have been reported in many,^{13 17 18 24} but not all⁸ previous studies. Both too much and too little sleep may reflect, and be predictive of, worse mental and physical health.^{40 41} In this sense, the increasing dispersion in sleep we observed may reflect the negative consequences of COVID-19 and lockdown. Females, those of lower SEP, and ethnic minorities were all at higher risk of both lower and higher sleep levels. It is possible that lockdown restrictions and subsequent increases in stress—related to health, job, and family concerns—have affected sleep across multiple generations and potentially exacerbated such inequalities. Indeed, recent work using household panel data in the UK has observed marked increases in anxiety and depression in the UK during lockdown that were largest amongst younger adults.⁴

Our finding on exercise add to existing somewhat mixed state of the evidence. Some studies have reported declines in both self-reported^{12 23} and accelerometry-assessed physical activity,¹⁹ yet this is in contrast to others which report an increase,²² and there is corroborating evidence for increases in some forms of physical activity since online searches for exercise and physical activity appear to have increased.²¹ As in our study, another also reported that males had lower exercise levels during lockdown.²⁰ While we cannot be certain that our findings reflect all changes to physical activity levels—lower intensities exercises were not assessed nor activity in other domains such as in work or travel—the inequalities observed with respect to gender, SEP, and ethnicity may be cause of public health concern.

As for the impact of the lockdown on alcohol consumption, concern was initially raised over the observed rises in alcohol sales in stores at the beginning of the pandemic in the UK⁴² and elsewhere. As with other outcomes our finding suggest movement in actual consumption (frequency) in both directions, with the younger cohort tending to decrease consumption. Existing studies appear largely mixed, suggesting increases consumption,^{9 16 26} with others reporting decreases;^{11 12 23 25} others also report increases, yet use instruments which appear to particularly focus on

capturing increases and not declines.^{8,10} Different methodological approaches and measures used may account for inconsistent finding across studies, along with differences in the country of origin and characteristics of the sample. The closing of pubs and bars and associated reductions in social drinking likely underlies our finding of declines in consumption amongst the youngest cohort. Increases in fruit and vegetable consumption observed in this cohort may have also reflected the considerable social changes attributable to lockdown, including more regular food consumption at home. However, in our study only positive aspects of diet (fruit and veg consumption) were captured—we did not capture information on volume of food, snacking and consumption of unhealthy foods. Indeed, one study reported simultaneous increases in consumption of fruit and vegetables and snacks.¹¹

Further research using additional waves of data collection is required to empirically investigate if the changes and inequalities observed in the current study persist in future. If the changes persist and/or widen, given the relevance of these behaviours to a range of health outcomes including chronic conditions, COVID-19 infection consequences and years of healthy life lost, the public health implications of these changes may be long-lasting.

Methodological considerations

While our analyses provide estimates of change in multiple important outcomes, findings should be interpreted in the context of the limitations of this work, with fieldwork necessarily undertaken rapidly. First, self-reported measures were used—while the two reference periods for recall were relatively close in time, comparisons of change in behaviour may have been biased by measurement error and reporting biases. Further, single measures of each behaviour were used which do not fully capture the entire scope of health-impacting nature of each behaviour. For example, exercise levels do not capture less intensive physical activities, nor sedentary behaviour; while fruit and vegetable intake is only one component of diet. As in other studies investigating changes in such outcomes, we are unable to separate out change attributable to COVID-19 lockdown from other causes—these may include seasonal differences (eg, lower physical activity levels in the pre-COVID-19 winter months), and other unobserved factors which we were unable to account for. If these factors affected the sub-groups we analysed equally (gender, SEP, ethnicity), our analysis of risk factors of change would however not be biased due to this. As in other web surveys,⁴ response rates were generally low—while the longitudinal nature of the cohorts enable predictors of missingness to be accounted for (via sample weights),^{38,39} we can't fully exclude the possibility of unobserved predictors of missing data influencing our results. Finally, we investigated ethnicity using a binary categorisation to ensure sufficient sample sizes for comparisons—we were likely underpowered to investigate differences across the multiple diverse ethnic groups which exist. This warrants future investigation given the substantial heterogeneity within these groups and likely differences in behavioural outcomes.

Conclusion

Our findings highlight the multiple changes to behavioural outcomes that may have occurred due to COVID-19 lockdown, and the differential impacts—across generation, gender, socioeconomic disadvantage (in early and adult life) and ethnicity. Such changes require further monitoring given their possible implications to population health and the widening of health inequalities.

Acknowledgements

We thank the Survey, Data, and Administrative teams at the Centre for Longitudinal Studies and Unit for Lifelong Health and Ageing, UCL, for enabling the rapid COVID-19 data collection to take place. We also thanks Professors Rachel Cooper and Mark Hamer for helpful discussions during the COVID-19 questionnaire design period. DB is supported by the Economic and Social Research Council (grant number ES/M001660/1), DB and AV are supported by The Academy of Medical Sciences / Wellcome Trust (“Springboard Health of the Public in 2040” award: HOP001/1025).

Data availability

2001c, 1990c, 1970c and 1958c data are available from the UK Data Archive: <https://www.data-archive.ac.uk>. 1946c data are available from: <https://www.nshd.mrc.ac.uk/data>

Table 1. Participant characteristics: data from 5 British cohort studies.

	Cohort study, birth year				
	2001	1990	1970	1958	1946
Cohort characteristics and risk factors					
Sample size, N	2164	1661	3804	4574	1080
Age in years	19-20	30-31	50	62	74
Males (%)	49.4%	43.6%	51.3%	50.9%	50.4%
Father's social class, % manual	23.1%	37.7%	58.3%	63.1%	67.3%
Education attainment, % GCSEs-none	47.3%	35.9%	46.6%	49.2%	70.8%
Financial difficulties, % difficult	18.1%	16.1%	21.0%	13.4%	4.3%
Outcomes					
Pre: Sleep (# hours/day), mean (SD)	7.5 (1.4)	7.1 (1.1)	6.8 (1.2)	7.0 (1.2)	6.9 (1.2)
During: Sleep (# hours/day), mean (SD)	8.1 (1.9)	7.4 (1.5)	6.9 (1.5)	7.0 (1.4)	6.9 (1.3)
Pre: Sleep, % 6-9 hours/night	87.1%	93.1%	88.0%	90.0%	89.2%
During: Sleep, % 6-9 hours/night	68.3%	83.5%	81.6%	84.4%	83.9%
Pre: Exercise (#days/week), mean (SD)	3.0 (2.1)	2.7 (2.1)	3.0 (2.2)	3.3 (2.4)	3.2 (2.4)
During: Exercise (#days/week), mean (SD)	3.1 (2.3)	2.9 (2.2)	3.3 (2.4)	3.5 (2.6)	3.3 (2.6)
Pre: Alcohol intake, % never	15.3%	20.5%	16.1%	16.2%	18.5%
During: Alcohol intake, % never	27.7%	25.2%	19.0%	20.9%	20.7%
Pre: Fruit/veg intake (# portions), mean (SD)	3.0 (1.5)	3.4 (1.5)	3.5 (1.6)	3.7 (1.5)	4.0 (1.4)
During: Fruit/veg intake (# portions), mean (SD)	3.2 (1.6)	3.5 (1.6)	3.5 (1.6)	3.7 (1.6)	4.0 (1.4)

Note: estimates are weighted to account for survey non-response.



Figure 1. Pre- and during COVID-19 lockdown distributions of health-related behaviours, by cohort Note: dark green shows overlap, estimates are weighted to account for survey non-response.

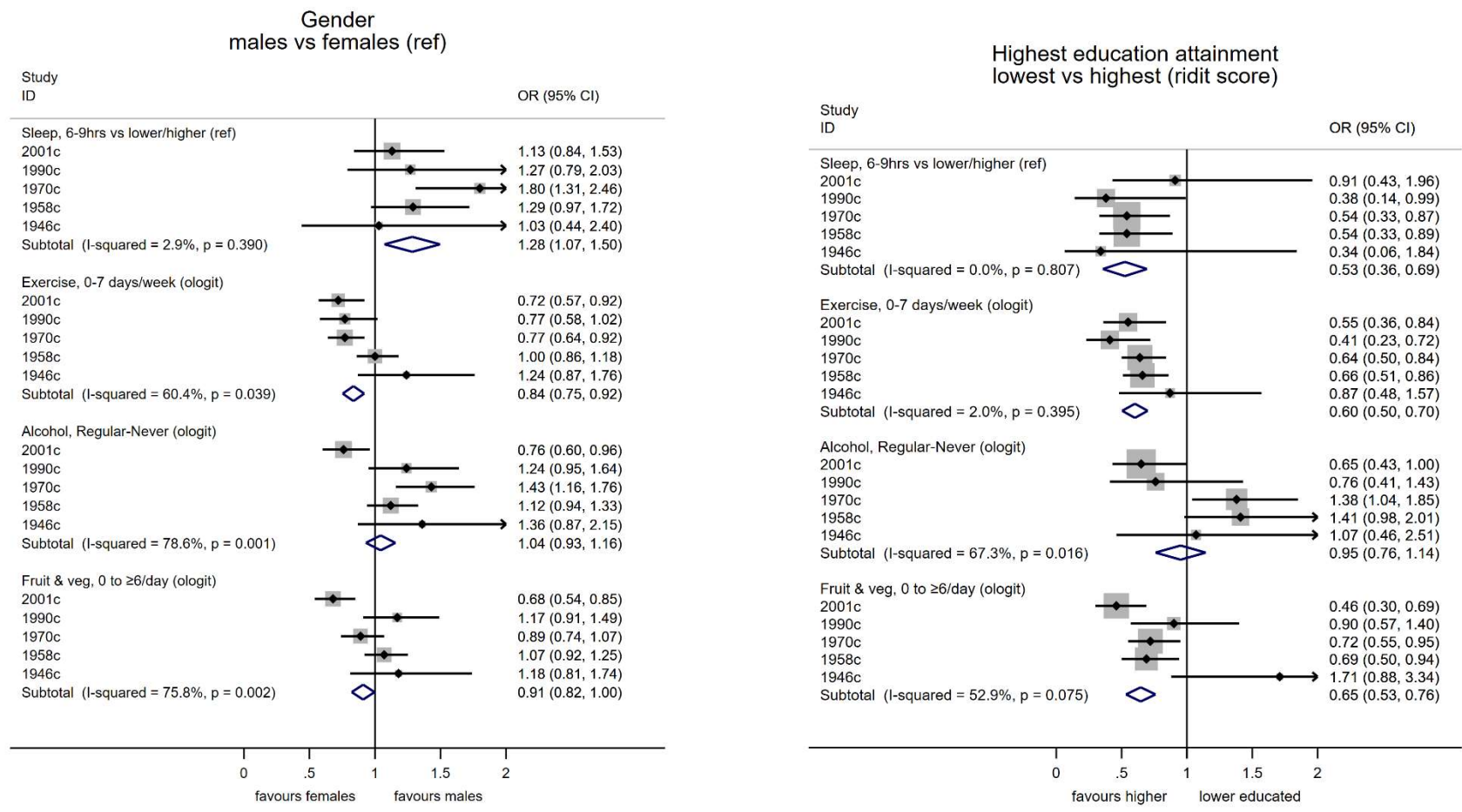
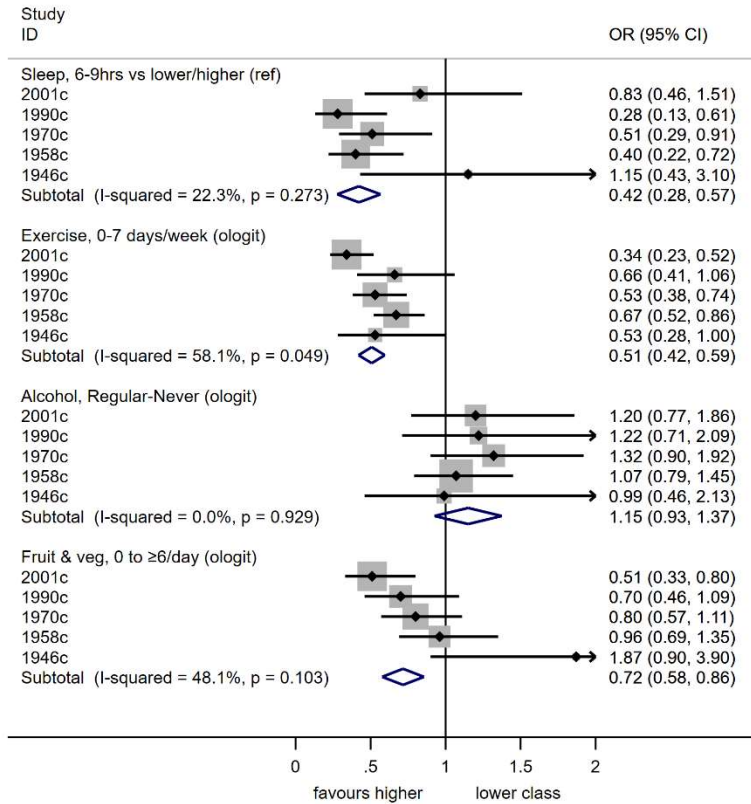
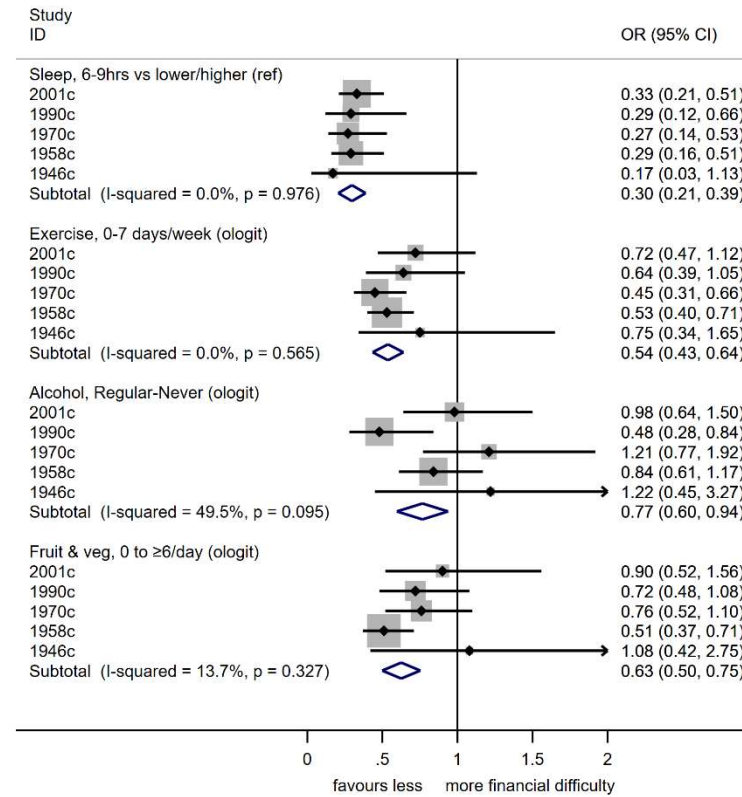


Figure 2. Differences in multiple health behaviours during COVID-19 lockdown (May 2020) compared with prior levels, according to gender, education attainment, and ethnicity: a meta-analysis of 5 cohort studies. Note: estimates are weighted to account for survey non-response; ridit scores represent the odds ratio of the least compared with most disadvantaged socioeconomic position, the relative index of inequality)

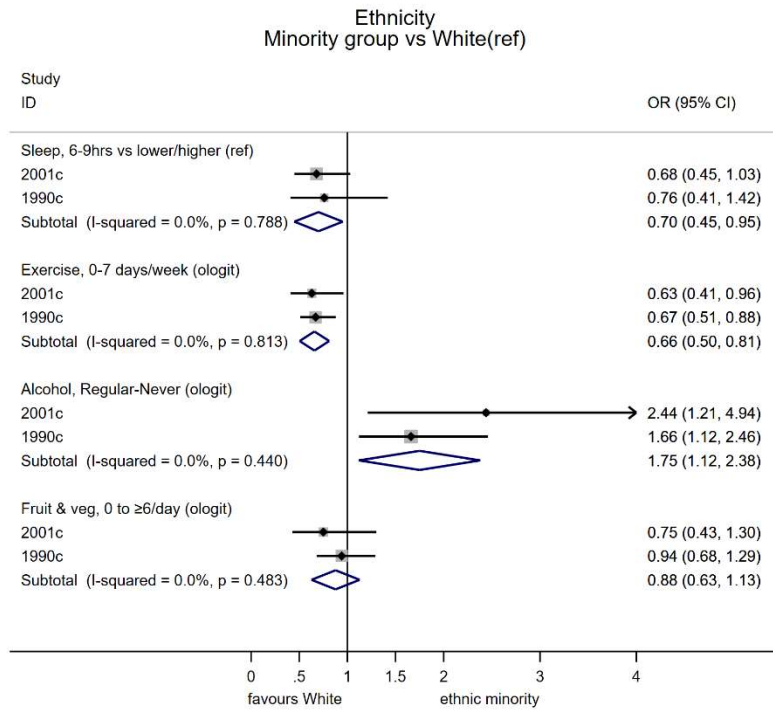
Childhood social class at 10-14y lowest vs highest (ridit score)



Financial difficulties before COVID-19 most vs least difficulty (ridit score)



...Figure 2 continued.



...Figure 2 continued.

Supplementary Table 1. Changes in behaviors before and during COVID-19 lockdown: percentages in each cohort and risk factor group.

1) Risk factors according to all cohorts:

Outcome , reported change during COVID-19 lockdown	<u>Cohort</u>					<u>Gender</u>		<u>Education attainment</u>		<u>Ethnicity</u>	
	2001	1990	1970	1958	1946	Females	Males	High education (degree/higher)	Low education (GCSE/none)	White	Non-white
Sleep											
Less sleep	25.2	21.6	19.5	16.2	13.0	22.5	14.6	17.3	19.7	23.0	28.6
no change	23.0	41.3	53.9	61.2	76.5	48.0	59.3	50.2	57.6	32.0	22.7
More	51.8	37.1	26.5	22.5	10.4	29.5	26.1	32.5	22.7	45.0	48.7
Exercise											
Less exercise	33.7	29.5	20.2	18.8	18.1	21.7	23.5	23.2	21.2	30.8	39.8
no change	30.0	35.3	49.1	56.2	59.8	45.7	51.2	42.7	54.3	32.2	32.2
More	36.3	35.2	30.7	25.1	22.1	32.6	25.3	34.2	24.5	37.0	28.1
Alcohol											
More alcohol	16.7	30.1	24.4	15.4	10.7	21.4	16.2	20.8	17.3	23.6	13.5
no change	47.5	55.1	67.0	72.7	80.1	63.0	69.9	62.6	68.6	48.7	65.2
Less	35.8	14.8	8.6	11.9	9.2	15.6	13.9	16.6	14.1	27.6	21.3
Fruit & Veg											
Less fruit & veg	16.3	16.4	13.9	10.4	5.9	14.5	9.7	12.6	11.3	15.4	22.9
no change	51.7	63.0	70.0	76.6	82.3	66.8	74.2	68.7	73.4	57.7	48.7
More	32.0	20.6	16.2	13.1	11.8	18.7	16.0	18.8	15.3	26.9	28.4

Note: estimates are weighted to account for survey non-response.

2) Risk factors separately in each cohort

Cohort, outcome	reported change during COVID-19 lockdown	Gender		Education attainment		Ethnicity	
		Females	Males	High education (degree/higher)	Low education (GCSE/none)	White	Non-white
2001, sleep	Less sleep	26.2	24.2	21.6	28.5	24.0	34.1
	no change	20.6	25.4	22.9	23.9	24.3	14.5
	More	53.3	50.4	55.5	47.5	51.7	51.4
2001, exercise	Less exercise	28.7	38.8	31.7	37.1	32.4	42.6
	no change	28.0	32.0	29.4	29.6	30.3	27.6
	More	43.3	29.2	38.9	33.2	37.3	29.8
2001, alcohol	More alcohol	17.0	16.4	16.1	18.2	17.7	9.7
	no change	43.5	51.7	43.2	51.4	45.4	62.9
	Less	39.5	32.0	40.7	30.3	36.9	27.5
2001, fruit & veg	Less fruit & veg	16.3	16.4	16.2	15.7	15.0	25.2
	no change	47.4	56.2	48.8	57.6	52.8	42.8
	More	36.3	27.4	35.0	26.7	32.2	32.0
1990, sleep	Less sleep	23.2	19.7	18.8	26.4	21.7	21.2
	no change	38.0	45.5	42.3	39.4	42.4	33.7
	More	38.8	34.9	38.9	34.2	35.9	45.1
1990, exercise	Less exercise	23.7	36.7	27.3	34.4	28.5	36.0
	no change	38.2	31.8	33.0	38.4	34.9	38.2
	More	38.2	31.5	39.7	27.2	36.6	25.8
1990, alcohol	More alcohol	31.7	28.1	30.3	31.1	31.7	18.7
	no change	54.5	56.0	54.8	54.5	53.3	68.4
	Less	13.9	16.0	14.9	14.4	15.1	12.9
1990, fruit & veg	Less fruit & veg	18.5	14.0	16.2	13.8	15.9	20.3
	no change	61.7	64.6	63.6	64.4	64.0	55.6
	More	19.8	21.5	20.2	21.9	20.1	24.1

Cohort, outcome	reported change during COVID-19 lockdown	Gender		Education attainment		Ethnicity	
		Females	Males	High education (degree/higher)	Low education (GCSE/none)	White	Non-white
1970, sleep	Less sleep	25.4	13.8	18.1	20.8	14.5	13.6
	no change	46.2	61.5	51.6	57.1	69.7	72.0
	More	28.4	24.7	30.3	22.2	15.8	14.4
1970, exercise	Less exercise	20.0	20.5	21.4	18.9	14.5	13.6
	no change	44.2	53.9	43.7	54.4	69.7	72.0
	More	35.8	25.7	34.9	26.8	15.8	14.4
1970, alcohol	More alcohol	28.6	20.3	26.3	22.2	14.5	13.6
	no change	62.5	71.5	65.5	69.2	69.7	72.0
	Less	8.9	8.2	8.2	8.6	15.8	14.4
1970, fruit & veg	Less fruit & veg	16.8	11.0	14.5	13.6	14.5	13.6
	no change	64.1	75.6	69.7	72.0	69.7	72.0
	More	19.0	13.4	15.8	14.4	15.8	14.4
1958, sleep	Less sleep	21.9	10.5	16.1	17.2	9.4	11.1
	no change	56.0	66.6	60.4	62.5	75.8	77.1
	More	22.1	23.0	23.5	20.3	14.8	11.8
1958, exercise	Less exercise	18.9	18.6	19.4	16.0	9.4	11.1
	no change	54.1	58.2	50.4	63.4	75.8	77.1
	More	27.0	23.2	30.3	20.6	14.8	11.8
1958, alcohol	More alcohol	16.8	14.0	16.8	15.1	9.4	11.1
	no change	71.1	74.3	72.2	70.4	75.8	77.1
	Less	12.1	11.8	11.0	14.5	14.8	11.8
1958, fruit & veg	Less fruit & veg	13.2	7.5	9.4	11.1	9.4	11.1
	no change	73.6	79.5	75.8	77.1	75.8	77.1
	More	13.2	13.0	14.8	11.8	14.8	11.8

Cohort, outcome	reported change during COVID-19 lockdown	Gender		Education attainment		Ethnicity	
		Females	Males	High education (degree/higher)	Low education (GCSE/none)	White	Non-white
1946, sleep	Less sleep	14.7	11.3	8.9	14.4	6.0	6.0
	no change	70.1	82.8	75.7	79.0	86.1	82.1
	More	15.2	5.9	15.4	6.7	7.9	11.9
1946, exercise	Less exercise	21.4	14.9	17.4	15.3	6.0	6.0
	no change	55.7	63.8	54.9	63.5	86.1	82.1
	More	22.9	21.4	27.7	21.2	7.9	11.9
1946, alcohol	More alcohol	15.0	6.7	14.1	9.9	6.0	6.0
	no change	75.0	84.8	72.2	82.2	86.1	82.1
	Less	10.0	8.5	13.8	7.9	7.9	11.9
1946, fruit & veg	Less fruit & veg	8.4	3.6	6.0	6.0	6.0	6.0
	no change	80.6	83.9	86.1	82.1	86.1	82.1
	More	11.1	12.6	7.9	11.9	7.9	11.9

Supplementary Table 2. Differences in multiple health behaviours during COVID-19 lockdown (May 2020) compared with prior levels, according to gender, education attainment, and ethnicity: findings from multinomial logistic regression, adjusting for prior levels

a) Gender: Males vs females (ref)

Outcome, categorisation	Cohort	Low RRR (95% CI)	Mid (ref)	High RRR (95% CI)
Sleep	2001c	0.82 (0.45,1.51)	ref	0.91 (0.66,1.25)
0-5, 6- 9 (ref), ≥ 10 hours/night	1990c	0.65 (0.40,1.04)	ref	0.88 (0.40,1.95)
	1970c	0.59 (0.43,0.81)	ref	0.62 (0.29,1.34)
	1958c	0.66 (0.48,0.90)	ref	1.36 (0.82,2.25)
	1946c	1.12 (0.44,2.88)	ref	1.22 (0.27,5.48)
Exercise	2001c	1.28 (0.86,1.91)	ref	0.70 (0.54,0.93)
0, 1-4 (ref), ≥ 5 / week	1990c	1.28 (0.81,2.01)	ref	0.76 (0.52,1.12)
	1970c	1.24 (0.90,1.71)	ref	0.85 (0.66,1.08)
	1958c	0.98 (0.75,1.29)	ref	1.00 (0.79,1.26)
	1946c	1.23 (0.66,2.29)	ref	1.07 (0.62,1.84)
Alcohol	2001c	1.64 (1.02,2.62)	ref	0.67 (0.49,0.93)
Drink ≥ 4 times/week, less to monthly (ref), never	1990c	0.92 (0.55,1.54)	ref	1.61 (1.01,2.57)
	1970c	0.67 (0.50,0.91)	ref	2.06 (1.31,3.22)
	1958c	0.87 (0.66,1.15)	ref	1.04 (0.74,1.46)
	1946c	0.92 (0.39,2.18)	ref	1.53 (0.71,3.31)
Fruit and vegetable consumption	2001c	1.15 (0.75,1.78)	ref	0.54 (0.31,0.93)
0-1, 1-5 (ref), \geq portions/day	1990c	1.06 (0.68,1.64)	ref	1.12 (0.63,2.00)
	1970c	1.23 (0.82,1.86)	ref	0.78 (0.54,1.13)
	1958c	1.44 (0.94,2.22)	ref	0.92 (0.66,1.27)
	1946c	2.09 (0.53,8.27)	ref	0.65 (0.29,1.47)

b) SEP: lowest vs highest education group (relative index of inequality)

Outcome, categorisation	cohort	Low RRR (95% CI)	Mid (ref)	High RRR (95% CI)
Sleep	2001c	3.15 (1.07,9.26)	ref	0.74 (0.34,1.65)
0-5, 6- 9 (ref), ≥ 10 hours/night	1990c	3.41 (1.52,7.66)	ref	1.72 (0.33,9.13)
	1970c	2.40 (1.41,4.10)	ref	0.96 (0.37,2.50)
	1958c	1.34 (0.76,2.35)	ref	1.21 (0.42,3.54)
	1946c	4.03 (0.64,25.44)	ref	0.46 (0.03,6.29)
Exercise	2001c	1.58 (0.63,3.95)	ref	0.55 (0.34,0.91)
0, 1-4 (ref), ≥ 5 / week	1990c	2.38 (0.98,5.81)	ref	0.35 (0.19,0.66)
	1970c	1.48 (0.94,2.32)	ref	0.8 (0.55,1.17)
	1958c	2.71 (1.66,4.43)	ref	1.19 (0.81,1.74)
	1946c	2.28 (0.85,6.12)	ref	0.5 (0.18,1.36)
Alcohol	2001c	1.33 (0.53,3.32)	ref	0.73 (0.42,1.27)
Drink ≥ 4 times/week, less to monthly (ref), never	1990c	2.61 (0.93,7.34)	ref	0.65 (0.23,1.84)
	1970c	0.64 (0.41,1.00)	ref	1.01 (0.55,1.85)
	1958c	0.93 (0.51,1.70)	ref	1.7 (0.95,3.03)
	1946c	0.46 (0.11,2.01)	ref	1.09 (0.19,6.20)
Fruit and vegetable consumption	2001c	2.35 (0.80,6.93)	ref	0.49 (0.24,0.98)
0-1, 1-5 (ref), \geq portions/day	1990c	0.97 (0.37,2.52)	ref	1.59 (0.47,5.39)
	1970c	1.35 (0.75,2.42)	ref	0.98 (0.54,1.80)
	1958c	1.53 (0.85,2.75)	ref	0.73 (0.30,1.80)
	1946c	1.65 (0.12,23.11)	ref	2.77 (1.12,6.83)

c) Ethnicity: non-white vs white

Outcome, categorisation	cohort	Low- RRR (95% CI)	Mid (ref)	High RRR (95% CI)
Sleep	2001c	2.25 (1.07,4.72)	ref	1.19 (0.74,1.90)
0-5, 6- 9 (ref), ≥ 10 hours/night	1990c	0.88 (0.51,1.51)	ref	2.2 (0.82,5.89)
Exercise	2001c	1.05 (0.59,1.88)	ref	0.35 (0.20,0.61)
0, 1-4 (ref), ≥ 5 / week	1990c	1.41 (0.85,2.35)	ref	0.74 (0.47,1.19)
Alcohol	2001c	2.17 (0.35,13.55)	ref	2.52 (1.67,3.82)
Drink ≥ 4 times/week, less to monthly (ref), never	1990c	1.15 (0.58,2.26)	ref	2.84 (1.74,4.62)
Fruit and vegetable consumption	2001c	1.30 (0.51,3.33)	ref	0.89 (0.40,1.99)
0-1, 1-5 (ref), \geq portions/day	1990c	1.54 (0.87,2.73)	ref	0.86 (0.39,1.92)

Note: estimates are weighted to account for survey non-response

References

1. Douglas M, Katikireddi SV, Taulbut M, et al. Mitigating the wider health effects of covid-19 pandemic response. *BMJ* 2020;369:m1557. doi: 10.1136/bmj.m1557
2. Marmot M, Allen J. COVID-19: exposing and amplifying inequalities. *J Epidemiol Community Health* 2020;jech-2020-214720. doi: 10.1136/jech-2020-214720
3. Joyce R, Xu X. Sector shutdowns during the coronavirus crisis: which workers are most exposed. *Institute for Fiscal Studies Briefing Note BN278* 2020;6
4. Pierce M, Hope H, Ford T, et al. Mental health before and during the COVID-19 pandemic: a longitudinal probability sample survey of the UK population. *The Lancet Psychiatry* 2020
5. Gakidou E, Afshin A, Abajobir AA, et al. Global, regional, and national comparative risk assessment of 84 behavioural, environmental and occupational, and metabolic risks or clusters of risks, 1990–2016: a systematic analysis for the Global Burden of Disease Study 2016. *Lancet* 2017;390(10100):1345-422.
6. Stringhini S S. Association of socioeconomic position with health behaviors and mortality. *JAMA* 2010;303(12):1159-66. doi: 10.1001/jama.2010.297
7. Williamson EJ, Walker AJ, Bhaskaran K, et al. OpenSAFELY: factors associated with COVID-19 death in 17 million patients. *Nature* 2020:1-11.
8. The Policy Institute. Life under lockdown: coronavirus in the UK, 2020.
9. Wardell J, Kempe T, Rapinda KK, et al. Drinking to cope during the COVID-19 pandemic: The role of external and internal stress-related factors in coping motive pathways to alcohol use, solitary drinking, and alcohol problems. 2020
10. Sidor A, Rzymiski P. Dietary Choices and Habits during COVID-19 Lockdown: Experience from Poland. *Nutrients* 2020;12(6):1657.
11. Scarmozzino F, Visioli F. Covid-19 and the Subsequent Lockdown Modified Dietary Habits of Almost Half the Population in an Italian Sample. *Foods* 2020;9(5):675.
12. Rodríguez-Pérez C, Molina-Montes E, Verardo V, et al. Changes in Dietary Behaviours during the COVID-19 Outbreak Confinement in the Spanish COVIDiet Study. *Nutrients* 2020;12(6):1730.
13. Ong J, Lau T, Massar S, et al. COVID-19 Related Mobility Reduction: Heterogenous Effects on Sleep and Physical Activity Rhythms. *arXiv preprint arXiv:200602100* 2020
14. Mitchell ES, Yang Q, Behr H, et al. Self-reported food choices before and during COVID-19 lockdown. *medRxiv* 2020
15. Marelli S, Castelnuovo A, Somma A, et al. Impact of COVID-19 lockdown on sleep quality in university students and administration staff. *J Neurol* 2020:1-8.
16. Anne K, Ekaterini G, Falk K, et al. Did the General Population in Germany Drink More Alcohol during the COVID-19 Pandemic Lockdown? *Alcohol Alcohol* 2020
17. Juliana LM, Mariano S, Andrés GD. Effects of lockdown on human sleep and chronotype during the COVID-19 pandemic. *Curr Biol* 2020
18. Fitbit. The impact of coronavirus on global sleep patterns <https://blog.fitbit.com/covid-19-sleep-patterns/>. 2020
19. Fitbit. The impact of coronavirus on global activity <https://blog.fitbit.com/covid-19-global-activity/>. 2020
20. Giustino V, Parroco AM, Gennaro A, et al. Physical Activity Levels and Related Energy Expenditure during COVID-19 Quarantine among the Sicilian Active Population: A Cross-Sectional Online Survey Study. *Sustainability* 2020;12(11):4356.
21. Ding D, del Pozo Cruz B, Green MA, et al. Is the COVID-19 lockdown nudging people to be more active: a big data analysis: BMJ Publishing Group Ltd and British Association of Sport and Exercise Medicine, 2020.
22. Di Renzo L, Gualtieri P, Pivari F, et al. Eating habits and lifestyle changes during COVID-19 lockdown: an Italian survey. *J Transl Med* 2020;18(1):1-15.
23. Deschasaux-Tanguy M, Druesne-Pecollo N, Esseddik Y, et al. Diet and physical activity during the COVID-19 lockdown period (March-May 2020): results from the French NutriNet-Sante cohort study. *medRxiv* 2020
24. Cellini N, Canale N, Mioni G, et al. Changes in sleep pattern, sense of time and digital media use during COVID-19 lockdown in Italy. *J Sleep Res* 2020:e13074.
25. Ammar A, Brach M, Trabelsi K, et al. Effects of COVID-19 Home Confinement on Eating Behaviour and Physical Activity: Results of the ECLB-COVID19 International Online Survey. *Nutrients* 2020;12(6):1583.
26. Biddle N, Edwards B, Gray M, et al. Alcohol consumption during the COVID-19 period: May 2020. *COVID-19 Briefing Paper* 2020

27. Singer JD, Willett JB. Applied longitudinal data analysis: Modeling change and event occurrence: Oxford university press 2003.
28. Gardiner L. Stagnation generation: The case for renewing the intergenerational contract: Resolution Foundation 2016.
29. VanderWeele TJ. Outcome-wide epidemiology. *Epidemiology (Cambridge, Mass)* 2017;28(3):399.
30. World Health Organization. Handbook on health inequality monitoring: with a special focus on low-and middle-income countries: World Health Organization 2013.
31. Elhakeem A, Cooper R, Bann D, et al. Childhood socioeconomic position and adult leisure-time physical activity: a systematic review. *International Journal of Behavioral Nutrition and Physical Activity* 2015;12(1):92.
32. Wadsworth M, Kuh D, Richards M, et al. Cohort profile: The 1946 National Birth Cohort (MRC National Survey of Health and Development). *Int J Epidemiol* 2006;35(1):49-54.
33. Power C, Elliott J. Cohort profile: 1958 British birth cohort (National Child Development Study). *Int J Epidemiol* 2006;35(1):34-41.
34. Elliott J, Shepherd P. Cohort profile: 1970 British birth cohort (BCS70). *Int J Epidemiol* 2006;35(4):836-43.
35. Connelly R, Platt L. Cohort Profile: UK Millennium Cohort Study (MCS). *Int J Epidemiol* 2014;43(6):1719-25.
36. Calderwood L, Sanchez C. Next Steps (formerly known as the Longitudinal Study of Young People in England). *Open Health Data* 2016;4
37. Mackenbach JP, Kunst AE. Measuring the magnitude of socio-economic inequalities in health: An overview of available measures illustrated with two examples from Europe. *Soc Sci Med* 1997;44(6):757-71. doi: doi: 10.1016/S0277-9536(96)00073-1
38. Silverwood RJ, Calderwood L, Sakshaug JW, et al. A data driven approach to understanding and handling non-response in the Next Steps cohort.
39. Mostafa T, Narayanan M, Pongiglione B, et al. Improving the plausibility of the missing at random assumption in the 1958 British birth cohort: A pragmatic data driven approach.
40. Jike M, Itani O, Watanabe N, et al. Long sleep duration and health outcomes: A systematic review, meta-analysis and meta-regression. *Sleep Med Rev* 2018;39:25-36.
41. Luyster FS, Strollo PJ, Zee PC, et al. Sleep: a health imperative. *Sleep* 2012;35(6):727-34.
42. Office for National Statistics. Retail sales, Great Britain: March 2020, 2020.