

Examining side effect variation in antipsychotic treatment and schizophrenia spectrum disorders

Maria S. Neumeier¹, Stephanie Homan, Ph.D.¹, Stefan Vetter, M.D.¹, Erich Seifritz, M.D.¹, John M. Kane, M.D.^{2,3,4}, Maximilian Huhn, M.D.⁵, Stefan Leucht, M.D.⁵, & Philipp Homan, M.D., Ph.D.^{1,2,3,4*}

¹ University Hospital of Psychiatry Zurich, Zurich, Switzerland.

² Center for Psychiatric Neuroscience, Feinstein Institute for Medical Research, Manhasset, NY, USA.

³ Division of Psychiatry Research, Zucker Hillside Hospital, Northwell Health, New York, NY, USA.

⁴ Department of Psychiatry, Zucker School of Medicine at Northwell/Hofstra, Hempstead, NY, USA.

⁵ Department of Psychiatry and Psychotherapy, Technical University of Munich, School of Medicine, Munich, Germany.

Background: Side effects of antipsychotic drugs play a key role in non-adherence and discontinuation of treatment in schizophrenia spectrum disorders (SSD). Precision medicine aims to minimize such side effects by selecting the right treatment for the right patient. However, to determine the extent of precision medicine that is required, we need to (1) show that there is indeed variation in side effects and (2) estimate the amount of variation in those side effects between patients. While clinical impression suggests that such variation is considerable, analyzing how side effect variation differs between treatment and control can address this question more formally. Here, we hypothesized to find larger side effect variation in treatment compared with control in patients treated with second generation antipsychotics. Methods: We included double-blind, placebo-controlled, randomized controlled trials of adults with a diagnosis of SSD and prescription for licensed antipsychotic drugs. Standard deviations of the pre-post treatment differences of weight gain, prolactin levels, and corrected QT (QTc) times were extracted. Data quality and validity were ensured by following the PRISMA guidelines. The outcome measure was the overall variability ratio of treatment to control across randomized controlled trials (RCTs). Individual variability ratios were weighted by the inverse-variance method and entered into a random-effects model. Results: We included N = 16578 patients for weight gain, N = 16633 patients for prolactin levels, and N = 10384 patients for QTc time. Variability ratios (VR) were significantly increased for weight gain (VR = 1.08; 95% CI: 1.02 - 1.14; P = 0.004) and prolactin levels (VR = 1.38; 95% CI: 1.17 - 1.62; P < 0.001) but did not reach significance for QTc time (VR = 1.05; 95% CI: 0.98 - 1.12; P = 0.135). Conclusion: We found increased variability in major side effects in patients with SSD under treatment with second generation antipsychotics, suggesting that subgroups of patients or even individual patients may benefit from improved treatment allocation through stratified or personalized medicine, respectively.

Introduction

Antipsychotics are a fundamental component in the treatment of schizophrenia spectrum disorders (SSD). Yet, a major problem are side effects which play a key role in non-adherence and discontinuation.¹⁻⁵ A common hypothesis among researchers and clinicians alike is that although side effects are pervasive, not all patients are equally susceptible. However, empirical support for this hypothesis is lacking, as randomized controlled trials (RCTs) or conventional meta analyses by design cannot answer whether such side effect

variation does exist.^{6,7}

Indeed, efficacy, safety, and side effect profiles of antipsychotic medications are established by showing how antipsychotics act on average. Thus, such studies can provide us with average side effects, but they cannot tell us anything about individual patients or subgroups.^{8,9} This may leave clinicians unsatisfied as they might want to know who is vulnerable in particular. Nevertheless, before searching for potential biomarkers that might predict individual susceptibility, we first need to quantify the scope for such predictors, in other words, how big the need for individual predictors really is. An approach to answering this question is by shifting the focus from the means to the variances of side effects.¹⁰ By comparing the variances between treatment and control groups of RCTs,¹¹ greater variability in treatment would indicate that there is a component of variation, the side effect-by-patient or side effect-by-subgroup interaction, that indicates variability of side effects.¹⁰ Note that this method¹² has recently been

Correspondence concerning this article should be addressed to Philipp Homan, M.D., Ph.D., University Hospital of Psychiatry Zurich, Lenggstrasse 31, 8032 Zurich, Switzerland. E-mail: philipp.homan@bli.uzh.ch

applied for antipsychotics,⁶ antidepressants,^{7,13,14} and brain stimulation.¹⁵ It is worth noting that these studies found little evidence for treatment effect variation.^{6,7,13,14} Importantly, in the case of pre-post differences used as input for a meta-analysis of variance it is crucial to think carefully about the way the variability ratio is expressed,^{11,14,16} as the use of the coefficient of variation ratio (CVR) that has been proposed as an alternative of the variability ratio (VR)¹¹ may lead to unreliable results.^{12,16}

A recently published study investigated the individual treatment response in antipsychotics and brought surprising results.^{6,17} By comparing the variability between treatment and control groups, no evidence was found for an increase in variability in the treatment group. What might sound counter-intuitive at first raises the question of how big the need for precision medicine really is. However, that study evaluated the evidence for treatment effect variation. It is in principle possible that although such variation in treatment effects is not as high as sometimes assumed¹⁸, it does exist in the susceptibility for side effects. In other words, even if there is little variation in response to treatment between patients, there might still be variation in side effects, and the need for precision medicine might then be to optimize treatment allocation with respect to side effect profiles.¹⁹

Side effects that are particularly relevant in antipsychotic treatment are weight gain⁵, hyperprolactinemia, and QTc prolongation.¹⁹ Weight gain is a frequently observed side effect that can affect physical health and might influence treatment adherence. Every additional kilogram of weight gain can contribute to an increased risk of heart failure,²⁰ cardiovascular disease,²¹ and diabetes.²² In addition, treatment discontinuation is often seen in patients with increase of weight under treatment.²³ High prolactin levels can lead to symptoms like decreased bone mass, galactorrhea, and fertility problems in men and women. Further possible symptoms are menstrual disturbances in female patients and decreased libido and erectile dysfunction in male patients.²⁴ These symptoms are frequent, but often underreported by patients and undernoticed as well as undertreated by clinicians.^{25,26} They furthermore might lead to loss in quality of life and might be a reason for treatment discontinuation^{1,27} and illness relapse, which together with persistent positive symptoms^{28–31} may severely impact recovery and therapeutic alliance.³² Prolongation of QTc was observed in 7 of 14 antipsychotics compared by placebo in the intergroup comparison by Huhn and colleagues.³³ Importantly, torsade de pointes tachycardia and sudden cardiac death is a possible severe consequence of QTc prolongation.³⁴ Such cardiac events are one of the factors that lead to the loss of life expectancy observed in patients with SSD.^{35–37}

In summary, antipsychotic side effects are highly relevant for long-term outcome and adherence in treatment of positive symptoms in SSD. The question remains whether variability

in side effects is high enough to warrant efforts of treatment stratification or personalisation. Here, we compared the variances of side effects including weight gain, prolactin level and QTc-time between treatment and control groups to address this question and to evaluate the evidence for the presence of side effect variability. Consistent with the clinical impression that patients seem to vary in their susceptibility to side effects, we hypothesized that the variability in side effects would be higher in the treatment compared to the control groups across all published trials in SSD and antipsychotics.³³

Methods

Search strategy and selection criteria

Using the data from the recent meta-analysis by Huhn and colleagues, we included placebo-controlled trials in adults with schizophrenia spectrum disorders. Studies in patients with first episode psychosis, treatment resistance, mainly negative symptoms, other medical diseases and relapse-prevention studies were excluded. We accepted orally administered atypical (second generation) antipsychotics and typical (first generation) antipsychotics in published and unpublished studies. Long- and short-acting intramuscular injections were excluded, because they are often used in relapse prevention or emergency treatment. Due to quality concerns, studies from mainland China were excluded. As data sources we used MEDLINE, Cochrane Central Register of Controlled Trials (CENTRAL), Embase, Biosis, PsycINFO, PubMed, ClinicalTrials.gov, WHO International Clinical Trials Registry Platform and the US Food and Drug Administration until January 8 2019. Data quality and validity were ensured by following the PRISMA guidelines.³⁸ For missing data, we contacted study authors.

For the analysis, we used the standard deviations of pre-post differences in side effects. The primary outcome was the overall variability ratio of side effects in treatment versus control groups. Standard deviations (SD) and number of patients (N) were extracted for weight gain, prolactin level and QTc time. The units used were kg for weight gain, ng/mL for prolactin levels, and ms for QTc time. Some studies provided data for all of the three side effects, whereas the majority of the studies contained less data (see Results).

Statistical analysis

If patients or subgroups differ in their susceptibility to side effects, we would expect to observe increased variances in the treatment- compared with the control group. To test this, we computed the log variability ratio (log VR) by comparing the relative variability of side effects under treatment versus control:

$$\log VR = \log \left(\frac{SD_{Tx}}{SD_{Ct}} \right) + \frac{1}{2(n_{Tx} - 1)} - \frac{1}{2(n_{Ct} - 1)}$$

where SD_{Tx} was the reported sample SD for side effects under treatment, SD_{Ct} was the reported sample SD for side effects under control, n_{Tx} was the treatment sample size, and n_{Ct} the control sample size. The corresponding sampling variance ($s^2_{\log VR}$) for each comparison can be expressed as follows:

$$s^2_{\log VR} = \frac{1}{2(n_{Tx} - 1)} + \frac{1}{2(n_{Ct} - 1)}$$

The individual variability ratios were weighted with the inverse of this sampling variance³⁹ and entered into a random-effects model to quantify the overall variability ratio of side effects. For better interpretability, results were back-transformed from the logarithmic scale. Here, a variability ratio greater than one would indicate a higher side effect variability in treatment compared to control, whereas a variability ratio smaller than one indicates less side effect variability under treatment compared with control.

Data and code availability

The analysis was performed from September 2019 to May 2020, using the R package metafor³⁹(version 2.1.0). The manuscript was produced with the R packages rmarkdown (version 2.1); represearch (version 0.0.0.9000; <https://github.com/phoman/represearch/>); knitr (version 1.26); and papaja (version 0.1.0.9942). All data and code are freely available online to ensure reproducibility at <https://github.com/homanlab/sideeffects/>.

Results

Overall reporting details

Together, we screened $N = 151$ studies from the original meta-analysis by Huhn and colleagues³³ as these studies reported data on at least one of the three side effects that we were interested in. Of these studies, $N = 94$ (62%) had missing variance measures despite reported means for at least one of the three side effects. We thus included the $N = 60$ (40%) studies that did report variance measures for at least one of the side effects of interest.

Weight gain

For weight gain, we included 51 RCTs, with 72 comparisons of antipsychotic drugs with placebo to investigate the individual occurrence of weight gain in patients. All together we included $N = 16578$ patients diagnosed with schizophrenia or schizoaffective disorder. There were 11373 (69%) patients randomly allocated to the treatment group, and 5205 (31%) to the placebo group. Overall, the variability for weight

gain was higher under treatment than under control ($VR = 1.08$; 95% CI: 1.02 - 1.14; $P = 0.004$; Figure 1). Individual comparisons between drugs across studies indicated marked differences between individual antipsychotics ($VR = 1.08$; 95% CI: 1.02 - 1.14; $P = 0.004$; Figure 2).

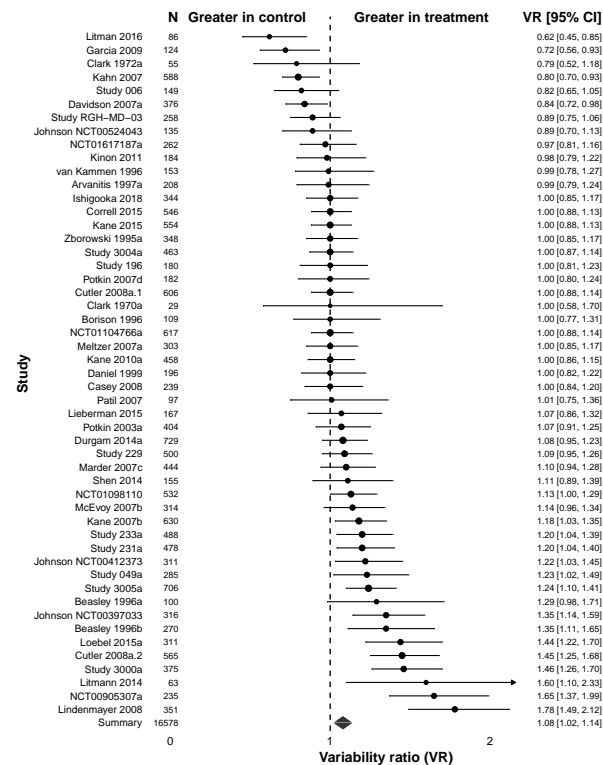


Figure 1. Variability ratio for weight gain. The forest plot shows the VR together with its 95% confidence interval (CI) for treatment versus control. All included studies^{40–92} are also listed in Table S1.

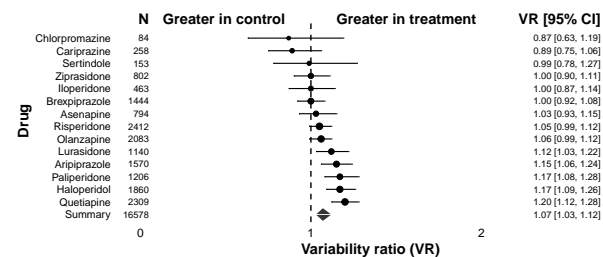


Figure 2. Variability ratio for weight gain for individual antipsychotics. The forest plot shows the VR together with its 95% confidence interval (CI) for treatment versus control. All included studies^{40–92} are also listed in Table S1.

Hyperprolactinemia

For hyperprolactinemia, we included 50 RCTs, with 71 comparisons of antipsychotic drugs with placebo. All together we included $N = 16633$ patients diagnosed with schizophrenia

4

or schizoaffective disorder. There were 11409 (69%) patients randomly allocated to the treatment group, and 5224 (31%) to the placebo group. Overall, the variability for hyperprolactinemia was higher under treatment than under control (VR = 1.38; 95% CI: 1.17 - 1.62; $P < 0.001$; Figure 3). Individual comparisons between drugs across studies indicated marked differences between individual antipsychotics (VR = 1.38; 95% CI: 1.17 - 1.62; $P < 0.001$; Figure 4).

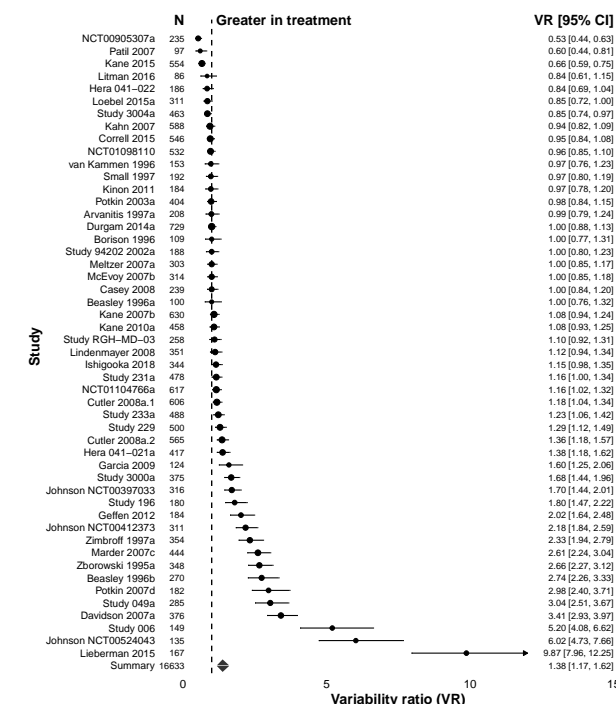


Figure 3. Variability ratio for hyperprolactinemia. The forest plot shows the VR together with its 95% confidence interval (CI) for treatment versus control. All included studies^{40,41,43-47,49-57,59,61,63,64,66-68,71,73-78,81-89,91-99} are also listed in Table S1.

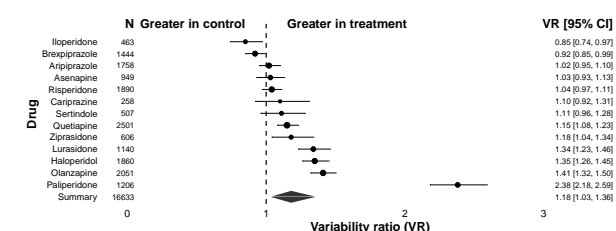


Figure 4. Variability ratio for hyperprolactinemia for individual antipsychotics. The forest plot shows the VR together with its 95% confidence interval (CI) for treatment versus control. All included studies^{40,41,43-47,49-57,59,61,63,64,66-68,71,73-78,81-89,91-99} are also listed in Table S1.

QTc prolongation

For QTc prolongation, we included 29 RCTs, with 46 comparisons of antipsychotic drugs with placebo. All together we included N = 10384 patients diagnosed with schizophrenia or schizoaffective disorder. There were 7439 (72%) patients randomly allocated to the treatment group, and 2945 (28.00%) to the placebo group. Even though the variability for QTc prolongation was higher under treatment than under control, the difference did not reach statistical significance (VR = 1.05; 95% CI: 0.98 - 1.12; $P = 0.135$; Figure 5).

However, individual comparisons between drugs across studies indicated marked differences between individual antipsychotics, with sertindole and haloperidol leading to significant increases in variability compared to control (VR = 1.05; 95% CI: 0.98 - 1.12; $P = 0.135$; Figure 6).

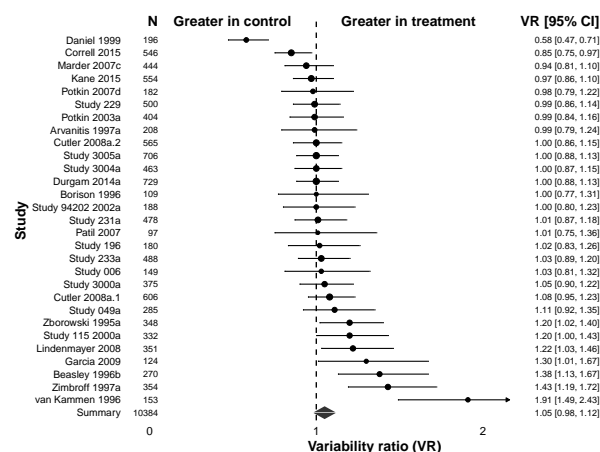


Figure 5. Variability ratio for QTc prolongation. The forest plot shows the VR together with its 95% confidence interval (CI) for treatment versus control. All included studies^{41,44,50,51,53-59,61,67,69,73,75-79,84,85,88,92,93,98,99} are also listed in Table S1.

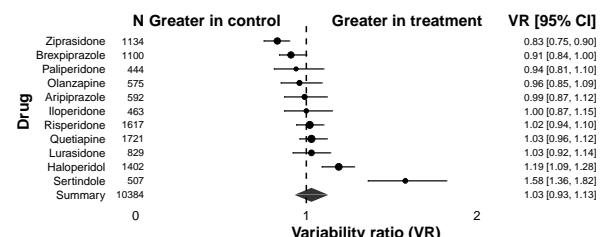


Figure 6. Variability ratio for QTc prolongation for individual antipsychotics. The forest plot shows the VR together with its 95% confidence interval (CI) for treatment versus control. All included studies^{41,44,50,51,53-59,61,67,69,73,75-79,84,85,88,92,93,98,99} are also listed in Table S1.

Discussion

Summary

This study assessed the variability in the three major side effects of antipsychotic treatment in schizophrenia spectrum disorders. Evaluating all studies that reported variance measures for at least one of the investigated sideeffects,³³ we found that the reporting of variances (standard deviations or standard errors) was overall inconsistent. In terms of variability of side effects, we found that the variability for weight gain and prolactin elevation was indeed significantly increased in patients who received treatment compared to those who received placebo. For QTc prolongation, this increase did not reach significance. Together, our results suggest that there is indeed marked variability in the occurrence of side effects in antipsychotic treatment.

Aim of the study

This study had a specific aim. We wanted to quantify the evidence in support of a widely shared hypothesis in the field, relevant for clinicians as much as for translational researchers. This hypothesis states that subgroups of patients or even individual patients differ substantially in their susceptibility to side effects of antipsychotic treatment. We do know from clinical trials and meta-analyses that some antipsychotics are more associated with specific side effects than others. For example, clozapine and olanzapine are strongly associated with weight gain,^{19,33,100} QTc-time prolongation is most distinct in sertindole and amisulpride³³, and prolactin level elevation in paliperidone and risperidone.³³ However, these data cannot address the question whether there is variability in subgroups or individual patients. Such side effect-by-subgroup or side effect-by-patient interaction would be a prime example for the need of a more stratified or personalized medicine, respectively, which allocates treatments according to side effect profiles of subgroups or individual patients. The presence of such subgroups or individual patients would result in an increase of the side effect variability of treated patients compared to those who received placebo.^{6,12} The amount of this increase can be captured by the variability ratio (VR) which compares the variability of treatment versus control for each side effect. Thus, a VR of 1 would indicate equal variability in both groups, a VR greater than 1 would indicate greater variability in the treatment group, whereas a VR less than 1 would indicate lower variability in the treatment group. A VR higher than 1 is thus evidence for the presence of sideeffect variability. Notably, however, it cannot determine whether this variability relates to subgroups or individual patients.¹⁰

Rationale

We evaluated side effects variability for two main reasons. First, their occurrence has a potential impact on treatment

adherence and physical health of patients. Non-adherence in treatment and primarily medication mal-compliance are common difficulties in the treatment of psychiatric patients and seem to influence each other mutually.² Importantly, the experience³ or just the worry¹ about intolerable side effects is one of the main reasons for treatment discontinuation. Premature withdrawal of medication, both in the treatment of acute psychosis¹⁰¹ and in relapse prevention¹⁰² is associated with recurrence or aggravation of disease. Here we focused on weight gain, prolactin levels, and QTc-time because these values are objectifiable (in contrast to psychopathology assessments) and frequently measured. More importantly, their occurrence might cause serious health consequences and has severe implications for treatment adherence. Second, clinical experience suggests that patients do indeed differ in their susceptibility to side effects, indicating that there is a potential to improve treatment allocation by taking into account such variability. A recent meta-analysis on antipsychotics found discrete efficacy differences whereas differences in side effects were more pronounced. Those differences, however, refer to differences of groups, or in other words, side effects on average. The findings of the current study complement this by providing evidence that subgroups of patients or even individual patients are likely to have a higher tendency to develop antipsychotic side effects.

Reporting

Altogether we included 43595 patients from 60 studies. Only for about 40% of studies included in a previous meta-analysis³³ variance data for at least one of the side effects of interest (weight gain, prolactin levels, QTc prolongation) were available. In about 62% of the studies included³³ data were incomplete such that means but not standard deviations were reported. Although we did contact authors for missing data whenever possible, we received missing data only for three studies. In summary, consistent reporting of antipsychotic side effects, specifically with respect to variability measures, is currently missing in the literature and should be improved in future studies.

Weight gain

Weight gain in antipsychotics, especially in second generation antipsychotics,¹⁰³ is a severe side effect that can contribute to metabolic dysregulation. Importantly, every kg of weight gain leads to a linear increase in the risk of cardiovascular diseases²¹, heart failure²⁰, and diabetes²². Clozapine, olanzapine, zotepine and sertindole have the most severe impact in gaining weight. Some studies showed that a lower BMI at baseline¹⁰⁴ and female gender¹⁰⁵ can lead to more weight gain, whereas other studies found that male gender and higher BMI at baseline are related a higher risk of metabolic disturbances.¹⁹ Our findings provide evidence that some patients are indeed more susceptible to antipsychotic

weight gain than others. As antipsychotics in the treatment for schizophrenia and related diseases is often recommended to be taken as a relapse prevention for a longer period,^{102,106} patients are likely to gain more weight during their treatment over months and years. Together, this suggests that there is a potential to improve long-term health and adherence by identifying the subgroups or individual patients that are particularly prone to weight gain. Preliminary evidence suggests that a dysregulated striatal reward circuit contributes to weight gain susceptibility.^{5,107}

Hyperprolactinemia

Prolactin level elevations occur in up to 70% of patients¹⁰⁸ under the treatment with antipsychotic drugs. By blocking dopamine D2 receptors on lactotroph cells a disinhibition of the synthesis and secretion of prolactin is observed.^{109,110} This can lead to both, short- and long-term side effects with potentially severe impact on our patients health. Typical short time effects include galactorrhea, gynecomastia, menstrual irregularities, and sexual dysfunction; a typical long-term result is osteoporosis.^{111,112} and a potentially increased risk in developing breast cancer in association with hyperprolactinemia.^{113,114} Our findings suggest that these risks may be particularly relevant for some patients but not other patients. For example, a previous study found that prolactin level elevations are more pronounced and more frequent in women than in men.¹¹⁵ In addition, some antipsychotics such as amisulprid, risperidone, and paliperidone are linked to a greater elevation of prolactin.^{33,115} In summary, and in line with the weight gain findings, this suggests that there is a potential to improve long-term health and antipsychotic adherence by identifying the subgroups or individual patients that are particularly likely to develop prolactin elevations under antipsychotic treatment.

QTc prolongation

Prolongation of QTc is another important antipsychotic side effect as cardiovascular diseases remain the most common cause of natural mortality in schizophrenia spectrum disorders.¹¹⁶ Users of antipsychotic medication are reported to have higher rates of sudden cardiac death than nonusers.¹¹⁷ Prolongation of QTc (longer than 450 ms in men and longer than 470 ms in women, respectively, when corrected with Bazetts Formula¹¹⁸) can contribute to this.³⁴ A prolongation of QTc can lead to torsade de pointes and subsequently to sudden death.^{119,120} The molecular pathway of this side effect is not completely understood.¹²¹ It is known, however, that some medications such as sertindole, amisulprid, ziprasidone lead to more QTc prolongation than others.³³ Our findings suggest that although QTc prolongation varies between subgroups or patients this increased variability is not statistically significant, potentially because of a smaller number of studies available which decreased the statistical

power. Previous studies suggest that risk factors may include female gender, comorbid cardiovascular disease, high drug dosages, and electrolyte disturbances.¹²²

Limitations and strengths

Our meta-analysis had some limitations. First, the occurrence of side effects might be a dosage dependent effect, which could reflect a higher/different VR in some studies. Second, prolactin levels may be influenced by factors such as stress, time of day or laboratory methods. Variability of prolactin might additionally be influenced by the percentage of female patients included in the respective trial. Third, for QTc, a reduced number of studies was available, potentially reducing statistical power to detect a significant variability increase. Finally, our method cannot determine whether the increased variability is due to variability differences in subgroups or individual patients.¹⁰ The particular strength of our study is that we included all available studies reporting variability measures for side effects. To our knowledge, this is the first comprehensive study that provides evidence for substantial variability in side effects.

Conclusion

Our findings suggest that there is enough variability in two major side effects (weight gain and prolactin elevation) to assume that subgroups of patients or even individual patients may benefit from improved treatment allocation through stratified or personalized medicine, respectively. Such efforts in precision medicine might be crucial to improve adherence¹²³ and long-term health under antipsychotic treatment.

Acknowledgements

The authors thank Majnu John, PhD, Department of Mathematics, Zucker School of Medicine at Northwell/Hofstra, for advice on the analysis of the current study for helpful comments on the manuscript. These individuals received no additional compensation, outside of their usual salary, for their contributions.

Funding/Support

PH is supported by a NARSAD grant from the Brain & Behavior Research Foundation (28445) and by a Research Grant from the Novartis Foundation (20A058).

Conflict of interest

In the last 3 years Dr. Leucht has received honoraria for service as a consultant or adviser and/or for lectures from Angelini, Böhringer Ingelheim, Geodon&Richter, Janssen, Johnson&Johnson, Lundbeck, LTS Lohmann, MSD, Otsuka, Recordati, SanofiAventis, Sandoz, Sunovion, TEVA. Dr. Kane

reported grants from Otsuka, Lundbeck and Janssen, as well as other from Alkermes, Allergan, Forum, Genentech, Lundbeck, Intracellular Therapies, Janssen, Johnson & Johnson, Merck, Neurocrine, Otsuka, Pierre Fabre, Reviva, Roche, Sunovion, Takeda, Teva, Vanguard Research Group, and LB Pharmaceuticals outside of the submitted work. No other disclosures were reported.

References

1. Lambert, M. *et al.* Impact of present and past antipsychotic side effects on attitude toward typical antipsychotic treatment and adherence. *European Psychiatry* **19**, 415–422 (2004).
2. Kane, J. M., Kishimoto, T. & Correll, C. U. Non-adherence to medication in patients with psychotic disorders: Epidemiology, contributing factors and management strategies. *World Psychiatry* **12**, 216–226 (2013).
3. Sendt, K.-V., Tracy, D. K. & Bhattacharyya, S. A systematic review of factors influencing adherence to antipsychotic medication in schizophrenia-spectrum disorders. *Psychiatry Research* **225**, 14–30 (2015).
4. Wade, M., Tai, S., Awenat, Y. & Haddock, G. A systematic review of service-user reasons for adherence and non-adherence to neuroleptic medication in psychosis. *Clinical Psychology Review* **51**, 75–95 (2017).
5. Homan, P. *et al.* Striatal volume and functional connectivity correlate with weight gain in early-phase psychosis. *Neuropsychopharmacology* (2019).
6. Winkelbeiner, S., Leucht, S., Kane, J. M. & Homan, P. Evaluation of Differences in Individual Treatment Response in Schizophrenia Spectrum Disorders: A Meta-analysis. *JAMA Psychiatry* (2019) doi:10.1001/jamapsychiatry.2019.1530.
7. Munkholm, K., Winkelbeiner, S. & Homan, P. Individual response to antidepressants for depression in adults - a simulation study and meta-analysis. *PsyArXiv* (2019) doi:10.31219/osf.io/srzx5.
8. Senn, S. Mastering variation: Variance components and personalised medicine. *Statistics in Medicine* **35**, 966–977 (2016).
9. Senn, S. Statistical pitfalls of personalized medicine. *Nature* **563**, 619–621 (2018).
10. Cortés, J. *et al.* Does evidence support the high expectations placed in precision medicine? A bibliographic review. *F1000 Research* **7**, (2019).
11. Nakagawa, S. *et al.* Meta-analysis of variation: Ecological and evolutionary applications and beyond. *Methods in Ecology and Evolution* **6**, 143–152 (2015).
12. Mills, H. L. *et al.* Detecting heterogeneity of intervention effects using analysis and meta-analysis of differences in variance between arms of a trial. *MedRxiv* (2020) doi:10.1101/2020.03.07.20032516.
13. Plöderl, M. & Hengartner, M. P. What are the chances for personalised treatment with antidepressants? Detection of patient-by-treatment interaction with a variance ratio meta-analysis. *BMJ Open* **9**, (2019).
14. Volkmann, C. M. D., Volkmann, A. & Mueller, C. On the treatment effect heterogeneity of antidepressants in major depression. a bayesian meta-analysis. *MedRxiv* (2020).
15. Winkelbeiner, S. *et al.* Treatment effect variation in brain stimulation across psychiatric disorders. *MedRxiv* (2020) doi:10.1101/2020.05.02.20088831.
16. Volkmann, A. On the relationship between treatment effect heterogeneity and the variability ratio effect size statistic. *arXiv* (2020).
17. Winkelbeiner, S. & Homan, P. Is variance ratio a valid indicator of heterogeneous treatment effect?-reply. *JAMA Psychiatry* (2019) doi:10.1001/jamapsychiatry.2019.3382.
18. Homan, P. *et al.* Structural similarity networks predict clinical outcome in early-phase psychosis. *Neuropsychopharmacology* **44**, 915–922 (2019).
19. Pillinger, T. *et al.* Comparative effects of 18 antipsychotics on metabolic function in patients with schizophrenia, predictors of metabolic dysregulation, and association with psychopathology: A systematic review and network meta-analysis. *The Lancet Psychiatry* **7**, 64–77 (2020).
20. Kenchiah, S. *et al.* Obesity and the risk of heart failure. *New England Journal of Medicine* **347**, 305–313 (2002).
21. Willett, W. C. *et al.* Weight, weight change, and coronary heart disease in women. Risk within the 'normal' weight range. *JAMA* **273**, 461–465 (1995).
22. Cooper, S. J. *et al.* BAP guidelines on the management of weight gain, metabolic disturbances and cardiovascular risk associated with psychosis and antipsychotic drug treatment. *Journal of Psychopharmacology* **30**, 717–748 (2016).
23. Mustafa, S. *et al.* Predictors of 'all-cause discontinuation' of initial oral antipsychotic medication in first episode psychosis. *Schizophrenia Research* **201**, 287–293 (2018).
24. Thapa, S. & Bhusal, K. Hyperprolactinemia. in *StatPearls* (StatPearls Publishing, 2020).
25. Montejo, Á. L. *et al.* Frequency of sexual dysfunction in patients with a psychotic disorder receiving antipsychotics. *Journal of Sexual Medicine* **7**, 3404–3413 (2010).
26. Serretti, A. & Chiesa, A. A meta-analysis of sexual dysfunction in psychiatric patients taking antipsychotics. *International Clinical Psychopharmacology* **26**, 130–140 (2011).
27. Heald, A. Physical health in schizophrenia: A challenge for antipsychotic therapy. *European Psychiatry* **25**, S6–S11 (2010).
28. Homan, P., Kindler, J., Hauf, M., Hubl, D. & Dierks, T. Cerebral blood flow identifies responders to transcranial magnetic stimulation in auditory verbal hallucinations. *Translational Psychiatry* **2**, e189 (2012).
29. Cavelti, M. *et al.* Neuroimaging of formal thought disorder in schizophrenia: A systematic review. *Schizophrenia Research* **2–16** (2018).
30. Cavelti, M. *et al.* Formal thought disorder is related

- to aberrations in language-related white matter tracts in patients with schizophrenia. *Psychiatry Research: Neuroimaging* 40–50 (2018).
31. Winkelbeiner, S. *et al.* Decreased blood flow in the right insula and middle temporal gyrus predicts negative formal thought disorder in schizophrenia. *Schizophrenia Research* 201, 432–434 (2018).
 32. Cavelti, M., Homan, P. & Vauth, R. The impact of thought disorder on therapeutic alliance and personal recovery in schizophrenia and schizoaffective disorder: An exploratory study. *Psychiatry Research* 239, 92–98 (2016).
 33. Huhn, M. *et al.* Comparative efficacy and tolerability of 32 oral antipsychotics for the acute treatment of adults with multi-episode schizophrenia: A systematic review and network meta-analysis. *The Lancet* 394, 939–951 (2019).
 34. Funk, M. C. *et al.* QTc prolongation and psychotropic medications. *The American Journal of Psychiatry* 177, 273–274 (2020).
 35. Glassman, A. H. Schizophrenia, antipsychotic drugs, and cardiovascular disease. *Journal of Clinical Psychiatry* 66, 5–10 (2005).
 36. Vandael, E., Vandenberg, B., Vandenberghe, J., Willems, R. & Foulon, V. Risk factors for qtc-prolongation: Systematic review of the evidence. *International Journal of Clinical Pharmacy* 39, 16–25 (2017).
 37. Koponen, H. *et al.* Schizophrenia and sudden cardiac death—a review. *Nordic Journal of Psychiatry* 62, 342–345 (2008).
 38. Hutton, B. *et al.* The PRISMA extension statement for reporting of systematic reviews incorporating network meta-analyses of health care interventions: Checklist and explanations. *Annals of Internal Medicine* 162, 777–784 (2015).
 39. Viechtbauer, W. Conducting meta-analyses in R with the metafor package. *Stat Software* 36, 1–48 (2010).
 40. Litman, R. E. *et al.* AZD8529, a positive allosteric modulator at the mGluR2 receptor, does not improve symptoms in schizophrenia: A proof of principle study. *Schizophrenia Research* 172, 152–157 (2016).
 41. Garcia, E. *et al.* The efficacy and safety of blonanserin compared with haloperidol in acute-phase schizophrenia. *CNS Drugs* 23, 615–625 (2009).
 42. Clark, M. L., Huber, W. K., Sullivan, J., Wood, F. & Costiloe, J. P. Evaluation of loxapine succinate in chronic schizophrenia. *Diseases of the Nervous System* 33, 783–791 (1972).
 43. Kahn, R. S. *et al.* Efficacy and tolerability of once-daily extended release quetiapine fumarate in acute schizophrenia: A randomized, double-blind, placebo-controlled study. *Journal of Clinical Psychiatry* 68, 832–842 (2007).
 44. Ogasa, M., Kimura, T., Nakamura, M. & Guarino, J. Lurasidone in the treatment of schizophrenia: A 6-week, placebo-controlled study. *Psychopharmacology* 225, 519–530 (2013).
 45. Davidson, M. *et al.* Efficacy, safety and early response of paliperidone extended-release tablets (paliperidone ER): Results of a 6-week, randomized, placebo-controlled study. *Schizophrenia Research* 93, 117–130 (2007).
 46. Durgam, S. *et al.* Cariprazine in the treatment of schizophrenia: A proof-of-concept trial. *International Clinical Psychopharmacology* 31, 61–68 (2016).
 47. Coppola, D. *et al.* Efficacy and Safety of Paliperidone Extended Release 1.5 mg/day-A Double-blind, Placebo-and Active-Controlled, Study in the Treatment of Patients with Schizophrenia. *Psychopharmacology Bulletin* 44, 54–72 (2011).
 48. Landbloom, R. *et al.* Asenapine for the treatment of adults with an acute exacerbation of schizophrenia: Results from a randomized, double-blind, fixed-dose, placebo-controlled trial with olanzapine as an active control. *CNS Spectrums* 22, 333–341 (2017).
 49. Kinon, B. J. *et al.* A multicenter, inpatient, phase 2, double-blind, placebo-controlled dose-ranging study of LY2140023 monohydrate in patients with DSM-IV schizophrenia. *Journal of Clinical Psychopharmacology* 31, 349–355 (2011).
 50. Kammen, D. P. van, McEvoy, J. P., Targum, S. D., Kardatzke, D. & Seabee, T. B. A randomized, controlled, dose-ranging trial of sertindole in patients with schizophrenia. *Psychopharmacology* 124, 168–175 (1996).
 51. Arvanitis, L. A. & Miller, B. G. Multiple fixed doses of ‘seroquel’ (quetiapine) in patients with acute exacerbation of schizophrenia: A comparison with haloperidol and placebo. *Biological Psychiatry* 42, 233–246 (1997).
 52. Ishigooka, J., Iwashita, S. & Tadori, Y. Efficacy and safety of brexpiprazole for the treatment of acute schizophrenia in japan: A 6-week, randomized, double-blind, placebo-controlled study. *Psychiatry and Clinical Neurosciences* 72, 692–700 (2018).
 53. Correll, C. U. *et al.* Efficacy and safety of brexpiprazole for the treatment of acute schizophrenia: A 6-week randomized, double-blind, placebo-controlled trial. *The American Journal of Psychiatry* 172, 870–880 (2015).
 54. Zborowski, J. *et al.* Efficacy and safety of sertindole in a trial of schizophrenic patients. *Biological Psychiatry* 9, 661–662 (1995).
 55. Potkin, S. G., Litman, R. E., Torres, R. & Wolfgang, C. D. Efficacy of iloperidone in the treatment of schizophrenia: Initial phase 3 studies. *Journal of Clinical Psychopharmacology* 28, S4–11 (2008).
 56. Nakamura, M. *et al.* Lurasidone in the treatment of acute schizophrenia: A double-blind, placebo-controlled trial. *Journal of Clinical Psychiatry* 70, 829–836 (2009).
 57. Potkin, S. G., Cohen, M. & Panagides, J. Efficacy and tolerability of asenapine in acute schizophrenia: A placebo-and risperidone-controlled trial. *Journal of Clinical Psychiatry* 68, 1492–1500 (2007).
 58. Keck Jr, P. *et al.* Ziprasidone 40 and 120 mg/day in the acute exacerbation of schizophrenia and schizoaffective disorder: A 4-week placebo-controlled trial. *Psychopharmacology*

- 140, 173–184 (1998).
59. Cutler, A. J. *et al.* A failed 6-week, randomized, double-blind, placebo-controlled study of once-daily extended release quetiapine fumarate in patients with acute schizophrenia: Lessons learned. *Psychopharmacology Bulletin* **43**, 37–69 (2010).
60. Clark, M. L., Huber, W. K., Sakata, K., Fowles, D. C. & Serafetinides, E. A. Molindone in chronic schizophrenia. *Clinical Pharmacology & Therapeutics* **11**, 680–688 (1970).
61. Borison, R. L., Arvanitis, L. A. & Milier, B. G. ICI 204,636, an atypical antipsychotic: Efficacy and safety in a multicenter, placebo-controlled trial in patients with schizophrenia. *Journal of Clinical Psychopharmacology* **16**, 158–169 (1996).
62. Ahmed, S. *et al.* Lipid profile among patients with schizophrenia randomized to bifeprunox, placebo, or olanzapine: A comparison of results. *Schizophrenia Bulletin* **33**, 417–417 (2007).
63. Durgam, S. *et al.* Cariprazine in acute exacerbation of schizophrenia: A fixed-dose, phase 3, randomized, double-blind, placebo-and active-controlled trial. *Journal of Clinical Psychiatry* **76**, e1574–82 (2015).
64. Meltzer, H., Barbato, L., Heisterberg, J., Yeung, P. & Shapira, N. A randomized, double-blind, placebo-controlled efficacy and safety study of bifeprunox as treatment for patients with acutely exacerbated schizophrenia. *Schizophrenia Bulletin* **33**, 446–446 (2007).
65. Meltzer, H. Y., Arvanitis, L., Bauer, D., Rein, W. & Group, M.-T. S. Placebo-controlled evaluation of four novel compounds for the treatment of schizophrenia and schizoaffective disorder. *The American Journal of Psychiatry* **161**, 975–984 (2004).
66. Kane, J. M., Cohen, M., Zhao, J., Alphs, L. & Panagides, J. Efficacy and safety of asenapine in a placebo-and haloperidol-controlled trial in patients with acute exacerbation of schizophrenia. *Journal of Clinical Psychopharmacology* **30**, 106–115 (2010).
67. Kane, J. M. *et al.* Efficacy and safety of aripiprazole and haloperidol versus placebo in patients with schizophrenia and schizoaffective disorder. *The Journal of Clinical Psychiatry* **63**, 763–771 (2002).
68. Hirayasu, Y., Tomioka, M., Iizumi, M. & Kikuchi, H. A double-blind, placebo-controlled, comparative study of paliperidone extended release (er) tablets in patients with schizophrenia. *Japanese Journal of Psychopharmacology* **13**, 2077–2103 (2010).
69. Daniel, D. G. *et al.* Ziprasidone 80 mg/day and 160 mg/day in the acute exacerbation of schizophrenia and schizoaffective disorder: A 6-week placebo-controlled trial. *Neuropsychopharmacology* **20**, 491–505 (1999).
70. Cooper, S., Tweed, J., Raniwalla, J., Butler, A. & Welch, C. A placebo-controlled comparison of zotepine versus chlorpromazine in patients with acute exacerbation of schizophrenia. *Acta Psychiatrica Scandinavica* **101**, 218–225 (2000).
71. Casey, D. E., Sands, E. E., Heisterberg, J. & Yang, H.-M. Efficacy and safety of bifeprunox in patients with an acute exacerbation of schizophrenia: Results from a randomized, double-blind, placebo-controlled, multicenter, dose-finding study. *Psychopharmacology* **200**, 317–331 (2008).
72. Bugarski-Kirola, D., Wang, A., Abi-Saab, D. & Blätler, T. A phase ii/iii trial of bitopertin monotherapy compared with placebo in patients with an acute exacerbation of schizophrenia—results from the candlelyte study. *European Neuropsychopharmacology* **24**, 1024–1036 (2014).
73. Patil, S. T. *et al.* Activation of mGlu2/3 receptors as a new approach to treat schizophrenia: A randomized Phase 2 clinical trial. *Nature Medicine* **13**, 1102–1107 (2007).
74. Lieberman, J. A. *et al.* ITI-007 for the Treatment of Schizophrenia: A 4-Week Randomized, Double-Blind, Controlled Trial. *Biological Psychiatry* (2015) doi:10.1016/j.biopsych.2015.08.026.
75. Potkin, S. G. *et al.* Aripiprazole, an antipsychotic with a novel mechanism of action, and risperidone vs placebo in patients with schizophrenia and schizoaffective disorder. *Archives of General Psychiatry* **60**, 681–690 (2003).
76. Durgam, S. *et al.* An evaluation of the safety and efficacy of cariprazine in patients with acute exacerbation of schizophrenia: A phase II, randomized clinical trial. *Schizophrenia Research* **152**, 450–457 (2014).
77. Nasrallah, H. A. *et al.* Lurasidone for the treatment of acutely psychotic patients with schizophrenia: A 6-week, randomized, placebo-controlled study. *Journal of Psychiatric Research* **47**, 670–677 (2013).
78. Marder, S. R. *et al.* Efficacy and safety of paliperidone extended-release tablets: Results of a 6-week, randomized, placebo-controlled study. *Biological Psychiatry* **62**, 1363–1370 (2007).
79. Borison, R. L., Pathiraja, A. P., Diamond, B. I. & Meibach, R. C. Risperidone: Clinical safety and efficacy in schizophrenia. *Psychopharmacology Bulletin* (1992).
80. Shen, J. H. Q. *et al.* A 6-week randomized, double-blind, placebo-controlled, comparator referenced trial of vabicaserin in acute schizophrenia. *Journal of Psychiatric Research* **53**, 14–22 (2014).
81. Kinoshita, T., Bai, Y.-M., Kim, J.-H., Miyake, M. & Oshima, N. Efficacy and safety of asenapine in Asian patients with an acute exacerbation of schizophrenia: A multicentre, randomized, double-blind, 6-week, placebo-controlled study. *Psychopharmacology* **233**, 2663–2674 (2016).
82. McEvoy, J. P., Daniel, D. G., Carson, W. H., McQuade, R. D. & Marcus, R. N. A randomized, double-blind, placebo-controlled, study of the efficacy and safety of aripiprazole 10, 15 or 20 mg/day for the treatment of patients with acute exacerbations of schizophrenia. *Journal of Psychiatric Research* **41**, 895–905 (2007).
83. Kane, J. *et al.* Treatment of schizophrenia with paliperi-

- done extended-release tablets: A 6-week placebo-controlled trial. *Schizophrenia Research* **90**, 147–161 (2007).
84. Harvey, P. D., Loebel, A., Cucchiaro, J., Phillips, D. & Siu, C. Is quality of life related to cognitive performance or negative symptoms in patients with schizophrenia? Results from a double-blind, active-controlled, lurasidone extension study. *Neuropsychopharmacology* **38**, S515–S515 (2013).
85. Meltzer, H. Y. *et al.* Lurasidone in the treatment of schizophrenia: A randomized, double-blind, placebo- and olanzapine-controlled study. *American Journal of Psychiatry* **168**, 957–967 (2011).
86. Beasley, C. M. *et al.* Olanzapine versus placebo: Results of a double-blind, fixed-dose olanzapine trial. *Psychopharmacology* **124**, 159–167 (1996).
87. Canuso, C. M. *et al.* A randomized, double-blind, placebo-controlled study of 2 dose ranges of paliperidone extended-release in the treatment of subjects with schizoaffective disorder. *Journal of Clinical Psychiatry* **71**, 587–598 (2010).
88. Beasley, C. M. *et al.* Olanzapine versus placebo and haloperidol: Acute phase results of the North American double-blind olanzapine trial. *Neuropsychopharmacology* **14**, 111–123 (1996).
89. Loebel, A. *et al.* Lurasidone Dose Escalation in Early Nonresponding Patients With Schizophrenia: A Randomized, Placebo-Controlled Study. *Journal of Clinical Psychiatry* **77**, 1672–1680 (2016).
90. Litman, R. E. *et al.* The selective neurokinin 3 antagonist AZD2624 does not improve symptoms or cognition in schizophrenia: A proof-of-principle study. *Journal of Clinical Psychopharmacology* **34**, 199–204 (2014).
91. Kane, J. M. *et al.* Overview of short- and long-term tolerability and safety of brexpiprazole in patients with schizophrenia. *Schizophrenia Research* **174**, 93–98 (2016).
92. Lindenmayer, J.-P., Brown, D., Liu, S., Brecher, M. & Meulien, D. The efficacy and tolerability of once-daily extended release quetiapine fumarate in hospitalized patients with acute schizophrenia: A 6-week randomized, double-blind, placebo-controlled study. *Psychopharmacology Bulletin* **41**, 11–35 (2008).
93. Kane, J. M. *et al.* A multicenter, randomized, double-blind, controlled phase 3 trial of fixed-dose brexpiprazole for the treatment of adults with acute schizophrenia. *Schizophrenia Research* **164**, 127–135 (2015).
94. Small, J. G., Hirsch, S. R., Arvanitis, L. A., Miller, B. G. & Link, C. G. Quetiapine in patients with schizophrenia: A high-and low-dose double-blind comparison with placebo. *Archives of General Psychiatry* **54**, 549–557 (1997).
95. Schmidt, M. E. *et al.* A double-blind, randomized, placebo-controlled study with jnj-37822681, a novel, highly selective, fast dissociating d2 receptor antagonist in the treatment of acute exacerbation of schizophrenia. *European Neuropsychopharmacology* **22**, 721–733 (2012).
96. Geffen, Y., Keefe, R., Rabinowitz, J., Anand, R. & Davidson, M. BI-1020, a new γ -aminobutyric acid-enhanced antipsychotic: Results of 6-week, randomized, double-blind, controlled, efficacy and safety study. *Journal of Clinical Psychiatry* **73**, e1168–74 (2012).
97. Canuso, C. M. *et al.* Paliperidone extended-release in schizoaffective disorder: A randomized, controlled study comparing a flexible dose with placebo in patients treated with and without antidepressants and/or mood stabilizers. *Journal of Clinical Psychopharmacology* **30**, 487–495 (2010).
98. Zimbardo, D. L. *et al.* Controlled, dose-response study of sertindole and haloperidol in the treatment of schizophrenia. *The American Journal of Psychiatry* **154**, 782–791 (1997).
99. Potkin, S. G., Kimura, T. & Guarino, J. A 6-week, double-blind, placebo- and haloperidol-controlled, phase II study of lurasidone in patients with acute schizophrenia. *Therapeutic Advances in Psychopharmacology* **5**, 322–331 (2015).
100. Homan, P. & Kane, J. M. Clozapine as an early-stage treatment. *Acta Psychiatrica Scandinavica* **138**, 279–280 (2018).
101. Winton-Brown, T. T. *et al.* Five-fold increased risk of relapse following breaks in antipsychotic treatment of first episode psychosis. *Schizophrenia Research* **179**, 50–56 (2017).
102. Leucht, S. *et al.* Maintenance treatment with antipsychotic drugs for schizophrenia. *Cochrane Database of Systematic Reviews* (2012) doi:10.1002/14651858.CD008016.pub2.
103. Osborn, D. P. *et al.* Weight change over two years in people prescribed olanzapine, quetiapine and risperidone in UK primary care: Cohort study in THIN, a UK primary care database. *The Journal of Psychopharmacology* **32**, 1098–1103 (2018).
104. Gebhardt, S. *et al.* Antipsychotic-induced body weight gain: Predictors and a systematic categorization of the long-term weight course. *Journal of Psychiatric Research* **43**, 620–626 (2009).
105. Najar, H., Joas, E., Kardell, M., Pålsson, E. & Landén, M. Weight gain with add-on second-generation antipsychotics in bipolar disorder: A naturalistic study. *Acta Psychiatrica Scandinavica* **135**, 606–611 (2017).
106. Homan, P. *et al.* Relapse prevention through health technology program reduces hospitalization in schizophrenia. *bioRxiv* (2019).
107. Nielsen, M., Rostrup, E., Wulff, S., Glenthøj, B. & Ebdrup, B. H. Striatal reward activity and antipsychotic-associated weight change in patients with schizophrenia undergoing initial treatment. *JAMA Psychiatry* **73**, 121–128 (2016).
108. Inder, W. J. & Castle, D. Antipsychotic-Induced Hyperprolactinaemia: *Australian and New Zealand Journal of Psychiatry* (2011).
109. Ben-Jonathan, N. & Hnasko, R. Dopamine as a prolactin (PRL) inhibitor. *Endocrine Reviews* **22**, 724–763 (2001).
110. Bushe, C. J., Bradley, A. & Pendlebury, J. A review of hyperprolactinaemia and severe mental illness: Are there implications for clinical biochemistry? *Annals of Clinical*

- Biochemistry* **47**, 292–300 (2010).
111. Mazziotti, G., Frara, S. & Giustina, A. Pituitary Diseases and Bone. *Endocrine Reviews* **39**, 440–488 (2018).
 112. Byerly, M., Suppes, T., Tran, Q.-V. & Baker, R. A. Clinical Implications of Antipsychotic-Induced Hyperprolactinemia in Patients With Schizophrenia Spectrum or Bipolar Spectrum Disorders: Recent Developments and Current Perspectives. *Journal of Clinical Psychopharmacology* **27**, 639–661 (2007).
 113. Johnston, A. N. *et al.* Hyperprolactinemia-inducing antipsychotics increase breast cancer risk by activating JAK-STAT5 in precancerous lesions. *Breast Cancer Research* **20**, 42 (2018).
 114. George, A. *et al.* Psychotropic Medication Use and Postmenopausal Breast Cancer Risk. *Cancer Epidemiology, Biomarkers & Prevention* **29**, 254–256 (2020).
 115. Veselinović, T. *et al.* Impact of different antidopaminergic mechanisms on the dopaminergic control of prolactin secretion. *Journal of Clinical Psychopharmacology* **31**, 214–220 (2011).
 116. Riordan, H. J., Antonini, P. & Murphy, M. F. Atypical Antipsychotics and Metabolic Syndrome in Patients with Schizophrenia: Risk Factors, Monitoring, and Healthcare Implications. *American Health & Drug Benefits* **4**, 292–302 (2011).
 117. Ray, W. A., Chung, C. P., Murray, K. T., Hall, K. & Stein, C. M. Atypical Antipsychotic Drugs and the Risk of Sudden Cardiac Death. *New England Journal of Medicine* (2009) doi:10.1056/NEJMoa0806994.
 118. Bazett, H. C. An Analysis of the Time-Relations of Electrocardiograms. *Annals of Noninvasive Electrocardiology* **2**, 177–194 (1997).
 119. Glassman, A. H. & Bigger, J. T. Antipsychotic Drugs: Prolonged QTc Interval, Torsade de Pointes, and Sudden Death. *The American Journal of Psychiatry* **158**, 1774–1782 (2001).
 120. Nielsen, J. *et al.* Assessing QT Interval Prolongation and its Associated Risks with Antipsychotics. *CNS Drugs* **25**, 473–490 (2011).
 121. Spellmann, I. *et al.* QTc prolongation in short-term treatment of schizophrenia patients: Effects of different antipsychotics and genetic factors. *European Archives of Psychiatry and Clinical Neuroscience* **268**, 383–390 (2018).
 122. Lindström, E., Farde, L., Eberhard, J. & Haverkamp, W. QTc interval prolongation and antipsychotic drug treatments: Focus on sertindole. *International Journal of Neuropsychopharmacology* **8**, 615–629 (2005).
 123. Zullig, L. L. *et al.* The new landscape of medication adherence improvement: Where population health science meets precision medicine. *Patient Preference and Adherence* (2018) doi:10.2147/PPA.S165404.
 124. Kane, J. M. *et al.* Efficacy and safety of cariprazine in acute exacerbation of schizophrenia: Results from an international, phase iii clinical trial. *Journal of Clinical Psychopharmacology* **35**, 367–373 (2015).
 125. Center for Drug Evaluation and Research. A multicenter, randomized, double-blind, fixed-dose, 6-week trial of the efficacy and safety of asenapine compared with placebo using olanzapine postive control in subjects with an acute exacerbation of schizophrenia. *Medical Reviews* 22–117 (2009).
 126. Center for Drug Evaluation and Research. A multicenter, randomized, double-blind, flexible-dose, 6-week trial of the efficacy and safety of asenapine compared with placebo using olanzapine postive control in subjects with an acute exacerbation of schizophrenia. *Medical Reviews* 23–117 (2009).
 127. Center for Drug Evaluation and Research. Study 9420 2002. *Medical Reviews* **S9**, 21–436 (2002).
 128. Center for Drug Evaluation and Research. Study 115 2000. *Medical Reviews* **S1**, 20–825 (2000).

Supplementary Information

Supplementary Tables

Table S1

All study arms with references

Study Arm	Year	Sample Size	Drug	Weight	Prolactin	QTc
Ishigooka 2018 ⁵²	2018	116	Placebo	Yes	Yes	No
Ishigooka 2018 ⁵²	2018	228	Brexpiprazole	Yes	Yes	No
Litman 2016 ⁴⁰	2016	55	Placebo	Yes	Yes	No
Litman 2016 ⁴⁰	2016	31	Risperidone	Yes	Yes	No
NCT01104766a ⁶³	2015	153	Placebo	Yes	Yes	No
NCT01104766a ⁶³	2015	152	Aripiprazole	Yes	Yes	No
NCT01104766b ⁶³	2015	312	Cariprazine	Yes	Yes	No
Lieberman 2015 ⁷⁴	2015	85	Placebo	Yes	Yes	No
Lieberman 2015 ⁷⁴	2015	82	Risperidone	Yes	Yes	No
Kane 2015 ¹²⁴	2015	184	Placebo	Yes	Yes	Yes
Kane 2015 ¹²⁴	2015	370	Brexpiprazole	Yes	Yes	Yes
Correll 2015 ⁵³	2015	184	Placebo	Yes	Yes	Yes
Correll 2015 ⁵³	2015	362	Brexpiprazole	Yes	Yes	Yes
NCT01098110 ⁸¹	2015	174	Placebo	Yes	Yes	No
NCT01098110 ⁸¹	2015	358	Asenapine	Yes	Yes	No
NCT01617187a ⁴⁸	2015	113	Asenapine	Yes	No	No
NCT01617187a ⁴⁸	2015	103	Placebo	Yes	No	No
NCT01617187b ⁴⁸	2015	46	Olanzapine	Yes	No	No
NCT00905307a ⁹¹	2015	50	Aripiprazole	Yes	Yes	No
NCT00905307a ⁹¹	2015	95	Placebo	Yes	Yes	No
NCT00905307b ⁹¹	2015	90	Brexpiprazole	Yes	Yes	No
Loebel 2015a ⁸⁹	2015	199	Lurasidone	Yes	Yes	No
Loebel 2015a ⁸⁹	2015	112	Placebo	Yes	Yes	No
Litmann 2014 ⁹⁰	2014	41	Placebo	Yes	No	No
Litmann 2014 ⁹⁰	2014	22	Olanzapine	Yes	No	No
Schmidt 2014 ⁹⁵	2014	93	Olanzapine	Yes	Yes	No
Shen 2014 ⁸⁰	2014	78	Placebo	Yes	No	No
Shen 2014 ⁸⁰	2014	77	Olanzapine	Yes	No	No
Durgam 2014a ⁷⁶	2014	151	Placebo	Yes	Yes	Yes
Durgam 2014a ⁷⁶	2014	140	Risperidone	Yes	Yes	Yes
Durgam 2014b ⁷⁶	2014	438	Cariprazine	Yes	Yes	Yes
Geffen 2012 ⁹⁶	2012	91	Risperidone	No	Yes	No
Geffen 2012 ⁹⁶	2012	93	Placebo	No	Yes	No
Kinon 2011 ⁴⁹	2011	62	Olanzapine	Yes	Yes	No
Kinon 2011 ⁴⁹	2011	122	Placebo	Yes	Yes	No
Kane 2010a ⁶⁶	2010	115	Haloperidol	Yes	Yes	No
Kane 2010a ⁶⁶	2010	123	Placebo	Yes	Yes	No
Kane 2010b ⁶⁶	2010	220	Asenapine	Yes	Yes	No
Study 006 ⁴⁴	2010	99	Lurasidone	Yes	Yes	Yes
Study 006 ⁴⁴	2010	50	Placebo	Yes	Yes	Yes
Study 049a ⁹⁹	2010	73	Haloperidol	Yes	Yes	Yes
Study 049a ⁹⁹	2010	72	Placebo	Yes	Yes	Yes
Study 049b ⁹⁹	2010	140	Lurasidone	Yes	Yes	Yes
Study 196 ⁵⁶	2010	90	Placebo	Yes	Yes	Yes
Study 196 ⁵⁶	2010	90	Lurasidone	Yes	Yes	Yes
Study 229 ⁷⁷	2010	372	Lurasidone	Yes	Yes	Yes

VARIATION IN SIDE EFFECTS

13

Study Arm	Year	Sample Size	Drug	Weight	Prolactin	QTc
Study 229 ⁷⁷	2010	128	Placebo	Yes	Yes	Yes
Study 231a ⁸⁵	2010	116	Placebo	Yes	Yes	Yes
Study 231a ⁸⁵	2010	123	Olanzapine	Yes	Yes	Yes
Study 231b ⁸⁵	2010	239	Lurasidone	Yes	Yes	Yes
Study 233a ⁸⁴	2010	122	Placebo	Yes	Yes	Yes
Study 233a ⁸⁴	2010	120	Quetiapine	Yes	Yes	Yes
Study 233b ⁸⁴	2010	246	Lurasidone	Yes	Yes	Yes
Garcia 2009 ⁴¹	2009	60	Haloperidol	Yes	Yes	Yes
Garcia 2009 ⁴¹	2009	64	Placebo	Yes	Yes	Yes
Hera 041-021a ¹²⁵	2009	208	Asenapine	No	Yes	No
Hera 041-021a ¹²⁵	2009	106	Placebo	No	Yes	No
Hera 041-021b ¹²⁵	2009	103	Olanzapine	No	Yes	No
Hera 041-022 ¹²⁶	2009	93	Olanzapine	No	Yes	No
Hera 041-022 ¹²⁶	2009	93	Placebo	No	Yes	No
Casey 2008 ⁷¹	2008	120	Risperidone	Yes	Yes	No
Casey 2008 ⁷¹	2008	119	Placebo	Yes	Yes	No
Cutler 2008a ⁵⁹	2008	151	Ziprasidone	Yes	Yes	Yes
Cutler 2008a ⁵⁹	2008	152	Placebo	Yes	Yes	Yes
Cutler 2008b ⁵⁹	2008	303	Iloperidone	Yes	Yes	Yes
Johnson NCT00397033 ⁸⁷	2008	209	Paliperidone	Yes	Yes	No
Johnson NCT00397033 ⁸⁷	2008	107	Placebo	Yes	Yes	No
Johnson NCT00412373 ⁹⁷	2008	95	Placebo	Yes	Yes	No
Johnson NCT00412373 ⁹⁷	2008	216	Paliperidone	Yes	Yes	No
Johnson NCT00524043 ⁴⁷	2008	70	Paliperidone	Yes	Yes	No
Johnson NCT00524043 ⁴⁷	2008	65	Placebo	Yes	Yes	No
Lindenmayer 2008 ⁹²	2008	267	Quetiapine	Yes	Yes	Yes
Lindenmayer 2008 ⁹²	2008	84	Placebo	Yes	Yes	Yes
Study 3000a ⁵⁵	2008	127	Placebo	Yes	Yes	Yes
Study 3000a ⁵⁵	2008	124	Haloperidol	Yes	Yes	Yes
Study 3000b ⁵⁵	2008	124	Iloperidone	Yes	Yes	Yes
Study 3004a ⁵⁵	2008	156	Placebo	Yes	Yes	Yes
Study 3004a ⁵⁵	2008	154	Iloperidone	Yes	Yes	Yes
Study 3004b ⁵⁵	2008	153	Risperidone	Yes	Yes	Yes
Study 3005a ⁵⁵	2008	157	Risperidone	Yes	No	Yes
Study 3005a ⁵⁵	2008	160	Placebo	Yes	No	Yes
Study 3005b ⁵⁵	2008	389	Iloperidone	Yes	No	Yes
Study RGH-MD-03 ⁴⁶	2008	130	Placebo	Yes	Yes	No
Study RGH-MD-03 ⁴⁶	2008	128	Cariprazine	Yes	Yes	No
Cutler 2008a ⁵⁹	2008	117	Placebo	Yes	Yes	Yes
Cutler 2008a ⁵⁹	2008	448	Quetiapine	Yes	Yes	Yes
Davidson 2007a ⁴⁵	2007	123	Placebo	Yes	Yes	No
Davidson 2007a ⁴⁵	2007	128	Olanzapine	Yes	Yes	No
Davidson 2007b ⁴⁵	2007	125	Paliperidone	Yes	Yes	No
Kahn 2007 ⁴³	2007	118	Placebo	Yes	Yes	No
Kahn 2007 ⁴³	2007	470	Quetiapine	Yes	Yes	No
McEvoy 2007b ⁸²	2007	206	Aripiprazole	Yes	Yes	No
McEvoy 2007b ⁸²	2007	108	Placebo	Yes	Yes	No
Meltzer 2007a ⁶⁴	2007	149	Placebo	Yes	Yes	No
Meltzer 2007a ⁶⁴	2007	154	Risperidone	Yes	Yes	No
Kane 2007b ⁸³	2007	127	Placebo	Yes	Yes	No
Kane 2007b ⁸³	2007	128	Olanzapine	Yes	Yes	No
Kane 2007c ⁸³	2007	375	Paliperidone	Yes	Yes	No

Study Arm	Year	Sample Size	Drug	Weight	Prolactin	QTc
Marder 2007c ⁷⁸	2007	110	Placebo	Yes	Yes	Yes
Marder 2007c ⁷⁸	2007	224	Paliperidone	Yes	Yes	Yes
Marder 2007d ⁷⁸	2007	110	Olanzapine	Yes	Yes	Yes
Patil 2007 ⁷³	2007	34	Olanzapine	Yes	Yes	Yes
Patil 2007 ⁷³	2007	63	Placebo	Yes	Yes	Yes
Potkin 2007d ⁵⁷	2007	62	Placebo	Yes	Yes	Yes
Potkin 2007d ⁵⁷	2007	60	Risperidone	Yes	Yes	Yes
Potkin 2007c ⁵⁷	2007	60	Asenapine	Yes	Yes	Yes
Potkin 2003a ⁷⁵	2003	202	Aripiprazole	Yes	Yes	Yes
Potkin 2003a ⁷⁵	2003	103	Placebo	Yes	Yes	Yes
Potkin 2003b ⁷⁵	2003	99	Risperidone	Yes	Yes	Yes
Kane 2002b ⁶⁷	2002	104	Haloperidol	Yes	Yes	Yes
Study 94202 2002a ¹²⁷	2002	61	Aripiprazole	No	Yes	Yes
Study 94202 2002a ¹²⁷	2002	64	Placebo	No	Yes	Yes
Study 94202 2002b ¹²⁷	2002	63	Haloperidol	No	Yes	Yes
Study 115 2000a ¹²⁸	2000	83	Placebo	No	No	Yes
Study 115 2000a ¹²⁸	2000	164	Ziprasidone	No	No	Yes
Study 115 2000b ¹²⁸	2000	85	Haloperidol	No	No	Yes
Daniel 1999 ⁶⁹	1999	92	Placebo	Yes	No	Yes
Daniel 1999 ⁶⁹	1999	104	Ziprasidone	Yes	No	Yes
Arvanitis 1997a ⁵¹	1997	51	Placebo	Yes	Yes	Yes
Arvanitis 1997a ⁵¹	1997	105	Quetiapine	Yes	Yes	Yes
Arvanitis 1997b ⁵¹	1997	52	Haloperidol	Yes	Yes	Yes
Small 1997 ⁹⁴	1997	96	Quetiapine	No	Yes	No
Small 1997 ⁹⁴	1997	96	Placebo	No	Yes	No
Zimbroff 1997a ⁹⁸	1997	144	Sertindole	No	Yes	Yes
Zimbroff 1997a ⁹⁸	1997	73	Placebo	No	Yes	Yes
Zimbroff 1997b ⁹⁸	1997	137	Haloperidol	No	Yes	Yes
Beasley 1996a ⁸⁶	1996	50	Placebo	Yes	Yes	No
Beasley 1996a ⁸⁶	1996	50	Olanzapine	Yes	Yes	No
Beasley 1996b ⁸⁸	1996	69	Haloperidol	Yes	Yes	Yes
Beasley 1996b ⁸⁸	1996	68	Placebo	Yes	Yes	Yes
Beasley 1996c ⁸⁸	1996	133	Olanzapine	Yes	Yes	Yes
Borison 1996 ⁶¹	1996	55	Placebo	Yes	Yes	Yes
Borison 1996 ⁶¹	1996	54	Quetiapine	Yes	Yes	Yes
van Kammen 1996 ⁵⁰	1996	105	Sertindole	Yes	Yes	Yes
van Kammen 1996 ⁵⁰	1996	48	Placebo	Yes	Yes	Yes
Zborowski 1995a ⁵⁴	1995	116	Placebo	Yes	Yes	Yes
Zborowski 1995a ⁵⁴	1995	115	Haloperidol	Yes	Yes	Yes
Zborowski 1995b ⁵⁴	1995	117	Sertindole	Yes	Yes	Yes
Clark 1972a ⁴²	1972	19	Chlorpromazine	Yes	No	No
Clark 1972a ⁴²	1972	18	Placebo	Yes	No	No
Clark 1972b ⁴²	1972	18	Loxapine	Yes	No	No
Clark 1970a ⁶⁰	1970	15	Chlorpromazine	Yes	No	No
Clark 1970a ⁶⁰	1970	14	Placebo	Yes	No	No