

## Efficacy and tolerability of bevacizumab in patients with severe Covid -19

Jiaojiao Pang<sup>1#</sup>, Feng Xu<sup>1,2,3#</sup>, Gianmarco Aondio<sup>4#</sup>, Yu Li<sup>5</sup>, Alberto Fumagalli<sup>4</sup>, Ming Lu<sup>2</sup>, Giuseppe Valmadre<sup>4</sup>, Jie Wei<sup>6</sup>, Yuan Bian<sup>1</sup>, Margherita Canesi<sup>7</sup>, Giovanni Damiani<sup>8</sup>, Yuan Zhang<sup>2</sup>, Dexin Yu<sup>9</sup>, Jun Chen<sup>10</sup>, Xiang Ji<sup>5</sup>, Wenhai Sui<sup>3</sup>, Bailu Wang<sup>2</sup>, Shuo Wu<sup>1</sup>, Attila Kovacs<sup>11</sup>, Miriam Revera<sup>12</sup>, Hao Wang<sup>13</sup>, Ying Zhang<sup>1</sup>, Yuguo Chen<sup>1,2,3\*</sup>, and Yihai Cao<sup>14\*</sup>

1 Department of Emergency Medicine, Shandong Provincial Clinical Research Center for Emergency and Critical Care Medicine, Institute of Emergency and Critical Care Medicine of Shandong University, Qilu Hospital of Shandong University, Jinan, Shandong, 250012, China.

2 Clinical Research Center of Shandong University, Jinan, Shandong, 250012, China.

3 Key Laboratory of Cardiovascular Remodeling and Function Research, Chinese Ministry of Education, Chinese National Health Commission and Chinese Academy of Medical Sciences, the State and Shandong Province Joint Key Laboratory of Translational Cardiovascular Medicine, Jinan, Shandong, 250012, China.

4 Department of Medicine and Oncology, Moriggia-Pelascini Hospital, Gravedona ed Uniti, Gravedona, 22015, Italy.

5 Department of Pulmonary and Critical Care Medicine, Qilu Hospital of Shandong University, Jinan, Shandong, 250012, China.

6 Department of Emergency Medicine, Renmin Hospital of Wuhan University, Wuhan, Hubei, 430060, China.

7 Department of Neurological Rehabilitation, Moriggia-Pelascini Hospital, Gravedona ed Uniti, Gravedona, 22015, Italy.

8 Department of Radiology, Moriggia-Pelascini Hospital, Gravedona ed Uniti, Gravedona, 22015, Italy.

9 Department of Radiology, Qilu Hospital of Shandong University, Jinan, Shandong, 250012, China.

10 Department of Radiology, Renmin Hospital of Wuhan University, Wuhan, Hubei, 430060, China.

11 Department of Intensive Care Unit, Moriggia-Pelascini Hospital, Gravedona ed Uniti, Gravedona, 22015, Italy.

12 Department of Cardiology, Moriggia-Pelascini Hospital, Gravedona ed Uniti, Gravedona, 22015, Italy.

13 Department of Critical Care Medicine, Qilu Hospital of Shandong University, Jinan, Shandong, 250012, China.

14 Department of Microbiology, Tumor and Cell Biology, Karolinska Institutet, Stockholm 17177, Sweden.

**\*Correspondence**, galley proofs and reprint requests should be addressed to: Yuguo Chen, MD, Department of Emergency Medicine, Qilu Hospital of Shandong University, 250012 Jinan, China. Tel: (+86) 0531-8216 6843; Email: [chen919085@sdu.edu.cn](mailto:chen919085@sdu.edu.cn).

Yihai Cao, MD, PhD, Department of Microbiology, Tumor and Cell Biology,

NOTE: This preprint reports new research that has not been certified by peer review and should not be used to guide clinical practice.

1 Karolinska Institutet, 171 77 Stockholm, Sweden. Tel: (+46)-8-5248 7596; E-mail:  
2 [yihai.cao@ki.se](mailto:yihai.cao@ki.se).

3

4 #These authors contributed equally to the work.

5

6 Manuscript word count: 3,349 words

## ABSTRACT

1  
2 On the basis of Covid-19-induced pulmonary pathological and vascular changes, we  
3 hypothesized that the anti-VEGF drug bevacizumab might be beneficial for treating  
4 Covid-19 patients. We recruited 26 patients from 2-centers (China and Italy) with  
5 confirmed severe Covid-19, with respiratory rate  $\geq 30$  times/min, oxygen saturation  
6  $\leq 93\%$  with ambient air, or partial arterial oxygen pressure to fraction of inspiration  $O_2$   
7 ratio ( $PaO_2/FiO_2$ )  $> 100$  mmHg and  $\leq 300$  mmHg, and diffuse pneumonia confirmed by  
8 chest radiological imaging. This trial was conducted from Feb 15 to April 5, 2020,  
9 and followed up for 28 days. Relative to comparable control patients with severe  
10 Covid-19 admitted in the same centers, bevacizumab showed clinical efficacy by  
11 improving oxygenation and shortening oxygen-support duration. Among 26  
12 hospitalized patients with severe Covid-19 (median age, 62 years, 20 [77%] males),  
13 bevacizumab plus standard care markedly improved the  $PaO_2/FiO_2$  ratios at days 1  
14 and 7 (elevated values, day 1, 50.5 [4.0,119.0],  $p < 0.001$ ; day 7, 111.0 [85.0,165.0],  
15  $p < 0.001$ ). By day 28, 24 (92%) patients showed improvement in oxygen-support  
16 status, 17 (65%) patients were discharged, and none showed worsen oxygen-support  
17 status nor died. Significant reduction of lesion areas and ratios were shown in chest  
18 CT or X-ray analysis within 7 days. Of 14 patients with fever, body temperature  
19 normalized within 72 hours in 13 (93%) patients. Lymphocyte counts in peripheral  
20 blood were significantly increased and CRP levels were markedly decreased as shown  
21 in available data. Our findings suggested bevacizumab plus standard care was highly  
22 beneficial for treating patients with severe Covid-19. Clinical efficacy of  
23 bevacizumab warrants double blind, randomized, placebo-controlled trials.

24

25 **KEY WORDS:** Covid-19, Bevacizumab, Pneumonia

- 1 **TRIAL REGISTRATION:** ClinicalTrials.gov Identifier: NCT04275414, URL:
- 2 <https://clinicaltrials.gov/ct2/show/NCT04275414>.

## INTRODUCTION

1  
2 Coronavirus disease 2019 (Covid-19) is an ongoing worldwide pandemic.<sup>1</sup>As of July  
3 7, 2020, there were 11,468,979 confirmed cases with 535,181 deaths across 216  
4 countries. Among the confirmed cases, 19%-30% were classified as severe.<sup>2,3</sup>  
5 Dyspnoea caused by inflammatory pulmonary effusion or edema presents in almost  
6 all patients with severe Covid-19 and instigates pulmonary and systemic hypoxia.<sup>4-6</sup>  
7 Although many commendable efforts have been made,<sup>7-9</sup> no drug with demonstrated  
8 clinical efficacy for severe Covid-19 is available. Approaches of oxygen-support  
9 including mechanical ventilation, non-invasive ventilation, high-flow oxygen, and  
10 low-flow oxygen become indispensable, which are closely associated with long  
11 hospital stay,<sup>2-4,10</sup> causing a worldwide shortage of ventilators and other respiratory  
12 support medical supplies. The serious pandemic situation poses a global challenge for  
13 medical supplies and demands an urgent need for developing effective drugs.<sup>11</sup>

14  
15 We propose a novel therapeutic concept that blocking vascular endothelial growth  
16 factor (VEGF) for treating patients with severe Covid-19 patients. Acute respiratory  
17 distress syndrome (ARDS) and dyspnea create hypoxia in lung tissues and other  
18 organs. Hypoxia induces VEGF expression through activation of the Prolyl  
19 hydroxylases (PHD)-hypoxia inducible factor (HIF)-1 pathway, which upregulates  
20 VEGF expression through transcription activation.<sup>12</sup> VEGF is a potent vascular  
21 permeability factor that induces vascular leakiness in Covid-19-infected lung tissues,  
22 resulting in plasma extravasation and pulmonary edema, which further increases  
23 tissue hypoxia.<sup>13,14</sup> Additionally, VEGF significantly participates in lung  
24 inflammation.<sup>15</sup> Blocking VEGF and the VEGFR-mediated signaling would improve  
25 oxygen perfusion and anti-inflammatory response and alleviate clinical symptoms in

1 patients with severe Covid-19. Thus, we employed bevacizumab, a humanized anti-  
2 VEGF monoclonal antibody, for treating patients with severe Covid-19.

3

4 Supportive clinical evidence for our therapeutic hypothesis includes: 1) patients with  
5 severe Covid-19 suffer from severe hypoxia; 2) VEGF levels in patients with severe  
6 Covid-19 are markedly elevated;<sup>5</sup> 3) pulmonary edema frequently presents in Covid-  
7 19 patients;<sup>16,17</sup> 4) autopsy analysis of Covid-19 patients shows excessive extravasates  
8 in alveoli of the infected lungs;<sup>18,19</sup> 5) vascular disorganization and endothelial cell  
9 proliferation in the Covid-19-infected lung tissues,<sup>18,19</sup> suggesting VEGF-induced  
10 vascular effects; 6) overreactive inflammatory response;<sup>20</sup> and 7) experimental  
11 animal models demonstrate that anti-VEGF therapy significantly improves pulmonary  
12 edema.<sup>21,22</sup> In confirmatory with our hypothesis, recent studies have also demonstrated  
13 vascular dysfunction of the Covid-19-infected tissues<sup>23,24</sup>.

14

15 Bevacizumab has been used in clinical oncotherapy since 2004, with considerable  
16 reliability and safety. Taken together, we designed this trial to investigate clinical  
17 benefits of bevacizumab plus standard care for treating patients with severe Covid-19.

## METHODS

1

### 2 Study Participants

3 Patients aged 18 to 80 years with a confirmed Covid-19 diagnosis were eligible if  
4 they had respiratory distress with a respiratory rate (RR) of  $\geq 30$  times/min, oxygen  
5 saturation (SpO<sub>2</sub>) of  $\leq 93\%$  while they were breathing ambient air, or a partial arterial  
6 oxygen pressure to fraction of inspiration O<sub>2</sub> ratio (PaO<sub>2</sub>/FiO<sub>2</sub>) of  $> 100$  mmHg and  
7  $\leq 300$  mmHg, and diffuse pneumonia confirmed by chest radiological imaging. A  
8 confirmed Covid-19 diagnosis was based on epidemiological history (including  
9 cluster transmission) and a positive reverse-transcriptase polymerase-chain-reaction  
10 (RT-PCR) assay (BioPerfectus Technologies, China; ELITech Group, France;  
11 Seegene, Korea) performed by the local center for disease control or a designated  
12 diagnostic laboratory.

13

14 The following patients were excluded from the trial: 1) patients with severe hepatic  
15 dysfunction (Child-Pugh score  $\geq C$  or aspartate aminotransferase level  $> 5$  times the  
16 upper reference limit, URL); 2) patients with severe renal dysfunction (estimated  
17 glomerular filtration rate  $\leq 30$  mL/min/1.73 m<sup>2</sup>) or who required continuous renal  
18 replacement therapy, haemodialysis, or peritoneal dialysis; 3) patients with  
19 uncontrolled hypertension (sitting systolic blood pressure  $> 160$  mmHg or diastolic  
20 blood pressure  $> 100$  mmHg) or a history of hypertension crisis or hypertensive  
21 encephalopathy; 4) patients with poorly controlled heart diseases, such as New York  
22 Heart Association class II or higher cardiac insufficiency, unstable angina pectoris,  
23 myocardial infarction within 1 year before enrollment, or supraventricular or  
24 ventricular arrhythmia needing treatment or intervention; 5) patients with hereditary  
25 bleeding tendency or coagulopathy, and patients who received full-dose anticoagulant

1 or thrombolytic therapy within 10 days before enrollment, or non-steroidal anti-  
2 inflammatory drugs with platelet suppression within 10 days before enrolment (except  
3 those who used small doses of aspirin [ $\leq 325$  mg/day] for preventive use); 6) patients  
4 with thrombosis within 6 months before enrollment, patients who had experienced  
5 arterial/venous thromboembolic events, such as ischemic stroke, transient ischemic  
6 attack, deep venous thrombosis, or pulmonary embolism within 1 year prior to trial  
7 enrollment, and patients with severe vascular diseases (including aneurysms or  
8 arterial thrombosis requiring surgery) within 6 months before trial enrollment; 7)  
9 patients with unhealed wounds, active gastric ulcers, or fractures; patients with  
10 gastrointestinal perforation, gastrointestinal fistula, abdominal abscess, or visceral  
11 fistula formation within 6 months before trial enrollment; 8) patients who had  
12 undergone major surgery (including preoperative chest biopsy) or received major  
13 trauma (such as a fracture) within 28 days before enrollment; patients who might need  
14 surgery during the trial; 9) patients with severe, active bleeding such as haemoptysis,  
15 gastrointestinal bleeding, central nervous system bleeding, and epistaxis within 1  
16 month before trial enrollment; 10) patients with malignant tumours within 5 years  
17 before trial enrollment; 11) patients allergic to bevacizumab or its components; 12)  
18 patients with untreated active hepatitis or HIV-positive patients; pregnant and  
19 lactating women and those planning to get pregnant; 13) patients who participated in  
20 other clinical trials or not considered suitable for this trial by the researchers; or 14)  
21 patients who did not provide signed informed consent.

22

### 23 **Control Cohort**

24 An external comparison cohort were selected from the same centers, who met the  
25 inclusion criteria as well as the exclusion criteria without severe hepatic, renal or



1 cardiac dysfunction, and are comparable to the bevacizumab-treated groups  
2 considering race, age, gender, and the baseline PaO<sub>2</sub>/FiO<sub>2</sub>. The informed consent was  
3 waived.

4

#### 5 **Trial Design and Oversight**

6 This was a single-arm trial (ClinicalTrials.gov NCT04275414) conducted from  
7 February 15 to April 5, 2020 (enrollment of the last patient), which enrolled patients  
8 in Renmin Hospital of Wuhan University, Wuhan, Hubei Province, China from  
9 February 15 to March 8, 2020, and enrolled patients in Italia Hospital S.p.A. Ospedale  
10 Generale di Zona Moriggia - Pelascini, Gravedona ed Uniti (CO), Italy from March  
11 25 to April 5, 2020, and followed up for 28 days or until hospital discharge. All  
12 eligible patients evaluated by investigators were enrolled. Each eligible patient  
13 received a single dose (500 mg) of bevacizumab (Qilu Pharmaceutical Co. LTD and  
14 Roche Pharmaceutical Co. LTD) dissolved in 100 ml of saline intravenously in no less  
15 than 90 min under electrocardiography monitoring and standard care. Standard care  
16 included supplemental oxygen, non-invasive and invasive ventilation, antiviral or  
17 antibiotic agents, vasopressor support, and extracorporeal membrane oxygenation as  
18 necessary. The trial was approved by the ethics committees of Qilu Hospital of  
19 Shandong University, Renmin Hospital of Wuhan University, and Italia Hospital  
20 S.p.A. Ospedale Generale di Zona Moriggia - Pelascini, Gravedona ed Uniti (CO).  
21 Written informed consents were obtained from all patients or the legal representatives  
22 of patients if they were unable to provide consents by themselves. The adverse events  
23 were monitored and adjudicated by the Safety Monitoring Committee. All the adverse  
24 events were handled timely with proper medical treatment to avoid further damage.  
25 The trial was conducted in accordance with the principles of the Declaration of

1 Helsinki and the Good Clinical Practice guidelines of the International Conference on  
2 Harmonisation.

3

#### 4 **Outcomes and Measures**

5 Primary outcomes were changes of PaO<sub>2</sub>/FiO<sub>2</sub> at day 1 and day 7. PaO<sub>2</sub> was measured  
6 by arterial blood gas (ABG) and FiO<sub>2</sub> at the time of clinical ABG was obtained.  
7 Secondary outcomes included change of chest radiological imaging at day 7, as well  
8 as oxygen-support status, discharge rate and change of fever symptom during 28 days  
9 follow-up. Oxygen-support status referred to mechanical ventilation, non-invasive  
10 ventilation, a transition status of alternate use of non-invasive ventilation and high-  
11 flow oxygen, high-flow oxygen, low-flow oxygen or ambient air. Chest radiological  
12 imaging referred to chest CT or X-ray, which was quantified or semi-quantified by  
13 software or team of experts, respectively. Fever was defined as axillary temperature ≥  
14 37.5°C.

15

#### 16 **Disease Severity Classification**

17 The severity of Covid-19 was defined according to the Chinese Clinical Guidance for  
18 Covid-19 Diagnosis and Treatment (the 7th edition). According to this guidance,  
19 Covid-19 patients were triaged into the following categories: 1) severe type was  
20 defined as adults meeting any of the following criteria: a. shortness of breath, RR≥30  
21 times/min; b. oxygen saturation SpO<sub>2</sub> ≤93% at rest; c. PaO<sub>2</sub>/FiO<sub>2</sub>≤300mmHg,  
22 patients whose pulmonary imaging displays significant progression of lesion>50%  
23 within 24-48 hours should be treated as severe type; 2) critically severe type, patients  
24 met any of the following: a. respiratory failure requiring mechanical ventilation; b.  
25 shock; c. critical comorbidity with other organ failure that needs ICU monitoring and

1 treatment.

2

### 3 **Clinical, Laboratory and Radiological Data Collection**

4 Arterial blood gas analysis, chest computed tomography (CT) scanning, chest X-ray,  
5 and laboratory tests were performed in Renmin Hospital of Wuhan University, and  
6 Moriggia – Pelascini Hospital respectively. The patients' PaO<sub>2</sub>/FiO<sub>2</sub> ratios were  
7 assessed at baseline (within 24 hours prior to bevacizumab administration) , on days  
8 1 and 7; chest CT were performed at baseline (within 48 hours prior to bevacizumab  
9 administration) and day 7 (±1 day), or alternatively performed chest X-ray at baseline  
10 (within 48 hours prior to bevacizumab administration) at days 3 and 7; laboratory  
11 tests including blood routine and C-reactive protein (CRP) at baseline (within 48  
12 hours prior to bevacizumab administration) and day 7 was added into the protocol  
13 conducted in the Italian population after trial commencement, because we observed a  
14 phenomenon of rapid abatement of fever post-bevacizumab administration in the  
15 middle of the study. Clinical data including demographic data, presenting symptoms,  
16 the changes of status of oxygen-support as well as the symptom of fever were  
17 recorded using case record forms. This information was sequently entered into an  
18 electronic database and validated by trial staff. Chest CT images were quantified  
19 using a medical imaging diagnosis support platform (Huiying Medical Technology  
20 Co. LTD, Beijing) to obtain the volume and the ratios of the lesions in bilateral lungs.  
21 X-ray images were semi-quantified by the Committee of Imaging Experts using the  
22 above platform to assess the ratios of the lesions in bilateral lungs.

23

### 24 **Statistical Analysis**

25 No sample-size calculations were performed. The population under analysis included

1 eligible patients who received a single dose of bevacizumab, and for whom clinical  
2 data were available. Categorical variables were reported as numbers and percentages,  
3 and quantitative variables as means and standard deviations or medians and quartiles.  
4 To compare differences between different time points after intervention and baseline  
5 point, a paired t-test or Wilcoxon matched-pairs signed-rank test was used for  
6 quantitative data. Statuses of oxygen-support and body temperature during 28 days in  
7 the bevacizumab-treated population were described with Gantt charts. Safety  
8 measurements applied to all patients exposed to bevacizumab. Statistical significance  
9 was indicated by a *p* value of 0.05 and was determined with the use of a two-sided  
10 hypothesis test. Wilcoxon signed-rank test and Chi-square test were used to compare  
11 the external control and bevacizumab group. All analyses were conducted with SAS  
12 software, version 9.4 (SAS Institute, USA).

13

## RESULTS

1

### 2 **Study Participants**

3 Twenty-seven patients were assigned to receive a single dose of bevacizumab,  
4 including 13 patients from China and 14 patients from Italy, among whom 1 patient  
5 dropped out owing to withdrew consent (Fig. 1). The median age of patients was 62  
6 years, and 20 (77%) were men. The median time from symptom onset to admission  
7 were 10 days, while the median interval from admission to bevacizumab  
8 administration were 7 days. Fever 25 (96%), dry cough 21 (81%), shortness of breath  
9 19 (73%), and fatigue 17 (65%) were common onset symptoms. Half of the patients  
10 had hypertension history and six (23%) had diabetes history. Patients in Chinese and  
11 Italian groups were similar in age, maximum body temperature, medical history, and  
12 common clinical symptoms. Days from hospitalization to bevacizumab treatment  
13 were significantly longer for patients in the Chinese group than the Italian group  
14 (Table 1).

15

### 16 **PaO<sub>2</sub>/FiO<sub>2</sub> Ratios**

17 PaO<sub>2</sub>/FiO<sub>2</sub> values markedly increased at days 1 and 7 after bevacizumab  
18 administration compared to the baseline values. Differences in genetic background,  
19 treatment approaches, and admission-to-bevacizumab administration time between  
20 the Chinese and Italian populations should not be ignored. Therefore, we performed a  
21 subgroup analysis. Both populations showed markedly increases of PaO<sub>2</sub>/FiO<sub>2</sub> values  
22 at day 1 post-bevacizumab treatment relative to the baseline values, whereas at day 7,  
23 only Italian population displayed increases of PaO<sub>2</sub>/FiO<sub>2</sub> ratios with statistical  
24 significance. Among all the patients, 20 of the 26 patients (77%) showed  
25 improvement of PaO<sub>2</sub>/FiO<sub>2</sub> ratios after bevacizumab treatment (Table 2).

1

## 2 **Oxygen-Support Status**

3 After receiving a single dose of bevacizumab, 24 of 26 patients (92%) showed  
4 marked improvement and 2 patients (8%) showed no change in oxygen-support  
5 within 28-day follow-up. Inspiringly, 17 of 26 patients (65%) were discharged. Six  
6 patients receiving invasive or non-invasive ventilation stopped ventilator support and  
7 4 of 6 patients (67%) were discharged within follow-up. For the 2 patients with no  
8 change in oxygen-support, one breathed ambient air at baseline. None of the 26  
9 patients showed worsened status of oxygen-support nor died after bevacizumab  
10 treatment in the 28-day follow-up trial (Fig. 2).

11

## 12 **Chest Radiological Imaging**

13 Eight patients received chest CT scanning and 12 patients received bedside or  
14 traditional X-ray examination alternatively at the required timepoints. Six patients,  
15 despite of good recovery (patient No. 15, 19, 21, 22, 23, and 26 shown in Fig. 2),  
16 were unable to receive chest radiological examination in time due to unavailability of  
17 CT machines, shortage of medical staff, or being discharged. The quantified results of  
18 chest CT showed that the total lesion areas ( $\text{cm}^3$ ) and the lesion ratios (%) for both the  
19 lungs significantly reduced at day 7 relative to baseline. Regarding changes in  
20 characteristic pulmonary lesions, the number of ground-glass opacities increased and  
21 the number of patchy shadows decreased at day 7 compared to the baseline value,  
22 which indicated the pulmonary inflammatory exudation was progressively absorbed,  
23 however the increase and decrease were not significant. No consolidation lesions  
24 were shown in chest CT images of these patients. The semi-quantification of chest X-  
25 ray images showed, the lesion ratios of the right lungs remarkably reduced at day 3

1 and day 7 compared to baseline (Table 3). The representative chest CT as well as X-  
2 ray images were shown in Fig.3 and Fig.4.

3

#### 4 **Fever Symptom**

5 Surprisingly, we observed a phenomenon of rapid abatement of fever in 13 of 14  
6 febrile patients (93%) within 3 days after bevacizumab treatment regardless of the  
7 days of febrile from admission to bevacizumab treatment, which were in a range of 0  
8 to 8 days. One trachea intubation patient was an exception with a persistent fever,  
9 who had got sepsis that was evidenced by blood and urine bacteria culture (Fig. 5).  
10 From the available values of laboratory tests at baseline and day 7, the peripheral  
11 blood lymphocyte counts and the level of CRP were significantly increased and  
12 decreased at day 7, respectively (Fig. 5 and Table S1).

13

#### 14 **Safety**

15 Safety data were collected from all 27 patients. Elevation of hepatic enzymes (30%)  
16 including alanine aminotransferase and aspartate aminotransferase was the most  
17 common adverse event. Other adverse events: 5 patients (19%) showed reduced  
18 hemoglobin values; 4 patients (15%) with decreased platelet counts; 3 patients (11%)  
19 showed modest elevation of blood pressure, a common adverse event related to  
20 bevacizumab; 2 patients (7%) had elevated blood urea nitrogen and normal serum  
21 creatinine values; 2 patients (7%) developed sepsis. Haemorrhagic urea, diarrhea, skin  
22 rash, muscle pains in lower extremity, superficial phlebitis at the site of venepuncture,  
23 and sinus tachycardia with atrial premature beats occurred in one patient, respectively  
24 (Table 4).

25

## 1 **External controls**

2 For an external comparison cohort, we screened patients with severe Covid-19 who  
3 were eligible as control cases admitted during the same period as the bevacizumab-  
4 treated group in two centers, and 26 external control patients were included as a 1:1  
5 ratio to bevacizumab-treated patients. The baseline characteristics were comparable  
6 between the two groups (Table 5). Compared with the control group, bevacizumab  
7 treatment significantly elevated PaO<sub>2</sub>/FiO<sub>2</sub> values at days 1 and 7. Standard care had  
8 no impact on improving PaO<sub>2</sub>/FiO<sub>2</sub> values on average in control groups during the  
9 comparable period. Relative to controls, the beneficial effect of bevacizumab on  
10 oxygenation became obviously significant after 24-hour bevacizumab treatment.  
11 These findings indicate that clinical benefits of bevacizumab treatment occur already  
12 at early time points (Table 6). Compared with the control group, a significantly  
13 increased number of patients improved the 28-day oxygen-support status (control,  
14 62% vs. bevacizumab, 92%) and the discharge rate (control, 46% vs. bevacizumab,  
15 65%) (Fig. S1). The bevacizumab-treated patients also showed less deterioration  
16 relative to the control group (control, 19% vs. bevacizumab, 0%). Additionally,  
17 bevacizumab treatment significantly shortened the duration of oxygen-support  
18 (control, median 20 [IQR 14,28] days vs. bevacizumab, median 9 [IQR 5,19] days,  
19  $p=0.003$ ). When compared our data with other published studies (Table S2),  
20 bevacizumab showed potential comparably competitive strength to remdesivir,  
21 lopinavir–ritonavir, and convalescent plasma. Thus, our findings are encouraging and  
22 may become a first-line therapeutic regimen for treating patients with severe Covid-  
23 19.



## DISCUSSION

1

2 Despite initiation of numerous trials since the Covid-19 outbreak, almost no effective  
3 therapy is available. In this preliminary trial, we report clinical findings in patients  
4 with severe Covid-19 from two medical centers of China and Italy. To the best of our  
5 knowledge, the concept of implementing bevacizumab for treating patients with  
6 severe Covid-19 is completely novel and has not been explored.

7

8 Patients receiving a single-dose treatment with bevacizumab improved the oxygen-  
9 support status by 92% during 28-day follow-up without causing death, whereas in the  
10 external comparison cohort receiving only standard care, the improvement rate of  
11 oxygen-support status was only 62%, and the deterioration rate was 19% including 3  
12 death. Bevacizumab treatment significantly shortened the duration of oxygen-support  
13 compared with the control cohort.

14

15 There are several unexpected findings from this trial: 1) Rapid improvement of the  
16  $\text{PaO}_2/\text{FiO}_2$  values. Within 24 hours after delivery of bevacizumab, the majority of  
17 patients with severe Covid-19 showed rapid improvement of the  $\text{PaO}_2/\text{FiO}_2$  ratio; 2)  
18 Rapid abatement of fever. Within 72 hours after bevacizumab, 93% of patients  
19 exhibited normal body temperature; Although limited laboratory tests were available,  
20 the following two findings are still noteworthy: 3) Increase of PB lymphocyte counts.  
21 Patients suffered from lymphopenia, and at day 7 after bevacizumab treatment they  
22 showed marked increases of PB lymphocytes; and 4) Anti-inflammation. An over 12-  
23 fold decrease of CRP was observed in bevacizumab-treated patients.

24

25 Rapid improvement of  $\text{PaO}_2/\text{FiO}_2$  values might reflect the anti-vascular leakiness

1 effect by bevacizumab. A similar rapid response for improving visual acuity by anti-  
2 VEGF treatment was also seen in patients with wet age-related macular degeneration  
3 (AMD).<sup>25</sup> VEGF likely significantly contributed to Covid-19-induced inflammation.  
4 It is known that VEGF mobilizes inflammatory cells to pathological tissues and anti-  
5 VEGF would alleviate fever by antagonizing the virus-triggered inflammation.<sup>26,27</sup> At  
6 this time of writing, the mechanism underlying increases of lymphocytes is unknown.  
7 It is speculated that blocking VEGF by bevacizumab might affect extravasation and  
8 redistribution of lymphocytes. As lymphopenia is one of the key pathological changes  
9 in contributing to Covid-19 fatality,<sup>28,29</sup> increases of the lymphocytic population  
10 would reduce the death rates in severe patients.

11

12 Bevacizumab at a dose range of 5-15 mg/kg is routinely used in oncology and about  
13 7.5 mg/kg used in our trial was within the lower range. Bevacizumab-related serious  
14 adverse events such as gastrointestinal perforation, haemorrhages, and nephrotic  
15 syndrome were absent in both bevacizumab-treated Chinese and Italian populations.  
16 No severe safety concerns were detected in this drug use cohort.

17

18 It is known that circulating VEGF levels were elevated in patients with severe Covid-  
19 19 in Wuhan<sup>5</sup>. Owing to the following reasons, we did not measure plasma VEGF  
20 levels: 1) the Covid-19 pandemic-associated limitation of feasibility; 2) plasma VEGF  
21 levels may not reflect local VEGF production in pulmonary tissues; and 3) most  
22 VEGF isoforms binds to heparin and may be sequestered the tissues where they  
23 produce.

24

25 The limitation of these results is the small size of the cohort. However, significant

1 improvements of multiple clinical parameters in bevacizumab-treated patients suggest  
2 that anti-VEGF might benefit for treating patients with Covid-19. In particular, it is  
3 worthy to design future trials by combining bevacizumab with other therapeutic  
4 modalities such as anti-viral and anti-inflammatory drugs. Given the limited medical  
5 supply and available facility in most medical centers, a single injection of  
6 bevacizumab might immediately relieve clinical symptoms and early discharge of  
7 patients with severe Covid-19. The therapeutic benefits of bevacizumab monotherapy  
8 and combination therapy warrant future validation in patients with severe Covid-19  
9 by randomized and placebo-controlled trials.

1

## ACKNOWLEDGEMENTS

2 This study was supported by grants from National Key R & D Program of China  
3 (2020YFC0846600) and Shandong Provincial Key R&D Program  
4 (2020SFXGFY03). The laboratory of Y.C. is supported through research grants from the  
5 European Research Council (ERC) advanced grant ANGIOFAT (project no 250021), the  
6 Swedish Research Council, the Swedish Cancer Foundation, the Strategic Research Areas  
7 (SFO)–Stem Cell and Regeneration Medicine Foundation, the Karolinska Institutet, the  
8 Swedish Children’s Cancer Foundation, the Karolinska Institutet Foundation, the  
9 Karolinska Institutet Distinguished Professor Award, the Torsten Soderbergs Foundation,  
10 the Maud and Birger Gustavsson Foundation, the Novo Nordisk Foundation–Advance  
11 grant, and the Knut and Alice Wallenberg’s Foundation.

12

13

## REFERENCES

- 1
- 2 1 World Health Organization. Coronavirus disease (Covid-19) outbreak.  
3 <https://www.who.int>.
- 4 2 Wu Z, McGoogan JM. Characteristics of and Important Lessons From the  
5 Coronavirus Disease 2019 (Covid-19) Outbreak in China: Summary of a Report  
6 of 72314 Cases From the Chinese Center for Disease Control and Prevention.  
7 JAMA. doi: 10.1001/jama.2020.2648 (2020 Feb).
- 8 3 Yang, X., Y. Yu, J. Xu, et al. Clinical course and outcomes of critically ill patients  
9 with SARS-CoV-2 pneumonia in Wuhan, China: a single-centered, retrospective,  
10 observational study. *Lancet Respir Med.* 8 (5), 475-481 (2020).
- 11 4 Bhatraju, P.K., B.J. Ghassemieh, M. Nichols, R. Kim, K.R. Jerome, et al. Covid-  
12 19 in Critically Ill Patients in the Seattle Region - Case Series. *N Engl J Med.* 382  
13 (21), 2012-2022 (2020).
- 14 5 Huang, C., Y. Wang, X. Li, et al. Clinical features of patients infected with 2019  
15 novel coronavirus in Wuhan, China. *Lancet.* 395 (10223), 497-506 (2020).
- 16 6 Goyal, P., J.J. Choi, L.C. Pinheiro, et al. Clinical Characteristics of Covid-19 in  
17 New York City. *N Engl J Med.* doi: 10.1056/NEJMc2010419 (2020 Apr).
- 18 7 Cao, B., Y. Wang, D. Wen, et al. A Trial of Lopinavir-Ritonavir in Adults  
19 Hospitalized with Severe Covid-19. *N Engl J Med.* 382 (19), 1787-1799 (2020).
- 20 8 Grein, J., N. Ohmagari, D. Shin, G. Diaz, et al. Compassionate Use of  
21 Remdesivir for Patients with Severe Covid-19. *N Engl J Med.* doi:  
22 10.1056/NEJMoa2007016 (2020 Apr).
- 23 9 Borba MGS, Val FFA, Sampaio VS, et al. Effect of High vs Low Doses of  
24 Chloroquine Diphosphate as Adjunctive Therapy for Patients Hospitalized With  
25 Severe Acute Respiratory Syndrome Coronavirus 2 (SARS-CoV-2) Infection: A  
26 Randomized Clinical Trial. *JAMA Netw Open.* 3 (4), e208857 (2020).
- 27 10 Torres A, Loeches IM, Sligl W, Lee N. Severe flu management: a point of view.  
28 *Intensive Care Med.* 46 (2), 153-62 (2020).
- 29 11 Harris C, Carson G, Baillie JK, Horby P, Nair H. An evidence-based framework  
30 for priority clinical research questions for Covid-19. *J Glob Health.* 10 (1),  
31 011001 (2020).
- 32 12 Liu Y, Cox SR, Morita T, Kourembanas S. Hypoxia regulates vascular endothelial  
33 growth factor gene expression in endothelial cells. Identification of a 5' enhancer.

- 1        Circ Res. 77 (3), 638-43 (1995).
- 2    13 Marti HH, Risau W. Systemic hypoxia changes the organ-specific distribution of  
3        vascular endothelial growth factor and its receptors. Proc Natl Acad Sci U S A. 95  
4        (26), 15809-14 (1999).
- 5    14 Kaner RJ, Ladetto JV, Singh R, Fukuda N, Matthay MA, Crystal RG. Lung  
6        overexpression of the vascular endothelial growth factor gene induces pulmonary  
7        edema. Am J Respir Cell Mol Biol. 22 (6), 657-64 (2000).
- 8    15 Lee, C.G., H. Link, P. Baluk, et al. Vascular endothelial growth factor (VEGF)  
9        induces remodeling and enhances TH2-mediated sensitization and inflammation  
10       in the lung. Nat Med, 10 (10), 1095-103 (2004).
- 11   16 Rodriguez-Morales AJ, Cardona-Ospina JA, Gutiérrez-Ocampo E, et al. Clinical,  
12       laboratory and imaging features of Covid-19: A systematic review and meta-  
13       analysis. Travel Med Infect Dis. 34, 101623 (2020).
- 14   17 Guan WJ, Ni ZY, Hu Y, et al. Clinical Characteristics of Coronavirus Disease  
15       2019 in China. N Engl J Med. 382 (18), 1708-1720 (2020).
- 16   18 Liu, Q., R.S. Wang, G.Q. Qu, et al. Gross examination report of a Covid-19 death  
17       autopsy. Fa Yi Xue Za Zhi. 36 (1), 21-3 (2020).
- 18   19 Tian S, Hu W, Niu L, Liu H, Xu H, Xiao SY. Pulmonary Pathology of Early-  
19       Phase 2019 Novel Coronavirus (Covid-19) Pneumonia in Two Patients With  
20       Lung Cancer. J Thorac Oncol. 15 (5), 700-4 (2020).
- 21   20 Mehta P, McAuley DF, Brown M, Sanchez E, Tattersall RS, Manson JJ. Covid-  
22       19: consider cytokine storm syndromes and immunosuppression. Lancet. 395  
23       (10229), 1033-4 (2020).
- 24   21 Thickett DR, Armstrong L, Christie SJ, Millar AB. Vascular endothelial growth  
25       factor may contribute to increased vascular permeability in acute respiratory  
26       distress syndrome. Am J Respir Crit Care Med. 164 (9), 1601-5 (2001).
- 27   22 Watanabe M, Boyer JL, Crystal RG. Genetic delivery of bevacizumab to suppress  
28       vascular endothelial growth factor-induced high-permeability pulmonary edema.  
29       Hum Gene Ther. 20 (6), 598-610 (2009).
- 30   23 Varga Z, Flammer AJ, Steiger P, et al. Endothelial cell infection and endotheliitis  
31       in COVID-19. Lancet. 2020 May 2;395(10234):1417-1418.
- 32   24 Ackermann M, Verleden SE, Kuehnel M, et al. Pulmonary Vascular  
33       Endothelialitis, Thrombosis, and Angiogenesis in Covid-19. N Engl J Med. 2020  
34       May 21. doi: 10.1056/NEJMoa2015432.

- 1 25 Scott IU, VanVeldhuisen PC, Ip MS, et al. Effect of Bevacizumab vs Aflibercept  
2 on Visual Acuity Among Patients With Macular Edema Due to Central Retinal  
3 Vein Occlusion: The SCORE2 Randomized Clinical Trial. *JAMA*. 317 (20),  
4 2072-87 (2017).
- 5 26 Zhang, Y., Y. Lu, L. Ma, et al. Activation of vascular endothelial growth factor  
6 receptor-3 in macrophages restrains TLR4-NF-kappaB signaling and protects  
7 against endotoxin shock. *Immunity*. 40 (4), 501-14 (2014).
- 8 27 Janela, B., A.A. Patel, M.C. Lau, et al. A Subset of Type I Conventional Dendritic  
9 Cells Controls Cutaneous Bacterial Infections through VEGFalpha-Mediated  
10 Recruitment of Neutrophils. *Immunity*. 50 (4), 1069-1083 e8 (2019).
- 11 28 Henry BM. Covid-19, ECMO, and lymphopenia: a word of caution. *Lancet*  
12 *Respir Med*. 8 (4), e24 (2020).
- 13 29 Giamarellos-Bourboulis, E.J., M.G. Netea, N. Rovina, K. Akinosoglou, et al.  
14 Complex Immune Dysregulation in Covid-19 Patients with Severe Respiratory  
15 Failure. *Cell Host Microbe*. S1931-3128 (20) 30236-5 (2020).

## TABLES

**Table 1. Baseline demographic and clinical characteristics of the patients\***

<b>Characteristics</b>	<b>Chinese (N=12)</b>	<b>Italian (N=14)</b>	<b>Total (N=26)</b>
Age, median (IQR) — yr	62 (53, 67)	63 (59, 66)	62 (55, 66)
Maximum body temperature, median (IQR) — °C	38.7 (38.3,39.5)	38.4 (38.0,39.0)	38.5 (38.0,39.0)
Symptom onset to admission, median (IQR) — days	13 (9, 16)	9 (6, 11)	10 (7, 15)
Admission to BEVA treatment, median (IQR) — days	12 (9, 24)	4 (3, 6)	7 (3, 12)
<b>Sex</b>			
Female	5 (42%)	1 (7%)	6 (23%)
Male	7 (58%)	13 (93%)	20 (77%)
<b>Medical history</b>			
Heart disease	0 (0%)	2 (14%)	2 (8%)
Hypertension	4 (33%)	9 (64%)	13 (50%)
Diabetes	2 (17%)	4 (29%)	6 (23%)
COPD	1 (8%)	2 (14%)	3 (12%)
<b>Onset symptoms</b>			
Fever	12 (100%)	13 (93%)	25 (96%)
Dry cough	8 (67%)	13 (93%)	21 (81%)
Expectoration	4 (33%)	3 (21%)	7 (27%)
Fatigue	8 (67%)	9 (64%)	17 (65%)
Shortness of breath	6 (50%)	13 (93%)	19 (73%)
Chest distress	4 (33%)	1 (7%)	5 (19%)
Chill	3 (25%)	3 (21%)	6 (23%)
Headache	2 (17%)	4 (29%)	6 (23%)

\* IQR=interquartile range; BEVA=bevacizumab; COPD=chronic obstructive pulmonary disease.



**Table 2. PaO<sub>2</sub>/FiO<sub>2</sub> ratios\***

Groups	Baseline		Difference between day 1 and baseline		Difference between day 7 and baseline		Number (%) of patients with improved PaO <sub>2</sub> /FiO <sub>2</sub> ratios
	N	median (IQR)	median (IQR)	<i>p</i> <sup>†</sup> value	median (IQR)	<i>p</i> <sup>†</sup> value	
All	26	196.5 (145.0,273.0)	50.5 (4.0,119.0)	<0.001	111.0 (85.0,165.0)	<0.001	20 (77%)
Chinese group	12	275.0 (231.0,339.5)	68.5 (7.5,139.0)	0.006	93.0 (-9.0,201.0)	0.054	9 (75%)
Italian group	14	151.5 (140.0,181.0)	35.5 (4.0,95.0)	0.004	120.5 (90.0,165.0)	<0.001	11 (79%)

\*PaO<sub>2</sub>/FiO<sub>2</sub>=partial arterial oxygen pressure to fraction of inspiration O<sub>2</sub> ratio.

IQR=interquartile range. One datum was absent at day 7 because of discharge;

†Wilcoxon matched-pairs signed-rank test.

**Table 3. Chest radiological imaging quantification\***

Chest CT quantification	N	Baseline	Day 3		Day 7	
		Median (IQR)	Median (IQR)	<i>p</i> † value	Median (IQR)	<i>p</i> † value
Patchy shadow	8	2.5 (0-4.0)	--	--	1.5 (0-3.5)	0.641
Ground-glass opacity	8	3.5 (1.5-7.0)	--	--	6.5 (3.5-10.5)	0.094
Total Lesion area (cm <sup>3</sup> )	8	1055.9 (532.8-1409.4)	--	--	680.7 (395.9-926.2)	0.039
Lesion ratio (%) — Right Lung	8	19.2 (12.8-33.6)	--	--	12.4 (9.7-15.6)	0.023
Lesion ratio (%) — Left Lung	8	35.7 (25.0-45.2)	--	--	17.7 (13.0-31.8)	0.016
<b>Chest X-ray semi-quantification</b>						
Lesion ratio (%) — Right Lung	12	48.5 (30.7-71.8)	34.0 (23.4-50.7)	0.024	26.7 (4.6-36.4)	0.005
Lesion ratio (%) — Left Lung	12	47.6 (39.4-72.8)	39.8 (30.8-49.6)	0.077	28.1 (18.8-55.2)	0.052

\*Chest radiological imaging quantification results are based on available images. Chest CT images on baseline and day 7 post-bevacizumab treatment were from 6 Chinese patients and 2 Italian patients. Chest X-ray images on baseline, day 3 and 7 post-bevacizumab treatment were from 12 Italian patients. Patient No. 15, 19, 21, 22, and 23 were unable to receive chest radiological examination on required timepoints, although they recovered well (shown in Fig. 2). Patient No. 26 was discharged at day 4. IQR = interquartile range.

†Wilcoxon matched-pairs signed-rank test.

**Table 4. Summary of adverse events\***

Events	Chinese (N=13)	Italian (N=14)	Total (N=27)
	Number of patients (%)		
<b>Adverse events</b>			
Elevated hepatic enzymes	4 (31%)	4 (29%)	8 (30%)
Decreased hemoglobin	3 (23%)	2 (14%)	5 (19%)
Reduced platelet counts	4 (31%)	0 (0%)	4 (15%)
Elevated blood urea nitrogen	0 (0%)	2 (14%)	2 (7%)
Skin rash	1 (8%)	0 (0%)	1 (4%)
Local superficial phlebitis	0 (0%)	1 (7%)	1 (4%)
Sepsis	1 (8%)	1 (7%)	2 (7%)
<b>Oncology bevacizumab-related adverse effects</b>			
Hypertension (grade $\geq 2$ ) †	2 (15%)	1 (7%)	3 (11%)
Muscle pains in lower extremity	1 (8%)	0 (0%)	1 (4%)
Diarrhea	1 (8%)	0 (0%)	1 (4%)
Cardiovascular events	1 (8%)	0 (0%)	1 (4%)
Hematuria	1 (8%)	0 (0%)	1 (4%)

\*Adverse events were analyzed for bevacizumab-treated patients whose adverse event information was submitted.

†Hypertension of grade  $\geq 2$  referred to recurrent or continuous hypertension for more than 24 hours or symptomatic increase in blood pressure by more than 20 mmHg (diastolic) or to more than 150/100 mmHg if the blood pressure was previously within the normal range.

**Table 5. Comparison of baseline demographic and clinical characteristics of non-bevacizumab-treated control and bevacizumab-treated group**

<b>Characteristic</b>	<b>Control group (N=26)</b>	<b>BEVA group (N=26)</b>	<b><i>p</i> value†</b>
Age, median (IQR) — yr	65 (58,72)	62 (55,66)	0.131
Maximum body temperature, median (IQR) — °C	38.4 (37.8,38.8)	38.5 (38.0,39.0)	0.223
Symptom onset to admission, median (IQR) — days	10 (6,15)	10 (7,15)	0.887
Sex			0.532
Female	8 (31%)	6 (23%)	
Male	18 (69%)	20 (77%)	
Medical History			
Heart disease	0 (0%)	2 (8%)	0.490
Hypertension	9 (35%)	13 (50%)	0.262
Diabetes	1 (4%)	6 (23%)	0.099
COPD	4 (15%)	3 (12%)	>0.999
Onset symptoms			
Fever	23 (88%)	25 (96%)	0.610
Dry cough	15 (58%)	21 (81%)	0.071
Expectoration	7 (27%)	7 (27%)	1.000
Fatigue	10 (38%)	17 (65%)	0.052
Shortness of breath	11 (42%)	19 (73%)	0.025
Chest distress	7 (27%)	5 (19%)	0.510
Chill	1 (4%)	6 (23%)	0.099
Headache	2 (8%)	6 (23%)	0.248

\*Four data were not recorded; †One datum was not recorded.

†Wilcoxon signed-rank test and Chi-square test.

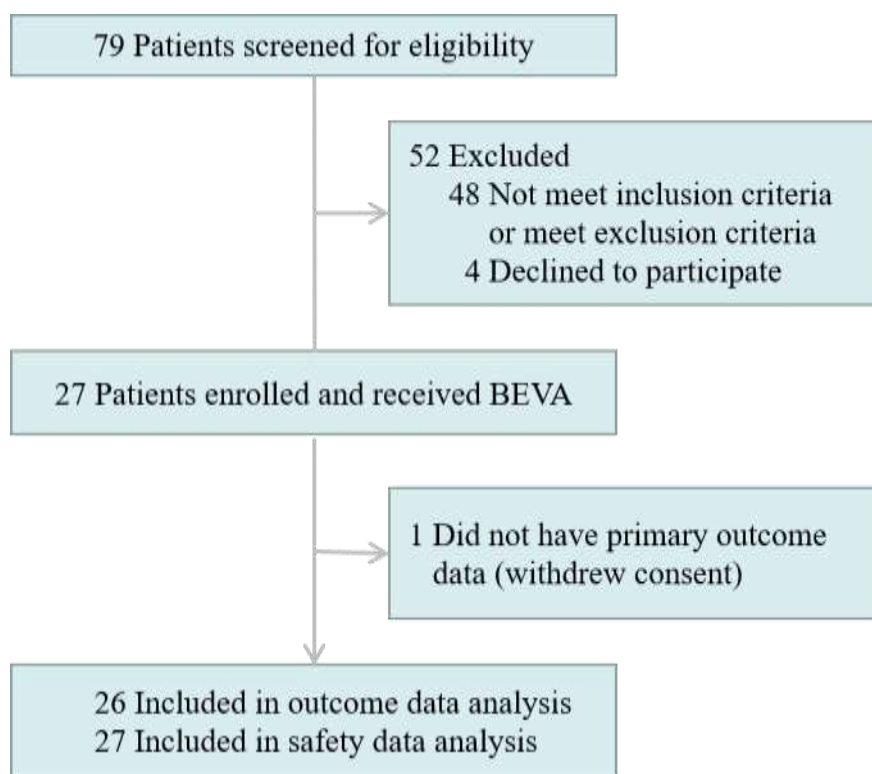
**Table 6. Comparison of PaO<sub>2</sub>/FiO<sub>2</sub> ratios between control and bevacizumab-treated group**

<b>PaO<sub>2</sub>/FiO<sub>2</sub> ratios</b>	<b>Control group (N=26)</b>	<b>BEVA group (N=26)</b>	<b><i>p</i> value†</b>
<b>All</b>			
Baseline	197.5 (135.0,295.0)	196.5 (145.0,273.0)	0.805
Difference between day 1 and baseline	-23.0 (-71.0,5.0)*	50.5 (4.0,119.0)	<0.001
Difference between day 7 and baseline	-28.5 (-65.0,62.0)	111.0 (85.0,165.0)†	<0.001
<b>Chinese population</b>			
	<b>(N=12)</b>	<b>(N=12)</b>	
Baseline	267.5 (156.5,368.5)	275.0 (231.0,339.5)	0.686
Difference between day 1 and baseline	-33.5 (-86.0,88.0)	68.5 (7.5,139.0)	0.019
Difference between day 7 and baseline	64.5 (-37.5,134.5)	93.0 (-9.0,201.0)†	0.518
<b>Italian population</b>			
	<b>(N=14)</b>	<b>(N=14)</b>	
Baseline	181.5 (135.0,230.0)	151.5 (140.0,181.0)	0.597
Difference between day 1 and baseline	-21.5 (-43.5,-2.0)*	35.5 (4.0,95.0)	0.001
Difference between day 7 and baseline	-37.5 (-74.0,-24.0)	120.5 (90.0,165.0)	<0.001

\*Two data of day 1 PaO<sub>2</sub>/FiO<sub>2</sub> were absent in Italian control group; †One datum of day 7 PaO<sub>2</sub>/FiO<sub>2</sub> was absent because of discharge in BEVA group as mentioned above.

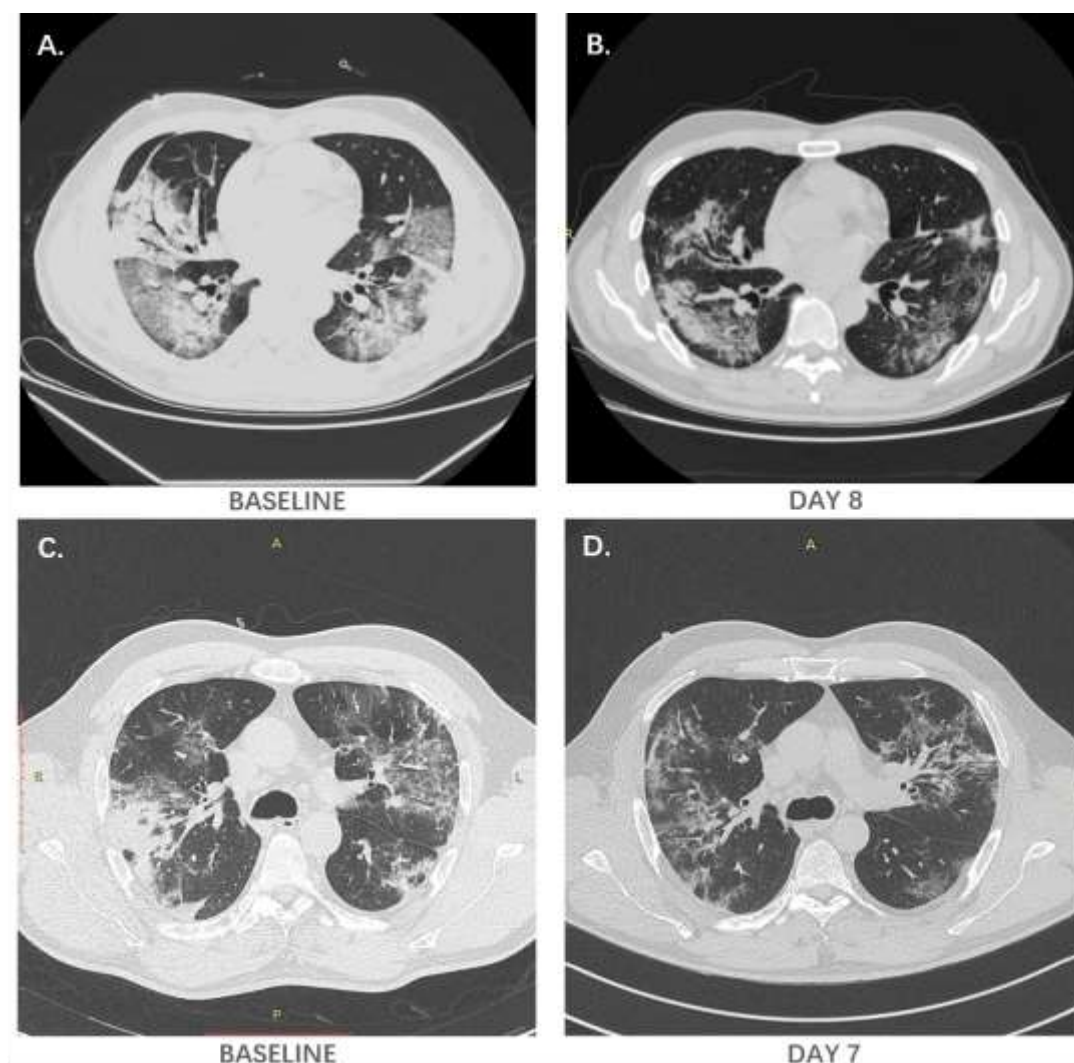
† Wilcoxon signed-rank test.

## FIGURES LEGENDS



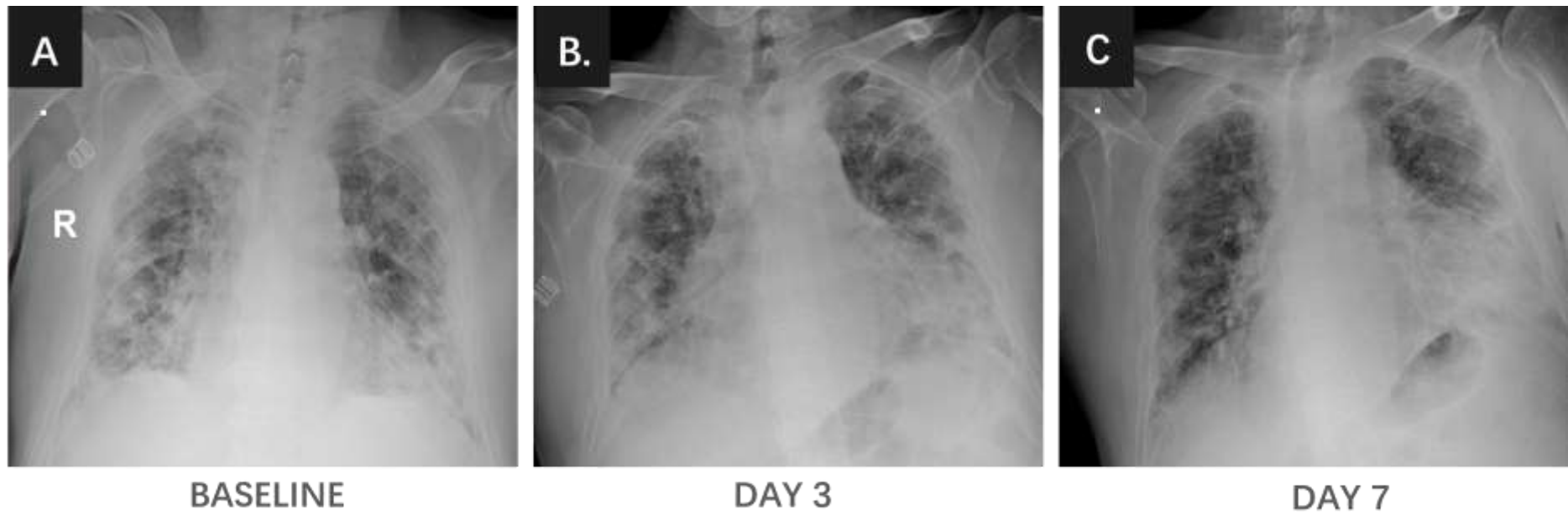
**Figure 1. CONSORT flow diagram.**



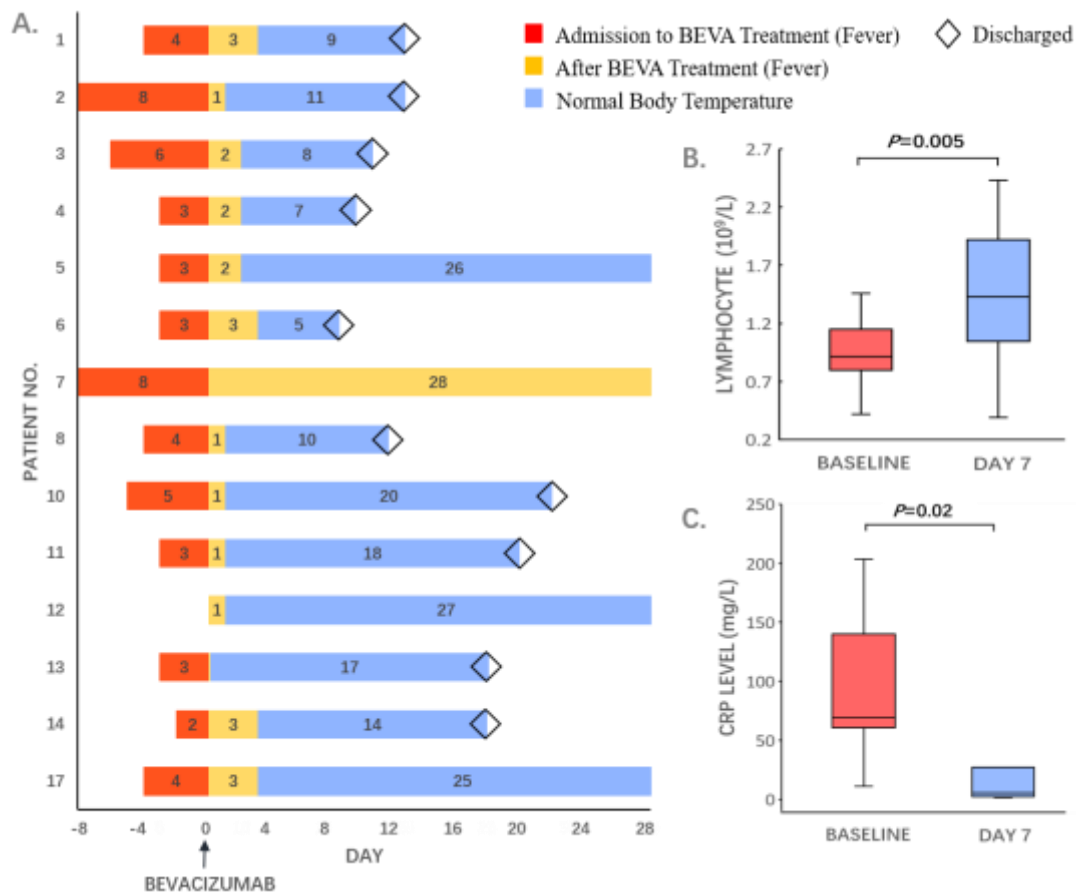


**Figure 3. Representative chest CT images.** A. and B. Typical chest CT images of a Chinese patient with severe Covid-19 who received bevacizumab at day 8 relative to the prior treatment baseline. C. and D. Typical chest CT images of an Italian patient with severe Covid-19 who received bevacizumab at day 7 relative to the prior treatment baseline.





**Figure 4. Representative chest X-ray images.** A., B. and C. Chest X-ray images of an Italian patient with severe Covid-19 who received bevacizumab treatment at days 3 and 7 relative the prior treatment baseline.



**Figure 5. Changes in fever symptom, lymphocyte counts, and inflammation markers of individual patients.** **A.** Day 0 marks bevacizumab treatment time point. Final fever statuses are on the discharge date or at the end of 28-day follow-up. Red color columns indicate the fever status prior to bevacizumab treatment. Orange color marks the fever duration after bevacizumab treatment. Blue color represents post-bevacizumab normal body temperature. Diamonds indicate the discharged patients. Patient numbers match the patient numbers in Fig. 2. **B.** Lymphocyte counts at day 7 after bevacizumab treatment relative to the baseline ( $p<0.005$ ). Lymphocyte counts were analyzed from 10 Italian patients and 4 Chinese patients. **C.** C-reactive protein (CRP) analysed at day 7 compared to the baseline ( $p<0.02$ ). CRP values were collected from 8 Italian patients and 1 Chinese patient.