

1 **Research Article**

2 **Manuscript Title:** Use of a humanized anti-CD6 monoclonal antibody (itolizumab) in elderly  
3 patients with moderate COVID-19

4 **Authors:** Yayquier Díaz<sup>a</sup>, Mayra Ramos-Suzarte<sup>b</sup>, Yordanis Martín<sup>a</sup>, Néstor Antonio  
5 Calderón<sup>a</sup>, William Santiago<sup>a</sup>, Orlando Viñet<sup>a</sup>, Yulieski La O<sup>a</sup>, Jorge Pérez, Augusto  
6 Oyarzábal<sup>a</sup>, Yoan Pérez<sup>a</sup>, Geidy Lorenzo<sup>b</sup>, Meylan Cepeda<sup>b</sup>, Danay Saavedra<sup>b</sup>, Zaima  
7 Mazorra<sup>b</sup>, Daymys Estevez<sup>b</sup>, Patricia Lorenzo-Luaces<sup>b</sup>, Carmen Valenzuela<sup>b</sup>, Armando  
8 Caballero<sup>c</sup>, Kalet Leon<sup>b</sup>, Tania Crombet<sup>b</sup> and Carlos Jorge Hidalgo<sup>a</sup>

9 Yayquier Díaz and Mayra Ramos-Suzarte have contributed equally to this article

10 <sup>a</sup> Manuel Fajardo University Hospital, Santa Clara, Villa Clara, Cuba

11 <sup>b</sup> Center of Molecular Immunology, Playa, La Habana, Cuba

12 <sup>c</sup> Arnaldo Milian Castro University Hospital. Santa Clara, Villa Clara. Cuba

13 **Short Title:** Itolizumab in moderately ill, elderly COVID-19 patients

14 **Corresponding Author:** Mayra Ramos Suzarte PhD. Prof.

15 Clinical Research Direction  
16 Center of Molecular Immunology  
17 Ave 216, Esq. 15. Atabey.  
18 Playa, Havana, 11600. Cuba  
19 Phone number: +5372143146 +5353310380  
20 [mayra@cim.sld.cu](mailto:mayra@cim.sld.cu)

21 ORCID 0000-0002-9058-3224

22 **Number of Tables:** 1

23 **Number of Figures:** 2

24 **Word count:** 3085

25 **Keywords:** Itolizumab, elderly, COVID-19, SARS-CoV-2, immunomodulatory drugs

26 **Abstract**

27 **Introduction:** The Severe Acute Respiratory Syndrome Coronavirus 2 (SARS-CoV-2) has  
28 caused a recent outbreak of Coronavirus Disease (COVID-19). In Cuba, the first case of  
29 COVID-19 was reported on March 11. Elderly with multiple comorbidities are particularly  
30 susceptible to adverse clinical outcomes in the course of SARS CoV-2 infection. During the  
31 outbreak, a local transmission event took place in a nursing home in Villa Clara province,  
32 Cuba, in which nineteen elderly residents were positive for SARS-CoV-2. **Methods:** Based  
33 on the increased susceptibility to viral-induced cytokine release syndrome inducing  
34 respiratory and systemic complications in this population, the patients were included in an  
35 expanded access clinical trial to receive itolizumab, an anti-CD6 monoclonal antibody.  
36 **Results:** All the patients had underlying medical conditions. The product was well tolerated.  
37 After the first dose, the course of the disease was favorable and 18 out of 19 (94.7%) patients  
38 were discharged clinically recovered with negative RT-PCR at 13 days (median). One dose of  
39 itolizumab, circulating IL-6 decreased in the first 24-48 hours in patients with high baseline  
40 values, whereas in patients with low levels, this concentration remained over low values. To  
41 preliminary assess the effect of itolizumab, a control group was selected among the Cuban  
42 COVID-19 patients, which did not receive immunomodulatory therapy. Control subjects  
43 were well-matched regarding age, comorbidities and severity of the disease. Every three  
44 moderately ill patients treated with itolizumab, one admission in intensive care unit (ICU)  
45 was prevented. **Discussion/Conclusion:** Itolizumab was well tolerated. Its effect is associated  
46 with a reduction and controlling IL-6 serum levels. Moreover, treated patients had a favorable  
47 clinical outcome, considering their poor prognosis. This treatment is associated significantly  
48 with a decrease the risk to be admitted in ICU and reduced 10 times the risk of death. This  
49 study corroborates that the timely use of itolizumab, in combination with other antiviral and  
50 anticoagulant therapies, is associated with a reduction the COVID-19 disease worsening and  
51 mortality. The humanized antibody itolizumab emerges as a therapeutic alternative for  
52 patients with COVID-19 and suggests its possible use in patients with cytokine release  
53 syndrome from other pathologies.

54

55

56

57

58

59 *Manuscript Title:* Use of a humanized anti-CD6 monoclonal antibody (itolizumab) in elderly  
60 patients with moderate COVID-19

## 61 **Introduction**

62 From December 2019, the first cases of coronavirus disease 2019 (COVID 19) pneumonia  
63 began to be registered in the Chinese city of Wuhan. A month later, the World Health  
64 Organization (WHO) confirms that the cause of this pneumonia is the severe acute  
65 respiratory syndrome coronavirus 2 (SARS-CoV-2). To date (June 23, 2020), 185 countries  
66 are reported with cases of COVID-19 and it amounts to 9 million 063,264 confirmed cases,  
67 471 681 deaths for a fatality of 5.20%. In the Americas region, 4 million 512,775 confirmed  
68 cases are reported (49.79% of the total reported cases in the world) with a fatality of 5.02%.  
69 The first positive case in Cuba was reported on March 11 and to date, 2319 positive cases  
70 have accumulated, with 85 deaths reported (June 25, 2020) [1].

71 COVID-19 can range from asymptomatic to critical disease. Many patients, mostly younger,  
72 are asymptomatic or minimally symptomatic. Elderly with pre-existing comorbidities have  
73 been at higher risk of severe disease and fatal outcome [2]. Changes occurring in the immune  
74 system with increasing age, termed immunosenescence and the state of chronic, low-grade  
75 inflammation known as inflammaging, characterized the immune system in the elderly. Both  
76 processes suggest the origin of most of the comorbidities of the older adults and its  
77 susceptibility to suffer cancer, chronic inflammatory diseases and new infections [3].

78 SARS-CoV-2 infection is reported to trigger a pro-inflammatory response characterized by  
79 high levels of cytokines, including IL-6 and overexpression of other growth factors such as  
80 fibroblast growth factor (FGF), the granulocyte macrophage colony stimulating factor (GM-  
81 CSF), tumor necrosis factor (TNF $\alpha$ ) and vascular endothelial growth factor (VEGF) among  
82 others. In some vulnerable patients, the disease might worsen up to admission into the  
83 intensive care unit (ICU), if appropriate therapy is not used. Patients at this stage show high  
84 levels of pro-inflammatory cytokines. Particularly, many authors have found that IL-6 levels  
85 are directly correlated with increased mortality and inversely with lymphocyte count. Based  
86 on these findings it has been suggested that cytokine release syndrome may hinder the  
87 adaptive immune response against SARS-CoV-2 infection [4, 5].

88 High number of COVID-19 associated deaths has been seen in the nursing home sector. It is

89 suggested that elderly patients residing in long-term care facilities (LTCFs) could be more  
90 vulnerable to SARS-CoV-2 infection becoming a population with higher risk for COVID-19-  
91 associated morbidity and mortality [6].

92 The Center of Molecular Immunology developed the humanized monoclonal antibody (MAb)  
93 itolizumab (CIMAREG) capable of binding to a region in the distal membrane domain of  
94 human CD6 (domain 1) [7]. The *in vitro* characterization of its mechanism of action revealed  
95 that it reduces the expression of intracellular proteins involved in activation and inhibits the  
96 proliferation of T cells. The effect is associated with the reduction of activation signals and  
97 the production of pro-inflammatory cytokines (interferon- $\gamma$  (IFN-  $\gamma$ ), interleukin (IL)-6 and  
98 tumor necrosis factor alpha (TNF- $\alpha$ )) [8]. Studies in blood and tissue samples from patients  
99 with severe psoriasis treated with this MAb, showed that the treatment reduced the  
100 proliferation capacity of T cells and the number of T cells producing IFN-  $\gamma$ . In addition, the  
101 reduction of serum IL-6 and IFN- $\gamma$  levels was observed [9, 10].

102 A local transmission event occurred in a Cuban's nursing home, in which several patients  
103 were positive for SARS-CoV-2. Nineteen of these patients were admitted to a hospital at  
104 moderate stage of the disease. All the patients were older than 64 years and the majority of  
105 them suffered hypertension and/or other comorbidities, which are risk factors associated with  
106 severity and fatal COVID-19 outcome. Based on the immunoregulatory action of itolizumab  
107 and the safety profile verified in previous severe COVID-19 patients, its use was proposed in  
108 the moderately ill elderly patients from the nursing home.

109 In this study we characterized the clinical features and outcomes of these nineteen elderly  
110 patients treated with itolizumab combined with anti-viral therapies.

## 111 **Materials and Methods**

### 112 **Patients**

113 Nineteen patients confirmed as SARS-CoV-2 positive by real-time transcriptase polymerase  
114 chain reaction (RT-PCR), admitted from the Cuban's nursing home, were enrolled in an  
115 open, multicenter expanded access clinical trial (RPCEC00000311(VICTORIA)) to be  
116 treated with the humanized MAb itolizumab. The Ethics Committee for Clinical Research in  
117 the hospital and Cuban Regulatory Agency (CECMED) approved the trial. The study  
118 complied with the Good Clinical Practices and the precepts established in the Declaration of  
119 the Helsinki World Medical Association. All patients met the inclusion criteria described in

120 the protocol (<http://rpcec.sld.cu/trials/RPCEC00000311-Eg.>) and signed the informed  
121 consent.

## 122 **Treatment**

123 Patients received standard treatments (lopinavir/ritonavir (kaletra), chloroquine, prophylactic  
124 antibiotics, interferon alpha ( $\alpha$ ) 2B and low-molecular-weight heparin (LMWH)) included in  
125 the institutional protocol for COVID-19 [11].

126 In addition, patients received a first intravenous dose of 200 mg of a humanized Mab  
127 itolizumab (8 vials). Some patients received a second dose (200 mg), considering their  
128 clinical evolution and the physician criteria. Itolizumab-associated adverse events (AE) were  
129 reported. Their classification was performed according to the NIH-CTC toxicity criteria,  
130 version 5.0.

## 131 **Laboratory examination**

132 Laboratory results included blood routine, leucocyte subsets and blood biochemical  
133 parameters. The level of inflammatory cytokines was measured using human Quantikine  
134 ELISA Kits from R&D Systems (Minneapolis, USA): Human IL-6 Quantikine ELISA Kit  
135 (Cat# S6050).

## 136 **Statistical Analysis**

137 Continuous variables were expressed as mean and standard deviations or median and  
138 interquartile ranges (depending of the distribution of each variable). Wilcoxon rank sum test  
139 were applied to continuous variables, and chi-square or Fisher's exact test were used for  
140 categorical variables. Type 1 error of 0.05 was used. To preliminary assess the effect of  
141 itolizumab, a control group was selected among the Cuban COVID-19 patients, that did not  
142 receive immunomodulatory therapy. Controls were treated with lopinavir/ritonavir,  
143 chloroquine, interferon  $\alpha$ 2B and LMWH. Control subjects were well-matched regarding age,  
144 comorbidities and severity of the disease. Odds ratio for disease progression and mortality  
145 was estimated for itolizumab vs control. The number of patients needed to treat (NNT) to  
146 prevent an additional poor outcome and the absolute risk reduction were also calculated. The  
147 analysis was performed using SPSS 25.0 software.

## 148 **Results**

### 149 **Baseline characteristics of COVID-19 elderly patients**

150 The median age was 79 years (64 to 100 years old); 63.2% were female and 68.4% were  
151 white skin. All the patients had chronic underlying health conditions. The most frequent  
152 comorbidities were hypertension (73.7%), dementia (57.9%), malnutrition (52.6%), cardiac  
153 disease (42.1%), diabetes mellitus (31.6%) and chronic obstructive pulmonary disease  
154 (COPD) (26.3%). The majority of them suffered more than one comorbidity (Table 1).

155 Upon admission, 42.1% of these elderly patients required oxygen therapy due to respiratory  
156 function worsening. In addition, 52.6% had fever, 47.3% had cough and 42.1% showed signs  
157 and symptoms of dehydration. Other symptoms included dyspnea (36.8%) and diarrhea  
158 (26.3%). Regarding the severity of the disease, they were classified as moderately ill patients.

159 Concerning hematological and biochemical parameters, 16.7% of patients had leukocyte  
160 levels below the normal range. Lymphocytes were below the normal range in 29.4% and  
161 5.6% had low counts of platelets. Aspartate aminotransferase (ASAT) was above the normal  
162 values in 13.3% and D-dimer was increased in 84.6% of the patients.

#### 163 **Treatment with an anti-CD6 monoclonal antibody (itolizumab)**

164 Immediately upon confirmation of the presence of SARS-CoV-2, the patients received the  
165 established institutional COVID-19 treatment protocol [11]. All the patients received  
166 lopinavir/ritonavir (kaletra), 94.7% had chloroquine, 68.4% received interferon  $\alpha$ 2B and  
167 89.5% received LMWH. Additionally, 63.2% got vitamins and 31.6% antibiotics. Three  
168 patients (15.8%) were treated with recombinant human erythropoietin at a cytoprotective  
169 dose (Table 1).

170 All the patients received one dose of the antibody, while 89.5% received two. The median  
171 time between the onset of symptoms and itolizumab was 1 day. The time between doses,  
172 ranged from 1 to 7 days, with an overall median of two days. In this study, 94.7% of the  
173 patients were discharged, with a median hospital stay of 13 days, ranging from 3 to 40 days.  
174 All of them were negative for SARS-COV2 at the moment of discharge. Only one death-  
175 event took place, in a patient with several comorbidities (hypertension, coronary artery  
176 disease, dementia and malnutrition). In it, daily electrocardiograms showed a left bundle  
177 branch block without sings of acute ischemia and death was by pulmonary  
178 thromboembolism. Only one AE related to the administration of the itolizumab was reported.  
179 The AE consisted on chills and occurred immediately after the first administration, lasting for

180 minutes. The AE was mild intensity and did not imply changes in the administration of the  
181 antibody.

182 Vital signs were evaluated after itolizumab administration during the hospital stay. After 7  
183 days of itolizumab treatment, only two patients required oxygen therapy (10.5%) and this  
184 difference had statistically significant compared to baseline requirements (42.1% vs 10.5%,  
185  $p=0.031$ ,  $\chi^2$  (McNemar) test).

186 IL-6 serum levels were measured before and 24-48 hours after the treatment in twelve elderly  
187 patients. The median of pretreatment concentration was 23.9 pg/mL and the median of IL-6  
188 levels 48 hours after the treatment was 25.9 pg/mL. Therefore, no significant changes were  
189 detected. In a previous work, the application of receiver operating characteristic (ROC) curve  
190 selected the cut-off of IL-6 levels on 28.3 pg/mL, to establish the association between baseline  
191 IL-6 concentration and severity of illness (unpublished data). When analyzing the IL-6 serum  
192 values of elderly patients regarding the selected cut-off, five patients had baseline levels  
193 above 28.3 pg/mL. Four out of five patients reduced the cytokine concentrations 24-48 hours  
194 after the itolizumab. In one patient, the levels remained similar (shown in Fig. 1).

195 Among the seven patients with baseline levels below the selected cut-off, in six patients the  
196 circulating IL-6 did not increase over 28.3 pg/mL 24-48 hours after the administration. Only  
197 in one patient, the IL-6 concentration increased (shown in Fig. 1). The magnitude of change  
198 of IL-6 among the patients with concentrations above the cutoff has a median of reduction of  
199 48.6 pg/mL. The median of change in IL-6 concentration among the patients with baseline  
200 levels below 28.3 pg/mL, was 2.2 pg/mL.

### 201 **Clinical outcome of itolizumab-treated patients**

202 A comparison of the clinical evolution between the cohort from the nursing home (n=19) and  
203 a group of Cuban COVID-19 patients with similar baseline conditions (control group), was  
204 performed. Control patients were defined as COVID-19-confirmed patients, reported by the  
205 Cuban Ministry of Public Health. Among them, patients with similar baseline conditions to  
206 our cohort: at least one comorbidity (hypertension, diabetes mellitus, cardiac disease, cancer,  
207 chronic kidney disease, obesity, malnutrition or COPD), 64 years or older and who were not  
208 included in other COVID-19 clinical trials, were selected (n=53 patients). Control patients  
209 received the rest of the Cuban protocol drugs described above. The groups were  
210 homogeneous in terms of demographic characteristics and significant comorbidities, except  
211 for malnutrition, which occurs only in the itolizumab treated group ( $p=0.000$ , test  $\chi^2$ ).

212 Analyzing control and itolizumab-treated patients with two or more comorbidities, a

213 significant dependence between itolizumab use and admission in intensive care unit (ICU) or  
214 mortality, was detected. Every three moderately ill patients treated with itolizumab, one  
215 admission in ICU was prevented ( $p=0.042$ , test  $\chi^2$ , NNT: 3.12). Additionally, treatment with  
216 the Mab is associated with a reduction the risk of death 10 times as compared with the control  
217 group ( $1/0.10=10$ ). Every three moderately ill patients treated with itolizumab, one death was  
218 prevented ( $p=0.020$ , test  $\chi^2$ , NNT: 2.93) (shown in Fig. 2).

219

## 220 **Discussion**

221 Elderly patients are particularly susceptible to adverse clinical outcomes in the course of  
222 SARS CoV-2 infection. Older adults with age-related diseases are more susceptible to viral-  
223 induced cytokine storm resulting in respiratory failure, multisystem damage and fatal  
224 outcome [12].

225 COVID-19, caused by the new coronavirus SARS-CoV-2, become a global health emergency  
226 according to the WHO since March 11, 2020, has led the international scientific and medical  
227 community to search for adequate therapies that would allow controlling it, avoiding  
228 mortality and the damages associated with it [12].

229 In April 2020, an episode of massive SARS CoV-2 transmission occurred in the Nursing  
230 Home in Villa Clara province, Cuba. Nineteen residents were infected by a visitor, who  
231 turned out to be positive at SARS CoV-2 days after having made a visit to that facility.  
232 Residents and health care personnel at long-term care facilities are at risk for COVID-19  
233 transmission and residents are particularly at risk of severe outcomes because they are  
234 predominantly at advanced ages and have commonly underlying medical conditions [6].

235 After the appearance of COVID 19- related symptoms, all the elderly were admitted into the  
236 Hospital. They immediately received the treatment-protocol established in the country for this  
237 disease [11].

238 All the patients in our cohort had underlying medical conditions. The most frequent were  
239 hypertension, dementia, malnutrition, cardiac disease, diabetes mellitus and COPD. The  
240 median age was 79 years old. People of any age with certain comorbidities such as  
241 hypertension, COPD, serious heart conditions, diabetes mellitus and immunocompromised  
242 state, especially elderly, are at increased risk for severe illness from COVID-19 [13]. Fever,  
243 cough, dyspnea, signs of dehydration and diarrhea were the most frequent symptoms on  
244 admission. They were classified as moderately ill patients. Assessment and treatment is



245 challenging for elderly patients diagnosed with COVID-19. An individualized approach  
246 should be offered to older adults properly analyzing the beneficial effects and the risks of  
247 therapeutic decisions [12].

248 Based on the increased susceptibility to viral-induced cytokine storm inducing respiratory  
249 and systemic complications in this type of population [12], the patients were included in an  
250 expanded access clinical trial to receive itolizumab, an anti-CD6 monoclonal antibody.  
251 Itolizumab is a first-in class antagonistic Mab that selectively targets the CD6-ALCAM  
252 pathway, reducing the activation, proliferation and differentiation of T cells into pathogenic  
253 effector T cells and leading to a decrease of pro-inflammatory cytokine production [8].

254 The product was well tolerated since only one mild adverse reaction was reported after the  
255 first infusion in one subject. In general, after the first dose, the course of the disease was  
256 favorable, only two patients required oxygen therapy after the treatment and 94.7% of the  
257 patients were discharged with negative RT-PCR results at 14 days. This outcome suggests  
258 that although itolizumab is an immunomodulatory drug, it did not interfere with the clearance  
259 of SARS-CoV-2 virus.

260 Inflammation arises as a critical process in SARS-CoV-2-infected patients. While a strong  
261 immune response may contain the infection, previous studies have reported worse outcomes  
262 related to the presence of an excessive number of cytokines and inflammatory soluble factors  
263 [14]. Itolizumab is associated with a reduction or stabilized IL-6 levels in these elderly  
264 patients in the first 24-48 hours of administration. In four out of five patients with IL-6  
265 baseline concentrations above the pre-establish cutoff for severity (28.3 pg/mL) (unpublished  
266 data), the levels decreased after Mab administration. In one patient, the levels remained  
267 similar. Regarding patients with IL-6 baseline levels below 28.3 pg/mL, only one increased  
268 the IL-6 values; the rest remained under this cut-off 24-48 hours after the administration.  
269 Therefore, these findings suggest that the reduction of serum IL-6 levels in patients with high  
270 baseline concentrations, and its stabilization over low values is an effect associated of this  
271 monoclonal antibody.

272 Modulation of the severe inflammatory state in patients with COVID-19, consist in a relevant  
273 strategy to limit the severity of pulmonary and systemic complications. This approach could  
274 successfully reduce the needs for intensive care support and mechanical ventilation, and  
275 eventually decrease mortality [15]. When comparing our cohort of COVID-19 itolizumab-  
276 treated patients with a control group of Cuban COVID-19 patients, with similar

277 characteristics (age, comorbidities and similar treatment except for itolizumab or another  
278 immunomodulatory agent), itolizumab emerged as therapy associated on preventing the  
279 severity of the disease. This treatment is associated significantly with a decrease the risk to be  
280 admitted in ICU and reduced 10 times the risk of death.

281 This study has some limitations regarding the short kinetic of IL-6 levels and the limited  
282 follow up of the patients, long-term outcomes of them are unknown. Nevertheless, it shows  
283 the effect of itolizumab associated with a reduction and controlling IL-6 serum levels.  
284 Moreover, itolizumab treated patients had a favorable clinical outcome, considering their  
285 poor prognosis associated with old age and comorbidities, including nutrition deficit.

286 In conclusion, this study corroborates that the timely use of itolizumab, in combination with  
287 other antiviral and anticoagulant therapies, is associated with a reduction the COVID-19  
288 disease worsening and mortality. The humanized antibody itolizumab emerges as a  
289 therapeutic alternative for patients with COVID-19 and suggests its possible use in patients  
290 with cytokine release syndrome from other pathologies.

## 291 **Statements**

## 292 **Acknowledgement**

293 The authors are extremely thankful to our patients and their relatives and to the research  
294 teams from the Manuel Fajardo Hospital and from Center of Molecular Immunology.

## 295 **Statement of Ethics**

296 The Ethics Committee approved the clinical trial. The Cuban Regulatory Agency (CECMED)  
297 also approved the trial. The study complied with the Good Clinical Practices and the precepts  
298 established in the Declaration of the Helsinki World Medical Association. All patients signed  
299 the informed consent.

## 300 **Conflict of Interest Statement**

301 The authors have no conflict of interest to declare

## 302 **Funding Sources**

303 This study did not receive any financial support.

## 304 **Author Contributions**

305 (1, 3, 4) Yayquier Díaz, Mayra Ramos-Suzarte, Carlos Jorge Hidalgo, Armando Caballero,

306 Kalet Leon, Tania Crombet, Yordanis Martín, Néstor Antonio Calderón, William Santiago,  
307 Orlando Viñet, Yulieski La O, Jorge Pérez, Augusto Oyarzábal, Yoan Pérez, Geidy Lorenzo,  
308 Meylan Cepeda Portales, Danay Saavedra, Zaima Mazorra, Daymys Estevez, Patricia  
309 Lorenzo-Luaces, Carmen Valenzuela  
310 (2) Mayra Ramos-Suzarte, Tania Crombet, Danay Saavedra, Zaima Mazorra, Carmen  
311 Valenzuela, Yayquier Díaz, Carlos Jorge Hidalgo.

312

## 313 **References**

- 314 1. Ministerio de Salud Pública [Internet]. Cuba: Parte de cierre del día 25 de junio a las 12 de la  
315 noche [cited 2020 Jun 26]. Available from: [https://salud.msp.gob.cu/parte-de-cierre-del-dia-25-de-](https://salud.msp.gob.cu/parte-de-cierre-del-dia-25-de-junio-a-las-12-de-la-noche/)  
316 [junio-a-las-12-de-la-noche/](https://salud.msp.gob.cu/parte-de-cierre-del-dia-25-de-junio-a-las-12-de-la-noche/).
- 317 2. Wu Z, McGoogan JM. Characteristics of and Important Lessons From the Coronavirus Disease  
318 2019 (COVID-19) Outbreak in China: Summary of a Report of 72314 Cases From the Chinese Center  
319 for Disease Control and Prevention. *JAMA*. 2020 Feb 24.
- 320 3. Fulop T, Larbi A, Dupuis G, Le Page A, Frost EH, Cohen AA, et al. Immunosenescence and  
321 Inflamm-Aging As Two Sides of the Same Coin: Friends or Foes? *Front Immunol*. 2017;8:1960.
- 322 4. Li G, Fan Y, Lai Y, Han T, Li Z, Zhou P, et al. Coronavirus infections and immune responses. *J*  
323 *Med Virol*. 2020 Apr;92(4):424-32.
- 324 5. Yao X, Ye F, Zhang M, Cui C, Huang B, Niu P, et al. In Vitro Antiviral Activity and Projection of  
325 Optimized Dosing Design of Hydroxychloroquine for the Treatment of Severe Acute Respiratory  
326 Syndrome Coronavirus 2 (SARS-CoV-2). *Clin Infect Dis*. 2020 Mar 9.
- 327 6. McMichael TM, Currie DW, Clark S, Pogosjans S, Kay M, Schwartz NG, et al. Epidemiology of  
328 Covid-19 in a Long-Term Care Facility in King County, Washington. *N Engl J Med*. 2020 Mar 27.
- 329 7. Alonso R, Huerta V, de Leon J, Piedra P, Puchades Y, Guirola O, et al. Towards the definition  
330 of a chimpanzee and human conserved CD6 domain 1 epitope recognized by T1 monoclonal  
331 antibody. *Hybridoma (Larchmt)*. 2008 Aug;27(4):291-301.
- 332 8. Nair P, Melarkode R, Rajkumar D, Montero E. CD6 synergistic co-stimulation promoting  
333 proinflammatory response is modulated without interfering with the activated leucocyte cell  
334 adhesion molecule interaction. *Clin Exp Immunol*. 2010 Oct;162(1):116-30.
- 335 9. Rodriguez PC, Torres-Moya R, Reyes G, Molinero C, Prada D, Lopez AM, et al. A clinical  
336 exploratory study with itolizumab, an anti-CD6 monoclonal antibody, in patients with rheumatoid  
337 arthritis. *Results Immunol*. 2012;2:204-11.
- 338 10. Krupashankar DS, Dogra S, Kura M, Saraswat A, Budamakuntla L, Sumathy TK, et al. Efficacy  
339 and safety of itolizumab, a novel anti-CD6 monoclonal antibody, in patients with moderate to severe  
340 chronic plaque psoriasis: results of a double-blind, randomized, placebo-controlled, phase-III study. *J*  
341 *Am Acad Dermatol*. 2014 Sep;71(3):484-92.
- 342 11. Ministerio de Salud Pública [Internet]. Cuba: Protocolo de Actuación Nacional para la COVID-  
343 19 [cited 2020 Jun 26]. Available from:  
344 [https://files.sld.cu/editorhome/files/2020/05/MINSAP\\_Protocolo-de-Actuaci%C3%B3n-Nacional-](https://files.sld.cu/editorhome/files/2020/05/MINSAP_Protocolo-de-Actuaci%C3%B3n-Nacional-para-la-COVID-19_versi%C3%B3n-1.4_mayo-2020.pdf)  
345 [para-la-COVID-19\\_versi%C3%B3n-1.4\\_mayo-2020.pdf](https://files.sld.cu/editorhome/files/2020/05/MINSAP_Protocolo-de-Actuaci%C3%B3n-Nacional-para-la-COVID-19_versi%C3%B3n-1.4_mayo-2020.pdf).
- 346 12. Perrotta F, Corbi G, Mazzeo G, Boccia M, Aronne L, D'Agnano V, et al. COVID-19 and the  
347 elderly: insights into pathogenesis and clinical decision-making. *Aging Clin Exp Res*. 2020 Jun 16.
- 348 13. Yang X, Yu Y, Xu J, Shu H, Xia J, Liu H, et al. Clinical course and outcomes of critically ill  
349 patients with SARS-CoV-2 pneumonia in Wuhan, China: a single-centered, retrospective,  
350 observational study. *Lancet Respir Med*. 2020 May;8(5):475-81.
- 351 14. Zhou F, Yu T, Du R, Fan G, Liu Y, Liu Z, et al. Clinical course and risk factors for mortality of  
352 adult inpatients with COVID-19 in Wuhan, China: a retrospective cohort study. *Lancet*. 2020 Mar  
353 28;395(10229):1054-62.

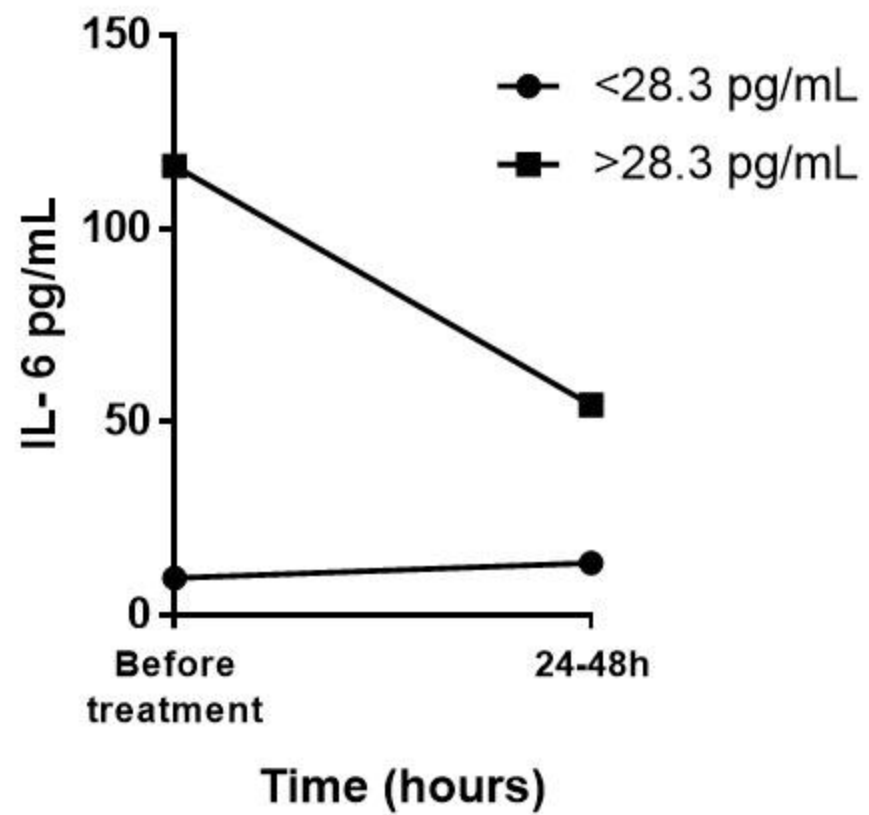
354 15. Arnaldez FI, O'Day SJ, Drake CG, Fox BA, Fu B, Urba WJ, et al. The Society for Immunotherapy  
355 of Cancer perspective on regulation of interleukin-6 signaling in COVID-19-related systemic  
356 inflammatory response. *J Immunother Cancer*. 2020 May;8(1).

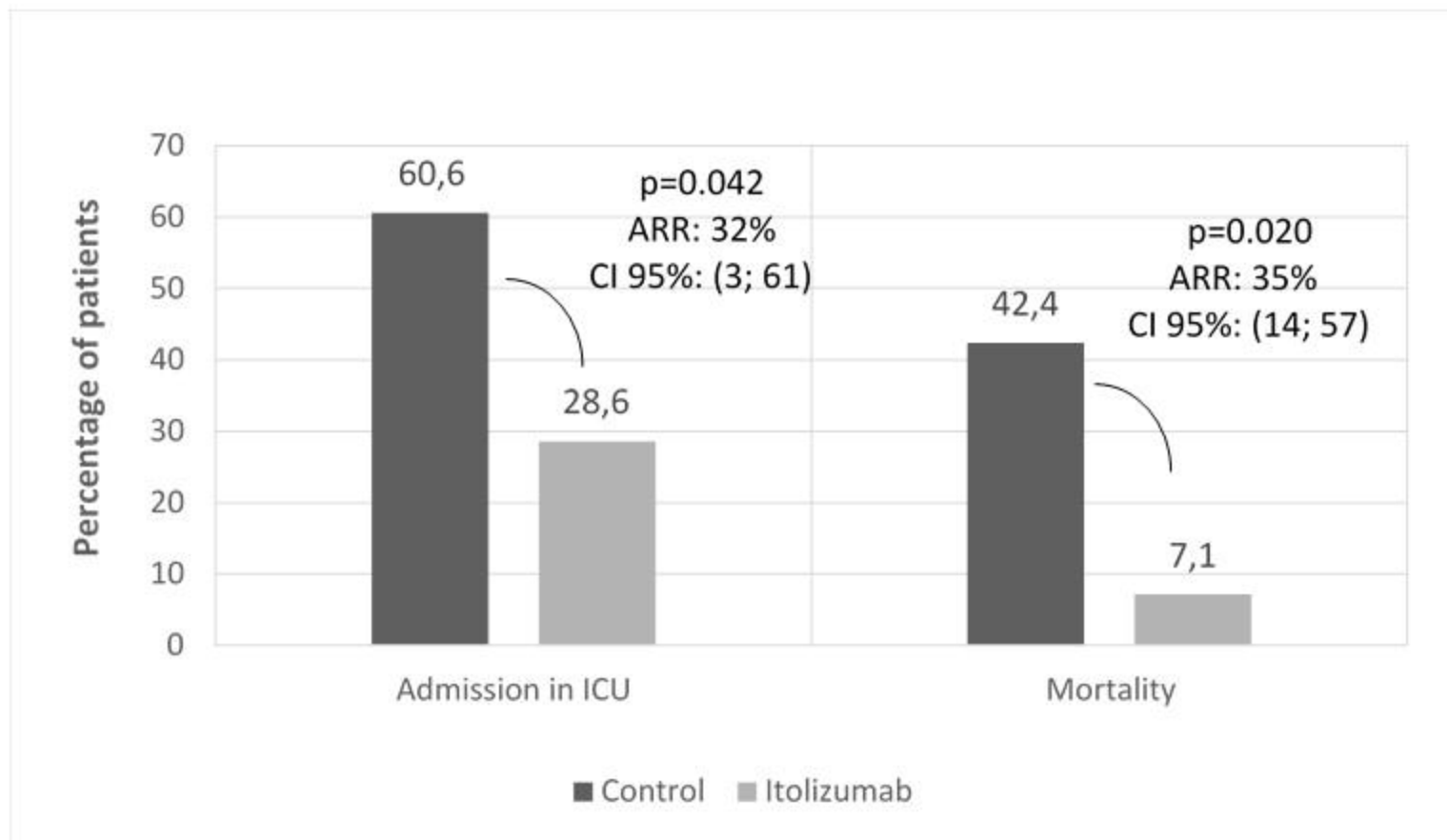
357

## 358 **Figure Legends**

359 **Fig. 1. Median of IL-6 concentration in the serum of COVID-19 patients before and 24-**  
360 **48 hours after itolizumab treatment.** The patients were divided according to the pre-  
361 established cut-off of IL-6 levels (28.3 pg/mL).

362 **Fig. 2. Clinical outcome of itolizumab-treated and control patients.** Frequency of patients  
363 admitted in ICU and mortality. Odds ratio for disease progression and mortality, NNT to  
364 prevent an additional poor outcome (admission in the ICU, death) and the ARR were  
365 calculated for itolizumab and control patients. Difference were considered significant if  $p <$   
366 0.05. \*ARR: Absolute Risk Reduction (%);\*\* NNT: Number needed to treat. ICU: intensive  
367 care unit. CI: confident interval.





	Admission in ICU	Mortality
Odds Ratio	0.26 (0.07; 1.01)	0.10 (0.01; 0.89)
NNT**	3 (2; 32)	3 (2; 7)

Table 1. Demography characteristic of elderly COVID-19 patients, treatments and outcomes.

Case No.	Sex	Co-morbidities	Treatments additional	Outcomes
12	F	Hypertension, Ischemic heart disease, Malnutrition, Dementia	itolizumab (2 doses), IFN $\alpha$ 2B, Kaletra, Chloroquine, LMWH, parenteral Vitamins	Alive
13	M	Hypertension, Chronic Obstructive Pulmonary disease, Dementia	itolizumab (2 doses), IFN $\alpha$ 2B, Kaletra, Chloroquine LMWH, parenteral Vitamins	Alive
14	F	Malnutrition, Dementia	itolizumab (2 doses), IFN $\alpha$ 2B, Kaletra, Chloroquine, LMWH, parenteral Vitamins	Alive
15	F	Hypertension, Diabetes Mellitus, Malnutrition, Dementia	itolizumab (2 doses), Kaletra, Chloroquine, LMWH, parenteral Vitamins, Antibiotics.	Alive
16	F	Hypertension, Diabetes Mellitus, Chronic Obstructive Pulmonary disease, Asthma, Malnutrition	itolizumab (2 doses), IFN $\alpha$ 2B F, Kaletra, Chloroquine, LMWH, parenteral Vitamins	Alive
17	M	Hypertension, Diabetes Mellitus, Chronic Obstructive Pulmonary disease, Dementia, Smoker, Hypertensive heart disease	itolizumab (2 doses), IFN $\alpha$ 2B, Kaletra, Chloroquine, LMWH, parenteral Vitamins	Alive
18	F	Dementia, Anemia	itolizumab (2 doses), IFN $\alpha$ 2B, Kaletra, Chloroquine, LMWH, Antibiotics	Alive
19	F	Hypertension, Diabetes Mellitus, Ischemic heart disease, Malnutrition	itolizumab (2 doses), Kaletra, Chloroquine, LMWH, Antibiotics	Alive
20	F	Hypertension, Ischemic heart disease, Heart disease	itolizumab (2 doses), IFN $\alpha$ 2B, Kaletra, Chloroquine, Heparin, Antibiotics	Alive
21	M	Hypertension, Chronic Obstructive Pulmonary disease	itolizumab (2 doses), IFN $\alpha$ 2B, Kaletra, Chloroquine, Heparin, Vitamins	Alive
22	F	Hypertension, Diabetes Mellitus, Ischemic heart disease, Dementia	itolizumab (2 doses), Kaletra, Chloroquine, LMWH, parenteral Vitamins	Alive
24	F	Hypertension, Ischemic heart disease, Malnutrition, Dementia	itolizumab (2 doses), Kaletra, Chloroquine, LMWH, parenteral Vitamins	Alive
25	M	Hypertension, Diabetes Mellitus, Malnutrition, Dementia, amputated	itolizumab (2 doses), IFN $\alpha$ 2B, Kaletra, Chloroquine, LMWH, parenteral Vitamins	Alive
26	F	Hypertension, Ischemic heart disease, Malnutrition, Dementia	itolizumab (2 doses), IFN $\alpha$ 2B, Kaletra, Chloroquine, LMWH, parenteral Vitamins	Death
27	F	Hypertension, Ischemic heart disease, Malnutrition, Dementia	itolizumab (2 doses), Kaletra, Chloroquine, LMWH, parenteral Vitamins	Alive
32	F	Hypertension, Ischemic heart disease, Chronic Obstructive Pulmonary disease, Malnutrition	itolizumab (2 doses), IFN $\alpha$ 2B, Kaletra	Alive
40	M	None	itolizumab (1 dose), IFN $\alpha$ 2B, Kaletra, Chloroquine, Heparin, Erythropoietin	Alive
43	M	Obesity, Smoker, Alcoholism, Post traumatic paraplegia	itolizumab (2 doses), Kaletra, Chloroquine, Heparin, Erythropoietin	Alive
44	M	None	itolizumab (1 dose), IFN $\alpha$ 2B, Kaletra, Chloroquine, Antibiotics, Erythropoietin, Steroids, Omeprazole	Alive

IFN $\alpha$ 2B: Interferon alpha 2B; LMWH: low-molecular-weight heparin; N.A: non available

1 **Research Article**

2 **Manuscript Title:** Use of a humanized anti-CD6 monoclonal antibody (itolizumab) in elderly  
3 patients with moderate COVID-19

4 **Authors:** Yayquier Díaz<sup>a</sup>, Mayra Ramos-Suzarte<sup>b</sup>, Yordanis Martín<sup>a</sup>, Néstor Antonio  
5 Calderón<sup>a</sup>, William Santiago<sup>a</sup>, Orlando Viñet<sup>a</sup>, Yulieski La O<sup>a</sup>, Jorge Pérez, Augusto  
6 Oyarzábal<sup>a</sup>, Yoan Pérez<sup>a</sup>, Geidy Lorenzo<sup>b</sup>, Meylan Cepeda<sup>b</sup>, Danay Saavedra<sup>b</sup>, Zaima  
7 Mazorra<sup>b</sup>, Daymys Estevez<sup>b</sup>, Patricia Lorenzo-Luaces<sup>b</sup>, Carmen Valenzuela<sup>b</sup>, Armando  
8 Caballero<sup>c</sup>, Kalet Leon<sup>b</sup>, Tania Crombet<sup>b</sup> and Carlos Jorge Hidalgo<sup>a</sup>

9 Yayquier Díaz and Mayra Ramos-Suzarte have contributed equally to this article

10 <sup>a</sup> Manuel Fajardo University Hospital, Santa Clara, Villa Clara, Cuba

11 <sup>b</sup> Center of Molecular Immunology, Playa, La Habana, Cuba

12 <sup>c</sup> Arnaldo Milian Castro University Hospital. Santa Clara, Villa Clara. Cuba

13 **Short Title:** Itolizumab in moderately ill, elderly COVID-19 patients

14 **Corresponding Author:** Mayra Ramos Suzarte PhD. Prof.

15 Clinical Research Direction  
16 Center of Molecular Immunology  
17 Ave 216, Esq. 15. Atabey.  
18 Playa, Havana, 11600. Cuba  
19 Phone number: +5372143146 +5353310380  
20 [mayra@cim.sld.cu](mailto:mayra@cim.sld.cu)

21 ORCID 0000-0002-9058-3224

22 **Number of Tables:** 1

23 **Number of Figures:** 2

24 **Word count:** 3085

25 **Keywords:** Itolizumab, elderly, COVID-19, SARS-CoV-2, immunomodulatory drugs



## Abstract

**Introduction:** The Severe Acute Respiratory Syndrome Coronavirus 2 (SARS-CoV-2) has caused a recent outbreak of Coronavirus Disease (COVID-19). In Cuba, the first case of COVID-19 was reported on March 11. Elderly with multiple comorbidities are particularly susceptible to adverse clinical outcomes in the course of SARS CoV-2 infection. During the outbreak, a local transmission event took place in a nursing home in Villa Clara province, Cuba, in which nineteen elderly residents were positive for SARS-CoV-2. **Methods:** Based on the increased susceptibility to viral-induced cytokine release syndrome inducing respiratory and systemic complications in this population, the patients were included in an expanded access clinical trial to receive itolizumab, an anti-CD6 monoclonal antibody. **Results:** All the patients had underlying medical conditions. The product was well tolerated. After the first dose, the course of the disease was favorable and 18 out of 19 (94.7%) patients were discharged clinically recovered with negative RT-PCR at 13 days (median). One dose of itolizumab, circulating IL-6 decreased in the first 24-48 hours in patients with high baseline values, whereas in patients with low levels, this concentration remained over low values. To preliminary assess the effect of itolizumab, a control group was selected among the Cuban COVID-19 patients, which did not receive immunomodulatory therapy. Control subjects were well-matched regarding age, comorbidities and severity of the disease. Every three moderately ill patients treated with itolizumab, one admission in intensive care unit (ICU) was prevented. **Discussion/Conclusion:** Itolizumab was well tolerated. Its effect is associated with a reduction and controlling IL-6 serum levels. Moreover, treated patients had a favorable clinical outcome, considering their poor prognosis. This treatment is associated significantly with a decrease the risk to be admitted in ICU and reduced 10 times the risk of death. This study corroborates that the timely use of itolizumab, in combination with other antiviral and anticoagulant therapies, is associated with a reduction the COVID-19 disease worsening and mortality. The humanized antibody itolizumab emerges as a therapeutic alternative for patients with COVID-19 and suggests its possible use in patients with cytokine release syndrome from other pathologies.