

Air pollution, sociodemographic and health conditions effects on COVID-19 mortality in Colombia: an ecological study

Authors:

Laura A. Rodriguez-Villamizar^{1*}, Luis Carlos Belalcazar-Ceron², Julián Alfredo Fernández-Niño³, Diana Marcela Marín-Pineda⁴, Oscar Alberto Rojas-Sánchez⁵, Lizbeth Alexandra Acuña-Merchán⁶, Nathaly Ramirez-García⁶, Sonia Cecilia Mangones-Matos², Jorge Mario Vargas-Gonzalez², Julián Herrera-Torres², Dayana Milena Agudelo-Castañeda⁷, Juan Gabriel Piñeros Jiménez⁸, Néstor Y. Rojas-Roa², Victor Mauricio Herrera-Galindo⁹

1 Department of Public Health, Universidad Industrial de Santander, Bucaramanga, Colombia

2 School of Engineering, Universidad Nacional de Colombia, Bogotá, Colombia

3 Department of Public Health, Universidad del Norte, Barranquilla, Colombia

4 Research Department, School of Medicine, Universidad Pontificia Bolivariana, Medellín, Colombia

5 Direction of Public Health Research, Instituto Nacional de Salud, Bogotá, Colombia

6 Colombian High Cost Disease Fund, Bogota, Colombia

7 Department of Civil and Environmental Engineering, Universidad del Norte, Barranquilla, Colombia

8 School of Public Health, Universidad de Antioquia, Medellín, Colombia

9 Faculty of Health Sciences, Universidad Autónoma de Bucaramanga, Bucaramanga, Colombia

Correspondence

*Laura A. Rodriguez-Villamizar

Department of Public Health, Universidad Industrial de Santander, Bucaramanga, Colombia
Carrera 32 29-31 Of. 301 Facultad de Salud

E-mail: laurovi@uis.edu.co

Abstract

Objective: To determine the association between chronic exposure to fine particulate matter (PM_{2.5}), sociodemographic aspects, and health conditions and COVID-19 mortality in Colombia.

Methods: Ecological study using data at the municipality level, as units of analysis. COVID-19 data were obtained from official reports up to and including July 17th, 2020. PM_{2.5} long-term exposure was defined as the 2014-2018 average of the estimated concentrations at municipalities obtained from the Copernicus Atmospheric Monitoring Service Reanalysis (CAMSR) model. We fit a logit-negative binomial hurdle model for the mortality rate adjusting for sociodemographic and health conditions.

Results: Estimated mortality rate ratios (MRR) for long-term average PM_{2.5} were not statistically significant in either of the two components of the hurdle model (i.e., the likelihood of reporting at least one death or the count of fatal cases). We found that having 10% or more of the population over 65 years of age (MRR=3.91 95%CI 2.24-6.81), the poverty index (MRR=1.03 95%CI 1.01-1.05), and the prevalence of hypertension over 6% (MRR=1.32 95%CI 1.03-1.68) are the main factors associated with death rate at the municipality level. Having a higher hospital beds capacity is inversely correlated to mortality.

Conclusions: There was no evidence of an association between long-term exposure to PM_{2.5} and mortality rate at the municipality level in Colombia. Demographics, health system capacity, and social conditions did have evidence of an ecological effect on COVID-19 mortality.

Key words: COVID-19, Coronavirus, Air Pollution, Particulate Matter, Mortality, Colombia

Introduction

The SARS-CoV-2 is a new coronavirus, responsible for the human coronavirus disease 2019 (COVID-19) initially reported in Wuhan, China in December 2019. The rapid global spread of COVID-19 made the World Organization of Health (WHO) to declare it a public health emergency of international concern (1). Up to and including July 20th 2020, 14,530,563 cases and 606,741 deaths have been reported in 188 countries (2). Approximately 80% of COVID-19 confirmed cases reported mild to moderate disease and the average case fatality rate is 4.6%, with a wide variation across countries (3).

Efforts to determine modifiable factors that could exacerbate symptoms and increase the risk of COVID-19 mortality remain essential to guide public policies. Conditions such as age above 65 years and underlying chronic diseases including diabetes, hypertension, cardiovascular disease, chronic lung disease, kidney failure, and cancer increase the risk of mortality (4-8). On the other hand, environmental factors have been less explored, despite the recent evidence of potential COVID-19 transmission through the air (9, 10). Recent studies suggest that chronic air pollution exposure, mainly to nitrogen dioxide (NO₂), fine particulate matter (PM_{2.5}) and sulphur dioxide (SO₂), increase the COVID-19 mortality risk by 11.2% (CI95%: 3.4%-19.5%), 15% (CI95%:5% - 25%) and 17.2% (CI95%:0.5%-36.9%), respectively (11-13).

The dynamics of the pandemic have had geographic transitions, from China to Europe and then to America, with a growing impact in Latin America and the Caribbean (14, 15). In developing countries of Latin America, average concentrations of air pollutants are usually higher than levels reported in high-income countries of Europe and North America, especially for PM_{2.5} (16). Despite the known effect of chronic exposure to air pollution on the burden of cardiovascular and respiratory diseases (17, 18), its potential effect on COVID-19 mortality has not been fully elucidated, particularly in low-and-middle income countries. The objective of the study was to determine the association of chronic exposure to PM_{2.5}, with COVID-19 mortality in Colombia, using an ecological approach.

Methods

Study Population

Colombia is a country located in the extreme north of South America, made up of 32 departments, 1,122 municipalities and a total population estimated by 2020 of 50,372,424 inhabitants according to the National Administrative Department of Statistics (DANE, for its initials in Spanish) (19). Half of the population are women (51.2%), 77.1% of people live in urban areas and 68.2% of Colombians are between 15 and 64 years old.

The first case of COVID-19 was confirmed on March 6th 2020 in Bogotá, the capital district. After nearly four months of the epidemic, there have been 182,140 confirmed cases of COVID-19 in 772 municipalities of Colombia up to and including July 17th, according to the National Institute for Health (INS, for its initials in Spanish). Most COVID-19 confirmed cases are male (53.6%) and 45.5% of cases are in the range between 20 and 39 years old. Deaths for COVID-19

reach 6,288 cases with a fatality proportion among confirmed cases of 3.4%. A total of 1,159,562 molecular tests have been conducted with a current test positivity of 17% (20).

Data Sources

Air pollution data

Ninety-two out of 1122 municipalities measure air quality on a regular basis in Colombia (21). Large cities such as Bogota, Medellin, Bucaramanga, Cali, and Barranquilla have air quality monitoring networks. Medium-size and smaller cities perform periodic manual measurements that are not easily available. Existing surface measurements indicate that air quality problems are mainly associated with particulate matter (PM₁₀ and PM_{2.5}) as these pollutants regularly exceed air quality regulations, especially during the dry period, from January to April. Because of the scarcity of surface measurements in the country, we retrieved PM_{2.5} surface concentrations from the Copernicus Atmospheric Monitoring Service CAMS Reanalysis (CAMSRA) for this study. CAMSRA uses four-dimensional variational data assimilation techniques, combining satellite observations with a global scale atmospheric model to produce aerosol concentrations and mixing ratios of several gases at the surface and vertical gridded data (22, 23). CAMS Near Real-Time (CAMSNRT) is evaluated on a quarterly basis, and evaluation reports are available at the COPERNICUS website (24). Surface CAMSRA concentrations over Colombia for PM_{2.5} were downloaded using the ECMWF WebAPI and the Python script provided at this platform. Monthly average gridded data were retrieved at a 0.125-degree resolution from January 2014 to December 2018. PM_{2.5} concentrations were estimated at the centroid of each municipality by using a mathematical interpolation from the nearest four retrieved CAMSRA concentrations.

Population and socioeconomic data

Total population, population by age groups, and area (urban/rural) were retrieved at municipality level from the estimation of population 2020 based on the Colombian census DANE 2018. Cartographic information and maps were obtained from the DANE Geoportal public website (25) and the spatial data were created in ArcGIS 10.6.1® using the projection of Colombia in mode Custom Azimuth Equidistant and Datum WGS 1984. We used the multidimensional poverty index as a socioeconomic ecologic measure at the municipality level. The multidimensional poverty index is a national measure of poverty calculated at municipality level using data from the 2018 census of the population that includes 15 indicators grouped in five dimensions: home educational conditions, childhood and youth conditions, health, work, access to public services, and house conditions. The poverty index ranges from 0 to 100 with higher percentages meaning privation of more indicators and dimensions. The higher the index, the higher the socioeconomic deprivation (26).

Health data

For this study, data related to the number of confirmed cases and deaths for COVID-19 and the number of RT-PCR tests to confirm positive cases of infected people were taken from the official records of the National Institute for Health (INS). All 1,122 municipalities in Colombia report probable COVID-19 cases to the National Public Health Surveillance System (SIVIGILA, for its initials in Spanish) where cases are compiled, analyzed, and confirmed or discarded. Colombian official registries of COVID-19 cases and deaths are provided by INS and anonymized information is publicly available online (www.ins.gov.co). Database of cases includes case by case information of report date, diagnosis date, date of first symptoms, department and municipality of origin, age, sex, clinical condition, and death date for fatality cases. The INS also acts as the national laboratory of reference for laboratory tests. Information about the number of tests performed is updated daily by department and it is also available online at the INS website.

The crude period prevalence of arterial hypertension, diabetes mellitus, and chronic kidney disease was calculated for the 1,122 municipalities of Colombia. Prevalent cases were considered to be the people reported with the diagnosis for each disease by the Health Benefit Plan Management Entities (EAPB, for its initials in Spanish) to the High-Cost Account of the Ministry of Health and Social Protection between July 1st, 2018 and June 30th, 2019. According to the resolution 2463 of 2014 of the Ministry of Health and Social Protection of Colombia, the information of chronic kidney disease, hypertension, and diabetes mellitus patients should be reported annually with detailed case by case information including defined demographic and clinical indicators. Prior to calculations, these data were audited and filtered by the High-Cost Account for quality control. The denominator for the prevalence calculation was the estimated population by municipality projected by DANE on January 1st of 2019. Hospital beds capacity was measured as intermediate and intensive care beds per 100,000 inhabitants for each municipality, as a surrogate of the health system capacity. Data were obtained from the publicly available national registry of healthcare providers (Registro Especial de Prestadores de Servicios de Salud - REPS <https://prestadores.minsalud.gov.co/habilitacion/>).

Statistical analysis

The Colombian municipalities with at least one confirmed case of COVID-19 constituted the analytic sample. Population-time at risk was calculated as the total population multiplied by the number of days since the first symptom for the first confirmed case at each municipality with cases. The mortality proportion was calculated as the total confirmed deaths for COVID-19 divided by the total population, and the mortality rate was calculated using the population-time at risk as the denominator. The distribution of the deaths counts for the municipalities with at least one confirmed case of COVID-19 was graphically described, and its fit to a Poisson distribution was explored, using the variance test (VT) and the O_2 test. Based on the mean (8.14) and variance (5,49) of the death counts the null hypothesis was rejected in both tests ($p > 0.01$). The

main source of overdispersion of the death counts of COVID-19 was given by the high heterogeneity of the counts (range: 0-1402), but also by the high presence of inflated zeros (58.5%).

Considering the high number of zeros and that from an epidemiological point of view the first death of COVID-19 represents a phase of the pandemic for one specific municipality, we decided to fit a hurdle model regression for the death counts. Hurdle models can be interpreted as two-part models integrated into one model. The first part is typically a binary response model (logit) and the second part is usually a truncated-at-zero count model (27). Consequently, the first component of the model lets us identify the variables associated with the positive outcomes (>0) that result from passing the zero hurdle (threshold), in this case defined as having at least one death. We fit a logit-negative binomial hurdle model as the counts over zero were still overdispersed. We use the population-time at risk as the “offset” variable in the regression models. These specifications let to estimate the effect of the independent variables on the expected logarithm of the mortality rate adjusted by person-time in each municipality.

The continuous long-term average of $PM_{2.5}$ was used as the main independent variable in the hurdle model. In a sensitivity analysis, models were run using the $PM_{2.5}$ average categorized and with restricted cubic splines using three knots. The Akaike criterion was calculated to compare the models. The effect of long-term $PM_{2.5}$ was adjusted by the following confounding variables identified in the directed acyclic diagram (DAG, see supplementary material Figure S1) that were used as covariates: percentage of population 65 years or older, percentage of urban population, population density, poverty index, hospital beds capacity, number of COVID-19 tests at department level, and prevalence (percentage) of hypertension, diabetes, and chronic renal failure. We run the analysis clustered by department to account for potential correlation in municipalities within the same department. Secondary analyses were conducted excluding the capital district of Bogotá, which holds the highest count of deaths, excluding Medellín, the city among three capitals for which CAMSRA underestimates land-based concentrations (see supplementary material Figure S3), and excluding municipalities with less than 10 confirmed cases. All the analyses were run in STATA 15.

Results

There were 182,140 confirmed cases and 6,288 confirmed deaths for COVID-19 in Colombia up to and including July 17th. COVID-19 cases were confirmed in 772 out of 1122 municipalities (68.8%) and deaths for COVID-19 were reported in 320 (41.5% of municipalities with cases). Table 1 summarizes the characteristics of the municipalities with COVID-19 confirmed cases. Mortality proportion for COVID-19 varies widely across municipalities with confirmed cases from 0 to 197.0 per 100,000; the mortality rate (using person-time at risk as the denominator) ranged between 0 and 38.4 per 1,000,000. Figure 1(a) presents the mortality rate for COVID-19

by municipality. The long-term average exposure to PM_{2.5} (2014-2018) in municipalities with COVID-19 confirmed cases was 20.0 µg/m³ with a range between 9.1 and 37.5 µg/m³. Figure 1(b) presents the long-term average exposure to PM_{2.5} at municipality level.

The geographic pattern of COVID-19 mortality proportion and long-term average of PM_{2.5} do not seem to have a good overlap at visual inspection as some municipalities with low levels of PM_{2.5} exhibit high mortality proportion. The regions with higher mortality proportion are located in the Atlantic and Pacific coasts, and the Amazonian region. Figure 2 shows the graphical inspection of the relation between the estimated long-term mean of PM_{2.5} and the logarithm of the COVID-19 mortality rate. The patterns did not follow a linear trend and increased log of mortality rates for COVID-19 are present at lowest levels of mean PM_{2.5}. Using a binomial approach (having or no having deaths), the relation with mean PM_{2.5} did not follow a linear trend but a line with different inflection points (See Supplementary material Figure S2). Restricted cubic splines of PM_{2.5} with three knots identified those points to be 12.6, 19.3, and 26.6 µg/m³.

We present the results of our main analysis using hurdle models in Table 2. Estimated mortality rate ratios (MRR) for long-term average PM_{2.5} were not statistically significant in either of the two components of the model: the logit component modeling the change of no having deaths to have at least one death, and the negative binomial model of counts of deaths. In the logit component, we found that having 10% or more of the population over 65 years of age and the prevalence of hypertension over 6% are the main factors associated with death rate at municipality level while having a higher percentage of urban population and higher hospital beds capacity are negatively correlated to mortality. Once the municipality reaches at least one COVID-19 death, the main factors associated with the mortality rate are the percentage of urban population and the poverty index. In addition, an important cluster (department) effect was identified in the data (p-value=0.001).

We found that secondary analysis exhibits similar results to our main analysis in terms of no evidence of increased risk of COVID-19 mortality rate associated with increased long-term average of PM_{2.5} at municipality level (Table 3). Results similar to our main analysis were also consistent in sensitivity analysis using different approaches to model PM_{2.5} long-term average exposure (See supplementary material Table S1).

Discussion

This is the first ecologic nation-wide study conducted in a developing country assessing the association between COVID-19 mortality and long-term exposure to PM_{2.5}. Our results did not find evidence of an association between higher concentrations of PM_{2.5} and higher counts of deaths, controlling for nine socioeconomic and health indicators at municipality level. The effect of socioeconomic and health conditions in the municipalities, such as the proportion of the

population over 65 years, the poverty index, and the prevalence of hypertension, did show evidence of increasing the risk of deaths for COVID-19, while the hospital's capacity decreased that risk.

The first COVID-19 confirmed case was identified in Bogota, the capital district (20), where the highest number of cases have occurred exceeding 45,000 by mid-July. The first cases identified in the capital district were related to returning flights from Europe which were also related to the first cases identified in other main capital cities including Medellin and Cali. Then, an additional infection source came from international cruises in the Port of Cartagena, where the epidemic spread to the Atlantic Coast. The epidemic in the Brazilian Amazonian region was the probable source of infection in Leticia, the capital of the Amazonas department, which is the municipality with the highest mortality proportion for COVID-19 in Colombia (195.02 per 100,000 inhabitants). Thus, the COVID-19 spread went from capital cities to small municipalities, where the mortality rates have been higher.

There was no evidence of an association between long-term average of $PM_{2.5}$ and the mortality rate for COVID-19 in the crude or adjusted models. Our results contrast with studies conducted in China (12) and the United States (11), which found positive associations between $PM_{2.5}$ and COVID-19 mortality after adjusting for four and 20 potential confounders, respectively. These results supported the hypothesis that the effect of long-term exposure to $PM_{2.5}$ on COVID-19 mortality is largely mediated by comorbidities linked to chronic PM-related inflammation (28, 29). In this regard, it has been proposed that chronic exposure to $PM_{2.5}$ causes alveolar ACE-2 receptor overexpression, that may increase viral load in patients exposed to pollutants (30). Our findings revealed a significant effect of ageing and poverty on COVID-19 mortality rate, factors related to failure in the mechanisms of acute immune humoral and cellular response at the individual level, and to higher burden of chronic disease and lower capability of the healthcare system to treat complicated cases of infection, at the municipal level. These findings might suggest that the chronic effect of ageing and poverty might have a stronger effect on COVID-19 complications and mortality in developing countries.

Another possible explanation to our findings is that long-term exposure to $PM_{2.5}$ has less impact on biological susceptibility to COVID-19 complications and deaths compared to the effect of other air pollutants such as nitrogen dioxide (NO_2). The stronger short-term effect of NO_2 compared to other pollutants on respiratory and cardiovascular morbidity have been identified using multipollutant models in Colombia (31). A country-wide cross-sectional study in the United States using multipollutant models for the effect of $PM_{2.5}$, NO_2 and O_3 found a strong positive association between NO_2 and COVID-19 fatality and mortality but did not find significant associations with $PM_{2.5}$ and O_3 (13). The authors discussed that divergent results with the previous US nationwide study (11) are probably due to the use of multi-pollutant models and the adjustment for spatial trends, which might have confounded the findings. Unfortunately, we

did not count on reliable NO₂ and O₃ long-term exposure estimations so we did not assess this effect in multi-pollutant models.

We found an independent and significant effect of the older age, the poverty index, and the prevalence of hypertension (over 6%) associated with COVID-19 mortality rate. Similar findings related to age and chronic diseases have been reported in several studies (4-8). In Italy Conticini et al. (28) discussed that important factors such as the age structure of the affected population, the great differences between the Italian regional health systems, the capacity of intensive care units in the region, and prevention policies adopted by the government have played a major role in the spread of and mortality for SARS-CoV-2, presumably more than long-term air pollution itself. The effect of poverty on COVID-19 mortality has been less described in the literature but it represents a major risk condition in developing countries probably related to unstable occupation and income, lower health literacy, and limited access to preventive health services (32, 33). A few recent ecological studies in the US at county level have reported a correlation between COVID-19 mortality rate and some social disparities such as poverty status and non-English speaking households and other ethnic minorities (34, 35).

Strengths of this study include the use of nationwide public official data at municipality level, adjustment for nine sociodemographic and health conditions using a hurdle model, and the use of average long-term estimations of PM_{2.5} exposure. The estimation of PM_{2.5} concentration in this study comes from the CAMSRA model, which has been evaluated using independent measurements available in different world regions at the ground level and in the tropospheric column. These evaluations show that CAMSRA successfully reproduces levels and trends of aerosols and gases (36). An evaluation of the performance of CAMSRA over the cities of Bogota, Medellin, and Bucaramanga for PM_{2.5}, CO, and NO₂ concentrations was conducted recently comparing measurements from the air quality monitoring networks with retrieved CAMSRA concentrations. Results showed that CAMSRA is able to reproduce PM_{2.5} levels and trends in these three cities, however, the model largely underestimates NO₂ and CO concentrations (37) (also see figure S3 in the supplementary material). Although elevated levels of PM_{2.5} are observed in urban areas, PM_{2.5} distribution in Colombia shows that even medium-size and small municipalities have similar or even higher concentrations of PM_{2.5}. This behavior coincides with the geographical distribution of aerosols reported in previous studies for Colombia (18, 38). These studies indicate that biomass burning is an important source of PM_{2.5} in Colombia and that both large and small cities are affected by this source. The PM_{2.5} geographical distribution and trends presented in this study (Figure 1b) coincides with results reported in all these studies.

Our study has some limitations. First, it was conceived as an ecological study whose nature precludes the extrapolation of inferences from the empirical evaluation of hypothesis based on clusters (i.e., municipalities) to the individual level, therefore, the absence of a relationship between long-term exposure to PM_{2.5} and mortality among patients diagnosed with SARS-CoV-

2 should at best be regarded as provisional. Second, exposure was determined using a model-based approach, that even though captured the heterogeneity of concentration across municipalities had a moderate correlation to land-based measurements in a selected sample of some of the largest ones, which might have partially attenuated any underlying association between PM_{2.5} and mortality. Third, in the absence of reliable NO₂ and O₃ long-term exposure estimations, we could not incorporate them into the analysis or evaluate the independent association of PM_{2.5} and mortality in the context of multi-pollutant models. Fourth, mortality data reflect fatal cases among patients with a confirmatory diagnosis of the infection, excluding deaths among undiagnosed individuals (due to either low testing rates or unreliable test results) and those occurring outside of hospitals. Systematic differences in the capability of municipalities to comprehensively and correctly identify and register deaths attributable to the infection could have biased our estimate of effect. Although this issue could not be directly addressed in the analysis, adjusting for testing rates and hospital beds capacity should have partially corrected for differential readiness of municipal health systems to cope with the epidemic.

Conclusions

There was no evidence of an association between long-term exposure to PM_{2.5} and mortality rate for COVID-19 at the municipality level in Colombia. Demographics, health system capacity, and social conditions did show an ecological effect on COVID-19 mortality.

Potential conflicts of interest

The authors have no conflicts of interest relevant to this article to declare.

Funding

This work was supported by the Colombian Ministry of Science and Technology - MINCIENCIAS Grant No. 905–2019. The funder did not have any role in the design, analysis, or interpretation of the study.

Data Sharing statement:

Data will be made available upon request

Acknowledgement

The authors would like to thank Yurley Rojas for her contribution to the generation of maps and Gloria Ramos for updating the COVID-19 public data set for analysis.

Tables

Table 1. Characteristics of the municipalities with COVID-19 cases in Colombia up to and including July 17th, 2020 (mean and SD)

Variable	Total 772 municipalities	PM _{2.5} <20 µg/m ³ 393 municipalities	PM _{2.5} ≥20 µg/m ³ 379 municipalities
COVID-19 mortality rate (per 1,000,000)	0.75 (2.23)	0.75 (2.60)	0.74 (1.76)
Time since symptoms in first case	66.15 (37.58)	62.48 (36.68)	69.96 (38.18)
% Population 65 or older	10.03 (3.64)	9.89 (3.75)	10.17 (3.53)
% Urban population	49.26 (24.71)	41.74 (22.53)	57.07 (24.48)
Population density per Km ²	229.98 (899.66)	116.38 (421.68)	347.78 (1119.66)
Poverty index	39.85 (17.73)	42.56 (18.72)	37.03 (16.19)
Hospital beds capacity (per 100,000)	71.95 (78.22)	70.78 (77.73)	73.15 (78.81)
% Hypertension	6.11 (3.74)	5.68 (3.19)	6.57 (4.19)
% Diabetes	1.57 (1.42)	1.43 (1.04)	1.73 (1.71)
%Chronic renal failure	0.94 (1.26)	0.86 (1.00)	1.04 (1.48)

Table 2. Mortality rate ratios in the main analysis using hurdle models for municipalities with COVID-19 cases in Colombia up to and including July 17th, 2020

Variable	Component logit (0-at least one death)			Component negative binomial (counts of deaths>1)		
	MRR	95% CI	P-value	MRR	95% CI	P-value
Long-term average PM _{2.5} (µg/m ³)	1.00	0.92 - 1.08	0.973	1.00	0.95 - 1.06	0.747
% Population 65 or older>10%	3.91	2.24 – 6.81	0.000	0.51	0.23 – 1.14	0.100
% Urban population	0.96	0.94 – 0.98	0.000	1.02	1.01 – 1.03	0.000
Population density (per Km ²)	0.99	0.99 – 1.00	0.129	1.00	0.99 – 1.00	0.033
Poverty index	0.99	0.97 – 1.02	0.928	1.03	1.01 - 1.05	0.001
Hospital beds capacity (per 100,000)	0.99	0.98 – 0.99	0.000	1.00	0.99 – 1.01	0.052
% Hypertension spline 1 (2.09-5.97)	0.75	0.60 – 0.94	0.013	0.96	0.73 – 1.28	0.804
spline 2 (5.97-10.37)	1.32	1.03 – 1.68	0.026	1.00	0.70 – 1.45	0.960
% Diabetes>4%	0.29	0.01 – 9.97	0.495	1.74	0.43 – 6.95	0.434
%Chronic renal failure>3%	1.25	0.35 – 4.39	0.726	0.42	0.15 – 1.17	0.096
Number of test at department level	1.00	0.00 - 1.00	0.056	1.00	0.99 - 1.00	0.565

MRR: Mortality Rate Ratio; CI: Confidence Interval

Table 3. Mortality rate ratios in secondary analysis using hurdle models for municipalities with COVID-19 cases in Colombia up to and including July 17th, 2020

Long-term PM _{2.5} ($\mu\text{g}/\text{m}^3$)	Component logit* (0 - at least one death)			Component negative binomial* (counts of deaths > 1)		
	MRR	95% CI	P-value	MRR	95% CI	P-value
Excluding Bogotá	1.00	0.93 - 1.08	0.973	1.00	0.96 - 1.06	0.784
Excluding Medellín	1.00	0.93 - 1.08	0.973	1.01	0.95 - 1.06	0.759
Excluding municipalities with less than 10 confirmed COVID-19 cases	1.02	0.96 - 1.07	0.494	1.03	0.96 - 1.09	0.347

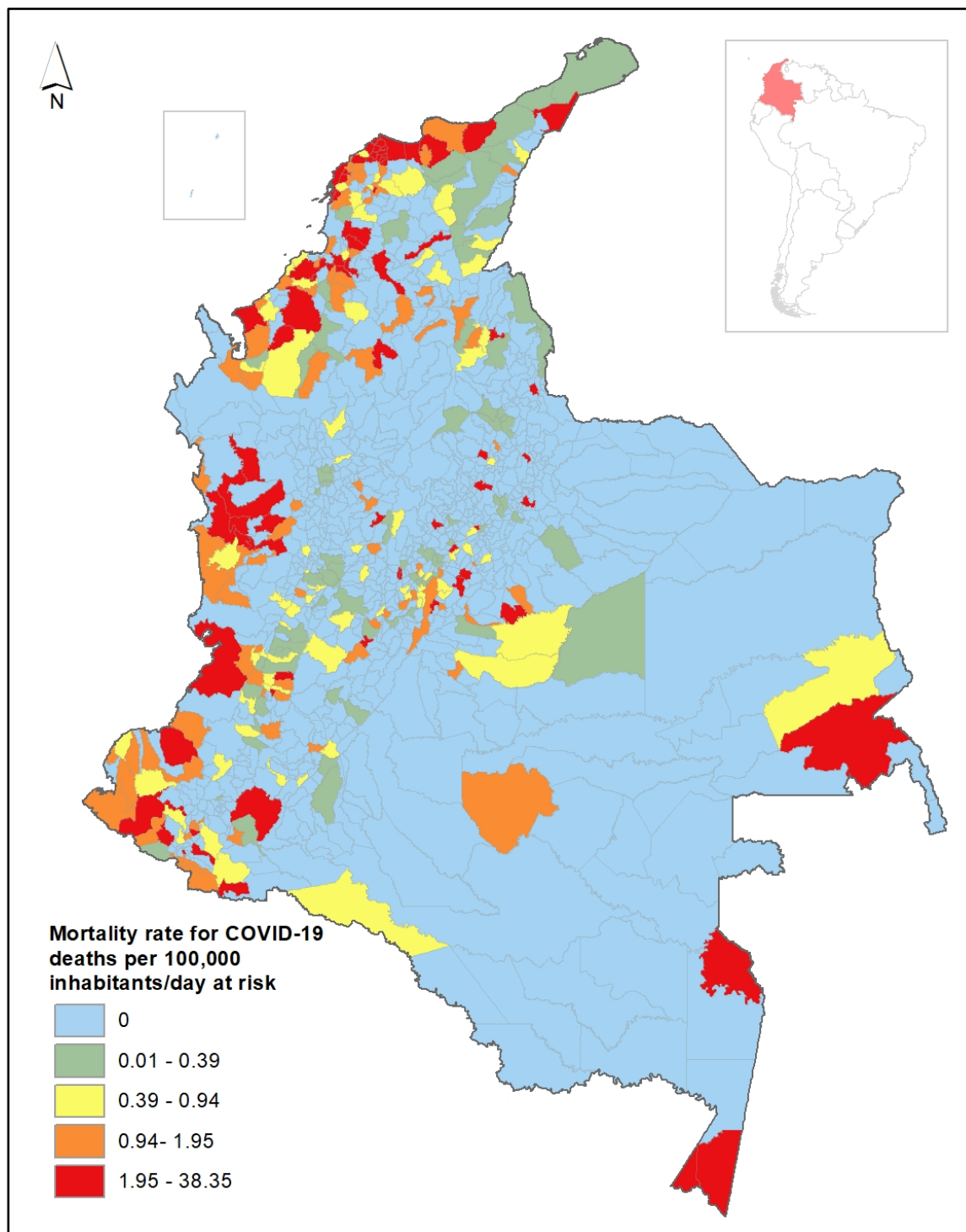
MRR: Mortality Rate Ratio; CI: Confidence Interval

*Adjusted for the percentage of population 65 years or older, percentage of urban population, population density, poverty index, hospital beds capacity, number of tests at department level, and prevalence of hypertension, diabetes, and chronic renal failure.

Figures

Figure 1. Mortality for COVID-19 and PM_{2.5} long-term average in Colombia at municipality level.

(a) Mortality rate for COVID-19 by municipality in Colombia up to and including July 17th, 2020.



(b) Long-term average of $PM_{2.5}$ concentrations (2014–2018) in Colombia (in $\mu\text{g}/\text{m}^3$)

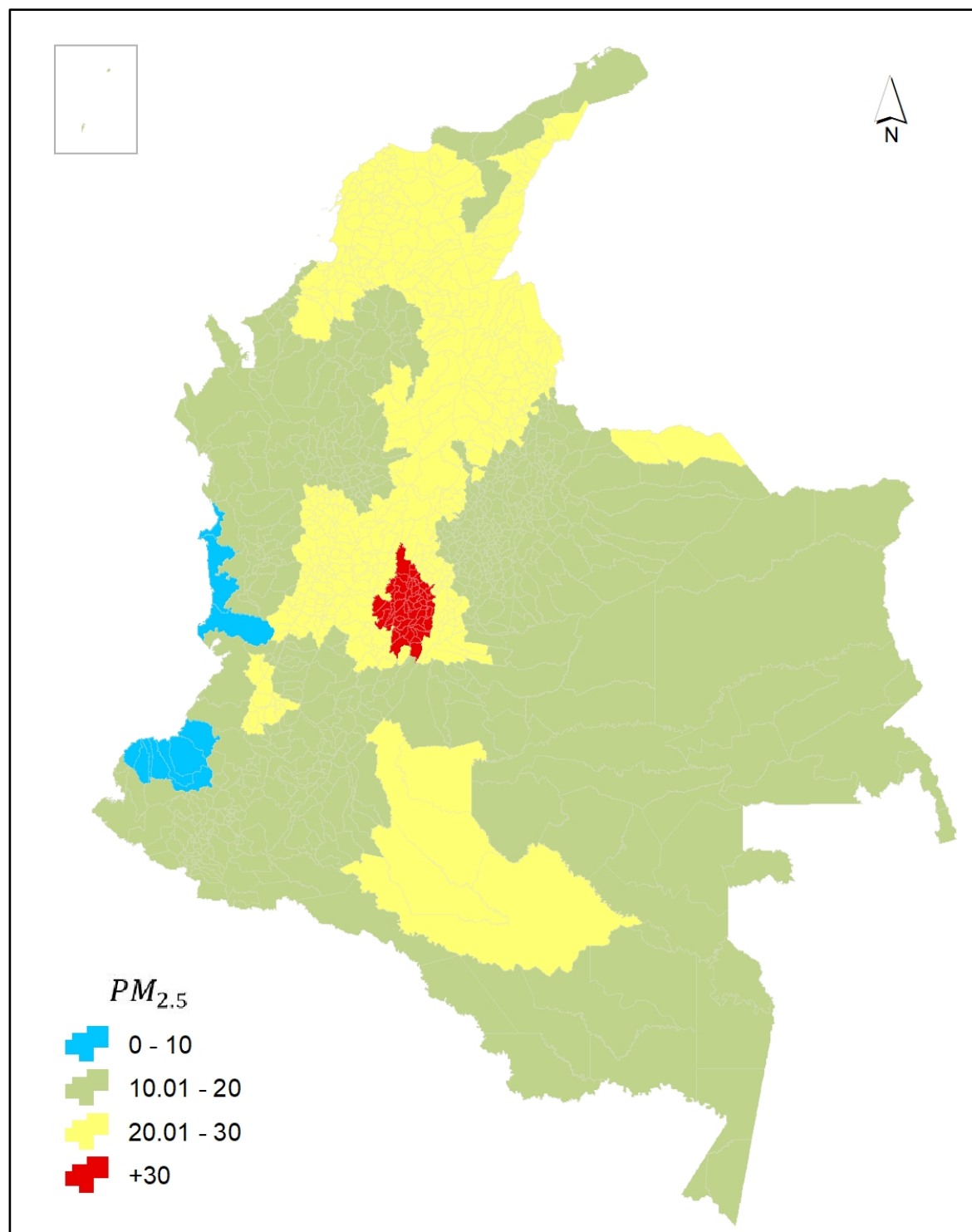
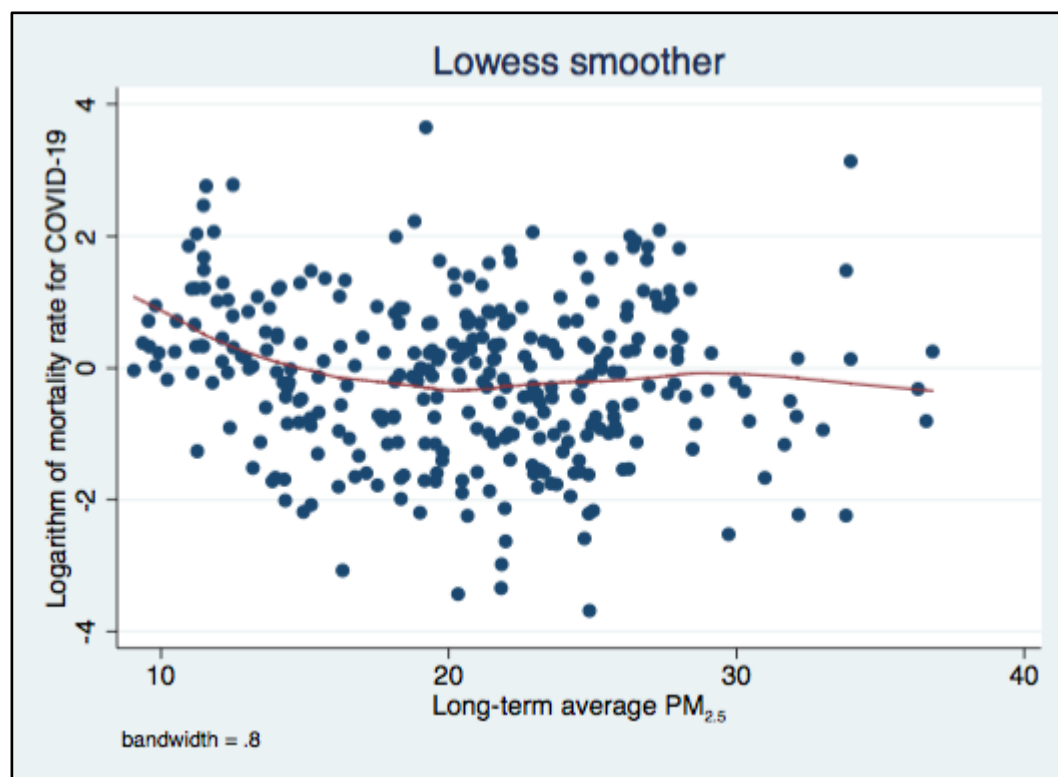


Figure 2. Relation between mortality rate for COVID-19 and $PM_{2.5}$ in municipalities with COVID-19 confirmed cases in Colombia up to and including July 17th, 2020.



References

1. World Health Organization. WHO Timeline - COVID-19 2020 [July 17, 2020]. Available from: <https://www.who.int/news-room/detail/27-04-2020-who-timeline---covid-19>.
2. Johns Hopkins Coronavirus Resource Center. COVID-19 Map 2020 [July 17, 2020]. Available from: <https://coronavirus.jhu.edu/map.html>.
3. Wang D, Hu B, Hu C, Zhu F, Liu X, Zhang J, et al. Clinical Characteristics of 138 Hospitalized Patients With 2019 Novel Coronavirus-Infected Pneumonia in Wuhan, China. *JAMA*. 2020.
4. Ruan Q, Yang K, Wang W, Jiang L, Song J. Clinical predictors of mortality due to COVID-19 based on an analysis of data of 150 patients from Wuhan, China. *Intensive Care Med*. 2020;46(5):846-8.
5. Lippi G, Wong J, BM. H. Hypertension and its severity or mortality in Coronavirus Disease 2019 (COVID-19): a pooled analysis. *Polish Archives of Internal Medicine*. 2020:15272.
6. Hussain A, Bhowmik B, do Vale Moreira NC. COVID-19 and diabetes: Knowledge in progress. *Diabetes Res Clin Pract*. 2020;162:108142.
7. Zhou F, Yu T, Du R, Fan G, Liu Y, Liu Z, et al. Clinical course and risk factors for mortality of adult inpatients with COVID-19 in Wuhan, China: a retrospective cohort study. *Lancet*. 2020;395(10229):1054-62.
8. Cheng Y, Luo R, Wang K, Zhang M, Wang Z, Dong L, et al. Kidney disease is associated with in-hospital death of patients with COVID-19 *Kidney Int*. 2020;97(5):829-38.
9. Lu J, Gu J, Li K, Xu C, Su W, Lai Z, et al. COVID-19 Outbreak Associated with Air Conditioning in Restaurant, Guangzhou, China, 2020. *Emerg Infect Dis*. 2020;26(7):1628-31.
10. Setti L, Passarini F, De Gennaro G, Barbieri P, Perrone MG, Borelli M, et al. Airborne Transmission Route of COVID-19: Why 2 Meters/6 Feet of Inter-Personal Distance Could Not Be Enough. *Int J Environ Res Public Health*. 2020;17(8).
11. Wu X, Nethery RC, Sabath BM, Braun D, Dominici F. Exposure to air pollution and COVID-19 mortality in the United States: A nationwide cross-sectional study. *medRxiv*. 2020.
12. Yao Y, Pan J, Wang W, Liu Z, Kan H, Qiu Y, et al. Association of particulate matter pollution and case fatality rate of COVID-19 in 49 Chinese cities. *Sci Total Environ*. 2020;741:140396.
13. Liang D, Shi L, Zhao J, Liu P, Schwartz J, Gao S, et al. Urban Air Pollution May Enhance COVID-19 Case-Fatality and Mortality Rates in the United States. *medRxiv*. 2020.
14. World Health Organization. WHO Coronavirus Disease (COVID-19) Dashboard 2020 [July 17, 2020]. Available from: <https://covid19.who.int/>.
15. Kirby T. South America prepares for the impact of COVID-19. *Lancet Respir Med*. 2020;8(6):551-2.
16. World Health Organization. Database on Source Apportionment Studies for Particulate Matter in the Air (PM10 and PM2.5). [July 17, 2020]. Available from: https://www.who.int/quantifying_ehimpacts/global/source_apport/en/.
17. Cesaroni G, Forastiere F, Stafoggia M, Andersen ZJ, Badaloni C, Beelen R, et al. Long term exposure to ambient air pollution and incidence of acute coronary events: prospective cohort study and meta-analysis in 11 European cohorts from the ESCAPE Project. *BMJ*. 2014;348:f7412.
18. Ballesteros-González K, Sullivan AP, Morales-Betancourt R. Estimating the air quality and health impacts of biomass burning in northern South America using a chemical transport model. *Science of The Total Environment*. 2020;739:139755.

19. Departamento Administrativo Nacional de Estadística DANE. Censo Nacional de Población y Vivienda de Colombia 2018 2018 [May 5, 2020]. Available from: <https://www.dane.gov.co/files/censo2018/infografias/info-CNPC-2018total-nal-colombia.pdf>.
20. Instituto Nacional de Salud (Colombia). Coronavirus (COVID - 2019) en Colombia 2020 [July 17, 2020]. Available from: <https://www.ins.gov.co/Noticias/Paginas/Coronavirus.aspx>.
21. Instituto de Hidrología MyEAI. Informe del Estado de la Calidad de Aire. Bogotá: 2017.
22. Flemming J, Benedetti, A., Inness, A., Engelen, R.J., Jones, L., Huijnen, V., Remy, S., Parrington, M., Suttie, M., Bozzo, A., Peuch, V.H., Akritidis, D., Katragkou, E., . The CAMS interim reanalysis of carbon monoxide, ozone and aerosol for 2003-2015. *Atmos Chem Phys*. 2017;17:1945-83.
23. European Centre for Medium-Range Weather Forecasts. The new CAMS global reanalysis of atmospheric composition 2019 [May 8, 2020]. Available from: <https://www.ecmwf.int/en/newsletter/158/meteorology/new-cams-global-reanalysis-atmospheric-composition>.
24. Copernicus Atmosphere Monitoring Service CAMS. Validation report of the CAMS near-real time global atmospheric composition service. Period December 2019 – February 2020 2020 [July 1, 2020]. Available from: https://atmosphere.copernicus.eu/sites/default/files/2020-06/21_CAMS84_2018SC2_D1.1.1_DJF2020.pdf.
25. Departamento Administrativo Nacional de Estadística DANE. Geoportal DANE 2020 [May 5, 2020]. Available from: <https://geoportal.dane.gov.co/>.
26. Departamento Administrativo Nacional de Estadística DANE. Medida de la pobreza multidimensional municipal con información censal 2020 [May 5, 2020]. Available from: <https://www.dane.gov.co/index.php/estadisticas-por-tema/pobreza-y-condiciones-de-vida/pobreza-y-desigualdad/medida-de-pobreza-multidimensional-de-fuente-censal>.
27. Cameron A.C, Tivedi PK. *Regression Analysis of Count Data*. Cambridge: Cambridge University Press; 1998.
28. Conticini E, Frediani B, Caro D. Can atmospheric pollution be considered a co-factor in extremely high level of SARS-CoV-2 lethality in Northern Italy? *Environ Pollut*. 2020;261:114465.
29. Tsai DH, Riediker M, Berchet A, et al. Effects of short- and long-term exposures to particulate matter on inflammatory marker levels in the general population. *Environ Sci Pollut Res Int* 2019;26(19):19697-704.
30. Frontera A., Cianfanelli L., Vlachos K., Landoni G., Cremona G. Severe air pollution links to higher mortality in COVID-19 patients: the “double-hit” hypothesis. *Journal of Infection*. 2020.
31. Rodríguez-Villamizar LA, Rojas-Roa NY, Fernández-Niño JA. Short-term joint effects of ambient air pollutants on emergency department visits for respiratory and circulatory diseases in Colombia, 2011-2014. *Environ Pollut*. 2019;248:380-7.
32. Bong CL., Brasher C., Chikumba ., McDougall R., Mellin-Olsen J., Enroght A. The COVID-19 Pandemic: Effects on Low- and Middle-Income Countries. *Anesth Analg*. 2020;131(1):86-92.
33. Proaño CR. On the Macroeconomic and Social Impact of the Coronavirus Pandemic in Latin America and the Developing World. *Inter Econ*. 2020;55(3):159-62.
34. Zhang CH, Schwartz GG. Spatial Disparities in Coronavirus Incidence and Mortality in the United States: An Ecological Analysis as of May 2020. *J Rural Health*. 2020;36(3):433-45.
35. Fielding-Miller RK, Sundaram ME, Brouwer K. Social determinants of COVID-19 mortality at the county level. *medRxiv*. 2020.
36. Wang Y, Ma YF, Eskes H, Inness A, Flemming J, Brasseur GP. Evaluation of the CAMS global atmospheric trace gas reanalysis 2003–2016 using aircraft campaign observations. *Atmos Chem Phys*. 2020;20(7):4493-521.

37. Vargas JM. Evaluación espacial y temporal de la calidad del aire en Colombia a partir de los datos del servicio de monitoreo atmosférico de Copernicus (CAMS) y monitoreos en superficie [Master diploma work]. Bogotá DC.: Universidad Nacional de Colombia; 2020.
38. Luna M.A.G., Luna F.A.G., Espinosa J.F.M., Belalcazar-Cerón LC. Spatial and temporal assessment of particulate matter using AOD data from MODIS and surface measurements in the ambient air of Colombia. *Asian Journal of Atmospheric Environment* 2018;12(2):165-77.