

ISARIC COVID-19 Clinical Data Report issued: 15 December 2021

International Severe Acute Respiratory and emerging Infections Consortium

ISARIC Clinical Characterisation Group*, J. Kenneth Baillie, Joaquin Baruch, Abigail Beane, Lucille Blumberg, Fernando Augusto Bozza, Tessa Broadley, Aidan Burrell, Gail Carson, Barbara Wanjiru Citarella, Jake Dunning, Loubna Elotmani, Noelia Garcia Barrio, Jean-Christophe Goffard, Bronner Goncalves, Matthew Hall, Madiha Hashmi, Peter Horby, Waasila Jassat, Devachandran Jayakumar, Christiana Kartsonaki, Bharath Kumar Tirupakuzhi Vijayaraghavan, Pavan Kumar Vechem, Cedric Laouenan, Samantha Lissauer, Ignacio Martin-Loeches, France Mentre, Ben Morton, Daniel Munblit, Nikita A. Nekliudov, Alistair Nichol, David S.Y. Ong, Prasan Kumar Panda, Miguel Pedrera Jimenez, Michelle Petrovic, Nagarajan Ramakrishnan, Grazielle Viana Ramos, Claire Roger, Amanda Rojek, Oana Sandulescu, Malcolm G. Semple, Pratima Sharma, Louise Sigfrid, Benedict Sim Lim Heng, Budha Charan Singh, Emily Somers, Anca Streinu-Cercel, Fabio S. Taccone, Jia Wei, Evert-Jan Wils, Xin Ci Wong, Piero L. Olliaro, Laura Merson^

*group members, participating institutions and funders are listed at end of the report

^Correspondence to: Laura.Merson@ndm.ox.ac.uk, ISARIC, Pandemic Sciences Centre, Nuffield Department of Medicine, University of Oxford, Oxford, UK

Abstract

ISARIC (International Severe Acute Respiratory and emerging Infections Consortium) partnerships and outbreak preparedness initiatives enabled the rapid launch of standardised clinical data collection on COVID-19 in Jan 2020. Extensive global uptake of this resource has resulted in a large, standardised collection of comprehensive clinical data from hundreds of sites across dozens of countries. Data are analysed regularly and reported publicly to inform patient care and public health response. This report, our 16th report, is a part of a series. Data have been entered for 706,747 individuals from 1669 partner institutions and networks across 64 countries.

The comprehensive analyses detailed in this report includes hospitalised individuals of all ages for whom data collection occurred between 30 January 2020 and up to and including 21 September 2021, AND who have laboratory-confirmed SARS-COV-2 infection or clinically diagnosed COVID-19.

For the 614,497 cases who meet eligibility criteria for this report, selected findings include:

- median age of 58 years, with an approximately equal (50/50) male:female sex distribution
- one third of the cohort are at least 70 years of age, whereas 4% are 0-19 years of age
- the most common symptom combination in this hospitalised cohort is shortness of breath, cough, and history of fever, which has remained constant over time
- the five most common symptoms at admission were shortness of breath, cough, history of fever, fatigue/malaise, and altered consciousness/confusion, which is unchanged from the previous reports
- age-associated differences in symptoms are evident, including the frequency of altered consciousness increasing with age, and fever, respiratory and constitutional symptoms being present mostly in those 40 years and above
- 15% of patients with relevant data available were admitted at some point during their illness into an intensive care unit (ICU), which is slightly lower than previously reported (19%)
- antibiotic use remains very high (56%), although it is lower than previously reported (80%), in those for whom relevant data are available (379,319); in ICU/HDU patients with data available (42,841), 91% received antibiotics
- use of corticosteroids was reported for 24% of patients of all types for whom data were available (593,701); in ICU/HDU patients with data available (42,791), 67% received corticosteroids
- outcomes are known for 556,928 patients and the overall estimated case fatality ratio (CFR) is 25.3% (95%CI 25.2-25.4), rising to 38.7% (95%CI 38.3-39) for patients who were admitted to ICU/HDU, demonstrating worse outcomes in those with the most severe disease

We thank all the data contributors for their ongoing support. This report is the next in a series retrievable at <https://doi.org/10.1101/2020.07.17.20155218>

To access previous versions of **ISARIC COVID-19 Clinical Data Report** please use the link below:

<https://isaric.org/research/covid-19-clinical-research-resources/evidence-reports/>

ERRATUM for <https://doi.org/10.1101/2020.07.17.20155218>

Due to a fault in processing of the data for the ISARIC Clinical Data Report issued 14 July 2021, the following results in that version of the report had errors:

- Time periods: Length of hospital stay and symptom onset to admission
- Patients who received oxygen therapy ever, including: the number of patients who were administered corticosteroids while on oxygen therapy but not IMV; the number of patients who were administered corticosteroids and did not receive oxygen therapy, proportion of patients who received oxygen therapy, and proportion of patients who received oxygen while in ICU

These figures have been corrected in this version of the report.

NB: the methods for assessing the proportion of patients that meet the 4 most common COVID-19 case definitions have been updated in this version of the report. Only patients with no missing data for the symptoms included in the corresponding definition are included in this analysis.

NOTE: This preprint reports new research that has not been certified by peer review and should not be used to guide clinical practice.



ISARIC (International Severe Acute Respiratory and Emerging Infections Consortium)

A global federation of clinical research networks, providing a proficient, coordinated, and agile research response to outbreak-prone infectious diseases

Background

This report describes the clinical presentation, treatment and outcome of a cohort of over 700,000 patients with COVID-19 hospitalised between January 2020 and September 2021 in 64 countries throughout the world. This has been possible thanks to 1669 institutions and their clinical teams contributing to ISARIC (International Severe Acute Respiratory and Emerging Infection Consortium), a grassroots collaboration <https://isaric.org/>.

After over 250 million cases and over 5 million deaths, COVID-19 is clearly showing us how pandemics disrupt populations by stretching healthcare systems, and shaking economies. Although clinicians and well-equipped surveillance systems can adapt to health emergencies by implementing new treatments and information systems, clinical research lacks this agility.

The advantages of an international standardised case record form. Novel diseases are, by definition, new; the scientific method is not. By developing consensus on a road map for clinical research methods before a pandemic, we are able to minimise further time defining study types, data collection tools, and potential outputs for evidence summarisation once the pathogen emerges. Using slightly adjusted standardised methods for novel diseases, evidence can be generated quickly.

While small observational studies are easy to conduct, they often record different data or may record variables in different ways. This may not allow data to be collated or findings to be compared across studies, or combined to produce a more powerful and accurate representation. In contrast, large international observational studies with a standardised form allow for international data comparisons, improved analytic control of confounders, and therefore enable the acquisition of high levels of evidence.

How we got here with ISARIC. In 2013, ISARIC and the World Health Organisation (WHO) implemented the standardised Clinical Characterisation Protocol to evolve clinical data into research evidence during health emergencies.

In January 2020, we launched our case report form when only 846 COVID-19 cases had been reported globally. The first patient was enrolled on 30 January 2020. Today, our partners have collected standardised, in-hospital clinical data from over 700,000 patients, in 1669 sites, across 64 countries. More than half of these patients live in low- and middle-income countries. This partner-fueled growing initiative is to our knowledge the largest COVID-19 in-hospital international database in the world.

In this report, we present the current state of our database, which all our collaborators can access by submitting a statistical analysis plan to our clinical team. We encourage our collaborators to test their research hypothesis within the framework of ISARIC’s collaborative Partner Analysis scheme [2]. The majority of this database is additionally available to external researchers via application to our Data Access Committee at <https://www.iddo.org/covid19/data-sharing/accessing-data>.

These analyses are available on the ISARIC COVID-19 Dashboard at <https://livedataoxford.shinyapps.io/CovidClinicalDataDashboard/>

To contribute, please contact ncov@isaric.org.

Methods

The results in this report are produced using data from the ISARIC COVID-19 database of international, prospective observational data on clinical features of patients admitted to hospital with COVID-19. Data collection was structured on the ISARIC/WHO Clinical Characterisation Protocol for Severe Emerging Infections, a standardized protocol for investigation of severe acute infections by pathogens of public health interest [3] and the ISARIC case report forms [4] designed for standardized data collection from the start of an outbreak and rapid dissemination of clinical information [5-9]. Data are collected on Research electronic Data Capture (REDCap, version 8.11.11, Vanderbilt University, Nashville, Tenn.), hosted by the University of Oxford. Additional data, collected using a wide variety of data systems, are submitted by international investigators who are not using the University of Oxford REDCap instance. Data are curated by the Infectious Diseases Data Observatory [10] to the CDISC Study Data Tabulation Model (SDTM) for harmonised analysis [11].

SDTM formatted data are processed in R 4.1.0 [12]. Initial data cleaning includes custom scripts designed to identify results of laboratory SARS-CoV-2 testing, and to standardise nomenclature for comorbidities, symptoms at admission, treatments, and outcomes.

Patients are excluded if they did not have laboratory or clinically confirmed SARS-CoV-2 infection. Patients are considered to be lost to follow up if either a) they were transferred to another facility, or b) they had an unknown outcome and the last date upon which any data was recorded for them was 45 days or before the date of data extraction. Patients with unknown outcome where the last recorded data was less than 45 days old are instead categorised as receiving ongoing care.

Comorbidities, symptoms at admission, and treatments (in both the full population and the intensive care unit (ICU)/high dependency unit (HDU) population) are included in the report only if at least 10% of patients have their presence or absence recorded. Laboratory and vital sign measurements that fall within the top 2.5% and bottom 2.5% of values, within both the <10 year age group and the ≥ 10 year age group, are taken to be likely mis-entered and changed to missing for this report. Similarly, variables for time durations are converted to missing if their values are either negative or in the top 2.5% of values. Dates are converted to missing where they are before the 1st January 2020 (except for dates of birth and hospital admission) or after the date of data extraction.

The following COVID-19 symptom definitions were used:

- WHO:
 1. A combination of acute fever and cough,
Or
 2. A combination of three or more of: fever, cough, general weakness and fatigue, headache, myalgia (we used muscle aches, joint pain), sore throat, coryza (we used runny nose), dyspnoea (we used shortness of breath), anorexia, nausea and vomiting, diarrhoea, altered mental status (we used altered consciousness or confusion)
- Centers for Disease Control (CDC), United States:
 1. At least two of: fever, chills (not available), rigors (not available), myalgia, headache, sore throat,

new olfactory and taste disorder,

Or

2. At least one of: cough, shortness of breath, difficulty breathing (not available)

- Public Health England

New cough (we used cough), or temperature $\geq 37.8^{\circ}\text{C}$ (we used history of fever), or a loss or change in sense of smell or taste

- European Centre for Disease Prevention and Control

At least one of: cough, fever, shortness of breath, sudden onset anosmia, ageusia or dysgeusia

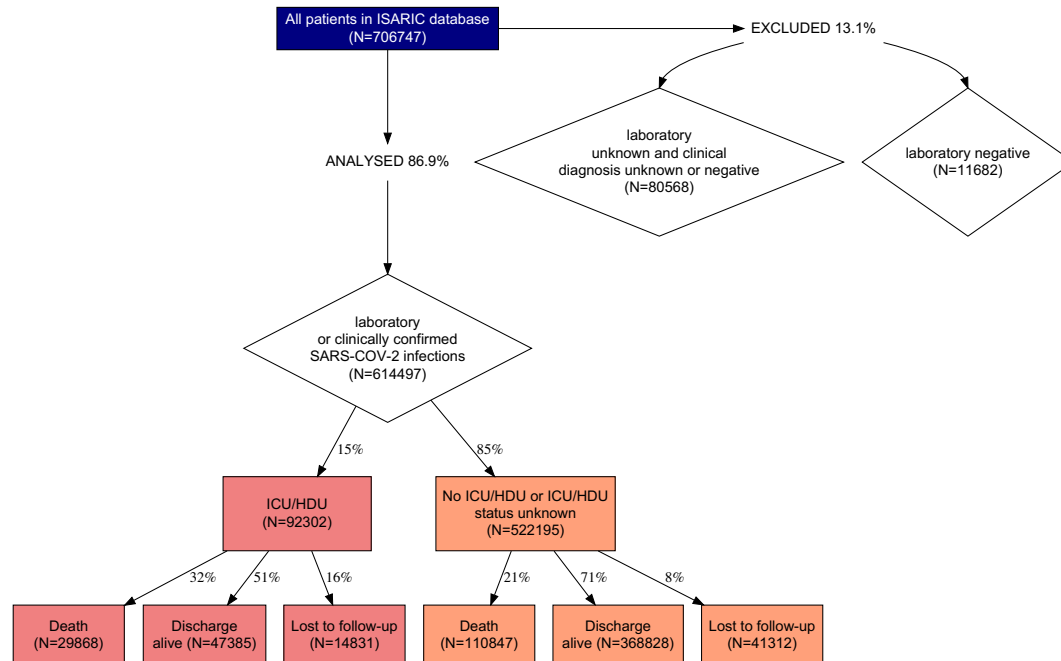
Data manipulation is performed using the tidyverse collection of packages [13], as well as ff [14] and dtplyr [15]. Data visualisation makes use of ggplot [16] and its extension ggupset [17]. The report is generated using knitr [18].

This report only includes individuals for whom data collection commenced on or before 20 September 2021.

Results

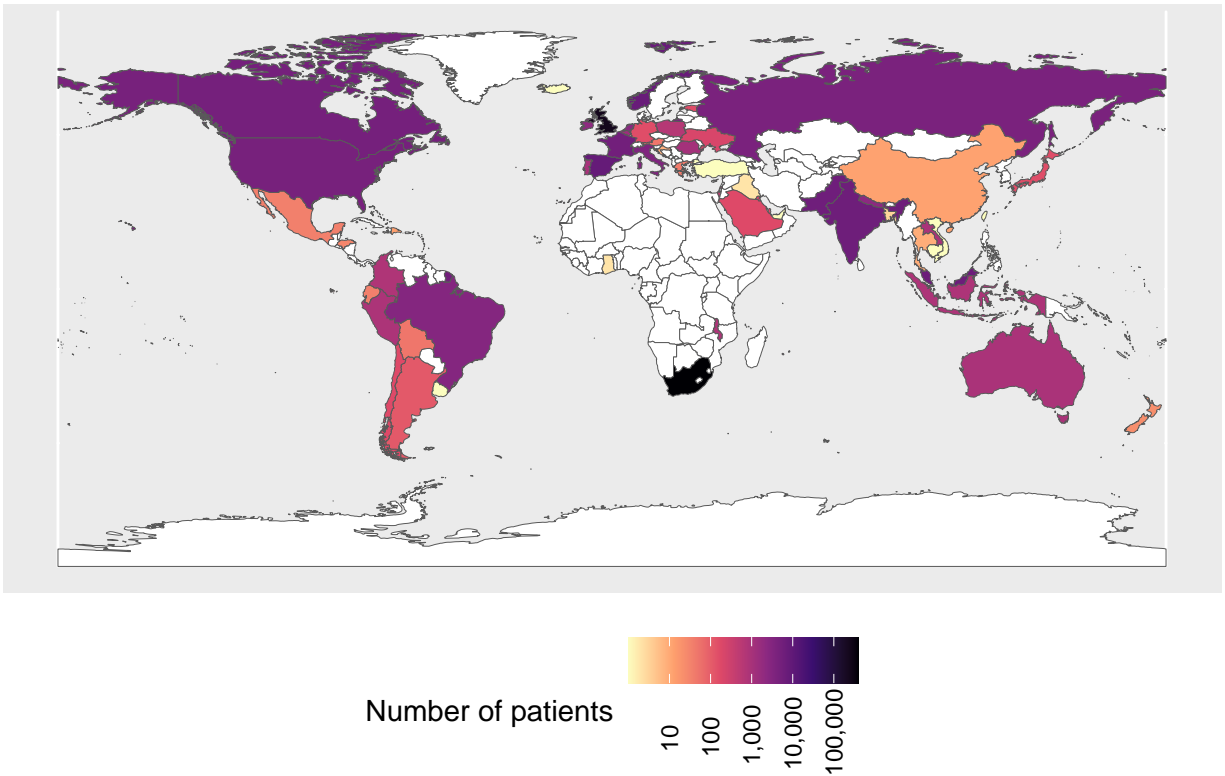
The flow chart (Figure 1) gives an overview of the cohort and outcomes as of 20 September 2021.

Figure 1: Overview of cohort and outcomes as of 20 September 2021.



Data have been contributed by 1669 sites in 64 countries (see Figure 2). 422280 (59.9%) of the patients are from low- and middle-income and 282859 (40.1%) from high-income countries. The two largest contributors to the database are South Africa (55.1%) and the UK (33.8%). Plots grouped by regions and calendar time are shown in Figure 3 and 4. The cohort satisfying the inclusion criteria has **614497** cases.

Figure 2: Distribution of patients by country



Demographics

Of these 614497 cases, 302808 are males and 310903 are females. Sex is unreported for 786 cases. The median age is 58 years, ranging from 0 to 119 years. One-third of the patients are 70 years old and above. Demographics, including age, sex, and outcome, are presented in Table 1 and Figure 5.

Figure 3: Distribution of patients by region and country

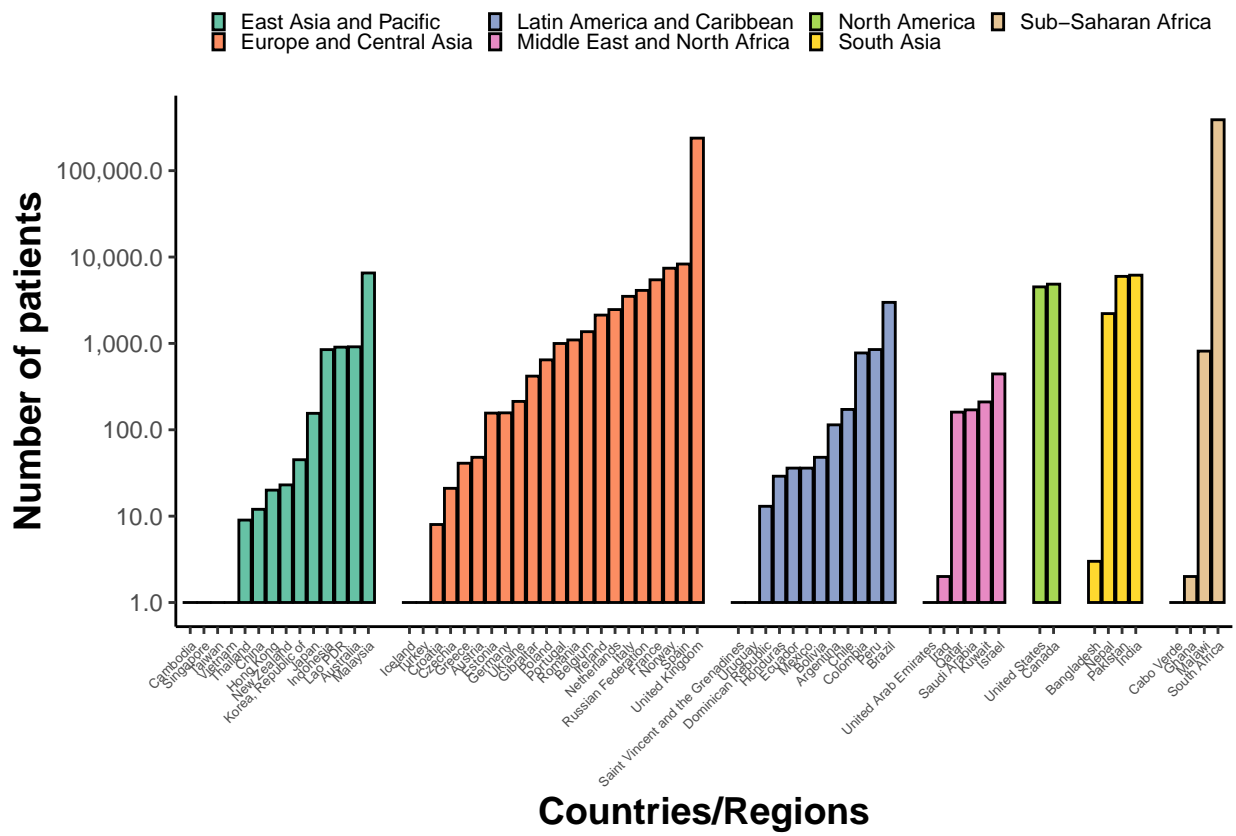


Figure 4: Distribution of patients by region and time

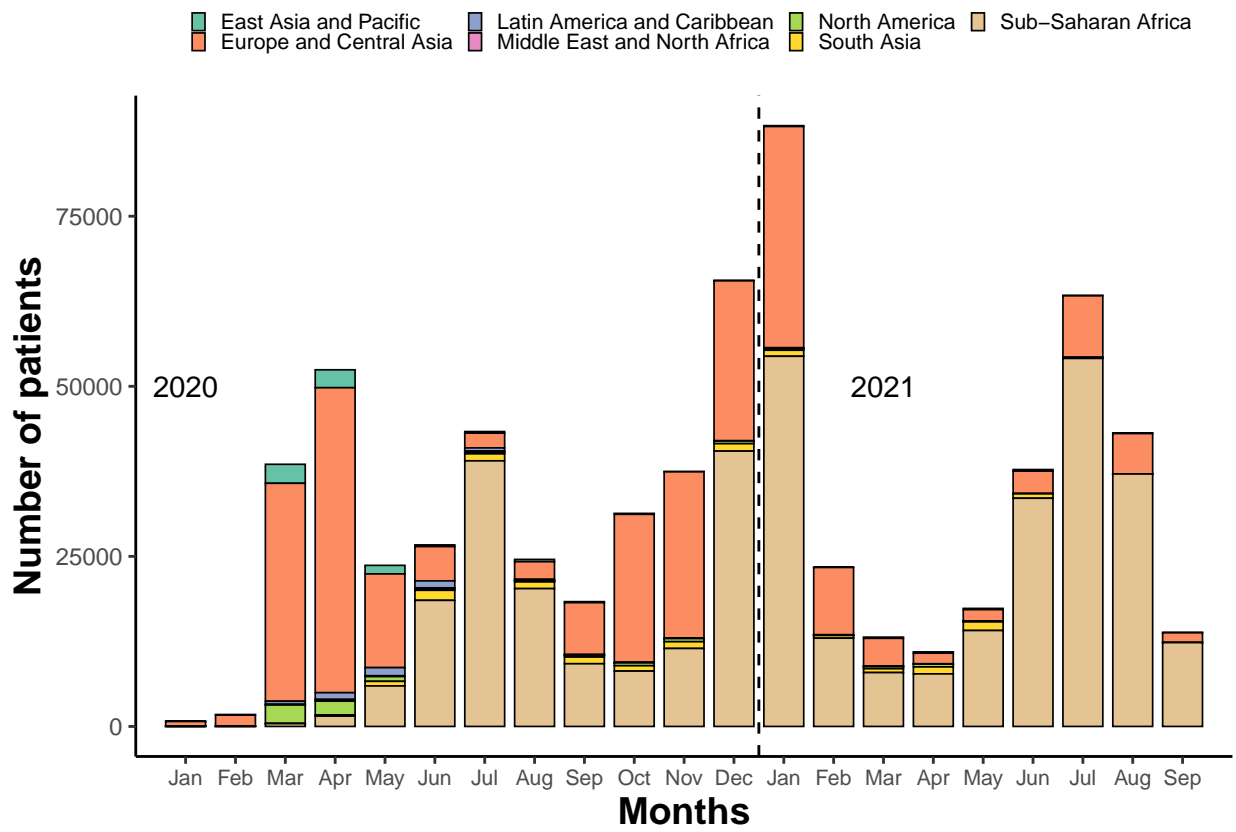


Table 1: Patient Characteristics. Proportions are presented in parentheses, and have been rounded to two decimal places.

Variable	Count (proportion)
Size of cohort	614497
By sex	
Female	310903 (0.51)
Male	302808 (0.49)
Unknown	786 (0)
By outcome status	
Death	140715 (0.23)
Discharge	416213 (0.68)
LTFU	56143 (0.09)
Ongoing care	1426 (0)
By age group	
0-9	11667 (0.02)
10-19	12336 (0.02)
20-29	34692 (0.06)
30-39	64772 (0.11)
40-49	83317 (0.14)
50-59	116094 (0.19)
60-69	107891 (0.18)
70+	179368 (0.29)

Figure 5: Age and sex distribution of patients. Bar fills are outcome (death/discharge/lost to follow-up (LTFU)) at the time of report.

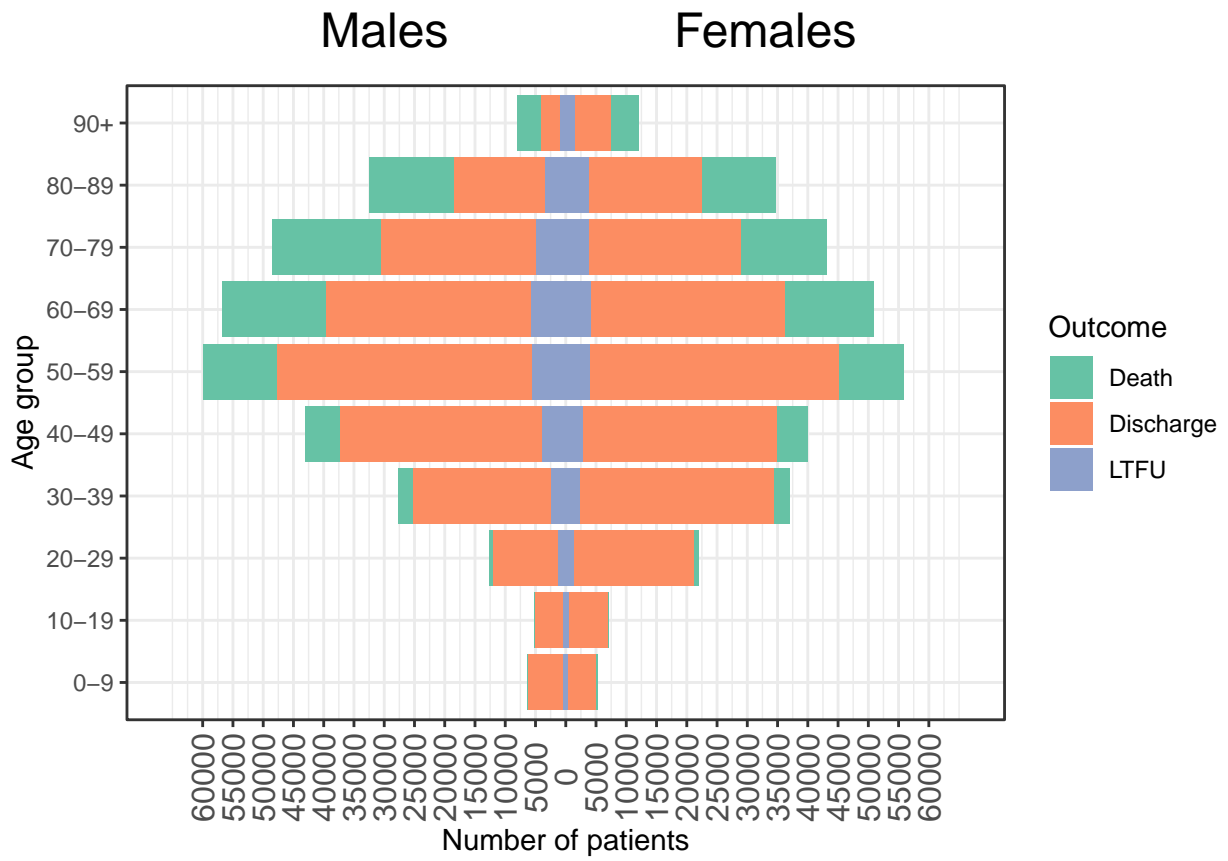


Table 2: Outcome by age and sex. Proportions are calculated using the row total as the denominator.

Variable	Death	Discharge	LTFU	Case fatality ratio
Age				
0-9	368 (0.03)	10616 (0.91)	683 (0.06)	0.03
10-19	356 (0.03)	11067 (0.9)	911 (0.07)	0.03
20-29	1573 (0.05)	30434 (0.88)	2648 (0.08)	0.05
30-39	5126 (0.08)	54823 (0.85)	4725 (0.07)	0.09
40-49	10964 (0.13)	65497 (0.79)	6671 (0.08)	0.14
50-59	22999 (0.2)	83321 (0.72)	9531 (0.08)	0.22
60-69	31883 (0.3)	66098 (0.61)	9736 (0.09)	0.32
70+	67339 (0.38)	93784 (0.52)	18153 (0.1)	0.42
Sex				
Female	65435 (0.21)	218684 (0.7)	25970 (0.08)	0.23
Male	75138 (0.25)	197136 (0.65)	29932 (0.1)	0.28

Presenting symptoms

The observed mean number of days from (first) symptom onset to hospital admission was 5.4, with a standard deviation (SD) of 4.8 days and a median of 5 days.

A detailed analysis of patients' symptoms has been reported in a previous publication [19]. The prevalence of symptoms on admission to the hospital is summarised in Table 3 and Figure 6a. (Note that South Africa did not collect symptoms data. The overall frequency of missing data outside South Africa is 11%). The five most common symptoms at admission are shortness of breath, cough, history of fever, fatigue/malaise, and altered consciousness/confusion, accounting for 58.9%, 57.1%, 53.2%, 38.3%, 19.4% of patients with at least one symptom recorded.

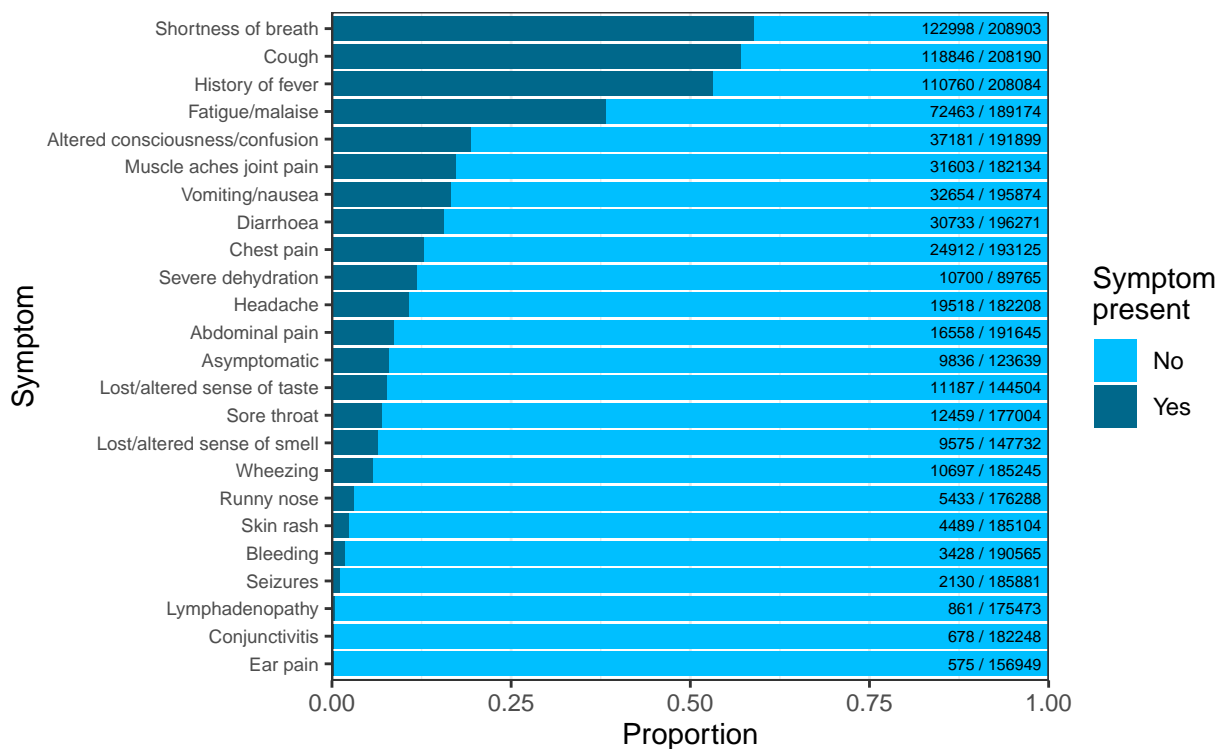
Clusters of symptoms are presented in Figure 6b and 6c. The most common symptom combination is shortness of breath, cough, and history of fever.

Table 3: Prevalence of symptoms.

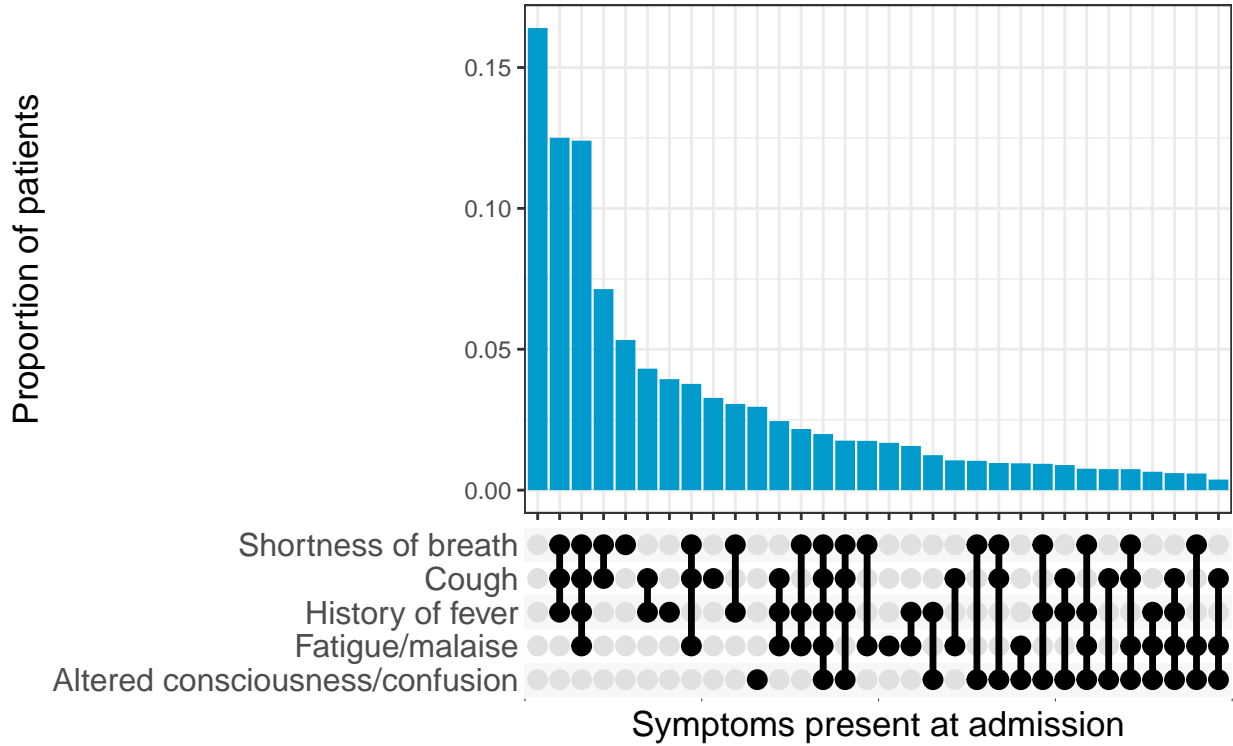
Symptoms	Present	Absent	Unknown
Shortness of breath	122998 (0.2)	85905 (0.14)	405594 (0.66)
Cough	118846 (0.19)	89344 (0.15)	406307 (0.66)
History of fever	110760 (0.18)	97324 (0.16)	406413 (0.66)
Fatigue/malaise	72463 (0.12)	116711 (0.19)	425323 (0.69)
Altered consciousness/confusion	37181 (0.06)	154718 (0.25)	422598 (0.69)
Vomiting/nausea	32654 (0.05)	163220 (0.27)	418623 (0.68)
Muscle aches joint pain	31603 (0.05)	150531 (0.24)	432363 (0.7)
Diarrhoea	30733 (0.05)	165538 (0.27)	418226 (0.68)
Chest pain	24912 (0.04)	168213 (0.27)	421372 (0.69)
Headache	19518 (0.03)	162690 (0.26)	432289 (0.7)
Abdominal pain	16558 (0.03)	175087 (0.28)	422852 (0.69)
Sore throat	12459 (0.02)	164545 (0.27)	437493 (0.71)
Lost/altered sense of taste	11187 (0.02)	133317 (0.22)	469993 (0.76)
Severe dehydration	10700 (0.02)	79065 (0.13)	524732 (0.85)
Wheezing	10697 (0.02)	174548 (0.28)	429252 (0.7)
Asymptomatic	9836 (0.02)	113803 (0.19)	490858 (0.8)
Lost/altered sense of smell	9575 (0.02)	138157 (0.22)	466765 (0.76)
Runny nose	5433 (0.01)	170855 (0.28)	438209 (0.71)
Skin rash	4489 (0.01)	180615 (0.29)	429393 (0.7)
Bleeding	3428 (0.01)	187137 (0.3)	423932 (0.69)
Seizures	2130 (0)	183751 (0.3)	428616 (0.7)
Lymphadenopathy	861 (0)	174612 (0.28)	439024 (0.71)
Conjunctivitis	678 (0)	181570 (0.3)	432249 (0.7)
Ear pain	575 (0)	156374 (0.25)	457548 (0.74)

Figure 6: Clinical symptoms of patients at admission

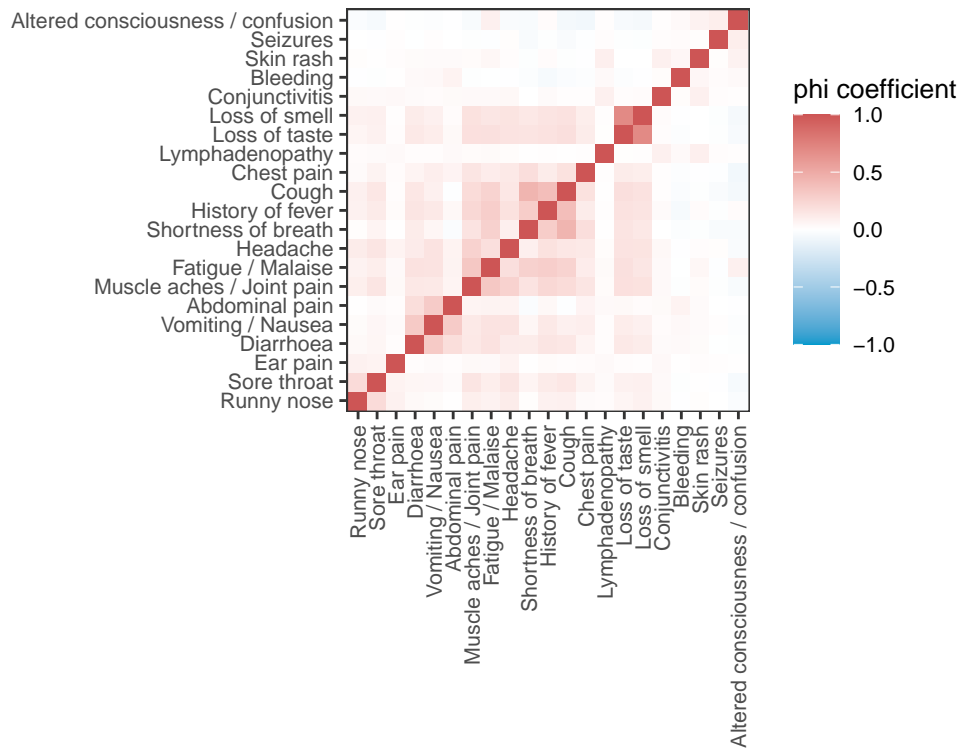
(a) Frequency of symptoms seen at admission amongst COVID-19 patients. Bars are annotated with a fraction representing the number of patients presenting with this symptom over the number of patients for whom presence or absence of this symptom was recorded.



(b) The distribution of combinations of the five most common symptoms, amongst all patients for whom these data were recorded. Filled and empty circles below the x-axis indicate the presence or absence of each comorbidity.

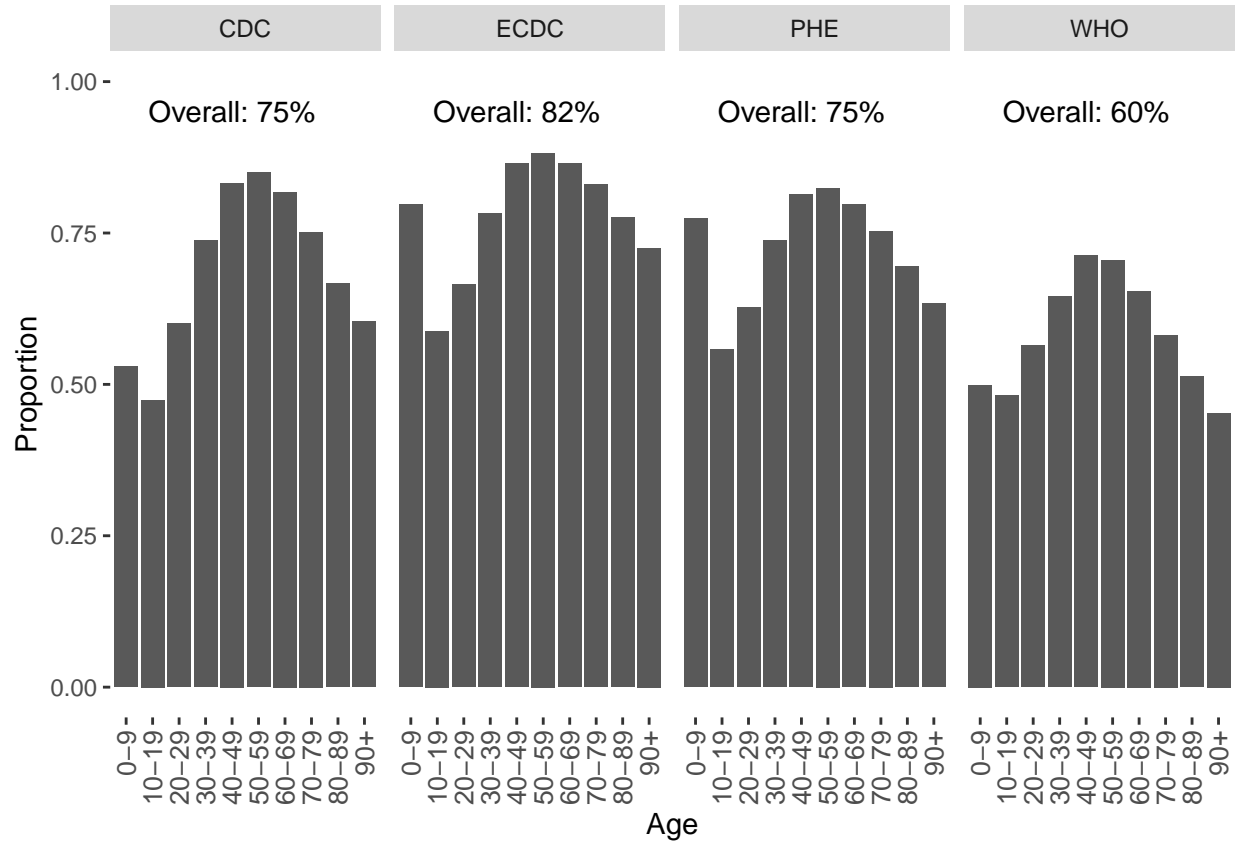


(c) Heatmap for correlation between symptoms. Fill colour is the phi correlation coefficient for each pair of symptoms, calculated amongst patients with recorded presence or absence of both.



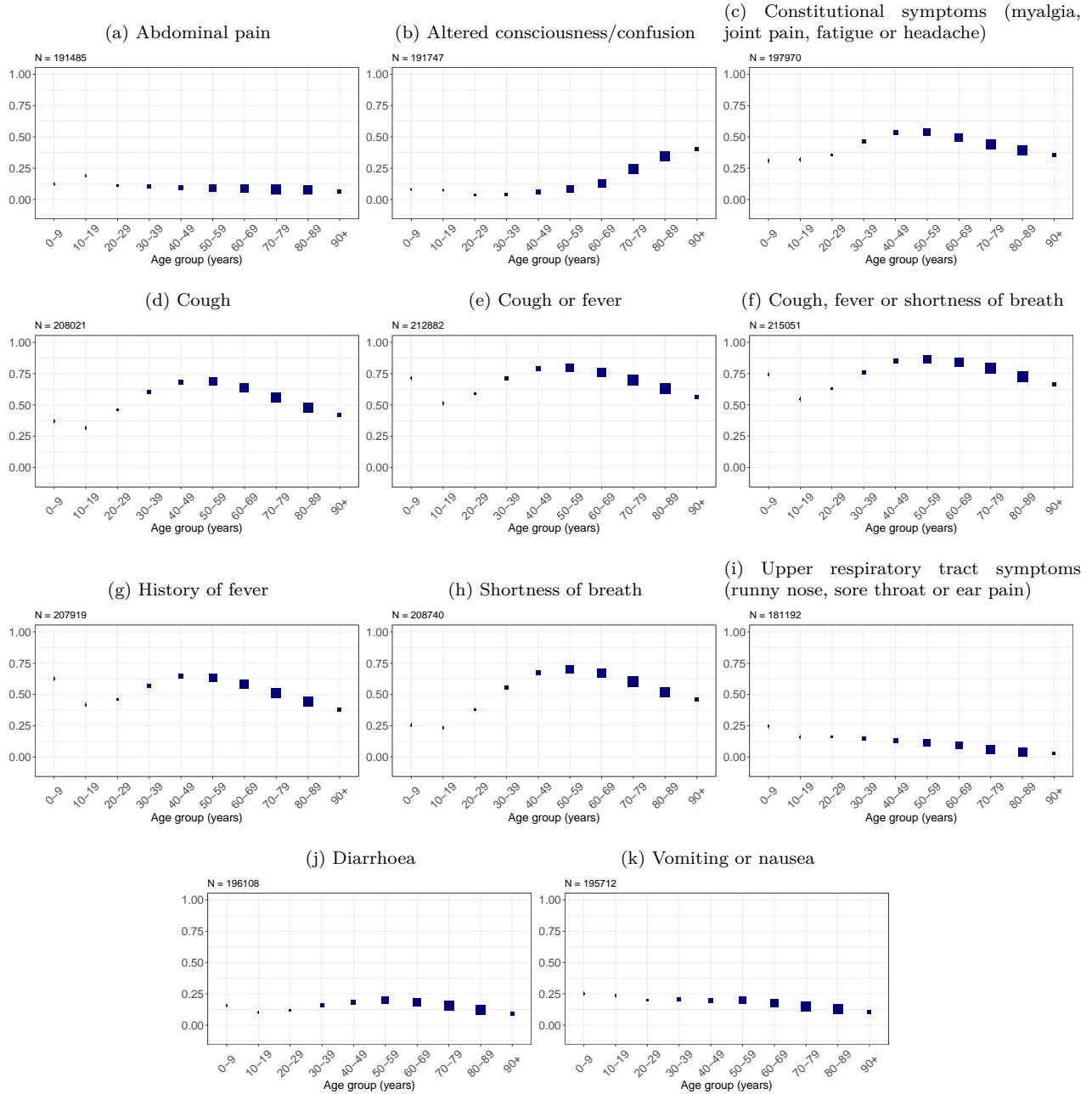
The observed symptoms on admission partly represent case definitions and policies for hospital admission, which may change as time passes. The overall percentages of patients meeting the four most common case definitions were 75%, 82%, 75%, 60% for CDC, ECDC, PHE, and WHO, respectively, and varies by age (Figure 7).

Figure 7: Proportion of patients that meet the 4 most common COVID-19 symptom case definitions by age



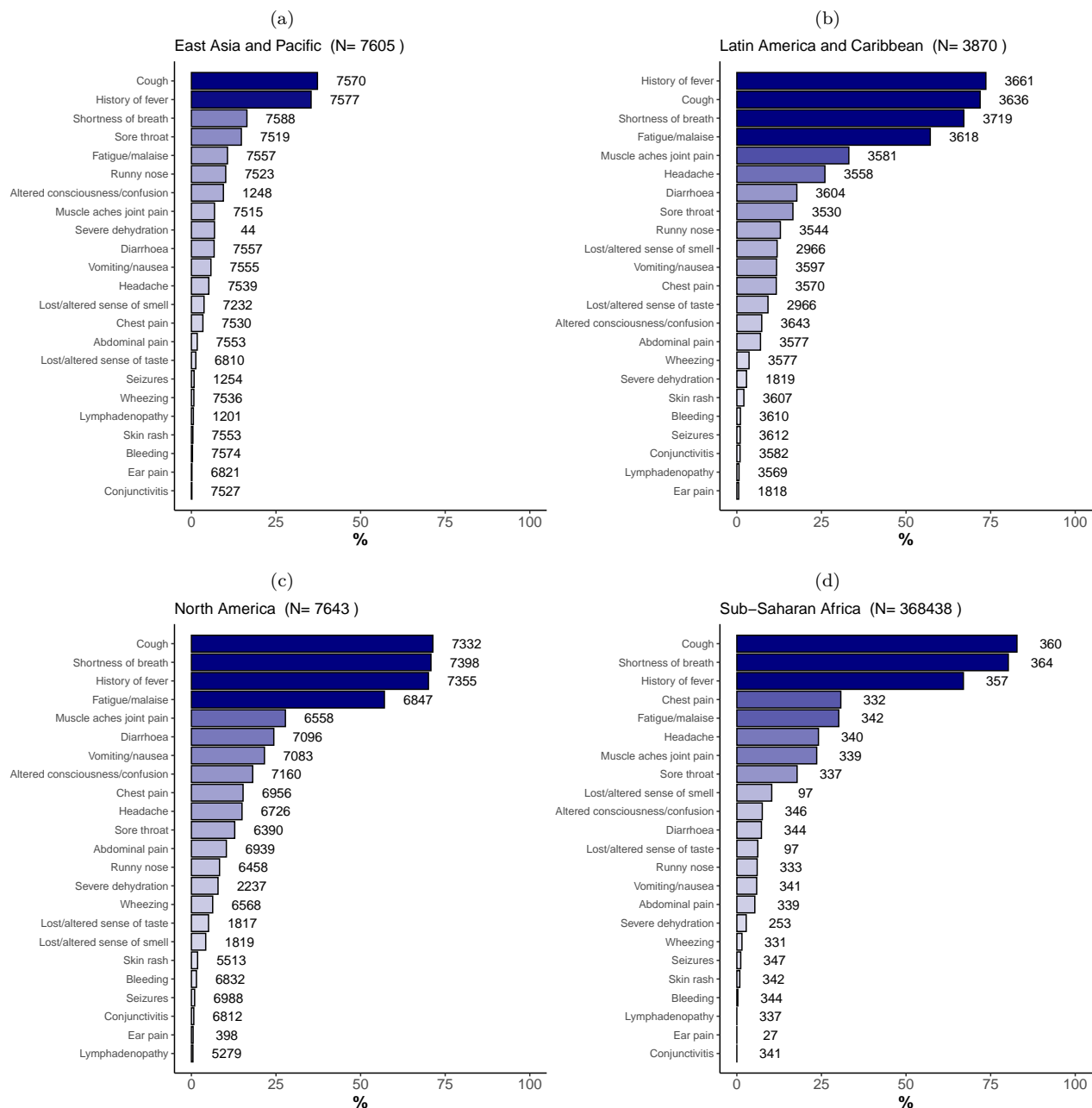
The frequency of presenting symptoms varies with age (Figure 8). Altered consciousness increases with age. Fever, respiratory and constitutional symptoms are mostly present in patients aged 40 and above. The presence of gastro-intestinal symptoms appears to be age-independent.

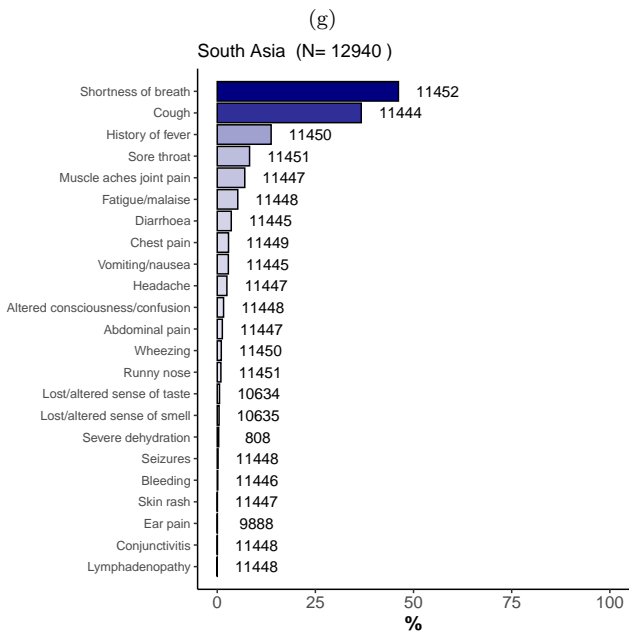
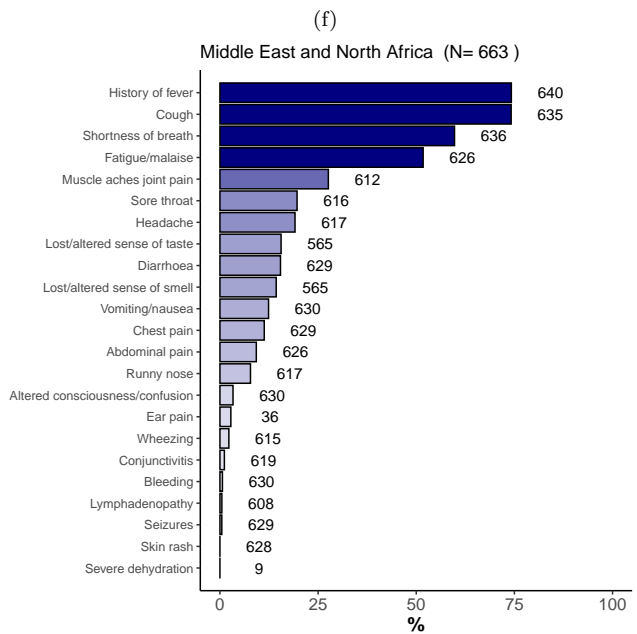
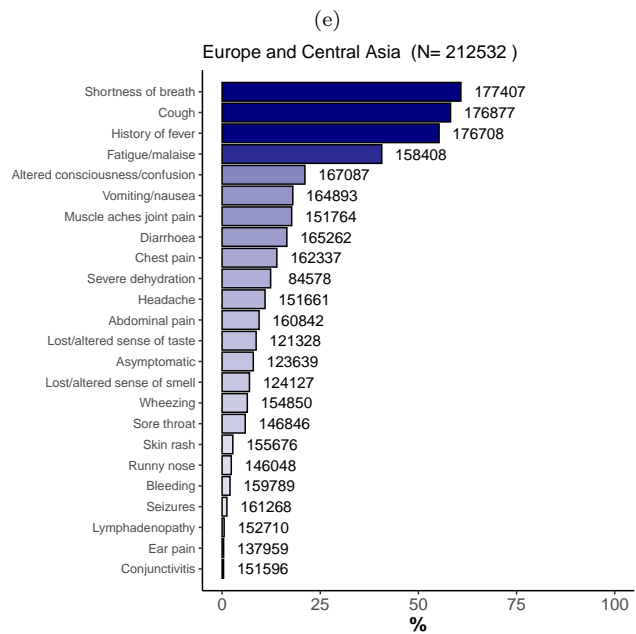
Figure 8: Symptoms recorded at hospital presentation stratified by age group. Boxes show the proportion of individuals with each symptom. The size of each box is proportional to the number of individuals represented. N is the number of individuals included in the plot (this varies between plots due to data completeness. The numbers for panel c, e, f, i were patients who had informaton on at least one symptom).



In Figure 9, we present the frequencies of most common symptoms varied by regions. Each panel corresponds to a different region, and within region, symptoms that were present more often correspond to higher y-axis coordinates. To improve visualization, transparency decreases with increasing frequency.

Figure 9: Symptoms recorded at hospital presentation stratified by region. N next to each bar represents the number of patients recorded.





Comorbidities and other concomitant conditions at admission

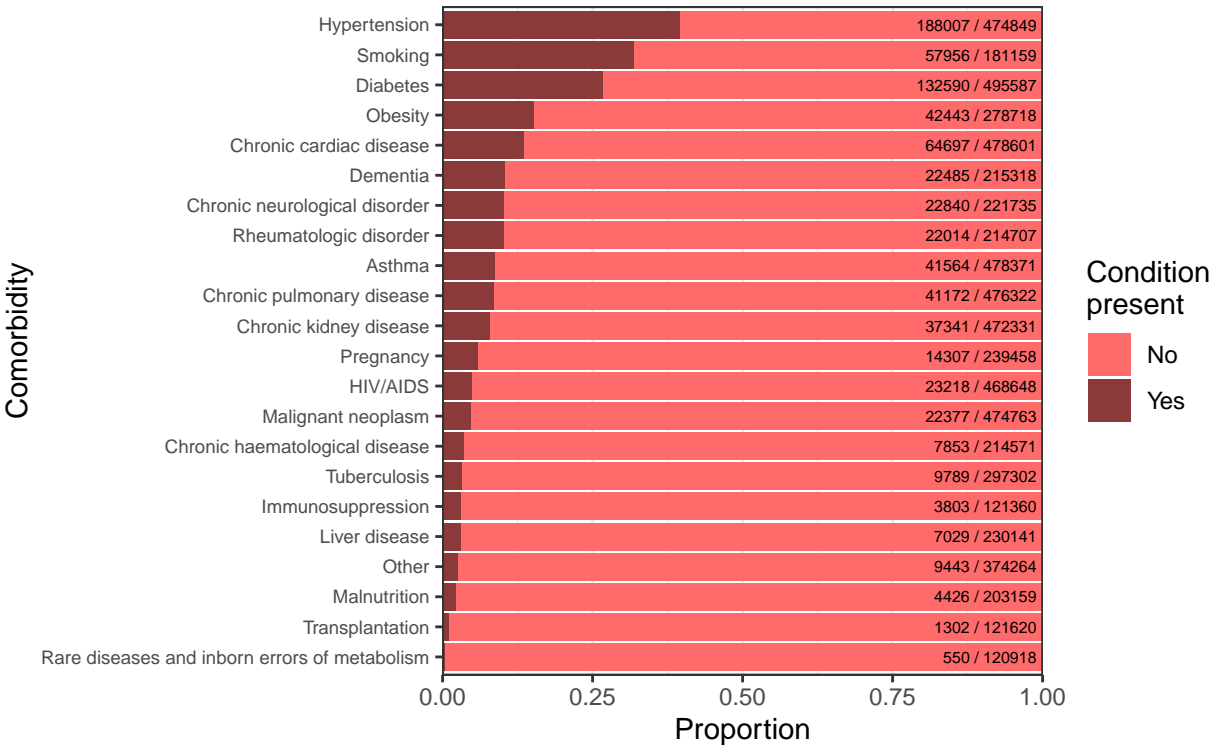
Information is available on at least 75% of cases for diabetes, chronic pulmonary disease, chronic kidney disease, asthma, malignant neoplasm, cardiac chronic disease, HIV/AIDS, and hypertension (Table 4). Conditions present in at least 10% of cases are hypertension (31% of those reported), diabetes (22%), chronic cardiac disease (11%) (Figure 10a). Combinations of the five most prevalent conditions are presented in Figure 10b.

Table 4: Prevalence of comorbidities.

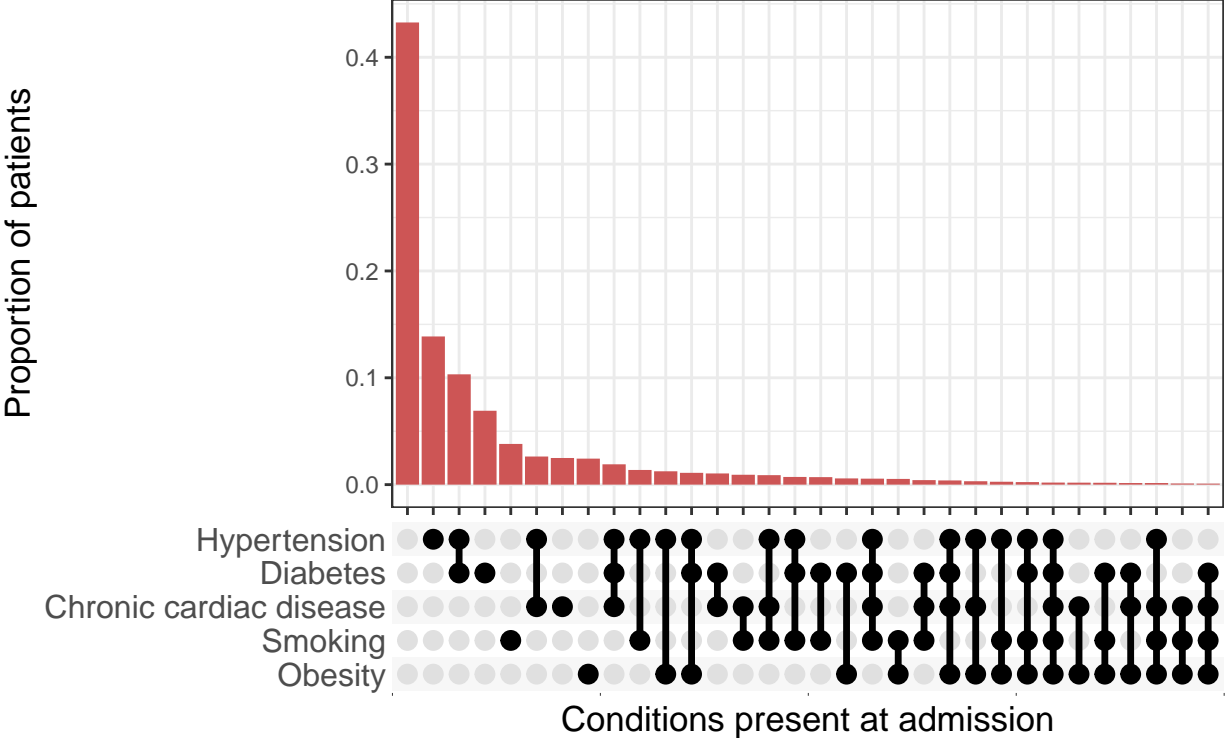
Comorbidities	Present	Absent	Unknown
Hypertension	188007 (0.31)	286842 (0.47)	139648 (0.23)
Diabetes	132590 (0.22)	362997 (0.59)	118910 (0.19)
Chronic cardiac disease	64697 (0.11)	413904 (0.67)	135896 (0.22)
Smoking	57956 (0.09)	123203 (0.2)	433338 (0.71)
Obesity	42443 (0.07)	236275 (0.38)	335779 (0.55)
Asthma	41564 (0.07)	436807 (0.71)	136126 (0.22)
Chronic pulmonary disease	41172 (0.07)	435150 (0.71)	138175 (0.22)
Chronic kidney disease	37341 (0.06)	434990 (0.71)	142166 (0.23)
HIV/AIDS	23218 (0.04)	445430 (0.72)	145849 (0.24)
Chronic neurological disorder	22840 (0.04)	198895 (0.32)	392762 (0.64)
Dementia	22485 (0.04)	192833 (0.31)	399179 (0.65)
Malignant neoplasm	22377 (0.04)	452386 (0.74)	139734 (0.23)
Rheumatologic disorder	22014 (0.04)	192693 (0.31)	399790 (0.65)
Pregnancy	14307 (0.02)	225151 (0.37)	71624 (0.12)
Tuberculosis	9789 (0.02)	287513 (0.47)	317195 (0.52)
Other	9443 (0.02)	364821 (0.59)	240233 (0.39)
Chronic haematological disease	7853 (0.01)	206718 (0.34)	399926 (0.65)
Liver disease	7029 (0.01)	223112 (0.36)	384356 (0.63)
Malnutrition	4426 (0.01)	198733 (0.32)	411338 (0.67)
Immunosuppression	3803 (0.01)	117557 (0.19)	493137 (0.8)
Transplantation	1302 (0)	120318 (0.2)	492877 (0.8)
Rare diseases and inborn errors of metabolism	550 (0)	120368 (0.2)	493579 (0.8)

Figure 10: Comorbidities and other concomitant conditions

(a) Frequency of comorbidities or other concomitant conditions seen at admission amongst COVID-19 patients. Bars are annotated with a fraction representing the number of patients presenting with this comorbidity over the number of patients for whom presence or absence of this comorbidity was recorded.

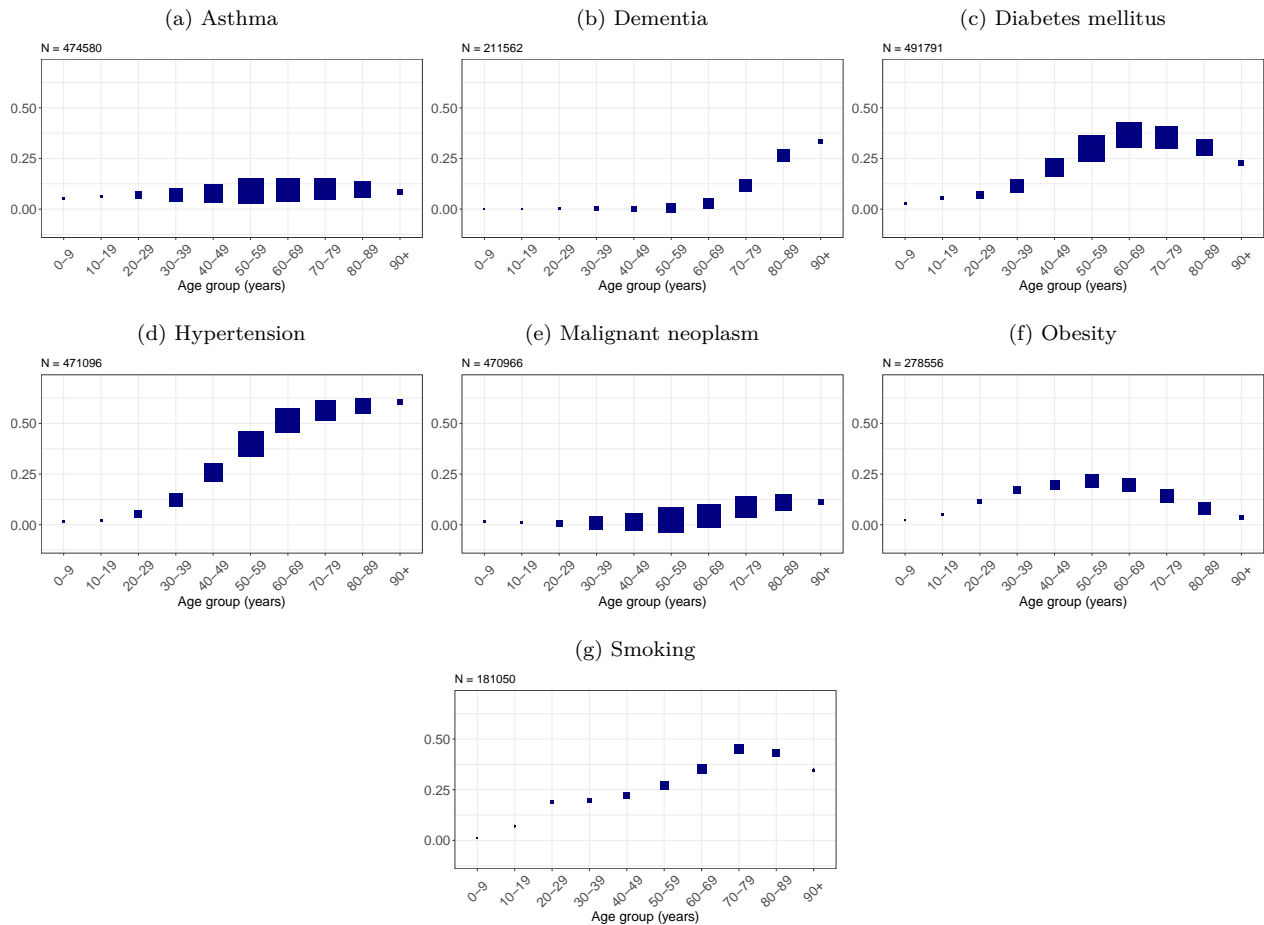


(b) The distribution of combinations of the five most common such conditions, amongst all patients for whom these data were recorded. Filled and empty circles below the x-axis indicate the presence or absence of each comorbidity.



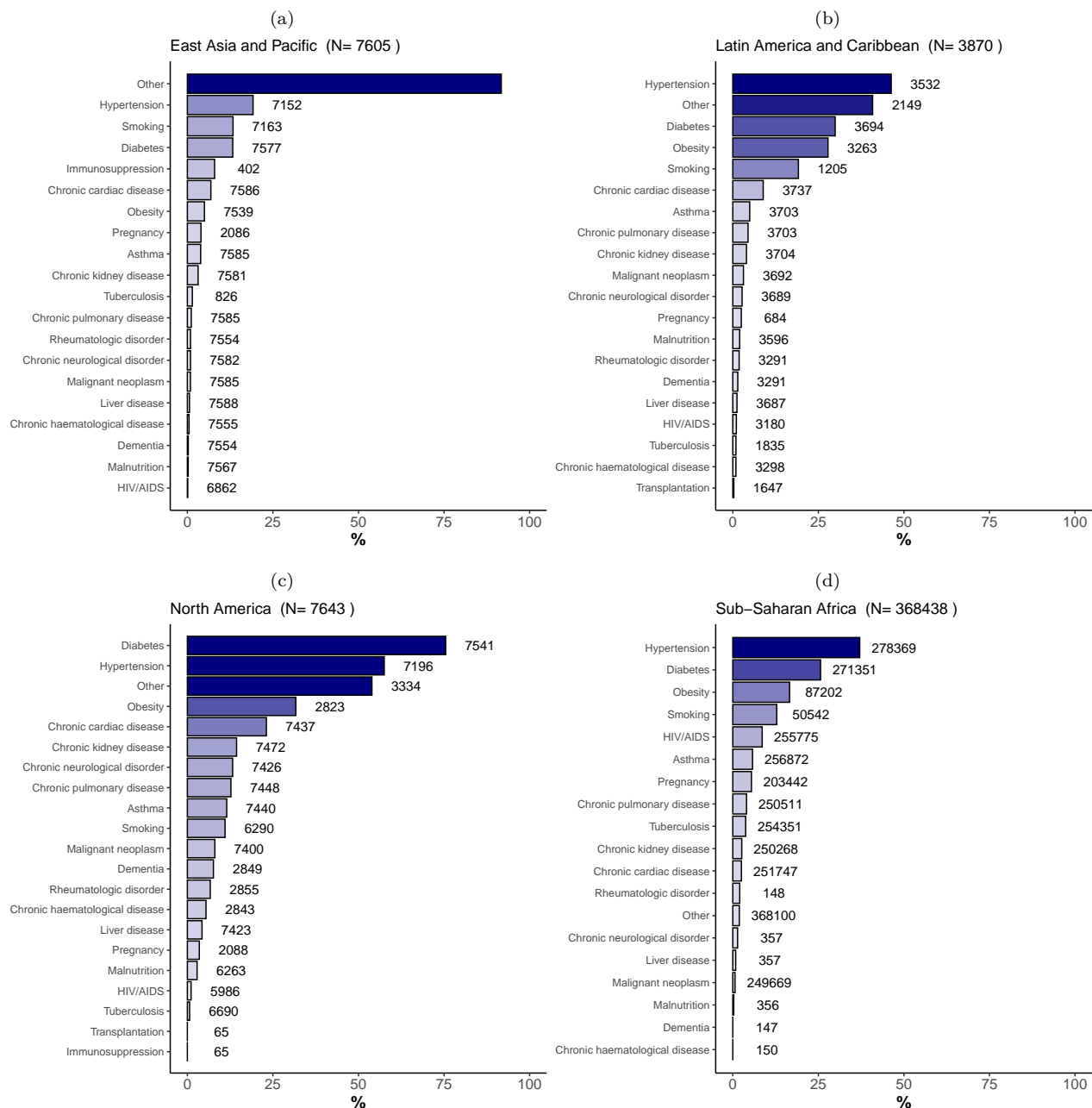
The age distribution of the most frequent concomitant conditions is presented in Figure 11. Dementia and hypertension increase with age.

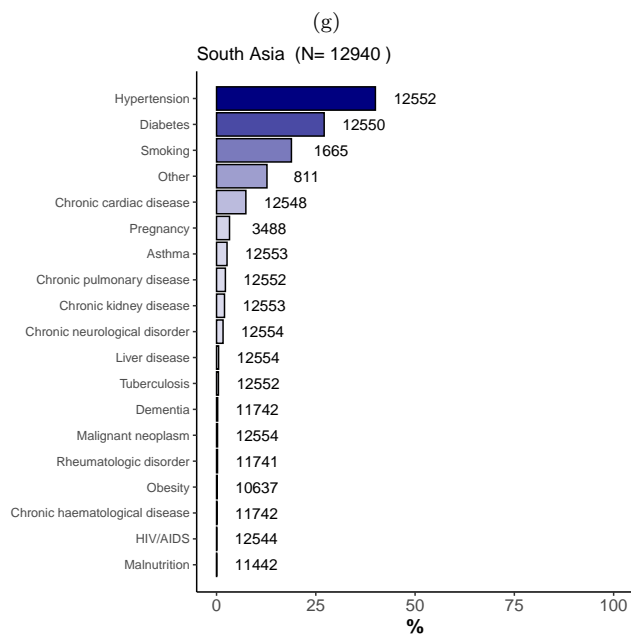
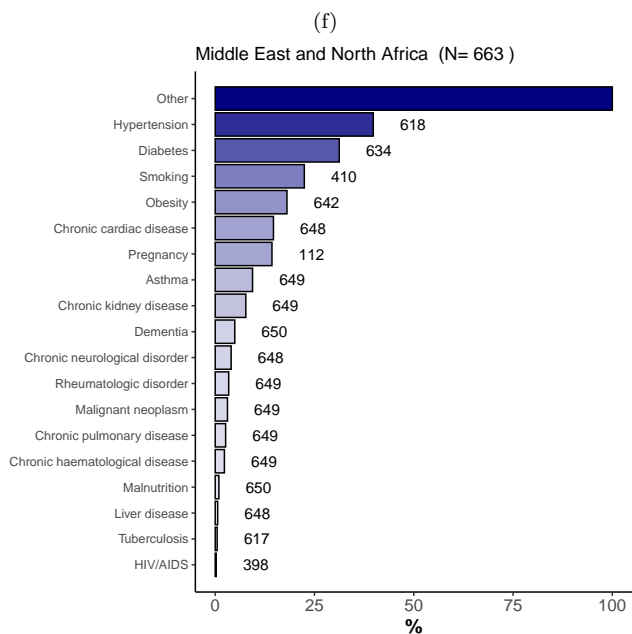
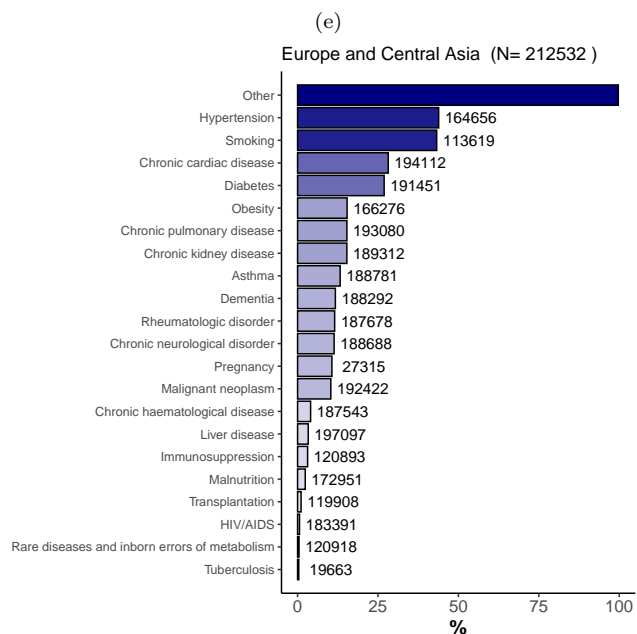
Figure 11: Comorbidities recorded at hospital presentation stratified by age group. Boxes show the proportion of individuals with each symptom. The size of each box is proportional to the number of individuals represented. N is the number of individuals included in the plot (this varies between plots due to data completeness).



In Figure 12, the frequencies of most common comorbidities in patients by regions. Each panel corresponds to a different region, and within region, more frequent comorbidities correspond to higher y-axis coordinates. To improve visualization, transparency decreases with increasing frequency.

Figure 12: Comorbidities recorded at hospital presentation stratified by region. N next to each bar represents the number of patients recorded.

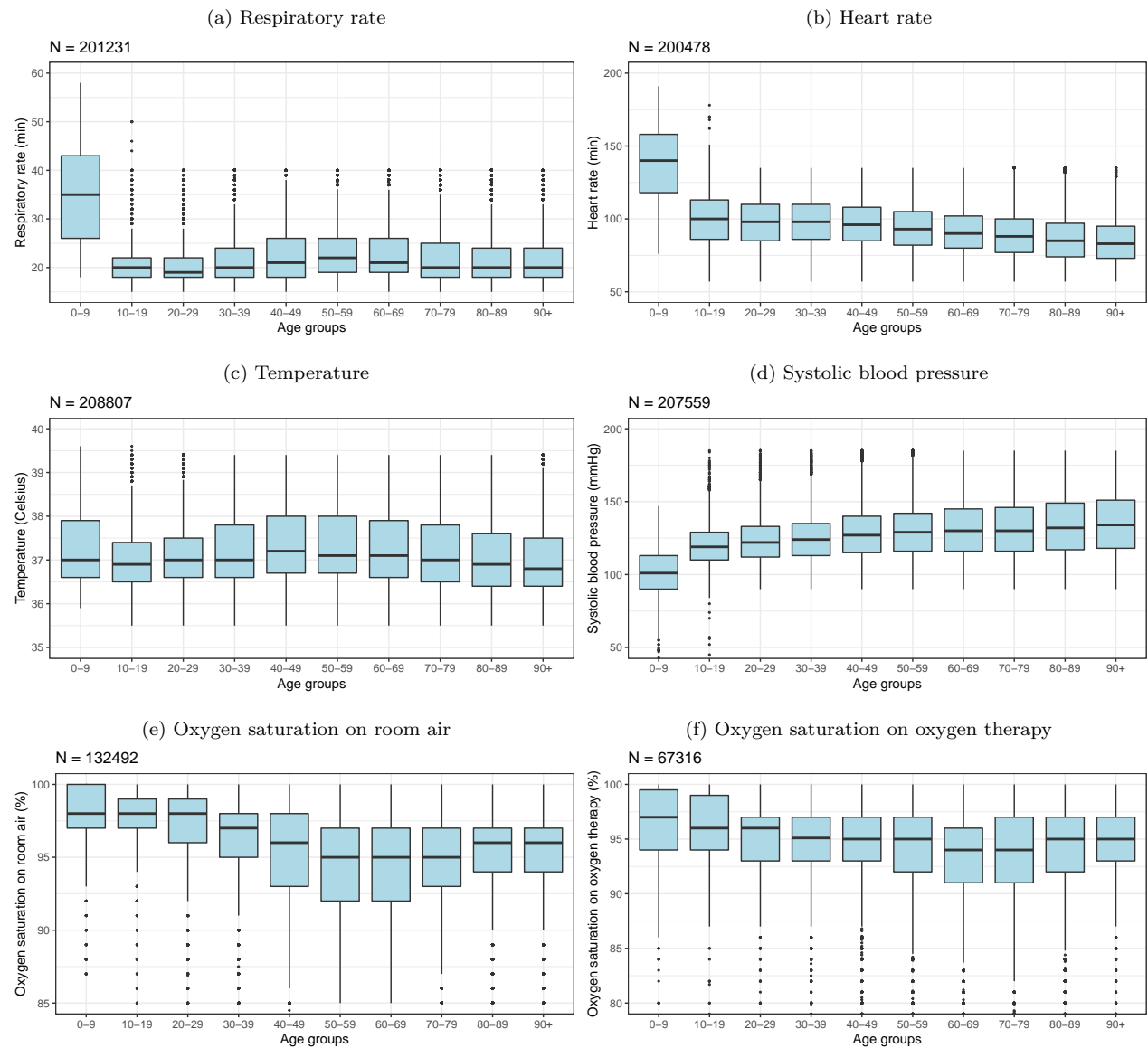




Vital signs

Oxygen saturation was recorded for 199808 patients at admission. Of these, 33.7% were on oxygen therapy, and 66.3% were not. At admission, the median oxygen saturation of those who were on oxygen therapy was 95%, whereas the median was 96% for those who were not on oxygen therapy (Figure 13 provides a breakdown of oxygen saturation by age and oxygen therapy status). Among those who were on oxygen therapy at admission ($N = 67316$), 34.8% had oxygen saturation <94 , and among those who were not on oxygen therapy at admission ($N = 132492$), 25.2% had oxygen saturation <94 . All vital signs are presented in Figure 13 by age.

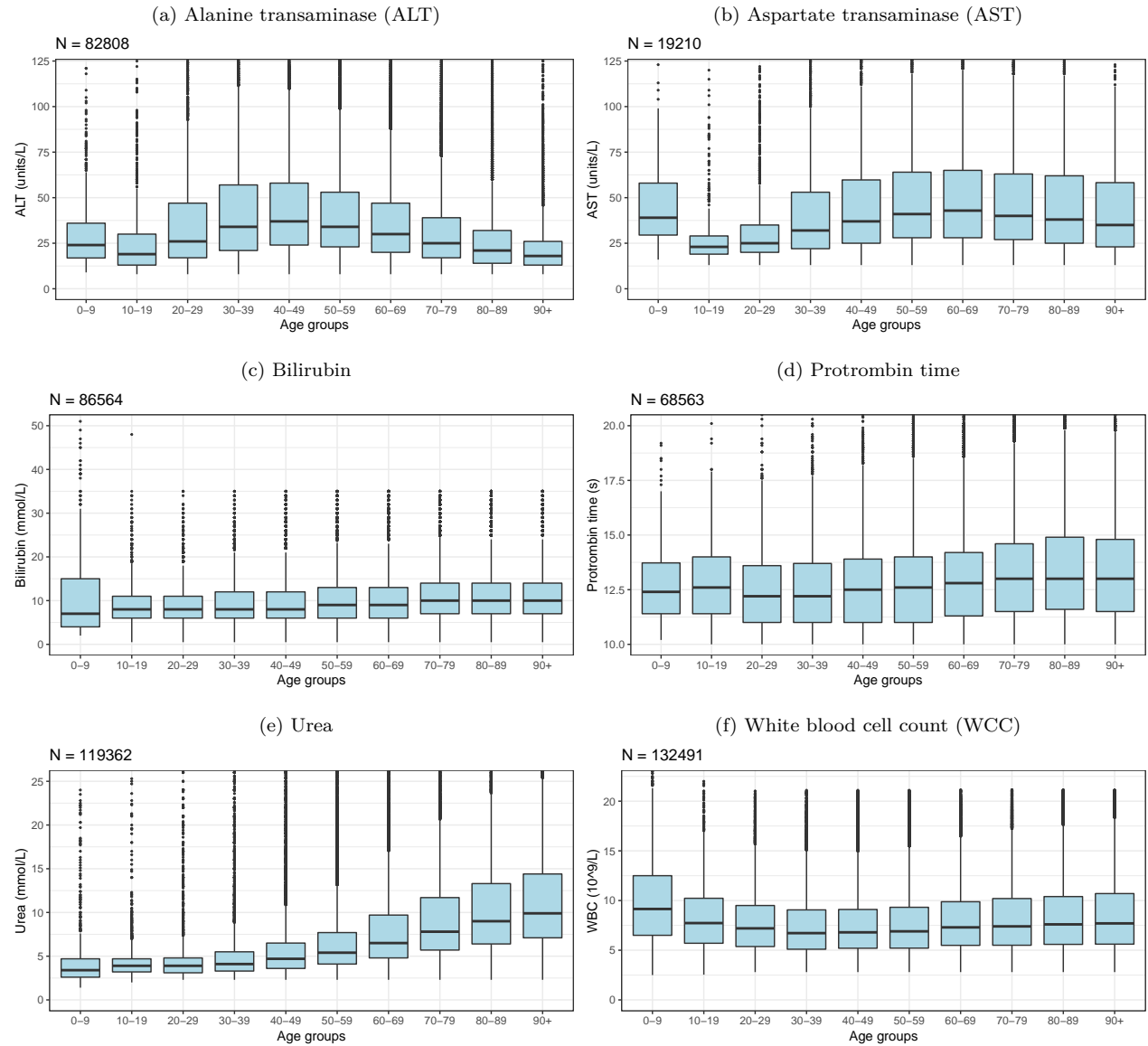
Figure 10: Box and whisker plots for observations at hospital presentation stratified by age group. N is the number of individuals included in the plot (this varies between plots due to data completeness). Dotted lines represent the threshold for normal vs abnormal for ≥ 10 years.

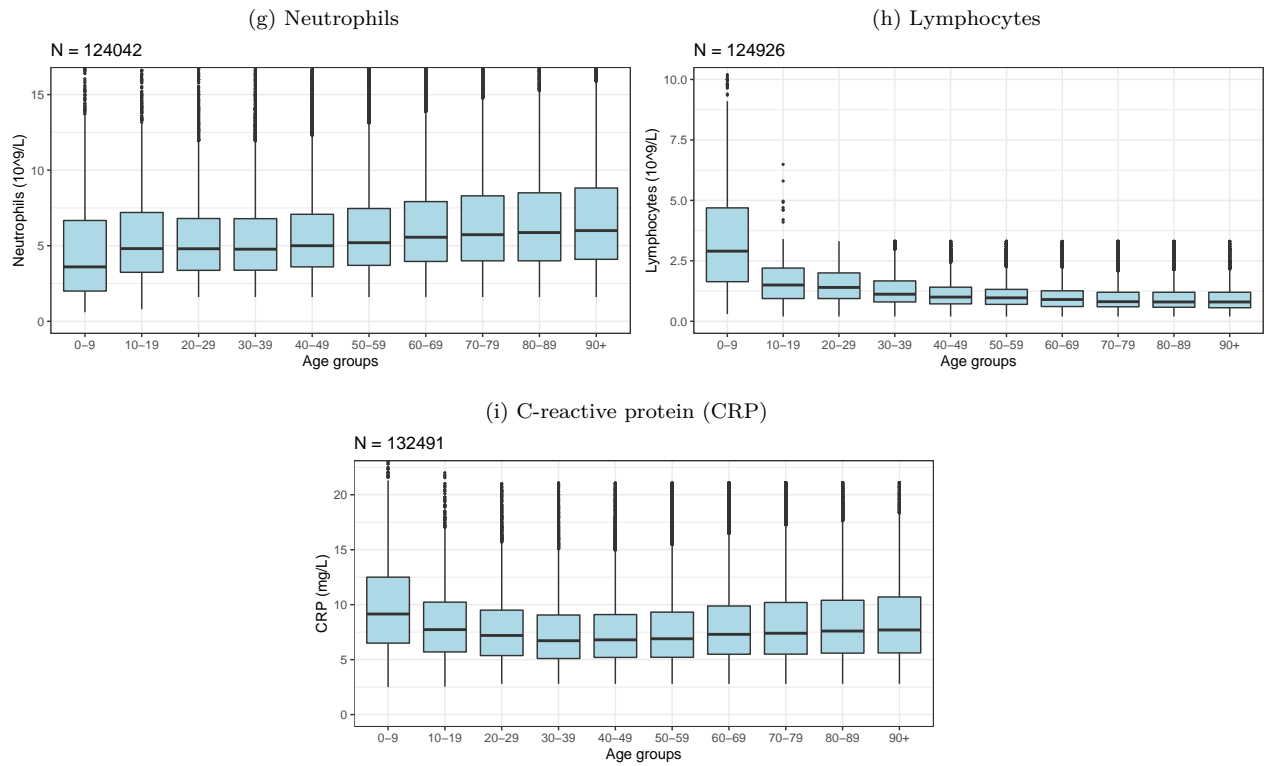


Laboratory values

Laboratory tests results are available for a minority of patients. They are summarised in Figure 14.

Figure 11: Box and whisker plots for laboratory results within 24 hours of hospital presentation stratified by age group. N is the number of individuals included in the plot (this varies between plots due to data completeness).





Treatment

Antibiotics were given to 213819/379319 (56.4%) patients, and 48791/582743 (8.4%) received antivirals. These treatment categories are not mutually exclusive since some patients receive multiple treatments - the denominators differ due to data completeness. Of 533368 patients with data available on oxygen supplementation within 24 hours from admission, 169336 (31.7%) received supplemental oxygen and 364032 (68.3%) did not. Throughout their stay in the hospital, 328004/605619 (54.2%) patients received some degree of oxygen supplementation; of these, 38560/394467 (9.8%) received NIV and 56246/601653 (9.3%) IMV.

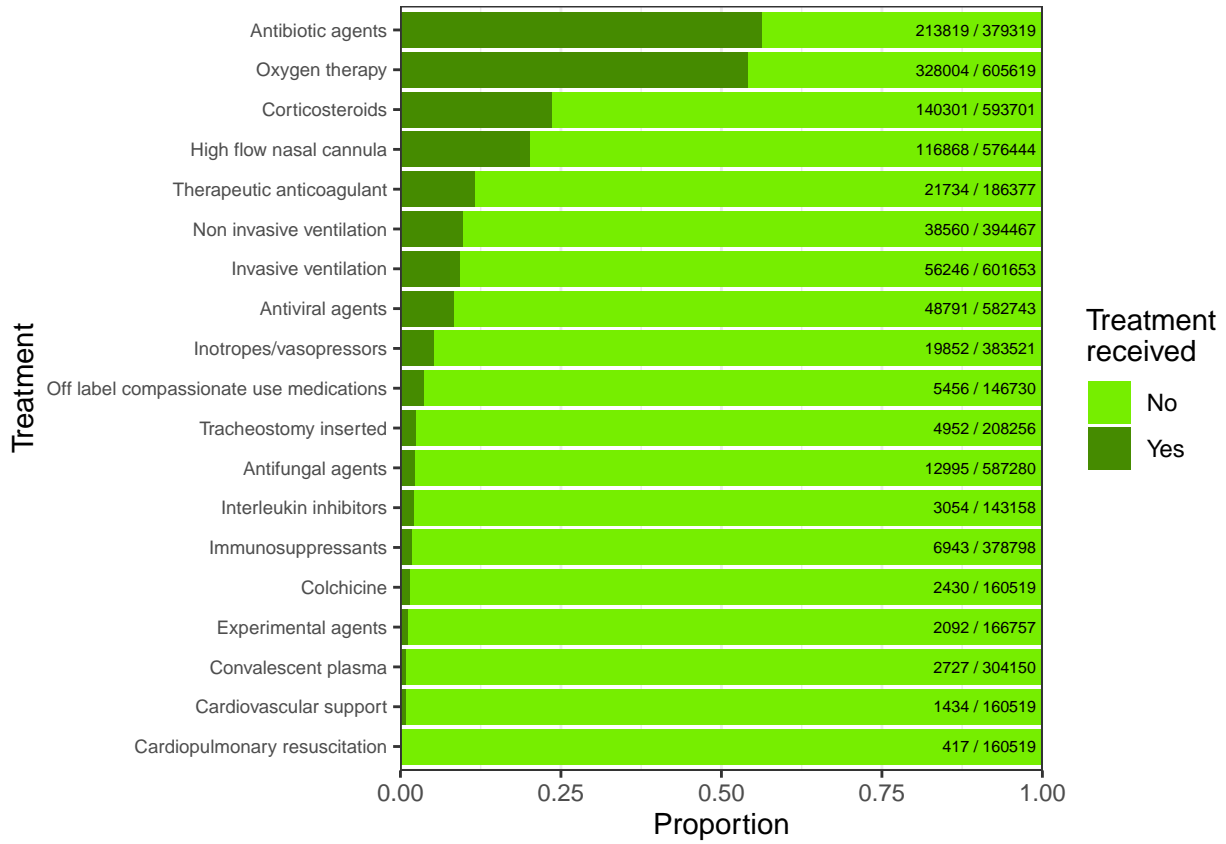
Corticosteroids were administered to 140301/593701 (23.6%) patients. This includes 23074/55110 (41.9%) of those who received IMV, 116974/308583 (37.9%) of those who had oxygen therapy but not IMV, and 20495/270295 (7.6%) of those who had no oxygen therapy. On 16 June, results for dexamethasone were released from the RECOVERY randomized controlled trial [20,21]. This trial found that dexamethasone reduced deaths for patients receiving IMV and oxygen therapy, but not among patients not receiving respiratory support. Of patients admitted since 16 June 2020, corticosteroids were given to 17760/41975 (42.3%) of those who received IMV, and 17496/230323 (7.6%) of those with no oxygen therapy.

Table 5: Treatment use. The counts presented for treatments include all cases, not only cases with complete details of treatments (as expressed in the summary). Oxygen therapy variable includes high flow nasal cannula, non-invasive ventilation, and invasive ventilation.

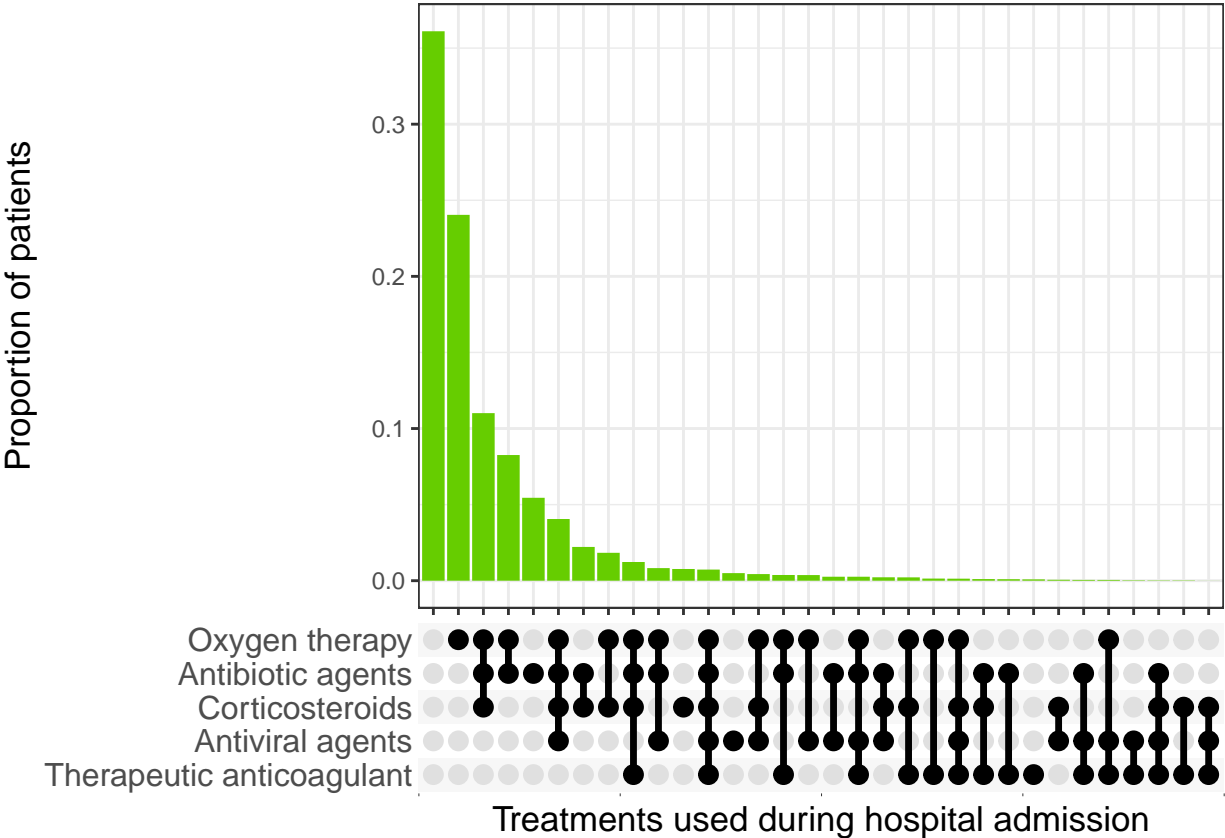
Treatments	Present	Absent	Unknown
Oxygen therapy	328004 (0.53)	277615 (0.45)	8878 (0.01)
Antibiotic agents	213819 (0.35)	165500 (0.27)	235178 (0.38)
Corticosteroids	140301 (0.23)	453400 (0.74)	20796 (0.03)
High flow nasal cannula	116868 (0.19)	459576 (0.75)	38053 (0.06)
Invasive ventilation	56246 (0.09)	545407 (0.89)	12844 (0.02)
Antiviral agents	48791 (0.08)	533952 (0.87)	31754 (0.05)
Non invasive ventilation	38560 (0.06)	355907 (0.58)	220030 (0.36)
Therapeutic anticoagulant	21734 (0.04)	164643 (0.27)	428120 (0.7)
Inotropes/vasopressors	19852 (0.03)	363669 (0.59)	230976 (0.38)
Antifungal agents	12995 (0.02)	574285 (0.93)	27217 (0.04)
Immunosuppressants	6943 (0.01)	371855 (0.61)	235699 (0.38)
Off label/compassionate use medications	5456 (0.01)	141274 (0.23)	467767 (0.76)
Tracheostomy inserted	4952 (0.01)	203304 (0.33)	406241 (0.66)
Interleukin inhibitors	3054 (0)	140104 (0.23)	471339 (0.77)
Convalescent plasma	2727 (0)	301423 (0.49)	310347 (0.51)
Colchicine	2430 (0)	158089 (0.26)	453978 (0.74)
Experimental agents	2092 (0)	164665 (0.27)	447740 (0.73)
Cardiovascular support	1434 (0)	159085 (0.26)	453978 (0.74)
Cardiopulmonary resuscitation	417 (0)	160102 (0.26)	453978 (0.74)

Figure 15: Treatments in the entire population

(a) Proportions of patients receiving each treatment. Bars are annotated with a fraction indicating the number of individuals receiving each treatment over the number for which this information was non-missing. Oxygen therapy variable includes high flow nasal cannula, non-invasive ventilation, and invasive ventilation.



(b) Distribution of combinations of antimicrobial treatments and steroids administered during hospital stay, across all patients with completed hospital stay and recorded treatment data. Oxygen therapy variable includes high flow nasal cannula, non-invasive ventilation, and invasive ventilation.



Intensive Care and High Dependency Unit Treatments

Of the 614497 patients with data on ward admissions available, a total of 92302 (15%) were admitted at some point of their illness into an intensive care unit (ICU) or high dependency unit (HDU), among which, 27080 (29.3%) on the day of admission.

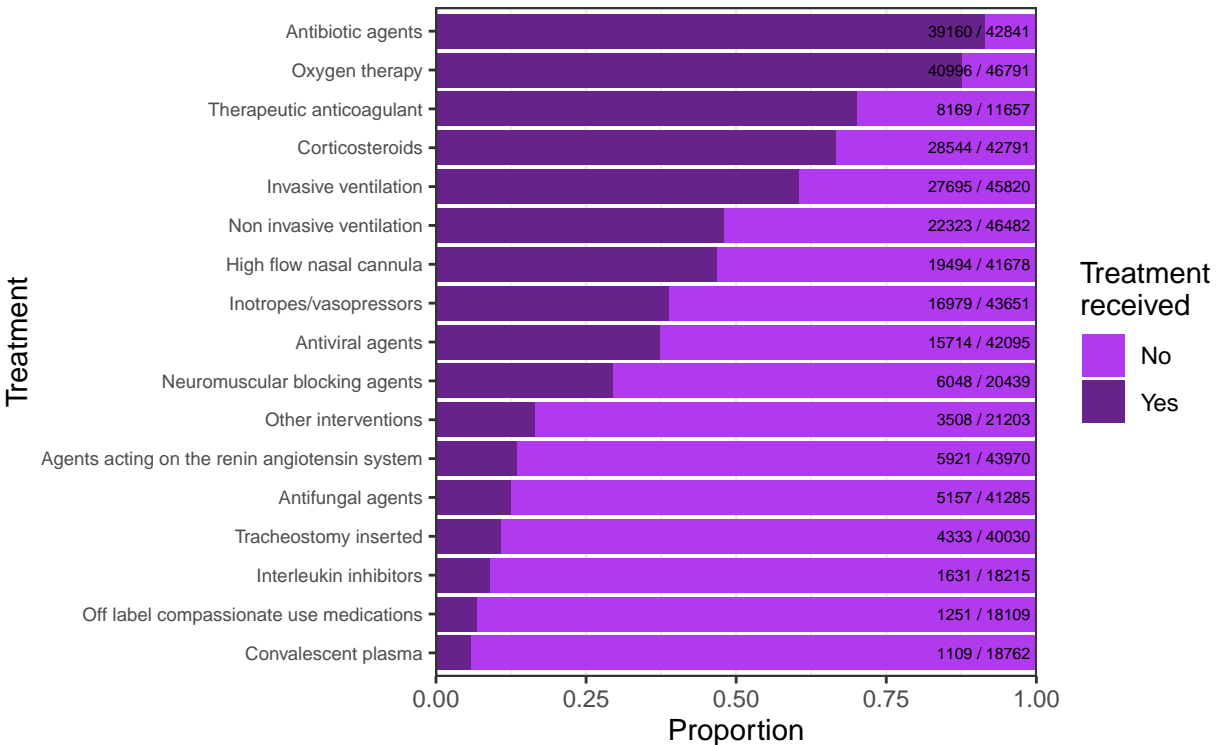
The range of treatments received whilst in ICU/HDU is presented in Figure 15 a and b. Of the patients admitted into ICU/HDU, 39160/42841 (91.4%) received antibiotics and 15714/42095 (37.3%) antivirals. 40996/46791 (87.6%) received some degree of oxygen supplementation, of which, 22323/46482 (48%) received NIV and 27695/45820 (60.4%) IMV.

A total of 38560 patients received non-invasive mechanical ventilation (NIV). The mean and median number of days from admission to receiving NIV were 2.3 days and 1 days respectively (SD: 3.6 days) – estimated from records on cases with complete records on dates of hospital admission and NIV onset (N = 25275). The mean and median durations for NIV were 3.5 days and 2 days respectively (SD: 3.1 days) – estimated based on only those cases which have complete NIV duration records (N = 5281).

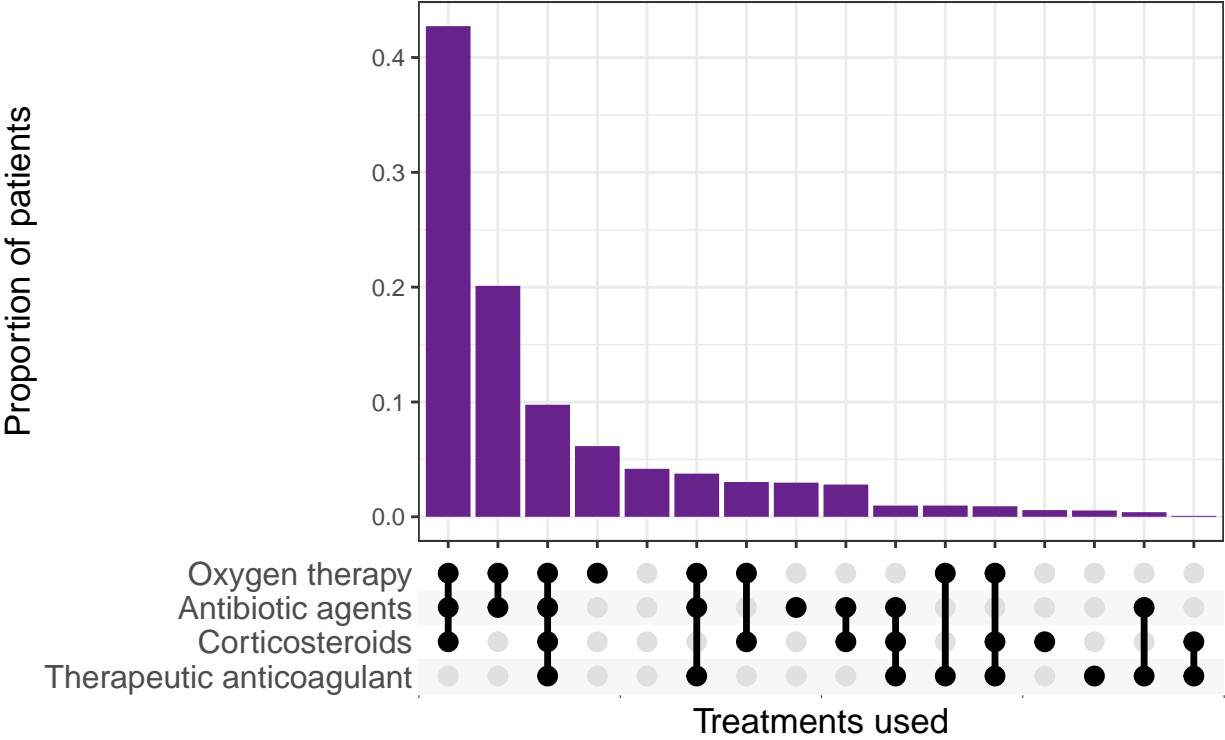
A total of 56246 patients received invasive mechanical ventilation (IMV). The mean and median durations from admission to receiving IMV were 3.4 days and 1 days respectively (SD: 4.8 days) – estimated from records on cases with complete records on dates of hospital admission and IMV onset (N = 17735). The mean, median and SD for the duration of IMV – estimated based on all 25854 cases with complete records on IMV stays – were 9.6 days, 7 days and 9 days respectively.

Figure 16: Treatments in the ICU/HDU population

(a) Proportions of patients receiving each treatment. Bars are annotated with a fraction indicating the number of individuals receiving each treatment over the number for which this information was non-missing. Oxygen therapy variable includes high flow nasal cannula, non-invasive ventilation, and invasive ventilation.



(b) Distribution of combinations of treatments administered during ICU/HDU stay. Filled and empty circles below the x-axis indicate treatments that were and were not administered respectively. Oxygen therapy variable includes high flow nasal cannula, non-invasive ventilation, and invasive ventilation.



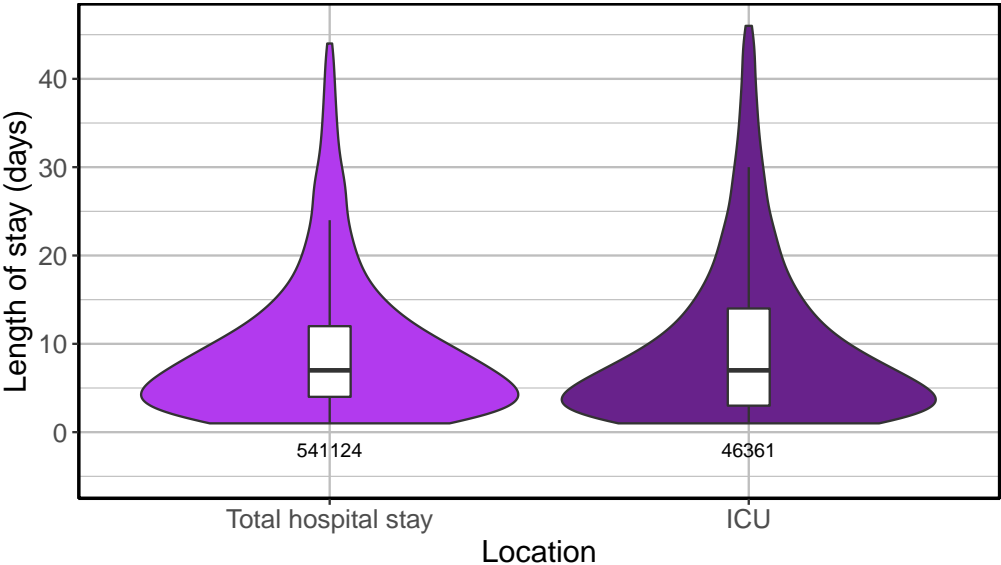
Key time variables

The key time variables are presented in Table 6. Patients tend to come to the hospital relatively early into their illness with a mean of 5.4 days and a median of 5 days from symptoms onset. 54.1% of ICU/HDU admissions occur within the first day at the hospital. The mean and median duration of hospital stay are 9.1 and 6 days, respectively. The duration of stay in ICU/HDU had a mean of 9.4 days and a median of 6 (SD: 9.3 days) – estimated on only those cases with complete records for ICU/HDU duration or ICU/HDU start/end dates (N = 49358).

Table 6: Key time variables. SD: Standard deviation; IQR: Interquartile range. Outliers (values greater than 120) were excluded prior to the computation of estimates.

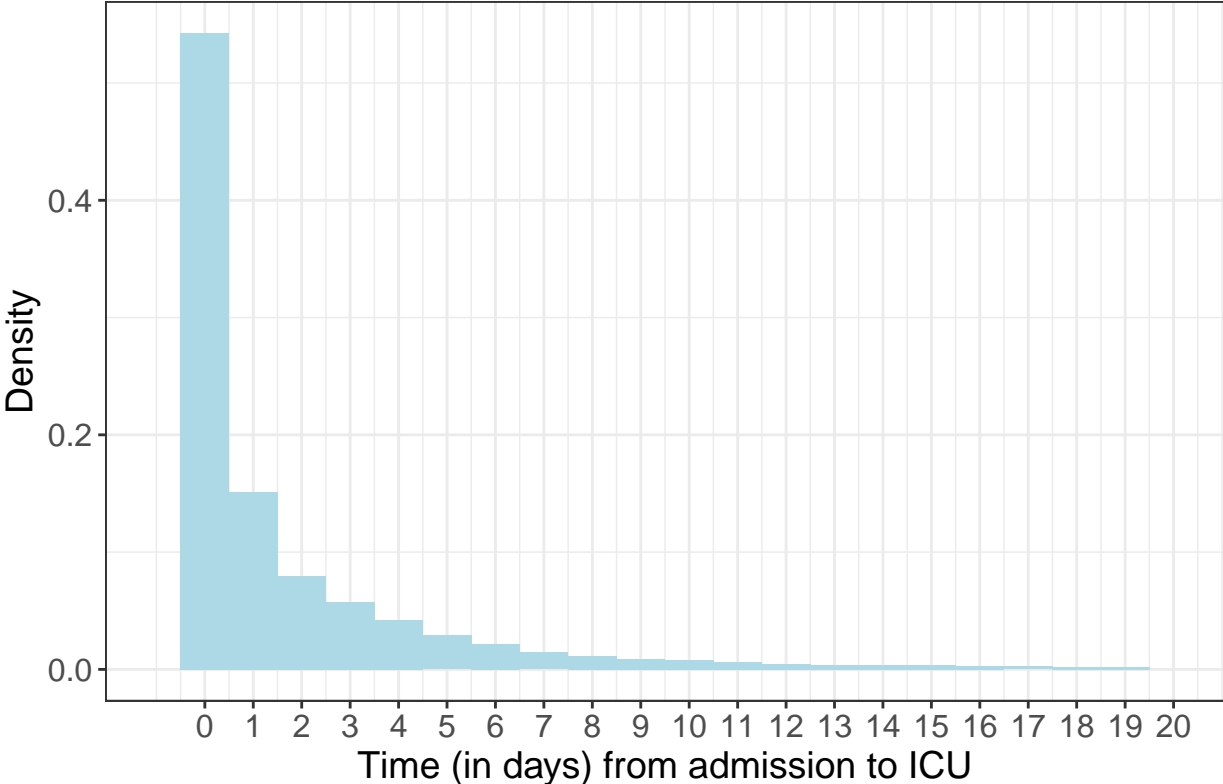
Time (in days)	Mean	SD	Median IQR
Length of hospital stay	9.1	8.3	7 3-12
Symptom onset to admission	5.4	4.8	5 1-8
Admission to ICU entry	1.8	3.4	0 0-2
Duration of ICU	9.4	9.3	6 3-13
Admission to IMV	3.4	4.8	1 0-5
Duration of IMV	9.6	9.0	7 2-14
Admission to NIV	2.3	3.6	1 0-3
Duration of NIV	3.5	3.1	2 1-5

Figure 17: Distribution of lengths of stay for patients who were admitted to ICU/HDU: total length of stay for this group and length of stay within intensive care. This only includes cases with reported completed stays. The coloured areas indicate the kernel probability density of the observed data and the box plots show the median and interquartile range of the variable of interest.



The distribution of the number of days from admission to ICU admission is shown in Figure 18.

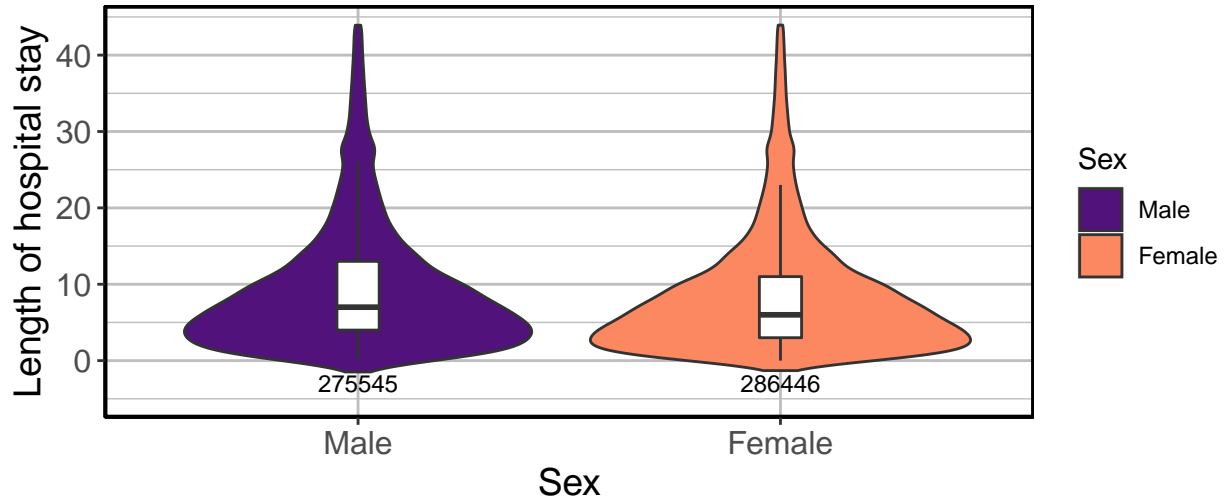
Figure 18: Distribution of time (in days) from hospital admission to ICU admission. The figure displays data on only those cases with a reported ICU start date.



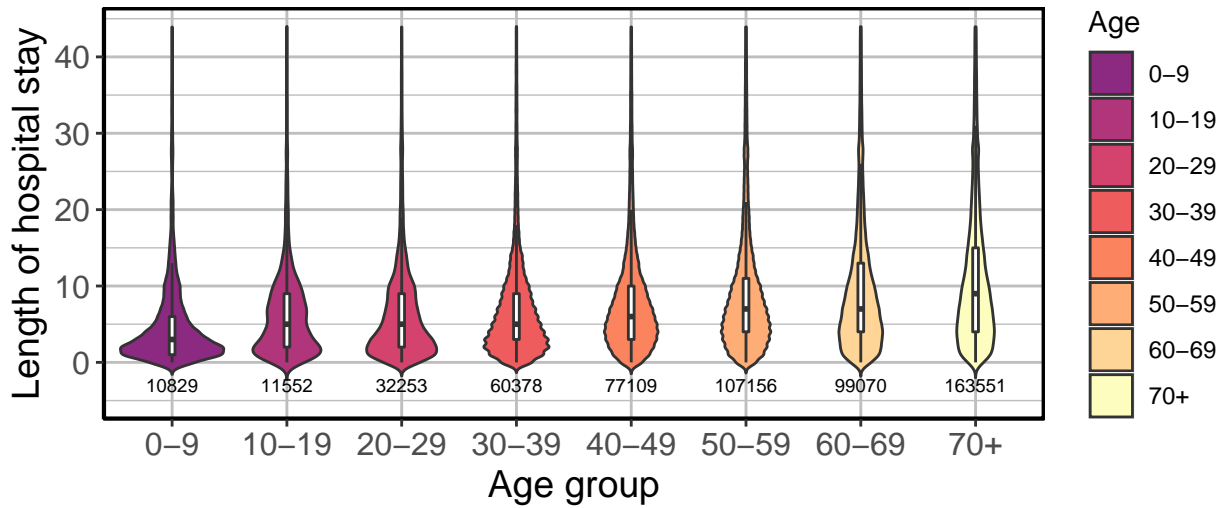
The observed mean duration for the number of days from hospital admission to outcome (death or discharge) was 9, with SD 8.1 days and a median of 7 days. These estimates are based on all cases which have complete records on length of hospital stay ($N = 538382$). The distributions of length of hospital stay are presented In Figure 19a according to sex and 19b by patient age group.

Figure 19: Distribution of length of hospital stay. This only includes cases with reported outcomes. The coloured areas indicate the kernel probability density of the observed data and the box plots show the median and interquartile range of the variable of interest.

(a) Distribution of length of hospital stay, according to sex.



(b) Distribution of length of hospital stay, according to age.



Outcomes

Outcomes are recorded for 556928 patients (90.6%), consisting of 416213 recoveries and 140715 deaths. Outcome records are unavailable for 56143 patients.

The overall estimated case fatality ratio (CFR) is 25.3% (95% CI 25.2-25.4) and is 38.7% (95% CI 38.3-39) for patients admitted to ICU/HDU - calculated out of those with data on outcome.

Figure 20: The distribution of patient status by number of days after admission. Patients with 'unknown' status have left the site at the time of report but have unknown outcomes due to missing data.

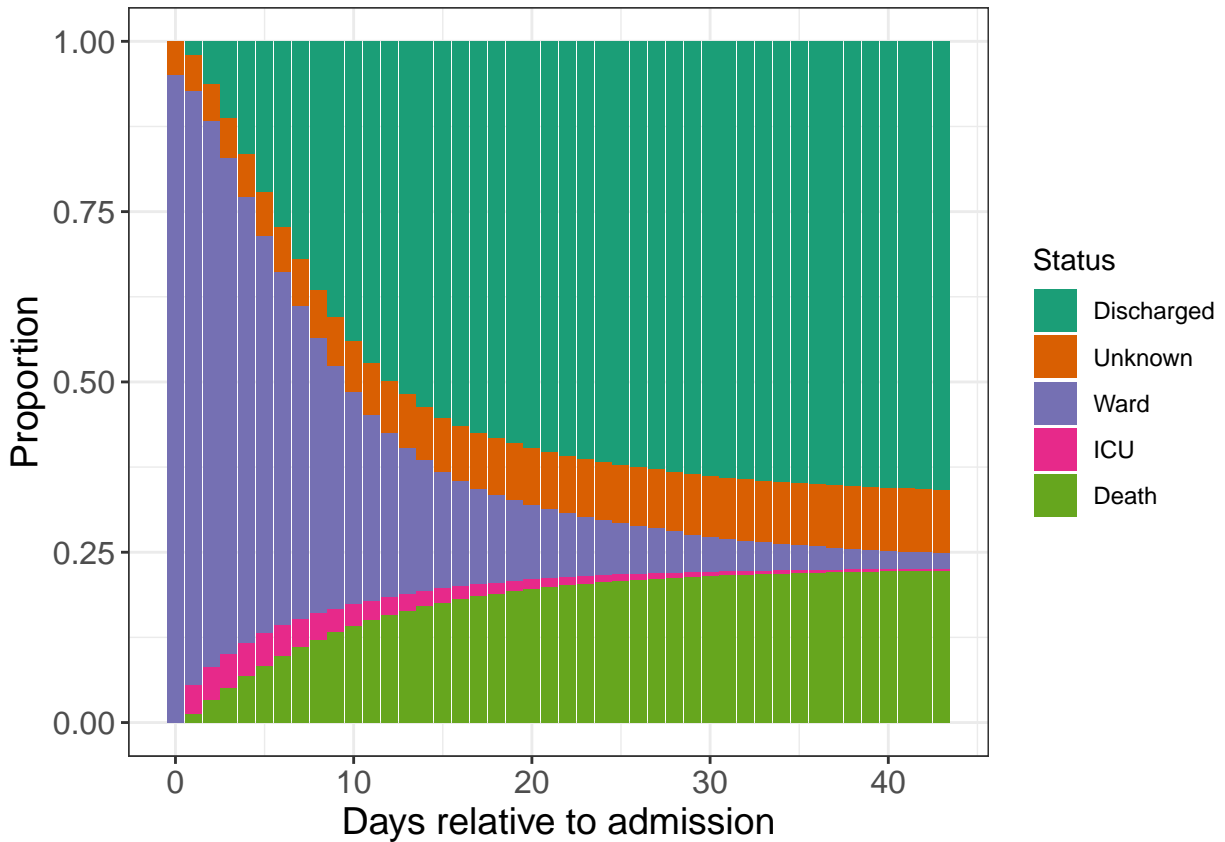
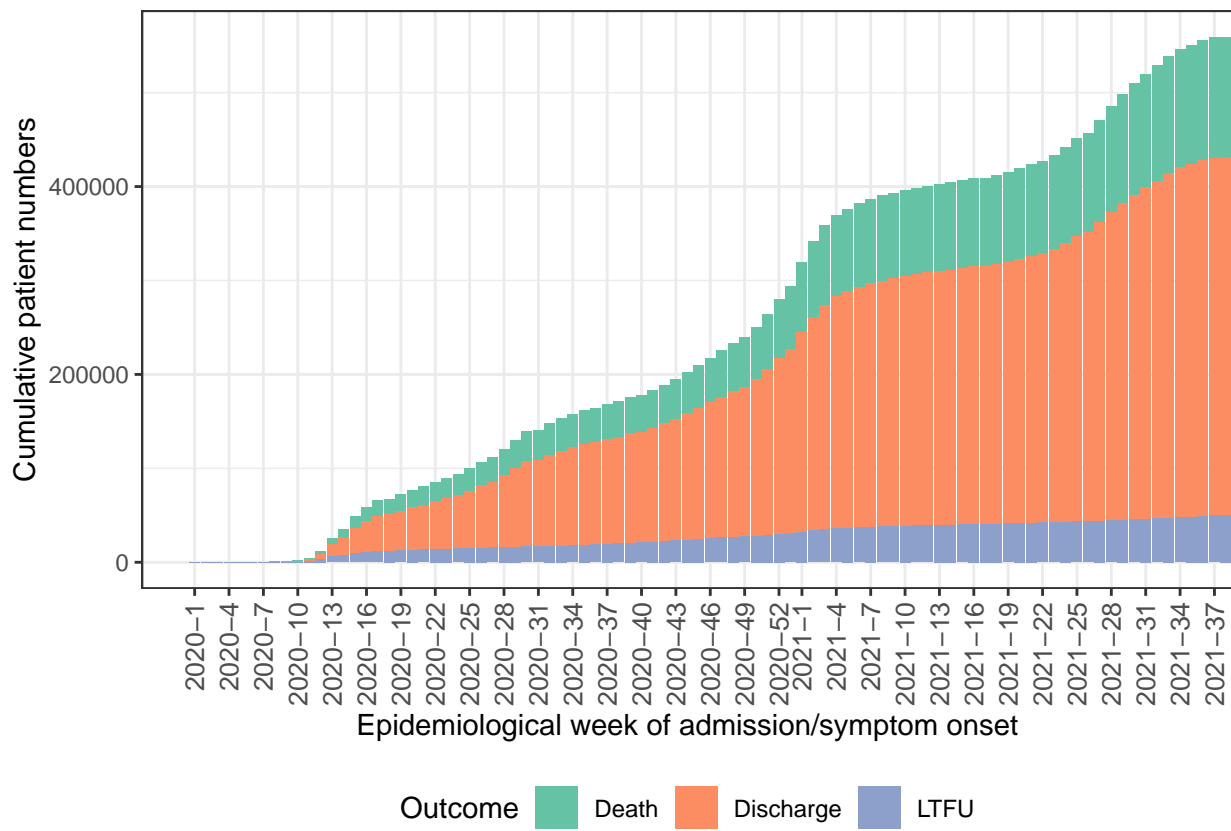


Figure 21: Cumulative patient numbers and outcomes by epidemiological week of admission (or, for patients infected in hospital, of symptom onset).



Discussion and conclusions

COVID-19 has tested the effectiveness of ISARIC's operating model: a global, open-source, collaborative approach set up 10 years ago to prevent illness and deaths from infectious disease outbreaks.

In January 2020, ISARIC launched its COVID-19 Clinical Characterisation Protocol (CCP) [<https://isaric.org/research/covid-19-clinical-research-resources/clinical-characterisation-protocol-ccp/>] and Case Report Form (CRF) [<https://isaric.org/research/covid-19-clinical-research-resources/covid-19-crf/>] as well as a free data management platform for researchers to upload their clinical data, globally. The ISARIC COVID-19 CCP database was open and publicly accessible from late January 2020, when less than a thousand COVID-19 cases had been reported globally; by mid-February 2020, the first patient record was successfully uploaded to the platform; by mid-March 2020, the platform had ten thousand records.

Now, 22 months into the pandemic, with more than half-a-million records, the ISARIC clinical data platform has grown to become the largest international individual patient dataset of COVID-19 hospitalised cases. ISARIC is a model of global peer-to-peer collaboration, with contributions by 1669 sites in 64 countries, with similar representations of patients from high-income and low- and middle-income countries.

This report describes the features of COVID-19 patients in the entire cohort, made from cases accrued over 22 months with different contributions from various countries. Everyone can trace the evolution over time of the database through 15 previous versions of this report [<https://isaric.org/research/covid-19-clinical-research-resources/evidence-reports/>]. In addition, specific questions regarding clinical presentations, risks factors for outcomes, and trends are addressed through ad-hoc analyses.

Partners can submit ad-hoc request to perform analyses, to access the 700,000 case-based dataset, by using our Statistical Analysis Plan form (SAP; <https://isaric.org/research/isaric-partner-analysis-frequently-asked-questions/>). Once a SAP has been submitted, our statistical team assesses the plan for quality of research and feasibility of data analysis. Then, our clinical team provides feedback on clinical relevance and overlap with other analyses. Once this process has been completed, the SAP is sent to all ISARIC collaborators for the opportunity to review. This initial peer review process ensures that research is of the utmost quality and it helps encourage a truly participatory approach.

All ISARIC contributors are invited to participate in analyses through review and input on the SAP and the resulting publication. The outputs of our joint work are disseminated as widely as possible to inform patient care and public health policy. ISARIC aims to include the names of all those who contribute data in the cited authorship of publications, subject to the submission of contact details and confirmation of acceptance of the final manuscript within the required timelines, per ICMJE policies and the ISARIC publication policy.

What have our partners achieved Using the ISARIC and ISARIC4C databases, our partners have produced a broad range of evidence. More than 50 reports and manuscripts have been published to date, and a further 25 are in progress or under peer-review. <https://isaric.org/document-library/> , <https://isaric4c.net/outputs/> and <https://isaric.org/research/covid-19-clinical-research-resources/accessing-covid-19-clinical-data/approved-uses-of-platform-data/>.

True international collaboration during a pandemic is key to putting data into action. ISARIC partners have achieved this objective, and the results are shown in this special issue with half a million patient records.

Acknowledgement

This report is made possible through the efforts and expertise of the staff collecting data at our partner institutions across the globe, and the ISARIC Team. For a list of partners and team members, please visit [rg/research/covid-19-clinical-research-resources/covid-19-data-management-hosting/covid19-clinical-data-contributors-list/](https://isaric.org/research/covid-19-clinical-research-resources/covid-19-data-management-hosting/covid19-clinical-data-contributors-list/).

References

- [1]WHO novel coronavirus 2019 (hyperlink to <https://www.who.int/emergencies/diseases/novel-coronavirus-2019>)
- [2]ISARIC Partner Analysis frequently asked questions (hyperlink to <https://isaric.org/research/isaric-partner-analysis-frequently-asked-questions/>)
- [3]International Severe Acute Respiratory and Emerging Infection Consortium, World Health Organization. ISARIC/WHO Clinical Characterisation Protocol for Severe Emerging Infections, version 3.2: ISARIC, 2020.
- [4]International Severe Acute Respiratory and Emerging Infection Consortium. COVID-19 CRF. Available at: <https://isaric.tghn.org/COVID-19-CRF/>.
- [5]Huang C, Wang Y, Li X, et al. Clinical features of patients infected with 2019 novel coronavirus in Wuhan, China. *Lancet* 2020; 395(10223): 497-506.
- [6]Yang X, Yu Y, Xu J, et al. Clinical course and outcomes of critically ill patients with SARS-CoV-2 pneumonia in Wuhan, China: a single-centered, retrospective, observational study. *Lancet Respir Med* 2020; 8(5): 475-81.
- [7]Zhou F, Yu T, Du R, et al. Clinical course and risk factors for mortality of adult inpatients with COVID-19 in Wuhan, China: a retrospective cohort study. *Lancet* 2020; 395(10229): 1054-62.
- [8]Dunning JW, Merson L, Rohde GGU, et al. Open source clinical science for emerging infections. *Lancet Infect Dis* 2014; 14(1): 8-9.
- [9]ISARIC clinical characterisation group. Global outbreak research: harmony not hegemony. *Lancet Infect Dis* 2020; 20(7): 770-2.
- [10]IDDO website (hyperlink to www.iddo.org)
- [11]Clinical Data Interchange Standards Consortium (hyperlink to <https://www.cdisc.org/standards/foundational/sdtm>)
- [12]R Core Team (2020). R: A language and environment for statistical computing. R Foundation for Statistical Computing, Vienna, Austria. URL: <https://www.R-project.org/>.
- [13]Wickham et al. (2019). Welcome to the tidyverse. *Journal of Open Source Software*, 4(43), 1686, <https://doi.org/10.21105/joss.01686>
- [14]Adler et al. (2021). ff: Memory-Efficient Storage of Large Data on Disk and Fast Access Functions, <https://cran.r-project.org/web/packages/ff/index.html>
- [15]Wickham H (2021). dplyr: Data Table Back-End for ‘dplyr’, <https://cran.r-project.org/web/packages/dplyr/index.html>
- [16]Wickham H (2016). ggplot2: Elegant Graphics for Data Analysis. Springer-Verlag New York. ISBN 978-3-319-24277-4, <https://ggplot2.tidyverse.org>.
- [17]Ahlmann-Eltze C (2020). ggupset: Combination Matrix Axis for ‘ggplot2’ to Create ‘UpSet’ Plots. <https://cran.rstudio.com/web/packages/ggupset/index.html>
- [18]Xie Y (2021). knitr: A General-Purpose Package for Dynamic Report Generation in R. R package version 1.36, <https://yihui.org/knitr/>.
- [19]ISARIC Clinical Characterisation Group (2021). COVID-19 symptoms at hospital admission vary with age and sex: results from the ISARIC prospective multinational observational study. *Infection*, 1–17. Advance online publication. <https://doi.org/10.1007/s15010-021-01599-5>
- [20]RECOVERY (2020, 16 June). Low-cost dexamethasone reduces death by up to one third in hospitalised patients with severe respiratory complications of COVID-19. <https://www.recoverytrial.net/news/low-cost-dexamethasone-reduces-death-by-up-to-one-third-in-hospitalised-patients-with-severe-respiratory-complications-of-covid-19>
- [21]RECOVERY Collaborative Group (2020). Dexamethasone in hospitalized patients with Covid-19 — preliminary report. *New England Journal of Medicine* doi:10.1056/NEJMoa2021436

Contributing individuals

Ali Abbas, Sheryl Ann Abdukahil, Ryuzo Abe, Laurent Abel, Lara Absil, Subhash Acharya, Andrew Acker, Shingo Adachi, Elisabeth Adam, Diana Adrião, Saleh Al Ageel, Shakeel Ahmed, Kate Ainscough, Tharwat

Aisa, Ali Ait Hssain, Younes Ait Tamlihat, Takako Akimoto, Ernita Akmal, Eman Al Qasim, Razi Alalqam, Tala Al-dabbous, Senthilkumar Alegesan, Cynthia Alegre, Beatrice Alex, Kévin Alexandre, Abdulrahman Al-Fares, Huda Alfoudri, Imran Ali, Naseem Ali Shah, Kazali Enagnon Alidjnoun, Jeffrey Aliudin, Qabas Alkhafajee, Clotilde Allavena, Nathalie Allou, Aneela Altaf, João Melo Alves, João Alves, Rita Alves, Maria Amaral, Heidi Ammerlaan, Phoebe Ampaw, Roberto Andini, Claire Andrejak, Andrea Angheben, François Angoulvant, Séverine Ansart, Massimo Antonelli, Carlos Alexandre Antunes de Brito, Kazi Rubayet Anwar, Ardiyan Apriyana, Yaseen Arabi, Irene Aragao, Francisco Arancibia, Carolline Araujo, Antonio Arcadi-pane, Patrick Archambault, Lukas Arenz, Jean-Benoît Arlet, Christel Arnold-Day, Ana Aroca, Lovkesh Arora, Rakesh Arora, Elise Artaud-Macari, Diptesh Aryal, Motohiro Asaki, Angel Asensio, Elizabeth Ashley, Namra Asif, Mohammad Asim, Jean Baptiste Assie, Anika Atique, AM Udara Lakshan Attanyake, Johann Auchabie, Hugues Aumaitre, Adrien Auvet, Laurène Azemar, Cecile Azoulay, Benjamin Bach, Delphine Bachelet, Claudine Badr, Nadia Baig, J. Kenneth Baillie, Erica Bak, Agamemnon Bakakos, Andriy Bal, Valeria Balan, Firouzé Bani-Sadr, Renata Barbalho, Wendy S. Barclay, Michaela Barnikel, Helena Barrasa, Audrey Barrelet, Cleide Barrigoto, Marie Bartoli, Cheryl Bartone, Joaquín Baruch, Mustehsan Bashir, Romain Basmaci, Denise Battaglini, Jules Bauer, Diego Fernando Bautista Rincon, Denisse Bazan Dow, Abigail Beane, Alexandra Bedossa, Sylvie Behilill, Albertus Beishuizen, Aleksandr Beljantsev, David Bellemare, Anna Beltrame, Beatriz Amorim Beltrão, Marine Beluze, Nicolas Benech, Dehbia Benkerrou, Suzanne Bennett, Luís Bento, Jan-Erik Berdal, Delphine Bergeaud, Hazel Bergin, José Luis Bernal Sobrino, Giulia Bertoli, Lorenzo Bertolino, Simon Bessis, Adam Betz, Sybille Bevilacqua, Karine Bezulier, Amar Bhatt, Krishna Bhavsar, Isabella Bianchi, Claudia Bianco, Moirangthem Bikram Singh, Felwa Bin Humaid, François Bissuel, Patrick Biston, Laurent Bitker, Jonathan Bitton, Pablo Blanco-Schweizer, Catherine Blier, Frank Bloos, Mathieu Blot, Filomena Boccia, Laetitia Bodenes, Alice Bogaarts, Debby Bogaert, Anne-Hélène Boivin, Pierre-Adrien Bolze, François Bompard, Diogo Borges, Raphaël Borie, Hans Martin Bosse, Elisabeth Botelho-Nevers, Lila Bouadma, Olivier Bouchaud, Sabelline Bouchez, Dounia Bouhmani, Damien Bouhour, Kévin Bouiller, Laurence Bouillet, Camile Bouisse, Anne-Sophie Boureau, John Bourke, Maude Bouscambert, Aurore Bousquet, Jason Bouziotis, Bianca Boxma, Marielle Boyer-Besseyre, Maria Boylan, Fernando Augusto Bozza, Matthew Brack, Axelle Braconnier, Cynthia Braga, Timo Brandenburger, Filipa Brás Monteiro, Luca Brazzi, Dorothy Breen, Patrick Breen, Patrick Breen, Kathy Brickell, Tessa Broadley, Alex Browne, Shaunagh Browne, Nicolas Brozzi, Marjolein Brusse-Keizer, Nina Buchtele, Christian Buesaquillo, Polina Bugaeva, Marielle Buisson, Danilo Buonsenso, Erlina Burhan, Aidan Burrell, Ingrid G. Bustos, Denis Butnaru, André Cabie, Susana Cabral, Eder Caceres, Cyril Cadoz, Mia Callahan, Kate Calligy, Jose Andres Calvache, João Cam, Valentine Campana, Paul Campbell, Josie Campisi, Cecilia Canepa, Mireia Cantero, Pauline Caraux-Paz, Sheila Cárcel, Chiara Simona Cardellino, Filipa Cardoso, Filipe Cardoso, Nelson Cardoso, Sofia Cardoso, Simone Carelli, Nicolas Carlier, Thierry Carmoi, Gayle Carney, Chloe Carpenter, Inês Carqueja, Marie-Christine Carret, François Martin Carrier, Ida Carroll, Gail Carson, Ed Carton, Maire-Laure Casanova, Mariana Cascão, Siobhan Casey, José Casimiro, Bailey Cassandra, Silvia Castañeda, Nidyanara Castanheira, Guylaine Castor-Alexandre, Henry Castrillón, Ivo Castro, Ana Catarino, François-Xavier Catherine, Paolo Cattaneo, Roberta Cavalin, Giulio Giovanni Cavalli, Alexandros Cavayas, Adrian Ceccato, Minerva Cervantes-Gonzalez, Anissa Chair, Catherine Chakveatzte, Adrienne Chan, Meera Chand, Christelle Chantalat Auger, Jean-Marc Chapplain, Julie Chas, Mobin Chaudry, Jonathan Samuel Chávez Iñiguez, Anjellica Chen, Yih-Sharng Chen, Matthew Pellán Cheng, Antoine Cheret, Thibault Chiara-bini, Julian Chica, Suresh Kumar Chidambaram, Catherine Chirouze, Davide Chiumello, Hwa Jin Cho, Sung-Min Cho, Bernard Cholley, Marie-Charlotte Chopin, Yock Ping Chow, Hiu Jian Chua, Jose Pedro Cidade, José Miguel Cisneros Herreros, Barbara Wanjiru Citarella, Anna Ciullo, Emma Clarke, Jennifer Clarke, Rolando Claude Del Granado, Sara Clohisey, Cassidy Codan, Caitriona Cody, Alexandra Coelho, Megan Coles, Gwenhaël Colin, Michael Collins, Sebastiano Maria Colombo, Pamela Combs, Jennifer Connolly, Marie Connor, Anne Conrad, Sofia Contreras, Elaine Conway, Graham S. Cooke, Mary Copland, Hugues Cordel, Amanda Corley, Sarah Cormican, Sabine Cornelis, Alexander Daniel Cornet, Arianne Joy Corpuz, Andrea Cortegiani, Grégory Corvaisier, Emma Costigan, Camille Couffignal, Sandrine Couffin-Cadiergues, Roxane Courtois, Stéphanie Cousse, Rachel Cregan, Charles Crepy D'Orleans, Sabine Croonen, Gloria Crowl, Jonathan Crump, Claudina Cruz, Juan Luis Cruz Berm, Jaime Cruz Rojo, Marc Csete, Alberto Cucino, Ailbhe Cullen, Caroline Cullen, Matthew Cummings, Gerard Curley, Elodie Curlier, Colleen Curran, Paula Custodio, Ana da Silva Filipe, Charlene Da Silveira, Al-Awwab Dabaliz, Andrew Dagens, Darren Dahly, Heidi Dalton, Jo Dalton, Seamus Daly, Federico D'Amico, Nick Daneman, Corinne Daniel,

Emmanuelle A Dankwa, Jorge Dantas, Frédérick D’Aragon, Mark de Boer, Gillian de Loughry, Diego de Mendoza, Etienne De Montmollin, Rafael Freitas de Oliveira França, Ana Isabel de Pinho Oliveira, Rosanna De Rosa, Thushan de Silva, Peter de Vries, Jillian Deacon, David Dean, Alexa Debard, Bianca DeBenedictis, Marie-Pierre Debray, Nathalie DeCastro, William Dechert, Lauren Deconninck, Romain Decours, Eve Defous, Isabelle Delacroix, Eric Delaveuve, Karen Delavigne, Nathalie M. Delfos, Ionna Deligiannis, Andrea Dell’Amore, Christelle Delmas, Pierre Delobel, Corine Delsing, Elisa Demonchy, Emmanuelle Denis, Dominique Deplanque, Pieter Depuydt, Mehul Desai, Diane Descamps, Mathilde Desvallée, Santi Dewayanti, Alpha Diallo, Sylvain Diamantis, André Dias, Andrea Dias, Rodrigo Diaz, Juan Jose Diaz, Priscila Diaz, Kévin Didier, Jean-Luc Diehl, Wim Dieperink, Jérôme Dimet, Vincent Dinot, Fara Diop, Alphonsine Diouf, Yael Dishon, Félix Djossou, Annemarie B. Docherty, Helen Doherty, Arjen M Dondorp, Andy Dong, Christl A. Donnelly, Maria Donnelly, Chloe Donohue, Yoann Donohue, Sean Donohue, Ciara Doran, Peter Doran, Céline Dorival, Eric D’Ortenzio, James Joshua Douglas, Renee Douma, Nathalie Dournon, Triona Downer, Joanne Downey, Mark Downing, Tom Drake, Aoife Driscoll, Murray Dryden, Claudio Duarte Fonseca, Vincent Dubeé, François Dubos, Alexandre Ducancelle, Toni Duculan, Susanne Dudman, Abhijit Duggal, Paul Dunand, Jake Dunning, Mathilde Duplaix, Emanuele Durante-Mangoni, Lucian Durham III, Bertrand Dusol, Juliette Duthoit, Xavier Duval, Anne Margarita Dyrhol-Riise, Marco Echeverria-Villalobos, Michael Edelstein, Siobhan Egan, Carla Eira, Mohammed El Sanharawi, Subbarao Elapavaluru, Brigitte Elharrar, Jacobien Ellerbroek, Philippine Eloy, Tarek Elshazly, Isabelle Enderle, Tomoyuki Endo, Ilka Engelmann, Vincent Enouf, Olivier Epaulard, Martina Escher, Mariano Esperatti, Hélène Esperou, Marina Esposito-Farese, João Estevão, Manuel Etienne, Nadia Ettalhaoui, Anna Greti Everding, Mirjam Evers, Isabelle Fabre, Marc Fabre, Amna Faheem, Arabella Fahy, Cameron J. Fairfield, Zul Fakar, Komal Fareed, Pedro Faria, Ahmed Farooq, Nataly Farshait, Arie Zainul Fatoni, Karine Faure, Raphaël Favory, Mohamed Fayed, Niamh Feely, Laura Feeney, Jorge Fernandes, Marília Andreia Fernandes, Susana Fernandes, François-Xavier Ferrand, Eglantine Ferrand Devouge, Joana Ferrão, Mário Ferraz, Benigno Ferreira, Sílvia Ferreira, Ricard Ferrer-Roca, Nicolas Ferriere, Céline Ficko, Claudia Figueiredo-Mello, Juan Fiorda, Thomas Flament, Clara Flateau, Tom Fletcher, Letizia Lucia Florio, Brigid Flynn, Deirdre Flynn, Claire Foley, Jean Foley, Victor Fomin, Tatiana Fonseca, Patricia Fontela, Simon Forsyth, Denise Foster, Giuseppe Foti, Erwan Fourn, Robert A. Fowler, Marianne Fraher, Diego Franch-Llasat, Christophe Fraser, John F Fraser, Marcela Vieira Freire, Ana Freitas Ribeiro, Caren Friedrich, Ricardo Fritz, Stéphanie Fry, Nora Fuentes, Masahiro Fukuda, Argin G, Valérie Gaborieau, Rostane Gaci, Massimo Gagliardi, Jean-Charles Gagnard, Nathalie Gagné, Amandine Gagneux-Brunon, Sérgio Gaião, Linda Gail Skeie, Phil Gallagher, Elena Gallego Curto, Carrol Gamble, Arthur Garan, Rebekha Garcia, Noelia García Barrio, Julia Garcia-Diaz, Esteban Garcia-Gallo, Navya Garimella, Denis Garot, Valérie Garrait, Basanta Gauli, Nathalie Gault, Aisling Gavin, Anatoliy Gavrylov, Alexandre Gaymard, Johannes Gebauer, Eva Geraud, Louis Gerbaud Morlaes, Nuno Germano, praveen kumar ghisulal, Jade Ghosn, Marco Giani, Carlo Giaquinto, Jess Gibson, Tristan Gigante, Morgane Gilg, Elaine Gilroy, Guillermo Giordano, Michelle Girvan, Valérie Gissot, Jesse Gitaka, Gezy Giwangkan-cana, Daniel Glikman, Petr Glybochko, Eric Gnall, Geraldine Goco, François Goehringer, Siri Goepel, Jean-Christophe Goffard, Jonathan Golob, Rui Gomes, Joan Gómez-Junyent, Marie Gominet, Alicia Gonzalez, Patricia Gordon, Isabelle Gorenne, Laure Goubert, Cécile Goujard, Tiphaine Goulenok, Margarite Grable, Jeronimo Graf, Edward Wilson Grandin, Pascal Granier, Giacomo Grasselli, Lorenzo Grazioli, Christopher A. Green, Courtney Greene, William Greenhalf, Segolène Greffe, Domenico Luca Grieco, Matthew Griffee, Fiona Griffiths, Ioana Grigoras, Albert Groenendijk, Anja Grosse Lordemann, Heidi Gruner, Yusing Gu, Fabio Guarracino, Jérémie Guedj, Martin Guego, Dewi Guellec, Anne-Marie Guerguerian, Daniela Guerreiro, Romain Guery, Anne Guillaumot, Laurent Guilleminault, Maisa Guimarães de Castro, Thomas Guimard, Marieke Haalboom, Daniel Haber, Hannah Habraken, Ali Hachemi, Amy Hackmann, Nadir Hadri, Olena Haidash, Fakhir Haidri, Sheeba Hakak, Adam Hall, Matthew Hall, Sophie Halpin, Jawad Hameed, Ansley Hamer, Raph Hamers, Rebecca Hamidfar, Terese Hammond, Rashan Haniffa, Hayley Hardwick, Ewen M. Harrison, Janet Harrison, Samuel Bernard Ekow Harrison, Alan Hartman, Mohd Shahnaz Hasan, Junaid Hashmi, Madiha Hashmi, Muhammad Hayat, Ailbhe Hayes, Leanne Hays, Jan Heerman, Lars Heggelund, Ross Hendry, Martina Hennessy, Aquiles Henriquez-Trujillo, Maxime Hentzien, Jaime Hernandez-Montfort, Daniel Herr, Andrew Hershey, Liv Hesstvedt, Astarini Hidayah, Eibhilin Higgins, Dawn Higgins, Grainne HigginsO’Keeffe, Rita Hinchion, Samuel Hinton, Hiroaki Hiraiwa, Hikombo Hitoto, Antonia Ho, Alexandre Hoctin, Isabelle Hoffmann, Oscar Hoiting, Rebecca Holt, Jan Cato Holter, Peter Horby, Juan Pablo Horcajada, Koji Hoshino, Kota Hoshino, Ikram Houas, Catherine L. Hough, Stuart Houltham, Jimmy Ming-Yang

Hsu, Jean-Sébastien Hulot, Stella Huo, Iqbal Hussain, Samreen Ijaz, Hajnal-Gabriela Illes, Patrick Imbert, Mohammad Imran, Rana Imran Sikander, Aftab Imtiaz, Hugo Inácio, Carmen Infante Dominguez, Elias Iosifidis, Sarah Isgett, Tiago Isidoro, Margaux Isnard, Junji Itai, Asami Ito, Daniel Ivulich, Danielle Jaafar, Salma Jaafoura, Julien Jabot, Clare Jackson, Nina Jamieson, Pierre Jaquet, Coline Jaud-Fischer, Stéphane Jaureguiberry, Jeffrey Javidfar, Denise Jaworsky, Florence Jego, Synne Jenum, Ruth Jimbo-Sotomayor, van der Palen Job, Ruth N. Jorge García, Cédric Joseph, Mark Joseph, Swosti Joshi, Mercé Jourdain, Philippe Jouvét, Jennifer June, Anna Jung, Hanna Jung, Dafsah Juzar, Ouifiya Kafif, Florentia Kaguelidou, Sabina Kali, Alina Kalicinska, Smaragdi Kalomoiri, Kavita Kamineni, Darshana Hewa Kandamby, Chris Kandel, Ravi Kant, Darakhshan Kanwal, Dyah Kanyawati, Todd Karsies, Christiana Kartsonaki, Daisuke Kasugai, Anant Kataria, Kevin Katz, Aasmine Kaur, Simreen Kaur Johal, Tatsuya Kawasaki, Christy Kay, Hannah Keane, Seán Keating, Andrea Kelly, Aoife Kelly, Claire Kelly, Niamh Kelly, Sadie Kelly, Yvelynne Kelly, Maeve Kelsey, Ryan Kennedy, Kalynn Kennon, Maeve Kernan, Younes Kerroumi, Sharma Keshav, Evelyne Kestelyn, Osama Khalid, Imrana Khalid, Antoine Khalil, Coralie Khan, Irfan Khan, Quratul Ain Khan, Sushil Khanal, Abid Khatak, Amin Khawaja, Michelle E Kho, Saye Khoo, Nasir Khoso, Yuri Kida, Peter Kiiza, Anders Benjamin Kildal, Jae Burm Kim, Antoine Kimmoun, Detlef Kindgen-Milles, Alexander King, Nobuya Kitamura, Paul Klenerman, Rob Klont, Gry Kloumann Bekken, Stephen Knight, Robin Kobbe, Chamira Kodippily, Malte Kohns Vasconcelos, Sabin Koirala, Mamoru Komatsu, Volkan Korten, Caroline Kosgei, Arsène Kpangon, Karolina Krawczyk, Sudhir Krishnan, Oksana Kruglova, Deepali Kumar, Mukesh Kumar, Pavan Kumar Vecham, Dinesh Kuriakose, Ethan Kurtzman, Neurinda Permata Kusumas-tuti, Demetrios Kutsogiannis, Galyna Kutsyna, Konstantinos Kyriakoulis, Marie Lachatre, Marie Lacoste, John G. Laffey, Marie Lagrange, Fabrice Laine, Olivier Lairez, Sanjay Lakhey, Antonio Lalueza, Marc Lambert, François Lamontagne, Marie Langelot-Richard, Vincent Langlois, Eka Yudha Lantang, Marina Lanza, Cédric Laouénan, Samira Laribi, Delphine Lariviere, Stéphane Lasry, Naveed Latif, Odile Launay, Didier Laureillard, Yoan Lavie-Badie, Andy Law, Cassie Lawrence, Teresa Lawrence, Minh Le, Clément Le Bihan, Cyril Le Bris, Georges Le Falher, Lucie Le Fevre, Quentin Le Hingrat, Marion Le Maréchal, Soizic Le Mestre, Gwenaël Le Moal, Vincent Le Moing, Hervé Le Nagard, Paul Le Turnier, Ema Leal, Marta Leal Santos, Su Hwan Lee, James Lee, Todd C. Lee, Gary Leeming, Bénédicte Lefebvre, Laurent Lefebvre, Benjamin Lefevre, Sylvie LeGac, Jean-Daniel Lelievre, François Lellouche, Adrien Lemaigen, Véronique Lemeé, Anthony Lemeur, Gretchen Lemmink, Jenny Lennon, Rafael León, Marc Leone, Michela Leone, Quentin Lepiller, François-Xavier Lescure, Olivier Lesens, Mathieu Lesouhaitier, Amy Lester-Grant, Bruno Levy, Yves Levy, Claire Levy-Marchal, Katarzyna Lewandowska, Erwan L'Her, Gianluigi Li Bassi, Janet Liang, Ali Liaquat, Geoffrey Liegeon, Wei Shen Lim, Chantre Lima, Bruno Lina, Andreas Lind, Maja Katherine Lingad, Guillaume Lingas, Sylvie Lion-Daolio, Samantha Lissauer, Keibun Liu, Marine Livrozet, Patricia Lizotte, Antonio Loforte, Navy Lolong, Diogo Lopes, Dalia Lopez-Colon, Anthony L. Loschner, Paul Loubet, Bouchra Loufti, Guillame Louis, Silvia Lourenco, Lara Lovelace-Macon, Marije Lowik, Jean Christophe Lucet, Carlos Lumbreras Bermejo, Carlos M. Luna, Olguta Lungu, Liem Luong, Nestor Luque, Dominique Luton, Nilar Lwin, Ruth Lyons, Olavi Maasikas, Oryane Mabiala, Sarah MacDonald, Samuel MacDonald, Moïse Machado, Gabriel Macheda, Juan Macias Sanchez, Jai Madhok, Guillermo Maestro de la Calle, Rafael Mahieu, Sophie Mahy, Ana Raquel Maia, Lars S. Maier, Mylène Maillet, Thomas Maitre, Maximilian Malfertheiner, Nadia Malik, Paddy Mallon, Fernando Maltez, Denis Malvy, Victoria Manda, Jose M. Mandei, Laurent Mandelbrot, Frank Manetta, Julie Mankikian, Edmund Manning, Aldric Manuel, Ceila Maria Sant'Ana Malaque, Daniel Marino, Flávio Marino, Samuel Markowicz, Charbel Maroun Eid, Ana Marques, Catherine Marquis, Brian Marsh, Laura Marsh, Megan Marshal, John Marshall, Celina Turchi Martelli, Dori-Ann Martin, Emily Martin, Guillaume Martin-Blondel, Alessandra Martinelli, Ignacio Martin-Loeches, Martin Martinot, Alejandro Martin-Quiros, Ana Martins, João Martins, Nuno Martins, Caroline Martins Rego, Gennaro Martucci, Olga Martynenko, Eva Miranda Marwali, Juan Fernando Masa Jimenez, David Maslove, David Maslove, Phillip Mason, Sabina Mason, Sobia Masood, Basri Mat Nor, Moshe Matan, Meghena Mathew, Daniel Mathieu, Mathieu Mattei, Romans Matulevics, Laurence Maulin, Michael Maxwell, Javier Maynar, Thierry Mazzoni, Natalie Mc Evoy, Lisa Mc Sweeney, Lorraine McAndrew, Colin McArthur, Aine McCarthy, Anne McCarthy, Colin McCloskey, Rachael McConnochie, Sherry McDermott, Sarah E. McDonald, Aine McElroy, Samuel McElwee, Victoria McEneaney, Allison McGeer, Chris McKay, Johnny McKeown, Kenneth A. McLean, Paul McNally, Bairbre McNicholas, Elaine McPartlan, Edel Meaney, Cécile Mear-Passard, Maggie Mechlin, Maqsood Meher, Omar Mehkri, Ferruccio Mele, Luis Melo, Kashif Memon, Joao Joao Mendes, Ogechukwu Menkiti, Kusum Menon, France Mentré, Alexander J. Mentzer, Em-

manuelle Mercier, Noémie Mercier, Antoine Merckx, Mayka Mergeay-Fabre, Blake Mergler, Laura Merson, António Mesquita, Roberta Meta, Osama Metwally, Agnès Meybeck, Dan Meyer, Alison M. Meynert, Vanina Meysonnier, Amina Meziane, Mehdi Mezidi, Giuliano Michelagnoli, Céline Michelanglei, Isabelle Michelet, Efstathia Mihelis, Vladislav Mihnovit, Hugo Miranda-Maldonado, Asma Moin, David Molina, Elena Molinos, Brenda Molloy, Mary Mone, Agostinho Monteiro, Claudia Montes, Giorgia Montrucchio, Sarah Moore, Shona C. Moore, Lina Morales Cely, Lucia Moro, Diego Rolando Morocho Tuttillo, Ben Morton, Catherine Motherway, Ana Motos, Hugo Mouquet, Clara Mouton Perrot, Julien Moyet, Aisha Kalsoom Mufti, Jimmy Mullaert, Fredrik Muller, Karl Erik Müller, Daniel Munblit, Syed Muneeb, Nadeem Munir, Laveena Munshi, Aisling Murphy, Aisling Murphy, Lorna Murphy, Marlène Murriss, Srinivas Murthy, Himed Musaab, Himasha Muvindi, Dimitra Melia Myrodia, Farah Nadia Mohd-Hanafiah, Dave Nagpal, Alex Nagrebetsky, Mangala Narasimhan, Nageswaran Narayanan, Rashid Nasim Khan, Alasdair Nazerali-Maitland, Nadège Neant, Holger Neb, Coca Necsoi, Nikita A Nekliudov, Raul Neto, Emily Neumann, Bernardo Neves, Wing Yiu Ng, Pauline Yeung Ng, Anthony Nghi, Duc Nguyen, Orna Ni Choileain, Niamh Ni Leathlobhair, Alistair Nichol, Stephanie Nonas, Marion Noret, Lisa Norman, Alessandra Notari, Mahdad Noursadeghi, Karolina Nowicka, Adam Nowinski, Saad Nseir, Jose I Nunez, Nurnaningsih Nurnaningsih, Dwi Utomo Nusantara, Elsa Nyamankolly, Fionnuala O'Brien, Annmarie O'Callaghan, Annmarie O'Callaghan, Giovanna Occhipinti, Derbrenn O'Connor, Max O'Donnell, Tawnya Ogston, Takayuki Ogura, Tak-Hyuk Oh, Sophie O'Halloran, Katie O'Hearn, Shinichiro Ohshimo, Agnieszka Oldakowska, João Oliveira, Larissa Oliveira, Piero L. Oliaro, Conar O'Neil, David S.Y. Ong, Wilna Oosthuyzen, Anne Opavsky, Peter Openshaw, Saijad Orakzai, Claudia Milena Orozco-Chamorro, Andrés Orquera, Jamel Ortoleva, Javier Osatnik, Linda O'Shea, Miriam O'Sullivan, Nadia Ouamara, Rachida Ouissa, Clark Owyang, Eric Oziol, Maïder Pagadoy, Justine Pages, Amanda Palacios, Mario Palacios, Massimo Palmarini, Giovanna Panarello, Prasan Kumar Panda, Hem Paneru, Mauro Panigada, Nathalie Pansu, Aurélie Papadopoulos, Edwin Fernando Paredes Oña, Rachael Parke, Melissa Parker, Briseida Parra, Vieri Parrini, Taha Pasha, Jérémie Pasquier, Bruno Pastene, Fabian Patauner, Mohan Dass Pathmanathan, Luís Patrão, Patricia Patricio, Juliette Patrier, Lisa Patterson, Rajyabardhan Pattnaik, Christelle Paul, Mical Paul, Jorge Paulos, William A. Paxton, Jean-François Payen, Kalaiarasu Peariasamy, Miguel Pedrera Jiménez, Giles J. Peek, Florent Peelman, Nathan Peiffer-Smadja, Vincent Peigne, Mare Pejkovska, Paolo Pelosi, Ithan D. Peltan, Rui Pereira, Daniel Perez, Luis Periel, Thomas Perpoint, Antonio Pesenti, Vincent Pestre, Lenka Petrou, Ventzislava Petrov-Sanchez, Frank Olav Pettersen, Gilles Peytavin, Scott Pharand, Michael Piagnerelli, Walter Picard, Olivier Picone, Maria de Piero, Carola Pierobon, Djura Piersma, Carlos Pimentel, Raquel Pinto, Catarina Pires, Isabelle Pironneau, Lionel Piroth, Riinu Pius, Simone Piva, Laurent Plantier, Daniel Plotkin, Julien Poissy, Ryadh Pokeerbux, Maria Pokorska-Spiewak, Sergio Poli, Georgios Pollakis, Diane Ponscarme, Jolanta Popielska, Diego Bastos Porto, Andra-Maris Post, Douwe F. Postma, Pedro Povoá, Diana Póvoas, Jeff Powis, Sofia Prapa, Sébastien Preau, Christian Prebensen, Jean-Charles Preiser, Anton Prinssen, Mark G. Pritchard, Gamage Dona Dilanthi Priyadarshani, Lucia Proença, Sravya Pudota, Oriane Puéchal, Bambang Pujo Semedi, Mathew Pulicken, Matteo Puntoni, Gregory Purcell, Luisa Quesada, Vilmaris Quinones-Cardona, Víctor Quirós González, Else Quist-Paulsen, Mohammed Quraishi, Christian Rabaud, Ebenezer Rabindraranjan, Aldo Rafael, Marie Rafiq, Gabrielle Ragazzo, Arsalan Rahutullah, Fernando Rainieri, Pratheema Ramachandran, Nagarajan Ramakrishnan, Kollengode Ramanathan, Blandine Rammaert, Grazielle Viana Ramos, Asim Rana, Ritika Ranjan, Christophe Rapp, Aasiyah Rashan, Thalha Rashan, Ghulam Rasheed, Menaldi Rasmin, Indrek Rätsep, Cornelius Rau, Ali Raza, Andre Real, Stanislas Rebaudet, Sarah Redl, Brenda Reeve, Attaur Rehman, Liadain Reid, Liadain Reid, Dag Henrik Reikvam, Renato Reis, Jordi Rello, Jonathan Remppis, Martine Remy, Hongru Ren, Hanna Renk, Liliana Resende, Anne-Sophie Resseguier, Matthieu Revest, Oleksa Rewa, Luis Felipe Reyes, Tiago Reyes, Maria Ines Ribeiro, David Richardson, Denise Richardson, Laurent Richier, Jordi Riera, Ana L Rios, Asgar Rishu, Patrick Rispal, Karine Risso, Maria Angelica Rivera Nuñez, Nicholas Rizer, Chiara Robba, André Roberto, Stephanie Roberts, David L. Robertson, Olivier Robineau, Ferran Roche-Campo, Paola Rodari, Simão Rodeia, Julia Rodriguez Abreu, Bernhard Roessler, Claire Roger, Pierre-Marie Roger, Emmanuel Roilideseira, Amanda Rojek, Juliette Romaru, Roberto Roncon-Albuquerque Jr, Mélanie Roriz, Manuel Rosa-Calatrava, Michael Rose, Dorothea Rosenberger, Nurul Hidayah Mohammad Roslan, Andrea Rossanese, Matteo Rossetti, Bénédicte Rossignol, Patrick Rossignol, Stella Rousset, Carine Roy, Benoît Roze, Desy Rusmawatingtyas, Clark D. Russell, Maria Ryan, Maeve Ryan, Steffi Ryckaert, Aleksander Rygh Holten, Arne S, Isabela Saba, Sairah Sadaf, Musharaf Sadat, Valla Sahraei, Maximilien Saint-Gilles, Pranya Sakiyalak, Nawal Salahuddin, Leonardo Salazar, Jodat Saleem, Gabriele Sales, Stéphane Sallaberry,

Charlotte Salmon Gandonniere, Hélène Salvator, Olivier Sanchez, Xavier Sánchez Choez, Kizy Sanchez de Oliveira, Angel Sanchez-Miralles, Vanessa Sancho-Shimizu, Gyan Sandhu, Zulfiqar Sandhu, Pierre-François Sandrine, Oana Sandulescu, Marlene Santos, Shirley Sarfo-Mensah, Bruno Sarmento Banheiro, Iam Claire E. Sarmiento, Benjamine Sarton, Sree Satyapriya, Egle Saviciute, Parthena Savvidou, Justin Schaffer, Tjard Schermer, Arnaud Scherpereel, Marion Schneider, Stephan Schroll, Michael Schwameis, Gary Schwartz, Janet T. Scott, James Scott-Brown, Nicholas Sedillot, Tamara Seitz, Jaganathan Selvanayagam, Caroline Semaille, Malcolm G. Semple, Eric Senneville, Claudia Sepulveda, Filipa Sequeira, Tânia Sequeira, Ary Serpa Neto, Pablo Serrano Balazote, Ellen Shadowitz, Mohammad Shamsah, Shaikh Sharjeel, Pratima Sharma, Catherine A. Shaw, Victoria Shaw, Ashraf Sheharyar, Haixia Shi, Nisreen Shiban, Mohiuddin Shiekh, Takuya Shiga, Nobuaki Shime, Hiroaki Shimizu, Keiki Shimizu, Naoki Shimizu, Sally Shrapnel, Shubha Kalyan Shrestha, Pramesh Sundar Shrestha, Hoi Ping Shum, Nassima Si Mohammed, Jeanne Sibiude, Atif Siddiqui, Louise Sigfrid, Piret Sillaots, Catarina Silva, Maria Joao Silva, Rogério Silva, Benedict Sim Lim Heng, Wai Ching Sin, Budha Charan Singh, Punam Singh, Vegard Skogen, Sue Smith, Benjamin Smood, Coilin Smyth, Michelle Smyth, Michelle Smyth, Morgane Snacken, Dominic So, Monserrat Solis, Joshua Solomon, Tom Solomon, Emily Somers, Agnès Sommet, Myung Jin Song, Rima Song, Tae Song, Jack Song Chia, Michael Sonntagbauer, Alberto Sotto, Edouard Soum, Ana Chora Sousa, Marta Sousa, Maria Sousa Uva, Vicente Souza-Dantas, Alexandra Sperry, B. P. Sanka Ruwan Sri Darshana, Shiranee Sriskandan, Sarah Stabler, Thomas Staudinger, Stephanie-Susanne Stecher, Trude Steinsvik, Ymkje Stienstra, Birgitte Stiksrud, Eva Stolz, Amy Stone, Anca Streinu-Cercel, Adrian Streinu-Cercel, Samantha Strudwick, Ami Stuart, David Stuart, Gabriel Suen, Jacky Y. Suen, Prasanth Sukumar, Asfia Sultana, Charlotte Summers, Dubravka Supic, Magdalena Surovcová, Suwarti Suwarti, Andrey A Svistunov, Konstantinos Syrigos, Jaques Sztajn bok, Konstanty Szuldrzynski, Shirin Tabrizi, Fabio S. Taccone, Lysa Taghersset, Ewa Talarek, Sara Taleb, Jelmer Talsma, Maria Lawrensia Tampubolon, Le Van Tan, Clarice Tanaka, Hiroyuki Tanaka, Taku Tanaka, Hayato Taniguchi, Huda Taqdees, Arshad Taqi, Coralie Tardivon, Pierre Tattevin, M Azhari Taufik, Hassan Tawfik, Richard S. Tedder, João Teixeira, Sofia Tejada, Marie-Capucine Tellier, Vanessa Teotonio, François Téoulé, Pleun Terpstra, Olivier Terrier, Nicolas Terzi, Hubert Tessier-Grenier, Adrian Tey, Anand Thakur, Vincent Thibault, Simon-Djamel Thiberville, Benoît Thill, Shaun Thompson, Emma C. Thomson, David Thomson, Duong Bich Thuy, Ryan S. Thwaites, Paul Tierney, Vadim Tieroshyn, Peter S Timashev, Jean-François Timsit, Bharath Kumar Tirupakuzhi Vijayaraghavan, Noémie Tissot, Maria Toki, Kristian Tonby, Antoni Torres, Margarida Torres, Rosario Maria Torres Santos-Olmo, Hernando Torres-Zevallos, Michael Towers, Tony Trapani, Damien Traynor, Théo Treoux, Huynh Trung Trieu, Cécile Tromeur, Ioannis Trontzas, Tiffany Trouillon, Jeanne Truong, Christelle Tual, Sarah Tubiana, Helen Tuite, Jean-Marie Turmel, Lance C.W. Turtle, Anders Tveita, Pawel Twardowski, Makoto Uchiyama, PG Ishara Udayanga, Andrew Udy, Roman Ullrich, Alberto Uribe, Asad Usman, Cristinava Vajdovics, Luís Val-Flores, Ana Luiza Valle, Amélie Valran, Stijn Van de Velde, Marcel van den Berge, Machteld Van der Feltz, Paul van der Valk, Nicky Van Der Vekens, Peter Van der Voort, Sylvie Van Der Werf, Marlice van Dyk, Laura van Gulik, Jarne Van Hattem, Steven van Lelyveld, Carolien van Netten, Gitte Van Twillert, Ilonka van Veen, Noémie Vanel, Henk Vanoverschelde, Pooja Varghese, Michael Varrone, Charline Vauchy, Helen Vaughan, Aurélie Veislinger, Sebastian Vencken, Sara Ventura, Annelies Verbon, James Vickers, José Ernesto Vidal, César Vieira, Deepak Vijayan, Joy Ann Villanueva, Judit Villar, Pierre-Marc Villeneuve, Andrea Villoldo, Nguyen Van Vinh Chau, Benoit Visseaux, Hannah Visser, Chiara Vitiello, Harald Vonkeman, Fanny Vuotto, Noor Hidayu Wahab, Wan Fadzlina Wan Muhd Shukeri, Chih-Hsien Wang, Jia Wei, Katharina Weil, Sanne Westelius, T. Eoin West, Murray Wham, Bryan Whelan, Nicole White, Paul Henri Wicky, Aurélie Wiedemann, Keith Wille, Suzette Willems, Virginie Williams, Evert-Jan Wils, Calvin Wong, Xin Ci Wong, Ioannis Xynogalas, Sophie Yacoub, Masaki Yamazaki, Yazdan Yazdanpanah, Cécile Yelnik, Stephanie Yerkovich, Toshiki Yokoyama, Hodane Yonis, Obada Yousif, Saptadi Yuliarto, Akram Zaaqoq, Marion Zabbe, Kai Zacharowski, Maram Zahran, Maria Zambon, Miguel Zambrano, Alberto Zanella, Konrad Zawadka, Hiba Zayyad, Alexander Zoufaly, David Zucman, The Western Australian COVID-19 Research Response, Mazankowski Heart Institute.

Contributing Sites

Argentina

Hospital de Clínicas, Hospital Aleman, Mar del Plata Medical Foundation Private Community Hospital, Clínica Pasteur.

Australia

Port Macquarie Base Hospital, University of Queensland, University of Western Australia/Fiona Stanley Hospital, Monash University, Albury Wodonga Health, Alice Springs Hospital, Angliss Hospital, Austin Hospital, Ballarat Base Hospital, Bankstown-Lidcombe Hospital, Barwon Health, Bendigo Hospital, Box Hill Hospital, Bunbury Hospital, Bundaberg Hospital, Caboolture Hospital, Cabrini Hospital, Cairns Hospital, Calvary Mater Hospital, Campbelltown Hospital, Canberra Hospital, Casey Hospital, Concord Hospital, Dandenong Hospital, Epworth Hospital, Flinders Medical Centre, Footscray Hospital, Frankston Hospital, Gold Coast University Hospital, Hervey Bay Hospital, Ipswich Hospital, John Hunter Hospital, Joondalup Health Campus, Launceston General Hospital, Lismore Base Hospital, Liverpool Hospital, Logan Hospital, Lyell McEwan Hospital, Maroondah Hospital, Mater Misericordiae Brisbane, Mildura Base Hospital, Monash Children's Hospital, Monash Medical Centre, Nepean Hospital, Northeast Health Wangaratta, Northern Health, Perth Children's Hospital, Prince of Wales Hospital, Princess Alexandra Hospital, Queensland Children's Hospital, Redcliffe Hospital, Rockingham Hospital, Royal Adelaide Hospital, Royal Brisbane and Women's Hospital, Royal Children's Hospital, Royal Darwin Hospital, Royal Hobart Hospital, Royal Melbourne Hospital, Royal North Shore Hospital, Royal Perth Hospital, Royal Prince Alfred Hospital, Sir Charles Gairdner Hospital, St George Hospital, St John of God Hospital, Midland, St John of God Hospital, St Vincent's Hospital, St. Vincent, Sunshine Coast University Hospital, Sunshine Hospital, Sydney Children's Hospital, The Alfred Hospital, The Prince Charles Hospital, The Queen Elizabeth Hospital, Toowoomba Hospital, Warrnambool, Werribee Mercy Hospital, Westmead Hospital, Wollongong Hospital, Women's and Children's Hospital.

Austria

Medical University of Vienna, Sozialmedizinisches Zentrum Sud.

Bangladesh

NICVD Dhaka.

Belgium

St-Pierre University Hospital, AZ Maria Middelaers, Universitair Ziekenhuis, CUB-Hopital Erasme, Civil Hospital Marie Curie.

Bolivia

Caja Nacional De Salud.

Brazil

Centro de Pesquisa Aggeu Magalhães, Hospital Universitário Clementino Fraga Filho, Hospital Naval Marcílio Dias, Hospital Escola da Universidade Federal de Pelotas, Mater Dei Hospital, Hospital de Amor, Instituto de Infectologia Emílio Ribas, Hospital das Clínicas da Faculdade de Medicina da Universidade de São Paulo, Instituto do Coração da Universidade de São Paulo (INCOR), Complexo Hospitalar Dr. Clementino Fraga, National Institute of Infectious Disease Evandro Chagas, Oswaldo Cruz Foundation (INI-FIOCRUZ), Ministry of Health, and D'Or Institute of Research and Education (IDOR), Sao Camilo Cura D'ars, Hospital Sirio-Libanês.

Canada

Grand River Hospital, Sunnybrook Health Sciences Centre, Vancouver Island Health, Brantford General Hospital, Royal Alexandra Hospital, Royal Columbian Hospital, St. Joseph's Healthcare Hamilton, The Montreal Children's Hospital, University of Alberta Adult ICU, Hôpital de l'Enfant-Jésus, Grey Nun's Community Hospital, Misericordia Community Hospital, Sturgeon Community Hospital, Red Deer Regional Hospital, Grande Prairie Queen Elizabeth II, CISSS Chaudière-Appalaches, Lions Gate Hospital, Mazankowski Heart

Institute, McGill University Health Centre, BC Children's Hospital, Vancouver General Hospital, Foothills Medical Centre, Unity Health Toronto, The Ottawa Hospital, Humber River Hospital, Niagara Health, The Centre hospitalier universitaire Sainte-Justine, Kingston Health Sciences Centre, McMaster University, Alberta Children's Hospital, Centre hospitalier de l'université de Montréal, Mount Sinai Hospital, North York General Hospital, Michael Garron Hospital, Joseph Brant Hospital, William Osler Health Sciences System - Etobicoke General Hospital, Centre hospitalier Universitaire de Sherbrooke, St Joseph's Health Center, University Health Network, University of Manitoba, The Hospital for Sick Children (SickKids), University Institute of Cardiology and Respiratory, St. Boniface Hospital, Children's Hospital of Eastern Ontario, Hospital du Sacre Coeur, London Health Sciences Centre, Institut Universitaire de Cardiologie et de Pneumologie de Québec, McGill University Health Centre, Sinai Health Systems, Mills Memorial Hospital, University Hospital Northern British Columbia.

Chile

Clinica Alemana DeSantiago, Clinica Las Condes, Instituto Nacional Del Tórax.

China

Queen Mary Hospital, Pamela Youde Nethersole Eastern Hospital, Princess Margaret Hospital, Queen Elizabeth Hospital.

Colombia

Universidad del Cauca, Fundación Cardiovascular de Colombia, Clinica Valle de Lilli, Clinica Universidad de La Sabana.

Czechia

University Hospital Ostrava.

Dominican Republic

The Center for Diagnosis.

Ecuador

Hospital de Especialidades Eugenio Espejo, Universidad de Las Américas, Catholic University, Hospital General San Francisco.

Estonia

North Estonia Medical Centre, Tartu University Hospital.

France

INSERM, Centre Hospitalier de Tourcoing, Centre Hospitalier Agen-Nérac, Centre Hospitalier du Pays d'Aix, Centre Hospitalier Universitaire Amiens-Picardie, Centre Hospitalier Universitaire d'Angers, Centre Hospitalier Annecy Genevois, Hôpital privé d'Antony, Centre Hospitalier Henri Duffaut, Centre Hospitalier Universitaire de Besançon, Centre Hospitalier de Béziers, Hôpital Avicenne, Hôpital Pellegrin, Centre Hospitalier Universitaire Ambroise-Paré, Centre Hospitalier de Bourg-en-Bresse, Centre Hospitalier Pierre Oudot, Centre Hospitalier Universitaire de Brest, Centre Hospitalier de Cahors, Centre Hospitalier Techer, Centre Hospitalier Métropole Savoie, Centre Hospitalier de Cholet, Centre Hospitalier Antoine Béclère, Centre Hospitalier Universitaire Gabriel Montpied, Centre Hospitalier de Colmar, Hôpital Louis-Mourier, Centre Hospitalier Alpes-Leman, Centre Hospitalier intercommunal de Créteil, Hôpital Henri-Mondor, Centre Hospitalier de Dax - Côte d'Argent, Centre Hospitalier de Digne-les-Bains, Centre Hospitalier Universitaire Mitterrand Dijon-Bourgogne, Hôpital Raymond-Poincaré, Centre Hospitalier Universitaire Grenoble-Alpes, Grand Hôpital de l'Est Francilien (Site de Marne-la-Vallée), Centre Hospitalier Départemental Vendée, Hôpital Jacques Monod, Hôpital Kremlin-Bicêtre, Centre Hospitalier Le Mans, Centre Hospitalier Emile Roux, Centre Hospitalier Universitaire de Lille, Hôpital Albert Calmette, Centre Hospitalier Universitaire de Lyon - HCL, Clinique de l'Infirmier Protestant de Lyon, Hôpital de la Croix-Rousse - HCL, Hôpital Femme Mère Enfant - HCL, Hôpital Lyon Sud - HCL, Centre Hospitalier Louis Raffalli, Hôpital de la Conception, Hôpital de la Timone, Hôpital Européen Marseille, Hôpital Nord, Grand Hôpital de l'Est Francilien

(Site de Meaux), Centre Hospitalier de Melun, Centre Hospitalier Régional Metz-Thionville, Centre Hospitalier Mont-de-Marsan, Centre Hospitalier Universitaire de Montpellier, Hôpital Arnaud de Villeneuve, Centre Hospitalier Régional et Universitaire de Nancy - Hôpitaux de Brabois, Centre Hospitalier Universitaire de Nantes (Hôpital femme-enfant-adolescent), Centre Hospitalier Universitaire de Nantes (Hôtel-Dieu), Hôpital Américain de Paris, Centre Hospitalier Universitaire de Nice (Hôpital Archet), Centre Hospitalier Universitaire de Nice (Hôpital Pasteur), Centre Hospitalier Universitaire de Nîmes, Groupe Hospitalier Diaconesses Croix Saint-Simon, Hôpital Bichat Claude-Bernard AP-HP, Hôpital Cochin AP-HP, Hôpital de la Pitié Salpêtrière AP-HP, Hôpital Européen Georges-Pompidou AP-HP, Hôpital Lariboisière AP-HP, Hôpital Necker-Enfants Malades AP-HP, Hôpital Robert-Debré AP-HP, Hôpital Saint-Antoine AP-HP, Hôpital Saint-Joseph, Hôpital Saint-Louis AP-HP, Hôpital Tenon AP-HP, Centre Hospitalier de Pau, Centre Hospitalier de Périgueux, Centre Hospitalier de Perpignan, Centre Hospitalier Universitaire de Poitiers, Hôpital Laënnec - site de Quimper, Centre Hospitalier Universitaire de Reims, Centre Hospitalier Universitaire Rennes (Hôpital Pontchaillou), Centre Hospitalier Universitaire Rennes (Hôpital Sud), Centre Hospitalier Universitaire Rouen (Center Hospitalier Universitaire de Rouen), Centre Hospitalier Universitaire Rouen (Hôpital Charles Nicolle), Centre Hospitalier de Saint-Denis, Centre Hospitalier de Saintonge, Centre Hospitalier Universitaire de Saint-Étienne, Centre Hospitalier Universitaire de Nantes (Hôpital Nord Laennec), Hôpital d'Instruction des Armées Bégin, Centre Hospitalier de Soissons, Centre Hospitalier Universitaire de Strasbourg, Hôpital Foch, Hôpital Bel-Air, Hôpital Purpan, Centre Hospitalier de Tourcoing, Centre Hospitalier Régional et Universitaire de Tours, Centre Hospitalier Bretagne Atlantique, Centre Hospitalier Intercommunal Villeneuve-Saint-Georges, Centre Hospitalier de Toulon, Centre Hospitalier Universitaire Toulouse (IUCT), Centre Hospitalier Universitaire Toulouse (Larrey), Centre Hospitalier Universitaire Toulouse (Rangueil), Thonon-les-Bains, CHU Carémeau, Centre Hospitalier Universitaire Grenoble-Alpes_FU.

French Guiana

Centre Hospitalier Andrée Rosemon.

Germany

University Children's Hospital, University Medical Center Hamburg-Eppendorf, University Hospital of Tübingen, University Hospital Dusseldorf, Jena University Hospital, Krankenhaus Barmherzige Br, Uniklinik University Hospital, Klinik und Poliklinik für Innere Medizin II, University Hospital Regensburg, Klinikum Passau, LMU Hospital Munich, Medical Department II, Campus Großhadern.

Ghana

Kintampo Health Research Centre.

Gibraltar

St Bernard's Hospital.

Greece

Sotiria General Hospital, Hippokration Hospital.

Guadeloupe

Centre Hospitalier Universitaire de Guadeloupe, Saint-Martin.

India

All India Institute of Medical Sciences, Apollo Hospitals Chennai, Apollo Main Hospital, Apollo Speciality Hospital - OMR, Ispat General Hospital, Kerala Institute of Medical Sciences, Pushpagiri Medical College Hospital, Mehta Hospital, Long COVID India - Terna Specialty Hospital and Research Centre, Apollo Speciality Vanagaram, Apollo First Med Hospital, Manipal Hospital Whitefield, ABC Hospital.

Indonesia

Fatmawati Hospital, PICU Saiful Anwar Hospital, Adult ICU Saiful Anwar Hospital, National Cardiovascular Center Harapan Kita Jakarta Indonesia, Persahabatan Hospital, Hasan Sadikin Hospital, Prof Dr R. D. Kandou Central Hospital (Paediatric), Prof Dr R. D. Kandou Central Hospital (Adult), Dr Sardjito

Government Hospital (Paediatric), University Airlangga Hospital (Paediatric), Sanglah General Hospital (Paediatric), RSUD Dr. Soetomo, RSPI Prof Dr Sulianti Saroso, Murni Teguh Memorial Hospital and Bunda Thamrin Hospital, Pratama Rada Bolo Hospital, Karitas Hospital and Waikabubak Hospital, RSUP Fatmawati, RSUD Pasar Minggu.

Ireland

University Hospital - Limerick, University Hospital - Waterford, Connolly Hospital Blanchardstown, Bon Secours Hospital, St Vincents University Hospital, Galway University Hospital, Beaumont Hospital, Tallaght University Hospital, Children's Health Ireland, St James's Hospital, Beacon Hospital, Sligo University Hospital (Saolta), Cork University Hospital, Mater Misericordiae University, Mercy Hospital, University Hospital, Our lady of Lourdes Drogheda, Wexford General Hospital.

Israel

Rambam Hospital, The Baruch Padeh Medical Center Poriya, Bar-Ilan University.

Italy

Ospedale Niguarda, University of Padua, University of Brescia, Monaldi Hospital, Ospedale Sacro Cuore Don Calabria, Policlinicodi Orsola Universitàdi Bologna, Azienda Ospedaliero Universitario Pisana, Azienda Provinciale per i Servizi Sanitari della Provincia Autonoma di Trento, Ospedale San Paolo, San Martino Hospital, Fondazione IRCCS Ca, Fondazione Policlinico Universitario Agostino Gemelli IRCCS, Ospedale Molinette, Ospedale San Gerardo, Policlinico of Padova, Istituto Mediterraneo per i Trapianti e Terapie ad Alta Specializzazione, Borgo San Lorenzo Hospital, Ospedale Papa Giovanni XXIII - Bergamo, University Hospital Policlinico Paolo Giaccone, University Hospital of Parma, Università Cattolica del Sacro Cuore.

Japan

Kyoto Medical Centre, Hiroshima University, Hyogo Prefectural Kakogawa Medical Center, Kimitsu Chuo Hospital, Rinku General Medical Center, Fujieda Municipal General Hospital, Kyoto Prefectural University of Medicine, Tohoku Medical and Pharmaceutical University, Fukuoka University, Yokohama City University Medical Center, Nagoya University Hospital, Kouritu Tousei Hospital, Hokkaido University Hospital, Chiba University Hospital, Saiseikai Senri Hospital, Teine Keijinkai Hospital, Saiseikai Utsunomiya Hospital, St. Marianna University School of Medicine, Tokyo Metropolitan Tama Medical Center, Shizuoka Children's Hospital, Obihiro-Kosei General Hospital, Tohoku University, Mie University Hospital.

Kenya

Mount Kenya University.

Kuwait

Al-Amiri & Jaber Al-Ahmed Hospitals, Al-Adan Hospital.

Laos

Lao-Oxford-Mahosot Hospital-Wellcome Trust Research Unit, Salavan Provincial Hospital, Xieng Khouang Provincial Hospital, Luang Namtha Provincial Hospital.

Malawi

Malawi-Liverpool Wellcome Trust.

Malaysia

National Institutes of Health (NIH), Ministry of Health Malaysia, International Islamic University Malaysia Medical Centre (IIUMMC), Kluang Hospital, Kuala Lumpur Hospital, Lahad Datu Hospital, Melaka Hospital, Pulau Pinang Hospital, Permai Hospital, Queen Elizabeth Hospital, Raja Permaisuri Bainun Hospital, Raja Perempuan Zainab II Hospital, Sultanah Aminah Hospital, Sultanah Bahiyah Hospital, Sultanah Nur Zahirah Hospital, Sungai Buloh Hospital, Tawau Hospital, Tengku Ampuan Afzan Hospital, Tuanku Fauziah Hospital, Tuanku Ja'afar, Sarawak General Hospital, Sunway Medical Centre, Hospital Universiti Sains Malaysia (SICU), University Malaya Medical Centre, Hospital Universiti Sains Malaysia (Mix medical & surgical ICU).

Mayotte

Centre Hospitalier de Mayotte.

Mexico

Hospitales Puerta de Hierro, University of Guadalajara Health Sciences Center.

Nepal

Nepal Medicit Hospital (Nepal Medicit ICU), Tribhuvan University Teaching Hospital (GICU), Grande International Hospital, Hospital for Advanced Medicine and Surgery (HAMS) 1, Chitwan Medical College (MICU), Nepal Medicit Hospital (COVID ICU), Tribhuvan University Teaching Hospital (COVID ICU), B & B Hospital, Chitwan Medical College (COVID ICU), Om Hospital, Nidan Hospital, Karuna Hospital, Tribhuvan University Teaching Hospital (ICU C).

Netherlands

Medisch Spectrum Twente, Beatrix ziekenhuis, Reinier de Graaf Gasthuis, Canisius Wilhelmina Ziekenhuis, Tergooi Hospital, Franciscus Gasthuis & Vlietland, Meander Medical Centre, Flevoziekenhuis, Spaarne Gasthuis, Ziekenhuisgroep Twente, Noordwest-Ziekenhuisgroep, Leiden University Medical Center, ADRZ, University Medical Center Groningen, Alrijne Hospital, Gelre Hospitals, Erasmus Medical Centre, Catharina Ziekenhuis, Adrz, Maastricht University Medical Centre.

New Zealand

Waikato Hospital, Auckland City Hospital (CVICU), Auckland City Hospital (DCCM 82), Middlemore Hospital (Canties Manukan Health), Wellington Regional Hospital, Waitemata District Health Board, Dunedin Public Hospital, Nelson Hospital.

Norway

University Hospital of North Norway, Oslo University Hospital, Akershus University Hospital, Drammen Hospital, Baerum Sykehus, The Norwegian Corona Cohort, Alanda Health.

Pakistan

Ziauddin Medical University Clifton Campus (MICU), Ziauddin Medical University Clifton Campus (SICU), Ziauddin Medical University Clifton Campus (Sari ICU), Ziauddin Medical University Clifton Campus (COVID Isolation Ward), PIMS (MICU), PIMS (Sari ICU), Patel Hospital (GICU), Critical Care Asia Site A-AF-003-003, North West General Hospital (MICU), North West General Hospital (COVID Isolation Ward 4), North West General Hospital (HDU), NICVD (MICU), NICVD (Sari ICU), National Hospital & Medical Center (SICU), National Hospital & Medical Center (SARI ICU), Doctors Hospital (SARI ICU), Darul Sehat Hospital (GICU), Darul Sehat Hospital (SARI ICU), Lady Reading hospital (GICU(OLD)), Lady Reading hospital (GICU), Lady Reading hospital (Floor 3- SARI ICU-2), Lady Reading hospital (Floor 1- isolation ward), Critical Care Asia Site A-AF-012-002, Critical Care Asia Site A-AF-012-003, Critical Care Asia Site A-AF-015-002, Jinnah Hospital, Lahore General Hospital, Hameed Latif Hospital (SARI ICU), Ziauddin Medical University North Nazimabad Campus (MICU), Ziauddin Medical University North Nazimabad Campus (Semi Medicine COVID Isolation Ward), Ziauddin Medical University North Nazimabad Campus (General COVID Isolation Ward), Bahria International Hospital (MICU), Bahria International Hospital (SICU), Sheikh Zayed Medical College Rahim yar Khan (SARI ICU), Pakistan Kidney & Liver Institute (SICU), South City Hospital Karachi (SARI ICU), North West General Hospital (SICU), North West General Hospital (COVID ward), North West General Hospital (SARI ICU), Abbasi Shaheed Hospital (SARI ICU), Lady Reading hospital (Floor 2- SARI ICU), Ziauddin Medical University North Nazimabad Campus (3rd Floor COVID Isolation Ward), Liaquat University Hospital (SICU), Sheikh Zayed Medical College Rahim yar Khan (Mixed ICU), Pakistan Kidney & Liver Institute (SARI ICU), South City Hospital Karachi (SARI Isolation Ward), GMMM Teaching Hospital, Azeema Sheikh Hospital, Abbasi Shaheed Hospital (MICU), Mayo Hospital Lahore (BICU), SIUT Hospital, South City Hospital Karachi (MICU), Ziauddin Medical University North Nazimabad Campus (COVID Isolation Ward), Hameed Latif Hospital

(SICU), Hameed Latif Hospital (MICU), Doctors Hospital (SICU), Jinnah Post-Graduate Medical Center (SICU), Abbasi Shaheed Hospital (Covid Ward), Abbasi Shaheed Hospital (SICU), NICVD (CCU-2), NICVD (SICU), Patel Hospital (SARI ICU), Lahore General Hospital (Phase 3 SICU).

Peru

Clínica Internacional, Hospital Emergencia Ate Vitarte.

The Philippines

Angeles University Foundation Medical Center.

Poland

Institute of TB and Lung Diseases, Department of Children's Infectious Diseases, University Hospital in Krakow, Consortium IMGEN.

Portugal

Centro Hospital e Universitário de Coimbra, Hospital de Curry Cabral - Infectious Diseases, Hospital de Curry Cabral - Internal Medicine, Hospital Vila Franca de Xira, Unidade Local de Sa, Centro Hospitalar de Leiria, Hospital Curry Cabral - Intensive Care Unit - UCIP7, Hospital Santa Maria, Centro Hospitalar Universitário Lisboa Norte, Hospital Da Luz, Hospital de São José -U.U.M., Unidade Local de Sa, Centro Hospitalar Universitário do Porto (CHUP), São João Hospital Centre, Hospital São Francisco Xavier, Centro Hospitalar Vila Nova de Gaia/Espinho, Hospital Espírito Santo de Évora, Hospital Egas Moniz, Centro Hospitalar de Tondela-Viseu, Hospital de Abrantes - ICU, Hospital Professor Doutor Fernando Fonseca, Hospital Garcia de Orta, Hospital Beatriz Ângelo, Centro Hospitalar Universitário do Algarve, Centro Hospitalar e Universitário de Coimbra - Hospital Pediátrico.

Qatar

Hamad General Hospital.

Réunion

Centre Hospitalier Félix-Guyon, Centre Hospitalier Universitaire de Saint-Pierre.

Romania

National Institute for Infectious Diseases Matei Bals, Grigore T Popa University of Medicine and Pharmacy.

Russia

Sechenov University.

Saint Martin (French)

Centre Hospitalier Universitaire de Martinique.

Saudi Arabia

King Abdulaziz Medical City, King Faisal Hospital Research Center.

Singapore

National University Hospital.

South Africa

Groote Schuur Hospital, Netcare Unitas ECMO Centre, National Institute for Communicable Diseases, South Africa, Aberdeen Hospital, Adelaide Hospital, Aliwal North Hospital, All Saints Hospital, Andries Vosloo Hospital, Aurora Hospital, Aurora Rehabilitation Hospital, Bambisana Hospital, Bedford Hospital, Bisho Hospital, Burgersdorp Hospital, Butterworth Hospital, Cala Hospital, Canzibe Hospital, Care Cure Queenstown, Cathcart Hospital, Cecilia Makiwane Hospital, Cloete Joubert Hospital, Cofimvaba Hospital, Cradock Hospital, Dora Nginza Hospital, Dordrecht Hospital, Dr Malizo Mpehle Hospital, Elizabeth Donkin Hospital, Elliot Hospital, Empilisweni Hospital, Empilweni Hospital, Fort Beaufort Hospital, Fort England

Hospital, Frere Hospital, Frontier Hospital, Glen Grey Hospital- Lady Frere, Greenville Hospital, Grey Hospital, Hewu Hospital, Holy Cross Hospital, Humansdorp Hospital, Indwe Hospital, Isilimela Hospital, Isivivana Private Hospital, Jamestown Hospital, Jose Pearson TB Hospital, Kareedouw Hospital, Khotsong TB Hospital, Komani Hospital, Komga Hospital, Lady Grey Hospital, Life Beacon Bay Private Hospital, Life East London Private Hospital, Life Hunters Craig Hospital, Life Queenstown Private Hospital, Life St Dominic's Hospital, Life St George's Hospital, Livingstone Hospital, Maclear Hospital, Madwaleni Hospital, Madzikane Ka Zulu Memorial Hospital, Martjie Venter Hospital, Matatiele Private Hospital, Mercantile Private Hospital, Midland Hospital, Mjanyana Hospital, Molteno Hospital, Mount Ayliff Hospital, Mthatha Private Hospital, Nelson Mandela Academic Hospital, Nessie Knight Hospital, Netcare Cuyler Hospital, Netcare Greenacres Hospital, Nkqubela Chest Hospital, Nompumelelo Hospital, Nurture Queenstown, Nurture Sunnyside, Orsmond TB Hospital, Port Alfred Hospital, Rev Dr Elizabeth Mamisa Chabula-Nxiweni Field Hospital, Sawas Hospital, Settlers Hospital PPP, Sipetu Hospital, SS Gida Hospital, St Barnabas Hospital (Ntlaza), St Elizabeth Hospital, St Francis Hospital (aliwal North), St Lucy's Hospital, St Mary's Hospital - Umtata, St Patrick's Hospital, Sterkstroom Hospital, Steynsburg Hospital, Stutterheim Hospital, Sundays Valley Hospital, Tafalofefe Hospital, Tayler Bequest Hospital (matatiele), Taylor Bequest Hospital (mount Fletcher), Tower Psychiatric Hospital, Uitenhage Hospital, Umlamli Hospital, Umtata General Hospital, Victoria Hospital (alice), Wilhelm Stahl Hospital, Willowmore Hospital, Winterberg Tb Hospital, Zithulele hospital, 3 Military Hospital, Albert Nzula District Hospital, Bloemcare Psychiatric Hospital, Boitumelo Hospital, Bongani Nurses' Dormitory Surge Facility, Bongani Regional Hospital, Botshabelo Hospital, Busamed Bram Fischer International Airport Hospital, Busamed Harrismith Private Hospital, Cairnhall Hospital, Corona Sub-Acute Hospital, Diamant Hospital, Dihlabeng Hospital, Dr Js Moroka Hospital, Elizabeth Ross Hospital, EmoyaMed Private Hospital, Fezi Ngubentombi Provincial Hospital, Hillandale Health Care Centre, House Idahlia Critical Care Surge Facility, Itemoheng Hospital, John Daniel Newsberry Hospital, Katleho Hospital, Life Pasteur Hospital, Life Rosepark Hospital, Mafube Hospital, Manapo Hospital, MANCOVS Surge Facility, Mediclinic Bloemfontein, Mediclinic Hoogland, Mediclinic Welkom, Mohau Hospital, Nala Hospital, National District Hospital, Netcare Kroon Hospital, Netcare Pelonomi Private Hospital, Netcare Vaalpark Clinic, Nketoana District Hospital, Nurture Woodlands (Mental Health Institution), Parys Hospital, Pelonomie Hospital, Phekolong Hospital, Phumelela Hospital, Phuthuloha Hospital, RH Matjhabeng Hospital, Riemland Clinic, Seniorita Ntlabathi District Hospital, St Helena GM Hospital, Stoffel Coetzee Hospital, Thebe Hospital, Thusanong Hospital, Tokollo Hospital, Universitas Hospital, Universitas Private Hospital, Universitas Underground Parking Surge Facility, Winburg Hospital, Arwyp Medical Centre, Bertha Gxowa Hospital, Bheki Mlangeni Hospital, Botshelong Empilweni Hospital, Botshilu Private Hospital, Bronkhorstspuit Hospital, Bryanston Subacute, Busamed Modderfontein Private Hospital Orthopaedic and Oncology Centre, Carletonville Hospital, Charlotte Maxeke Hospital, Chris Hani Baragwanath Hosp, Clinix Naledi Nkanyezi Hospital, Clinix Solomon Stix Morewa Hospital, Cullinan Rehabilitation Hospital, Daxina Hospital, Donald Gordon Medical Centre, Dr George Mukhari Hospital, Dr S K Matseke Memorial Hospital, Dr Yusaf Dadoo Hospital, Edenvale Hospital, Eskom Academy of Learning Quarantine Site, Esselenpark School of Excellence Quarantine Site, Far East Rand Hospital, Fisha wellness Hospital, Heidelberg Hospital, Helen Joseph Hospital, Jubilee Hospital, Kalafong Hospital, Kopanong Hospital, Lenmed Ahmed Kathrada Hospital, Lenmed Randfontein Private Hospital, Lenmed Zamokuhle Private Hospital, Leratong Hospital, Life Bedford Gardens Hospital, Life Brackenview, Life Brenthurst Hospital, Life Carstenhof Hospital, Life Carstenview Hospital, Life Dalview Hospital, Life Eugene Marais Hospital, Life Flora Hospital, Life Fourways Hospital, Life Genesis Clinic Saxonwold, Life Glynnview Hospital, Life Groenkloof Hospital, Life Health Care (Faerie Glen), Life Poortview Hospital, Life Riverfield Rehab Centre, Life Robinson Pvt Hospital, Life Roseacres Hospital, Life Springs Parkland Hospital, Life Suikerbosrand Hospital, Life The Glynnwood Hospital, Life Wilgeheuwel Hospital, Life Wilgers Hospital, Louis Pasteur Private Hospital, Lynmed Clinic, Mamelodi Hospital, Medforum Private Hospital, Mediclinic emfuleni, Mediclinic Gynaecological Hospital, Mediclinic Heart Hospital, Mediclinic kloof, Mediclinic Legae, Mediclinic Midstream, Mediclinic Morningside, Mediclinic Muelmed, Mediclinic Sandton, Mediclinic Vereeniging, Midvaal Private Hospital, Morehill Clinic Physical rehab, N17 Hospital, Nasrec Quarantine Site, Netcare Akasia Hospital, Netcare Bougainville Hospital, Netcare Clinton, Netcare Femina Hospital, Netcare Garden City Hospital, Netcare Jakaranda Hospital, Netcare Krugersdorp Hospital, Netcare Lakeview Hospital, Netcare Linksfield Hospital, Netcare Linkwood Hospital, Netcare Linmed Hospital, Netcare Milpark Hospital, Netcare Montana Hospital, Netcare Moot Hospital, Netcare Mulbarton Hospital, Netcare Olivedale Hospital, Netcare Optiklin Hospi-

tal, Netcare Pinehaven Hospital, Netcare Pretoria-East Hospital, Netcare Rehabilitation Hospital, Netcare Rosebank Hospital, Netcare Sunninghill Hospital, Netcare Sunward Park Hospital, Netcare Union Hospital, Netcare Unitas Hospital, Netcare Waterfall Hospital, New Kensington Clinic (Life), Nurture Rynmed, Nurture Vereeniging, ODI Community Hospital, Park Lane Clinic, Pholosong Hospital, Pretoria Eye Institute Arcadia, Pretoria Urology Hospital, Pretoria West Hospital, Rahima Moosa Mother And Child Hospital, RH Rand Hospital, Sebokeng Hospital, Sizwe Tropical Diseases Hosp, South Rand Hospital, Sterkfontein Hospital, Steve Biko Academic Hospital, Sunshine Hospital, Tambo Memorial Hospital, Tara H Moross Hospital, Telkom Learning Centre Quarantine Site, Tembisa Hospital, The Fountain Private Hospital, Thelle Mogoerane Regional Hospital, Tshepo-Themba Private Hospital, Tshwane District Hospital, Tshwane Rehabilitation Hospital, Vista Clinic, Weskoppies Hospital, Zuid Afrikaans Hospital, AbaQulusi Private Hospital, Addington Hospital, Ahmed Al-Kadi Private Hospital, Benedictine Hospital, Bethesda Hospital, Busamed Gateway Private Hospital, Busamed Hillcrest Private Hospital, Capital hospital, Catherine Booth Hospital, Ceza Hospital, Charles Johnson Memorial District Hospital, Christ The King Hospital, Clairwood Hospital, Daymed private hospital, Doris Goodwin Hospital, Dundee Hospital, Durdoc hospital, East Griqualand & Usher Memorial Hospital, Eden Gardens Private Hospital, Edendale Hospital, Ekombe Hospital, Emmaus Hospital, Eshowe Hospital, Estcourt Hospital, Fort Napier Hospital, General Justice Gizenga Mpanza Hospital, GJ Crooke's Hospital, Grey's Hospital, Greytown Hospital, Greytown Specialized TB Hospital, Hibiscus Cato Ridge Private Hospital, Hibiscus private hospital, Highway Sub-Acute, Hillcrest Hospital, Hlabisa Hospital, Inkosi Albert Luthuli Hospital, Itshelejuba Hospital, JMH Ascot Park Hospital, JMH City Hospital, JMH Isipingo Hospital, King Dinuzulu Hospital, King Edward VIII Hospital, Kokstad Private Hospital, KwaDukuza Private Hospital, Kwa-Magwaza Hospital, La Verna private hospital, Ladysmith Hospital, Lenmed Ethekeini Hospital and Heart Centre, Life Chatsmed Garden Hospital, Life empangeni private hospital, Life Entabeni Hospital, Life Hilton private hospital, Life Mt Edgecombe Hospital, Life the Crompton hospital, Life westville hospital, Madadeni Hospital, Mahatma Gandhi Memorial Hospital, Manguzi Hospital, Mbongolwane Hospital, Mccords Hospital, Mediclinic Howick, Mediclinic pietermaritzburg, Mediclinic Victoria, Medicross Procure, Medicross Richards Bay Day Theatre, Medicross Wembley House, Melomed Richardsbay HOSPITAL, Midlands Medical Centre Private Hospital, Montebello Hospital, Mosvold Hospital, Mseleni Hospital, Murchison Hospital, Netcare Alberlito Hospital, Netcare Kingsway Hospital, Netcare Margate Hospital, Netcare Parklands Hospital, Netcare St Anne's Hospital, Netcare St Augustine Hospital, Netcare The Bay Hospital, Netcare Umhlanga Hospital, Newcastle Hospital, Newcastle Private Hospital, Ngwelezana Hospital, Nkandla Hospital, Nkonjeni Hospital, Nurture Ilembe, Osindisweni Hospital, Othobothini CHC, Port Shepstone Hospital, Prince Cyril Zulu Cdc, Prince Mshiyeni Hospital, Queen Nandi Regional Hospital, Richmond Hospital, Rietvlei Hospital, RK Khan Hospital, Shelly Beach Private Hospital, Shifa private hospital, St Aidan's Mission Hospital, St Andrews Hospital, St Apollinaris Hospital, St Margarets Hospital, St Mary's Hospital, Thulasizwe Hospital, Town Hill Hospital, Umphumulo Hospital, Untunjambili Hospital, Vryheid Hospital, Wentworth Hospital, Botlokwa Hospital, Cn Phatudi Hospital, Dilokong Hospital, Donald Fraser Hospital, Elim Hospital, Ellisras Hospital, Evuxakeni Hospital, FH Odendaal Hospital, George Masebe Hospital, Groblersdal Hospital, Hayani Psychiatric Hospital, Helene Franz Hospital, Jane Furse Hospital, Kgapane Hospital, Lebowakgomo Hospital, Letaba Hospital, Louis Trichardt Hospital, Malamulele Hospital, Mankweng Hospital, Maphuta L Malatji Hospital, Matlala Hospital, Mecklenburg Hospital, Mediclinic Lephalele, Mediclinic Limpopo, Mediclinic Thabazimbi, Mediclinic tzaneen, Medleb, Messina Hospital, Modimolle MDR TB Hospital, Mokopane Hospital, Netcare pholoso hospital, Nkhensani Hospital, Philadelphia Hospital, Polokwane Hospital, Sekororo Hospital, Seshego Hospital, Siloam Hospital, St Rita's Hospital, Thabamopo Psychiatric Hosp, Thabazimbi Hospital, Tshilidzini Hospital, Van Velden Hospital, Voortrekker Hospital, Warmbaths Hospital, WF Knobel Hospital, Witpoort Hospital, Zebediela Hospital, Zoutpansberg Private Hospital, Amajuba Memorial Hospital, Barberton Hospital, Belfast Hospital (HA Grove), Bethal Hospital, Carolina Hospital, Elsie Ballot Hospital, Emalahleni Private Hospital, Embhuleni Hospital, Ermelo Provincial Hospital, Evander Hospital, Kiaat Private hospital, Kwamhlanga Hospital, Life Cosmos Hospital, Life Midmed Hospital, Lydenburg Hospital, Mapulaneng Hospital, Matibidi Hospital, Matikwana Hospital, Mediclinic Ermelo, Mediclinic Highveld, Middelburg Hospital, Mmametlhake Hospital, Nelspruit Medi Clinic, Piet Retief Hospital, RH Phodiclinic, RH Piet Retief Hospital, Rob Ferreira Hospital, Sabie Hospital, Shongwe Hospital, Standerton Hospital, Standerton Tb Hospital, Tb Specialised Hospital (barberton), Themba Hospital, Tintswalo Hospital, Tonga Hospital, Waterval-boven Hospital, Witbank Hospital, Beethoven Recovery Centre, Brits Hospital, Duff Scott Memorial Hospital, Ganyesa Community Hospital,

Job Shimankana Tabane Hospital, Joe Morolong Memorial Hospital, Klerksdorp Hospital, Life Anncron Hospital, Life Peglerae Hospital(pty)ltd, Mahikeng Provincial Hospital, Maseve Filed - Royal Bafokeng (priv), Medicare private hospital, Mediclinic Brits, Mediclinic potchefstroom, Mooimed Private Hospital, Netcare ferncrest hospital, Potchefstroom Hospital, Schweizer Reneke Hospital, Sunningdale Hospital, Taung Hospital, Tshepong Hospital, Victoria Private Hospital, Vryburg private hospital, West Vaal Hospital, Wilmed Park Private Hospital, Abraham Esau Hospital, Bill Pickard Hospital, De Aar Hospital, Douglas CHC, Dr Harry Surtie Hospital, Fritz Visser Hospital, Hopetown Hospital, Kakamas Hospital, Kathu private hospital, Keimoes Hospital, KimMed Private Hospital, Kuruman Hospital, Lenmed Bokamoso Private Hospital, Lenmed Royal Hospital and Heart Centre, Mani Dipico Hospital, Mediclinic Gariep, Mediclinic Kimberley, Mediclinic Upington, Medicross Upington Day Theatre, Postmasburg Hospital, Prieska Hospital, Prof ZK Matthews Hospital, Robert Mangaliso Sobukwe Hospital, Springbok Hospital, 2 Military Hospital, Alan Blyth Hospital, Alexandra Hospital, Bayview Private Hopital (Life), Beaufort West Hospital, Brackengate Intermediate Care, Brewelskloof Hospital, Brooklyn Chest Hospital, Busamed - Paardevlei private hospital, Caledon Hospital, Cape Gate Mediclinic, Carewell Sub-Acute Hospital, Ceres Hospital, Citrusdal Hospital, Clanwilliam Hospital, Crescent Clinic, CTICC COVID Intermediate Care, DP Marais Santa Centre, Eerste River Hospital, False Bay Hospital, George Hospital, Groote Schuur Hospital, Hanover Park Clinic Wc Par, Harry Comay Hospital Wc Hch, Heideveld Cdc Wc Hvp, Heideveld Emergency Centre, Helderberg Hospital, Helderberg Village, Somerset West, Hermanus Hospital, Karl Bremer Hospital, Khayelitsha Dist Hospital, Knysna Hospital, Knysna Private Hospital Wc Kvh, Laingsburg Hospital, Lapa Munnik Hospital, Lentegeur Hospital, Life Kingsbury Hospital, Life Vincent Pallotti Hospital, Life Westcoast Private Hospital, Malmesbury Infectious Disease Hosp Wc Mid, Mediclinic Cape Town, Mediclinic Constantiaberg, Mediclinic Durbanville, Mediclinic Geneva, Mediclinic george hospital, Mediclinic Hermanus, Mediclinic Klein Karoo, Mediclinic Louis Leipoldt, Mediclinic Milnerton, Mediclinic Paarl, Mediclinic Panorama, Mediclinic Plettenberg Bay, Mediclinic Stellenbosch, Mediclinic Vergelegen, Mediclinic Winelands Orthopaedic Hospital, Mediclinic Worcester, Medicross Cape Town Foreshore Theatre, Medicross langeberg, Melomed bellville, Melomed Gatesville, Melomed Mitchell's Plain, Melomed Tokai Private Clinic, Mitchell's Plain Covid Field Intermediate Care, Mitchell's Plain District Hosp, Montagu Hospital, Mossel Bay Hospital, Mowbray Maternity Hospital, Murraysburg Hospital, Netcare Blaauwberg Hospital, Netcare Ceres Hospital, Netcare Christiaan Barnard Memorial Hospital, Netcare Kuils River Hospital, Netcare N1 City Hospital, New Somerset Hospital, Nurture Cape View, Nurture Newlands, Otto Du Plessis Hospital, Oudtshoorn Hospital, Paarl Hospital, Prince Albert Hospital, Radie Kotze Hospital, Red Cross Childrens Hospital, Riversdale Hospital, Robertson Hospital, Rondebosch medical centre, Sonstraal Hospital, Stellenbosch Hospital, Stikland Psychiatric Hospital, Swartland Hospital, Swellendam Hospital, Tygerberg Hospital, Uct Private Academic Hospital, Uniondale Hospital, Valkenberg Hospital, Victoria Hospital, Vredenburg Hospital, Vredendal Hospital, Wesfleur Hospital, Western Cape Rehabilitation Centre, Worcester Hospital Wc Woc, National Institute for Communicable Diseases.

South Korea

Keimyung University Dong San Hospital, Seoul National University Bundang Hospital, Chonnam National University Hospital, Severance Hospital, Kyung Pook National University Chilgok Hospital.

Spain

Hospital del Mar, La Paz Hospital, University Hospital Virgen del Rocío / Institute of Biomedicine of Seville, Hospital Ramon y Cajal, Reina Sofia University Hospital, Hospital Puerta de Hierro Majadahonda, Hospital Universitario Virgen de Valme, Hospital Universitario Dr Negrín, Hospital Nuestra Señora de Gracia, Rio Hortega University Hospital, Hospital Universitari Sant Joan D'Alacant, Hospital Universitari Sagrat Cor, San Pedro de Alcantara Hospital, Hospital Clinic, Hospital 12 de Octubre, Hospital Vall d'Hebron, Hospital Verge de la Cinta, Hospital Universitario de Alava.

Taiwan

National Taiwan University Hospital.

Thailand

Siriraj Piyamaharajkarun Hospital (SiPH).

Turkey

Marmara University Hospital.

Ukraine

Lugansk State Medical University - Department of Internal Medicine No2, Kharkiv Regional Clinical Infectious Diseases Hospital.

United Arab Emirates

Cleveland Clinic Abu Dhabi.

United Kingdom

ISARIC4C, ISARIC Global Support Centre - Oxford, Airedale General Hospital, Alder Hey Children's NHS Foundation Trust, Royal Gwent Hospital, St Peter's Hospital, Blackberry Hill Hospital, Queen's Hospital, Barnsley Hospital, The Royal London Hospital, Basildon University Hospital, Bedford Hospital, Bedford Hospital South Wing, Luton & Dunstable Hospital, Bryn Beryl Hospital, Cefni Hospital, Chirk Community Hospital, Colwyn Bay Community Hospital, Deeside Community Hospital, Denbigh Community Hospital, Dolgellau & Barmouth District Hospital Site, Eryri Hospital, Holywell Community Hospital, Llandudno General Hospital Site, Mold Community Hospital, Ruthin Community Hospital, Wrexham Maelor Hospital, Ysbyty Alltwen, Ysbyty Glan Clwyd, Ysbyty Gwynedd, Ysbyty Penrhos Stanley, B1 BSMHT HQ, Moseley Hall Hospital, Birmingham Children's Hospital, Penn Hospital, Blackpool Victoria Hospital, Royal Bolton Hospital, Lynfield Mount Hospital, Bradford Royal Infirmary, Princess Royal Hospital, Royal Sussex County Hospital, Stoke Mandeville Hospital, Wycombe Hospital, Huddersfield Royal Infirmary, Addenbrooke's Hospital, CUH at Basildon University Hospital, Fulbourn Hospital, Noahs Ark Childrens Hospital for Wales, University Hospital of Wales, Chelsea & Westminster Hospital, West Middlesex University Hospital, Bowmere Hospital, Countess of Chester Hospital, Chesterfield Royal Hospital, Trengweath, Darlington Memorial Hospital, University Hospital of North Durham, Caludon Centre, Croydon University Hospital, St Nicholas Hospital (Newcastle Upon Tyne), Prince Charles Hospital Site, The Royal Glamorgan Hospital, Ysbyty Cwm Cynon, Ysbyty Cwm Rhondda, Darent Valley Hospital, Derbyshire Healthcare NHS Foundation Trust, Wonford House, Bassetlaw Hospital, Doncaster Royal Infirmary, Dorset County Hospital, Alderney Hospital, Blandford Community Hospital, Bridport Community Hospital, Victoria Hospital W'borne, Westminster Memorial Hospital, Weymouth Community Hospital, Lister Hospital, Macclesfield District General Hospital, Kent & Canterbury Hospital, Queen Elizabeth The Queen Mother Hospital, William Harvey Hospital (Ashford), Royal Blackburn Hospital, Broomfield Hospital, Colchester General Hospital, Ipswich Hospital, Conquest Hospital, Eastbourne District General Hospital, St Helier Hospital, Frimley Park Hospital, Wexham Park Hospital, Queen Elizabeth Hospital, George Eliot Hospital - Acute Services, Charlton Lane Site, Cirencester Hospital, Dilke Memorial Hospital, Stroud General Hospital, Tewkesbury General Hospital, Wotton Lawn Hospital, Gloucestershire Royal Hospital, Great Ormond Street Hospital Central London Site, The Great Western Hospital, St Thomas' Hospital, Basingstoke and North Hampshire Hospital, Royal Hampshire County Hospital, Harrogate District Hospital, Trust Head Office, Homerton University Hospital, Urgent Care Centre, Castle Hill Hospital, Hull Royal Infirmary, Trust Headquarters, Bronglais General Hospital, Glangwili Hospital Child Health Section, Prince Philip Hospital, Withybush General Hospital, Charing Cross Hospital, Hammersmith Hospital, St Mary's Hospital (HQ), St Mary's Hospital, James Paget University Hospital, Beech House, Kettering General Hospital, King's College Hospital (Denmark Hill), Kingston Hospital, Lantern Centre, Royal Preston Hospital, The Mount, Stockdale House, Leeds General Infirmary, St James's University Hospital, Community Rehabilitation Team (East), Leicestershire Partnership NHS Trust Mental Health Services, Queen Elizabeth Hospital, University Hospital Lewisham, Lincolnshire Community Health Services Unit 11, Lincolnshire Partnership NHS Foundation Trust, Liverpool Heart and Chest Hospital NHS Trust HQ, Royal Liverpool University Hospital, University Hospital Aintree, Walton Hospital, Liverpool Womens Hospital, Central Middlesex Hospital, Ealing Hospital, Northwick Park Hospital, St Marks Hospital, The Maidstone Hospital, The Tunbridge Wells Hospital, Manchester Royal Infirmary, Royal Manchester Children's Hospital, Trafford General Hospital, Wythenshawe Hospital, Medway Maritime Hospital, Ashworth Hospital, Southend Hospital, Leighton Hospital, Pinderfields General Hospital, St George's Hospital, Milton Keynes Hospital, University Hospital Ayr, University Hospital Crosshouse, Borders General Hospital, Dumfries & Galloway Royal Infirmary, Adamson Hospital, Cameron Hospital,

Glenrothes Hospital, Victoria Hospital, Forth Valley Royal Hospital, Aberdeen Royal Infirmary, Queen Elizabeth University Hospital, Caithness General Hospital, Campbeltown Hospital, Cowal Community Hospital, Lorn and Islands Hospital, Raigmore Hospital, Rni Community Hospital, Hairmyres Hospital, Monklands District General Hospital, Wishaw General Hospital, Royal Hospital for Sick Children (Edinburgh), Royal Infirmary of Edinburgh at Little France, St John's Hospital, Western General Hospital, Golden Jubilee National Hospital, Ninewells Hospital, Amherst Court, Livewell Southwest, Norfolk & Norwich University Hospital, Hellesdon Hospital, Norwich Community Hospital, Southmead Hospital, Cokermouth Hospital, Copeland Unit, Cumberland Infirmary, Keswick Hospital, Penrith Hospital, West Cumberland Hospital, North Middlesex Hospital, Harplands Hospital, University Hospital of North Tees, Hinchingsbrooke Hospital, Peterborough City Hospital, Hollins Park, Northampton General Hospital (Acute), North Devon District Hospital, Diana, Princess of Wales Hospital, Scunthorpe General Hospital, North Tyneside General Hospital, Northumbria Specialist Emergency Care Hospital, Wansbeck Hospital, Nottingham University Hospitals NHS Trust - City Campus, Nottingham University Hospitals NHS Trust - Queen's Medical Centre Campus, John Radcliffe Hospital, Fairfield General Hospital, North Manchester General Hospital, Royal Oldham Hospital, Poole General Hospital, Queen Alexandra Hospital, Doncaster - Tickhill Road Site, North Lincs - Great Oaks Inpatient Unit, Rotherham Older People's Mental Health Services, Royal Berkshire Hospital, Harefield Hospital, Royal Brompton Hospital, Royal Cornwall Hospital (Treliske), Royal Devon & Exeter Hospital (Wonford), Barnet Hospital, Royal Free Hospital, Royal Papworth Hospital (Papworth Everard), Royal Surrey County Hospital, Royal United Hospital, Salford Royal, Poole General Hospital, Salisbury District Hospital, City Hospital, Sandwell General Hospital, Sheffield Children's Hospital, Forest Close, Forest Lodge, Grenoside Grange, Michael Carlisle Centre, The Longley Centre, Northern General Hospital, Royal Hallamshire Hospital, King's Mill Hospital, Royal Shrewsbury Hospital, Shropshire Community Health NHS Trust HQ, St Mary's Health Campus, Western Community Hospital, Musgrove Park Hospital, The James Cook University Hospital, South Tyneside District Hospital, Sunderland Royal Hospital, Warwick Hospital, Springfield University Hospital, Fieldhead Hospital, Southern Health & Social Care Trust, Moorgreen Hospital, Southport & Formby District General Hospital, St George's Hospital (Tooting), Whiston Hospital, Stepping Hill Hospital, Abraham Cowley Unit, East Surrey Hospital, Brighton General Hospital, Trust Headquarters, Morrision Hospital, Tameside General Hospital, Tees, Esk, Wear Valley NHS Trust (Durham), The Christie, Clatterbridge Cancer Centre -Wirral, Russells Hall Hospital, Hillingdon Hospital, The Royal Victoria Infirmary, Princess Alexandra Hospital, The Queen Elizabeth Hospital, Robert Jones & Agnes Hunt Orthopaedic Hospital, Rotherham District General Hospital, Royal Bournemouth General Hospital, The Royal Marsden Hospital (London), The Royal Marsden Hospital (Surrey), Royal Orthopaedic Hospital, New Cross Hospital, The Walton Centre NHS Foundation Trust, Torbay Hospital, Grantham & District Hospital, Lincoln County Hospital, Pilgrim Hospital, University College Hospital, University College London Hospitals NHS Foundation Trust HQ, Southampton General Hospital, Queen Elizabeth Hospital, Bristol Royal Hospital for Children, Bristol Royal Infirmary, St Michael's Hospital, Weston General Hospital, University Hospital Coventry, Royal Bournemouth Hospital Bcsc, Burton Hospital, Royal Derby Hospital, Leicester Royal Infirmary, Furness General Hospital, Royal Lancaster Infirmary, Westmorland General Hospital, County Hospital, Royal Stoke University Hospital, Derriford Hospital, Manor Hospital, Warrington Hospital, Watford General Hospital, West Suffolk Hospital, Midhurst Community Hospital, St Richard's Hospital, Worthing Hospital, The Whittington Hospital, Arrowse Park Hospital, Worcestershire Royal Hospital, Kings Court 2, Royal Albert Edward Infirmary, Hereford County Hospital, Yeovil District Hospital, Scarborough General Hospital, York Hospital.

United States of America

Oregon Health & Science University, Columbia University, University of Michigan Schools of Medicine & Public Health, McLeod Healthcare System, Lancaster General Health, Perelman School of Medicine at the University of Pennsylvania, Oklahoma Heart Institute, UH Cleveland Hospital, Ohio State University, Baylor AllSaints Medical Centre, The Heart Hospital Baylor Plano, Baylor University Medical Centre, Baylor Scott & White Health, Piedmont Atlanta Hospital, Washington University in St.Louis, Medical College of Wisconsin, INOVA Fairfax Medical Center, Allegheny General Hospital, Stanford University, Tufts Medical Centre, Carilion Clinic, Beth Israel Deaconess Medical Center, University of California San Francisco - Fresno, Emory University Healthcare System, University of Iowa, University of Cincinnati, Presbyterian Hospital Services, Cleveland Clinic, Legacy Emanuel Medical Center, Lankenau Institute of Medical Re-

search, Providence Saint John's Health Centre, University of Alabama at Birmingham Hospital, University of Florida, Rush University Medical Center, University of Chicago, Johns Hopkins, University of Nebraska Medical Center, University of Kansas Medical Center, Hartford HealthCare, US NHLBI PETAL Network, Ochsner Clinic Foundation, Baystate MC, Brigham and Women's Hospital, Maine Health, University of Florida HSC Shands, Beth Israel Deaconess, Massachusetts General Hospital, St Vincent, University of Mississippi MC, Hennepin County MC, University of California SF, University of California SF Fresno, University of California Davis, Stanford University Hospital, University of California Ronald Reagan MC, University of Texas HSC Houston, University of Colorado Hospital, Denver Health MC, National Jewish Health / St Joseph, Cleveland Clinic Foundation, Ohio State University, University of Cincinnati MC, Ohio State University East, University of Michigan MC, Henry Ford Health System, Montefiore MC, Mt Sinai, Montefiore MC Weiler, Montefiore MC North, University of Arizona, UPMC, UPMC Mercy, UPMC Shadyside, Temple University Hospital, Wake Forest Baptist Health, University of Virginia MC, Virginia Commonwealth University, University of Kentucky, Medical University of South Carolina, Intermountain Medical Center, University of Utah HSC, Vanderbilt University MC, University MC (LSU), Duke University MC, Harborview MC, University of Washington MC, Swedish Hospital First Hill, Swedish Hospital Cherry Hill, Oregon Health and Science University, Cedars-Sinai MC, University of Oklahoma Health Sciences Center, The Christ Hospital, University of Utah, Mount Sinai Medical Center, University of Maryland, St Christopher's Hospital for Children, Cleveland Clinic, Ohio, Northwell Health, Sentara Norfolk General Hospital, University of Washington Medical Center - Northwest, Brooke Army Medical Centre, MedStar Washington Hospital Centre, UT Southwestern, Nationwide Children's Hospital, Mayo Clinic School of Medicine, Houston Methodist Hospital, Rochester General Hospital, University of California - San Francisco (UCSF), Avera McKennan Hospital & University Health Center.

Viet Nam

Hospital for Tropical Diseases.

Institutional acknowledgments and funding

This work was made possible by the UK Foreign, Commonwealth and Development Office; Wellcome [215091/Z/18/Z] [205228/Z/16/Z] [220757/Z/20/Z]; Bill & Melinda Gates Foundation [OPP1209135]; the philanthropic support of the donors to the University of Oxford’s COVID-19 Research Response Fund; the Prince Charles Hospital Foundation, Australia; Australian Department of Health grant (3273191); Gender Equity Strategic Fund at University of Queensland; Artificial Intelligence for Pandemics (A14PAN) at University of Queensland; the Australian Research Council Centre of Excellence for Engineered Quantum Systems (EQUS, CE170100009); UK Medical Research Council Clinical Research Training Fellowship MR/V001671/1; CIHR Coronavirus Rapid Research Funding Opportunity OV2170359 and the coordination in Canada by Sunnybrook Research Institute; endorsement of the Irish Critical Care- Clinical Trials Group, co-ordination in Ireland by the Irish Critical Care- Clinical Trials Network at University College Dublin and funding by the Health Research Board of Ireland [CTN-2014-12]; the Rapid European COVID-19 Emergency Response research (RECOVER) [H2020 project 101003589] and European Clinical Research Alliance on Infectious Diseases (ECRAID) [965313]; the COVID clinical management team, AIIMS, Rishikesh, India; Cambridge NIHR Biomedical Research Centre; the dedication and hard work of the Groote Schuur Hospital Covid ICU Team; support by the Groote Schuur nursing and University of Cape Town registrar bodies coordinated by the Division of Critical Care at the University of Cape Town; the Liverpool School of Tropical Medicine and the University of Oxford; the dedication and hard work of the Norwegian SARS-CoV-2 study team; the Research Council of Norway grant no 312780, and a philanthropic donation from Vivaldi Invest A/S owned by Jon Stephenson von Tetzchner; Imperial NIHR Biomedical Research Centre; Innovative Medicines Initiative Joint Undertaking under Grant Agreement No. 115523 COMBACTE, resources of which are composed of financial contribution from the European Union’s Seventh Framework Programme (FP7/2007- 2013) and EFPIA companies, in-kind contribution; is sponsored by INSERM and funded by the REACTing (REsearch & ACTION emergING infectious diseases) consortium and by a grant of the French Ministry of Health (PHRC n°20-0424); Stiftungsfonds zur Förderung der Bekämpfung der Tuberkulose und anderer Lungenkrankheiten of the City of Vienna, Project Number: APCOV22BGM; Italian Ministry of Health “Fondi Ricerca corrente-L1P6” to IRCCS Ospedale Sacro Cuore-Don Calabria; grants from Instituto de Salud Carlos III, Ministerio de Ciencia, Spain; Brazil, National Council for Scientific and Technological Development Scholarship number 303953/2018-7; the Firland Foundation, Shoreline, Washington, USA; and preparedness work conducted by the Short Period Incidence Study of Severe Acute Respiratory Infection.

This work uses Data / Material provided by patients and collected by the NHS as part of their care and support #DataSavesLives. The Data / Material used for this research were obtained from ISARIC4C. The COVID-19 Clinical Information Network (CO-CIN) data was collated by ISARIC4C Investigators. Data and Material provision was supported by grants from: the National Institute for Health Research (NIHR; award CO-CIN-01), the Medical Research Council (MRC; grant MC_PC_19059), and by the NIHR Health Protection Research Unit (HPRU) in Emerging and Zoonotic Infections at University of Liverpool in partnership with Public Health England (PHE), (award 200907), NIHR HPRU in Respiratory Infections at Imperial College London with PHE (award 200927), Liverpool Experimental Cancer Medicine Centre (grant C18616/A25153), NIHR Biomedical Research Centre at Imperial College London (award IS-BRC-1215-20013), and NIHR Clinical Research Network providing infrastructure support.